



52F14SW0107 15 LANGTON

010

Diamond Drilling

Township of LANGTON

Report N^o 15

Work performed by: Kerr Addison Mines Limited

Claim N ^o	Hole N ^o	Footage	Date	Note
K 417791	L-75-2	153.0'	Oct/75	(1)
K 417792	L-75-1	440.0'	Oct/75	(1)

Notes:

(1) #51-76

DIAMOND DRILL RECORD

LOGGED BY

J.M. Campbell
J.M. Campbell

Kerr Addison Mines Ltd.

PROPERTY Langton Township Project 0-24

D.D.H. No. L-75-2 PAGE 1

LATITUDE 0408 BEARING OF HOLE N 29° E STARTED October 22, 1975

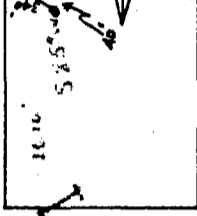
DEPARTURE 0408 DIP OF HOLE 45° @ collar COMPLETED October 23, 1975

ELEVATION _____ DIP TESTS 42° @ 150' DEPTH 153'

CLAIM No. 417791

DIRECTION AND DISTANCE FROM

NE. CLAIM POST



FOOTAGE FROM	TO	DESCRIPTION	SAMPLE No.	FOOTAGE		SAMPLE LENGTH	Per Ton	ASSAY
				FROM	TO			
0	3.0	Casing	9424	13.0	18.0	5.0	tr.	
3.0	150.5	Gneiss overall flash coloration	9425	41.5	46.5	5.0	.18	
		3.0' - 95.0' coarse pegmatite appearance	9426	60.0	65.0	5.0	.05	
		95.0' - 124.0' finer grained	9427	90.5	95.5	5.0	.32	
		124.5' - 149.5' coarser grained grey white pegmatite with 10% coarse biotite	9428	117.0	122.0	5.0	.08	
		Orange uranium stains - 141' - 15', 19', 41' - 43', 54' - 55', 60' - 66',	9429	126.5	131.0	4.5	.10	
		117' - 122' - finer grained - greyish	9430	131.0	136.0	5.0	.46	
			9431	136.0	141.0	5.0	.21	
			9432	141.0	146.0	5.0	.31	
150.5	153.0	Hornblende biotite quartz gneiss - massive - black. In at 65° lineation						
		at 45° to core axis.						
	153.0	END OF HOLE.						

W. J. ...

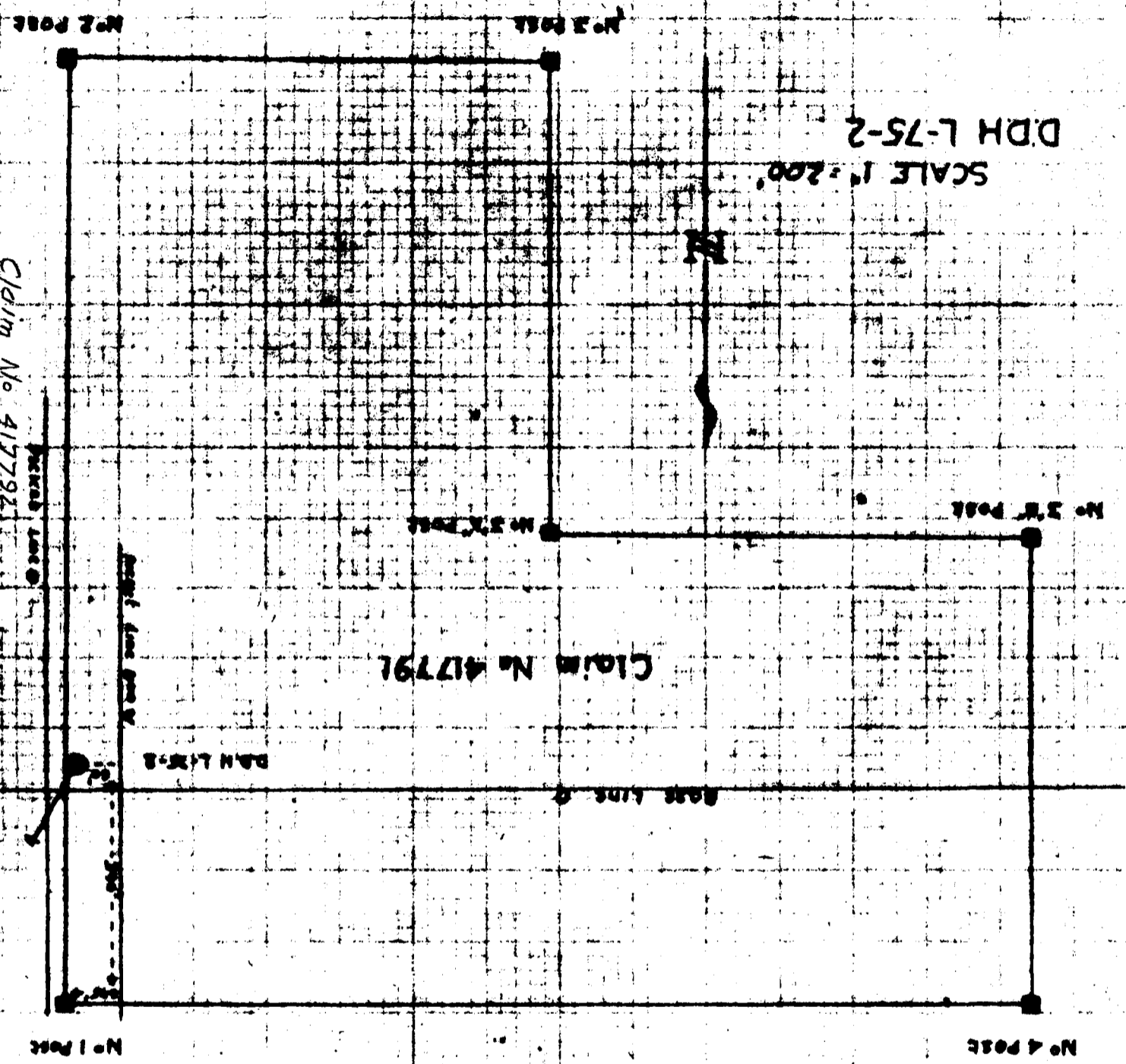
DDH L-75-2

SCALE 1" = 200'

Claim No. 417792

CLAIM No. 417791

D.M. L. 17-2



DIAMOND DRILL RECORD

ERR ADRISSON MINES LTD.

LOGGED BY J.H. CAMPBELL

J.H. Campbell

PROPERTY Langton Township Project 0-24

D.D.H. No. I-75-1 PAGE 2.

LATITUDE _____ BEARING OF HOLE STARTED October 20, 1975

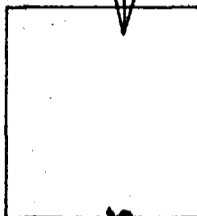
DEPARTURE _____ DIP OF HOLE _____ COMPLETED October 21, 1975

ELEVATION _____ DIP TESTS _____ DEPTH 440'

CLAIM No. _____

DIRECTION AND DISTANCE FROM _____

NE. CLAIM POST



FOOTAGE FROM	FOOTAGE TO	DESCRIPTION	SAMPLE No.	FOOTAGE		SAMPLE LENGTH	lb Per Ton	ASSAY
				FROM	TO			
178.5	197.0	Pegmatite - some coarse biotite crystals	9600	178.5	183.5	5.0		
			9415	183.5	188.5	5.0	tr.	
		178.5' - 184.0' white with some light green alteration	9416	115.5	320.5	5.0	.12	
		184.0' - 197.0' pinkish	9417	320.5	325.5	5.0	.08	
197.0	315.5	Hornblende biotite feldspar gneiss - lamination @ 45° coarse biotite increasing content to 75%	9418	325.5	330.5	5.0	.16	
		308.0' - 310.0' pegmatite dyke	9419	330.5	334.5	4.0	.11	
315.5	334.5	Pinkish pegmatite In contact 60°	9420	352.0	357.0	5.0	.05	
		Miscellaneous coarse biotite 20%	9421	357.0	362.0	5.0	nil	
		316.0 - 316.5 highly altered hornblende biotite feldspar gneiss	9422	395.5	400.0	5.5	.43	
334.5	352.0	Hornblende biotite feldspar gneiss In contact 30°. Coarse grained biotite 70% lamination 10°	9423	406.5	411.5	5.0	.06	
		340.5' - 341.0' pegmatite dyke						
		349.0' - 349.5' pegmatite dyke						
		351.0' - 351.3' pegmatite dyke						
352.0	362.0	Pinkish pegmatite In contact 45°. Coarse biotite 10% cont content 5°						
362.0	395.5	Hornblende biotite feldspar gneiss - medium to coarse (biotite 70%) - lamination appears to be 50° to core axis						

DIAMOND DRILL RECORD

LOGGED BY J.M. CAMPBELL

ERRR-ADRISSON MINERS LTD.

PROPERTY Langton Township Project 0-24

D.D.H. No. 1-75-1

STARTED October 20, 1975

PAGE 1

LATITUDE 2+00N

BEARING OF HOLE Orld South

COMPLETED October 21, 1975

CLAIM No. 417792

DEPARTURE 0+00

DIP OF HOLE 45° S collar

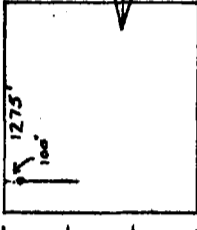
DIRECTION AND DISTANCE FROM

ELEVATION

DIP TESTS 39° @ 430'

DEPTH 440'

NE. CLAIM POST



FOOTAGE FROM	TO	DESCRIPTION	SAMPLE No.	FOOTAGE		SAMPLE LENGTH	ASSAY
				FROM	TO		
0	5.0	Casing					
5.0	8.5	Fine grain mesocratic, grayish white granite					
8.5	13.0	Leucocratic granite, pinkish out contact 30°. Traces of orange brown staining @ 9.0', 10', 10.5'.					
13.0	29.0	Quartz biotite hornblende, medium to coarse grained, above normal biotite out contact 70°	9595	29.0	34.0	5.0	.22
		14.5' - 15' 50% quartz - traces of sulphides throughout	9596	34.0	39.0	5.0	.35
		19.5' - 20.0' white pegmatite dyke	9597	39.0	44.5	5.5	.08
		27.0' - 28.0' white pegmatite dyke	9598	44.5	48.0	3.5	tr
29.0	44.5	Granite - pinkish - 5% - 20% coarse biotite. Very slight orange brown staining in rare spots	9599	56.0	61.0	5.0	tr
44.5	52.0	Grey granite - much biotite					
		47.0' - 48.0' white pegmatite					
52.0	61.0	Quartz - biotite hornblende feldspar gneiss - heavily granitized. 1/8 fine grained granite.					
61.0	107.0	Grey feldspar biotite granite					
107.0	178.5	Hornblende biotite feldspar - with 45% lineation					

SCALE 1" = 200'

DDH L-75-1

See also

No 3 Post

No 2 Post

Picket Line 0

Claim No 417792

Claim No
417791

Base Line 0

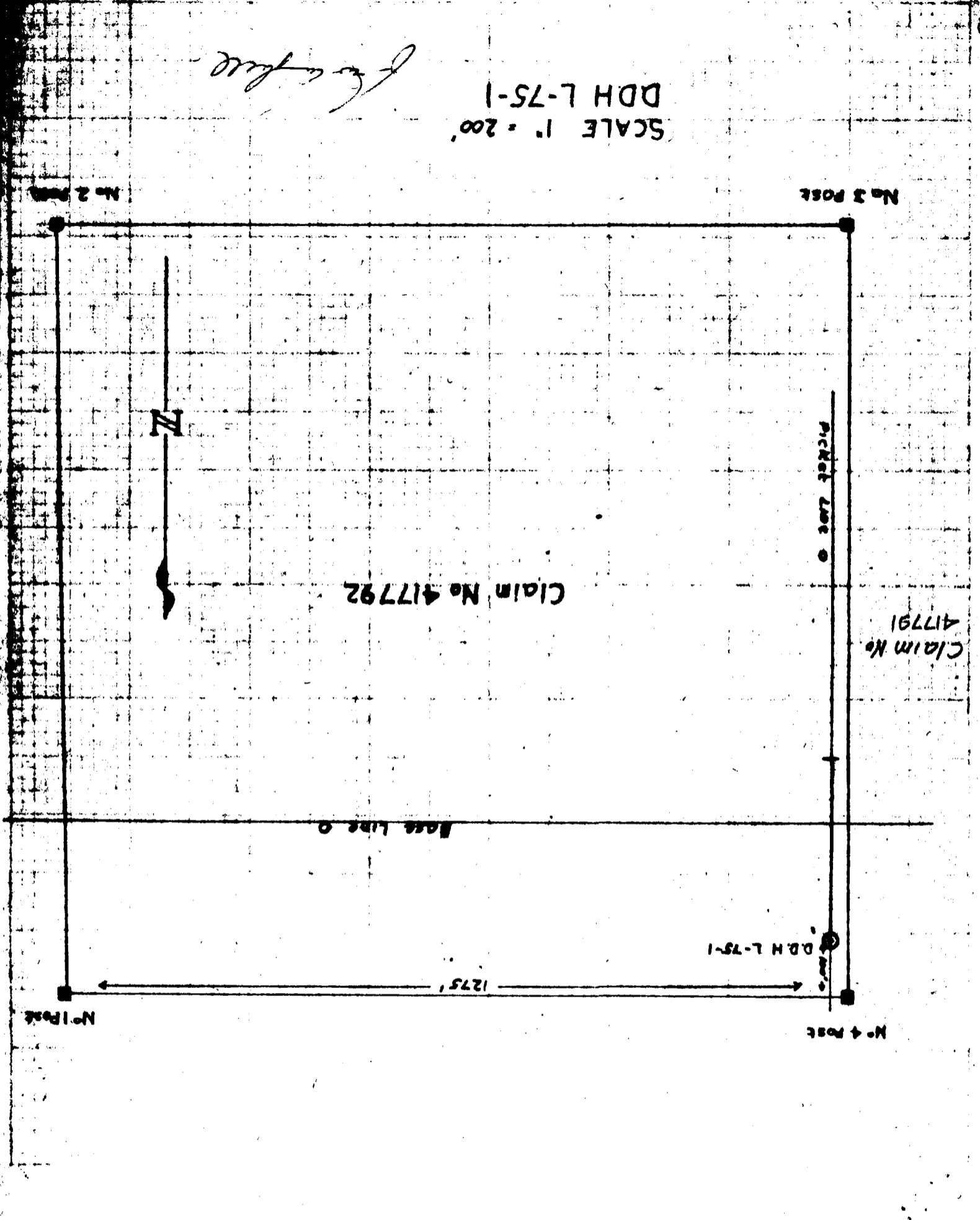
DDH L-75-1

1275'

No 4 Post

No 1 Post

N



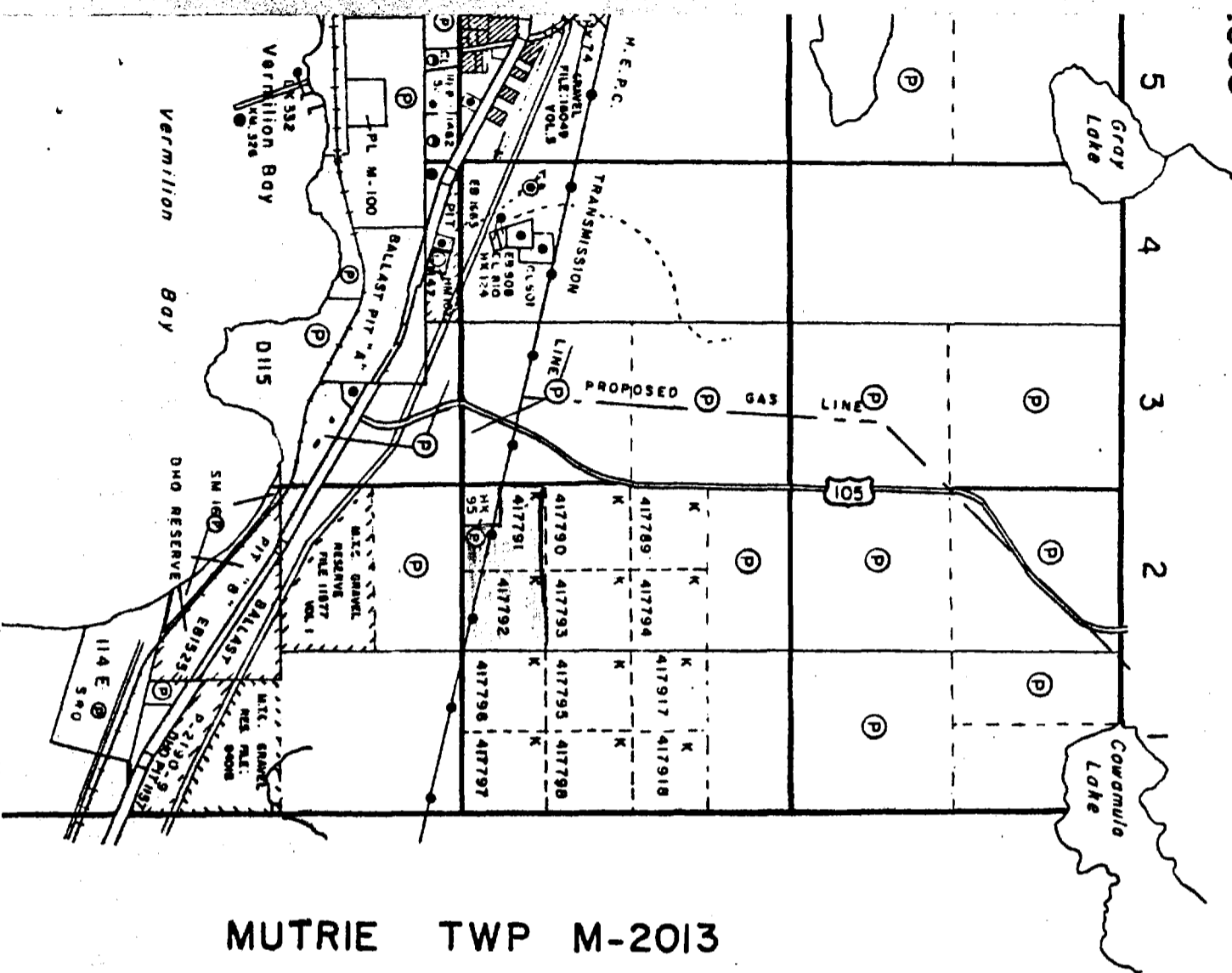
16
V.L.

006



52F14SW0107 15 LANGTON

055



MUTRIE TWP M-2013

THE TOWNSHIP

OF M-1999

















LANGTON

DISTRICT OF
KENORA

KENORA
MINING DIVISION

SCALE: 1-INCH 40 CHAINS

LEGEND

- PATENTED LAND  or 
- CROWN LAND SALE 
- LEASES 
- LOCATED LAND 
- LICENSE OF OCCUPATION 
- MINING RIGHTS ONLY 
- SURFACE RIGHTS ONLY 
- ROADS 
- IMPROVED ROADS 
- KING'S HIGHWAYS 
- RAILWAYS 
- POWER LINES 
- MARSH OR MUSKEG 
- MINES 
- CANCELLED 
- PATENTED FOR S. R. O. 