

DIAMOND DRILLING



52F15NE9172 52F15NE0015B1 WEBB

010

TOWNSHIP: WEBB

REPORT No.: 22

WORK PERFORMED BY: SELCO MINING CORPORATION LIMITED

<u>CLAIM No.</u>	<u>HOLE No.</u>	<u>FOOTAGE</u>	<u>DATE</u>	<u>NOTE</u>
PA 498189	30-8-1	228.0	Feb./79	(1)
<hr/>				
TOTAL	1DH	228 FT		

NOTES: # 17-80 (McILRAITH TWP.)

DIAMOND DRILL RECORD

HOLE NO. 30-8-1

PROPERTY _____

GULLWING AREA

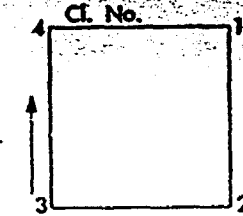
(Pa 498189)

SHEET NO 1 of 2

BEARING Grid South

LOCATION 16+00E
4+75S

DIP COLLAR -50°



ELEVATION _____

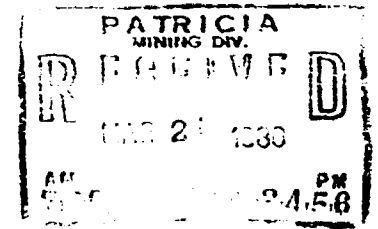
TOTAL DEPTH 228'

CORE SIZE AQ

STARTED Feb. 12, 1979

COMPLETED Feb. 13, 1979

FROM	TO	DESCRIPTION	SAMPLE NO.	FROM	TO	CORE LENGTH	CORE RECOVERED	ASSAYS					REMARKS		
								AU	Ag	CU	Zn	Sn			
								oz/tn	oz/tn	%	%	%			
0	8.0	CASING													
8	81.2	DACITIC TUFF AND TUFF-BRECCIA Dark grey fragmental with 5-15% whitish feldspar crystals in both matrix and clasts. Clasts are predominantly dacitic and highly flattened with a maximum of 1" perpendicular to foliation. Mafics consist of both biotite and hornblende. Rare pink garnet metacryst. Foliation at 65° to core axis. Occasional band of quartz-garnet-epidote and minor pyrrhotite - to 4" 62.5-66.0: 20% vein quartz with minor pyrrhotite as disseminated and stringers. 66.0-81.2: more siliceous tuff with 2-3% bluish quartz eyes and 15-20% feldspar crystals.													
81.2	83.0	SULFIDES AND TUFF 25% pyrrhotite, 5% late pyrite veining 1-2% sphalerite in a siliceous matrix.	0543	81.2	83.0	1.8'	1.8	N11	0.01	0.02	0.79	0.002			
83.0	89.5	RHYOLITE TUFF Fine grained, grey, silicic tuff, weakly sericitic with 2% disseminated pyrrhotite. Several narrow veins of late pyrite and carbonate.	0544	83.0	89.5	6.5	6.5	N11	0.01	0.01					
89.5	93.5	MASSIVE SULFIDES AND QUARTZ VEINS 89.5-91.8: Massive pyrrhotite with trace sphalerite and chalcopryite and 5% gre. chloritic inclusions. 91.8-93.5: Siliceous sericitic tuff with 10% pyrrhotite, minor pyrite.	0545	89.5	93.5	4.0	4.0	N11	0.01	0.08					



DRILLED BY AMALGAMATED DRILLING

SIGNED A.P. PRYSLAK

DIAMOND DRILL RECORD

HOLE NO. 30-8-1

PROPERTY _____

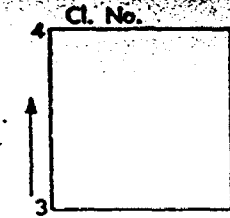
GULLWING AREA

SHEET NO 2 of 2

BEARING _____

LOCATION 16+00E
4+75S

DIP COLLAR _____



ELEVATION _____

TOTAL DEPTH _____

CORE SIZE _____

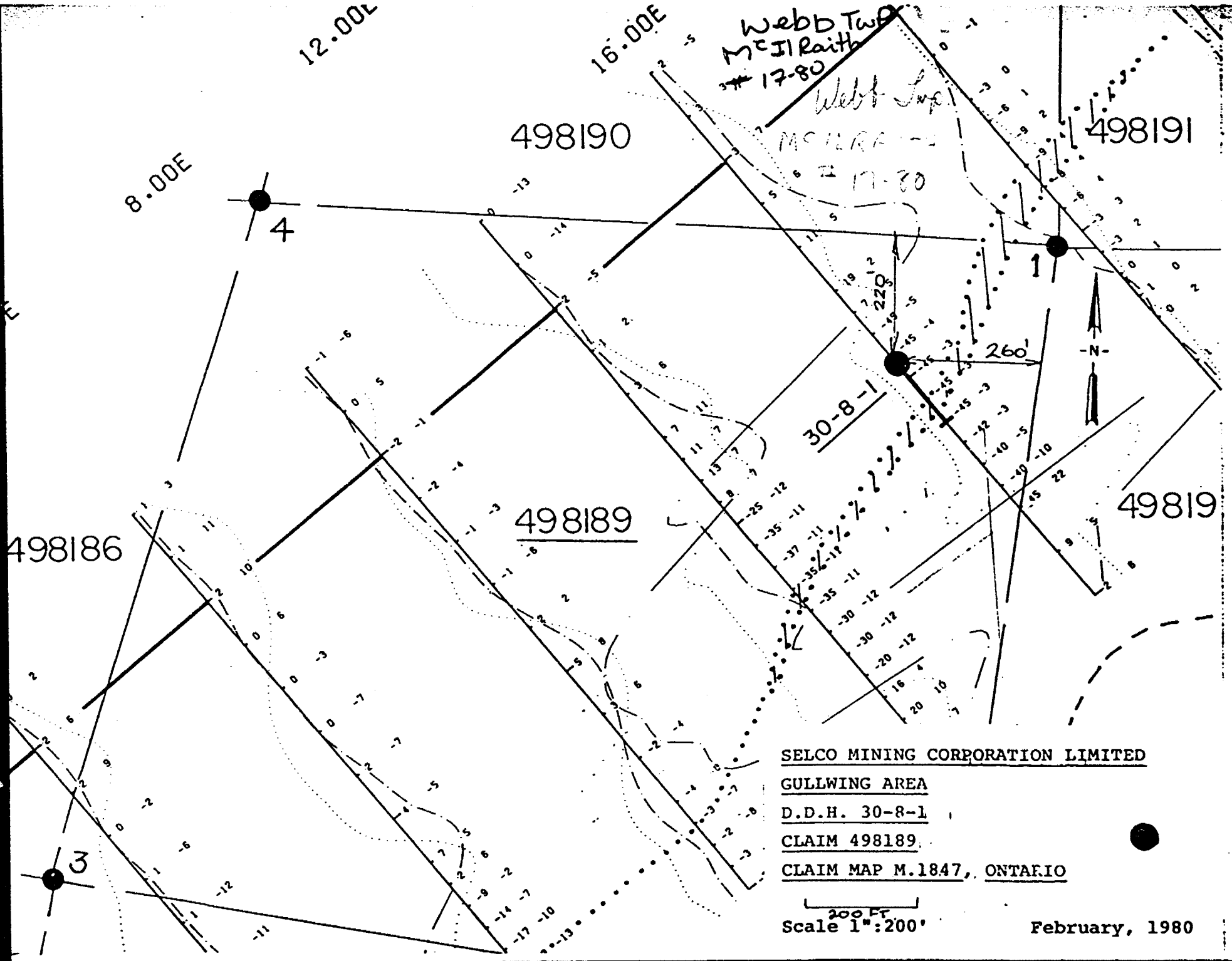
STARTED _____

COMPLETED _____

FROM	TO	DESCRIPTION	SAMPLE NO.	FROM	TO	CORE LENGTH	CORE RECOVERED	ASSAYS				REMARKS
93.5	124.5	<p>INTERBEDDED RHYOLITIC AND GRAPHITIC TUFFS</p> <p>93.5-100.8: Fine grained, silicic tuff with 3-5% disseminated pyrrhotite, several pyrite veins to 1/2".</p> <p>100.8-105.0: Graphitic tuff with 10-15% disseminated pyrrhotite, minor pyrite.</p> <p>105.0-109.0: Silicic tuff with minor pyrrhotite.</p> <p>109.0-111.7: Graphitic tuff.</p> <p>111.7-122.2: Very silicic tuff with 5-10% blebs of fine grained pyrrhotite.</p> <p>122.2-124.5: Graphitic tuff with 6-7% pyrrhotite.</p>										The section from 93.5 to 124.5 should be assayed if significant values are found in the section 81.2-93.5.
124.5	219.0	<p>RHYODACITE TUFF AND LAPILLI TUFF</p> <p>Fine grained, dark grey, hard, silicic tuff. Hornblende predominates over biotite occasional quartz-garnet-epidote band from 1/2 to 6" wide. Minor pink garnet metacrysts.</p> <p>215.5-217.0: weakly graphitic tuff with 2% pyrite cubes to 1mm.</p> <p>- weakly conductive.</p>										
219.0	225.0	<p>FAULT ZONE</p> <p>Highly silicified mylonitic breccia</p> <p>- also highly fractured.</p> <p>- driller report loss of water.</p>										
215.0	228.0	<p>GRAPHITIC TUFF</p> <p>Fine grained, dark grey, well bedded weakly graphitic tuff.</p> <p>Bedding at 60° to core axis.</p> <p>Minor pyrite and pyrrhotite.</p>										

DRILLED BY _____

SIGNED _____



SELCO MINING CORPORATION LIMITED

GULLWING AREA

D.D.H. 30-8-1

CLAIM 498189

CLAIM MAP M.1847, ONTARIO

200 FT
Scale 1" : 200'

February, 1980

Webb Township
M-1874

McIlraith Twp. (M)

PROJECTED LINE

Po	Pa
498190	498191
498189	
Po	
498188	
Pa	
436537	
Po	Pa
436536	436538
Po	
436538	

Pa	Pa
490378	490379
Pa	Pa
490379	490378

490455	490451	490453	490452
533154	533152	533153	490451

Drope Twp. (M-1847)

PROJECTED



52F15NE9172 52F15NE0015B1 WEBB