

DIAMOND DRILLING



010

TOWNSHIP: BROWNRIDGE

REPORT No.: 14

WORK PERFORMED BY: SELCO MINING CORPORATION LTD.

<u>CLAIM No.</u>	<u>HOLE No.</u>	<u>FOOTAGE</u>	<u>DATE</u>	<u>NOTE</u>
K 533091	M-9	125.0	May/81	(1)
K 490413	M-10	126.0	May/81	(1)
K 533091 490413	M-11	160.0	May/81	(1)
K 533091	M-12	138.0	May/81	(2)
K 490413	M-13	125.0	May/81	(2)
K 533091	M-14	120.0	May/81	(2)
K 490413	M-15	117.0	June/81	(2)
	M-16	121.0	June/81	(2)

NOTES:

(1) #86-81

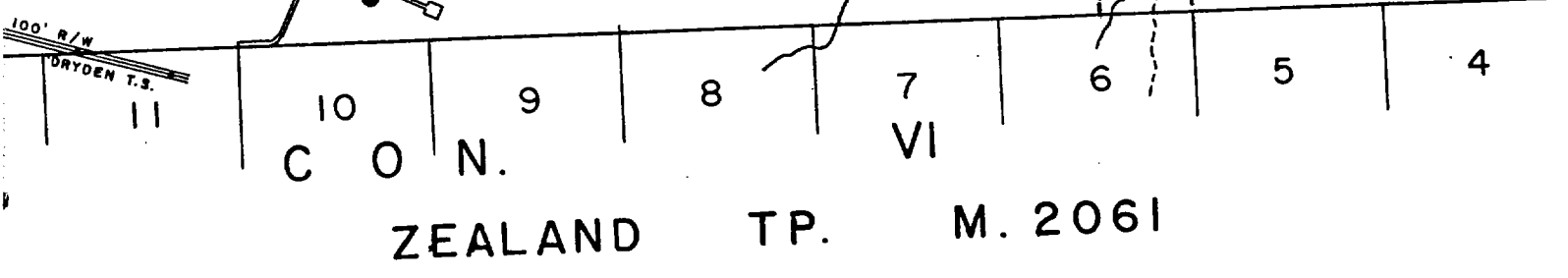
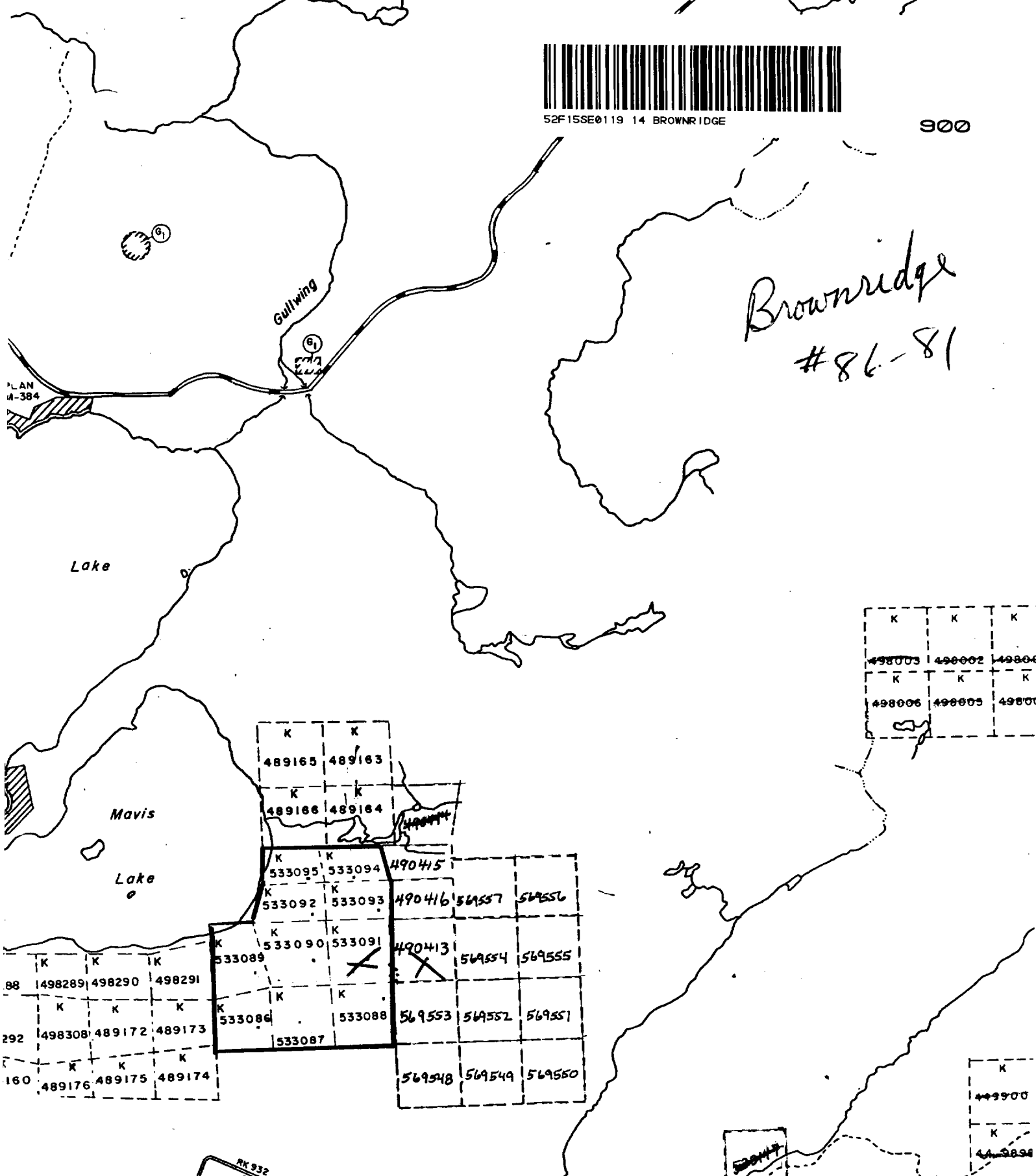
(2) #120-81



52F15SE0119 14 BROWNRIDGE

900

*Brownridge
#86-81*



DIAMOND DRILL RECORD
JOURNAL DE SONDAGE DE DIAMANT

(K 533091)

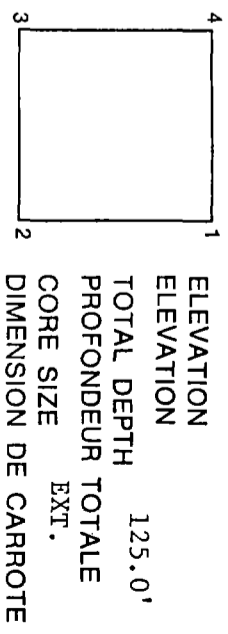
HOLE NO. M-9
 NO. DU TROU
 SHEET NO. 1 of 1
 NO. DE FEUILLE
 LOCATION 5+75N
 ENDROIT 2+50W

PROPERTY RAFTER
 PROPRIETE

BEARING 348°
 DIRECTION
 DIP -46°
 PENTE

STARTED May 3, 1981
 COMMENCE LE

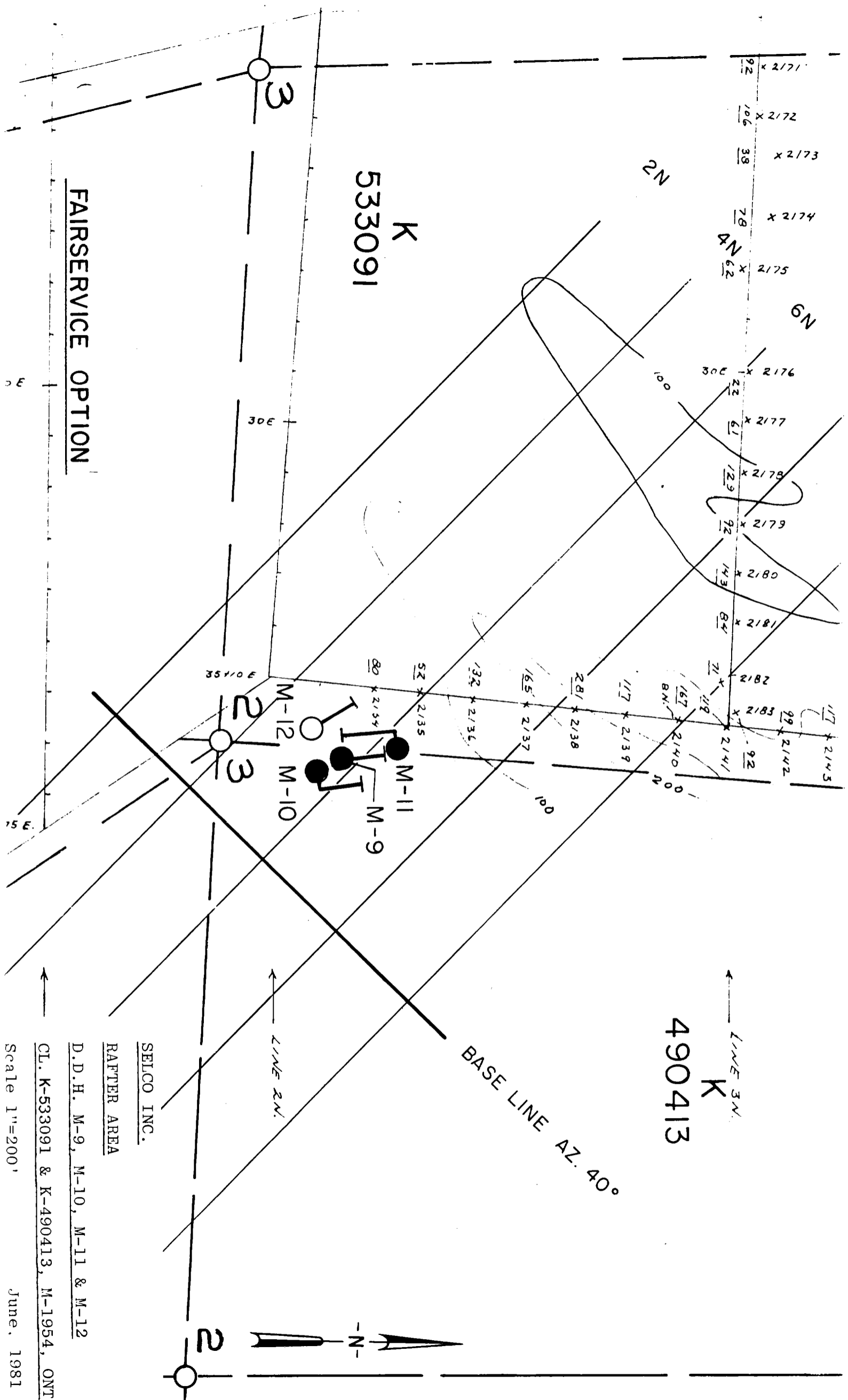
COMPLETED May 9, 1981
 TERMINE LE



FROM DE	TO A	DESCRIPTION	SAMPLE NO. D'ECHANT.	FROM DE	TO A	LENGTH LONGUEUR	CORE RECD. (CARROTE RECOURVE)	ASSAYS ANALYSES		REMARKS REMARQUES
0	2.0	CASING IN BEDROCK.								
2.0	125.0	METAGABBRO 2.0-107.7: Medium grained moderately well foliated gabbro with 30% plagioclase, 70% hornblende. 107.7-125.0: Similar to above but notably chloritized. - massive black tourmaline veining at 111.0-111.2, 111.8-112.0 @ 70°-80° to core axis. - white quartz-feldspar pegmatite @ 45° to core axis at 70.4-70.8 (conformable with foliation). 125.0 END OF HOLE.								

DRILLED BY SELCO INC.
 COMMANDE PAR

SIGNED A.P. PRYSIAK
 JOURNAL PAR



K
533091

LINE 3N
K
490413

BASE LINE AZ. 40°

FAIRSERVICE OPTION

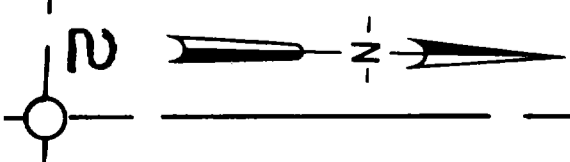
SELCO INC.
RAFTER AREA

D.D.H. M-9, M-10, M-11 & M-12

CL. K-533091 & K-490413, M-1954, ONT

Scale 1"=200'

June, 1981



SELCO MINING CORPORATION LIMITED
DIAMOND DRILL RECORD
JOURNAL DE SONDAGE DE DIAMANT

(K 490413)

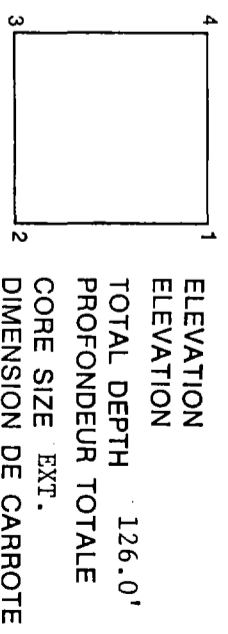
HOLE NO. M-10
 NO. DU TROU
 SHEET NO. 1 of 2
 NO. DE FEUILLE
 LOCATION 5+55N
 ENDROIT 2+00W

PROPERTY RAFTER
 PROPRIETE

BEARING 344° Az
 DIRECTION
 DIP -48°
 PENTE

STARTED May 11, 1981
 COMMENCE LE

COMPLETED May 14, 1981
 TERMINE LE



FROM DE	TO A	DESCRIPTION	SAMPLE NO. DECHANT	FROM DE	TO A	LENGTH LONG-UEUR	CORE RECOVERED CARROTE RECOURVE	ASSAYS ANALYSES		REMARKS REMARQUES
0	-2.0	CASING (bedrock set-up).								
2.0	16.3	METAGABBRO Medium grained, foliated amphibolite with hornblende-plagioclase = 3:1. Foliation at 10-20° to core axis.								
16.3	18.4	WHITE PEGMATITE Predominantly white saccaroidal albite with bands of yellowish green lithion mica. Minor tourmaline, apatite and fine tantalite. Occasional coarser pegmatite phases. Contacts at 75° to core axis.								
18.4	51.5	METAGABBRO Coarse grained, massive to weakly foliated with 30% hornblende, 20% plagioclase, 2-3% fine disseminated pyrrhotite. 27.5-28.6: quartz-plagioclase-tourmaline dike at 70° to core axis, normal to foliation.								
51.5	97.0	METABASALT Fine grained - medium grained, well foliated mafic metavolcanics. Some coarser grained phases may represent metagabbroic dikes. - weakly biotitic. -6.0-66.2; 67.0-67.3 - quartz + plagioclase pegmatites at 45° to core axis, parallel to foliation. -78.2-78.3; 79.0-79.1 - quartz + plagioclase veining at 50° to core axis. -79.5-80.0 - quartz-tourmaline vein at 35° to core axis, normal to foliation -71.0-71.7 - quartz-tourmaline at 45° to core axis, parallel to foliation.								

DRILLED BY SELCO INC.
 COMMANDER DAB

SIGNED A.P. PRYSLAK
 JOURNAL PAR

DIAMOND DRILL RECORD
JOURNAL DE SONDAGE DE DIAMANT

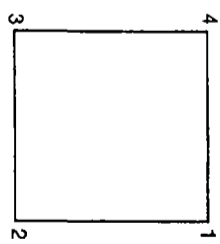
HOLE NO. M-10
NO. DU TROU
SHEET NO. 2 of 2
NO. DE FEUILLE
LOCATION 5+55N
ENDROIT 2+00W

PROPERTY RAFTER
PROPRIETE

BEARING
DIRECTION
DIP
PENTE

STARTED
COMMENCE LE

COMPLETED
TERMINE LE



ELEVATION
ELEVATION
TOTAL DEPTH
PROFONDEUR TOTALE
CORE SIZE
DIMENSION DE CARROTE

FROM DE	TO A	DESCRIPTION	SAMPLE NO. D'ECHANT.	FROM DE	TO A	LENGTH LONGUEUR	CORE RECOVERED CARROTE RECUPERE	ASSAYS ANALYSES		REMARKS REMARQUES
97.0	126.0	METAGABBRO Coarse grained, weakly foliated. - similar to 18.4-51.5 121.5-121.7 - quartz + plagioclase + tourmaline at 80° to core axis.								
	126.0	END OF HOLE								

DRILLED BY
SCHEMACE PAD

SIGNED
JOURNAL PAR

DIAMOND DRILL RECORD
JOURNAL DE SONDAGE DE DIAMANT

PROPERTY RAFTER (K 490413 & 533091)

HOLE NO. M-11
NO. DU TROU
SHEET NO. 1 of 1
NO. DE FEUILLE
LOCATION 6+35N
ENDROIT 3+40W

PROPERTY PROPRIETE

BEARING 166° Az
DIRECTION
DIP -45°
PENTE

STARTED May 15, 1981
COMMENCE LE

COMPLETED May 18, 1981
TERMINE LE

ELEVATION 160.0'
TOTAL DEPTH PROFONDEUR TOTALE
CORE SIZE EXT. DIMENSION DE CARROTE

FROM DE	TO A	DESCRIPTION	SAMPLE NO. NO. DECHANT.	FROM DE	TO A	LENGTH LONG-UEUR	CORE RECOVERED CARROTE RECUPERE	ASSAYS ANALYSES		REMARKS REMARQUES
0	5.0	CASING								
5.0	10.0	METASEDIMENTS Very well bedded at 70° to core axis with 10% pyrite + pyrrhotite in semi-massive to massive beds up to 1" wide.								
10.0	78.0	ULTRAMAFIC Chlorite-biotite-actinolite wall zones at 10.0-34.0 and 65.0 to 75.0 with a chlorite-talc-carbonate core zone. Large metacrysts of hornblende developed in the wall zones. - Contact with sediments is sharp at 65° to core axis. - Siliceous pyritic tuff or sediments at 23.0-23.6'. 10.5-10.9: massive black tourmaline vein.								
78.0	160.0	METAGABBRO Medium grained, well foliated at 60° to core axis with hornblende: plagioclase at 3:1. 116.6-117.6: irregular white quartz veining 117.6-118.1: massive biotite alteration 119.6-120.0: white quartz vein at 50° to core axis 154.6-154.8: quartz-tourmaline vein at 15° to core axis. 159.0-159.1: quartz-bourmaline vein at 20° to core axis.								
	160.0	END OF HOLE.								

DRILLED BY
CORVAGE PAR

SIGNED
JOURNAL PAR A.P. PRYSIAK

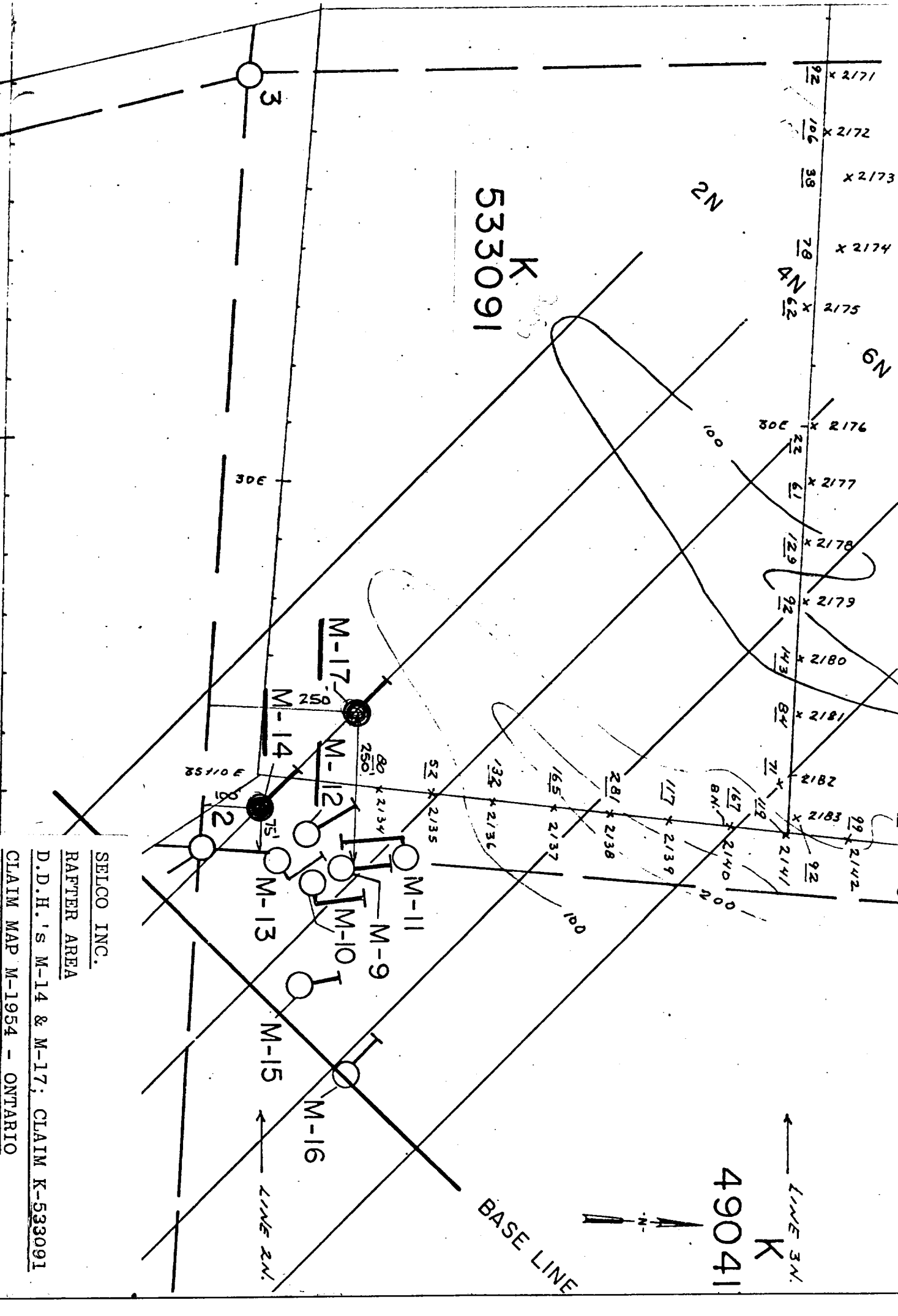
FAIRSERVICE OPTION

K

533088

533091
K

49041
K



SELCO INC.

RAFTER AREA

D.D.H.'s M-14 & M-17; CLAIM K-533091

CLAIM MAP M-1954 - ONTARIO

Scale 1" : 200'

August 1981

FAIRSERVICE OPTION

K
533091

2N

6N

4N

92 x 2171
 106 x 2172
 38 x 2173
 78 x 2174
 52 x 2175
 22 x 2176
 61 x 2177
 129 x 2178
 92 x 2179
 143 x 2180
 84 x 2181
 71 x 2182
 99 x 2183
 92 x 2141
 99 x 2142
 117 x 2143
 117 x 2145

30152

2
3

M-12
M-10

M-11
M-9

52 x 2135

82 x 2134

132 x 2136

165 x 2137

281 x 2138

117 x 2139

167 x 2140

71 x 2141

92 x 2142

99 x 2143

117 x 2145

490413

K

BASE LINE AZ. 40°

LINE 2N

LINE 3N

SELCO INC.

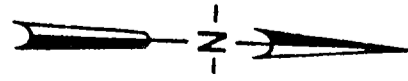
RAFTER AREA

D.D.H. M-9, M-10, M-11 & M-12

CL. K-533091 & K-490413, M-1954, ONT.

Scale 1"=200'

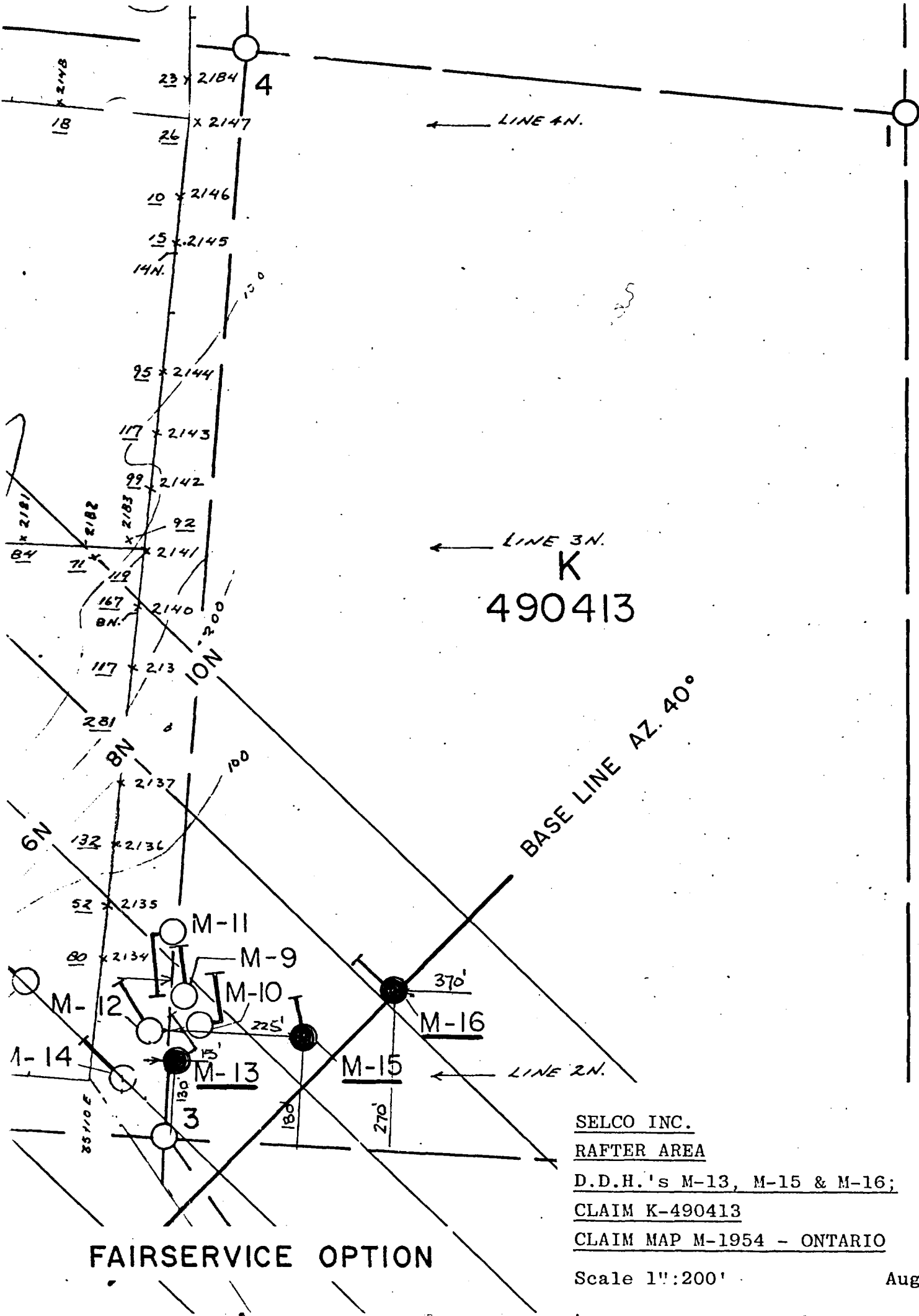
June, 1981



2

30E

75E



K
490413

SELCO INC.

RAFTER AREA

D.D.H.'s M-13, M-15 & M-16;

CLAIM K-490413

CLAIM MAP M-1954 - ONTARIO

FAIRSERVICE OPTION

Scale 1":200'

August 198

DIAMOND DRILL RECORD
JOURNAL DE SONDAGE DE DIAMANT

HOLE NO. M-12
NO. DU TROU
SHEET NO. 1 of 1
NO. DE FEUILLE
LOCATION 4+90N
ENDROIT 2+50W

PROPERTY RAFTER
PROPRIETE (K 533091)

BEARING 325° Az
DIP -45°
DIRECTION
PENTE

STARTED May 20, 1981
COMMENCE LE

COMPLETED May 25, 1981
TERMINE LE

ELEVATION
ELEVATION
TOTAL DEPTH 138.0'
PROFONDEUR TOTALE
CORE SIZE EXT.
DIMENSION DE CARROTE

FROM DE	TO A	DESCRIPTION	SAMPLE NO. DECHANT.	FROM DE	TO A	LENGTH LONGUEUR	CORE RECOVERED CARROTE RECUPERE	ASSAYS ANALYSES		REMARKS REMARQUES
0	4.0	CASING								
4.0	5.0	METAGABBRO Medium grained, foliated amphibolite.								
5.0	9.0	WHITE PEGMATITE Coarse grained quartz + albite + cleavandite with saccaroidal albite containing minor yellow-green mica, tourmaline apatite and tantalite. Contacts badly broken but appear to be 30° to core axis.								
9.0	138.0	METAGABBRO Coarse grained, foliated amphibolite 22.0-22.2: 22.8-23.6; 36.2-36.4 - quartz tourmaline veining at 70° to core axis. 51.2-51.3 - pegmatite veinlet at 45° to core axis 55.5-55.8; 57.0-57.2 - white quartz veins at 70° to core axis. 138.0 END OF HOLE.								

DRILLED BY SELCO INC.

SIGNED JOURNAL PAR A.P. PRYSIAK

DIAMOND DRILL RECORD

JOURNAL DE SONDAGE DE DIAMANT

HOLE NO. M-13
 NO. DU TROU
 SHEET NO. 1 of 1
 NO. DE FEUILLE
 LOCATION 4+75N
 ENDROIT 1+86W

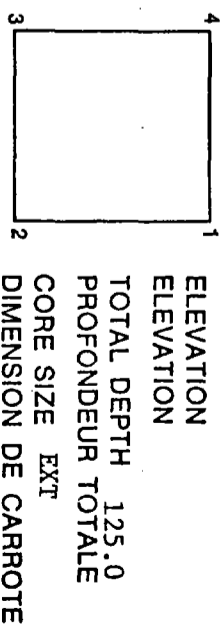
PROPERTY RAFTER (06414)
 PROPRIETE

K 4900413

BEARING 330° Az.
 DIRECTION
 DIP -45°
 PENTE

STARTED May 27, 1981
 COMMENCE LE

COMPLETED May 30, 1981
 TERMINE LE



FROM DE	TO A	DESCRIPTION	SAMPLE NO. NO. DECHANT.	FROM DE	TO A	LENGTH LONG-UEUR	CORE RECOVERED CARROTE RECUIVRE	ASSAYS ANALYSES		REMARKS REMARQUES
0	1.0	CASING								
1.0	100.4	METAGABBRO Fine to medium grained, massive to weakly foliated and variable alteration. 1-31.0 Porphyric with biotite - chlorite aggregate altering from hornblende or pyroxene phenocrysts in a green matrix of acicular amphiboles. 31.0-100.4 Very uniform fine grained massive of acicular amphibole with very minor feldspar. The section from 31.0-49.2 appears to be a fine grained chill zone.	2454	14.4	14.8	0.4'				
100.4	105.4	FELSIC METATUFF White, well bedded, biotite-sericite tuff. Bedding at 35-40° to core axis.								
105.4	120.0	ARGILLITE Very well bedded, graphitic with 20% pyrrhotite 2% pyrite trace chalcopyrite.	5456	105.4	109.4	4.0				
120.0	125.0	METAGABBRO Fine grained actinolite + plagioclase. Similar to 49.2 - 100.4.								
125.0	125.0	END OF HOLE.								

DRILLED BY
 SONDAGE PAR SELCO INC.

SIGNED
 JOURNAL PAR A.P. Pryslak

**SELCO MINING CORPORATION LIMITED
DIAMOND DRILL RECORD
JOURNAL DE SONDAGE DE DIAMANT**

HOLE NO. M-14
NO. DU TROU
SHEET NO. 1 of 1
NO. DE FEUILLE
LOCATION 4+00N
ENDROIT 2+25W

PROPERTY RAFTER (06414)
PROPRIETE

K 533091

BEARING Grid W
DIRECTION
DIP -45
PENITE

STARTED May 31, 1981
COMMENCE LE

COMPLETED June 3, 1981
TERMINE LE

1 ELEVATION
2 TOTAL DEPTH 120.0'
3 CORE SIZE EXT
4 PROFONDEUR TOTALE
DIMENSION DE CARROTE

FROM DE	TO A	DESCRIPTION	SAMPLE NO. D'ECHANT.	FROM DE	TO A	LENGTH LONG-UEUR	CORE RECORDED CARROTE RECOURVE	ASSAYS ANALYSES		REMARKS REMARQUES
0	1.0	CASING								
1.0	120.0	METAGABBRO Medium to coarse grained, massive to weakly foliated, green 60-70% hornblende and 30-40% plagioclase. Some chlorite-biotite alteration after hornblende. 7.6-8.2 White coarse grained pegmatite quartz + albite + cleavandite + tantalite 1/2" massive black tourmaline in gabbro at contacts. Minor fine grained tantalite diss with cleavandite. 65.0-65.8 White, coarse grained pegmatite quartz + k-spar + albite + cleavandite trace tantalite. Cleavandite is concentrated towards margins of dyke. 71.2-74.7 Fine grained, dark grey biotitic dyke. Contacts are very irregular. Speckled texture with aggregates of biotite. 110.3-111.0 Inclusion of banded feldspathic metasediments or tuff.	2457	7.6	8.2	0.6				
	120.0	END OF HOLE.	2458	65.0	65.8	0.8				

DRILLED BY
SONDAGE PAR SELCO INC.

SIGNED
JOURNAL PAR A.P. Prvyslak

DIAMOND DRILL RECORD
JOURNAL DE SONDAGE DE DIAMANT

HOLE NO. M-15
NO. DU TROU
SHEET NO. 1 of 1
NO. DE FEUILLE
LOCATION 6+52N
ENDROIT 0+55W

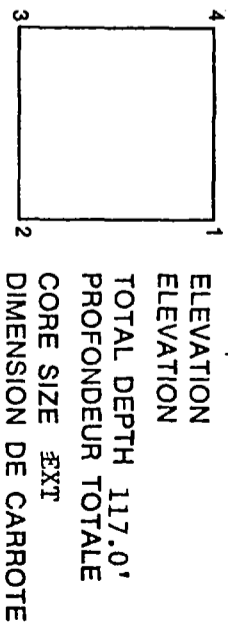
PROPERTY RAFTER (06414)
PROPRIETE

K 490413

BEARING 345° Az.
DIRECTION
DIP -45°
PENTE

STARTED June 4, 1981
COMMENCE LE

COMPLETED June 9, 1981
TERMINE LE



FROM DE	TO A	DESCRIPTION	SAMPLE NO. NO. DECHANT.	FROM DE	TO A	LENGTH LONG-UEUR	CORE RECOVERED CARROTE RECUPERE	ASSAYS ANALYSES		REMARKS REMARQUES
0	2.0	CASING								
2.0	15.5	METASEDIMENTS Interbedded feldspathic greywacke and argillite; bedding at 45° to core axis. 2.0-5.0 Mainly graphitic argillite with 15-20% pyrrhotite minor pyrite. 5.0-7.0 Feldspathic sandstone with >3% pyrrhotite. 7.0-14.0 Graphitic argillite bedded at 30° to core axis with 10% pyrrhotite, minor pyrite. 14.0-15.5 Mainly sandstone.	2459 2460	2.5 7.0	5.0 12.0	2.5 5.0				
15.5	117.0	METAGABBRO Medium - coarse grained, massive to weakly foliated with 60-65% hornblende, 35-40% feld. 30.0-30.4 White quartz + feld + tourmaline pegmatite tourmaline concentrated at contacts. 51.0-51.3 White quartz + feld + tourmaline pegmatite. 52.5-52.7 White quartz + feld + tourmaline pegmatite. 111.0-111.3 Very irregular quartz vein. 112.8-113.2 Quartz + plagioclase vein. END OF HOLE.	2461	30.0	30.4	0.4				
117.0										

DRILLED BY SELCO INC.
SONDAGE PAR

SIGNED
JOURNAL PAR A.P. Pryslak

**SELCO MINING CORPORATION LIMITED
DIAMOND DRILL RECORD
JOURNAL DE SONDAGE DE DIAMANT**

HOLE NO. M-16
NO. DU TROU
SHEET NO. 1 of 1
NO. DE FEUILLE
LOCATION 8+15N
ENDROIT 0+00

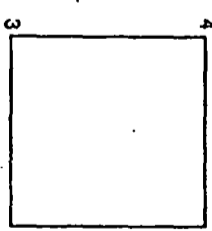
PROPERTY RAFFER (06414)
PROPRIETE

K 490413

BEARING Grid W
DIRECTION
DIP -45°
PENTE

STARTED June 10, 1981
COMMENCE LE

COMPLETED June 18, 1981
TERMINE LE



ELEVATION
ELEVATION
TOTAL DEPTH 121.0'
PROFONDEUR TOTALE
CORE SIZE EXT
DIMENSION DE CARROTE

FROM DE	TO A	DESCRIPTION	SAMPLE NO. D'ECHANT.	FROM DE	TO A	LENGTH LONG-UEUR	CORE RECOVERED CARROTE RECOURVE	ASSAYS ANALYSES		REMARKS REMARQUES
0	1.0	CASING								
1	121.0	METAGABBRO Medium to coarse grained, dark green with 60-70% hornblende 40-30% plagioclase. 27.5-30.1 Coarse white pegmatite moderately well zoned 1"-2" quartz - tourmaline boarder zone 10" intermediate zone of Id-mica + albite + k-spar + cleavlandite + muscovite + apfite + tantalite blocky k-spar zone with minor quartz + cleavlandite intermediate zone apfite + Id-mica + albite + k-spar + tantalite 1" quartz - tourmaline boarder zone. 38.0-38.4 Irregular quartz vein 76.0-76.3 Quartz vein. Contacts sharp at 75° to core axis. 90.0-90.1 Quartz vein. at 15° to core axis normal to foliation. 93.0-93.2 Black tourmaline vein at 75° to core axis. 107.0-102.1 Black tourmaline vein at 75° to core axis.	2462	27.5	30.1	2.6				
	121.0	END OF HOLE.								

DRILLED BY
SONDAGE PAR SFGCO INC.

SIGNED
JOURNAL PARA.P. Pryslak

**DIAMOND DRILL RECORD
JOURNAL DE SONDAGE DE DIAMANT**

HOLE NO. M-17
NO. DU TROU

SHEET NO. 1 of 1
NO. DE FEUILLE

LOCATION 4+00N
ENDROIT 4+60W

PROPERTY RAFTER (06414)
PROPRIETE

K 533091

BEARING Grid W
DIRECTION
DIP -45
PENTE

STARTED June 19, 1981
COMMENCE LE

COMPLETED June 22, 1981
TERMINE LE

ELEVATION
ELEVATION
TOTAL DEPTH 118.0'
PROFONDEUR TOTALE
CORE SIZE EXT
DIMENSION DE CARROTE

FROM DE	TO A	DESCRIPTION	SAMPLE NO. DECHANT	FROM DE	TO A	LENGTH LONGUEUR	CORE RECOVERED CARROTE RECOUVRE	ASSAYS ANALYSES		REMARKS REMARQUES
0	2.0	CASING								
2.0	118.0	ULTRAMAFIC Medium grained, grey, massive talc + serpentine + magnetite. 10-15% magnetite with dark green chloritic matrix at 46.5-48.0 and 56.0-57.5: Remainder of core has less than 5% magnetite.								
	118.0	END OF HOLE.								

DRILLED BY SELCO INC.
SONDAGE PAR

SIGNED A.P. Prystak
JOURNAL PAR