

CON. X

15

CON. IX

14

CON. VIII

13

CON. VII

12

11

10

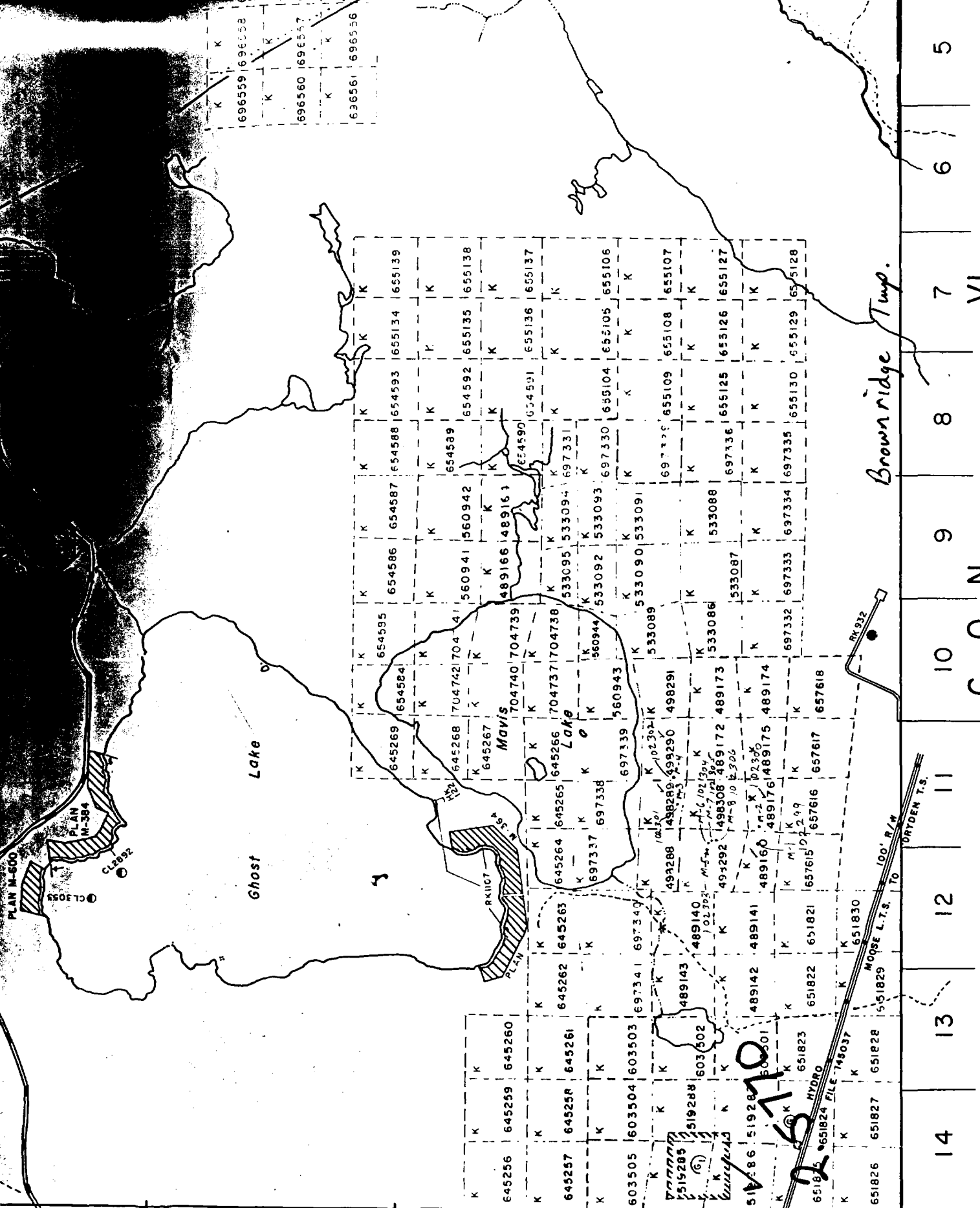
9

8

7

6

5



Brownridge Twp.

CON. N.

ZEAL AND TD M 2001

25170



52F15SE0120 13 BROWNRIDGE

010

MINING LANDS SECTION

Diamond Drilling

Township BROWNRIDGE

Report No. 13

Work performed by: SELCO MINING CORPORATION LIMITED

Claim No	Hole No	Footage	Date	Note
K 489160	M-1	157.0	June/79	(1) (2) (7)
K 489176	M-2	195.0	June/79	(2) (8)
K 498289	M-3	147.0	July/79	(3) (4)
K 498290	M-4	197.0	July/79	(4) (5)
K 498292	M-5	123.0	Sept./80	(6)
	M-6	129.0	Sept./80	(6)
	M-7	103.0	Sept./80	(6)
	M-8	102.0	Sept./80	(6)

Notes: (1) # 44-79 (6) # 40-80
 (2) # 45-79 (7) # 61-80
 (3) # 53-79 (8) # 22-81
 (4) # 17-80
 (5) # 34-80

DIAMOND DRILL RECORD

PROPERTY Rafter - Fairservice Option

HOLE NO. M-1

SHEET NO 2 of 2

LOCATION 10,700 E
1,225 S

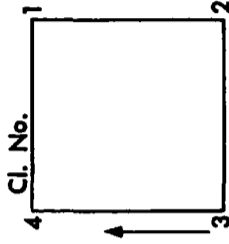
ELEVATION

TOTAL DEPTH 157'

CORE SIZE EXT

COMPLETED June 23/79

STARTED June 21/79



FROM	TO	DESCRIPTION	SAMPLE NO.	FROM	TO	CORE LENGTH	CORE RECOVERED	ASSAYS		REMARKS
2	121.9	Pegmatite Contacts at 85° to C.A. and are tourmalinised over ½ to 1 inch. Mainly quartz + K-spar with 75% aplite.								
9	139.0	Amphibolite Similar to above								
0	139.5	Pegmatite Similar to above								
5	157.0	Amphibolite Similar to above								

DIAMOND DRILL RECORD

HOLE NO. M-2
 SHEET NO 1 of 1
 LOCATION 11,100 E
 1,200 S

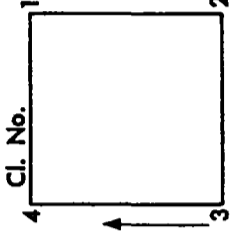
PROPERTY Rafter - Fairservice Option K489176

BEARING 353° A
 DIP COLLAR -50°

ELEVATION

TOTAL DEPTH 195.0'

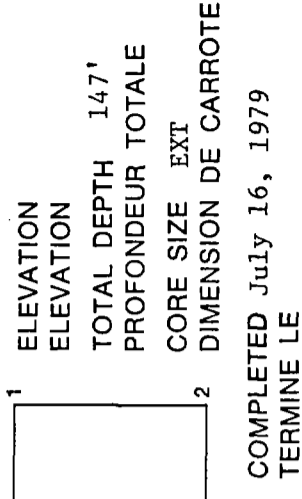
CORE SIZE EXT



STARTED June 28/79 COMPLETED July 2/79

FROM	TO	DESCRIPTION	SAMPLE NO.	FROM	TO	CORE LENGTH	CORE RECOVERED	ASSAYS		REMARKS
0	4.0	Casing								
0	170.3	Amphibolite Alternating feldspathic and amphibole rich layers (meta-andesite tuff) layering at 20° to C.A. 150-157 - 10% po, tr. cp.								
0.3	179.3	Pegmatite C. gr., pink, tourmalinized for 6" along contacts. Upper contact at 70° to C.A., lower contact not cored. Composition essentially quartz + K-spar with minor yellowish mica and rare tourmaline. 10% spodumene at 173.5-174.0								
9.5	190.6	Amphibolite Medium grained, dark green, massive								
90.6	192.4	Pegmatite Similar to above. Contacts at 80° and 60° to C.A.								
92.4	195.0	Amphibolite Similar to above.								
	195.0	E.O.H.								

DIAMOND DRILL RECORD
JOURNAL DE SONDAGE DE DIAMANT



HOLE NO. M-3
NO. DU TROU
SHEET NO. 1 of 1
NO. DE FEUILLE
LOCATION 11500E
ENDROIT 2+25N

PROPERTY RAFTER (MAVIS LAKE) (K 498289)
PROPRIETE
BEARING 187°
DIRECTION
DIP -50°
PENITE

STARTED July 12, 1979
COMMECE LE
COMPLETED July 16, 1979
TERMINE LE

FROM DE	TO A	DESCRIPTION DESCRIPTION	SAMPLE NO. D'ECHANT.	FROM DE	TO A	LENGTH LONG- UEUR	CORE RECOV- ERED CARROTE RECOURVE	ASSAYS ANALYSES		REMARKS REMARQUES
0	32.0	CASING								
32.0	41.7	META-ANDESITE Fine-medium grained, well foliated to banded andesite tuff consisting of 40% amphibole, 10% biotite, 50% quartz plus feldspar. Foliation at 60° to core axis.	0589	41.7	46.7	5.0				
41.7	78.6	PEGMATITE White to pink, poorly zoned into wall zone and center spodumene zone. Minor aplitic banding at 53.0 to 66.5. 41.7-42.2: Wall zone, fine grained, pale pink comprising of quartz plus feldspar plus minor yellow-green mica. 42.2-77.4: Spodumene zone 15-20% spod with quartz plus feldspar. Minor yellow-green mica, trace deep blue apalite, rare crystals of tantalite - brownish alteration of spodumene at 42.2-44.0. 76.5-77.4: 10% yellow-green mica plus cleavandite. 77.4-78.6: Wall zone quartz plus K-spar plus yellow-green mica. Upper contact is sharp at 55° to core axis. Lower contact is wavy at 80° to core axis.	0590 0591 0592 0593 0594 0595	46.7 51.7 56.7 61.7 66.7 71.7 78.6	51.7 56.7 61.7 66.7 71.7 78.6	5.0 5.0 5.0 5.0 5.0 5.0 6.9				
78.6	147.0	META-ANDESITE Banded plus well foliated, similar to section at 32.0-41.7.								
147.0		END OF HOLE.								

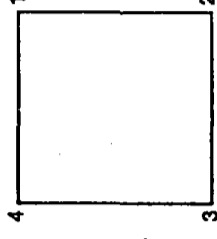
SELCO MINING CORPORATION LIMITED
DIAMOND-DRILL RECORD
JOURNAL DE SONDAGE DE DIAMANT

HOLE NO. M-4
 NO. DU TROU
 SHEET NO. 1 of 2
 NO. DE FEUILLE 12175E
 LOCATION 2475N
 ENDROIT

PROPERTY RAFTER (MAVIS LAKE)
 PROPRIETE

BEARING 187°
 DIRECTION
 DIP -50°
 PENTE

ELEVATION
 ELEVATION
 TOTAL DEPTH 197'
 PROFONDEUR TOTALE
 CORE SIZE EXT
 DIMENSION DE CARROTE



STARTED July 12, 1979 COMPLETED July 16, 1979
 COMMENCE LE TERMINE LE

FROM DE	TO A	DESCRIPTION DESCRIPTION	SAMPLE NO. NO. D'ECHANT.	FROM DE	TO A	LENGTH LONG- UEUR	CORE RECOV- ERED CARROTE RECOURVRE	ASSAYS ANALYSES					REMARKS REMARQUES	
								Ta 20%	Nb 2%	Sn 2%	Li 20%	Other		
0	12.0	CASING												
12.0	33.5	META-ANDESITE TUFF Fine-medium grained, well banded with alternating light and dark green bands up to 1/2" thick. Dark bands composed essentially of hornblende. Lighter bands contain quartz-feldspar-biotite.												
33.5	42.3	PEGMATITE Spodumene-bearing dike zoned into narrow fine grained wall sections and a coarse grained center zone with grain size to one inch. 33.6-34.0: Wall zone comprised essentially of quartz plus feldspar plus minor mica. Weak brownish alteration. 34.0-42.0: Spodumene Zone. - relatively equigranular with no aplite banding. Comprised of quartz plus feldspar plus 10-15% spodumene. Minor white to yellowish-green mica and rare tantalite crystals. - minor biotite at 40.0-42.0'. - brown alteration patches of spodumene at 41.0-42.0.	0596 0597	33.5 38.5	38.5 42.3			Tr. Tr.	0.01 0.01	0.009 0.022	1.62 1.15			
42.3	197.0	META-ANDESITE TUFF Similar to section at 12.0-33.5'. Well banded plus foliated amphibolite.												

DRILLED BY

Selco

SIGNED

ORIGINAL

Private

DIAMOND DRILL RECORD
JOURNAL DE SONDAGE DE DIAMANT

HOLE NO. M-4
NO. DU TROU 2 of 2
SHEET NO. 12175E
NO. DE FEUILLE 2+75N
LOCATION 12175E
ENDROIT 2+75N

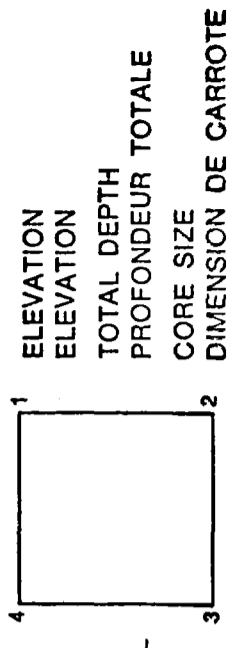
PROPERTY
PROPRIETE

BEARING
DIRECTION

DIP
PENTE

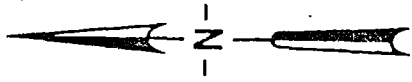
STARTED
COMMENCE LE

COMPLETED
TERMINE LE

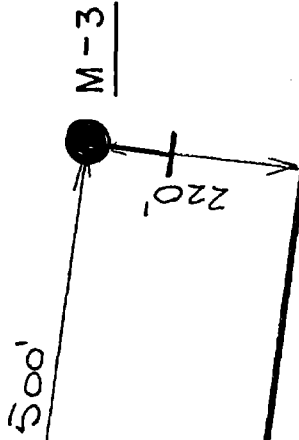


ELEVATION
ELEVATION
TOTAL DEPTH
PROFONDEUR TOTALE
CORE SIZE
DIMENSION DE CARROTE

FROM DE	TO A	DESCRIPTION DESCRIPTION	SAMPLE NO. NO. D'ECHANT.	FROM DE	TO A	LENGTH LONG- UEUR	CORE RECOV- ERED CARROTE RECOURVE	ASSAYS ANALYSES	REMARKS REMARQUES
42.3	197.0	META-ANDESITE TUFF (Continued) 96.0-96.2: Quartz plus aplite 105.6-105.8: Quartz plus aplite plus tourmaline 139.0-139.3: 50% black tourmaline in aplite. Contacts at 80° to core axis. The above interse- ctions are wall zone material.							
197.0		END OF HOLE							



K-498289



2

3

SELCO MINING CORPORATION LIMITED

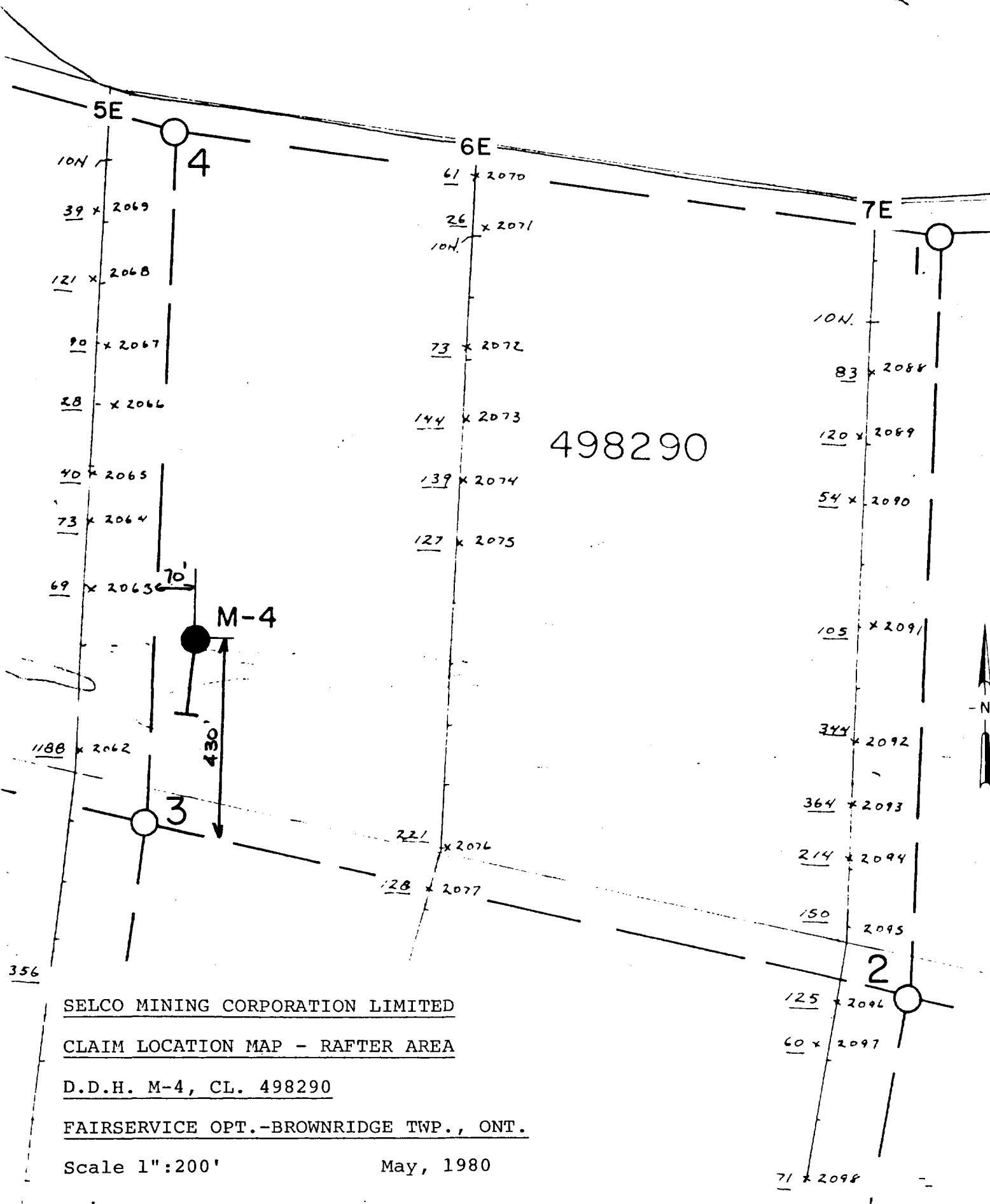
CLAIM LOCATION SKETCH - FAIRSERVICE OPTION

D.D.H. M-3, CL. K-498289)

BROWNBRIDGE TOWNSHIP, ONTARIO

Scale 1" = 200'

October, 1979



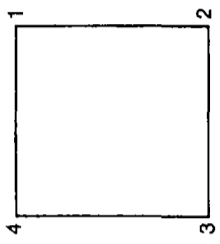
SELCO MINING CORPORATION LIMITED
CLAIM LOCATION MAP - RAFTER AREA
D.D.H. M-4, CL. 498290
FAIRSERVICE OPT.-BROWNRIDGE TWP., ONT.
 Scale 1":200' May, 1980

DIAMOND DRILL RECORD
JOURNAL DE SONDAGE DE DIAMANT

HOLE NO. M-5
NO. DU TROU
SHEET NO. 1 of 1
NO. DE FEUILLE
LOCATION 28+80E
ENDROIT 6+00S

PROPERTY RAFTER - FAIRSERVICE OPTION (K 498292)
PROPRIETE

BEARING 180°
DIRECTION
DIP -45°
PENTE



ELEVATION 123.0
TOTAL DEPTH
CORE SIZE EXT.
DIMENSION DE CARROTE

STARTED Sept. 5/80
COMMENCE LE
COMPLETED Sept. 12/80
TERMINE LE

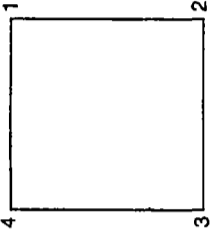
FROM DE	TO A	DESCRIPTION DESCRIPTION	SAMPLE NO. NO. D'ECHANT.	FROM DE	TO A	LENGTH LONG- UEUR	CORE RECOV- ERED CARROTE RECOUVRE	ASSAYS ANALYSES		REMARKS REMARQUES
0	4.0	CASING (Pulled)								
4.0	109.0	MAFIC METAVOLCANICS Well foliated, amphibole rich rocks, uniform to banded flows and tuffs. 31.0-31.5: Quartz + K-spar + mica pegmatite @ 65° to core axis. Minor tourmaline. 44.5-44.9: Pegmatite - similar to above - contacts at 80° to core axis. 51.8-54.0: Quartz + K-spar + white to yellow mica + pale green beryl + tourmaline.	5652 5653 5654	31.0 44.4 51.8	31.5 45.0 54.0	0.5 0.6 2.2				
109.0	123.0	FELSIC METAVOLCANICS Dacitic to rhyolitic tuffs, bedded at 70° to core axis. END OF HOLE.								

DIAMOND DRILL RECORD
JOURNAL DE SONDAGE DE DIAMANT

HOLE NO. NO. DU TROU M-6
SHEET NO. 1 of 1
NO. DE FEUILLE 27+00E
LOCATION 5+60S
ENDROIT

PROPERTY RAFTER - FAIRSERVICE OPTION (K 498292)
PROPRIETE

BEARING 185° Az.
DIRECTION
DIP -47°
PENTE



ELEVATION 129.0'
ELEVATION
TOTAL DEPTH 129.0'
PROFONDEUR TOTALE
CORE SIZE EXT
DIMENSION DE CARROTE

STARTED Sept. 13/80 COMPLETED Sept. 20/80
COMMENCE LE TERMINE LE

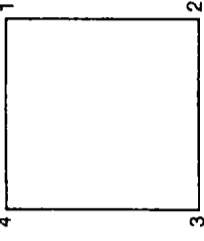
FROM DE	TO A	DESCRIPTION	SAMPLE NO. NO. D'ECHANT.	FROM DE	TO A	LENGTH LONGUEUR	CORE RECOVERED CARROTE RECOURVE	ASSAYS ANALYSES		REMARKS REMARQUES
0	6.0	CASING - Pulled								
6.0	83.0	MAFIC METAVOLCANICS Amphibole-rich metavolcanics, varying from well foliated uniform flows to well banded tuffs; banding at 75° to core axis. 19.0-20.0: Pegmatite at 80° to core axis. Quartz + K-spar minor muscovite. 48.0-48.5: Mud seam and pegmatite similar to above. 49.0-49.5: White quartz 69.2-70.0: White quartz-contacts at 80° to core axis.								
83.0	122.0	FELSIC METAVOLCANICS Dacitic to rhyolitic tuffs, well bedded at 80° to core axis, with massive pyrite, trace sphalerite at 121.5-121.7.								
122.0	129.0	MAFIC METAVOLCANICS Similar to above.								
	129.0	END OF HOLE.								

DIAMOND DRILL RECORD
JOURNAL DE SONDAGE DE DIAMANT

HOLE NO. M-7
NO. DU TROU
SHEET NO. 1 of 1
NO. DE FEUILLE
LOCATION 26+70E
ENDROIT 6+15S

PROPERTY RAFTER - FAIRSERVICE OPTION (K 498292)
PROPRIETE

BEARING 180°
DIRECTION
DIP -50°
PENTE



ELEVATION
ELEVATION
TOTAL DEPTH 103.0'
PROFONDEUR TOTALE
CORE SIZE EXT.
DIMENSION DE CARROTE

STARTED Sept. 21, 1980
COMMENCE LE
COMPLETED Sept. 25, 1980
TERMINE LE

FROM DE	TO A	DESCRIPTION DESCRIPTION	SAMPLE NO. NO. D'ECHANT.	FROM DE	TO A	LENGTH LONG. UEUR	CORE RECOV. ERED CARROTE RECOURVRE	ASSAYS ANALYSES		REMARKS REMARQUES
0	4.0	CASING (Pulled)								
4.0	34.0	MAFIC METAVOLCANICS Fine to medium grained, well foliated amphibole-rich metovolcanics, varying from uniform to well banded. Foliation and banding at 75° to core axis. 7.6-7.8: Quartz + K-spar pegmatite at 80° to core axis. 16.0-16.3: White quartz vein - barren.								
34.0	88.0	FELSIC METAVOLCANICS Very well banded tuffs with occasional coarse clastic sections. Bedding at 60-65° to core axis. 38.0-38.2: Quartz + K-spar pegmatite at 75° to core axis.								
88.0	103.0	MAFIC METAVOLCANICS Fine-medium grained, uniform, foliated amphibolite with occasional banding.								
	103.0	END OF HOLE.								

DIAMOND DRILL RECORD
JOURNAL DE SONDAGE DE DIAMANT

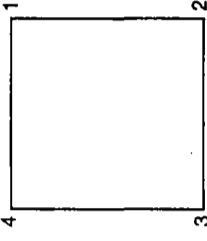
HOLE NO. M-8
NO. DU TROU
SHEET NO. 1 of 1
NO. DE FEUILLE
LOCATION 26+70E
ENDROIT 7+40S

PROPERTY RAFTER - FAIRSERVICE OPTION
PROPRIETE

(K 498292)

BEARING N (Az.)
DIRECTION

DIP -45°
PENTE

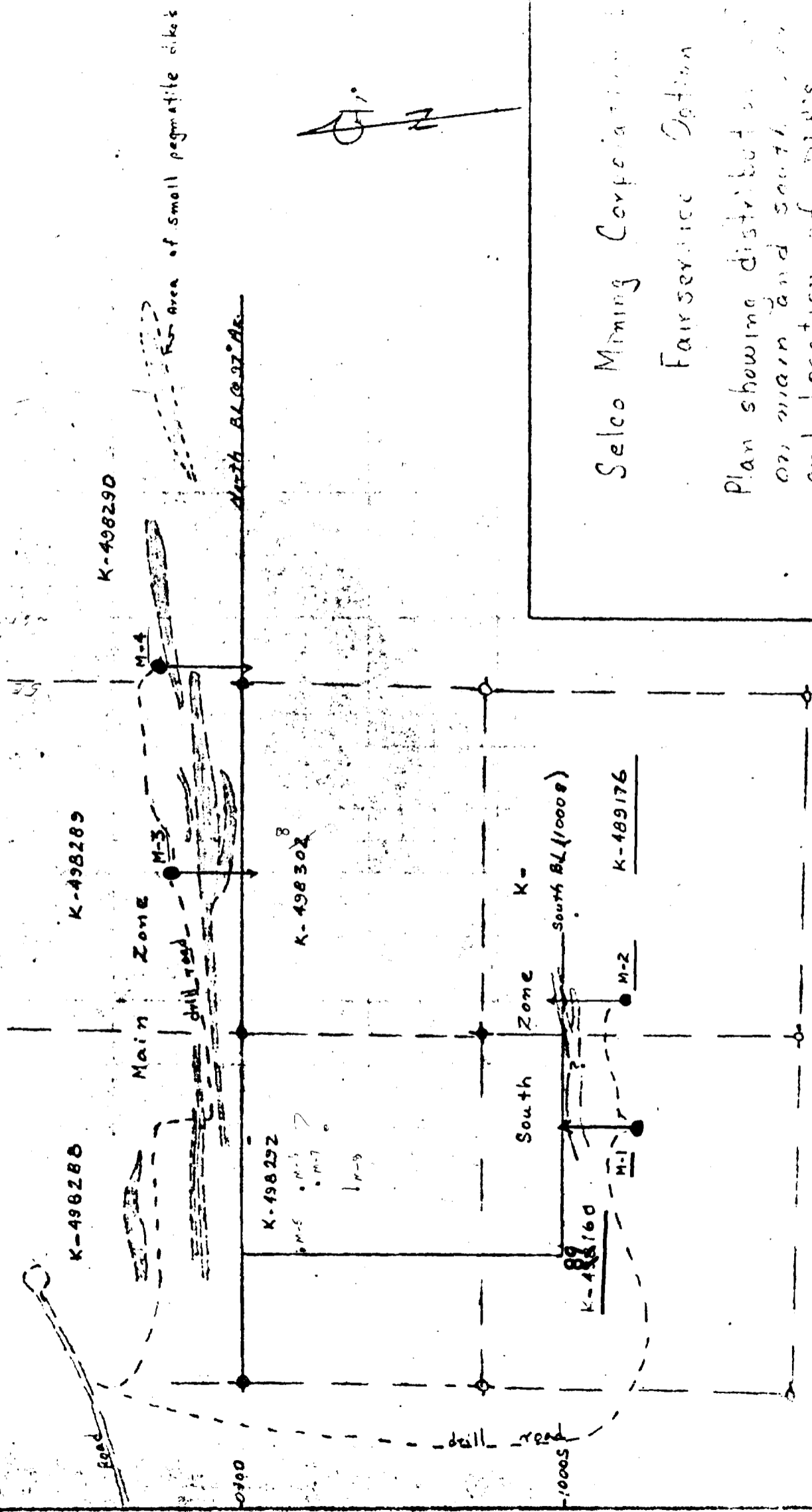


ELEVATION
ELEVATION
TOTAL DEPTH 102.0'
PROFONDEUR TOTALE
CORE SIZE EXT.
DIMENSION DE CARROTE

STARTED Sept. 26, 1980
COMMENCE LE
COMPLETED Oct. 3, 1980
TERMINE LE

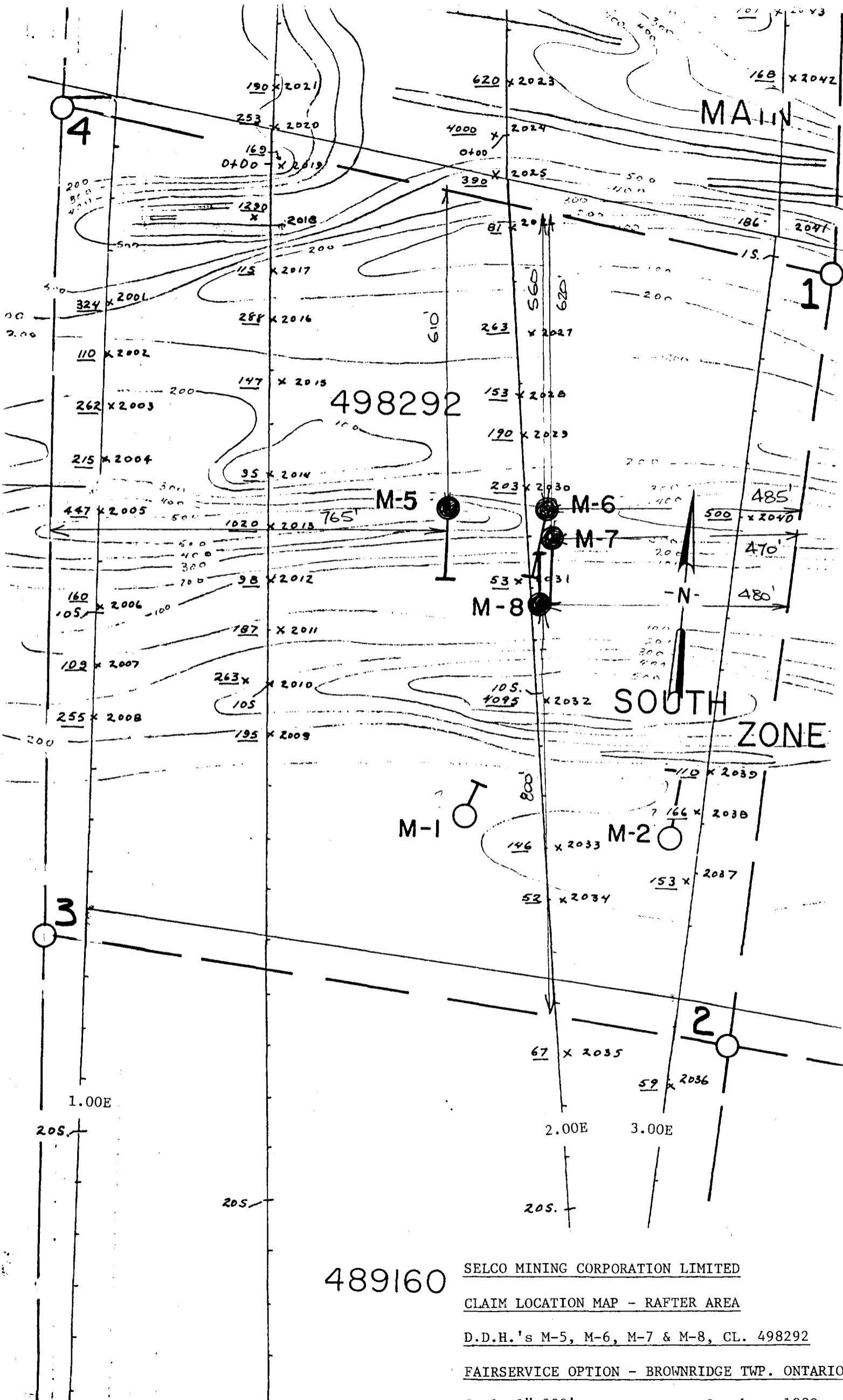
FROM DE	TO A	DESCRIPTION DESCRIPTION	SAMPLE NO. NO. D'ECHANT.	FROM DE	TO A	LENGTH LONG. UEUR	CORE RECOV. ERED CARROTE RECOURVE	ASSAYS ANALYSES		REMARKS REMARQUES
0	2.0	CASING (Pulled)								
2.0	55.0	MAFIC METAVOLCANICS Hornblende + Feldspar, uniform and strongly foliated to well banded with bedding at 30° to core axis. 8.0-9.0: Rhyolite tuff with thin beds of pyrite and aggregates of anthophyllite. 14.0-14.2: Pegmatite - quartz + K-spar + minor tourmaline. Feldspar is greenish in colour. Contacts are sharp at 80° to core axis. 32.5-32.7: Pink, quartz-feldspar pegmatite. Contacts at 70° to core axis.								
55.0	102.0	FELSIC METAVOLCANICS Very well bedded at 30-35° to core axis. Biotitic + sericitic tuffs with occasional band of pyrite up to 0.1 inches thick.								
	102.0	END OF HOLE.								

10300E
10700E
11100E
11500E
11900E
12300E
12700E
13100E



Selco Mining Corporation
 Fair Service Option
 Plan showing distribution of claims
 on main and south zones
 and location of drill's.

A.P. Pyslak, July, 1970



489160

SELCO MINING CORPORATION LIMITED
 CLAIM LOCATION MAP - RAFTER AREA
 D.D.H.'s M-5, M-6, M-7 & M-8, CL. 498292
 FAIRSERVICE OPTION - BROWNRIDGE TWP. ONTARIO

Scale 1":200' October, 1980

