

**DIAMOND DRILL HOLE # B/F - 4**

**Addendum to Work Report #W.0210.01724**

**On**

**Emerald Fields Resource Corporation's**

**1546 Pine Portage Road**

**Kenora, Ontario P9N 2K2**

**Brownridge (Ghost Lake) Property**

**Brownridge Township**

**Kenora Mining Division, Ontario - 10**

**(NTS 52F/15SE)**

**by**

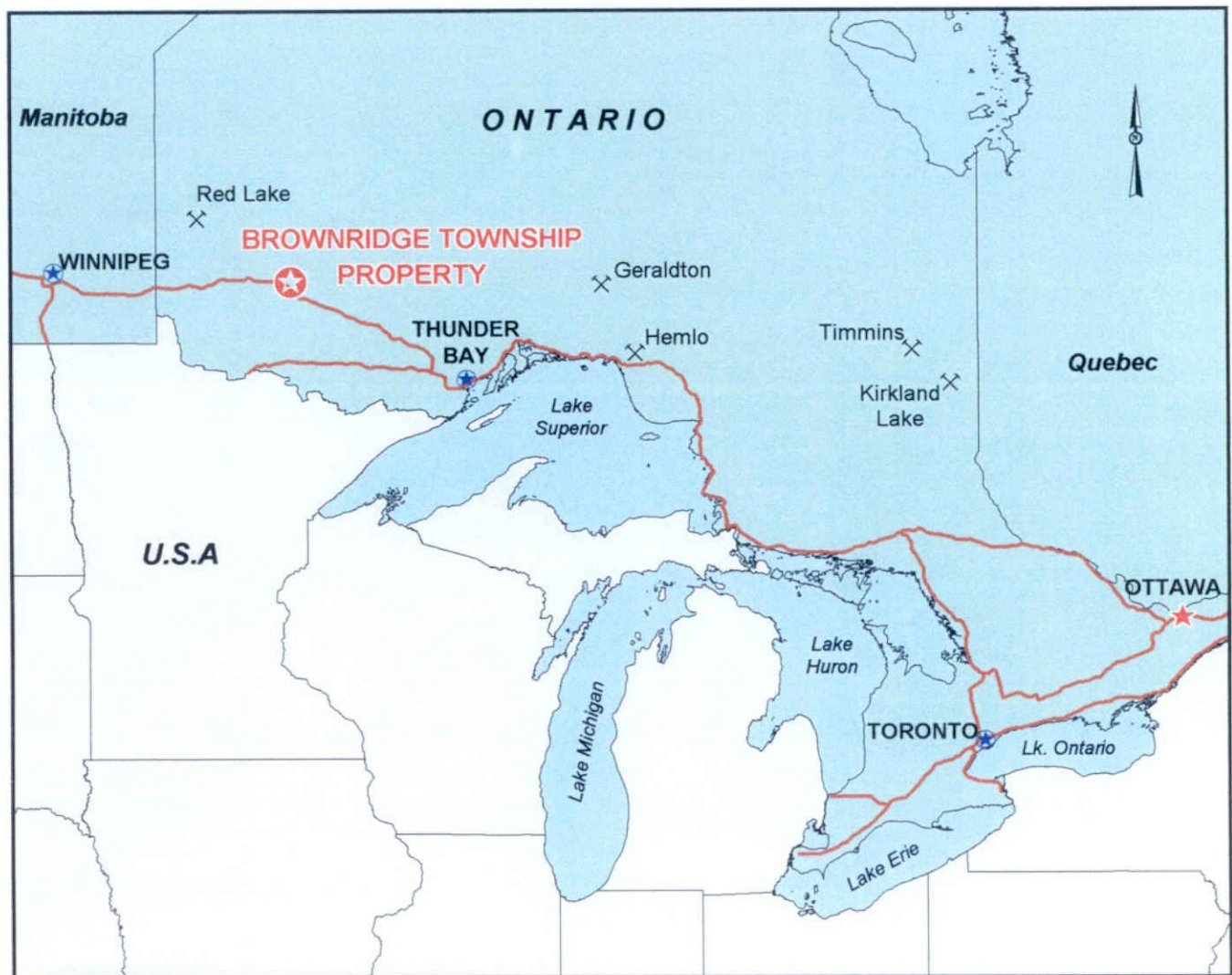
**Alasdair J.M. Mowat, C.E.T.**

**Kenora, Ontario P9N 2K2**

**February 14<sup>th</sup>, 2004**



# **Emerald Fields Resource Corporation BROWNRIDGE TOWNSHIP PROPERTY Location Map**

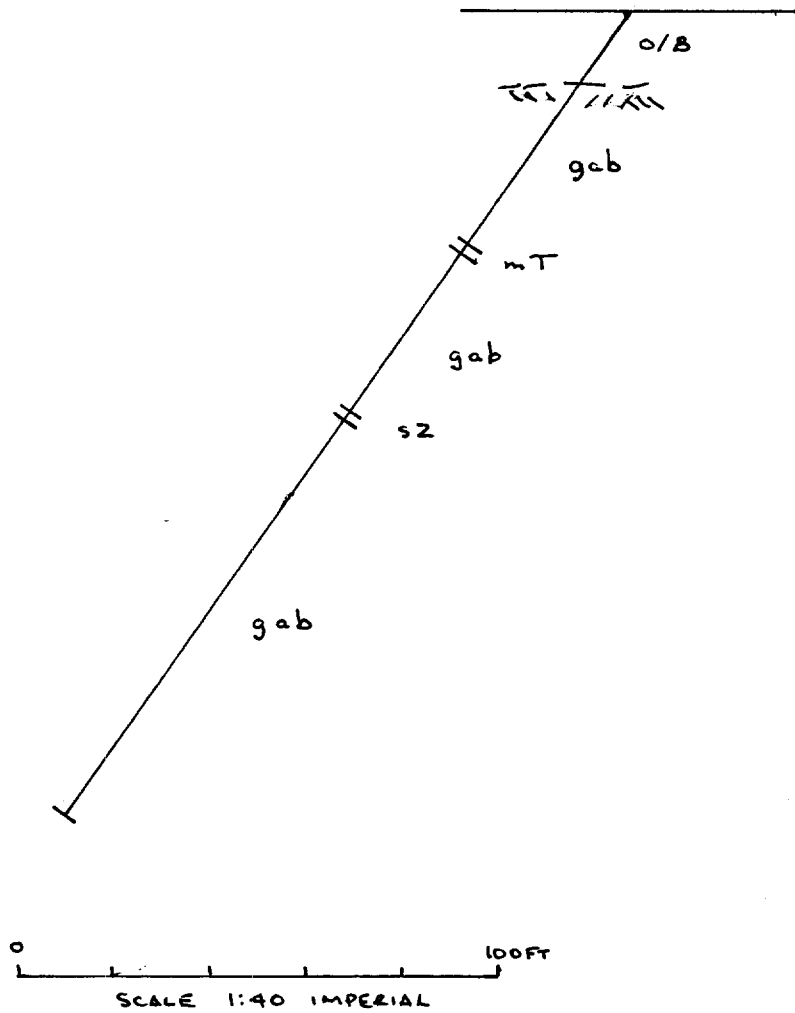


BRN\_location.wor/Aug.2003

Scale: 1:10,000,000



NORTH - WEST



LEGEND

- o/B overburden
- gab gabbro
- mT mafic tuff
- sZ silicified zone

EMERALD FIELDS RESOURCE  
CORPORATION  
BROWNRIDGE (GHOST LAKE)  
PROJECT

DRILL HOLE BF-09  
AZIMUTH 315°  
DIP -55° N  
FOOTAGE 206 FT.

— NORTH - EAST FACING —

A. MOWAT



Date / Time of Issue: Fri Feb 20 14:41:21 EST 2004

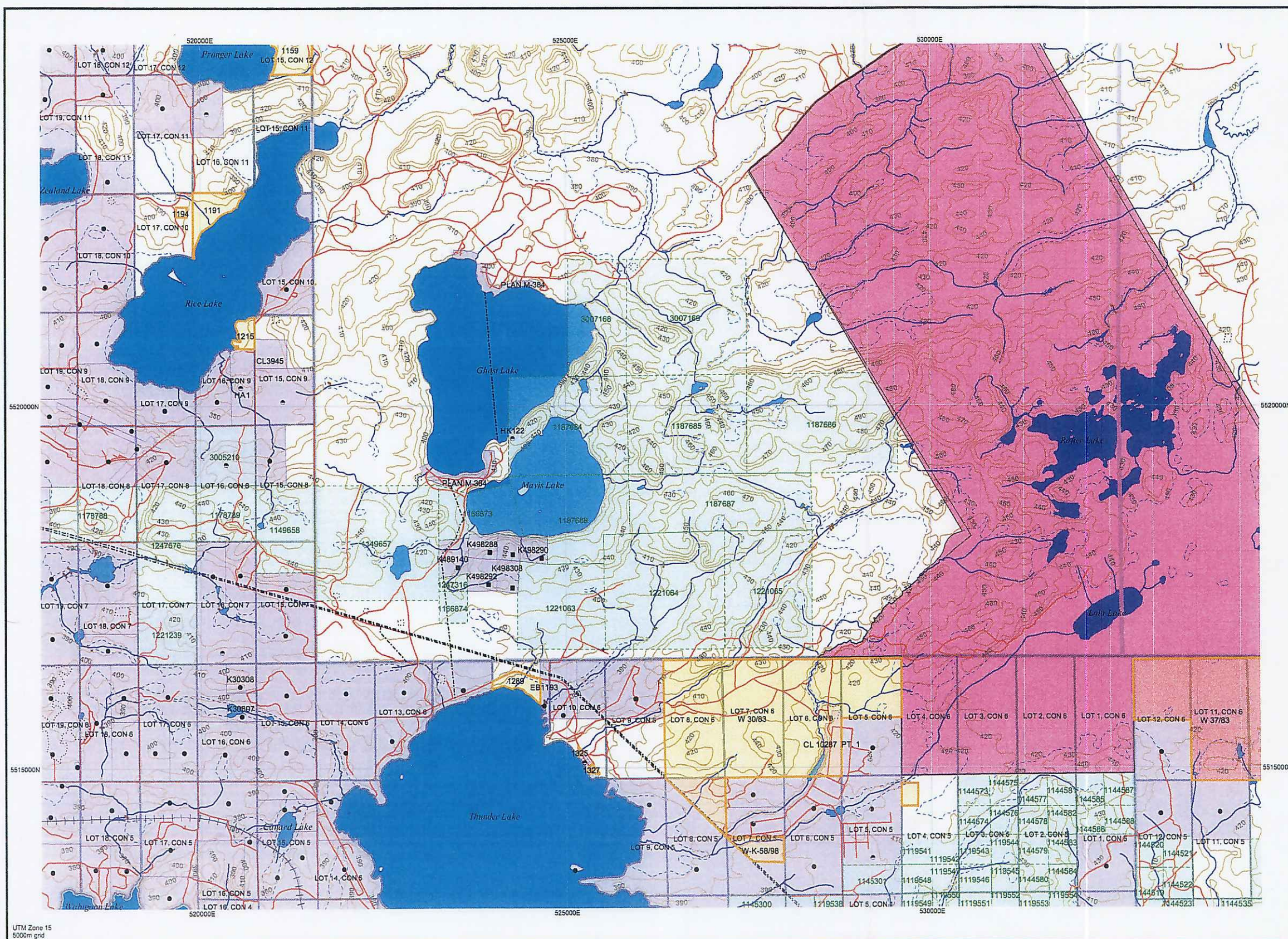
TOWNSHIP / AREA  
BROWNRIDGE

PLAN  
G-0814

ADMINISTRATIVE DISTRICTS / DIVISIONS

Mining Division  
Land Titles/Registry Division  
Ministry of Natural Resources District

Kenora  
KENORA  
DRYDEN



TOPOGRAPHIC

- Administrative Boundaries
- Township
- Concession, Lot
- Provincial Park
- Indian Reserve
- Cliff, Pit & Pile
- Contour
- Mine Shatts
- Mine Hooframe
- Railway
- Road
- Trail
- Natural Gas Pipeline
- Utilities
- Tower

Land Tenure

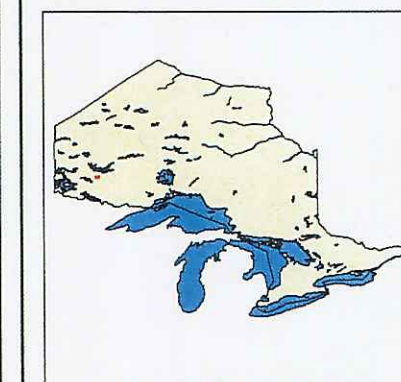
- Freehold Patent**
  - Surface And Mining Rights
  - Surface Rights Only
  - Mining Rights Only
- Leasehold Patent**
  - Surface And Mining Rights
  - Surface Rights Only
  - Mining Rights Only
- Licence of Occupation**
  - Uses Not Specified
  - Surface And Mining Rights
  - Surface Rights Only
  - Mining Rights Only
  - Land Use Permit
  - Order In Council (Not open for staking)
  - Water Power Lease Agreement

- Mining Claim
- Filed Only Mining Claims

LAND TENURE WITHDRAWALS

- Areas Withdrawn from Disposition
- Mining Acts Withdrawal Types**
  - Surface And Mining Rights Withdrawn
  - Surface Rights Only Withdrawn
  - Mining Rights Only Withdrawn
- Order In Council Withdrawal Types**
  - Surface And Mining Rights Withdrawn
  - Surface Rights Only Withdrawn
  - Mining Rights Only Withdrawn

IMPORTANT NOTICES



Those wishing to stake mining claims should consult with the Provincial Mining Recorders' Office of the Ministry of Northern Development and Mines for additional information on the status of the lands shown hereon. This map is not intended for navigational, survey, or land title determination purposes as the information shown on this map is compiled from various sources. Completeness and accuracy are not guaranteed. Additional information may also be obtained through the local Land Titles or Registry Office, or the Ministry of Natural Resources.

The information shown is derived from digital data available in the Provincial Mining Recorders' Office at the time of downloading from the Ministry of Northern Development and Mines web site.

**General Information and Limitations**  
 Contact Information:  
 Provincial Mining Recorders' Office  
 Willet Miller Centre 933 Ramsey Lake Road  
 Sudbury ON P3E 6B5  
 Home Page: [www.mndm.gov.on.ca/MNDMMINES/LANDS/mlsmppge.htm](http://www.mndm.gov.on.ca/MNDMMINES/LANDS/mlsmppge.htm)

Toll Free  
 Tel: 1 (888) 415-9845 ext 5789  
 Fax: 1 (877) 670-1444

Map Datum: NAD 83  
 Projection: UTM (8 degree)  
 Topographic Data Source: Land Information Ontario  
 Mining Land Tenure Source: Provincial Mining Recorders' Office

This map may not show unregistered land tenure and interests in land including certain patents, leases, easements, right of ways, flooding rights, licences, or other forms of disposition of rights and interest from the Crown. Also certain land tenure and land uses that restrict or prohibit free entry to stake mining claims may not be illustrated.



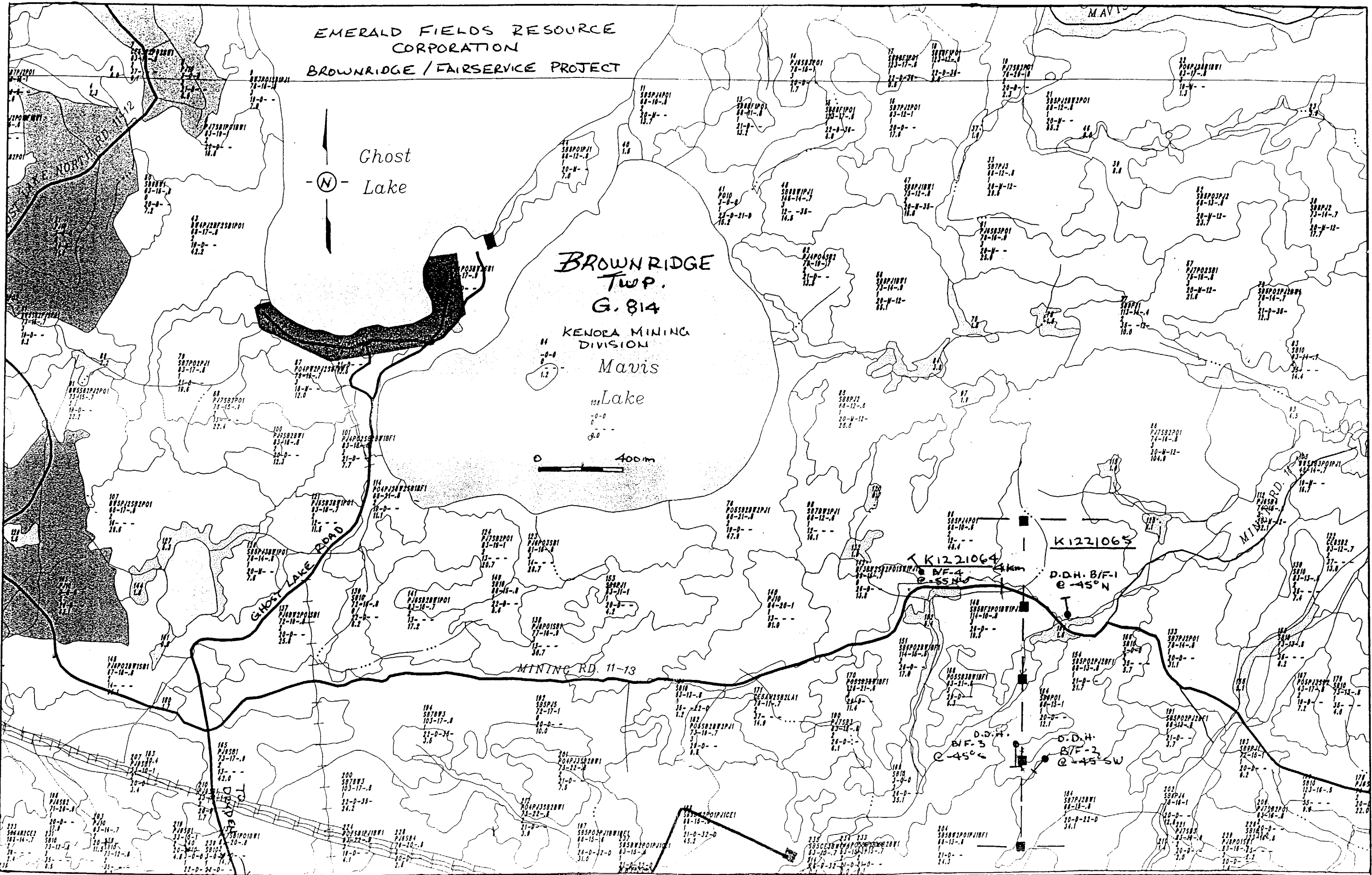
EMERALD FIELDS RESOURCE CORPORATION  
BROWNRIDGE / FAIRSERVICE PROJECT

Ghost Lake

BROWNRIDGE TWP.  
G. 814

KENORA MINING DIVISION

Mavis Lake



K1221065

K1221064

D.D.H. B/F-1  
E-45°N

B/F-4  
E-55°W

D.D.H. B/F-3  
E-45°W

D.D.H. B/F-2  
E-45°SW



Ministry of  
Northern Development  
and Mines

Ministère du  
Développement du Nord  
et des Mines



Date: 2004-MAR-01

GEOSCIENCE ASSESSMENT OFFICE  
933 RAMSEY LAKE ROAD, 6th FLOOR  
SUDBURY, ONTARIO  
P3E 6B5

EMERALD FIELDS RESOURCE CORPORATION  
1546 PINE PORTAGE RD.,  
KENORA, ONTARIO  
P9N 2K2 CANADA

Tel: (888) 415-9845  
Fax: (877) 670-1555

**Submission Number:** 2.27259  
**Transaction Number(s):** W0410.00328

Dear Sir or Madam

**Subject: Approval of Assessment Work**

We have approved your Assessment Work Submission with the above noted Transaction Number(s). The attached Work Report Summary indicates the results of the approval.

At the discretion of the Ministry, the assessment work performed on the mining lands noted in this work report may be subject to inspection and/or investigation at any time.

If you have any question regarding this correspondence, please contact STEVEN BENETEAU by email at [steve.beneteau@ndm.gov.on.ca](mailto:steve.beneteau@ndm.gov.on.ca) or by phone at (705) 670-5855.

Yours Sincerely,

A handwritten signature in black ink that reads "Ron C. Gashinski".

Ron C. Gashinski  
Senior Manager, Mining Lands Section

**Cc:** Resident Geologist

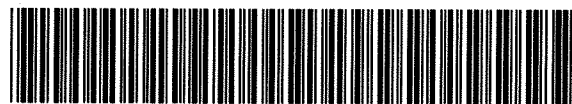
Alasdair James Mowat  
(Agent)

Emerald Fields Resource Corporation  
(Assessment Office)

Assessment File Library

Emerald Fields Resource Corporation  
(Claim Holder)





52F15SE2018 2.27259 BROWNBRIDGE

200

ONTARIO CANADA

MINISTRY OF NORTHERN DEVELOPMENT AND MINES  
PROVINCIAL MINING RECORDERS' OFFICE

Mining Land Tenure Map

Date / Time of Issue: Mon Mar 29 13:44:12 EST 2004

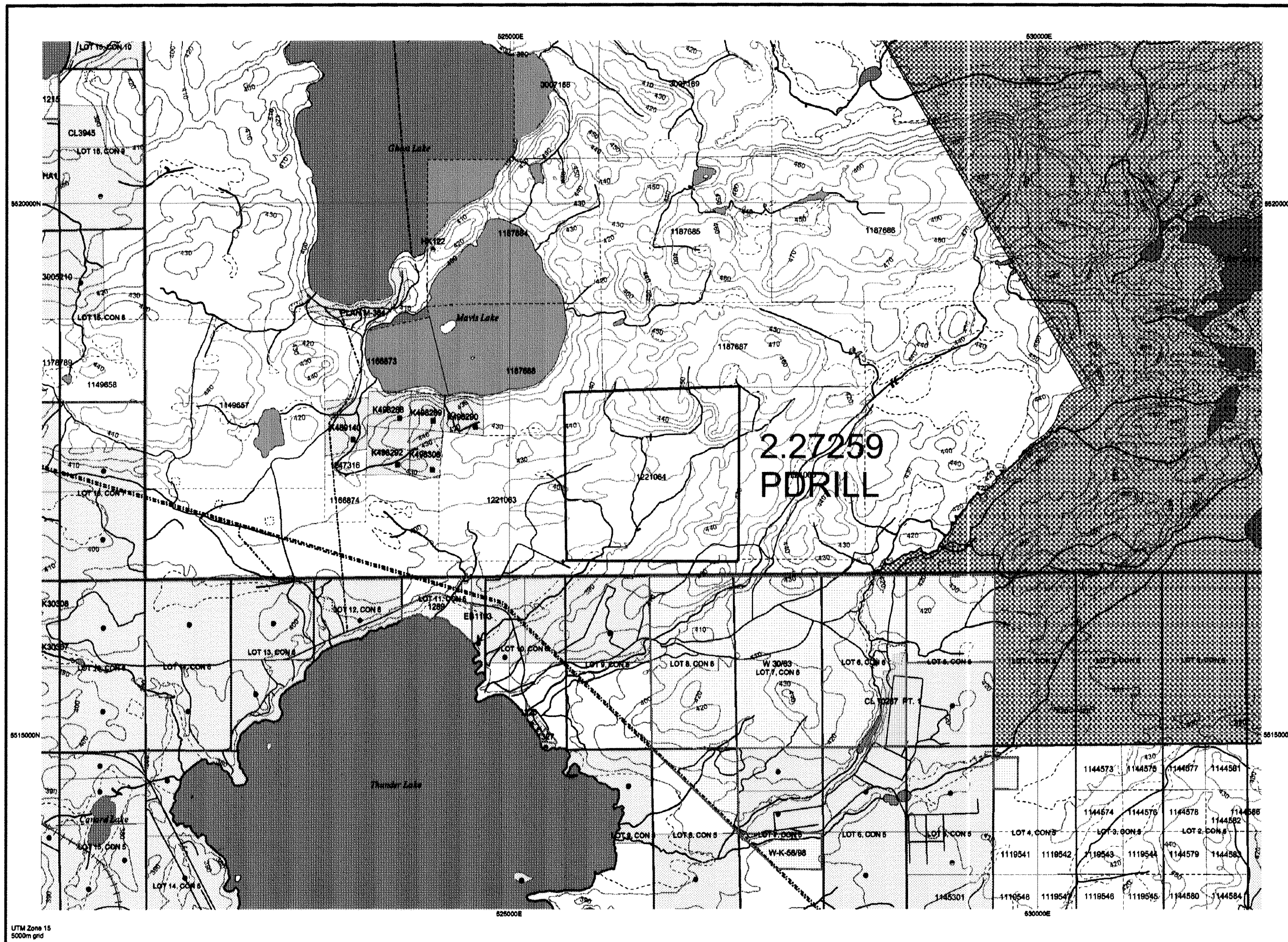
TOWNSHIP / AREA  
BROWNBRIDGE

PLAN  
G-0814

ADMINISTRATIVE DISTRICTS / DIVISIONS

Mining Division  
Land Titles/Registry Division  
Ministry of Natural Resources District

Kenora  
KENORA  
DRYDEN

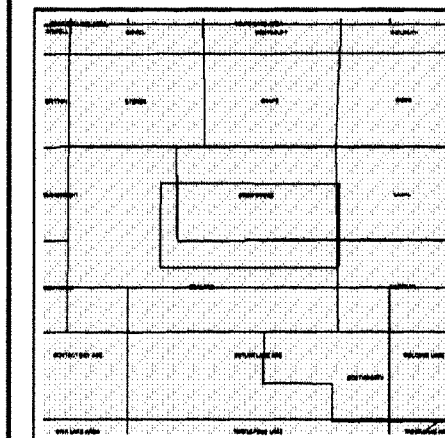


TOPOGRAPHIC

- Administrative Boundaries
- Township
- Concession, Lot
- Provincial Park
- Indian Reserve
- Cliff, Pit & Pile
- Contour
- Mine Shafts
- Mine Headframe
- Railway
- Road
- Trail
- Natural Gas Pipeline
- Utilities
- Tower

Land Tenure

- Freehold Patent**
  - Surface And Mining Rights
  - Surface Rights Only
  - Mining Rights Only
- Leasehold Patent**
  - Surface And Mining Rights
  - Surface Rights Only
  - Mining Rights Only
- License of Occupation**
  - Uses Not Specified
  - Surface And Mining Rights
  - Surface Rights Only
  - Mining Rights Only
  - Land Use Permit
  - Order In Council (Not open for staking)
  - Water Power Lease Agreement



LAND TENURE WITHDRAWALS

- 1254 Area Withdrawn from Disposition
- Mining Acts Withdrawal Types**
  - Surface And Mining Rights Withdrawn
  - Surface Rights Only Withdrawn
  - Mining Rights Only Withdrawn
- Order In Council Withdrawal Types**
  - Surface And Mining Rights Withdrawn
  - Surface Rights Only Withdrawn
  - Mining Rights Only Withdrawn

IMPORTANT NOTICES



LAND TENURE WITHDRAWAL DESCRIPTIONS

Identifier	Type	Date	Description
1191	Warn	Jan 1, 2001	39(D) RBO 1950 JULY 14/59 SR 15552
1216	Warn	Jan 1, 2001	39(D) RBO 1950 JULY 14/59 SR 15552
1289	Warn	Jan 1, 2001	RES. FOR PUBLIC USE MAY 30/55 117735
1325	Warn	Jan 1, 2001	RES. FOR PUBLIC USE 14661
1327	Warn	Jan 1, 2001	RES. FOR PUBLIC USE 14661
1383	Warn	Jan 1, 2001	PRIVATE HYDRO LINE OCT.3/56 SR 52397
1402	Warn	Jan 1, 2001	PLANTATION JUNE 23/55 SR 13645
W 30/83	Warn	Dec 20, 1983	NURSERY W 30/83 DEC.20/83 SR +MR
W-K-58/88	Ws	Dec 16, 1998	Section 35, The Mining Act, S.R.O. 1990 Order #W-K-58/88 98/12/16 195150

Those wishing to stake mining claims should consult with the Provincial Mining Recorders' Office of the Ministry of Northern Development and Mines for additional information on the status of the lands shown hereon. This map is not intended for navigational, survey, or land title determination purposes as the information shown on this map is compiled from various sources. Completeness and accuracy are not guaranteed. Additional information may also be obtained through the local Land Titles or Registry Office, or the Ministry of Natural Resources.

The information shown is derived from digital data available in the Provincial Mining Recorders' Office at the time of downloading from the Ministry of Northern Development and Mines web site.

General Information and Limitations

Contact Information:  
Provincial Mining Recorders' Office  
Willie Green Miller Centre 933 Ramsey Lake Road  
Sudbury ON P3E 8B5  
Home Page: [www.mndm.gov.on.ca/MNDM/MINES/LANDS/miampg.htm](http://www.mndm.gov.on.ca/MNDM/MINES/LANDS/miampg.htm)

Toll Free  
Tel: 1 (888) 415-9845 ext 5788  
Fax: 1 (877) 670-1444

Map Datum: NAD 83  
Projection: UTM (5 degree)  
Topographic Data Source: Land Information Ontario  
Mining Land Tenure Source: Provincial Mining Recorders' Office

This map may not show unregistered land tenure and interests in land including certain patents, leases, easements, right of ways, flooding rights, licences, or other forms of disposition of rights and interest from the Crown. Also certain land tenure and land uses that restrict or prohibit free entry to stake mining claims may not be illustrated.