



52F15SE8305 16 ZEALAND

Diamond Drilling

Township of ZEALAND
----- ?

Report NO 16

Work performed by: Lun-Echo Gold Mines *Ad.*

Claim NO	Hole NO	Footage	Date	Note
K 20031	N-9	70.0'	Sept/56	
K 20032	N-1	62.0' <i>62.1'</i>	Aug/56	
	N-2	58.0' <i>57.7'</i>	Aug/56	
	N-3	68.0' <i>68.6'</i>	Aug/56	
	N-3-A	✓ 103.0' <i>103.0'</i>	Aug/56	
	N-4	93.0' <i>93.5'</i>	Aug/56	
	N-5	71.0' <i>71.0'</i>	Sept/56	
	N-6	96.0' <i>96.2'</i>	Sept/56	
	N-7	92.0' <i>92.3'</i>	Sept/56	
	N-8	88.0' <i>88.3'</i>	Sept/56	
<i>K20031</i>	N-9	✓ 70.0' <i>70.0'</i>	Sept/56	

Notes:

CORE LOG

HOLE NO. N-1

FROM	TO	DESCRIPTION
		Hole N-1 Collar Location: 600 E; 33 S Angle: 45 degrees
0	8.2	Pegmatite, tourmaline, Slight lithium reaction with flame but no spodumene.
8.2	26.5	Dense dark biotite schist. A little scattered mineralization
26.5	40.0	Pegmatite, tourmaline
40.0	58.1	Biotite schist
58.1	61.1	Pegmatite, tourmalinized
61.1	62.1	END

Note: The hole undercut the sulphide zone without encountering any sulphides.

HOLE STARTED - 12 Aug 56 COMPLETED - 14 Aug 56 CONTRACTOR - A. Lantz

<p>LEGEND</p> <p><input type="checkbox"/> P Pegmatite</p> <p><input type="checkbox"/> S Biotite schist</p> <p><input type="checkbox"/></p> <p><input type="checkbox"/></p> <p><input type="checkbox"/></p> <p><input type="checkbox"/></p> <p><input type="checkbox"/></p>	<p>MINE - LUN-ECHO GOLD MINES LIMITED</p> <p>PROPERTY - MAVIS LAKE - COPPER SHOWING</p> <p>HOLE NO. <u>N-1</u> INCLINED <u>45</u> BEARING <u>North</u></p> <p>COLLAR LOCATION - <u>33 N</u> <u>600 E</u></p> <p style="text-align: center;">- INCLINATIONS -</p> <p>LOGGED BY - <i>George B. Darling</i></p> <p>DRAWN BY - " " "</p> <p>ASSAYS BY - Sudbury Assay Office</p> <p style="text-align: right;">SCALE 1" = 40'</p> <p style="text-align: right;">DATE - 25 Aug 56</p>
---	--

CORE LOG

HOLE NO. N-2

FROM	TO	DESCRIPTION
		<u>HOLE N-2</u>
0	14.0	Biotite schist
14.0	36.1	Quartz biotite schist
36.1	37.0	Quartz stringer, pyrite
37.0	39.7	Quartz biotite schist
39.7	57.7	Pegmatite, tourmaline, slight lithia test with flame, no spodumene.
		END

HOLE STARTED - 14 Aug 56 COMPLETED - 10 Aug 56 CONTRACTOR - A. Lantz

LEGEND

<input type="checkbox"/> P	PEGMATITE
<input type="checkbox"/> S	BIOTITE SCHIST
<input type="checkbox"/>	
<input type="checkbox"/>	
<input type="checkbox"/>	
<input type="checkbox"/>	
<input type="checkbox"/>	

MINE - LUN-ECHO GOLD MINES LIMITED
 PROPERTY - MAVIS LAKE
 HOLE NO. N-2 INCLINED 45 BEARING SOUTH
 COLLAR LOCATION - 23 N 500 E
 - INCLINATIONS -

LOGGED BY George B. Darling
 DRAWN BY - " " "
 ASSAYS BY - Not sampled

SCALE 1" = 40'
 DATE - 20 Aug 56

CORE LOG

HOLE NO. N-3

FROM	TO	DESCRIPTION
<u>HOLE N-3</u> 45 deg.		
0	5.0	Casing
5.0	16.0	Biotite schist, chloritic, a little pyrite and chalcopyrite
16.0	30.5	Quartz biotite tourmaline schist complex, lightly mineralized from 20.0 - 24.0; from 24.0 to 30.5 heavily mineralized with pyrrhotite, pyrite lesser chalcopyrite.
30.5	32.6	Pegmatite
32.6	40.6	Mineralized biotite schist, pyrrhotite with minor chalcopyrite
40.6	68.6	Pegmatite
	68.6	END
<u>HOLE N-3A</u> 75 deg.		
0	2.4	Casing
2.4	36.8	Biotite schist
36.8	46.3	Pegmatite, quartz, pink feldspar, tourmaline
46.3	50.9	Quartz biotite schist
50.9	51.2	Pegmatite
51.2	54.5	Quartz biotite schist
54.5	57.0	75% sulphides, mostly pyrrhotite, minor chalcopyrite, biotite schist
57.0	103.0	Biotite schist, widely disseminated pyrrhotite, minor chalcopyrite
	103.0	Bleb chalcopyrite at 91.5 END

HOLE STARTED- 16 Aug 56 COMPLETED- 17 Aug 56 CONTRACTOR- A. Lantz

LEGEND

- P Pegmatite
- S Biotite schist
- TS Tourmaline biotite schist complex
-
-
-
-

MINE - LUN-ECHO GOLD MINES LIMITED
 PROPERTY - MAVIS LAKE - COPPER SHOWING
 HOLE NO. N-3, 3A INCLINED 45, 75 BEARING South
 COLLAR LOCATION - 429 E 5 N
 - INCLINATIONS -

LOGGED BY - *George B. Darling*
 DRAWN BY - " "
 ASSAYS BY - Sudbury Assay Office

SCALE 1" = 40'
 DATE - 20 Aug 56

CORE ASSAYS

SAMPLE	FROM	TO	FEET	% Cu	% Ni	Au	Ag	DESCRIPTION
<u>HOLE N-5</u>								
299	20.0	24.0	4.0	0.10	0.04	Nil	Nil	
300	24.0	30.8	6.8	0.28	0.28	Nil	Tr	
Gap	30.8	32.8	2.0					Pegmatite, no value
32.8	32.8	40.8	8.0	0.47	0.27			
 <u>HOLE N-3A</u>								
401	54.5	57.0	2.5	1.31	0.26			

CORE LOG

HOLE NO. N-4

FROM	TO	DESCRIPTION
		<u>HOLE - N-4</u>
0	19.2	Biotite schist
19.2	20.5	Sulphides, pyrrhotite and minor chalcopyrite
20.5	27.7	Schist, minor sulphides
27.7	28.4	Pegmatite
28.4	31.6	Schist
31.6	31.8	Pegmatite
31.8	52.6	Schist
52.6	53.0	Pegmatite
53.0	57.3	Schist
57.3	57.6	Pegmatite
57.6	63.8	Schist
63.8	69.2	Pegmatite
69.2	93.5	Schist
	93.5	END

HOLE STARTED - 22 Aug 56 COMPLETED - 23 Aug 56 CONTRACTOR - A. Kantz

LEGEND

- P PEGMATITE
- S SCHIST (BIOTITE)
-
-
-
-
-

MINE - LUN-ECHO GOLD MINES LIMITED
 PROPERTY - Mavis Lake Property - Copper showing
 HOLE NO. N-4 INCLINED 45 BEARING North
 COLLAR LOCATION - 15 S 400 E
 - INCLINATIONS -

LOGGED BY - *George B. Darling*
 DRAWN BY - " " "
 ASSAYS BY - Sudbury Assay Office

SCALE 1" = 40'
 DATE - 25 Aug 56

CORE ASSAYS

SAMPLE	FROM	TO	FEET	% Cu	% Ni		DESCRIPTION
413	19.2	20.5	1.3	0.93	0.27		

CORE LOG

HOLE NO. N-5

FROM	TO	DESCRIPTION
<u>HOLE N-5</u>		
0	1.8	Casing
1.8	12.0	Biotite schist
12.0	13.6	Biotite schist with 2-3% pyrrhotite and minor chalcopyrite
13.6	71.6	Biotite schist
	71.6	END

HOLE STARTED - 4 Sep 56 COMPLETED - 6 Sep 56 CONTRACTOR - A. Lentz

LEGEND

- P Pegmatite
- S Biotite schist
-
-
-
-
-

MINE - LUN-ECHO GOLD MINES LIMITED
 PROPERTY - Mavis Lake - Copper Showing
 HOLE NO. N-5 INCLINED 45 BEARING North
 COLLAR LOCATION - 15 S 300 E
 - INCLINATIONS -

LOGGED BY - George B. Darling SCALE 1" = 40'
 DRAWN BY - " " DATE - 6 Sep 56
 ASSAYS BY - None

CORE LOG

HOLE NO. N-6

FROM	TO	DESCRIPTION
<u>HOLE N-6</u>		
0	2.0	Casing
2.0	30.4	Biotite schist, sulphides
30.4	36.7	Pegmatite, tourmaline, pink feldspar
36.7	80.0	Biotite schist
80.0	83.0	Pegmatite
83.0	96.2	Biotite schist
	96.2	END

HOLE STARTED- 7 Sep 56n COMPLETED- 9 Sep 56 CONTRACTOR- A. Lantz

LEGEND

<input type="checkbox"/> P	PEGMATITE
<input type="checkbox"/> S	BIOTITE SCHIST
<input type="checkbox"/>	
<input type="checkbox"/>	
<input type="checkbox"/>	
<input type="checkbox"/>	
<input type="checkbox"/>	

MINE - LUN-ECHO GOLD MINES LIMITED
 PROPERTY - Mavis Lake - Copper Showing
 HOLE NO. N-6 INCLINED 45 BEARING South
 COLLAR LOCATION - 600 E 50 N
 - INCLINATIONS -

LOGGED BY George B. Darling
 DRAWN BY - " " "
 ASSAYS BY - SUDBURY ASSAY OFFICE

SCALE 1" = 40'
 DATE - 9 Sep 56

CORE ASSAYS

SAMPLE	FROM	TO	FEET	% Cu	% Ni	DESCRIPTION
422	75.0	80.0	5.0	0.11	0.10	

CORE LOG

HOLE NO. N-7

FROM	TO	DESCRIPTION
<u>HOLE N-7</u>		
0	2.5	Casing
2.5	13.6	Biotite schist
13.6	14.4	Quartz
14.4	19.0	Biotite schist
19.0	24.4	Biotite schist with pyrrhotite, pyrite, minor chalcopyrite
24.4	26.3	Pegmatite, tourmaline
26.3	31.4	Biotite schist, minor sulphides
31.4	41.6	Pegmatite
41.6	43.4	Biotite schist, minor sulphides
43.4	43.8	Pegmatite, scattered sulphides, schist and breccia
43.8	44.0	Biotite schist, minor sulphides
44.0	46.7	Pegmatite
46.7	47.4	Biotite schist, sulphides
47.4	47.9	Pegmatite
47.9	75.0	Biotite schist
75.0	78.0	Biotite schist, pyrrhotite and a little chalcopyrite
78.0	78.2	Pegmatite
78.2	82.0	Biotite schist
82.0	82.6	Pegmatite
82.6	92.3	Biotite schist, quartz
	92.3	END

HOLE STARTED - 10 Sep 56 COMPLETED - 11 Sep 56 CONTRACTOR - A. Lantz

LEGEND

- P Pegmatite
- S Biotite schist
-
-
-
-
-

MINE - LUN-ECHO GOLD MINES LIMITED
 PROPERTY - Mavis Lake - Copper Showing
 HOLE NO. N-7 INCLINED 45 BEARING South
 COLLAR LOCATION - 700 E 9 N

- INCLINATIONS -

LOGGED BY - George B. Darling SCALE 1" = 40'
 DRAWN BY - " " DATE - 15 Sep 56
 ASSAYS BY - None

CORE LOG

HOLE NO. N-8

FROM	TO	DESCRIPTION
<u>Hole N-8</u>		
0	43.0	Biotite schist
43.0	44.0	Biotite schist, sulphides, mostly pyrrhotite, a little chalcopyrite
44.0	88.3	Biotite schist
	88.3	END

HOLE STARTED - 12 Sep 56 COMPLETED - 13 Sep 56 CONTRACTOR - LANTZ

LEGEND

P	PEGMATITE
S	BIOTITE SCHIST

MINE - LUN-ECHO GOLD MINES LIMITED
 PROPERTY - MAVIS LAKE - COPPER SHOWING
 HOLE NO. N-8 INCLINED 45 BEARING
 COLLAR LOCATION - 200 E 30S
 - INCLINATIONS -

LOGGED BY - George B. Darling
 DRAWN BY -
 ASSAYS BY - None

SCALE 1" = 40'
 DATE - 15 Sep 56

CORE LOG

HOLE NO. N-9

FROM TO

DESCRIPTION

HOLE N-9

0 69.0
69.0 70.0
70.0

Biotite schist
Pegmatite
END

HOLE STARTED- 15 Sep 56 COMPLETED- 16 Sep 56 CONTRACTOR- A. LANTZ

LEGEND

- P PEGMATITE
- S BIOTITE SCHIST
-
-
-
-
-

MINE - LUN-ECHO GOLD MINES LIMITED
 PROPERTY - MAVIS LAKE - Copper Showing
 HOLE NO. N-9 INCLINED 45 BEARING _____
 COLLAR LOCATION - 100 E 63 S
 - INCLINATIONS -

LOGGED BY - *George B. Darling*
 DRAWN BY - " "
 ASSAYS BY - None

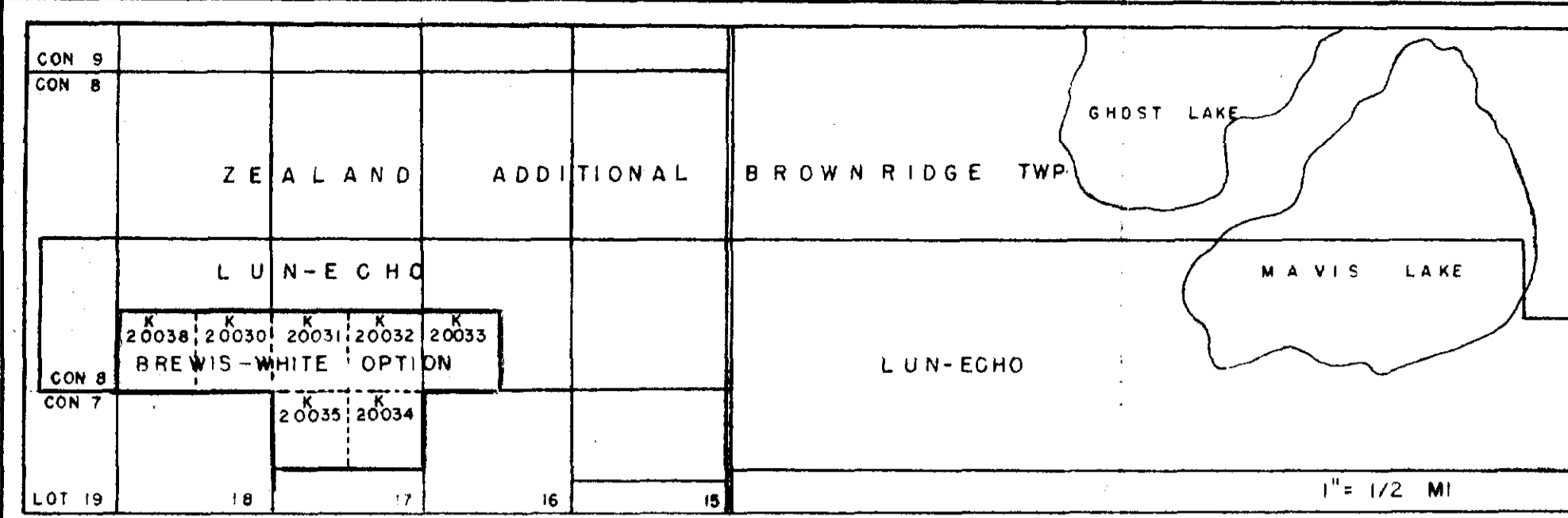
SCALE 1" = 40'
 DATE - 20 Sep 56

DIAMOND DRILLING RESULTS - MAVIS LAKE PROPERTY

SECTION	COLLAR LOCATION	HOLE	ANGLE	FROM	TO	CORE LENGTH	TRUE WIDTH	% LITHIA	FOOTWALL OF INTERSECTION	
									SLOPE DEPTH FROM SURFACE	ELEVATION
I0335E	654M	B-11	75	302.7	316.0	13.3	11.0	Nil	390.0	9575.00
I0400E	383 N	E-11	45	9.0	26.6	17.5	16.0	1.46%	47.0	9903.00
	384 N	E-11A	75	4.0	25.5	21.5	21.0	1.08%	64.0	9898.00
I0600 E	99 N	E-14	45	40.8	61.8	21.0	10.0	0.654%	45.0	9952.00
I0700 E	153 N	E-9	45	28.2	33.2	5.0	5.0	0.83%	31.0	9953.00
I0800 E	144 N	E-7	45	14.0	19.0	5.0	5.0	0.72%	15.0	9972.00
	718 N	B-10	75	212.9	216.9	4.0	4.0	Nil	185.0	9855.00
I1000E	718N	B-10A	80	202.5	210.0	1.5	1.5	Nil	340.0	9785.00
	153 N	E-10	45	8.7	18.8	10.1	9.5	0.79%	18.0	9976.00
	154 N	E-10A	75	9.0	16.5	7.6	7.0	0.81%	30.0	9973.00
	722 N	B-9	75	306.6	307.5	0.9	0.9	Nil	480.0	9720.00
I1200 E	316 N	B-8	40	154.6	175.5	21.0	21.0	0.909	120.0	9900.00
	316 N	B-8A	80	163.6	170.5	7.0	6.5	Nil	230.0	9842.00
I1334 E	117 N	E-5	45	1.8	12.8	10.0	9.5	2.76%	10.0	9985.00
I1400E	121 N	E-4	45	2.0	25.0	23.0	23.0	1.50%	19.0	9978.00
	665 N	B-7	75	376.8	407.0	30.2	30.2	0.917	490.0	9658.00
I1430E	121 N	B-3	45	0.3	15.0	14.7	10.0	1.27%	16.0	9975.00
I1484E	124 N	E-2	45	5.0	14.3	9.3	9.3	1.00%	17.0	9979.00
	125 N	E-2A	75	10.0	19.2	9.2	7.0	1.26%	28.0	9972.00
	124 N	E-2	45	30.0	40.8	10.8	10.0	1.49%	35.0	9961.00
	80 N	E-8	90	1.3	15.0	13.7	13.7	1.17%	15.0	9973.00
	53 N	E-6	90	2.1	11.4	9.3	9.3	0.58%	9.0	9967.00
I1534E	118 N	E-1	45	5.0	40.0	35.0	35.0	1.20%	37.0	9966.00
I1600E	316 N	B-5	45	136.4	140.5	4.1	4.1	Nil	96.0	9914.00
	324 N	B-5A	75	164.1	172.2	8.1	7.0	Low	190.0	9847.00
	633 N	B-6	70	373.5	386.7	13.2	12.0	Low	355.0	9725.00
I1700E	173 N	B-21	45	21.4	35.0	13.6	13.6	0.96%	30.0	9990.00
	173 N	B-21	45	44.5	65.7	21.2	21.2	1.22%	60.0	9968.00
	173 N	B-21	45	91.6	116.0	24.4	24.4	1.13%	107.0	9933.00
	356 N	B-1	45	155.9	162.7	6.9	6.9	0.57%	157.0	9904.00
	358 N	B-1A	75	188.5	198.5	10.0	9.0	1.37%	262.0	9827.00
I1800E	189 N	B-20	45	66.4	96.1	29.7	29.7	1.52%	60.0	9965.00
I1900E	324 N	B-4	75	140.3	153.5	13.5	11.0	0.66%	192.0	9876.00
I2000E	252N	E-19	45	41.5	49.1	7.6	7.0	0.37%	73.0	9962.00
I2300E	272 N	B-18	45	14.0	27.5	13.5	13.5	1.17%	23.0	9926.00
I2400E	267 N	B-16	45	0	19.2	19.2	19.2	1.51%	21.0	9920.00
	341 N	B-17	45	45.0	70.0	28.0	25.0	0.768%	64.0	9890.00
	577 N	B-2	45	204.5	210.2	5.7	5.7	Nil	247.0	9777.00
I2450E	307 N	B-15	45	0	26.6	26.6	26.6	0.675%	30.0	9913.00
I3200E	510 N	B-3	45	170.9	171.6	1.9	1.9	Nil	156.0	9831.00

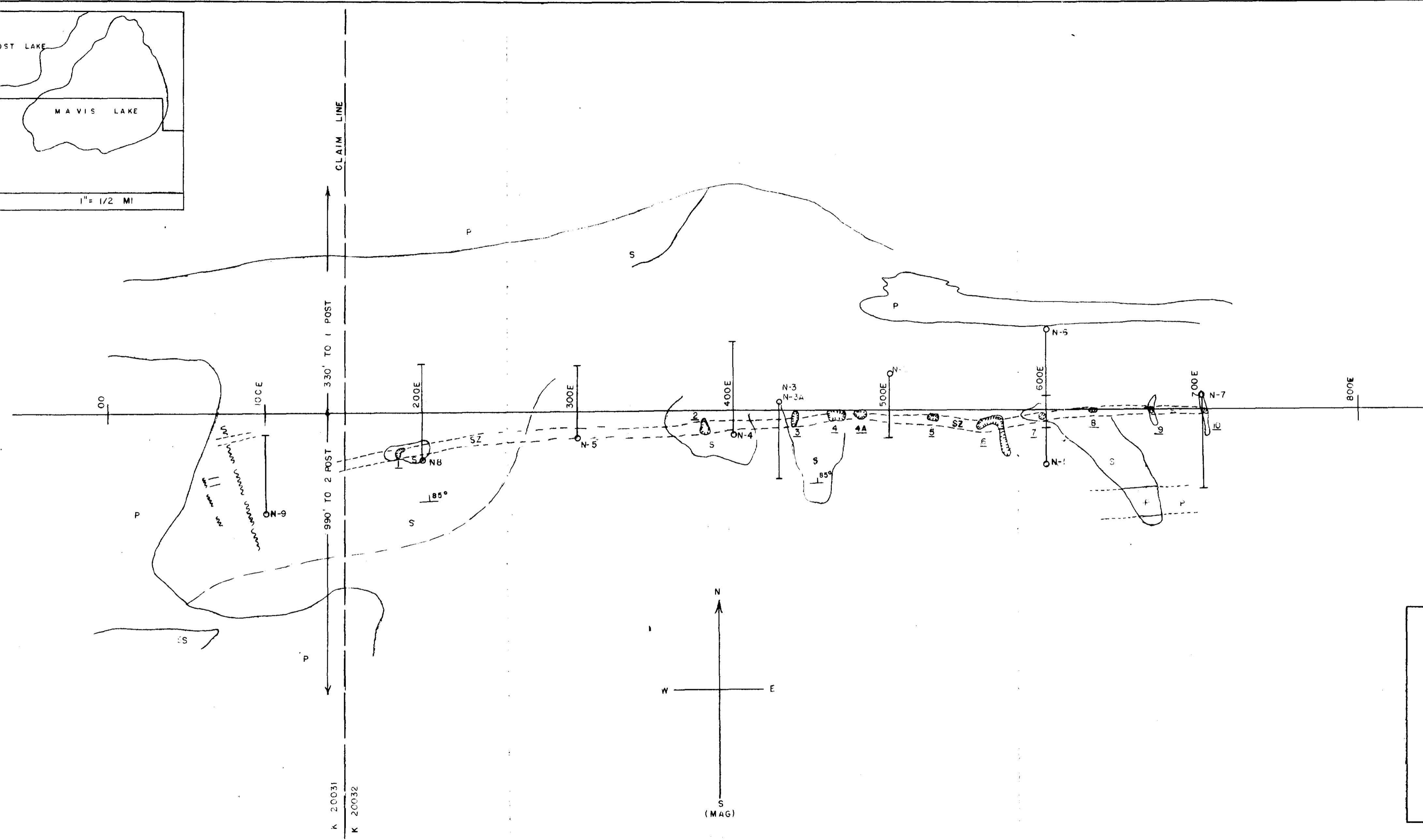
12% spod

(2% spod)
(1% spod)



ASSAY RESULTS

SAMPLE	PIT	HOLE	FROM	TO	FEET	% CU	% NI	AU	AG
248	I				4.0	0.69	0.11		
249	2				2.0	1.89	0.51		
250	3				4.0	1.14	0.16		
251	4				2.0	6.83	0.29		
252	4A				3.5	1.11	0.46		
253	5				4.0	0.88	0.38		
254	6				4.0	1.98	0.16		
255	7				4.5	1.88	0.31		
256	8				2.5	0.09	0.07		
257	8A				2.0	1.14	0.59		
258	9				2.0	0.07	0.02		
259	10				2.0	0.25	0.11		
299		H-3	20.0	24.0	4.0	0.10	0.04	H11	H11
300		H-3	24.0	30.5	6.5	0.28	0.26	H11	Tr
412		H-3	32.6	40.6	8.0	0.47	0.27		
401		H-3A	54.5	57.0	2.5	1.31	0.25		
413		H-4	19.2	20.5	1.3	0.93	0.27		
412		H-5	75.0	80.0	5.0	0.11	0.10		



LEGEND

- S BIOTITE SCHIST
- P PEGMATITE
- SZ SULPHIDE ZONE
- SCHISTOSITY
- FAULT
- DRILL HOLE

SCALE 1" = 40' 18 OCT 56

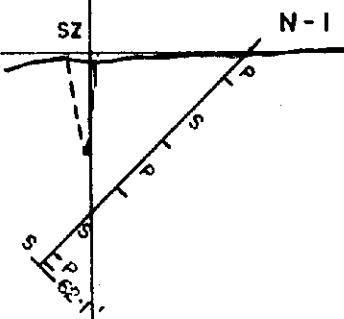
52F155E8305 16 ZEALAND
200

George H. Darling
GEORGE H. DARLING

BEARING SOUTH →

SECTION 600 E

10,000.00
SURFACE



9,900.00
100' LEVEL

B-L

9,800.00
200' LEVEL

9,700.00
300' LEVEL

9,600.00
400' LEVEL



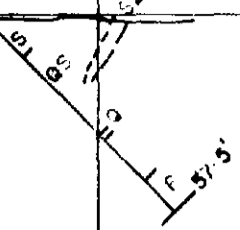
52F155E8305 16 ZEALAND

BEARING SOUTH →

SECTION 500E

10,000.00
SURFACE

N-2



9,900.00
100' LEVEL

B-L

9,800.00
200' LEVEL

9,700.00
300' LEVEL

9,600.00
400' LEVEL



52F155E8305 16 ZEALAND

220

1" = 40'

BEARING SOUTH →

SECTION 429 E

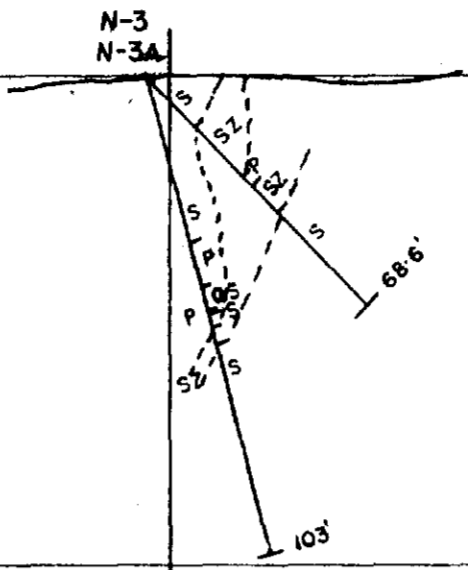
10,000.00
SURFACE

9,900.00
100' LEVEL

9,800.00
200' LEVEL

9,700.00
300' LEVEL

9,600.00
400' LEVEL



B.L.



52F15SE8305 16 ZEALAND

230

1" = 40'

BEARING SOUTH →

SECTION 400 E

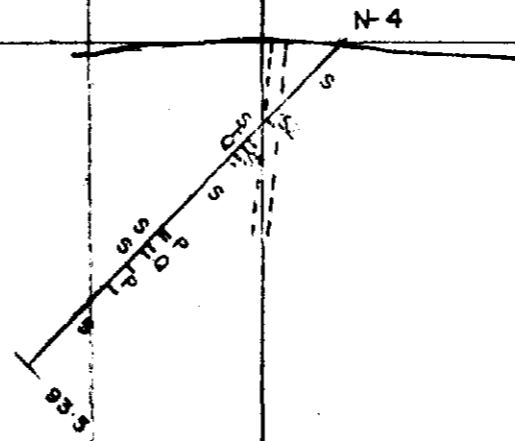
10,000.00
SURFACE

9,900.00
100' LEVEL

9,800.00
200' LEVEL

9,700.00
300' LEVEL

9,600.00
400' LEVEL

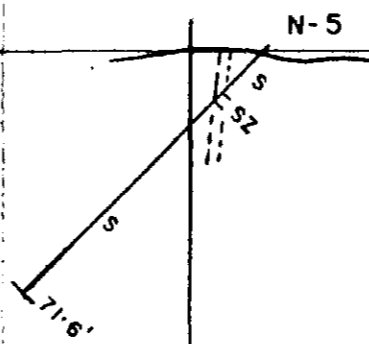


52F15SE8305 16 ZEALAND

BEARING SOUTH →

SECTION 300 E

10,000.00
SURFACE



9,900.00
100' LEVEL

9,800.00
200' LEVEL

9,700.00
300' LEVEL

9,600.00
400' LEVEL



52F155E8305 16 ZEALAND

250

1" = 40'

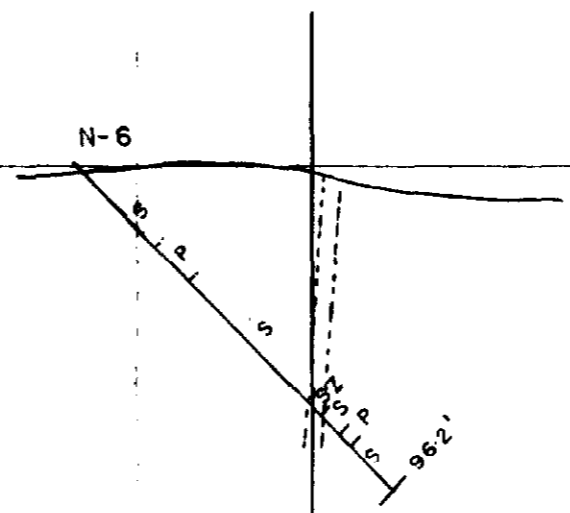
10,000.00
SURFACE

9,900.00
100' LEVEL

9,800.00
200' LEVEL

9,700.00
300' LEVEL

9,600.00
400' LEVEL



52F155E8305 16 ZEALAND

BEARING SOUTH →

SECTION 200E

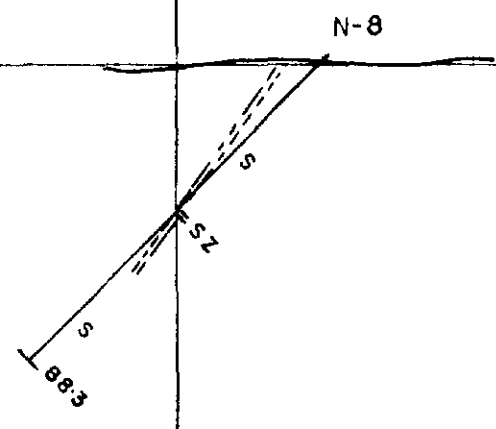
10,000.00
SURFACE

9,900.00
100' LEVEL

9,800.00
200' LEVEL

9,700.00
300' LEVEL

9,600.00
400' LEVEL



52F155E8305 16 ZEALAND

280

1" = 40'

BEARING SOUTH →

SECTION 100 E

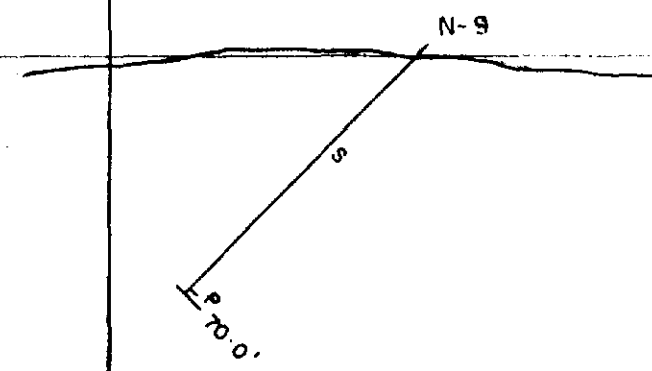
10,000.00
SURFACE

9,900.00
100' LEVEL

9,800.00
200' LEVEL

9,700.00
300' LEVEL

9,600.00
400' LEVEL



52F155E8305 16 ZEALAND

290

1" = 40'