



PROSPECTING AND SAMPLING REPORT
For Misfit Lake Claim Group

On May 1, 1998, a two-man prospecting traverse was performed by Dan Brown and Terry Darling. A total of five samples were taken. Descriptions are as follows:

- RT101: Quartz-carbonate veins.
RT102: Highly sheared volcanics with trace amounts of pyrite.
RT103: " " " " " " " "
RT104: " " " " " " " " & quartz.
RT105: " " " " " " " " & quartz.

Please find the traverse dated 01/05/98 on the accompanying map.

On May 2, 1998, a two-man prospecting traverse was performed by Dan Brown and Terry Darling. A total of four samples were taken. Descriptions are as follows:

- RT106: Six inch-wide quartz vein.
RT107: Mafic volcanics with quartz-eyes.
RT108: Quartz vein in mafic volcanics.
RT109: " " " " "



Please find the traverse dated 02/05/98 on the accompanying map.

2.20219

On May 4, 1998, a two-man prospecting traverse was performed by Dan Brown and Terry Darling. A total of four samples were taken. Descriptions are as follows:

- RT108: Quartz-feldspar-porphyry.
D103: Quartz veins in volcanics
D104: " " " "
D105: Volcanic tuff.

Please find the traverse dated 04/05/98 on the accompanying map.

Report, April 7, 2000
Page two

On May 5, 1998, a two-man prospecting traverse was performed by Dan Brown and Terry Darling. A total of nine samples were taken from a newly-found quartz-carbonate stockwork in contact with mafic volcanics. Descriptions are as follows:

RT109: Quartz carbonate veins.

RT110: Quartz carbonate veins.

RT111: " " "

RT112: " " "

S1,S2,S3,S4 &S5: All from same quartz carbonate stockwork zone.

Please find the traverse dated 05/05/98 on the accompanying map.

On May 7, 1998, a two-man prospecting traverse was performed by Dan Brown and Terry Darling. A total of five samples were taken. Descriptions are as follows:

RT113: Two inch quartz vein in mafic volcanics.

RT114: One inch quartz vein in mafic volcanics.

RT115: Felsic inclusions in meta-volcanics.

RT116: " " " " "

RT117: Quartz ladder veins.

Please find the traverse dated 07/05/98 on the accompanying map.

On May 8, 1998, a two-man prospecting traverse was performed by Dan Brown and Terry Darling. A total of five samples were taken. Descriptions are as follows:

D106: Quartz carbonate veins.

D107: " " "

D108: Highly sheared meta-seds with pyrite.

D109: " " " " " "

D110: Meta-seds with pyrite cubes.

Please find the traverse dated 08/05/98 on the accompanying map.

Report, April 7, 2000
Page three

On May 9, 1998, a half-day each was taken by Dan Brown and Terry Darling to physically strip a larger area from the original showing drilled by Batch River Mining. A total of two samples were taken, descriptions are as follows:

DSX: Quartz carbonate stockwork.
TSX: " " "

Please find the traverse dated 09/05/98 on the accompanying map.

On April 26, 1999, a two-man prospecting traverse was performed by Dan Brown and Terry Darling. A new quartz-feldspar-porphyry dyke was found and an area of two-hundred-square-feet was stripped revealing the contact between the host rock (meta-sediments) and the Q.F.P.-dyke. A total of four samples were taken. Descriptions are as follows:

99-1: Meta-sediments.
99-2: Chlorite/quartz vein in meta-seds
99-3: Meta-seds in contact with the Q.F.P.-dyke.
99-4: Quartz-feldspar veins in the Q.F.P.-dyke.

Please find the traverse dated 26/04/99 on the accompanying map.

On April 27, 1999, a two-man prospecting traverse was performed by Dan Brown and Terry Darling. A total of two samples were taken. Descriptions are as follows:

99-5: Highly magnetic volcanics.
99-6: " " "

Please find the traverse dated 27/04/99 on the accompanying map.

On April 28, 1999, a two-man prospecting traverse was performed by Dan Brown and Terry Darling. A total of three samples were taken. Descriptions are as follows:

99-7: Quartz vein in shear zone.
99-8: " " " " "
99-9: " " " " "

Please find the traverse dated 28/04/99 on the accompanying map.

Report, April 7, 2000
Page four

On April 29, 1999, a two-man prospecting traverse was performed by Dan Brown and Terry Darling. A new zone of Q.F.P. was discovered and an area of approximately 100-square-feet was stripped. A total of five samples were taken. Descriptions are as follows:

- 99-10: Shear zone, meta-volcanics.
- 99-11: Quartz, feldspar, porphyry.
- 99-12: Highly magnetic meta-volcanics near lower contact with Q.F.P.
- 99-13: Highly magnetic meta-sediments near upper contact with Q.F.P.
- 99-14: Highly magnetic meta-sediments near upper contact with Q.F.P.

Please find the traverse dated 29/04/99 on the accompanying map.

On April 30, 1999, more stripping was performed by Dan Brown and Terry Darling on the new zone of Q.F.P.

On May 1, 1999, stripping was continued and the upper contact of the Q.F.P.-dyke and the host rock (meta-sediments) was uncovered and three samples were taken. Descriptions are as follows:

- 99-15: Meta-sediments on contact.
- 99-16: Pyrite zone in meta-sediments by contact with Q.F.P.-dyke.
- 99-17: Two inch-wide quartz vein in Q.F.P.-dyke.

Please find the traverse dated 01/05/99 on the accompanying map.

On May 2, 1999, a two-man prospecting traverse via the roads was performed by Dan Brown and Terry Darling. A total of two samples were taken. Descriptions are as follows:

- 99-18: Quartz carbonate vein in meta-sediments, possible iron formation.
- 99-19: Chlorite and quartz veins in mafic volcanics.

Please find the traverse dated 02/05/99 on the accompanying map.

Report, April 7, 2000
Page five

On May 3, 1999, an old test pit along the shore of Minnitaki Lake was discovered and prospected by Dan Brown and Terry Darling. A total of three samples were taken. Descriptions are as follows:

- 99-20: Quartz carbonate vein with pyrite.
- 99-21: Highly foliated shear zone.
- 99-22: Muck pile of test pits, quartz carbonate veins in meta-volcanics.

Please find the traverse dated 03/05/99 on the accompanying map.

On May 4, 1999, a two-man prospecting traverse was performed by Dan Brown and Terry Darling via roads. A total of two samples were taken. Descriptions are as follows:

- 99-23: Quartz carbonate veins with large amounts of pyrite (approximately ten percent).
- 99-24: Quartz carbonate vein in sheared volcanics.

Please find the traverse dated 04/05/99 on the accompanying map.

On May 5, 1999, the easternmost outcropping of the Q.F.P.-dyke was further stripped by Dan Brown and Terry Darling. A total of two samples were taken. Descriptions are as follows:

- S-6: Quartz carbonate veins on lower contact of Q.F.P.-dyke.
- S-7: Quartz veins in Q.F.P.-dyke.

Please find the traverse dated 05/05/99 on the accompanying map.

On May 6, 1999, an area east of the original showing drilled by Batch River Mines, was stripped by Dan Brown and Terry Darling, and a new quartz carbonate vein with small amounts of pyrite was uncovered and found to be in contact with a volcanic tuff. One sample was taken of the quartz carbonate vein and labeled 99-5C.

Report, April 7, 2000
Page six

Please find enclosed/attached the certificates of analysis for all the above-mentioned samples.



Dan Brown

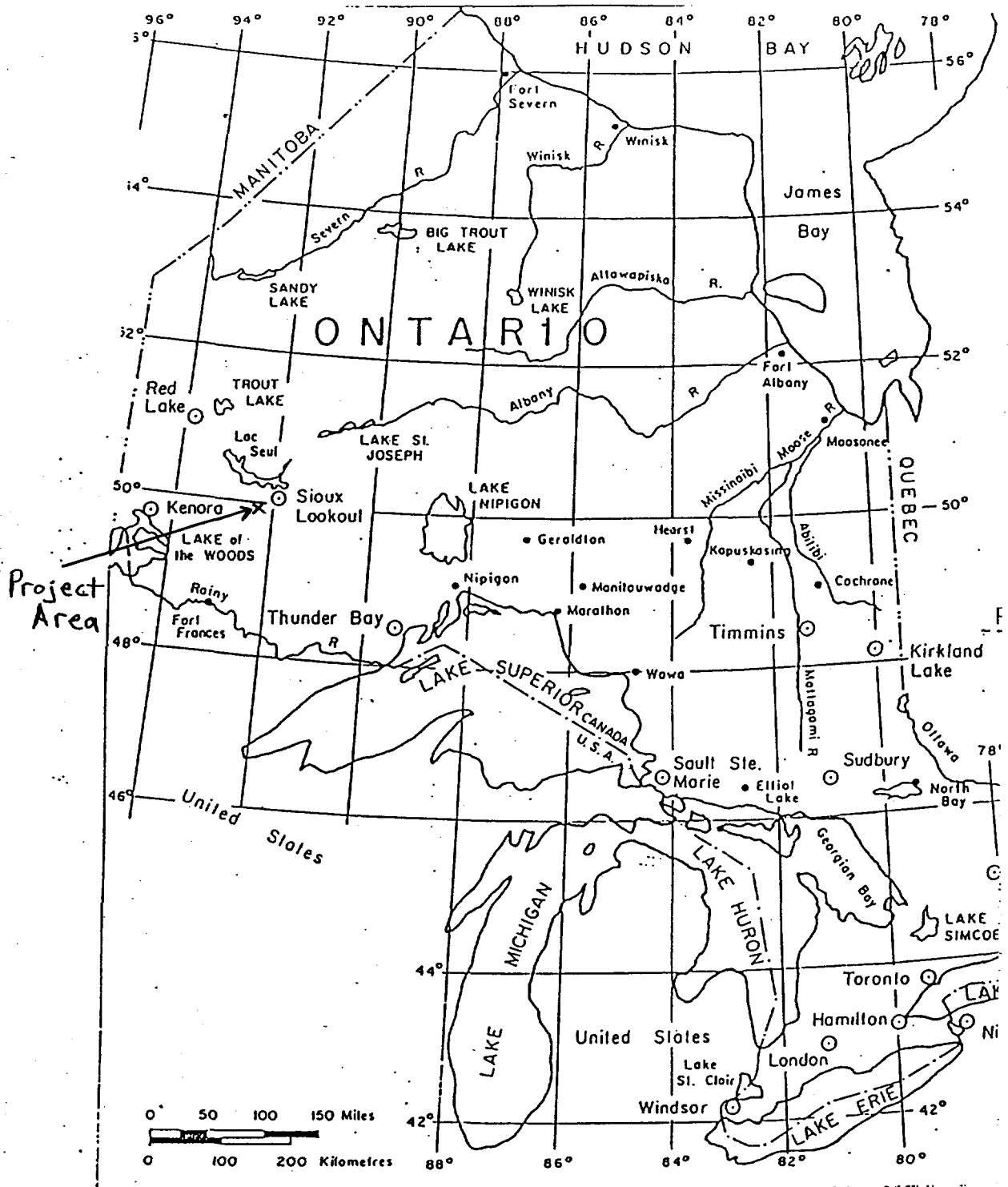
April 7, 2000



Terry Darling

April 7, 2000

KEY MAP



LAKEFIELD RESEARCH LIMITED

P.O. Box 4300, 185 Concession St., Lakefield, Ontario, KOL 2H0

Phone : 705-652-2038 - FAX : 705-652-6441

Terry Darling
27 Front Street
Campbellford, Ontario, KOL 1LO - CANADA

Fax :

Lakefield, February 19, 1999

Date Rec. : February 8, 1999

LR. Ref. : FEB9036.R99

Reference : N/A

Project : 9900345

CERTIFICATE OF ANALYSIS

No.	Sample ID	Au g/t
1	A-B ?	0.06
2	S4	0.04
3	S2	0.02
4	S5	0.03
5	S1	0.03
7	RT 115	< 0.02
8	RT 113	0.06
9	S3	0.08
10	RT 116	< 0.02
11	RT 114	0.02
12	RT 117	< 0.02
13	D 107	< 0.02
14	D 104	0.07
15	D 101	0.10
16	D 102	0.02
17	RT 102	< 0.02
18	RT 101	< 0.02
19	RT 104	< 0.02
20	RT 106	< 0.02
21	RT 103	0.03
22	RT 107	< 0.02
23	RT 105	0.04
24	TS X	0.02
25	DS X	0.02
27	RT 111	0.07
28	D 109	0.03
29	D 108	< 0.02
30	RT 112	< 0.02
31	D 110	0.03
32	RT 110	0.12
33	RT 109	0.07
34	RT 108	0.04
35	D31	< 0.02
36	D 105	< 0.02
37	D 103	< 0.02

LAKEFIELD RESEARCH LIMITED

P.O. Box 4300, 185 Concession St., Lakefield, Ontario, K0L 2H0

Phone : 705-652-2038 FAX : 705-652-6441

FEB9036.R99

No.	Sample ID	Au g/t
38	D 106	0.02
--	Check --	
39	RT 106	< 0.02



Roch Marion, B.Sc., C.Chem.
Assistant Manager, Analytical Services

A MEMBER OF IAETL CANADA

Accredited by the Standards Council of Canada in partnership with CAEAL to the ISO/IEC Guide 25 standard for specific registered tests.

The analytical results reported herein refer to the samples as received. Reproduction of this analytical report in full or in part is prohibited without prior written approval



XRAL Laboratories
A Division of SGS Canada Inc.

1885 Leslie Street
Don Mills, Ontario
Canada M3B 3J4
Telephone (416) 445-5755
Fax (416) 445-4152

CERTIFICATE OF ANALYSIS

Work Order: 058696

To: **Seymour Gold**
Attn: **Dan P. Brown**

Date : 03/03/00

P.O. Box 115
TRENT RIVER
ONTARIO/CANADA/K0L 2Z0

Copy 1 to : Terry A. Darling

Copy 2 to :

P.O. No. :
Project No. : MISFIT LAKE
No. of Samples : 28 Rock
Date Submitted : 21/02/00
Report Comprises : Cover Sheet plus
Pages 1 to 4

Distribution of unused material:

Pulps: Storage
Rejects: Storage

Certified By :

Dr. Hugh de Souza, General Manager
XRAL Laboratories

ISO 9002 REGISTERED

Report Footer: L.N.R. = Listed not received I.S. = Insufficient Sample
n.a. = Not applicable -- = No result
*INF = Composition of this sample makes detection impossible by this method
M after a result denotes ppb to ppm conversion, % denotes ppm to % conversion



XRAL Laboratories
A Division of SGS Canada Inc.

Work Order: 058696

Date: 03/03/00

FINAL

Page 1 of 4

Element. Method. Det.Lim. Units.	Au FA301 1 ppb	Be ICP70 0.5 ppm	Na ICP70 0.01 %	Mg ICP70 0.01 %	Al ICP70 0.01 %	P ICP70 0.01 %	K ICP70 0.01 %	Ca ICP70 0.01 %	Sc ICP70 0.5 ppm	Ti ICP70 0.01 %	V ICP70 2 ppm	Cr ICP70 1 ppm	Mn ICP70 2 ppm	Fe ICP70 0.01 %	Co ICP70 1 ppm	Ni ICP70 1 ppm
99-01	4	n.a.	n.a.	n.a.	n.a.	n.a.	n.a.	n.a.	n.a.	n.a.	n.a.	n.a.	n.a.	n.a.	n.a.	n.a.
99-02	2	n.a.	n.a.	n.a.	n.a.	n.a.	n.a.	n.a.	n.a.	n.a.	n.a.	n.a.	n.a.	n.a.	n.a.	n.a.
99-03	2	n.a.	n.a.	n.a.	n.a.	n.a.	n.a.	n.a.	n.a.	n.a.	n.a.	n.a.	n.a.	n.a.	n.a.	n.a.
99-04	2	n.a.	n.a.	n.a.	n.a.	n.a.	n.a.	n.a.	n.a.	n.a.	n.a.	n.a.	n.a.	n.a.	n.a.	n.a.
99-05	3	n.a.	n.a.	n.a.	n.a.	n.a.	n.a.	n.a.	n.a.	n.a.	n.a.	n.a.	n.a.	n.a.	n.a.	n.a.
99-06	2	n.a.	n.a.	n.a.	n.a.	n.a.	n.a.	n.a.	n.a.	n.a.	n.a.	n.a.	n.a.	n.a.	n.a.	n.a.
99-07	2	n.a.	n.a.	n.a.	n.a.	n.a.	n.a.	n.a.	n.a.	n.a.	n.a.	n.a.	n.a.	n.a.	n.a.	n.a.
99-08	3	n.a.	n.a.	n.a.	n.a.	n.a.	n.a.	n.a.	n.a.	n.a.	n.a.	n.a.	n.a.	n.a.	n.a.	n.a.
99-09	2	n.a.	n.a.	n.a.	n.a.	n.a.	n.a.	n.a.	n.a.	n.a.	n.a.	n.a.	n.a.	n.a.	n.a.	n.a.
99-10	16	n.a.	n.a.	n.a.	n.a.	n.a.	n.a.	n.a.	n.a.	n.a.	n.a.	n.a.	n.a.	n.a.	n.a.	n.a.
99-11	4	n.a.	n.a.	n.a.	n.a.	n.a.	n.a.	n.a.	n.a.	n.a.	n.a.	n.a.	n.a.	n.a.	n.a.	n.a.
99-12	4	n.a.	n.a.	n.a.	n.a.	n.a.	n.a.	n.a.	n.a.	n.a.	n.a.	n.a.	n.a.	n.a.	n.a.	n.a.
99-13	3	n.a.	n.a.	n.a.	n.a.	n.a.	n.a.	n.a.	n.a.	n.a.	n.a.	n.a.	n.a.	n.a.	n.a.	n.a.
99-14	2	n.a.	n.a.	n.a.	n.a.	n.a.	n.a.	n.a.	n.a.	n.a.	n.a.	n.a.	n.a.	n.a.	n.a.	n.a.
99-15	2	n.a.	n.a.	n.a.	n.a.	n.a.	n.a.	n.a.	n.a.	n.a.	n.a.	n.a.	n.a.	n.a.	n.a.	n.a.
99-16	11	n.a.	n.a.	n.a.	n.a.	n.a.	n.a.	n.a.	n.a.	n.a.	n.a.	n.a.	n.a.	n.a.	n.a.	n.a.
99-17	16	n.a.	n.a.	n.a.	n.a.	n.a.	n.a.	n.a.	n.a.	n.a.	n.a.	n.a.	n.a.	n.a.	n.a.	n.a.
99-18	4	n.a.	n.a.	n.a.	n.a.	n.a.	n.a.	n.a.	n.a.	n.a.	n.a.	n.a.	n.a.	n.a.	n.a.	n.a.
99-19	4	n.a.	n.a.	n.a.	n.a.	n.a.	n.a.	n.a.	n.a.	n.a.	n.a.	n.a.	n.a.	n.a.	n.a.	n.a.
99-20	4	n.a.	n.a.	n.a.	n.a.	n.a.	n.a.	n.a.	n.a.	n.a.	n.a.	n.a.	n.a.	n.a.	n.a.	n.a.
99-21	2	n.a.	n.a.	n.a.	n.a.	n.a.	n.a.	n.a.	n.a.	n.a.	n.a.	n.a.	n.a.	n.a.	n.a.	n.a.
99-22	3	n.a.	n.a.	n.a.	n.a.	n.a.	n.a.	n.a.	n.a.	n.a.	n.a.	n.a.	n.a.	n.a.	n.a.	n.a.
99-23	10	n.a.	n.a.	n.a.	n.a.	n.a.	n.a.	n.a.	n.a.	n.a.	n.a.	n.a.	n.a.	n.a.	n.a.	n.a.
99-24	4	n.a.	n.a.	n.a.	n.a.	n.a.	n.a.	n.a.	n.a.	n.a.	n.a.	n.a.	n.a.	n.a.	n.a.	n.a.
99-5C	3	<0.5	0.07	0.38	0.74	0.07	0.01	2.30	5.8	<0.01	27	80	1120	4.50	7	1
RT110	2	<0.5	0.03	2.70	0.19	0.02	0.02	14.6	3.5	<0.01	71	34	4120	11.0	30	29
S6	6	n.a.	n.a.	n.a.	n.a.	n.a.	n.a.	n.a.	n.a.	n.a.	n.a.	n.a.	n.a.	n.a.	n.a.	n.a.
S7	3	n.a.	n.a.	n.a.	n.a.	n.a.	n.a.	n.a.	n.a.	n.a.	n.a.	n.a.	n.a.	n.a.	n.a.	n.a.
*Dup 99-01	2	n.a.	n.a.	n.a.	n.a.	n.a.	n.a.	n.a.	n.a.	n.a.	n.a.	n.a.	n.a.	n.a.	n.a.	n.a.
*Dup 99-13	5	n.a.	n.a.	n.a.	n.a.	n.a.	n.a.	n.a.	n.a.	n.a.	n.a.	n.a.	n.a.	n.a.	n.a.	n.a.



XRAL Laboratories
A Division of SGS Canada Inc.

Work Order: 058696

Date: 03/03/00

FINAL

Page 2 of 4

Element.	Au	Be	Na	Mg	Al	P	K	Ca	Sc	Ti	V	Cr	Mn	Fe	Co	Ni
Method.	FA301	ICP70	ICP70	ICP70	ICP70	ICP70	ICP70	ICP70	ICP70	ICP70	ICP70	ICP70	ICP70	ICP70	ICP70	ICP70
Det.Lim.	1	0.5	0.01	0.01	0.01	0.01	0.01	0.01	0.5	0.01	2	1	2	0.01	1	1
Units.	ppb	ppm	%	%	%	%	%	%	ppm	%	ppm	ppm	ppm	%	ppm	ppm
*Dup 99-5C	2	<0.5	0.07	0.39	0.75	0.07	0.01	2.32	5.8	<0.01	27	76	1130	4.54	10	2



XRAL Laboratories
A Division of SGS Canada Inc.

Work Order: 058696

Date: 03/03/00

FINAL

Page 3 of 4

Element. Method. Det.Lim. Units.	Cu ICP70 0.5 ppm	Zn ICP70 0.5 ppm	As ICP70 3 ppm	Sr ICP70 0.5 ppm	Y ICP70 0.5 ppm	Zr ICP70 0.5 ppm	Mo ICP70 1 ppm	Ag ICP70 0.2 ppm	Cd ICP70 1 ppm	Sn ICP70 10 ppm	Sb ICP70 5 ppm	Ba ICP70 1 ppm	La ICP70 0.5 ppm	W ICP70 10 ppm	Pb ICP70 2 ppm	Bi ICP70 5 ppm
99-01	n.a.	n.a.	n.a.	n.a.	n.a.	n.a.	n.a.	n.a.	n.a.	n.a.	n.a.	n.a.	n.a.	n.a.	n.a.	n.a.
99-02	n.a.	n.a.	n.a.	n.a.	n.a.	n.a.	n.a.	n.a.	n.a.	n.a.	n.a.	n.a.	n.a.	n.a.	n.a.	n.a.
99-03	n.a.	n.a.	n.a.	n.a.	n.a.	n.a.	n.a.	n.a.	n.a.	n.a.	n.a.	n.a.	n.a.	n.a.	n.a.	n.a.
99-04	n.a.	n.a.	n.a.	n.a.	n.a.	n.a.	n.a.	n.a.	n.a.	n.a.	n.a.	n.a.	n.a.	n.a.	n.a.	n.a.
99-05	n.a.	n.a.	n.a.	n.a.	n.a.	n.a.	n.a.	n.a.	n.a.	n.a.	n.a.	n.a.	n.a.	n.a.	n.a.	n.a.
99-06	n.a.	n.a.	n.a.	n.a.	n.a.	n.a.	n.a.	n.a.	n.a.	n.a.	n.a.	n.a.	n.a.	n.a.	n.a.	n.a.
99-07	n.a.	n.a.	n.a.	n.a.	n.a.	n.a.	n.a.	n.a.	n.a.	n.a.	n.a.	n.a.	n.a.	n.a.	n.a.	n.a.
99-08	n.a.	n.a.	n.a.	n.a.	n.a.	n.a.	n.a.	n.a.	n.a.	n.a.	n.a.	n.a.	n.a.	n.a.	n.a.	n.a.
99-09	n.a.	n.a.	n.a.	n.a.	n.a.	n.a.	n.a.	n.a.	n.a.	n.a.	n.a.	n.a.	n.a.	n.a.	n.a.	n.a.
99-10	n.a.	n.a.	n.a.	n.a.	n.a.	n.a.	n.a.	n.a.	n.a.	n.a.	n.a.	n.a.	n.a.	n.a.	n.a.	n.a.
99-11	n.a.	n.a.	n.a.	n.a.	n.a.	n.a.	n.a.	n.a.	n.a.	n.a.	n.a.	n.a.	n.a.	n.a.	n.a.	n.a.
99-12	n.a.	n.a.	n.a.	n.a.	n.a.	n.a.	n.a.	n.a.	n.a.	n.a.	n.a.	n.a.	n.a.	n.a.	n.a.	n.a.
99-13	n.a.	n.a.	n.a.	n.a.	n.a.	n.a.	n.a.	n.a.	n.a.	n.a.	n.a.	n.a.	n.a.	n.a.	n.a.	n.a.
99-14	n.a.	n.a.	n.a.	n.a.	n.a.	n.a.	n.a.	n.a.	n.a.	n.a.	n.a.	n.a.	n.a.	n.a.	n.a.	n.a.
99-15	n.a.	n.a.	n.a.	n.a.	n.a.	n.a.	n.a.	n.a.	n.a.	n.a.	n.a.	n.a.	n.a.	n.a.	n.a.	n.a.
99-16	n.a.	n.a.	n.a.	n.a.	n.a.	n.a.	n.a.	n.a.	n.a.	n.a.	n.a.	n.a.	n.a.	n.a.	n.a.	n.a.
99-17	n.a.	n.a.	n.a.	n.a.	n.a.	n.a.	n.a.	n.a.	n.a.	n.a.	n.a.	n.a.	n.a.	n.a.	n.a.	n.a.
99-18	n.a.	n.a.	n.a.	n.a.	n.a.	n.a.	n.a.	n.a.	n.a.	n.a.	n.a.	n.a.	n.a.	n.a.	n.a.	n.a.
99-19	n.a.	n.a.	n.a.	n.a.	n.a.	n.a.	n.a.	n.a.	n.a.	n.a.	n.a.	n.a.	n.a.	n.a.	n.a.	n.a.
99-20	n.a.	n.a.	n.a.	n.a.	n.a.	n.a.	n.a.	n.a.	n.a.	n.a.	n.a.	n.a.	n.a.	n.a.	n.a.	n.a.
99-21	n.a.	n.a.	n.a.	n.a.	n.a.	n.a.	n.a.	n.a.	n.a.	n.a.	n.a.	n.a.	n.a.	n.a.	n.a.	n.a.
99-22	n.a.	n.a.	n.a.	n.a.	n.a.	n.a.	n.a.	n.a.	n.a.	n.a.	n.a.	n.a.	n.a.	n.a.	n.a.	n.a.
99-23	n.a.	n.a.	n.a.	n.a.	n.a.	n.a.	n.a.	n.a.	n.a.	n.a.	n.a.	n.a.	n.a.	n.a.	n.a.	n.a.
99-24	n.a.	n.a.	n.a.	n.a.	n.a.	n.a.	n.a.	n.a.	n.a.	n.a.	n.a.	n.a.	n.a.	n.a.	n.a.	n.a.
99-5C	25.9	57.3	<3	36.6	8.1	33.7	<1	0.8	1	<10	<5	11	21.1	<10	3	<5
RT110	16.8	180	<3	71.7	4.3	4.9	<1	0.6	4	<10	<5	9	10.3	<10	6	<5
S6	n.a.	n.a.	n.a.	n.a.	n.a.	n.a.	n.a.	n.a.	n.a.	n.a.	n.a.	n.a.	n.a.	n.a.	n.a.	n.a.
S7	n.a.	n.a.	n.a.	n.a.	n.a.	n.a.	n.a.	n.a.	n.a.	n.a.	n.a.	n.a.	n.a.	n.a.	n.a.	n.a.
*Dup 99-01	n.a.	n.a.	n.a.	n.a.	n.a.	n.a.	n.a.	n.a.	n.a.	n.a.	n.a.	n.a.	n.a.	n.a.	n.a.	n.a.
*Dup 99-13	n.a.	n.a.	n.a.	n.a.	n.a.	n.a.	n.a.	n.a.	n.a.	n.a.	n.a.	n.a.	n.a.	n.a.	n.a.	n.a.



XRAL Laboratories
A Division of SGS Canada Inc.

Work Order: 058696

Date: 03/03/00

FINAL

Page 4 of 4

Element.	Cu	Zn	As	Sr	Y	Zr	Mo	Ag	Cd	Sn	Sb	Ba	La	W	Pb	Bi
Method.	ICP70	ICP70	ICP70	ICP70	ICP70	ICP70	ICP70	ICP70	ICP70	ICP70	ICP70	ICP70	ICP70	ICP70	ICP70	ICP70
Det.Lim.	0.5	0.5	3	0.5	0.5	0.5	1	0.2	1	10	5	1	0.5	10	2	5
Units.	ppm	ppm	ppm	ppm	ppm	ppm	ppm	ppm	ppm	ppm	ppm	ppm	ppm	ppm	ppm	ppm
*Dup 99-5C	22.4	58.2	<3	37.0	8.1	32.3	<1	0.4	1	<10	<5	11	21.3	<10	2	<5



Ministry of
Northern Development
and Mines

Declaration of Assessment Work Performed on Mining Land

Mining Act, Subsection 65(2) and 66(3), R.S.O. 1990

Transaction Number (office use) <i>WCC 30 00028</i>
Assessment Files Research Imaging

P
h
C
9



52F16NE2005 2.20219 KABIK LAKE 900

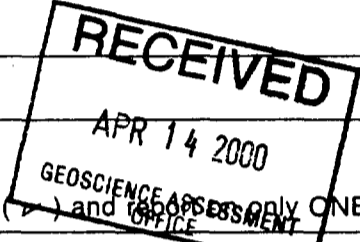
Instructions: - For work performed on Crown Lands before recording a claim, use form 0240.
- Please type or print in ink.

Subsections 65(2) and 66(3) of the Mining Act. Under section 8 of the Act, the assessment work and corresponding records with the mining land holder, recorder, Ministry of Northern Development and Mines, Ontario, must be filed in the Provincial Assessment Office - Sudbury.

RECEIVED	
0240.APR 14 2000	
A.M. 11:00	P.M.
7	8
9	10
11	12
1	2
3	4
5	6

1. Recorded holder(s) (Attach a list if necessary)

Name <i>Dan Brown</i>	Client Number <i>112565</i>
Address <i>PO Box 115 Trent River ON K0L2Z0</i>	Telephone Number <i>(705) 653-6009</i>
	Fax Number
Name	Client Number
Address	Telephone Number
	Fax Number



2. Type of work performed: Check (✓) and () and () only ONE of the following groups for this declaration.

Geotechnical: prospecting, surveys, assays and work under section 18 (regs) Physical: drilling, stripping, trenching and associated assays Rehabilitation

Work Type <i>Prospecting & Sampling</i>	Office Use
	Commodity
	Total \$ Value of Work Claimed <i>\$8,175</i>
Dates Work Performed From <i>01 05 98</i> To <i>06 05 99</i>	NTS Reference
Global Positioning System Data (if available)	Mining Division <i>Patricia</i>
Township/Area <i>Pickering Twp / Kabik Lake Area</i>	Resident Geologist District <i>Kenora</i>
M or G-Plan Number <i>G2079</i>	

Please remember to: - obtain a work permit from the Ministry of Natural Resources as required;
- provide proper notice to surface rights holders before starting work;
- complete and attach a Statement of Costs, form 0212;
- provide a map showing contiguous mining lands that are linked for assigning work;
- include two copies of your technical report.

3. Person or companies who prepared the technical report (Attach a list if necessary)

Name <i>Dan Brown</i>	Telephone Number <i>705 653 6009</i>
Address <i>PO Box 115 Trent River On</i>	Fax Number
Name <i>Terry Darling</i>	Telephone Number <i>705 653 0562</i>
Address <i>27 Fr St S Campbellford ON</i>	Fax Number
Name	Telephone Number
Address	Fax Number

4. Certification by Recorded Holder or Agent

I, *Dan Brown* (Print Name), do hereby certify that I have personal knowledge of the facts set forth in this Declaration of Assessment Work having caused the work to be performed or witnessed the same during or after its completion and, to the best of my knowledge, the annexed report is true.

Signature of Recorded Holder or Agent <i>[Signature]</i>	Date <i>April 11/2000</i>
Agent's Address <i>Same as above</i>	Telephone Number
	Fax Number

to be recorded and distributed. Work can only be assigned to claims that are contiguous (adjoining) to mining land where work was performed, at the time work was performed. A map showing the contiguous link accompany this form.

W0030.00078

Claim Number. Or if work was done on other eligible mining land, show in this column the location number indicated on the claim map.	Number of Claim Units. For other mining land, list hectares.	Value of work performed on this claim or other mining land.	Value of work applied to this claim.	Value of work assigned to other mining claims.	Bank. Value of work to be distributed at a future date.
eg TB 7827	16 ha	\$26,825	N/A	\$24,000	\$2,825
eg 1234567	12	0	\$24,000	0	0
eg 1234568	2	\$ 8,892	\$ 4,000	0	\$4,892
1 1077079	4	2692	1600	1092	0
2 1163158	2	525	800	0	0
3 1163155	4	2105	1600	505	0
4 1163156	6	786	2400	0	0
5 1163157	1	656	975	0	0
6 1163159	2	1411	800	611	0
7					
8					
9					
10					
11					
12					
13					
14					
15					
Column Totals		\$ 8175	\$ 8175	\$ 2208	0

RECEIVED
 APR 14 2000
 GEOSCIENCE ASSESSMENT
 OFFICE

I, Dan P. Brown (Print Full Name), do hereby certify that the above work credits are eligible under subsection 7 (1) of the Assessment Work Regulation 6/96 for assignment to contiguous claims or for application to the claim where the work was done.

Signature of Recorded Holder or Agent Authorized in Writing: [Signature] Date: April 11/2000

6. Instructions for cutting back credits that are not approved.

Some of the credits claimed in this declaration may be cut back. Please check (✓) in the boxes below to show how you wish to prioritize the deletion of credits:

- 1. Credits are to be cut back from the Bank first, followed by option 2 or 3 or 4 as indicated.
- 2. Credits are to be cut back starting with the claims listed last, working backwards; or
- 3. Credits are to be cut back equally over all claims listed in this declaration; or
- 4. Credits are to be cut back as prioritized on the attached appendix or as follows (describe):

Note: If you have not indicated how your credits are to be deleted, credits will be cut back from the Bank first, followed by option number 2 if necessary.

For Office Use Only

Received Stamp	Deemed Approved Date	Date Notification Sent
	Date Approved	Total Value of Credit Approved
Approved for Recording by Mining Recorder (Signature)		

All information collected on this form is obtained under the authority of subsection 6(1) of the Assessment Work Regulation O/S. Under section 6 of the Act, this information is a public record. This information will be used to review the assessment work and correspond with the owning land holder. For more information about this collection should be directed to a Personal Filing Recorder, Ministry of Northern Development and Mines, 3rd Floor, 323 Bannockburn Street, Sudbury, Ontario, P3E 0G2.

Work Type	Units of work Depending on the type of work, list the number of hours/days worked, metres of drilling, kilometres of drilling, number of samples, etc.	Cost Per Unit of work	Total Cost
Prospecting	35 days	\$150/day	\$5250
Sample Assay (Lakefield)	34 samples	\$18.74 ea	\$637
" " (SGS)	26 "	\$16.85 ea	\$438.00
" " (SGS)	2 "	\$25.58	\$51.00
Associated Costs (e.g. supplies, mobilization and demobilization).			
Flagging & Sample Bags			\$20
Concrete Saw Rental		\$40/day	\$40
" Blade depreciation		\$250/Blade	\$50
Transportation Costs			
3583.5 km		\$0.35/km	\$1254
Food and Lodging Costs			
Meals			\$435
Total Value of Assessment Work			\$8175

RECEIVED
 APR 14 2000
 GEOSCIENCE ASSESSMENT
 OFFICE - SUDBURY
RECEIVED
 APR 14 2000
 A.M. 11:00 mg P.M.

Calculations of Filing Discounts:

7	8	9	10	11	12	1	2	3	4	5	6
---	---	---	----	----	----	---	---	---	---	---	---

1. Work filed within two years of performance is claimed at 100% of the above Total Value of Assessment Work.
2. If work is filed after two years and up to five years after performance, it can only be claimed at 50% of the Total Value of Assessment Work. If this situation applies to your claims, use the calculation below:

TOTAL VALUE OF ASSESSMENT WORK $\times 0.50 =$ Total \$ value of worked claimed

Note:

- Work older than 5 years is not eligible for credit.
- A recorded holder may be required to verify expenditures claimed in this statement of costs within 45 days of a request for verification and/or correction/clarification. If verification and/or correction/clarification is not made, the Minister may reject all or part of the assessment work submitted.

Certification verifying costs:

I, Dan P. Brown, do hereby certify that the amounts shown are as accurate as may reasonably be determined and the costs were incurred while conducting assessment work on the lands indicated on the accompanying Declaration of Work form as recorded holder. I am authorized to make this certification.

Signature: [Signature] Date: April 11/2000

Address: _____ Fax Number: _____

4. Certification by Recorded Holder or Agent

I, Dan Brown, do hereby certify that I have personal knowledge of the facts set forth in this Declaration of Assessment Work having caused the work to be performed or witnessed the same during or after its completion and, to the best of my knowledge, the annexed report is true.

Signature of Recorded Holder or Agent: [Signature] Date: April 11/2000
 Agent's Address: Same as above Telephone Number: _____ Fax Number: _____

Geoscience Assessment Office
933 Ramsey Lake Road
6th Floor
Sudbury, Ontario
P3E 6B5

Telephone: (888) 415-9845
Fax: (877) 670-1555

August 31, 2000

DANIEL P BROWN
P.O. BOX 115
TRENT RIVER, Ontario
K0L-2Z0

Visit our website at:
www.gov.on.ca/MNDM/MINES/LANDS/mismnpgc.htm

Dear Sir or Madam:

Submission Number: 2.20219

Status

Subject: Transaction Number(s): W0030.00028 Approval After Notice

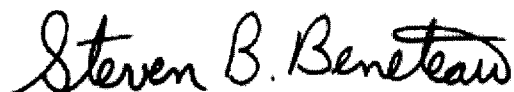
We have reviewed your Assessment Work submission with the above noted Transaction Number(s). The attached summary page(s) indicate the results of the review. **WE RECOMMEND YOU READ THIS SUMMARY FOR THE DETAILS PERTAINING TO YOUR ASSESSMENT WORK.**

If the status for a transaction is a 45 Day Notice, the summary will outline the reasons for the notice, and any steps you can take to remedy deficiencies. The 90-day deemed approval provision, subsection 6(7) of the Assessment Work Regulation, will no longer be in effect for assessment work which has received a 45 Day Notice. Allowable changes to your credit distribution can be made by contacting the Geoscience Assessment Office within this 45 Day period, otherwise assessment credit will be cut back and distributed as outlined in Section #6 of the Declaration of Assessment work form.

Please note any revisions must be submitted in **DUPLICATE** to the Geoscience Assessment Office, by the response date on the summary.

If you have any questions regarding this correspondence, please contact **JIM MCAULEY** by e-mail at james.mcauley@ndm.gov.on.ca or by telephone at (705) 670-5880.

Yours sincerely,



ORIGINAL SIGNED BY
Steve B. Beneteau
Acting Supervisor, Geoscience Assessment Office
Mining Lands Section

Work Report Assessment Results

Submission Number: 2.20219

Date Correspondence Sent: August 31, 2000

Assessor: JIM MCAULEY

Transaction Number	First Claim Number	Township(s) / Area(s)	Status	Approval Date
W0030.00028	1077079	KABIK LAKE & PICKEREL	Approval After Notice	August 20, 2000

Section:

9 Prospecting PROSP

The 45 days outlined in the Notice dated July 6, 2000 have passed and no new information regarding the work completed prior to the recording of claims has been received.

Assessment work credit has been approved as outlined on the attached Distribution of Assessment Work Credit sheet.

The assessment credit is being reduced by \$934. The TOTAL VALUE of assessment credit that will be allowed, based on the information provided in this submission, is \$7,241.

At the discretion of the Ministry, the assessment work performed on the mining lands noted in this work report may be subject to inspection and/or investigation at any time.

Correspondence to:

Resident Geologist
Kenora, ON

Recorded Holder(s) and/or Agent(s):

DANIEL P BROWN
TRENT RIVER, Ontario

Assessment Files Library
Sudbury, ON

TERRY ALAN DARLING
CAMPBELLFORD, ONTARIO

Distribution of Assessment Work Credit

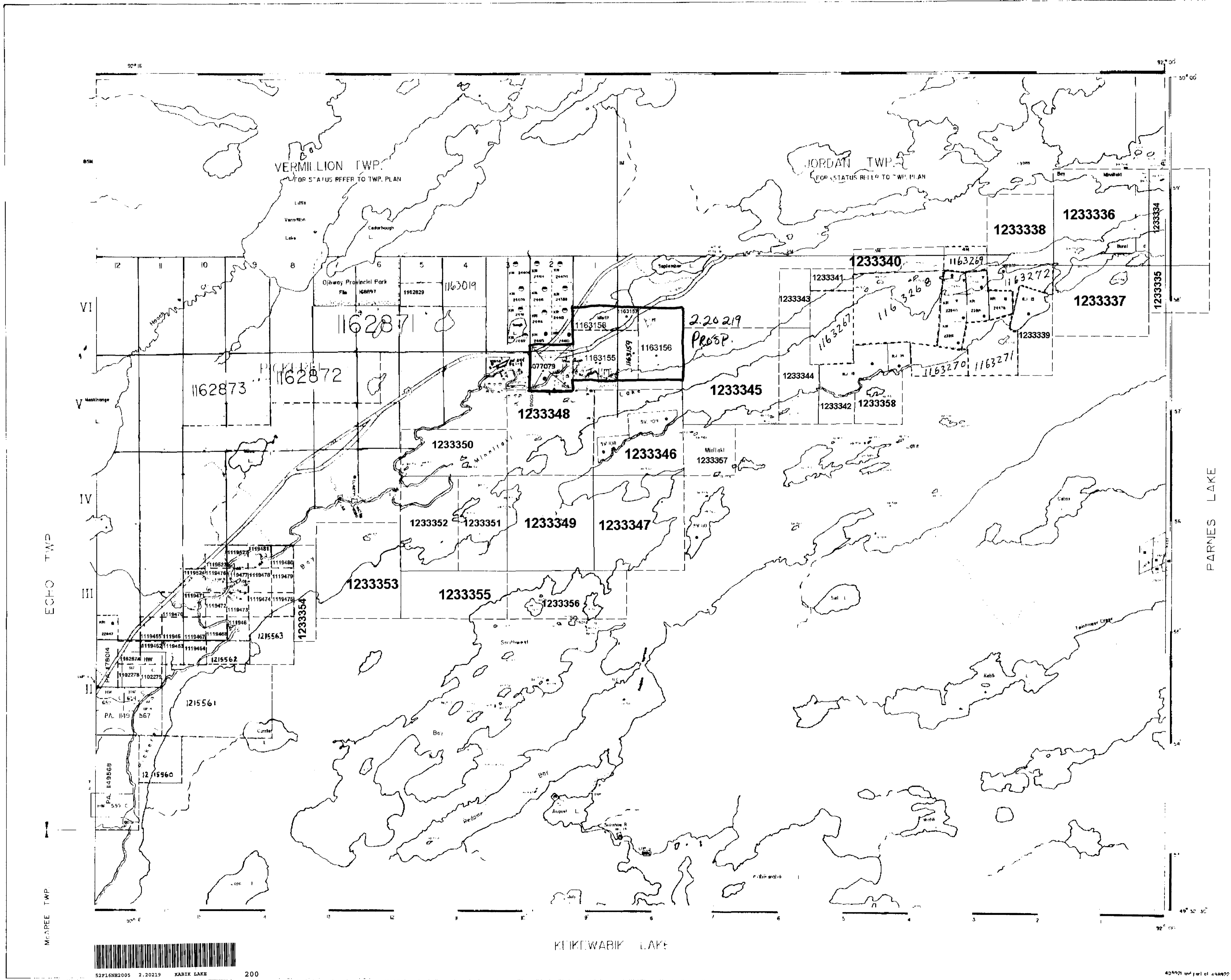
The following credit distribution reflects the value of assessment work performed on the mining land(s).

Date: August 31, 2000

Submission Number: 2.20219

Transaction Number: W0030.00028

<u>Claim Number</u>	<u>Value Of Work Performed</u>
1077079	2,225.00
1163158	58.00
1163155	2,105.00
1163156	786.00
1163157	656.00
1163159	1,411.00
Total: \$	7,241.00



LEGEND

HIGHWAY AND ROUTE No.

OTHER ROADS

TRAILS

SURVEYED LINES

TOWNSHIPS, BASE LINES, ETC.

LOTS, MINING CLAIMS, PARCELS, ETC.

UNSURVEYED LINES

LOT LINES

PARCEL BOUNDARY

MINING CLAIMS ETC.

RAILWAY AND RIGHT OF WAY

UTILITY LINES

NON-PERENNIAL STREAM

FLOODING OR FLOODING RIGHTS

SUBDIVISION OR COMPOSITE PLAN

RESERVATIONS

ORIGINAL SHORELINE

MARSH OR MUSKEG

MINES

TRAVERSE MONUMENT

DISPOSITION OF CROWN LANDS

TYPE OF DOCUMENT **SYMBOL**

PATENT SURFACE & MINING RIGHTS

 SURFACE RIGHTS ONLY

 MINING RIGHTS ONLY

LEASE SURFACE & MINING RIGHTS

 SURFACE RIGHTS ONLY

 MINING RIGHTS ONLY

LICENSE OF OCCUPATION

ORDER IN COUNCIL

RESERVATION

CANCELLED

SAND & GRAVEL

NOTE: MINING RIGHTS IN FORCE A PATENTED PROSPERITY TO MAY & MAY BE VESTED BY ORIGINAL PATENTEE BY THE MINING ACT, R.S.O. 1990 CHAP. 286, SEC. 10, SUBSECTION 1.

REFERENCES

AREAS WITHDRAWN FROM DISPOSITION

M.R.O. - MINING RIGHTS ONLY

S.R.O. - SURFACE RIGHTS ONLY

M.+S. - MINING AND SURFACE RIGHTS

Description	Order No.	Date	Quantity	File
M. W. 37/2	18	APR 1972	S.R.O.	101174
W. 37/2	90	MAY 1986	M.+S.	1000-1000
UP 1 WINDLASSING SITE	89	04 28		
UP 2 S&P PORT CAMP	84	04 28		
UP 3 DUMP	89	04 28		
UP 4 P&S 1 CANADA TARP	89	04 28		
UP 5 P&S 2 DUMP				

FOREST ACTIVITY INFORMATION

THIS TOWNSHIP AREA FALLS WITHIN THE

CROWN FOREST MGT. UNIT

AND MAY BE SUBJECT TO FORESTRY OPERATIONS.

THE M.N.R. UNIT FORESTER FOR THIS AREA CAN BE CONTACTED AT:

P.O. BOX 309
 800X LOOKOUT, ONTARIO P0V 2T0
 (807) 737-1140

SCALE - 1 IN. = 400 METERS

FEET 0 1000 2000 4000 6000 8000

METERS 0 1000 2000 4000 6000 8000

AREA KABIK LAKE AND PICKEREL TWP

M.N.R. ADMINISTRATIVE DISTRICT
 SIOUX LOOKOUT
 MINING DIVISION
 PATRICIA

LAND TITLES / REGISTRY DIVISION

KENORA (PATRICIA DIVISION)

Ministry of Natural Resources and Forestry

Date: 11/05/2019 Number: **G-2079**





Traverse & Sample Location Map

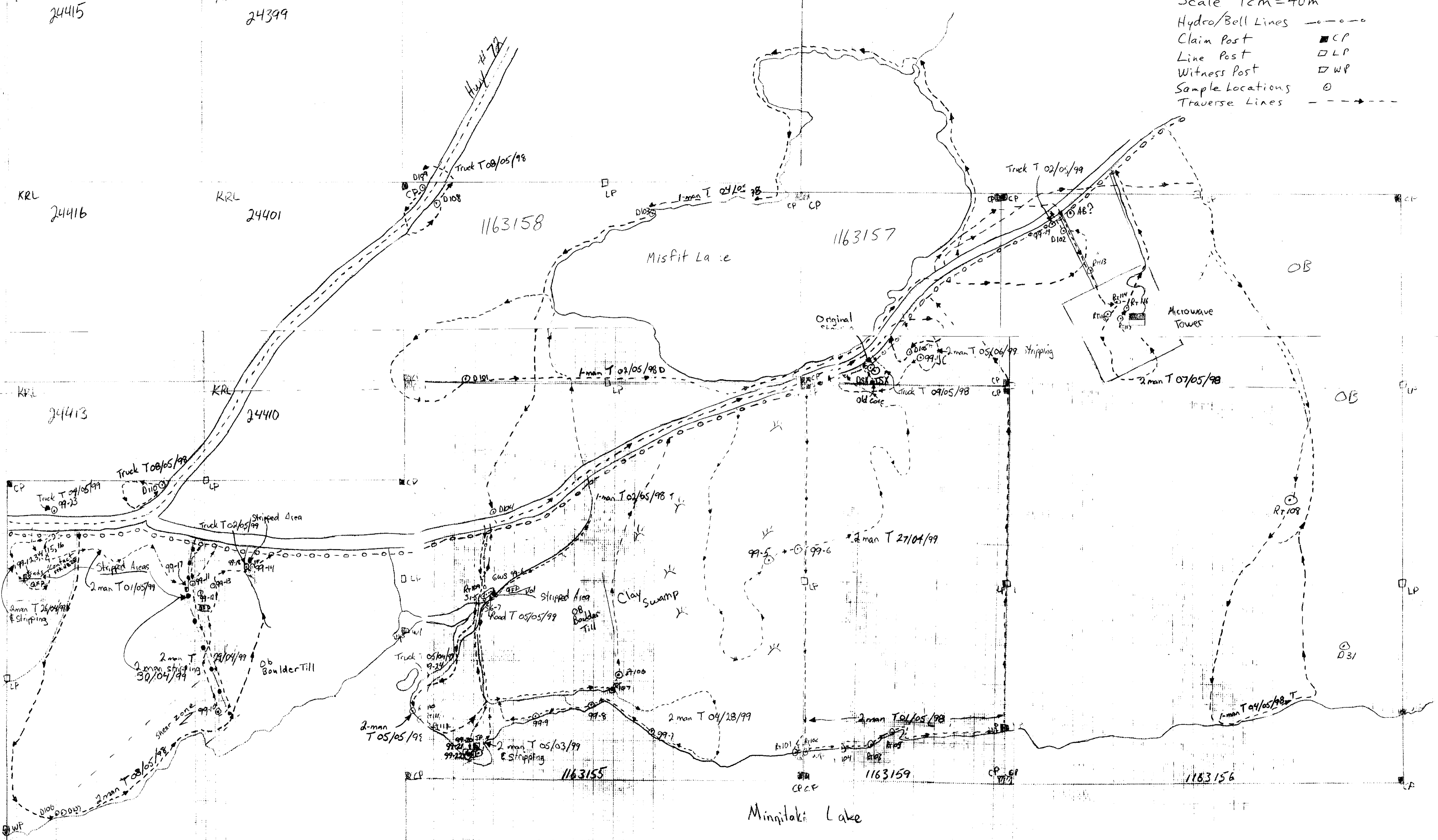
Kabik Lake AREA

KRL 24415 KRL 24399

KRL 24416 KRL 24401

KRL 24413 KRL 24410

Legend
 Scale 1cm=40m
 Hydro/Bell Lines - - - -
 Claim Post ■ CP
 Line Post □ LP
 Witness Post □ WP
 Sample Locations ○
 Traverse Lines - - - ->



(et al) as per 100)