



52F16NE8302 22 KABIK LAKE

010

KABIK LAKE AREA REPORT NO. 22

This file contains work performed by Dome Expl. Ltd. on claims:

Pa.246376	Hole # 30-1	370'	Aug/71
	# 30-2	403'	"
	# 30-4	401'	Aug-Sept/71
	# 30-5	390'	Sept/71
	# 30-9	447'	"
	# 30-10	471'	"
Pa.274833	Hole # 30-3	397'	Aug/71
Pa.262525	# 30-6	407'	Sept/71
	# 30-7	408'	"
Pa.274835	# 30-8	502'	"
Pa.270894	# 30-11	487'	"
Pa.270893	# 30-12	403'	Sept-Oct/71
Pa.270895	# 30-13	488'	Oct/71

TOTAL: 13DH 5579 FT.

Autopositives are enclosed.

AREA OF  
TOWNSHIP Kawik Lake REPORT # 22

This file contains work performed by Dom Expt. Ltd. on claim :

Pa 246376	-----	30-1	-----	Aug '71
		30-2	-----	" "
		30-4		Aug/Sep - 71
		30-5		Sept/71
		30-9		" "
		30-10		" "
Pa 274833	-----	30-3	-----	Aug/71
Pa 262525	-----	30-6	-----	Sept/71
		30-7	-----	" "
Pa 274835	-----	30-8	-----	" "
Pa 270894	-----	30-11		" "
Pa 270893	-----	30-12		Sept-Oct/71
Pa 270895	-----	30-13		Oct/71

Auto positives are enclosed.

DOME EXPLORATION (CANADA) LIMITED

LOCATION: Lin. 34W, 8 +20S, From Collar 570°N and 120°E to Post #1 - PA 246376		DIAMOND DRILL RECORD		MOLE NO 30-1	
AZIMUTH: 346 (T)		PROPERTY: McCombe Option, Project #30			
DIP: -45°	LENGTH: 370'	ELEVATION: 80' A.L.L. (Above CLAIM NO: PA 246376 lake level - low water)			
STARTED: August 20, 1971	CORE SIZE: AXT	DATE LOGGED: August 27, 1971 SECTION:			
COMPLETED: August 22, 1971	DIP TESTS: 42° at 300' (corrected)	LOGGED BY: L.B. Halladay			
PURPOSE: To test downward extension of surface showings					

FOOTAGE		DESCRIPTION	SAMPLE NO	FOOTAGE		LENGTH	Cu %	Au oz/ton	Ag oz/ton			
from	to			from	to							
0.0	10.5	OVERBURDEN: Clay										
10.5	17.3	PORPHYRY: bleached and silicified, quartz and carbonate veinlets, disseminated pyrite, specks chalcopryrite and magnetite.	4602	10.5	17.3	6.8	0.07	0.01	Trace			
17.3	75.9	QUARTZ-FELDSPAR	4603	17.3	27.3	10.0	0.08	Trace	Trace			
		PORPHYRY: fine-grained, blue-grey, occasional quartz and feldspar phenocrysts in fine-grained groundmass, locally slightly schistose and sericitic, numerous indistinct quartz and carbonate stringers.	4604	27.3	37.3	10.0	0.02	Trace	Trace			
		5% pyrite, disseminated and along fractures	4605	37.3	50.0	12.7	0.03	Trace	Trace			
		5% finely disseminated magnetite < 0.5% disseminated chalcopryrite.										
		50.0' - 61.6': 1.6' lost core	4606	50.0	61.6	11.6	0.03	Trace	Trace			
		61.6-69.7: medium-grained, phenocrysts more abundant.	4607	61.6	69.7	8.1	0.06	Trace	Trace			
		69.7-75.9: silicified, rusty carbonate.	4608	69.7	75.9	6.2	0.03	Trace	Trace			
75.9	94.2	QUARTZ-FELDSPAR PORPHYRY: medium-grained, grey, abundant quartz and feldspar phenocrysts in fine-grained matrix, consid-	4609	75.9	85.9	10.0	0.03	Trace	Trace			

## DIAMOND DRILL RECORD

HOLE NO. 30-1

PAGE NO. 2

FOOTAGE		DESCRIPTION	SAMPLE NO.	FOOTAGE		LENGTH	Cu %	Au oz/ton	Ag oz/ton			
from	to			from	to							
75.9	94.2	erable fine carbonate, occasional carbonate-chlorite fracture filling. 5% pyrite 2-3% magnetite as blebs and in fractures. < 0.5% disseminated chalcopyrite.	4610	85.9	94.2	8.3	0.03	Trace	Trace			
94.2	101.5	QUARTZ-FELDSPAR PORPHYRY: light grey, silicified, phenocrysts indistinct, fine carbonate also carbonate-chlorite filling fractures. 7% disseminated pyrite minor magnetite 0.5% fine disseminated chalcopyrite.  95.0 tourmaline crystals.	4611	94.2	101.5	7.3	0.04	Trace	Trace			
101.5	109.6	DIORITE DYKE: fine-to medium-grained, highly carbonated with considerable fine magnetite, a few specks of chalcopyrite and pyrite. Chilled contacts.										
109.6	151.6	QUARTZ-FELDSPAR PORPHYRY: medium-grained, light grey, abundant indistinct quartz and feldspar phenocrysts, considerable fine carbonate, occasional quartz veinlets, minor chlorite in fractures. 8-10% pyrite as blebs and in fractures 0.5% chalcopyrite as fine specks.	4612 4613 4614 4615	109.6 119.6 129.6 139.6	119.6 129.6 139.6 151.6	10.0 10.0 10.0 12.0	0.09 0.05 0.03 0.04	0.01 Trace Trace Trace	Trace Trace Trace Trace			
151.6	162.7	QUARTZ-FELDSPAR PORPHYRY: fine-to medium-grained, light grey-green, silicified, indistinct quartz and feldspar phenocrysts, slightly schistose at 45° to core axis, sericitic.	4616	151.6	162.7	11.1	0.07	Trace	Trace			

## DIAMOND DRILL RECORD

HOLE NO: 30-1

PAGE NO: 3

FOOTAGE		DESCRIPTION	SAMPLE NO	FOOTAGE		LENGTH	Cu %	Au oz/ton	Ag oz/ton	MoS <sub>2</sub> %		
from	to			from	to							
151.6	162.7	3% disseminated pyrite <0.5% chalcopyrite as specks and occasional blebs.										
162.7	178.2	QUARTZ-FELDSPAR PORPHYRY: fine-to medium- grained, dark grey-green, abundant indistinct quartz and feldspar pheno- crysts, slightly schistose, some pink feldspar alteration, minor carbonate, occasional chlorite-filled fractures. Minor disseminated magnetite. 2" intermediate dykelet with disseminated magnetite at upper contact. 3% pyrite, disseminated and in clusters. 1% chalcopyrite. " " " "	4617 4618	162.7 172.7	172.7 178.2	10.0 5.5	0.03 0.06	Trace Trace	Trace Trace			
178.2	272.6	QUARTZ-FELDSPAR PORPHYRY: fine-grained, light grey, indistinct quartz and feld- spar phenocrysts (latter occasionally absent) silicified, numerous irregular quartz stringers, some pink feldspar, minor carbonate, occasional blebs of very fine magnetite. Occasional chlor- ite-filled fractures in upper 10'. Phenocrysts gradually become more distinct, rock is fresher-looking. 229.5: weak sericite shear 3% disseminated pyrite and in fractures 0.6% disseminated chalcopyrite.  250.0 large blebs of chalcopyrite 250.0-272.0: phenocrysts become more indistinct rock slightly schistose, minor chlorite wisps,	4619 4620 4621 4622 4623 4624 4625 4626 4627	178.2 188.2 198.2 208.2 218.2 228.2 238.2 248.2 260.2	188.2 198.2 208.2 218.2 228.2 238.2 248.2 260.2 272.6	10.0 10.0 10.0 10.0 10.0 10.0 10.0 12.0 12.4	0.04 0.04 0.09 0.17 0.13 0.06 0.07 0.09 0.26	Trace Trace Trace Trace Trace Trace Trace Trace Trace	Trace Trace Trace Trace Trace Trace Trace Trace Trace	Nil		

4617  
 4618  
 4619  
 4620  
 4621  
 4622  
 4623  
 4624  
 4625  
 4626  
 4627



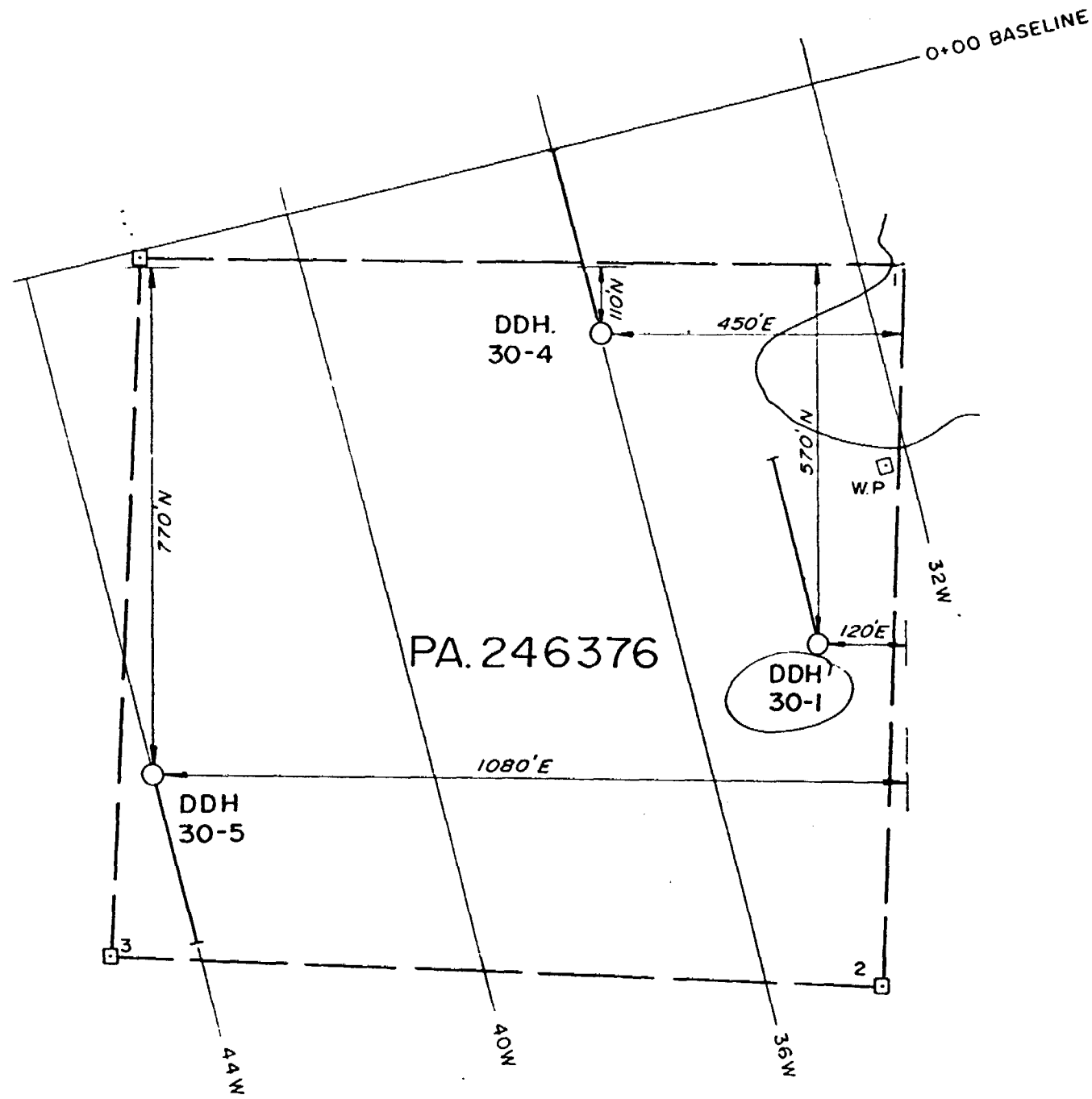
DIAMOND DRILL RECORD

HOLE NO: 30-1  
PAGE NO: 5

FOOTAGE		DESCRIPTION	SAMPLE NO	FOOTAGE		LENGTH	Cu %	Au oz/ton	Ag oz/ton	MoS <sub>2</sub> %		
from	to			from	to							
301.8	348.5	fractures and as small blebs. Occasional thin seams of molybdenite(?)										
348.5	370.0	QUARTZ-FELDSPAR PORPHYRY: fine-to medium-grained, dark blue-grey to purple, indistinct quartz and green feldspars in fine-grained matrix with pink feldspar alteration. Numerous carbonate veinlets at 70°-90° Abundant (10%) fine magnetite disseminated and along fractures at 20°-30° Very minor disseminated pyrite and chalcopyrite.	4636 4637	348.5 358.5	358.5 370.0	10.0 11.5	0.03 0.03	Tr Tr	Nil Nil			
	370.0	END OF HOLE										
		Casing left in hole. Core stored on claim PA 274834 No fluorescent or radioactive minerals noted. Drilling by Fathom Drilling Ltd., Box 3, Madsen, Ontario.										

*J. G. Halstead*

789707192  
 R.E.  
 PATRICIA  
 MINING DIV.



*L.B. Halladay*

DOME EXPLORATION (CANADA) LTD  
 PROJ 30 MINNITAKI LAKE AREA ONT.  
 LOCATION MAP  
 DDHS 30-1, 30-4, 30-5

SCALE	DATE	BY	NTS. No	DWG. No.
1" = 200'	DEC 71	A.M.	52-F-16	30-71-132

1" = 200'



LOCATION: Line 34W, 6 + 64S. From Collar 430'N and  
150'E to post #1 - PA 246376

DIAMOND DRILL RECORD

MOLE NO 30-2

AZIMUTH: 346°

PROPERTY: McCombe Option - Project 30

DIP: - 45°

LENGTH: 403'

ELEVATION: 82' A.L.L.

CLAIM NO: PA 246376

STARTED: August 23, 1971

CORE SIZE: AXT

DATE LOGGED: August 29, 1971 SECTION:

COMPLETED August 26, 1971

DIP TESTS: 40° at 400' (corrected)

LOGGED BY: L.B. Halladay

PURPOSE: To test downward extension of surface showings.

FOOTAGE		DESCRIPTION	SAMPLE NO	FOOTAGE		LENGTH	Cu %	Au oz/ton	Ag oz/ton	MoS <sub>2</sub> %		
from	to			from	to							
0.0	12.0	OVERBURDEN: Clay										
12.0	19.8	QUARTZ-FELDSPAR PORPHYRY: medium-grained, light grey, distinct quartz and indistinct feldspar phenocrysts, in fine-grained matrix, minor mafic wisps, considerable rusty carbonate as flecks and stringers. Occasional quartz veinlets.  5% pyrite, disseminated and as stringers and blebs. 1% chalcopyrite as fine specks and occasionally in fractures.	4638	12.0	19.8	7.8	0.20	0.01	Tr			
19.8	31.9	DIORITE DYKE: fine-grained, green, with considerable disseminated magnetite, specks pyrite, chilled borders.  27.5' - 30.3': porphyry inclusion.										
31.9	58.0	QUARTZ-FELDSPAR PORPHYRY: medium-grained, grey, indistinct quartz phenocrysts, white and occasional green feldspars, some chlorite and sericite as wisps.	4639 4640	31.9 44.9	44.9 58.0	13.0 13.1	0.08 0.13	Tr Tr	Nil Tr			

## DIAMOND DRILL RECORD

HOLE NO: 30-2

PAGE NO: 2

FOOTAGE		DESCRIPTION	SAMPLE NO	FOOTAGE		LENGTH	Cu %	Au oz/ton	Ag oz/ton	MoS <sub>2</sub> %		
from	to			from	to							
31.9	58.0	and in fractures. Minor magnetite. Most fractures at 20 - 45° to core axis.										
		6% pyrite, disseminated and in fractures										
		1% chalcopryite, disseminated and in fractures.										
58.0	73.8	QUARTZ-FELDSPAR PORPHYRY: fine-grained, light grey, occasional indistinct quartz and feldspar phenocrysts in fine-grained matrix. Occasional fine carbonate stringers.	4641	58.0	65.0	7.0	0.24	Tr	Tr			
			4642	65.0	73.8	8.8	0.15	0.01	Tr			
		67.5': 3" intermediate dykelet										
		4-5% : disseminated pyrite										
		1% : disseminated chalcopryite.										
73.8	106.0	QUARTZ-FELDSPAR PORPHYRY: fine to medium grained, grey-green, indistinct quartz white and occasional green feldspar phenocrysts with chlorite and sericite as wisps and in fractures. Minor pink feldspar, some fine carbonate.	4643	73.8	83.8	10.0	0.18	Tr	Tr			
			4644	83.8	93.8	10.0	0.17	Tr	Tr			
			4645	93.8	106.0	12.2	0.24	0.01	Tr			
		5% pyrite										
		1-1/2% chalcopryite, finely disseminated and occasionally in fractures.										
106.0	118.4	QUARTZ-FELDSPAR PORPHYRY: purple to grey indistinct quartz, white and occasionally green feldspar phenocrysts, wisps of sericite, occasional carbonate and quartz stringers, considerable fine	4646	106.0	118.4	12.4	0.06	Tr	Tr	Nil		



## DIAMOND DRILL RECORD

HOLE NO: 30-2

PAGE NO: 4

FOOTAGE		DESCRIPTION	SAMPLE NO	FOOTAGE		LENGTH	Cu %	Au oz/ton	Ag oz/ton	MoS <sub>2</sub> %		
from	to			from	to							
167.9	178.7	fractures. 0.5% chalcopyrite, disseminated and in fractures.										
178.7	235.0	QUARTZ PORPHYRY: fine-grained, grey, phenocrysts sparse, occasional distinct quartz, and indistinct feldspar, some sericite alteration, minor carbonate, wisps and fracture fillings of chlorite in first 10.0'. Numerous quartz veinlets or silicified sections.	4654	178.7	188.7	10.0	0.34	0.01	Tr			
			4655	188.7	198.7	10.0	0.19	0.01	Tr			
			4656	198.7	208.7	10.0	0.12	Tr	Nil			
			4657	208.7	218.7	10.0	0.04	Tr	Nil			
			4658	218.7	226.7	8.0	0.04	Tr	Nil			
			4659	226.7	235.0	8.3	0.09					
		3-4% disseminated pyrite also in fractures. <0.5% disseminated chalcopyrite.										
235.0	261.5	QUARTZ-FELDSPAR PORPHYRY: fine to medium grained, purple-pink, quartz phenocrysts and varying amounts indistinct feldspars in fine-grained matrix, considerable fine carbonate.	4660	235.0	245.0	10.0	0.08					
			4661	245.0	255.0	10.0	0.07					
			4662	255.0	261.5	6.5	0.09					
		5% finely disseminated magnetite. 3-4% finely disseminated pyrite. 0.6% finely disseminated chalcopyrite.										
261.5	307.0	QUARTZ-FELDSPAR PORPHYRY: fine to medium-grained, grey-green to pinkish, abundant quartz and feldspar phenocrysts in fine-grained, locally sericitic and schistose matrix, wisps of chlorite, considerable fine carbonate and occasional stringers. Occasional zones similar to 235.0' -	4663	261.5	271.5	10.0	0.14					
			4664	271.5	281.5	10.0	0.10					
			4665	281.5	291.5	10.0	0.14					
			4666	291.5	301.5	10.0	0.14					
			4667	301.5	307.0	5.5	0.10					

DIAMOND DRILL RECORD

HOLE NO: 30-2  
PAGE NO: 5

FOOTAGE		DESCRIPTION	SAMPLE NO	FOOTAGE		LENGTH	Cu %	Au oz/ton	Ag oz/ton	MoS <sub>2</sub>
from	to			from	to					
261.5	307.0	261.0'. 3-4% disseminated pyrite, occasional stringers. 0.5% disseminated chalcopyrite.								
307.0	346.1	QUARTZ-FELDSPAR PORPHYRY: fine-grained, pinkish, quartz and feldspar phenocrysts in fine-grained, pink (feldspar) matrix, slightly schistose, sericitic, considerable fine carbonate. 3-4% disseminated pyrite < 0.5% disseminated chalcopyrite.	4668 4669 4670 4671	307.0 317.0 327.0 337.0	317.0 327.0 337.0 346.1	10.0 10.0 10.0 9.1	0.19 0.10 0.04 0.13			
346.1	379.2	QUARTZ PORPHYRY: fine-grained, white, quartz phenocrysts occasionally absent, feldspar phenocrysts occasionally present in fine-grained matrix, silicified, slightly schistose and sericitic. Some chlorite in upper 4.0', numerous quartz veinlets with minor magnetite, possibly some molybdenite. 364.5': Minor galena 2-3% disseminated pyrite < 0.5% disseminated chalcopyrite.	4672 4673 4674	346.1 356.1 368.1	356.1 368.1 379.2	10.0 12.0 11.1	0.09 0.07 0.03		Trace Nil Nil	
379.2	403.0	QUARTZ-FELDSPAR PORPHYRY: fine to medium-grained, grey to blue-grey, with abundant quartz phenocrysts (some large, up to 3/8") in fine-grained matrix, considerable carbonate partially leached, some chlorite wisps, some fine magnetite.	4675 4676	379.2 391.2	391.2 403.0	12.0 11.8	0.09 0.07			

DIAMOND DRILL RECORD

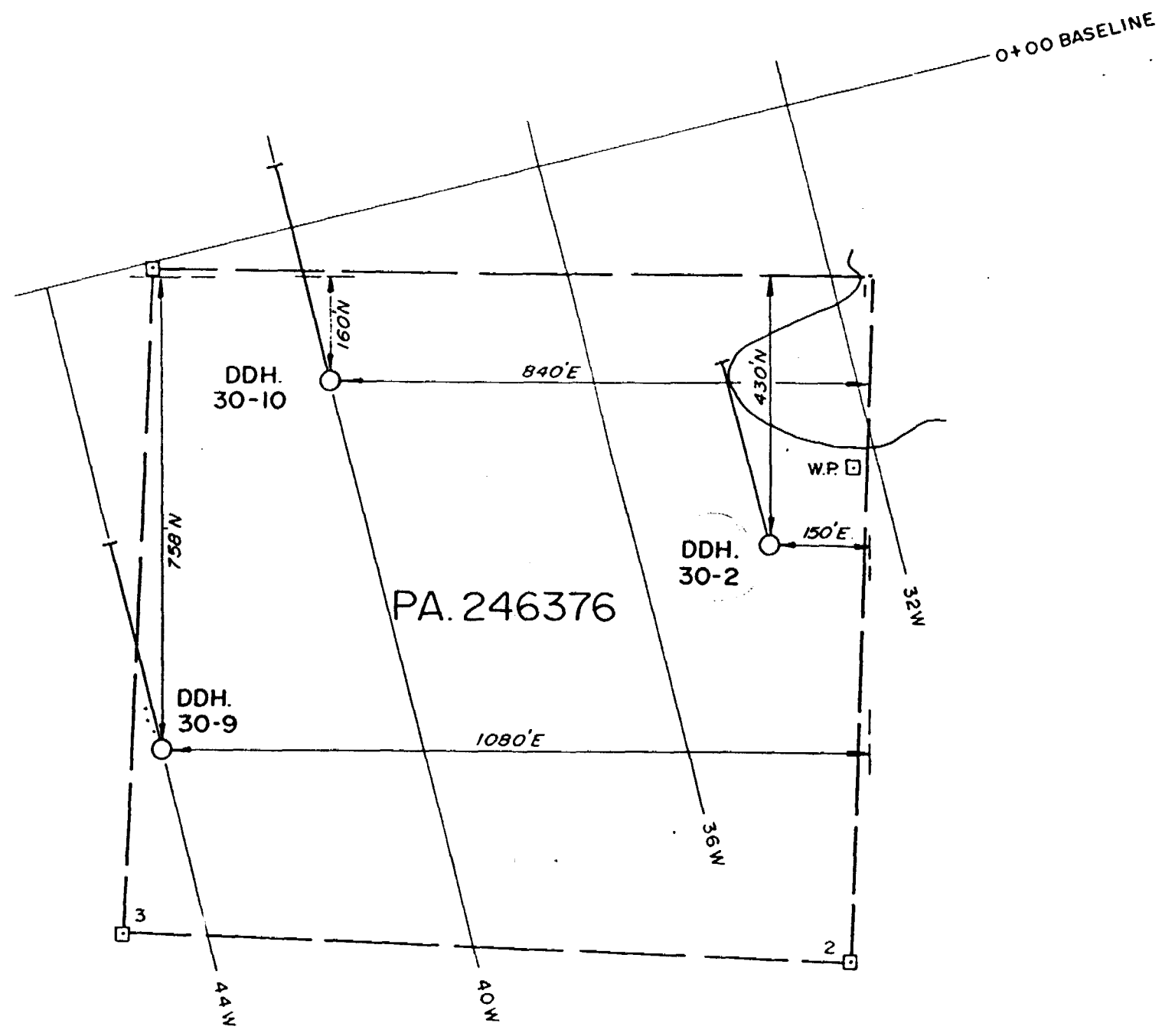
HOLE NO: 30-2

PAGE NO: 6

FOOTAGE		DESCRIPTION	SAMPLE NO	FOOTAGE		LENGTH							
from	to			from	to								
379.2	403.0	2-3% disseminated pyrite < 0.5% disseminated chalcopyrite											
	403.0	END OF HOLE											
		Core stored in trays on claim PA-274834.											
		No fluorescent or radioactive minerals were noted.											
		Drilling by Fathom Drilling Limited, Box 3, Madsen, Ontario.											

*J. S. [Signature]*

28  
 PATRICIA  
 MINING DIV.  
 R.D.



1" = 200'

*L.B. Halliday*

DOME EXPLORATION (CANADA) LTD				
PROJ 30 MINNITAKI LAKE AREA ONT				
LOCATION MAP				
DDHs. 30-2, 30-9, 30-10				
SCALE	DATE	BY	NTS. No	DWG. No
1" = 200'	DEC. 71	A M	52-F-16	30-71-131





## DIAMOND DRILL RECORD

HOLE NO:

30-3

PAGE NO:

2

FOOTAGE		DESCRIPTION	SAMPLE NO	FOOTAGE		LENGTH	% Cu	% MoS <sub>2</sub>					
from	to			from	to								
168.0	230.6	168.0' - 184.0': minor disseminated pyrite and chalcopyrite											
		184.0' - 221.2': 2% disseminated pyrite	4683	184.0	194.0	10.0	0.09	Nil					
		< 0.5% chalcopyrite as fine specks and occasionally as large blebs	4684	194.0	204.0	10.0	0.09	Nil					
		Occasional fine specks molybdenite or magnetite	4685	204.0	214.0	10.0	0.09						
			4686	214.0	221.2	7.2	0.05						
		221.2' - 230.6': more silicified, 1% chalcopyrite as specks, blebs and occasionally filling fractures nearly parallel to core. Occasional fine blue metallic specks (MoS <sub>2</sub> ?)	4687	221.2	230.6	9.4	0.35	0.01					
230.6	247.2	QUARTZ-FELDSPAR PORPHYRY: greygreen to pink, with indistinct quartz, white and green feldspar phenocrysts in fine-grained pinkish matrix (possible feldspar alteration), considerable fine carbonate and occasionally stringers. Some short sections similar to 168.0'	4688	230.6	238.6	8.0	0.27						
		230.0' Minor disseminated magnetite. Carbonate locally leached.	4689	238.6	247.2	7.6	0.07						
		2-4% disseminated pyrite											
		0.6% disseminated chalcopyrite with veinlets in lighter-coloured rock.											
247.2	265.8	QUARTZ-FELDSPAR PORPHYRY: fine to medium grained, light grey, distinct phenocrysts of quartz and feldspar, slightly schistose and sericitic near upper contact, considerable fine carbonate.	4690	247.2	257.2	10.0	0.12						
			4691	257.2	265.8	8.6	0.09						

## DIAMOND DRILL RECORD

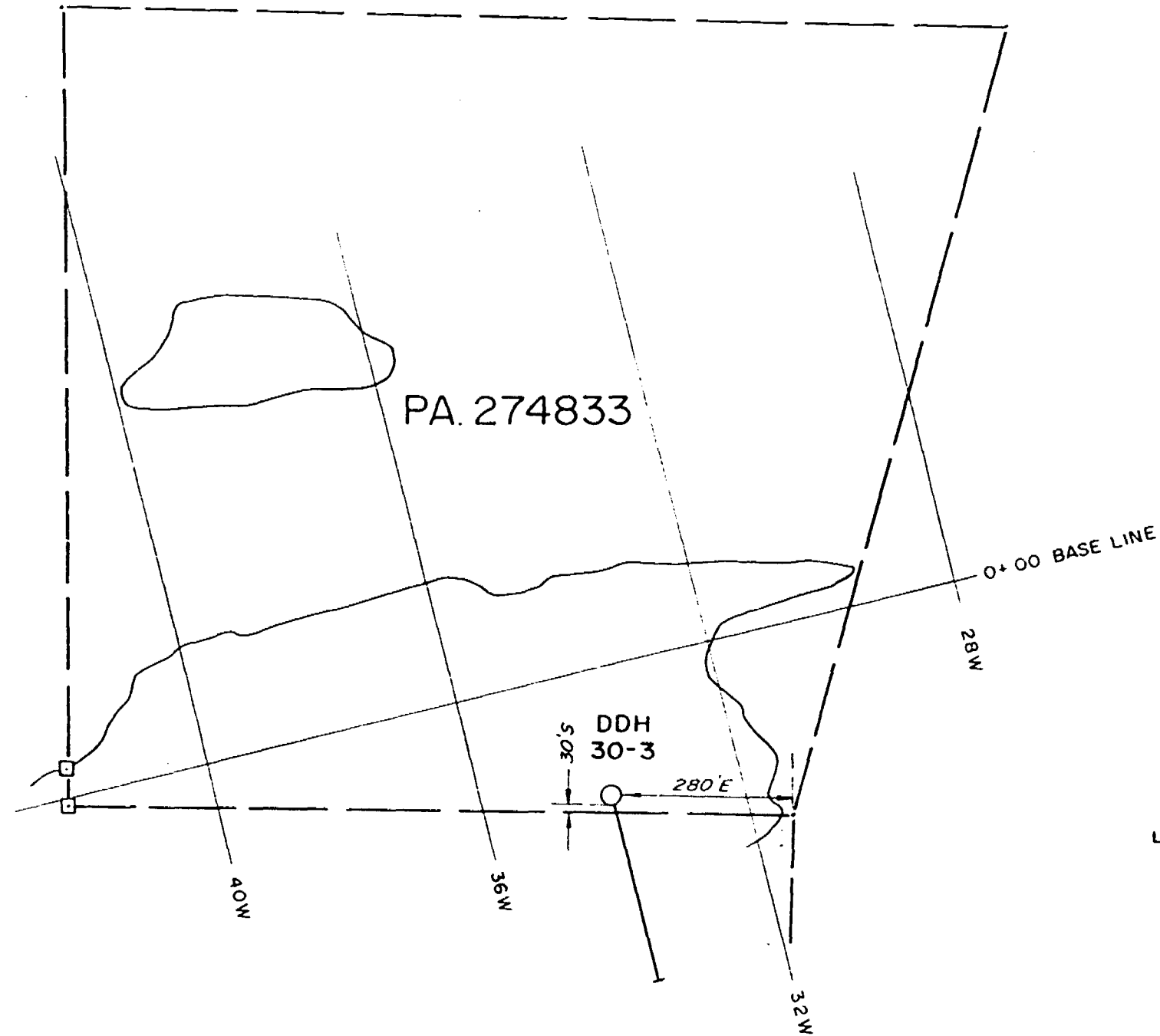
HOLE NO: 30-3

PAGE NO: 3

FOOTAGE		DESCRIPTION	SAMPLE NO	FOOTAGE		LENGTH	% Cu	% MoS <sub>2</sub>				
from	to			from	to							
247.2	265.8	Occasional specks blue metallic mineral.										
		2-4% disseminated pyrite 0.6% disseminated chalcopyrite.										
265.8	310.8	QUARTZ-FELDSPAR PORPHYRY: medium-grained, pink with distinct quartz and white feldspar phenocrysts and occasional green feldspars in fine-grained, pink matrix, some fine carbonate and occasionally as stringers.	4692	265.8	275.8	10.0	0.08					
			4693	275.8	285.8	10.0	0.08					
			4694	285.8	295.8	10.0	0.22					
			4695	295.8	310.8	15.0	0.16					
		4% disseminated pyrite, also in chloritic fractures 0.6% disseminated chalcopyrite also in chloritic fractures nearly parallel to core.										
310.8	367.3	QUARTZ-FELDSPAR PORPHYRY: grey-green, distinct quartz phenocrysts, indistinct feldspars in fine-grained matrix locally pink, considerable fine carbonate also in fractures locally leached. Core badly broken.	4696	310.8	321.8	10.0	0.14					
			4697	321.8	332.4	10.6	0.06					
			4698	332.4	340.0	7.6	0.08					
			4699	340.0	350.0	10.0	0.05					
		2% disseminated pyrite, also in fractures 310.0' - 350.0': 0.5% disseminated chalcopyrite, also in fractures 350.0' - 367.0': 0.9% chalcopyrite disseminated and in fractures.										
			4700	350.0	359.0	9.0	0.22					
			4046	359.0	367.3	8.3	0.14					



PATRICIA  
 MINING DIV.  
 1981



1"=200'

*L. B. Helladay*

DOME EXPLORATION (CANADA) LTD				
PROJ 30 MINNITAKI LAKE AREA ONT.				
LOCATION MAP				
DDH 30-3				
SCALE	DATE	BY	INTS No	DWG No
1"=200'	DEC 71	A M	52-F-16	30-71-133



## DIAMOND DRILL RECORD

HOLE NO: 30-4

PAGE NO: 2

FOOTAGE		DESCRIPTION	SAMPLE NO	FOOTAGE		LENGTH	% Cu	% MoS <sub>2</sub>			
from	to			from	to						
11.3	81.6	lets or silicified zones some with flakes of molybdenite.									
		2-4% disseminated pyrite < 0.5% disseminated chalcopyrite									
81.6	134.0	QUARTZ-FELDSPAR PORPHYRY: light grey-green quartz and feldspar phenocrysts in fine-grained matrix, slightly sericitic, minor fine carbonate, numerous veinlets, numerous chloritic fractures, occasional quartz veinlets, occasional flakes of molybdenite.	4051	81.6	91.6	10.0	0.09				
			4052	91.6	101.6	10.0	0.20				
			4053	101.6	111.6	10.0	0.15				
			4054	111.6	122.6	11.0	0.14				
			4055	122.6	134.0	11.4	0.17				
		2% disseminated pyrite, and occasionally in chloritic fractures 0.5% disseminated chalcopyrite									
134.0	152.8	INTERMEDIATE TUFF(?) very fine-grained, green, chloritic, faintly banded at 25°, numerous carbonate stringers.	4056	134.0	144.0	10.0	0.09				
			4057	144.0	152.8	8.8	0.27				
		149.0' - 152.8': predominantly light-grey tuff, sericitic with small quartz eyes.									
		2-4% disseminated pyrite, also in fractures 0.8% disseminated chalcopyrite									
152.8	168.1	QUARTZ-FELDSPAR PORPHYRY: grey, indistinct quartz and feldspar phenocrysts in fine-grained matrix, considerable fine carbonate, occasional veinlets. Numerous small chloritic flakes.	4058	152.8	160.8	8.0	0.40				
			4059	160.8	168.1	7.3	0.26				

## DIAMOND DRILL RECORD

 HOLE NO: 30-4  
 PAGE NO: 3

FOOTAGE		DESCRIPTION	SAMPLE NO	FOOTAGE		LENGTH	%	%				
from	to			from	to							
152.8	168.1	2-4% disseminated pyrite, also in fractures 0.8% disseminated chalcopyrite										
168.1	178.8	INTERMEDIATE TUFF: fine-grained, dark green chloritic, faintly banded, considerable fine carbonate, numerous veinlets, locally magnetic. 7-8% disseminated pyrite < 0.5% disseminated chalcopyrite	4060	168.1	178.8	10.7	0.17					
178.8	229.5	QUARTZ FELDSPAR PORPHYRY: similar to 152.0' - 168.0'. 5% disseminated pyrite 0.5% disseminated chalcopyrite 206.0' - 229.5': some zones medium-grained with more distinct phenocrysts. 5% disseminated pyrite 1-1/2% disseminated chalcopyrite flakes and veinlets molybdenite	4061 4062 4063 4064 4065	178.8 188.8 198.8 206.0 218.0	188.8 198.8 206.0 218.0 229.5	10.0 10.0 7.2 12.0 11.5	0.13 0.11 0.34 0.47 0.32		0.04	0.01		
229.5	273.0	ANDESITE: fine-grained, dark green, chloritic, schistose at 15°- 25°, highly carbonated, occasional gabbroic sections with epidote, also sections partially assimilated by porphyry. Numerous carbonate veinlets. 5-10% magnetite as fine-grained blebs and nearly-massive stringers 10% pyrite, disseminated and as blebs and stringers <0.5% chalcopyrite	4066 4067 4068 4069	229.5 241.5 253.5 263.5	241.5 253.5 263.5 273.0	12.0 12.0 10.0 9.5	0.11 0.07 0.17 0.35					

<0.5% chalcopyrite

## DIAMOND DRILL RECORD

HOLE NO: 30-4

PAGE NO: 4

FOOTAGE		DESCRIPTION	SAMPLE No	FOOTAGE		LENGTH	% Cu	% MoS <sub>2</sub>			
from	to			from	to						
229.5	273.0	243.0' - 253.0': gabbroic 253.0' - 273.0': partly assimilated Andesite									
273.0	290.7	QUARTZ-FELDSPAR (PORPHYRY?): medium-grained grey, abundant quartz and feldspars, considerable chloritic material, numerous carbonate veinlets, minor epidote. 273.5': Blebs of bornite. 5-10% disseminated magnetite 5-10% disseminated pyrite also in veinlets <0.5% disseminated chalcopyrite	4070 4071	273.0 281.0	281.0 290.7	8.0 9.7	0.25 0.09				
		286.0' - 290.7': rock becomes more feldspathic with 20-25% fine magnetite.									
290.7	294.2	GRANITE: coarse to medium-grained, pink, quartz, pink feldspar, occasional green feldspar in slightly finer matrix, abun- dant amphibole crystals, minor green epidote, numerous small blebs magnetite.  4-5% disseminated pyrite specks chalcopyrite flakes molybdenite	4072	290.7	294.2	3.5	0.05				
294.2	347.7	ANDESITE: similar to 229.0' - 273.0'.  294.0' - 317.0' gabbroic, 2-3% pyrite, specks chalcopyrite, disseminated mag- netite									
		317.0' - 347.0' andesite, highly car- bonated, finely disseminated magnetite.	4073 4074 4075	317.0 327.0 337.0	327.0 337.0 347.7	10.0 10.0 10.7	0.14 0.19 0.25				



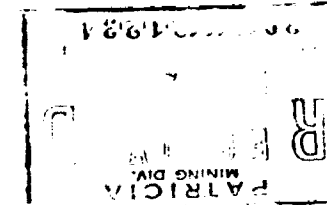
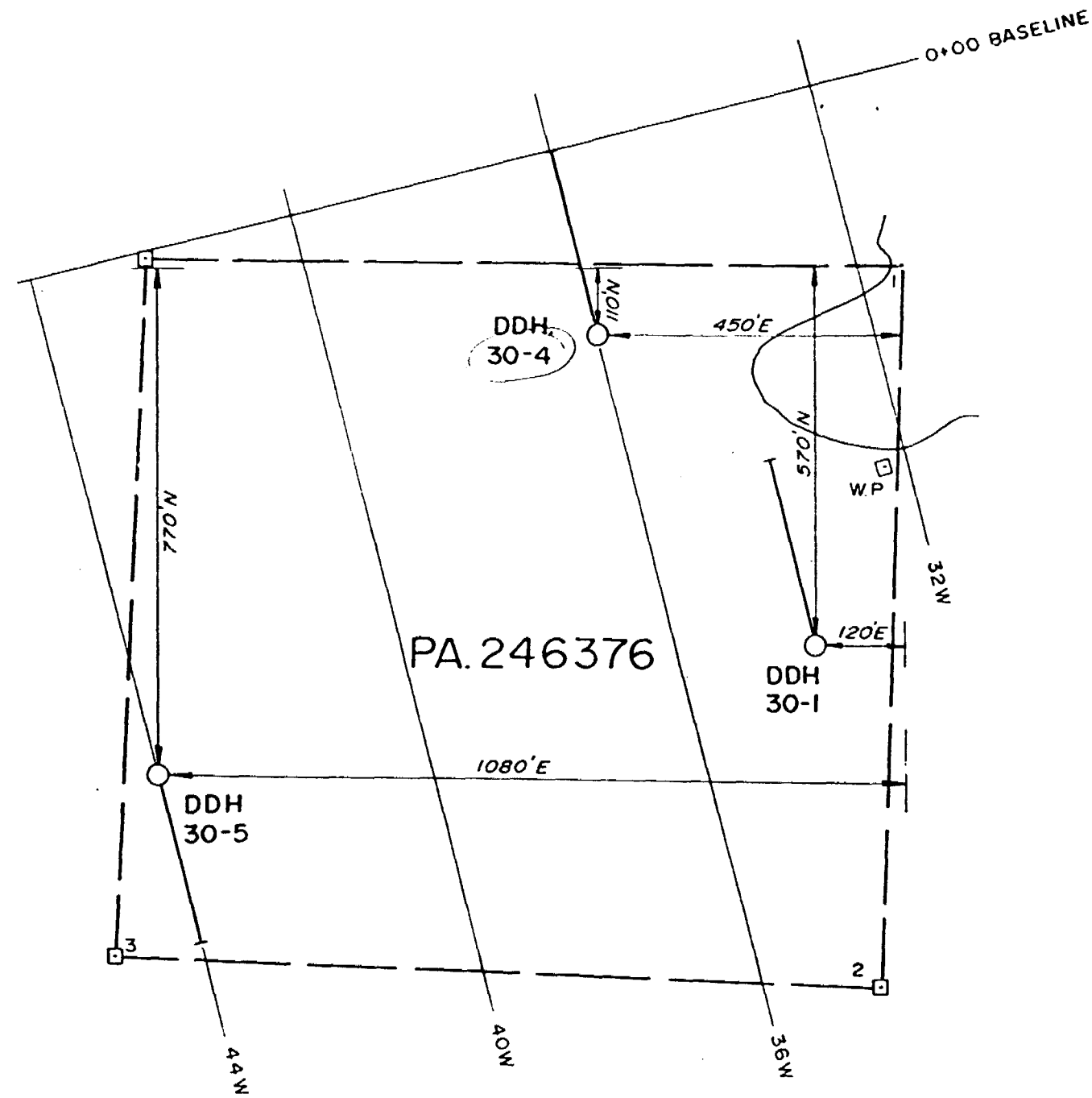


DIAMOND DRILL RECORD

HOLE NO: 30-4  
PAGE NO: 6

FOOTAGE		DESCRIPTION	SAMPLE NO	FOOTAGE		LENGTH				
from	to			from	to					
389.7	401.0	5-7% disseminated pyrite 0.9% disseminated chalcopyrite								
	401.0	END OF HOLE								
		Both IP and magnetic anomalies explained.								
		No radioactive or fluorescent minerals noted.								
		Core stored in trays on claim PA274834.								
		Drilling by Fathom Drilling, Box 3, Madsen, Ontario.								

*J. J. Halliday*  
*20*



1" = 200'

*L.S. Halliday*

DOME EXPLORATION (CANADA) LTD.				
PROJ 30 MINNITAKI LAKE AREA ONT.				
LOCATION MAP				
DDHs 30-1, 30-4, 30-5				
SCALE	DATE	BY	NTS No	DWG. No.
1" = 200'	DEC 71	A M	52-F-16	30-71-132

LOCATION: Line 44W - 7 + 62S. From Collar 770'

North and 1,080' East to Post 1-PA 246376

AZIMUTH 166°

DIAMOND DRILL RECORD

HOLE NO 30-5

PROPERTY: McCombe Option - Project 30

DIP - 45°

LENGTH 390'

ELEVATION 81' A.L.L.

CLAIM NO: PA 246376

STARTED September 2, 1971

CORE SIZE AXT

DATE LOGGED: Sept 8, 1971

SECTION:

COMPLETED September 6, 1971

DIP TESTS At 38° - 39° (corrected)

LOGGED BY: L.B. Halladay

PURPOSE: To test I.P. and magnetic anomalies

FOOTAGE		DESCRIPTION	SAMPLE NO	FOOTAGE		LENGTH	% Cu	% MoS <sub>2</sub>
from	to			from	to			
0.0	15.5	OVERBURDEN: clay						
15.5	95.0	QUARTZ-FELDSPAR PORPHYRY: abundant indistinct quartz and feldspar phenocrysts in fine-grained matrix, considerable chloritic material, locally slightly schistose with sericite. Minor carbonate veinlets.	4082	15.5	27.5	12.0	0.18	
			4083	27.5	39.0	12.0	0.07	
			4084	39.0	53.9	13.4	0.07	
			4085	53.9	57.0	3.1	0.04	
			4086	57.0	69.0	12.0	0.11	
			4087	69.0	81.2	12.2	0.19	
			4088	81.2	88.5	7.3	0.40	
			4089	88.5	95.0	6.5	0.06	
		5-10% disseminated magnetite, occasionally more massive						
		4% disseminated pyrite also in fractures						
		<0.5% disseminated chalcopryrite						
		53.9' - 57.0': fine-grained, green, inclusions of intermediate volcanic (?) schistose, chloritic, carbonate veinlets, minor pyrite, fine magnetite						
		81.2' - 88.5' numerous quartz veinlets, more siliceous rock, several large blebs pyrite and chalcopryrite plus some disseminated (0.8% chalcopryrite).						

## DIAMOND DRILL RECORD

HOLE NO:

30-5

PAGE NO

2

FOOTAGE		DESCRIPTION	SAMPLE NO	FOOTAGE		LENGTH
from	to			from	to	
95.0	109.2	QUARTZ PORPHYRY: light grey-green, occasional quartz phenocrysts in fine-grained sericitic matrix, a few scattered feldspars, occasional quartz and carbonate veinlets, minor magnetite.  2-3% disseminated pyrite <0.3% disseminated chalcopyrite				
109.2	114.4	QUARTZ-FELDSPAR PORPHYRY: similar to 15.0' - 95.0'				
114.4	119.1	QUARTZ PORPHYRY: fine-grained, light green, occasional quartz phenocrysts in sericitic and schistose matrix. schistosity at 75° to core axis, quartz, feldspar and carbonate veinlets, minor pyrite, chalcopyrite.				
119.1	190.2	QUARTZ-FELDSPAR PORPHYRY: dark blue-grey to purple, indistinct quartz, white and green feldspar phenocrysts in fine-grained, purplish matrix, numerous quartz stringers, occasional carbonate stringers, locally slightly schistose and sericitic, minor chloritic material  5-10% disseminated magnetite 4-5% disseminated pyrite <0.5% disseminated chalcopyrite A few flakes of molybdenite.				

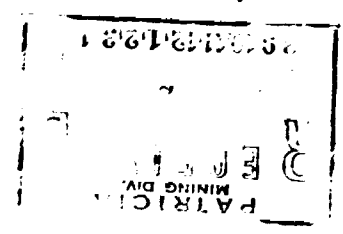
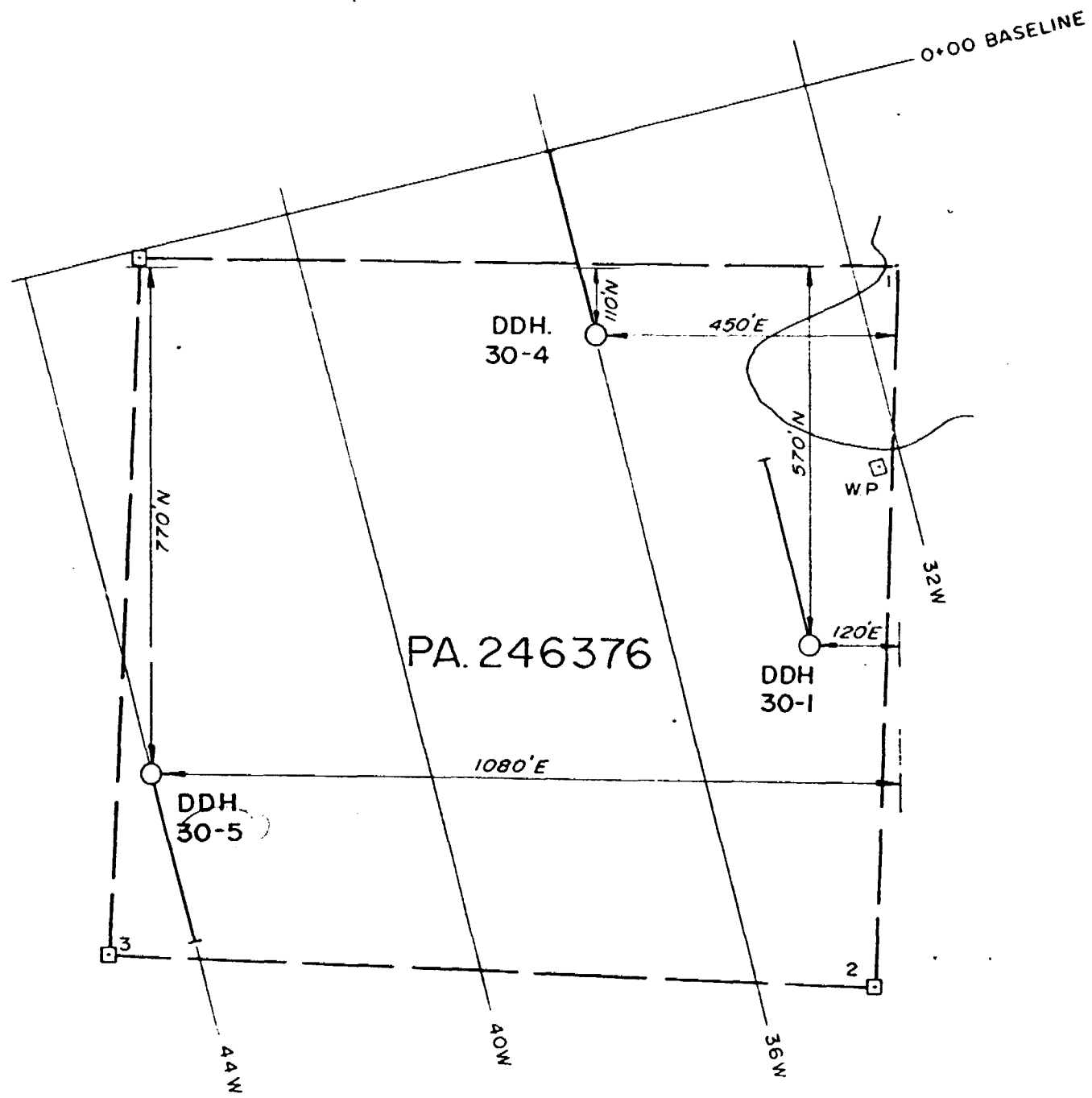
## DIAMOND DRILL RECORD

HOLE NO: 3C-5

PAGE NO 3

FOOTAGE		DESCRIPTION	SAMPLE NO	FOOTAGE		LENGTH	%	%
from	to			from	to			
190.2	254.0	QUARTZ-FELDSPAR PORPHYRY: distinct quartz indistinct white and green feldspar phenocrysts in fine-grained, greenish matrix, locally slightly schistose and sericitic, some fine carbonate and veinlets.	4090	193.0	195.5	2.5	0.03	
			4091	195.5	205.5	10.0	0.08	
		193.0' - 195.5': specks and stringers of black, metallic, non-magnetic mineral.						
		3-4% disseminated pyrite, also in veinlets decreasing with depth						
		<0.5% disseminated chalcopyrite						
		2-4% disseminated magnetite						
		Minor molybdenite along fractures						
254.0	357.6	QUARTZ-FELDSPAR PORPHYRY medium-grained dark blue-grey to purple, abundant quartz, white and green feldspars, chlorite wisps, considerable fine carbonate, occasional quartz stringers.						
		2-3% fine disseminated magnetite						
		2-3% fine disseminated pyrite						
		Minor disseminated chalcopyrite.						
357.6	362.7	QUARTZ-FELDSPAR PORPHYRY fine-grained, light grey-green, occasional indistinct quartz and feldspar phenocrysts in locally schistose and sericitic matrix. Some sections similar to 254.0' - 357.0'. Occasional carbonate stringers.						





1" = 200'

*L.B. Halladay*

DOME EXPLORATION (CANADA) LTD				
PROJ 30 MINNITAKI LAKE AREA ONT.				
LOCATION MAP				
DDHs 30-1, 30-4, 30-5				
SCALE	DATE	BY	NTS No	DWG No.
1" = 200'	DEC 71	A M	52-F-16	30-71-132





DIAMOND DRILL RECORD

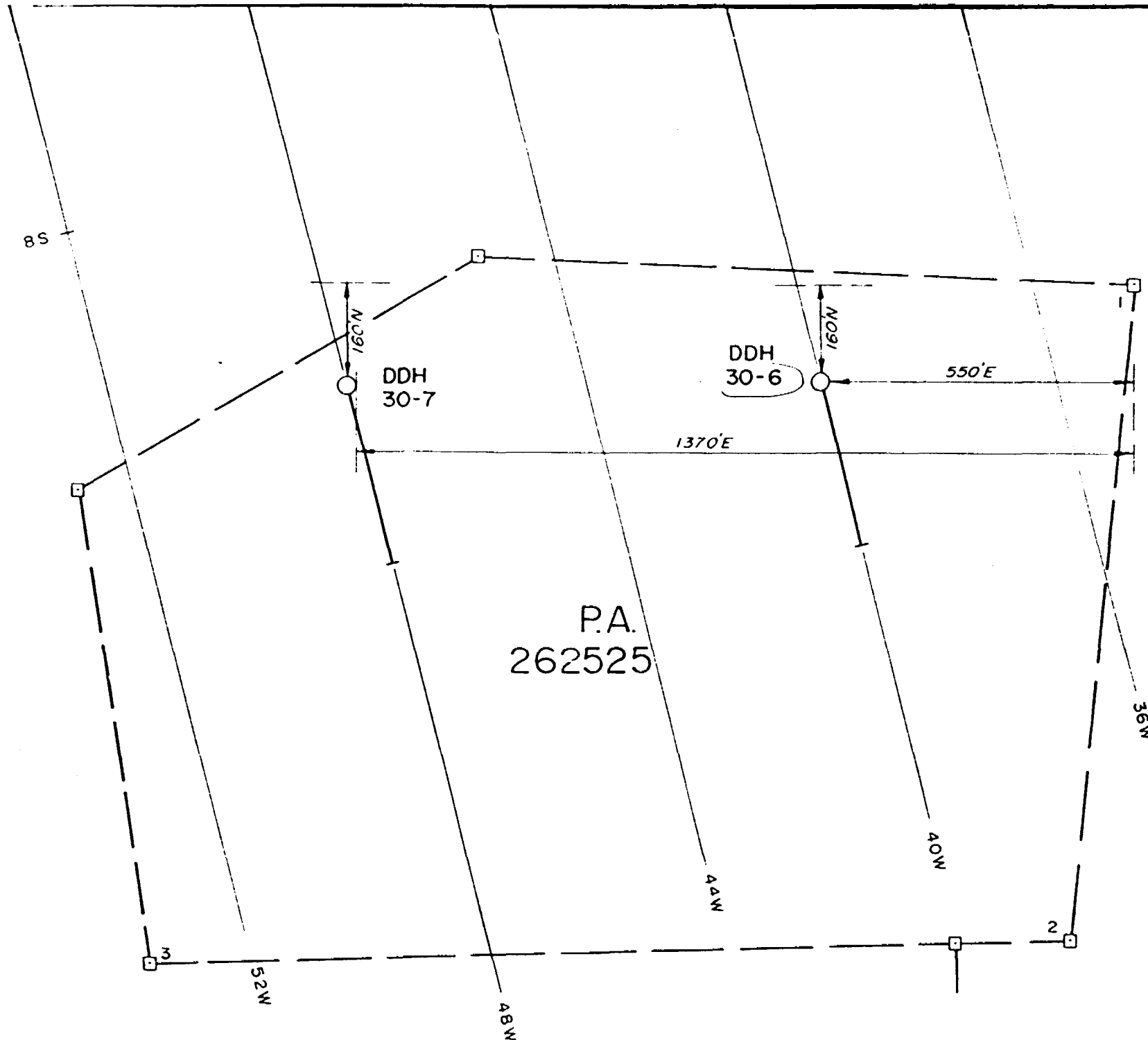
HOLE NO.

PAGE NO.

FOOTAGE		DESCRIPTION	SAMPLE NO	FOOTAGE		LENGTH
from	to			from	to	
40.5	55.5	rhyolite flow.  2-4% disseminated pyrite Specks chalcopyrite.				
55.5	64.7	QUARTZ-FELDSPAR PORPHYRY dark grey-green, abundant indistinct quartz and feldspar phenocrysts with considerable chlorite., schistose at 65°				
64.7	119.3	QUARTZ-FELDSPAR PORPHYRY (?) fine-grained light grey to pink, slightly schistose with minor sericite, occasional sections with a few indistinct quartz and feldspar phenocrysts. Possibly rhyolite flow. Occasional carbonate veinlets.  2-4% pyrite, disseminated and in chloritic fractures, locally up to 5%.				
119.3	144.7	INTERMEDIATE PORPHYRY medium-grained, dark green, indistinct quartz, white and occasional green feldspar phenocrysts, abundant chlorite and possibly amphiboles. (Quartz diorite composition). Slightly schistose at 80°. Numerous carbonate veinlets.  2-3% disseminated pyrite A few specks chalcopyrite.				







785 200001284  
 RD  
 MINING DIV.  
 PATRICK

P.A.  
 262525



1"=200'

*L.B. Holladay*  
 DOME EXPLORATION (CANADA) LTD  
 PROJ. 33 MINNETAKI LAKE AREA ONT  
 LOCATION MAP  
 DDHs 30-6 & 30-7  
 SCALE DATE SHEET NO. DWG. NO.  
 200 DEC 71 A.M. 52-F-16. 137

LOCATION: Line 48W, 11 + 65S. From collar 160' North  
 & 1,370' East to Post 1-PA 262525

DIAMOND DRILL RECORD

HOLE NO 30-7

AZIMUTH: 166°

PROPERTY: McCombe Option - Project 30

DIP: - 45°

LENGTH: 408'

ELEVATION: 143' A.L.L.

CLAIM NO: PA 262525

STARTED: September 11, 1971

CORE SIZE: AXT

DATE LOGGED: September 14/1971 SECTION:

COMPLETED: September 13, 1971

DIP TESTS: At 400' - 33° (corrected)

LOGGED BY: L.B. Halladay

PURPOSE: To test IP anomaly

FOOTAGE		DESCRIPTION	SAMPLE NO	FOOTAGE		LENGTH	% Cu	% MoS <sub>2</sub>				
from	to			from	to							
0.0	6.1	OVERBURDEN: clay										
6.1	35.3	QUARTZ-FELDSPAR PORPHYRY: medium-grained, dark blue-grey to purple, abundant quartz, white and green feldspar phenocrysts, some chlorite, considerable fine carbonate (rusty to 27.0'), occasional carbonate veinlets.  3-4% finely disseminated magnetite 1% finely disseminated pyrite <0.3% finely disseminated chalcopyrite										
35.3	100.0	QUARTZ-FELDSPAR PORPHYRY: light grey, indistinct quartz and feldspar phenocrysts in fine-grained matrix, considerable fine carbonate and occasional stringers, quartz veinlets and silicified zones.  2-4% disseminated pyrite, also as large blebs Minor disseminated chalcopyrite  66.3' - 100.0' 2-4% disseminated pyrite  0.5% disseminated	4092	66.3	76.3	10.0	0.15					
			4093	76.3	88.3	12.0	0.15					
			4094	88.3	100.0	11.7	0.10					

## DIAMOND DRILL RECORD

HOLE NO: 30-7

PAGE NO: 2

PAGE		DESCRIPTION	SAMPLE NO	FOOTAGE		LENGTH	% Cu	% MoS <sub>2</sub>				
From	To			From	To							
100.0	162.3	QUARTZ-FELDSPAR PORPHYRY: similar to 6.0' to 35.0', slightly schistose at 65° to core axis with sericite development and minor chlorite, occasionally lighter coloured and with less magnetite than 6.0' - 35.0'	4095	100.0	110.0	10.0	0.16					
			4096	110.0	120.0	10.0	0.25					
			4097	120.0	130.0	10.0	0.16					
			4098	130.0	140.0	10.0	0.22					
			4099	140.0	152.0	12.0	0.29					
			4100	152.0	162.3	10.3	0.25					
		1% disseminated pyrite										
		0.5 - 1% disseminated chalcopyrite										
162.3	169.5	QUARTZ-FELDSPAR PORPHYRY: light grey, abundant distinct quartz and feldspar phenocrysts in fine-grained matrix, minor chlorite, considerable fine carbonate, occasional carbonate and quartz veinlets. Possibly a dyke.	4410	162.3	169.5	7.2	0.39					
		1% disseminated pyrite										
		1% disseminated chalcopyrite										
169.5	179.3	QUARTZ-FELDSPAR PORPHYRY: similar to 6.0' - 35.0', becomes more schistose	4411	169.5	179.3	9.8	0.23					
		174.0' - 177.0': fine-grained, light grey, sericitic										
		2-3% disseminated magnetite										
		<1% disseminated pyrite										
		1% disseminated chalcopyrite										
179.3	197.1	QUARTZ-FELDSPAR PORPHYRY: light-grey, occasional indistinct quartz and feldspar phenocrysts in fine-grained, locally sericitic matrix, locally schistose at 65°, some fine carbonate, numerous veinlets.	4412	179.3	189.3	10.0	0.05					
			4413	189.3	197.1	7.8	0.09					





DIAMOND DRILL RECORD

HOLE NO: 30-7

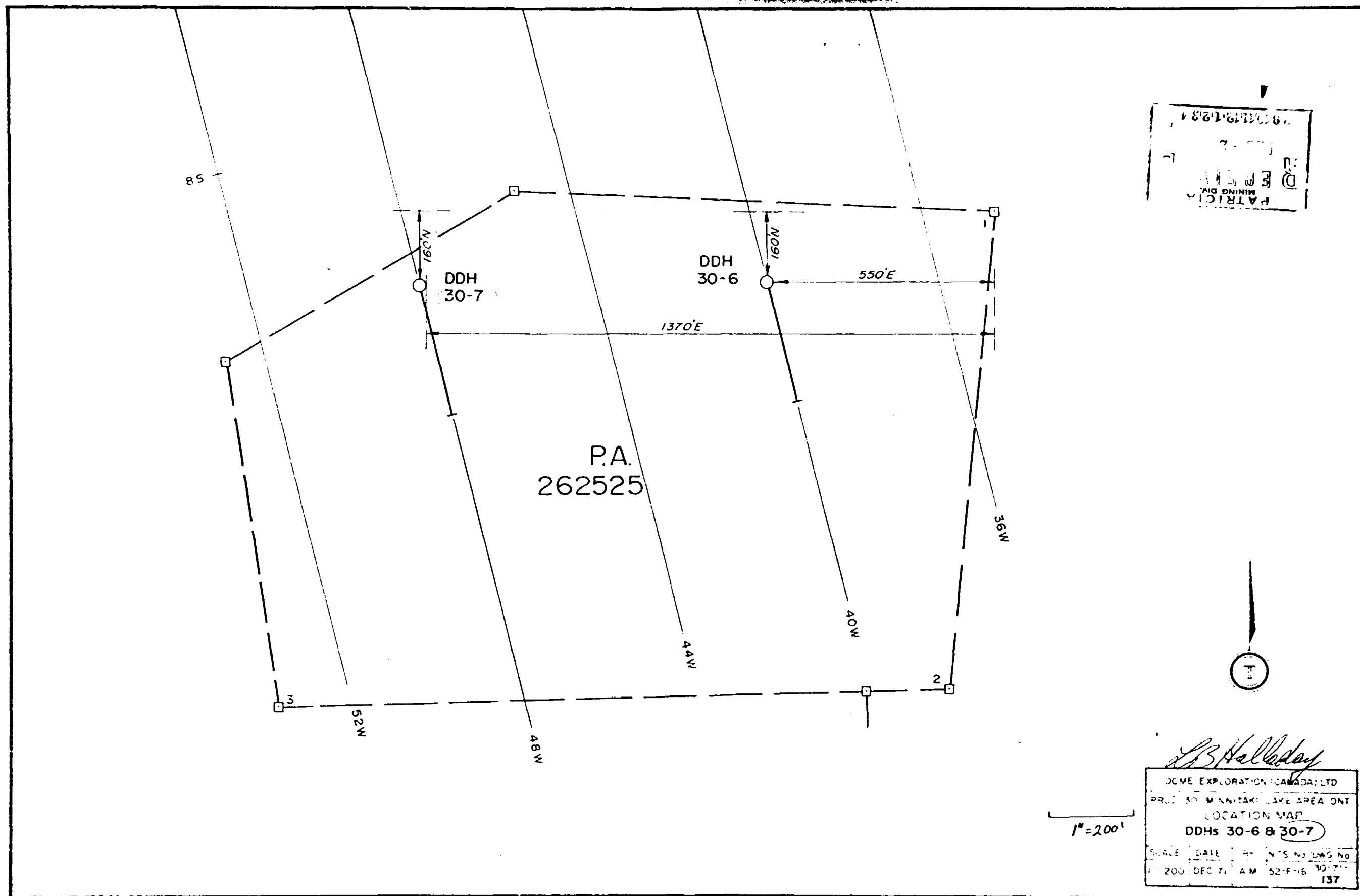
PAGE NO: 4

FOOTAGE		DESCRIPTION	SAMPLE NO	FOOTAGE		LENGTH						
from	to			from	to							
299.7	408.0	QUARTZ PORPHYRY : distinct quartz and occasional indistinct green feldspar phenocrysts in fine-grained light grey-green to pink matrix, schistose ( 65°) and sericitic, some fine carbonate. With numerous sections similar to 6.0' - 35.0' but with no magnetite										
		1% disseminated pyrite Specks chalcopyrite										
		351.0' - 408.0' considerable chlorite as flakes and in fractures, also several quartz veinlets.										
408.0		<u>END OF HOLE</u>										
		Sulphides and magnetite appear to be less than would be expected from IP results.										
		No radioactive or flouorescent minerals were noted.										
		Core stored in trays on claim PA 274834.										
		Drilling by Fathom Drilling Ltd., Box 3, Madsen, Ontario.										

PA 274834  
MINING DIV.  
ONTARIO  
1974

*L. S. Madsen*

PATRICIA  
 MINING DIV.  
 DEPT. OF  
 MINES  
 1281







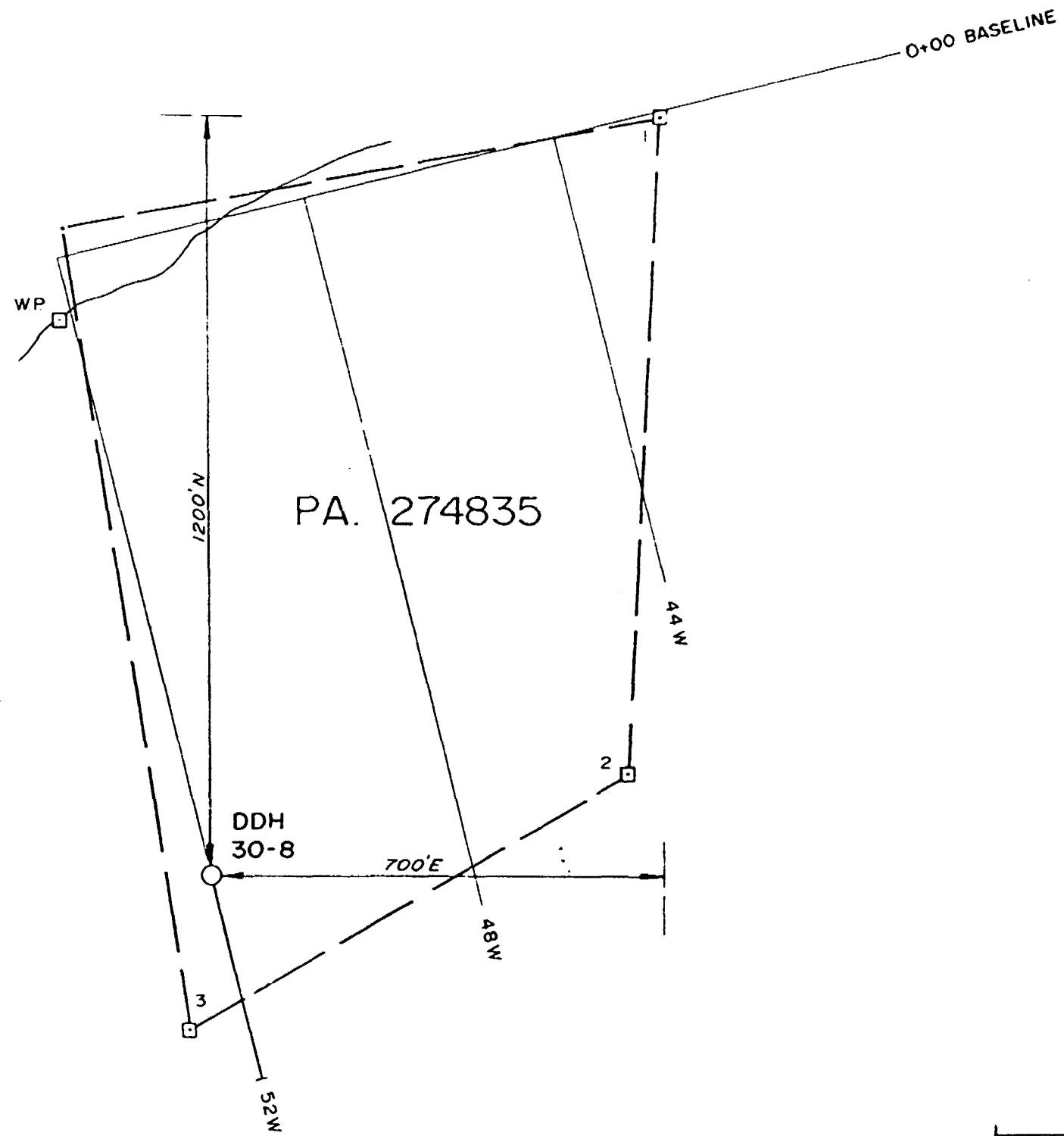


DIAMOND DRILL RECORD

HOLE NO: 30-8  
PAGE NO: 4

FOOTAGE		DESCRIPTION	SAMPLE NO	FOOTAGE		LENGTH						
from	to			from	to							
418.1	439.0	QUARTZ PORPHYRY: quartz phenocrysts, occasional indistinct feldspar phenocrysts in fine-grained, light grey-green, slightly schistose and sericitic matrix. Some carbonate.  1% disseminated pyrite Specks chalcopyrite										
439.0	502.0	QUARTZ-FELDSPAR PORPHYRY: abundant quartz, white and green feldspar phenocrysts in fine-grained, dark grey-green matrix, slightly schistose, chlorite wisps, minor sericite, considerable fine carbonate, occasional veinlets.  1-2% disseminated pyrite Specks chalcopyrite										
502.0		END OF HOLE  Total sulphides appear to be less than suggested by I.P.  Core stored in trays on claim PA 274834  No fluorescent or radioactive minerals were noted.  Drilling by Fathom Drilling Ltd., Box 3, Madsen, Ontario										

*Handwritten signature and date:*  
13  
1957



PATRICIA  
 MINING DIV.  
 SP  
 789 0000000082

PA. 274835



1" = 200'

*L. B. Halladay*

DOME EXPLORATION (CANADA) LTD				
PROJ 30 MINNITAKI LAKE AREA ONT.				
LOCATION MAP				
DDH. 30-8				
SCALE	DATE	BY	N.T.S. No.	DWG. No.
1" = 200'	DEC 71	A M	52-F-16	30-71-134

















## DIAMOND DRILL RECORD

HOLE NO. \_\_\_\_\_

PAGE NO. \_\_\_\_\_

FOOTAGE		DESCRIPTION	SAMPLE NO	FOOTAGE		LENGTH			
from	to			from	to				
113.2	141.8	QUARTZ-FELDSPAR PORPHYRY: quartz and feldspar phenocrysts in fine-grained, green matrix with considerable epidote as flakes and in fractures. 1-2% pyrite, disseminated and in veinlets <0.3% disseminated chalcopyrite, locally concentrated.  A few inclusions (?) of gabbro in last 4.0'.							
141.8	240.7	GABBRO: medium-grained, dark green, chloritic with considerable epidote. Numerous carbonate veinlets. Minor magnetite locally concentrated. 2-3% pyrite, disseminated and in veinlets Specks chalcopyrite.  153.8' - 156.5': quartz-feldspar porphyry with pyrite and chalcopyrite.  170.0', 175.0', 208.0': small inclusions intermediate volcanic  208.8' - 217.5': more siliceous. Increase in pyrite and chalcopyrite  227.0' - 240.0': becomes increasingly schistose and chloritic with numerous carbonate veinlets. 3% pyrite, disseminated and in fractures Minor disseminated chalcopyrite.							

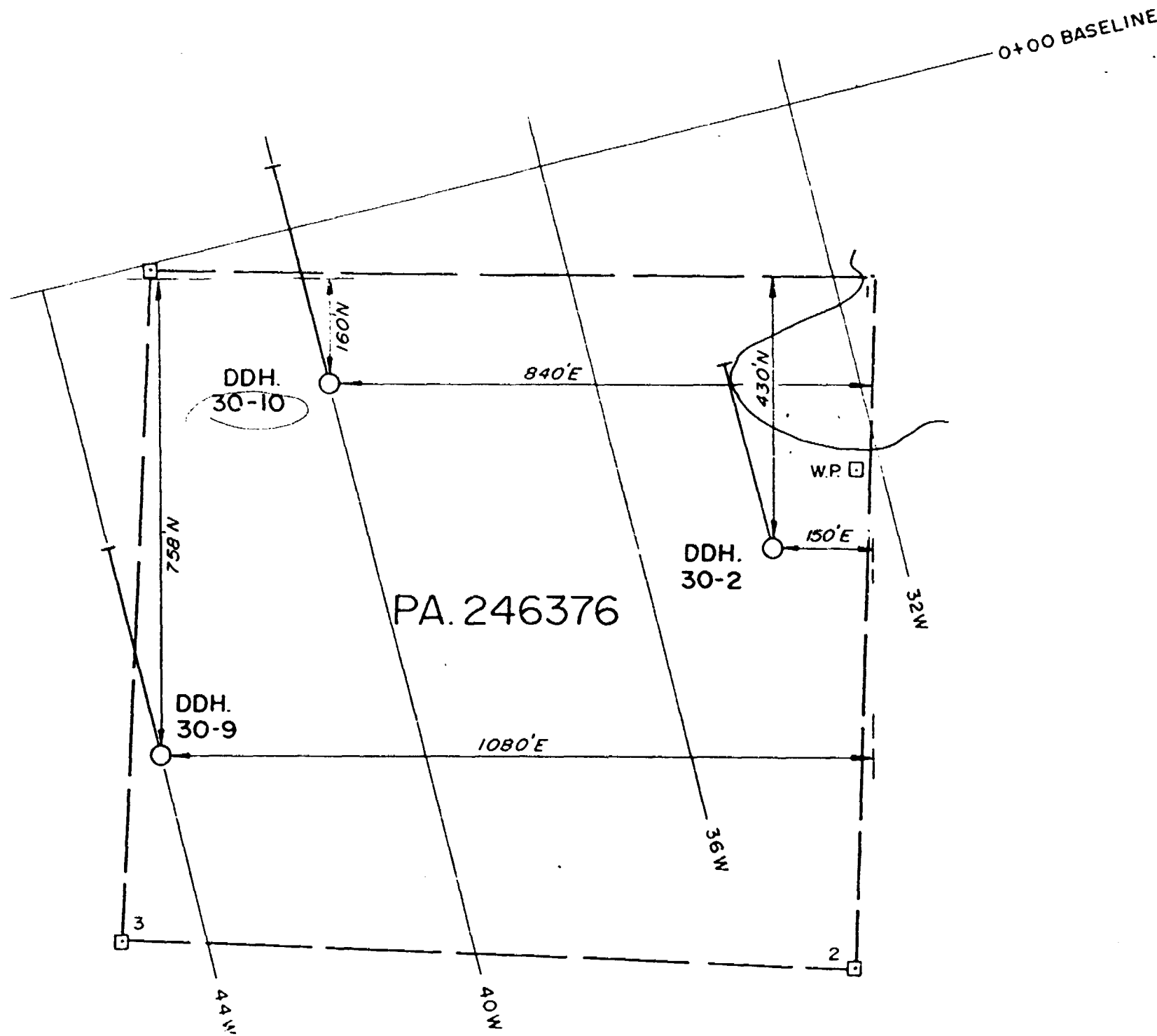




DIAMOND DRILL RECORD

HOLE NO: 30-10  
PAGE NO: 4

FOOTAGE		DESCRIPTION	SAMPLE NO	FOOTAGE		LENGTH														
from	to			from	to															
358.0	409.3	icified zones and quartz veinlets, some small blebs and wisps of chlorite. 1-2% disseminated pyrite. Minor disseminated chalcopryite usually in quartz. A few flakes of molybdenite.																		
409.3	427.0	QUARTZ PORPHYRY: similar to 348.0' - 358.0'.																		
427.0	451.0	QUARTZ-FELDSPAR PORPHYRY: similar to 358.0' - 409.0' with considerable fine chlorite.																		
451.0	476.0	QUARTZ-FELDSPAR PORPHYRY: abundant quartz and feldspar phenocrysts in fine-grained, dark grey matrix, considerable chlorite as wisps and large blebs (altered inclusions), occasional carbonate veinlets, some fine carbonate, a few quartz veinlets. 464.0' - 465.0': heavy chlorite 2-3% disseminated pyrite. Magnetite stringer at 476.0'.																		
476.0		END OF HOLE																		
		I.P. and magnetic anomalies adequately explained by mineralization encountered in hole.																		
		No fluorescent or radioactive minerals were noted.																		
		Core stored in trays on Claim PA274834																		



PATRICIA  
 MINING DIV.  
 R.E.  
 7189-0-10-19-2-1



*L.B. Halladay*

DOME EXPLORATION (CANADA) LTD				
PROJ 30 MINNITAKI LAKE AREA ONT				
LOCATION MAP				
DDHs. 30-2, 30-9, 30-10				
SCALE	DATE	BY	NTS No	DWG. No
1" = 200'	DEC. 71	A.M.	52-F-16	30-71-131





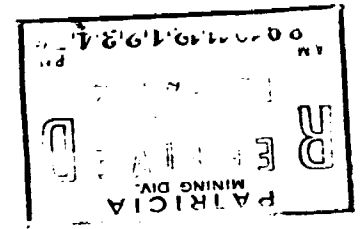
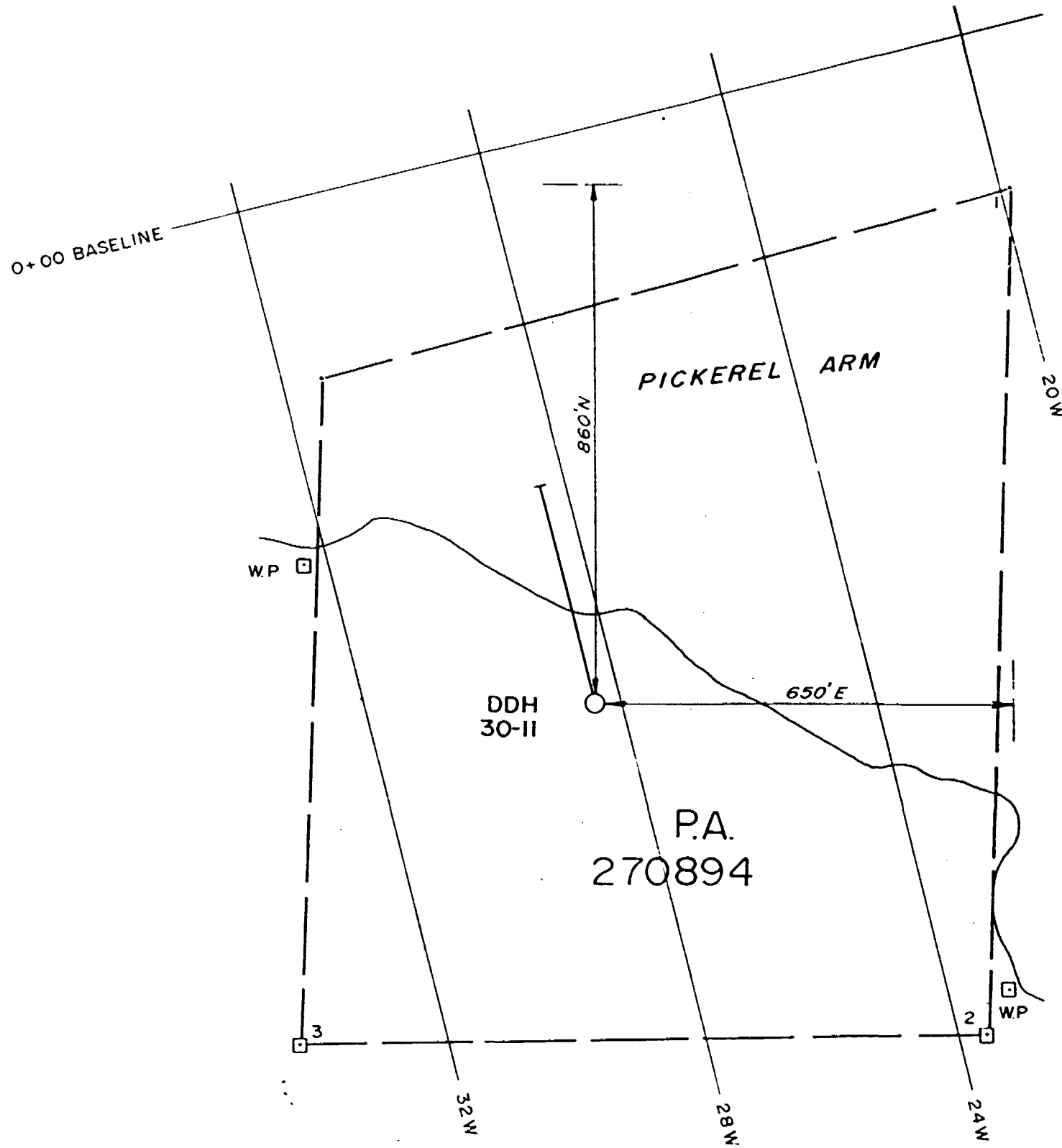
DIAMOND DRILL RECORD

HOLE NO: 30-11

PAGE NO: 3

FOOTAGE		DESCRIPTION	SAMPLE NO	FOOTAGE		LENGTH							
from	to			from	to								
202.0	389.0	pyrite and molybdenite. Occasional sections with small white feldspar crystals. Core becomes more broken with depth.											
		280.0' - 389.0': 75% core recovery.											
389.0	399.0	DIORITE: fine to medium-grained, dark green chloritic dyke.											
399.0	470.3	<u>QUARTZ-FELDSPAR PORPHYRY</u> indistinct quartz and feldspar phenocrysts in fine-grained, grey-green matrix with considerable chloritic material, schistose at 25' to core axis. Minor disseminated pyrite, chalcopyrite, molybdenite.											
470.3	487.0	<u>QUARTZ-FELDSPAR PORPHYRY</u> : indistinct quartz, white and green feldspar phenocrysts in fine-grained dark blue-grey matrix. Considerable chloritic material, some fine magnetite. Minor pyrite. Minor chalcopyrite, locally concentrated.											
487.0		END OF HOLE											
		Core stored in trays on claim PA274834.											
		No radioactive or fluorescent minerals noted.											
		Drilling by Fathom Drilling Ltd.,											

*[Handwritten signature]*



1"=200'

*L. J. Holladay*

DOME EXPLORATION (CANADA) LTD				
PROJ 30 MINNITAKI LAKE AREA ONT.				
LOCATION MAP				
DDH 30-II				
SCALE	DATE	BY	NTS No	DWG No.
1"=200'	DEC 71	A M	52-F-16	30-71-138



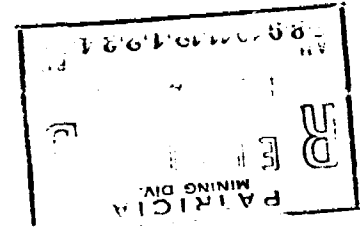
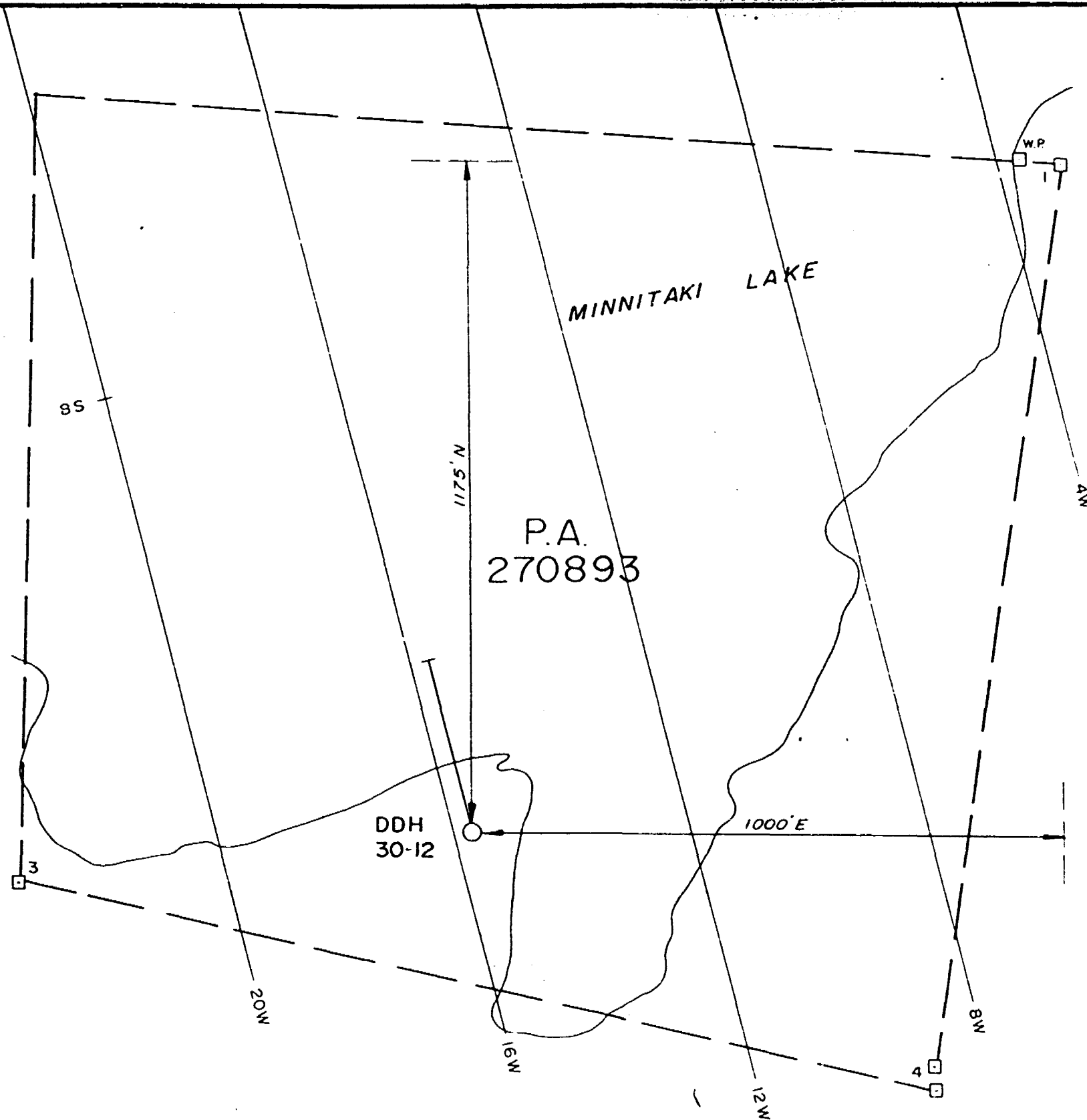
DIAMOND DRILL RECORD

HOLE NO. \_\_\_\_\_  
PAGE NO. \_\_\_\_\_

FOOTAGE		DESCRIPTION	SAMPLE NO	FOOTAGE		LENGTH			
from	to			from	to				
146.3	192.5	184.8' - 188.0': quartz porphyry.							
192.5	215.6	QUARTZ PORPHYRY: large quartz phenocrysts, occasional feldspar phenocrysts in fine-grained, light green matrix, slightly sericitic and schistose at 30° to core axis. Specks pyrite and chalcopyrite.							
215.6	240.5	QUARTZ-FELDSPAR PORPHYRY: quartz and feldspar phenocrysts in fine-grained, grey-green matrix. Specks pyrite.							
240.5	330.0	QUARTZ PORPHYRY: similar to 192.0' - 215.0', some fine carbonate, numerous veinlets.  271.0' - 278.0' and 296.0' - 303.0': brecciated with carbonate filling; minor pyrite, chalcopyrite, molybdenite.							
330.0	342.0	QUARTZ-FELDSPAR PORPHYRY(?): indistinct quartz and feldspar phenocrysts in fine-grained, light grey matrix. (Possible flow). Minor disseminated pyrite <0.3% finely disseminated chalcopyrite Minor molybdenite along fractures.							
342.0	371.0	QUARTZ PORPHYRY(?): quartz phenocrysts becoming indistinct with depth, in fine-grained, grey to pink brecciated matrix with fine carbonate and numerous veinlets, becomes increasingly chloritic.							







1" = 200'

*L.B. Helleberg*

DOME EXPLORATION (CANADA) LTD				
PROJ 30 MINNITAKI LAKE AREA ONT.				
LOCATION MAP				
DDH 30-12				
SCALE	DATE	BY	NTS No	DWG No
1" = 200'	DEC 71	A.M.	52-F-16	30-71-136



## DIAMOND DRILL RECORD

HOLE NO: 30-13

PAGE NO: 2

FOOTAGE		DESCRIPTION	SAMPLE NO	FOOTAGE		LENGTH	% Cu	% Zn	% MoS <sub>2</sub>	Au oz/ton	Ag oz/ton
from	to			from	to						
21.2	93.9	66.0' - 70.1': quartz-feldspar porphyry: 2-3% disseminated pyrite, <0.3% disseminated chalcopyrite									
		77.0' - 84.4' and 85.0' - 87.4': rhyolite, fine-grained, green, locally tuffaceous and sericitic, brecciated with carbonate and chlorite filling									
		5% pyrite, disseminated and as veinlets									
		Minor disseminated chalcopyrite									
		87.4' - 89.2': quartz-feldspar porphyry									
93.9	138.0	SILICEOUS TUFF: fine-grained, light grey-green, well banded at 75°, sericitic.	4429	105.8	115.8	10.0	0.13	Trace			
			4430	115.8	125.8	10.0	0.25	Trace			
			4431	125.8	138.0	12.2	0.28	Trace			
		5-6% pyrite, usually in large blebs									
		Minor disseminated chalcopyrite									
		1% disseminated magnetite									
		95.0' - 98.5': quartz porphyry									
		101.9' - 105.8': diorite: fine to medium-grained, green, epidote, 2-3% disseminated pyrite									
		118.0' - 138.0' becomes more chloritic with short sections intermediate volcanics and gabbro.									
138.0	371.6	GABBRO: coarse to medium-grained, dark green, amphibolitic, epidotized,	4432	218.1	228.1	10.0	0.08	Trace			
		massive, occasional carbonate vein-	4433	228.1	235.3	7.2	0.71	Trace			
			4434	235.3	241.6	6.3	0.39	Trace			



## DIAMOND DRILL RECORD

HOLE NO: 30-13

PAGE NO: 4

FOOTAGE		DESCRIPTION	SAMPLE NO	FOOTAGE		LENGTH	Cu	Zn	MoS <sub>2</sub>	Au oz/ton	Ag oz/ton
from	to			from	to						
138.0	371.6	361.0' - 371.6': gabbro - sheared with quartz and carbonate veinlets and quartz-feldspar porphyry in- jections 1-2% pyrite veinlets 0.5% chalcopryite as large blebs and veinlets.									
371.6	394.2	QUARTZ-FELDSPAR PORPHYRY: occasional quartz and feldspar phenocrysts in fine- grained, light grey matrix, schistose and sericitic in upper part at 45°, some included (?) gabbro. 3% disseminated pyrite <0.3% disseminated chalcopryite Minor molybdenite	4436 4437	371.6 382.6	382.6 394.2	11.0 11.6	0.29 0.13	Trace Trace			
394.2	438.0	GABBRO: similar to 138.0' - 371.0', core broken and partly leached. 1-2% disseminated pyrite Minor disseminated chalcopryite  398.0' - 400.0': zone of quartz, carbonate, chlorite with 3-4% pyrite, 1% chalcopryite, minor molybdenite.  427.5' - 441.6': porphyritic inter- mediate dyke: similar to 278.0' - 286.0', grades into coarse-grained, massive gabbro.  454.3' - 457.2': quartz-feldspar porphyry, 1% pyrite, 0.5% chal- copyrite.	4438	394.2	404.2	10.0	0.56	Trace			

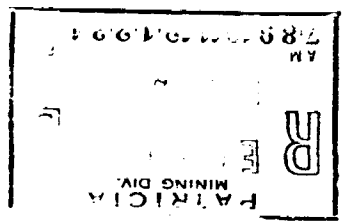
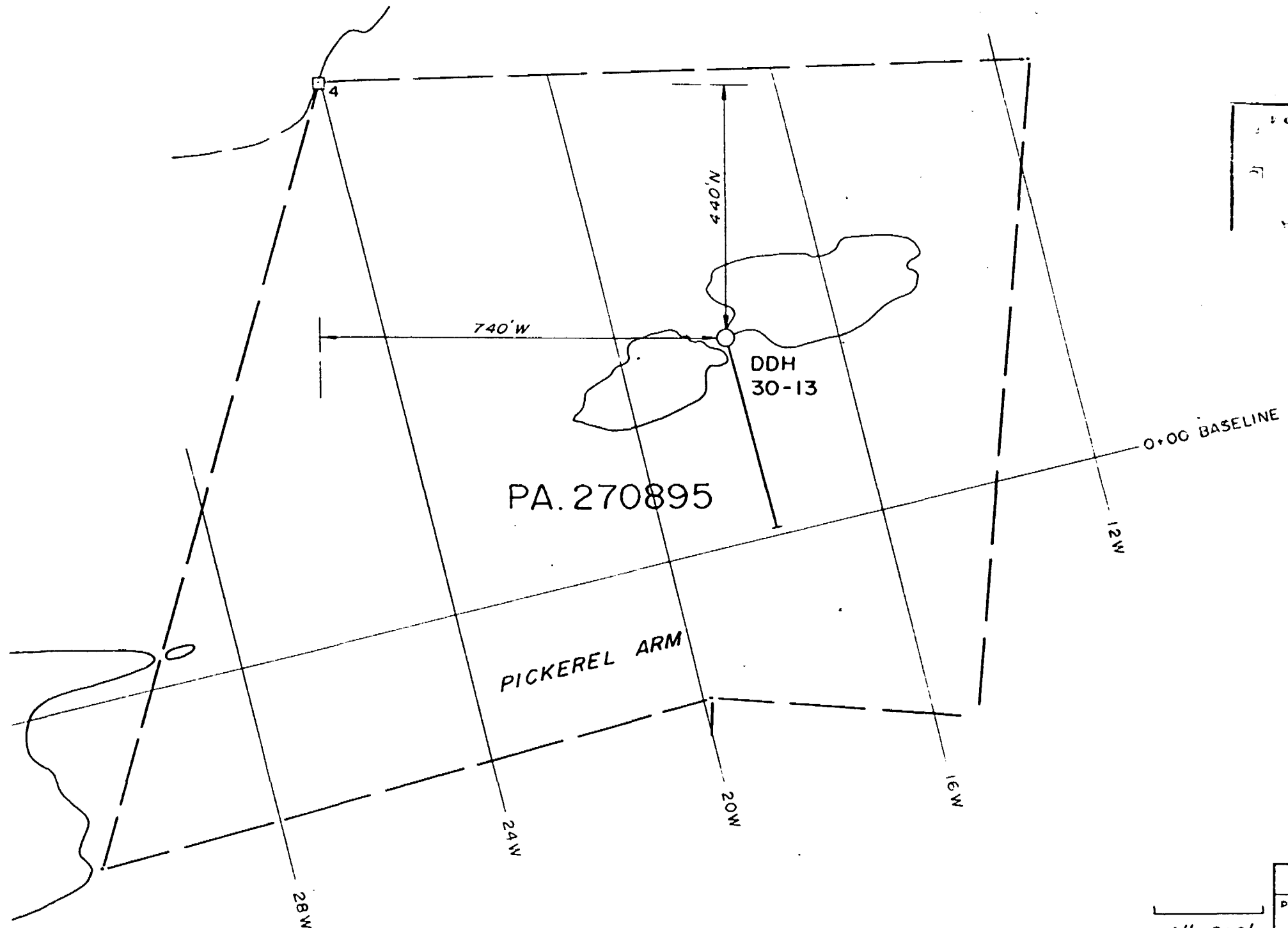
DIAMOND DRILL RECORD

HOLE NO: 30-13

PAGE NO: 5

FOOTAGE		DESCRIPTION	SAMPLE NO	FOOTAGE		LENGTH										
from	to			from	to											
394.2	488.0	478.5' - 483.8': chloritic intermediate tuff with possibly some siliceous fragments, quartz and carbonate veinlets, schistose at 50°.														
		1-2% disseminated pyrite														
		<0.3% disseminated chalcopyrite														
		483.8' - 488.0': schistose, chloritic gabbro, considerable fine carbonate, numerous veinlets.														
	488.0	END OF HOLE														
		Sulphides and magnetite are probable causes of I.P. and magnetic anomalies.														
		Core stored in trays on claim PA27483.														
		No fluorescent or radioactive minerals were noted.														
		Drilling by Fathom Drilling Ltd., Box 3, Madsen, Ontario.														

*J. H. [Signature]*  
30-13



1"=200'

DOME EXPLORATION (CANADA) LTD				
PROJ 30 MINNITAKI LAKE AREA ONT.				
LOCATION MAP				
DDH. 30-13				
SCALE	DATE	BY	INTS No	DWG No
1"=200'	DEC 71	A.M.	52-F-16	30-71-135

PA. 270895

PICKEREL ARM

DDH 30-13

4

440' N

740' W

0+00 BASELINE

12W

16W

20W

24W

28W



PICKEREL Twp.

Geol  
10/10/72  
(6) 1972

52F/16NE



M-2258

A separate form is required for each type of work to be recorded.

#30

THE MINING ACT REPORT OF WORK

To the Recorder of PATRICIA Mining Division

DOME EXPLORATION (CANADA) LIMITED A21304

name of Recorded Holder Miner's Licence

SUITE 702 360 BAY STREET, TORONTO 105, ONTARIO

do hereby report the performance of 2301 days of Diamond Drilling type of work

not before reported to be applied on the following contiguous claims

Claim No. Days Claim No. Days Claim No. Days

See Attached Schedule

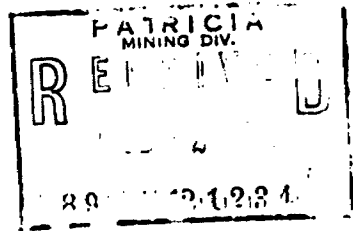
PA 246376, 274835, 270893, 270894, 270895

All the work was performed on Mining Claim (s) (In the case of geological and/or geophysical survey (s) where more than 18 claims are involved attach a schedule)

READ CAREFULLY: THE FOLLOWING INFORMATION IS REQUIRED BY THE MINING RECORDER.

- For Manual Work, Stripping or Opening up of Mines, Sinking Shafts or Other Actual Mining Operations - Names and addresses of the men who performed the work and the dates and hours of their employment.
For Diamond and other Core Drilling - Footage, No. and angle of holes and diameter of core. Name and address of owner or operator of drill. Dates when drilling was done. Signed core log and sketch in duplicate.
For Compressed Air or Other Power Driven or Mechanical Equipment
Type of drill or equipment. Names and addresses of men engaged in operating equipment and the dates and hours of their employment.
For Power Stripping - Type of equipment. Name and address of owner or operator. Amount expended. Dates on which work was done. Proof of actual cost must be submitted within 30 days of recording.
With each of the above types of work sketches are required to show the location and extent of the work in relation to the nearest claim post. In the case of diamond or other core drilling the sketch must be submitted in duplicate.
For Geological and Geophysical Survey - The names and addresses of men employed as well as dates. Type of instrument used in the case of geophysical survey. Reports and maps in duplicate must be filed with the Minister within 60 days of recording.
For Land Survey - the name and address of Ontario Land surveyor.

The Required Information is as Follows: (Attach a list if this space is insufficient)



Date FEBRUARY 1, 1972

L.B. Halladay
Signature of Recorded Holder or Agent
L.B. HALLADAY - GEOLOGIST

The Mining Act Certificate Verifying Report of Work

L.B. HALLADAY

SUITE 702 360 BAY STREET, TORONTO 105, ONTARIO (Post Office Address)

hereby certify:

- 1. That I have a personal and intimate knowledge of the facts set forth in the report of work annexed hereto, having performed the work or witnessed same during and/or after its completion.
2. That the annexed report is true.

Dated FEBRUARY 1, 1972

L.B. Halladay
Signature

Pa. 246376



900

52F16NE8302 22 KABIK LAKE

THE PENALTY FOR MAKING A FALSE STATEMENT IN THIS REPORT AND/OR CERTIFICATE IS \$500

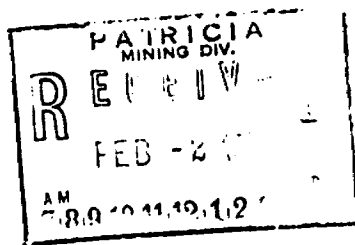
DOMEXPLORATION (CANADA) LIMITED

SCHEDULE OF CLAIMS

<u>Claim No.</u>	<u>Days</u>	<u>Claim No.</u>	<u>Days</u>
PA 246376	19	PA 309165	60
262525	20	309166	60
262526	20	309167	60
		309168	60
262528	20	309201	60
		309202	60
270892	20	309203	60
270893	20	309204	60
270894	20	309205	60
270895	20	309206	60
		309207	60
274833	20	309208	60
274834	20	309209	60
274835	20	309210	60
		309211	60
309158	60	309212	60
309159	60	309213	60
309160	60	309214	80
		309215	82
309162	60		
309163	60	327829	200
309164	60	327830	200
		327831	140

Toronto, Ontario

February 1, 1972



▲

*L. B. Halladay*  
L. B. Halladay

246376

Geology

PICKEREL Twp. Holes 1-8

M-2258

ONTARIO

THE MINING ACT REPORT OF WORK

A separate form is required for each type of work to be recorded.

#31

To the Recorder of ..... PATRICIA ..... Mining Division

I, DOME EXPLORATION (CANADA) LIMITED A21304

name of Recorded Holder Miner's Licence

SUITE 702 360 BAY STREET TORONTO 105 ONTARIO

Post Office Address

do hereby report the performance of ..... 3278 ..... days of Diamond Drilling

not before reported to be applied on the following contiguous claims

Claim No. Days Claim No. Days Claim No. Days

.....

.....

..... See Attached Schedule .....

.....

.....

.....

..... PA246376, 274833, 262525, 274835 .....

All the work was performed on Mining Claim (s) ↑

(In the case of geological and/or geophysical survey (s) where more than 18 claims are involved attach a schedule)

READ CAREFULLY: THE FOLLOWING INFORMATION IS REQUIRED BY THE MINING RECORDER.

For Manual Work, Stripping or Opening up of Mines, Sinking Shafts or Other Actual Mining Operations - Names and addresses of the men who performed the work and the dates and hours of their employment.

For Diamond and other Core Drilling - Footage, No. and angle of holes and diameter of core. Name and address of owner or operator of drill. Dates when drilling was done. Signed core log and sketch in duplicate.

For Compressed Air or Other Power Driven or Mechanical Equipment Type of drill or equipment. Names and addresses of men engaged in operating equipment and the dates and hours of their employment.

For Power Stripping - Type of equipment. Name and address of owner or operator. Amount expended. Dates on which work was done. Proof of actual cost must be submitted within 30 days of recording.

With each of the above types of work sketches are required to show the location and extent of the work in relation to the nearest claim post. In the case of diamond or other core drilling the sketch must be submitted in duplicate.

For Geological and Geophysical Survey - The names and addresses of men employed as well as dates. Type of instrument used in the case of geophysical survey. Reports and maps in duplicate must be filed with the Minister within 60 days of recording.

For Land Survey - the name and address of Ontario Land surveyor.

The Required Information is as Follows: (Attach a list if this space is insufficient)

Date ..... FEBRUARY 1, 1972 .....

Signature of Recorded Holder or Agent L.B. Halladay - Geologist

The Mining Act Certificate Verifying Report of Work

I, L.B. HALLADAY

SUITE 702 360 BAY STREET TORONTO 105 ONTARIO

(Post Office Address)

hereby certify:

1. That I have a personal and intimate knowledge of the facts set forth in the report of work annexed hereto, having performed the work or witnessed same during and/or after its completion.

2. That the annexed report is true.

Dated FEBRUARY 1, 19 72

PATRICIA MINING DIV. RECEIVED

Signature Pa-246376

THE PENALTY FOR MAKING A FALSE STATEMENT IN THIS REPORT AND/OR CERTIFICATE IS \$500. OR SIX MONTHS IMPRISONMENT OR BOTH

DOMEXPLORATION (CANADA) LIMITED

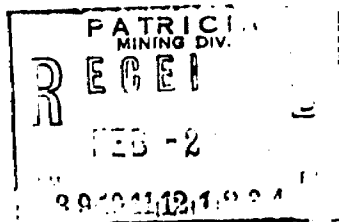
SCHEDULE OF CLAIMS

<u>Claim No.</u>	<u>Days</u>	<u>Claim No.</u>	<u>Days</u>
PA 246376	120	PA 309163	80
262525	120	309164	80
262526	120	309165	80
262528	120	309166	80
270892	120	309167	80
270893	120	309168	80
270894	120	309201	80
270895	120	309202	80
274833	120	309203	80
274834	120	309204	80
274835	120	309205	80
309158	80	309206	80
309159	80	309207	80
309160	80	309208	80
309162	80	309209	80
		309210	80
		309211	80
		309212	80
		309213	80
		309214	60
		309215	58

Toronto, Ontario

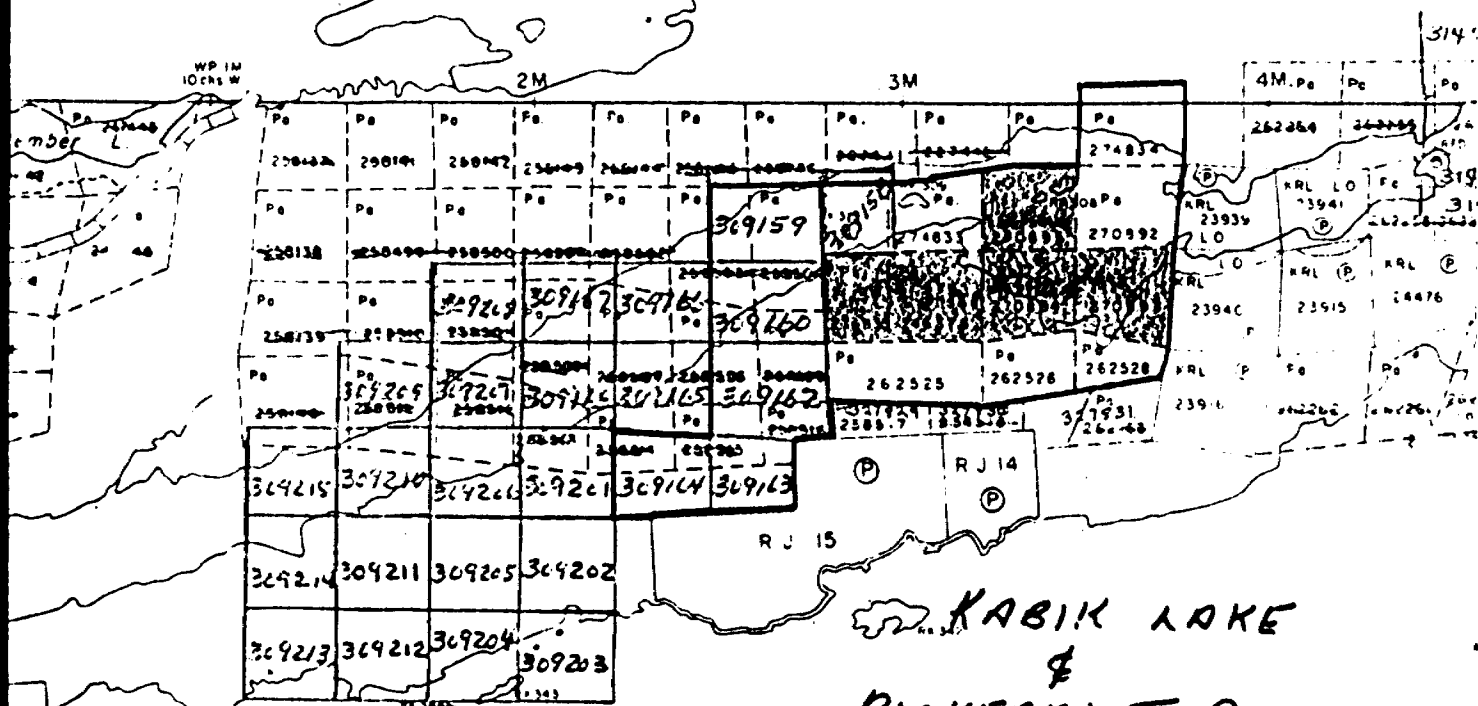
February 1, 1972

*L.B. Halladay*  
L.B. Halladay



JORDAN TWP. M. 2245

FOR-STATUS REFER TO TWP. PLAN



KABIK LAKE  
&  
PICKEREL TWP.

M-2259

Lake

1" = 40 CHAINS

Minnitoki

R# 355

R# 352

R# 350

R# 358

R# 360

SV 110

R# 345

R# 346

R# 348

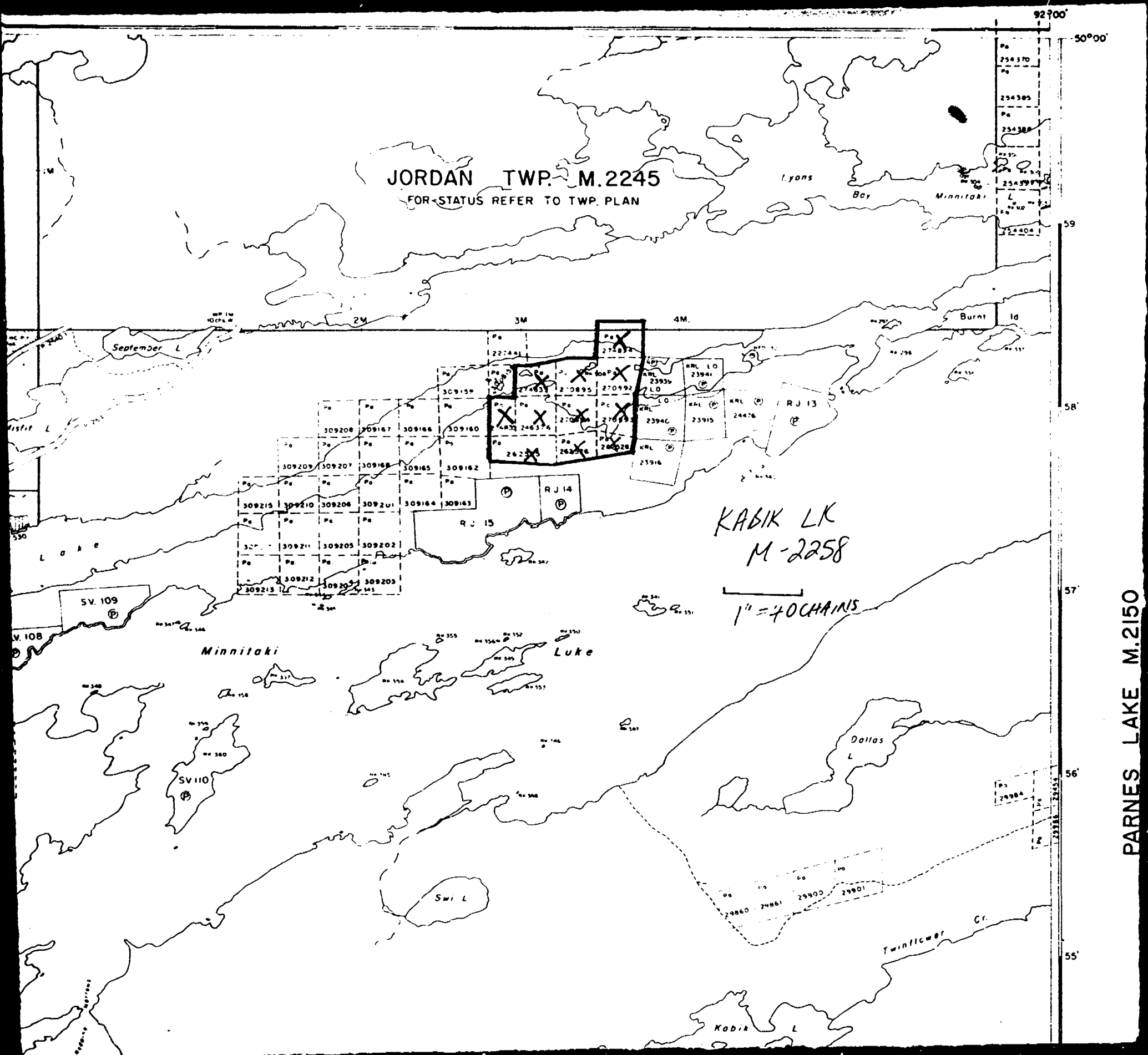
Swi L

JORDAN TWP. M. 2245  
FOR STATUS REFER TO TWP. PLAN

KABIK LK  
M-2258

1" = 40 CHAINS

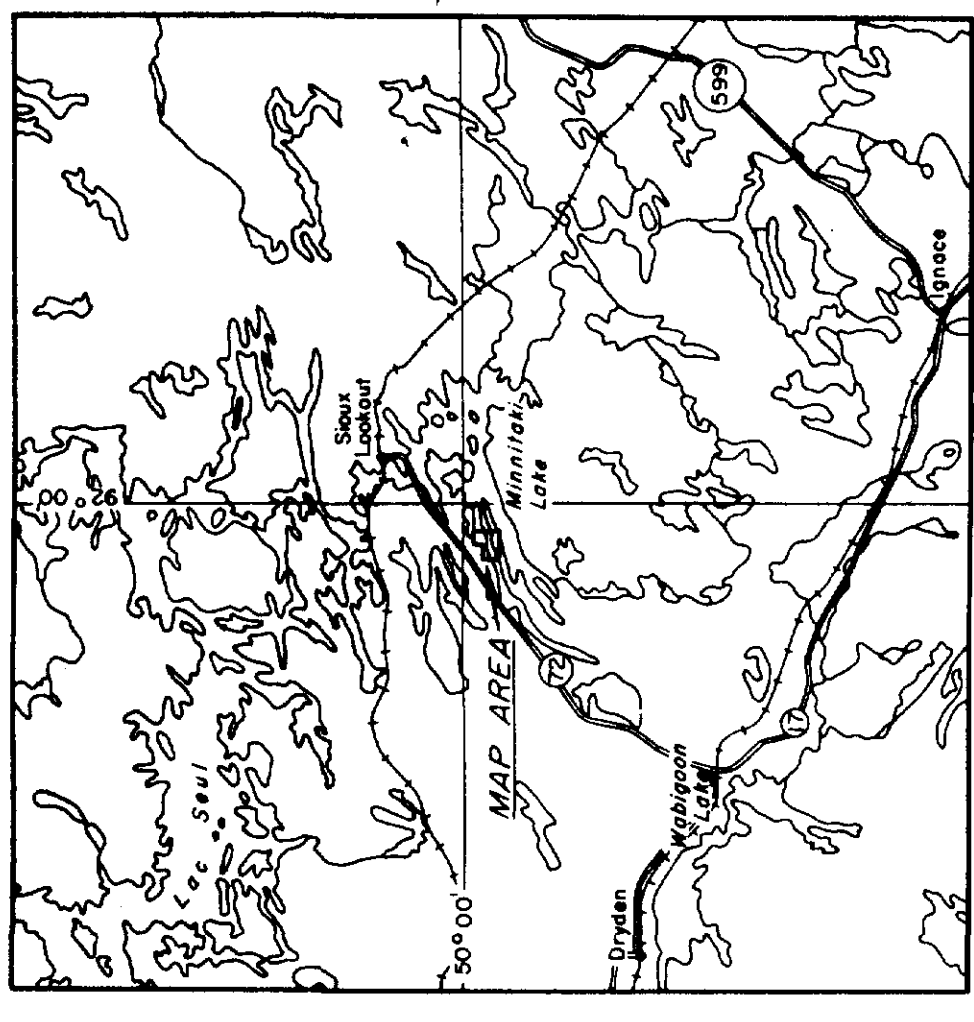
PARNES LAKE M. 2150



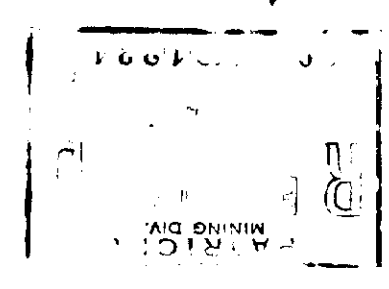
FOR ADDITIONAL  
INFORMATION

SEE MAPS:

52 F/16 NE-0017 # 1, 2

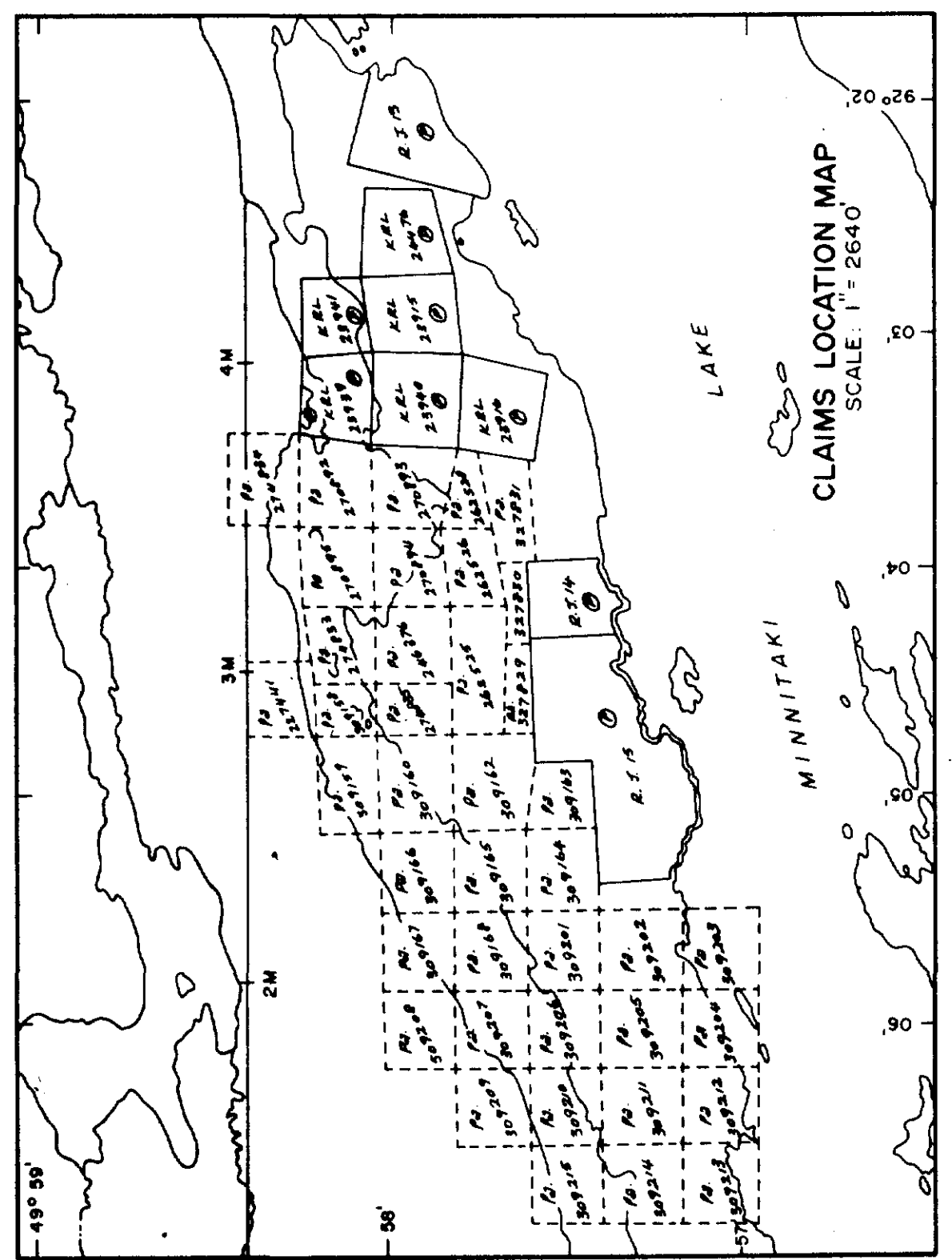
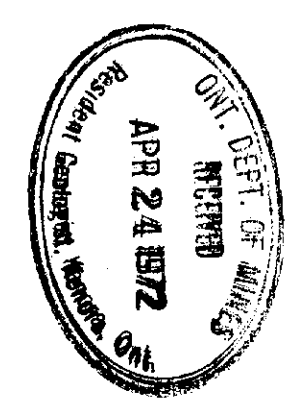


LOCATION MAP  
SCALE 1" = 16 MILES

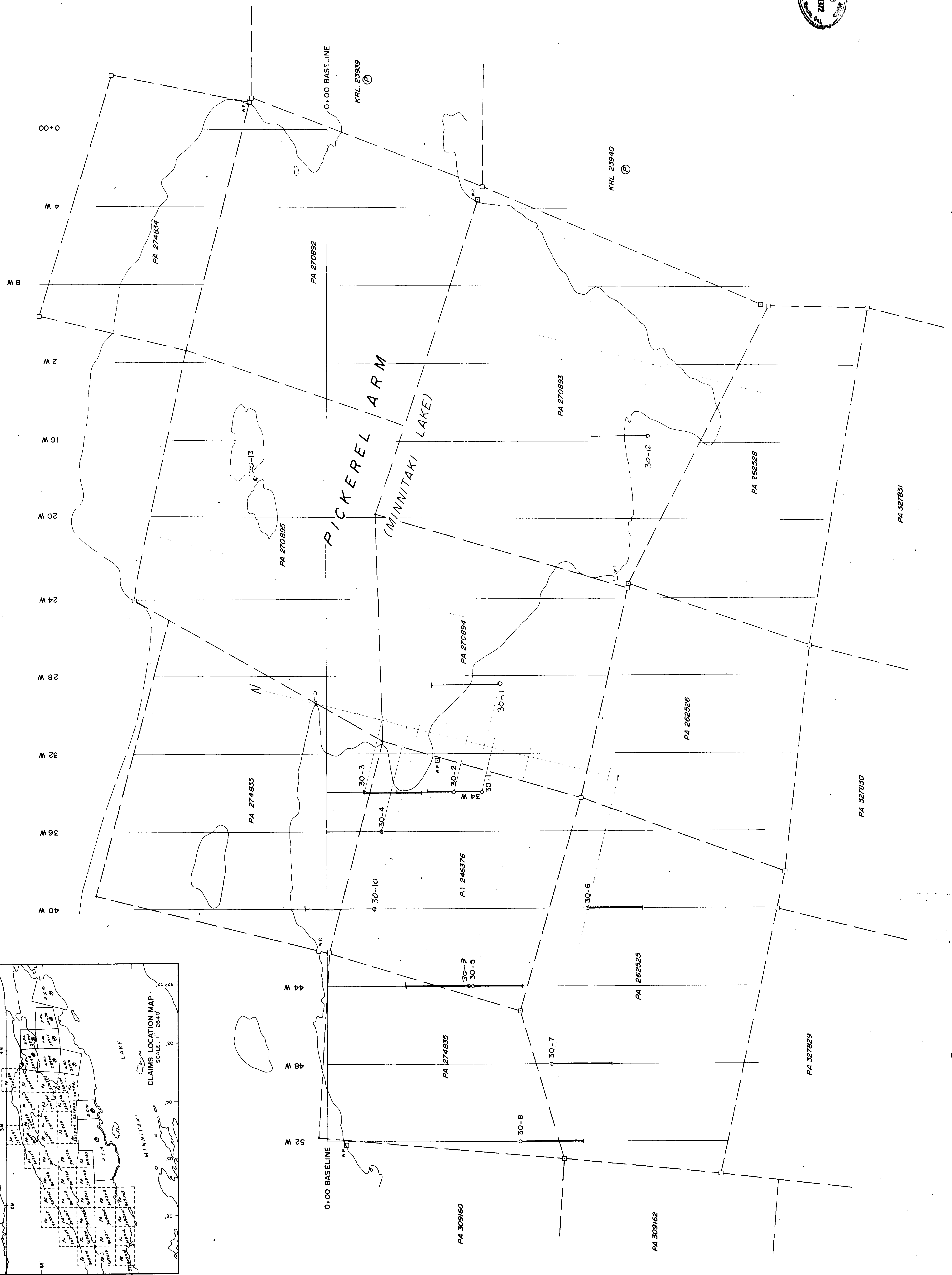


*Rep # 31*  
*Nativa L.S. Halliday*

DOME EXPLORATION (CANADA) LIMITED			
PROJECT No: 30 MINNITAKI LAKE AREA, ONTARIO			
MCCOMBIE OPTION DRILL HOLE PLAN (30-1 TO 30-8)			
SCALE	DATE	BY	DWG. No.
1" = 200'	NOV. 1971	L.B.H.	52-F-16
			DRAWN BY
			ELM.



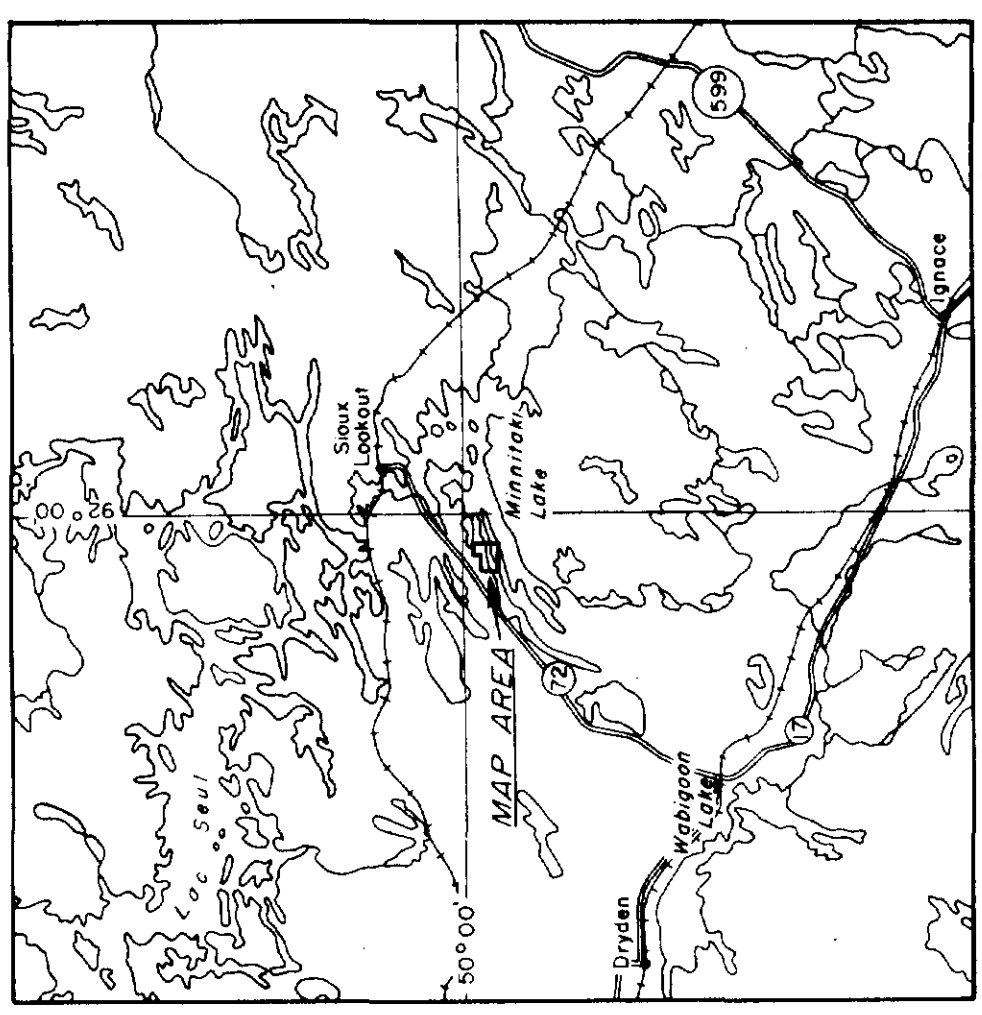
CLAIMS LOCATION MAP  
SCALE 1" = 2640'



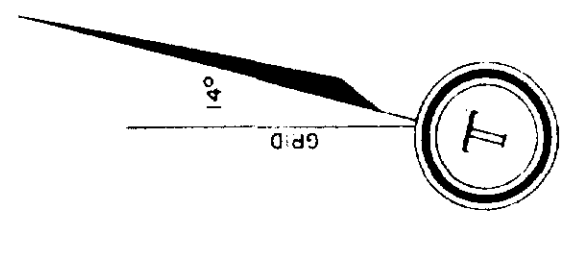
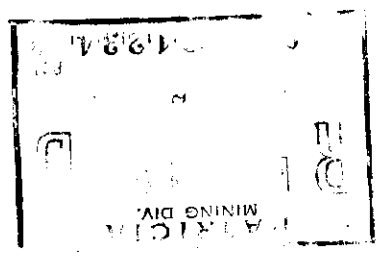
52F/16NE-007, #1





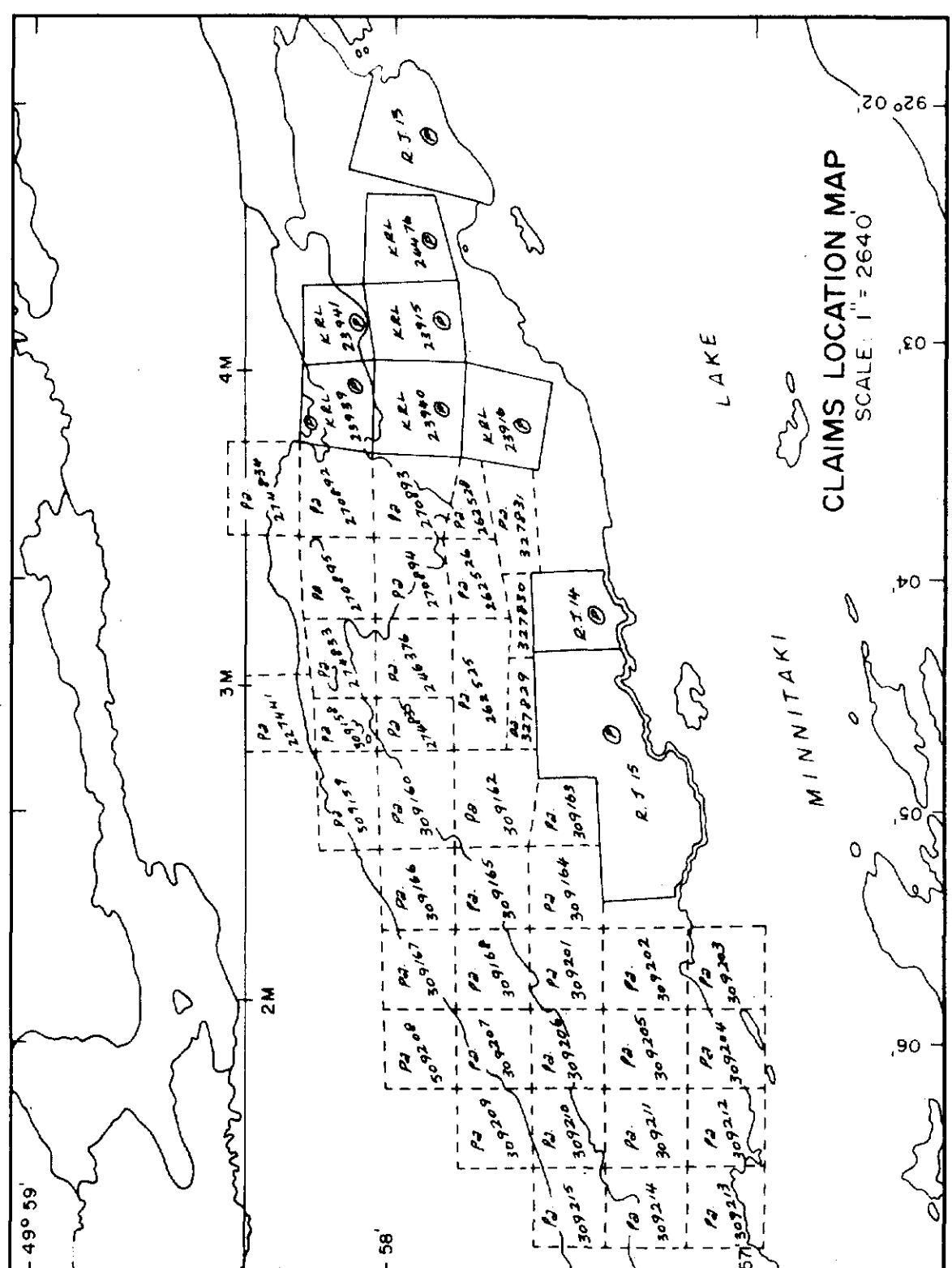
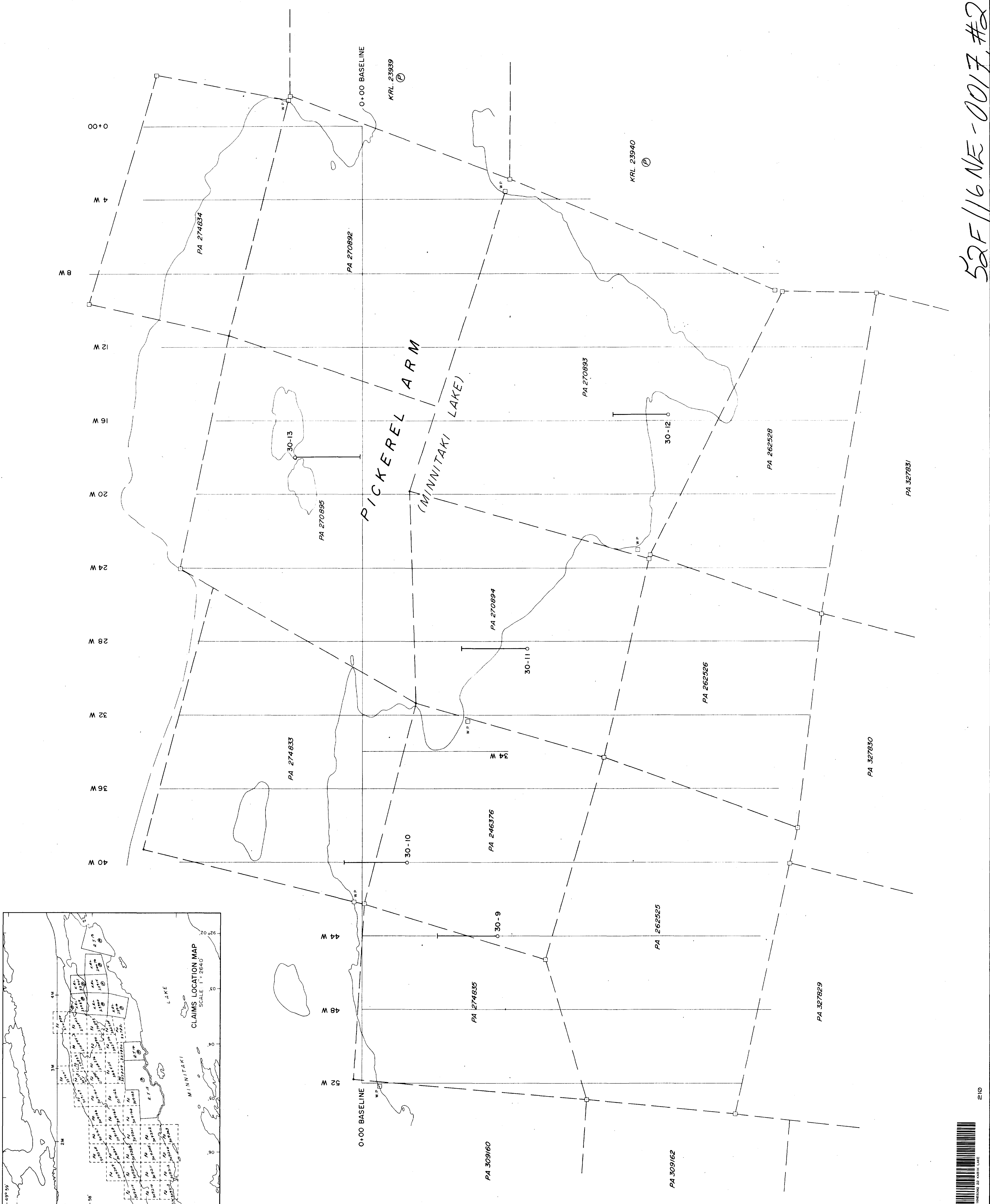


LOCATION MAP  
SCALE 1" = 16 MILES



Rep. #30  
Minnitaki Lake

DOME EXPLORATION (CANADA) LIMITED			
PROJECT No. 30 MINNITAKI LAKE AREA, ONTARIO			
MCCOMBIE OPTION DRILL HOLE PLAN (30-9 TO 30-13)			
SCALE	DATE	BY	N.T.S. No.
1" = 200'	NOV 1971	L.B.H.	52-F-16
			DRAWN BY
			G.L.W.



CLAIMS LOCATION MAP  
SCALE 1" = 2540'

52F/16NE-0017, #2

