

52 F/16 NE-0037-B

LOAD: Com 80/35mm

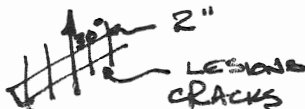
QUYTA GOLD MINES LTD.

PA. 42

THERE ARE COMPLEMENTARY FRACTURES ALONG STRIKE DIRECTION
NOT WELL DEVELOPED.

ONE OF 50° FRACTURES SHOWS DIAGONAL ? CRACKS.

THAT STRIKE N-S DIP WENT FLAT BY ? @ 30°.



DUPLICATE COPY
POOR QUALITY ORIGINAL
TO FOLLOW

ALTERATION SILICIAN ?

SOME CARB IN SHOWING.

SOME ? - BLOCK(?) NOTED IN FRACTURE.

WEATHERS LIGHT GREY FOR TWO INCHES.

PORPH. EXPOSED FOR 400-500 FT. STRIKE DISTANCE 3000 FT

VARIED IN ? - SMALL DIKES OFF SIDE.

QTZ. FRACTURES ALONG THE STRIKE.

5000 FT / QTZ. @ 5400 + 1600.

#1 TRENCH EXPOSES SOME LAVI PORPH BUT PREDOMIN. FRACTURES

ALONG STRIKE 2-3' WIDE (ST 50° DIP W 0° ?)

SOME V.G. IN ?

LOTS OF TERMAINE ? HERE.

SOME ? FRACTURES @ 30°

25 FT TO NE E OF #2 SH W

PORPH SPLITS INTO

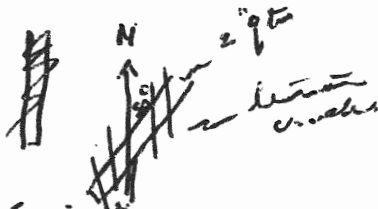
WITH GREENSTONE HORNE (BENT ?) IN STRINGERS

30' WIDE.

Suyta Gold Mines Ltd

P.A. 42

Shore are complementary across
fractures along strike direction.
not well developed.
One of 50° fractures shows
diagonal tension cracks
slab strike N-S dip west flat
by @ 30°



Abundant solution marks
near core in shewing

Some laminae & blocks (shards)
noted on fractures

Weathered light gray for 2 inches

Depth exposed for ~~500~~ 400-500
ft strike distance 3000 ft
more or north & small dips
off side

Other fractures along the strike
3000 ft (dip @ 50° & 160°)

01. Fracture appears near core &
people but fracture fractures
along strike 2-3' wide. (57 50° dip west)
Some V.S. in flow
Lots of laminae here
Some diag fractures @ 30°

25 ft to N.E. of @ the above
pigeon splits into 2 layers
with granitic lava in it.
30' level

Quinta Gold Mines Ltd.

P.A.H.R.

Just well sharp intrusive contact.

South wall of porph. good
w. g. amyg. bubbles.

Frequency of x form less than
Newland. Only small ones
every 2-3 ft.

Indication of consolidation of
x fractures at S side of dike

One 3 ft. qtz. str. 100% at N 40°
zone of carb at one foot on
south side of vein. i.e. leaded
rock (carb).

PORPH SHOW IN DIORITE.
~~JUST WEST~~ ~~WEST~~ of
#1 POST 10442 ON CLAIM MAP

(GRANITE?)

? WALL SHARP INTRUSIVE CONTACT
SOUTH WALL OF PORPH. GOOD.
v.g. ? ANDES.

FREQUENCY OF X FORM. LESS THAN
NEWLAND ONLY SMALL ONES
EVERY 2-3 FT.

INDICATION OF CONSOLIDATION AT
X FRACTURES AT S SIDE OF DIKE.

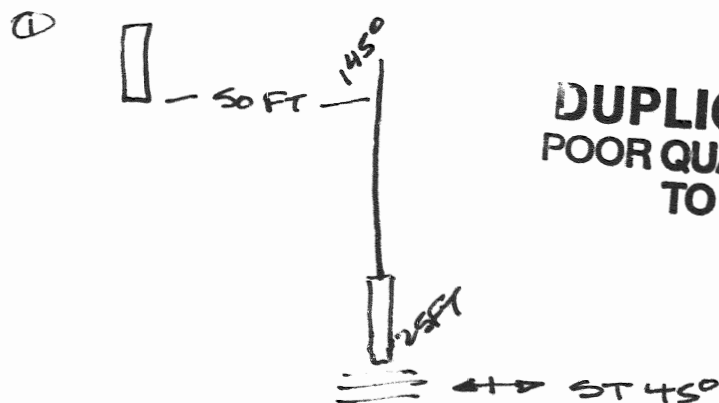
ONE 3 FT. QTZ. ? STR. 100% AT N 40°
ZONE OF CARB AT ONE FOOT ON WALLED
SIDE OF VEIN i.e. LEADED ROCK (CARB)

PORPH SHOW IN DIORITE.
#1 POST 10442 ON CLAIM MAP.

QUYTA

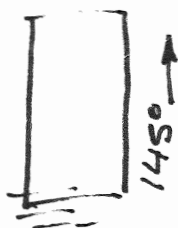
OCT 25/50

TWO CROSS TRENCHES 100 FT APART 25' LONG
STRIKING 145° OFFSET.



DUPLICATE COPY
POOR QUALITY ORIGINAL
TO FOLLOW

2 EXP



CROSS FRACTURES ST. 30° DIP W 450 PREDOMINATE
1-3" WIDE SPACED 3'4 FT. MILKY QRTZ. SOME CARB
+ ? PYRITE IN WALLS FOR 3" 4". PYRITE SPARSE
V.G. OCCURRANCE ? OF CROSS FRACTURES.

THE CAPRYL ROCK IS VERY GOOD DARK GREEN
TO GREY BLACK PORPH WITH WHITE ?
? CRYST $\frac{1}{4}$ "

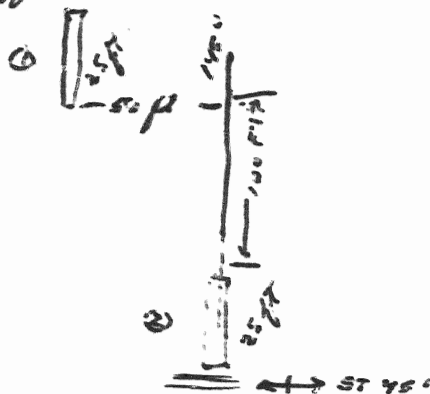
Quyta Gold P.A. 42
Mines Ltd

Quyta Gold P.A. 42
 Mines Ltd.

QUYTA.

OCT 25/5.

two cross benches 100 ft
 apart 25' long strike 145°
 off rd.

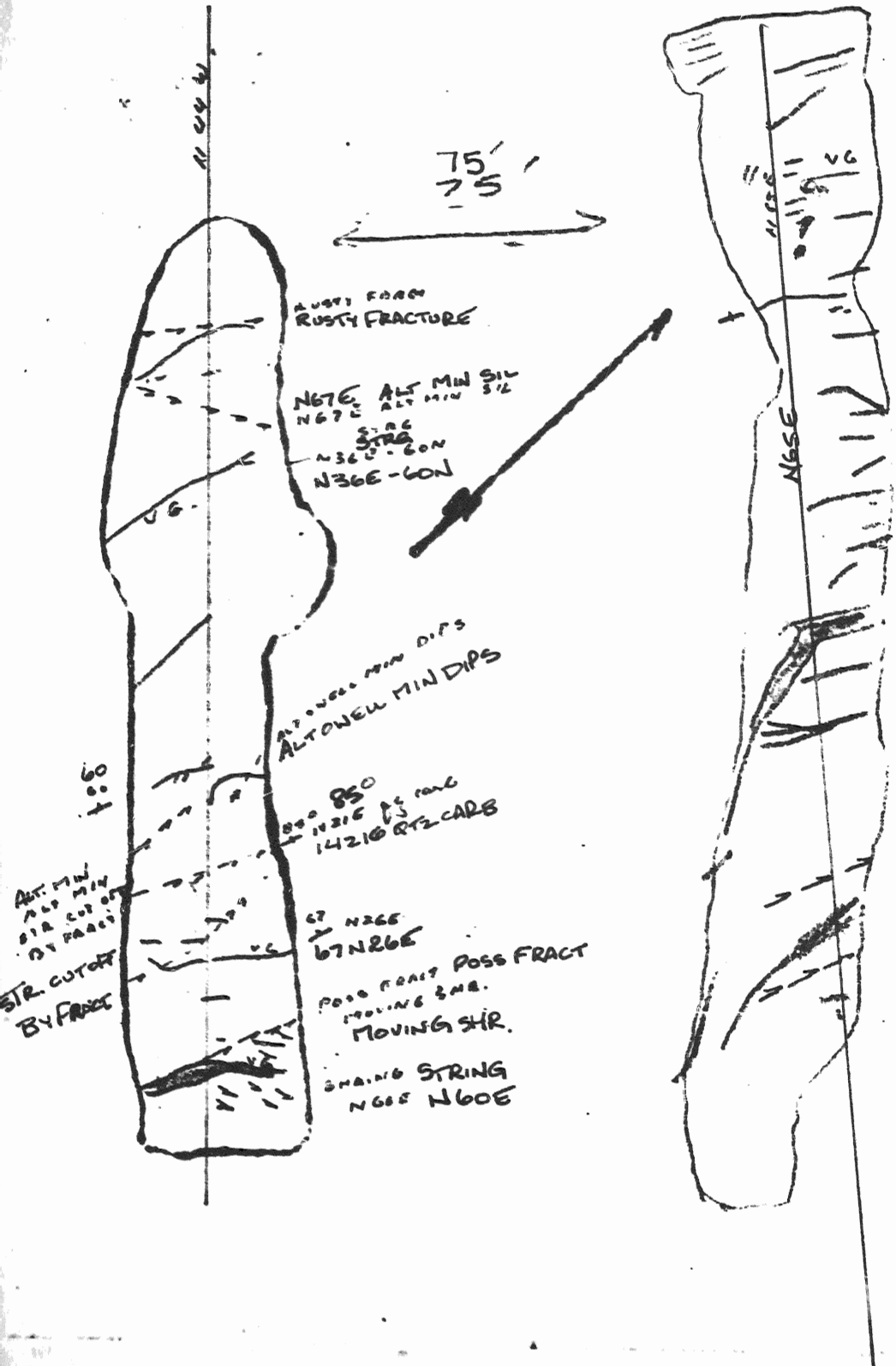


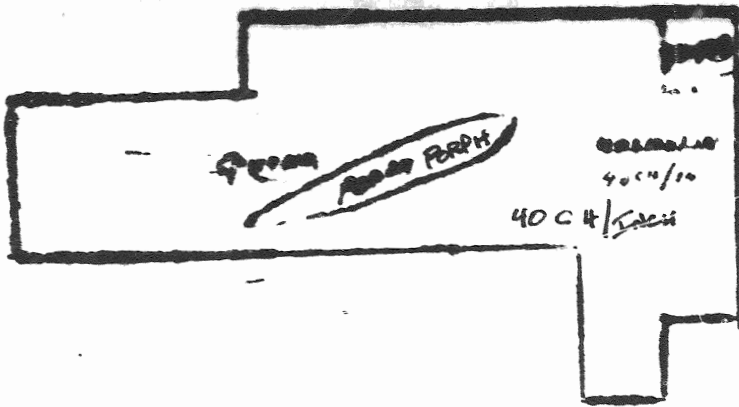
#2 up



Cross fractures ST 50° Dip W 45°
 predominate 1-3" wide spaced
 3' 4 ft. probably of same cause
 + white quartzite walls for
 3" 4". Calc quartz a pair
 v.g. occur in some of cross
 fractures.
 The country rock is a mix of
 dk green to grey basalt
 purple with white calc
 plumbcryst 1/4"

QUYTA





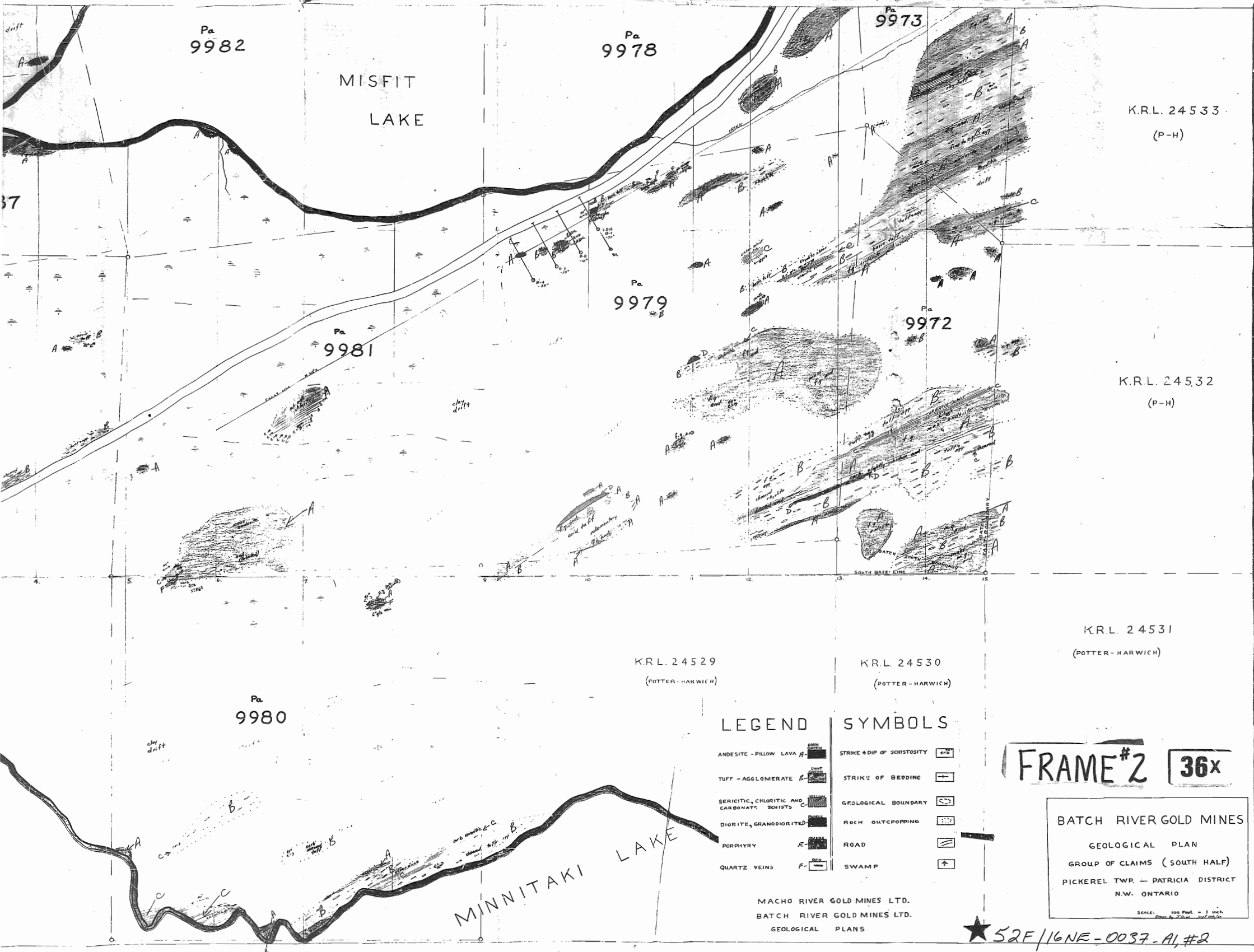
WAST
GAST
GRST

MORAN
PORPH

GAST
GRST



400 FT = 1 IN
400 FT = 1 INCH



K.R.L. 24533
(P-H)

K.R.L. 24532
(P-H)

K.R.L. 24531
(POTTER-HARWICH)

K.R.L. 24529
(POTTER-HARWICH)

K.R.L. 24530
(POTTER-HARWICH)

LEGEND

- ANDESITE - PILLOW LAVA A
- TUFF - AGGLOMERATE B
- SERICITIC, CHLORITIC AND CARBONATE SCHISTS C
- DIORITE, GRANODIORITE D
- PORPHYRY E
- QUARTZ VEINS F

SYMBOLS

- STRIKE & DIP OF SCHISTOSITY
- STRIKE OF BEDDING
- GEOLOGICAL BOUNDARY
- ROCK OUTCROPPING
- ROAD
- SWAMP

FRAME #2 36x

BATCH RIVER GOLD MINES
GEOLOGICAL PLAN
GROUP OF CLAIMS (SOUTH HALF)
PICKEREL TWP. - PATRICIA DISTRICT
N.W. ONTARIO

MACHO RIVER GOLD MINES LTD.
BATCH RIVER GOLD MINES LTD.
GEOLOGICAL PLANS

★ 52F/16NE-0037-A1, #2