



52F16NE8582 52F16NE0014A1 KABIK LAKE

010

AREA OF KABIK LAKE      REPORT #11

This file contains work performed by El Pen Rey Mines on claim:

PA. 10068

Hole #P.R.2; 531' August, 1950

Hole #P.R.3; 190' August, 1950

—————      —————  
2 DH 721 FT

CHAMBERLIN MANAGEMENT CORP., LTD.—PROPERTY EL PEN REY MINES LTD., Pickeral Twp., Ont.

DIPS: COLLAR 0-40°

BEARING N 25 W ELEVATION \_\_\_\_\_

EXPLORATION DIAMOND DRILL RECORD

DATE BEGUN Aug. 12 1950 DATE FINISHED Aug. 13 1950

Location:-

Claim Pa. 19068  
 850 feet east, 250 ft. south  
 SECTION \_\_\_\_\_  
 from N.W. corner.  
 LATITUDE 12 ft. N 25 W from  
 DEPARTURE collar 2P.R.

HOLE NO. 3 P.R.

SHEET NO. \_\_\_\_\_

DEPTH 190

MAG LTD

CORE FOOTAGE		DESCRIPTION		REMARKS	SAMPLE		OUNCES GOLD	VALUE \$35.00/OZ	AVERAGE
FROM	TO	ROCK	COLOUR		NUMBER	FEET			
0	4			Casing					
4	18.4	pyroclastic breccias		acidic; silicified; rather massive, though locally sheared, sericitic					
18.4	63.3	pyroclastic breccias		more basic; locally porphyritic; rather sheared, carbonated, chloritic; barren quartz carbonate fillings at 31.8 and 33.7; minor local pyrite					
63.3	103	pyroclastic breccias		porphyritic; acidic to basic; sheared; few barren quartz-carbonate stringers; slight local pyrite					
103	190	agglomerates		some tuffs and porphyritic breccias; rather acidic, local basic sections; rather broken and sheared; slight pyrite Lost Core:- 104-105; 110-111; 116.5-117; 123-123.7; 128.5-129; 157-157.8; 161-162; 176.5-177					
				END—190					
				N.B. Hole drilled to complete assessment work after 2 P. R. was abandoned.					

CHAMBERLIN MANAGEMENT CORP., LTD.—PROPERTY El Pen Rey Mines Limited, Pickeral Twp., Ont.

DIPS: COLLAR \_\_\_\_\_

BEARING \_\_\_\_\_ ELEVATION \_\_\_\_\_

EXPLORATION DIAMOND DRILL RECORD

DATE BEGUN \_\_\_\_\_ DATE FINISHED \_\_\_\_\_

SECTION \_\_\_\_\_

LATITUDE \_\_\_\_\_

DEPARTURE \_\_\_\_\_

HOLE NO. 2 P. P.

SHEET NO. 3

DEPTH \_\_\_\_\_

MAN LTD

CORE FOOTAGE		DESCRIPTION		REMARKS	SAMPLE		OUNCES GOLD	VALUE \$35.00/OZ.	AVERAGE
FROM	TO	ROCK	COLOUR		NUMBER	FEET			
387	446.5	slaty greywacke		and slates; some lost core sections					
446.5	521.3	greywacke		f. to m.g.; with sections of thin bedded slates					
521.3	531	slates		and slaty greywacke; rather broken and sheared Lost Core:- 523 - 524; 525 - 526.5; 527.5 - 528.5; 529 - 530;					
		End - 531							
<p>N.B.:— Hole entered open caving seam, with sand backing up hole, at 531. Hole abandoned, as evidently in fissure open under Pickeral Arm Lake, and no use cementing.</p>									

CHAMBERLIN MANAGEMENT CORP., LTD.—PROPERTY El Pen Rey Mines Ltd., Pickeral Twp., Ont.

DIPS: COLLAR \_\_\_\_\_

BEARING \_\_\_\_\_ ELEVATION \_\_\_\_\_

EXPLORATION DIAMOND DRILL RECORD

DATE BEGUN \_\_\_\_\_ DATE FINISHED \_\_\_\_\_

SECTION \_\_\_\_\_

LATITUDE \_\_\_\_\_

DEPARTURE \_\_\_\_\_

HOLE NO. 2 P. B.

SHEET NO. 2

DEPTH \_\_\_\_\_

NAR LTR

CORE FOOTAGE		DESCRIPTION		REMARKS	SAMPLE		OUNCES GOLD	VALUE \$35.00/OZ	AVERAGE
FROM	TO	ROCK	COLOUR		NUMBER	FEET			
1/4	170.8	tuffs?		or in part slaty greywacke?; thin bedded, sericitic to slaty; well sheared; local heavy pyrite, some pyrrhotite, usually as banding; locally highly broken Lost Core:- 157 - 158; 161 - 162; 163 - 164; 167 - 167.5; 168 - 169					
170.8	212.5	iron formation		banded chert, quartz, pyrite, pyrrhotite; local disseminated pyrite					
212.5	217.7	iron formation		as above	4562	5.2	.05		
217.7	222.9	iron formation		local massive sections pyrite and pyrrhotite	4563	5.2	nil		
222.9	247.5	slaty greywacke		and slates; thin bedded, with pyrite streaks, to 228; Lost Core:- 223 - 223.8					
247.5	387	greywacke		f.g. with interbeds of slaty greywacke, slate, and some conglomerate; tops south, bedding 75 - 80° to core: more n.g., with lesser slaty sections, from 340; few very local barren quartz stringers					

CHAMBERLIN MANAGEMENT CORP., LTD.—PROPERTY EL. PEN RAY MINES LTD., Pickeral Twp. Ont.

DIPS: COLLAR 0 - 45°, 480 - 14°

BEARING S 25 E ELEVATION \_\_\_\_\_

EXPLORATION DIAMOND DRILL RECORD

DATE BEGUN Aug. 8 1950 DATE FINISHED Aug. 12 1950

Location:-

Claim Pa. 10068

Approx. 850 feet east, 250 ft.

~~South~~ south, from N.W. corner HOLE NO. 23

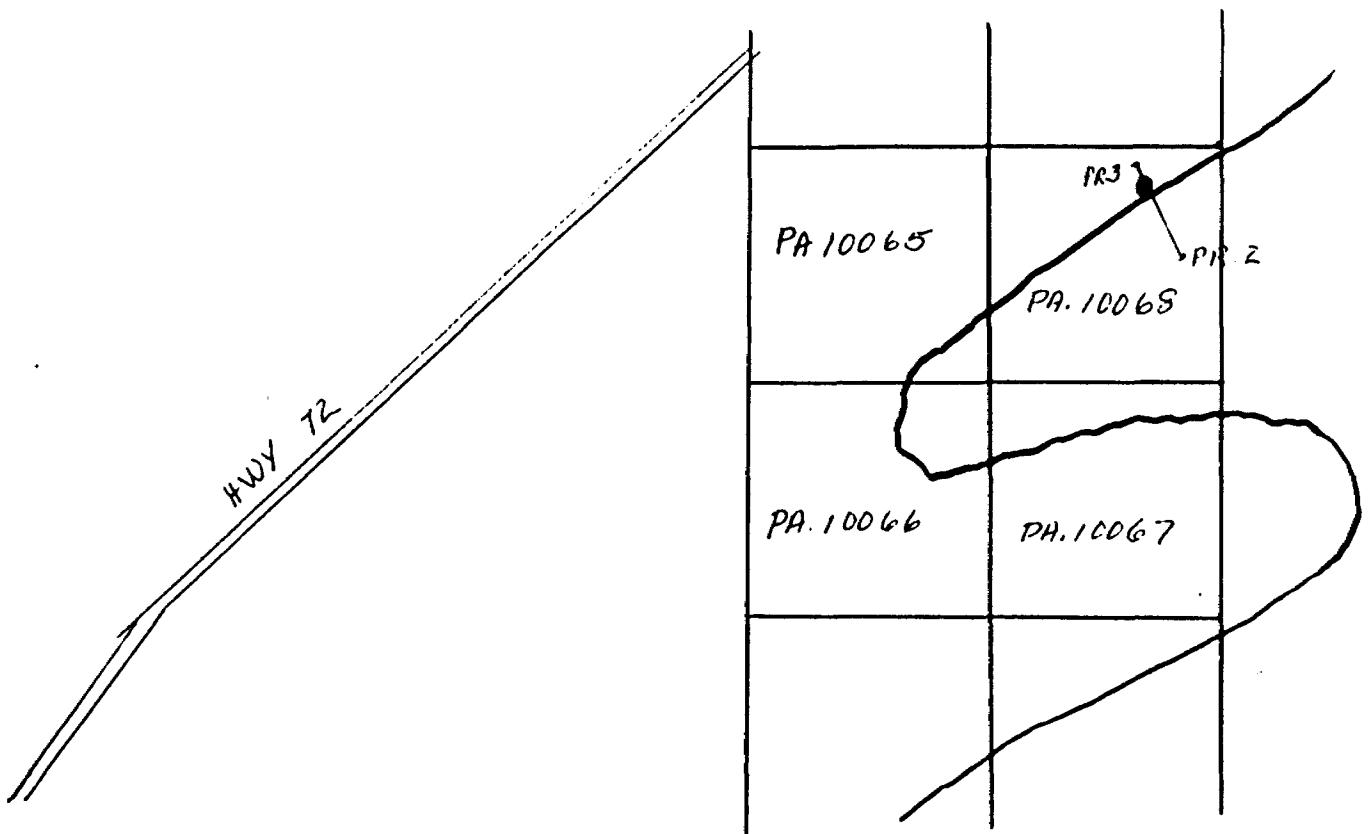
#post 40 feet from shore,

LATITUDE Pickeral Arm SHEET NO. \_\_\_\_\_

DEPARTURE \_\_\_\_\_ DEPTH 531

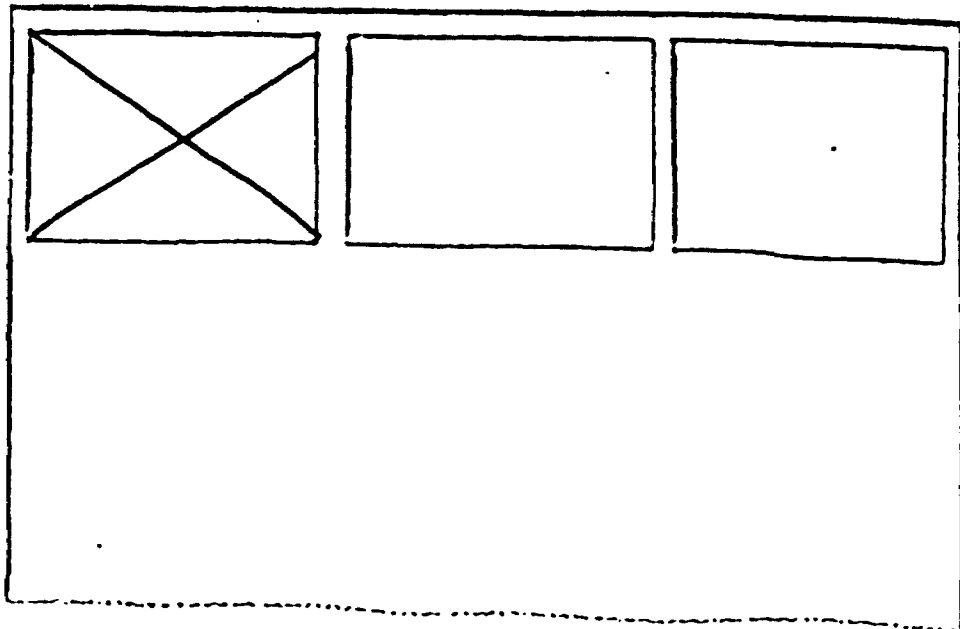
M&G LTD

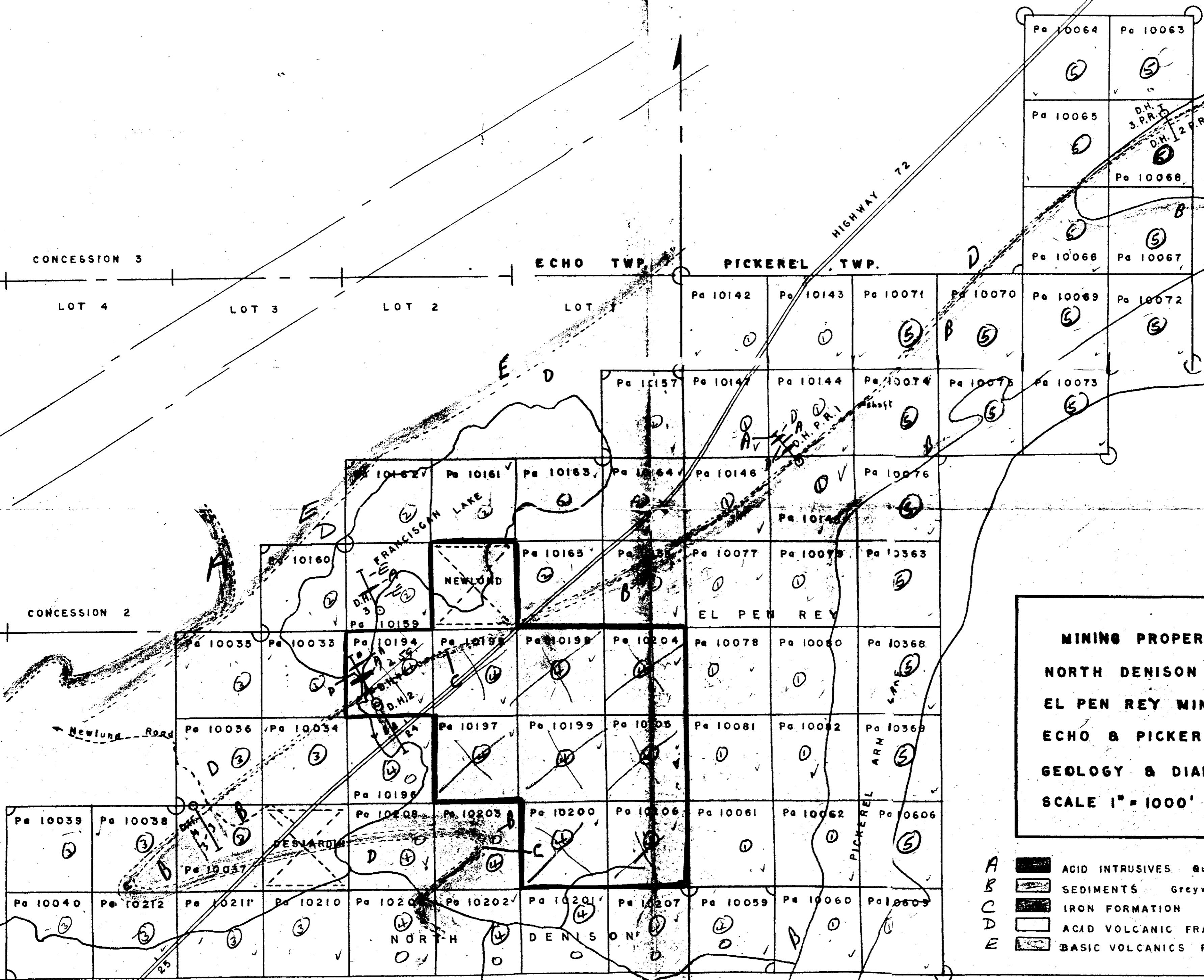
CORE FOOTAGE		DESCRIPTION		REMARKS	SAMPLE		OUNCES GOLD	VALUE \$38.00/OZ.
FROM	TO	ROCK	COLOUR		NUMBER	FEET		
0	5			Casing				
5	43.2	pyroclastic breccia		porphyritic pyroclastic breccias mainly, some possible tuffs; acidic; leucoxene spotting; possible south facing, steep north dips; generally weakly sheared, and sericitic; minor quartz stringers				
43.2	43.8	quartz		barren quartz vein, heavy tourmaline				
43.8	101.4	pyroclastic breccias		as above; becoming more broken and sheared from about 69 feet.				
101.4	144	pyroclastic breccia		Lost Core:- 88 - 93; 94 - 94.5; 97 - 101.4 porphyritic; acidic; may be in part intrusive porphyry; in part fairly massive, but locally sheared, sericitic, broken, and becoming highly so. Lost Core:- 109 - 110; 112.5 - 113.5				



SEE ACCOMPANYING  
MAP(S) IDENTIFIED AS  
52F/16NE-0014-A1#1

LOCATED IN THE MAP  
CHANNEL IN THE FOLLOWING  
SEQUENCE (X)





**MINING PROPERTIES OF**  
**NORTH DENISON MINES LIMITED**  
**EL PEN REY MINES LIMITED**  
**ECHO & PICKEREL TWPS., ONT.**  
**GEOLOGY & DIAMOND DRILL HOLES**  
**SCALE 1" = 1000'**      **SEPTEMBER, 1950**

*George J. ...*

- A  ACID INTRUSIVES    Quartz porphyry mainly
- B  SEDIMENTS    Greywacke, etc.
- C  IRON FORMATION
- D  ACID VOLCANIC FRAGMENTALS
- E  BASIC VOLCANICS FLOWS



52F16 NE-0014-A1#1