



52F16NE8584 52F16NE0015 KABIK LAKE

010

AREA OF KABIK LAKE REPORT #13

This file contains work performed by Eaglelund Mines on claims:

PA.10254	Hole #J.P.1; 298.0	Sept., 1950
	J.P.2; 261.0	Sept., 1950
	J.P.3; 290.0	Sept., 1950
	J.P.4; 285.0	Oct., 1950
	J.P.8; 305.0	Oct., 1950
	J.P.9; 177.0	Oct., 1950
PA.10246	Hole #J.P.5; 231.0	Oct., 1950
	J.P.6; 228.0	Oct., 1950
	J.P.7; 245.0	Oct., 1950
	<hr/>	
TOTAL:	9 DH	2320 FT

PROPERTY EAGLELUND MINES LIMITED

9-6-52

HOLE NUMBER J.P. #1

SHEET NUMBER 1

DIAMOND DRILL RECORD

SECTION FROM 0.0 TO 81.6

LOCATION: LAT
 DEP.
 ELEVATION OF COLLAR 75' NW 0/30
 DATUM
 DIRECTION AT START: BEARING S 45° E
 DIP -50° - 55°

STARTED September 22nd/50 at 8.00 P.M.
 COMPLETED September 24th/50 at 11.00 A.M.
 ULTIMATE DEPTH 298.0'
 PROPOSED DEPTH 300'

DEPTH FEET	FORMATION	SAMPLE NO.	WIDTH OF SAMPLE	GOLD g	BLUDGE GOLD g
0.0- 8.0	Casing				
8.0- 28.0	Chloritic andesite (schistose) schistosity at 60° to core at 19.8' - 1/2" white qtz stringer				
28.0- 34.0	Dark greenish fine grained schistose andesite consid. fine pyrite at 30.3 - 2" greyish alteration Few qtz threads				
34.0- 57.0	Lighter greenish chloritized schist Scattered qtz and carb threads and blebs. Fine threads of of pyrite 46.8 - 1/2" qtz. strg.				
57.5- 81.6	Coarser grained andesite, more massive qtz and carb. blebs. Patches of fine pyrite 74.2 - 2" qtz strg. little Py and some epidote, patches greenish alteration				

NORTHERN MINER PRESS LIMITED, TORONTO-STOCK FORM NO 501 REV 5/44

DRILLED BY

SIGNED

PROPERTY EAGLELUND MINES LIMITED

HOLE NUMBER

SHEET NUMBER 2

DIAMOND DRILL RECORD

SECTION FROM 81.6 TO 114.4

LOCATION: LAT.....
 DEP.....

STARTED

ELEVATION OF COLLAR

COMPLETED

DATUM

ULTIMATE DEPTH

DIRECTION AT START: BEARING.....
 DIP.....

PROPOSED DEPTH

DEPTH FEET	FORMATION	SAMPLE NO.	WIDTH OF SAMPLE	GOLD \$	SLUDGE GOLD \$
81.6-97.4	More schistose chloritic fine grained andesite Scattered qtz threads and blebs.				
97.4-103.4	Massive med. grained dark lava DIKE				
103.4-113.4	Lighter more silicious, gradual alteration (no distinct contact) grano-diorite dike, qtz veins and stringers, sect. of good min Py and Po in qtz and dike				
105.0'	Qtz stringer paralleling hole (2") Good Pyrite in qtz.				
109.8-112.0	70% white qtz. in irreg. strgs. Good Py in qtz and dike	1	2.2'	Tr	
112.0-113.0'	Qtr threads in min. dike (py)	2	1.0'	Nil	
114.5-116.5	Irreg qtz. strgs. 2" max. good Py and Po.	3	2.0'	Nil	
113.0-114.5	Includes 4" white qtz. strg. with fair py. and po in dike material.	4	1.5'	Nil	

NORTHERN MINER PRESS LIMITED, TORONTO-STOCK FORM NO 501 REV 9/44

DRILLED BY

SIGNED

PROPERTY EAGLELUND MINES LIMITED

HOLE NUMBER

SHEET NUMBER 3

DIAMOND DRILL RECORD

SECTION FROM TO

LOCATION: LAT.....
 DEP.....

STARTED

ELEVATION OF COLLAR

COMPLETED

DATUM

ULTIMATE DEPTH

DIRECTION AT START: BEARING

PROPOSED DEPTH

DEPTH FEET	FORMATION	SAMPLE NO.	WIDTH OF SAMPLE	GOLD \$	SLUDGE GOLD \$
103.4-143.4	DIKE				
119.5-121.5	Mineralized dike, two qtz. strgs 1" and 1/2" Fine Py and Po	J.P.5	2.0'	Nil	
121.5-122.5'	6" white qtz. vein strike N - S dip 65° W well min Py and Po a little tourmaline	J.P.6	1.0'	0.24	
122.5-124.0'	2" white qtz. strg. plus qtz. threads fair Py in dike and qtz.	J.P.7	1.5'	Tr.	
126.0'-127.0'	4" white qtz vein well min. Py and little tourmaline	J.P.8	1.0'	Nil	
127.8-130.4	3" and 2" qtz. strgs. good Py. fine & coarse stringers cut at flat angle (down dip)	J.P.9	2.6'	0.04	

NORTHERN MINER PRESS LIMITED, TORONTO-STOCK FORM NO 801 REV 9/44

DRILLED BY

SIGNED

PROPERTY EAGLELUND MINES LIMITED

HOLE NUMBER

SHEET NUMBER 4

SECTION FROM TO

DIAMOND DRILL RECORD

LOCATION: LAT.
 DEP.

STARTED

ELEVATION OF COLLAR

COMPLETED

DATUM

ULTIMATE DEPTH

DIRECTION AT START: BEARING
 DIP

PROPOSED DEPTH

DEPTH FEET	FORMATION	SAMPLE NO.	WIDTH OF SAMPLE	GOLD \$	SLUDGE GOLD \$
103.4-143.4	DIKE				
	130.4-133.4	J.P.10	3.0'	Nil	
	White milky qtz. slight Py				
	Vain appears to be vertical				
	133.4-136.9	J.P.11	3.5	Tr	
	White milky qtz. scattered patches				
	fine Py with good Py at 136.7'				
	136.9-139.9	J.P.12	3.0'	Nil	
	Irreg. qtz. stringers (2" max) and				
	threads. Fair Py in dike & strgs.				
	(Coarse cubes at 139.0')				
	141.2-142.8	J.P.13	1.6'	Tr.	
	60% white qtz. in strgs.				
	Good Py				
143.4-153.0	Highly silicious altered tuff, scattered bands				
	of sulphides, Py.				
153.0-165.0	Med. grained chloritized andesite				
	Few narrow qtz. threads.				

NORTHERN MINER PRESS LIMITED, TORONTO-STOCK FORM NO 501 REV 8/44

DRILLED BY

SIGNED

PROPERTY EAGLELUND MINES LIMITED

HOLE NUMBER

SHEET NUMBER 5

DIAMOND DRILL RECORD

SECTION FROM TO

LOCATION: LAT.
 DEP.

STARTED

ELEVATION OF COLLAR

COMPLETED

DATUM

ULTIMATE DEPTH

DIRECTION AT START: BEARING
 DIP

PROPOSED DEPTH

DEPTH FEET	FORMATION	SAMPLE No.	WIDTH OF SAMPLE	GOLD \$	BLVDGE GOLD \$		
165.0-173.5	Fine grained chloritic schistose andesite, scattered qtz. and carb threads						
173.5-189.0	Lighter green schistose fine grained andesite scattered qtz. threads.						
189.0-207.0	Massive f.g. andesite						
207.0-252.2	Chloritic schist, few qtz. and carb threads scattered Py. Numerous qtz. blebs and irreg. qtz. threads from 234.0						
	Fine straks of Py.						
	249.5-251.1	J.P.14	1.6	Nil			
	40% white glassy qtz. bal. chloritic schist. Fair Py. in qtz.						
252.2-266.0	Sheared and agglom. scattered qtz. threads and blebs. patches of sulphides						
266.0-274.0	Fine grained andesite.						

NORTHERN MINER PRESS LIMITED, TORONTO - STOCK FORM NO 501 REV 9-44

DRILLED BY

SIGNED

PROPERTY EAGLELUND MINES LIMITED

HOLE NUMBER

SHEET NUMBER 6

DIAMOND DRILL RECORD

SECTION FROM TO

LOCATION: LAT.....
 DEP.....

STARTED

ELEVATION OF COLLAR

COMPLETED

DATUM

ULTIMATE DEPTH

DIRECTION AT START: BEARING.....
 DIP.....

PROPOSED DEPTH

DEPTH FEET	FORMATION	SAMPLE NO.	WIDTH OF SAMPLE	GOLD \$	SLUDGE GOLD \$		
274.0-277.5	Alt. tuff with consid. sulphides mostly Py.						
	275.8-277.0	J.P.15	1.2'	0.01			
	Carbonated tuff with heavy sulphides mostly Py. some qtz. threads.						
277.5-298.0	Sheared acid tuff, light greensih grey, soapy texture.						
298.0	END OF HOLE						

NORTHERN MINER PRESS LIMITED, TORONTO-STOCK FORM NO 801 REV 9/44

DRILLED BY

SIGNED

PROPERTY EAGLELUND

HOLE NUMBER J.P.#1

SHEET NUMBER 7

SECTION FROM _____ TO _____

DIAMOND DRILL RECORD

LOCATION: LAT. _____
 DEP. _____
 ELEVATION OF COLLAR _____
 DATUM _____
 DIRECTION AT START: BEARING _____
 DIP _____

ADDITIONAL SAMPLING
 STARTED _____
 COMPLETED _____
 ULTIMATE DEPTH _____
 PROPOSED DEPTH _____

DEPTH FEET	FORMATION	SAMPLE NO.	WIDTH OF SAMPLE	GOLD \$	SLUDGE GOLD \$
104.6' - 107.6'	2" qtz. strg. Same angle as drill hole, slight pyrite	J.P.19	3.0'	0.12	
107.6 - 110.0'	5" qtz. at 45° to core, slight Py.	J.P.20	2.4'	0.02	
116.5' - 119.5'	2" and 1" qtz strgs. at 30° to core, patches Py	J.P.21	3.0'	0.04	
124.0' - 126.0'	2" qtz strg. plus threads, fair Py in qtz and dike.	J.P.22	2.0'	0.02	
127.0' - 128.2'	Few scattered qtz. threads, slight Py	J.P.23	1.2'	0.01	
139.9' - 143.0'	90% min. dike (Py) Few qtz threads	J.P.24	3.1'	0.06	

NORTHERN MINER PRESS LIMITED, TORONTO-STOCK FORM NO 801 REV 9-64

DRILLED BY Boyles Bros. Drilling Co.

SIGNED J. E. [Signature]

PROPERTY **EAGLE LUND MINES**

HOLE NUMBER S.P.C.1

SHEET NUMBER _____

DIAMOND DRILL RECORD

SECTION FROM 0 TO S.P.C.

ADDITIONAL INFORMATION

LOCATION: LAT _____ DEP _____

STARTED _____

ELEVATION OF COLLAR 75.44 21.50

COMPLETED _____

DATUM _____

ULTIMATE DEPTH _____

DIRECTION AT START: BEARING S 45° W
DIP -50

PROPOSED DEPTH _____

DEPTH FEET	FORMATION	SAMPLE No.	WIDTH OF SAMPLE	GOLD %	SLUDGE GOLD %
0-2	CASSIOLE				
2-28	CALCAREOUS SANDS (SCHIST @ 60°) AT 12.8 - 13' OLD STAGE			1.6	
28-32	DR. CAN. F.G. SCHISTOSE SANDS, F.G. PYRITE @ 30.2 - 2" grey alteration of clastic.				
32-57.5	CALCAREOUS SANDS WITH GLASSY CEMENTATION				
57.5-81.6	F.G. SAND & small py.				
81.6-97.4	F.G. SANDS				
97.4-103.4	massive med. gr. dark lava				
103.4-145.4	lighter more siliceous granular alteration (no distinct contact) granular clastic of quartz & calcite of good mass py. & py. in py. and clastic. The grains distinct here is lighter in color & more siliceous than quartz also coarser granular It is more like typical granodiorite Some siliceous pyrite appears 1 or 2 layers of quartz in clastic white quartz & calcite bluish grey in fine threads & clasts.				

DRILLED _____

SIGNED _____

PROPERTY _____

HOLE NUMBER _____

SHEET NUMBER _____

SECTION FROM _____ TO _____

DIAMOND DRILL RECORD

ADDITIONAL INFORMATION

LOCATION: LAT _____ DEP _____

STARTED _____

ELEVATION OF COLLAR _____

COMPLETED _____

DATUM _____

ULTIMATE DEPTH _____

DIRECTION AT START: BEARING _____
DIP _____

PROPOSED DEPTH _____

DEPTH FEET	FORMATION	SAMPLE NO.	WIDTH OF SAMPLE	GOLD \$	SLUDGE GOLD \$
105.0'	Q1e slgy 11 holes 2" good pyrite				
109.8 - 112.0	70% white gyl	1	2.2'	TR.	
	good py				
112.0 - 113.0	Py gyl slgy	2	1.0	NIL	
114.5 - 116.5		3	2.0	NIL	
113.0 - 114.5	4' gyl + famp py pa	4	1.5'	NIL	
	in situ				
103.4 - 1043.4	DIKE				
119.5 - 131.5	Benin shls + gyl slgy 1' x 1/2" trace py pa	5	2.0	NIL	
121.5 - 122.5		6	1.0	0.24	
	6" white gyl over shls N-S dip 65° W well min py. pa. 4 laminae (apert)				
122.5 - 124.0	2' gyl py pa	7	1.5	TRIS	
126.0 - 127.0	4' gyl well min py pa	8	1.0	NIL	
127.0 - 130.4	3' x 2" gyl slgy good py	9	2.6	.04	
130.4 - 143.0	130.4 - 133.4 white gyl slight py	10	3.0	NIL	
	133.4 - 136.9 white gyl patches py. pa.	11	3.5	TR	

NORTHERN MINER PRESS LIMITED, TORONTO-STOCK FORM NO. 501 REV. 9/44

DRILLED BY _____

SIGNED _____

PROPERTY EAGLELUND MINES LIMITED

9-6-52

HOLE NUMBER J.P. 2

SHEET NUMBER 1

SECTION FROM 0.0 TO

DIAMOND DRILL RECORD

LOCATION: LAT.....
 DEP.....
 ELEVATION OF COLLAR.....
 DATUM 0 - 70' on BL
 DIRECTION AT START: BEARING S 55° E
 DIP - 45°

STARTED September 25th 8.00 P.M.
 COMPLETED September 27th 3.30 P.M.
 ULTIMATE DEPTH 261.0'
 PROPOSED DEPTH.....

DEPTH FEET	FORMATION	SAMPLE NO.	WIDTH OF SAMPLE	GOLD g	SLUDGE GOLD g
0.0- 7.0	Casing				
7.0- 25.0	Chloritized slightly foliated andesite 11.4-12.4 Light greenish alteration with bluish qtz. threads and some epidote Fine Py in alteration.	J.P.16	1.0'	Tr	
25.0- 59.5	More mass med. grained andesite. Scattered threads of fine Py and blebs of white carb. and qtz. At 27.0' - white qtz stringer At 45° to core no min. 27.0'-28.4' Two strgs 2" and 5" white glassy qtz. little Py	J.P.17	1.4'	Tr.	
	29.4-30.8 White glassy qtz. incl. of chlorite sparse min.	J.P.18	1.4'	Nil	

DRILLED BY.....

SIGNED.....

PROPERTY EAGLELUND MINES LIMITED

HOLE NUMBER

SHEET NUMBER 2

DIAMOND DRILL RECORD

SECTION FROM 59.5 TO

LOCATION: LAT.....
 DEP.....

STARTED

ELEVATION OF COLLAR

COMPLETED

DATUM

ULTIMATE DEPTH

DIRECTION AT START: BEARING.....
 DIP.....

PROPOSED DEPTH

DEPTH FEET	FORMATION	SAMPLE NO.	WIDTH OF SAMPLE	GOLD g	SLURGE GOLD g
59.5- 95.0	Mass. med. grained andesite				
	At 62.3 1" white qtz. no min				
	At 64.8 Two glassy qtz strg. 2" and 3"				
	Flat lying at 90° to core sparse min.				
	At 76.0 4" white glassy qtz. reddish brown streaks may be carbonate				
95.0-139.0	Less chlorite fine grained andesite slightly foliated				
	At 97.5 1/2" white qtz. strg.				
	101.0-102.8'	J.P.25	1.8	Tr	
	70% white to dark glassy qtz. Fair Py in patches consid. chlorite and a little Cpy.				
	At 105.0 8" greensih alteration 10% qtz. and 30% epidote fine Py				

DRILLED BY

SIGNED

PROPERTY EAGLELUND MINES LIMITED

HOLE NUMBER

SHEET NUMBER 3

DIAMOND DRILL RECORD

SECTION FROM TO

LOCATION: LAT.....
 DEP.....

STARTED

ELEVATION OF COLLAR

COMPLETED

DATUM

ULTIMATE DEPTH

DIRECTION AT START: BEARING.....
 DIP.....

PROPOSED DEPTH

DEPTH FEET	FORMATION	SAMPLE No	WIDTH OF SAMPLE	GOLD \$	SLUDGE GOLD \$		
95.0-139.0	Less chlorite f.g. andesite, few scattered qtz threads.						
	At 121.0 4" white qtz. strg.						
	At 45° to core slight Py						
121.0-122.2		J.P.26	1.2'	0.04			
	At 123.2						
	3" white qtz. at 60° to core sparse min.						
	At 126.3						
	3" light greenish alteration slight Py						
139.0-142.0	139.0-142.0 Fine grained agglomerate alt. to greyish green.						
142.0-162.0	Fine grained chloritic andesite slightly foliated						

DRILLED BY

SIGNED

PROPERTY EAGLELUND MINES LIMITED

HOLE NUMBER

SHEET NUMBER 14

DIAMOND DRILL RECORD

SECTION FROM TO

LOCATION: LAT.....
 DEP.....
 ELEVATION OF COLLAR.....
 DATUM.....
 DIRECTION AT START: BEARING.....
 DIP.....

STARTED.....
 COMPLETED.....
 ULTIMATE DEPTH.....
 PROPOSED DEPTH.....

DEPTH FEET	FORMATION	SAMPLE NO.	WIDTH OF SAMPLE	GOLD g	SLUDGE GOLD g		
142.0-162.0	F.g. chlor. and at 152.0 - 2" white qtz. strg.						
162.0-166.0	Light grey tuff						
166.0-175.4	F.g. schistose andesite Few scattered qtz and carb threads						
175.4-186.0	Sheared agg. interbedded with chloritic andesite						
186.0-206.8	F.g. schistose andesite with considerable chlorite and greensih alteration some epidote Threads of qtz. and carb. some Py in patches						
206.8-225.0	F.G. chloritic schist, scattered carb threads						
225.0-227.4	Med grained mass and.						

DRILLED BY

SIGNED.....

PROPERTY EAGLELUND MINES LIMITED

HOLE NUMBER

SHEET NUMBER 5

DIAMOND DRILL RECORD

SECTION FROM TO

LOCATION: LAT.....
 DEP.....
 ELEVATION OF COLLAR.....
 DATUM.....
 DIRECTION AT START: BEARING.....
 DIP.....

STARTED.....
 COMPLETED.....
 ULTIMATE DEPTH.....
 PROPOSED DEPTH.....

DEPTH FEET	FORMATION	SAMPLE NO	WIDTH OF SAMPLE	GOLD \$	SLUDGE GOLD \$
227.4-248.8	DIKE Grano-diorite Qtz. threads and stringers Patches of Py and a little Po				
229.9-231.5	1/2" white qtz. strg. Fair streaks of Py in dike material, Mass. Py and tourmaline at 230.1	J.P.27	1.6	Nil	
233.0-234.0	1" white qtz. strg. at 80° to core Fair Py in qtz and dike	J.P.28	1.0'	Tr	
234.0-236.0	Min. dike good Py	J.P.29	2.0'	Nil	
236.0-239.0	Min. grano-diorite, fair fine Py	J.P.30	3.0'	Nil	
239.0-242.0	Ditto J.P.30	J.P.31	3.0'	Nil	

NORTHERN MINER PRESS LIMITED, TORONTO-STOCK FORM NO 801 REV 9/44

DRILLED BY

SIGNED

PROPERTY EAGLELUND MINES LIMITED

HOLE NUMBER

SHEET NUMBER 6

SECTION FROM TO

DIAMOND DRILL RECORD

LOCATION: LAT.....
 DEP.....

STARTED

ELEVATION OF COLLAR

COMPLETED Sept. 27th 330 P.M.

DATUM

ULTIMATE DEPTH 261.0

DIRECTION AT START: BEARING.....
 DIP.....

PROPOSED DEPTH 250.0

DEPTH FEET	FORMATION	SAMPLE NO.	WIDTH OF SAMPLE	GOLD %	SLUDGE GOLD %
242.0-245.0	Well min. granodiorite	J.P.32	3.0'	0.04	
	Good Py (fine) little Cpy. Po and tourm.				
245.0-247.7	Well min. granodiorite	J.P.32	2.7	0.03	
	Good Py (fine) little tour Po				
247.7-248.8	Less silic. dike mat. fair Py	J.P.34	1.1	0.05	
248.8-261.0	With consid. fine Py dissem. throughout. Med grained and foliated				
261.0	END OF HOLE				
	Corr Dip Test				
	39° 20'				

NORTHERN MINER PRESS LIMITED, TORONTO—STOCK FORM NO 501 REV 5/44

DRILLED BY Boyles Bros Drilling (E) Ltd

SIGNED [Signature]

PROPERTY EAGLELUND MINES LIMITED

9-6-52

HOLE NUMBER J.P.3

SHEET NUMBER 1

SECTION FROM 0.0 TO 75.0

DIAMOND DRILL RECORD

LOCATION: LAT. _____
 DEP. _____
 ELEVATION OF COLLAR _____
 DATUM 185' NW 0-150
 DIRECTION AT START: BEARING S 35° W
 DIP - 50

STARTED September 28th - 5.00P.M.
 COMPLETED September 30th - 11.00A.M.
 ULTIMATE DEPTH 290.0'
 PROPOSED DEPTH 250.0'

DEPTH FEET	FORMATION	SAMPLE NO.	WIDTH OF SAMPLE	GOLD \$	SLUDGE GOLD \$
0.0- 5.0	Casing				
5.0- 33.0	Fine grained schistose chloritic andesite				
	9.9-10.7'	J.P.35	0.8'	Tr.	
	Gre. ish alteration (epidote) and 3" white qtz. Fair Py.				
33.0- 48.0	More massive fine gr. andesite (slightly foliated)				
	At 26.2 15" white glassy qtz. and stringers sparse min. Vein at 30° to core Few scattered threads qtz. and carb.				
48.0- 75.0	Med. grained mass and scattered qtz threads				
	62.3 4" bluish white qtz. no min.				

DRILLED BY _____

SIGNED _____

PROPERTY EAGLELUND MINES LIMITED

HOLE NUMBER

SHEET NUMBER 2

DIAMOND DRILL RECORD

SECTION FROM TO

LOCATION: LAT.....
 DEP.....

STARTED

ELEVATION OF COLLAR

COMPLETED

DATUM

ULTIMATE DEPTH

DIRECTION AT START: BEARING.....
 DIP.....

PROPOSED DEPTH

DEPTH FEET	FORMATION	SAMPLE NO.	WIDTH OF SAMPLE	GOLD \$	EDGE GOLD \$		
75.0-13.0	Fine grained slightly schistose andesite						
	At 75.0 2" white qtz.						
	At 98.5 -99.8						
	Qtz. stringers and greensih alteration						
	2 stringers - 3" wide.						
	At 109.4 5" white qtz. vein (glossy) some						
	chlorite) Vein at 45 ⁰ to core, no min.						
	Few scattered qtz threads and blebs						
	121.0 - 122.0 greensih alteration						
130.0-137.0	Greyish altered tuff and agglom. bluish qtz.						
	strgs.						
137.0	Med. grained slightly schistose andesite						

NORTHERN MINER PRESS LIMITED, TORONTO-STOCK FORM No 301 REV 9/44

DRILLED BY

SIGNED

PROPERTY EAGLELUND MINES LIMITED

HOLE NUMBER

SHEET NUMBER 3

DIAMOND DRILL RECORD

SECTION FROM TO

LOCATION: LAT.....
 DEP.....
 ELEVATION OF COLLAR.....
 DATUM.....
 DIRECTION AT START: BEARING.....
 DIP.....

STARTED.....
 COMPLETED.....
 ULTIMATE DEPTH.....
 PROPOSED DEPTH.....

DEPTH FEET	FORMATION	SAMPLE NO.	WIDTH OF SAMPLE	GOLD g	SLUDGE GOLD g
137.0-143.0	Med. grained schistose andesite				
143.0-153.0	Chloritic schist and basic tuff interbedded				
153.0-169.0	Med. grained slightly schistose andesite				
169.0-176.5	Fine grained schistose andesite				
176.5-183.0	Med. grained massive and.				
183.0-223.5	Fine grained slightly schistose and sections of greenish alt. At 190.2 6" white glassy qtz. no min. at 70° to core At 202.0' 4" white to dark qtz. no min. Few scattered qtz, threads and stringers. some light greenish alt.				

NORTHERN MINER PRESS LIMITED, TORONTO-STOCK FORM NO 901 REV 9/44

DRILLED BY

SIGNED

PROPERTY EAGLELUND MINES LIMITED

HOLE NUMBER J.P. 4

SHEET NUMBER 1

SECTION FROM 0.0 TO 156.5

DIAMOND DRILL RECORD

LOCATION: LAT. _____
 DEP. _____
 ELEVATION OF COLLAR _____
 DATUM 195' NW 0-150'
 DIRECTION AT START: BEARING S - 5° W
 DIP - 45°

STARTED October 1st 12.00 Noon
 COMPLETED October 3rd 2.00 P.M.
 ULTIMATE DEPTH 287.0
 PROPOSED DEPTH 260.0

DEPTH FEET	FORMATION	SAMPLE NO.	WIDTH OF SAMPLE	GOLD \$	BLURGE GOLD \$
0.0- 7.0	Casing				
7.0- 31.0	Med. grained slightly schistose andesite				
31.0- 58.0	Fine grained slightly schistose andesite				
58.0-145.4	Med. grained mass and. 48.0-54.5 some alteration and qtz. threads scattered patches of Py 67.8 2" qtz. strgs. 107.5 6" light greensih alteration				
145.4-150.6	Greyish tuff				
150.6-156.5	Med. grained schistose andesite				
156.5-	Med. gr. massive andesite 172.0' 6" white glassy qtz. no min.				

NORTHERN MINER PRESS LIMITED, TORONTO--STOCK FORM NO. 501 REV. 9/44

DRILLED BY _____

SIGNED _____

PROPERTY EAGLELUND MINES LIMITED

HOLE NUMBER J.P. 4

SHEET NUMBER 2

SECTION FROM 156.5 TO 285.0

DIAMOND DRILL RECORD

LOCATION: LAT. _____
 DEP. _____
 ELEVATION OF COLLAR _____
 DATUM _____
 DIRECTION AT START: BEARING _____
 DIP _____

STARTED _____
 COMPLETED _____
 ULTIMATE DEPTH _____
 PROPOSED DEPTH _____

DEPTH FEET	FORMATION	SAMPLE No.	WIDTH OF SAMPLE	GOLD g	SLUDGE GOLD g
156.5-194.0	Fine to Med. gr. massive and.				
194.0-222.0	Coarse grained mass. and. Few scattered qtz. threads (chloritized)				
222.0-245.0	Fine to med. grained mass. dark green andesite DIKE				
245.0-248.1	Unaltered diorite Slightly min. no qtz.	J.P.39	3.1'		
248.1-271.0	Greyish schistose tuff? sparse min.				
271.0-285.0	Med. gr. chloritic schistose and.				
285.0	END OF HOLE				

NORTHERN MINER PRESS LIMITED, TORONTO - STOCK FORM NO. 801 REV. 9-44

DRILLED BY Exley Bros. Drilling Co. Ltd.

SIGNED J. E. ...

PROPERTY EAGLELUND MINES LIMITED

9-3-53

HOLE NUMBER J.P. #5

SHEET NUMBER 1

DIAMOND DRILL RECORD

SECTION FROM 0.0 TO 96.4

LOCATION: LAT.....
 DEP.....
 ELEVATION OF COLLAR.....
 DATUM 150' N.W. 0-1276'
 BEARING S 30° E
 DIRECTION AT START: DIP 50°

STARTED October 6th 1.00 P.M.
 COMPLETED October 8th 9.00 P.M.
 ULTIMATE DEPTH 231.0'
 PROPOSED DEPTH 250.0'

DEPTH FEET	FORMATION	SAMPLE NO.	WIDTH OF SAMPLE	GOLD \$	SLUDGE GOLD \$
0.0- 12.0	Casing				
12.0- 25.4	Med. grained schistose andesite Numerous Qtz. and carb threads				
25.4- 29.2	Light pinkish green porphyry dike Pink feldspar and phenocrysts of Qtz. Sharp well determined contacts. Scattered patches of Py and few needles of tourmaline	J.P.40	3.8	Nil	
29.2- 84.6	Med. grained massive andesite				
	44.5' 3" glassy Qtz. strg. no min.				
	64.9 1 1/2" pinkish Qtz. strg. slight Py				
	80.0 3" white milky Qtz. slight Py				
	83.5 2" pinkish white Qtz slight Py				
84.6- 96.4	Coarse grained mass. andesite				

DRILLED BY

SIGNED

PROPERTY Eaglelund Mines Limited

HOLE NUMBER

SHEET NUMBER 2

DIAMOND DRILL RECORD

SECTION FROM 96.4 TO

LOCATION: LAT.....
 DEP.....

ELEVATION OF COLLAR

DATUM

DIRECTION AT START: BEARING.....
 DIP.....

STARTED

COMPLETED

ULTIMATE DEPTH

PROPOSED DEPTH

DEPTH FEET	FORMATION	SAMPLE NO.	WIDTH OF SAMPLE	GOLD g	SLUDGE GOLD g			
96.4-128.0	Med. grained massive andesite Numerous qtz. and carb threads and blebs. me Pyrite disseminated throughout.							
128.0-147.6	Fine to med gr. chloritic andesite slightly foliated. Numerous qtz. threads and blebs 132.4 1/2" pink feldspar stringers. slight displacement or faulting about horizontal							
147.6-154.6	Coarse grained mass andesite (mottled dioritic appearance)							
154.6-195.5	Med. grained chloritic massive andesite 156.0 1/4" white milky qtz. no min. Stringer - vertical dip							
195.5-	Fine grained massive andesite							

DRILLED BY

SIGNED

PROPERTY EAGLELUND MINES LIMITED

HOLE NUMBER

SHEET NUMBER 3

DIAMOND DRILL RECORD

SECTION FROM TO

LOCATION: LAT.....
 DEP.....

STARTED

ELEVATION OF COLLAR

COMPLETED

DIR. IN

ULTIMATE DEPTH

DIRECTION AT START: BEARING

PROPOSED DEPTH

DEPTH FEET	FORMATION	SAMPLE NO	WIDTH OF SAMPLE	GOLD \$	SLUDGE GOLD \$		
195.5-197.2	F.g. mass. andesite						
197.2-212.0	DIKE						
	197.2-198.2	J.P.41	1.0'	Tr			
	6" white milky qtz. plus 1" strg. 60% qtz. little feld Py and chlorite						
	198.2-200.4	J.P.42	2.2	Tr			
	Qtz. strgs. 2" max (30%) well altered granodiorite scattered Py						
	200.4-202.9	J.P.43	2.5	Tr			
	Qtz. strgs. 1" max (20%) in highly alt. grano-diorite scattered Py						
	202.9-204.9	J.P.44	2.0'	0.02			
	1" white milky qtz. strg. bal. unalt. dike material, patches Py						

NORTHERN MINER PRESS LIMITED, TORONTO-STOCK FORM NO 801 REV 9/44

DRILLED BY

SIGNED

PROPERTY EAGLELUND MINES LIMITED

HOLE NUMBER

SHEET NUMBER 4

SECTION FROM TO

DIAMOND DRILL RECORD

LOCATION: LAT.....
 DEP.....
 ELEVATION OF COLLAR

DATUM

DIRECTION AT START: BEARING.....
 DIP.....

STARTED

COMPLETED

ULTIMATE DEPTH

PROPOSED DEPTH

DEPTH FEET	FORMATION	SAMPLE NO	WIDTH OF SAMPLE	GOLD \$	SLUDGE GOLD \$
197.2-212.0	DIKE (cont'd)				
204.9-206.4	Irreg. qtz. strgs. at 204.9-205.5 (1" max) good Py. Mass and coarse in qtz. Little tourmaline	J.P.45	1.5	Tr	
206.4-209.0	70% white milky qtz. plus a little chlorite and alt. grano-diorite including 5" stringer patches Py little Cpy.	J.P.46	2.6	0.03	
209.0-212.0	2-2" white qtz. strgs. plus greyish alt. grano-diorite. Fair Py scattered in dike	J.P.47	3.0'	Tr	
212.0-231.0	Coarse grained andesite with scattered qtz. threads (dark green)				
231.0	END OF HOLE Corr. Dip Test 43° 25'				

NORTHERN MINER PRESS LIMITED, TORONTO-STOCK FORM NO 501 REV 9/44

DRILLED BY Weyles Bros Drilling (E) Ltd.

SIGNED J. P. ...

PROPERTY EAGLELUND MINES LIMITED

9-3-53

HOLE NUMBER J.P. # 6SHEET NUMBER 1SECTION FROM 0.0 TO

DIAMOND DRILL RECORD

LOCATION: LAT. _____
 DEP. _____
 ELEVATION OF COLLAR _____
 DATUM 150' N.W. 0 = 1376
 DIRECTION AT START: BEARING S 30° E
 DIP 50

STARTED October 9th, 1950 at 3.00 P.M.
 COMPLETED October 11th, 1950 at 11.40 A.M.
 ULTIMATE DEPTH _____
 PROPOSED DEPTH 250.0'

DEPTH FEET	FORMATION	SAMPLE NO	WIDTH OF SAMPLE	GOLD \$	SLUDGE GOLD \$
0.0- 20.0	Casing				
20.0- 35.5	Med. grained light to dark green schistose andesite with numerous qtz. threads.				
35.0-36.5	1.0' dark green schist with coarse Pyrite, 1" white qtz. strg. on contact with acid tuff, bal sheared acid tuff	J.P.48	1.5'	0.04	
35.5- 44.0	Light greyish green acid tuff (schistose)				
44.0- 45.6	Fine grained schistose andesite 45.1-45.6 light acid tuff				
46.6- 56.6	Light greenish grey acid tuff (schistose)				
56.6-	Massive med. grained andesite scattered patches Pyrite				

NORTHERN MINER PRESS LIMITED, TORONTO, STOCK FORM NO. 501 REV. 2-44

DRILLED BY

SIGNED

PROPERTY EAGLELUND MINES LIMITED

HOLE NUMBER

SHEET NUMBER 2

DIAMOND DRILL RECORD

SECTION FROM TO

LOCATION: LAT.
 DEP.

STARTED

ELEVATION OF COLLAR

COMPLETED

DATUM

ULTIMATE DEPTH

DIRECTION A1 START: BEARING
 DIP

PROPOSED DEPTH

DEPTH FEET	FORMATION	SAMPLE No	WIDTH OF SAMPLE	GOLD \$	SLUDGE GOLD \$		
56.6- 90.0	Mass. med. grained andesite, scattered patches pyrite, numerous qtz. and carb threads and blebs						
80.4	2" white milky qtz. and 2" alteration with consid. Py. 80.2-80.7	J.P.49	0.5'	Nil			
90.0- 96.0	Pinkish green feldspar porphyry well sheared no min.						
96.0-126.0	Med. grained mass. andesite scattered qtz. threads and blebs.						
	At 101.0' Broken up rusty seam, may be fault.						
	At 120.0 Rusty broken up seam.						

THE MINER PRESS LIMITED, TORONTO. STOCK FORM NO. 601 REV. 9.44

DRILLED BY

SIGNED

PROPERTY EAGLELUND MINES LIMITED

HOLE NUMBER J.P. 6

SHEET NUMBER 3

SECTION FROM TO

DIAMOND DRILL RECORD

LOCATION: LAT.
 DEP.
 ELEVATION OF COLLAR
 DATUM
 DIRECTION AT START BEARING
 DIP

STARTED
 COMPLETED
 ULTIMATE DEPTH
 PROPOSED DEPTH

DEPTH FEET	FORMATION	SAMPLE NO	WIDTH OF SAMPLE	GOLD %	SLUDGE GOLD %
126.0-138.0	Fine grained slightly schistose andesite, qtz. threads and blebs.				
	127.5' 1 1/2" pinkish qtz. stringer, no min.				
138.0-145.0	Basic coarse grained basalt, 50% blebs and threads of feldspar, no min.				
145.0-195.0	Fine grained massive andesite, qtz. blebs and threads				
	153.0 Rusty seam.				
	157.0-160.0 Rusty seams broken up. Looks like fault zone.				
	186.0 1" qtz. strg. no min.				
	DIKE				
195.0	Unaltered diorite, qtz. stringers (milky)				
	195.6-197.6	J.P.50	2.0	0.02	
	White milky qtz. stringers (20%) sparse min. Py.				

NORTHERN MINER PRESS LIMITED, TORONTO, STOCK FORM NO. 501 REV. 9-44

DRILLED BY

SIGNED

PROPERTY EAGLELUND MINES LIMITED

HOLE NUMBER

SHEET NUMBER 4

SECTION FROM TO

DIAMOND DRILL RECORD

LOCATION: LAT
 DEP.

STARTED

ELEVATION OF COLLAR

COMPLETED

DATUM

ULTIMATE DEPTH

DIRECTION AT START: BEARING
 DIP

PROPOSED DEPTH

DEPTH FEET	FORMATION	SAMPLE NO	WIDTH OF SAMPLE	GOLD g	SLUDGE GOLD g
195.0-216.0	DIKE (cont'd) Unaltered diorite with qtz. strgs. sparse min. Py.				
201.0-203.2	Includes 5" qtz. and feldspar vein with good Py. Bal. about 10% qtz. in unalt. dike.	J.P.51	2.2	Nil	
204.5-206.0	50% qtz. and feld. in irreg. strgs. slight Py.	J.P.52	1.5'	Nil	
208.9-211.9	About 40% white milky qtz. in irreg. veins (3" and 5" wide) slight Py and little tourmaline	J.P.53	3.0'	Nil	
211.9-213.4	50% white milky qtz. and alt. granO-diorite fine Py in patches.	J.P.54	1.5'	0.06	

NORTHEASTERN MINER PRESS LIMITED, TORONTO STOCK FORM NO. 801 REV. 8-44

DRILLED BY

SIGNED

PROPERTY EAGLELUND MINES LIMITED

9-3-53

HOLE NUMBER J.P. #7

SHEET NUMBER 1

SECTION FROM 0.0 TO

DIAMOND DRILL RECORD

LOCATION: LAT.
 DEP.
 ELEVATION OF COLLAR
 DATUM 150' NW 1476' on BL
 DIRECTION AT START: BEARING S 30° E
 DIP - 50°

STARTED October 12th, 1950 11.00 A.M.
 COMPLETED October 14th, 1950 11.00 P.M.
 ULTIMATE DEPTH 245.0'
 PROPOSED DEPTH 240.0'

DEPTH FEET	FORMATION	SAMPLE NO	WIDTH OF SAMPLE	GOLD \$	SLUDGE GOLD \$
0.0- 15.0	Casing				
15.0- 38.5	Med. grained massive andesite At 35.8' 3" white glassy qtz, Few scattered qtz. threads and stringers				
38.5- 46.8	Fine grained massive andesite				
46.8- 54.4	Dark basic schistose tuff				
54.4- 58.0	Fine grained chloritic schist num. qtz. and carb. threads				
58.0- 59.3	Light greenish qtz. porphyry				
59.3- 76.5	Sheared agglomerate with some alteration at 71.5' and between 73.5' and 76.0'				
76.5- 84.4	Light greenish acid tuff (schistose)				

© 1950 THE MINER PRESS LIMITED, TORONTO STOCK FORM NO. 501 REV. 9-44

DRILLED BY

SIGNED

PROPERTY EAGLELUND MINES LIMITED

HOLE NUMBER

SHEET NUMBER 2

SECTION FROM TO

DIAMOND DRILL RECORD

LOCATION: LAT.....
 DEP.....
 ELEVATION OF COLLAR.....
 DATUM.....
 DIRECTION AT START: BEARING.....
 DIP.....

STARTED.....
 COMPLETED.....
 ULTIMATE DEPTH.....
 PROPOSED DEPTH.....

DEPTH FEET	FORMATION	SAMPLE NO	WIDTH OF SAMPLE	GOLD \$	SLUDGE GOLD \$		
84.4- 89.2	Pinkish green altered acid tuff. no mineralization						
89.2- 90.0	Dark green fine grained andesite						
90.0- 99.2	Light greenish chloritized acid tuff (schistose)						
99.2-128.4	Dark green fine grained massive andesite 116.5' Some alteration (may be fault)						
128.4-140.4	Pinkish grey Qtz. porphyry a little tourmaline mostly barren of mineralization						
140.4-159.0	Fine grained massive andesite Few scattered qtz. threads At 146.0 3" feldspar porphyry no mineralization						

NORTHERN MINER PRESS LIMITED TORONTO STOCK FORM NO. 501 REV. 9-44

DRILLED BY

SIGNED

PROPERTY EAGLELUND MINES LIMITED

HOLE NUMBER

SHEET NUMBER 3

DIAMOND DRILL RECORD

SECTION FROM TO

LOCATION: LAT.....
 DEP.....
 ELEVATION OF COLLAR

DATUM

DIRECTION AT START: BEARING.....
 DIP.....

STARTED

COMPLETED

ULTIMATE DEPTH

PROPOSED DEPTH

DEPTH FEET	FORMATION	SAMPLE NO	WIDTH OF SAMPLE	GOLD \$	SLUDGE GOLD \$		
159.0-191.0	Med. grained massive andesite Few qtz. threads and stringers						
	170.0' 2" milky white qtz. stringer no min. pink feldspar						
191.0-201.0	Fine grained mass. andesite						
201.0-211.0	Bands of tuff and agglom. numerous qtz. and carb. threads.						
211.0-221.5	Fine grained and mass. andesite						
221.5-230.0	FAULT ZONE Rusty brecciated zone numerous qtz. and carb blebs and threads						
230.0-245.0	Med. grained mass. andesite Few qtz. and carb threads.						
245.0	END OF HOLE						

MINING ENGINEER PRESS LIMITED TORONTO STOCK FORM NO 501 REV 8 44

Corr. Dip Test 41° 15' 00"

DRILLED BY *Boyles & Co Drilling Co Ltd*

SIGNED *J. P. ...*

PROPERTY EAGLELUND MINES LIMITED

HOLE NUMBER J.P. #8

SHEET NUMBER 1

DIAMOND DRILL RECORD

SECTION FROM 0.0 TO

LOCATION: LAT.
 DEP.
 ELEVATION OF COLLAR
 DATUM 0 - 1150' on Base Line
 DIRECTION AT START: BEARING N 50°E
 DIP - 45°

STARTED October 16th 2.00 P.M.
 COMPLETED October 18th 3.00 A.M.
 ULTIMATE DEPTH 305.0'
 PROPOSED DEPTH 200.0'

DEPTH FEET	FORMATION	SAMPLE NO	WIDTH OF SAMPLE	GOLD \$	SLUDGE GOLD \$			
0.0- 6.0	Casing							
6.0- 24.1.2	Grano-diorite dike, well min. with patches of Pyrite and a little tourmaline. Quartz veins and stringers $\frac{1}{2}$ " to 2.0' in width at various angles to core.							
6.0-7.8	$\frac{1}{2}$ " white milky qtz. good Py plus well min. altered g.d.	J.P.56	1.8	0.05				
7.8-10.6	5" and 9" qtz. veins at 45° to core. fair Py in qtz. and dike	J.P.57	2.8	0.02				
10.6-12.8	9" white milky qtz. at 30° to core good Py in patches, a little tourmaline coarse Py in dike.	J.P.58	2.2	0.04				

ALL OTHER MINER PRESS LIMITED TORONTO STOCK FORM NO. 501 REV. 9-44

DRILLED BY

SIGNED

PROPERTY EAGLELUND MINES LIMITED

HOLE NUMBER

SHEET NUMBER 2

DIAMOND DRILL RECORD

SECTION FROM TO

LOCATION: LAT.
 DEP.

STARTED

ELEVATION OF COLLAR

COMPLETED

DATUM

ULTIMATE DEPTH

DIRECTION AT START: BEARING
 DIP

PROPOSED DEPTH

DEPTH FEET	FORMATION	SAMPLE NO	WIDTH OF SAMPLE	GOLD g	SLUDGE GOLD g
12.8-15.0	White milky qtz. sparse min. a little fine Py.	J.P.59	2.2	Nil	
15.0-18.0	20% white qtz. in irreg. strgs. 1/2" max. width. Good Py in patches in qtz. and dike	J.P.60	3.0	Nil	
18.0-21.0	4" and 8" qtz. veins at 70° to core fine Py and some tourmaline in qtz. and dike	J.P.61	3.0	0.10	
21.0- 29.0	Finer grained grano-diorite, scattered qtz. threads and stringers up to 2" in width (May sample later)				
29.0-31.0	White milky qtz. vein at 30° to core Good Py near walls	J.P.62	2.0	Tr.	

MULTI-MINER PRESS LIMITED TORONTO STOCK FORM NO. 501 REV. 8-44

DRILLED BY

SIGNED

PROPERTY EAGLELUND MINES LIMITED

HOLE NUMBER

SHEET NUMBER 4

DIAMOND DRILL RECORD

SECTION FROM TO

LOCATION: LAT.....
DEP.....

STARTED

ELEVATION OF COLLAR

COMPLETED

DATUM

ULTIMATE DEPTH

DIRECTION AT START: BEARING.....
DIP.....

PROPOSED DEPTH

DEPTH FEET	FORMATION	SAMPLE NO	WIDTH OF SAMPLE	GOLD \$	SLUDGE GOLD \$			
40.5-44.5	4" qtz. strg. at 42.6' plus two threads slight Py	NOT	SAMPLED					
44.5-45.6	Well min. grano-diorite coarse Py	J.P.67	1.1	0.04				
45.6-47.9	90% white milky qtz. at 30° to core. Fair Py and Po at chloritic inclusions	J.P.68	2.3	Tr.				
47.9-50.9	7" of irreg. qtz. stringers (70%) plus highly altered grano-diorite Pyrite coarse and fine dissem. throughout	J.P.69	3.0	Nil				
50.9-53.9	4-1" qtz. strgs. at 80° to core plus 2 - 1" strgs. and threads. Fair Py along stringer walls	J.P.70	3.0	Nil				

EAGLELUND MINES LIMITED TORONTO STOCK FORM NO. 501 REV. 9-44

DRILLED BY

SIGNED

PROPERTY EAGLELUND MINES LIMITED

Hole J.P.8 Continued

HOLE NUMBER J.P.8

SHEET NUMBER 7

SECTION FROM TO

DIAMOND DRILL RECORD

LOCATION: LAT.
 DEP.
 ELEVATION OF COLLAR
 DATUM
 DIRECTION AT START: BEARING
 DIP

STARTED
 COMPLETED
 ULTIMATE DEPTH
 PROPOSED DEPTH

DEPTH FEET	FORMATION	SAMPLE NO	WIDTH OF SAMPLE	GOLD g	SLUDGE GOLD g
59.4-62.4	4" and 2 - 1" qtz. strgs. Highly altered and finer grained. Fair Py and Po	J.P.76	3.0	Tr	
62.4-65.4	12" and 3" white milky qtz. veins fair Py along walls	J.P.77	3.0	Tr	
65.4-67.0	3 narrow irreg. qtz. strgs. 1" max. fair Py	J.P.78	1.6	Nil	
69.7-72.2	18" qtz. vein at 20° to core plus 2 - 1" strgs. sl. Py	J.P.79	2.5	Nil	
72.2-77.0	Irreg. qtz. strgs. 1" max. Fine Py. dissem.	J.P.80	4.8	0.01	

NORTHERN MINER PRESS LIMITED, TORONTO. STOCK FORM NO. 801 REV. 9-44

DRILLED BY

SIGNED

PROPERTY EAGLELUND MINES LIMITED

HOLE NUMBER

SHEET NUMBER 8

SECTION FROM TO

DIAMOND DRILL RECORD

LOCATION: LAT.
 DEP.
 ELEVATION OF COLLAR
 DATUM
 DIRECTION AT START: BEARING
 DIP

STARTED
 COMPLETED
 ULTIMATE DEPTH
 PROPOSED DEPTH

DEPTH FEET	FORMATION	SAMPLE NO	WIDTH OF SAMPLE	GOLD \$	SLUDGE GOLD \$
77.0-80.7	25" and 11" qtz. veins at 35° to core Coarse Py along walls	J.P.81	3.7	Tr	
80.7-85.0	5" and 2" qtz. veins good Py	J.P.82	4.3	Nil	
85.0-87.0	6" and 4" qtz. fair Py & littl tourmaline	J.P.83	2.0	Nil	
87.0-91.4	5 narrow qtz. strgs. 2" max. coarse Py in qtz.	J.P.84	4.4	Tr	
91.4-93.0	5" and 1" qtz. strgs. consid. fine Py	J.P.85	1.6	Tr	

ALLIANCE MINER PRESS LIMITED, TORONTO, STOCK FORM NO 501 REV 9-44

DRILLED BY

SIGNED

PROPERTY EAGLELUND MINES LIMITED

HOLE NUMBER

SHEET NUMBER 9

DIAMOND DRILL RECORD

SECTION FROM TO

LOCATION: LAT.
 DEP.
 ELEVATION OF COLLAR
 DATUM
 DIRECTION AT START: BEARING
 DIP

STARTED
 COMPLETED
 ULTIMATE DEPTH
 PROPOSED DEPTH

DEPTH FEET	FORMATION	SAMPLE NO	WIDTH OF SAMPLE	GOLD \$	SLUDGE GOLD \$		
95.0-98.0	4" qtz. at 45° to core plus irreg. strgs good Py in qtz.	J.P.86	3.0	Tr			
99.0-102.0	7", 4" and 3" qtz. strg. good coarse Py. and some Po in qtz.	J.P.87	3.0	Tr			
102.0-105.0	14" white milky qtz. Patches coarse Py.	J.P.88	3.0	Tr			
105.0-107.6	5" qtz. plus threads. Fine Py in qtz. and dike	J.P.89	2.6	Nil			
107.6-110.1	90% qtz. at 45° to core Fair Py at F.W. of sample	J.P.90	2.5	Nil			

DRILLED BY

SIGNED

PROPERTY EAGLELUND MINES LIMITED

HOLE NUMBER

SHEET NUMBER 10

DIAMOND DRILL RECORD

SECTION FROM TO

LOCATION: LAT.
 DEP.

STARTED

ELEVATION OF COLLAR

COMPLETED

DATUM

ULTIMATE DEPTH

DIRECTION AT START: BEARING
 DIP

PROPOSED DEPTH

DEPTH FEET	FORMATION	SAMPLE NO	WIDTH OF SAMPLE	GOLD g	SLUDGE GOLD g		
110.1-113.1	2" qtz. strg. at 45° to core Coarse and fine Py dissem. throughout	J.P.91	3.0	0.02			
113.1-115.9	3 - 1" qtz. strgs. with bluish qtz. threads Coarse Py in dike	J.P.92	2.8	Tr			
115.9-116.7	4" irreg. qtz. at 30° to core Coarse Py in dike	J.P.93	0.8	0.02			
120.0-121.3	1½" white milky qtz. at 80° to core Consid coarse cubes Py and Po in dike. Numerous bluish qtz. threads	J.P.94	1.3	Tr			
121.3-123.8	1" qtz. strg. at 80° to core. Dike well min Py	J.P.95	2.5	Tr			

NORTHEN MINER PRESS LIMITED, TORONTO STOCK FORM NO. 601 REV. 9-44

DRILLED BY

SIGNED

PROPERTY EAGLELUND MINES LIMITED

HOLE NUMBER

SHEET NUMBER 11

DIAMOND DRILL RECORD

SECTION FROM TO

LOCATION: LAT.....
 DEP.....

STARTED

ELEVATION OF COLLAR

COMPLETED

DATUM

ULTIMATE DEPTH

DIRECTION AT START: BEARING

PROPOSED DEPTH

DIP

DEPTH FEET	FORMATION	SAMPLE NO	WIDTH OF SAMPLE	GOLD g	SLUDGE GOLD g		
123.8-126.8	2 - 4", 3" and 2" qtz. strgs. at 60° to core. Coarse Py and some Po in patches	J.P.96	3.0	0.06			
126.8-129.8	9" and 3" qtz. strgs. at 30° to core plus bluish qtz. threads. Fair sulphides in dike mostly Py.	J.P.97	3.0	0.24			
129.8-132.8	2 - 7" qtz. veins at 45° to core scattered Py and Po throughout	J.P.98	3.0	Tr			
132.8-135.0	Mostly well min. dike, with qtz. threads (Py)	J.P.99	2.7	Nil			
135.0-137.5	4" qtz. vein at 60° to core Coarse cubes Py in dike	J.P.100	2.5	Nil			

MINING ENGINEERS LIMITED, TORONTO STOCK FORM NO. 501 REV. 4-44

DRILLED BY

SIGNED

PROPERTY EAGLELUND MINES LIMITED

HOLE NUMBER

SHEET NUMBER 12

DIAMOND DRILL RECORD

SECTION FROM TO

LOCATION: LAT.
 DEP.

STARTED

ELEVATION OF COLLAR

COMPLETED

DATUM

ULTIMATE DEPTH

DIRECTION AT START: BEARING

PROPOSED DEPTH

DEPTH FEET	FORMATION	SAMPLE NO	WIDTH OF SAMPLE	GOLD \$	SLUDGE GOLD \$			
137.5-139.1	14" white milky qtz. plus threads fair Py along vein walls	J.P.101	1.6	Nil				
139.1-142.1	7" white qtz. at 30° to core plus 2 - 1" strgs. Coarse Py. Zns. Po.	J.P.102	3.0	Nil				
146.0-149.0	16", 2" 1" white qtz. coarse cubes Py in dike and walls of veins	J.P.103	3.0	Nil				
149.0-150.5	40% qtz. in stringers, coarse Py in qtz. and dike	J.P.104	1.5	Nil				
150.5-153.7	Well min. dike with qtz. strgs. (1" max. width) good Py.	J.P.105	3.2	0.03				

THE MINER PRESS LIMITED TORONTO STOCK FORM NO. 501 REV. 8-44

DRILLED BY

SIGNED

PROPERTY EAGLELUND MINES LIMITED

HOLE NUMBER J.P.8

SHEET NUMBER 13

SECTION FROM TO

DIAMOND DRILL RECORD

LOCATION: LAT
 DEP.
 ELEVATION OF COLLAR
 DATUM
 DIRECTION AT START: BEARING
 DIP

STARTED
 COMPLETED
 ULTIMATE DEPTH
 PROPOSED DEPTH

DEPTH FEET	FORMATION	SAMPLE NO.	WIDTH OF SAMPLE	GOLD \$	SLUDGE GOLD \$			
164.0-167.0	Several qtz. stringers (2" max) at 45° to core, scattered coarse Py	J.P.108	3.0	Nil				
167.0-170.0	4" and 2" qtz. strg. at 45° to core, scattered coarse cubes Py	J.P.109	3.0	Nil				
170.0-174.0	2" and 2 - 1" qtz. strgs. plus bluish qtz. threads, fine and coarse Py.Po	J.P.110	4.0	Tr.				
174.0-175.5	7" qtz. vein at 45° to core Massive pyrite Po. V.G at 175.0'	J.P.66	1.5	0.25				
175.5-178.0	10" and 6" white qtz. veins at 45° to core Good Py. Po and Zns in qtz.	J.P.111	2.5	0.34				

DRILLED BY

SIGNED

PROPERTY EAGLELUND MINES LIMITED

HOLE NUMBER

SHEET NUMBER 14

DIAMOND DRILL RECORD

SECTION FROM TO

LOCATION: LAT.
 DEP.

STARTED

ELEVATION OF COLLAR

COMPLETED

DATUM

ULTIMATE DEPTH

DIRECTION AT START: BEARING
 DIP

PROPOSED DEPTH

DEPTH FEET	FORMATION	SAMPLE NO	WIDTH OF SAMPLE	GOLD \$	SLUDGE GOLD \$		
178.0-181.0	2 - 1/2" quartz strgs. massive Po fine disseminated Py in dike	J.P.112	3.0	Nil			
183.0-185.0	White milky qtz. slight Py along walls	J.P.114	2.0	Nil			
189.0-192.0	4" and 3" strg. fair Py in qtz. and dike (course)	J.P.115	3.0	0.02			
192.0-195.0	3 - 3" qtz. strgs. good Py and little Po in qtz. and dike	J.P.116	3.0	Tr			
195.0-197.0	7" and 2" white qtz. veins fair Py, little tourmaline and illmenite.	J.P.117	2.0	0.12			

NORTHEN MINER PRESS LIMITED, TORONTO STOCK FORM NO. 801 REV. 8-44

DRILLED BY

SIGNED

PROPERTY EAGLELUND MINES LIMITED

HOLE NUMBER

SHEET NUMBER 15

DIAMOND DRILL RECORD

SECTION FROM TO

LOCATION: LAT.....
 DEP.....
 ELEVATION OF COLLAR.....
 DATUM.....
 DIRECTION AT START: BEARING.....
 DIP.....

STARTED.....
 COMPLETED.....
 ULTIMATE DEPTH.....
 PROPOSED DEPTH.....

DEPTH FEET	FORMATION	SAMPLE NO	WIDTH OF SAMPLE	GOLD \$	SLUDGE GOLD \$
197.0-199.5	90% white milky qtz. coarse Py in patches	J.P.118	2.5	0.04	
199.5-203.0	Quartz threads and strgs. 2" max. width Fair Py some illmenite at 202.8	J.P.119	3.5	0.04	
203.0-205.4	Includes 9" white milky qtz. at 80° to core (50% qtz) scattered Py in qtz.&dike	J.P.120	2.4	Nil	
205.4-207.4	White milky qtz. vein sparse min. some fine Py	J.P.121	2.0	Nil	
207.4-210.4	Irreg. qtz. strgs. 3" max. width scattered Py in patches	J.P.122	3.0	Nil	

AGRI-MINER PRESS LIMITED, TORONTO, STOCK FORM NO. 501 REV. 5-44

DRILLED BY

SIGNED

PROPERTY EAGLELUND MINES LIMITED

HOLE NUMBER

SHEET NUMBER 16

DIAMOND DRILL RECORD

SECTION FROM TO

LOCATION: LAT.....
 DEP.....
 ELEVATION OF COLLAR.....
 DATUM.....
 DIRECTION AT START: BEARING.....
 DIP.....

STARTED

COMPLETED.....

ULTIMATE DEPTH.....

PROPOSED DEPTH.....

DEPTH FEET	FORMATION	SAMPLE NO	WIDTH OF SAMPLE	GOLD \$	SLUDGE GOLD \$
210.4-212.9	80% white milky qtz. slight Py in patches	J.P.123	2.5	Nil	
216.2-218.0	4" and 3" qtz. strgs. Mass. Py and Po along stringer walls	J.P.124	1.8	Nil	
222.0-224.1	80% white milky qtz. Patches coarse Pyrite in qtz. and dike	J.P.125	2.1	Nil	
224.1-226.3	6" white qtz. vein plus threads Fine Py	J.P.126	2.2	Nil	
226.3-230.0	Series of qtz. stringers, 3" max. width Coarse Py in dike	J.P.127	3.7	Nil	

NORTHERN MINER PRESS LIMITED, TORONTO. STOCK FORM NO. 801 REV. 8-14

DRILLED BY

SIGNED

PROPERTY EAGLELUND MINES LIMITED

HOLE NUMBER

SHEET NUMBER 17

DIAMOND DRILL RECORD

SECTION FROM TO

LOCATION: LAT.....
 DEP.....
 ELEVATION OF COLLAR.....
 DATUM.....
 DIRECTION AT START: BEARING.....
 DIP.....

STARTED.....
 COMPLETED.....
 ULTIMATE DEPTH.....
 PROPOSED DEPTH.....

DEPTH FEET	FORMATION	SAMPLE No	WIDTH OF SAMPLE	GOLD \$	SLUDGE GOLD \$		
230.0-231.8	18" white milky qtz. at 30° to core, sparse min.	J.P.128	1.8	Nil			
231.8-235.0	4" qtz. vein at 30° to core plus strgs. (irreg) fair Py(N.B. Footage 2' ahead in box)	J.P.129	3.2	Nil			
235.0-238.0	4" and 2 - 2" qtz. strgs. at 45° to core Scattered coarse Py a little Po.	J.P.130	3.0	Nil			
238.0-240.0	4" and 2" qtz. strgs. Good Py and Po	J.P.131	2.0	Nil			
240.0-242.0	Irreg. qtz. threads, Massive coarse Py, Po throughout, some tourmaline and illmenite	J.P.132	2.0	Tr			

SOUTHERN MINER PRESS LIMITED, TORONTO STOCK FORM NO. 501 REV. 9-44

DRILLED BY

SIGNED

PROPERTY EAGLELUND MINES LIMITED

HOLE NUMBER

SHEET NUMBER 18

DIAMOND DRILL RECORD

SECTION FROM TO

LOCATION: LAT.....
 DEP.....
 ELEVATION OF COLLAR

DATUM

DIRECTION AT START: BEARING

DIP

STARTED

COMPLETED

ULTIMATE DEPTH

PROPOSED DEPTH

DEPTH FEET	FORMATION	SAMPLE NO	WIDTH OF SAMPLE	GOLD \$	SLUDGE GOLD \$
242.0-244.0	16" qtz. vein plus strgs. slight Py in qtz and dike	J.P.133	2.0	Nil	
244.0-247.0	4" and 2" qtz. strgs. good Py, Po and some illmenite	J.P.134	3.0	Nil	
247.0-250.1	Few qtz. threads plus altered min. dike coarse Py	J.P.135	3.1	Nil	
250.1-251.6	Min. dike, fine dissem. Py	J.P.136	1.5	Nil	
251.6-253.3	12" white milky qtz. slight Py in dike	J.P.137	1.7	Nil	

NORTHERN MINER PRESS LIMITED, TORONTO STOCK FORM NO 501 REV 9-44

DRILLED BY

SIGNED

PROPERTY EAGLELUND MINES LIMITED

HOLE NUMBER

SHEET NUMBER 19

DIAMOND DRILL RECORD

SECTION FROM TO

LOCATION: LAT.....
 DEP.....
 ELEVATION OF COLLAR

DATUM

DIRECTION AT START: BEARING

DIP

STARTED

COMPLETED

ULTIMATE DEPTH

PROPOSED DEPTH

DEPTH FEET	FORMATION	SAMPLE NO	WIDTH OF SAMPLE	GOLD \$	SLUDGE GOLD \$		
254 -267	Greyish highly silicious altered tuff, Scattered qtz. threads with fair Py and Po. diss. through-out						
260.0-262.5	Qtz. strgs. 1" max. good Py	J.P.138	2.5	Nil			
267.0-298	Med grained greyish tuff						
272.5	4" white qtz. at 30° to core sparse min.						
At 274.0	5" qtz. sparse min.						
298.0-305.0	Fine grained chloritic andesite						
305.0	END OF HOLE						

NORTHERN MINER PRESS LIMITED TORONTO STOCK FORM NO. 501 REV. 9-44

DRILLED BY *Boyles Bros Drilling (E) Ltd.*

SIGNED *J.D. [Signature]*

9-6-52

PROPERTY EAGLELUND MINES LIMITED

HOLE NUMBER J.P.9

SHEET NUMBER 1

SECTION FROM _____ TO _____

DIAMOND DRILL RECORD

LOCATION: LAT _____
 DEP _____
 ELEVATION OF COLLAR _____
 DATUM A / O - 150' on B.L.
 DIRECTION AT START: BEARING S 60° W
 DIP - 50°

STARTED October 20th, 1950 7.00 A.M.
 COMPLETED October 21st, 1950 8.00 A.M.
 ULTIMATE DEPTH 177.0'
 PROPOSED DEPTH 200.0'

DEPTH FEET	FORMATION	SAMPLE NO	WIDTH OF SAMPLE	GOLD \$	SLUDGE GOLD \$		
0.0- 6.0	Casing						
6.0-110.0	Grano-diorite with numerous qtz. veins and stringers, good mineralization coarse and fine Pyrite, Pyrrhotite, little tourmaline, sphalerite and illmenite						
6.0-9.0	Qtz. threads and stringers, 2" max. width coarse Py	J.P.140	3.0	Nil			
9.0-12.0	3" and 2" qtz. strgs. at 45° to core. Good coarse Py. throughout	J.P.141	3.0	Nil			
12.0-13.8	White milky qtz. at 30° to core some chlorite inclusions. Slight Py. in patches.	J.P.142	1.8	Tr			

NORTHERN MINER PRESS LIMITED, TORONTO. STOCK FORM NO. 501 REV. 2-44

DRILLED BY _____

SIGNED _____

PROPERTY EAGLELUND MINES LIMITED

HOLE NUMBER

SHEET NUMBER 2

DIAMOND DRILL RECORD

SECTION FROM TO

LOCATION: LAT.
 DEP.

STARTED

ELEVATION OF COLLAR

COMPLETED

DATUM

ULTIMATE DEPTH

DIRECTION AT START: BEARING
 DIP

PROPOSED DEPTH

DEPTH FEET	FORMATION	SAMPLE NO	WIDTH OF SAMPLE	GOLD \$	SLUDGE GOLD \$		
13.8-16.8	Series of irreg. qtz. strgs. 1" max width Good Py in dike	J.P.143	3.0	Tr			
16.8-19.8	Irreg. series of qtz. strgs. 3" max. Coarse and fine Pyrite	J.P.144	3.0	Nil			
19.8-22.6	80% qtz. in irreg. qtz. strgs. Coarse Py in patches, a little Po	J.P.145	2.8	Nil			
22.6-25.6	8" white qtz. vein at 20° to core fine and coarse pyrite in qtz. and dike	J.P.146	3.0	Nil			
25.6-28.6	Qtz. strgs. and threads, 2" max. width coarse and fine Pyrite	J.P.147	3.0	Nil			

NORTHERN MINER PRESB LIMITED, TORONTO STOCK FORM NO. 501 REV. 9.44

DRILLED BY

SIGNED

PROPERTY EAGLELUND MINES LIMITED

HOLE NUMBER

SHEET NUMBER 3

DIAMOND DRILL RECORD

SECTION FROM TO

LOCATION: LAT.....
 DEP.....

STARTED

ELEVATION OF COLLAR

COMPLETED

DATUM

ULTIMATE DEPTH

DIRECTION AT START: BEARING

PROPOSED DEPTH

DEPTH FEET	FORMATION	SAMPLE NO	WIDTH OF SAMPLE	GOLD g	SLUDGE GOLD g		
28.6-31.6	Qtz. strgs. and threads up to 3" in width coarse Pyrite (1/2" band at 30.0')	J.P.148	3.0	0.04			
31.6-35.1	Series of qtz. strgs. at 45° to core with coarse pyrite in qtz. and dike some Po	J.P.149	3.5	0.04			
35.1-37.8	Min. dike, fair Py throughout	J.P.150	2.7	Nil			
37.8-40.8	80% qtz. in irreg. strgs. Massive pyrite in patches, Po, Zns. and illmenite	J.P.151	3.0	Tr			
40.8-43.5	1" qtz. strg. at 45° to core Fine dissem. Py in dike	J.P.152	2.7	Tr			

NORTHERN MINER PRESS LIMITED, TORONTO STOCK FORM NO. 801 REV. 9-44

DRILLED BY

SIGNED

PROPERTY EAGLELUND MINES LIMITED

HOLE NUMBER

SHEET NUMBER 4

SECTION FROM TO

DIAMOND DRILL RECORD

LOCATION: LAT.....
 DEP.....
 ELEVATION OF COLLAR.....
 DATUM.....
 BEARING.....
 DIRECTION AT START: DIP.....

STARTED.....
 COMPLETED.....
 ULTIMATE DEPTH.....
 PROPOSED DEPTH.....

DEPTH FEET	FORMATION	SAMPLE NO	WIDTH OF SAMPLE	GOLD \$	SLUDGE GOLD \$
43.5-45.3	60% qtz. in irreg. strgs. Coarse Py in patches	J.P.153	1.8	Tr	
45.3-48.3	Series of irreg. bluish qtz. threads. Fair Py (fine)	J.P.154	3.0	Nil	
48.3-51.3	Irreg. bluish qtz. strgs. Fine and coarse Py	J.P.155	3.0	Tr	
51.3-54.3	Series of qtz. strgs. 2" max. width Good coarse Py throughout	J.P.156	3.0	Tr	
54.3-57.3	Qtz. threads and strgs. Good coarse and fine Pyrite.	J.P.157	3.0	Nil	

DRILLED BY

SIGNED

PROPERTY EAGLELUND MINES LIMITED

HOLE NUMBER

SHEET NUMBER 5

DIAMOND DRILL RECORD

SECTION FROM TO

LOCATION: LAT.
 DEP.
 ELEVATION OF COLLAR
 DATUM
 DIRECTION AT START: BEARING
 DIP

STARTED
 COMPLETED
 ULTIMATE DEPTH
 PROPOSED DEPTH

DEPTH FEET	FORMATION	SAMPLE NO	WIDTH OF SAMPLE	GOLD \$	SLUDGE GOLD \$		
57.3-60.3	Irreg. qtz. threads 1" max. width Fair Py	J.P.158	3.0	Nil			
60.3-63.3	3" and 2" qtz. strgs. at 30° to core (about 40% qtz.) Good Py throughout, Dike shows more alteration and mineralization	J.P.159	3.0	0.02			
63.3-66.3	Highly silicious dike well min. with Py, Po Irreg. qtz. threads	J.P.160	3.0	0.03			
66.3-69.3	Well min. alt. dike material good coarse Pyrite, Po and a little illmenite.	J.P.161	3.0	Tr			

NORTHERN MINER PRESS LIMITED, TORONTO STOCK FORM NO. 801 REV. 8-44

DRILLED BY

SIGNED

PROPERTY EAGLELUND MINES LIMITED

HOLE NUMBER

SHEET NUMBER 6

DIAMOND DRILL RECORD

SECTION FROM TO

LOCATION: LAT.....
 DEP.....

STARTED

ELEVATION OF COLLAR

COMPLETED

DATUM

ULTIMATE DEPTH

DIRECTION AT START: BEARING.....
 DIP.....

PROPOSED DEPTH

DEPTH FEET	FORMATION	SAMPLE NO	WIDTH OF SAMPLE	GOLD \$	SLUDGE GOLD \$			
69.3-72.3	Well min. alt. dike (silicious) good Py, Po	J.P.162	3.0	Nil				
72.3-75.3	Well min. alt. dike (silicious) good Py, Po	J.P.163	3.0	Nil				
75.3-78.3	Highly silicious alt. grano-diorite Patches of Py, Po and a little illmenite	J.P.164	3.0	Nil				
78.3-81.3	Very well min. alt. grano-diorite (silicious) Mass. Py, Po, some illmenite	J.P.165	3.0	Nil				
81.3-84.3	Alt. dike. very good massive Py. Po and some illmenite	J.P.166	2.0	Nil				

NORTHMAN MINER PRESS LIMITED, TORONTO STOCK FORM NO. 801 REV. 9-44

DRILLED BY

SIGNED



52F16NE8584 52F16NE0015 KABIK LAKE

900

September 21, 1950.

Dear Mr. Smith:

We have been notified of the incorporation on June 7, 1950, of Eaglelund Gold Mines, Limited, with head office at 185 Bay Street, Toronto.

The company holds unpatented claims PA10246 to 10283, inclusive, in Pickereel Township.

"Under work already done", they say, "line cutting, thirty-eight miles". Diamond drilling was scheduled to start on September 9th.

Yours very truly,

DJF/da

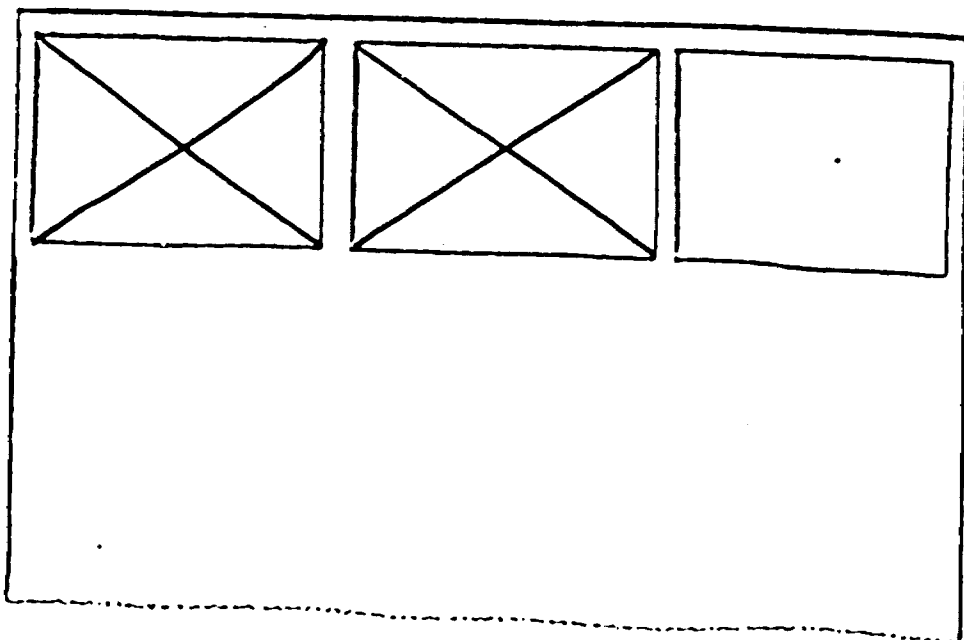
Office of the Chief Inspector of Mines.

Mr. R. L. Smith,
Inspector of Mines,
Box 310,
KENORA, Ontario.

c.c. E.O. Chisholm, ✓
Resident Geologist.

SEE ACCOMPANYING
MAP(S) IDENTIFIED AS
52 F/16 NE - 0015, #1, #2

LOCATED IN THE MAP
CHANNEL IN THE FOLLOWING
SEQUENCE (X)



Pa
10247

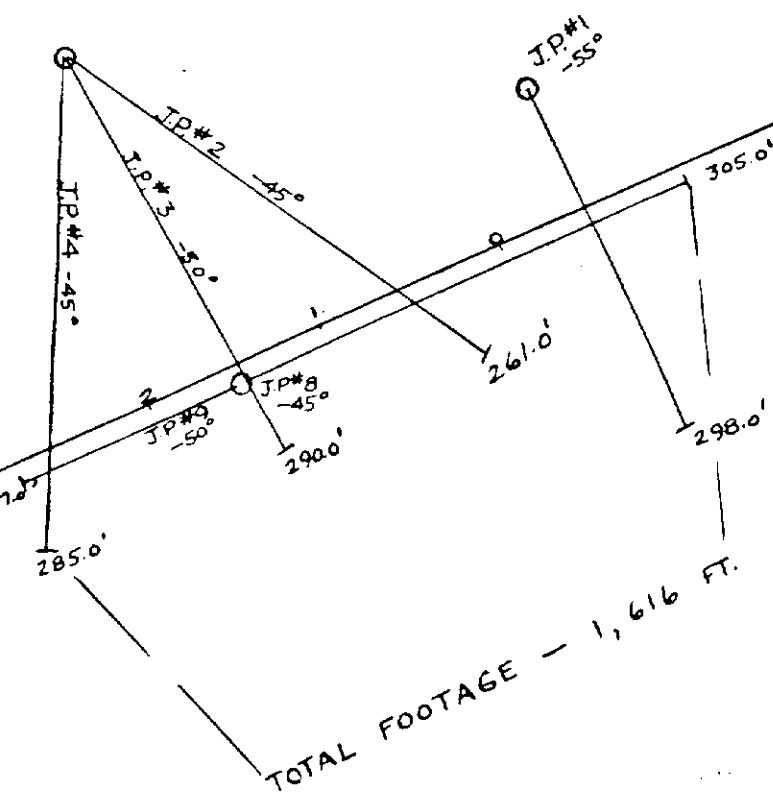
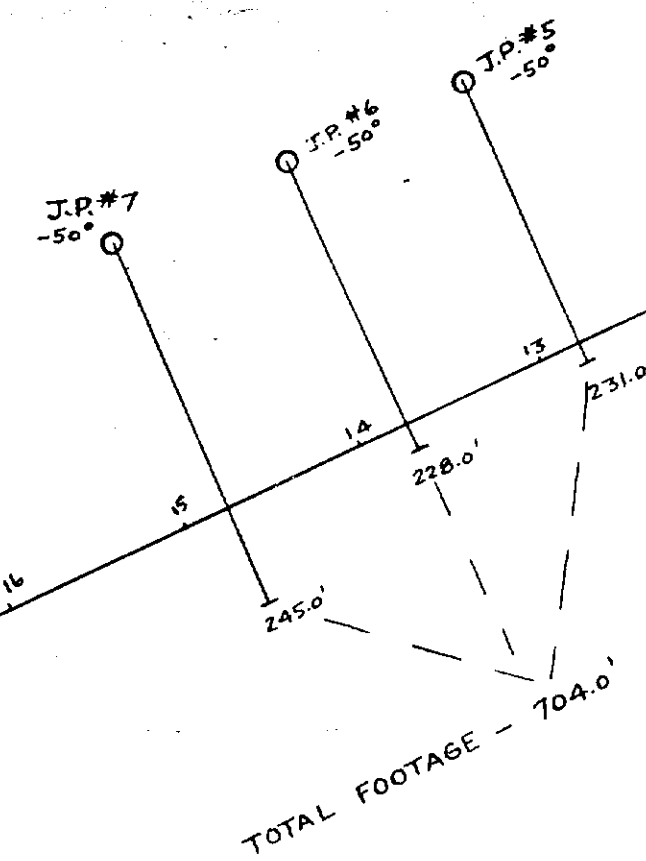
Pa 10259

Pa 10260

Pa
10253

Pa
10246

Pa
10254



BASE LINE N 60° E

EAGLELUND GOLD MINES LTD.
 PICKEREL TWP. PATRICIA DIVISION
 DIAMOND DRILLING PLAN
 SCALE 100 FEET = 1 INCH
 NOVEMBER - 1950 J.D.W.

HIGHWAY

52 F/16 NE-0015 #1

200

Pa 10248

Pa 10249

Pa 10250

