



52F16NW0057 52F16NW0014 ECHO

DIAMOND DRILLING

010

TOWNSHIP: ECHO

REPORT No.: 31

WORK PERFORMED BY: PIDGEON MOLYBDENUM MINES LIMITED

| <u>CLAIM No.</u> | <u>HOLE No.</u> | <u>FOOTAGE</u> | <u>DATE</u> | <u>NOTE</u> |
|------------------|-----------------|----------------|-------------|-------------|
| PA 532013 | 62 | 187.0 | Feb./80 | (1) |
| | 63 | 397.0 | Feb./80 | (1) |
| PA 532014 | 64 | 111.0 | Mar./80 | (1) |
| | 65 | 376.0 | Mar./80 | (1) |
| PA 532061 | 66 | 373.0 | Mar./80 | (1) |
| PA 512203 | 67 | 249.0 | Mar./80 | (1) |
| | 67A | 381.0 | Mar./80 | (1) |
| PA 512195 | 68 | 387.0 | Mar./80 | (1) |
| PA 511791 | 69 | 447.0 | Mar./80 | (1) |
| PA 532042 | 70 | 357.0 | Mar./80 | (1) |
| PA 532043 | 71 | 387.0 | Apr./80 | (1) |
| PA 532011 | 72 | 467.0 | Apr./80 | (1) |
| PA 532008 | 74 | 437.0 | Apr./80 | (1) |
| | <u>13DH</u> | <u>4556'</u> | | |

NOTES: (1) # 38-80

RIO TINTO CANADIAN EXPLORATION LIMITED
DIAMOND DRILL RECORD

LOCATION: L0+00 91+00N (old grid)

HOLE NO
62

AZIMUTH: 340°

PROPERTY: Pidgeon Molybdenum

DIP: -45° at collar

LENGTH: 187'

ELEVATION: 9985.74

CLAIM NO: 532013

STARTED: February 25, 1980

CORE SIZE: NQ

DATE LOGGED: February 26, 1980

SECTION: L0+00

COMPLETED: February 26, 1980

DIP TESTS: 42° @ 187'

LOGGED BY: K. Blewett

PURPOSE: To Test Denison Drilling
and western extension of intrusive-volcanic contact

K. Blewett

| FOOTAGE | | DESCRIPTION | SAMPLE NO | FOOTAGE | | LENGTH | | | | | | |
|---------|-------|---|-----------|---------|----|--------|--|--|--|--|--|--|
| from | to | | | from | to | | | | | | | |
| 0 | 132.0 | Casing | | | | | | | | | | |
| 132.0 | 149.3 | Granodiorite whitish (bleached) medium grained massive and homogeneous sericitic granodiorite. 5-8% coarse biotite to 137 feet. The biotite is often rimmed with pink alteration - iron stain and minor epidote increasing slightly with pink alteration at depth. Below 137 the rock lacks biotite has undergone stronger iron stain and potassic alteration and has several short shear and breccia zones. There are a few thin, 1/16" quartz veinlets intruding this rock. Minor magnetite 1% mainly in the section above 137 makes rock weakly magnetic. White quartz veins intrude rock at 139.5 (1"); 142 (2); 143.2-144.4 and 147-148.2 The rock is well fractured from 147-149.3 There is a well fractured pegmatite from 148.2-149.3 chlorite biotite and pyrite fill many of these fractures. Scattered Mo crystals also occur along fracture planes. Approximately 0.08% Mo from 148.2-149.3 2% euhedral pyrite over 5 inches at 134.3 | | | | | | | | | | |
| 149.3 | 150.5 | Aplite pink fine grained mafic poor rock moderately fractured. With a 2 inch sericite-muscovite shear zone. Pegmatite is intruding upper contact; lower contact is broken. | | | | | | | | | | |

RIO TINTO CANADIAN EXPLORATION LIMITED
DIAMOND DRILL RECORD

HOLE No:
62
PAGE No:
2

| FOOTAGE | | DESCRIPTION | SAMPLE No | FOOTAGE | | LENGTH | | | | | | |
|---------|------|---|-----------|---------|----|--------|--|--|--|--|--|--|
| from | to | | | from | to | | | | | | | |
| | | There is 2-3% fine magnetite at upper contact. There is 0.1% Mo crystals mainly confined to upper 3 inches. | | | | | | | | | | |
| 150.5 | 187 | Granodiorite similar medium grained weakly sericitic massive and homogeneous biotite granodiorite as 131.7-149.3 but slightly more quartz and there is more epidote alteration around the biotite. There are several pink aplite sections at 161.3-161.9 and 162.3-166.8 contains minor pegmatite and granodiorite. This section is possibly an alteration phase of the granodiorite rather than an aplite intrusion. There is a fractured white quartz vein from 151.5-154.3 contacts are broken. There is 10% pyrite over 2 inches at upper contact. From 154.3-156.4 the granodiorite is finer grained undergone potassic and sericitic alteration and has $\leq .1\%$ mo and 0.5-1% magnetite. There are several thin quartz veins $\leq \frac{1}{4}$ " intruding this granodiorite. Minor pyrite and magnetic in this section with numerous large pyrite cubes and blebs to $\frac{1}{2}$ " from 175.5-179.6. This pyrite appears to be associated with some late fractures and occasional quartz veins. Also there are numerous vugs in this section. | | | | | | | | | | |
| | 187/ | E.O.H. Casing Pulled | | | | | | | | | | |
| | | Bradley Bros. Diamond Drilling | | | | | | | | | | |

PATRICIA
MINING DIV.
R R G A W S D
JUL - 7 1980
AM 7:00 PM 1:23:45B

RIO TINTO CANADIAN EXPLORATION LIMITED
DIAMOND DRILL RECORD

LOCATION: L0+00 89+00N (old grid)

HOLE NO
63

AZIMUTH: 340°

PROPERTY: PIGEON MOLYBDENUM

DIP: -45° at collar

LENGTH: 397'

ELEVATION: 9989.47

CLAIM NO: Pa 532013

STARTED: February 27, 1980

CORE SIZE: NQ

DATE LOGGED: March 1, 1980

SECTION: L0+00

COMPLETED: February 29, 1980

DIP TESTS: 42° @ 200'
@ 400'

LOGGED BY: K. Blewett

PURPOSE: To Intersect Volcanic/Granite Contact
at 100' Vertical Elevation

K. Blewett

| FOOTAGE | | DESCRIPTION | SAMPLE NO | FOOTAGE | | LENGTH | | | | | | |
|---------|------|--|-----------|---------|----|--------|--|--|--|--|--|--|
| from | to | | | from | to | | | | | | | |
| 0 | 74.4 | Casing | | | | | | | | | | |
| 74.4 | 174 | Andesite tuff fine grained green chlorite schist. The rock is moderately fractured with chlorite epidote and minor quartz filling some fractures. The rock is foliated 80°-90° with thin laminae and biotite bands to 1cm wide also at 80-90°. Biotite rich shear zones occur at 100-101.1; 119-121.5. Quartz veins occur at 80.3 (2"); 95.8 (1" with 4% pyrrhotite); 110 3" with 5% pyrrhotite minor chalcopryrite; 115-116.1 2% pyrite-pyrrhotite minor chalcopryrite A fine grained grey granitic intrusion occurs from 126.5-128.8; 152.2-152.8; 157.2-158.1; 164.3 (2") 1% fine disseminated pyrrhotite along foliation plane makes this core weakly magnetic. There are also minor pyrite-pyrrhotite lenses .4cm wide cross cutting core. 142.3-144.9 diabase less schistose slightly coarser grained green rock. Contacts arbitrary. 147.6-148.5 diabase same as 142.3-144.9 | | | | | | | | | | |

RIO TINTO CANADIAN EXPLORATION LIMITED

DIAMOND DRILL RECORD

HOLE No:

63

PAGE No:

2

| FOOTAGE | | DESCRIPTION | SAMPLE No | FOOTAGE | | LENGTH | | | | | | | |
|---------|-------|--|-----------|---------|----|--------|--|--|--|--|--|--|--|
| from | to | | | from | to | | | | | | | | |
| | | 169.8 4" quartz vein with 10% pyrite | | | | | | | | | | | |
| | | 171.5-174 increase in epidote | | | | | | | | | | | |
| 174 | 200.5 | Granodiorite and quartz pink medium grained weakly sericitic granodiorite. There is 5% biotite which is weakly altered to chlorite and epidote. The upper contact is broken and chlorite-magnetite rich. The granodiorite contains minor euhedral to anhedral pyrite and up to 2-3% localized magnetite. Numerous Mo crystals occur at the upper contact over a 10" width. Minor Mo crystals occur in the granodiorite and several fracture fillings and blebs containing considerable Mo occur at granodiorite quartz contacts. | | | | | | | | | | | |
| | | 174-175 0.3% Mo in granodiorite | | | | | | | | | | | |
| | | 175-176.7 pegmatite and quartz, no mo | | | | | | | | | | | |
| | | 176.7-178 granodiorite 3-4% magnetite numerous mo crystals 0.09% | | | | | | | | | | | |
| | | 178-183.6 Quartz and minor pegmatite upper contact broken lower contact at 15° 3-4% pyrite at lower contact. Minor magnetite and a few scattered mo crystals in this section 0.03% mo. | | | | | | | | | | | |
| | | 183.6-184.5 Aplite 5% pyrite in fractures. 0.04% Mo | | | | | | | | | | | |
| | | 186-189.3 Quartz-pegmatite upper contact 25° lower contact 10° to C.A. Several vugs; several large pyrite blebs No mo. | | | | | | | | | | | |
| | | 189.3-191 bleached granodiorite 2% pyrite occasional mo crystals 0.03% mo | | | | | | | | | | | |

RIO TINTO CANADIAN EXPLORATION LIMITED
DIAMOND DRILL RECORD

HOLE NO:
63
PAGE NO:
3

| FOOTAGE | | DESCRIPTION | SAMPLE NO | FOOTAGE | | LENGTH | | | | | | | | | | | | | | | |
|---------|-------|---|-----------|---------|----|--------|--|--|--|--|--|--|--|--|--|--|--|--|--|--|--|
| from | to | | | from | to | | | | | | | | | | | | | | | | |
| | | 191-200.5 Quartz with minor pegmatite and minor fine grained granodiorite minor pyrite several localized pods containing numerous mo crystals. | | | | | | | | | | | | | | | | | | | |
| | | 1/16" fracture filled with mo at 195. This section contains minor magnetite and 0.09% mo | | | | | | | | | | | | | | | | | | | |
| 200.5 | 212 | Aplite and quartz this section is composed primarily of fine grained pink aplite with minor irregular quartz intrusion. Contacts are 20°-25° to C.A. There is a 1/2" pyrite vein at lower contact. 3% magnetite at upper contact with scattered magnetite throughout aplite. Scattered mo crystals throughout - 0.06% mo | | | | | | | | | | | | | | | | | | | |
| 212 | 297.5 | Granodiorite pink medium grained rock. 5% biotite which is weakly altered to chlorite and epidote. The rock is intruded by occasional quartz-pegmatite and aplite dykes. Occasional vugs. Magnetite very minor. Occasional pyrite bleb and lense in the core. Few mo crystals scattered in core. Occasional, more concentrated cluster of mo. | | | | | | | | | | | | | | | | | | | |
| | | 212-235.5 Pink altered and weakly bleached granodiorite with quartz and pegmatite and minor aplite. 1% magnetite | | | | | | | | | | | | | | | | | | | |
| | | 213.5 3" aplite-contacts broken - 0.3% mo | | | | | | | | | | | | | | | | | | | |
| | | 214.5 1/16" fracture coated with mo | | | | | | | | | | | | | | | | | | | |
| | | 216.3-216.7 altered granodiorite and minor pegmatite. 0.4% mo | | | | | | | | | | | | | | | | | | | |
| | | 219 one speck mo | | | | | | | | | | | | | | | | | | | |

RIO TINTO CANADIAN EXPLORATION LIMITED
DIAMOND DRILL RECORD

HOLE No:

63

PAGE No:

4

| FOOTAGE | | DESCRIPTION | SAMPLE No | FOOTAGE | | LENGTH | | | | | | |
|---------|----|--|-----------|---------|----|--------|--|--|--|--|--|--|
| from | to | | | from | to | | | | | | | |
| | | 219.8 - 1/16" - 1/8" fracture filled with mo at contact with quartz intrusion. | | | | | | | | | | |
| | | 219.8-220.5 0.09% mo | | | | | | | | | | |
| | | 221.6-222 0.04% mo in granodiorite | | | | | | | | | | |
| | | 222-223 pegmatite and quartz | | | | | | | | | | |
| | | 223-230 white quartz vein minor pegmatite | | | | | | | | | | |
| | | 230-235.3 well altered and bleached granodiorite. Minor quartz at 232.3 (4") and 233.3 2" | | | | | | | | | | |
| | | 232.4-233.5 several mo crystals 0.08% mo | | | | | | | | | | |
| | | 235.5-237.3 greyish aplite contacts at 70°-80° to C.A. very fine grained mafic poor rock. 1% pyrite no mo. This section possibly represents sheared granodiorite | | | | | | | | | | |
| | | Below 237.3 the granodiorite is generally pinkish but not as bleached. | | | | | | | | | | |
| | | 248.6-249.5 0.1% mo in granodiorite. | | | | | | | | | | |
| | | 249.7 2" quartz vein 60° to C.A. | | | | | | | | | | |
| | | 250.3 several Mo crystals over 5" | | | | | | | | | | |
| | | 252.2-258 slightly bleached granodiorite with minor quartz and pegmatite trace Mo. 0.009% | | | | | | | | | | |
| | | 260-261.7 0.09% mo in granodiorite | | | | | | | | | | |

RIO TINTO CANADIAN EXPLORATION LIMITED
DIAMOND DRILL RECORD

HOLE NO:

63

PAGE NO:

5

| FOOTAGE | | DESCRIPTION | SAMPLE NO | FOOTAGE | | LENGTH | | | | | | | | | | | | | | | |
|---------|----|---|-----------|---------|----|--------|--|--|--|--|--|--|--|--|--|--|--|--|--|--|--|
| from | to | | | from | to | | | | | | | | | | | | | | | | |
| | | 261.7-263 Aplite with 3" of quartz aplite at upper contact. Lower contact 80° to C.A. 0.07% mo | | | | | | | | | | | | | | | | | | | |
| | | 267.5 3" quartz vein 2% pyrite 268.7-269 quartz vein 80° to C.A. 5% pyrite 1% magnetite 273.1 one mo crystal in grano- | | | | | | | | | | | | | | | | | | | |
| | | diorite 273.5-279.7 Quartz pegmatite vuggy fractured 1% pyrite minor magnetite contacts 10° to C.A. No mo. | | | | | | | | | | | | | | | | | | | |
| | | 280.5 3% fine euhedral pyrite over 5" 281.6-283.5 several scattered No crystals 0.07%; several fractures - minor pegmatite in this section. | | | | | | | | | | | | | | | | | | | |
| | | 284.5-285.3 quartz vein contacts broken. The quartz vein is fractured and has iron stain on many of the fractures. | | | | | | | | | | | | | | | | | | | |
| | | 285.3-285.7 pink granodiorite lower contact 25° to C.A. several mo crystals at lower contact. 0.02% mo | | | | | | | | | | | | | | | | | | | |
| | | 285.7-289.0 white quartz vein with minor pegmatite at lower contact. Contacts broken. No mo. 1% pyrite in pegmatite | | | | | | | | | | | | | | | | | | | |
| | | 289.4 5% pyrite minor malachite stain and several mo crystals in fracture | | | | | | | | | | | | | | | | | | | |

RIO TINTO CANADIAN EXPLORATION LIMITED
DIAMOND DRILL RECORD

| |
|----------------|
| HOLE NO: 63 |
| PAGE NO: 6 |

| FOOTAGE | | DESCRIPTION | SAMPLE NO | FOOTAGE | | LENGTH | | | | | | |
|---------|-------|--|--------------|---------|----|--------|--|--|--|--|--|--|
| from | to | | | from | to | | | | | | | |
| | | 290.4-291 Quartz vein 30° to C.A. 2% pyrite | | | | | | | | | | |
| | | 292.3 Several mo crystals in broken pegmatite 3% pyrite 1% magnetite | | | | | | | | | | |
| | | 292.5 3" quartz vein | | | | | | | | | | |
| | | 293.0-294.7 Several mo crystals in granodiorite | | | | | | | | | | |
| | | 296-297.5 Quartz pegmatite in | | | | | | | | | | |
| 297.5 | 312.1 | Granodiorite grey medium grained rock occasional slightly finer grained and mafic poor section. Upper contact 75° to C.A. lower contact broken. From 308.9-312.1 the rock becomes increasingly pink probably due to the underlying pegmatite. The grey agranodiorite is weakly sericitic has minor epidote, pyrite and magnetite. No mo. | | | | | | | | | | |
| 312.1 | 337 | Quartz-Pegmatite contacts broken. Pink coarse grained pegmatite and massive white quartz. This zone is fractured with chlorite and pyrite filling. Some fractures, a large bleb of pyrite is also fractured indicating that this fracturing event is post sulphide mineralization. No mo. | | | | | | | | | | |
| 337 | 397 | Granodiorite pink granodiorite medium grained rock with 5% biotite. Little to no chlorite and minor epidote very weak localized sericite alteration. Intruded by minor quartz-pegmatite and aplite dykes | | | | | | | | | | |
| | | 347.4-348.4 quartz vein with minor pegmatite contacts broken. One large pyrite cube 3/4" | | | | | | | | | | |

RIO TINTO CANADIAN EXPLORATION LIMITED
DIAMOND DRILL RECORD

| |
|----------------|
| HOLE No: 63 |
| PAGE No: 7 |

| FOOTAGE | | DESCRIPTION | SAMPLE No | FOOTAGE | | LENGTH | | | | | | |
|---------|-------|---|--------------|---------|----|--------|--|--|--|--|--|--|
| from | to | | | from | to | | | | | | | |
| | | 356.7-358.6 Aplite pink fine grained rock Upper contact broken, lower contact 70° 70° to C.A. Several fine Mo crystals 0.01% Mo. | | | | | | | | | | |
| | | 359.8 1" quartz vein on Mo crystals in granodiorite near quartz contact. | | | | | | | | | | |
| | | 369.3-370.7 weakly sheared granodiorite slightly finer grained and foliated 90° to C.A. Minor chlorite in fractures. | | | | | | | | | | |
| | | 379 2" quartz vein 75° to C.A. epidote filling. Some fractures 5% fine euhedral pyrite | | | | | | | | | | |
| | | 387 2" quartz vein 45° to C.A. 1% pyrite | | | | | | | | | | |
| | | 389 4" quartz vein 80° to C.A. Several large pyrite cubes | | | | | | | | | | |
| | | 393.6-394.4 Several fractures 1/8"-1/4" wide filled with biotite. | | | | | | | | | | |
| | | 395.6-397 Quartz-pegmatite and minor granodiorite. Upper contact 60° to C.A. 1% pyrite No mo. | | | | | | | | | | |
| | 397 ✓ | E.O.H. | | | | | | | | | | |
| | | Casing Pulled (30 ft. casing lost in hole) | | | | | | | | | | |
| | | BRADLEY BROS. DIAMOND DRILLING. | | | | | | | | | | |

PATRICIA
 MINING DIV.
 REGISTERED
 JUL - 7 1980
 AM 708500 2123458 PM

RIO TINTO CANADIAN EXPLORATION LIMITED

DIAMOND DRILL RECORD

LOCATION: L180E 88+50N

AZIMUTH: 340°

DIP: -45° at collar

LENGTH: 111'

ELEVATION: 10,007.50

CLAIM NO: Pa 532014

STARTED: March 2, 1980

CORE SIZE: NQ

DATE LOGGED: March 14, 1980

SECTION: L180E

COMPLETED: March 3, 1980

DIP TESTS: 42.5° @ 111'

LOGGED BY: K. Blewett

HOLE NO
DDH 64

PROPERTY: PIDGEON MOLYBDENUM

PURPOSE: To test 200' mineralized shell in granodiorite below the Volcanic/Granite contact

K. Blewett

| FOOTAGE | | DESCRIPTION | SAMPLE NO | FOOTAGE | | LENGTH | | | | | | | |
|---------|------|---|-----------|---------|----|--------|--|--|--|--|--|--|--|
| from | to | | | from | to | | | | | | | | |
| 0 | 46 | Casing | | | | | | | | | | | |
| 46 | 53.2 | Granodiorite pink medium grained biotite homogeneous granodiorite epidote is surrounding biotite and some sulphides. Minor pyrite minor magnetite and occasional quartz. Lower contact 55° at a quartz vein. There the rock is weakly sericitic. | | | | | | | | | | | |
| 53.2 | 59.5 | Aplite pink fine grained mafic poor rock. There is an 8" quartz vein at upper contact with hematite stain. 1% pyrite minor Mo crystal 0.009% mo; lower contact 55° to C.A. | | | | | | | | | | | |
| | | 55.2-56.5 granodiorite inclusion lower contact 85° to C.A. at a 1/2" quartz vein. | | | | | | | | | | | |
| 59.5 | 66.6 | Granodiorite pink medium grained granodiorite becoming greyer towards lower contact. 5% biotite altering to chlorite and epidote. There is weak pervasive sericite alteration minor pyrite disseminated and in fractures. Minor magnetite. No mo. | | | | | | | | | | | |

RIO TINTO CANADIAN EXPLORATION LIMITED
DIAMOND DRILL RECORD

| |
|----------------|
| HOLE No: 64 |
| PAGE No 2 |

| FOOTAGE | | DESCRIPTION | SAMPLE No | FOOTAGE | | LENGTH | | | | | | |
|---------|------|---|--------------|---------|----|--------|--|--|--|--|--|--|
| from | to | | | from | to | | | | | | | |
| 66.6 | 78.6 | Aplite pink but bleached fine grained mafic poor rock. Upper contact 90° to core, lower contact broken. Weakly sericitic with occasional biotite sericite fracture coating. One crystal of mo seen 0.008% Mo 1% pyrite. | | | | | | | | | | |
| | | 75.2-77 granodiorite. Upper contact 80° lower contact at a quartz vein. | | | | | | | | | | |
| 78.6 | 84 | Granodiorite medium grained homogenous rock 5% biotite-chlorite-epidote. Weak sericite alteration. Upper contact broken lower contact 60° to C.A. | | | | | | | | | | |
| 84 | 86.9 | Aplite with pegmatite fine grained whitish pink mafic poor rock. Lower contact 65° to C.A. There is an inclusion of granodiorite at the upper contact. 84.3 1" pegmatite minor quartz and calcareous material. 84.6 one mo crystal 85-85.4 pegmatite - large pink feldspar phenocrysts 60° to C.A. minor muscovite and sericite in some fractures. 86 large bleb of pyrite 1" 86.1 4" pink pegmatite coarse feldspar crystals 45° to C.A. The host rock has undergone sericite alteration near pegmatite contacts. | | | | | | | | | | |
| 86.9 | 98.7 | Granodiorite pink fine to medium grained granodiorite. Minor magnetite and occasional bleb of pyrite. weakly | | | | | | | | | | |

RIO TINTO CANADIAN EXPLORATION LIMITED

DIAMOND DRILL RECORD

HOLE NO:

64

PAGE NO:

3

| FOOTAGE | | DESCRIPTION | SAMPLE NO | FOOTAGE | | LENGTH |
|---------|-------|---|-----------|---------|----|--------|
| from | to | | | from | to | |
| | | sericitic. | | | | |
| | | 91.6-94 Aplite fine grained mafic poor grey rock. Upper contact 70°. 1% disseminated pyrite. | | | | |
| 98.7 | 103.6 | Aplite fine to slightly coarser grained mafic poor rock with 1% epidote. Upper lower contacts appears gradational. 1% epidote minor pyrite. | | | | |
| | | 103.4 4" white quartz vein 25° to C.A. | | | | |
| | | 103.7-103.4 pink aplite with 1% pyrite an several mo crystals 0.08% mo. | | | | |
| | | 103.7-103.9 quartz vein | | | | |
| 103.6 | 109.8 | Granodiorite medium grained homogeneous weakly sericitic and weakly bleached towards upper contact. 1-2% pyrite No mo. | | | | |
| 109.8 | 111 | Aplite - pegmatite pink medium grained mafic poor weakly sericitic rock upper contact 75° to C.A. 1% pyrite 110 1" white quartz vein 60° to C.A. biotite-chlorite epidote along contacts. | | | | |
| | | 110.1-111 minor irregular quartz Several mo crystals 0.01% mo in aplite near quartz vein contacts | | | | |
| | 111 | End of Hole | | | | |
| | | Casing Pulled | | | | |
| | | Bradley Bros. Diamond Drilling. | | | | |

PATRICIA
MINING DIV.
RECEIVED
JUL - 1980
AN
79050002193458 PM

RIO TINTO CANADIAN EXPLORATION LIMITED
DIAMOND DRILL RECORD

| | | | | | | |
|------------|---|------------|--------------------------|--------------------|---------------|------------|
| LOCATION: | L180E 87+00N | | | MOLE NO | DDH 65 | |
| AZIMUTH: | 340° | | PROPERTY: | Pidgeon Molybdenum | | |
| DIP: | -45° at collar | LENGTH: | 376' | ELEVATION: | 9999.49 | |
| STARTED: | March 4, 1980 | CORE SIZE: | NQ | DATE LOGGED: | March 7, 1980 | |
| COMPLETED: | March 6, 1980 | DIP TESTS: | 41° @ 150' 41° @ 376' | SECTION: | L180E | |
| PURPOSE: | To test granite contact at 100' vertical elevation at west side of old Denison Drilling | | | | LOGGED BY: | K. Blewett |

K. Blewett

| FOOTAGE | | DESCRIPTION | SAMPLE NO | FOOTAGE | | LENGTH | | | | | | |
|---------|-----|--|-----------|---------|----|--------|--|--|--|--|--|--|
| from | to | | | from | to | | | | | | | |
| 0 | 30 | Casing | | | | | | | | | | |
| 30 | 164 | Andesite tuff fine grained green chlorite schist with up to 5% biotite and numerous thin biotite bands generally < 1/2" wide. Biotite banding and foliation is 70°-80° to core axis. The rock is moderately to weakly fractured with quartz chlorite and biotite filling some fractures. Epidote is associated with quartz fracture fillings and also in haphazard fractures. Below 66.7 the rock is slightly less schistose and has less biotite and is slightly harder - possibly a diabase. There is only minor pyrite and pyrrhotite in this rock. The pyrrhotite makes the rock weakly magnetic.. | | | | | | | | | | |
| | | 33.6 4" quartz vein sharp contacts at 70° to core. There is a 3/4" biotite-chlorite band - probably and inclusion of andesite minor pyrrhotite trace chalcopryite. | | | | | | | | | | |
| | | 44.3-45 Feldspar porphyry dyke upper contact 65° lower contact 75° 10% white feldspar phenocrysts 1/16" in | | | | | | | | | | |

RIO TINTO CANADIAN EXPLORATION LIMITED
DIAMOND DRILL RECORD

| |
|----------------|
| MOLE NO: 65 |
| PAGE NO: 2 |

| FOOTAGE | | DESCRIPTION | SAMPLE NO | FOOTAGE | | LENGTH |
|---------|----|--|-----------|---------|----|--------|
| from | to | | | from | to | |
| | | a feldspar quartz biotite matrix. The andesite at the feldspar porphyry contacts is very chloritic and biotite rich. | | | | |
| | | 56.7-57.2 Quartz chlorite biotite epidote fracture zone. Well fractured. 3% large pyrrhotite blebs 1% pyrite | | | | |
| | | 73-73.5 white quartz vein upper contact 60° to core lower contact irregular - has numerous andesite inclusions. | | | | |
| | | 77.0-77.9 metagabbro upper contact gradational lower contact 75° to C.A. Medium to coarse amphibole crystals weakly foliated with 3-5% biotite between the amphibole grains. Weakly magnetic. | | | | |
| | | 81 - 83 fracture zone | | | | |
| | | 84.1-87.7 white quartz vein contacts sharp at 25°; moderately fractured There is a 4" inclusion of andesite at 85.5. From 86.2-87.7 there is 2% pyrite and 3% pyrrhotite along foliation planes. | | | | |
| | | 90 - 92.1 metagabbro similar to 77.0 to 77.9 but not as much biotite. Upper contact 80° lower contact 70° to C.A. medium grained amphibole phenocrysts with epidote | | | | |

RIO TINTO CANADIAN EXPLORATION LIMITED
DIAMOND DRILL RECORD

MOLE NO:
65
PAGE NO:
4

| FOOTAGE | | DESCRIPTION | SAMPLE NO | FOOTAGE | | LENGTH | | | | |
|---------|-------|--|-----------|---------|----|--------|--|--|--|--|
| from | to | | | from | to | | | | | |
| | | 159.7-161.6 chlorite rich zone, vuggy some amphibole phenocrysts | | | | | | | | |
| | | 163-164 fractured chloritic rock with irregular white to pink quartz feldspar veinlets. 1% fluorite some euhedral crys- tals 0.008% Mo. | | | | | | | | |
| 164 | 168.3 | Quartz vein white massive fractured quartz vein with 3" zone of pink pegmatite at lower contact. Contacts are broken Minor fine grained euhedral pyrite disseminated in quartz. Also very minor disseminated fine mo crystals mainly above 166. Average 0.01% Mo | | | | | | | | |
| | | 165.1 chloritic fracture with minor pink feldspar. .5% pyrite numerous mo crystals. The fracture is 1/16" wide and at 35° to C.A. | | | | | | | | |
| | | 168.0-168.3 pegmatite relationship to quartz not clear contact is irregular but sharp. Two chlorite blebs and small clusters of mo. | | | | | | | | |
| 168.3 | 170 | Andesite chlorite schist to gneiss. Well altered green fine grained rock occasional kink band, epidote and quartz in fractures minor pyrite. Contacts are broken. | | | | | | | | |
| 170 | 171.5 | Quartz-Pegmatite and aplite the contacts between the quartz-pegmatite and aplite are broken. The lower contact | | | | | | | | |

RIO TINTO CANADIAN EXPLORATION LIMITED

DIAMOND DRILL RECORD

HOLE NO:
65

PAGE NO:
5

| FOOTAGE | | DESCRIPTION | SAMPLE NO | FOOTAGE | | LENGTH | | | | | | |
|---------|-------|--|-----------|---------|----|--------|--|--|--|--|--|--|
| from | to | | | from | to | | | | | | | |
| | | is sharp at 80°. Average 0.01% M | | | | | | | | | | |
| | | 170-170.4 aplitic rock light pink | | | | | | | | | | |
| | | with several chlorite filled frac- | | | | | | | | | | |
| | | tures. No mo. | | | | | | | | | | |
| | | 170.4-171.2 quartz pegmatite the | | | | | | | | | | |
| | | quartz is possibly younger than the | | | | | | | | | | |
| | | pegmatite there is a couple of mo | | | | | | | | | | |
| | | rosettes and several scattered mo | | | | | | | | | | |
| | | crystals 0.03% mo | | | | | | | | | | |
| | | 171.2-171.5 aplite minor pyrite, no | | | | | | | | | | |
| | | mo. | | | | | | | | | | |
| 171.5 | 172.7 | Andesite well altered to a dark green | | | | | | | | | | |
| | | chlorite schist. Several kink bands | | | | | | | | | | |
| | | intruded by minor irregular quartz. | | | | | | | | | | |
| | | Several vugs minor pyrite. Trace mo. | | | | | | | | | | |
| | | 0.004% mo. Lower contact is broken. | | | | | | | | | | |
| 172.7 | 175.2 | Quartz-Pegmatite contacts are broken. | | | | | | | | | | |
| | | The pegmatite is a minor phase with | | | | | | | | | | |
| | | the quartz appearing to be intrusive | | | | | | | | | | |
| | | to the pegmatite. Several mo rosettes | | | | | | | | | | |
| | | and a thin (1/16") sericitic fracture | | | | | | | | | | |
| | | coated with mo associated with the | | | | | | | | | | |
| | | pegmatite. The entire section averages | | | | | | | | | | |
| | | 0.02% mo. | | | | | | | | | | |
| 175.2 | 119 | Andesite tuff well altered chlorite-bio- | | | | | | | | | | |
| | | tite schist foliated 45° to C.A. Con- | | | | | | | | | | |
| | | tacts are broken. | | | | | | | | | | |
| 179 | 210.8 | Granodiorite medium grained pink rock | | | | | | | | | | |
| | | with 5% biotite. The biotite is | | | | | | | | | | |
| | | chloritic and rimmed by epidote. | | | | | | | | | | |

RIO TINTO CANADIAN EXPLORATION LIMITED
DIAMOND DRILL RECORD

HOLE No:

65

PAGE No:

6

| FOOTAGE | | DESCRIPTION | SAMPLE No | FOOTAGE | | LENGTH | | | | | | |
|---------|----|--|-----------|---------|----|--------|--|--|--|--|--|--|
| from | to | | | from | to | | | | | | | |
| | | There are several quartz veins and aplite intrusions in this section. There is minor pyrite with very little mo. | | | | | | | | | | |
| | | 179-200 several white quartz veins intruding granodiorite. | | | | | | | | | | |
| | | 181-181.6 quartz vein lower contact | | | | | | | | | | |
| | | 65° to C.A. Minor pink feldspar chlorite and 1% euhedral pyrite in fractures. | | | | | | | | | | |
| | | 181.6-183.9 weakly sericitic granodiorite minor magnetite | | | | | | | | | | |
| | | 183.9-185.5 aplite-contacts broken. Minor sericite several thin white quartz veins cross cut by a chlorite filled fracture. Minor magnetite 0.5% pyrite and 0.03% mo mainly as large crystals in or adjacent to the quartz veins. | | | | | | | | | | |
| | | 185.5-189.5 quartz vein massive white fractured quartz vein with minor feldspar at 188.5. Contacts sharp at 30° to C.A. Minor chlorite in some fractures. Minor pyrite and one mo crystal in chlorite filled fracture at lower contact. No mo. | | | | | | | | | | |
| | | 189.5-196 pink very weakly sericitic granodiorite 3-4% biotite altering to chlorite epidote. Lower contact 45° epidote rich. Minor pyrite & magnetite. Several mo crystals at lower contact. Section averages 0.008% mo. | | | | | | | | | | |

RIO TINTO CANADIAN EXPLORATION LIMITED
DIAMOND DRILL RECORD

| |
|----------------|
| HOLE NO: 65 |
| PAGE NO: 7 |

| FOOTAGE | | DESCRIPTION | SAMPLE NO | FOOTAGE | | LENGTH | | | | | | |
|---------|-------|--|--------------|---------|----|--------|--|--|--|--|--|--|
| from | to | | | from | to | | | | | | | |
| | | 196-200 massive white fractured quartz vein lower contact 20° Minor pegmatite associated with fractures. | | | | | | | | | | |
| | | 200-210.8 granodiorite finer grained weakly sericitic granodiorite. Upper contact is fine grained with large biotite books and one mo crystal. Lower contact is fractured and is darker pink colour with minor quartz and 3% epidote. | | | | | | | | | | |
| 210.8 | 233.3 | Aplite - granodiorite zone. This section is comprised mainly of fine grained pink mafic poor aplitite to slightly coarser grained aplitite and weakly sericitic granodiorite. With 5% biotite altering to chlorite and epidote. Very minor mo. | | | | | | | | | | |
| | | 210.8-218.5 aplitite fine grained mafic poor pink rock gradually becoming coarser grained towards the middle. Occasional quartz bleb or veinlet with 2% pyrite minor magnetite no mo. | | | | | | | | | | |
| | | 211.4 2" wide quartz epidote vein 4% euhedral pyrite | | | | | | | | | | |
| | | 212.4 1" fracture filled with quartz epidote and 5% euhedral pyrite. | | | | | | | | | | |
| | | 214.2-215 quartz pegmatite upper contact 80° lower contact irregular. | | | | | | | | | | |

RIO TINTO CANADIAN EXPLORATION LIMITED

DIAMOND DRILL RECORD

HOLE No:

65

PAGE No:

8

| FOOTAGE | | DESCRIPTION | SAMPLE No | FOOTAGE | | LENGTH | | | | | |
|---------|-------|--|-----------|---------|----|--------|--|--|--|--|--|
| from | to | | | from | to | | | | | | |
| | | 218.5-228.5 Granodiorite with minor aplite. Lower contact is gradational. 1% fine magnetite scattered throughout the core. .5% pyrite trace mo. | | | | | | | | | |
| | | 225 2" aplite with minor quartz contact? are sharp at 50° to C.A. The aplite has not caused any metamorphism of the granodiorite at the contacts. One mo crystal in the quartz. | | | | | | | | | |
| | | 225.4 1" quartz vein at 40° to C.A. | | | | | | | | | |
| | | 226.5-227 granodiorite is becoming darker pink (potassic alteration). Several mo crystals 0.03% mo. | | | | | | | | | |
| | | 227.8 1" pink aplite 70° to C.A. | | | | | | | | | |
| | | 228.5-233.3 fine grained granodiorite-possible aplite. The rock contains 2-3% fine mafics. Upper contact has 3% fine mafics and appears gradational lower contact is weakly sheared. Minor pyrite. No mo. | | | | | | | | | |
| 233.3 | 296.2 | Granodiorite pink medium grained relatively homogeneous rock with weak localized sericite. Occasional quartz vein and aplite. Minor pyrite and magnetite and minor muscovite and hematite along fracture planes. | | | | | | | | | |
| | | 236.7-237 silicified shear fine grained sericitic quartz rich rock. | | | | | | | | | |

RIO TINTO CANADIAN EXPLORATION LIMITED
DIAMOND DRILL RECORD

HOLE NO:
65
PAGE NO:
9

| FOOTAGE | | DESCRIPTION | SAMPLE NO | FOOTAGE | | LENGTH | | | | | | |
|---------|-------|--|-----------|---------|----|--------|--|--|--|--|--|--|
| from | to | | | from | to | | | | | | | |
| - | | 244.2 3" white quartz vein 20° to core. The granodiorite is darker pink over ½" at contacts. No mo. | | | | | | | | | | |
| | | 246.3-248.2 aplite with minor quartz. The lower portion is slightly coarser grained. | | | | | | | | | | |
| | | 246.7 3" quartz vein 5-8% pyrite | | | | | | | | | | |
| | | 253.5-254.1 dark pink fine grained granodiorite to aplite. 1-2% biotite-chlorite. No mo. | | | | | | | | | | |
| | | 257.7-258.4 dark pink aplite. | | | | | | | | | | |
| | | Sharp contacts 60° to C.A. No mo. | | | | | | | | | | |
| | | 270.3-271.3 weak shear zone finer grained greyer rock with minor recrystallized white quartz and minor coarse K-feldspar along fractures 2-3% pyrite | | | | | | | | | | |
| | | 279.1 minor irregular quartz with 3% euhedral pyrite | | | | | | | | | | |
| | | 281.5-282.3 silicified fine grained light grey granodiorite possibly weakly sheared. 3% pyrite | | | | | | | | | | |
| | | 292-296.3 rock is darker pink (increase in potassic alteration) less sericitic minor magnetite. | | | | | | | | | | |
| 296.3 | 330.3 | Aplite - fine grained granodiorite. Pink fine to increasingly coarser grained rock with 1-2% biotite-chlorite-epidote. The coarsening of the grain size is gradational. This rock does not look like the typical fine grained mafic poor aplite where it becomes coarser grained. There are occasional white recrystallized quartz veins and | | | | | | | | | | |

RIO TINTO CANADIAN EXPLORATION LIMITED
DIAMOND DRILL RECORD

HOLE No:
65
PAGE No:
10

| FOOTAGE | | DESCRIPTION | SAMPLE No | FOOTAGE | | LENGTH | | | | | | |
|---------|----|--|-----------|---------|----|--------|--|--|--|--|--|--|
| from | to | | | from | to | | | | | | | |
| | | minor pegmatite. Just below the upper contact is an 8" inclusion of the overlying granodiorite indicating the intrusive nature of this aplitic or fine grained mafic poor granodiorite. Upper contact moderately sharp at 80°. Lower contact 90°. | | | | | | | | | | |
| | | 296.5 1" white recrystallized quartz vein 55° to C.A. Several small mo crystals in aplite close to quartz contact 0.008% mo over 4". 2% pyrite | | | | | | | | | | |
| | | 296.7-297.3 inclusion of overlying granodiorite with 5% biotite chlorite and epidote; minor fine magnetite | | | | | | | | | | |
| | | 298-298.3 recrystallized white quartz vein 20° to core. Minor biotite along contact. 3% pyrite often rimmed by epidote. One pyrite epidote bleb crosses the quartz - aplite boundary. One mo crystal in the quartz and numerous fine mo crystals in the aplite at the lower contact. The mo appears to be associated with thin fractures. Also one mo crystal with in a fractured pyrite bleb 0.06% mo over 5" minor pegmatite at upper contact. | | | | | | | | | | |
| | | 303.7 very fine fracture at 45° coated with fine black prismatic mineral tourmaline. | | | | | | | | | | |

RIO TINTO CANADIAN EXPLORATION LIMITED
DIAMOND DRILL RECORD

MOLE NO:

65

PAGE NO:

11

| FOOTAGE | | DESCRIPTION | SAMPLE NO | FOOTAGE | | LENGTH |
|---------|----|--|-----------|---------|----|--------|
| from | to | | | from | to | |
| | | 304.3 1/32" biotite-muscovite chlorite epidote fracture with minor euhedral pyrite and one mo crystal. | | | | |
| | | 305.3-306.7 granodiorite medium grained pink rock 5% biotite minor chlorite and epidote. Few small magnetite crystals. Contacts sharp at 90° this is an inclusion. | | | | |
| | | 307.5 1/2" quartz vein 60° to core. Several large blebs of pyrite surrounded in chlorite. One mo crystal near contact in the aplite | | | | |
| | | Below 308 there is a slight increase in mafics and grain size rock looks more like a mafic poor fine grained granodiorite. | | | | |
| | | 311.2 1/2" quartz vein with minor pegmatite at contacts 85° to C.A. | | | | |
| | | 316.3 1" recrystallized quartz vein 65° to core but irregular several chlorite filled fractures. Several small mo crystals in country rock at quartz vein contact. | | | | |
| | | 317 2" white quartz vein. No mo. | | | | |
| | | 327.4 1/2" quartz vein 30° to core axis. Chlorite and biotite with a few euhedral pyrite crystals along one contact. | | | | |
| | | 327.5 0.06% mo over 5" in the aplite | | | | |

RIO TINTO CANADIAN EXPLORATION LIMITED
DIAMOND DRILL RECORD

| |
|----------------|
| HOLE NO. 65 |
| PAGE NO. 12 |

| FOOTAGE | | DESCRIPTION | SAMPLE NO | FOOTAGE | | LENGTH | | | | |
|---------|-------|--|-----------|---------|----|--------|--|--|--|--|
| from | to | | | from | to | | | | | |
| 330.3 | 359.6 | Granodiorite medium grained pink homogeneous biotite granodiorite similar to 233.3-296.2. Upper contact moderately sharp approximately 90° to core | | | | | | | | |
| | | 5% pyrite over 1% at upper contact Occasional darker pink (altered section). Several pink aplite intrusions and minor quartz minor pyrite and magnetite. | | | | | | | | |
| | | 332.1 1" aplitic dyke contacts sharp at 70° hematite stain at lower contact | | | | | | | | |
| | | 336.7-338.9 aplite to fine grained mafic poor granodiorite low contact 70° to core | | | | | | | | |
| | | 337.5 minor irregular quartz with large bleb of pyrite. | | | | | | | | |
| | | 338.2-338.6 inclusion of medium grained biotite granodiorite. | | | | | | | | |
| | | Contacts 75° to C.A. | | | | | | | | |
| | | 339.4 ½" quartz vein with 3% pyrite and minor epidote | | | | | | | | |
| | | 339.5 2" aplite 70° to C.A. 1% pyrite | | | | | | | | |
| | | 340.5-341.6 ½" irregular white quartz vein along side of core with one large pyrite crystal. | | | | | | | | |
| | | 341.6-342.7 massive white quartz vein Contacts sharp at 70° | | | | | | | | |
| | | 342.7-345.3 Aplite pink fine grained mafic poor rock lower contact is silicified and sericitic. Minor pyrite numerous small no crystals | | | | | | | | |

RIO TINTO CANADIAN EXPLORATION LIMITED
DIAMOND DRILL RECORD

MILE NO:
65
PAGE NO:
13

| FOOTAGE | | DESCRIPTION | SAMPLE NO | FOOTAGE | | LENGTH | | | |
|---------|-------|--|-----------|---------|----|--------|--|--|--|
| from | to | | | from | to | | | | |
| | | over 7" at upper contact. Average 0.1% mo over 7". Muscovite sericite on some fractures. | | | | | | | |
| | | 349.4 3" silicified and sericitic zone with 1/2" white quartz vein 2% pyrite. | | | | | | | |
| 359.6 | 367.2 | 351.8 3" silicified & sericitic zone with 1/2" white quartz vein, 2% pyrite. Aplite pink fine grained mafic poor rock. Upper contact sharp. At 80° to C.A. Lower contact 70° to C.A. Minor pegmatite at upper contact. Muscovite and sericite along some fractures. This rock increases in grain size and has 1% to occasionally 2% mafics biotite and chlorite 367 large bleb of pyrite. | | | | | | | |
| 367.2 | 376 | Granodiorite and aplite. Medium grained medium grained pink biotite granodiorite and fine grained pink aplite with minor quartz. The biotite in the granodiorite is weakly chloritic and rimmed by epidote. 367.2-370.5 pink biotite granodiorite upper contact sharp at 80° to C.A. 367.9-369.4 darker pink with decrease in mafics. 1/2" biotite epidote fracture at 40° to C.A. 370.5-371.1 recrystallized white quartz vein; chlorite and minor pyrite at contacts but contacts broken.. 371.1-372.1 aplite pink fine grained rock. Contacts broken. | | | | | | | |

RIO TINTO CANADIAN EXPLORATION LIMITED
DIAMOND DRILL RECORD

| |
|----------------|
| MOLE NO: 65 |
| PAGE NO: 14 |

| FOOTAGE | | DESCRIPTION | SAMPLE NO | FOOTAGE | | LENGTH |
|---------|----|--------------------------------------|-----------|---------|----|--------|
| from | to | | | from | to | |
| | | Several mo crystals - 0.01% mo | | | | |
| | | 372.1-373.9 granodiorite. Upper con- | | | | |
| | | tact broken lower contact 60° to | | | | |
| | | C.A. The granodiorite is slightly | | | | |
| | | darker pink and mafic poor but is | | | | |
| | | medium grained. No mo. Minor | | | | |
| | | magnetite | | | | |
| | | 373.9-374.4 Aplite lower contact 60° | | | | |
| | | to C.A. Minor fine magnetite. No | | | | |
| | | mo. | | | | |
| | | 374.4-375.4 granodiorite pink medium | | | | |
| | | grained biotite granodiorite lower | | | | |
| | | contact at a 1" quartz calcareous | | | | |
| | | vein that is vuggy and has several | | | | |
| | | fine mo crystals. 0.06% mo over | | | | |
| | | 1" | | | | |
| | | 375.4-376 Aplite pink fine grained | | | | |
| | | mafic poor rock. Minor magnetite. | | | | |
| 376 ✓ | | E.O.H. | | | | |
| | | CASING PULLED | | | | |
| | | BRADLEY BROS. DIAMOND DRILLING | | | | |

PATRICIA
 MINING CO.
 RECEIVED
 JUL - 1980
 AM 7:00 PM 2:34.58

RIO TINTO CANADIAN EXPLORATION LIMITED
DIAMOND DRILL RECORD

LOCATION: L156E 90+00N
AZIMUTH: 360°

MOLE NO
DDH 66

PROPERTY: Pidgeon Molybdenum

DIP: -45° at collar LENGTH: 373' ELEVATION: 9993.84 CLAIM NO: Pa532061

STARTED: March 8, 1980 CORE SIZE: NQ DATE LOGGED: March 12, 1980 SECTION: L156E

COMPLETED: March 10, 1980 DIP TESTS: 43° @ 150'
42° @ 305' LOGGED BY: K. Blewett

PURPOSE: To test granite/volcanic contact at 100' vertical elevation *K. Blewett*

| FOOTAGE | | DESCRIPTION | SAMPLE NO | FOOTAGE | | LENGTH | | | | | | |
|---------|------|--|-----------|---------|----|--------|--|--|--|--|--|--|
| from | to | | | from | to | | | | | | | |
| 0 | 60.0 | Casing | | | | | | | | | | |
| 60.0 | 62.4 | Andesite fine grained green chlorite schist to hornblende chlorite gneiss. Foliated 65°-70° to C.A. but becomes very swirly at lower contact. There is abundant epidote in this andesite with minor quartz aplitic intrusions. 5% pyrite along foliation planes and in fractures. Lower contact 75° to C.A. | | | | | | | | | | |
| 62.4 | 71.1 | Granodiorite and aplite. Medium grained pink granodiorite with 5% biotite and epidote. The feldspar occurs as small phenocrysts to 1/8" diameter. Minor magnetite. The granodiorite is finer grained towards upper contact. This section is moderately well fractured with numerous chlorite filled fractures from 67-68.5. No mo. | | | | | | | | | | |
| | | 65.7-66.7 Aplite pink very fine grained mafic poor rock. Upper contact sharp and irregular lower contact sharp at 85° to C.A. There are a | | | | | | | | | | |

RIO TINTO CANADIAN EXPLORATION LIMITED
DIAMOND DRILL RECORD

HOLE No:
66
PAGE No:
2

| FOOTAGE | | DESCRIPTION | SAMPLE No | FOOTAGE | | LENGTH | | | | | | |
|---------|-------|--|-----------|---------|----|--------|--|--|--|--|--|--|
| from | to | | | from | to | | | | | | | |
| | | a couple of inclusions of granodiorite within the aplite. No Mo fractured at 15° to C.A. | | | | | | | | | | |
| | | 69-70.9 Aplite similar to 65.7-66.7 also fractured. Very dark pink. Upper contact 40° to C.A. Lower contact 65° to C.A. | | | | | | | | | | |
| | | 70.9-71.1 bleached granodiorite upper contact finer grained. Lower contact broken. | | | | | | | | | | |
| 71.1 | 72.6 | Andesite dark green epidote rich homogeneous rock not schistose. 5% pyrite minor quartz. The rock is fractured especially at lower contact. Lower contact 65° to C.A. with a ¼" white quartz feldspar vein cross cutting contact. | | | | | | | | | | |
| 72.6 | 192.1 | Granodiorite pink medium grained weak to moderately sericitic granodiorite with ≤ 5% mafics. This has minor pyrite and magnetite. There are several pink aplite intrusions throughout granodiorite. Minor py. ≤ 0.5% fine magnetite. | | | | | | | | | | |
| | | 72.6-82.2 numerous chloritic fractures. | | | | | | | | | | |
| | | 75.6-76 andesite inclusion contacts broken | | | | | | | | | | |
| | | 76 - 77 shear silicified and fractured granodiorite | | | | | | | | | | |
| | | 77.5-78.1 aplite fine grained dark pink rock. Contacts sharp but irregular. There are inclusions | | | | | | | | | | |

RIO TINTO CANADIAN EXPLORATION LIMITED
DIAMOND DRILL RECORD

HOLE No:

66

PAGE No:

4

| FOOTAGE | | DESCRIPTION | SAMPLE No | FOOTAGE | | LENGTH | | | | | | |
|---------|----|---|-----------|---------|----|--------|--|--|--|--|--|--|
| from | to | | | from | to | | | | | | | |
| | | 101.4 fracture zone - moderately fractured rock with chlorite filling many fractures. | | | | | | | | | | |
| | | 102 - one mo crystal | | | | | | | | | | |
| | | 103.3-105.2 aplitic rock pink fine to coarser grained mafic poor well fractured rock. Minor quartz. 3% pyrite and 1" quartz at lower contact. | | | | | | | | | | |
| | | 107.3 one small Mo crystal in chlorite fracture. | | | | | | | | | | |
| | | 115.7-117.5 fractured dark green chloritic rock with quartz feldspar blebs possible well altered andesite but appears more likely to be a chlorite fracture zone. | | | | | | | | | | |
| | | Below 131 the rock is less sericitic. | | | | | | | | | | |
| | | 122 6" fracture zone chlorite filling fractures. Minor fluorite. | | | | | | | | | | |
| | | 125-130 1% pyrite mainly in fractures two 1" chloritic-epidote fractures with 1/8" lense of pyrite. | | | | | | | | | | |
| | | 131.5-136 the rock is darker pink in colour. | | | | | | | | | | |
| | | 134.3 one small mo crystal in granodiorite | | | | | | | | | | |
| | | 138.7 2" quartz vein contacts broken 5% pyrite .5-1% chalcopryite | | | | | | | | | | |
| | | 141-142 weak silicified shear zone 1% pyrite. | | | | | | | | | | |

RIO TINTO CANADIAN EXPLORATION LIMITED
DIAMOND DRILL RECORD

HOLE NO:
66
PAGE NO:
5

| FOOTAGE | | DESCRIPTION | SAMPLE NO | FOOTAGE | | LENGTH | | | | | | |
|---------|----|---|-----------|---------|----|--------|--|--|--|--|--|--|
| from | to | | | from | to | | | | | | | |
| | | 145.6-146.3 Aplite pink fine grained rock upper contact sharp 80° to C.A. Lower contact broken. This aplite has very little mafics minor pyrite and .5-1% very fine magnetite. No Mo. Also minor sericite along one fracture. | | | | | | | | | | |
| | | 147.2-150.5 Aplite pink fine grained rock but slightly coarser grained than aplite from 145.6-146.3. 1% pyrite mainly in fractures 0.5% fine magnetite. No mo. | | | | | | | | | | |
| | | 159.6 1/4" fracture filled with quartz > 5% pyrite .5% chalcopyrite. 1% magnetite and numerous Mo crystals over 1/4" 0.7% Mo | | | | | | | | | | |
| | | 162 several small vugs with hematite stain. | | | | | | | | | | |
| | | 163.6 1/8" magnetite lense at 80° to C.A. | | | | | | | | | | |
| | | 165-167.4 granodiorite is weakly sheared and has minor hematite stain on some fractures. | | | | | | | | | | |
| | | 167.4-169.6 Andesite weakly chloritic hornblende feldspar gneiss which is an inclusion of the site upper contact broken lower contact sharp at 70°. Small vugs and hematite stain in the granodiorite at lower contact. | | | | | | | | | | |

RIO TINTO CANADIAN EXPLORATION LIMITED
DIAMOND DRILL RECORD

HOLE No:
66

PAGE No:
6

| FOOTAGE | | DESCRIPTION | SAMPLE No | FOOTAGE | | LENGTH | | | | | | | |
|---------|-------|--|--------------|---------|----|--------|--|--|--|--|--|--|--|
| from | to | | | from | to | | | | | | | | |
| | | 169.6-177.5 increase in magnetite content and hematite stain. | | | | | | | | | | | |
| | | 173.7-175 white quartz vein chlorite filling some fractures. | | | | | | | | | | | |
| | | 176.7-177.3 5% magnetite and yellow iron stain several Mo crystals 0.01% Mo. | | | | | | | | | | | |
| | | 182.8-183.4 quartz vein fractured approximately 25° to C.A. | | | | | | | | | | | |
| | | 184-187.1 aplite contacts 80° to C.A. pink fine grained mafic poor fine grained mafic poor rock | | | | | | | | | | | |
| | | Upper contact is weakly bleached and has minor hematite stain. There are a couple of muscovite chlorite filled fractures at upper contact and several Mo crystals. 0.01% Mo mainly at upper contact. | | | | | | | | | | | |
| | | 190.5-191.2 aplite 65° to C.A. Several vugs. 2% pyrite 3% magnetite mainly as a large bleb at 191.1. | | | | | | | | | | | |
| 192.1 | 198.2 | Aplite with some quartz fine to slightly medium grained mafic poor pink rock. | | | | | | | | | | | |
| | | There is an irregular quartz vein with an inclusion of granodiorite from 192.1-193.8 - there are several Mo crystals mainly in the granodiorite 0.02% Mo from 192.1-193.8 | | | | | | | | | | | |

RIO TINTO CANADIAN EXPLORATION LIMITED
DIAMOND DRILL RECORD

| |
|----------------|
| HOLE No: 66 |
| PAGE No: 7 |

| FOOTAGE | | DESCRIPTION | SAMPLE No | FOOTAGE | | LENGTH | | | | |
|---------|-------|--|--------------|---------|----|--------|--|--|--|--|
| from | to | | | from | to | | | | | |
| | | 194.7-195.3 inclusion of granodiorite contacts 90° to C.A. | | | | | | | | |
| 198.2 | 236.3 | Granodiorite medium grained pink homogeneous weakly sericitic granodiorite similar to section from 72.6-192.1 but mafics are slightly finer grained. Minor disseminated pyrite and magnetite. | | | | | | | | |
| | | 205-206.9 weak pegmatite zone there are coarser grained feldspar crystals decrease in mafics and 1% magnetite with minor hematite stain. Several Mo crystals 0.01% Mo contacts are gradational. | | | | | | | | |
| | | 211.1-215 Aplite - fine grained mafic poor granodiorite. Dark pink rock but coarser grained than typical aplite contacts moderately sharp at 80° < 1% mafics minor sericite some small vugs and minor iron stain. No Mo. | | | | | | | | |
| | | 220-221 Andesite inclusion contacts broken but approximately 60° to C.A. epidote rich feldspar-hornblende biotite gneiss | | | | | | | | |
| | | 225.5 1" quartz vein 25° to C.A. pink stain along contacts. | | | | | | | | |
| | | 226-227 2% pyrite | | | | | | | | |
| | | 227.2-228.1 chloritic epidote fracture zone with minor sericite. | | | | | | | | |

RIO TINTO CANADIAN EXPLORATION LIMITED
DIAMOND DRILL RECORD

| |
|----------------|
| HOLE NO: 66 |
| PAGE NO: 9 |

| FOOTAGE | | DESCRIPTION | SAMPLE NO | FOOTAGE | | LENGTH | | | |
|---------|-----|---|-----------|---------|----|--------|--|--|--|
| from | to | | | from | to | | | | |
| | | 257.5-260 fracture zone numerous chlorite filled fractures 30° to C.A. | | | | | | | |
| 271.1 | 373 | Granodiorite greyish pink fine to medium grained granodiorite. This rock is finer grained than the overlying granodiorite and there is an increase in mafic content (biotite epidote minor chlorite). There is minor pyrite and magnetite in this rock. 2% white feldspar phenocrysts to ¼" diameter. Minor epidote chlorite sulphide filled fractures. | | | | | | | |
| | | 275.5 1" white quartz vein 30° to core axis. Pink alteration at contacts. | | | | | | | |
| | | 276.7-277.9 stronger pink alteration with minor white quartz and numerous chlorite epidote fractures. Several vugs. The granodiorite has a decrease in mafics. 1% magnetite several small mo crystals 0.009% over 8". | | | | | | | |
| | | 282.5 ¼" quartz pegmatite 45° to core axis. | | | | | | | |
| | | 284.5-288.5 grey granodiorite upper 1.5' is fine grained contacts gradational. | | | | | | | |
| | | 295.6-297.3 medium grained pink granodiorite 5% mafics. Biotite occurs as large clots contacts sharp at 40°. Feldspar crystals are coarser grained. | | | | | | | |

RIO TINTO CANADIAN EXPLORATION LIMITED
DIAMOND DRILL RECORD

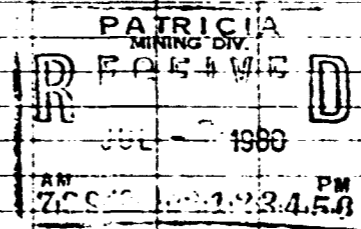
MOLE NO:

66

PAGE NO:

11

| FOOTAGE | | DESCRIPTION | SAMPLE NO | FOOTAGE | | LENGTH | | | |
|---------|-----|--|--------------|---------|----|--------|--|--|--|
| from | to | | | from | to | | | | |
| | | 346.5-349.9 several fractures and an increase in pink alteration. Mainly adjacent to fractures. | | | | | | | |
| | | 349.9-352 very weak shear 2% pyrite | | | | | | | |
| | | 356.9-357.1 pink aplitic - or medium grained mafic poor granodiorite intrusion. 45° to C.A. coarser grain towards contacts. | | | | | | | |
| | | 360.3 2" pink aplite contacts sharp at 55° to C.A. just above the upper contact there are several chlorite epidote fractures one with several large pyrite crystals. | | | | | | | |
| | | 367 1" pegmatite 30° to C.A. medium grained - hematite stain in some fractures. | | | | | | | |
| | | 371 1.5" medium grained dark pink granodiorite to pegmatite. Contacts sharp at 50° to C.A. | | | | | | | |
| | | 372.2 4" aplitic granodioritic dyke Contacts sharp 55° to C.A. | | | | | | | |
| | 373 | E.O.H. | | | | | | | |
| | | CASING PULLED BRADLEY BROS. DIAMOND DRILLING. | | | | | | | |



RIO TINTO CANADIAN EXPLORATION LIMITED
DIAMOND DRILL RECORD

LOCATION: L140E 87+00N
 AZIMUTH: 360°
 DIP: -50° at collar
 STARTED March 12, 1980
 COMPLETED March 14, 1980

HOLE NO
67
 PROPERTY: PIDGEON MOLYBDENUM
 CLAIM NO: Pa 512203
 SECTION: L140E
 LOGGED BY: K. Blewett

PURPOSE: To test volcanic/granite contact on north side of Moly Lake in the vicinity of Decoursey Brewis's 1958 diamond drilling.

K. Blewett

| FOOTAGE | | DESCRIPTION | SAMPLE NO | FOOTAGE | | LENGTH | | | | | | |
|---------|-------|---|-----------|---------|----|--------|--|--|--|--|--|--|
| from | to | | | from | to | | | | | | | |
| 0 | 89 | Casing | | | | | | | | | | |
| 89 | 98.4 | Metagabbro medium grained dark green weakly schistose 60° to C.A. The rock consists of chloritized amphibole phenocrysts in a feldspar matrix. Minor calcareous material in some fractures. Several aplitic intrusions ≤ 2" wide. ≤ 1% pyrite | | | | | | | | | | |
| 98.4 | 104.6 | Aplite pink fine grained mafic poor rock with occasional coarser grained more mafic rich section. Upper contact sharp 55° to C.A. lower contact broken. Numerous inclusions of metagabbro well altered approximately 60° to C.A. .5% pyrite .5% magnetite large bleb of chalcopyrite at lower contact. No Mo. | | | | | | | | | | |
| 104.6 | 140 | Metagabbro similar to 89-98.4 several quartz veins moderately fractured and there is an increase in pyrite to 1-2% with localized sections up to 4%. There is an increase in epidote towards the lower contact. | | | | | | | | | | |

RIO TINTO CANADIAN EXPLORATION LIMITED
DIAMOND DRILL RECORD

HOLE No:
67

PAGE No:
2

| FOOTAGE | | DESCRIPTION | SAMPLE No | FOOTAGE | | LENGTH | | | | | | | |
|---------|-------|--|-----------|---------|----|--------|--|--|--|--|--|--|--|
| from | to | | | from | to | | | | | | | | |
| | | Lower contact is broken. | | | | | | | | | | | |
| 140 | 184.6 | Granodiorite medium grained homogeneous pink weakly sericitic rock. 5% large wispy biotite generally altering to epidote. Several chlorite-epidote filled fractures. Minor pyrite and magnetite. Darker pink (iron stain towards upper contact. Occasional darker pink potassic alteration zone. The rock is weakly schistose at 60° to C.A. 162.5-166.6 increase in potassic alteration occasional chlorite-epidote filled fractures. Minor iron stain. | | | | | | | | | | | |
| | | Below 179 the rock becomes weakly bleached. | | | | | | | | | | | |
| | | 183 4" finer grained shear zone 3% pyrite. | | | | | | | | | | | |
| 184.6 | 215 | Granodiorite finer grained greyish pink weakly sericitic rock. Weakly schistose 65° to C.A. Upper contact 80° to C.A. Lower contact arbitrary. There is minor quartz pegmatite intrusions. There is 1% disseminated pyrite surrounded by epidote but not consistent throughout core ≤ 1% magnetite. 186.4-188 quartz-pegmatite several large pyrite crystals at upper contact. No Mo. | | | | | | | | | | | |

RIO TINTO CANADIAN EXPLORATION LIMITED

DIAMOND DRILL RECORD

HOLE NO:

67

PAGE NO:

3

| FOOTAGE | | DESCRIPTION | SAMPLE NO | FOOTAGE | | LENGTH | | | | | | | | |
|---------|-------|--|-----------|---------|----|--------|--|--|--|--|--|--|--|--|
| from | to | | | from | to | | | | | | | | | |
| | | 198.6 2" white quartz vein 40° to to C.A. | | | | | | | | | | | | |
| | | 209.6-209.9 quartz vein one Mo crystal. | | | | | | | | | | | | |
| 215.0 | 249.0 | Granodiorite pinker than overlying granodiorite there is 5% biotite some of which occurs as larger wisps. Increase in hematite stain. Several quartz minor pegmatite veins. Calcareous material on some fractures. Minor pyrite and magnetite. | | | | | | | | | | | | |
| | | 219.2 fluorite in a chlorite-epidote fracture. | | | | | | | | | | | | |
| | | 225-226.6 bleached numerous small vugs with hematite stain 2% pyrite some weathered out. Large chlorite-biotite filled fracture. | | | | | | | | | | | | |
| | | 227.2-228 dark pink fine-medium grained mafic poor rock aplite to granodiorite contacts approximately 40° to C.A. | | | | | | | | | | | | |
| | | 232.5-247 ≥ 5% muscovite weakly bleached granodiorite and several quartz veins hematite stain. | | | | | | | | | | | | |
| | | 234 2" quartz vein 70° to C.A. large bleb of dark red hematite small vugs at contacts. | | | | | | | | | | | | |
| | | 235.6 2" irregular quartz vein with a ¼" off shooting quartz vein | | | | | | | | | | | | |

RIO TINTO CANADIAN EXPLORATION LIMITED
DIAMOND DRILL RECORD

HOLE NO:
67
PAGE NO:
4

| FOOTAGE | | DESCRIPTION | SAMPLE NO | FOOTAGE | | LENGTH |
|---------|----|--|-----------|---------|----|--------|
| from | to | | | from | to | |
| | | approximately parallel to core axis. | | | | |
| | | 238.2 two blebs of specular hematite | | | | |
| | | 241.3 1.5" irregular quartz pegmatite with muscovite at contacts. | | | | |
| | | 243.6-247 pink pegmatite 15° to C.A. no Mo. | | | | |
| | | 244.7-246.3 white quartz vein contacts broken there is an inclusion of granodiorite. The granodiorite in the inclusion and at the vein contacts is bleached. | | | | |
| | | 249 two specks of fluorite along a fracture. | | | | |
| 249 | ✓ | E.O.H. | | | | |
| | | CASING PULLED BRADLEY BROS. DIAMOND DRILLING | | | | |

PATRICIA
 MINING DIV.
 RECEIVED
 JUL - 1980
 AM 7:00 PM 5:00

RIO TINTO CANADIAN EXPLORATION LIMITED
DIAMOND DRILL RECORD

| |
|-----------------|
| HOLE NO: 67A |
| PAGE NO: 2 |

| FOOTAGE | | DESCRIPTION | SAMPLE NO | FOOTAGE | | LENGTH | | | | | | |
|---------|-------|--|-----------|---------|----|--------|--|--|--|--|--|--|
| from | to | | | from | to | | | | | | | |
| 101.2 | 109.2 | Aplite pink fine grained mafic poor rock. Occasional fractures. Inclusions of metagabbro at 101.3-101.6; 104 (2.5" and 104.5-105.3 contacts of these gabbro intrusions are approximately 65-70° to C.A. There is calcareous material along fractures. Lower contact 65° at a ½" sericite zone. Minor magnetite mainly at lower contact. | | | | | | | | | | |
| 109.2 | 138.3 | Metagabbro similar to 82-97.8 but a slight increase in fractures some filled with quartz-feldspar and potassic alteration. There is an increase in epidote from 135-138.3. Lower contact at 70° to C.A. Minor calcareous material in foliation plane with 1-2% pyrite very minor magnetite along foliation plane occasionally up to 3-4% localized pyrite. | | | | | | | | | | |
| 138.3 | 181.0 | Granodiorite medium grained homogeneous pink sericitic granodiorite 2-3% epidote mainly surrounding the biotite. 5% biotite (large clots). Few fractures minor magnetite, minor aplite and quartz veins. No mo. 138.3-144 the mafics are more altered and the rock is weakly sheared 1-2% pyrite 147.4-147.6 pink aplite contacts sharp at 70° to 1% pyrite minor magnetite no mo. | | | | | | | | | | |

RIO TINTO CANADIAN EXPLORATION LIMITED

DIAMOND DRILL RECORD

MOLE NO.

67A

PAGE NO.

3

| FOOTAGE | | DESCRIPTION | SAMPLE NO | FOOTAGE | | LENGTH |
|---------|-------|---|-----------|---------|----|--------|
| from | to | | | from | to | |
| | | 150-151 weak fracture zone several quartz epidote chlorite filled fractures increase in potassic alteration. | | | | |
| | | 154.5 1" quartz vein 60° to core | | | | |
| | | 155.5 2" white quartz vein 45° to C.A. some potassic alteration a couple of large blebs of chalcopyrite; also a steel grey soft fine grained crystal appears to be cubic in places possible galena or specular hematite | | | | |
| | | 177.4 ¼ fracture with strong potassic alteration 3% pyrite | | | | |
| 181.0 | 214.5 | Granodiorite greyish pink finer grained homogeneous granodiorite with a slight increase in mafics (biotite-epidote) but this could be due to the fine grained nature of the mafics. Occasional quartz and pegmatite but not abundant. Weak foliation 65° to core. Minor pyrite; 1% magnetite lower contact is broken has numerous vugs minor hematite and chlorite muscovite fractures. | | | | |
| | | 189.4 2" white quartz vein 15° to C.A. | | | | |
| | | 191-197 1-2% pyrite Two small quartz veins ≤ ½" one large pyrite crystal and one pyrite crystal crossing quartz | | | | |

RIO TINTO CANADIAN EXPLORATION LIMITED
DIAMOND DRILL RECORD

HOLE NO:

67A

PAGE NO:

4

| FOOTAGE | | DESCRIPTION | SAMPLE NO | FOOTAGE | | LENGTH |
|---------|-------------|--|-----------|---------|----|--------|
| from | to | | | from | to | |
| | | granodiorite contact. | | | | |
| | 199-202 | 2% pyrite | | | | |
| | 203 | 1/2" quartz vein 50° to C.A. | | | | |
| | | magnetite surrounding a pyrite crystal close by. | | | | |
| | 210.5-214.5 | increase in pink alteration. Lower contact has numerous hematite filled vugs. | | | | |
| | 213.6 | 1/16" sericitic fracture with several blebs of Mo. | | | | |
| 214.5 | 260.6 | Granodiorite pink medium grained homogeneous granodiorite similar to 138.3-181. Minor pyrite and magnetite upper contact at a fractured pink pegmatite. | | | | |
| | 214.5-257 | several quartz pegmatite zones | | | | |
| | 214.5-215.3 | pegmatite pink coarse grained fractured rock contacts broken several vugs. 4% pyrite crystals in vugs and fractures; chlorite also filling some fractures. | | | | |
| | 215.3-223 | darker pink granodiorite with occasional vugs 2% muscovite epidote filling some fractures 2% pyrite. | | | | |
| | 221.5 | 3" silicified zone numerous small mo crystals 0.4% mo | | | | |
| | 221.7-222.3 | irregular pegmatite pink fractured rock well fractured large vug. | | | | |

RIO TINTO CANADIAN EXPLORATION LIMITED
DIAMOND DRILL RECORD

| |
|-----------------|
| MOLE NO: 67A |
| PAGE NO 5 |

| FOOTAGE | | DESCRIPTION | SAMPLE NO | FOOTAGE | | LENGTH |
|---------|----|--|--------------|---------|----|--------|
| from | to | | | from | to | |
| | | 228-230.4 darker pink granodiorite some hematite stain. 0.01% mo mainly towards contact with quartz vein at 230.4 | | | | |
| | | 230.4-231.8 white quartz veins upper contact 10° to C.A. lower contact 65° several vugs modera- tely fractured. 0.01% mo. | | | | |
| | | 231-231.6 irregular inclusion of granodiorite | | | | |
| | | 231.8-234.8 granodiorite with several mo crystals mainly to- wards lower contact. 0.07% mo. | | | | |
| | | 234.8-235.1 quartz vein with grano- diorite inclusion. Potassic alteration numerous mo crystals 0.3% mo. | | | | |
| | | 235.1-235.4 altered granodiorite 0.08% mo | | | | |
| | | 235.4 1" quartz vein | | | | |
| | | 236-258.7 local bleached zones mainly associated with fractures and pegmatite vugs and hematite stain common | | | | |
| | | 236.5 ½" quartz vein 40° to C.A. Vuggy. One mo crystal in grano- diorite near quartz contact. | | | | |
| | | 242.5-243.3 white quartz vein 35° to C.A. | | | | |

RIO TINTO CANADIAN EXPLORATION LIMITED
DIAMOND DRILL RECORD

HOLE NO:

67A

PAGE NO:

6

| FOOTAGE | | DESCRIPTION | SAMPLE NO | FOOTAGE | | LENGTH | | | | | |
|---------|------|---|-----------|---------|----|--------|--|--|--|--|--|
| from | to | | | from | to | | | | | | |
| | | 243.7-244.5 irregular quartz vein along one side of core with pegmatite. | | | | | | | | | |
| | | 246-246.3 coarse pegmatite with quartz crystals in vugs. | | | | | | | | | |
| | | 248 1.5" aplite 60° to C.A. | | | | | | | | | |
| | | 249.2-252 quartz pegmatite with granodiorite. Contacts irregular. No mo. | | | | | | | | | |
| | | 252-254.6 bleached, finer grained granodiorite with stronger hematite stain. One fracture filled with coarse pyrite. | | | | | | | | | |
| | | 254.6-256.7 silicified fracture zone with several biotite chlorite-epidote zones to 5" wide. | | | | | | | | | |
| | | 156.2-156.7 white quartz vein with minor pegmatite, chlorite fractures and pink alteration. | | | | | | | | | |
| | | 256.7-258 bleached granodiorite with vugs and hematite stain. | | | | | | | | | |
| 260.6 | 2623 | Aplite pink fine grained mafic poor rock Contacts sharp upper contact 85°; lower contact 60°. 2% pyrite in fractures at lower contact. Several cross cutting quartz veinlets. Minor magnetite and pyrite. Minor mo. 0.007% Mo | | | | | | | | | |

RIO TINTO CANADIAN EXPLORATION LIMITED
DIAMOND DRILL RECORD

MOLE NO:
67A

PAGE NO:
7

| FOOTAGE | | DESCRIPTION | SAMPLE NO | FOOTAGE | | LENGTH | | | | | | | | |
|---------|-----|---|-----------|---------|----|--------|--|--|--|--|--|--|--|--|
| from | to | | | from | to | | | | | | | | | |
| 262.3 | 381 | Granodiorite medium-grained weak-- moderately sericitic -- granodiorite. ≤ 5% biotite-chlorite-epidote 15% clouded feldspar phenocrysts < 1/4" intruded by quartz veins minor hema- tite stain around some feldspar. Sericite minor muscovite on some fractures 1% pyrite minor magnetite. | | | | | | | | | | | | |
| | | 285.7-286.4 quartz vein 15° to C.A. well fractured with fine grained black prismatic crystals filling fractures mainly along contacts possible amphibole or tourmaline. | | | | | | | | | | | | |
| | | 286.9-288.6 chlorite fracture zone. Massive dark green chlorite-biotite- epidote with minor black prismatic mineral hematite stain. | | | | | | | | | | | | |
| | | 288.6-290.1 white quartz vein | | | | | | | | | | | | |
| | | 297.4-297.9 irregular dark pink potassic alteration zone. | | | | | | | | | | | | |
| | | 296.5 1" white quartz vein 45° to C.A. | | | | | | | | | | | | |
| | | Below 297 the granodiorite is not as pink, pink alteration around the feldspar and the rock is weakly sericitic and has epidote. | | | | | | | | | | | | |
| | | 306 2" white quartz vein with pink alteration at contacts. 30° to C.A. One mo crystal at contact | | | | | | | | | | | | |

RIO TINTO CANADIAN EXPLORATION LIMITED

DIAMOND DRILL RECORD

HOLE No:

67A

PAGE No:

8

| FOOTAGE | | DESCRIPTION | SAMPLE No | FOOTAGE | | LENGTH | | | | | | | | |
|---------|----|--|--------------|---------|----|--------|--|--|--|--|--|--|--|--|
| from | to | | | from | to | | | | | | | | | |
| | | with granodiorite. | | | | | | | | | | | | |
| | | 316.2 1" white quartz vein 65° to core has an inclusion of granodio- rite. 3 small mo crystals in the quartz. | | | | | | | | | | | | |
| | | 319.5 1" quartz vein 70° to C.A. | | | | | | | | | | | | |
| | | 322.5-323.1 irregular pink aplite fractured coarse pink feldspar at the contacts. | | | | | | | | | | | | |
| | | 329.5-340.5 increase in pink altera- tion. There is an minor increase in epidote. Several chlorite epi- dote filled fractures from 335-340.5 the rock becomes moderately bleached. | | | | | | | | | | | | |
| | | 340.5-350 fine grained greyish grand- diorite possible shear zone. 2% pyrite. | | | | | | | | | | | | |
| | | 343.5-344.6 alteration zone dark pink mafic poor granodiorite with minor aplite several chlorite fractures. Contacts moderately sharp at 35° to core | | | | | | | | | | | | |
| | | 365 - 366 two white quartz veins ½" and 2" wide 65° to C.A. | | | | | | | | | | | | |
| | | 370.8 2" white quartz vein 75° to C.A. | | | | | | | | | | | | |
| | | 374.1 1" white quartz vein 70° to C.A. No pink alteration but quartz | | | | | | | | | | | | |

RIO TINTO CANADIAN EXPLORATION LIMITED
DIAMOND DRILL RECORD

LOCATION: L108E 85+50N
AZIMUTH: 360°

HOLE No
68

PROPERTY: PIDGEON MOLYBDENUM

DIP: -50° at collar LENGTH: 387' ELEVATION: 9983.47 CLAIM No: pa 512195

STARTED: March 19, 1980 CORE SIZE: "NQ" DATE LOGGED: March 20, 1980 SECTION: L108+00E

COMPLETED: March 21, 1980 DIP TESTS: -46.5° @ 150'
-45° @ 300' LOGGED BY: K. Blewett

PURPOSE: Test volcanic/granite contact west of Moly Lake *K. Blewett*

| FOOTAGE | | DESCRIPTION | SAMPLE No | FOOTAGE | | LENGTH | | | | | | |
|---------|-----------|--|-----------|---------|----|--------|--|--|--|--|--|--|
| from | to | | | from | to | | | | | | | |
| 0 | 108 | Casing | | | | | | | | | | |
| 108 | 131.5 | Andesite tuff fine grained green chlorite schist. The rock is foliated 75° to C.A. 3-4% biotite in foliation plane with several biotite bands to 1/4" wide. There are several white quartz veins with up to 5-8% pyrite and pyrrhotite. Minor pyrrhotite in foliation plane makes rock weakly magnetic lower contact broken. | | | | | | | | | | |
| | 114.5 | 3" quartz chlorite biotite epidote fracture filling. 2-3% pyrrhotite minor pyrite trace chalcopryrite. | | | | | | | | | | |
| | 115.8 | 1.5" quartz-epidote fracture filling ≥ 5% pyrite pyrrhotite | | | | | | | | | | |
| | 117.1 | 1" quartz vein. 5% pyrrhotite 0.5% chalcopryrite. | | | | | | | | | | |
| | 122.3-124 | Feldspar porphyry light grey fine grained dacitic rock with 3% fine biotite 3-5% fine clouded feldspar phenocrysts minor pyrite upper contact sharp at 75° lower | | | | | | | | | | |

RIO TINTO CANADIAN EXPLORATION LIMITED
DIAMOND DRILL RECORD

| |
|----------------|
| MOLE NO: 68 |
| PAGE NO: 2 |

| FOOTAGE | | DESCRIPTION | SAMPLE No | FOOTAGE | | LENGTH | | | | | | | | | | | | | |
|---------|-------|--|--------------|---------|----|--------|--|--|--|--|--|--|--|--|--|--|--|--|--|
| from | to | | | from | to | | | | | | | | | | | | | | |
| | | contact sharp at 80° appears intrusive 130.2 1.5" irregular white quartz bleb with minor pink alteration. | | | | | | | | | | | | | | | | | |
| 131.5 | 136.3 | Felsic dyke - dacite tuff fine grained light grey felsic rock similar to 122.3-124 but lacks phenocrysts. The contacts are broken. The upper contact is silicified with chlorite-biotite sericitic and hematite stain. There is an inclusion of chloritic schist from 134.2-135.1 contacts 80° to C.A. | | | | | | | | | | | | | | | | | |
| 136.3 | 143 | Metagabbro with granitic intrusions medium grained dark grained rock consisting of chloritized amphibole crystals and minor epidote. 1% pyrite generally localized; lower contact is broken. | | | | | | | | | | | | | | | | | |
| | | 139-139.8 fine grained whitish mafic poor aplitic rock with pink alteration along fractures. Minor pyrite Contacts no Mo. 85° to C.A. | | | | | | | | | | | | | | | | | |
| | | 140.3-140.6 white fine grained aplitic intrusions with inclusions of metagabbro at lower contact. Contacts 70° to C.A. No mo. | | | | | | | | | | | | | | | | | |
| 143 | 387 | Granodiorite medium grained pink weakly sericitic rock. 5-8% mafics consisting of biotite which has undergone considerable alteration to chlorite and epidote. There is less than 10% | | | | | | | | | | | | | | | | | |

RIO TINTO CANADIAN EXPLORATION LIMITED
DIAMOND DRILL RECORD

| |
|----------------|
| HOLE NO: 68 |
| PAGE NO: 3 |

| FOOTAGE | | DESCRIPTION | SAMPLE NO | FOOTAGE | | LENGTH | | | | | | | | | | | | | |
|---------|----|---|-----------|---------|----|--------|--|--|--|--|--|--|--|--|--|--|--|--|--|
| from | to | | | from | to | | | | | | | | | | | | | | |
| | | small feldspar phenocrysts $\leq \frac{1}{4}$ ". Several minor aplitic and quartz intrusions. Minor pyrite and magnetite with hematite stain towards the upper contact. $\approx 1\%$ pyrite $\approx 1\%$ magnetite | | | | | | | | | | | | | | | | | |
| | | 143-162 considerable hematite stain | | | | | | | | | | | | | | | | | |
| | | 145.5-146 irregular pink aplite with a 2" inclusion of granodiorite. There is one small Mo crystal in granodiorite at lower contact. Also there is a $\frac{1}{4}$ " quartz vein 25° to C.A. in granodiorite just below lower contact but that intrudes aplite at lower contact. There is one crystal of Mo in this quartz vein. | | | | | | | | | | | | | | | | | |
| | | 147.6 $\frac{1}{4}$ " pink aplite 90° to C.A. | | | | | | | | | | | | | | | | | |
| | | 149.5 1" pink aplite 90° to C.A. | | | | | | | | | | | | | | | | | |
| | | 149.7 $\frac{1}{4}$ " white quartz vein 80° to C.A. numerous small Mo crystals | | | | | | | | | | | | | | | | | |
| | | 0.09% Mo 1% pyrite at contacts and minor mo in granodiorite at lower contact. | | | | | | | | | | | | | | | | | |
| | | 152.5-153 white quartz vein with minor pegmatite upper contact sharp at 15° to C.A. lower contact 50° to C.A. granodiorite over 2" is sericitic and bleached at lower contact. | | | | | | | | | | | | | | | | | |
| | | 158.8-159.1 medium grained mafic poor granodiorite. | | | | | | | | | | | | | | | | | |
| | | 162-174.5 increase in sericite decrease in hematite. 1-2% pyrite | | | | | | | | | | | | | | | | | |

RIO TINTO CANADIAN EXPLORATION LIMITED
DIAMOND DRILL RECORD

| |
|----------------|
| HOLE NO: 68 |
| PAGE NO: 4 |

| FOOTAGE | | DESCRIPTION | SAMPLE NO | FOOTAGE | | LENGTH |
|---------|----|---|--------------|---------|----|--------|
| from | to | | | from | to | |
| | | 165.4-166 pink aplite 75° to C.A. the granodiorite at either contact is fine grained grey and sericitic. | | | | |
| | | 167.3 ½" quartz vein 55° to C.A. with pink alteration at contacts. One large vug and 1½ pyrite. | | | | |
| | | 174.5-194.7 Increase in potassic alteration. | | | | |
| | | 179.5 several chlorite-epidote filled fractures over one foot. | | | | |
| | | 180.4 1" fracture filled with chlorite and epidote and minor quartz. | | | | |
| | | 185 2" white quartz vein 70° to C.A. moderately fractured. | | | | |
| | | 185.4 1" white quartz vein 80° to C.A. | | | | |
| | | 186-187 three quartz veins ≤ 1" wide at 70° to C.A. No mo | | | | |
| | | 189.8-191.1 weak shear zone. The granodiorite is slightly bleached has minor hematite stained vugs and several epidote filled fractures. | | | | |
| | | 193.3-194 weakly silicified chlorite epidote rich shear or fracture zone. Minor pink alteration. | | | | |
| | | Below 194.7 the rock is not as pink and more sericitic. The biotite is still altered to chlorite and epidote. The rock is foliated 75°-80° to core. | | | | |

RIO TINTO CANADIAN EXPLORATION LIMITED
DIAMOND DRILL RECORD

HOLE No:

63

PAGE No:

5

| FOOTAGE | | DESCRIPTION | SAMPLE No | FOOTAGE | | LENGTH | | | | | |
|---------|----|---|-----------|---------|----|--------|--|--|--|--|--|
| from | to | | | from | to | | | | | | |
| | | 203.9 ½" zone of stronger potassic alteration around a ½" quartz vein. One small Mo crystal at edge of quartz. | | | | | | | | | |
| | | 207.3-209.3 quartz-pegmatite contacts approximately 20-30° 3" pegmatite at lower contact. There is an epidote fracture in the pegmatite and 1% magnetite at the lower contact. | | | | | | | | | |
| | | 217.2-218.9 numerous small vugs many with weak hematite stain (weathered out magnetite) and 3% fine magnetite | | | | | | | | | |
| | | Below 221 the biotite is less altered to chlorite and epidote. | | | | | | | | | |
| | | 230.1 ½" pegmatite vein 60° to C.A. | | | | | | | | | |
| | | 230.5 1" quartz-pegmatite 30° to C.A. | | | | | | | | | |
| | | 231.4-231.8 white quartz vein 40° to C.A. with pink alteration in some fractures. Numerous small magnetite crystals and hematite filled vugs above upper contact. There is also a couple of muscovite filled fractures above upper contact. | | | | | | | | | |
| | | 233.4-233.6 white quartz vein with epidote and minor hematite Contacts 60° to C.A. | | | | | | | | | |
| | | 235-237 weak fracture zone one epidote filled fracture and | | | | | | | | | |

RIO TINTO CANADIAN EXPLORATION LIMITED
DIAMOND DRILL RECORD

HOLE No:

68

PAGE No:

6

| FOOTAGE | | DESCRIPTION | SAMPLE No | FOOTAGE | | LENGTH | | | | | | | |
|---------|----|--|-----------|---------|----|--------|--|--|--|--|--|--|--|
| from | to | | | from | to | | | | | | | | |
| | | several fractures 35° to C.A. with potassic alteration for $\leq \frac{1}{4}$ ". | | | | | | | | | | | |
| | | 241-260 The granodiorite becomes less pink moderately sericitic and biotite occurs as larger wisps Occasional more altered zone. | | | | | | | | | | | |
| | | 243-243.9 Intermediate dyke - altered feldspar-quartz-biotite epidote dyke sharp contacts at 70° intruded by a $\frac{1}{2}$ " quartz vein. | | | | | | | | | | | |
| | | 244.8 2" quartz vein 60° to C.A. | | | | | | | | | | | |
| | | 244.9-245.5 similar to 243-243.9 contacts sharp at 65° to core axis | | | | | | | | | | | |
| | | 247.6 thin irregular quartz vein with large bleb of pyrite and magnetite | | | | | | | | | | | |
| | | 248.7 1.5" quartz vein 45° to C.A. minor pink alteration at contacts. | | | | | | | | | | | |
| | | 252.6-253.6 white quartz vein. Upper contact broken lower contact 55° to C.A. - fractured with several vugs and minor pink alteration. The granodiorite above the upper contact and over 4" has 4% magnetite and is dark pink. The lower contact has 2% magnetite and weak pink alteration. No mo. | | | | | | | | | | | |
| | | 260-273.4 increase in potassic alteration. | | | | | | | | | | | |
| | | 263-265.7 numerous epidote filled fractures with a 4" irregular vuggy quartz vein containing 2% pyrite towards the bottom. | | | | | | | | | | | |

RIO TINTO CANADIAN EXPLORATION LIMITED
DIAMOND DRILL RECORD

| |
|----------------|
| HOLE NO: 68 |
| PAGE NO: 7 |

| FOOTAGE | | DESCRIPTION | SAMPLE NO | FOOTAGE | | LENGTH | | | | | | | |
|---------|----|--|-----------|---------|----|--------|--|--|--|--|--|--|--|
| from | to | | | from | to | | | | | | | | |
| | | 269-270.2 dark pink granodiorite with numerous epidote filled fractures. | | | | | | | | | | | |
| | | 272.5-273.4 quartz-pegmatite 50° to C.A. minor magnetite | | | | | | | | | | | |
| | | 278.7-280.1 white quartz vein 05° to parallel to core axis large epidote filled vugs. | | | | | | | | | | | |
| | | 282.3 3% magnetite over 3" | | | | | | | | | | | |
| | | 282.6-284.5 darker pink potassic alteration zone. A couple of epidote filled fractures minor quartz 1-2% magnetite 2 small mo crystals 0.008% | | | | | | | | | | | |
| | | 288.1 ½" quartz vein 40° to C.A. with epidote and minor fluorite. | | | | | | | | | | | |
| | | 293-293.6 weak shear zone darker pink granodiorite with minor hematite several thin epidote filled fractures. | | | | | | | | | | | |
| | | 301.3-304 3 white quartz vein upper contact broken; lower contact 75° to C.A. several fractures with potassic alteration. There is also several vugs and an inclusion of granodiorite. | | | | | | | | | | | |
| | | 313.3 ½" irregular quartz vein with epidote and fluorite and chlorite. | | | | | | | | | | | |
| | | 318-322.3 darker pink altered zone epidote and calcareous material in some fractures. Occasional small vugs. | | | | | | | | | | | |
| | | 327.4-329 dark pink alteration 4% epidote with several epidote filled fractured numerous small vugs. 1% | | | | | | | | | | | |

RIO TINTO CANADIAN EXPLORATION LIMITED
DIAMOND DRILL RECORD

HOLE No:
68
PAGE No:
8

| FOOTAGE | | DESCRIPTION | SAMPLE No | FOOTAGE | | LENGTH | | | | |
|---------|-----|---|--------------|---------|----|--------|--|--|--|--|
| from | to | | | from | to | | | | | |
| | | magnetite. | | | | | | | | |
| | | 329-347 whitish grey granodiorite with minor pink alteration biotite is fairly fresh but is surrounded by epidote and trace garnet. | | | | | | | | |
| | | 331-332 1-2% pyrite | | | | | | | | |
| | | 347-381.5 increase in pink (potassic) alteration. 1% pyrite. | | | | | | | | |
| | | 347-348 3% pyrite | | | | | | | | |
| | | 355.7 1" pink aplite contacts sharp at 75° 2% pyrite in granodiorite at lower contact. | | | | | | | | |
| | | 360.7-361.2 several epidote filled fractures. | | | | | | | | |
| | | 265-265.6 finer grained grey sili- cified epidote zone 3% pyrite. | | | | | | | | |
| | | 378.2 ¼" quartz vein with 5-8% pyrite minor chalcopyrite. | | | | | | | | |
| | | 379.5-380.9 darker pink alteration with several epidote filled frac- tures. Minor calcareous material in fractures. | | | | | | | | |
| | | 383.8-385 1-2% pyrite | | | | | | | | |
| | | 385.6-386.7 aplite very fine grained pink mafic poor rock contacts sharp 60-70° to core axis. Several epi- dote filled fractures minor hematite and pyrite. | | | | | | | | |
| | 387 | E.O.H. | | | | | | | | |
| | | CASING PULLED 40' OF CASING HOST IN HOLE | | | | | | | | |
| | | BRADLEY BROS. DIAMOND DRILLING | | | | | | | | |

PATRICIA
MINING DIV.
R R S T M G D
JUL - 7 1980
AM 7:00 PM 4:58

RIO TINTO CANADIAN EXPLORATION LIMITED

DIAMOND DRILL RECORD

LOCATION: L116E 129+50N

HOLE NO
60

AZIMUTH: 180°

PROPERTY: PIDGEON MOLYBDENUM

DIP: -45° at collar LENGTH: 447' ELEVATION: 9997.94 CLAIM NO: Pa 511791

STARTED: March 23, 1980 CORE SIZE: "NQ" DATE LOGGED: March 26, 1980 SECTION: L116E

COMPLETED: March 25, 1980 DIP TESTS: -45° @ 150' -42° @ 447'
-45° @ 300'; LOGGED BY: K. Blewett

PURPOSE: To test mineralization at granite/volcanic contact at northwesterly end of Lateral Lake. *W. B. ...*

| FOOTAGE | | DESCRIPTION | SAMPLE NO | FOOTAGE | | LENGTH | | | | | |
|---------|-------|--|-----------|---------|----|--------|--|--|--|--|--|
| from | to | | | from | to | | | | | | |
| 0 | 37 | Casing | | | | | | | | | |
| 37 | 165.7 | Andesite flow-tuff. Fine grained green chlorite schist. The rock is fairly homogeneous. It is foliated 70° to C.A. There is up to 5-8% localized biotite generally occurring in thin fractures. There are 5% well stretched feldspar blebs which probably represent amygdules throughout this section. Some of these feldspar blebs are sericitic. There are also several coarser grained gabbroic looking sections in this core - Their contacts are sharp to gradational. The rock is non calcareous intruded by occasional quartz vein and has minor pyrrhotite in foliation plane that makes core weakly magnetic. | | | | | | | | | |
| | | 57.5-67.5 medium grained green. Massive to schistose rock towards contacts. Contacts appear gradational, the core is weakly magnetic pyrrhotite and consists of medium grained chloritic amphibole crystals in a feldspar-chlorite-biotite matrix. | | | | | | | | | |

RIO TINTO CANADIAN EXPLORATION LIMITED

DIAMOND DRILL RECORD

HOLE NO:

69

PAGE NO:

2

| FOOTAGE | | DESCRIPTION | SAMPLE NO | FOOTAGE | | LENGTH |
|---------|----|---|-----------|---------|----|--------|
| from | to | | | from | to | |
| | | 92-93.7 quartz-epidote fracture zone | | | | |
| | | 99-99.3 Quartz feldspar vein 50-60° to C.A. country rock is chlorite epidote rich at contacts several large pyrrhotite blebs minor pyrite. | | | | |
| | | 101 2" quartz feldspar vein 20° to C.A. | | | | |
| | | 101.8 1.5" irregular quartz feldspar vein. Minor pink alteration 3-4% pyrrhotite | | | | |
| | | 102.8 ½" quartz-feldspar cross cutting some epidote fracture 3% pyrrhotite | | | | |
| | | 103.7 1" quartz-feldspar vein. Minor pyrite in occasional fractures. Contacts 60° to C.A. | | | | |
| | | 104.5-106 white quartz-feldspar vein along one side of core and crossing width of core at lower contact. Minor pink alteration 5% pyrrhotite minor pyrite in fractures at lower contact. | | | | |
| | | 109.5-110.5 slight coarsening of grain size. | | | | |
| | | 112.6-113.1 Aplite contact's sharp 70° to C.A. light greyish pink fine grained mafic poor rock. Numerous thin calcareous filled fractures 30° to C.A. 3% pyrrhotite at contacts. .5% magnetite. No mo. | | | | |
| | | 118-120.8 Numerous quartz veins and epidote quartz filled fractures. 2-4% pyrrhotite minor pyrite in fractures and quartz veinlets. | | | | |

RIO TINTO CANADIAN EXPLORATION LIMITED

DIAMOND DRILL RECORD

HOLE NO:

69

PAGE NO:

3

| FOOTAGE | | DESCRIPTION | SAMPLE NO | FOOTAGE | | LENGTH |
|---------|----|--|-----------|---------|----|--------|
| from | to | | | from | to | |
| | | 121.2-125.5 Feldspar porphyry light grey felsic rock with 5% biotite and < 5% clouded feldspar phenocrysts 1/2" diameter. 2-3% disseminated pyrite-pyrrhotite upper contact broken; lower contact sharp at 75° several inclusions of chlorite schist. ≤ 1" wide. | | | | |
| | | 128-130.2 several quartz-epidote filled fractures 80° to C.A. These quartz-epidote fractures are cut by later fractures. 1% pyrrhotite minor chalcopyrite | | | | |
| | | 130.5-131.5 Feldspar porphyry upper contact sharp at 70° to C.A. Numerous fractures 25° to C.A. with minor pink alteration surrounding them. | | | | |
| | | 132.3-133.1 slight coarsening of grain size contacts are gradational. There is a 2" feldspar porphyry with abundant weakly pink stained cross cutting fractures. | | | | |
| | | 146-147.3 Feldspar porphyry lower contact sharp 75° to C.A. 5% feldspar phenocrysts 2-3% pyrite pyrrhotite. | | | | |
| | | 148.4-155.5 coarsening of grain size looks gabbroic rock becomes finer grained towards contact. Lower con- | | | | |

RIO TINTO CANADIAN EXPLORATION LIMITED
DIAMOND DRILL RECORD

| |
|----------------|
| MOLE NO: 69 |
| PAGE NO: 4 |

| FOOTAGE from to | DESCRIPTION | SAMPLE NO | FOOTAGE from to | LENGTH |
|--------------------|---|--------------|--------------------|--------|
| | tact at a 1" quartz vein 70° to C.A. | | | |
| | 157-163 increase in biotite. This section contains 3-5% pyrite pyrrhotite along foliation planes and thin fractures. Minor chalcopyrite. | | | |
| | 157.1 2" white quartz vein 70° to C.A. minor sulphides filling some fractures. | | | |
| 165.7 181.4 | Metagabbro medium to coarse grained green rock consisting of chloritic amphibole crystals to ¼" in a feldspathic matrix. The rock becomes finer grained towards the contacts and the contacts are arbitrary. Occasional fractures with calcareous material. | | | |
| 181.4 206 | Andesite tuff - flow green chlorite schist but slightly coarser grained than the overlying andesite flow. This section lacks the oval feldspar blebs (or amygdules). The rock is more gneissic and there is an increase in epidote. Lower contact broken. 182 2" feldspar porphyry the contacts are sharp at 70° 183-185 feldspar porphyry contacts sharp at 65° to C.A. moderately fractured with pyrite in some fractures. | | | |
| | 185.4 1" quartz vein with minor pink alteration 5% pyrite. | | | |

RIO TINTO CANADIAN EXPLORATION LIMITED

DIAMOND DRILL RECORD

HOLE NO.

69

PAGE NO.

5

| FOOTAGE | | DESCRIPTION | SAMPLE NO | FOOTAGE | | LENGTH |
|---------|-------|--|-----------|---------|----|--------|
| from | to | | | from | to | |
| | | Below 190 there is a slight increase in fractures. There are also several thin quartz veins with pink alteration below 190. Becomes more calcareous towards lower contact. 200 5" zone with 3-4% rusty pyrite blebs | | | | |
| 206 | 208.6 | Aplite to granodiorite. Very blocky section. Upper 1' is pink aplitic below this the rock is greyer with 10% clouded feldspar phenocrysts. There is an inclusion of andesite within this section. Lower contact 60° to C.A. numerous fractures and minor quartz veinlets. | | | | |
| 208.6 | 212 | Andesite green well altered chlorite schist. Abundant swirly pink aplitic material from 210.5 to 212. There are quartz filled tension fractures within the aplitic and thin quartz veinlets cross cutting chlorite filled fractures. | | | | |
| 212 | 327 | Granodiorite pinkish medium grained generally very weakly to non sericitic granodiorite with 5% biotite. The biotite is weakly chloritic and generally surrounded by epidote. There is minor garnet with the biotite-epidote. The biotite is weakly foliated 80° to core axis but becomes more strongly foliated in places. The granodiorite has calcareous material on some fractures. 0.5% disseminated magnetite. | | | | |

RIO TINTO CANADIAN EXPLORATION LIMITED
DIAMOND DRILL RECORD

| |
|----------------|
| HOLE NO. 69 |
| PAGE NO. 6 |

| FOOTAGE from to | DESCRIPTION | SAMPLE NO | FOOTAGE from to | LENGTH |
|--------------------|--|--------------|--------------------|--------|
| | 212-229 the granodiorite is finer grained greenish pink fractured and gneissic. There are several inclusions of andesite and one pink aplite. Small vugs generally localized and are hematite stained. | | | |
| | 222.8-223.6 pink aplite upper contact broken lower contact 70° to C.A. pink stained fractures cut the aplite and granodiorite. | | | |
| | 229-232.7 The biotite is more chloritic and the rock is weathered. There is several vugs with hematite stain and several quartz veins. | | | |
| | 229 - 1" | | | |
| | 230.9-231.6 .5-1% magnetite in the granodiorite and no Mo. There are also several epidote filled fractures. | | | |
| | 239.1-240.3 3% pyrite | | | |
| | 254.8-255.2 white quartz vein 45° to C.A. pink alteration for 1/2" on granitic side of contacts. The quartz contains several magnetite crystals. | | | |
| | 261.3-265 the mafics are better foliated at 80-85° to C.A. | | | |
| | 282.6-283 fine grained grey granodiorite. Contacts sharp at 80° 3% fine magnetite. | | | |
| | 294.3 2-3% magnetite over 2" with minor quartz. | | | |

RIO TINTO CANADIAN EXPLORATION LIMITED

DIAMOND DRILL RECORD

MOLE No:
69
PAGE No
7

| FOOTAGE | | DESCRIPTION | SAMPLE No | FOOTAGE | | LENGTH |
|---------|-----|--|-----------|---------|----|--------|
| from | to | | | from | to | |
| | | 298.5 ¼" fracture filled with quartz calcareous material with chlorite and fine euhedral pyrite. Also there is an increase in potash alteration. | | | | |
| | | 305 3" white quartz vein 85° to C.A. | | | | |
| | | 306.5-306.7 white quartz vein block. The granodiorite at the quartz contacts is finer grained and hematite stained - stronger epidote-calcareous material at lower contact. | | | | |
| | | 307.9 ½" quartz vein with minor coarse pink feldspar. 45° to C.A. | | | | |
| | | 309 1" quartz vein blocky | | | | |
| | | 314.1-316 finer grained greyer granodiorite minor quartz 0.5% pyrite | | | | |
| | | 316.3 2" white quartz vein. The granite contacts are bleached and calcareous. | | | | |
| | | 325-326 thin 1/16" quartz muscovite filled fracture 15° to C.A. | | | | |
| 327 | 447 | Granodiorite similar to overlying granodiorite but is not as pink and is greyer. This granodiorite is medium grained with 5% biotite which is surrounded by minor epidote and chlorite minor garnet. In places the granodiorite is moderately to well foliated at 70° to C.A. making rock gneissic. There, minor darker pink alteration mainly associated with | | | | |

RIO TINTO CANADIAN EXPLORATION LIMITED
DIAMOND DRILL RECORD

| |
|----------------|
| HOLE NO. 69 |
| PAGE NO. 8 |

| FOOTAGE from to | DESCRIPTION | SAMPLE NO | FOOTAGE from to | LENGTH |
|--------------------|---|--------------|--------------------|--------|
| | fractures and locally weakly sericitic. Minor quartz and aplite. 0.5-1% magnetite. | | | |
| | 328 ½"-1" quartz vein 20° to C.A. with pink alteration at contacts. | | | |
| | 330-330.2 quartz vein contacts broke. Pink alteration over several inches at contacts. | | | |
| | 331.2 2" quartz vein 60° to C.A. | | | |
| | 337.6-337.8 quartz vein 30° to C.A. | | | |
| | 357.5 ½" quartz vein 70° to C.A. | | | |
| | 358.5 1" white quartz vein 55° to C.A. | | | |
| | 365 4% pyrite over 3" | | | |
| | 365.8-366 quartz vein 75° to C.A. well fractured. | | | |
| | 366.5 several large pyrite blebs with magnetite | | | |
| | 369 1" weak shear zone with epidote 2% fine pyrite | | | |
| | 375.6-378.3 pink aplite sharp contacts 70° to C.A. 2-3% pyrite in grano- diorite at upper contact. Lower 4" is gneissic. No Mo. Minor magnetite | | | |
| | 383-384 weak fracture zone with an increase in pink alteration | | | |
| | 390.3 1" quartz vein 25° to core 2% magnetite at contacts. | | | |
| | 391-391.5 3-4% magnetite and one fracture. 40° to core | | | |
| | 404.1 3" quartz vein with coarse pink pegmatite at lower contact 70° to C.A. | | | |

RIO TINTO CANADIAN EXPLORATION LIMITED
DIAMOND DRILL RECORD

HOLE NO:
69
PAGE NO:
9

| FOOTAGE | | DESCRIPTION | SAMPLE NO | FOOTAGE | | LENGTH |
|---------|----|---|-----------|---------|----|--------|
| from | to | | | from | to | |
| | | 406.1-407 mafic dyke fine grained grey rock contacts sharp 80° to core. | | | | |
| | | 407-407.5 increase in pink alteration. Weakly sheared numerous small vugs. 2% magnetite considerable epidote. | | | | |
| | | 412 ½" quartz vein 2% pyrite below lower contact. | | | | |
| | | 415.9 1" quartz vein 75° to C.A. | | | | |
| | | 417-417.6 quartz vein 10° to C.A. vugs with epidote and calcareous material at contacts. | | | | |
| | | 418 3" quartz vein 50° to C.A. | | | | |
| | | 422.3-424 3% pyrite 1% magnetite Several small vugs. | | | | |
| | | 430.4-431.7 Aplite pink fine grained mafic poor rock. Contacts sharp 85-90° minor magnetite | | | | |
| | | 433.2-433.6 Aplite same as 430.4-431.7 contacts sharp 85°-90° to core axis. | | | | |
| | | 434.2-434.5 Aplite pinkish grey fine grained mafic poor rock sharp contacts 80° to C.A. | | | | |
| 447' | | E.O.H. CASING PULLED BRADLEY BROS. DIAMOND DRILLING. | | | | |

P A T R I C I A
M I N I N G D I V.
JUL 5 1980
AM 7:00 PM 4:58

RIO TINTO CANADIAN EXPLORATION LIMITED
DIAMOND DRILL RECORD

LOCATION: L156+00E 133+07N

HOLE NO
70

AZIMUTH: 180°

PROPERTY: PIDGEON MOLYBDENUM

DIP: -45° at collar LENGTH: 357' ELEVATION: 10,003.91 CLAIM NO: Pa 532042

STARTED: March 27, 1980 CORE SIZE: "NQ" DATE LOGGED: March 30, 1980 SECTION: L156+00E

COMPLETED: March 29, 1980 DIP TESTS: 43.5° @ 150' LOGGED BY: K. Blewett

PURPOSE: To test mineralization in granite below
granite/volcanic contact on north shore of Lateral Lake

| FOOTAGE | | DESCRIPTION | SAMPLE NO | FOOTAGE | | LENGTH | | | | | | |
|---------|------|--|-----------|---------|----|--------|--|--|--|--|--|--|
| from | to | | | from | to | | | | | | | |
| 0 | 70 | Casing | | | | | | | | | | |
| 70 | 92 | Andesite medium grained dark green amphibolite. Consists of chloritized amphibole crystals to 1/16" in a feldspar matrix. There is minor biotite but it is not abundant. Some epidote. The rock is massive to weakly foliated at 55° to core axis - foliation and epidote become stronger towards lower contact. There are several aplitic intrusions at 85.5-85.9 (contains inclusion of andesite); 88.9-90. The aplitic contacts are sharp at 55-70° to C.A. There is minor magnetite in these aplite intrusions but no Mo. There is a feldspar porphyry 5-10% feldspar phenocrysts 1% magnetite from 84.0-84.5 sharp contacts. The amphibolite contains 1-2% disseminated pyrite cubes in the core minor pyrrhotite and trace chalcopyrite. Lower contact 70° to C.A. | | | | | | | | | | |
| 92 | 95.9 | Granodiorite to aplite pink fine grained mafic rock consisting of 10% feldspar phenocrysts in a fine grained feldspar | | | | | | | | | | |

RIO TINTO CANADIAN EXPLORATION LIMITED
DIAMOND DRILL RECORD

HOLE NO.

70

PAGE NO.

2

| FOOTAGE | | DESCRIPTION | SAMPLE NO | FOOTAGE | | LENGTH |
|---------|-------|---|-----------|---------|----|--------|
| from | to | | | from | to | |
| | | quartz matrix with minor biotite and epidote. Several fractures of 25° to C.A. 1% fine magnetite. | | | | |
| | | 93.6-94 whitish silicified granodiorite to aplite. 1" inclusion of andesite at lower contact. Several vugs and a quartz vein. | | | | |
| 95.9 | 96.6 | Andesite inclusion of amphibolite upper contact broken lower contact 80° to C.A. | | | | |
| 96.6 | 98.5 | Aplite and granodiorite fine grained mafic poor pink rock with 5% feldspar phenocrysts to 98. From 98-98.5 medium grained granodiorite with 5% mafics. .5% pyrite and magnetite. Contact between aplite and granodiorite is arbitrary. | | | | |
| 98.5 | 102.5 | Andesite amphibolite - chlorite and more epidote than overlying epidote 1-2% pyrite. Several short sections of aplite. Contacts are broken. | | | | |
| 102.5 | 261.7 | Granodiorite and aplite medium grained pink rock with 5% mafics, mafics consist of biotite that have undergone considerable alteration to epidote. There are 5% feldspar phenocrysts to 1/8" diameter. There are numerous short sections of aplite ranging from fine to medium grained in places are close enough together to | | | | |

RIO TINTO CANADIAN EXPLORATION LIMITED
DIAMOND DRILL RECORD

| |
|----------------|
| HOLE NO: 70 |
| PAGE NO: 3 |

| FOOTAGE from to | DESCRIPTION | SAMPLE No | FOOTAGE from to | LENGTH |
|--------------------|---|--------------|--------------------|--------|
| | to give rock a banded appearance. The medium grained sections look like mafic poor granodiorite minor pyrite 1% magnetite. | | | |
| | 104.8 1" irregular quartz vein | | | |
| | 105.7-106.7 fine grained pink aplite with lenses of medium grained, mafic poor granodiorite. No mo Contacts are arbitrary. | | | |
| | 117.6 10% pyrite along a 1.32" frac- ture minor tourmaline | | | |
| | 119.2 1/4" white quartz vein 70° to C.A. | | | |
| | 124 2.5" quartz vein 80° to C.A. No Mo | | | |
| | 128.7-130.5 aplite-granodiorite medium grained mafic poor rock. Contact sharp 80° to C.A. | | | |
| | 132-133.7 numerous fine grained apli- tic intrusions with a quartz vein along the side of the core. Some hematite small vugs and hematite below this. | | | |
| | 136 1/4" quartz vein along the side of core. Pink alteration at the con- tacts. | | | |
| | 138.6-141.6 several fine grained pink aplite intrusions to 3" wide at 80° to core up to 3% localized magnetite | | | |
| | 143.3-144.1 Aplite fine grained pink rock contacts sharp at 80° | | | |

RIO TINTO CANADIAN EXPLORATION LIMITED

DIAMOND DRILL RECORD

HOLE NO:

70

PAGE NO

4

| FOOTAGE | | DESCRIPTION | SAMPLE NO | FOOTAGE | | LENGTH |
|---------|-------------|--|-----------|---------|----|--------|
| from | to | | | from | to | |
| | | several fractures filled with hematite and epidote. | | | | |
| | 150.6-155 | Numerous fine grained pink aplite generally 2" but up to 6" wide contacts generally sharp at 80° to core. Minor pegmatite at the contact of some of these aplite intrusions. | | | | |
| | 57 | 1" quartz vein 75° to C.A. | | | | |
| | 161.4-169.0 | larger biotite blebs and much less altered to epidote. | | | | |
| | 169.0-169.3 | aplite fine grained pink 45° to core. | | | | |
| | 171.3 | ½" quartz vein 50° to core | | | | |
| | 172-173 | several fractures 30° to core | | | | |
| | 185.3-195.6 | numerous mafic poor medium grained section (aplite or granodiorite) within the granodiorite. | | | | |
| | 191 | several fractures and 1% pyrite | | | | |
| | 197.1-198.1 | medium grained mafic poor granodiorite contacts moderately sharp at 80° to core. 1-2% mafics. Hematite stain in one fracture. | | | | |
| | 202.1-203.4 | Aplite - mafic poor granodiorite fine to medium grained pink rock with 5-10% feldspar phenocrysts. Contacts sharp 85° to core | | | | |
| | 205-227.7 | several fine to medium grained pink mafic poor granodiorite or aplite ranging in width from under 1" to 2.5'. The contacts are generally | | | | |

RIO TINTO CANADIAN EXPLORATION LIMITED
DIAMOND DRILL RECORD

| |
|----------------|
| HOLE NO: 70 |
| PAGE NO: 5 |

| FOOTAGE | | DESCRIPTION | SAMPLE NO | FOOTAGE | | LENGTH |
|---------|----|---|-----------|---------|----|--------|
| from | to | | | from | to | |
| | | sharp at approximately 80° to core. There is minor fine grained aplite in this section. | | | | |
| | | 209.2-209.4 fine grained aplite minor quartz 3% pyrite with one large pyrite cube. | | | | |
| | | 221.3-222.3 fine to medium grained mafic poor aplite to granodiorite. Contacts sharp at 80° hematite in a quartz-feldspar fracture. | | | | |
| | | 225-227.7 several chlorite hematite filled fractures. | | | | |
| | | 232.4 ½" quartz-pegmatite 10° to core 3% magnetite | | | | |
| | | 235.6 2" irregular pink fine grained aplite | | | | |
| | | 242.4 ½" quartz vein 90° to core 5% pyrite. | | | | |
| | | 243.7 2" aplite 85° to C.A. minor quartz 2-3% pyrite - epidote on fracture. | | | | |
| | | 242-264 1-2% pyrite in fractures | | | | |
| | | 243.9 5-10% pyrite over 3" occurring in fractures. | | | | |
| | | 252.4-252.7 bleached granodiorite with numerous small hematite stained vugs. | | | | |
| | | 258.5 several large blebs of pyrite and a couple of smaller blebs of magnetite. | | | | |

RIO TINTO CANADIAN EXPLORATION LIMITED
DIAMOND DRILL RECORD

HOLE NO:
70

PAGE NO:
6

| FOOTAGE | | DESCRIPTION | SAMPLE NO | FOOTAGE | | LENGTH |
|---------|-------|---|-----------|---------|----|--------|
| from | to | | | from | to | |
| 261.7 | 322.6 | Granodiorite and aplitic section medium grained pink granodiorite with 5% mafics altering with a finer grained mafic poor (1-2% biotite epidote) apli- tic rock. The aplitic sections range in width from 1" to greater than 3" and are generally coarser grained than the typical aplite. 1% magnetite occurs throughout this section. No Mo The contacts between the granodiorite and aplitic rocks are generally sharp 65-75° to core. 273-274 fracture zone minor chlorite in fractures at 30° to C.A. 307-308.5 fracture zone thin fractures some filled with chlorite and others with hematite 75°-10° to core axis 315-319 fracture zone several fractures some with chlorite and others con- taining pink alteration for 1/8" on either side of the fracture. | | | | |
| 322.6 | 357.0 | Granodiorite pink medium grained granodio- rite with 5% biotite the biotite is foliated 65° to core. There are several aplitic sections within this zone. 324.6-325.5 grey granodiorite with 10% feldspar phenocrysts 15% fine biotite gives rock the grey colour 328.3-329.7 granodiorite is bleached and there are numerous fractures. | | | | |

RIO TINTO CANADIAN EXPLORATION LIMITED
DIAMOND DRILL RECORD

| |
|----------------|
| HOLE NO. 71 |
| PAGE NO. 2 |

| FOOTAGE | DESCRIPTION | SAMPLE | FOOTAGE | LENGTH |
|-----------|--|--------|---------|--------|
| from to | | No | from to | |
| | thin fracture planes and at the contact of occasional quartz veins. The Mily occurs below 46'. | | | |
| 46-46.5 | quartz vein with biotite | | | |
| 46.7 | fine mo crystals along a thin biotite fracture in a 1/2" quartz vein 0.01% Mo over 1/2". | | | |
| 48.5 | 1/2" quartz vein 20° to core with large blebs of pyrrhotite minor pyrite and chalcopyrite filling tension fractures. | | | |
| 54.9-55.8 | 1/2"-2" irregular quartz vein < 1% pyrite. Fine Mo crystals occur over a localized section of the contact. 0.008% Mo. | | | |
| 58.5-59.4 | gabbro is very chloritic | | | |
| 60.4 | several fine Mo crystals along a 1/16" biotite epidote filled fracture. | | | |
| 65 - 132 | the rock is finer grained more schistose (75° to core axis) There is an increase in biotite and epidote and fracturing. Also several granitic intrusions increase in pyrite. | | | |
| 67.5-68.5 | 4-5% pyrite with a 1" quartz vein and a 2" quartz-feldspar epidote vein with minor pink alteration. Thin quartz | | | |

RIO TINTO CANADIAN EXPLORATION LIMITED

DIAMOND DRILL RECORD

HOLE NO:

71

PAGE NO

3

| FOOTAGE | | DESCRIPTION | SAMPLE NO | FOOTAGE | | LENGTH |
|---------|-------------|--|-----------|---------|----|--------|
| from | to | | | from | to | |
| | | veins 1/16" wide cross cut this 2" quartz vein and most of the pink alteration occurs in the thin cross cutting veins. | | | | |
| | 72 | 1.5" irregular white quartz vein well fractured. | | | | |
| | 72.3-72.5 | 20% biotite | | | | |
| | 81.5-82.4 | fine grained light greenish grey sericitic granite - 5% feldspar phenocrysts to 1/8" diameter. Several fractures with weak pink alteration 1% pyrite. Contacts sharp at 90°. | | | | |
| | 99-100.7 | chlorite-biotite zone with 1-2% epidote. | | | | |
| | 100.7-102.8 | Pink Aplite with some coarser granodiorite upper contact biotite rich 70° to core. Lower contact sharp at 65° to core. Minor disseminate magnetite several Mo crystals, 0.01% Mo The lower contact is biotite chlorite epidote rich. With 3% pyrite over 4". | | | | |
| | 104.7 | 1/2" quartz vein 70° to core axis 8% pyrite andesite is very chloritic at contacts. | | | | |
| | 106.2 | 2" chlorite epidote shear zone with 3% pyrite | | | | |
| | 107.2-109.1 | Pink Aplite with some more mafic rich coarser granodiorite. Contacts broken. 2% magnetite 1% pyrite < .5% chalcopyrite | | | | |

RIO TINTO CANADIAN EXPLORATION LIMITED
DIAMOND DRILL RECORD

HOLE NO:

77

PAGE NO:

4

| FOOTAGE | | DESCRIPTION | SAMPLE NO | FOOTAGE | | LENGTH |
|---------|----|--|-----------|---------|----|--------|
| from | to | | | from | to | |
| | | several Mo crystals 0.008% Mo. The andesite at the lower contact is chlorite rich with 3-4% pyrite pyrrhotite and one small Mo crystal in a 1/16" cross cutting fracture | | | | |
| | | 112.7 ½" aplitic vein 70° to core one small Mo crystal | | | | |
| | | 113.7-117.9 Granodiorite weakly pinkish gray medium grained rock. There is ≤10% mafics consisting of fine biotite chlorite epidote. There is a 1" aplite intrusion and several fractures. The contacts are broken. There is 3-4% pyrite in andesite at the upper contact. 1-2% magnetite minor chalcopyrite There are several Mo crystals mainly near the aplite intrusion 0.005% Mo. | | | | |
| | | 120.3-123.0 Breccia zone fractured rock with epidote chlorite and quartz filling fractures 2% pyrite minor chalcopyrite | | | | |
| | | 123.0-123.6 irregular white quartz vein with inclusions of andesite 2-3% pyrite .5% chalcopyrite | | | | |
| | | 123.7 ½" granodiorite veinlet 70° to C.A. | | | | |
| | | 125.5-126.5 very blocky andesite. 126 ½" quartz vein 10% pyrite along 1/16" chlorite fracture. | | | | |
| | | 127.1 ½" white quartz vein 60° to C.A. fractured. 5% pyrite trace chalcopyrite. | | | | |

RIO TINTO CANADIAN EXPLORATION LIMITED
DIAMOND DRILL RECORD

| |
|----------------|
| HOLE NO: 71 |
| PAGE NO: 5 |

| FOOTAGE | DESCRIPTION | SAMPLE NO | FOOTAGE | LENGTH |
|---------|---|-----------|---------|--------|
| from to | | | from to | |
| | 128.1-129 Granodiorite medium grained grey rock with 10% coarse biotite crystals minor epidote and minor pink alteration towards lower contact. | | | |
| | 129.2 1" granodiorite veinlet 70° to C.A. 5% pyrite | | | |
| | 130.0-130.6 Aplite pink fine grained fractured rock. Upper contact broken lower contact 70° to C.A. minor magnetite several small Mo crystals 0.006% Mo | | | |
| | 131.5-131.9 Feldspar porphyry becomes fractured with potassic alteration towards lower contact. Contacts at 70-75° to C.A. 2-3% pyrite. | | | |
| 132.0 | 159.3 Andesite - diabase the rock is fine grained less schistose and more massive 1-3% pyrite | | | |
| | 135.3-137 several minor pyrite lenses | | | |
| | 136.5 2" quartz epidote vein 3% euhedral pyrite - 70° to C.A. weak potassic alteration | | | |
| | 137.1 1" quartz vein 70° to C.A. | | | |
| | 137.3 ½" quartz vein 80° to C.A. | | | |
| | 138 1" quartz vein 70° to C.A. 3-5% pyrite trace chalcopyrite | | | |
| | 141.1-141.5 white quartz vein upper contact broken; lower contact 30° to C.A. The quartz is fractured 3-4% pyrite. | | | |

RIO TINTO CANADIAN EXPLORATION LIMITED

DIAMOND DRILL RECORD

HOLE No:

71

PAGE No:

6

| FOOTAGE | | DESCRIPTION | SAMPLE NO | FOOTAGE | | LENGTH |
|---------|-----|--|-----------|---------|----|--------|
| from | to | | | from | to | |
| | | 141.9 1" feldspar porphyry 50° to core axis | | | | |
| | | 143-144 2-3% pyrite | | | | |
| | | 151-152.2 several ¼"-1" quartz veins 10°-70° to C.A. | | | | |
| | | 154.7 1" quartz vein 60° to C.A. 2% pyrite | | | | |
| | | 155-158.4 2-5% pyrite minor pyrrhotite mainly as thin lenses fracture fillings and some disseminated blebs. Several thin quartz veins = ¼" one large quartz vein from | | | | |
| | | 155.9-156.4 - 5% pyrite. | | | | |
| | | 158.0 1.5" quartz vein 70° to C.A. 10% pyrite | | | | |
| 159.3 | 387 | Granodiorite pink medium grained granodiorite 5% mafics consisting of biotite altering to epidote and chlorite. Potassic alteration is pervasive throughout the core. The mafics show a weak to moderate foliation at 65° to 70° to core axis. There are several fine grained aplite intrusions and some quartz veins and pegmatite but these are not extensive nor abundant. There are also several vuggy zones in this core generally associated with minor quartz and pegmatite zones and also bleached zones within the granodiorite. The rock is moderately fractured with small localized zones of more intense fracturing generally at 10°-30° to the core axis | | | | |

RIO TINTO CANADIAN EXPLORATION LIMITED
DIAMOND DRILL RECORD

HOLE NO:

71

PAGE NO:

7

| FOOTAGE | | DESCRIPTION | SAMPLE NO | FOOTAGE | | LENGTH |
|---------|-------------|---|-----------|---------|----|--------|
| from | to | | | from | to | |
| | | Some chlorite fractures cut the aplite. The upper contact is 70° to C.A. Minor pyrite and magnetite. | | | | |
| | 159.5-161.0 | Quartz pegmatite zone with some granodiorite. Several vugs and some chlorite filled fractures. | | | | |
| | 162.0-163.2 | Aplite pink fine grained mafic poor rock .5% magnetite contacts sharp 65° to core. Several fractures 60° to core. No Mo. | | | | |
| | 166.6 | 1" aplite 20° to C.A. This is cut by a ¼" quartz vein which is in turn cut by a chlorite quartz filled fracture with several blebs of pyrite. | | | | |
| | 168.4-168.8 | bleached vuggy zone 3% fine magnetite hematite stain in vugs and fractures several Mo crystals 0.009% Mo | | | | |
| | 169.2-169.9 | Aplite greyish pink fine grained several thin quartz chlorite biotite fractures 65° to C.A. 1-2% magnetite 1% pyrite contacts sharp at 70° No Mo. | | | | |
| | 172.5 | 1" quartz feldspar vein -40° to core. Numerous vugs. There are 4 Mo crystals in granodiorite near the quartz-feldspar contact. 0.01% Mo over 6". | | | | |

RIO TINTO CANADIAN EXPLORATION LIMITED
DIAMOND DRILL RECORD

HOLE NO.

71

PAGE NO.

8

| FOOTAGE | | DESCRIPTION | SAMPLE NO. | FOOTAGE | | LENGTH |
|---------|----|--|------------|---------|----|--------|
| from | to | | | from | to | |
| | | 173.2-173.9 vuggy zone with hematite and a ¼" pegmatite veinlet 30° to core epidote and magnetite in the vugs. | | | | |
| | | 174.8 ¼" aplite vein 30° to core | | | | |
| | | 175.0 1" quartz vein with pink alteration 2% fine magnetite often occurring in the potassic alteration. One Mo crystal in granodiorite below lower contact. Contacts at 25°. | | | | |
| | | 176-182 numerous small hematite stained vugs granodiorite is weakly bleached. | | | | |
| | | 176.5-179 fracture zone thin chlorite fractures 45° to core. Also a 1.5" quartz pegmatite vein very vuggy several Mo crystals 0.01% Mo. | | | | |
| | | 181-199 increase in schistosity 65-70° to core. | | | | |
| | | 181.4 ¼" quartz vein 70° to core | | | | |
| | | 193.6-195 3" well fractured quartz vein. Minor coarse pink feldspar. Several small clusters of small Mo crystals generally in granodiorite near quartz contact. One Mo crystal is bent similar to the foliation and the Mo appears to be associated with fine fractures. 0.02% Mo. | | | | |
| | | 195.6-198 numerous epidote-chlorite fractures 10-20° to core with minor calcareous material. More intense fracturing from 196-197.3. | | | | |

RIO TINTO CANADIAN EXPLORATION LIMITED

DIAMOND DRILL RECORD

HOLE No.

71

PAGE No

9

| FOOTAGE | | DESCRIPTION | SAMPLE No | FOOTAGE | | LENGTH |
|---------|-------------|---|-----------|---------|----|--------|
| from | to | | | from | to | |
| | | There are two large Mo crystals and several smaller Mo crystals in fractures and one 1/16" fracture coated with Mo 0.3% in the granodiorite. | | | | |
| | | Mo from 196-197.3 | | | | |
| | 204.5 | 1" quartz vein 20° to core considerable hematite in granodiorite surrounding contacts. One bleb of pyrite. | | | | |
| | 207.2 | small fine steely grey mineral surrounded by epidote. | | | | |
| | 212.4 | 1" quartz vein 25° to core, surrounded by several fractures. | | | | |
| | 217.7 | 2" white quartz vein potassic alteration of contacts. One bleb of fluorite contacts 35° to core. | | | | |
| | 218-219 | weak fracturing - filled with chlorite. | | | | |
| | 221 | 3/4" quartz vein with minor pegmatite surrounding granodiorite is bleached - several fractures close by. One Mo crystal in a fracture in granodiorite close to quartz vein. | | | | |
| | 222-224 | several thin chlorite filled fractures 10°-20° to core. | | | | |
| | 226 | 2" white quartz vein 30° to core. Some pegmatite and chlorite. | | | | |
| | 229.3-229.7 | Pink aplite sharp contacts 30° to core. Two thin epidote fractures cut the granodiorite and aplite. This aplite is medium grained (not the good fine grained aplite) but is mafic poor. | | | | |

RIO TINTO CANADIAN EXPLORATION LIMITED

DIAMOND DRILL RECORD

MOLE NO.

71

PAGE NO.

10

| FOOTAGE | | DESCRIPTION | SAMPLE NO. | FOOTAGE | | LENGTH |
|---------|----|---|------------|---------|----|--------|
| from | to | | | from | to | |
| | | 231.4 ¼" aplite veinlet 40° to core one Mo crystal in granodiorite at aplite contact. | | | | |
| | | 232 1" aplitic veinlet 50° to core. 3 Mo crystals in granodiorite below lower contact. | | | | |
| | | 233-234.7 two ¼" quartz veins 20° to core and several chlorite filled fractures. Cross cutting quartz veins at 35° to core 0.01% Mo | | | | |
| | | 247.6-249.3 weakly sheared zone with two 1" quartz veins and a 3" aplite with vugs. Several Mo crystals 0.009% Mo | | | | |
| | | 253.1-253.6 granodiorite becomes coarser and lacks mafics contact moderately sharp at 60°. | | | | |
| | | 258 1" quartz vein with pegmatite at edges 25° to core axis. | | | | |
| | | 262.5-263.5 irregular vuggy quartz vein also numerous thin chlorite fractures. The granodiorite is weakly bleached. | | | | |
| | | 269.5-270.7 Quartz vein with pegmatite fractured. Contacts at 30° to core. | | | | |

RIO TINTO CANADIAN EXPLORATION LIMITED
DIAMOND DRILL RECORD

| |
|----------------|
| HOLE NO. 71 |
| PAGE NO. 11 |

| FOOTAGE from | to | DESCRIPTION | SAMPLE No | FOOTAGE from | to | LENGTH |
|-----------------|----|---|--------------|-----------------|----|--------|
| | | 272-279 moderate fracture zone - thin chlorite filled fractures at 20° - 45° to the core. The granodiorite is weakly bleached. The best Mo mineralization occurs in this zone mainly from 273-274.5. There are abundant coarse Mo crystals from 273-274.5 along with a ½" quartz vein with abundant chlorite at contacts trending 05° to the core. The section from 273-274.5 averages 0.6% Mo. There are also several euhedral voids where Mo has either been weather out or lost during drilling. Over all this section averages 0.1-0.2% Mo. | | | | |
| | | 283.7 1" aplite-pegmatite zone fine grained at contacts coarser grained in core with hematite stain. Sharp contacts 70° to C.A. | | | | |
| | | 287-291.4 dark pink to red granodiorite due to increase in potassic alteration and abundant hematite stain minor irregular aplite and a 1" quartz vein 30° to C.A. Several Mo crystals in the core. 0.007% Mo. | | | | |
| | | 297.2-309 numerous pink fine to medium grained mafic poor aplitic veins generally sharp at 65° to C.A. These aplitic zones range from ½"-6" wide and are coarser - than the | | | | |

RIO TINTO CANADIAN EXPLORATION LIMITED
DIAMOND DRILL RECORD

| |
|----------------|
| HOLE NO. 71 |
| PAGE NO. 12 |

| FOOTAGE from | to | DESCRIPTION | SAMPLE NO | FOOTAGE from | to | LENGTH |
|-----------------|----|---|--------------|-----------------|----|--------|
| | | good fine grained aplite. 304.5-304.9 pegmatite zone. | | | | |
| | | 322.0-322.4 Aplitic intrusion fine to medium grained mafic poor simi- lar to intrusions from 297.2-309. Sharp contacts at 65°. | | | | |
| | | 324.6-325 Pink aplitic rock similar to 322.0-322.4 but has 10% feldspar phenocrysts to 1/8" sharp contacts at 40°. | | | | |
| | | 329.4-329.6 Pink aplitic rock simi- lar to 324.6-325. | | | | |
| | | 335.3-335.9 aplite with medium grai- ned mafic poor intrusion similar to 297.2-309 sharp contacts at 60° co core. | | | | |
| | | 336.3-337 irregular aplitic intrusion with 1% pyrite. | | | | |
| | | 337-338 several chlorite filled frac- tures. | | | | |
| | | 340-340.5 aplitic intrusion similar to 297.2-309. | | | | |
| | | 343.9 aplitic intrusion similar to 297.2-309 with 10% feldspar pheno- crysts to 1/8" | | | | |
| | | 348.3-348.7 10% white feldspar pheno | | | | |

RIO TINTO CANADIAN EXPLORATION LIMITED
DIAMOND DRILL RECORD

HOLE NO.
71
PAGE NO.
13

| FOOTAGE | | DESCRIPTION | SAMPLE NO | FOOTAGE | | LENGTH |
|---------|----|--|-----------|---------|----|--------|
| from | to | | | from | to | |
| | | crysts in a mafic poor zone | | | | |
| | | 351.6-352 pink aplite. 50° to core | | | | |
| | | 363.5-365.2 mafic poor granodiorite dyke - medium grained rock sharp contacts at 50°. There is a 3" inclusion of biotite granodiorite at 364.3. | | | | |
| | | 365.2-367 weak fracture zone. Several thin chlorite filled fractures 10° to 60° to core. | | | | |
| | | 377 4" fine grained pink aplite 60° to core. | | | | |
| | | 378-379.5 fine to medium grained pink aplitic intrusion. Little mafics some fracturing at lower contact. The granodiorite at either contact is sericitic and bleached. Also the lower contact is calcareous (crumbly). | | | | |
| 387 ✓ | | E.O.H. CASING PULLED BRADLEY BROS. DIAMOND DRILLING | | | | |

PATRICIA
MINING DIV.
D R 15 W 5 D
JUL - 1980
AM 7:00 PM 3:50

RIO TINTO CANADIAN EXPLORATION LIMITED

DIAMOND DRILL RECORD

LOCATION: L20+00E 125+25N
 AZIMUTH: 180°

HOLE NO
 72
 PROPERTY: PIDGEON MOLYBDENUM

DIP: -45° at collar LENGTH: 467 feet ELEVATION: 10,015.23 CLAIM NO: 532011
 STARTED: April 18, 1980 CORE SIZE: NQ DATE LOGGED: April 21, 22 SECTION:

COMPLETED: April 22, 1980 DIP TESTS: 45° at 150 feet LOGGED BY: U. Paltser
 45° at 300 feet

PURPOSE: To test EM anomaly and possible volcanic - intrusive contact *U. Paltser*

| FOOTAGE | | DESCRIPTION | SAMPLE NO | FOOTAGE | | LENGTH | | | | | | |
|---------|-------|--|-----------|---------|----|--------|--|--|--|--|--|--|
| from | to | | | from | to | | | | | | | |
| 0 | 20.0 | Casing - overburden | | | | | | | | | | |
| 20.0 | 467.0 | Granodiorite - weakly to moderately altered massive granodiorite with 10% chloritized biotite, 25% irregular quartz pools and 65% feldspar. Generally the granodiorite is pink to salmon coloured with some lighter bleached sections. There are no zones with widespread disseminated pyrite or magnetite nor significant inter-sections of quartz-pegmatite and aplite. From 20.3-20.5 finer grained silicified zone more abundant chlorite epidote seams and trace pyrite. At 28.2 a 1/4" quartz vein 40° to core and narrow epidote filled fractures at 30.2. A 1.5 inch patch of meta-volcanic andesite contains magnetite disseminations at 30.5. At 30.7 a 1/16 inch oxidized fracture 50° to core has a few molybdenum flakes and from 30.7-32.3 lmm molybdenum specks are disseminated in the granodiorite in trace amounts. A 2 inch wide pegmatite vein at 35° to core has 1/8 inch molybdenum grains | | | | | | | | | | |

RIO TINTO CANADIAN EXPLORATION LIMITED
DIAMOND DRILL RECORD

| |
|----------------|
| HOLE NO: 77 |
| PAGE NO: 2 |

| FOOTAGE from | to | DESCRIPTION | SAMPLE NO | FOOTAGE from | to | LENGTH |
|-----------------|----|---|--------------|-----------------|----|--------|
| | | in the granodiorite along the vein margin. Est. 1 $\frac{1}{8}$ from 34.5-35.5. Also 4 molybdenum flakes at 36.0 occur in the granodiorite at the margin of a 1 inch quartz-pegmatite vein (20 $^{\circ}$) | | | | |
| | | A chloritic blotch $\frac{1}{2}$ inch in diameter at 38.9 contains a 1/16 inch magnetite crystal. | | | | |
| | | After 39.0 the granodiorite is coarser grained with more conspicuous quartz pools. | | | | |
| | | At 43.0 a 2 inch wide zone of bright olive green epidote is present with a central quartz vein 2/5 inch wide. | | | | |
| | | The zone from 45-46 consists of a vuggy quartz-pegmatite containing traces of 1-2mm magnetite. Between 47-51 several 1/16 inch epidote filled fractures are oriented 30-60 $^{\circ}$ to core. | | | | |
| | | At 54.5 a $\frac{1}{2}$ inch quartz vein 20 $^{\circ}$ to core has 1 speck of molybdenum at 54.9. | | | | |
| | | From 55-62 the granodiorite is bleached - more sericitic. | | | | |
| | | At 62.8 a remnant of a 3/4 inch pyrite cube along an epidote fracture 45 $^{\circ}$ to core. | | | | |
| | | Between 63-80 several quartz veins none exceeding 5 inches in width and usually having chlorite and epidote at the vein contact. Vein orientation ranges from 20 $^{\circ}$ -50 $^{\circ}$. | | | | |

RIO TINTO CANADIAN EXPLORATION LIMITED
DIAMOND DRILL RECORD

| |
|----------------|
| HOLE No: 72 |
| PAGE No: 3 |

| FOOTAGE from to | DESCRIPTION | SAMPLE No | FOOTAGE from to | LENGTH |
|--------------------|---|--------------|--------------------|--------|
| | At 80.0 a vuggy quartz-pegmatite vein ½" wide 20° to core has a few molybdenum specks. Also traces of molybdenum at 85.9 and 86.2 in granodiorite near minor quartz veins. | | | |
| | Occasional magnetite blebs at 88.0 near 1 inch quartz pegmatite vein. | | | |
| | From 88.7-89.3 quartz vein running parallel to core, two molybdenum flakes adjacent to vein. | | | |
| | Between 95.5-96.8 irregular quartz vein 50% 30°-60° to core surrounded by bleached granodiorite. 98.0-98.7 as 95.5-96.8. | | | |
| | After 100 massive granodiorite hematitic colouration with chlorite. | | | |
| | From 107.0-107.8 broken quartz vein no sulphides. | | | |
| | Between 110-117 more numerous chlorite filled fractures (50° to core) and from 117-121 granodiorite is vuggy creamy coloured. | | | |
| | Foliated texture in granodiorite between 121-122.5 and 124.2-127 partially mylonitized granodiorite caused by chlorite-quartz-carbonate fractures and more intense epidote-chlorite oriented 60° to core. | | | |
| | At 130.7 a 1 inch pegmatite vein 30° to core has 2 specks of molybdenum in the adjacent granodiorite. | | | |
| | After 131 granodiorite becomes more massive, uniform with very few fractures and veins. The occasional quartz veins are oriented 30° to core | | | |

RIO TINTO CANADIAN EXPLORATION LIMITED
DIAMOND DRILL RECORD

| |
|----------------|
| HOLE NO: 72 |
| PAGE NO: 4 |

| FOOTAGE from to | DESCRIPTION | SAMPLE NO | FOOTAGE from to | LENGTH |
|--------------------|--|--------------|--------------------|--------|
| | and none exceed 2½ inches in width. Trace amounts of pyrite and magnetite occur at 194 the remainder of the core is barren. | | | |
| | After 206.5 stringers of epidote begin to appear. From 209-210 an aplitic zone with 10% quartz has a few molybdenum flakes at 209.2. Lower contact at 35°. The section from 214.5-218.3 has numerous chlorite filled fractures, quartz lenses and silicification. An aplitic-pegmatite vein contacts 35° from 223.0-223.7 is barren. | | | |
| | Between 226.8-232 a sheared foliated granodiorite as 121-122.5 and 124.2-127.0 includes quartz veins at 227.6, 229 and 230.2 with traces of pyrite. | | | |
| | After 232 more uniform granodiorite, minimal fractures (chlorite) and no significant quartz veins. | | | |
| | From 277-278 a zone with 80% quartz veins of irregular orientation and width mixed with chlorite. Trace pyrite 1 speck of molybdenum. At 281.9 5 molybdenum flakes disseminated in massive granodiorite. | | | |
| | Between 288.5-290.8 an aplite with no mafics or sulphides lower contact at 60°. | | | |
| | From 310.5-320 occasional 1/16-1/8 chlorite filled fractures 40° to core. One fracture per foot. Massive granodiorite between 320-362. | | | |

RIO TINTO CANADIAN EXPLORATION LIMITED
DIAMOND DRILL RECORD

| |
|----------------|
| HOLE No: 72 |
| PAGE No: 5 |

| FOOTAGE from to | DESCRIPTION | SAMPLE No | FOOTAGE from to | LENGTH |
|--------------------|---|--------------|--------------------|--------|
| | More fracturing after 362 with a 2 inch wide silicified band 35° to core. Usually an alteration halo occurs adjacent to fractures. | | | |
| | The zone from 369-370 consists of a dark green chlorite with 30% quartz as irregular blotches and angular fragments. It probably originated as a fracture or fault zone destroying or altering the feldspar but leaving the quartz relatively intact. A light green alteration of the granodiorite persists until 371 then the typical pinkish granodiorite. A narrow 2 inch quartz vein parallels the core from 379-380.5. Between 388.7-392 a quartz vein with pegmatitic margin at low angle to core includes chlorite seams along the vein. After 392 granodiorite is more fractured with chlorite in fractures and a bleached to greenish colouration. | | | |
| | 399.5-401.0 Quartz chlorite zone 45° to core contains a 9 inch wide quartz vein. No sulphides. | | | |
| | 408.2-409 as above but no vein, similar to 369-370. Similar quartz-chlorite zones averaging 3 inches in width at 416.3, 417.2, 419.4, 420, 427, 427.7, 429.3. | | | |
| | From 430-442 quartz-chlorite fracture zone (fault) dark green well fractured section with quartz fragments cemented by chlorite developing serpentinized slickensides along | | | |

RIO TINTO CANADIAN EXPLORATION LIMITED
DIAMOND DRILL RECORD

LOCATION: L188+00E 137+07N

HOLE NO 74

AZIMUTH 160°

PROPERTY Pidgeon Molybdenum

DIP -45° at collar

LENGTH 437'

ELEVATION 10,020.99

CLAIM NO: 532,008

STARTED April 27, 1980.

CORE SIZE NO

DATE LOGGED: May 1, 1980

SECTION L187+73E

COMPLETED April 29, 1980

DIP TESTS 43° @ 200'
41° @ 400'

LOGGED BY: K. Blewett

PURPOSE: Test Mo mineralization adjacent to
Denison hole # 12

K. Blewett

| FOOTAGE | | DESCRIPTION | SAMPLE NO | FOOTAGE | | LENGTH | | | | | | |
|---------|------|---|-----------|---------|----|--------|--|--|--|--|--|--|
| from | to | | | from | to | | | | | | | |
| 0 | 20 | casing | | | | | | | | | | |
| 20 | 74.3 | Andesite fine grained dark green weakly foliated (75° to core) well fractured rock. The fractures range from <1/16" to 2" wide and are generally filled with quartz. The predominant fracture trend is 70-90° to the core but there are numerous irregular fractures. This section is very blocky. There is ≤5% amygdules mainly from 20-38 and from 61.2-62. Epidote is common here mainly associated with fractures and breccia zones. The most intense epidote is from 44.5-45.2. There are several granitic intrusions at 45.7-46.2, 51.3-51.7, 56.3-56.9 and 67-69 - well fractured containing inclusions of andesite. There is minor disseminated pyrite with occasional lense of pyrite at 31-½" quartz with 10% pyrite. 80° to core; 143.3- | | | | | | | | | | |

RIO TINTO CANADIAN EXPLORATION LIMITED
DIAMOND DRILL RECORD

| | |
|----------|----|
| HOLE NO: | 74 |
| PAGE NO | 2 |

| FOOTAGE | | DESCRIPTION | SAMPLE NO | FOOTAGE | | LENGTH |
|---------|------|---|-----------|---------|----|--------|
| from | to | | | from | to | |
| | | 1/8" fracture 40° to core partly filled with pyrite. 148.5 pyrite blebs coating two thin quartz filled fractures and 57.4-63.5 2-3% pyrite with narrow zone up to 5% py. generally concordent to foliation. | | | | |
| 74.3 | 86.6 | Aplite coarse, mafic poor pink rock. several thin quartz veins 40° to core. These are cross cut by thin chlorite fractures 10°-15° to core. More intense fracturing at lower contact. Contacts sharp at 80° to core. Occasional bleb of pyrite 1% fine magnetite 0.03% fine Mo mainly between 76-79'. | | | | |
| 86.6 | 92.5 | Andesite fine grained dark green hard rock with diabasic texture. Occasional amygdules. There are numerous aplitic veinlets 1/8"-1" at 70° to core. The andesite is generally more chloritic near the aplite veinlets. Several fractures 10° to 50° to core. 1% pyrite in foliation plane. lower contact 70° to core. | | | | |
| | | 91.1-91.6 granodiorite white to pink well fractured | | | | |

RIO TINTO CANADIAN EXPLORATION LIMITED
DIAMOND DRILL RECORD

| | |
|----------|----|
| HOLE NO: | 74 |
| PAGE NO: | 3 |

| FOOTAGE | | DESCRIPTION | SAMPLE NO | FOOTAGE | | LENGTH |
|---------|-------|--|-----------|---------|----|--------|
| from | to | | | from | to | |
| | | There is a ½" aplite vein at 40° to core. 1% pyrite on 1% magnetite. | | | | |
| 92.5 | 113.8 | Granodiorite pink medium grained biotite granodiorite. 5% biotite altering to chlorite and epidote. Minor magnetite associated with some altered biotite. Occasional quartz blebs ≥ ½" and are deformed. The mafics are weakly foliated at 85° to core axis. There are a couple of thin quartz veins 80° to core - one of which has potassic alteration. There are several pink aplitic veins ½-1½" wide from 103-105.5. There are numerous chloritic fractures some about 70° to core and younger ones at 15° to core. These fractures are younger than the aplite veins. Lower contact 70° to C.A. | | | | |
| | | 108.7 - 109.7 potassic altered-zone aplite and pegmatite; large feldspar phenocrysts have tension fractures filled with quartz. | | | | |
| | | 3 Mo crystals | | | | |
| | | 0.007% Mo 1-2% | | | | |
| | | magnetite | | | | |

RIO TINTO CANADIAN EXPLORATION LIMITED
DIAMOND DRILL RECORD

| | |
|----------|----|
| HOLE NO: | 74 |
| PAGE NO | 4 |

| FOOTAGE | | DESCRIPTION | SAMPLE NO | FOOTAGE | | LENGTH |
|---------|-----|--|--------------|---------|----|--------|
| from | to | | | from | to | |
| 113.8 | 169 | Granodiorite 5% biotite but is finer grained moderately chloritic and biotite surrounded by minor epidote. This rock is not as pink as overlying granodiorite and is more granular. There are chlorite and epidote filled fractures. Generally 10°-40° to CA minor pyrite. Minor hematite stain along some crystal boundaries. numerous vuggy zones. | | | | |
| | | 120.4-121.0 pegmatite with blebs of quartz. A couple of chlorite fractures. One small Mo crystal. 0.003% Mo. | | | | |
| | | 127-134 Slight increase in chlorite fractures approximately 15-30° to CA. Minor calcareous material. Intense fracturing from 131.0-133.2 | | | | |
| | | 133.2 3% pyrite over 2". | | | | |
| | | 135-136 Several chlorite-epidote fractures 40° to core. | | | | |
| | | 137-147 slight increase in potassic alteration. | | | | |
| | | 145-147 several quartz blebs to ½" diameter. | | | | |

RIO TINTO CANADIAN EXPLORATION LIMITED
DIAMOND DRILL RECORD

HOLE No: 74

PAGE No: 6

| FOOTAGE | | DESCRIPTION | SAMPLE No | FOOTAGE | | LENGTH | | | | | | |
|---------|-------|--|-----------|---------|----|--------|--|--|--|--|--|--|
| from | to | | | from | to | | | | | | | |
| | | 163.7 one Mo crystal | | | | | | | | | | |
| | | 164 minor pegmatite several chlorite fractures. | | | | | | | | | | |
| | | Below 164.5 the granodiorite is moderately sericitic. | | | | | | | | | | |
| | | 167.1 small pegmatite bleb. granodiorite and pegmatite here are cut by a chlorite fracture. | | | | | | | | | | |
| | | 168.3 2" white quartz fractured with minor hematite stain contacts broken. | | | | | | | | | | |
| 169 | 295.5 | Granodiorite pink medium grained biotite granodiorite similar to section from 92.5-113.8 | | | | | | | | | | |
| | | Biotite is altering to chlorite and surrounded by epidote, moderately foliated at 75° | | | | | | | | | | |
| | | to core axis minor pyrite and magnetite. | | | | | | | | | | |
| | | 184-185 not as pin | | | | | | | | | | |
| | | 185.7-186.7 0.1% Mo scattered in granodiorite. Some mo occurs in a fractured another chlorite fracture in this section without Mo. several vugs. | | | | | | | | | | |

RIO TINTO CANADIAN EXPLORATION LIMITED

DIAMOND DRILL RECORD

| | |
|----------|----|
| HOLE No: | 74 |
| PAGE No: | 7 |

| FOOTAGE | | DESCRIPTION | SAMPLE No | FOOTAGE | | LENGTH | | | | | | |
|---------|----|--|-----------|---------|----|--------|--|--|--|--|--|--|
| from | to | | | from | to | | | | | | | |
| | | 189.3 ½" fracture 20° to core with pottassic alteration and 2Mo crvstals. Vugs nearby. | | | | | | | | | | |
| | | 204 4" pegmatite 10° to core | | | | | | | | | | |
| | | 205.5 2" white quartz vein 60° to core. | | | | | | | | | | |
| | | 205.5-213 the grandiorite is weakly bleached. | | | | | | | | | | |
| | | 207- 6" zone with several chlorite fractures. 50° to core. | | | | | | | | | | |
| | | 208-209 white quartz vein 10° to core. Several vugs. | | | | | | | | | | |
| | | 212.0-212.6 white quartz vein 10° to core axis. | | | | | | | | | | |
| | | 213 1" quartz-chlorite vein 50° to core. | | | | | | | | | | |
| | | 213-214 vuggy zone some hematite interstitial to feldspar. There is a ½" fracture with potassic alteration here trending 30° There is 0.2% Mo over this section mainly associated with the fracture. | | | | | | | | | | |

RIO TINTO CANADIAN EXPLORATION LIMITED

DIAMOND DRILL RECORD

| | |
|----------|----|
| HOLE NO: | 74 |
| PAGE NO: | 8 |

| FOOTAGE | | DESCRIPTION | SAMPLE NO | FOOTAGE | | LENGTH | | | | | | | | | | | | | |
|---------|----|--|-----------|---------|----|--------|--|--|--|--|--|--|--|--|--|--|--|--|--|
| from | to | | | from | to | | | | | | | | | | | | | | |
| | | 216-221 Numerous vugs, often with hematite stain. | | | | | | | | | | | | | | | | | |
| | | 218.7 ½" quartz vein 30° to core. | | | | | | | | | | | | | | | | | |
| | | 220 2" aplite 20° to core | | | | | | | | | | | | | | | | | |
| | | 226 ½" fracture 30° to C.A. Several chlorite fractures near by. | | | | | | | | | | | | | | | | | |
| | | 230 several small pyrite blebs | | | | | | | | | | | | | | | | | |
| | | 234.5-242.7 Aplite zone - 8 aplite dyker ranging from ½" to just less than 1' wide. They all have sharp contacts at 40° to C.A. There is no Mo in these dykes. | | | | | | | | | | | | | | | | | |
| | | 239 two small Mo crystals in the granodiorite. | | | | | | | | | | | | | | | | | |
| | | Below 248 there is a general increase in fracturing with more intense fracturing from | | | | | | | | | | | | | | | | | |
| | | 248 - 317. Chlorite and minor calcareous material fill fractures all at 40° to core axis. | | | | | | | | | | | | | | | | | |
| | | 251.2-252.2 two aplitic intrusions 1" and 3" wide 40° to core. Quartz associated with | | | | | | | | | | | | | | | | | |
| | | the wider aplite vein. Generally below 252.2 the granodiorite is not as pink | | | | | | | | | | | | | | | | | |

RIO TINTO CANADIAN EXPLORATION LIMITED

DIAMOND DRILL RECORD

| | |
|----------|----|
| HOLE NO: | 74 |
| PAGE NO: | 9 |

| FOOTAGE | | DESCRIPTION | SAMPLE NO | FOOTAGE | | LENGTH |
|---------|----|---|-----------|---------|----|--------|
| from | to | | | from | to | |
| | | as the overlying grano-diorite and is weakly bleached. | | | | |
| | | 254 8" quartz vein 40° to core axis well fractured (chlorite fractures 45° to C.A.) Stronger pink alteration at contacts. | | | | |
| | | 263.7 2" quartz vein - 50° to C.A. | | | | |
| | | 264.5 2" quartz vein - 70° to C.A. pink alteration at contacts. 1% pyrite | | | | |
| | | 265.2 2" wide chlorite quartz zone-fracture. | | | | |
| | | 266.2-267.2 white quartz vein fractured and blocky. | | | | |
| | | 269 ½" quartz-chlorite vein 5% fine pyrite. | | | | |
| | | 270 2" quartz vein 10° to C.A. large vug. | | | | |
| | | 273 two small Mo crystals in granodiorite small vugs near by. | | | | |
| | | 277.6 2" quartz vein | | | | |
| | | 278.7 minor aplite and several thin chlorite fractures 50° to C.A. several small Mo crystals some in the fractures 0.008% Mo over 1'. | | | | |

RIO TINTO CANADIAN EXPLORATION LIMITED

DIAMOND DRILL RECORD

| | |
|----------|----|
| HOLE NO: | 74 |
| PAGE NO | 10 |

| FOOTAGE | | DESCRIPTION | SAMPLE NO | FOOTAGE | | LENGTH | | | | |
|---------|-------|--|-----------|---------|----|--------|--|--|--|--|
| from | to | | | from | to | | | | | |
| | | 280.7 ½" quartz vein 20° to C.A. large vug. Quartz vein is younger than several thin chlorite fractures 70° to C.A. 3 Mo crystals in granodiorite near quartz vein. | | | | | | | | |
| | | 283.1 2" white quartz vein minor epidote. 2Mo crystals above upper contact. | | | | | | | | |
| | | 285.4-288.8 white quartz vein moderately fractured some. This vein is cutting some chlorite fractures. Upper contact irregular-lower contact is 60° to C.A. 1½ pyrite at lower contact. | | | | | | | | |
| | | 295 1" aplite 70° to core axis. | | | | | | | | |
| 295.5 | 342.8 | Coars Aplite pink mafic poor rock. Numerous chlorite filled fractures. Looks similar to coarse aplite in hole 70. Upper contact sharp at 40° lower contact 30° to C.A. Minor vugs and some small chlorite patches. | | | | | | | | |
| | | 301.6 1" white quartz vein 35° to C.A. | | | | | | | | |
| | | 306.7-307.7 Irregular quartz, vein older than chlorite fractures | | | | | | | | |
| | | 317-319 very blocky increase in chloritic fracturing. | | | | | | | | |

RIO TINTO CANADIAN EXPLORATION LIMITED

DIAMOND DRILL RECORD

| | |
|----------|----|
| HOLE NO: | 74 |
| PAGE NO: | 12 |

| FOOTAGE | | DESCRIPTION | SAMPLE NO | FOOTAGE | | LENGTH | | | | | | |
|---------|-----|---|-----------|---------|----|--------|--|--|--|--|--|--|
| from | to | | | from | to | | | | | | | |
| | | 368-373 Well fractured, 10°-40° to C.A. chlorite filling fractures weak pink alteration 4 small Mo crystals 0.006% Mo | | | | | | | | | | |
| | | 373-375.6 Coars pink aplite upper contact arbitrary lower contact sharp 70° to C.A. minor quartz bleb with coarse pink feldspar. Several chlorite fractures. 0.1% Mo mainly clustered close the quartz bleb. The granodiorite below the lower contact is vuggy. | | | | | | | | | | |
| 375.6 | 437 | Granodiorite - 35% fine biotite with epidote. Rock is also becoming greyer. Some aplite generally less fractured. Occasional quartz bleb to 1/4". | | | | | | | | | | |
| | | 375.6-379 small Mo crystals in the granodiorite mainly centered around a 1.5" quartz vein at 377.5 trending 30° to core. There is pink alteration along the edge of the quartz vein. Mo occurs predominately in the adjacent granodiorite with several Mo crystals along the quartz granodiorite contact. Also several Mo crystals are cutting thin chlorite fractures. | | | | | | | | | | |



52F16NW0057 52F16NW0014 ECHO

900

| <u>Claim No.</u> | <u>Days</u> | <u>Claim No.</u> | <u>Days</u> |
|------------------|-------------|-------------------------------------|-------------|
| 512191 ✓ | 40 | 53201 ⁷ 6 * ✓ | 20 |
| 512192 ✓ | 40 | 532015 ✓ | 20 |
| 512193 ✓ | 40 | 532064 ✓ | 20 |
| 512194 ✓ | 40 | 532063 ✓ | 20 |
| - 512195 ✓ | 40 | 532040 ✓ | 20 |
| 512196 ✓ | 40 | 532041 ✓ | 20 |
| 512197 ✓ | 40 | - 532042 ✓ | 20 |
| 512198 ✓ | 40 | 532047 ✓ | 20 |
| 512199 ✓ | 40 | 532046 ✓ | 20 |
| 512200 ✓ | 40 | - 532045 ✓ | 20 |
| 512201 ✓ | 40 | 532054 ✓ | 20 |
| 512202 ✓ | 40 | 532053 ✓ | 20 |
| - 512203 ✓ | 40 | 532052 ✓ | 20 |
| 512204 ✓ | 40 | 532051 ✓ | 20 |
| 511797 ✓ | 40 | 532050 ✓ | 20 |
| 511792 ✓ | 40 | 532049 ✓ | 20 |
| - 511791 ✓ | 40 | 532048 ✓ | 20 |
| 531996 ✓ | 20 | 532012 ✓ | 20 |
| 531999 ✓ | 20 | - 532059 ✓ | 20 |
| 532000 ✓ | 36 | 532057 ✓ | 20 |
| 532036 ✓ | 20 | 532056 ✓ | 20 |
| 532024 ✓ | 20 | 532055 ✓ | 20 |
| 532023 ✓ | 20 | 436811 | 20 |
| 532022 ✓ | 20 | | |
| 532021 ✓ | 20 | | |
| 532020 ✓ | 20 | | |
| 532019 ✓ | 20 | | |

* In reference to Wayne Benham's letter of June 18, 1980, these claims are listed as shown on the claim map. In the event of the correction of the numbers, the claim adjacent to and immediately south of claim 15232 will have 200 days assessment credits and the next claim south 20 days assessment credits.

Work was performed on Mining Claims numbered: 532013, 532014, 512203, 532061, 532059, 512195, 511791, 532042, 532045, 532043, 532044, 532011, 532008.

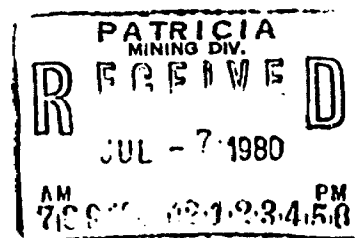
PATRICIA
MINING DIV.
R E R I S H W E D
JUL - 7 1980
AM 7:00 PM 7:00 12:34.58

Required information to accompany Report of Work of July 2, 1980

Hole - 62 - 187' -45°, NQ core
63 - 397' -45°, NQ core
64 - 111' -45°, NQ core
65 - 376' -45°, NQ core
66 - 373' -45°, NQ core
67 - 249' -50°, NQ core
67A - 381' -55°, NQ core
68 - 387' -50°, NQ core
69 - 447' -45°, NQ core
70 - 357' -45°, NQ core
71 - 387' -45°, NQ core
72 - 467' -45°, NQ core
74 - 437' -45°, NQ core

Drilling performed - February 25 - April 22, 1980

Drilling contractor: Bradley Bros. Diamond Drilling
98 - 14th Street
P.O. Box 367
Noranda, Quebec
J9X 5A9





Ministry of Natural Resources

M-1874

M-2236

A separate form is required for each type of work to be recorded.

80-38

THE MINING ACT REPORT OF WORK

To the Recorder of Patricia Mining Division

I, Pigeon Molybdenum Mines Ltd. A38086 name of Recorded Holder Prospector's Licence

2400, 120 Adelaide St. W. Toronto, Ontario Post Office Address

do hereby report the performance of 4556 days of diamond drilling type of work

not before reported to be applied on the following contiguous claims

Table with 6 columns: Claim No., Days, Claim No., Days, Claim No., Days. Lists various claim numbers and durations, including 'continued on the attached sheet'.

All the work was performed on Mining Claim (s) See attached list (In the case of geological and/or geophysical survey (s) where more than 18 claims are involved attach a schedule)

READ CAREFULLY: THE FOLLOWING INFORMATION IS REQUIRED BY THE MINING RECORDER.

- For Manual Work, Stripping or Opening up of Mines, Sinking Shafts or Other Actual Mining Operations - Names and addresses of the men who performed the work and the dates and hours of their employment. For Diamond and other Core Drilling - Footage, No. and angle of holes and diameter of core. Name and address of owner or operator of drill. Dates when drilling was done. Signed core log and sketch in duplicate. For Compressed Air or Other Power Driven or Mechanical Equipment Type of drill or equipment. Names and addresses of men engaged in operating equipment and the dates and hours of their employment. For Power Stripping - Type of equipment. Name and address of owner or operator. Amount expended. Dates on which work was done. Proof of actual cost must be submitted within 30 days of recording. With each of the above types of work sketches are required to show the location and extent of the work in relation to the nearest claim post. In the case of diamond or other core drilling the sketch must be submitted in duplicate. For Geophysical, Geological, Geochemical Surveys and Expenditure Credits - the name of author of report. Covering dates of survey (linecutting & office). Type of instrument used. Total amount of expenditure. Technical reports, maps, expenditure breakdown, receipts must be filed in duplicate with the Minister within 60 days of recording. For Land Survey - the name and address of Ontario Land surveyor.

The Required Information is as Follows: (Attach a list if this space is insufficient)

See attached list

Date July 2, 1980

Signature of Recorded Holder or Agent

The Mining Act Certificate Verifying Report of Work

I, W. Benham

c/o Rio Tinto Canadian Exploration Limited, 85 Richmond St. W. Toronto (Post Office Address)

hereby certify:

- 1. That I have a personal and intimate knowledge of the facts set forth in the report of work annexed hereto, having performed the work or witnessed same during and/or after its completion. 2. That the annexed report is true.

Dated July 2, 1980

PATRICIA MINING DIV. JUL - 7 1980 AM 7:00 PM 4:34:53

Signature

P. 436811

THE PENALTY FOR MAKING A FALSE STATEMENT IN THIS REPORT AND/OR CERTIFICATE IS \$500. OR SIX MONTHS IMPRISONMENT OR BOTH

LATERAL LAKE

Pa 532013

Pa 532060

15232

* 62 -45°

63 -45°

TL90N



Pa 532016

SHOW AS
532017 IN
CLAIM NO.

Pa 532062

Pa 532014

1" = 200'

Prdgeon Molybdenum Mines Ltd.

TL80N

Scale 1" = 200'
Echo Twp., Ontario

TL90N

Pa 53201

LIBBE

LIBBE

Walter Bertha

Pa 512204

Pa 532059

N
⊕
↑

#66
-45° TL

#67A
-55°
#67
-50°

Pa 512203

Pa. 532061

1" = 200'

MOLY
LAKE

Pidgeon Molybdenum Mines Ltd.
Echu Twp., Ontario
Scale: 1" = 200'

Wayne Benton

L140E

Pa 512202

L148E

Pa 532063

L156E



Pa 532056

Pa 532055

TL 90 N

Pa 512194

Pa 512195

#68
-50'

Pa 512198

WEBB TWP
ECHO TWP

1" = 200'

Pidgeon Molybdenum Mines Ltd.
Echo Twp., Ontario
Scale 1" = 200'

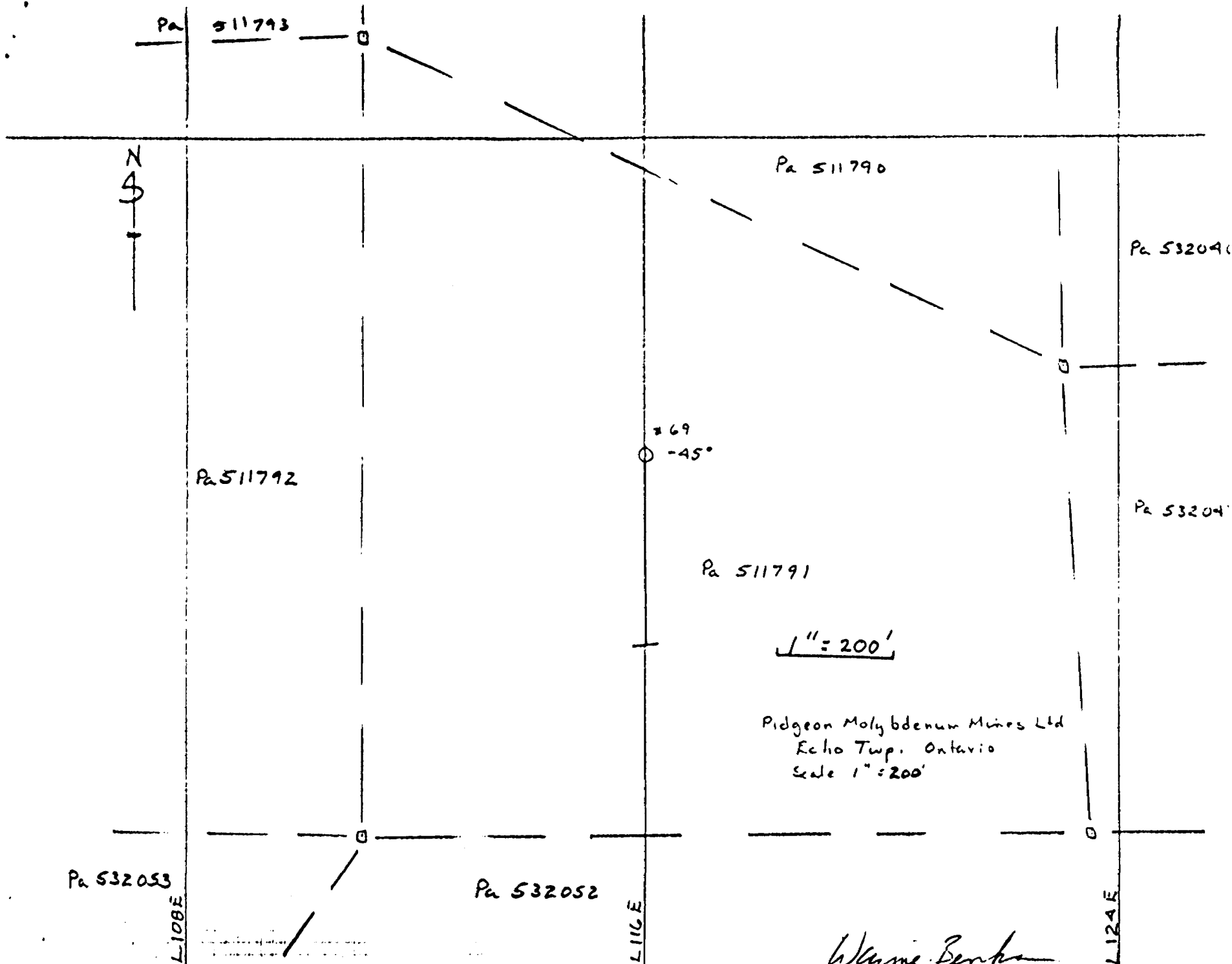
Pa 512197

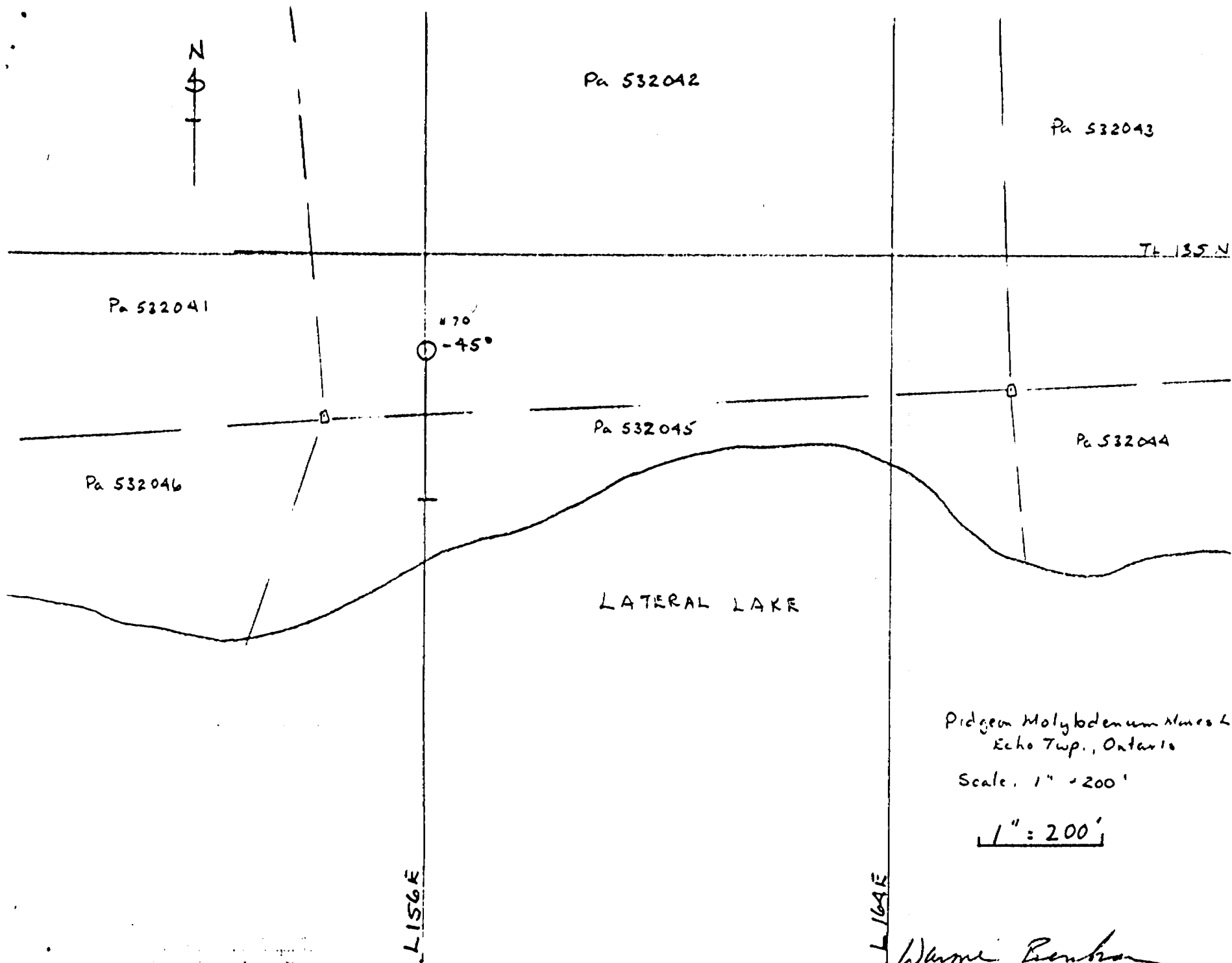
Pa 512196

L100E
L100E

TL 80 N

Wayne Barber



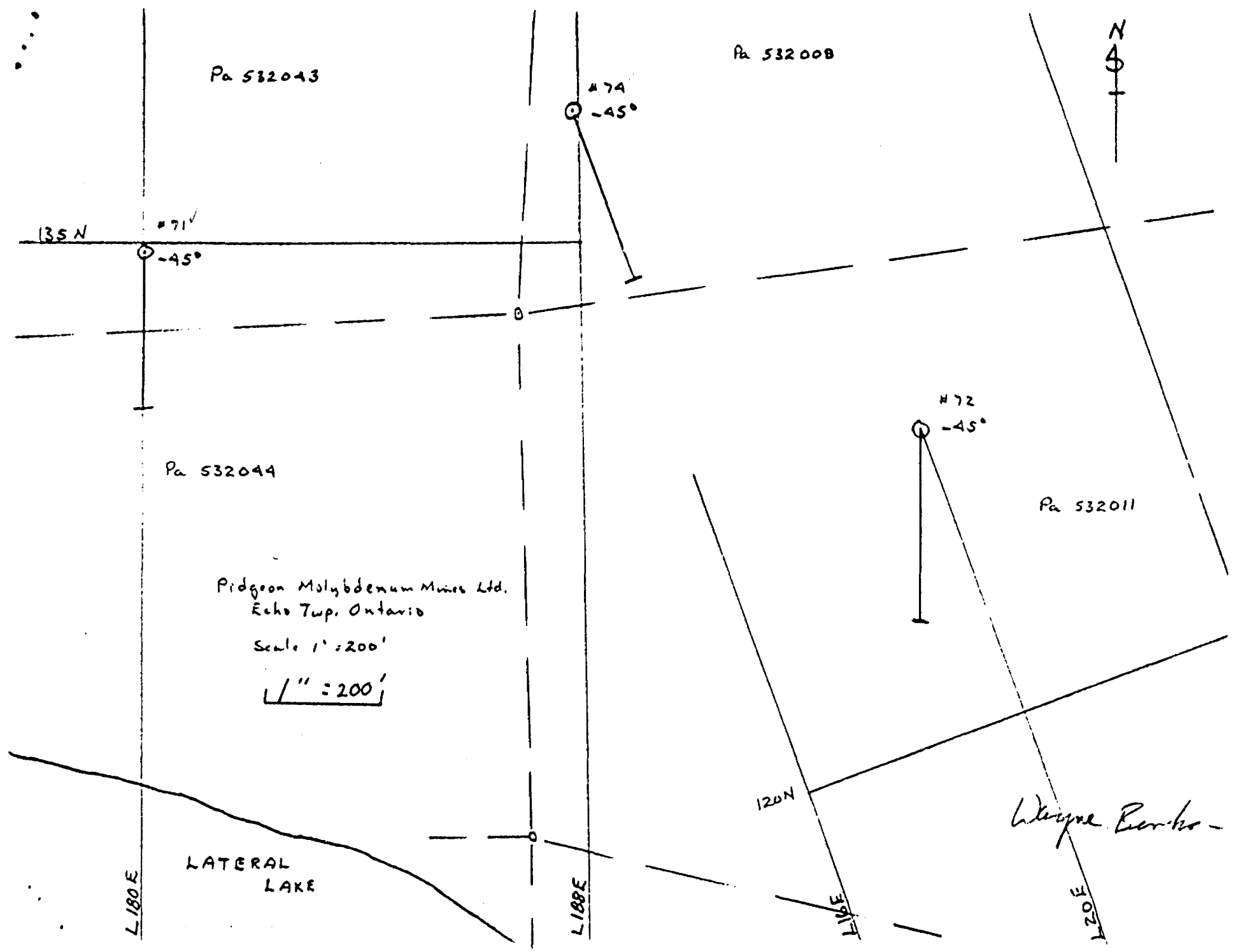


Pidgeon Molybdenum Mines &
Echo Twp., Ontario

Scale. 1" = 200'

1" = 200'

Wayne Benson



Pa 532043

Pa 532008



#74
-45°

135N

#71
-45°

Pa 532044

#72
-45°

Pa 532011

Pidgeon Molybdenum Mines Ltd.
Echo Twp. Ontario

Scale 1" = 200'

1" = 200'

LATERAL
LAKE

Wagon Run -

L180E

L188E

L195E

L205E

120N

Webb Township
M-1874

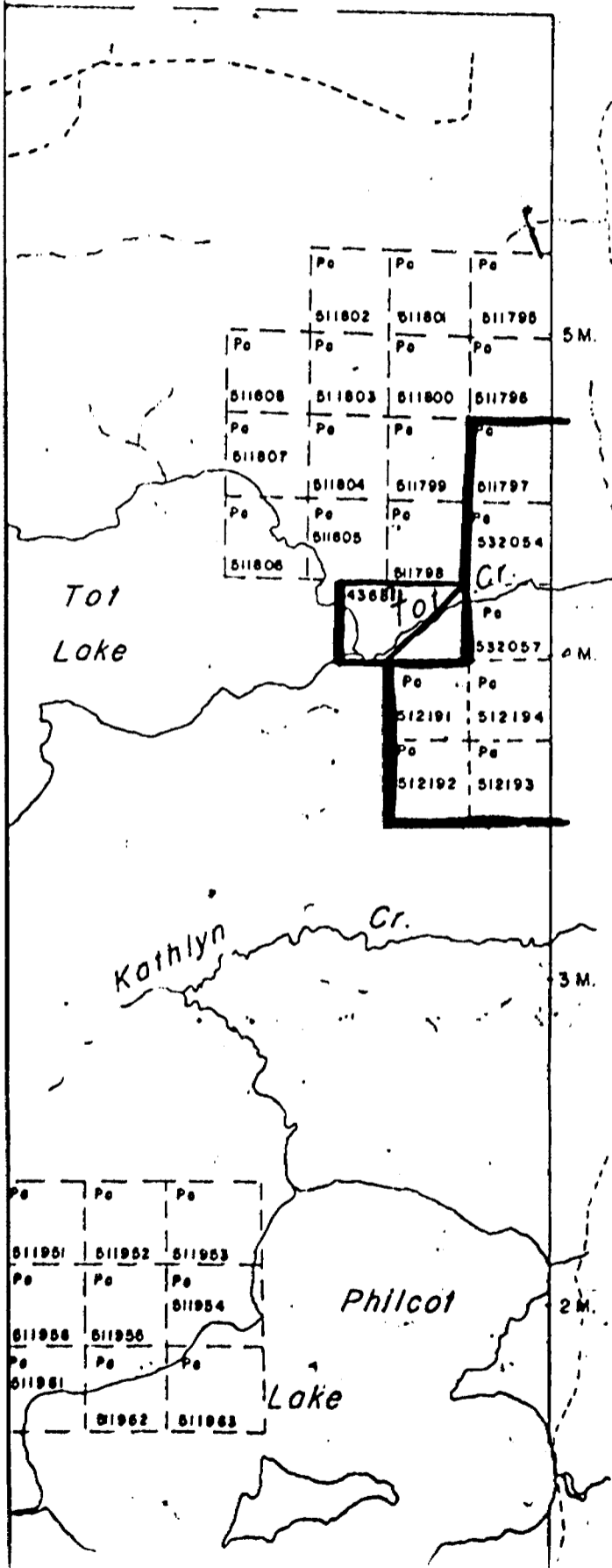
THE TOWNSHIP
OF

WEBB

DISTRICT OF
KENORA

PATRICIA
MINING DIVISION

SCALE: 1-INCH 40 CHA



LEGEND

- PATENTED LAND
- CROWN LAND SALE
- LEASES
- LOCATED LAND
- LICENSE OF OCCUPATION
- MINING RIGHTS ONLY
- SURFACE RIGHTS ONLY
- ROADS
- IMPROVED ROADS
- KING'S HIGHWAYS
- RAILWAYS
- POWER LINES
- MARSH OR MUSKEG
- MINES
- CANCELLED

NOTES

400' Surface Rights Reservati
around all Lakes and Rivers.

Nov. 8/79
Feb. 25/80

Echo Township
M-2236

LOMOND Tp. M.2251

