



52F16NW0078 52F16NW0027C1 ECHO

010

Diamond Drilling

Township ECHO

Report NO: 10

Work performed by: CONECHO MINES

Claim NO	Hole NO	Footage	Date	Note
KRL ²³¹⁰¹ 20017	1	792'	May/50	
KRL 23119	3	792'	June/50	
	<u>2DH</u>	<u>1584'</u>		

Notes:

Property

Coneccho Mines

9-1-21

DIAMOND DRILL RECORD

Hole Number

1

Sheet Number

1

Section From

To

Location:

Lat.

1180 N.

Dep.

1910 E.

Elevation of Collar

Datum

Direction at Start:

Bearing

N. 33° 30' W.

Dip

45° deg.

Started

May 22nd

Completed

May 31st

Ultimate Depth

792

Proposed Depth

Depth Feet	FORMATION	Sample No.	Width of Sample	Gold \$	Sludge Gold \$
0'-111'	Overburden: 0' to 55' clay; 55' to 108' quick sand; 108' to 111', gravel and quick sand.				
111'-274'	Spherulitic lavas: 111' to 150', fine grain, fairly acid, grey to light green with some alt.; occasional, nat gtz str. up to one inch in width; where altered, nodules are partially or fully replaced with py. and tourmaline.				
	128'-123.4': reddish feldspathic alt.				
	136'-141': highly altered spherulitic lavas; fine dis, disseminated py.; tiny blue gtz. str. fairly well min.	31	5.0	Nil	
	141'-144': Alt. spherulitic lavas; two 1/2 inch gtz. str.; some scattered py. as replacement in nodules.	27	3.0	Tr.	
	144'-146.5': slightly altered lavas; one 1/2 inch str.; some fine disseminated py.	32	2.5	Nil	

Signed

D. F. Leggett

Drilled by

Canadian Toy year

Property Conecho Mines

DIAMOND DRILL RECORD

Hole Number 1Sheet Number 2

Section From To

Location: Lat. 1180 N.Dep. 1910 E.

Elevation of Collar

Datum

Direction at Start: Bearing N. 95° 30' W.Dip 95 deg.Started May 22^dCompleted May 31stUltimate Depth 792

Proposed Depth

Depth Feet	FORMATION	Sample No.	Width of Sample	Gold \$	Sludge Gold \$
	150'-198': Lavas are fine grained but slightly darker in color with occasional g.t. st. and Sulphides.				
	198'-248': Lavas darker green and slightly coarser grained.				
	251'-272': highly silicified two feet barren g.t.				
	250.4'-252.9': highly silicified lavas, fairly well min. with fine py. and pyr.; occasional 1/4 inch g.t. st.; blue silicifications; py. size up to 1/2 inch	28	2.5	0.04	
	271.3'-273.9': Same as #28 - one inch plat st.	29	2.6	Nil	
274'-309'	Fine grained andoites and tuffs, with scattered fine py. throughout; tuffs from 290.6' to 295'-magnetic				

Signed

D. P. King, etc.

Drilled by

Canadian Longyear

Property Conecho Mines

DIAMOND DRILL RECORD

Hole Number 1
 Sheet Number 3
 Section From To

Location: Lat. 1180 N.
 Dep. 1910 E.
 Elevation of Collar
 Datum
 Direction at Start: Bearing N. 23° 30' W
 Dip 45° dy.

Started May 22^d
 Completed May 31st
 Ultimate Depth 792
 Proposed Depth

Depth Feet	FORMATION	Sample No.	Width of Sample	Gold %	Sludge Gold %
	303.8'-306.2': Lenticled dark laves; one inch irregular str. with $\frac{3}{4}$ inch cube of py. at 304' - $\frac{1}{2}$ inch str. with fair amount of chalcopyrite in fairly coarse py. at 305.4' - little disseminated py. and chalcopyrite in balance.	30	2.4	trace	
309-315	Very coarse grained with much hornblende - possible basic dyke - scattered fine py. and occasional thread of pyrrhotite - magnetic.				
315-322	medium grained andesites - sulphides as above - magnetic.				
322-331.6	322'-331.6': dyke as at 309'. 329'-325': possible fault zone - dyke rotten and apparent water escape - fair amount of disseminated sulphides - magnetic.				
331.6-355.4	331.6'-355.4': fine grained andesites and tuffs - magnetic.				

Signed D. J. Gault

Drilled by Canadian Inyan

Property Conecho Mines

DIAMOND DRILL RECORD

Hole Number 1Sheet Number 4

Section From To

Location: Lat. 1180 N.
Dep. 1910 EStarted May 22^d

Elevation of Collar

Completed May 31st

Datum

Ultimate Depth 792Direction at Start: Bearing N 23° 30' W.
Dip 95 deg.

Proposed Depth

Depth Feet	FORMATION	Sample No.	Width of Sample	Gold \$	Sludge Gold \$
	334'-336': tuffs slightly fractured and alt. - 3 inches of g.t. at 335.5' with little py. at walls - at 342' slightly greenish (a plate) alt.				
355.4'-364'	fairly light colored hornblende - diorite dyke - Lit. with fine str. - py. and fair magnetite.				
364'-434'	Fine grained tuffs or andesites - magnetite min. with py. and fpy. as threads. - at 380' two inches g.t. str. with py. - Porphy highly micaeous, becoming darker at 434'.				
434'-454'	Very dark coarse grained dyke with g.t. carrying fair amount of disseminated py and fpy. - High percentage of silica				
454'-465'	Fine grained highly chloritic andesites - thread of py. or fpy.				
465'-471'	Basalt dyke disseminated w threads of py. and fpy. - possibly grain of sphalerite.				

Signed W. H. H. H. H.

Drilled by

Canadian Tongue

Property

Conecho Mines

DIAMOND DRILL RECORD

Hole Number

1

Sheet Number

6

Section From

To

Location: Lat.

1180 N.

Dep.

1910 E

Elevation of Collar

Datum

Direction at Start: Bearing

N. 37° 20' W.

Dip

95° dip.

Started

May 22^d

Completed

May 31st

Ultimate Depth

792

Proposed Depth

Depth Feet	FORMATION	Sample No.	Width of Sample	Gold \$	Sludge Gold \$
5365'-569'	560' to 569': possible andesite - extremely highly alt. and completely so that very little if any of original constituents remain.				
	To 557' alt. red and quite sil. - from 557' alt. sericite and occasional small qtz. str.				
569'-571'	qtz. feldspar porphyry highly altered.				
571'-584.5'	Andesite highly sericitized and sheared. - Occas. sericite - to str.				
584.5'-598.5'	qtz. feldspar porphyry highly altered.				
598.5'-615.5'	Andesites highly altered - Vans of red alteration - possible carbonates or sulphides leached from rock and from 600' on very probably major fault structure.				
615.5'-623.5'	qtz. feldspar porphyry or possible feldspar porphyry, sheared and altered.				

Signed

D. J. [Signature]

Drilled by

Canadian Tongue

Property

Concecho Mines

DIAMOND DRILL RECORD

Hole Number

1

Sheet Number

7

Section From

To

Location:

Lat.

1180 N.

Dep.

1910 E.

Elevation of Collar

Datum

Direction at Start:

Bearing

N 23° 20' W.

Dip

45 deg.

Started

May 22^d

Completed

May 31st

Ultimate Depth

792

Proposed Depth

Depth Feet	FORMATION	Sample No.	Width of Sample	Gold \$	Sludge Gold \$
623.5-792'	Andesite highly altered but with alt. less pronounced from 696' on - From 690' to 715' reddish brown alt. phase.				
715'-739'	alt. sericitic.				
739'-768'	Varying degrees of red alt.				
768'-end of hole:	alt. sericitic with some leaching and shearing.				
End of Hole 792 Ft.					

Signed

D. L. H. W.

Drilled by

Canadian Logging

Property

Cuello Mines

9-1-22

Hole Number

J

DIAMOND DRILL RECORD

Sheet Number

1

Section From

To

Location:

Lat.

N-2568

Dep.

E-19435

Elevation of Collar

Datum

Direction at Start:

Bearing

N-21° 30' W.

Dip

45 deg.

Started

June 12th

Completed

June 8th

Ultimate Depth

834

Proposed Depth

Depth Feet	FORMATION	Sample No.	Width of Sample	Gold \$	Sludge Gold \$
0'-44'	Casing - Sand.				
44'-48.5'	Highly sericitized schist.				
48.5'-52.5'	Sheared micaceous tuffs - carb. - str. slightly magnetic - possible iron formation.				
52.5'-56'	Highly sericitized schist.				
56'-62.1'	Sheared micaceous tuffs				
62.1'-68.4'	qtz. feldspar - two inches qtz., no min at 62.1.				
68.4'-148.5'	Interbedded tuffs and dark fine grained greenstone thin threads of pyrr. along bedding, and clear planes. - From 108 m, green stone, little coarsed grained - occasional thin qtz. carb. str.				
148.5'-153.5'	Grey green medium grained granodiorite dyke.				

Signed

S. L. Luzzatto

Drilled by

Canadian Ingeen

Property Conecho MinesHole Number 3

DIAMOND DRILL RECORD

Sheet Number 2

Section From _____ To _____

Location: Lat. N-2558Dep. E-1143.5

Elevation of Collar _____

Datum _____

Direction at Start: Bearing N-21°30' W.Dip 5 deg.Started June 1stCompleted June 8thUltimate Depth 339

Proposed Depth _____

Depth Feet	FORMATION	Sample No.	Width of Sample	Gold \$	Sludge Gold \$
153.5'-171'	Fine grained andesites (ANDESITES)				
171'-177.5'	Basic dyke medium grained, slightly magnetic-				
177.5'-242'	Interbedded tuffs and fine grained andesites - occas, small barrened qtz. str.				
242'-282'	Diorite, fairly coarse grained - or possibly coarse flow phase.				
282'-288.3'	Tuffs				
288'3-294'	Feldspar porphyry light grey				
294'-369'	Andesites fine grained with occasional narrow tuff pyrite at 325' three inches qtz. str. - little				
	333'-342': Occasional yellow green alt.				

Signed V. H. [unclear]Drilled by Canadian Trench

Property

Conecho Mines

DIAMOND DRILL RECORD

Hole Number

3

Sheet Number

3

Section From

To

Location:

Lat.

N-2568

Dep.

E-1943.5

Elevation of Collar

Datum

Direction at Start:

Bearing

N-21030' W.

Dip

75 deg.

Started

June 1st

Completed

June 8th

Ultimate Depth

834

Proposed Depth

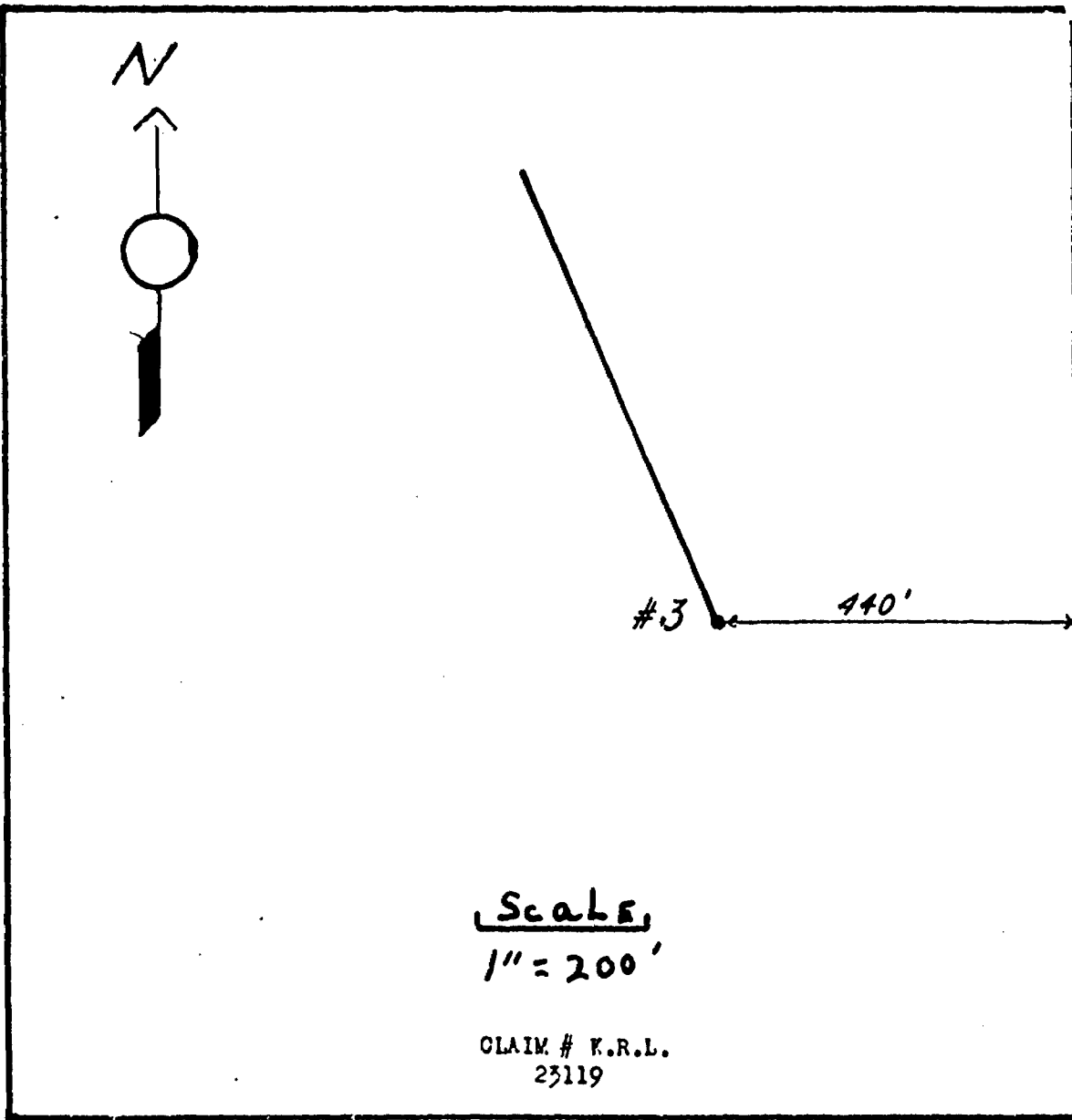
Depth Feet	FORMATION	Sample No.	Width of Sample	Gold \$	Sludge Gold \$
369'-375'	Dyke clay, talc and some-what porphyritic -				
375'-394.5'	Andesites - occasional laminated qtz. str.				
394.5'-418'	Int. bedded tuffs and iron formations - The latter ranging from 2' to 5' and containing occasional well mineralized tiny qtz. str.				
418'-550'	Tuffs - at 510', 5' str., little pyri. and chlorophyllite at margin At 546', in rocks of qtz. mineral as above.				
550'-834	Fine to medium grained andesites				
	End of Hole 834				

Signed

D. Chy...
D. Chy...

Drilled by

Canadian Engineer



CONECHO MINES LIMITED

PLAN SHOWING LOCATION OF DIAMOND DRILL HOLE.

June 26th, 1950

June 26-1950 D. P. [Signature]

52 F / 16 NW - 0027 - C1

Load: - Combo

Diamond Drilling

Township of ECHO

Report NO: 24

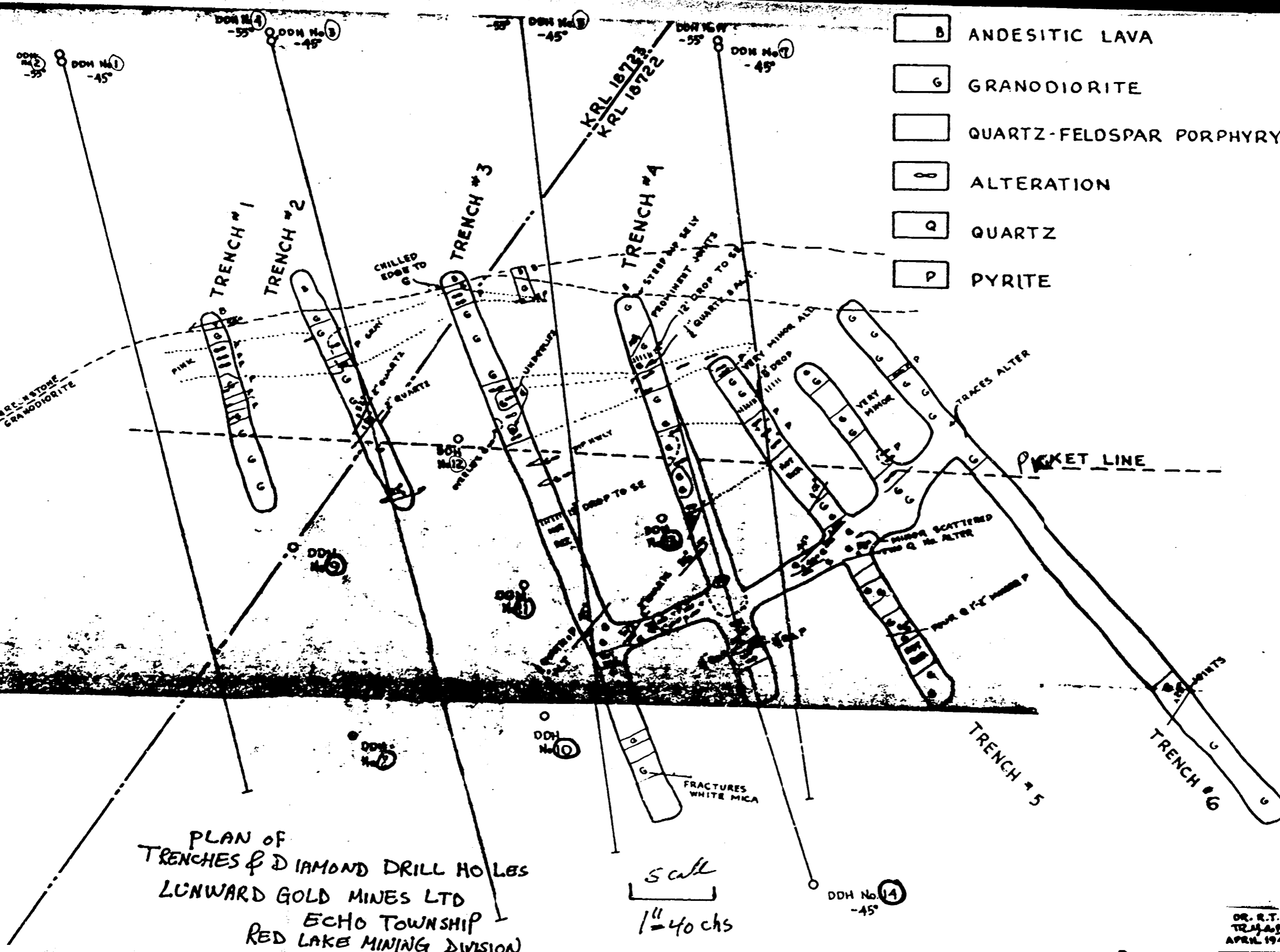
Work performed by: Lunward Gold Mines Limited

Claim NO	Hole NO	Footage	Date	Note
KRL 18723	1		July/45	
	2		July/45	
	3		July/45	
	4		July/45	
	5		July/45	
KRL 18722	7		July/45	
	8		July/45	
	9		July/45	
	10		July/45	
	11		July/45	
	12		July/45	
	13		July/45	
	14		July/45	

13 DH

Notes:

Diamond Drill Logs are not available



- B ANDESITIC LAVA
- G GRANODIORITE
- QUARTZ-FELDSPAR PORPHYRY
- / ALTERATION
- Q QUARTZ
- P PYRITE

PLAN OF
TRENCHES & DIAMOND DRILL HOLES
LUNWARD GOLD MINES LTD
ECHO TOWNSHIP
RED LAKE MINING DIVISION

Scale
1" = 40 chs

DR. R.T.
TR 45-65
APRIL 194



ECHO TOWNSHIP

Scale
1" = 40 chns

CON. 3

8

7

6

5

4

3

2

1

CON. 2

18775

18774

18727

18726

18768

18769

18772

Cross-Echo Lake

A.R.L.

North Showing

18719

18720

18721

18725

18767

18770

18771

S.V.

226 P

Franciscan Lake

St. Lawrence Highway

A.R.L.

18812

18724

18723

18722

18773

18812

CON. 1

drill site

Gold Showings: —

9 dth to SE
1" N to NW
6" vertical

15 total

LUNWARD GOLD MINES LTD.
ECHO TOWNSHIP, ONT.
SKETCH MAP SHOWING LOCATION ETC.
Scale: 3 inches to 1 mile

