



52F16NW0080 52F16NW0013D1 ECHO

010

Diamond Drilling

Township of ECHO

Report NO: 25

Work performed by: Goldlund Mines Limited

Claim NO	Hole NO	Footage	Date	Note
PA 358054	735-1	167'	Nov/73	(1)
	735-2	158'	Nov/73	(1)
	735-3	36'	Nov/73	(1)
	<u>30H</u>	<u>361'</u>		

Notes:

(1) #19-74



THE MINING ACT - DEPARTMENT OF MINES  
**DIAMOND DRILLING LOG**

Start a new page for every new hole, but fill in top portion of form only on first page for each hole.

FILL IN ON EVERY PAGE

HOLE NO. **735-1** PAGE NO. **1**

DRILLING COMPANY <b>N. Morissette Ltd.</b>		NO. AND ELEVATION	BEARING OF HOLE FROM TRUE NORTH <b>N110°W</b>	TOTAL FOOTAGE <b>167'</b>	DIP OF HOLE AT COLLAR <b>75</b>	LOCATION OF HOLE IN RELATION TO A FIXED POINT ON THE CLAIM	MAP REFERENCE NO. <b>M 2236</b>	CLAIM NO. <b>358054</b>
DATE HOLE STARTED <b>Nov. 18, 1973</b>	DATE COMPLETED <b>Nov. 23, 1973</b>	DATE LOGGED <b>Dec 2, 1973</b>	LOGGED BY <b>J. C. Gibson</b>				LOCATION, Twp., Lot, Con. Or Lot. and Long. <b>Echo Tp Lot 2 Con 1</b>	PROPERTY NAME
EXPLORATION CO. OWNER OR OPTIONEE <b>Rayrock Mines Ltd. Goldlund Project</b>		DATE SUBMITTED <b>Feb 22/74</b>	SUBMITTED BY (Signature) <b>J. C. Gibson</b>					

FOOTAGE		ROCK TYPE	DESCRIPTION <small>Colour, grain size, texture, minerals, alteration, etc.</small>	DIP AND PLUNGE	CORE SPECIMEN FOOTAGE	TYPIC SAMPLE NUMBER	SAMPLE FOOTAGE		SAMPLE LENGTH	ASSAYS		
FROM	TO						FROM	TO				
0'	10'	Casing										
10'	33'	Greywacke	Gray, medium - grained									
33'	53'	Schist	Green, fine grained biotite-quartz schist. Foliation 35°	35°								
53'	98'	Greywacke	Grey medium grained									
98'	167'	Schist	Green fine grained chloritic schist. Foliation 35°. Occasional grey, less schistose sections. From 161' calcite quartz-chlorite (pyrite) as weak irregular stringers	35°								
167'			End of Hole									

**DUPLICATE COPY  
POOR QUALITY ORIGINAL  
TO FOLLOW**



THE MINING ACT - MINISTRY OF NATURAL RESOURCES  
DIAMOND DRILLING LOG

Start a new page for every new hole, but fill in top portion of form only on first page for each hole.

FILL IN ON EVERY PAGE

HOLE NO. 35-1 PAGE NO. 1

DRILLING COMPANY N. H. H. S. Ltd.		COLLAR ELEVATION	BEARING OF HOLE FROM TRUE NORTH N10°W	TOTAL FOOTAGE 167'	DIP OF HOLE AT collar -75°	LOCATION OF HOLE IN RELATION TO A FIXED POINT ON THE CLAIM	MAP REFERENCE NO. M 2236	CLAIM NO. 35-1-1
DATE MOLE STARTED Nov 18, 1973	DATE COMPLETED Nov 23, 1973	DATE LOGGED Dec 2, 1973	LOGGED BY J. C. Gibson		ft		LOCATION (Tp., Lot, Con. OR Lat. and Long.) E 1/4 Sec 27 T 20 N R 12 W	
EXPLORATION CO., OWNER OR OPTIONEE N. H. H. S. Ltd. Goldens Project		DATE SUBMITTED Feb 22/74	SUBMITTED BY (Signature) 		ft		PROPERTY NAME	
					ft			
					ft			

FOOTAGE		ROCK TYPE	DESCRIPTION Colour, grain size, texture, minerals, alteration, etc.	PLANAR FEATURE ANGLE	CORE SPECIMEN FOOTAGE*	YOUR SAMPLE NUMBER	SAMPLE FOOTAGE		SAMPLE LENGTH	ASSAYS*	
FROM	TO						FROM	TO			
0'	10'	Concretions									
10'	33'	Argillaceous	Grey medium-grained								
33'	53'	Schist	Green fine-grained biotite-quartz schist. Foliation 35°	35°							
53'	98'	Argillaceous	Grey medium-grained								
98'	167'	Schist	Green fine-grained chloritic schist. Foliation 35°. Occasional grey, less schistose partings. From 161' calcite-quartz schistite (pyrite) as weak irregular stringers	35°							
167'			END OF HOLE								

\* For features such as foliation, bedding, schistosity, measured from the true axis of the core.



THE MINING ACT - DEPARTMENT OF MINES  
ONTARIO  
**DIAMOND DRILLING LOG**

Start a new page for every new hole, but fill in top portion of form only on first page for each hole.

FILL IN ON  
EVERY PAGE

HOLE NO. PAGE NO.

DRILLING COMPANY N. Morissette Ltd		LOCAL ELEVATION	BEARING OF HOLE FROM TABLE MOUNT	TOTAL FOOTAGE	DIP OF HOLE AT COLLAR	LOCATION OF HOLE IN RELATION TO A FIRED POINT ON THE CLAIM	MAP REFERENCE NO.	CLAIM NO.
DATE HOLE STARTED Nov. 23, 1973		DATE COMPLETED Nov. 26, 1973	DATE LOGGED Dec 2, 1973	LOGGED BY J.C. Gibson	"		M2236	ECHO TP. LOT 2 Con 1
EXPLORATION CO. OWNER OR OPTIONEE Rayrock Mines Ltd., Goldlund Project		DATE SUBMITTED Feb 22/74	SUBMITTED BY (Signature) J.C. Gibson		"			
					"			
					"			
PROPERTY NAME								

FOOTAGE FROM TO		ROCK TYPE	DESCRIPTION Colour, grain size, texture, minerals, alteration, etc.	PLANAR FEATURE ANGLE	CORE SPECIMEN FOOTAGE	TOUR SAMPLE NUMBER	SAMPLE FOOTAGE FROM TO		SAMPLE LENGTH	ASSAYS	
0'	10'	Casing									
10'	30'	Greywacke	Grey, medium-grained								
30'	123'	Schist	Green, fine-grained chlorite schist. Foliation at 25° Occasional Grey, less schistose sections with irregular calcite-quartz stringers.	25°							
123'	140'	Greywacke	Grey, medium-grained								
140'	158'	Tuff	Light grey to green								
158'			END OF HOLE								

**DUPLICATE COPY  
FOR QUALITY ORIGINAL  
TO FOLLOW**



THE MINING ACT - MINISTRY OF NATURAL RESOURCES  
**DIAMOND DRILLING LOG**

Start a new page for every new hole, but fill in top portion of form only on first page for each hole.

FILL IN ON EVERY PAGE

HOLE NO. 732-2 PAGE NO. 1

DRILLING COMPANY N. Montpelier Ltd.		COLLAR ELEVATION	BEARING OF HOLE FROM TRUE NORTH N 10° W	TOTAL FOOTAGE 158'	DIP OF HOLE AT COLLAR -55'	LOCATION OF HOLE IN RELATION TO A FIXED POINT ON THE CLAIM 	MAP REFERENCE NO. H 2236	CLAIM NO. 732-2-1
DATE STARTED Nov. 23, 1973	DATE COMPLETED Nov. 24, 1973	DATE LOGGED Dec 2, 1973	LOGGED BY J C Gibson		ft		LOCATION (Twp., Lot, Con. OR Lot. and Long.) ECHO Twp. Lot 2 Con 1	
EXPLORATION CO. OWNER OR OPTIONEE Raymond Stone Ltd. Gardiner Project		DATE SUBMITTED Feb 22/74	SUBMITTED BY (Signature) J C Gibson		ft			
					ft			PROPERTY NAME

FOOTAGE FROM TO		ROCK TYPE	DESCRIPTION Colour, grain size, texture, minerals, alteration, etc.	PLANAR FEATURE ANGLE	CORE SPECIMEN FOOTAGE	YOUR SAMPLE NUMBER	SAMPLE FOOTAGE FROM TO		SAMPLE LENGTH	ASSAYS
0'	10'	Casing								
10'	30'	Greyswacke	Grey, medium-grained							
30'	123'	Schist	Green, fine-grained calcitic schist. Foliation on 25° Occasional grey, less calcitic, sections with irregular calcite-quartz veins	25°						
23'	140'	Greyswacke	Grey, medium-grained							
140'	158'	Tuff	Light grey to green							
158'			END OF HOLE							



THE MINING ACT - DEPARTMENT OF MINES  
DIAMOND DRILLING LOG

Start a new page for every new hole, but fill in top portion of form only on first page for each hole.

FILL IN ON EVERY PAGE

HOLE NO.	PAGE NO.
----------	----------

DRILLING COMPANY N. Morissette Ltd.		LOCATION	DEVIATION FROM TRUE NORTH N20°W	TOTAL FOOTAGE	DIP OF HOLE AT collar -55	RELATION OF HOLE IN RELATION TO A FIXED POINT ON THE CLAIM	MAP REFERENCE NO. M 2250	PLANNING NO. 35804
DATE HOLE STARTED Nov 26, 1973	DATE COMPLETED Nov. 26, 1973	DATE LOGGED Dec. 2, 1973	LOGGED BY J. C. Gibson		"	ECHO TP LOT 2 Can 1	PROPERTY NAME	
EXPLORATION CO. OWNER OR OPTIONEE Rayrack Mines Ltd., Goldlund Project		DATE SUBMITTED Feb 22/74	SUBMITTED BY (signature) J. C. Gibson		"			

FOOTAGE FROM TO		ROCK TYPE	DESCRIPTION Colour, grain size, texture, minerals, alteration, etc.	PLANNED FEATURE SCALE	CODE SPECIMEN FOOTAGE	YOUR SAMPLE NUMBER	SAMPLE FOOTAGE FROM TO		SAMPLE LENGTH	ASSAYS
0'	12'	Casing								
12'	34.5'	Greywacke	Grey to green, medium-grained, numerous irregular calcite-quartz stringers.							
34.5'	36'	Schist	Green, fine grained chloritic schist. Foliation 45°.	45°						
36'			END OF HOLE							

DUPLICATE COPY  
POOR QUALITY ORIGINAL  
TO FOLLOW



THE MINING ACT - MINISTRY OF NATURAL RESOURCES  
DIAMOND DRILLING LOG

Start a new page for every new hole, but fill in top portion of form only on first page for each hole.

FILL IN ON EVERY PAGE

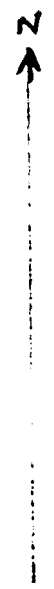
HOLE NO. 1032  
PAGE NO. 1

DRILLING COMPANY S. J. ...		COLLAR ELEVATION	BEARING OF HOLE FROM TRUE NORTH	TOTAL FOOTAGE	DIP OF HOLE AT COLLAR	LOCATION OF HOLE IN RELATION TO A FIXED POINT ON THE CLAIM	MAP REFERENCE NO.	CLAIM NO.	
DATE HOLE STARTED	DATE COMPLETED	DATE LOGGED	LOGGED BY				LOCATION (T.P., Lat. Con. OR Lat. and Long.)		
EXPLORATION CO. OWNER OR OPTIONEE		DATE SUBMITTED	SUBMITTED BY (Signature)				PROPERTY NAME		

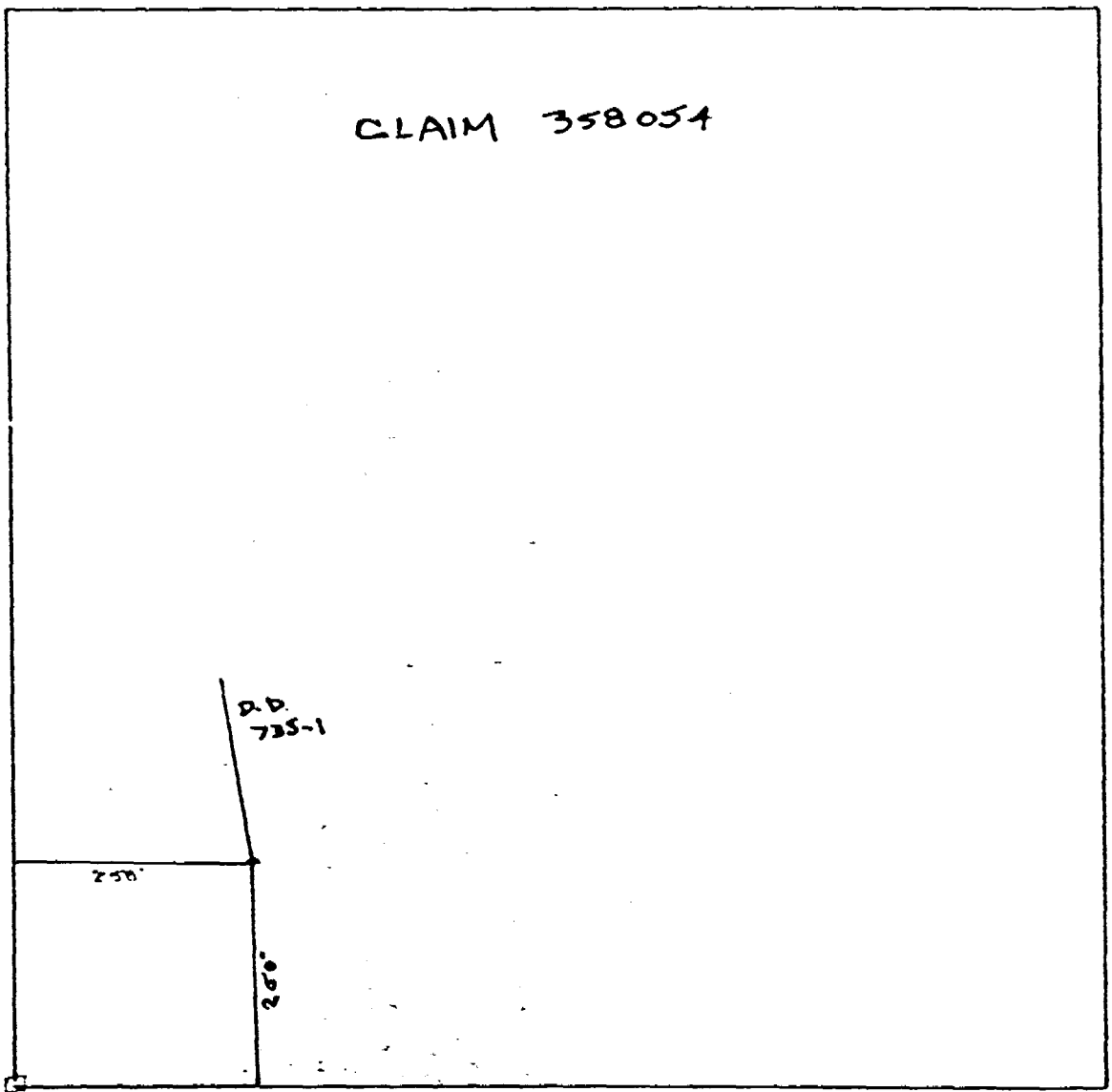
FOOTAGE		ROCK TYPE	DESCRIPTION Colour, grain size, texture, minerals, alteration, etc.	PLANNED FEATURE ANGLE *	CORE SPECIMEN FOOTAGE †	YOUR SAMPLE NUMBER	SAMPLE FOOTAGE		SAMPLE LENGTH	ASSAYS †
FROM	TO						FROM	TO		
0	12	Sanding								
12	34.5	Green schist	Green to greenish grey schist, calcite veins, siliceous							
34.5	36	Schist	Green schist, calcite veins, siliceous	45°						
36			END OF HOLE							

\* For features such as foliation, bedding, schistosity, measured from the long axis of the core.

† Additional credit available. See Assessment Work Regulations.



CLAIM 358054

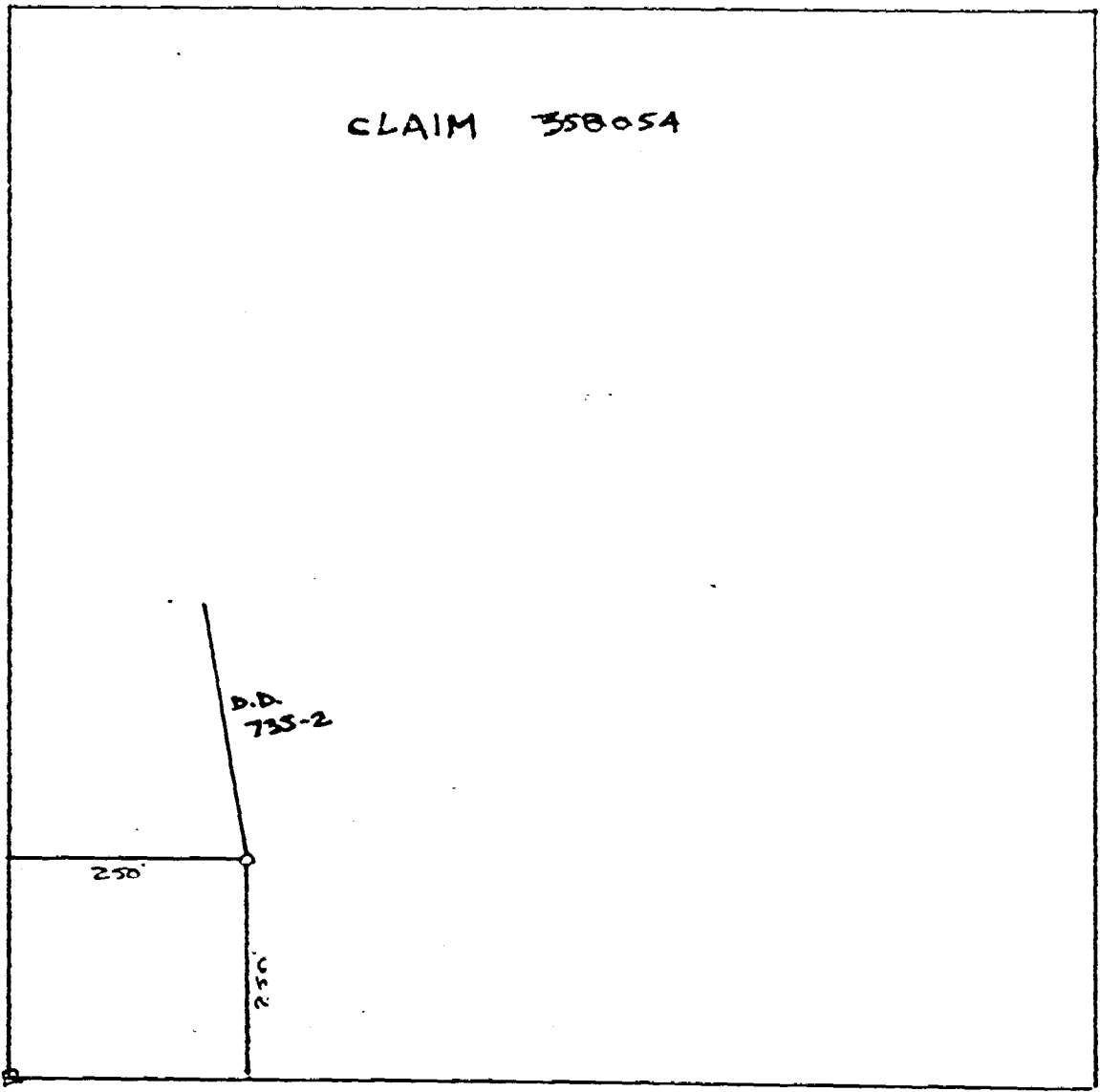


#3  
Post





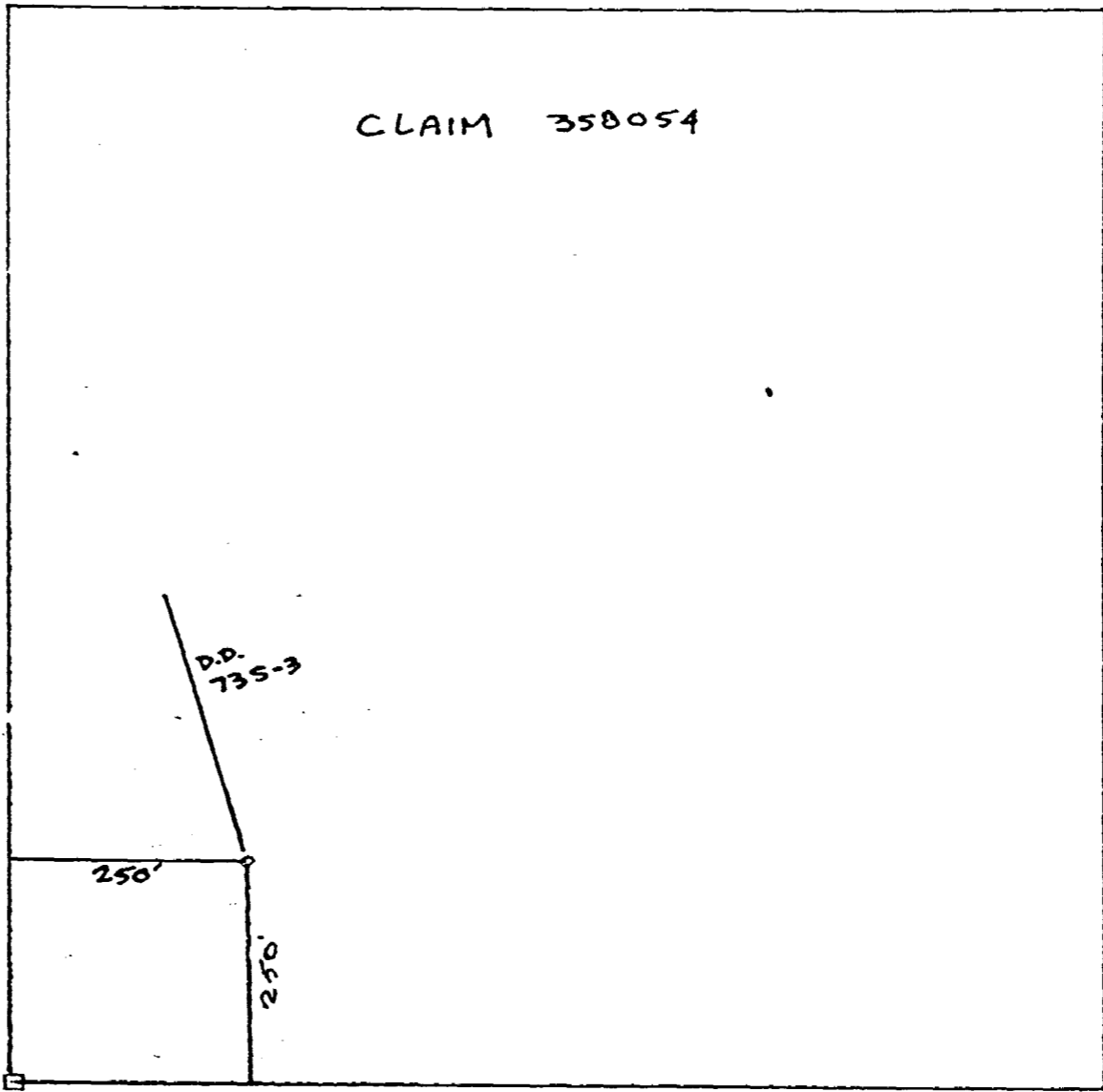
CLAIM 358054



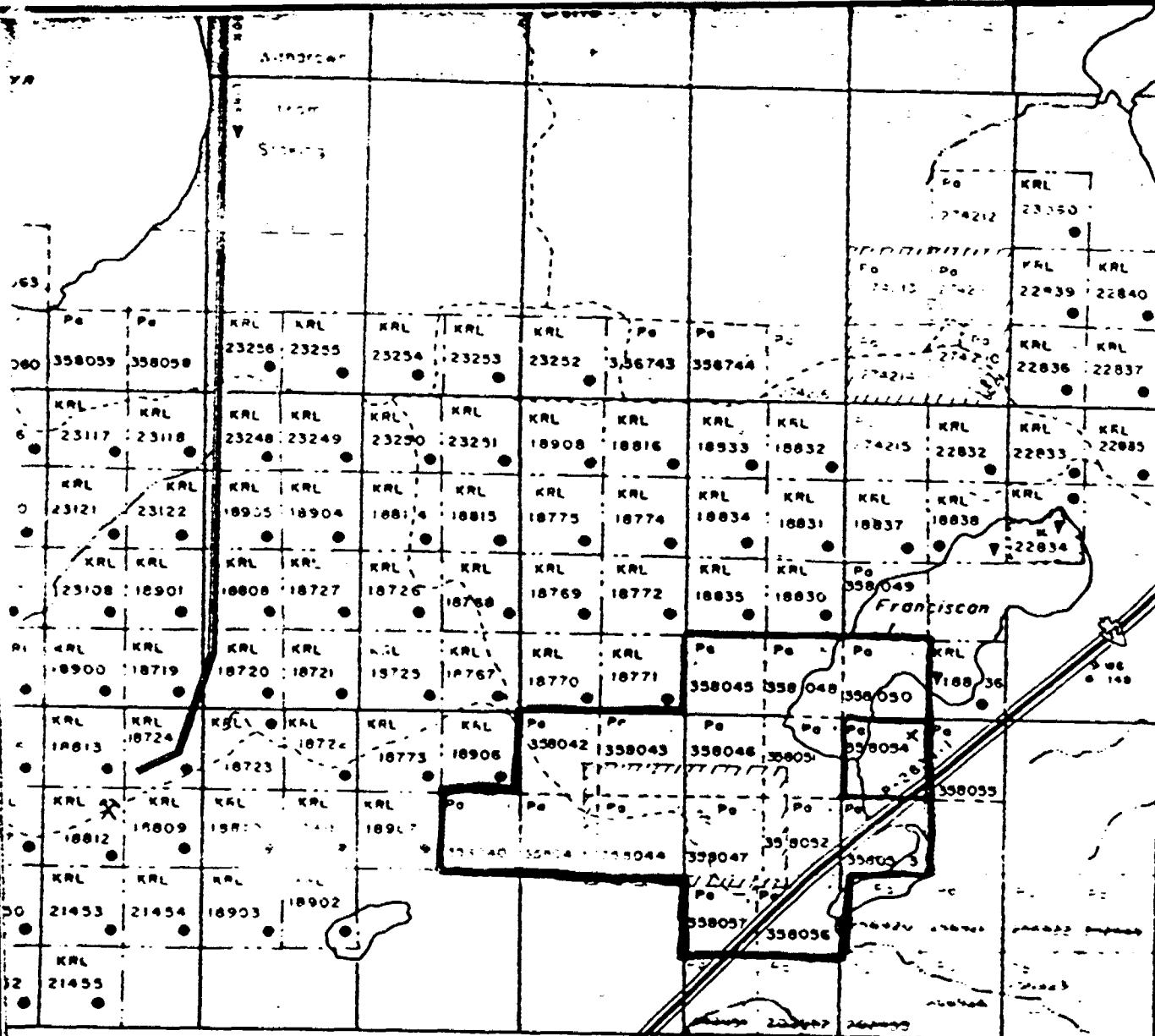
Post



CLAIM 358054



#3  
Post



PICKEREL Tp.

7 6 5 4 3 2 1

CAREE Tp. M. 2254

ECHO Twp. M. 2236

Scale  
1" = 40 chs.

M  
DATE  
α

52F15NW080 52F15NW013D1 ECHO



900