



52F16NW8397 10 KABIK LAKE

010

AREA OF KABIK LAKE REPORT #10

This file contains work performed by El Pen Rey Mines on claim:

PA.10145

Hole #P.R.1;

July, 1950

<u>PA.10145</u>	<u>Hole #</u>	<u>Footage</u>	<u>Date</u>
	1	641.0	July, 1950
	<u>LDH</u>	<u>641.0'</u>	

CHAMBERLIN MANAGEMENT CORP., LTD.—PROPERTY

EL PEN REY MINES LTD. Pickering twp., Ontario

DIPS: COLLAR 0°-35°

EXPLORATION DIAMOND DRILL RECORD

BEARING N 40 W ELEVATION _____

DATE BEGUN July 31 DATE FINISHED Aug. 6
1950 1950

Locations- 1

Claim Pa. 10145, 450 ft.

SECTION east, 80 ft. south,
approximately, from

LATITUDE N.M. corner.

DEPARTURE _____

HOLE NO. P.R. 1

SHEET NO. 1

DEPTH 61 ft.

N&S LTD

CORE FOOTAGE		DESCRIPTION		REMARKS	SAMPLE		OUNCES GOLD	VALUE \$38.00/OZ	AVERAGE
FROM	TO	ROCK	COLOUR		NUMBER	FEET			
0	7			Casing					
7	25.2	porphyritic pyroclastic breccia ?		appears to be fragmental rock of porphyritic appearance; rather acidic, but generally somewhat carbonated; contacts about 45° to core (steep north dips); generally weakly sheared; local pyrite streaks and oxidation.					
25.2	41.6	Iron Formation		locally banded rock, mainly quartz, with some altered wall rock; locally heavy pyrite, pyrrhotite, magnetite					
41.6	46.6	Iron Formation		more quartz and more coarse pyrite	4549	5.0	N11		
46.6	51.7	" "		" " " " " "	4550	5.1	N11		
51.7	56.7	" "		" " " " " "	4551	5.0	N11		
56.7-	66.6	" "		as above					

CHAMBERLIN MANAGEMENT CORP., LTD.—PROPERTY EL PEN REY MINES LTD. Pickeral Twp.

SECTION _____

HOLE NO. P.E. 1

DIPS: COLLAR _____

EXPLORATION DIAMOND DRILL RECORD

LATITUDE _____

SHEET NO. 2

BEARING _____ ELEVATION _____

DATE BEGUN _____ DATE FINISHED _____

DEPARTURE _____

DEPTH _____

788 LTD

CORE FOOTAGE		DESCRIPTION		REMARKS	SAMPLE		OUNCES GOLD	VALUE \$38.00/OZ	AVERAGE
FROM	TO	ROCK	COLOUR		NUMBER	FEET			
66.6	71.6	Iron Formation	as above		4552	5.0	Tr.		
71.6	76.6	" "	" "		4553	5.0	Tr.		
76.6	81.6	Iron Formation	as above		4554	5.0	Tr.		
81.6	86.6	" "	" "		4555	5.0	M1		
86.6	92	Iron Formation	as above		4556	5.4	M1		
92	98.2	" "	" "		4557	6.2	M1		
98.2	106	agglomerate		acid agglomerate mainly; probably iron formation to 102 feet; local pyrite streaks and clusters					
106	113	Iron Formation ?		mixed quartz, wall rock altered, local pyrite, pyrrhotite, magnetite; some broken ground and lost core.					
113	134.7	agglomerate and iron formation		probably agglomerate, locally highly silicified, with some iron formation; local heavy pyrite and pyrrhotite; some pyrite coarse lost cores:- 114.4-115; 116-118					
134.7	272	pyroclastic breccias ?		anduffs? locally porphyritic, possible intrusive, and porphyritized; some ?					

CHAMBERLIN MANAGEMENT CORP., LTD.—PROPERTY EL. PEN REY MINES LTD., Pickeral Twp.

SECTION _____

HOLE NO. P.R. 1

DIPS: COLLAR _____

EXPLORATION DIAMOND DRILL RECORD

LATITUDE _____

SHEET NO. 3

BEARING _____ ELEVATION _____

DATE BEGUN _____ DATE FINISHED _____

DEPARTURE _____

DEPTH _____

N&S LTD

CORE FOOTAGE		DESCRIPTION		REMARKS	SAMPLE		OUNCES GOLD	VALUE \$35.00/OZ.	AVERAGE
FROM	TO	ROCK	COLOUR		NUMBER	FEET			
134.7	272			siliceous and silicified sections, but mainly rather basic and locally chloritized; contacts and bedding about 45° to core; locally sheared; local pyrite; quartz fillings 169.1-169.5 and 188-188.7; becoming broken, some last core, from 185; more dominantly acidic from about 196.					
272	273.8	quartz & pyroclastic		6" quartz vein, balance porphyritic pyroclastic breccia; rather carbonated, chloritic, micaceous, sheared, same quartz fillings; local pyrite.	4558	1-8	Nil		
273.8	317.4	pyroclastic breccia		tuffs; and some intrusive porphyry; porphyritic and porphyritized locally.					
317.4	349	quartz feldspar porphyry		- probable intrusive, but could be in part porphyritic pyroclastics with intrusive sections.					

CHAMBERLIN MANAGEMENT CORP., LTD.—PROPERTY KL PER REY MINES LTD. Pickeral Twp.

SECTION _____

HOLE NO. P.R. 1

DIPS: COLLAR _____

EXPLORATION DIAMOND DRILL RECORD

LATITUDE _____

SHEET NO. 4

BEARING _____ ELEVATION _____

DATE BEGUN _____ DATE FINISHED _____

DEPARTURE _____

DEPTH _____

NAG LTD

CORE FOOTAGE		DESCRIPTION		REMARKS	SAMPLE		OUNCES GOLD	VALUE \$35.00/OZ	AVERAGE
FROM	TO	ROCK	COLOUR		NUMBER	FEET			
349	350.4	Tuffs?		weakly sheared and somewhat chloritized; few pyrite stringers, some disseminated, and few quartz stringers.	4559	1.4	Nil		
350.4-	357.8	Tuffs?		rather basic, somewhat chloritized; weakly sheared; local minor quartz fillings.					
357.8	373.7	pyroclastic breccia ?		may be mainly feldspar and quartz porphyry intrusive with some porphyritic pyroclastic.					
373.7	374.7	quartz		mainly; some altered rock; fair pyrite	4560	1.0	Nil		
374.7	383.7	dacite ?		possible medium basic flow or intrusive; fairly even f.g. texture, no bedding or fragments; local quartz eyes					
383.7	386.9	acid dike ?		-or acid fragmental; sharp contacts about 60° to core; quartz stringer with coarse pyrite at 384					

CHAMBERLIN MANAGEMENT CORP., LTD.—PROPERTY EL PIN REY MINES LTD. Pickeral Twp.

SECTION _____

HOLE NO. P.R. 1

DIPS: COLLAR _____

EXPLORATION DIAMOND DRILL RECORD

LATITUDE _____

SHEET No. 5

BEARING _____ ELEVATION _____

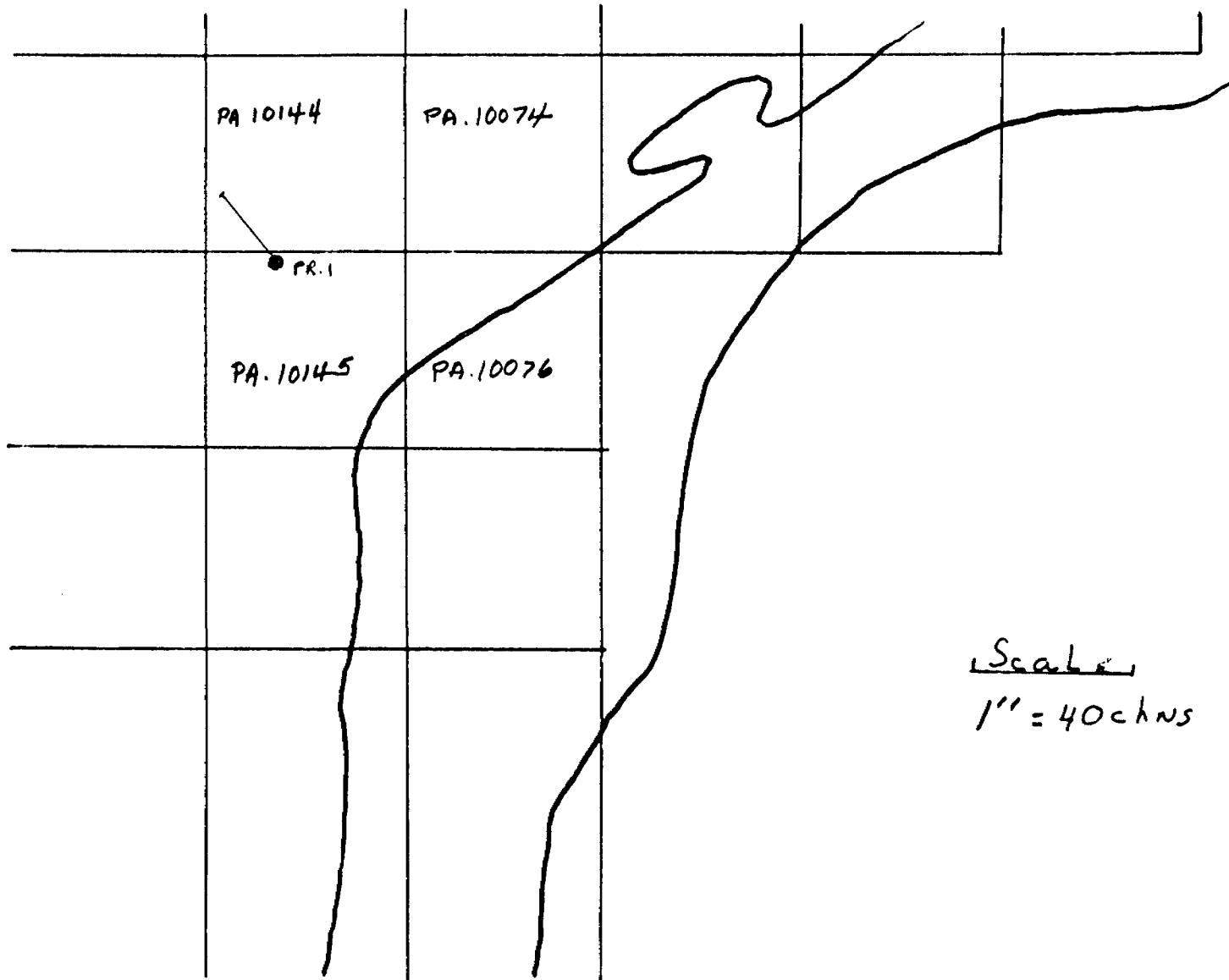
DATE BEGUN _____ DATE FINISHED _____

DEPARTURE _____

DEPTH _____

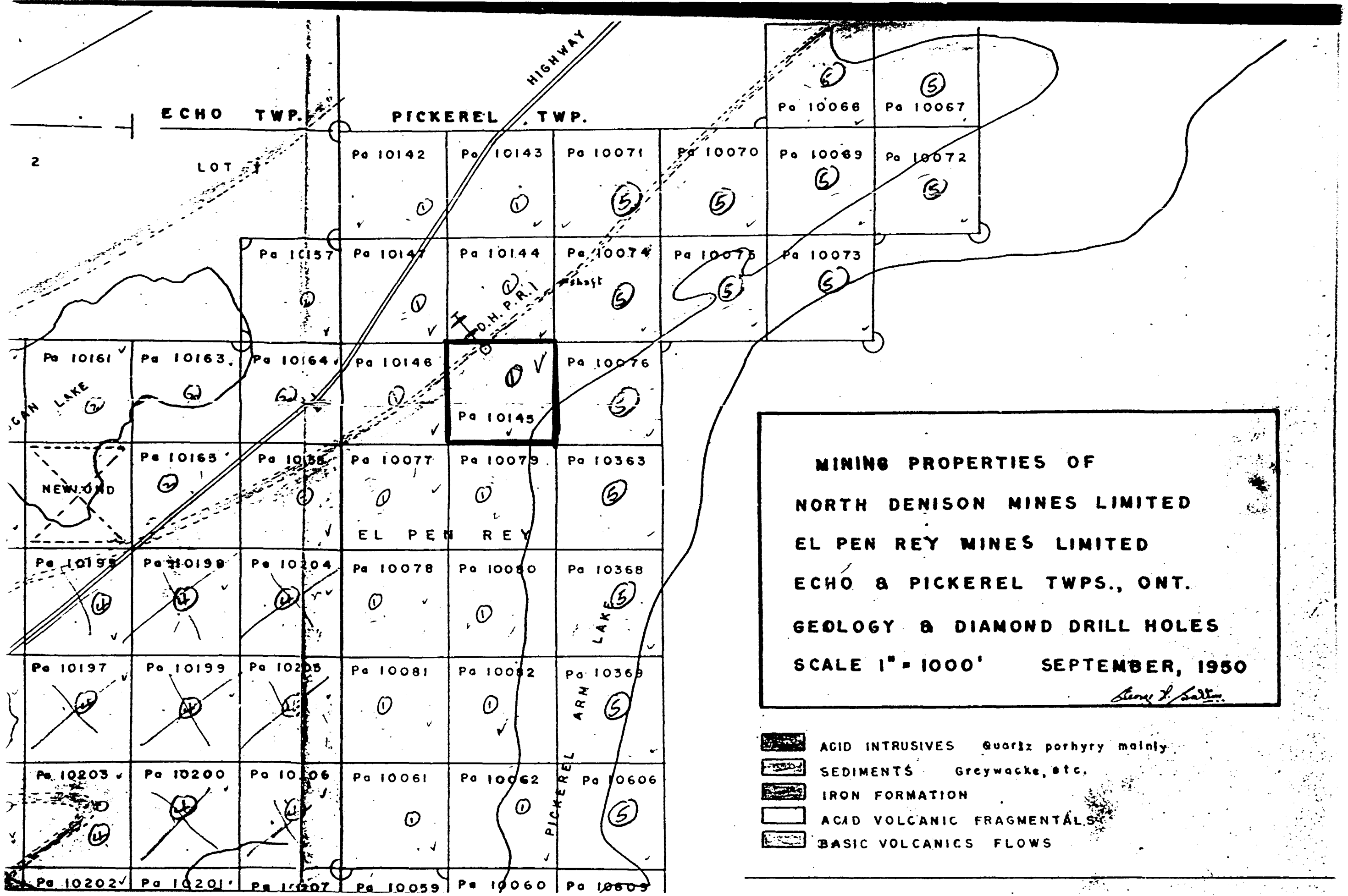
N&S LTD

CORE FOOTAGE		DESCRIPTION		REMARKS	SAMPLE		OUNCES GOLD	VALUE \$35.00/OZ.	AVERAGE
FROM	TO	ROCK	COLOUR		NUMBER	FEET			
386.9	394.1	quartz porphyry ?		or dacite; intrusive or flow; quartz eyes; local heavy pyrite 389-390.5					
394.1	396.3	quartz porphyry ?		or dacite; local heavy pyrite; minor quartz	4561	2.2	Nil		
396.3	404.3	quartz porphyry ?		or dacite; local heavy pyrite;					
404.3	531	pyroclastic breccias ?		and tuffs ? acidic; may include some intrusive material, porphyritic; very local pyrite and occasional quartz stringer; several lost core sections to 482 feet.					
531	569	feldspar porphyry ?		possible intrusive porphyry; local large quartz eyes and numerous phenocrysts or fragments; could be pyroclastic; fairly massive; local pyrite					
569	641	pyroclastic breccias		agglomerates, tuffs; acidic; locally porphyritic; rather altered, weakly sheared; generally broken and several lost core sections; minor local pyrite					
				END — 641					



Scale

1" = 40 chns



MINING PROPERTIES OF
NORTH DENISON MINES LIMITED
EL PEN REY MINES LIMITED
ECHO & PICKEREL TWPS., ONT.
GEOLOGY & DIAMOND DRILL HOLES
SCALE 1" = 1000' SEPTEMBER, 1950
Henry J. Patton

- ACID INTRUSIVES Quartz porphyry mainly
- SEDIMENTS Greywacke, etc.
- IRON FORMATION
- ACID VOLCANIC FRAGMENTALS
- BASIC VOLCANICS FLOWS