



52F16NW8425 52F16NW0027A1 ECHO

010

Diamond Drilling

Township ECHO

Report NO: 10

Work performed by: CONECHO MINES

Claim NO	Hole NO	Footage	Date	Note
KRL 23017 23107	1	792'	May/50	
KRL 23119	3	792'	June/50	
	<u>2DH</u>	<u>1584'</u>		

Notes:

Property

Conecche Mines

9-1-21

Hole Number

1

DIAMOND DRILL RECORD

Sheet Number

1

Section From

To

Location:

Lat.

1180 N.

Dep.

1510 E.

Elevation of Collar

Datum

Direction at Start:

Bearing

N. 37° 30' W.

Dip

45° N.E.

Started

May 22nd

Completed

May 31st

Ultimate Depth

792

Proposed Depth

Depth Feet	FORMATION	Sample No	Width of Sample	Gold \$	Sludge Gold \$
0'-111'	Overburden: 0' to 55' clay; 55' to 108' quick sand; 108' to 111', gravel and quick sand.				
111'-274'	Spherulitic Lenses: 111' to 150', fine grain, fairly acid, grey to light green with some alt. occurred, mal gtz. str. up to one inch in width; where altered, nodules are partially or fully replaced with py. and tourmaline.				
	128'-123-4': reddish feldspathic alt.				
	136'-141': highly altered spherulitic lenses; fine close, mottled py.; tiny blue gtz. str. fairly well run.	31	5.0	Nil	
	141'-144': alt. spherulitic lenses; two 1/2 inch gtz. str.; some scattered py. as replacement in nodules.	27	3.0	Tr.	
	144'-146.5': slightly altered lenses; one 1/2 inch str.; some fine disseminated py.	32	2.5	Nil	

A. T. Leitch

Canadian Tourmaline

Property

Conecho Mines

DIAMOND DRILL RECORD

Hole Number

1

Sheet Number

2

Section From

To

Location:

Lat.

1180 N.

Dep.

1410 E.

Elevation of Collar

Datum

Direction at Start:

Bearing

N 95° 30' W.

Dip

45 deg

Started

May 22^d

Completed

May 31st

Ultimate Depth

792

Proposed Depth

Depth Feet	FORMATION	Sample No.	Width of Sample	Gold \$	Sludge Gold \$
	150'-198': Laras are fine grained but slightly darker in colour with occasional g.t. st. and Sulphides.				
	198'-248': Laras darker green and slightly coarser grained.				
	251'-272': highly silicified two feet barren g.t.				
	250.4'-252.9': highly silicified Laras, fairly well mm. with fine py. and pyr.; occasional 1/4 inch g.t. st.; fine silicification; py. size up to 1/8 inch	28	2.5	0.04	
	271.3'-273.9': Same as #28 - one inch flat st.	29	2.6	Nil	
279'-309'	Fine grained endoites and tuffs, with scattered fine py. throughout; tuff 2. from 290.6' to 295'-magnetic				

Signed

D. H. G. 9/20

Drilled by

Canadian Tourneau

Property

Conecho Mines

DIAMOND DRILL RECORD

Hole Number

1

Sheet Number

3

Section From

To

Location:

Lat.

1180 N.

Dep.

1910 E.

Elevation of Collar

Datum

Direction at Start:

Bearing

N 23° 30' W

Dip

45° dy.

Started

May 22^d

Completed

May 31st

Ultimate Depth

792

Proposed Depth

Depth Feet	FORMATION	Sample No.	Width of Sample	Gold \$	Sludge Gold \$
	303.8'-306.2': Silicified dark laves; no ink irregular st. with $\frac{3}{4}$ inch cube of py. at 304'- '2 inch st. with fair amount of chalcopyrite in fairly coarsed py. at 305.4'- little disseminated py. and chalcopyrite in balance.	30	24	trace	
309-315	Very coarse grained with much iron, Hemid. - possible basic dyke - scattered fine py. and occasional thread of pyrrhotite - magnetite				
315-322	medium grained andesites - sulphide as above - magnetite.				
322-331.6	322'-331.6': dyke as at 309'. 329'-325': possible fault zone - dyke rotten and apparent water erosion - fair amount of disseminated sulphide - magnetite.				
331.6-355.4	331.6'-355.4': fine grained andesites and tuffs - magnetite.				

Signed

J. S. Gault

Drilled by

Canadian Engineer

Property Cosecho Mines

Hole Number 1

DIAMOND DRILL RECORD

Sheet Number 4

Section From To

Location: Lat. 11 50 N.
 Dep. 14 10 E.

Started May 22 21

Elevation of Collar

Completed May 31 21

Datum

Ultimate Depth 792

Direction at Start: Bearing N 23° 30' W.
 Dip 95 deg.

Proposed Depth

Depth Feet	FORMATION	Sample No	Width of Sample	Gold \$	Sludge Gold \$
	334'-336': tuff, slightly fractured and alt. - 3 inches of g.t. at 335.5. with little py. at walls - at 342' slightly greenish (a. plate) alt.				
355.4'-364'	fairly light colored hornblende - diorite dyke - sil. with fine sh. - py. and fair magnetite.				
364'-434'	Fine grained tuff, or andesites - magnetite min. with py. and f. py. or threads. - at 380' two inches g.t. etc. with py. - Porphyry highly mica. lenses, becoming darker at 434'.				
434'-454'	Very dark coarse grained dyke with g.t. carrying fair amount of disseminated py. and f. py. - High percentage of silica				
454'-465'	Fine grained highly chloritic andesites - thread of py. or f. py.				
465'-471'	Basalt dyke disseminated of threads of py. and f. py. - probably grain of sphalerite.				

Signed S. H. G. et al.

Drilled by Canadian Tourneau

Property 124.1110 P.M.S.Hole Number 1

DIAMOND DRILL RECORD

Sheet Number 6

Section From To

Location: Lat. 1180 N.Dep. 1910 E.Started May 22^d

Elevation of Collar

Completed May 31st

Datum

Ultimate Depth 792Direction at Start: Bearing N. 33° 20' W.Dip 95 deg.

Proposed Depth

Depth Feet	FORMATION	Sample No	Width of Sample	Gold \$	Sludge Gold \$
536.5'-569'	560 to 519': possible a diorite - extremely highly alt. and somewhat so that very little if any of original constituents remain.				
	To 557' alt. red and quite sil. - From 557' alt. sericite and occasional small $zr.$ st.				
569'-571'	qtz. feldspar porphyry highly altered.				
571'-584.5'	diorite highly sericitized and sheared. - Occas. sericite - $zr.$ st.				
584.5'-598.5'	qtz. feldspar porphyry highly altered.				
598.5'-615.5'	a. diorite highly altered - Vans. of red alteration - possible carbonates or sulphides leached from rock and from 600' or very probably major fault structure.				
615.5'-623.5'	qtz. feldspar porphyry or possibly feldspar porphyry, sheared and altered.				

Signed DohertyDrilled by Canadian Longyear

Property

Concecho Mines

DIAMOND DRILL RECORD

Hole Number

1

Sheet Number

7

Section From

To

Location:

Lat.

1180 N.

Dep.

1910 E.

Elevation of Collar

Datum

Direction at Start:

Bearing

N 23° 25' W.

Dip

75 deg.

Started

May 22^d

Completed

May 31st

Ultimate Depth

792

Proposed Depth

Depth Feet	FORMATION	Sample No	Weight of Sample	Gold \$	Sludge Gold \$
623.5-792'	Andesite highly altered but with alt. less pronounced lines 696' on - from 640' to 715' reddish brown alt. phase.				
	715' - 739': alt. section.				
	739' - 768': Varying degrees of alt.				
	768' - end of hole: alt. section with some fracturing and shearing.				
	End of Hole 792 FT.				

Signed

J. L. ...

Signed by

Canadian ...

Property Conecho Mines

9-1-22

Hole Number 3

DIAMOND DRILL RECORD

Sheet Number 1

Section From To

Location: Lat. N-2568
Dep. S-19435Started June 12th

Elevation of Collar

Completed June 8th

Datum

Ultimate Depth 834Direction at Start: Bearing N-21°30' W.

Proposed Depth

Dip 45 deg.

Depth Feet	FORMATION	Sample No	Width of Sample	Gold \$	Sludge Gold \$
0'-44'	Casing - Sand.				
44'-48.5'	Highly sericitized schist.				
48.5'-52.5'	Sheared micaceous tuffs - carb. - str. slightly magnetic - possible iron formation.				
52.5'-56'	Highly sericitized schist.				
56'-62.1'	Sheared micaceous tuffs				
62.1'-68.4'	qtz. feldspar - two inches qtz., no min at 62.1.				
68.4'-148.5'	Intertidated tuffs and dark fine grained greenstone string threads of pyrr. along bedding, and shear planes. - from 108 m. greenstone, little coarsened grained - occasional string qtz. carb. str.				
148.5'-153.5'	Grey green medium grained gneodiorite dyke.				

Signed

D. L. Huggitt

Drilled by

Canadian Truyear

Property Conecho MinesHole Number 3

DIAMOND DRILL RECORD

Sheet Number 2

Section From To

Location: Lat. N-2558
 Dep. E-1143.5
 Elevation of Collar
 Datum
 Direction at Start: Bearing N-21°30' W.
 Dip 45 deg.

Started June 13th
 Completed June 8th
 Ultimate Depth 339
 Proposed Depth

Depth Feet	FORMATION	Sample No	Width of Sample	Gold \$	Sledge Gold \$
153.5'-171'	Fine grained andesites (ANDESITES)				
171'-177.5'	Basic dyke medium grained, slightly magnetic-				
177.5'-242'	Interbedded tuffs and fine grained andesites - occas, small barrened qtz str.				
242'-282'	Diorite, fairly coarse grained - or possibly coarse flow phase.				
282'-288.3'	Tuffs				
288.3'-294'	Feldspar porphyry light grey				
294'-369'	Andesites fine grained with occasional narrow tuff At 325' three inches qtz str. - little pyrite				
	333'-342': Occasional yellow green alt.				

Signed

V. J. ...

Drilled by

Canadian ...

Property Conecho Mines

DIAMOND DRILL RECORD

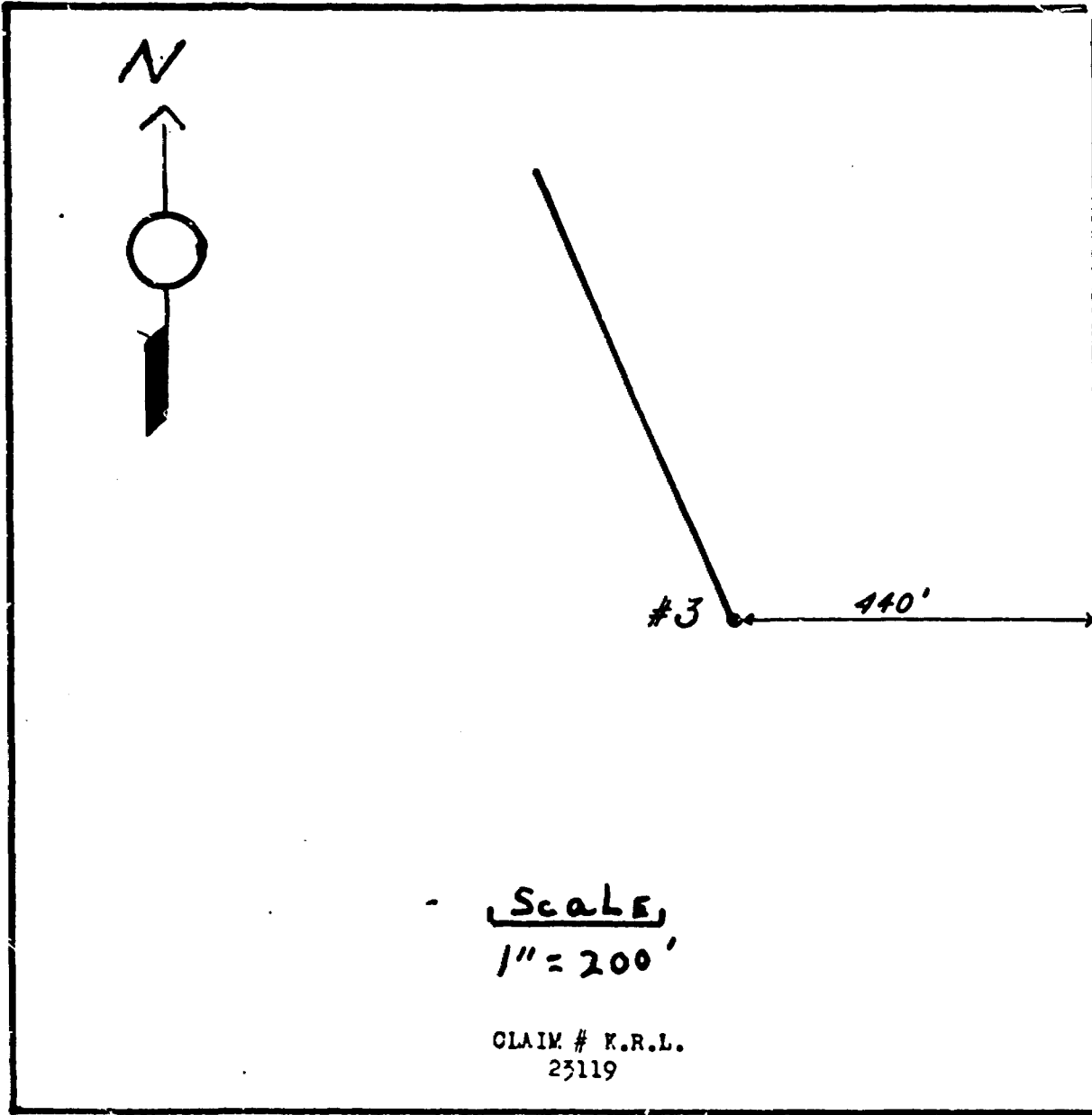
Hole Number 8
 Sheet Number 3
 Section From _____ To _____

Location: Lat. N-2568
 Dep. E-19935
 Elevation of Collar _____
 Datum _____
 Direction at Start: Bearing N-21030' W.
 Dip 25 deg.

Started June 1st
 Completed June 8th
 Ultimate Depth 834
 Proposed Depth _____

Depth Feet	FORMATION	Sample No	Width of Sample	Gold \$	Sludge Gold \$
369'-375'	Light grey tuff and somewhat porphyritic -				
375'-394.5'	Andesite, - occasional laminated gty. str.				
394.5'-418'	Int. bedded tuffs and iron formations - The latter ranging from 2' to 5' and containing occasional small iron mineralized tiny gty. str.				
418'-550'	Tuffs - at 510' s. str., little pyri. and chalcoprite at margin At 546', iron nodules of gty. mineral as above.				
550'-834	Fine to medium grained andesites				
End of Hole 834					

Signed D. Ch...

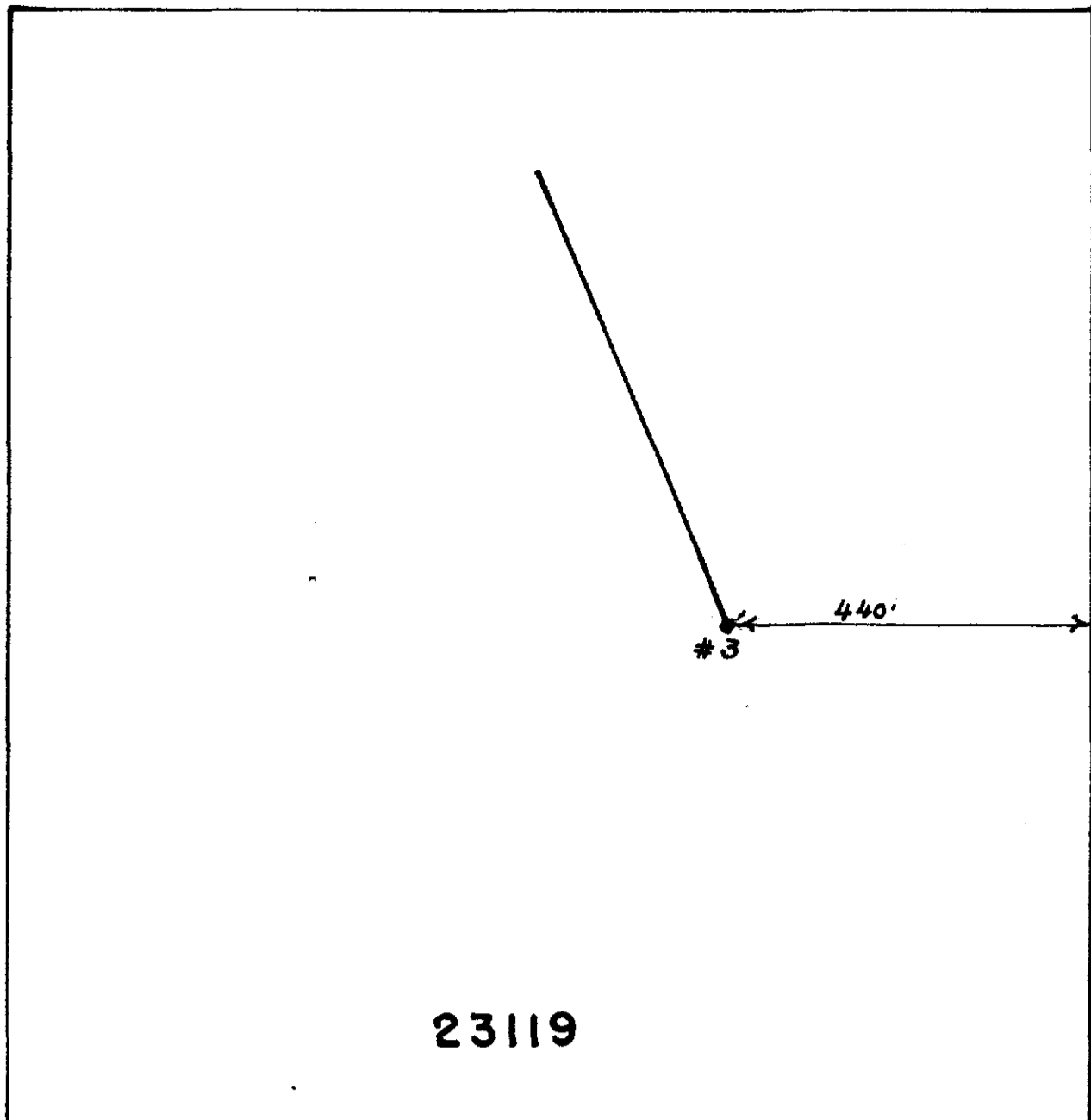
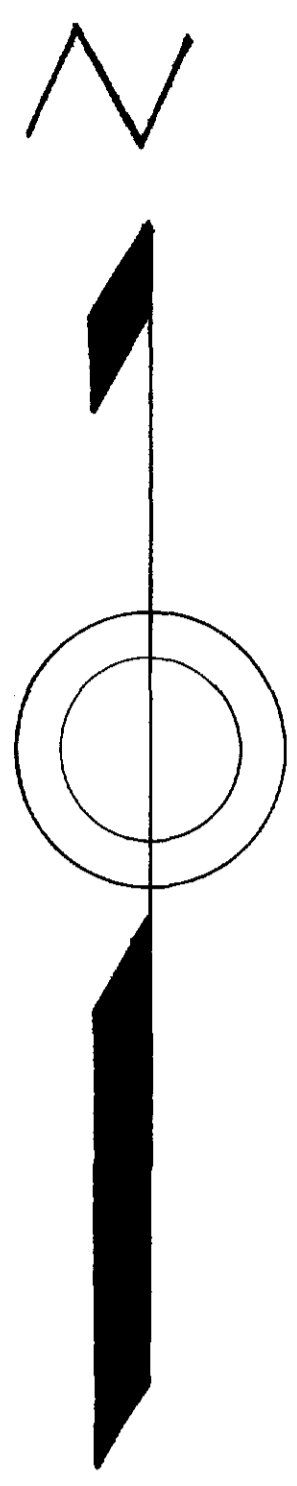


CONECHO MINES LIMITED

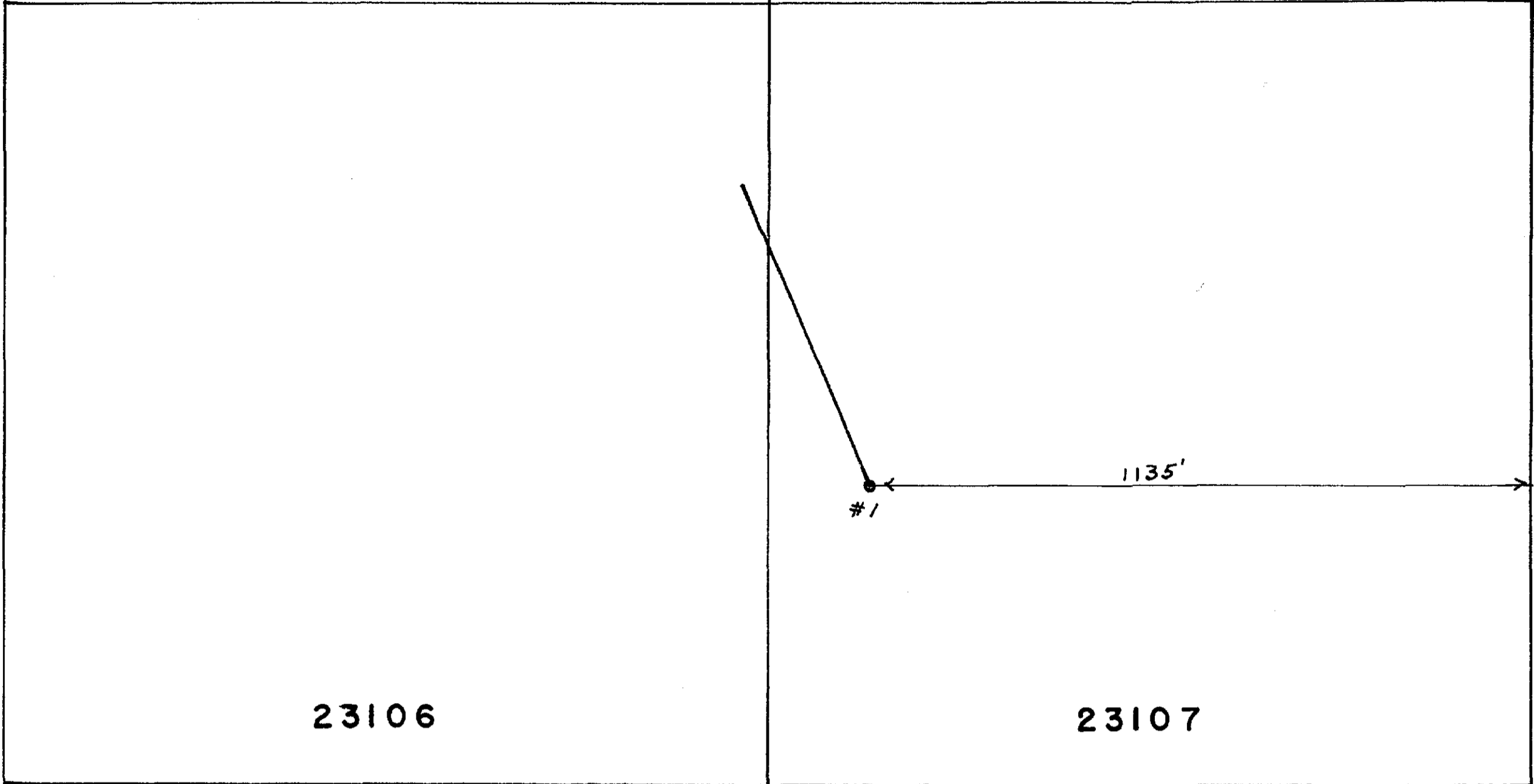
PLAN SHOWING LOCATION OF DIAMOND DRILL HOLE.

June 26th, 1950

June 26-1950 D. P. [Signature]

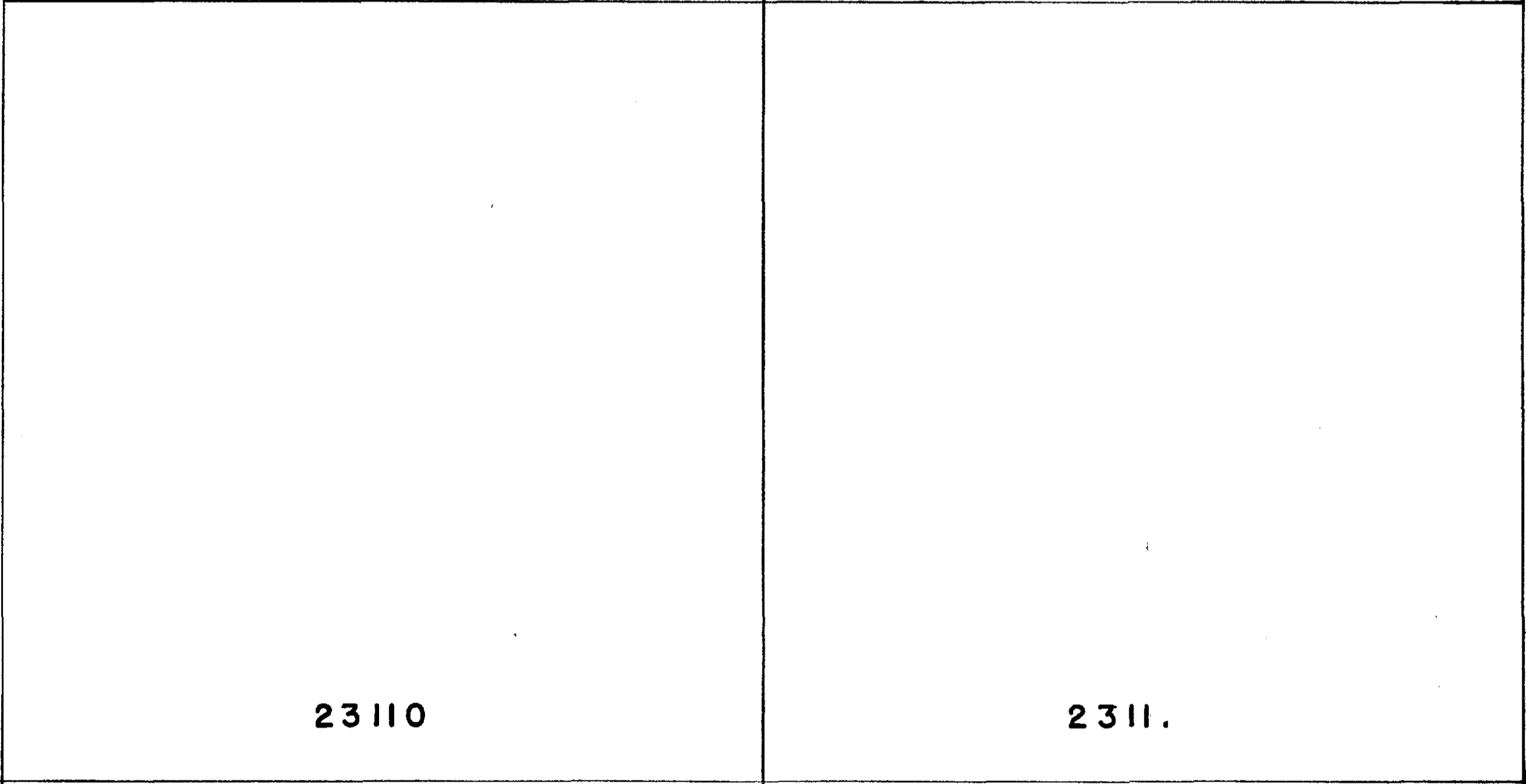


23119



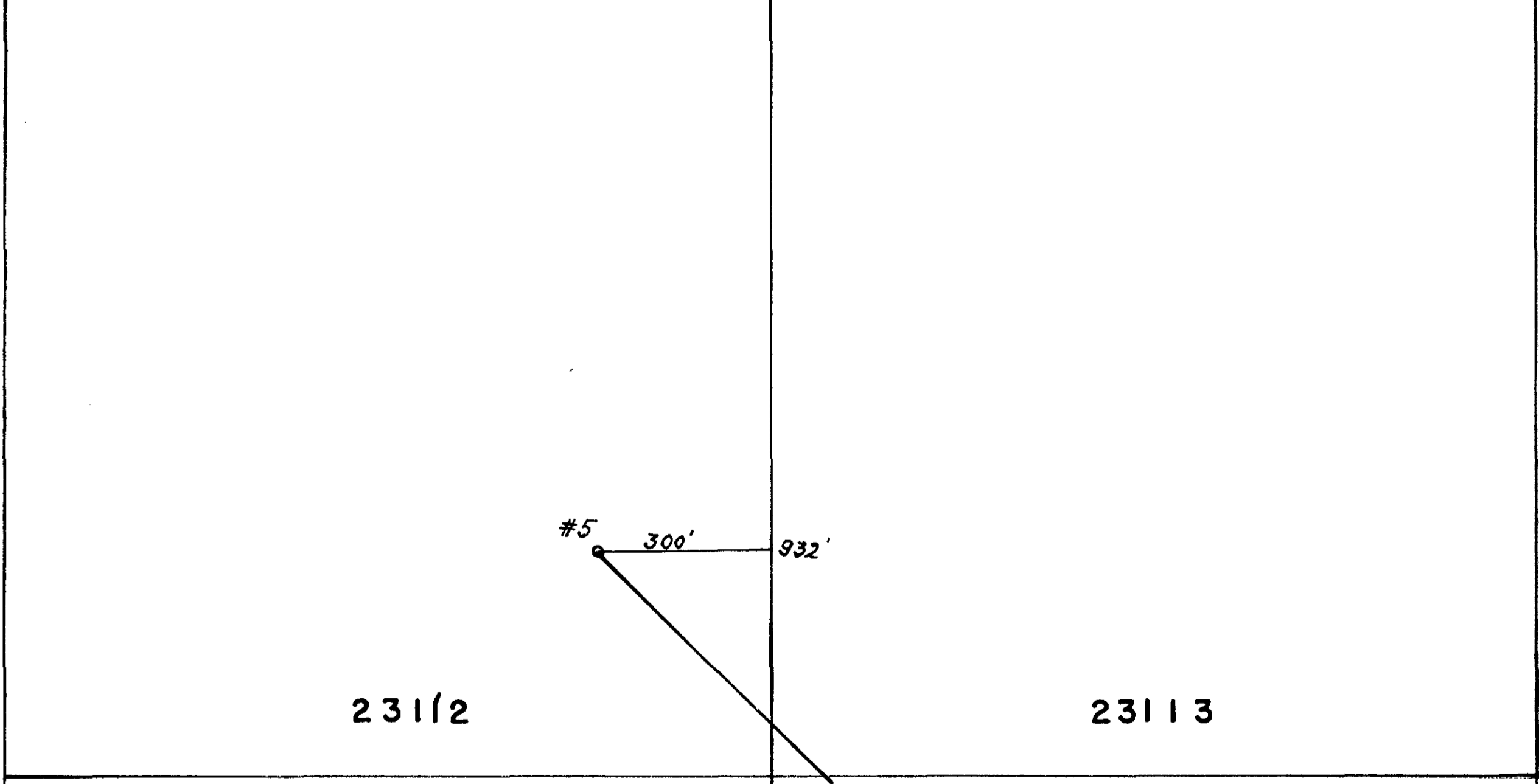
23106

23107



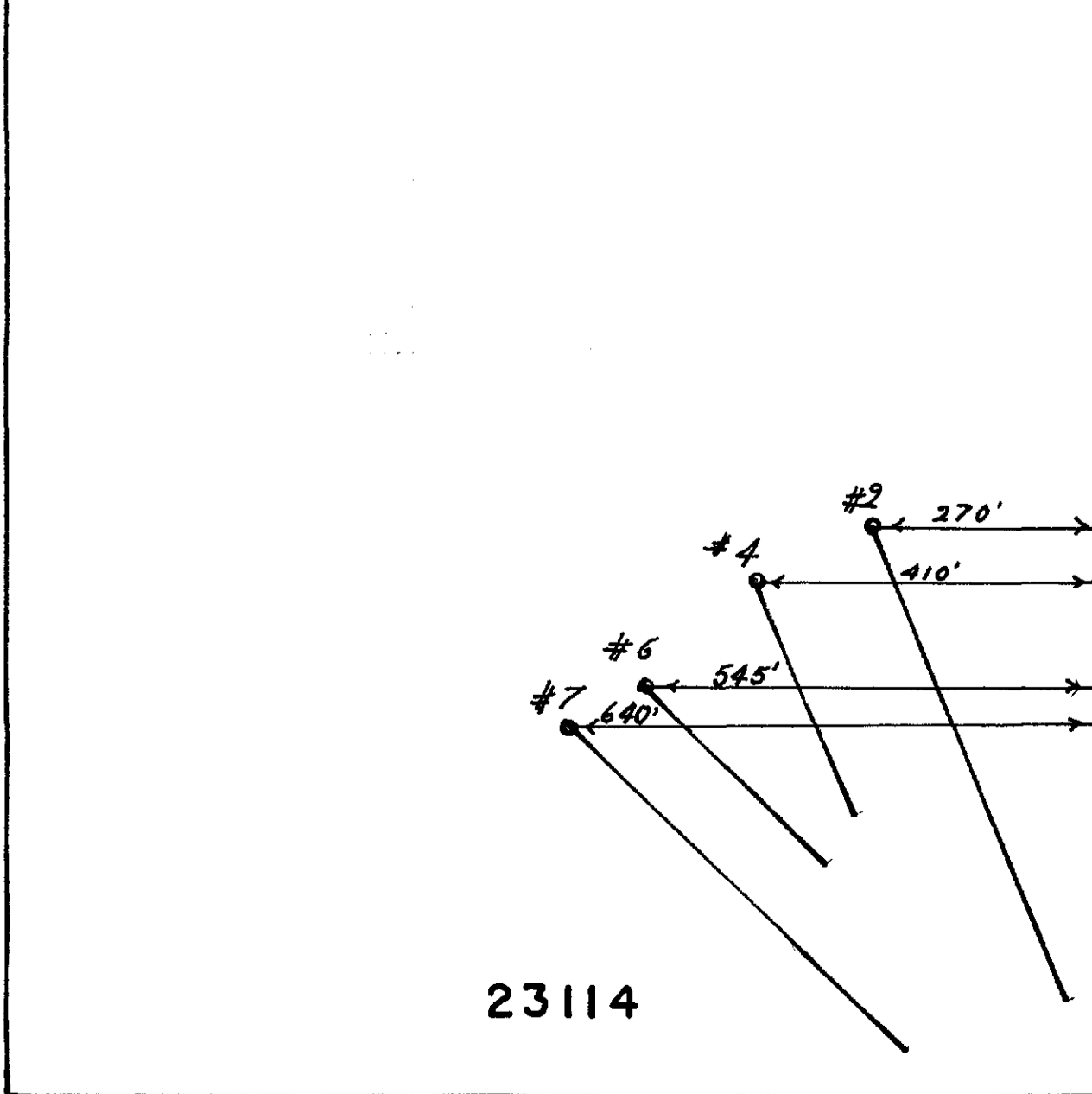
23110

23111



23112

23113



23114

CONECHO MINES · LTD .
PLAN OF DIAMOND DRILL HOLES

SCALE 1" = 200'

