

52F/16SW-0019-B1

LOAD: ComBo

63A.109



52F16SW0051 52F16SW0019B1 LAVAL

010

63A.109

MARK G. SMERCHANSKI
MINING GEOLOGIST
WINNIPEG, MANITOBA
CANADA

GEOLOGICAL REPORT

GRAHAM BOUSQUET GOLD MINES LIMITED - GROUP OF CLAIMS

- (a) The property is located at Beartrack Lake in the Laval Township, in the Dryden-Wabigoon Area, District of Kenora, Ontario.

The property is readily reached by aeroplane from the town of Dryden, a distance of 17 air miles. In addition, the property can be reached by road from Dinorwic which is on the Trans-Canada Highway. At a point 13 miles north of Dinorwic on the road to Sioux Lookout, a two mile logging road joins Troutfly Lake with the main road. The property is then reached by going by canoe across Troutfly Lake, across a one-half mile portage and into Beartrack Lake.

- (b) The property is held under an Option Purchase Agreement by Graham Bousquet Gold Mines Limited from Alex Mosher of Haileybury, Ontario. The Head Office address of the Graham Bousquet Gold Mines Limited is 1116 Federal Building, 85 Richmond St., West, Toronto, Ontario. The property is composed of 15 unsurveyed Mineral Claims being:-

MARK G. SMERCHANSKI
MINING GEOLOGIST
WINNIPEG, MANITOBA
CANADA

" 2 "

K-13709	K-13714	K-13719
K-13710	K-13715	K-13720
K-13711	K-13716	K-13721
K-13712	K-13717	K-13722
K-13713	K-13718	K-13723

The geological work was conducted under my supervision, M. G. Smerchanski, Consulting Mining Geologist, Registered Professional Engineer of Manitoba with offices at 705 Child's Bldg., Winnipeg, Manitoba. The geological work was carried out from June to October 1950, assisted by Dr. G. M. Brownell, Professor of Geology, University of Manitoba, Winnipeg, Manitoba. The geological work is submitted as assessment work on behalf of Graham Bousquet Gold Mines Limited.

(c)

TABLE OF FORMATIONS

QUATERNARY

Pleistocene: Boulder clay, silt, sand, gravel
boulders.

(Unconformity)

PRE-CAMBRIAN

Algoman: Granodiorite, diorite

(Intrusive contact)

Keewatin: Wabigoon volcanics, andesite and agglomerate

(d) Keewatin:

The lava formations are principally andesite .

MARK G. SMERCHANSKI
MINING GEOLOGIST
WINNIPEG, MANITOBA
CANADA

" 3 "

Generally, these are massive but in places are sheared to chlorite schist. In places pillow lavas are present but these are very poorly defined. Where examined the pillow tops could not be determined conclusively.

The agglomerate consists of coarse angular fragments of light-coloured material in a dark green matrix. The matrix is largely altered to chlorite. The contact between the andesite and the agglomerate is well defined.

Algoman:

The diorite is basic and is highly metamorphosed but is definitely an intrusive rock. However, the diorite is not the fresh, brittle diorite that is present in other sections of this area.

The grano-diorite is pink in color and occurs as narrow dykes.

(e) STRUCTURAL SIGNIFICANCE

The andesite has a north-east strike with a steep dip to the south. The pillow lava structure is poorly formed due to the alteration of the andesite. However, where examined it appears that invariably the pillow lava tops are to the south.

MARK G. SMERCHANSKI
MINING GEOLOGIST
WINNIPEG, MANITOBA
CANADA

" 4 "

The diorite is definitely not a coarse phase of the andesite flows as definite intrusive contacts were established. The contacts are not gradational as is usually the condition in coarse volcanic flows.

There is no apparent faulting on this group of claims. However, narrow quartz stringers occupy narrow shear zones in the diorite which have a general strike in two directions. One direction is north 35° east and the other north 76° east.

- (f) The claims were recorded in January of 1950. In June 1950 a base line was established and cross-lines cut at 200 foot intervals. Control stations were chained and located every 100 feet on these cross-lines. From these control lines the claim posts and claim lines were located. All outcrops, drift and muskeg areas were also located from these control lines.

A detailed program of geological mapping was conducted and all shear zones, veins and oxidized sections were thoroughly examined by surface stripping and trenching. See enclosed geological map.

Showing No. 1 located just north of the north line of Mineral Claim K-13712 was trenched by drilling shallow blast holes.

MARK G. SMERCHANSKI
MINING GEOLOGIST
WINNIPEG, MANITOBA
CANADA

" 5 "

The shearing and oxidation in the vicinity of diamond drill hole No. 6 and No. 7 was exposed by trenching.

Showing No. 2 on Mineral Claim K-13720 was opened by trenching along the strike for about 40 feet.

A total of 12 X-ray diamond drill holes were drilled on this group of claims. Their location and numbers is shown on the geological plan. The total footage drilled was 1202.2 feet.

- (g) There were several shear zones and veins examined, trenched, and drilled but the only two showings of any importance are shown on the geological plan as Showing No. 1 on Mineral Claim K-13719 and Showing No. 2 on Mineral Claim K-13720.

Showing No. 1 was traced for a distance of 200 feet and has an average width of 2 feet. The mineralization is principally pyrite with some massive arsenopyrite and sparse chalcopyrite. Those portions of the shearing that carry arsenopyrite will run as high as .30 ozs in gold but these values are "grab samples" only and are not representative across the entire width of 2 feet.

MARK G. SMERCHANSKI
MINING GEOLOGIST

WINNIPEG, MANITOBA
CANADA

" 6 "

Showing No. 2 The shearing originates in a diorite mass and for a distance of about 60 feet along the strike the structure is about 2 feet wide. From 60 feet to 80 feet the zone is about 3 to 4 feet wide and enters the overburden at this point.

Blast hole trenching revealed a fair amount of sphalerite and some galena. Values at this point run about .75 ozs in gold and 5% to 7% in zinc.

This is a very important discovery and will have to be drilled with EXX equipment. At the moment it is difficult to fully evaluate and appreciate the merits of this occurrence. The proposed diamond drilling program might be commenced in the spring of 1951.

Respectfully submitted,



M. G. Smerchanski,
Consulting Mining Geologist.

JANUARY 27th., 1951.

MARK G. SMERCHANSKI
Mining Geologist
Winnipeg, Man.
Canada.

RE: GRAHAM BOUSQUET OPTION - CLAIM NOS. K-13709 to K-13723

1. LINE CUTTING:

10,200 ft of base line
88,400 ft of cross line

This line cutting involved approximately 176 man days and was carried out during the months of June and July 1950.

2. Geological mapping was conducted by myself, M.G.Smerchanski and Dr. G. Brownell, throughout the summer of 1950 in progressive stages in conjunction with the surface work on the property. The time involved in this geological mapping is difficult to estimate but every outcrop on this group of claims was examined and the limits of error do not exceed 20 feet. From this you can readily see that the geological work was done in very close detail.

3. The draughting and colouring about 10 man days.

4. The preparation of the Report was routine work which was compiled from geological field notes and it is rather difficult to estimate the time required for this phase of the work.

**DUPLICATE COPY
POOR QUALITY ORIGINAL
TO FOLLOW**

MARK G. SMERCHANSKI
MINING GEOLOGIST
WINNIPEG, MANITOBA
CANADA

RE: GRAHAM BOUSQUET OPTION - CLAIM NOS. K-13709 to K-13723

1. LINE CUTTING:

10,200 ft of base line
88,400 ft of cross line

This line cutting involved approximately 176 man days and was carried out during the months of June and July 1950.

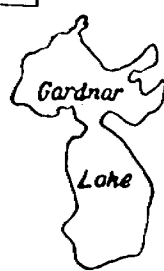
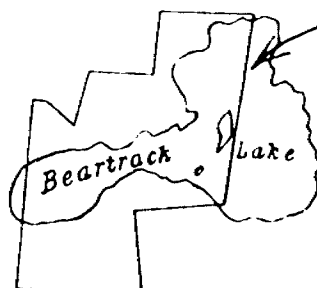
2. Geological mapping was conducted by myself, M. G. Smerchanski and Mr. G. Brownell, throughout the summer of 1950 in progressive stages in conjunction with the surface work on the property. The time involved in this geological mapping is difficult to estimate but every outcrop on this group of claims was examined and the limits of error do not exceed 20 feet. From this you can readily see that the geological work was done in very close detail.

3. The draughting and colouring about 10 man days

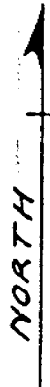
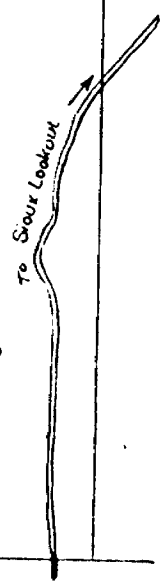
4. The preparation of the Report was routine work which was compiled from geological field notes and it is rather difficult to estimate the time required for this phase of the work.

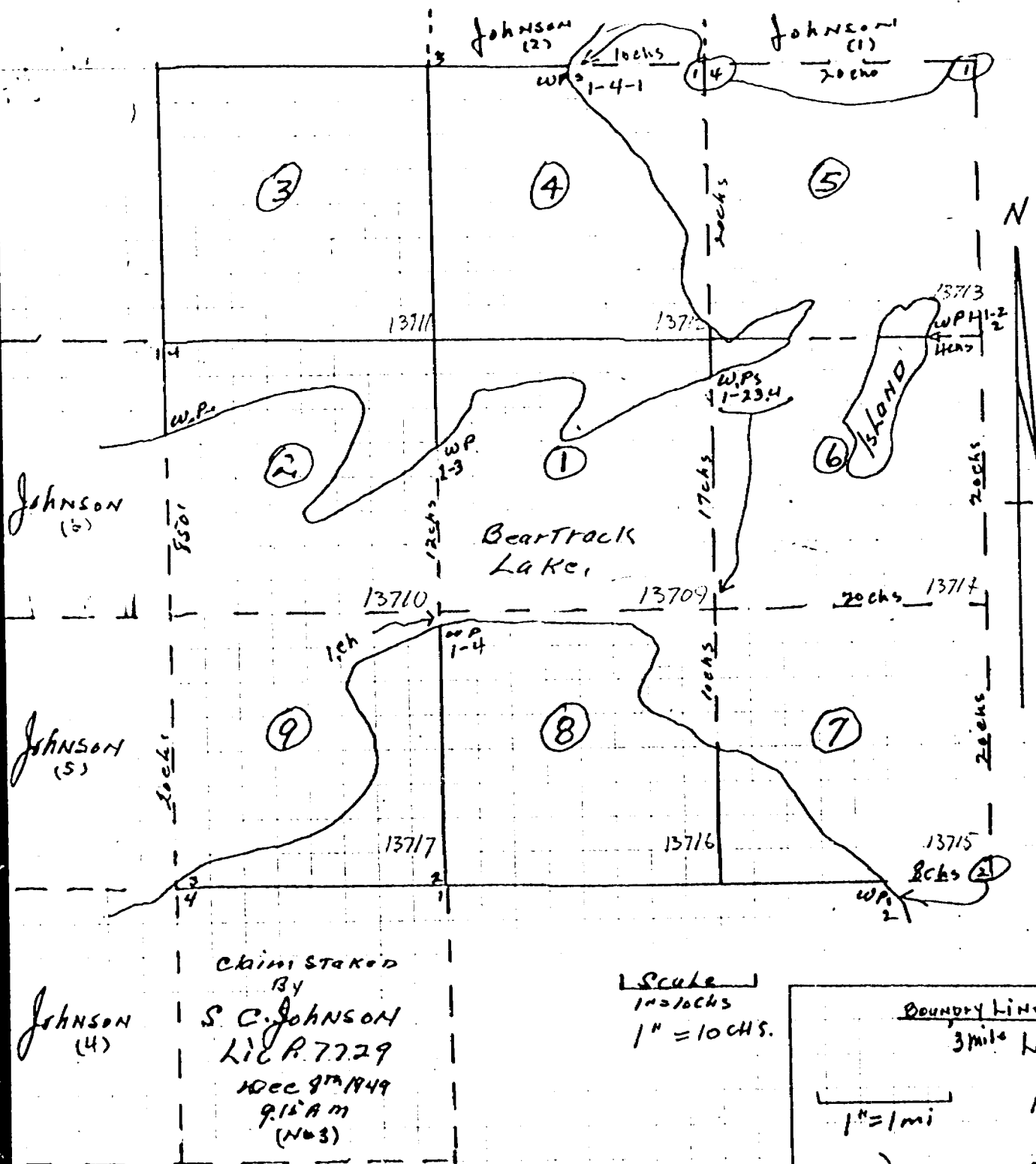
Mark Smerchanski

GRAHAM BOUSQUET
OPTION



LAVAL TP.



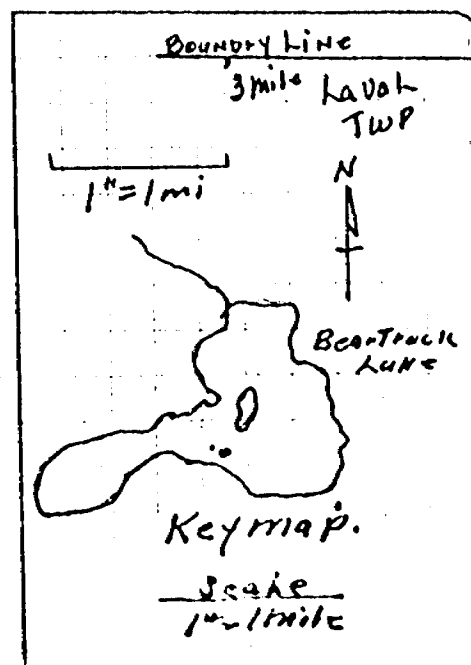


General sketch showing the location of nine claims staked by A.C. Mosher, License B-14444 December 7th and 8th, 1949.

Located in the Township of Laval, District of Kenora in the Kenora Mining division, Province of Ontario. On Beartrack lake.

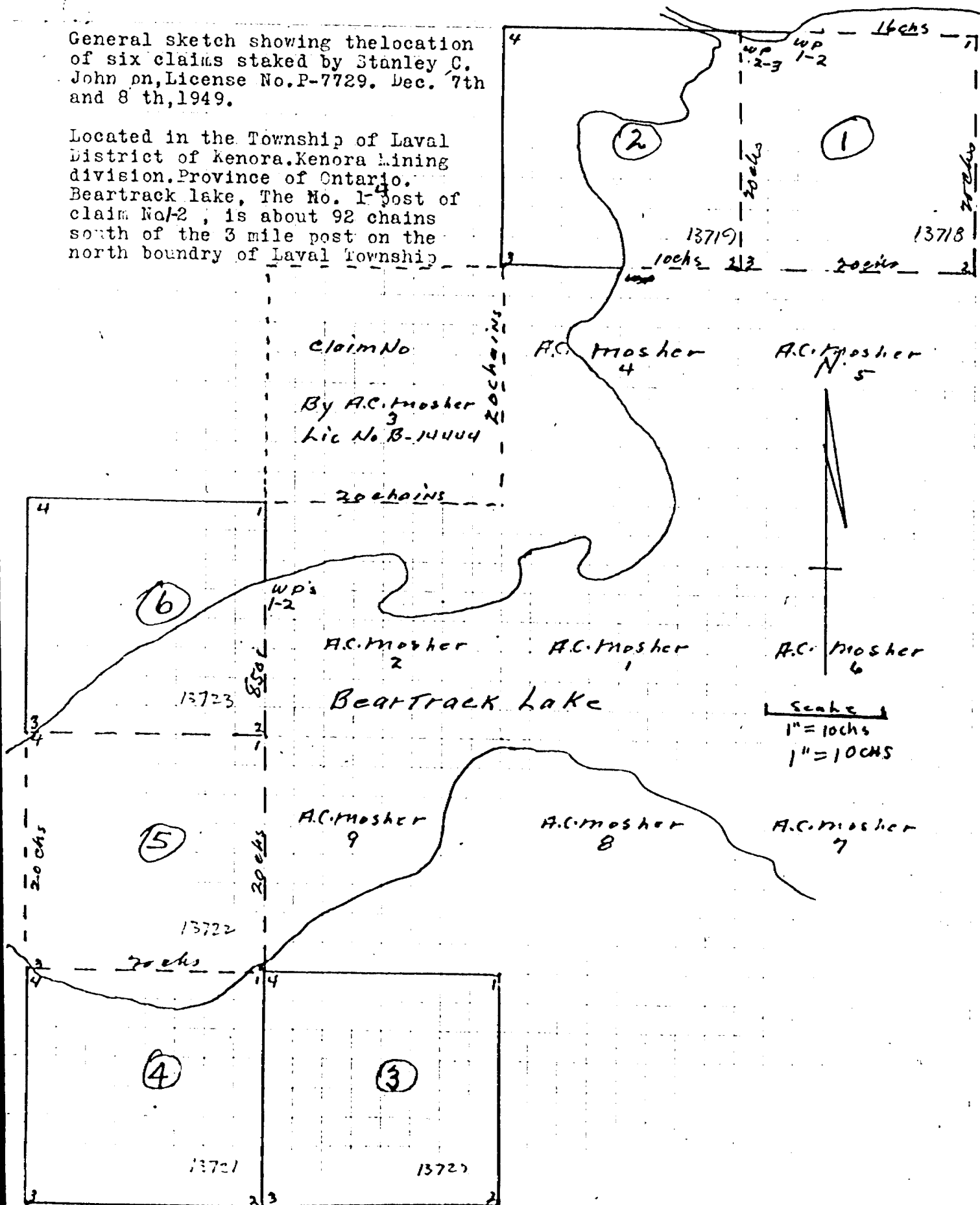
NOTE.

See geological map No. 50 E.
Dryden- Wabigoon Area. District of Kenora.



General sketch showing the location of six claims staked by Stanley C. Johnson, License No. P-7729. Dec. 7th and 8th, 1949.

Located in the Township of Laval District of Kenora. Kenora Mining Division. Province of Ontario. Beartrack Lake, The No. 1 post of claim No. 2, is about 92 chains south of the 3 mile post on the north boundary of Laval Township.



laval

laval Tp ~~in~~ 63A.109

Graham Bonquist ^{Gold Mines Ltd.} option
Bear Track Lake

1950
optioned from Alex Wicker claims recorded Jan 1950.

15 unsurveyed claims.

geol. survey, stripping, trenching
shallow blast drilling holes.

12 x-ray dd holes 1202.2'

shear zones.

Showing 1 200' by 2'

principally pyrite with some arsenic.
& sparse chalco. grab sample 0.30 g. gold.

Showing 2.

hearing in diorite

trenching spoil & some galena

0.75oz gold 5-7% Zn.



52F16SW0051 52F16SW0019B1 LAVAL

900

7 52 F/16 SW

C O P Y

705 Child's Bldg.,
WINNIPEG, Manitoba.
November 6th., 1950.

Dr. F. Chisholm,
Resident Geologist,
Department of Mines,
KENORA, Ontario.

Dear Cr. Chisholm:-

Enclosed please find a geological map on a scale of 200 feet equals 1 inch of the Graham Bousquet Gold Mines Limited - Mosher Group property, Laval Township.

The control lines were established on this property at 200 foot distances and control stations established at every 100 foot intervals. Every outcrop has been located within plus or minus 10 feet. The geology has been completed and there are no other outcrops occurring on the property aside from those shown on the enclosed map.

The principal rocks on the property are andesite, a part of which is in the form of an agglomerate shown in the blue color on Mineral Claim No. K-13713 and K-13714. The other rock is principally diorite. This diorite is an intrusive and is not a coarse phas of the lava flows. The contact between the diorite and the andesite has definite intrusive characteristics and is, of course, later than the andesite. Free gold was found in the shear zone which was subsequently penetrated by diamond drill hole No. 7 but this hole failed to establish any widening of the free gold occurrence. Additional gold values were established at the location fo diamond drill holes No. 1 and No. 6 but these proved unecomonical. Showing No. 1 located on lines between Mineral Claim Nos. K-13719 and K-13712 proved very interesting on the surface but continuance could not be established by subsequent diamond drilling.

Showing No. 2 on Mineral Claim K-13720 appears to have some promise and I will report to you on this showing in more detail at a subsequent date.

I am submitting this map to you and you can make the necessary arrangements with the Mining Recorder, Mr. C. W. McKinnon, as I am going to file the enclosed map with the Department of Mines for assessment work.

Yours very truly,

M. G. Smerchanski

M. G. Smerchanski,

Consulting Mining Geologist.

MGS/fm
Encs.1

ECO EXPLORATION CO. LTD.

(NO PERSONAL LIABILITY)

705 CHILDS BUILDING
WINNIPEG
CANADA

K13 709-23
Dep't of Mines

December 18th., 1950.

Mining Recorder,
Department of Mines,
KENORA, Ontario.

Att'n: Mr. C. L. McKinnon

Dear Sir:-

This is to certify that we have carried out on the Graham Bousquet property 1200 ft of X-ray drilling and 360 ft. of blast hole drilling. This property is located in the Laval Township.

Yours very truly,

ECO EXPLORATION COMPANY LIMITED

B. Parsons.

B. Parsons

/fm

MARK G. SMERCHANSKI
MINING GEOLOGIST
WINNIPEG, MANITOBA
CANADA

705 Child's Bldg.,
WINNIPEG, Manitoba.
January 12th., 1951.

Ontario Department of Mines,
Office of the Mining Recorder,
KENORA, Ontario.

Att'n: Mr. C. W. McKinnon,
Mining Recorder

Dear Mr. McKinnon:-

Re: K-13709 to K-13723 Inclusive

This will acknowledge receipt of your
letter dated January 8th., 1951.

In checking over the diamond drill
footage there was only 1105 feet of diamond drilling which means
that we are short 95 feet and therefore we are short of 50 days
work. Under these conditions on Mineral Claim No. K-13713 we
will only record 145 feet of drilling and which is short of 95
feet or 50 days work which will be completed sometime this coming
summer and recorded in order to complete 4 years work for the above
mentioned group.

We are enclosing another copy of the
diamond drill log which you requested for Dr. Chisholm.

Yours very truly,



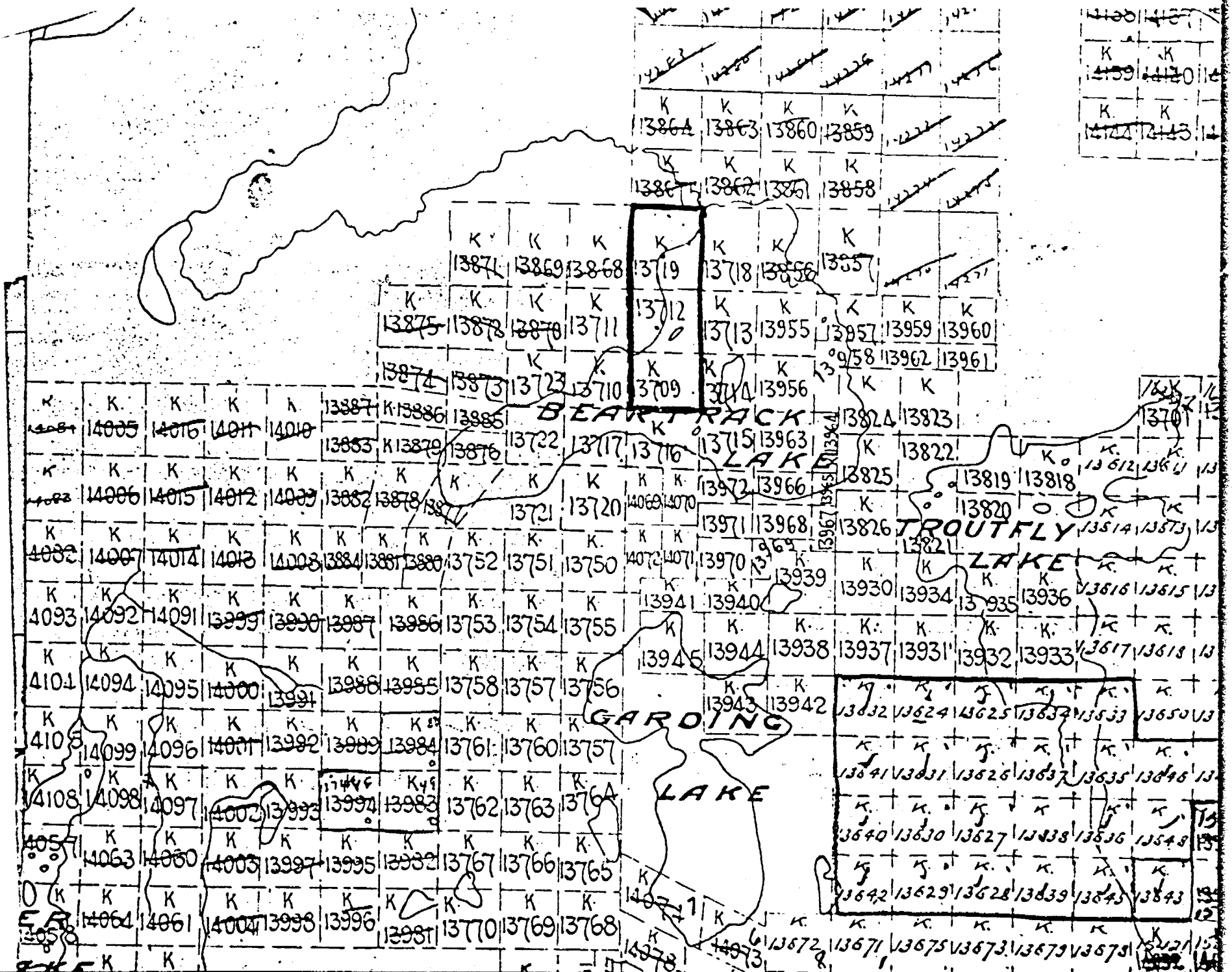
M. G. Smerchanski,
Consulting Mining Geologist.

MGS/fm
Encs.

KENORA MINING
RECEIVED
JAN 15 1951
DIVISION

LAVAL TWP
M-3370

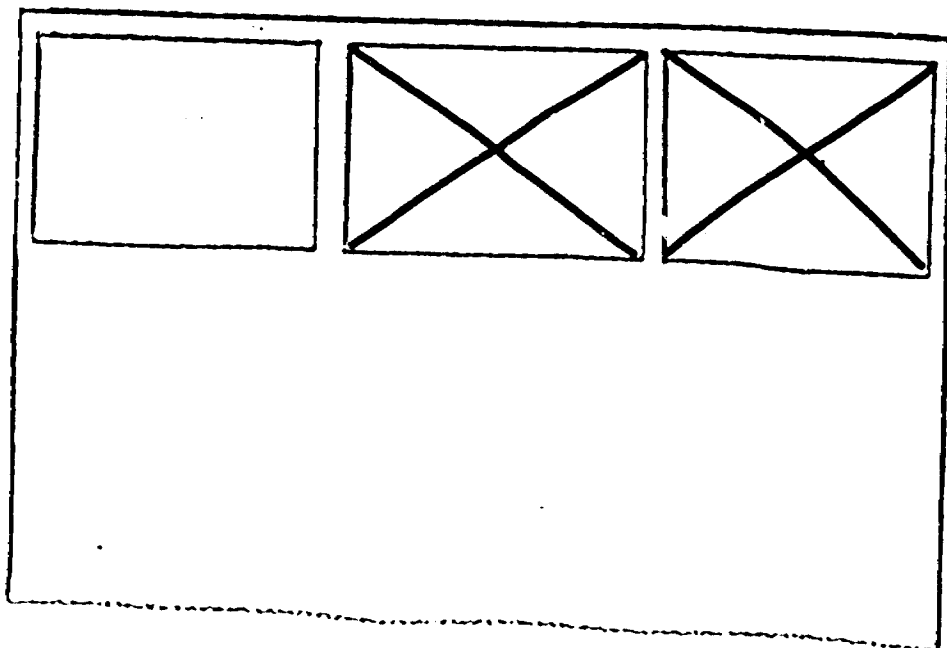
1" = 40 CHAINS.



SEE ACCOMPANYING
MAP(S) IDENTIFIED AS

52F/16SW-0019-B1, #1

LOCATED IN THE MAP
CHANNEL IN THE FOLLOWING
SEQUENCE (X)



Map 9/80

SYMBOLS

- Control Lines
- Marsh
- Shore Zone
- Outcrop Boundaries
- Geological Boundaries

LEGEND

- Agglomerate
- Andesite
- Diorite
- Gneiss

SCALE 1 inch = 200 feet

GRAHAM BOUSQUET GOLD MINES LTD.
LAVAL TOWNSHIP - DRYDEN-WABIGOON AREA
MOSHER GROUP

ALLEGONIAN NORTH
MAINTENANCE ROAD

