



52G13NW0008 2.7568 PARNES LAKE

010

MID-CANADA EXPLORATION SERVICES LIMITED

REPORT ON A GROUND
MAGNETIC
AND
ELECTROMAGNETIC PROGRAM
FOR
GOLDEN RANGE RESOURCES INC.

BURNTHUT ISLAND
PARNES LAKE AREA
SIOUX LOOKOUT, ONTARIO
N.T.S. 52 - G - 13

RECEIVED

JAN 11 1985

MINING LANDS SECTION

Timmins, Ontario
October, 1984

Kenneth Guy
Geologist



52G13NW0008 2.7568 PARNES LAKE

010C

TABLE OF CONTENTS

	Page
SUMMARY AND RECOMMENDATIONS	1
BUDGET	2
INTRODUCTION	3
LOCATION AND ACCESS	3
PROPERTY	4
PREVIOUS WORK AND ECONOMIC GEOLOGY	5
LINE CUTTING	6
SURVEY EQUIPMENT AND PROCEDURES	6, 7
DISCUSSION OF RESULTS	8, 9, 10
REFERENCES	11
DECLARATION FOR ASSESSMENT	
CERTIFICATE	

MAPS

VLF - EM PROFILE SHEET	1	(Back Pocket)
MAGNETIC CONTOUR MAP	1	(Back Pocket)

SUMMARY AND RECOMMENDATIONS

The ground geophysical program was successful in delineating 15 anomalies, six of which are rated Priority -1- and recommended for diamond drill testing. These six anomalies possess more than one of the following characteristics:

- (1) excellent geophysical response
- (2) proximal to a gold occurrence
- (3) located within a stratigraphic sequence which is known to be auriferous.

The following recommendations are made for the project area:

- (1) a detailed compilation should be made of all the data to date - geophysical, geological, historical;
- (2) an HLEM survey on the lake between Burnt Island and the mainland where airborne geophysical anomalies were not recovered on the ground;
- (3) prospecting and trenching at known gold occurrences;
- (4) diamond drilling of the six Priority -1- anomalies outlined by the geophysical surveys;
- (5) diamond drilling of the gold zone previously outlined on Burnthut Island to substantiate and extend the zone.

BUDGET

An estimated budget for the proposed program would be as follows:

PHASE I

(a)	<u>Compilation</u> Summary Report on Exploration with Compilation Map 15 days @ \$200/day	\$ 3,000.
(b)	<u>HLEM Survey</u> Max Min 400' cable, 4 miles 4 miles @ \$300/mile	1,200.
(c)	<u>Diamond Drilling</u> 6 Geophysical Targets 6 Holes on showing 12 holes @ 500 feet/hole 6,000 feet at \$40/foot includes assays and supervision	240,000.
	TOTAL - PHASE I	<u>\$244,200.</u>

INTRODUCTION

During the months of February and March, 1984, a combined Very Low Frequency Electromagnetic (VLF-EM) survey and magnetic survey were carried out over the Burnthut Island property owned by Golden Range Resources Inc.

The purpose of the surveys was to explore for potential gold-bearing structures and stratigraphy, correlating geophysical data with the gold occurrences known on the property.

The purpose of the VLF-EM survey was to detect on the ground, zones of conductivity which may be produced by conductive minerals and/or zones of shearing or faulting. The magnetic survey was performed to determine if any magnetic correlation exists with apparent conductivity and to aid in stratigraphic correlation.

LOCATION AND ACCESS

The Burnthut Island project is located in the District of Kenora, Patricia Mining Division, Ontario.

The project area is centred on Burnthut Island, on Minnitaki Lake, about seven miles south of Sioux Lookout. Sioux Lookout is located 180 miles northwest of Thunder Bay, Ontario.

Access to the property is by boat in summer or snowmobile in winter from Sioux Lookout or the numerous access points to Minnitaki Lake off Highway 72.

PROPERTY

The Burnthut Island Project consists of 30 unpatented mining claims for a total of approximately 1,200 acres.

The claims lie within the Patricia Mining Division, Parnes Lake Area and Kabik Lake Area. The claims covered by the combined surveys are:

Pa 719489 - 496 inclusive	8
719504 - 512 inclusive	9
752552 - 559 inclusive	8
780297 - 301 inclusive	<u>5</u>
	30

A total of 30 unpatented contiguous mining claims.

PREVIOUS WORK AND ECONOMIC GEOLOGY

Gold was originally discovered on Burnthut Island as early as 1897 when the Harvey Syndicate sank a 50 foot shaft on the contact between quartz porphyry and mafic volcanics. No further work is documented until 1947 when Ourgold Mines Ltd. drilled 21 holes, 6,000 feet, on three showings - the original shaft zone, a zone to the west and a zone to the north. In 1961 - 62 Ourgold drilled an additional 18 holes, 2,563 feet, on the three zones.

The gold is associated with the quartz porphyry - volcanic contact zone. The contact is sheared and carbonatized over varying widths of up to 150 feet. The gold is contained in quartz veins with accessory pyrite, mariposite, galena and chalcopyrite.

The zone to the west of the shaft, essentially a continuation of the shaft zone, appears most promising as drilling has outlined a gold bearing section 300 feet long, 4 feet wide, and grading 0.18 oz/ton Au. However, further drilling in 1961 failed to verify the continuity of this section.

During June of 1984 the property was prospected and mapped by the current claim holders. Many quartz veins and old trenches were located and sampled. Of particular note is the sampling of the quartz porphyry-volcanic contact on Burnt Island where a sample of schistose porphyry with 10% pyrite assayed 0.304 oz/ton Au.

LINE CUTTING

A baseline was established at 70° through the north section of the property. Sections are located at 400 foot intervals, with intermediate 200 foot lines on Burnthut and Burnt Islands. Stations were established at 100 foot intervals along all lines.

A total of 36.7 miles of lines were cut.

SURVEY EQUIPMENT AND PROCEDUES

The Very Low Frequency Electromagnetic (VLF-EM) survey was carried out utilizing a Geonics EM-16, operating at a frequency of 24.0 kHz utilizing the Cutler, Maine (NAA) transmission station. Readings of both Inphase and Quadrature were taken every 100 feet with an accuracy of 1% on both.

A total of 34.7 miles of line were surveyed with the VLF-EM survey.

A total of 36.7 miles of line were surveyed with the magnetic survey.

The magnetometer utilized was a Geometrics G-816 proton precession magnetometer measuring the total magnetic field. Readings were taken every 100 feet.

The intersection of the section lines on the base line served as a base station for monitoring diurnal drift. This method allows readings to be taken and corrected with an accuracy of one gamma.

SURVEY EQUIPMENT AND PROCEDURES (Cont'd)

The magnetic data is presented as contoured plan maps. (Back pocket).

The VLF-EM data is presented as profiled plan maps. (Back pocket).

DISCUSSION OF RESULTS

The Very Low Frequency Electromagnetic (VLF-EM) survey detected 15 anomalies. The VLF-EM anomaly summary table summarizes the anomalies and rates their priority for follow-up. The anomalies break down into the following priorities:

PRIORITY -1-	- highest priority - diamond drilling recommended.	6
PRIORITY -2-	- high priority - follow-up contingent on Priority -1- results and additional follow-up.	7
PRIORITY -3-	- no follow-up recommended at this time	2

The main criteria for Priority -1- anomalies is relationship to a known gold occurrence, ie. they are all proximal, along strike or within the same stratigraphic interval as a gold occurrence.

The magnetic survey is utilized in assisting stratigraphic correlation. The major drawback of the magnetics on this property is the lake; water depth exceeds 140 feet in places and in general is quite deep. This results in a smoothing and contrasting low of the magnetics over the water due to the depth to source. However the magnetics are useful in delineating the volcanic-porphyry contact.

VLF-EM ANOMALY SUMMARY

<u>ANOMALY</u>	<u>LENGTH</u>	<u>MIN.DIST. PEAK-PEAK</u>	<u>MAX.DEFL. PEAK-PEAK</u>	<u>DEPTH</u>	<u>QUAD</u>	<u>MAG</u>	<u>PRIORITY</u>	<u>CONCLUSIONS</u>
A	4 lines	100	38	mod	--	flanks lo	2	contingent on B
B	3 lines	100	48	shallow	x-over	mag hi	1	proximal to Au showing- on quartz-porphry volcanic contact - diamond drill
C	3 lines	100	40	shallow	x-over	mag lo	1	on strike from Au showing, quartz-porphry volcanic contact- diamond drill
D	6 lines	200	67	mod	x-over	inflection between hi - lo	2	proximal to Au showing and q.p.-vol. contact- contingent on C
E	12 lines	200	108	mod	x-over	lo	1	excellent geophysical response in q.p. - diamond drill
F	2 lines	100	18	shallow	x-over	--	2	in q.p. - prospect
G	10+ lines	100	42	mod to deep	reverse x-over	lo	3	weak geophysical response, mainly in lake
H	3 lines	200	29	mod	x-over	hi	3	in volcanics

VLF-EM ANOMALY SUMMARY

<u>ANOMALY</u>	<u>LENGTH</u>	<u>MIN.DIST. PEAK-PEAK</u>	<u>MAX.DEPL. PEAK-PEAK</u>	<u>DEPTH</u>	<u>QUAD</u>	<u>MAG</u>	<u>PRIORITY</u>	<u>CONCLUSIONS</u>
I	1 line	200	22	mod	x-over	flanks hi	2	prospect - edge of property
J	4 lines	200	67	mod	--	mag lo	1	in lake - may be on contact of q.p.-volc.
K	2 lines	200	41	mod	x-over	mag hi	2	edge of claim group
L	3 lines	200	45	mod	x-over	mag hi	2	contingent on M
M	3 lines	100	59	shallow	x-over	mag hi	1	good geophysical - proximal to Au showing
N	7 lines	300	120	mod	x-over	inflection	1	on q.p. - volc. contact along strike from Au occurrence - 1 or 2 diamond drill holes recommended
O	3 lines	200	101	mod	--	inflection	2	on q.p.-volc.contact in lake, along strike from Au occurrence - contingent upon N

DISCUSSION OF RESULTS (Cont'd)

A more detailed discussion of the Priority -1- anomaly selections follows:

ANOMALY B

This anomaly is an excellent target as it possesses all three characteristics of a Priority -1- anomaly:

- 1) excellent geophysical response;
- 2) proximal to the north showing on Burnthut Island;
- 3) excellent stratigraphic location as it lies on the porphyry-volcanic contact which hosts gold mineralization in the area.

For the above reasons this anomaly represents an excellent diamond drill target.

ANOMALY C

This anomaly possesses all the characteristics of Anomaly B but lies on the opposite contact therefore represents an excellent diamond drill target.

ANOMALY E

This anomaly represents an excellent geophysical response and lies within the quartz porphyry unit proximal to the volcanic contact. Should be tested with a diamond drill hole.

ANOMALY J

A good geophysical response in a relatively unknown area as it lies under the lake; appears to lie on the volcanic-porphyry contact - a good diamond drill target.

ANOMALY M

An excellent geophysical response and proximity to the gold occurrence discovered during the summer of 1984 by D. Black makes this anomaly an excellent diamond drill target.

ANOMALY N

This long strike length features possesses excellent geophysical characteristics and lies along strike from an Au occurrence. At least one, possibly two diamond drill holes are recommended.

REFERENCES

- BLACK, D. 1984 - Geology Report on the Burnthut
Island Project
- GUY, K. 1983 - Summary Report on Exploration -
Neepawa Island Project for
Golden Range Resources Inc.
- JOHNSTON, F.S. 1972 - Geology of the Vermilion -
Abram Lakes Area, District of
Kenora - ODM GR 101

STATEMENT FOR ASSESSMENT WORK

I, Kenneth Guy, certify to the following:

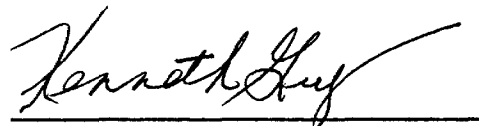
A total of 36.7 miles of lines were cut.

A total of 34.7 miles of line were surveyed with the VLF-EM survey.

A total of 36.7 miles of line were surveyed with the magnetic survey.

The claims are owned by Golden Range Resources Inc. and include the following:

Pa 719489 - 496 inclusive
719504 - 512 inclusive
752552 - 559 inclusive
780297 - 301 inclusive
Total - 30 claims



Kenneth Guy, Geologist

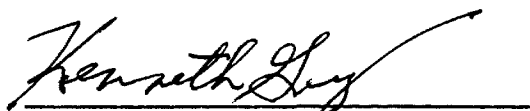
CERTIFICATE

I, the undersigned, Kenneth Guy, residing at 180 Nadine Street, South Porcupine, Ontario, graduated with a Bachelor of Applied Science, degree in Earth Science - Geology from the University of Waterloo, Waterloo, Ontario in 1978.

I have been employed in the field of Geology since graduation in 1978.

I am a fellow of the Geological Association of Canada.

I do not hold, nor do I expect to receive an interest of any kind in these claims held by Golden Range Resources Inc. nor in any other mining claims they may have.

A handwritten signature in cursive script that reads "Kenneth Guy". The signature is written in dark ink and is positioned above a horizontal line.

Kenneth Guy, Geologist

Timmins, Ontario
October, 1984



52G13NW0008 2.7568 PARNES LAKE

900

Mining Lands Section

File No 2.7568

Control Sheet

TYPE OF SURVEY GEOPHYSICAL

GEOLOGICAL

GEOCHEMICAL

EXPENDITURE

MINING LANDS COMMENTS:

lga. L.D.

S. Hurst

Signature of Assessor

84-12-17

Date

Fred Matthews, Mining Lands

84-149
2.7568

Dec 17

Note - Only days credit allowed for "Expenditures" section may be in the "Expend. Days Cr." column. Do not use shaded areas below.

GEOPHYSICAL SURVEY
Claim Holder's Name

GOLDEN RANGE RESOURCES INC.
Address

189 Preston Street, Timmins, Ontario P4N 3N4
Survey Company

Mid-Canada Exploration Services Limited
Name and Address of Author (of Geo-Technical report)

Kenneth Guy, 180 Nadine St., Porcupine, Ont.

lowest portion Area: **PARNES LAKE M2150**
Prospector's Licence No. **T 1324**

Date of Survey (from & to): **18 Day, 03 Mo, 84, 30 Day, 04 Mo, 84**
Total Miles of line Cut: **36.7**

Credits Requested per Each Claim in Columns at right

Special Provisions	Geophysical	Days per Claim
For first survey: Enter 40 days. (This includes line cutting)	- Electromagnetic	40
	- Magnetometer	20
	- Radiometric	
	- Other	
	Geological	
For each additional survey, using the same grid: Enter 20 days (for each)	Geophysical	Days per Claim
	- Electromagnetic	
	- Magnetometer	
	- Radiometric	
	- Other	
Man Days Complete reverse side and enter total(s) here	Geological	
	Geochemical	
	Geophysical	Days per Claim
	- Electromagnetic	
	- Magnetometer	
Airborne Credits Note: Special provisions credits do not apply to Airborne Surveys.	- Radiometric	
	Electromagnetic	Days per Claim
	Magnetometer	
	Radiometric	

Mining Claims Traversed (List in numerical sequence)

Mining Claim		Expend. Days Cr.	Mining Claim		Expend. Days Cr.
Prefix	Number		Prefix	Number	
Pa	719489		Pa	752558	
	719490			752559	
	719491			780297	
	719492			780299	
	719493			780300	
	719494			780301	
	719495				
	719496				
	719504				
	719505				
	719506				
	719507				
	719508				
	719509				
	719510				
	719511				
	719512				
	752552				
	752553				
	752554				
	752555				
	752556				
	752557				

RECEIVED
OCT 22 1984
MINING LANDS SECTION

Expenditures (excludes power stripping)

Type of Work Performed

Performed on Claim(s)

Calculation of Expenditure Days Credits

Total Expenditures: **\$** ÷ **15** = **Total Days Credits**

Instructions
Total Days Credits may be apportioned at the claim holder's choice. Enter number of days credits per claim selected in columns at right.

Pa. 719489

Total number of mining claims covered by report/work: **30**

For Office Use Only

Total Days Cr. Recorded: **1800**

Date Recorded: **Oct 17, 1984**

Date Approved as Recorded: **See Serialized Statement**

Branch Office

Date: **October 15/84**

Recorded Holder or Agent (Signature): *[Signature]*

Certification Verifying Report of Work

I hereby certify that I have a personal and intimate knowledge of the facts set forth in the Report of Work annexed hereto, being performed on or addressed same during and/or after its completion and the annexed report is true.

Name and Postal Address of Person Certifying:
Denis Laforest, 189 Preston Street, Timmins, Ontario P4N 3N4

Date Certified: **October 15/84**

Certified by: *[Signature]*

1985 03 11

Your File: 84-149
Our File: 2.7568

Mining Recorder
Ministry of Natural Resources
P.O. Box 309
Sioux Lookout, Ontario
POY 2T0

Dear Sir:

RE: Approval Letter dated February 6, 1985
Report of Work #84-149

With reference to the above-noted letter, Mining Claim PA 780298 was incorrectly listed as part of the group. Please disregard any references made to this claim.

Yours sincerely,

S.E. Yundt
Director
Land Management Branch

Whitney Block, Room 6643
Queen's Park
Toronto, Ontario
M7A 1W3
Phone: (416) 965-4888

S. Hurst:mc

cc: Golden Range Resources Inc
189 Preston Street
Timmins, Ontario
M7A 1W3
Phone: (416) 965-4888

cc: Kenneth Guy
180 Nadine Street
Porcupine, Ontario
PON 1C0

cc: Resident Geologist
Sioux Lookout, Ontario

1985 02 06

Your File: 84-149
Our File: 2.7568

Mining Recorder
Ministry of Natural Resources
P.O. Box 309
Sioux Lookout, Ontario
POV 2T0

Dear Sir:

RE: Notice of Intent dated January 21, 1985.
Geophysical (Electromagnetic & Magnetometer)
Survey on Mining Claims PA 719489 et al
in the Parnes Lake Area.

The assessment work credits, as listed with the
above-mentioned Notice of Intent, have been approved
as of the above date.

Please inform the recorded holder of these mining
claims and so indicate on your records.

Yours sincerely,

S.E. Yundt
Director
Land Management Branch

Whitney Block, Room 6643
Queen's Park
Toronto, Ontario
M7A 1N3
Phone:(416)965-6918

S. Hurst:sc

cc: Golden Range Resources Inc
189 Preston Street
Timmins, Ontario
P4N 3N4
Attn: Denis Laforest

cc: Kenneth Guy
180 Nadine Street
Porcupine, Ontario
PON 1C0

cc: Mr. G.H. Ferguson
Mining & Lands Commissioner
Toronto, Ontario

Resident Geologist
Sioux Lookout, Ontario

Recorded Holder	GOLDEN RANGE RESOURCES INC
Township or Area	PARNES LAKE AREA

Type of survey and number of Assessment days credit per claim	Mining Claims Assessed
Geophysical Electromagnetic _____ 40 days Magnetometer _____ days Radiometric _____ days Induced polarization _____ days Other _____ days Section 77 (19) See "Mining Claims Assessed" column Geological _____ days Geochemical _____ days Man days <input type="checkbox"/> Airborne <input type="checkbox"/> Special provision <input checked="" type="checkbox"/> Ground <input checked="" type="checkbox"/> <input type="checkbox"/> Credits have been reduced because of partial coverage of claims. <input type="checkbox"/> Credits have been reduced because of corrections to work dates and figures of applicant.	PA 719489 to 494 inclusive 719504 to 512 inclusive 752552 - 53 752555 to 559 inclusive 780297 to 301 inclusive 719495-96

Special credits under section 77 (16) for the following mining claims

30 DAYS CREDIT
 PA 752554

No credits have been allowed for the following mining claims

not sufficiently covered by the survey
 Insufficient technical data filed

The Mining Recorder may reduce the above credits if necessary in order that the total number of approved assessment days recorded on each claim does not exceed the maximum allowed as follows: Geophysical — 80; Geological — 40; Geochemical — 40; Section 77(19)—80:



Ministry of
Natural
Resources

Jan 25 Feb. 5/85

AMENDED

.1985 01 21

Your File: 84-149
Our File: 2.7568

Mining Recorder
Ministry of Natural Resources
P.O. Box 309
Sioux Lookout, Ontario
POV 2T0

Dear Sir:

Enclosed are two copies of a Notice of Intent with statements listing a reduced rate of assessment work credits to be allowed for a technical survey. Please forward one copy to the recorded holder of the claims and retain the other. In approximately fifteen days from the above date, a final letter of approval of these credits will be sent to you. On receipt of the approval letter, you may then change the work entries on the claim record sheets.

For further information, if required, please contact Mr. R.J. Pichette at 416/965-4888.

Yours sincerely,

[Signature]
S.E. Yundt
Director
Land Management Branch

Whitney Block, Room 6643
Queen's Park
Toronto, Ontario
M7A 1W3

R.J. S. Hurst:mc

Encls.

cc: Golden Range Resources Inc
189 Preston Street
Timmins, Ontario
P4N 3N4
Attention: Denis Laforest

cc: Kenneth Guy
180 Nadine Street
Porcupine, Ontario
PON 1C0

cc: Mr. G.H. Ferguson
Mining & Lands Commissioner
Toronto, Ontario



Ministry of
Natural
Resources

AMENDED

Notice of Intent
for Technical Reports

1985 01 21

2.7568/84-149

An examination of your survey report indicates that the requirements of The Ontario Mining Act have not been fully met to warrant maximum assessment work credits. This notice is merely a warning that you will not be allowed the number of assessment work days credits that you expected and also that in approximately 15 days from the above date, the mining recorder will be authorized to change the entries on his record sheets to agree with the enclosed statement. Please note that until such time as the recorder actually changes the entry on the record sheet, the status of the claim remains unchanged.

If you are of the opinion that these changes by the mining recorder will jeopardize your claims, you may during the next fifteen days apply to the Mining and Lands Commissioner for an extension of time. Abstracts should be sent with your application.

If the reduced rate of credits does not jeopardize the status of the claims then you need not seek relief from the Mining and Lands Commissioner and this Notice of Intent may be disregarded.

If your survey was submitted and assessed under the "Special Provision-Performance and Coverage" method and you are of the opinion that a re-appraisal under the "Man-days" method would result in the approval of a greater number of days credit per claim, you may, within the said fifteen day period, submit assessment work breakdowns listing the employees names, addresses and the dates and hours they worked. The new work breakdowns should be submitted direct to the Land Management Branch, Toronto. The report will be re-assessed and a new statement of credits based on actual days worked will be issued.



Jan 11/85

1984 12 27

Your File: 84-149
Our File: 2.7568

Mining Recorder
Ministry of Natural Resources
P.O. Box 309
Sioux Lookout, Ontario
POV 2T0

Dear Sir:

Enclosed are two copies of a Notice of Intent with statements listing a reduced rate of assessment work credits to be allowed for a technical survey. Please forward one copy to the recorded holder of the claims and retain the other. In approximately fifteen days from the above date, a final letter of approval of these credits will be sent to you. On receipt of the approval letter, you may then change the work entries on the claim record sheets.

For further information, if required, please contact Mr. R.J. Pichette at 416/965-4888.

Yours sincerely,

S.E. Yundt
Director
Land Management Branch

Whitney Block, Room 6643
Queen's Park
Toronto, Ontario
M7A 1W3

S. Hurst:mc

Encls.

cc: Golden Range Resources Inc
189 Preston Street
Timmins, Ontario
P4N 3N4
Attention: Denis Laforest

cc: Kenneth Guy
180 Nadine Street
Porcupine, Ontario
PON 1C0

cc: Mr. G.H. Ferguson
Mining & Lands Commissioner
Toronto, Ontario



Ministry of
Natural
Resources

Ontario

Notice of Intent
for Technical Reports

1984 12 27

2.7568/84-149

An examination of your survey report indicates that the requirements of The Ontario Mining Act have not been fully met to warrant maximum assessment work credits. This notice is merely a warning that you will not be allowed the number of assessment work days credits that you expected and also that in approximately 15 days from the above date, the mining recorder will be authorized to change the entries on his record sheets to agree with the enclosed statement. Please note that until such time as the recorder actually changes the entry on the record sheet, the status of the claim remains unchanged.

If you are of the opinion that these changes by the mining recorder will jeopardize your claims, you may during the next fifteen days apply to the Mining and Lands Commissioner for an extension of time. Abstracts should be sent with your application.

If the reduced rate of credits does not jeopardize the status of the claims then you need not seek relief from the Mining and Lands Commissioner and this Notice of Intent may be disregarded.

If your survey was submitted and assessed under the "Special Provision-Performance and Coverage" method and you are of the opinion that a re-appraisal under the "Man-days" method would result in the approval of a greater number of days credit per claim, you may, within the said fifteen day period, submit assessment work breakdowns listing the employees names, addresses and the dates and hours they worked. The new work breakdowns should be submitted direct to the Land Management Branch, Toronto. The report will be re-assessed and a new statement of credits based on actual days worked will be issued.

Recorded Holder
GOLDEN RANGE RESOURCES INC

Township or Area
PARNES LAKE AREA

Type of survey and number of Assessment days credit per claim	Mining Claims Assessed
<p>Geophysical</p> <p>Electromagnetic _____ days</p> <p>Magnetometer _____ 20 _____ days</p> <p>Radiometric _____ days</p> <p>Induced polarization _____ days</p> <p>Other _____ days</p> <p>Section 77 (19) See "Mining Claims Assessed" column</p> <p>Geological _____ days</p> <p>Geochemical _____ days</p> <p>Man days <input type="checkbox"/> Airborne <input type="checkbox"/></p> <p>Special provision <input checked="" type="checkbox"/> Ground <input checked="" type="checkbox"/></p> <p><input type="checkbox"/> Credits have been reduced because of partial coverage of claims.</p> <p><input type="checkbox"/> Credits have been reduced because of corrections to work dates and figures of applicant.</p>	<p>PA 719489 to 494 inclusive 719504 to 512 inclusive 752552-55-57-58-59 780297 to 301 inclusive</p>

Special credits under section 77 (16) for the following mining claims

15 DAYS CREDIT

PA 752553-54-56

No credits have been allowed for the following mining claims

not sufficiently covered by the survey Insufficient technical data filed

PA 719495-96

The Mining Recorder may reduce the above credits if necessary in order that the total number of approved assessment days recorded on each claim does not exceed the maximum allowed as follows: Geophysical — 80; Geological — 40; Geochemical — 40; Section 77(19)—80:

GOLDEN RANGE RESOURCES INC.

Telephone (705) 267-7971

189 Preston St. Timmins, Ontario P4N 3N4

TSE - GORT

January 10, 1985

Ministry of Natural Resources
Whitney Block, Room 6643
Queen's Park
Toronto, Ontario
M7A 1W3

Attention: Susan Hurst

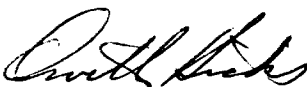
Re: Your File: 2.7568
Claims Pa 719495, Pa 719496

Dear Madam:

Enclosed are duplicate copies of a Report on a Ground Magnetic and Electromagnetic Program for Golden Range Resources Inc., Burnthut Island along with maps.

I have also enclosed a copy of the letter along with the application for Extension of Time on the above-noted claims.

Yours truly,



Orville E. Hicks

/ch

Enclosures

RECEIVED	
Land Management Branch	
CIRCULATE	<input type="checkbox"/>
COMMENTS PLEASE	<input type="checkbox"/>
BY	
JAN 11 1985	
S. E. YUNDT	
J. R. MORTON	
J. C. SMITH	
W. L. GOOD	
M. J. HOGAN	
W. P. BROOK	
TURN TO R. 6643	

RECEIVED

JAN 11 1985

MINING LANDS SECTION

GOLDEN RANGE RESOURCES INC.

Telephone (705) 267-7971

189 Preston St. Timmins, Ontario P4N 3N4

TSE - GORT

January 10, 1985

A. J. Stewart, District Manager
Mining Recording Office
P. O. Box 309
Sioux Lookout, Ontario
POV 2T0

Re: Abstracts

Dear Sir:

Would you please send abstracts for claims as per attached list.
Upon receipt a cheque will be forwarded.

Enclosed is an Application for Extension of Time on mining claims
Pa 719495 and Pa 719494 along with a cheque for \$20.00 to cover costs.

Yours truly,



Claudia Hanninen

/ch

Enclosure

RECEIVED

JAN 11 1985

MINING LANDS SECTION

Name of applicant

GOLDEN RANGE RESOURCES INC.

Address

189 PRESTON STREET

TIMMINS, ONTARIO P4N 3N4

Telephone

267-7971

Claim numbers

PA 719495, PA 719496

Total Claims

2

Reasons why work not done

Work is done - insufficient technical data filed. Reports with sufficient technical data submitted to Ministry of Natural Resources to the attention of Susan Hurst in Toronto on January 10, 1985.

Length of time desired

one month

Approximate date when work will commence

work is done

Type and extent of work contemplated (indicate total number of days work to be performed)

Have metal tags been affixed to claim corner posts?

Yes

Date of Application

January 10

19 85

Signature of Applicant



List of Claims - Golden Range Resources Inc.

Parnes Lake

Claim Nos. Pa650239 - 245 inclusive
652801 - 803 inclusive
741551 - 578 inclusive
741580 - 583 inclusive
741585 - 600 inclusive
742301 - 321 inclusive
697343
697342

Burnthut

Claim Nos. Pa719489 - 496 inclusive
719504 - 512 inclusive
752552 - 559 inclusive
780297 - 301 inclusive

GOLDEN RANGE RESOURCES INC.

Telephone (705) 267-7971

189 Preston St. Timmins, Ontario P4N 3N4

TSE - GORT

December 13, 1984

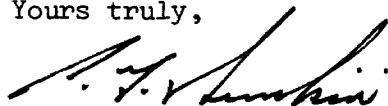
Mr. F. W. Matthews
Ontario Ministry of Natural Resources
W1617, Whitney Block
Queen's Park
Toronto, Ontario
M7A 1W3

Re: Geophysical Survey

Dear Sir:

Enclosed are duplicate copies of a Report on a Ground Magnetic and Electromagnetic Program for Golden Range Resources Inc., Burnthut Island, Parnes Lake Area, Sioux Lookout, Ontario.

Yours truly,



Peter G. Hunkin
Vice-President &
Secretary Treasurer

/ch

Enclosures

RECEIVED
DEC 14 1984
MINING LANDS SECTION

MID-CANADA EXPLORATION SERVICES LIMITED

REPORT ON A GROUND
MAGNETIC
AND
ELECTROMAGNETIC PROGRAM
FOR
GOLDEN RANGE RESOURCES INC.

BURNTHUT ISLAND
PARNES LAKE AREA
SIOUX LOOKOUT, ONTARIO
N.T.S. 52 - G - 13

Timmins, Ontario
October, 1984

Kenneth Guy
Geologist

RECEIVED
DEC 14 1984
MINING LANDS SECTION

Do NOT SCAN

TABLE OF CONTENTS

	Page
SUMMARY AND RECOMMENDATIONS	1
BUDGET	2
INTRODUCTION	3
LOCATION AND ACCESS	3
PROPERTY	4
PREVIOUS WORK AND ECONOMIC GEOLOGY	5
LINE CUTTING	6
SURVEY EQUIPMENT AND PROCEDURES	6, 7
DISCUSSION OF RESULTS	8, 9, 10
REFERENCES	11
DECLARATION FOR ASSESSMENT	
CERTIFICATE	

MAPS

VLF - EM PROFILE SHEET	1	(Back Pocket)
MAGNETIC CONTOUR MAP	1	(Back Pocket)

SUMMARY AND RECOMMENDATIONS

The ground geophysical program was successful in delineating 15 anomalies, six of which are rated Priority -1- and recommended for diamond drill testing. These six anomalies possess more than one of the following characteristics:

- (1) excellent geophysical response
- (2) proximal to a gold occurrence
- (3) located within a stratigraphic sequence which is known to be auriferous.

The following recommendations are made for the project area:

- (1) a detailed compilation should be made of all the data to date - geophysical, geological, historical;
- (2) an HLEM survey on the lake between Burnt Island and the mainland where airborne geophysical anomalies were not recovered on the ground;
- (3) prospecting and trenching at known gold occurrences;
- (4) diamond drilling of the six Priority -1- anomalies outlined by the geophysical surveys;
- (5) diamond drilling of the gold zone previously outlined on Burnthut Island to substantiate and extend the zone.

BUDGET

An estimated budget for the proposed program would be as follows:

PHASE I

(a)	<u>Compilation</u> Summary Report on Exploration with Compilation Map 15 days @ \$200/day	\$ 3,000.
(b)	<u>HLEM Survey</u> Max Min 400' cable, 4 miles 4 miles @ \$300/mile	1,200.
(c)	<u>Diamond Drilling</u> 6 Geophysical Targets 6 Holes on showing 12 holes @ 500 feet/hole 6,000 feet at \$40/foot includes assays and supervision	240,000.
	TOTAL - PHASE I	<u>\$244,200.</u>

INTRODUCTION

During the months of February and March, 1984, a combined Very Low Frequency Electromagnetic (VLF-EM) survey and magnetic survey were carried out over the Burnthut Island property owned by Golden Range Resources Inc.

The purpose of the surveys was to explore for potential gold-bearing structures and stratigraphy, correlating geophysical data with the gold occurrences known on the property.

The purpose of the VLF-EM survey was to detect on the ground, zones of conductivity which may be produced by conductive minerals and/or zones of shearing or faulting. The magnetic survey was performed to determine if any magnetic correlation exists with apparent conductivity and to aid in stratigraphic correlation.

LOCATION AND ACCESS

The Burnthut Island project is located in the District of Kenora, Patricia Mining Division, Ontario.

The project area is centred on Burnthut Island, on Minnitaki Lake, about seven miles south of Sioux Lookout. Sioux Lookout is located 180 miles northwest of Thunder Bay, Ontario.

Access to the property is by boat in summer or snowmobile in winter from Sioux Lookout or the numerous access points to Minnitaki Lake off Highway 72.

PROPERTY

The Burnthut Island Project consists of 30 unpatented mining claims for a total of approximately 1,200 acres.

The claims lie within the Patricia Mining Division, Parnes Lake Area and Kabik Lake Area. The claims covered by the combined surveys are:

Pa 719489 - 496 inclusive	8
719504 - 512 inclusive	9
752552 - 559 inclusive	8
780297 - 301 inclusive	<u>5</u>
	30

A total of 30 unpatented contiguous mining claims.

PREVIOUS WORK AND ECONOMIC GEOLOGY

Gold was originally discovered on Burnthut Island as early as 1897 when the Harvey Syndicate sank a 50 foot shaft on the contact between quartz porphyry and mafic volcanics. No further work is documented until 1947 when Ourgold Mines Ltd. drilled 21 holes, 6,000 feet, on three showings - the original shaft zone, a zone to the west and a zone to the north. In 1961 - 62 Ourgold drilled an additional 18 holes, 2,563 feet, on the three zones.

The gold is associated with the quartz porphyry - volcanic contact zone. The contact is sheared and carbonatized over varying widths of up to 150 feet. The gold is contained in quartz veins with accessory pyrite, mariposite, galena and chalcopyrite.

The zone to the west of the shaft, essentially a continuation of the shaft zone, appears most promising as drilling has outlined a gold bearing section 300 feet long, 4 feet wide, and grading 0.18 oz/ton Au. However, further drilling in 1961 failed to verify the continuity of this section.

During June of 1984 the property was prospected and mapped by the current claim holders. Many quartz veins and old trenches were located and sampled. Of particular note is the sampling of the quartz porphyry-volcanic contact on Burnt Island where a sample of schistose porphyry with 10% pyrite assayed 0.304 oz/ton Au.

LINE CUTTING

A baseline was established at 70° through the north section of the property. Sections are located at 400 foot intervals, with intermediate 200 foot lines on Burnthut and Burnt Islands. Stations were established at 100 foot intervals along all lines.

A total of 36.7 miles of lines were cut.

SURVEY EQUIPMENT AND PROCEDUES

The Very Low Frequency Electromagnetic (VLF-EM) survey was carried out utilizing a Geonics EM-16, operating at a frequency of 24.0 kHz utilizing the Cutler, Maine (NAA) transmission station. Readings of both Inphase and Quadrature were taken every 100 feet with an accuracy of 1% on both.

A total of 34.7 miles of line were surveyed with the VLF-EM survey.

A total of 36.7 miles of line were surveyed with the magnetic survey.

The magnetometer utilized was a Geometrics G-816 proton precession magnetometer measuring the total magnetic field. Readings were taken every 100 feet.

The intersection of the section lines on the base line served as a base station for monitoring diurnal drift. This method allows readings to be taken and corrected with an accuracy of one gamma.

SURVEY EQUIPMENT AND PROCEDURES (Cont'd)

The magnetic data is presented as contoured plan maps. (Back pocket).

The VLF-EM data is presented as profiled plan maps. (Back pocket).

DISCUSSION OF RESULTS

The Very Low Frequency Electromagnetic (VLF-EM) survey detected 15 anomalies. The VLF-EM anomaly summary table summarizes the anomalies and rates their priority for follow-up. The anomalies break down into the following priorities:

- | | | |
|--------------|--|---|
| PRIORITY -1- | - highest priority - diamond drilling recommended. | 6 |
| PRIORITY -2- | - high priority - follow-up contingent on Priority -1- results and additional follow-up. | 7 |
| PRIORITY -3- | - no follow-up recommended at this time | 2 |

The main criteria for Priority -1- anomalies is relationship to a known gold occurrence, ie. they are all proximal, along strike or within the same stratigraphic interval as a gold occurrence.

The magnetic survey is utilized in assisting stratigraphic correlation. The major drawback of the magnetics on this property is the lake; water depth exceeds 140 feet in places and in general is quite deep. This results in a smoothing and contrasting low of the magnetics over the water due to the depth to source. However the magnetics are useful in delineating the volcanic-porphyry contact.

VLF-EM ANOMALY SUMMARY

<u>ANOMALY</u>	<u>LENGTH</u>	<u>MIN.DIST. PEAK-PEAK</u>	<u>MAX.DEFL. PEAK-PEAK</u>	<u>DEPTH</u>	<u>QUAD</u>	<u>MAG</u>	<u>PRIORITY</u>	<u>CONCLUSIONS</u>
A	4 lines	100	38	mod	--	flanks lo	2	contingent on B
B	3 lines	100	48	shallow	x-over	mag hi	1	proximal to Au showing- on quartz-porphyr volcanic contact - diamond drill
C	3 lines	100	40	shallow	x-over	mag lo	1	on strike from Au showing, quartz-porphyr volcanic contact- diamond drill
D	6 lines	200	67	mod	x-over	inflection between hi - lo	2	proximal to Au showing and q.p.-vol. contact- contingent on C
E	12 lines	200	108	mod	x-over	lo	1	excellent geophysical response in q.p. - diamond drill
F	2 lines	100	18	shallow	x-over	--	2	in q.p. - prospect
G	10+ lines	100	42	mod to deep	reverse x-over	lo	3	weak geophysical response, mainly in lake
H	3 lines	200	29	mod	x-over	hi	3	in volcanics

VLF-EM ANOMALY SUMMARY

<u>ANOMALY</u>	<u>LENGTH</u>	<u>MIN.DIST. PEAK-PEAK</u>	<u>MAX.DEPL. PEAK-PEAK</u>	<u>DEPTH</u>	<u>QUAD</u>	<u>MAG</u>	<u>PRIORITY</u>	<u>CONCLUSIONS</u>
I	1 line	200	22	mod	x-over	flanks hi	2	prospect - edge of property
J	4 lines	200	67	mod	--	mag lo	1	in lake - may be on contact of q.p.-volc.
K	2 lines	200	41	mod	x-over	mag hi	2	edge of claim group
L	3 lines	200	45	mod	x-over	mag hi	2	contingent on M
M	3 lines	100	59	shallow	x-over	mag hi	1	good geophysical - proximal to Au showing
N	7 lines	300	120	mod	x-over	inflection	1	on q.p. - volc. contact along strike from Au occurrence - 1 or 2 diamond drill holes recommended
O	3 lines	200	101	mod	--	inflection	2	on q.p.-volc.contact in lake, along strike from Au occurrence - contingent upon N

DISCUSSION OF RESULTS (Cont'd)

A more detailed discussion of the Priority -1- anomaly selections follows:

ANOMALY B

This anomaly is an excellent target as it possesses all three characteristics of a Priority -1- anomaly:

- 1) excellent geophysical response;
- 2) proximal to the north showing on Burnthut Island;
- 3) excellent stratigraphic location as it lies on the porphyry-volcanic contact which hosts gold mineralization in the area.

For the above reasons this anomaly represents an excellent diamond drill target.

ANOMALY C

This anomaly possesses all the characteristics of Anomaly B but lies on the opposite contact therefore represents an excellent diamond drill target.

ANOMALY E

This anomaly represents an excellent geophysical response and lies within the quartz porphyry unit proximal to the volcanic contact. Should be tested with a diamond drill hole.

ANOMALY J

A good geophysical response in a relatively unknown area as it lies under the lake; appears to lie on the volcanic-porphyry contact - a good diamond drill target.

ANOMALY M

An excellent geophysical response and proximity to the gold occurrence discovered during the summer of 1984 by D. Black makes this anomaly an excellent diamond drill target.

ANOMALY N

This long strike length features possesses excellent geophysical characteristics and lies along strike from an Au occurrence. At least one, possibly two diamond drill holes are recommended.

REFERENCES

- BLACK, D. 1984 - Geology Report on the Burnthut
Island Project
- GUY, K. 1983 - Summary Report on Exploration -
Neepawa Island Project for
Golden Range Resources Inc.
- JOHNSTON, F.S. 1972 - Geology of the Vermilion -
Abram Lakes Area, District of
Kenora - ODM GR 101

STATEMENT FOR ASSESSMENT WORK

I, Kenneth Guy, certify to the following:

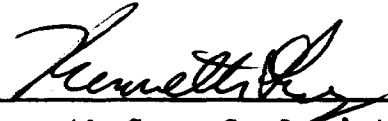
A total of 36.7 miles of lines were cut.

A total of 34.7 miles of line were surveyed with the VLF-EM survey.

A total of 36.7 miles of line were surveyed with the magnetic survey.

The claims are owned by Golden Range Resources Inc. and include the following:

Pa 719489 - 496 inclusive
719504 - 512 inclusive
752552 - 559 inclusive
780297 - 301 inclusive
Total - 30 claims


Kenneth Guy, Geologist




CERTIFICATE

I, the undersigned, Kenneth Guy, residing at 180 Nadine Street, South Porcupine, Ontario, graduated with a Bachelor of Applied Science, degree in Earth Science - Geology from the University of Waterloo, Waterloo, Ontario in 1978.

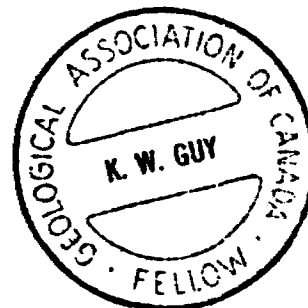
I have been employed in the field of Geology since graduation in 1978.

I am a fellow of the Geological Association of Canada.

I do not hold, nor do I expect to receive an interest of any kind in these claims held by Golden Range Resources Inc. nor in any other mining claims they may have.


Kenneth Guy, Geologist

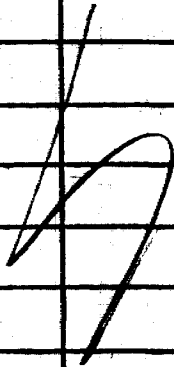
Timmins, Ontario
October, 1984



Qual. 2.5778

2.7568

	M	EM				
19489	✓	✓	752552	✓	✓	
90	✓	✓	53	✓	✓	
91	✓	✓	54	✓	✓	
92	✓	✓	55	✓	✓	
93	✓	✓	56	✓	✓	
94	✓	✓	57	✓	✓	
95	M	S	58	✓	✓	
96	✓	✓	59	✓	✓	
119504	✓	✓	480299	✓	✓	
5	✓	✓	300	✓	✓	
6	✓	✓	301	✓	✓	
7	✓	✓				
8	✓	✓				
9		✓				
10	✓	✓				
11	✓	✓				
12	✓	✓				



2000N -

1000N -

BASE LINE -

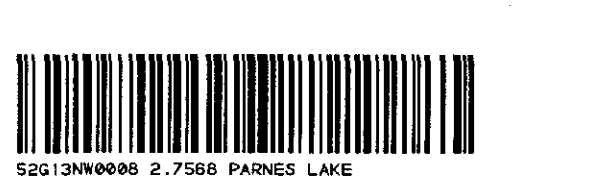
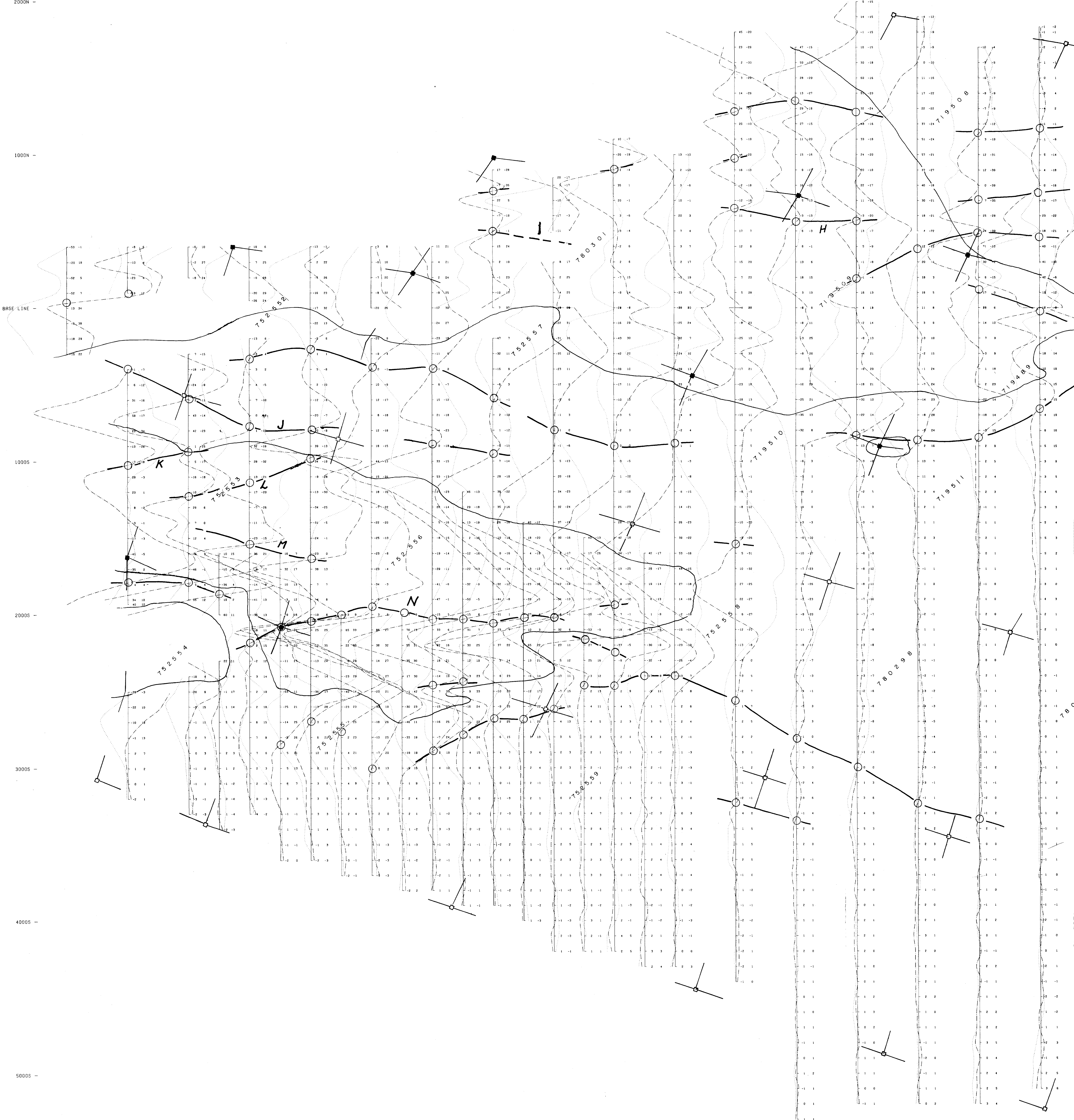
1000S -

2000S -

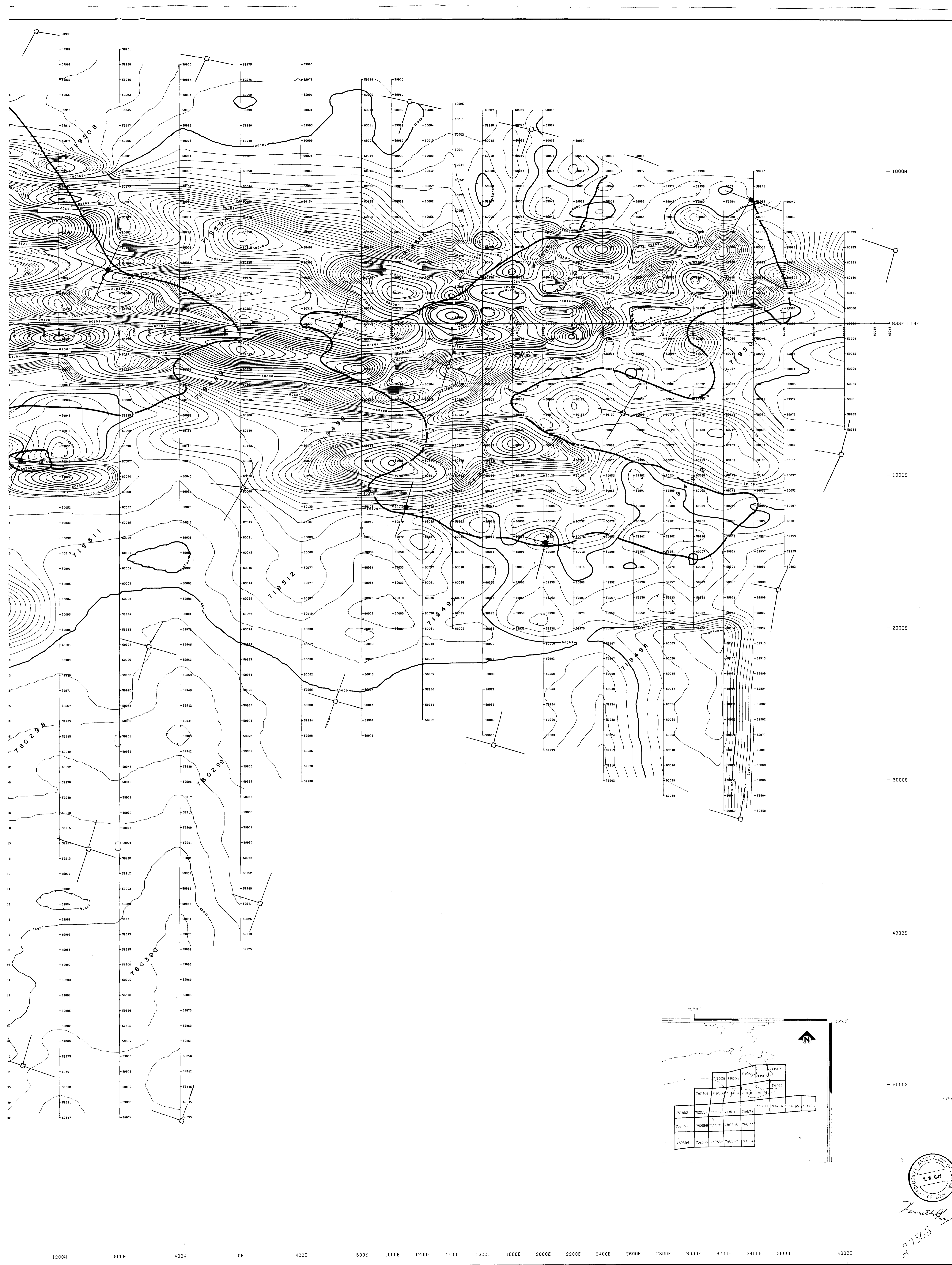
3000S -

4000S -

5000S -



6400W 6000W 5800W 5600W 5400W 5200W 5000W 4800W 4600W 4400W 4200W 4000W 3800W 3600W 3400W 3200W 3000W 2800W 2400W 2000W 1600W 1200W 800W 400W



1000N
BRSE LINE
2000S
3000S
4000S
5000S

VLF SURVEY

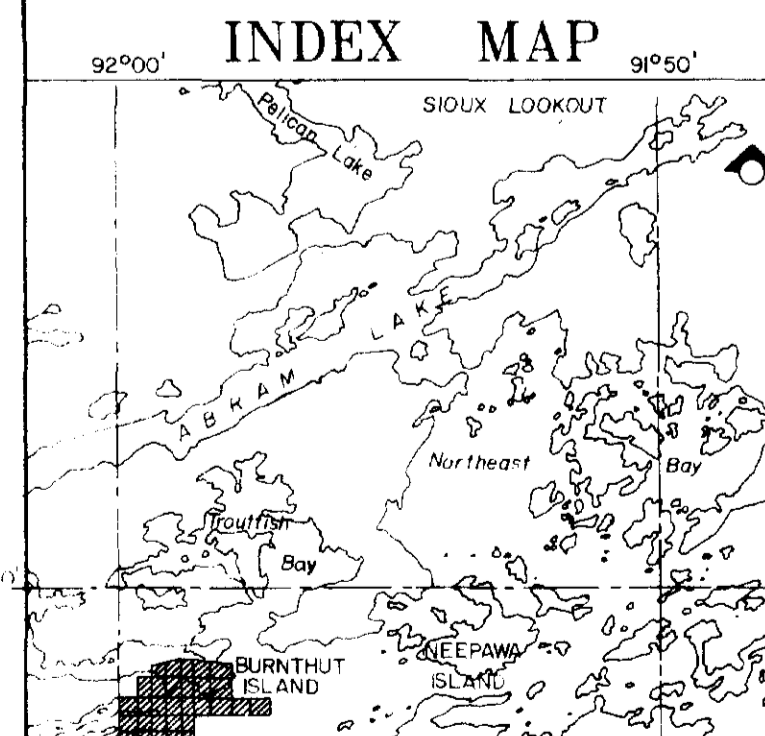
MAGNETIC SURVEY

LESS GAMMAS

60000 Contours
Depression contours

TOPOGRAPHIC

- Claim post located
- Claim post assumed position
- Witness post
- Property boundary
- Flowline
- Access Road
- Swamp
- Stream
- Lakeshore
- Outcrop
- Drill Target (proposed)
- Railway



MID-CANADA
EXPLORATION SERVICES LIMITED

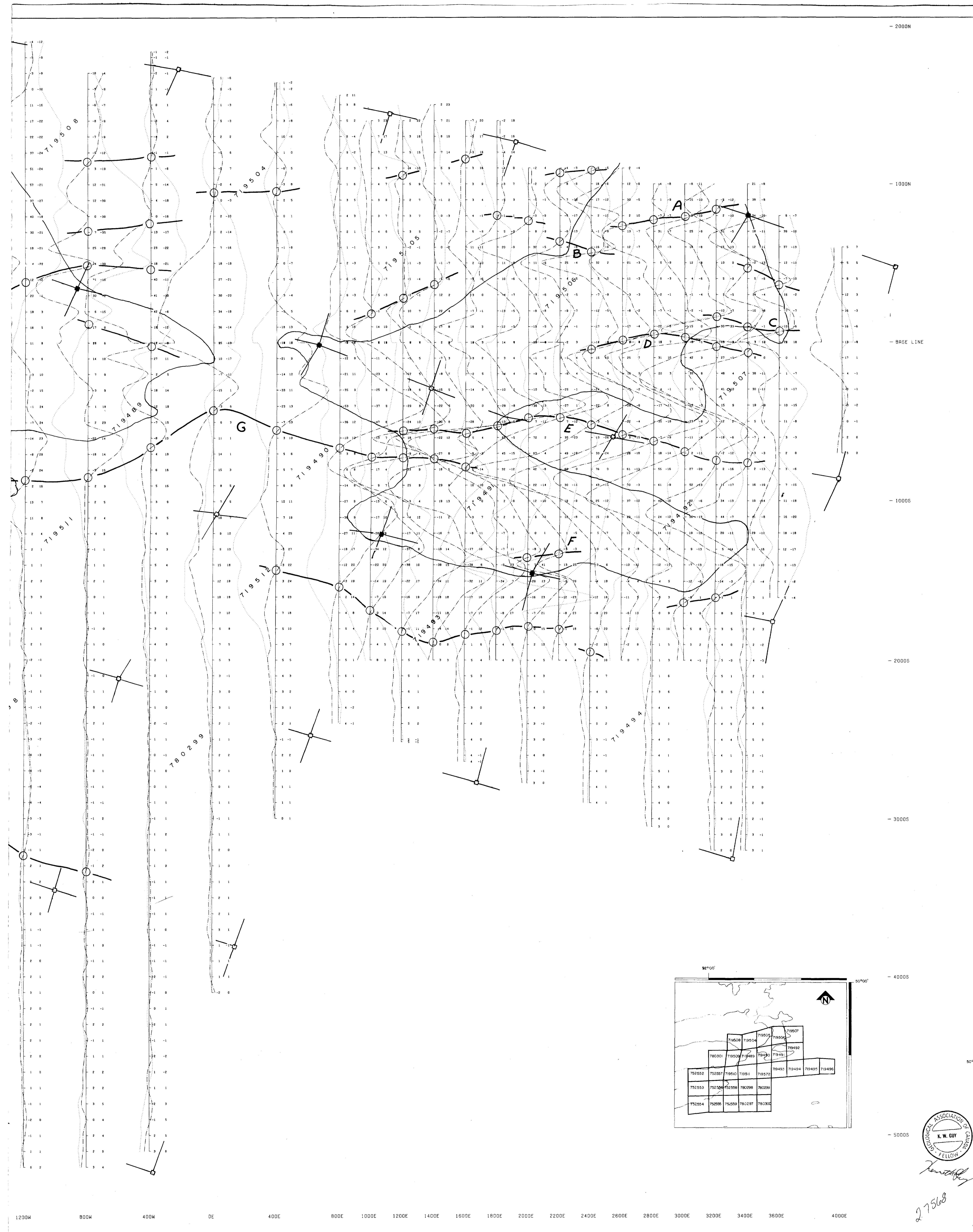
for
GOLDEN RANGE
RESOURCES INC.

MAGNETIC SURVEY

Operator(s):
Interpreted by: **BURNTHUT ISLAND**
Drawn by:
Approved by:
Revised by:
SCALE 1"=200'
Drawing No. **1 of 2**

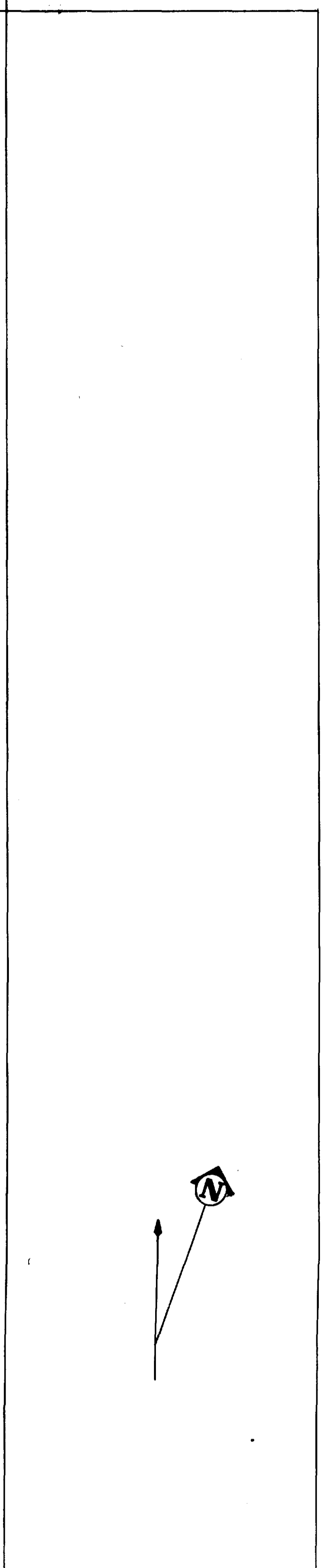
Handwritten signature and number:
27568

1200W 800W 400W 0E 400E 800E 1000E 1200E 1400E 1600E 1800E 2000E 2200E 2400E 2600E 2800E 3000E 3200E 3400E 3600E 4000E

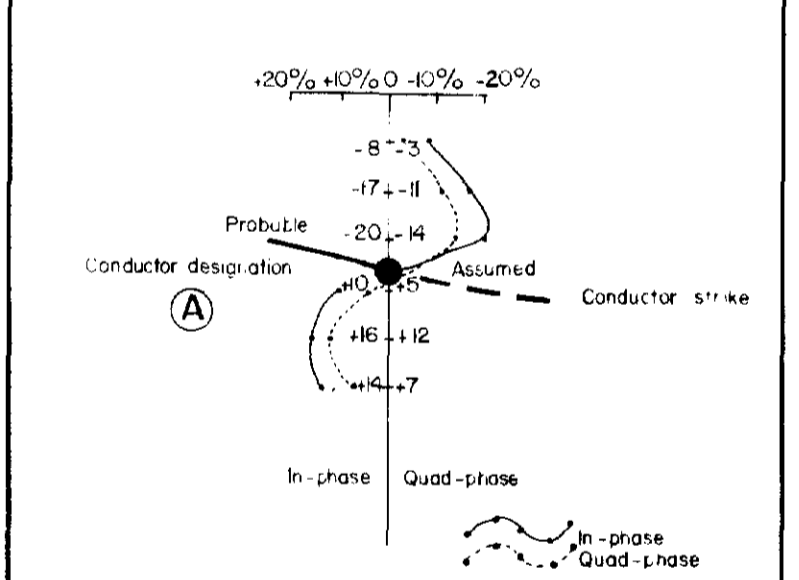


- 2000N
- 1000N
- BASE LINE
- 1000S
- 2000S
- 3000S
- 4000S
- 5000S

1200W 800W 400W DE 400E 800E 1000E 1200E 1400E 1600E 1800E 2000E 2200E 2400E 2600E 2800E 3000E 3200E 3400E 3600E 4000E



VLF SURVEY



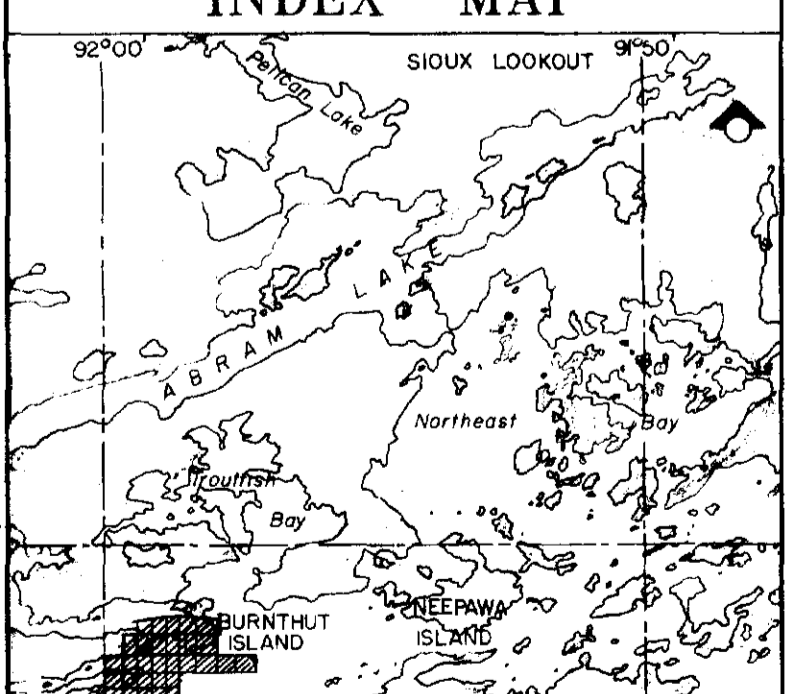
MAGNETIC SURVEY

- LESS GAMMAS
- Contours
- Depression contours

TOPOGRAPHIC

- Claim post located
- Claim post assumed position
- Witness post
- Property boundary
- Powerline
- Access Road
- Swamp
- Stream
- Lakeshore
- Outcrop
- Drill target (proposed)
- Railway

INDEX MAP



MID-CANADA
EXPLORATION SERVICES LIMITED
for
GOLDEN RANGE
RESOURCES INC.

VLF SURVEY

Operator(s):	Project:
Interpreted by:	BURNTHUT
Drawn by:	ISLAND
Approved by:	
Revised by:	
SCALE: 1"=200'	Drawing No.
0 50 100 200 300	2 of 2

27568

