

52G13NW0038 52G13NW0011D1 PARNES LAKE

010

Diamond Drilling

Area PARNES LAKE

Report N^o 12

Work performed ~~by~~^{80:} MacDonal Property

Claim N ^o	Hole N ^o	Footage	Date	Note	
PA 11459	30	103'	No Date		
	31	97'	No Date		
	32	72'	No Date		
	33	85'	No Date		
	34	81'	No Date		
	35	92"	No Date		
	36	70'	No Date		
	37	84'	No Date		
	38	72'	No Date		
	54	390'	Oct/51		
	63	150'	Dec/51		
	69	396'	Jan/52		
	PA 11455	39	98'	No date	
		40	91'	No Date	
41		92'	No Date		
42		108'	No Date		
60		410'	Nov./51		
65		155'	Dec./51		
66		250'	Dec./51		
67		231'	Dec./51		
PA 11456	43	51'	No Date		
	44	163'	Aug./51		
PA 11461	51	346'	Oct./51		
	53	333'	Oct./51		

24 D.H

4020 feet

Notes:

9-8-97

DIAMOND DRILL RECORD

Hole No. S30
Bearing S.55°W.
Angle 45°

0' - 5' Casing
5 - 103 Altered andesite
103 End of Hole

Hole No. S31
Bearing S.55°W.
Angle 45°

0' - 13' Casing
13 - 60.5 Coarse grained flow rock
60.5 - 97 Chlorite schist
97 End of Hole

Hole No. 32
Bearing N.55°E.
Angle 41°

0' - 5' Casing
5 - 44 Altered andesite
44 - 70 Fine grained dioritic rock
70 - 72 Fine agglomerate
72 End of Hole

Hole No. S33
Bearing - North
Angle 34°

0' - 3' Casing
3 - 85 Altered andesite
85 End of Hole

Hole No. S34
Bearing - North
Angle 39°

0' - 4' Casing
4 - 81 Altered andesite
81 End of Hole

Hole No. S35
Bearing - North
Angle 43°

0' - 8' Casing
8 - 92 Altered andesite
92 End of Hole.

9-9-97

DIAMOND DRILL RECORD

Hole No. S36
Bearing S.55°W.
Angle 40°

0' - 10' Casing
10 - 70 Altered andesite
70 End of Hole

Hole No. S37
Bearing N.55°E.
Angle 35°

0' - 2' Casing
2 - 62 Altered andesite
62 - 76 Fine grained dioritic rock
76 - 84 Agglomerate
84 End of Hole

Hole No. S38
Bearing N.55°E.
~~25~~ Angle 35°

0' - 15' Casing
15 - 48.5 Altered andesite
48.5 - 59 Fine grained dioritic rock
59 - 72 Agglomerate
72 End of Hole.

9-9-95

DIAMOND DRILL RECORD

Hole No. S39
Bearing S. 20° E.
Angle 37°

0' - 12' Casing
12 - 50.5 Andesite
50.5 - 70.5 Quartz feldspar porphyry
70.5 - 98 Andesite
98 End of Hole

Hole No. S40
Bearing S. 20° E.
Angle 37°

0' 7.5 Casing
7.5 - 91' Altered andesite.
91 End of Hole

Hole No. S41
Bearing S. 20° E.
Angle 38°

0' - 3' Casing
3 - 21 Quartz feldspar porphyry
21 - 49 Complex of porphyry and porphyritized greenstone
49 - 55 Porphyry
55 - 76 Complex of porphyry and porphyritized greenstone
76 - 79 Porphyry
79 - 92 altered and carbonatized greenstone.
92 End of Hole

Hole No. S42
Bearing S. 25° E.
Angle 44°

0' - 4' Casing
4 - 108 Andesite
108 End of Hole.

Hole No. S43
Bearing S. 25° E.
Angle 42°

0' - 4.5' Casing
4.5 - 51 Andesite
51 End of Hole.

9-1-96

Prop / Naapawa Island Hole No. 44

Location.....Lat.....2060.....Dep.....2200.....

Coordinates..... Destination.....

Length.....163.....ft. Dip. collar.....44°.....bearing south.....ft.....ft.....

Date started.....Aug.....28th.....1951.....Date finished.....August.....30th.....1951.....Logged by.....B.....M.....Arnott.

Footage	DESCRIPTION	Sample No.	Core Length ft.	Gold oz	Sludge Gold t
0' - 60'	Casing (Clay)				
60' - 87.9	Altered andesite, Carbonatized quartz and calcite threading, vory sparse scattered fine pyrite.				
87.9 - 101	Dacite				
101 - 114	Andesite				
114 - 144.0	Fine Agglomerate				
144.6-149.2	Sericite schist, few narrow quartz stringers, sparse fine pyrite.	551	4.6	0.01	
149.2 -152.4	Rusty schist, 50% Ankerite.	552	3.2	0.02	
152.4 -153.3	Schist with 50% quartz, no sulphides	553	0.0	0.02	
153.3-154.3	Lost core (Mud seam ?)				
154.3 -155.3	Rusty schist 50% ankerite.	554	1.0	0.02	
155.3- 163	Dacite				0.03 (150-163)
163	End of Hole				
	Angle at 153' --- 32°				
	Work done by:- Patricia Drilling Co. Sioux Lookout, Ont.				
	Signed By- B. M. Arnott.				

9-6-98

Prop. Neepawa Island Hole No. 51

Location Lat. 2000 Dep. 4850 Bearing 180°

Coordinates..... Destination.....

Length 346 ft. Dip. collar 50° 30' ft.....ft.....ft.....ft.....

Date started Oct 12 1951 Date finished Oct. 14th 1951 Logged by H. M. Arnett.

Drilled by Patricia Drilling Co.

Footage	DESCRIPTION	Sample No.	Core Length ft.	Gold Oz
0 - 20	Casing			
20 - 50	Andesitic Greenstone			
50 - 55	Andesite, veined & threaded with quartz scattered pyrite	664	5.0	Tr
55.0 - 58.9	Fine grained feldspar porphyry, altered & fractured & threaded with quartz sparse pyrite	665	3.9	0.02
58.9 - 62.5	Diorite			
62.5 - 63.9	Diorite, sheared, brecciated & Carbonatized			
63.9 - 73.4	Diorite slightly sheared			
73.4 - 83.5	Andesite			
83.5 - 87.0	Andesite, brecciated & filled with quartz sparse fine pyrite	666	3.5	Tr.
87.0 - 146.3	Andesite with scattered narrow quartz str			
146.3 - 150.9	Diorite			
150.9 - 157.0	porphyritized diorite			
157.0 - 164.5	Fine grained gray porphyry			
164.5 - 194.9	Diorite			
194.9 - 200.0	Andesite, fractured & silicified & with fine pyrite	667	5.1	Tr
200.0 - 297.0	Andesite, some narrow quartz str & scattered crystals of pyrite			
297.0 - 300.0	Diorite slight alteration, numerous narrow quartz str very sparse pyrite			
	300.0 - 305	668.	5.0	Tr
	305.0 - 310	669	5.0	Tr
	310.0 - 315	670	5.0	Tr
	315.0 - 320.	671	5.00	Tr
331 - 346	Andesite threaded with quartz & scattered cubes of coarse pyrite			
346	End of Hole			
	Angle at 196' - 43°			
	" " 346' - 38°			

9-C-28

Prop. / Neepawa Island Hole No. 53
 Location..... Lat. 2060 Dep. 4600 Bearing North
 Coordinates..... Destination.....
 Length..... 333ft. Dip. collar..... 47°ft.....ft.....ft.....ft.....
 Date started Oct 20 1952 Date finished Oct. 24th 1951 Logged by S. M. Arnett.
 Drilled by Patricia Drilling Co.

Footage	DESCRIPTION	Sample No.	Core Length ft.	Gold Oz.	Oz
0 - 15	Casing				
15 - 29.7	Agglomerate				
29.7 - 31.9	Coarse greenstone				
31.9 - 34.6	Similar to above but with a few narrow quartz str & scattered cubes of coarse pyrite	675	2.7	Nil	
34.6 - 37.3	Coarse greenstone				
37.3 - 38.5	quartz str, well min. with pyrite	676	1.2	0.01	
38.5 - 52.0	Coarse greenstone				
52.0 - 57.0	Greenstone, sheared & brecciated				
57.0 - 176.6	narrow quartz str & considerable pyrite	677	5.0	Tr	
176.6 - 181.2	Variegated andesitic greenstone, few quartz str & sparse pyrite				
181.2 - 183.8	andesite with scattered coarse pyrite & few quartz stringers	678	4.6	Tr.	
183.8 - 185	Similar to above but more quartz & pyrite	679	2.6	Tr	
185 - 197.9	Andesite				
	Fine grained quartz porphyry, threaded with quartz, scattered pyrite				
	185 - 190	680	5.0	Tr	
	190 - 195	681	5.0	0.01	
	195 - 197.9	682	2.9	Tr	
197.9 - 201.4	Andesite with narrow quartz str & sparse coarse pyrite	683	3.5	0.01	
201.4 - 209.1	Grey porphyry				
209.1 - 214.5	Andesite				
214.5 - 236	Grey porphyry				
236 - 238.6	Andesite				
238.6 - 244.6	Andesite, narrow quartz str & scattered coarse pyrite	684	3.0	0.02	
	238.6 - 241.6	685	3.0	0.02	
	241.6 - 244.6				
244.6 - 252.5	Andesite				
252.5 - 255	Andesite with scattered coarse pyrite				
255 - 258.0	quartz, no sulphides	686	5.5	Tr	
258.0 - 271.5	Variegated andesitic greenstone				
271.5 - 280.0	Andesite, scattered quartz str & sparse pyrite	688	3.5	0.01	
	271.5 - 276	689	4.0	Tr	
	276.0 - 280.0				
280.0 - 302.0	Andesite with quartz str & fine pyrite Variegated andesitic greenstone				
302.0 - 304.0	Andesite with quartz str & fine pyrite	690	2.0	Tr	
304.0 - 319.7	Coarse andesite				
319.7 - 321.2	Andesite with quartz str & fine pyrite	691	1.5	Tr	
321.2 - 333	Andesite, some quartz threading but no sulphides				
333	End of hole				

Angle at 300' --- 35°

9-8-98

Prop y.....NEKAWA ISLAND.....Hole No.....154
 Location.....Lat. 2395.....Dep. 3800.....Bearing S. 25° W
 Coordinates.....Destination.....
 Length.....390.....ft. Dip. collar.....46°.....ft.....ft.....ft.....ft.....
 Date started.....Oct. 27th 1951.....Date finished.....Oct. 29th 1951.....Logged by.....B. M. Arnett.
 Drilled by; Patricia Drilling Co.

Footage	DESCRIPTION	Sample No.	Core Length ft.			
0 - 20	Casing					
20 - 63.5	Davite, scattered barren quartz str.					
63.5 - 150	Andesite, a little fine pyrite					
150 - 162	Coarse andesite, altered & chloritized					
162 - 170	Similar to above but with scattered quartz str and sparse pyrite	162 - 166 166 - 170	692 4.0 693 4.00		Tr Tr	
170 - 251.1	Andesite					
251.1 - 258.6	Chlorite schist with narrow quartz stringers & sparse pyrite	251.1 - 255.0 255.0 - 258.6	694 3.9 695 3.6		Tr Tr	
258.6 - 333	Andesite					
333 - 341.1	Silicified & brecciated andesite, very sparse pyrite	333.0 - 337 337 - 341.1	696 4.0 697 4.1		Tr Tr	
341.1 - 353	Andesite, slightly sheared					
353 - 390	Andesite, fine grained & massive					
390	End of Hole					
	Angle at 200' - 37°					
	" " 360. - 30°					
	Patricia Drilling Co.					

9-8-96

Property: NEEPAWA ISLAND Hole No. 83

Location: Lat. 2522 N Dep. 2655 E. Bearing N.30E

Coordinates: Destination:

Length: 150+ ft. Dip collar: 44° 30+ ft. ft. ft.

Date started: Dec 8th 1951 Date finished: December 9th 1951 Logged by: B. N. ARNOTT.

~~Drilled by Patricia Drilling Co.~~

Footage	DESCRIPTION	Sample No.	Core Length ft.		
0 - 7	Casing				
7 - 71	Andesitic greenstone, few narrow quartz str, no alteration or sulphides				
71.0 - 76.1	andesite with quartz & carbonate str and a little pyrite	810	8.1	0.02	
76.1 - 78.9	Highly altered andesite, carbonatized and quartz str. very sparse fine pyrite	811	2.7	0.01	
78.8 - 150.0	andesitic greenstone, few narrow quartz str no alteration or sulphides				
150	End of hole.				

angle at 130' - 41°

9-9-95

Propt. NEKPAWA ISLAND Hole No. 65

Location Lat. 1341 N Dip. 2100 M. Bearing 180°

Coordinates..... Destination.....

Length 155 ft. Dip collar 50° ft. ft. ft.

Date started Dec. 13th 1951 Date finished Dec. 14th 1951 Logged by S. M. Arnott

Footage	DESCRIPTION	Sample No.	Core Length ft.	Old
				GZ
0 - 18.	Casing			
18 - 19.7	Coarse greenstone			
19.7 - 20.9	do. with 50% quartz & sparse pyrite	820	1.2	0.02
20.9 - 27.5	Coarse greenstone			
27.5 - 28.5	ditto. with 20% quartz & sparse pyrite.	821	1.0	0.01
28.5 - 39.0	Coarse greenstone			
39.0 - 41.8	ditto becoming more altered	822	2.8	0.01
41.8 - 45.0	ditto with 40% quartz, well mineralized with pyrite & a little tourmaline	823	3.2	0.04
45.0 - 49.6	Similar to above, but less quartz & mineralization	824	4.6	0.02
49.6 - 72.9	Coarse greenstone, well fractured but very sparse pyrite			
	49.6 - 55	825	5.4	0.02
	55.0 - 60	826	5.0	0.01
	60.0 - 65	827	5.0	0.02
	65. 70.	828	5.0	tr
	70. - 72.9	829	2.9	tr
72.9 - 73.6	Highly altered greenstone with quartz str & coarse pyrite	830	0.7	0.02
73.6 - 77.5	less alteration & pyrite than above	831	3.9	0.04
77.5 - 87.5	Coarse greenstone, quartz filled fractures & very sparse pyrite			
	77.5 - 82.5	832	5.0	0.06
	82.5 - 87.5	833	5.0	0.08
87.5 - 135.6	Gradational contact with variegated andesitic greenstone			
135.6 - 143.1	Andesite with quartz str & scattered pyrite			
	135.6 - 140.0	834	4.4	0.08
	140.0 - 143.1	835	3.1	0.12
143.1 - 155	Variegated andesitic greenstone (possibly graywacke)			
155	end of hole			
	angle at 150' - 44°			
	Drilling done by: Patricia Drilling Co.			

9-9-95

Prop. NEEPAWA ISLAND Hole No. 67
 Location. Lat. 1380 N -- Dep. 1850 E Bearing 180°
 Coordinates..... Destination.....
 Length 231 ft. Dip. collar 46° ft. ft. ft. ft.
 Date started Nov 30th 1951 Date finished Jan 3rd 1952 Logged by H. M. Arnett

Footage	DESCRIPTION	Sample No.	Core Length ft.	Gold Oz.
0 - 15.0	Casing (Water 5' deep)			
15.0- 16.3	quartz porphyry			
16.3 -25.0	Dacite			
25.0 -46.5	Sheared andesite with str of fine porphyry			
46.5- 49.5	brocciated & porphyritized greenstone with quartz str & scattered coarse pyrite	349	3.0	0.02
49.5 - 55.5	quartz porphyry with quartz str, well mineralized with coarse pyrite & a little chalcopyrite.			
	49.5 - 53.0	350	3.5	0.10
	53.0 - 56.5	351	3.5	0.04
56.5 -93.1	Dacite, porphyritized in places, scattered narrow quartz str & very sparse pyrite.			
	63.4 - 64.3 Better min. & silicified	352	0.9	Nil
	73.0 - 77.5 ditto	353	5.5	Nil
	87.7 - 93.1 ditto	354	5.4	Nil
93.1 -122.0	quartz porphyry with some bands of porphyritized greenstone, scattered quartz str & very sparse pyrite			
	97.2 - 99.1 better min. & silicified	355	1.9	0.01
	102.8 -103.0 ditto	356	5.2	0.02
	108.0 -113.0 ditto	357	5.0	Tr
	113.0 118.0 ditto	358	5.0	0.02
122.0-138.0	variegated andesitic greenstone			
138.0 145.1	coarse greenstone with narrow quartz str & sparse pyrite			
	138.0 - 141.0	359	3.0	0.02
	141.0 - 146.1	360.	4.1	Tr
145.1 -147.7	Kalsper porphyry few quartz str & sparse pyrite	361	2.6	0.02
147.7- 152.5	Conglomerate			
152.5 - 231	Greywacke			
231	end of Hole			

angle at 225' --37°

Drilling done by:- Patricia Drilling Co.

9-8-98

MKEPAWA ISLAND

69

Prop / Hole No.

Location. Lat. 2266 N. Dep. 4153 E. Bearing 180°

Coordinates..... Destination.....
396 50°

Length.....ft. Dip. collar.....ft.....ft.....ft.....ft.....ft.....

Date started Jan 10th 1952 Date finished Jan 13th 1952 Logged by B. M. Arnott.

Drilled by Patricia Drilling Co.

Footage	DESCRIPTION	Sample No.	Core Length ft.	Gold (oz)	
0 - 16	Casing				
16.0-146.0	Variegated porphyritic andesite & few barren quartz str				
146.0-154.2	Gradational contact with diorite or coarse greenstone.				
154.2-162.6	Fine grained quartz porphyry				
162.6-197.3	Diorite or coarse greenstone, threaded with quartz, sparsely mineralized with coarse pyrite .	162.6 - 167.0 167.0 - 171.0 171.0 - 175 175.0 - 179.0 179.0 - 186.0 183.0 - 187.0 187.0 - 191.0 191.0 - 195.0 195.0 - 198.3	866 867 868 869 870 871 872 873 874	4.4 4.0 4.0 4.0 4.0 4.0 4.0 2.0 2.3	0.01 Tr Tr 0.28 0.01 0.28 Tr 0.01 Tr.
197.3 - 235.9	Variegated porphyritic andesite				
235.9 - 237.9	andesite with quartz str & some coarse pyrite.	875	2.0	Tr.	
237.9-277.0	Variegated coarse grained int. flow				
277.0-299.9	andesite				
299.9-324.0	Fine agglomerate, well threaded with quartz, scattered pyrite.	300.0 - 305. 305. - 310. 310. - 315 315 - 320 320 - 324	876 877 878 879 880	5.0 5.0 5.0 5.0 4.0	Tr. Tr Tr Tr Tr.
324.0 - 326.0	Diorite with quartz str & fine pyrite	881	2.0	Tr	
326.0 - 329.0	Fine grained gray porphyry	882.	3.0	Nil	
329.0 - 349.0	Diorite, chloritized & carbonatized, well threaded with quartz str, fairly well min. with pyrite	329.0 - 333. 333. - 337. 337. - 341 341 - 345 345 - 349	883 884. 885. 886 887	4.0 4.0 4.0 4.0 4.0	Nil Tr Tr Tr Tr
349 - 375.	Andesite, highly carbonatized, very sparse pyrite	349 - 355 355. 360 360 - 365 365 - 370 370- -375	888 889 890 891 892	5.0 5.0 5.0 5.0 5.0	Tr. Tr Tr Tr Tr
375 - 396	Andesite, less fratured & carbonatized, no sulphides.				
396	End of Hole				
	Angle at 180° --- 43°				
	Angle at 390° --- 34°				

Pa 11463

Pa 11462

6000 E

5800 E

5600 E

5400 E

5200 E

5000 E

4800 E

4600 E

4400 E

2000 N

BASE LINE

50

51

52

53

54

Pa 11464

Pa 11461

Pa 11461

Pa 11459

4200 E

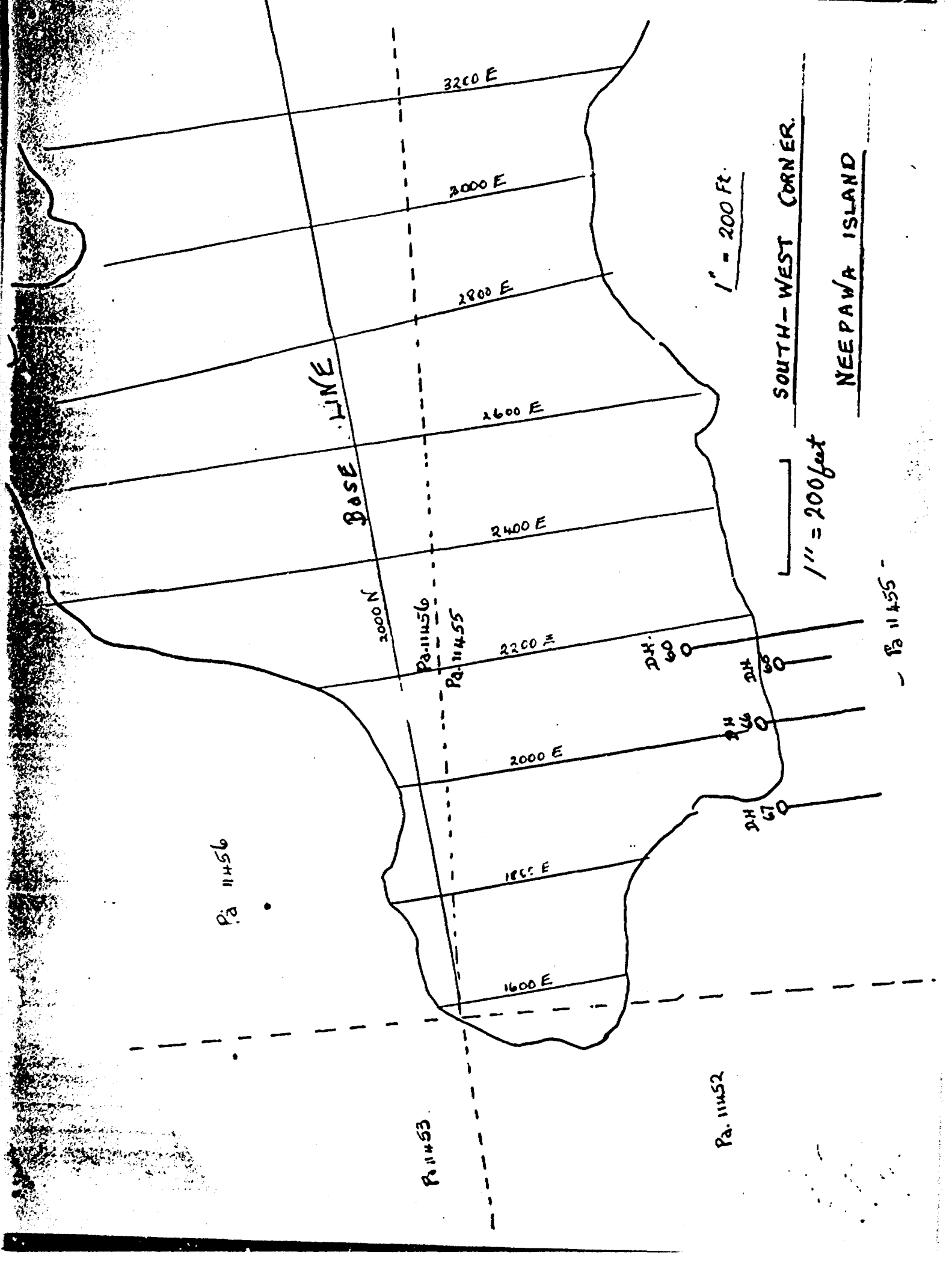
Pa 11460

NEEPAWA ISLAND

1" = 200 ft.

1" = 200 feet

- S.V. 106. -



BASE LINE

1" = 200 Ft.

SOUTH-WEST CORNER.

NEEPAWA ISLAND

1" = 200 feet

Pa. 11456

Pa. 11453

Pa. 11452

Pa. 11456

Pa. 11455

Pa. 11455

DH 60

DH 60

DH 64

DH 67

2200 E

2000 E

1800 E

1600 E

2000 N

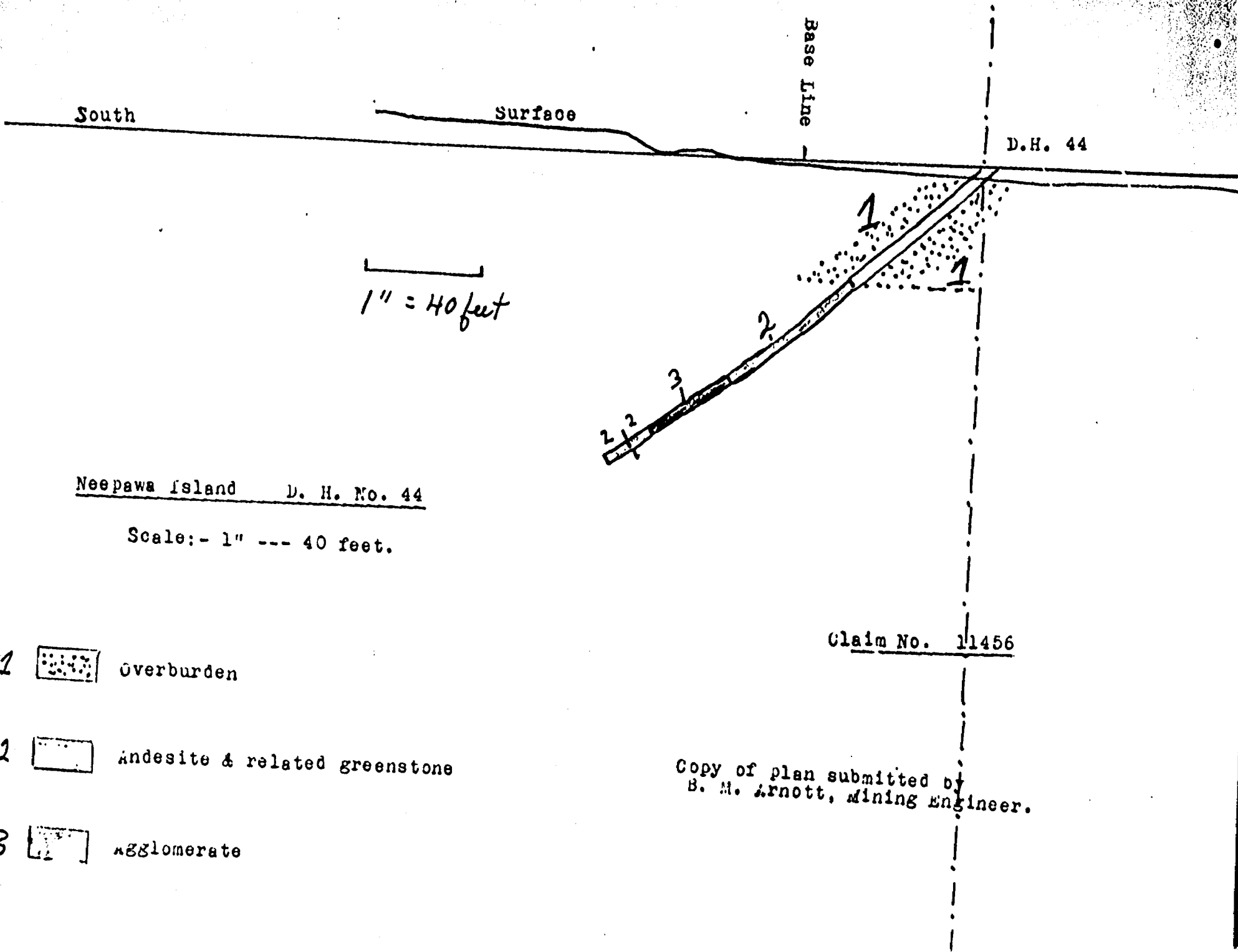
3200 E

3000 E

2800 E

2600 E

2400 E



South

Surface

Base Line


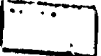

D.H. 44

1" = 40 feet

Neepawa Island D. H. No. 44

Scale:- 1" --- 40 feet.

Claim No. 11456

- 1  Overburden
- 2  Andesite & related greenstone
- 3  Agglomerate

Copy of plan submitted by
B. M. Arnott, Mining Engineer.

Copy of part of plan submitted by B. M. Arnott
Mining Engineer.

Claim P.A. 11457

Claim U.A. 11456

Island.

1" = 200 feet

South-west corner
of Neepawa Island.

D.H. 44

2000 N.

Claim P.A. 11456
Claim P.A. 11455

Claim P.A. 11459
Claim P.A. 11458
3400 E.

Claim P.A. 11458
Claim P.A. 11455

1600 E.

1800 E.

2000 E.

2200 E.

2400 E.

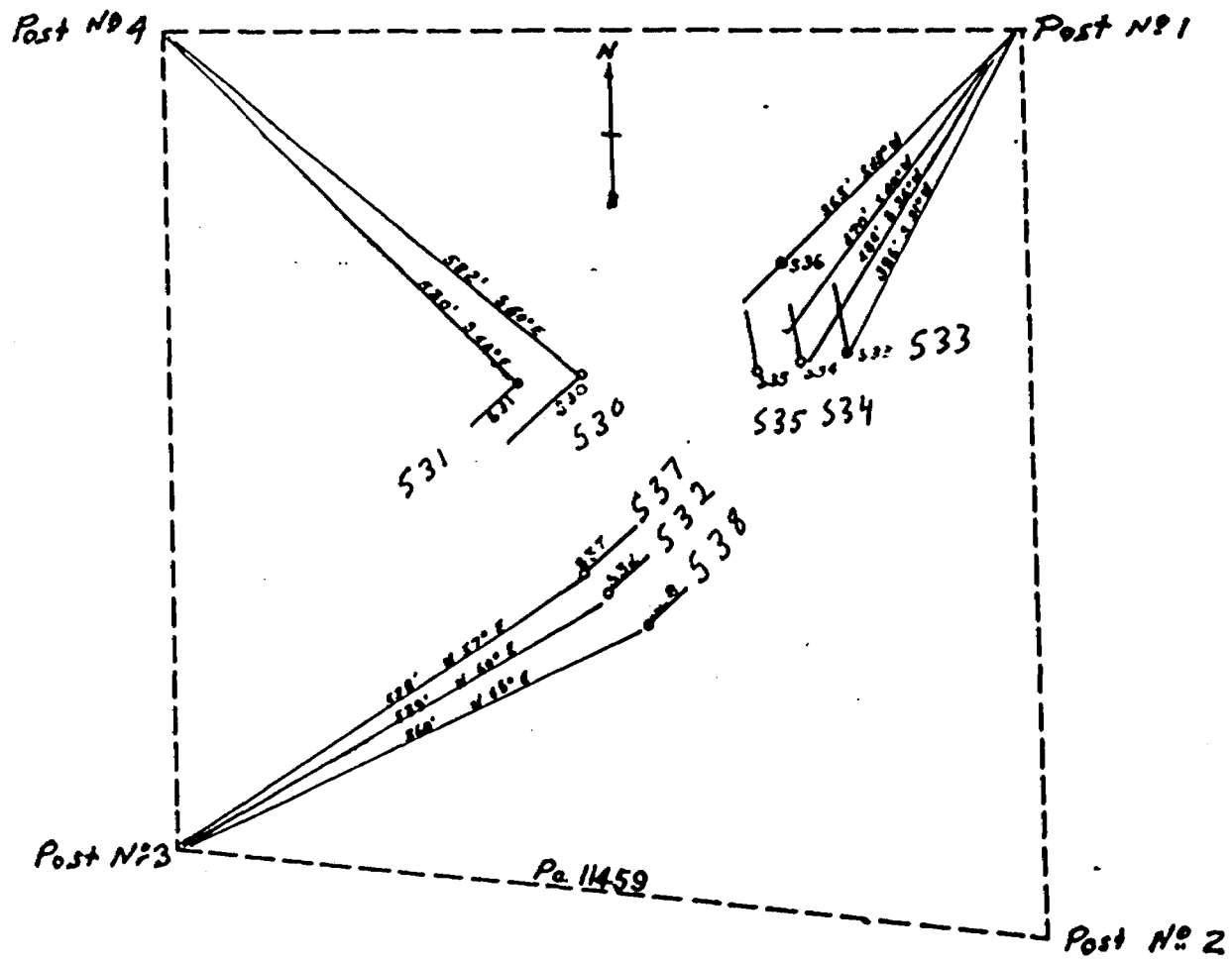
2600 E.

2800 E.

3000 E.

3200 E.

Scale 1" --- 200 feet.



Post No 4

PA. 11456

Post No 1

100' 100' W
100' 100' W



S 41 1/2

690' S 52° E
680' S 52° E
653' S 42° E
S 40
S 39
S 41

Post No 3

PA 11455

Post No 2

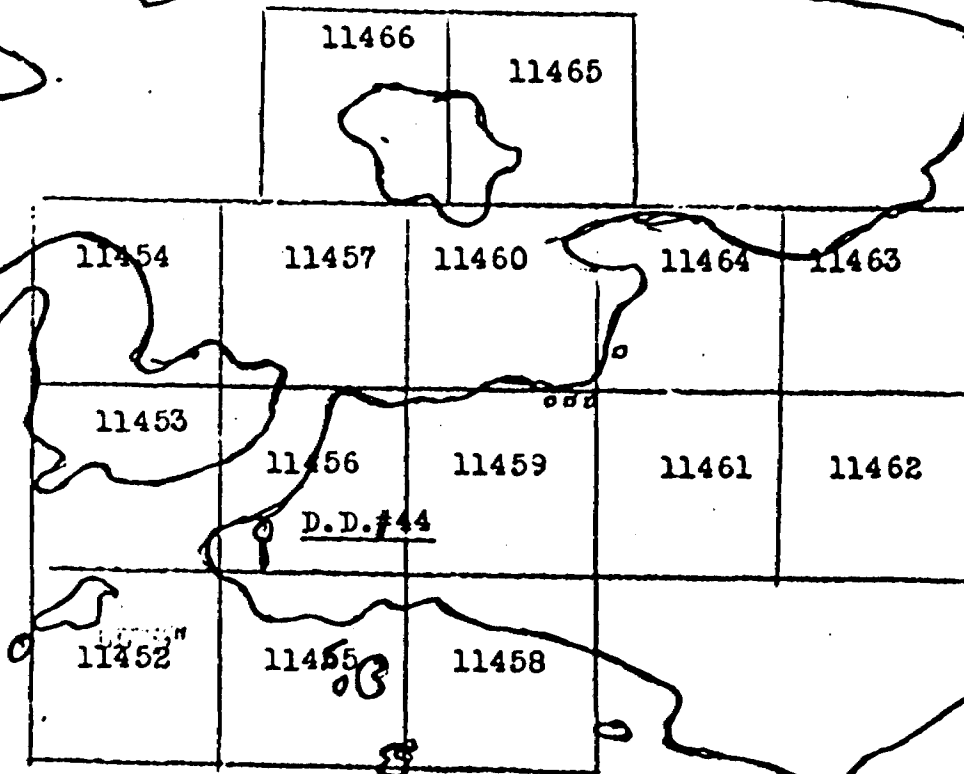
MACDONALD CLAIMS

Neepawa Island --- Minnitaki Lake.

Patricia Mining Division

Scale :- 1 inch --- $\frac{1}{2}$ Mile

$1'' = \frac{1}{2} MI$

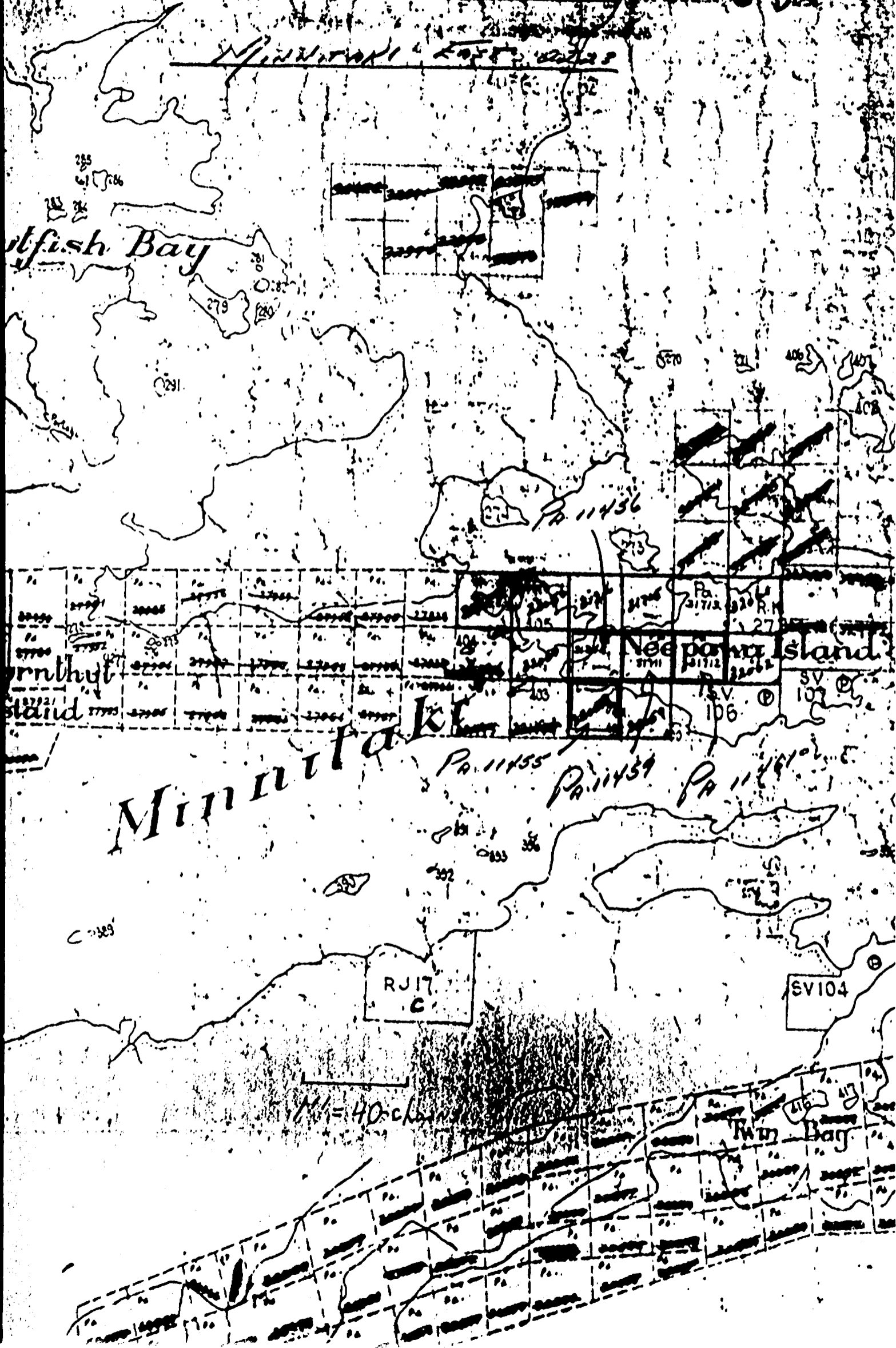


NEEPAWA
ISLAND

Minnitaki Lake.

RAN

FOR STAFF REPORT TO PLAN
M. 2283



Minnock East 22723

Wolfish Bay

Neeponet Island

Minnock Island

Minnock Bay

M-40 channel

RJ17
C

SV104

PA 11455

PA 11459

PA 11461

PA 11436

PA 11712

PA 11712

PA 11712

PA 11712

PA 11712

PA 11712

PA 11712

PA 11712

PA 11712

PA 11712

PA 11712

PA 11712

PA 11712

PA 11712

PA 11712

PA 11712

Ornthyl
stand

C-1283

SV 107

SV 106

SV 105

SV 104

SV 103

SV 102

SV 101

SV 100

SV 99

SV 98

SV 97

SV 96

SV 95

SV 94

SV 93