



52G14SE0021 52G14SE0014 VALORA LAKE

Diamond Drilling

010

Area of VALORA LAKE

Report N<sup>o</sup> 34

Work performed by: Scurry-Rainbow Oils Limited

Claim N <sup>o</sup>	Hole N <sup>o</sup>	Footage	Date	Note
PA 221019	8	103.6"	Oct/71	(1)
	9	103.6"	Oct/71	
	10	104.2"	Oct/71	
	11	103.6"	Oct/71	
PA 221017	BC-13	367'	July/73	(2)
PA 221018	BC-14	343'	Aug/73	(2)
	BC-15	597'	Aug/73	(2)
PA 46106	BC-16A	447'	Aug/73	(2)

Total: 8DH 2169'

- Notes:
- (1) 125/71 (K)
  - (1) 423/71 (PA)
  - (2) 135/73 Autopositives in NTS Drawer



THE MINING ACT - DEPARTMENT OF MINES  
DIAMOND DRILLING LOG

Start a new page for every new hole, but fill in top portion of form only on first page for each hole.

FILL IN ON EVERY PAGE

HOLE NO. 8	PAGE NO. 1
---------------	---------------

DRILLING COMPANY Scurry-Rainbow Oil Limited		COLLAR ELEVATION	BEARING OF HOLE FROM TRUE NORTH N 5° W	TOTAL FOOTAGE 103' 6"	DIP OF HOLE AT collar -60°	LOCATION OF HOLE IN RELATION TO A FIXED POINT ON THE CLAIM L 150E - 79+00N 12' East	MAP REFERENCE NO. G	CLAIM NO. 221019
DATE HOLE STARTED October 11, 1971	DATE COMPLETED October 13, 1971	DATE LOGGED 10/15/71	LOGGED BY D. R. S. Doal		ft		LOCATION (T <sub>p.</sub> , Lot, Con. OR Lat. and Long.) 49° 48' 01" 91° 13' 15"	
EXPLORATION CO., OWNER OR OPTIONEE Scurry-Rainbow Oil Limited		DATE SUBMITTED	SUBMITTED BY (Signature) 		ft		PROPERTY NAME Scurry-Rainbow Briar-Court	

FOOTAGE FROM TO		ROCK TYPE	DESCRIPTION Colour, grain size, texture, minerals, alteration, etc.	PLANAR FEATURE ANGLE °	CORE SPECIMEN FOOTAGE +	YOUR SAMPLE NUMBER	SAMPLE FOOTAGE FROM TO		SAMPLE LENGTH	ASSAYS +			
0	35' 10"	Meta gabbro	Dark-green porphyritic 9'-16' shearing - 3" chalcopyrite 13.6"-13.9" Minor pyrite, few specks chalcopyrite from 9--35- 10" - some caving @ 16' feet - 2' core lost										NIL
35' 10"	42	Metavolcanics	Light-grey - quartz stringer @ 40' - @ 450/CA										
42	50	Gabbro	Sheared - containing pyrite and minor chalcopyrite - 1' lost core										
50	73	Gabbro	Dark-green - white speckled massive										
73	85.6	Metavolcanic	Grey-green-fine-grained - quartz stringers slightly fractured Disseminated pyrite										
85.6	103' 6"	Gabbro	Dark-green - white speckled medium grained gabbro Hole completed to 103' 6"										

+ Foot measurements for foliation, bedding, schistosity, measured from the long axis of the core.

+ Additional credit available. See Assessment Work Regulation.



THE MINING ACT - DEPARTMENT OF MINES

**DIAMOND DRILLING LOG**

Start a new page for every new hole, but fill in top portion of form only on first page for each hole.

FILL IN ON EVERY PAGE

HOLE NO. 9 PAGE NO. 1

DRILLING COMPANY <b>Scurry-Rainbow Oil Limited</b>		COLLAR ELEVATION	BEARING OF HOLE FROM TRUE NORTH <b>N 30°E</b>	TOTAL FOOTAGE <b>103' 6"</b>	DIP OF HOLE AT collar   <b>-60°</b>	LOCATION OF HOLE IN RELATION TO A FIXED POINT ON THE CLAIM  <b>Line 150E 79+00N - 55'E</b>	MAP REFERENCE NO. <b>G</b>	CLAIM NO. <b>221019</b>	
DATE HOLE STARTED <b>October 14, 1971</b>	DATE COMPLETED <b>October 16, 1971</b>	DATE LOGGED <b>Oct. 17, 1971</b>	LOGGED BY <b>D. R. S. Doal</b>		ft		LOCATION (Tp., Lot, Con. OR Lat. and Long.)  <i>49° 23' 01" 91° 13' 14"</i>	PROPERTY NAME <b>Scurry-Rainbow Briar-Court</b>	
EXPLORATION CO., OWNER OR OPTIONEE <b>Scurry-Rainbow Oil Limited</b>		DATE SUBMITTED	SUBMITTED BY (Signature) <i>[Signature]</i>		ft				
					ft				

FOOTAGE		ROCK TYPE	DESCRIPTION <small>Colour, grain size, texture, minerals, alteration, etc.</small>	PLANAR FEATURE ANGLE	CORE SPECIMEN FOOTAGE +	YOUR SAMPLE NUMBER	SAMPLE FOOTAGE		SAMPLE LENGTH	ASSAYS +	
FROM	TO						FROM	TO			
0	41	Meta gabbro	Dark green, medium grained gabbro 8.2 to 16 feet shearing - 13 to 13.3 chalcopryrite, minor pyrite from 8.2 to 16 feet								
41	42	Metavolcanics	Grey-green with carbonate stringers - @ 50° to C/A								
42	70.6	Gabbro	As above - massive minor pyrite								
70.6	88.3	Metavolcanics	Grey-green - medium grained Greenstone 84--84.6".6" siliceous dyke?								
88.3	103'6"	Gabbro	Dark-green, white speckled medium grained								
			Hole completed to 103' 6"								

+ Additional credit available. See Assessment Work Reguic



DRILLING COMPANY <b>Scurry-Rainbow Oil Limited</b>		COLLAR ELEVATION	BEARING OF HOLE FROM TRUE NORTH <b>N 10° W</b>	TOTAL FOOTAGE <b>104' 6"</b>	DIP OF HOLE AT collar   <b>-55°</b>	LOCATION OF HOLE IN RELATION TO A FIXED POINT ON THE CLAIM  <b>Line 152+00E 78+00N 25' east</b>	MAP REFERENCE NO. <b>G</b>	CLAIM NO. <b>221019</b>	
DATE HOLE STARTED <b>Oct. 17, 1971</b>	DATE COMPLETED <b>Oct. 19, 1971</b>	DATE LOGGED <b>Oct. 20/71</b>	LOGGED BY <b>D. R. S. Doal</b>		ft		LOCATION (Tp., Lot, Con. OR Lat. and Long.)  <i>19° 42' 00" 91° 13' 00"</i>	PROPERTY NAME <b>Scurry-Rainbow Briar-Court</b>	
EXPLORATION CO., OWNER OR OPTIONEE  <b>Scurry-Rainbow Oil Limited</b>		DATE SUBMITTED	SUBMITTED BY (Signature) 		ft				
					ft				

FOOTAGE FROM TO		ROCK TYPE	DESCRIPTION <small>Colour, grain size, texture, minerals, alteration, etc.</small>	PLANAR FEATURE ANGLE	CORE SPECIMEN FOOTAGE +	YOUR SAMPLE NUMBER	SAMPLE FOOTAGE FROM TO		SAMPLE LENGTH	ASSAYS +	
0	104.2	Gabbro	Dark-green, coarse grained - white speckled quartz veiny 2" from 34 - 34.2" - 57-6 Shearing - 2 feet lost core - minor pyrite @ 104 - 1/8" Stringer of chalcopyrite								
			Hole completed at 104' 6"								



THE MINING ACT - DEPARTMENT OF MINES  
DIAMOND DRILLING LOG

Start a new page for every new hole, but fill in top portion of form on 1st page for each hole.

DRILLING COMPANY <b>Scurry-Rainbow Oil Limited</b>		COLLAR ELEVATION	BEARING OF HOLE FROM TRUE NORTH <b>N 10° W</b>	TOTAL FOOTAGE <b>103.6"</b>	DIP OF HOLE AT COLLAR	LOCATION OF HOLE IN RELATION TO A FIXED POINT ON THE CLAIM  <b>Line 152+00E 78+36N 25' east</b>	MAP REFERENCE NO. <b>G</b>	CLAIM NO. <b>221019</b>	
DATE HOLE STARTED <b>Oct. 20, 1971</b>	DATE COMPLETED <b>Oct. 22, 1971</b>	DATE LOGGED <b>Oct. 22/71</b>	LOGGED BY <b>D. R. S. Doal</b>		ft		LOCATION (T.p., Lot, Con. OR Lot. and Long.)  <i>29- 41-41" 91° 3- 00"</i>	PROPERTY NAME <b>Scurry-Rainbow Briar-Court</b>	
EXPLORATION CO., OWNER OR OPTIONEE <b>Scurry-Rainbow Oil Limited</b>		DATE SUBMITTED	SUBMITTED BY (Signature) <i>[Signature]</i>		ft				
					ft				

FOOTAGE		ROCK TYPE	DESCRIPTION <i>Colour, grain size, texture, minerals, alteration, etc.</i>	PLANAR FEATURE ANGLE +	CORE SPECIMEN FOOTAGE +	YOUR SAMPLE NUMBER	SAMPLE FOOTAGE		SAMPLE LENGTH	ASSAYS +	
FROM	TO						FROM	TO			
0	103.6	Meta Gabbro	Dark-green - grey - porphyritic massive medium to coarse grained shearing 40--43' - 1 foot lost core - disseminated pyrite with minor chalcopyrite @ 60-61 feet								
			Hole completed to 103.6 feet								NIL

\* For features such as foliation, bedding, schistosity, measured from the long axis of the core. + Additional credit available. See Assessment Work Regul-

L140E

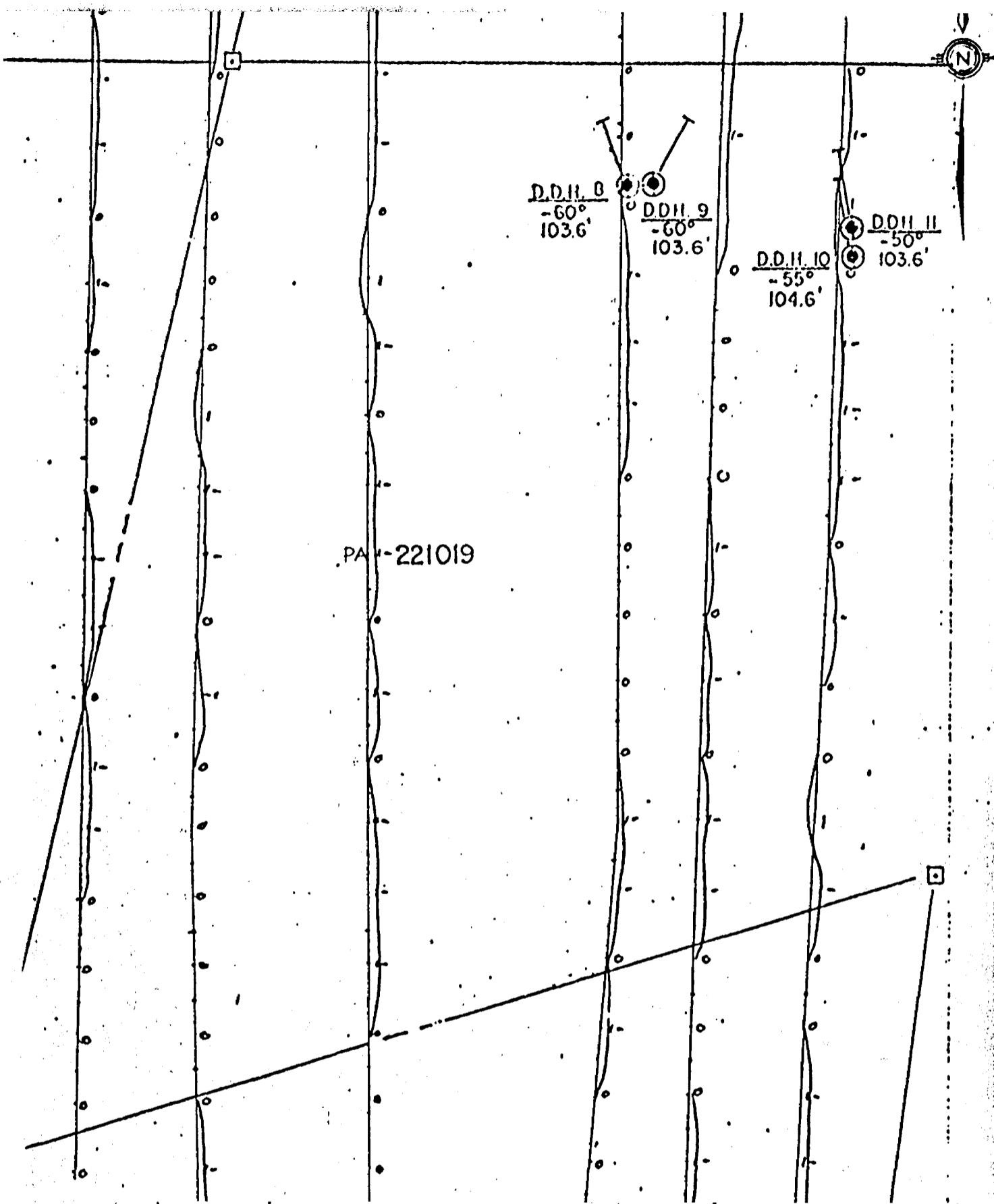
L142E

L144E

L148E

L150E

L152E



PA 221019

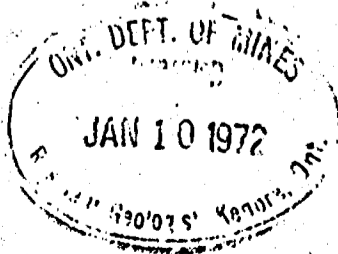
SCURRY-RAINBOW OIL LIMITED

CLAIM PA 221019  
D.D.H. 8, 9, 10, 11

BRIARCOURT OPTION  
STURGEON LK. ONT.

SCURRY-RAINBOW OIL LIMITED

FILE NO.  
CLAIM PA 221019



# Drill Hole Log

COMPANY Scurry-Rainbow Oil Limited

PROPERTY Briar Court

Section No.

HOLE No. 13

Started July 27	Bearing S20°W	Lat. 85+00N	Casing EL	Logged by D. R. Doal	Date
Completed July 31	Angle from Horiz. -50°	Dep. 139+00E	Bottom EL	Remarks	
Driller Midwest	Length 367'	Location C1221017	Level		

Footage		Interval	RECOVERY		Graphic Log	DESCRIPTION	Sample No.	From-To	Interval	ASSAY	
From	To		Ft.	%							
0	38					Overburden-Boulders, sand					
38	50					Highly oxidized zone mainly pebbles- Fe staining					
50	60					Agglomerate large Fragments angular					
60	71					Siliceous felsite dykes					
71	75					M. vol. broken, sheared					

# Drill Hole Log

COMPANY Scurry-Rainbow Oil Limited      PROPERTY Briar Court      Section No. \_\_\_\_\_      HOLE No. 13

Started July 27	Bearing S20°W	Lat. 85+00N	Collar EL	Logged by D. R. Doal	Date
Completed July 31	Angle from Hertz 50°	Dep. 139+00E	Bottom EL	Remarks	
Driller Midwest	Length 367'	Location C1 221017	Level		

Footage		Interval	RECOVERY		Graphic Log	DESCRIPTION	Sample No.	From-To	Interval	ASSAY
From	To		Ft.	%						
75	94				M. Vol. brecciated iron stained					
94	168				As above - Pyrite in vugs					
168	172				Highly siliceous section minor pyrite					
172	186				Sheared M. volcanics red alteration 184-186 light green mottled					
186	252				Agglomerate brecciated sheared					



# Drill Hole Log

COMPANY Scurry-Rainbow Oil Limited

PROPERTY Briar Court

Section No.

HOLE No. 13

Started July 27	Bearing S 20° W	Lat. 85+00N	Collar EL	Logged by D. R. Doal	Date
Completed July 31	Angle from Horiz. -50°	Dep. 139+00E	Bottom EL	Remarks	
Driller Midwest	Length 367	Location C 221017	Level		

Footage		Interval	RECOVERY		Graphic Log	DESCRIPTION	Sample No.	From-To	Interval	ASSAY
From	To		Ft.	%						
252	264					Mafic-dark green pyritized				
264	268					Dyke siliceous greyish green				
268	321					Mafic volcanics @ 280 1 ft. qtz stringers				
321	345					Sheared M. volc - predominate felspar redish 346-347				
345	367					Fine grained M. vol. becoming coarser grained toward end of hole.				
367 ✓						END OF HOLE				

# Drill Hole Log

COMPANY Scurry-Rainbow Oil Limited

PROPERTY Briar Court

Section No.

SOLE No. 14

Started August 1	Bearing South	Lat. 36+50N	Collar EL.	Logged by D. R. Doal	Date
Completed August 4, 1973	Angle from Horiz. -60°	Dep. 144+00E	Bottom EL.	Remarks	
Driller Midwest	Length 343'	Location 221018	Level		

Footage		Interval	RECOVERY		Graphic Log	DESCRIPTION	Sample No.	From-To	Interval	ASSAY		
From	To		Ft.	%						Ag	Gr	Tr
0	13					Overburden boulders sand						
13	18					Intr. mafic minor cpy and pyrite	11864	14-18	4	Tr	.12	.97
18	23					Intr as above sections agglomeritic - pyrite little cpy.	11865	18-23	5		.010	.56 .25
23	38					Porphyritic rhyolite pyrite and cpy in minor am'ts (35'-38')	11866	34'6"-37'	2'6"	Tr	.06	.07
38	114					M. volc - agglomerate sections 80-84 pyrite	11854	79-84	5		.020	.72 .20 .005
						Cpy - 98'6"-99 felsite dyke	11867	89-94	5	Tr	.08	.37
						103-105 cherty tuff section dark-banded	11868	94-97	3		.010	.54 .23
						pyrite	11855	99-102.3'	3'3"		.010	.12 .08 .01

# Drill Hole Log

COMPANY Scurry-Rainbow Oil Limited

PROPERTY Briar Court

Section No.

HOLE No. 14

Started August 1	Bearing South	Lat. 86+50N	Collar EL	Logged by D. R. Doal	Date
Completed August 4, 1973	Angle from Horiz. -60°	Dep. 144+00E	Bottom EL	Remarks	
Driller Midwest	Length 343'	Location 221018	Level		

Footage		Interval	RECOVERY		Graphic Log	DESCRIPTION	Sample No.	From-To	Interval	ASSAY			
From	To		Ft	%						Au	Ag	Cu	Zn
							11856	102'3"-106'3'9"	4'	.010	.16	.15	.01
							11857	106-110	4'	.010	.16	.54	.005
							11858	112'6"-117'4'6"	5'	Tr	.14	.06	.005
114	121				Dark green M. volc. cpy pyrite po		11859	117-123	6'	Tr	.14	.19	.005
121	141'6"				M. Volc. with agglomerate sections - pyrite minor cpy		11860	123-128	5	Tr	.18	.14	.005
							11861	128-133'9"	5'9"	Tr	.14	.08	.005
							11862	133'9"-136'3" 2'4"	2'4"	Tr	.12	.18	.01
141'6"	147				Dark Green chloritic M. volc. some massive sections po with cpy and pyrite 146-146'6" qtz stringer		11863	141'6"-147'4" 5'10"	5'10"	.010	.20	.87	.02
												Ni-.04	
147	159				Agglomerate								

# Drill Hole Log

COMPANY Scurry-Rainbow Oil Limited      PROPERTY Briar Court      Section No. \_\_\_\_\_      HOLE No. 17

Started August 1      Bearing South      Dip 86+50 N      Collar EL \_\_\_\_\_      Logged by D. R. Doal      Date \_\_\_\_\_  
 Completed August 4, 1973      Angle from Horiz. -60°      Dep. 144+00E      Bottom EL \_\_\_\_\_      Remarks \_\_\_\_\_  
 Driller Midwes.      Length 343'      Location 221018      Level \_\_\_\_\_

Footage		Interval	RECOVERY		Graphic Log	DESCRIPTION	Sample No.	From-To	Interval	ASSAY
From	To		FL	%						
159	160'6"				Dyke fine grained green					
160'6"	259				Int. mafic volc. agglomerate sections Calcite veining local shearing minor pyrite - cpy 190-191 light grey dyke Rhyolite 253-256 light grey dyke Rhyolite					
259	297				Light green volc. fine grained dacite? Calcite veining - not mineralized					
297	342				Int. mafic minor pyrite					
343	V				End of Hole					

# Drill Hole Log

COMPANY Scurry-Rainbow Limited      PROPERTY Briar Court      Section No.      HOLE No. 15

Started August 5	Bearing South	Lat. 88+50N	Collar El.	Logged by D. R. Doal	Date
Completed August 10	Angle from Horiz. -60°	Dep. 144+00E	Bottom EL	Remarks	
Driller Midwest	Length 597'	Location 221018	Level		

Footage		Interval	RECOVERY		Graphic Log	DESCRIPTION	Sample No.	From-To	Interval	ASSAY	
From	To		FL	%							
0	43					Overburden Boulders sand, gravel					
43	50					Agglomerate-minor pyrite.					
50	53					Dark-grey-black-dyke fine-grained					
53	68'6"					Coarse grained intr. mafic inc. calcite veining					
68'6"	70'6"					Agglomerate					

# Drill Hole Log

COMPANY Scurry-Rainbow Oil Limited

PROPERTY Briar Court

Section No.

HOLE No. 15

Started Aug. 5	Bearing South	Lat. 88+50N	Collar EL.	Logged by D. R. Doal	Date
Completed August 10	Angle from Horiz.	Dep. 144-00E	Bottom EL	Remarks	
Driller Midwest	Length 597'	Location 221018	Level		

Footage		Interval	RECOVERY		Graphic Log	DESCRIPTION	Sample No.	From-To	Interval	ANAL		
From	To		Ft.	%						As	Fe	SiO <sub>2</sub>
70'6"	93'6"					Int. mafic vol with agglomerate sections, large fragments felspar						
93'6"	100'					Brown grey-biotite schist calcite stringers						
100	157					Int. meta volc with agglomerate or brecciated sections mineralized cpy-py 146-157	11881	146-152	6'	.010	.26	.09
							11882	152-157	5'	Tr	.12	.06
157	183					Sheared meta volc. light banded tuffaceous to 103 speck Cpy						
183	194					Highly siliceous, fine grained banded tuff? - rhyolite mineralized Po, Cpy-Py	11883	185-189	4'	Tr	.08	.20

# Drill Hole Log

COMPANY Scurry-Rainbow Oil Limited      PROPERTY Briar Court      Section No.      HOLE No. 15

Started August 5	Bearing South	Loc 88+50 N	Collar El.	Logged by D. R. Doal	Date
Completed August 10	Angle from Horiz. -60	Dep. 144 - 0 E	Bottom EL	Remarks	
Driller Midwest	Length 597'	Location 221013	Level		

Footage		Interval	RECOVERY		Graphic Log	DESCRIPTION	Sample No.	From-To	Interval	ASSAY		
From	To		Ft.	%						Au	Ag	Cu
194	197					Silic. sheared rhyolite - minor cpy						
197	223					Brecciated vol. minor pyrite cpy.	11884 201'6" - 207 5'6" Tr			.04	.05	
							11885 214'6" - 217 2'6" Tr			.06	.07	
223	239					Grey - green siliceous brecciated rhyolite						
239	300					Intr. mafic green grey calcite veining becoming coarser 285-300						
300	400					Intrusive med. grained gabbro? with sections of felsic agglomeratic minor pyrite cpy.						

# Drill Hole Log

COMPANY Scurry-Rainbow Oil Limited

PROPERTY Briar Court

Section No.

HOLE No. 15

Started August 5	Bearing South	Lat. 88 + 50 N	Collar EL	Logged by D. R. Doal	Date
Completed August 10	Angle from Horiz. -60	Dep. 144 - 00 E	Bottom EL	Remarks	
Driller Midwest	Length 597'	Location 221013	Level		

Footage		Interval	RECOVERY		Graphic Log	DESCRIPTION	Sample No.	From-To	Interval	ASSAY		
From	To		Ft.	%						Ag	Al	Ca
400	408				Mafic massive, calcite veining - shearing 402-404							
408	416				(agglomerate) - rhyolite breccia?							
416	444				Intr. mafic volc. - sheared pyrite							
444	451				Mafic with agglomerate sections							
451	466				Intr. mafic mineralized cpy - py.	11886	451-456	5'	Tr	.04	.04	
						11887	460-466	6'		.010	.34	.28



# Drill Hole Log

COMPANY Scurry-Rainbow Oil Limited

PROPERTY Briar Court

Section No.

HOLE No. 15

Started August 5	Bearing South	Lat. 88 + 50 N	Collar El.	Logged by D. R. Doal	Date
Completed August 10	Angle from Horiz. -60	Dep. 144 + 00 E	Bottom EL	Remarks	
Driller Midwest	Length 597'	Location 221018	Level		

Footage		Interval	RECOVERY		Graphic Log	DESCRIPTION	Sample No.	From To	Interval	ASSAY		
From	To		Ft.	%						Au	Ag	Cu
466	516					As above - minor pyrite - cpy	118	472-476'6"	4'6"	Tr	.16	.18
516	597					Intr- mafic coarse fine grained sections to end of hole minor pyrite cpy.						
597✓						End of Hole						

# Drill Hole Log

COMPANY Scurry-Rainbow Oil Limited PROPERTY Briar Court Section No. \_\_\_\_\_ HOLE No. 15A

Started August 12, 1973 Bearing South Lat. 85+40 N Collar EL \_\_\_\_\_ Logged by D. R. Doal Date \_\_\_\_\_  
 Completed August 21, 1973 Angle from Horiz. -60° Dep. 156 + 00 E Bottom EL \_\_\_\_\_ Remarks \_\_\_\_\_  
 Driller Midwest Length 447' Location CL 46106 Level \_\_\_\_\_

Footage		Interval	RECOVERY		Graphic Log	DESCRIPTION	Sample No.	From-To	Interval	ASSAY
From	To		Ft.	%						
0	76				Overburden Bounders sand gravel					
76	197				Intrusive dark green greenstone @ 134' 3' qtz vein					
197	200				Shearing as above					
200	213				Light grey - greenish grey greenstone?					
213	225				Intr. dark green finer grained greenstone					

# Drill Hole Log

COMPANY Scurry-Rainbow Oil Limited

PROPERTY Briar Court

Section No.

HOLE No. 16A

Started August 12, 1973	Bearing South	Lat. 85+40 N	Collar EL	Logged by D. R. Doal	Date
Completed August 21, 1973	Angle from Hertz. -60°	Dep. 156 + 00 E	Bottom EL	Remarks	
Driller Midwest	Length 447'	Location CL 46106	Level		

Footage		Interval	RECOVERY		Graphic Log	DESCRIPTION	Sample No.	From-To	Interval	ASSAY		
From	To		Ft.	%						Au	Ag	Cu
225	227					Light green grey meta volcanics calcite veining // to core axis						
227	293					Intr. mafic dark green @ 278 2" band cpy pyrite Dyke - light grey felsic 286-286'6"						
293	305					Dark green fine grained greenstone sections coarser grained meta-gabbro? Chloritic, highly magnetic with Po. Cpy Py	11889	297-301	4'	Tr	.10	.95
							11890	301-306	5'	Tr	.14	.63
305	447					Intr. med gabbro fine coarser grained not mineralized						
447 ✓						End of Hole						

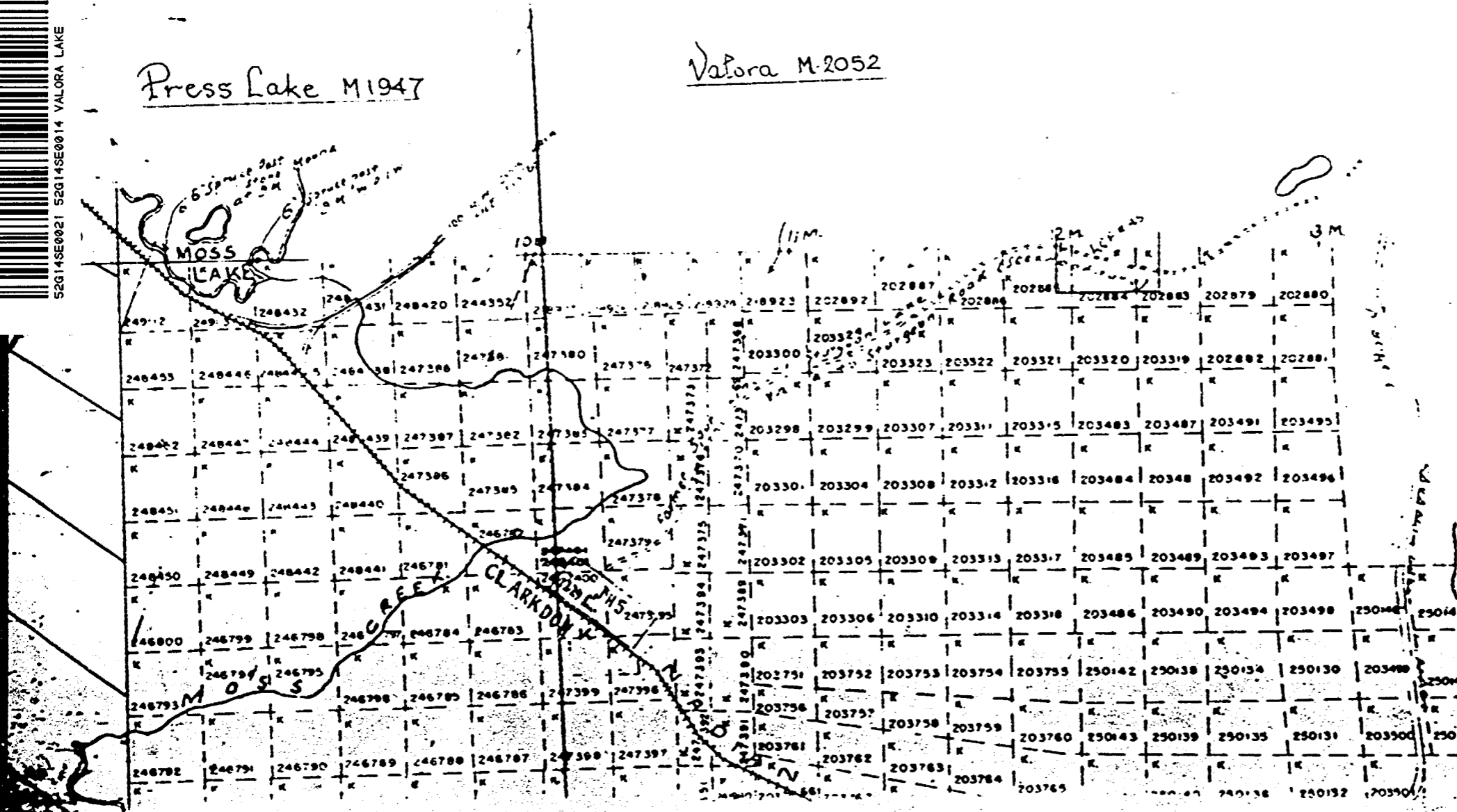
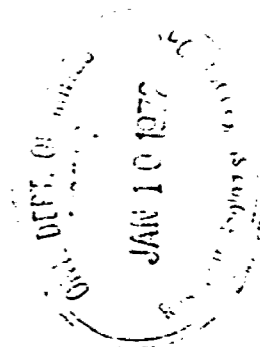
900

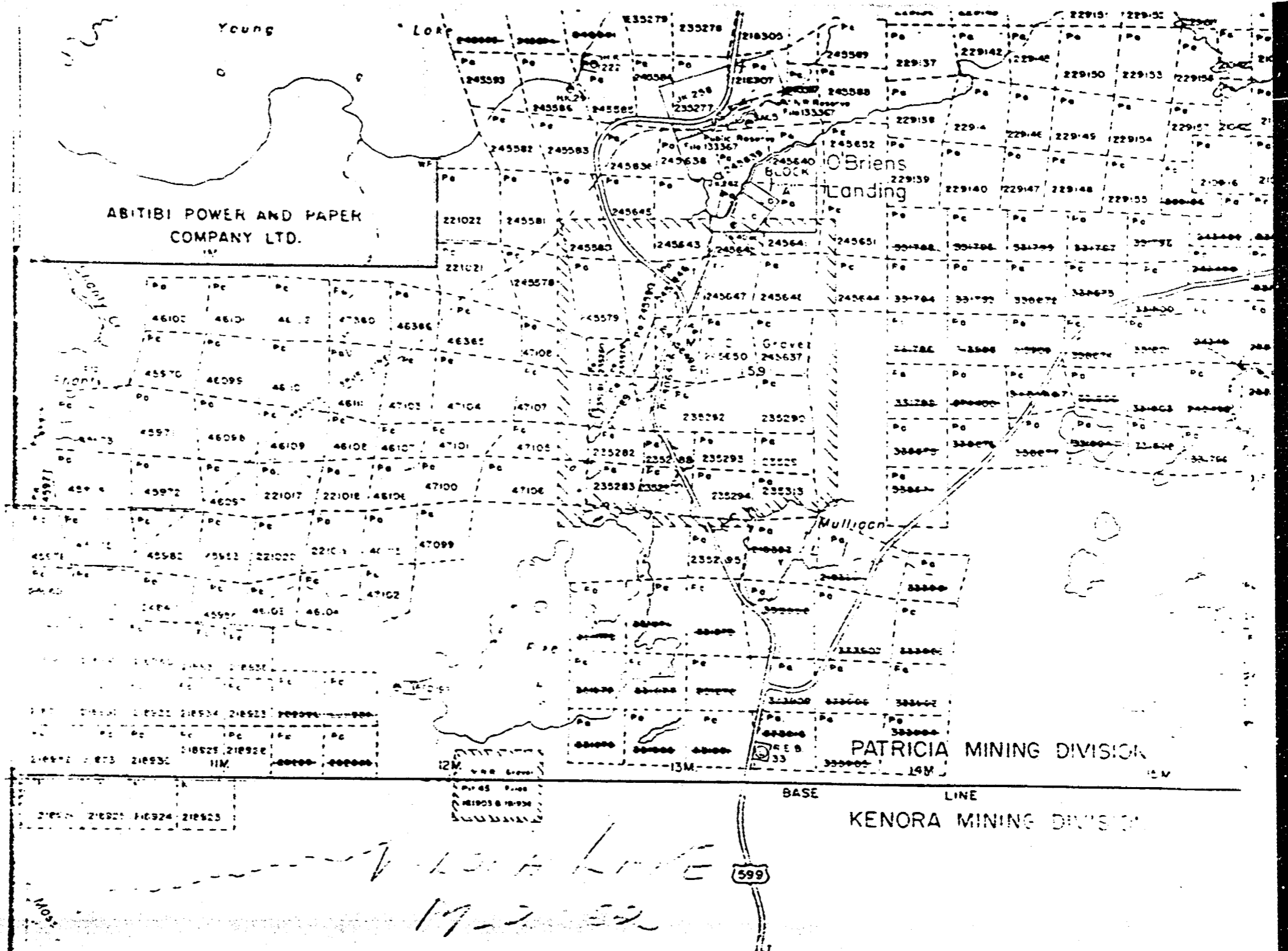


52G14SE0021 52G14SE0014 VALORA LAKE

Press Lake M1947

Valora M-2052





ABITIBI POWER AND PAPER  
COMPANY LTD.

O'Briens  
Landing

Mulligan

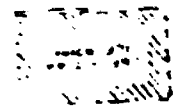
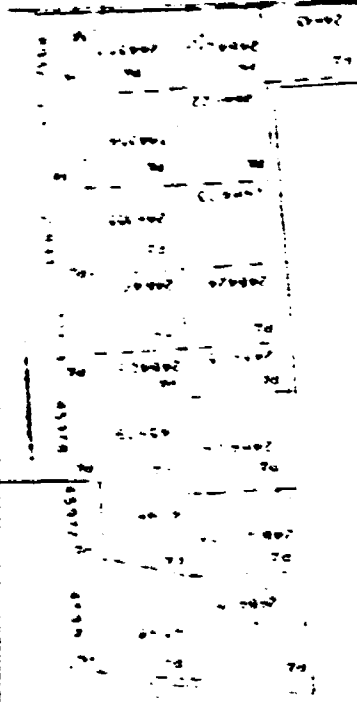
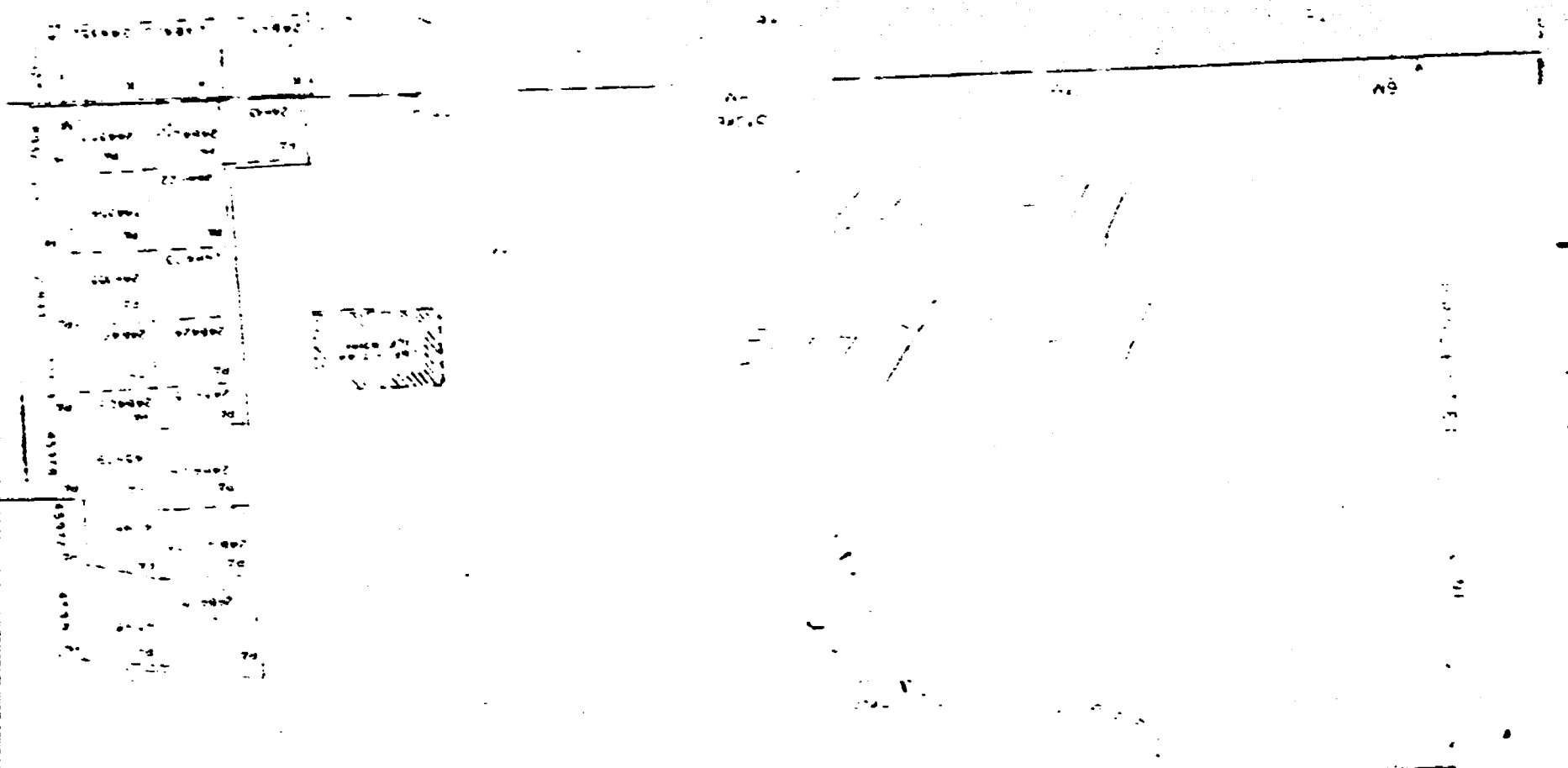
PATRICIA MINING DIVISION

KENORA MINING DIVISION

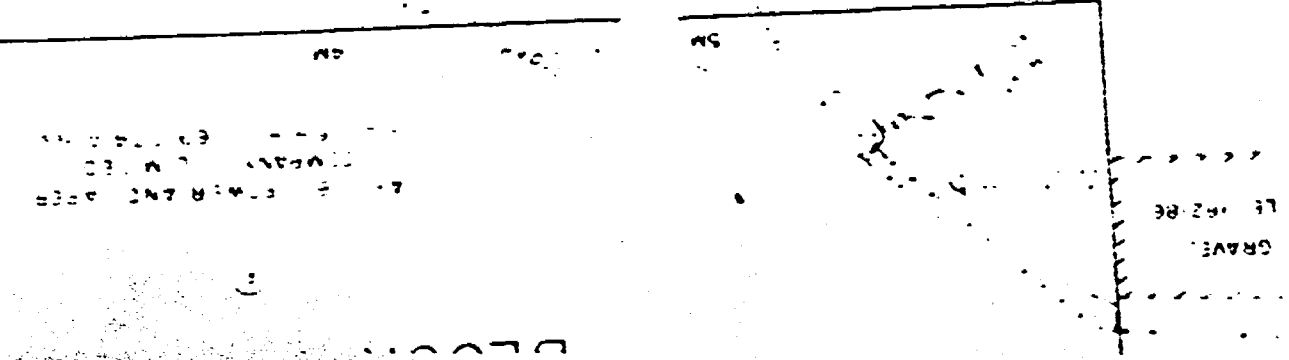
599

*Handwritten signature and date*  
17-2-59

1405



4-31



GRAVE  
LE 102 RE

**KENORA**  
MINING DIV.  
**RECEIVED**  
NOV 29 1971  
8:10:10 PM



S. Upt of Surgeon Lake 2266  
Valora & Unoka M-2052

A separate form is required for each type of work to be recorded.

**THE MINING ACT REPORT OF WORK**

To the Recorder of... Kenora ..... Mining Division

I, ..... Scurry-Rainbow Oil Limited ..... T-299  
name of Recorded Holder Miner's Licence  
..... 709 - 8th Avenue S.W., Calgary 2, Alberta  
Post Office Address

do hereby report the performance of ... 1240' - 6" ... days of .. Diamond Drilling ..  
not before reported to be applied on the following contiguous claims  
→ 305 ← type of work  
Valora M-2052

V4U

Claim No.	Days	Claim No.	Days	Claim No.	Days
K218923	60				
K218924	60				
K218925	60				
K218926	60				
K218927	60				

~~Valora & Unoka M-2052~~

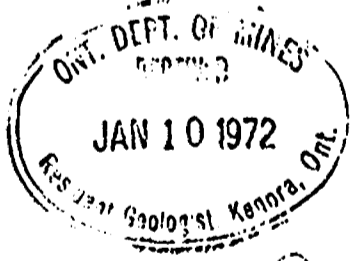
All the work was performed on Mining Claim (s) PA249109, PA45982, PA221021, K-249112, K-248431...  
(In the case of geological and/or geophysical survey (s) where more than 18 claims are involved attach a schedule)

**READ CAREFULLY: THE FOLLOWING INFORMATION IS REQUIRED BY THE MINING RECORDER.**

- For Manual Work, Stripping or Opening up of Mines, Sinking Shafts or Other Actual Mining Operations - Names and addresses of the men who performed the work and the dates and hours of their employment.
- For Diamond and other Core Drilling - Footage, No. and angle of holes and diameter of core. Name and address of owner or operator of drill. Dates when drilling was done. Signed core log and sketch in duplicate.
- For Compressed Air or Other Power Driven or Mechanical Equipment  
Type of drill or equipment. Names and addresses of men engaged in operating equipment and the dates and hours of their employment.
- For Power Stripping - Type of equipment. Name and address of owner or operator. Amount expended. Dates on which work was done. Proof of actual cost must be submitted within 30 days of recording.
- With each of the above types of work sketches are required to show the location and extent of the work in relation to the nearest claim post. In the case of diamond or other core drilling the sketch must be submitted in duplicate.
- For Geological and Geophysical Survey - The names and addresses of men employed as well as dates. Type of instrument used in the case of geophysical survey. Reports and maps in duplicate must be filed with the Minister within 60 days of recording.
- For Land Survey - the name and address of Ontario Land surveyor.

The Required Information is as Follows: (Attach a list if this space is insufficient)

SEE ATTACHED



Date ... November 8, 1971 .....  
Signature of Recorded Holder or Agent

**The Mining Act  
Certificate Verifying Report of Work**

I, ..... Don Daal .....  
709 - 8th Avenue S.W., Calgary 2, Alberta  
(Post Office Address)

- hereby certify:
- That I have a personal and intimate knowledge of the facts set forth in the report of work annexed hereto, having performed the work or witnessed same during and/or after its completion.
  - That the annexed report is true.

Dated .. November 8, 1971 .....  
Signature

K248431

THE PENALTY FOR MAKING A FALSE STATEMENT IN THIS REPORT AND/OR CERTIFICATE IS \$500. OR SIX MONTHS IMPRISONMENT OR BOTH

Required information to accompany 'Mining Act Report of Work' Scurry-Rainbow Oil

Limited submission dated November 8, 1971.

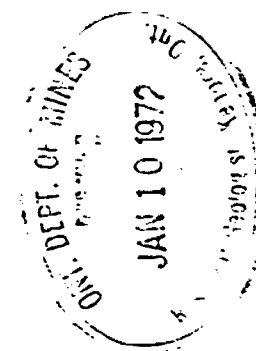
DRILL #	FOOTAGE	/ HOLE	CORE DIA.	DATES	NAME/ADDRESS
K249112 1 Kenora	101.' - 0"	- 55°	7/8" XRP	Sept. 16 - 18	S.R.O. 709 - 8th Avenue S.W.
2	26.' - 0"	- 50°	7/8" XRP	Sept. 19 - 20	S.R.O. 709 - 8th Avenue S.W.
3	102.' - 6"	- 55°	7/8" XRP	Sept. 21 - 23	S.R.O. 709 - 8th Avenue S.W.
4	101.' - 6"	- 90°	7/8" XRP	Sept. 24 - 25	S.R.O. 709 - 8th Avenue S.W.
K248431 5 Kenora	103.' - 0"	- 55°	7/8" XRP	Sept. 27 - 29	S.R.O. 709 - 8th Avenue S.W.
K248431 6 Kenora	101.' - 0"	- 55°	7/8" XRP	Sept. 30 - Oct. - 2	S.R.C. 709 - 8th Avenue S.W.
7	103.' - 6"	- 55°	7/8" XRP	Oct. 6 - 9	S.R.O. 709 - 8th Avenue S.W.
8	103.' - 6"	- 60°	7/8" XRP	Oct. 11 - 13	S.R.O. 709 - 8th Avenue S.W.
9	103.' - 6"	- 60°	7/8" XRP	Oct. 14 - 16	S.R.O. 709 - 8th Avenue S.W.
10	104.' - 6"	- 55°	7/8" XRP	Oct. 17 - 19	S.R.O. 709 - 8th Avenue S.W.
11	103.' - 6"	- 50°	7/8" XRP	Oct. 20 - 22	S.R.O. 709 - 8th Avenue S.W.
12	102.' - 6"	- 60°	7/8" XRP	Oct. 24 - 26	S.R.O. 709 - 8th Avenue S.W.
13	104.' - 6"	- 55°	7/8" XRP	Oct. 27 - 29	S.R.O. 709 - 8th Avenue S.W.

Requesting Hole #1, #3 to #13 inclusive 1234.6 M/D

Hole #2 only 6.0 M/D

Total Man/Days Applied For 1240.6 M/D

101  
103  
101  
305



*Handwritten signature*



PRESS LAKE RECEIVED VALORA LAKE

M-1947

DEC 17 1973

REGIONAL OFFICE, KENORA

19-2052

A separate form is required for each type of work to be recorded

# 135

THE MINING ACT REPORT OF WORK

To the Recorder of... Patricia Mining Division... Mining Division

I, Scurry-Rainbow Oil Limited name of P-Recorded Holder 1239 Miner's Licence

709-8th Avenue Southwest, Calgary, Alberta T2P 1H5 Post Office Address

do hereby report the performance of 2220 days of Diamond drilling type of work

not before reported to be applied on the following contiguous claims

Table with 6 columns: Claim No., Days, Claim No., Days, Claim No., Days. Rows include PA248402, PA248403, PA248404, PA248405, PA248408, PA248409, PA248410, PA248411, PA248421, PA248423, PA248424, PA248425, PA248422, PA248430, PA244353, PA244354, PA244355.

All the work was performed on Mining Claim (s) Pa. 46106, 221017, 221018, 21021 (In the case of geological and/or geophysical survey (s) where more than 18 claims are involved attach a schedule)

READ CAREFULLY: THE FOLLOWING INFORMATION IS REQUIRED BY THE MINING RECORDER.

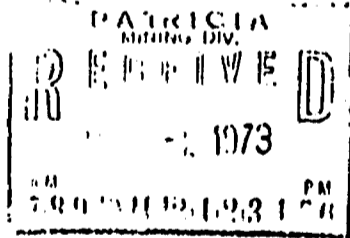
- For Manual Work, Stripping or Opening up of Mines, Sinking Shafts or Other Actual Mining Operations - Names and addresses of the men who performed the work and the dates and hours of their employment.
For Diamond and other Core Drilling - Footage, No. and angle of holes and diameter of core. Name and address of owner or operator of drill. Dates when drilling was done. Signed core log and sketch in duplicate.
For Compressed Air or Other Power Driven or Mechanical Equipment
Type of drill or equipment. Names and addresses of men engaged in operating equipment and the dates and hours of their employment.
For Power Stripping - Type of equipment, Name and address of owner or operator. Amount expended. Dates on which work was done. Proof of actual cost must be submitted within 30 days of recording.
With each of the above types of work sketches are required to show the location and extent of the work in relation to the nearest claim post. In the case of diamond or other core drilling the sketch must be submitted in duplicate.
For Geological and Geophysical Survey - The names and addresses of men employed as well as dates. Type of instrument used in the case of geophysical survey. Reports and maps in duplicate must be filed with the Minister within 60 days of recording.
For Land Survey - the name and address of Ontario Land surveyor.

The Required Information is as Follows: (Attach a list if this space is insufficient)

See Appendix "A"

Core Logs and Sketches to follow

Drilled 2667
Recorded 2220
444 for future filing



Date October 30, 1973

Signature of Recorded Holder or Agent

NO FALSE STATEMENT IN THIS REPORT AND/OR CERTIFICATE IS \$500. OR SIX MONTHS IMPRISONMENT OR BOTH.

Claim No.	Days
PA218928	40
PA218929	40
PA218930	40
PA218931	40
PA218932	40
PA218933	40
PA218934	40
PA218935	40
PA218936	40
PA218937	40
PA218938	40
PA218939	40
PA218940	40
PA218941	40
PA218942	40
	<u>40</u>
	600

Claim No.	Days
PA45978	40
PA45979	40
PA45980	40
PA45981	60
PA45982	<u>40</u>
	260

PA 45982  
 PA 45981  
 PA 45980  
 PA 45979  
 PA 45978

SCURRY - RAINBOW OIL LIMITED  
 REQUIRED INFORMATION TO ACCOMPANY  
 MINING ACT REPORT OF WORK - OCTOBER 30, 1973

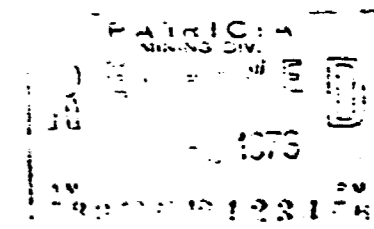
<u>Drill #</u>	<u>Footage</u>	<u>∠ Hole</u>	<u>Core Dia</u>	<u>Dates</u>	<u>Name/Address</u>
11A	327	-55°N	1 7/16" BQ	July 13-17	Scurry-Rainbow Oil Limited 709-8th Avenue Southwest Calgary, Alberta T2P 1H5
12	583	-55°S	1 7/16" BQ	July 18-22	
13	367	-50°S 30°E	1 7/16" BQ	July 27-31	
14	343	-60°S	1 7/16" BQ	Aug. 1-6	
15	597	-60°S	1 7/16" BC	Aug. 7-15	
16	26		1 7/16" BQ	Aug. 23	
16A	447	-60°S	1 7/16" BQ	Aug. 23-31	

Total Drilled 26-

Total M. D. (holes) for 260' 2004'

NB: Drill move July 23-26  
 Water preparation August 16-22

Contract Drillers - Midwest Drilling, Kenora, Ontario

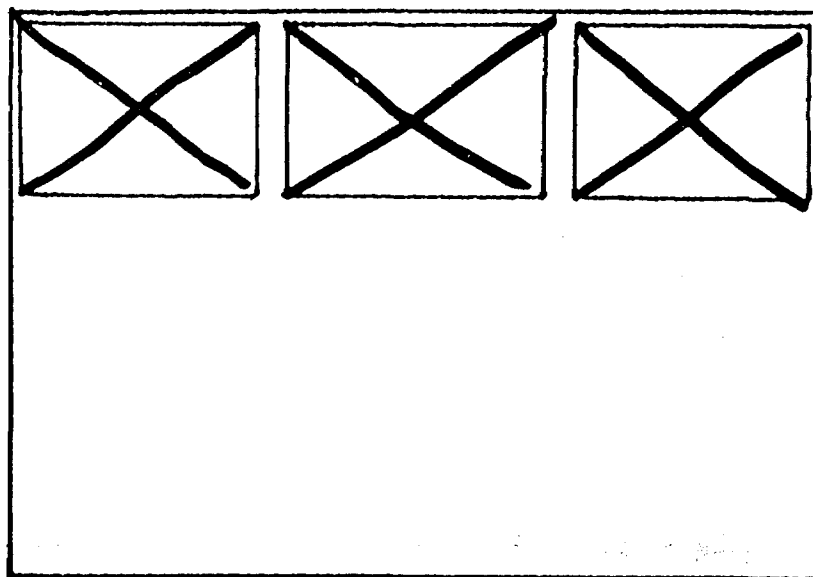


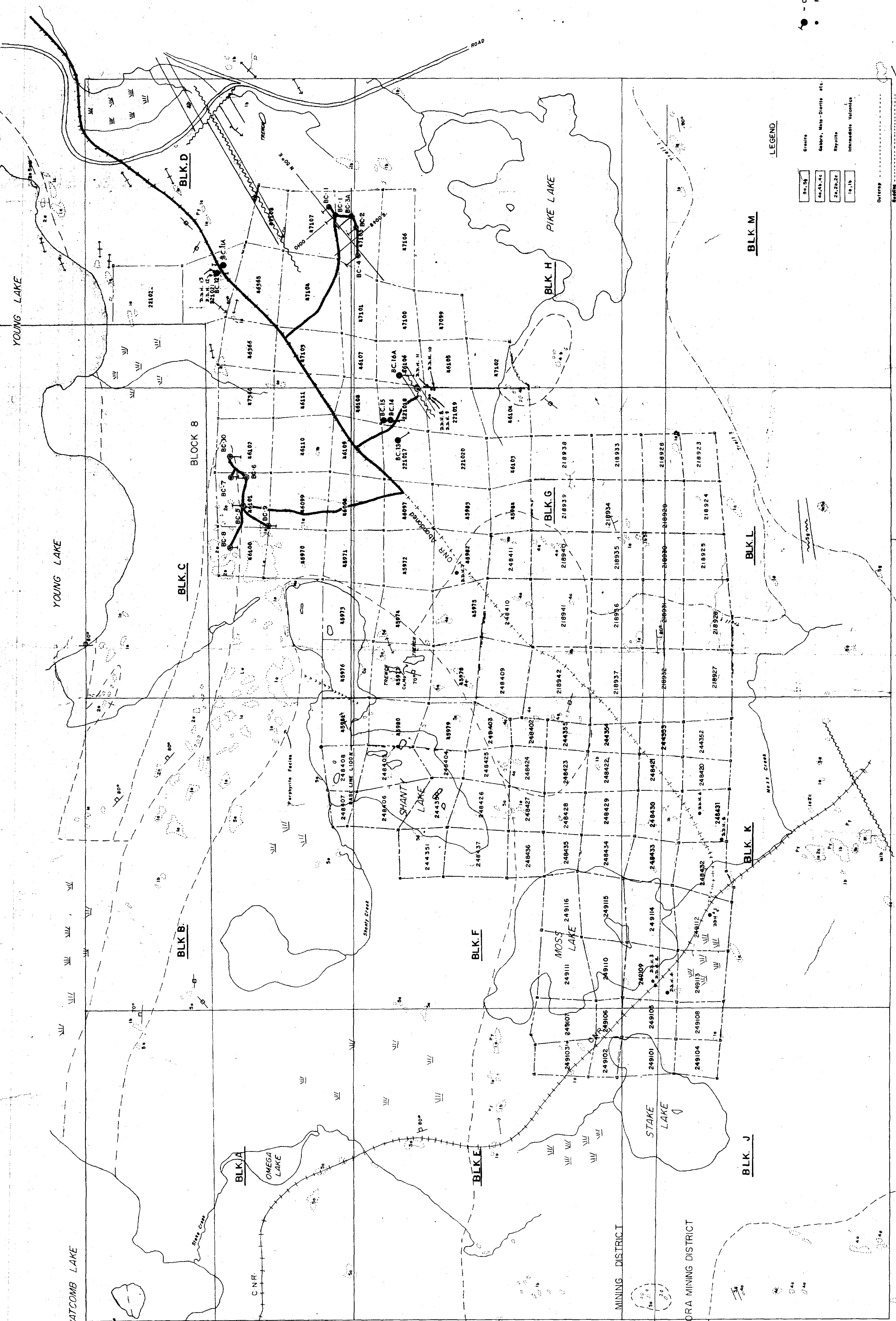
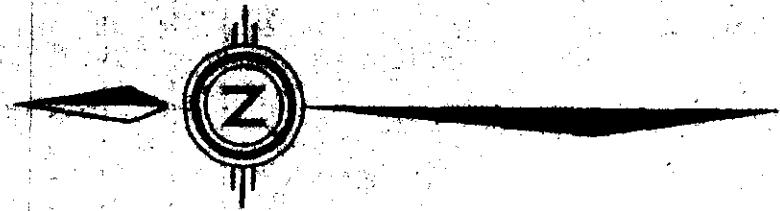
SEE ACCOMPANYING  
MAP(S) IDENTIFIED AS

52G/14SE-0014 #1-3

LOCATED IN THE MAP  
CHANNEL IN THE  
FOLLOWING SEQUENCE

(X)





Completed DDH, 1970 & 1973  
PACK SAGE O.D.H. 1971

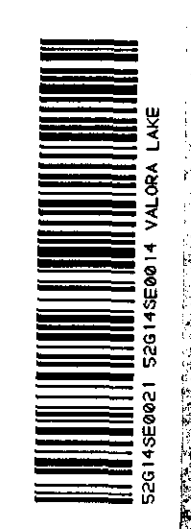
PAID  
RECEIVED  
1971-1973  
100-20118-8-4-6

526/14SE-0014 #1

SCURRY-RAINBOW OIL LTD.  
BRAMBRO LIFT/PRODUCTION  
STURGEON LAKE, ONT.

SCALE 1:1320  
DATE JAN/70  
APPROVED

SCALE 1:1320



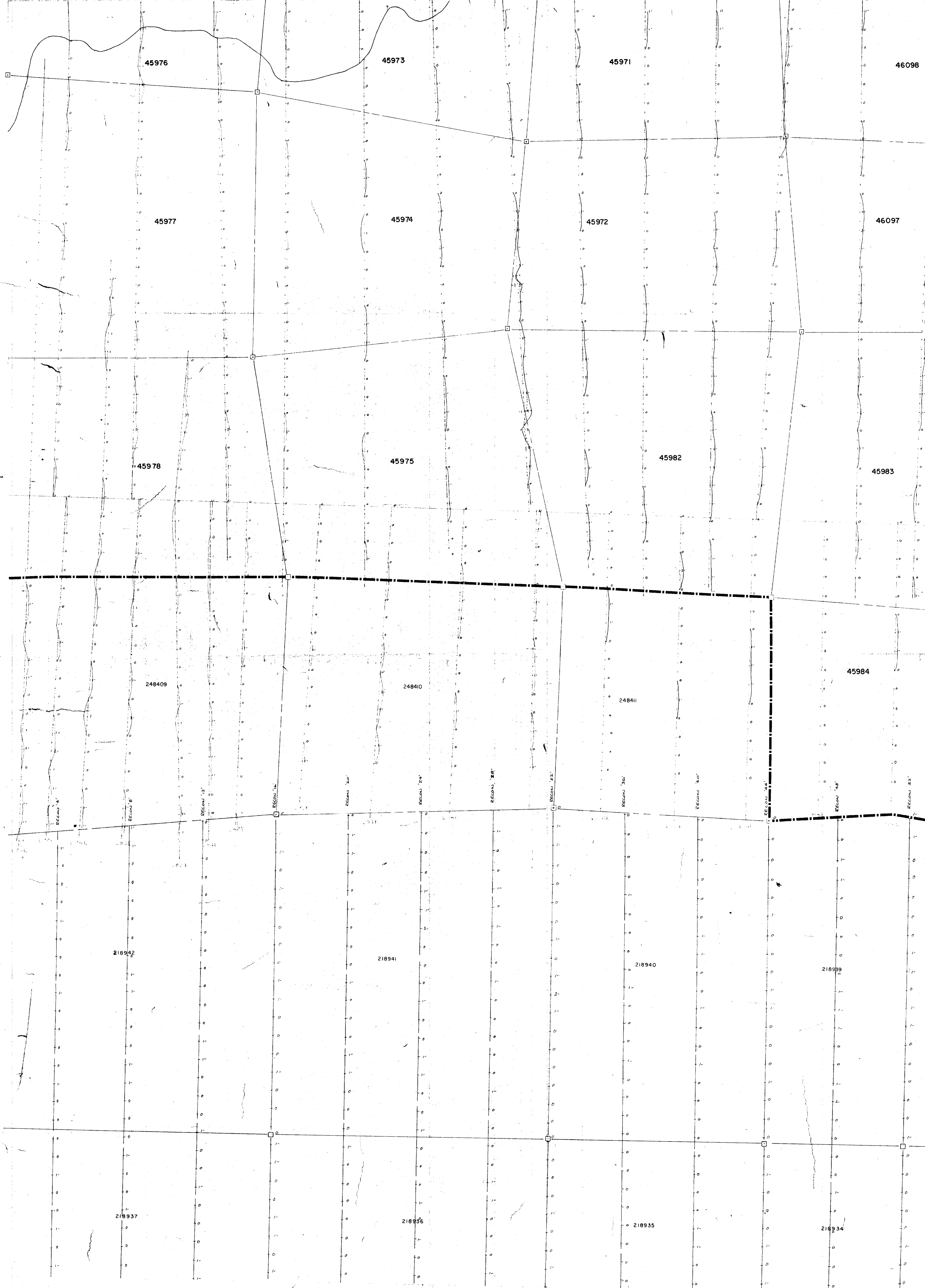
Handwritten notes: L-14, 1000, 1000, 1000

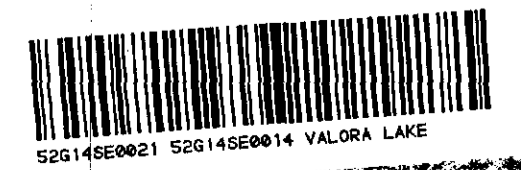
LEGEND

- BLK. 50
- BLK. 40-50
- BLK. 30-40
- BLK. 20-30
- BLK. 10-20

- Gravel
- Gravel, Moss, Quartz, etc.
- Reynolds
- Intermediate Veinlets
- Outcrop
- Bedding
- Lineament
- Fracture, vertical
- Fracture, inclined
- Joint, vertical
- Joint, bedded
- Concretions
- Path
- Stream
- Assessment Area

L76E L80E L84E L88E L92E L96E L100E L104E L108E L112E L116E L120E



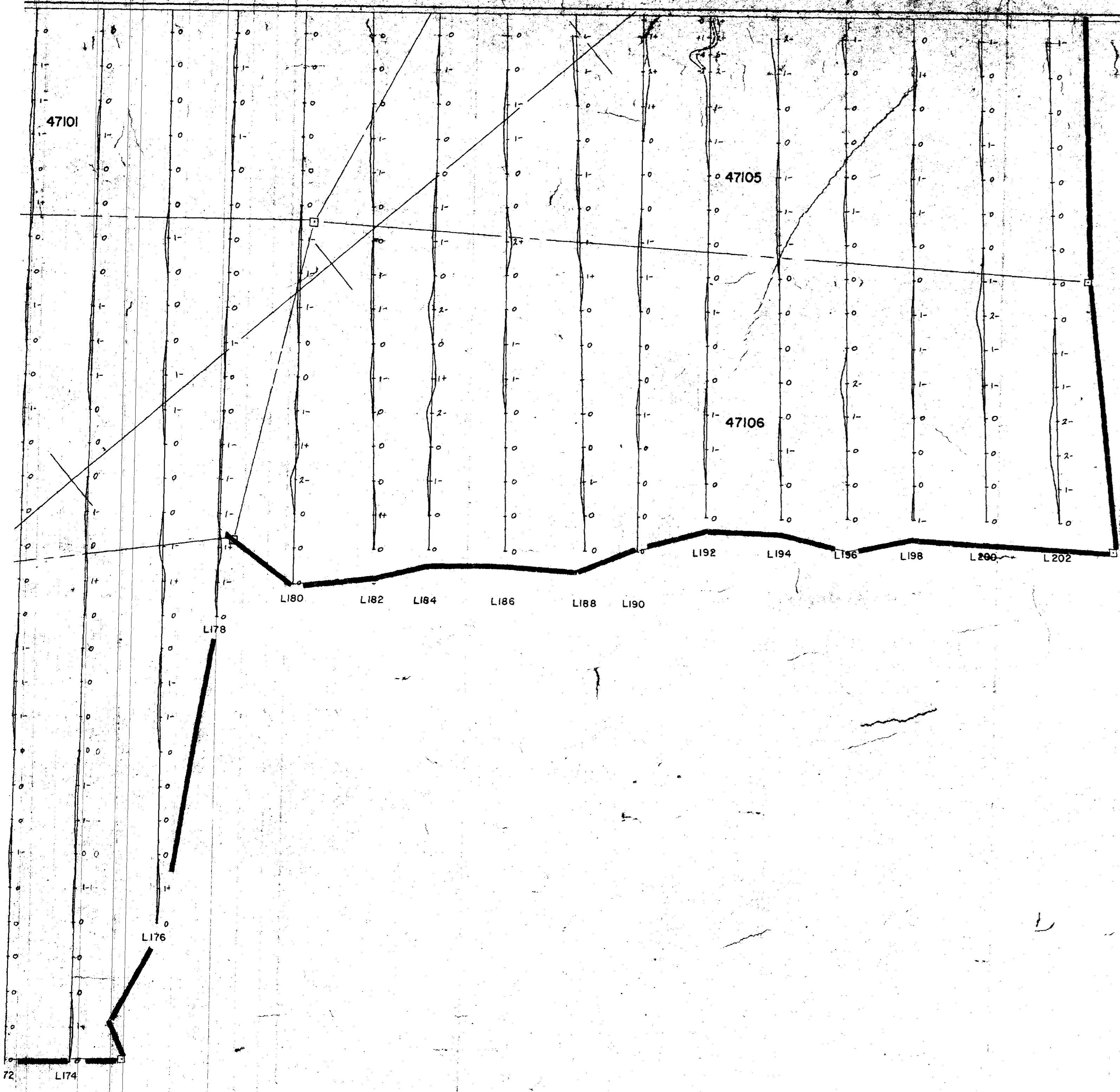




52G/14SE-0014 #2

DRAWN	SCALE	SCURRY-RAINBOW OIL LTD.	J.E.M. SURVEY
TRACED	DATE		SOUTH L74E-L152E
APPROVED			FILE NO 4-2-8





LEGEND  
HIGH FREQ. --- RIGHT  
LOW FREQ. --- LEFT  
1" = 20'

52G/14SE-0014 #3

DRAWN	SCALE 1" = 200'	<b>SCURRY-RAINBOW OIL LTD.</b>	J. E. M. SURVEY
TRACED	DATE FEB. 1970	BRIARCOURT OPTION	South - Lines 154E - 202 E.
APPROVED		STURGEON LAKE, ONT.	FILE NO. STUR. 4-2-9