

010

Diamond Drilling

Area of Valora Lake

Report NO 30

Work performed by: Madsen Red Lake Gold Mines

Claim NO	Hole NO	Footage	Date	Note
PA 245642	1	200'	Sept/71	(1)
	2	160'	Sept/71	(1)
PA 245590	3	216'	Oct/71	(2)
	4	194'	Oct/71	(2)
PA 245646	<u>5</u>	<u>185'</u>	Oct/71	(2)
Total:-		5 DH	955'	

Notes: (1) 405/71
(2) 406/71

DIAMOND DRILL SUMMARY

Hole No: # 1
 Strike S 35° E
 Dip - 45°
 Depth 200.0

logged Sept 27, 1971.
 Started: Sept 20, 1971
 Finished " 26, 1971

Location
 Departure 1952 E
 Latitude 222. S
 Elevation Lake
 plus

DEPTH		DESCRIPTION	ASSAY	
From	To		No:Oz. Au	
0.0	25.0			
		Fine-grained, dark greyish to greenish, massive, , non-magnetic, very few minerals discernable, to the naked eye, slightly sheared, Core angle = 30°, scattered white stringers of carbonate, also very slight carbonate through-out, massive to cubic specks of pyrite, very slight amount of pyrrhotite, associated with the pyrite, rust on seams and joints. Lost core 7.9, 8.8, and 15.4 - 15.0		
25.0	50.0	Same as above, more pronounced carbonate stringers, patches etc, slightly less pyrite, slight shearing C.A. steeper to 60°; 42.2 - 50.0 much finer-grained more massive, less banding, spottily dark greyish, , carbonate stringers.		
50.0	75.0	Dark greenish fine to medium grained, slightly sheared volcanics, slight pyrite and carbonate throughout. 50.0 58.6 very fine-grained, light grey, mainly feldspar with very little dark mineral, as small shreds, slight pyrite.		
75.0	100.0	Dark ^{green} grey volcanics, , slight pyrite and some carbonate, 78.8 - 87.0 very fine-grained, massive , carbonate stringers, slight pyrite, with light greyish yellow waxy colored alteration remnants up to 1 / 4 " in diameter, scattered, mineralized with very slight pyrite, 87.0 - 100.0 very fine-grained, light greyish green, with numerous round white phenocrysts throughout, phenocrysts		

P.A. R. 21-
 MINER.
 15
 AM

HOLE NO: 1

FROM	TO	DESCRIPTION	NO.	ASSAY
		up to 1/8 " in diameter, very slight carbonate in stringers, mild carbonate reaction throughout,		
100.0	125.0	Dark green fine-grained volcanics, sheared, slight pyrite, and carbonate through-out 100.0 - 104.3 light grey green with numerous white phenocrysts, 104.3 - 111.6 contact zone, some angular particles, breccia, slight pyrite and carbonate, coarse grained from 107.0 - 111.6, 111.6 - 121.2 usual dark grey volcanics, 121.2 - 125.0 highly altered and carbonated C.A. - 70° mainly dark grey to black biotite, lamprophyre, few narrow bands pyrite 111.6 - 121.2, two small quartz stringers at 122.9 and 123.8		
125.0	150.0	LAMPROPHYRE Highly altered and carbonated C.A. - 60° Reddish tinge, 127.0 - 127.5 small angular grains of quartz, some pyrite, grading to dark grey volcanics 128.0 - 134.8 with some white phenocrysts 134.8 - 150.0 Medium-grained, dike		

MINING DIV
 NOV - 8 1971
 8:58 PM

FROM	TO	DESCRIPTION	NO.	ASSAY
		dioritic , looking with considerable		
		white mineral in small specks giving		
		core a speckled look or appearance ,		
		small carbonate stringers, with slight		
		carbonate through-out , two narrow		
		quartz stringers, at 140.8 and 142.1		
		, reddish tinge to H.W. of first vein,		
150.0	175.0	DIKE , dioritic looking , dark grey		
		to greenish with white mineral as above		
		slight carbonate , and very slight pyrite,		
		150.5 - 151.6 possibly fine-grained		
		volcanics , very massive , xxx		
175.0	200.0	Volcanics , less dioritic looking		
		possibly approaching a flow,		
		altered , less recognizable minerals		
		, finer-grained, highly carbonated, very		
		- slight pyrite.		
		175 - 200	N.S.	
		Specimen 196		
		Assayed	50 - 55	68
			55 - 60	9
			60 - 65	70
			65 - 70	1
			70 - 75	2
			75 - 80	3

PATRICIA
 MINING DIV.
 E G E
 NOV - 8 1971
 AM 11:42.3 PM 4:58

MADSEN RED LAKE GOLD MINES LIMITED

DIAMOND DRILL SUMMARY

H No:
Strike
Dip
Depth

Sturgeon Lake # 2
N 85 W
- 45
160.0

Started:
Finished
Logged Oct 4, 1971
Sept 27 1971
Sept 30 1971

Location
Departure
Latitude
Elevation

1948 E
216 S
Lake plus

DEPTH		DESCRIPTION	ASSAY	
From	To		No.	Gr.
0.0	25.0	Volcanics, Intermediate, gray, medium-grained, white feldspar and blue quartz phenocrysts, quartz very minor, very slight pyrite, few specks chalc., C.A. = 35°, 17.6 - 25.0 massive, no phenocrysts		
		0.0 - 9.1	N.S.	
		9.1 - 11.8	785	
		Specimens 7 & 11' 11.8 - 25.0	N.S.	
25.0	50.0	Volcanics, intermediate, very-fine-grained, very slight pyrite, fine quartz lacings, 41.5 - 48.2 coarse-grained, similar to the start of the hole, very fine-grained pyrite, slight chalcopyrite, slightly sheared C.A. = 30° at 32.0'		
		Specimens 37 & 47'		
		25.0 - 50.0	N.S.	
50.0	75.0	Volcanics, intermediate, white phenocrysts of feldspar slight shear, slight pyrite, white carbonate stringers regularly spaced 1/4" in thickness, slight shear throughout, locally flat C.A.'s		
		Specimen 63'		
		50.0 - 75.0	N.S.	
75.0	100.0	Similar to above, massive , white carbonate lacings 75.0 to 86.0 considerable less from 86.0-100.0, more massive with white phenocrysts, slightly magnetic at 90.0'		
		Specimens 77 & 97'		
		75.0 - 100.0	N.S.	

PATRICIA
D. F. KELLY
JUN 8 1971
AM 7890111342345

FROM	TO	DESCRIPTION	NO.	ASSAY
100.0	125.0	Similar to above, fine-grained, carbonated, 100 - 112; 112.0' on white phenocrysts , slight pyrite, 100- 112 fairly heavy pyrite, fairly heavy carbonate 120- 125 C.A. 30° L.O. 106.6 - 107.5 Specimen 111 113.5 - 114.4		
		100- 120	N.S.	
		120 - 125	787	
125.0	150.0	Similar to above, fairly heavy carbonate, through-out, slight pyrite, faded, light and dark banding, very fine, C.A. 40° ±, slight pyrite on bedding planes Specimen 146', 145.0 - 145.0		
		125.0 - 143.0	N?S.	
		143.0 - 145.0	788	
		145.0 - 150.0	N.S.	
150.0	160.0	Similar to above, fine-grained, - carbonated through out, slight pyrite, C.A. 40°± L.O. 153.3 - 156.3 Quartz carbonate and slight carbonate 153.7 - 154.1		
		150.0 - 153.3	N.S.	
		153.3 - 154.2	789	
		154.2 - 160.0	N.S.	
		Specimen 156		

PATRIOTIA
MINING DIV.
E F E W
NOV - 8 1971
AM 12:24:58 PM

160.0 END OF HOLE Logged by
Chief geologist.

HIGHWAY 599



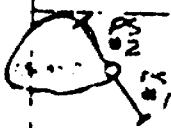
STURGEON
LAKE

PA-245638

PA-245639

PA-245640

8 E 12 E 16 E 20 E 24 E 28 E 32 E
BASELINE



PS#1 - 200ft
PS#2 - 160ft
Total - 360ft

PA-245643

PA
245642

PA-245644

Scale
40 chains

MADSEN RED LAKE GOLD MINES
STURGEON LAKE CLAIMS
PLAN - D.D. No. PS#1, PS#2

Scale: 1" = 400'

Nov. 1971

PATRICIA
MINING DIV.
RECEIVED
NOV - 8 1971
AM
720000 1100 100 20 21 17

DIAMOND DRILL SUMMARY

Hole No: #3	Location:
Strike: S 65 E	Departure: 680E
Dip: -45°	Latitude: 3030S
Depth: 216.0	Elevation: Lake plus
Started: Oct. 4, 1971	
Finished: Oct. 9, 1971	
Logged: Oct. 11, 1971	

<u>DEPTH</u>		<u>DESCRIPTION</u>	<u>ASSAY</u>
<u>From</u>	<u>To</u>		<u>No:Oz.Au</u>
0.0	25.0	DIORITE, grano, mottled, greyish white and greenish, large angular and laths of feldspar, blue quartz eyes, two ages of feldspars, alteration product in same crystal, very slight chalcopyrite throughout, occasionally some magnetite, slight, 1.0 - 3.8 possibly flow volcanics, slightly altered, faded, similar in appearance to main mass, silicious, blue quartz, feldspar crystals, chalcopyrite, reddish tinge to pyrrhotite, 23.2, specimen 21.3	
		0.0 - 25.0	N.S.
25.0	50.0	AS ABOVE Narrow sections very fine-grained, possibly volcanics, greyish green, 30.7 - 31.3, 33.9 - 35.2, 37.2 - 37.6, 38.5 - 39.0, 45.0 - 50.0 with inclusions of main rock type, chalcopyrite, slight pyrite 38.0 - 43.3 Specimen 48.0	
		25.0 - 50.0	N.S.
50.0	75.0	AS ABOVE: with very minor bands of fine-grained possible volcanics, 65.0 - 75.0 more silicious possible volcanics. slight pyrite and chalcopyrite as pin points, slight banding, L.C. 53.8 - 55.0 specimen 71.0	
75.0	100.0	Volcanics - fine grained, with narrow sections coarse diorite, increasing in silica, specimen 93.0' silicious, more blue quartz, quartz stringers and silicification 81.4 - 82.2, 83.1 - 83.6, 84.5 - 85.8, 87.7 - 88.7, 92.5 - 93.7, Molybdenite 85.7 slight chalcopyrite with higher concentrations in the more silicious sections. 83.2 metallic looking mineral in or with angular grains.	
100.0-	125.0	Diorite, grano, grading more coarser grained - narrow section much finer grained (reverse of the preceding box), fine pyrite, more massive with associated pyrrhotite with an increase in silica coarse grained 119.0 - 120.0 with some reddish metallic mineral possibly magnetite although section not very magnetic. In places high in magnetite, biotite developed in fine-grained sections, 113.6 some molybdenite, specimen 116.0'	
125.0 -	150.0	Diorite, grano, fine-grained 125.0 - 126.2, little chalcopyrite, pyrite, highly magnetic 140.3, 142.9, 145.2 and 146.4. Very slight chalcopyrite throughout with heavier concentration near blue quartz 140.5 - 142.9	
175.0 -	200.0	Diorite, grano, mainly coarse grained, fairly heavy magnetite, stringers of quartz also blue quartz eyes, slight chalcopyrite throughout with heavier concentrations near quartz carbonite and carbonate 186.8 - 187.8, molybdenite, 177.6 associated with blue quartz, fairly heavy magnetite	
200.0 -	216.0	Diorite, grano, fine chalco to the end of the hole.	

Logged by

Frederick G. Harriman
Chief Geologist.

**DUPLICATE COPY
POOR QUALITY ORIGINAL
TO FOLLOW**

DIAMOND DRILL SUMMARY

Hole No: **3**
 Strike **S 65 E**
 Dip **-45°**
 Depth **216.0**

Started: **Oct 4 1971**
 Finished **Oct 9**
 Logged **Oct 11 1971.**

Location
 Departure **680 E**
 Latitude **5030 S**
 Elevation **Lake plus**

DEPTH		DESCRIPTION	ASSAY
From	To		No:Oz.Au
0.0	25.0	DIORITE, grano, mottled, greyish white and greenish, large angular and laths of feldspar, blue quartz eyes, two ages of feldspars, alteration product in some crystal, very slight chalcopyrite throughout, occasionally some magnetite, slight, 1.0 - 3.8 possibly flow volcanics, slightly altered, faded, similar in appearance to main mass, silicious, blue quartz, feldspar crystals, chalcopyrite, reddish tinge to pyrrhotite, 23.8, specimen 81.3	
		0.0 - 25.0	N.S.
25.0	50.0	As above, As Above. Narrow sections very fine-grained, possibly volcanics, grayish green, 50.7 - 51.3, 53.9 - 55.2, 57.8 - 57.6, 58.5 - 59.0, 45.0 - 50.0 with inclusions of main rock type, chalcopyrite, slight pyrite 58.0-45.5 Specimen 48.0	
		25.0 - 50.0	N.S.
50.0	75.0	As Above; with very minor bands of fine-grained possible volcanics, 65.0 - 75.0 more silicious - possibly volcanics - slight pyrite and chalcopyrite as pin points, slight banding, L.C. 53.8 - 53.0 specimen 71.0	
75.0	100.0	Volcanics - fine-grained, with narrow sections coarse diorite, increasing in silica, specimen 93.0' silicious, more blue quartz, quartz stringers and silicification 81.4 - 82.2, 83.1 - 83.6, 84.5 - 85.8, 87.7 - 88.7, 92.5 - 93.7, Molybdenite 85.7 slight chalcopyrite with higher concentrations in the more silicious sections, 83.8 metallic looking mineral in or with angular grains	

PATRICIA
 MINING DIV.
 ELEV
 NOV - 8 1971
 AM 1.2 PM 1.58

HOLE NO: #3

2.

FROM	TO	DESCRIPTION	NO	ASSAY
100.0	125.0	Diorite, grano, grading more coarser grained-narrow section much finer-grained (reverse of the proceeding box) fine pyrite, more massive with associated pyrrhotite with an increase in silica coarse grained 119.0 - 125.0 with some reddish metallic mineral possibly magnetite although section not very magnetic. in places high in magnetite, biotite developed in fine-grained sections, 113.6 some molybdenite, specimen 116.0'		
125.0	150.0	Diorite, grano, fine-grained 125.0-126.2, little chalcopyrite, pyrite, highly magnetic 140.8, 142.9, 145.2 and 146.4. Very slight chalcopyrite throughout with heavier concentrations near blue quartz 140.5 - 142.9.		
150.0	175.0	Diorite, grano, fine-grained volcanics 156.2 - 160.7, 162.9-169.5, fine chalcopyrite throughout with heavier concentrations with fine-grained formations and blue quartz specimen 153.2 and 167.0'		
175.0	200.0	Diorite, grano, mainly coarse grained fairly heavy magnetite, stringers of quartz also blue quartz eyes, slight		

DUPLICATE COPY
POOR QUALITY ORIGINAL
TO FOLLOW

HOLE NO:

2.

FROM	TO	DESCRIPTION	NO.	ASSAY
100.0	125.0	Diorite , grano, grading more coarse grained- narrow section much finer-grained (reverse of the proceeding box) fine pyrite, , more massive with pyrrhotite with an increase in silica coarse grained 119.0 - 125.0 with some reddish metallic mineral possibly magnetite although section not very magnetic. in places high in magnetite, biotite developed in fine-grained sections, 113.6 some molybdenite, specimen 115.0'		
125.0	150.0	Diorite, grano, fine-grained 125.0 - 128.8 , little chalcopyrite, pyrite, highly magnetic 140.5 , 142.9 , 145.2 and 146.4 . Very slight chalcopyrite throughout with heavier concentrations near blue quartz 140.5 - 142.9		
150.0	175.0	Diorite , grano, fine-grained volcanic 155.2 - 160.7 , 162.9 - 169.0, fine chalcopyrite throughout with heavier concentrations with fine-grained formations and blue quartz specimen 155.2 and 167.0'		
175.0	200.0	Diorite , grano, mainly coarse grained fairly heavy magnetite, stringers of quartz also blue quartz eyes, slight		

PATRICK

1971

8 1971

AM

PM

11023456

DIAMOND DRILL SUMMARY

Hole No: 4
 Strike S 65° E
 Dip - 45°
 Depth 194.0

Oct 12 1971
 Oct 16 1971
 Started:
 Finished October 15, 1971.
 Logged

Location
 Departure 775
 Latitude 2923
 Elevation Lake 1

DEPTH		DESCRIPTION	ASSAY	
From	To		No: Oz. Au	
0.0	25.0	Diorite, grano, Dark grey and white mottled, coarse-grained, with a little pyrite, blue quartz eyes, Rusty seams and joints, 0.0 - 10.0.		
		Few stringers quartz 1/4" deep blue, highly magnetic 14.0 - 16.0		
		2 - 5		
		- 5 - 10		
		10 - 15		
		15 - 20		
		20 - 25		
25.0	50.0	Diorite, grano, similar to above, 25 - 40 few fine grained sections with a little more silica, very slight pyrite, and a few specks of chalcopyrite.		
		L. C. 44.8 - 45.0		
		25 - 30		
		30 - 35		
		35 - 40		
		40 - 45		
		45 - 50		
50.0	75.0	Diorite, grano, as above, very silicious, 51 - 52.4		
		54.5 - 57.6 1 68.6 - 75.0 specimen 51.0		
		50 - 55		
		55 - 60		
		60 - 65		
		65 - 70		
		70 - 75		
75.0	100.0	Grano, diorite, , very silicious, very little pyrite, fine-grained, 75.0 84.2 possibly volcanics, specimen 78.0		
		75 - 80		
		80 - 85		

HO NO:

FROM	TO	DESCRIPTION	NO.	ASSAY
		85 - 90	958	tr
		90 - 95	9	"
	Resplit 95 - 97.5 Tr 97.5 - 100 -02	95 - 100	60	.18
100	125	Grano diorite , as above , dark green fine-grained, sections massive, considerable biotite developed possibly volcanics, or dike good contacts 110.2 - 111.4 116.7 - 118.5, very little pyrite		
	Resplit 100 - 102.5 .02	100 - 105	961	.08
	102.5 - 105 tr	105 - 110	2	.02
		110 - 115	5	tr
		115 - 120	4	tr
		120-125	5	.02
125.0	150.0	Diorite , grano as above, fin:-grained banded C.A. = 35 - 40° , massive possibly volcanics , quite siliceous C.A. = 35°		
		127.9 - 128.7		
		G Dio 128.7 - 129.5		
		129.5 - 130.7		
		133.7 - 137.8		
		Slight carbonate , banding due to biotite developed specimen 136		
		125 - 130	966	tr
		130 - 135	7	.02

PATROLIA
 RECEIVED
 NOV 8 1971
 AM 2:34 PM 12:15

FROM	TO	DESCRIPTION	NO.	ASSAY
		135 - 140	968	tr
		140 - 145	9	"
		145 - 150	70	"
150.0	175.0	Granodiorite , with very fine-grained sections		
		150.3 - 159.5 , 160.5 . 161.0,		
		162.0 - 165.2 , 167.9 - 168.8		
		171.2 - 172.6 silicious some large		
		white feldspars , blue quartz ,		
		little chalcopyrite, 159.0 , and 164.2		
		, 162.1 specimen 156.7		
		180 - 185	971	tr
		185 - 190	2	"
		190 - 195	3	"
		195 - 200	4	.02
		200 - 205	5	tr
175.0	194.0	Granodiorite, little carbonate, on joint planes very minor fine-grained sections , little pyrite,		
		specimen 184.5 , 175 - 180	976	Tr
		180 - 185	7	"
		185 - 190	8	"
		190 - 194	9	"
		logged by		
		Frederick H arriman		
		Chief geologist.		

PATRICIA
 MINING DIV.
 RECEIVED
 NOV 8 1971
 PM
 2:34:58

DIAMOND DRILL SUMMARY

Hole No: 5
 Strike: S65°E
 Dip: -45
 Depth: 185.0

Started: Oct. 17, 1971
 Finished: Oct. 20, 1971
 Logged: Oct. 26, 1971

Location:
 Departure: 1156E
 Latitude: 5060E
 Elevation:

0.0 - 25.0	DIORITE Medium grained, greenish and white mottled, massive, few quartz stringers, slight carbonate, very slight pyrite, 6.5 - 19.3 light freyish green, slightly sheared and banded, volcanics, very slight pyrite, carbonate, fine-grained, specimens 1.5 and 17.0.	ASSAY No.Oz.Au
	0.0 - 25.0	N.S.
25.0 - 50.0	Diorite, very massive, occassionally very narrow blue, quartz veinlets, little pyrite in both veinlet and wall rock. Specimen 40.6	
50.0 - 75.0	Diorite, as above, 60.7 - 63.1 possibly volcanics, fine-grained, massive, silicious, little pyrite, bluish grey, very silicious, massive, little pyrite, carbonate. few rusty vugs, 65 - 66.5 similar in appearance to the diorite but more silicious, little chalco, 72.7 - 73.9, Dike? Fine-grained, dark grey volcanics specimens 62.0 - 66.0	
	50.0 - 60.6 60.6 - 63.1 63.1 - 65.0 65.0 - 67.7 67.7 - 70.6 70.6 - 75.0	62 3 4 5 N.S.
75.0 - 100.0	Diorite, blue quartz eyes, increase in quartz giving sections highly silicious appearance, while others have narrow blue quartz veins, pyrite, volcanic appearance, pyrite 83.0 - 85.0 and 88.1 - 89.6, blue quartz veins have pyrite on contacts, chalco 76.1	
	75.0 - 100.0	N.S.
100.0 - 125.0	Dioritic, very fine-grained, micaceous, volcanics, little pyrite, 104.0 - 106.6, 106.6 - 125.0 medium grey, fine-grained matrix, white, angular and rounded feldspar phenocrysts, centers of phenocrysts much darker than outside rim. some carbonate throughout pyrite on joint planes.	
	100 - 125	N.S.
125.0 - 150.0	Diorite, blue quartz eyes, 125.0 - 127.2 white phenocrysts grading to possibly volcanics, 127.2 - 128.1 little pyrite, little chalco 128.1 - 139.0, very narrow volcanic sections, scattered, silicious 127.2 - 128.1 specimen 145.1	
	125.0 - 127.1 127.1 - 128.1 128.1 - 150.0	66 7 N.S.
150.0 - 175.0	Diorite, quite coarse grained, 150 - 154 more silicious, few blue quartz veins stringers, carbonate, throughout, 159.3 - 163.7 dark green fine-grained volcanics. Specimen 170.1	
	150 - 175	N.S.
175.0 - 185.0	Dioritic as above, L.C. 179.1 - 179.6 175 - 185	
185.0	END OF HOLE	

**DUPLICATE COPY
 POOR QUALITY ORIGINAL
 TO FOLLOW**

Logged by: _____

F. G. Harriman

DIAMOND DRILL SUMMARY

No: 5
 Strike S 65 °E
 Dip - 45
 Depth 185.0

Started: Oct 17 1971
 Finished Oct 20 1971
 Logged Oct 26 1971

Location
 Departure 1156 E
 Latitude 50608
 Elevation Lake plu

DEPTH		DESCRIPTION	ASSAY
From	To		No: On, M
0.0	25.0	Diorite Medium grained, greenish and white mottled, massive, few quartz stringers, slight carbonate, very slight pyrite, 6.5 - 19.3 light greyish green, slightly sheared and banded, volcanics, very slight pyrite, carbonate, fine-grained, specimens 1.5 and 17.0 C.0 - 25.0	N.S.
25.0	50.0	Diorite, very massive, occasionally very narrow blue quartz veinlets, little pyrite in both veinlets and wall rock. specimen 40.6	
50.0	75.0	Diorite, as above, 60.7 - 63.1 possibly volcanics fine-grained, massive, silicious, little pyrite, Bluish grey, very silicious, massive, little pyrite, carbonate, few rusty vugs, 65 - 66.5 similar in appearance to the diorite but more silicious, little chalc, 72.7 - 73.9, Dike ? Fine-grained, dark grey volcanics, specimens 62.0 - 66.0 50.0 - 60.6 60.6 - 63.1 63.1 - 65.0 65.0 - 67.7 67.7 - 70.6 70.6 - 75.0	62 3 4 5 N.S.
75.0	100.0	Dioritic, blue quartz eyes, increase in quartz giving sections highly silicious appearance, while others have narrow blue quartz veins, pyrite,	

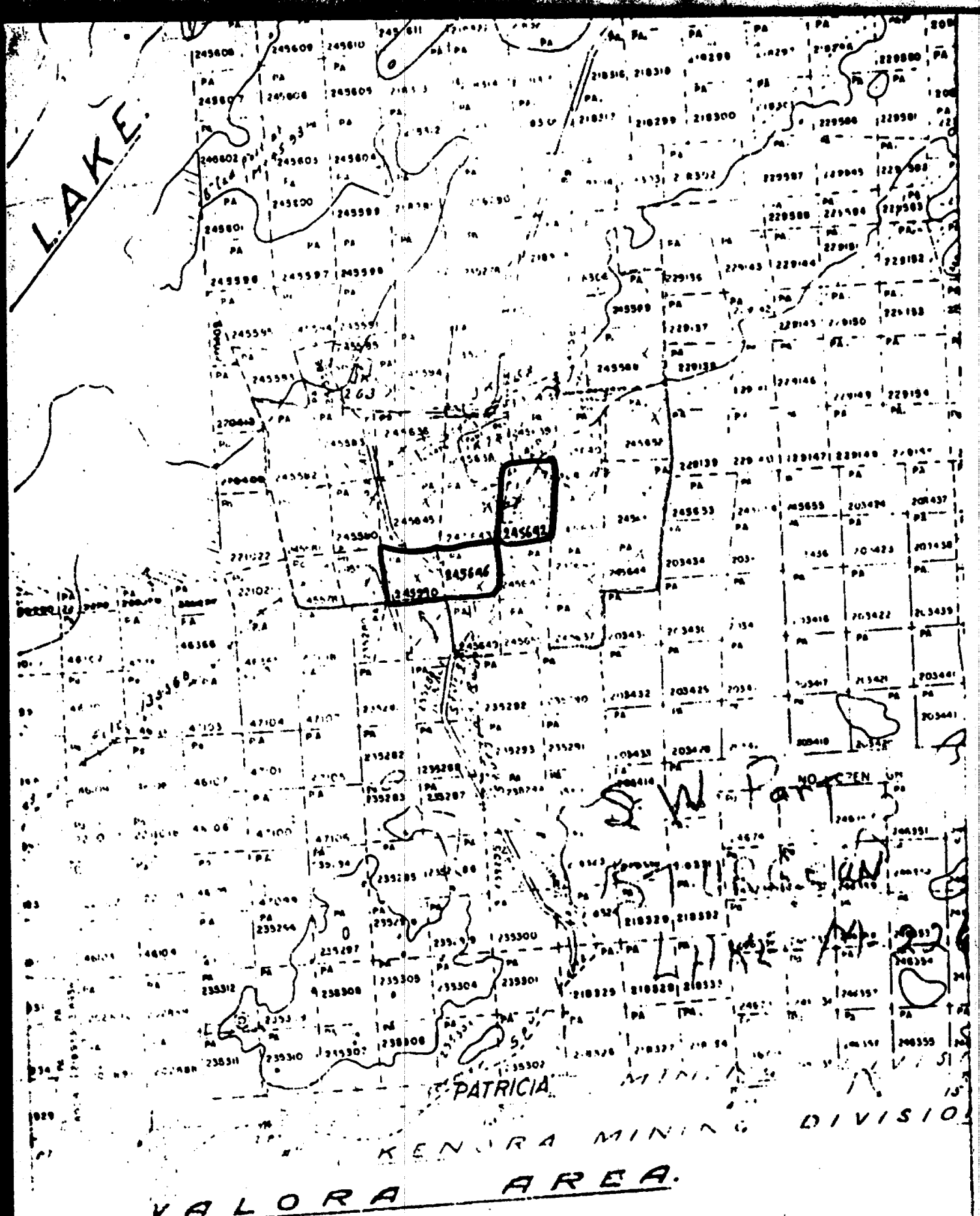
NO: 5

5

FROM	TO	DESCRIPTION	NO.	ASSAY
		volcanic appearance, pyrite		
		83.0 - 85.0 and 88.1 - 89.6, blue		
		quartz veins have pyrite on contacts,		
		chalco 76.1		
		75.0 - 100.0	N.S.	
100.0	125.0	Dioritic, very fine-grained,		
		micaceous, volcanics, little pyrite,		
		104.0 - 106.6, 106.6 - 125.0		
		medium grained; grey, fine-grained		
		matrix, white, angular and rounded feldspar		
		phenocrysts, centers of phenocrysts		
		much darker than outside rim.		
		some carbonate throughout, pyrite on		
		joint planes,		
		100 - 125	N.S.	
125.0	150.0	Dioritic, blue quartz eyes, 125.0-		
		127.2 white phenocrysts grading		
		to possibly volcanics, 127.2 - 128.1		
		, little pyrite, little chalco 128.1		
		- 139.0, very narrow volcanic sections		
		, scattered, silicious 127.2 - 128.1		
		specimen 145.1		
		125.0 - 127.1	66	
		127.1 - 128.1	7	
		128.1 - 150.0	N.S.	

PATRICK DIV.
 NOV 8 1951
 PM

A



VALORA AREA
KENDRA MINING DIVISION

VALORA LK
S2G14SE
M-2052



52G14SE0023 52G14SE0029C1 VALORA LAKE

300

Scale
40 chains

S.W. Part STURGEON LAKE
M-2266



A separate form is required for each type of work to be recorded.

#405

THE MINING ACT REPORT OF WORK

To the Recorder of Patricia Mining Division
MADSEN RED LAKE GOLD MINES LIMITED A - 36278
name of Recorded Holder Miner's Licence

MADSEN, Ontario
Post Office Address
do hereby report the performance of 360 days of Diamond Drilling
type of work

not before reported to be applied on the following contiguous claims

Claim No.	Days	Claim No.	Days	Claim No.	Days
		see attached list			

All the work was performed on Mining Claim (s) PA 26542 245642
(In the case of geological and/or geophysical survey (s) where more than 18 claims are involved attach a schedule)

READ CAREFULLY: THE FOLLOWING INFORMATION IS REQUIRED BY THE MINING RECORDER.

- For Manual Work, Stripping or Opening up of Mines, Sinking Shafts or Other Actual Mining Operations - Names and addresses of the men who performed the work and the dates and hours of their employment.
- For Diamond and other Core Drilling - Footage, No. and angle of holes and diameter of core. Name and address of owner or operator of drill. Dates when drilling was done. Signed core log and sketch in duplicate.
- For Compressed Air or Other Power Driven or Mechanical Equipment
Type of drill or equipment. Names and addresses of men engaged in operating equipment and the dates and hours of their employment.
- For Power Stripping - Type of equipment. Name and address of owner or operator. Amount expended. Dates on which work was done. Proof of actual cost must be submitted within 30 days of recording.
- With each of the above types of work sketches are required to show the location and extent of the work in relation to the nearest claim post. In the case of diamond or other core drilling the sketch must be submitted in duplicate.
- For Geological and Geophysical Survey - The names and addresses of men employed as well as dates. Type of instrument used in the case of geophysical survey. Reports and maps in duplicate must be filed with the Minister within 60 days of recording.
- For Land Survey - the name and address of Ontario Land surveyor.

The Required Information is as Follows: (Attach a list if this space is insufficient)

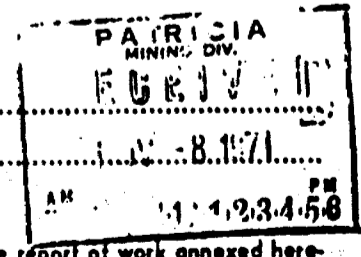
HOLE	FOOTAGE	DIP ANGLE	CORE DIAMETER	DATES
PS #1	200	-45°	7/8"	September 20 - 26, 1971
PS #2	160	-45°	7/8"	September 27 - 30, 1971

Operator - Nick Marko, Blind River, Ontario
Drill owned by Trucco, Canada, Limited - North Bay

Date Nov 3/71
MADSEN RED LAKE GOLD MINES LIMITED
F. A. Innes
Signature of Recorded Holder Mine Manager

The Mining Act
Certificate Verifying Report of Work

I, F. A. Innes,
Madsen, Ontario.
(Post Office Address)



hereby certify:

- That I have a personal and intimate knowledge of the facts set forth in the report of work annexed hereto, having performed the work or witnessed same during and/or after its completion.
- That the annexed report is true.

Dated November 3 19 71

[Signature]
Signature
Pa 245578

THE PENALTY FOR MAKING A FALSE STATEMENT IN THIS REPORT AND/OR CERTIFICATE IS \$500. OR SIX MONTHS IMPRISONMENT OR BOTH

#405

November 3, 1971

MADSEN RED LAKE GOLD MINES LIMITED

STURGEON LAKE CLAIMS

Assessment work of 360 days of diamond drilling on Claim PA 265 642 to be applied on the following 30 contiguous claims.

<u>Claim No.</u>	<u>Days</u>	<u>Claim No.</u>	<u>Days</u>
PA 245578	12	PA 245638	12
245579	12	245639	12
245580	12	245640	12
245581	12	245641	12
245582	12	245642	12
245583	12	245643	12
245584	12	245644	12
245585	12	245645	12
245586	12	245646	12
245587	12	245647	12
245588	12	245648	12
245589	12	245649	12
245590	12	245650	12
PA 245636	12	245651	12
245637	12	245652	12

Total = 360 days

[Handwritten signature]

PATRICIA
MINING DIV.
EUGENE, OR
NOV - 8 1971
AM 11 23:58 PM

47
10 245578

November 3, 1971

#406

MADSEN RED LAKE GOLD MINES LIMITED

STURGEON LAKE CLAIMS

Assessment work of 595 days of diamond drilling on claims PA 245590 and PA 245646 to be applied on the following 30 contiguous claims.

<u>CLAIM NO.</u>	<u>Days</u>	<u>Claim No.</u>	<u>Days</u>
PA 245578	8	PA 245638	8
245579	8	245639	48
245580	8	245640	48
245581	8	245641	48
245582	8	245642	35
245583	8	245643	48
245584	8	245644	8
245585	8	245645	8
245586	8	245646	3
245587	48	245647	48
245588	48	245648	8
245589	8	245649	48
245590	21	245650	8
PA 245636	8	245651	8
245637	8	245652	8

Total = 595 days

