

DIAMOND DRILL RECORD

PROPERTY Chimo Gold Mines

HOLE NO. 71-20 (Revised)

SHEET NUMBER 1 SECTION FROM 0 TO 269 STARTED May 26
 LATITUDE 24 - S DATUM _____ COMPLETED June 5
 DEPARTURE 84 - W BEARING 324° ULTIMATE DEPTH 1194
 ELEVATION _____ DIP 60° PROPOSED DEPTH _____

DEPTH FEET	FORMATION	SAMPLE NO	WIDTH OF SAMPLE	GOLD %	SLUGS OF GOLD		
0- 49	Casing						
49- 72	Rhyolite tuff-interbanded with andesite- slightly greenish		C.A. -20°		Schistose		
72-100.3	Rhyolite tuff-pinkish grey		Greater schistose		Uniform		
100.3-127	Interbanded rhyolite andesite-abundant quartz carbonate stringers, some carrying chalco. and pyrite-1" stringer at 100 with chalco. and sparse zinc- grey and pink bands		C.A. -20°				
127-146	Rhyolite tuff- abundant carbonate-diss. chalco. at 130-diss. fine pyrite bands from in qtz. stringer 143- light and dark grey	132	Chloritized -		Dacite		
146-170	Mixed rhyolite andesite tuff- wavy banding- abundant carbonate-stringers and blebs of fine pyrite throughout-some sparse chalco. dark grey-light banding - core angle 70° @ 170		C.A. -15°		Fragmental		in places
170-217	Rhyolite tuff-considerable qtz. carb. and sericite-diss.stringers and blebs of pyrite a few grains of chalco. C.A. 70° @ 185						
217-269	Andesite rhyolite tuff- light and dark grey- sparse carb.-stringers and blebs of pyrite core angle-80° @ 225						

N.M.P. TORONTO-STOCK FORM NO. 801 REV. 12/59

Logged by Mr. S. Johnson

Revised Comments by Dr. N. S. Beaton

DRILLED BY _____

SIGNED _____

DIAMOND DRILL RECORD

PROPERTY Chimo Gold Mines

HOLE NO. 71-20 (Revised)

SHEET NUMBER 2 SECTION FROM 269 TO 579 STARTED May 26

LATITUDE 24 - S DATUM _____ COMPLETED June 5

DEPARTURE 84 - W BEARING 324° ULTIMATE DEPTH 1194

ELEVATION _____ DIP 60° PROPOSED DEPTH _____

DEPTH FEET	FORMATION	SAMPLE NO.	WIDTH OF SAMPLE	GOLD %	BLUES GOLD %		
269-281.5	Dacite- creamy color- fine grained- specks of pyrite	C.A.	-30°	Rhyolite	tuff	Even grain	
281.5-288	Tuff mottled and banded-light grey-considerable pyrite at 286- core angle 70° @ 286	Fragmental		- Light grey	down out		
288-336.5	Tuff-stringers blebs a diss. of fine pyrite light grey- core angle 60° @ 326	Dacitic		- Well banded			
336.5-360.3	Pyritic dacite-creamy color	Rhyolite		- Even grain	- Feldspar grains	distinct	
360.3-434	Tuff - pyrite in stringers and blebs- increasing toward 434-light grey- C.A. 60° @ 427	Dacitic		- Schistose			
434-508	Tuff - light grey - in places slightly fragmental- considerable pyrite	C.A.	- 25°	Mottled with chlorite in places -			
508-531.5	Tuff - Some diss. pyrite	Dacitic		- Even banding 30°			
531.5-534.5	Tuff - 80% pyrite	Schistose		- Quartz	Stringers		
534.5-541.5	Tuff-heavy pyrite from 537-539 a few qtz. string.						
541.5-560	Fragmental tuff-some pyrite						
560-579	Rhyolite tuff- abundant qtz. eyes-sparse pyrite core angle 60° @ 560	Rounded and		Squarish Quartz			

DIAMOND DRILL RECORD

PROPERTY Chimo Gold Mines

HOLE NO. 71-20 (Revised)

SHEET NUMBER 3 SECTION FROM 579 TO 875 STARTED May 26
 LATITUDE 24 - S DATUM _____ COMPLETED June 5
 DEPARTURE 84 - W BEARING 324° ULTIMATE DEPTH 1194
 ELEVATION _____ DIP 60° PROPOSED DEPTH _____

DEPTH FEET	FORMATION	SAMPLE NO.	WIDTH OF SAMPLE	GOLD S	ASSAYS		
579-636	Rhyolite tuff- abundant qtz. eyes-very sparse pyrite-a few narrow qtz.string.grey	C.A	-35°	Interbanded pinkish & grey green - Quartz eyes finer and sparser			
636-643	Pyritized tuff			Green coloured-Rhyolite- qtz. Eyes			
643-652	Rhyolite tuff-qtz. eyes-grey						
652-699	Rhyolite tuff-grey color-sericite bands from 686-695- a few minor qtz. -string.-core angle 55° @ 686	Grey - Well banded	C.A -35°				
699-711	Rhyolite tuff- considerable sericite-diss. chalco. 706.3-711.- An eight and one half inch section of almost massive chalco. at 708	Dacitic - Schistose		Some fragments -			
711-776	Tuff-a few fragments- diss. pyrite 746-748 3' lost core at 744 C.A.45° @ 774	Dacitic		Mottled and chloritized			
776-850	Rhyolite tuff- minor diss. pyrite-C.A.45° @ 847			Sparse fragments in places			
850-873	Rhyolite tuff-a few grains of pyrite- some sericite						
873-875	Rhyolite tuff-a few narrow bands of massive pyrite Core angle 45° @ 901						

Logged by Mr. S. Johnson

Revised Comments by Dr. N. S. Beaton

DIAMOND DRILL RECORD

PROPERTY Chimo Gold Mines

HOLE NO. 71-20 (Revised)

SHEET NUMBER 4

SECTION FROM 875 TO 1089

STARTED May 26

LATITUDE 24 - S

DATUM _____

COMPLETED June 5

DEPARTURE 84 - W

BEARING 324°

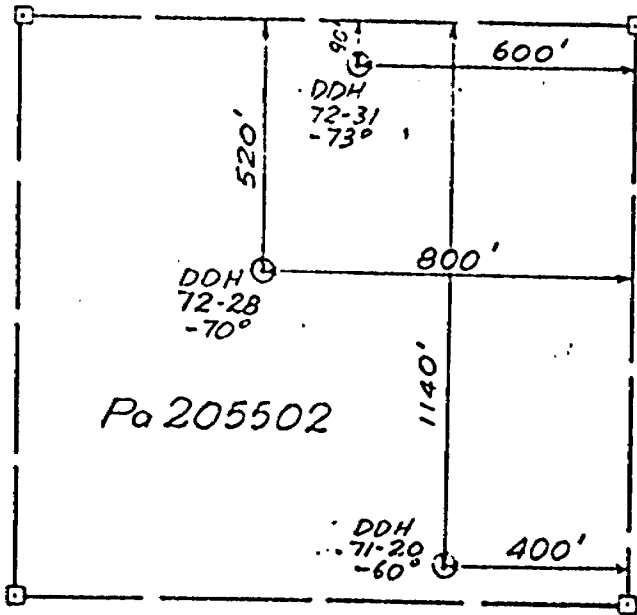
ULTIMATE DEPTH 1194

ELEVATION _____

DIP 60°

PROPOSED DEPTH _____

DEPTH FEET	FORMATION	SAMPLE No	WIDTH OF SAMPLE	GOLD @	SULPHUR @			
875-879.5	Graphite schist-30% pyrite	Pyrite	along bedding					
879.5-921	Rhyolite tuff- minor pyrite -C.A.45° @ 901	aggregates						
921-926.5	Tuff- a few narrow qtz. stringers- a few bands of pyrite	Rhyolite						
936.5-939	Tuff-mottled-very siliceous-increase in pyrite	Rhyolite						
939-940	Qtz. carb.-50% pyrite							
940-942	Andesite-green-minor pyrite	Tuffaceous						
942-947	Dacite-a few grains of pyrite-creamy color	Rhyolite tuff						
947-949.5	Very siliceous-60% pyrite							
949.5-957	Dacite	Rhyolite						
957-993	Rhyolite tuff-a few narrow bands of pyrite-grey- some qtz. eyes Core angle 40° @ 993							
993-996	Rhyolite tuff-light grey							
996-1016.5	Dacite-creamy color	Rhyolite						
1016.5-1065	Rhyolite tuff- a few grains of pyrite- light grey	Tan to light grey						
		C.A.	50°					
1065-1069	Andesite tuff- dark grey							
1069-1089	Rhyolite tuff- no sulphides	Tan						
	Core angle - 30° @ 1085	C.A.	60°					



CONWEST EXPLORATION CO. LTD.
LOCATION MAP

DDH 71-20
DDH 72-28
DDH 72-31

SCALE
1" = 400'
400'

DIAMOND DRILL RECORD

PROPERTY Chimo Gold Mines HOLE NO. 71-21 (Revised)

SHEET NUMBER 1 SECTION FROM 0 TO 277 STARTED June 7
 LATITUDE 24 - S DATUM _____ COMPLETED June 10
 DEPARTURE 74 - W BEARING North ULTIMATE DEPTH _____
 ELEVATION _____ DIP 45° PROPOSED DEPTH _____

DEPTH FEET	FORMATION	SAMPLE NO	WIDTH OF SAMPLE	GOLD %	PLUGS OF GOLD %
0-10	Casing				
10-84	Rhyolite tuff- considerable sericite and carb a few grains of pyrite	30°	Light grey green - Feldspar Crystal tuff in places		
84-156	Rhyolite tuff-interbanded with rhyolite andesite tuff-considerable sericite-a few grey qtz. carb. stringers-very sparse pyrite and pyrrhotite -sparse chalco. at 106 and 114- core angle- 45° @ 100	Dacitic 35°			
156-228	Rhyolite andesite tuff-a few grains of pyrite very few specks of chalco.-minor sericite and carb. Core angle- 45° @ 168	Dacitic - 201			Ghosts of fragments
228-234	Rhyolite andesite tuff- a few grains of pyrite				
234-237	Dacite		Rhyolite -	Greeny tan	
237-277	Rhyolite andesite tuff- a few minor stringers of pyrite- considerable carb. C.A. 35° @ 266	Dacite -	Considerable carbonate & Silicification 45°		

DIAMOND DRILL RECORD

PROPERTY Chimo Gold Mines HOLE NO. 71-21 (Revised)

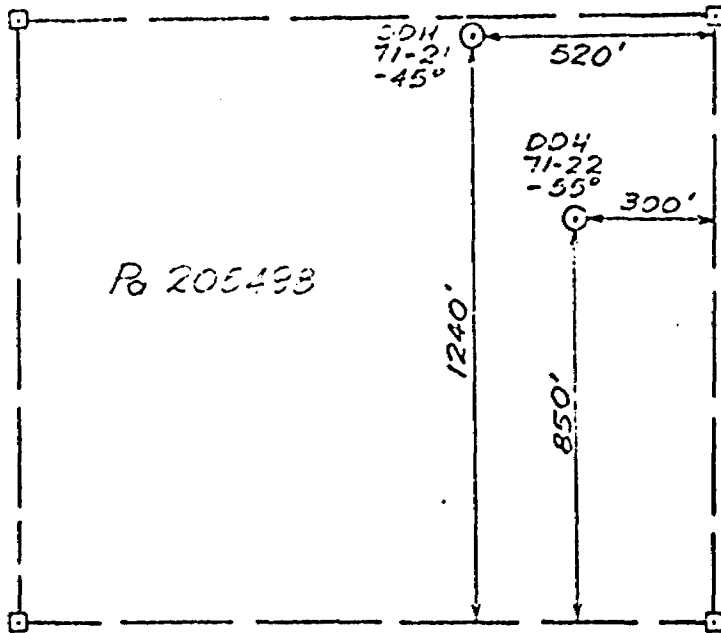
SHEET NUMBER 2 SECTION FROM 277 TO 421 STARTED June 7
 LATITUDE 24 - S DATUM _____ COMPLETED June 10
 DEPARTURE 74 - W BEARING North ULTIMATE DEPTH _____
 ELEVATION _____ DIP 45° PROPOSED DEPTH _____

DEPTH FEET	FORMATION	SAMPLE NO	WIDTH OF SAMPLE	GOLD %	FLURZ OF GOLD
277-289	Tuff- light grey-fine grain-minor pyrite	Dac	tic		
289-292	Tuff-two narrow stringers and sparse diss. of zinc blende-a few grains of chalco.-minor pyrite				
292-301	Fragmental tuff-a few stringers of pyrite	Coarse dark grey fragments in light grey matrix			
301-305.4	Pyrite - 80%				
305.4-311	Graphite schist- 5% pyrite-a few grains of chalco. and zinc	50°			
311-326	Tuff a few narrow massive bands of pyrite-a few specks of chalco.	Dac	tic		
326-331.5	Graphite schist-10% pyrite-a few grains of chalco.	50°			
331.5-345.5	Tuff-50% pyrite-pyrite in vuggy massive bands				
345.5-355	Fragmental tuff-minor pyrite				
355-362.5	Dacite	Rhyolite - Tan	Even grain		
362.5-374	Fragmental tuff- narrow bands blebs and diss. of pyrite- Core angle- 35° @ 369				
374-389.5	Fragmental tuff-a few bands of fine pyrite	Dacitic			
389.5-395.5	Dacite-creamy pink color-no visible qtz. eyes	Rhyolite - Tan			
395.5-421	Tuff-light grey-very minor pyrite-C.A.30° @ 416	Tan grey silicified	Rhyolitic		
421	End of hole.				

U.S.P. TORONTO-STOCK FORM NO 301 REV. 12/51

Logged by Mr. S. Johnson

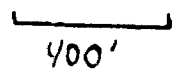
Revised Comments by Dr. N. S. Beaton



CONWEST EXPLORATION CO. LTD.
LOCATION MAP

—> DDH 71-21
DDH 71-22

SCALE
1" = 400'



DIAMOND DRILL RECORD

PROPERTY Chimo Gold Mines

HOLE NO. 71-22 (Revised)

SHEET NUMBER 1 SECTION FROM 0 TO 222 STARTED June 12
 LATITUDE 29 - S DATUM _____ COMPLETED June 14
 DEPARTURE 72 - W BEARING 180° ULTIMATE DEPTH 348
 ELEVATION _____ DIP 55° PROPOSED DEPTH _____

DEPTH FEET	FORMATION	SAMPLE NO	WIDTH OF SAMPLE	GOLD G	PERCENT GOLD		
0- 25	Casing						
25- 53	Rhyolite andesite tuff- sheared and rusty with iron carbonate	Dacitic C.A	50°				
53- 59	Andesite tuff- greyish green						
59- 72	Rhyolite andesite tuff	Dacitic					
72-100	Rhyolite tuff - Core angle 35° @ 97	Tan and light grey-green	60°				
100-103	Rhyolite andesite tuff	Grey					
103-112	Dacite	Rhyolite -	tan, pink streaks				
112-126.5	Rhyolite-speckled with feldspar and qtz. eyes- pinkish grey						
126.5-165	Rhyolite andesite tuff-dark greenish grey feldspar and qtz. eyes	Dacitic					
165-173	Rhyolite tuff-pinkish grey -sheared- slightly magnetic at 173 Core angle 130°@165	Tan with pink streaks	grades to grey-green - 78°				
173-222	Rhyolite andesite tuff-a few qtz. carb. stringers-slightly magnetic in places Core angle 25° @ 218	Dacitic					

N.M.P., TORONTO-STOCK FORM NO 501 REV. 12/51

Logged by Mr. S. Johnson

Revised Comments by Dr. N. S. Beaton

SIGNED

DIAMOND DRILL RECORD

PROPERTY Chimo Gold Mines

HOLE NO. 71-22 (Revised)

SHEET NUMBER 2

SECTION FROM 222 TO 348

STARTED June 12

LATITUDE 29 - S

DATUM _____

COMPLETED June 14

DEPARTURE 72 - W

BEARING 180°

ULTIMATE DEPTH 348

ELEVATION _____

DIP 55°

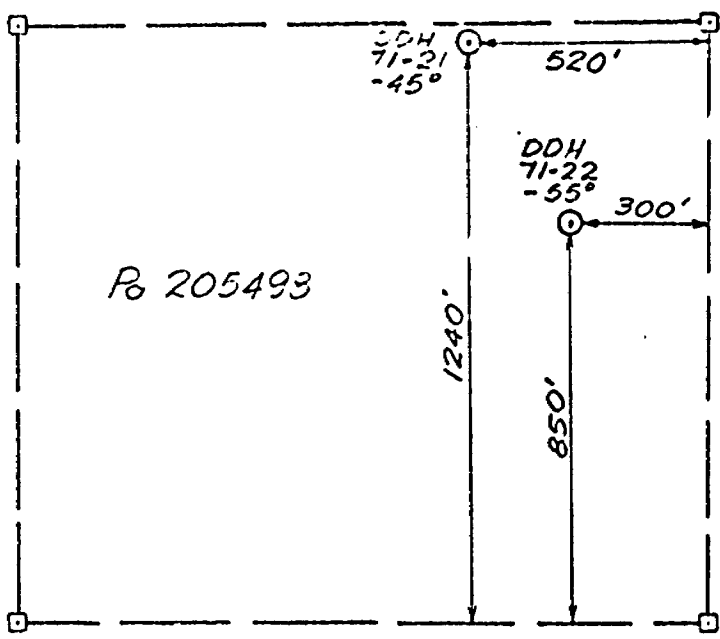
PROPOSED DEPTH _____

DEPTH FEET	FORMATION	SAMPLE NO.	WIDTH OF SAMPLE	GOLD %	BLIND GOLD %		
222-248	Rhyolite tuff- a few grains of pyrite and magnetite		Interbanded pink feldspar grains	tan-pink - light grey with			
248-259	Rhyolite andesite tuff- a few grains of magnetite						
259-295	Andesite tuff-green-some fine qtz. carb. string slightly rusty. Core angle 20° @ 277	Find	even grain	massive			
295-318	Andesite tuff- slightly rusty in places						
318-325	Rhyolite tuff- pinkish grey		70°				
325-348	Rhyolite andesite tuff- a few stringers of qtz. carb.		Dacitic - pink towards base	feldspar grains - becomes			
348	END OF HOLE						

N.M.F. TORONTO-STOCK FORM NO. 501 REV. 12/51

Logged by Mr. S. Johnson

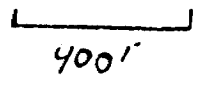
Revised Comments by Dr. N. S. Beaton



CONWEST EXPLORATION CO. LTD.
LOCATION MAP

DDH 71-21
DDH 71-22

SCALE
1" = 400'



DIAMOND DRILL RECORD

PROPERTY Chimo Gold Mines

HOLE NO. 71-23A (Revised)

SHEET NUMBER 1 SECTION FROM 0 TO 292 STARTED June 26
 LATITUDE 24-50 S DATUM _____ COMPLETED June 29
 DEPARTURE 64 W BEARING North ULTIMATE DEPTH 292'
 ELEVATION _____ DIP 70° PROPOSED DEPTH _____

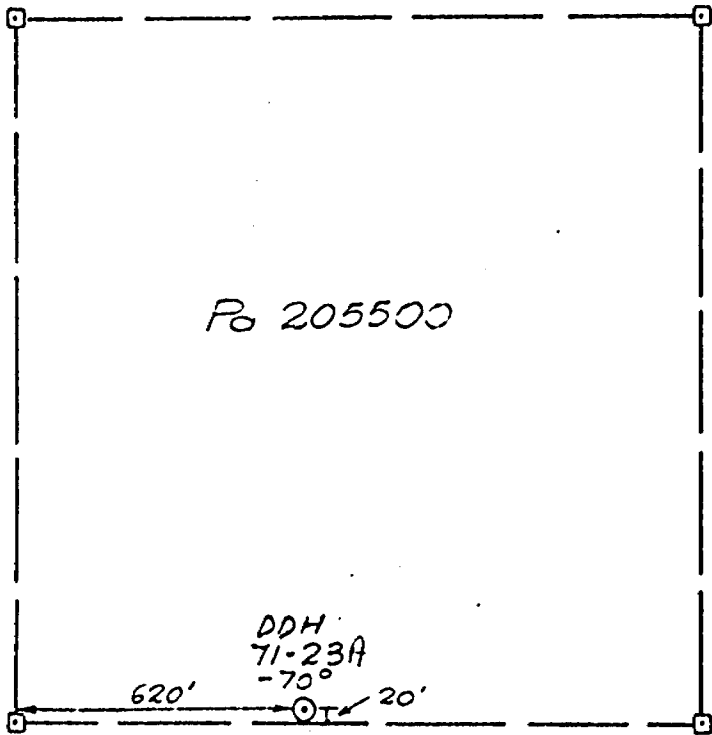
DEPTH FEET	FORMATION	SAMPLE NO	WIDTH OF SAMPLE	GOLD @	SLUDGE GUM @	
0- 62	Casing					
62- 82	Sericite rhyolite tuff					
82-121	Sericite rhyolite tuff- a few grains of pyrite core angle 85° @ 104					
121-192	Sericite rhyolite tuff - blebs and stringers of pyrite in places - very sparse chlorite core angle 75° @ 182					
192-259	Sericite tuff-fragmental- sheared- a few qtz. carb. stringers- blebs and diss. of pyrite Core angles - 65° @ 211- 70° @ 237 - 70° @ 256	207 - 257				
259-292	Sericite carbonate tuff-blebs and diss. of pyrite associated with spots of hornblende or chlorite-considerable carbonate in matrix core angle-70° @ 292 - tube test 68° @ 292					
292	End of Hole					

N.M.P. TORONTO-STOCK FORM NO. 501 REV. 12/51

Logged by Mr. S. Johnson

Revised Comments by Dr. N. S. Beaton

SIGNED



CONWEST EXPLORATION CO LTD.
LOCATION MAP

DDH 71-23A SCALE 1"=400'

400'

DIAMOND DRILL HOLE RECORD

DRILLED BY INSPIRATION DRILLING
 HOLE No. 72-28 LENGTH 649'
 LOCATION Sturgeon Lake, Claim No. 205502 DIP -70°
 GRID LATITUDE 17+95 South DEPARTURE 88100 West
 ELEVATION Sturgeon Lake AZIMUTH 180°
 HOLE STARTED March 11, 1972 COMPLETED March 16, 1972

ACID &/OR TRO-PARI TESTS

FOOTAGE	DIP	AZIMUTH	FOOTAGE	DIP	AZIMUTH
200	-50°				
400	-33°				
600	-27°				

FILE No. _____
 PROPERTY Chimo Claims
 HOLE No. 72-28 SHEET No. 1 of 7
 CORE SIZE AQ Wireline
 % CORE RECOVERY 100%
 LOGGED BY J. R. Allan

FOOTAGE				DESCRIPTION	SAMPLE						REMARKS	
FROM	TO	WIDTH	RCVRY		No.	% SULFIDES	FROM	TO	WIDTH	RCVRY		
0	45	45		STURGEON LAKE								
45	80	35	Nil	CASING - Overburden								
80	246.1	166.1	100%	RHYOLITE TUFF; very fine grained, white to light grey, moderately sericitic, well foliated, quite fissile, accessory fine grained disseminated flakes of hornblende. Contains about 1% quartz eyes, most less than 1/16" occasional up to 3/16". Limonite staining on occasional fracture. Traces of disseminated, medium to coarse-grained pyrite with only rare specks of associated chalcopyrite. Foliation 87° - 39° to c.s. " 107° - 41° " " 147° - 43° " " 167° - 49° " " 176° - 58° " " 228° - 58° " " 248° - 61° " 90 - 91.6' Slightly fragmental. About 10% partly assimilated and stretched fragments in a weakly chloritic matrix. 98.9-99.7 Slightly vesicular, darker grey, no quartz phenos								

DIAMOND DRILL HOLE RECORD

DRILLED BY _____
 HOLE No. 72-28 LENGTH _____
 LOCATION _____ DIP _____
 LATITUDE _____ DEPARTURE _____
 ELEVATION _____ AZIMUTH _____
 HOLE STARTED _____ COMPLETED _____

ACID &/OR TRO-PARI TESTS

FOOTAGE	DIP	AZIMUTH	FOOTAGE	DIP	AZIMUTH

FILE No. _____
 PROPERTY _____
 HOLE No. 72-28 SHEET No. 4 of 7
 CORE SIZE _____
 % CORE RECOVERY _____
 LOGGED BY [Signature]

FOOTAGE				DESCRIPTION	SAMPLE				ASSAYS						
FROM	TO	WIDTH	RCVRY		No.	% SULFIDES	FROM	TO	WIDTH	RCVRY	Au	Ag	Cu	Zn	
				on fractures (increase in graphite content down unit) Unit weakly brecciated.											
				Several shattered secondary quartz veinlets.											
				Rhyolite contains about 5% quartz phenos. (1/6" to 1/4"). Cross-cutting out contact.											
				342.7-343.6 Medium grained, light green, with very fine grained quartz phenos. Contains 3 to 4% disseminated blebs of pyrite.											
				343.6-346.9 About 60% graphite as massive seams and 10% pyrite as fine grained seams and blebs. Traces limonite.											
				346.9-353.1 Very fine grained quartz phenocrysts. 5% pyrite as scattered seams.											
				353.1-361.7 Most quartz phenos < 1/8", occasional to 3/16".											
363.7	380.0	16.3	100%	RHYOLITE FRAGMENTAL (or breccia); about 5% lapilli sized fragments of cherty rhyolite in a moderately sericitic and weakly chloritic matrix (occasional seam of chlorite). Fragments become less distinct down unit. Occasional stringer of secondary quartz.											
				Foliation @ 377' - 70° to e.n.											
				364.6 - 368.9 About 50% pyrite as massive, fine grained seams and blebs. Traces of limonite, often enclosed within the pyrite.	1417	50%	364.6	368.9	4.3	100%	0.04	0.42	0.07	0.20	

DIAMOND DRILL HOLE RECORD

DRILLED BY _____
 HOLE No. 72-28 LENGTH _____
 LOCATION _____ DIP _____
 LATITUDE _____ DEPARTURE _____
 ELEVATION _____ AZIMUTH _____
 HOLE STARTED _____ COMPLETED _____

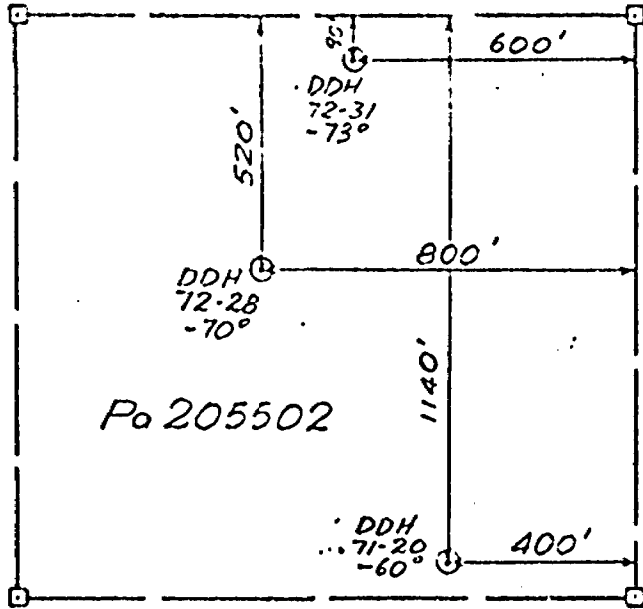
ACID &/OR TRO-PARI TESTS

FOOTAGE	DIP	AZIMUTH	FOOTAGE	DIP	AZIMUTH

FILE No. _____
 PROPERTY _____
 HOLE No. 72-28 SHEET No. 5 of 7
 CORE SIZE _____
 % CORE RECOVERY _____
 LOGGED BY [Signature]

FOOTAGE				DESCRIPTION	SAMPLE						ASSAYS			
FROM	TO	WIDTH	RCVRY		No.	% CHLORIDES	FROM	TO	WIDTH	RCVRY				
				368.9 - 380.0	About 5% pyrite as scattered seams and disseminated. Pyrite content decreasing to 1% by end of unit.									
				Gradational out contact.										
390	420	40	100%	DACITE TUFF: light grey to light pink, fine grained becoming coarser down unit. Sericitic, well foliated trace chlorite and disseminated flecks of hornblende. Very sparse quartz phenos (< 1/16"). Traces disseminated pyrite and rare seam. Foliation @ 399' - 70° to c.a.										
				406.1 - 406.2	Cross-cutting stringer of very fine grained pink dacite. Accessory very fine grained, disseminated flecks of hornblende.									
				409.9 - 411.9	Same as 406.1 - 406.2; cross-cutting orientation.									
				Gradational out contact.										
420	532.8	112.8	100%	RHYOLITE TUFF: aphanitic to very fine grained, moderately to strongly sericitic. Occasional quartz phenos 1/16" to 1/8"; very rare to 3/16". Variable coloration, pink and green.										
				420 - 432.6	Porphyroblastic, with 5% chloritoid to 1/4" Occasional chlorite seam. Gradational out contact. Porphyroblasts decrease to 1/16 to 1/8".									

pyrite very sparse in this unit.



N

CONWEST EXPLORATION CO. LTD.
LOCATION MAP

DDH 71-20
~~DDH 72-28~~
 DDH 72-31

SCALE
 1" = 400'
 400'

DIAMOND DRILL HOLE RECORD

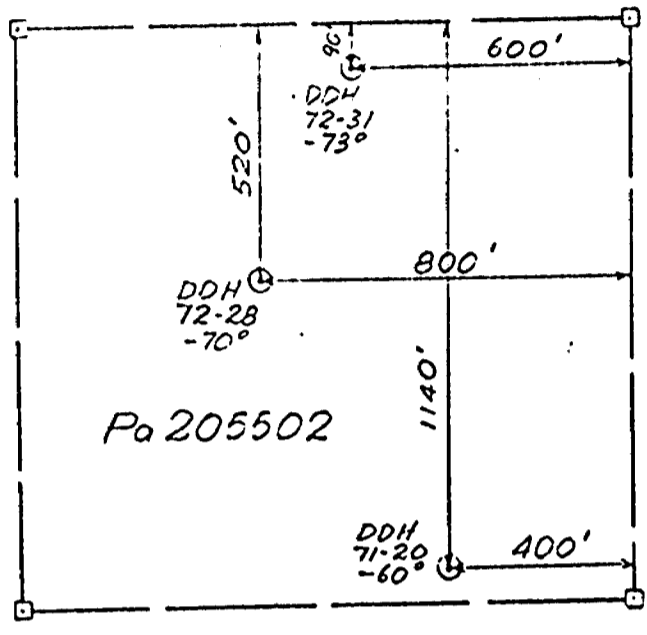
DRILLED BY _____
 HOLE No. 72-31 LENGTH _____
 LOCATION _____ DIP _____
 GRAZING ANGLE _____ DEPARTURE _____
 ELEVATION _____ AZIMUTH _____
 HOLE STARTED _____ COMPLETED _____

ACID &/OR TRO-PARI TESTS

FOOTAGE	DIP	AZIMUTH	FOOTAGE	DIP	AZIMUTH

FILE No. _____
 PROPERTY _____
 HOLE No. 72-31 SHEET No. 8 of 13
 CORE SIZE _____
 % CORE RECOVERY _____
 LOGGED BY _____

FOOTAGE				DESCRIPTION	SAMPLE						ASSAYS			
FROM	TO	WIDTH	RCVRY		No.	%	FROM	TO	WIDTH	RCVRY				
				592.3 - 593.5	Rhyolite fragment (?); very fine grained, pink about 2% pyrite as fine grained seams in chlorite laminae. Gradational out contact.									
597.4	623.8	26.4	100%		QUARTZ PORPHYRY (Same as 445 - 497', except only traces disseminated hornblende) Numerous quartz phenocrysts 1/8" to 3/16" Foliation @ 607' - 78° to c.a. " @ 618' - 74° to c.a. Sharp out contact.									
623.8	625.3	1.5	100%		TUFF BRECCIA (DACITIC) Same as 550 - 597.4 Traces of fine grained disseminated hornblende, increasing to about 4% by end of unit. Increasingly chloritic down unit. Gradational out contact.									
625.3	632	6.7	100%		RHYOLITE TUFF: very fine grained, light brown to pink, occasional quartz phenocryst (most < 1/16"). Foliation @ 632' - 80° to c.a. Sharp out contact.									
632	636.1	4.1	100%		RHYOLITE (INTRUSIVE?); medium grained, pale pink, massive, structureless. No quartz phenocrysts. Comprised of about 90% feldspar, < 10% quartz. Cut by several narrow, irregular quartz & quartz-carbonate veinlets. Contacts weakly sheared & foliated over 1".									
636.1	636.8	0.7	100%		DACITE TUFF: fine grained, dark grey, moderately sericitic, well foliated, occasional quartz phenocryst to 1/16". Band contains about 2% magnetite as laminae. Sharp out contact.									



CONWEST EXPLORATION CO. LTD.
LOCATION MAP

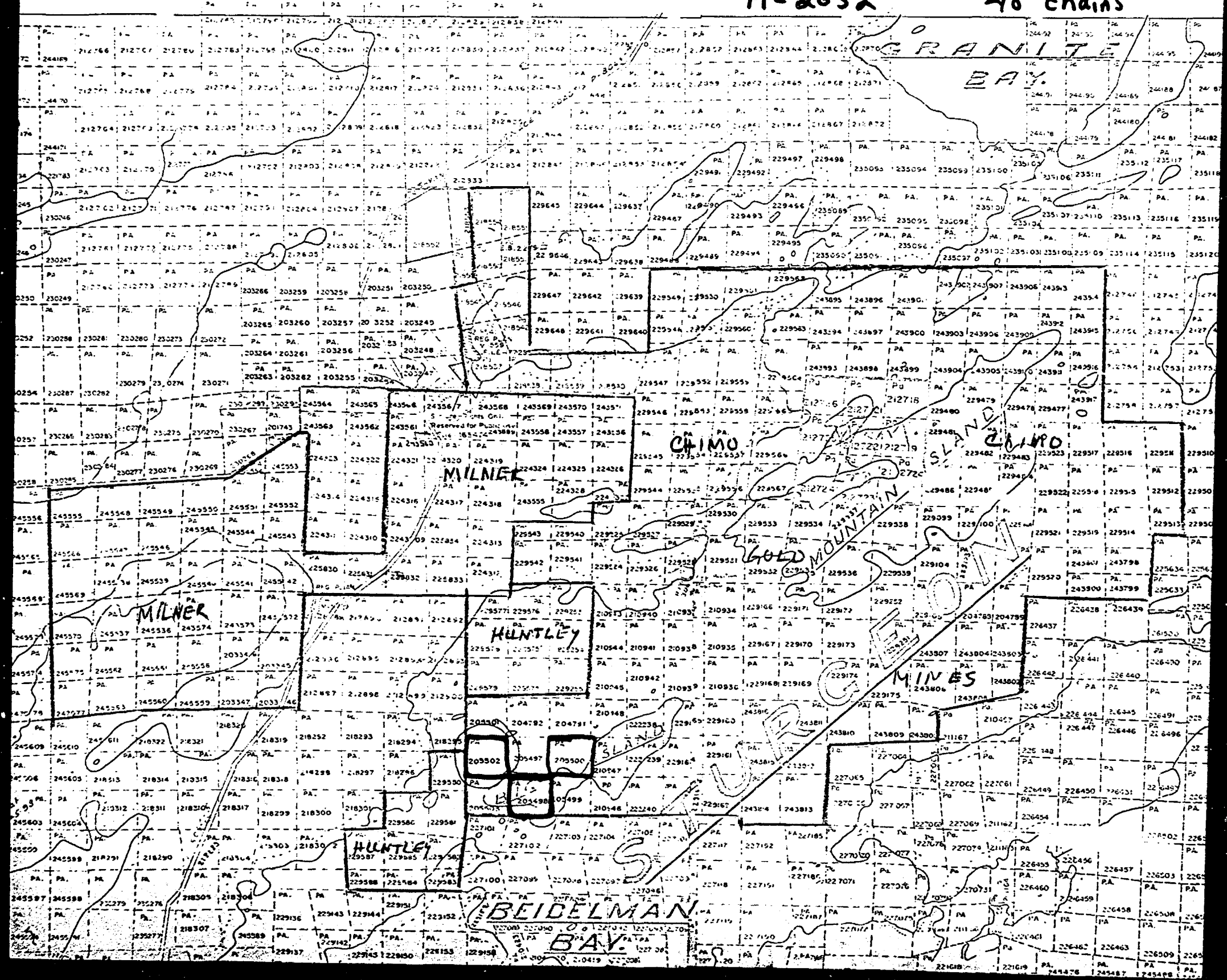
DDH 71-20
DDH 72-28
DDH 72-31

SCALE
1" = 400'
400'

Scale 40 chains to an inch.
PENASSI LAKE AREA.

Valora LK
S2G/14SE
M-2052

Scale
40 chains



Drill Holes for which Core Samples are Stored

Hole No.	Sample	Footage
71-15 (cont'd)	32	657'
	33	684'
	34	698'
	35	721'
	36	750'
	37	774'
	38	792'
	39	820'
	40	857'
	41	867'
	42	874'
	43	897'
	44	916'
	<hr/>	
71-16	1	80'
	2	107'
	3	125'
	4	153'
	5	177'
	6	194'
	7	227'
	8	252'
	9	275'
	10	299'
	11	316'
	12	317'
	13	357'
	14	362'
	15	382'
	16	399'
	17	468'
	18	493'
	19	514'
	20	537'
	21	557'
	22	578'
	23	677'
	24	681'
	25	699'
	26	657'
	27	679'
	28	713'
	29	715'
	30	737'
	31	779' 5"
	32	807'
	33	835'
	34	861'
	35	884'
	36	936'
	37	965'
	38	985'
	39	1006'
40	?	
<hr/>		
71-17	1	82'
	2	104'
	3	137'
	4	190'
	5	216'
	6	240'
	7	265'
	8	277'
	9	302'
	10	328'

Hole No.
71-17 (cont'd)

Samples

Footage

11	353'
12	386'
13	412'
14	436'
15	458'
16	483'
17	507'
18	531'
19	557'
20	580'
21	604'
22	630'
23	650'
24	677'
25	702'
26	726'
27	751'
28	766'
29	802'
30	825'

71-19

1	131'
2	178'
3	202'
4	224'
5	251'
6	276'
7	301'
8	324'
9	349'
10	372'
11	395'
12	420'
13	444'
14	464'
15	491'
16	512'
17	543'
18	565'
19	590'
20	627'
21	638'
22	668'
23	686'
24	707'
25	710'
26	735'
27	760'
28	785'
29	808'
30	835'

Hole No.
71-20

Samples

Footage

1	74'
2	99'
3	122'
4	146'
5	170'
6	194'
7	217'
8	241'
9	246'
10	288'
11	313'
12	337'
13	361'
14	386'
15	410'
16	434'
17	459'
18	482'
19	508'
20	531'
21	555'
22	579'
23	603'
24	627'
25	652'
26	676'
27	699'
28	724'
29	752'
30	776'
31	801'
32	825'
33	850'
34	875'
35	898'
36	921'
37	945'
38	968'
39	993'
40	1017'
41	1041'
42	1065'
43	1089'
44	1114'
45	1139'
46	1164'
47	1188'
48	1194'

71-21

1	35'
2	60'
3	84'
4	108'
5	132'
6	156'
7	180'
8	204'
9	228'
10	253'
11	271'
12	301'
13	326'
14	351'
15	374'
16	399'
17	421'

Hole No.
71-22

Samples

Footage

1	27'
2	76'
3	100'
4	124'
5	148'
6	173'
7	192'
8	222'
9	245'
10	270'
11	295'
12	320'
13	343'

71-23

1	82'
2	104'
3	147'
4	169'
5	192'
6	237'
7	259'
8	213'
9	282'
10	291'
11	?

71-24

1	31'
2	56'
3	78'
4	103'
5	127'
6	151'
7	175'
8	199'
9	223'
10	237'
11	247'
12	272'
13	296.5'
14	322'
15	347'
16	371'
17	396'
18	420'
19	445'
20	466'
21	493'
22	518'
23	543'
24	569'
25	593'
26	617'
27	642'
28	667'
29	693'
30	718'
31	743'
32	767'
33	791'
34	807'

Chimo Gold Mines Limited

Chimo Gold Mines Limited

Location of Diamond Drilling Apparatus

No.	Date	Description	Amount	Total	No.	Date	Description	Amount	Total
1	1/15/46		20	20	1	1/15/46		20	20
2	1/15/46		20	40	2	1/15/46		20	40
3	1/15/46		20	60	3	1/15/46		20	60
4	1/15/46		20	80	4	1/15/46		20	80
5	1/15/46		20	100	5	1/15/46		20	100
6	1/15/46		20	120	6	1/15/46		20	120
7	1/15/46		20	140	7	1/15/46		20	140
8	1/15/46		20	160	8	1/15/46		20	160
9	1/15/46		20	180	9	1/15/46		20	180
10	1/15/46		20	200	10	1/15/46		20	200
11	1/15/46		20	220	11	1/15/46		20	220
12	1/15/46		20	240	12	1/15/46		20	240
13	1/15/46		20	260	13	1/15/46		20	260
14	1/15/46		20	280	14	1/15/46		20	280
15	1/15/46		20	300	15	1/15/46		20	300
16	1/15/46		20	320	16	1/15/46		20	320
17	1/15/46		20	340	17	1/15/46		20	340
18	1/15/46		20	360	18	1/15/46		20	360
19	1/15/46		20	380	19	1/15/46		20	380
20	1/15/46		20	400	20	1/15/46		20	400
21	1/15/46		20	420	21	1/15/46		20	420
22	1/15/46		20	440	22	1/15/46		20	440
23	1/15/46		20	460	23	1/15/46		20	460
24	1/15/46		20	480	24	1/15/46		20	480
25	1/15/46		20	500	25	1/15/46		20	500
26	1/15/46		20	520	26	1/15/46		20	520
27	1/15/46		20	540	27	1/15/46		20	540
28	1/15/46		20	560	28	1/15/46		20	560
29	1/15/46		20	580	29	1/15/46		20	580
30	1/15/46		20	600	30	1/15/46		20	600
31	1/15/46		20	620	31	1/15/46		20	620
32	1/15/46		20	640	32	1/15/46		20	640
33	1/15/46		20	660	33	1/15/46		20	660
34	1/15/46		20	680	34	1/15/46		20	680
35	1/15/46		20	700	35	1/15/46		20	700
36	1/15/46		20	720	36	1/15/46		20	720
37	1/15/46		20	740	37	1/15/46		20	740
38	1/15/46		20	760	38	1/15/46		20	760
39	1/15/46		20	780	39	1/15/46		20	780
40	1/15/46		20	800	40	1/15/46		20	800
41	1/15/46		20	820	41	1/15/46		20	820
42	1/15/46		20	840	42	1/15/46		20	840
43	1/15/46		20	860	43	1/15/46		20	860
44	1/15/46		20	880	44	1/15/46		20	880
45	1/15/46		20	900	45	1/15/46		20	900
46	1/15/46		20	920	46	1/15/46		20	920
47	1/15/46		20	940	47	1/15/46		20	940
48	1/15/46		20	960	48	1/15/46		20	960
49	1/15/46		20	980	49	1/15/46		20	980
50	1/15/46		20	1000	50	1/15/46		20	1000
51	1/15/46		20	1020	51	1/15/46		20	1020
52	1/15/46		20	1040	52	1/15/46		20	1040
53	1/15/46		20	1060	53	1/15/46		20	1060
54	1/15/46		20	1080	54	1/15/46		20	1080
55	1/15/46		20	1100	55	1/15/46		20	1100
56	1/15/46		20	1120	56	1/15/46		20	1120
57	1/15/46		20	1140	57	1/15/46		20	1140
58	1/15/46		20	1160	58	1/15/46		20	1160
59	1/15/46		20	1180	59	1/15/46		20	1180
60	1/15/46		20	1200	60	1/15/46		20	1200
61	1/15/46		20	1220	61	1/15/46		20	1220
62	1/15/46		20	1240	62	1/15/46		20	1240
63	1/15/46		20	1260	63	1/15/46		20	1260
64	1/15/46		20	1280	64	1/15/46		20	1280
65	1/15/46		20	1300	65	1/15/46		20	1300
66	1/15/46		20	1320	66	1/15/46		20	1320
67	1/15/46		20	1340	67	1/15/46		20	1340
68	1/15/46		20	1360	68	1/15/46		20	1360
69	1/15/46		20	1380	69	1/15/46		20	1380
70	1/15/46		20	1400	70	1/15/46		20	1400
71	1/15/46		20	1420	71	1/15/46		20	1420
72	1/15/46		20	1440	72	1/15/46		20	1440
73	1/15/46		20	1460	73	1/15/46		20	1460
74	1/15/46		20	1480	74	1/15/46		20	1480
75	1/15/46		20	1500	75	1/15/46		20	1500
76	1/15/46		20	1520	76	1/15/46		20	1520
77	1/15/46		20	1540	77	1/15/46		20	1540
78	1/15/46		20	1560	78	1/15/46		20	1560
79	1/15/46		20	1580	79	1/15/46		20	1580
80	1/15/46		20	1600	80	1/15/46		20	1600
81	1/15/46		20	1620	81	1/15/46		20	1620
82	1/15/46		20	1640	82	1/15/46		20	1640
83	1/15/46		20	1660	83	1/15/46		20	1660
84	1/15/46		20	1680	84	1/15/46		20	1680
85	1/15/46		20	1700	85	1/15/46		20	1700
86	1/15/46		20	1720	86	1/15/46		20	1720
87	1/15/46		20	1740	87	1/15/46		20	1740
88	1/15/46		20	1760	88	1/15/46		20	1760
89	1/15/46		20	1780	89	1/15/46		20	1780
90	1/15/46		20	1800	90	1/15/46		20	1800
91	1/15/46		20	1820	91	1/15/46		20	1820
92	1/15/46		20	1840	92	1/15/46		20	1840
93	1/15/46		20	1860	93	1/15/46		20	1860
94	1/15/46		20	1880	94	1/15/46		20	1880
95	1/15/46		20	1900	95	1/15/46		20	1900
96	1/15/46		20	1920	96	1/15/46		20	1920
97	1/15/46		20	1940	97	1/15/46		20	1940
98	1/15/46		20	1960	98	1/15/46		20	1960
99	1/15/46		20	1980	99	1/15/46		20	1980
100	1/15/46		20	2000	100	1/15/46		20	2000

