



52G14SE0039 52G14SE0016 VALORA LAKE

010

Diamond Drilling

Area of Valora Lake

Report NO 24

Work performed by: Scurry-Rainbow Oil Ltd.

Claim NO	Hole NO	Footage	Date	Note
PA 47107	BC-1	497'	Mar/70	(1)
	BC-11-C	366'	June/70	(1)
PA 47105	BC-2	426'	Apr/70	(1)
	BC-3A	703'	Apr/70	(1)
PA 47101	BC-4	596'	Apr/70	(1)

Total: - 5 DH 2588'

Notes: (1) 408/70

Drill Hole Log

COMPANY SCURRY-RAINBOW OIL LIMITED PROPERTY BRIAR-COURT, ONTARIO Section No. HOLE No. BC-1

Started March 26, 1970	Bearing N40°W	Lat. <u> </u>	Collar El. <u> </u>	Logged by <u>W.C.C.</u>	Date April 3, 1970
Completed <u> </u>	Angle from Horiz. 50°	Dep. <u> </u>	Bottom El. <u> </u>	Remarks <u> </u>	
Driller <u>Midwest</u>	Length <u> </u>	Location Line <u>0+00</u>	Level <u> </u>		

Footage		Interval	RECOVERY		Graphic Log	DESCRIPTION	Sample No.	From-To	Interval	ASSAY			
From	To		Fl.	%						Cu	Ag	Au	Zn
0	68	OB	-	-		<u>0 - 68</u>	2501	68 - 70	2.0	.03	.69	tr	
						Overburden - boulders, sand, gravel. Boulders to 7 feet in diameter.	2502	70 - 75	5.0	.03	.05	"	
							2503	75 - 80	5.0	.04	.70	"	
							2504	80 - 85	5.0	.03	.30	"	
68	86	17.5	17.5			<u>68 - 85</u>	2505	85 - 90	5.0	.03	2.2	"	.01
						Dark gray to greenish gray amphibolitic rock (greenstone) aphanitic to coarse grained in intermittent patches.	2506	90 - 95	5.0	.04	1.00	"	.02
							2507	95 - 100	5.0	.03	.22	"	
							2508	100 - 105	5.0	.05	2.6	"	
86	96	10	10			Pyrite disseminated and tight fracture fillings locally to 15%. Sparse minute disseminated chalcopyrite. Possible minute widely scattered blebs of sphalerite.	2509	105 - 108	3.0	.03	.20	"	
96	106	10	10			<u>85 - 130</u>							
						Coarse grained greenstone - disseminated pyrite steadily diminishing in abundance. Scattered tight fracturing at 30/40° to core							
						<u>130 - 157</u>							
						Coarse grained greenstone - sparse pyrite disseminations. No visible chalcopyrite. Greenstone finer toward the bottom							

Drill Hole Log

COMPANY SCURRY-RAINBOW OIL LIMITED

PROPERTY BRIAR-COURT, ONTARIO

Section No.

HOLE No. BC-1

Started	March 26, 1970	Bearing	N40°W	Lat.	Collar El.	Logged by	R.D.	Date	April 4, 1970
Completed		Angle from Horiz.		Dep.	Bottom El.	Remarks			
Driller	Midwest	Length		Location	Line 0+00	Level			

Footage		Interval	RECOVERY		Graphic Log.	DESCRIPTION	Sample No.	From-To	Interval	ASSAY				
From	To		Fl.	%						Au	Ag	Cu	Zn	Ni
157	161	10	10			Same greenstone, coarser grains with few feldspar seams (40% with the core). Few disseminated pyrite specks, no samples	2510	161 - 166	5.0	Tr	.24	.10	--	--
							2511	166 - 171	5.0	Tr	1.14	.38	--	.07
							2512	171 - 176	5.0	Tr	.24	.06	--	--
							2513	176 - 181	5.0	Tr	.76	.26	--	.05
161	191	10	10			Same greenstone - medium grains pyrite - pyrrhotite 5%, Chalcopyrite 1% - samples. A little bit of shearing with chalcopyrite at 169'. Quartz vein 2" thick just above.	2514	181 - 186	5.0	TR	.40	.45	--	.07
							2515	186 - 191	5.0	Tr	.52	.30	--	.03
							2516	191 - 196	5.0	Tr	.74	.65	--	.33
							2517	196 - 200	4.0	Tr	.38	.34	--	.03
							2516	191 - 196	5.0		Ni also	(see above)		
191	197	10	10			Very fine greenstone; more Pyrrhotite, approx. 30%; more chalcopyrite, approximately 5%; some shearing zones approximately 40%								
							2518	200 - 205		Tr	.22	.55	--	.15
							2519	205 - 210		Tr	.20	.34	--	.08
197	210	10	10			Coarser greenstone, less mineralized, no more pyrrhotite, increasing chalcopyrite; approximately 2 some shear inclined	2520	210 - 215		Tr	.20	.21	--	--

Drill Hole Log

COMPANY SCURRY-RAINBOW OIL LIMITED PROPERTY BRIAR-COURT, ONTARIO Section No. HOLE No. BC-1

Started	March 26, 1970	Bearing	N40°W	Lat.	Collar El.	Logged by	R.D.	Date	April 5, 1970
Completed		Angle from Horiz.	50°	Dep.	Bottom El.	Remarks			
Driller	Midwest	Length		Location	Line 0+00	Level			

Footage		Interval	RECOVERY		Graphic Log	DESCRIPTION	Sample No.	From-To	Interval	ASSAY			
From	To		Fl.	%						Au	Ag	Cu	Zn
210	217	10	10			Dark gray, well banded rock; very fine grains; probably slate disseminated pyrite; do not see any other minerals							
217	256	10	10			Greenstone coarse grains; very light, 30% feldspar, trace of pyrite; no other mineralization; slate layer at 222'							
256	258	5	5			Very rhyolitic band with disseminated pyrite and chalcopyrite	2521	251 - 256	5.0	<i>Examined and with sending for assay</i>			
							2522	256 - 261	5.0				
							2523	261 - 266	5.0				
258	265	5	5			Dark layer of fine slate, disseminated pyrite, sharp contact with greenstone at bottom; greenstone layer (263)							
265	280					Greenstone not mineralized; medium grains identical to above - epidote							

Drill Hole Log

COMPANY SCURRY-RAINBOW OIL LIMITED

PROPERTY BRIAR-COURT, ONTARIO

Section No.

HOLE No. BC-1

Started March 26, 1970	Bearing N40°W	Lat.	Collar EL.	Logged by R.D.	Date April 5, 1970
Completed April 6, 1970	Angle from Horiz. 50°	Dep.	Bottom EL.	Remarks	
Driller Midwest	Length 4.97'	Location	Level		

Footage		Interval	RECOVERY		Graphic Log	DESCRIPTION	Sample No.	From-To	Interval	ASSAY	
From	To		Ft.	%							
280	301	10	10			Dark grey finer greenstone, more epidote breaks almost parallel to core axis, no visible cleavage, amphibole-biotite numerous, feldspar veinlets no mineralization					
301	327	10	10			Lighter and coarser greenstone; no more veins, no mineralization					
327	386	10	10			Black fine grains mafic rocks, very massive, a few feldspar stringers (1/8" wide); disseminated pyrite - 10%; slightly magnetic					
386	395	10	10			Green coarser grains greenstone, 50% feldspar identical to (96 - 106); no pyrite					

Drill Hole Log

COMPANY SCURRY-RAINBOW OIL LIMITED PROPERTY BRIAR-COURT, ONTARIO Section No. HOLE No. BC-1

Started March 26/70	Bearing N40°W	Lat.	Collar El.	Logged by R.D.	Date April 6, 1970
Completed April 6, 1970	Angle from Horiz. 50°	Dep.	Bottom El.	Remarks	
Driller Midwest	Length 497'	Location	Level		

Footage		Interval	RECOVERY		Graphic Log	DESCRIPTION	Sample No.	From-To	Interval	ASSAY		
From	To		Ft.	%								
395	412	10	10			Darker greenstone, dark minerals 70% still coarse grains pyrite 1%; quartz vein (2") (397.5 pyrite)						
412	440	10	10			Very fine grains mafic disseminated pyrite - 1% cleavage at 60° with core						
440	453	10	10			Light greenish, coarse grains. Mettagabbro 20% amphibole and pyroxene, 80% feldspar; no mineralization						
485	495	10	10			Fine grain mafic volcanic with mettagabbro at 485, chlorite pyroxene						
495	497	2	2			Mettagabbro identical to previous one; not mineralized 497' End of Hole, angle reading 65° True angle approximately 58°						

Drill Hole Log

COMPANY Scurry-Rainbow Oil Limited PROPERTY Briar Court, Ontario Section No. _____ HOLE No. B. C. 2

Started April 7, 1970 Bearing N 40 W Lat. _____ Collar EL. _____ Logged by G. Fina Date April 10, 1970
 Completed April 13, 1970 Angle from Horiz. 50° Dep. _____ Bottom EL. _____ Remarks _____
 Driller Mid-West Length 426 Location Line 6+00S Level _____

Footage		Interval	RECOVERY		Graphic Log.	DESCRIPTION	Sample No.	From-To	Interval	ASSAY			
From	To		Ft.	%						Cu	Ag	Au	Zn
0	47	O. B.				Overburden-boulders, sand, gravel, boulders to 5' in diameter							
47	67	20	20			Light green (47-52) to dark greenish grey amphibolitic rock (greenstone): Fine to coarse grained in intermittent patches: minor disseminated pyrite with very sparse minute disseminated cpy. fracture filling locally. Slightly magnetic with possibly minute plebs of cordierite.	2524	57-62	5'	Examined-not worth			
							2525	62-67	5'	sending for assay			
67	87	20	20			Fine-grained greenstone with qtz. fracture fillings: Becoming more gabbroic towards the end.	2526	77-82	5'	"	"	"	
							2527	82-87	5'	"	"	"	
							2528	87-92	5'	"	"	"	
							2529	92-97	5'	"	"	"	
87	108	21	21			Light green coarse grained metagabbro: Minor tight fracturing: moderately sheared pyr. disseminated: Sparse blebs of disseminated cpy. Possibly minute widely scattered blebs of sphalerite (?) Highly	2530	102-107	5'	"	"	"	
							2531	107-112	5'	"	"	"	

Drill Hole Log

COMPANY Scurry-Rainbow Oil Limited

PROPERTY Briar Court, Ontario

Section No.

HOLE No. B. C. ?

Started April 7, 1970	Bearing N 40W	Lat.	Cellar El.	Logged by G. Finn	Date April 10, 1970
Completed April 13, 1970	Angle from Horiz. 50°	Dep.	Bottom El.	Remarks	
Driller Mid-West	Length 426	Location Line 6400S	Level		

Footage		Interval	RECOVERY		Graphic Log.	DESCRIPTION	Sample No.	From-To	Interval Ni	ASSAY				
From	To		Ft.	%						Cu	Ag	Au	Zn	
						magnetic. Fine-grained andesite dyke (97-102). Dip 70°. Minor fracturing pyrite disseminated. Grading into intermediate greenstone at the end.								
108	136	26	26			Intermediate coarse-grained greenstone: minor tight fracturing, local filling: Pyr. moderately disseminated: Blue cordierite also presented.	2532	112-117	5' --	.11	.42	Tr	.005	
							2533	117-122	5'	.02	.10	.22	Tr	.005
							2534	122-127	5'					
							2535	127-132	5'	.04	.17	.22	Tr	.01
136	154	18	18			Light-greenish, coarse-grained meta-gabbro: Minor tight fracturing, localized filling material: (151-153)	2536	132-136	4'	Examined-not worth sending for assay				
154	177	18	17	90		Qtz-rich zone bordered by rhyolite banding Pyr. disseminated, with scattered blebs of cyp. Slightly magnetic. Fine to medium grained dark grayish greenstone (possibly andesite): Short gradational contact: very micaceous.	2537	136-141	5'	"	"	"		
							2538	141-146	5'	"	"	"		
							2539	146-151	5'	"	"	"		
							2540	151-155	4'	"	"	"		
						Fine-grained disseminated pyrite. Scattered blebs of bluish cordierite. Possibly rich in fine-grained sphalerite minor fracturing	2541	155-160	5'	"	"	"		
							2542	160-165	5'	"	"	"		
							2543	165-170	5'	"	"	"		
							2544	170-173	3'	"	"	"		

Drill Hole Log

COMPANY Scurry-Rainbow Oil Limited

PROPERTY Briar Court, Ontario

Section No.

HOLE No. B. C.

Started April 7, 1970	Bearing N 50W	Lat.	Collar El.	Logged by G. Finn	Date April 12, 1970
Completed April 13, 1970	Angle from Horiz. 50	Dep.	Bottom El.	Remarks	
Driller Mid-West	Length 426	Location	Level		

Footage		Interval	RECOVERY		Graphic Log	DESCRIPTION	Sample No.	From-To	Interval	ASSAY			
From	To		Ft.	%						Cu	Ag	Au	Zn
172	198	26	26			Sharp contact Light-green metagabbro, with intermittent zones of rich white plag. minor fracturing pyr. disseminated, with scattered blebs of cyp. Some blue cordierite is also present							
198	228	30	30			Med. fine grained greenstone (216-232): showing very tight falping and fracturing with qtz. filling and rich in chlorite pyr. disseminated with minor pyrrhotite: scatter blebs of cyp. throughout: Plus minor amounts of magnetite. Transitional zone.	2551	228-234	6'	Examined-not worth sending for assay			
228	234	6	6			Intermediate zone of meta-gabbro: coarse-grained pyr. disseminated: slightly magnetic							
234	266	32	32			Massive fine-grained greenstone with an intermediate zone (251-57) of coarse-grained metagabbro: Minor fracturing: Pyr. disseminated: Magnetite sporadic: No visible signs of cyp.	2552	246-251	5'	"	"	"	
							2553	256-261	5'	"	"	"	

Drill Hole Log

COMPANY Scurry-Rainbow Oil Limited

PROPERTY Briar Court, Ontario

Section No.

HOLE No. B. C. 2

Started April 7, 1970	Bearing N 50 W	Lat.	Collar El.	Logged by G. Finn	Date April 12, 1970
Completed April 13, 1970	Angle from Horiz. 50	Dep.	Bottom El.	Remarks	
Driller Mid-West	Length 426	Location	Level		

Footage		Interval	RECOVERY		Graphic Log	DESCRIPTION	Sample No.	From-To	Interval	ASSAY				
From	To		Fl.	%						Ni	Cu	Ag	Au	Zn
266	302	36	36			Fine-Grained greenstone: minor fracturing qtz. filling: Pyr. disseminated. 15-20% magnetite: No signs of cyp.	2554	266-273	7'	--	.02	.16	Tr	.01
							2555	276-282	6'	.005	.03	.28	Tr	.005
							2556	282-286	4'	Examined-not worth				
							2557	286-291	5'	sending for assay				
302	342	40			SAME Minor fracturing, filled with qtz. + cordierite: Highly magnetic: Becoming more gabbroic	2558	296-301	5'	--	.02	.16	Tr	.01	
						2559	306-311	5'	Examined-not worth					
						2560	316-321	5'	sending for assay					
						2561	326-331	5'	"	"	"	"		
						2562	331-336	5'	"	"	"	"		
						2563	336-341	5'	"	"	"	"		
342	400	58			Predominantly medium-coarse grained metagabbro, with intermittent zones of fine-grained greenstone: Minor fracturing local filling. Minor pyr. disseminated: Some bluish cordierite present: slightly magnetic: Possibly some blebs of sphalerite	2564	342-347	5'	"	"	"	"		
						2565	352-357	5'	"	"	"	"		
						2566	366-371	5'	"	"	"	"		
						2567	376-381	5'	"	"	"	"		
						2568	382-387	5'	"	"	"	"		
						2569	387-392	5'	"	"	"	"		
						2570	392-397	5'	--	.01	.30	Tr	.01	
						2571	397-400	3'	Examined-not worth					

sending for assay

Drill Hole Log

COMPANY Scurry-Rainbow Oil Limited PROPERTY Briar Court, Ontario Section No. _____ HOLE No. B.C. 3A

Started <u>April 15, 1970</u>	Bearing <u>N 40 E</u>	Lat. _____	Collar El. _____	Logged by <u>G. Finn</u>	Date <u>April 21-26</u>
Completed <u>April 24, 1970</u>	Angle from Horiz. <u>50°</u>	Dep. _____	Bottom El. _____	Remarks _____	
Driller <u>Midwest</u>	Length <u>3+00 S 4+00</u>	Location _____	Level _____		

Footage		Interval	RECOVERY		Graphic Log	DESCRIPTION	Sample No.	From-To	Interval Ni	ASSAY			
From	To		Ft.	%						Cu	Zn	Au	Ag
0	72	0.B.				Overburden - sand, gravel, granitic boulders - up to 7' in diameter							
72	126	54	54			Predominantly dark green amphibolite rock (greenstone) with intermittent alteration zones of epidote: Fine-grained. Highly fractured, filled with calcite: Shearing 40--60° Minor qtz. veins: Pyr.							
						disseminated. Also rich in cordierite: No signs of mineralization.							
176	193					As above. Coarse to fine grained. Increase in pyr. Shearing 50° - 70°. No signs of mineralization. Gradational change.	2582	169 -174	5 --	.02	.01	Tr	.20
							2583	173 -176	3 --	.01	.01	Tr	.30
							2584	176 -181	5 --	.005	.01	Tr	.14
							2585	181 -186	5 --	.01	.01	Tr	.26
							2586	186 -193	7 --	.01	.01	Tr	.24

Drill Hole Log

COMPANY Scurry-Rainbow Oil Limited PROPERTY Briar Court, Ontario Section No. HOYE No. B.C. 3A

Started April 15, 1970	Bearing N 40 E	Lat.	Collar EL.	Logged by G. Finn	Date April 21- 26
Completed April 24, 1970	Angle from Horiz. 50°	Dep.	Bottom EL.	Remarks	
Driller Midwest	Line St. Length 3+00 4+00	Location	Level		

Footage		Interval	RECOVERY		Graphic Log	DESCRIPTION	Sample No.	From-To	Interval	ASSAY			
From	To		Ft.	%						Cu	Zn	Au	Ag Ni
196	239	43	43			Predominantly medium to coarse grained meta-gabbro, with intermittent patches of greenstone: Moderately fractured, calcite filling: Pyr. disseminated with scattered blebs of Cpy.	2587	196 - 99	3	.03	.01	Tr	.20 --
							2588	203 - 6	3	.03	.01	Tr	.08 --
							2590	211 - 16	5	.03	.01	Tr	.18 --
239	251	12	12			Sharp contact: Diabase dyke: Minor fracturing: Calcite filling: Fine-grained pyr. disseminated							
251	277	26	26			Sharp contact, medium to coarse grained metagabbro: Minor fracturing: Pyr. & Pyrr. disseminated with scattered blebs of cpy.	2597	251 - 56	5	.13	.01	.005	.24 --
							2599	261 - 66	5	.33	.01	.005	.10 --
277	289	12	12			Sharp contact, diabase dyke							
289	307	18	18			Medium to coarse grained metagabbro: Minor fracturing: Calcite filling: Pyr. & Pyrr. disseminated: Blebs of cyp. scattered: Gradational Contact:							

Drill Hole Log

COMPANY Scurry-Rainbow Oil Limited

PROPERTY Briar Court, Ontario

Section No.

HOLE No. B.C. 3A

Started April 15, 1970	Bearing N 40 E	Lat.	Collar El.	Logged by G, Finn	Date April 21 - 26
Completed April 24, 1970	Angle from Horiz. 50°	Dep.	Bottom El.	Remarks	
Driller Midwest	Length 3+00 - 4+00	Location	Level		

Footage		Interval	RECOVERY		Graphic Log	DESCRIPTION	Sample No.	From - To	Interval	ASSAY				
From	To		Ft.	%						Au	Ag	Cu	Zn	Ni
307	328	21	21			Fine-grained, dark green greenstone: Highly fractured, calcite filling: Minor pyr. disseminated: No signs of mineralization: Gradational change:								
328	340	12	12			Coarse-grained meta-gabbro: minor fracturing calcite filling: Shearing 40 - 60' minor pyr. disseminated: No signs of mineralization								
340	375	35	35			Greenstone, fine grained, very tight fracturing; small folds, calcite filling with minor quartz veins: Schistosity 30° - 50°. Pyr. disseminated with scattered blebs of cyp.	2716	343 - 48	5	Tr	.08	.24	.005	
							2717	348 - 50	2	Tr	.32	.40	.01	
							2718	350 - 55	5	Tr	.32	.23	.01	
							2719	362 - 65	3	Tr	.16	.24	.01	
375	425	50	50			Predominantly medium-grained metagabbro with intermittent patches of greenstone: minor fracturing, calcite filling, minor pyrite disseminated, high to low magnetic.								
425	456	31	31			Dark to light greenstone, fine-medium grained: Moderately fractured, calcite filling: minor pyr. disseminated, moderately magnetic: No signs of mineralization								

Drill Hole Log

COMPANY Scurry-Rainbow Oil Limited PROPERTY Brair Court, Ontario Section No. HOLE No. B.C. 3A

Started April 15, 1970	Bearing N 40 E	Lat.	Collar EL.	Logged by G. Finn	Date April 21 - 26
Completed April 24, 1970	Angle from Horiz. 50°	Dep.	Bottom EL	Remarks	
Driller Midwest	Length 3 + 00. 4+00	Location	Level		

Footage		Interval	RECOVERY		Graphic Log	DESCRIPTION	Sample No.	From-To	Interval	ASSAY			
From	To		Ft.	%						Ni	Cu	Zn	Au
456	486	30	30			Medium to coarse metagabbro with intermittent patches of greenstone: Minor fracturing, calcite filling with minor quartz veins.	2720	469 - 70	1 -	.04	--	Tr	.18
486	496	10	10			Grey volcanic rock with intermittent zones of quartz: Fine-grained, minor fracturing: Pyrite disseminated with large scattered blebs of pyrr.	2721	486 - 91	5 Tr.	.02	.005	Tr.	.28
							2722	491 - 96	5 Tr.	.01	Tr.	.010	5.98
496	505	9	9			Metagabbro, seems to have been recrystallized: Minor fracturing, with calcite filling; pyr. disseminated, sharp contact							
505	519	14	14			Greenstone: Fine-grained minor fracturing-calcite filling: Shearing 11 to core axis: Minor pyr. disseminated: Pyrr. along fractures: (516 - 18) cherty texture) schistosity 40° - 50° to the core axis.							
519	520	1	1			Chloritized metagabbro: Shear zone: Fine grained, crumpled.							

Drill Hole Log

COMPANY Scurry-Rainbow Oil Limited

PROPERTY Briar Court

Section No.

HOLE No. BC-4

Started April 25	Bearing N 40 E	Lat. 1400 W	Collar El.	Logged by R. D. [Signature]	Date April 29, 1970
Completed April 30	Angle from Horiz. 50NW	Dep. 12400S	Bottom El.	Remarks	
Driller Midwest	Length 596	Location 12400 S	Level		

Footage		Interval	RECOVERY		Graphite Log	DESCRIPTION	Sample No.	From-To	Interval	ASSAY			
From	To		Ft.	%						Au	Ag	Cu	Zn Ni
0	11	11	1'			Overburden							
11	79	10'				Medium Grains green tone (mafic) Hnbl'd 60% No mineralization							
79	87	8'	8'			Biotite Schist. Very Fine. Well banded Some calcite veins shearing parallel to bedding approximately 60° with core axis Disseminated chalcopyrite through section.	2724	79-80	1'	Tr	.16	.25	.02
							2725	80-85	5'	Tr	.26	.03	.01
						Heavier concentration at 79'. Few Gabbroic layers							
87	92	5'	5'			Medium grains meta gabbro Not mineralized Massive--No shearing							

Drill Hole Log

COMPANY Scurry-Rainbow Oil Limited

PROPERTY Briar Court

Section No.

HOLE No. BC-4

Started April 25	Bearing N 40 E	Lat. 1400 W	Collar El.	Logged by R. D.	Date April 29, 1970
Completed April 30	Angle from Horiz. 50NW	Dep. 12400 S	Bottom El.	Remarks	
Driller Midwest	Length 596	Location 12400 S	Level		

Footage		Interval	RECOVERY		Graphic Log	DESCRIPTION	Sample No.	From-To	Interval	ASSAY				
From	To		Ft.	%						Au	Ag	Cu	Zn	Ni
92	101	9'	9'			Light Grey--Very fine grains--intermediate greenstone. Not mineralized. No cleavage								
101	154	10'	10'			Greenish grey--greenstone coarser grains --cleavage 30° with the core 129-130' Darker well banded almost perpendicular to core greenstone. Possibly mafic tuff chloritic--pyrite approximately - 1% on cleavage planes	2726	129-130	1'	Tr	.24	.03	.02	.0
154	162	8'	8'			Lighter int. greenstone coarser grains. Banded perp: to core calcite veins								
162	167	5'	5'			Greenish fine grains strongly sheared. Grstn pyrite on cleavage planes. Little chalcop.	2727	162-167	5'	Tr	.22	.10	.01	

Drill Hole Log

COMPANY Scurry-Rainbow Oil Limited

PROPERTY Briar Court

Section No.

HOLE No. BC-4

Started April 25	Bearing N 40 E	Lat. 1400 W	Collar El.	Logged by R. D.	Date April 29, 1970
Completed April 30	Angle from Horiz. 50NW	Dep. 12400 S	Bottom El.	Remarks	
Driller Midwest	Length 596	Location 12400 S	Level		

Footage		Interval	RECOVERY		Graphic Log	DESCRIPTION	Sample No.	From-To	Interval	ASSAY				
From	To		Ft.	%						Au	Ag	Cu	Zn	Ni
167	221	10	10			Coarse grains metagabbro pyroxene - 40% - no mineralized.	2728	167-172	5'	Tr	.20	.01	.01	--
						205-207 - very fine grey-granular-banded metaquartzite? Disseminated pyrite very little	2729	172-177	5'	Tr	.14	.01	.01	--
							2730	205-207	2'	Tr	.08	.01	.005	--
221	233	10	10			Same metaquartzite, as described before At both end and 229' a few inches of chlor- itic schist. Schistosity. 45° with core The quartzite is very massive	2731	221-226	5'	Tr	Tr	.01	.005	--
							2732	226-231	5'	Tr	Tr	.01	.01	--
233	271	10'	10'			Light grey-coarse grains int. greenstone pyroxene 20% Massive shearing - 60° & 45°								
271	286	10	10			Greenstone coarse grains more mafic. Chloritic Cleavages. 30° with core not mineralized								
286	292	6'	6'			Chlorite schist Fine Greenish - highly sheared - calcite approximately 40%. Mostly in veins (irregular shape) Cleavage 85° with core axis.								

Drill Hole Log

COMPANY Scurry-Rainbow Oil Limited

PROPERTY Briar Court

Section No.

HOLE No. BC-4

Started April 25	Bearing N 40 E	Lat. 1400 W	Collar EL.	Logged by R. D.	Date April 29, 1970
Completed April 30	Angle from Horiz. 50NW	Dep. 12+00 S	Bottom EL	Remarks	
Driller Midwest	Length 596	Location 12+00 S	Level		

Footage		Interval	RECOVERY		Graphic Log	DESCRIPTION	Sample No.	From-To	Interval	ASSAY				
From	To		Fl.	%						Au	Ag	Cu	Zn	Ni
286 (Con't)	292	6'	6'			3 quartz veins No mineralization								
292	367	10	10			Grey--fine to med. grains mafic volcanic Pyroxene + Hnbl. 60% Not mineralized 322--1' of metaquartzite No mineralization								
367	372	5'	.5'			Light grey very fine grains int. volcanic magnetic. No sulphides								
372	407	10'	10'			Greenish grey med. --fine grains mafic massive Not mineralized 395-399 identical but coarse								
407	491	10	10			Greenish grey med. --coarse mafic Pyrrhotite + chalco at 461	2733.460,5	-						
							461	.5'	Tr	.14	.03	.01	--	

Drill Hole Log

COMPANY Scurry-Rainbow Oil Limited PROPERTY Briar Court Section No. HOLE No. BC-4

Started April 25	Bearing N 40 E	Lat. 14	Collar El.	Logged by R. D.	Date April 29, 1970
Completed April 30	Angle from Horiz. 50NW	Dep. 12+00 S	Bottom El.	Remarks	
Driller Midwest	Length 596	Location 12+00 S	Level		

Footage		Interval	RECOVERY		Graphic Log	DESCRIPTION	Sample No.	From-To	Interval	ASSAY				
From	To		Ft.	%						Au	Ag	Cu	Zn	Ni
491	520	10	10			Same greenstone slightly more felsic Shearing 60° with core felsic and quartz bands occasionally -- no sulphides	2734	515-520	5'	Tr	.20	.01	.01	--
520	546	10	10			Grey--Finer mafic shearing. 60° with core well sheared at 528--530 with disseminated chalcopyrite	2735	528-530	2'	Tr	Tr	.01	.01	--
546	596	10	10			Fine to medium metagabbro with slightly more felsic bands. Very light color No mineralization								
	596					End of the Hole								

Drill Hole Log

COMPANY Scurry-Rainbow Oil Limited PROPERTY Briar Court Section No. _____ HOLE No. BC-11-C

Started	June 9, 1970	Bearing N - 40° W	Lat. 2 + 50 N	Collar El.	Logged by <u>R.D.</u>	Date June 14, 197
Completed	June 12, 1970	Angle from Horiz. -60°	Dep. 1 + 00 E	Bottom El.	Remarks Not mineralized	
Driller	Midwest	Length 366'	Location Block D	Level		

Footage		Interval	RECOVERY		Graphic Log.	DESCRIPTION	Sample No.	From-To	Interval	ASSAY		
From	To		Ft.	%								
0	51.0					Overburden, sand and large boulders						
51.0	92.0					Dark grey - coarse mafic volcanic foliation - perpendicular to core. Slight pyrite in quartz veins						
92.0	101.0					Lighter bluish grey - finer banded disseminated pyrite along veins - 1% banding 70° with core						
101.0	145.0					Identical to 51-92, coarser numerous calcite veins. (No pyrite)						
145.0	168.5					Very light grey, coarse massive felsic volcanics. Finer textured from		158-160.5				

Drill Hole Log

COMPANY Scurry-Rainbow Oil Limited PROPERTY Briar Court Section No. _____ HOLE No. BC-11-C

Started	June 9, 1970	Bearing N - 40° - W	Lat. 2 + 50 N	Collar EL.	Logged by	R-D	Date	June 14, 1970
Completed	June 12, 1970	Angle from Horiz. -60°	Dep. 1 + 00 E	Bottom EL.	Remarks	Not mineralized		
Driller	Midwest	Length 366'	Location	Block D	Level			

Footage		Interval	RECOVERY		Graphic Log	DESCRIPTION	Sample No.	From-To	Interval	ASSAY				
From	To		Ft.	%						Au	Ag	Cu	Zn	Ni
168.5	180.5					Greenish grey coarse grained, massive mafic volcanics. Numerous calcite veins	2447	180.5-185.5	5					
					MINERAL ZONE		2448	193 -196.5	3.5					
180.5	234.0					180.5-185.5 - pyrite-chalcopyrite-pyrrhotite								
						193 -196.5 - pyrite-chalcopyrite-pyrrhotite								
						209 - pyrrhotite in quartz veins								
						219 - chalcopyrite - one speck, no sample								
						233.5-234 - Sheared, more rhyolite, fine pyrrhotite chalcopyrite	2449	233.5-234	.5					
266.5	333.0					Light grey, more felsic massive material, aphanatic matrix with feldspar porphyryes. No mineralization								
333.0	341.0					Coarse grained mafic. volcanics. Massive disseminated specks of pyrite								
341.0	344.0					Fine light massive mafic. volcanics with calcite veining								



52G14SE0039 52G14SE0016 VALORA LAKE

020

FINAL REPORT
BRIAR COURT MINES COPPER PROSPECT
EXPLORATION PROGRAM
WATCOMB CLARKDON DISTRICT
STURGEON LAKE AREA, ONTARIO

N.T.S. Ref. 52 G/11

BY
J. DUANE POLIQUIN, P. ENG.
SENIOR GEOLOGIST - METALLICS
MINING DIVISION
SCURRY-RAINBOW OIL LIMITED

JULY 2, 1970

TABLE OF CONTENTS

	<u>Page</u>
Summary	1
Introduction	2
Location and Access	2
Geology	3
Exploration Program	
(1) Initial Reconnaissance	3
(2) Linecutting	3 - 4
(3) Geophysical Surveys	4
(4) Diamond Drilling	4, 5, 6
(5) Geological Investigations	7 - 8
Conclusions	9
Recommendations	9
Exploration Cost Summary	10
Personnel Summary	11
Appendix: Diamond Drill Logs #1 - #11c	
Map List: (1) Location Map	
(2) Drill Plan Detail Grid Area	
(3) Drill Plan Contact Area	

S2G14SE0039 S2G14SE0016 VALORA LAKE



0200C

SUMMARY

The Briarcourt Mines Ltd. copper prospect near Sturgeon Lake, Ontario was examined in October, 1969 by W. C. Cheesman, Chief Geologist, and subsequently optioned. Work began with linecutting and geophysical surveys over the entire property, followed by diamond drilling. All work was completed June 14, 1969 with a total cost of \$105,470.39. Eleven B.Q.W. holes totalling 5,036 feet were drilled on E.M. anomalies in two areas, along a mineralized shear zone and along a favourable rhyolite-greenstone contact. Hole B.C.1 intersected an interesting but subeconomic zone which was investigated to depth and along strike and cut off in all directions. Hole B.C.6 intersected ore grade mineralization across 0.2 feet. Holes along strike and to depth had no significant intersections. Several mineralized areas were investigated by geological means and did not warrant diamond drilling. It is concluded that the property was a good prospect but investigations have thoroughly eliminated all ore zone possibilities and no further work is recommended.

INTRODUCTION

This report presents the results of a comprehensive exploration program conducted on the group of claims optioned from Briarcourt Mines Ltd. in the Sturgeon Lake area of the Patricia Mining Division, District of Kenora, Ontario. The program consisted of geophysical surveys, geological reconnaissance and over 5,000 feet of diamond drilling. This work is completed and all staff, contractors, and equipment are now off the property.

LOCATION AND ACCESS

The claims herein described are located just west of the Savant Lake road approximately two miles southwest of Sturgeon Lake and 40 miles north of Ignace, Ontario.

The claims are easily accessible by 4-wheel drive vehicle by utilizing an abandoned railway spur that traverses the entire group from northeast to southwest and intersects the Savant Lake road near the southwest end of Sturgeon Lake about 1 mile from the northern end of the Briarcourt group.

The Canadian National Railway from Fort William to Sioux Lookout and Winnipeg is situated about 3 miles west of the claim group. During the course of drilling, the abandoned railway spur line was made into a good access road and approximately 10 miles of drill road, suitable for bulldozer and swamp buggy, were cut. These drill roads provide access to every part of the property. A location map showing all roads is included in this report.

GEOLOGY

The area is a few miles distant along strike from the recently discovered Matagami-Abitibi copper-zinc ore body. Underlying rock types include granodiorite to the northwest, metavolcanics (greenstone), metarhyolite along the extreme north boundary of the property, and gabbroic dikes. A regional shear zone cuts through the property at N 50° E.

Sulphide minerals including chalcopyrite, pyrite and pyrrhotite occur along the shear zone. One strong E.M. anomaly was found along this shear zone and subsequently drilled. Chalcopyrite and molybdenite were found along the rhyolite-greenstone contact on the northern part of the property, associated with weak E.M. anomalies. Weak chalcopyrite-molybdenite mineralization is disseminated through the granodiorite on the northwest part of the property and all these zones are discussed under EXPLORATION PROGRAM.

EXPLORATION PROGRAM

(1) Initial Reconnaissance

The property was initially examined in late October, 1969 by W. C. Cheesman, who recommended acquisition of the property, line-cutting followed by a combined electromagnetic and magnetic geophysical survey, and diamond drilling of significant anomalies.

(2) Linecutting

A contractor was employed to cut 85.5 line miles of grid at 200 foot intervals. Scurry-Rainbow personnel did some additional

linecutting on a detailed portion on block "D" and "H" of the master grid plan.

(3) Geophysical Survey

(a) Electromagnetic Survey

Crone J.E.M. equipment was used to survey the property. V.E.M. equipment was used to detail J.E.M. zones. Readings were taken every 100 feet along the pre-cut lines. Anomalous areas were detailed with readings every 50 feet.

(b) Magnetometer Survey

The magnetic survey was carried out with a M-700 McPhar instrument which measures the vertical magnetic field with a flux gate system. The E.M. lines and stations were used and magnetic contour maps were prepared.

As a result of these surveys, one fairly strong E.M. anomaly, and several weak anomalies were outlined and surveys on a detail grid confirmed and defined the results on the strong conductor on claim 4/105, some anomalies with fair magnetic correlation were defined. Diamond Drilling was recommended by D. R. Doal, Company Geophysical Supervisor, in his evaluation of geophysical results.

(4) Diamond Drilling

Midwest Diamond Drilling of Winnipeg were contracted to do 5,000 feet of BQWL diamond core drilling. They moved on the property March 27, and moved off the property Sunday, June 21, with a total of 5,036 feet of drilling completed in 11 holes. Difficult overburden consisting of sand and boulders caused holes BC-3, BC-11a and

BC-11b to be lost. Drill location plans, drill logs and sections are appended to this report. The results of drilling are tabulated below. The work was supervised on the property by D. R. Rota, geologist, with G. Finn, geologist, assisting for a period of 1½ months. The writer supervised the field work from Calgary by means of periodic visits and daily telephone contact. Dip tests were taken and no significant deviation of holes is indicated. The core was stored outside at Young Lake Lodge. A summary of the drilling program follows.

Hole	Co-ord.	Direction	Angle	Depth	Purpose	Intersections	Assays	Comments
BC-1	0 + 00 2 + 00E Detail Grid	N 40° W (true N)	-50°	497'	To intersect the best section of the best anomaly on the property	68-181 - diss. py. and pyrr. to 10% 181-210 - 10% - 30% pyrr. 1.5% cpy. 210-440 - widely scat. bands of less than 1% diss. pyr.	Int Au Ag Cu Zn Not significant Tr. .41 .43	191.0-196.0 - 1% Ni
BC-2	6 + 00S 3 + 00E Detail Grid	N 40° W (true N)	-50°	426'	To intersect the same anomaly as BC-1, 600' along strike	This hole contained widely scattered grains of py. and under .25% cpy. but there was no definite mineral zone and no significant assays		
BC-3a	3 + 00S 4 + 00E Detail Grid	N 40° W (true N)	-50°	703'	To intersect the zone found in BC-1, 300' along strike and 150' down dip, in case there was a steep plunge to the zone	This hole contained widely scattered traces of sulphides but there was no definite mineral zone and no significant assays		BC-3 lost in overburden
BC-4	12 + 00S 1 + 00N Detail Grid	N 40° W (true N)	-50°	596'	To intersect the possible intersections of vertical and horizontal loop conductors which were not co-incident	This hole contained scattered traces of py., pyrr., and cpy. but no significant assays were obtained		
BC-5	128 + 00N 122 + 00E	N	-50°	386'	To intersect a weak anomaly on the basic volcanic-rhyolite contact	This hole intersected scattered short sections of diss. py. pyrr. - no significant assays were obtained		
BC-6	127 + 50N	N	-50°	426'	To intersect a weak anomaly on the basic volcanic-rhyolite contact	This hole intersected short sections of pyrite, pyrr., and cpy. along fractures in a shear zone on the contact - a very similar situation to the Matagami ore zone 266.7-266.9 - 3% cpy. very slight py 286.3-288.3 - 1.5% cpy. 363.7-368.5	Int Au Ag Cu Zn 0.2 .01 1.82 1.60 2.0 Tr. 0.58 0.59 4.1 Tr. 0.29 0.41	Drilled slightly down dip as formation dipped -75° N. Other sulphide intersections had no significant assays
BC-7	131 + 35N	S	-65°	517'	To intersect the mineralization cut in BC-6 from proper direction at about 150' below BC-6	This hole intersected in short sections of pyrite, pyrr., and cpy. but nothing stronger than BC-6 201.8-202.3 - 2% cpy. .25% sph.	Int Au Ag Cu Zn 0.5 Tr. .54 .87 .11	Other sulphides intersections had no significant assays
BC-8	131 + 50N 112 + 00E	S	-50°	266'	To intersect a weak anomaly on the rhyolite basic volcanic contact which coincided with old trenches containing py. and cpy.	This hole intersected short sections with less than .8% cpy. and 5% pyrr. No significant copper or nickel assays were obtained		
BC-9	121 + 75N 116 + 00E	S	-50°	326'	To intersect a coincident V. E. M. and Mag. anomaly close to granite-volcanic contact	This hole intersected widely scattered short sections containing pyrite on fractures and on disseminations. Traces of cpy. were observed from 91-92.3, 142.2-143. There were no significant assays		
BC-10	131 + 50N 134 + 00E	S	-50°	527'	To intersect a weak anomaly on the mafic volcanic contact	This hole intersected widely scattered short sections containing 1% - 5% py., pyrr., and traces of cpy.		*Assays not returned yet but will not be significant
BC-11C	2 + 50N 1 + 00E Detail Grid	N 40° W (true N)	-60°	366'	To intersect the anomaly and mineral zone cut in BC-1, 250' east on strike	This hole intersected scattered short sections of py., pyrr., and cpy., with a definite Mineral Zone bearing py., pyrr., and trace cpy.		*BC-11A and B were at 2 + 00N, 1 + 00E @ -50° but were lost in overburden. Assays not returned yet, but will not be significant

*July 7, 1970 - Assays from BC 10 & 11 are back and are not significant

(5) Geological Investigations

(a) Claim 47103

This area was prospected by D. Rota, geologist, to investigate copper mineralization associated with shearing as shown on government maps. Exposures are limited, but where outcrop exists on the shear zone, mineralization consisted of less than 1% pyrrhotite and trace chalcopyrite. There was no coincident geophysical anomalies and the area was not considered worthy of exploration by diamond drilling.

(b) Claims 45970 - 45974

These claims are underlain by granite and were explored previously by Steep Rock Iron Mines by means of geologic mapping, magnetometer surveys, trenching and sampling. Sampling of over 80 trenches did not give any significant assays in copper or molybdenum. The overall average from these trenches is 0.03% copper and 0.019 MoS₂. The best assays come from an area 140 feet by 90 feet. These averaged 0.10% copper and 0.022% MoS₂. However, the whole area was examined by D. Rota and myself and no definite zone or association with shearing exists. There is no potential for a significant lode type mineral zone and the area is not worthy of investigation by drilling.

(c) Claim 221018

On the claim there is a narrow shear zone through unaltered gabbro, from 1.0 to 2.5 feet wide dipping south carrying near massive chalcopyrite for a strike length of 25 feet. After an

interval of 15 feet to the east the shear zone reopens with some small blebs of massive chalcopyrite in it. A packsack drill hole was drilled under the best section and did not intersect mineralization. Under these ideal conditions the Crone J.E.M. would have picked up any conducting mineralization but there is no anomaly over this zone. Bulldozer trenching did not pick up any extensions and on the steep western side of the outcrop the zone can be seen to pinch out in about 10 feet of depth. It was concluded the zone is surficial and not significant, therefore no drill hole was spotted to test this zone.

(d) Claim 46100

On this claim in the extreme northwest corner of the property a single line E.M. anomaly occurs on line 106 E, 35+50 N. This was exposed by bulldozer trenching and found to consist of pyrrhotite mineralization accompanied by traces of chalcopyrite. Drilling was not warranted.

COST SUMMARY BRIARCOURT OPTION

Geophysical Surveys and Line Cutting	\$ 26,291.62
Road Building	3,408.20
Geological Supervision and Mapping	19,165.83
Diamond Drilling	54,626.59
Assaying Costs	<u>1,978.15</u>
TOTAL	<u>\$105,470.39</u>

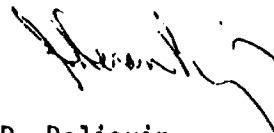
CONCLUSIONS

This property was an interesting and worthy prospect but all potential ore zone have been fully investigated utilizing geological and geophysical techniques as well as diamond drilling, costing \$105,470.39. A mineralized E.M. conductor associated with a shear zone and weak E.M. conductors along a favourable sheared and mineralized greenstone rhyolite contact were the main situations investigated. Although copper mineralization was found, it was never of ore grade or width and all potential trends of these zones along strike and to depth were investigated. There is no further potential on this property.

RECOMMENDATIONS

No further work is recommended on the Briarcourt property.

Respectfully submitted:



J. D. Poliquin
Senior Geologist, Metallics

PERSONNEL SUMMARY

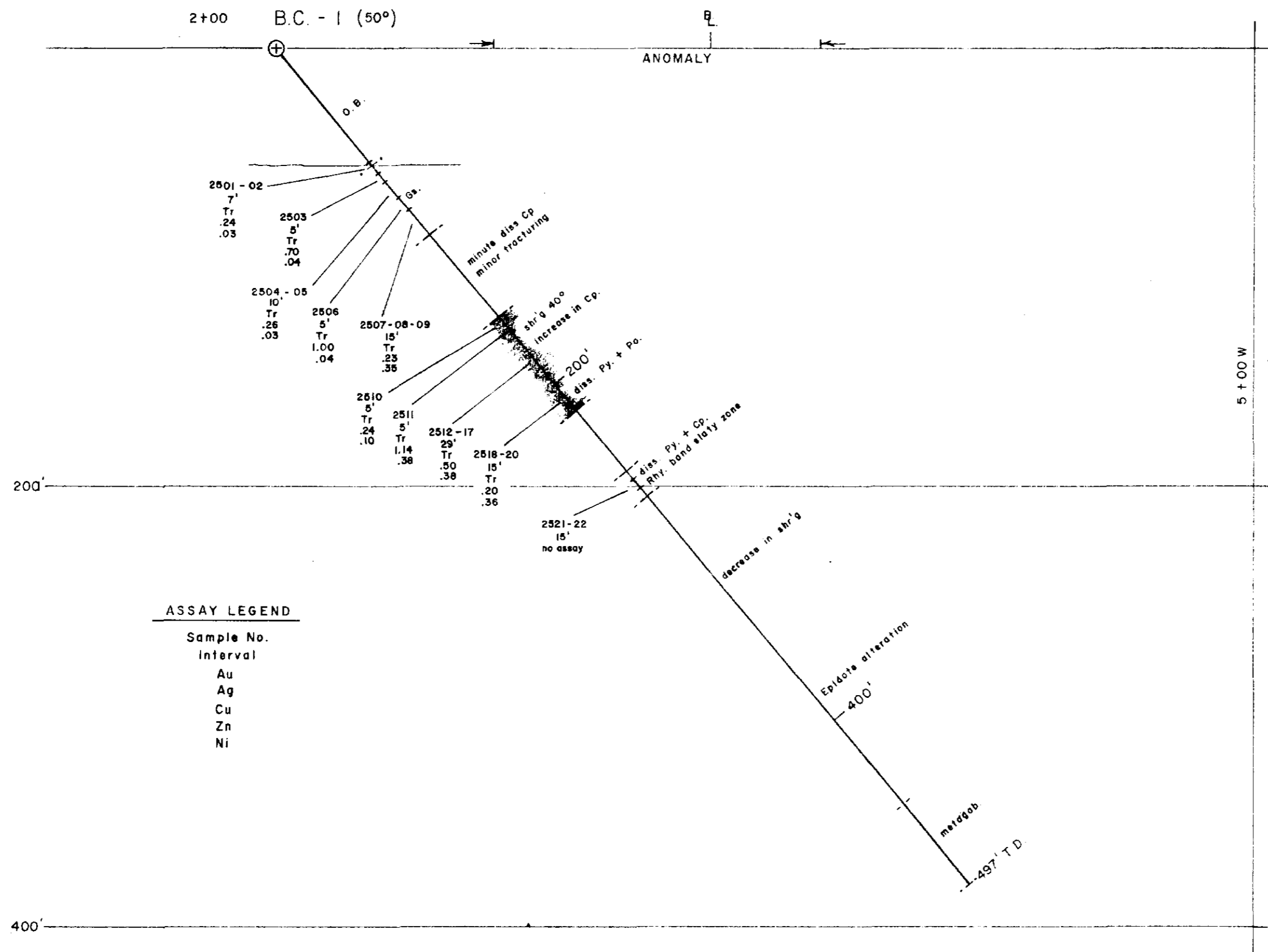
<u>Job</u>	<u>Personnel</u>	<u>Period</u>	<u>Days</u>
Linecutting	Contracted G. Potter, Kirkland Lake Ontario Company - Douglas Moore, Calgary, Alta. G. Patterson, LaRonge, Sask.	Nov. 9-29/69	20
		Nov. 9-29/69	20
		Jan. 12-19/70	7
Geophysics	J. K. Lytle - 539 - 8th Avenue, SW Calgary, Alberta	Nov. 9 - Dec. 15/69	37
		Jan. 8-19/70	12
		May 14-18/70	4
	I. Loranger - 539 - 8th Avenue, SW Calgary, Alberta	Nov. 9-Dec. 15/69	37
		Jan. 8-19/70	12
	G. Patterson, LaRonge, Saskatchewan	Dec. 1-15/69	15
	D. Doal - 153 Holland Street, H.W. Calgary, Alberta	Nov. 11-Jan. 19/70	20
G. Mitchell	May 14-18/70	4	
Geology & Drill Super- vision	D. Rota	March 27-June 14/70	80
	G. Finn	March 27-May 3/70	38
Overall Supervision of Property	W. C. Cheesman	Oct. 29-30/69	2
		April 1-5/70	4
		April 1-5/70	4
		April 21-25/70	4
		May 13-19/70	6

FOR ADDITIONAL

INFORMATION

SEE MAPS:

52 G/14 SE - 0016 #1-8



ASSAY LEGEND

Sample No.	Interval
Au	
Ag	
Cu	
Zn	
Ni	



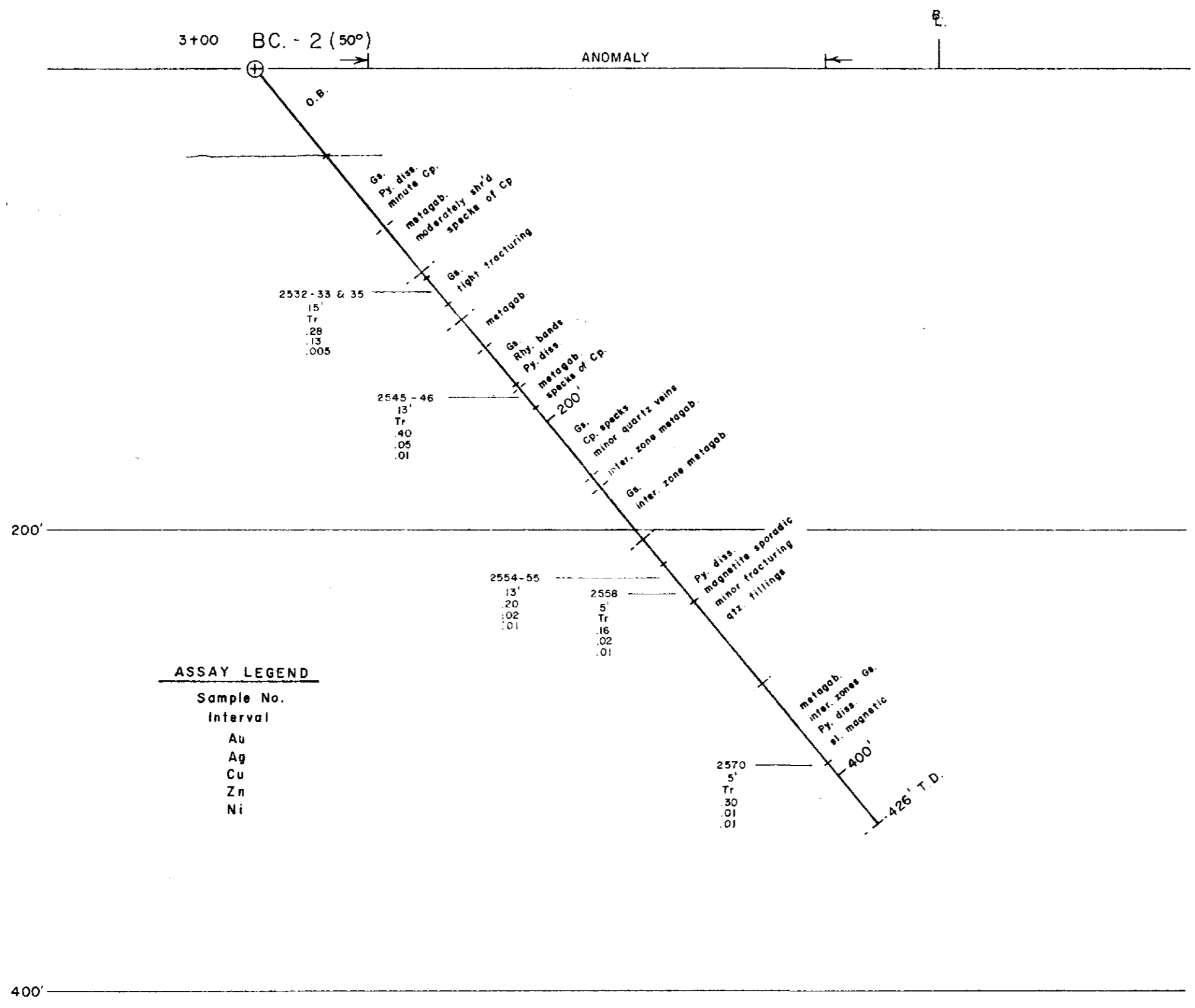
52G/14SE-0016 #1



52G14SE0039 52G14SE0016 VALORA LAKE

200

DRAWN G. FINN	SCALE 1" = 50'	SCURRY-RAINBOW OIL LTD.	SECTION 0+00, BC - 1
TRACED	DATE MAY 12/70		BRIAR COURT OPTION
APPROVED		ONTARIO	FILE NO. BC. 2-4-1



ASSAY LEGEND

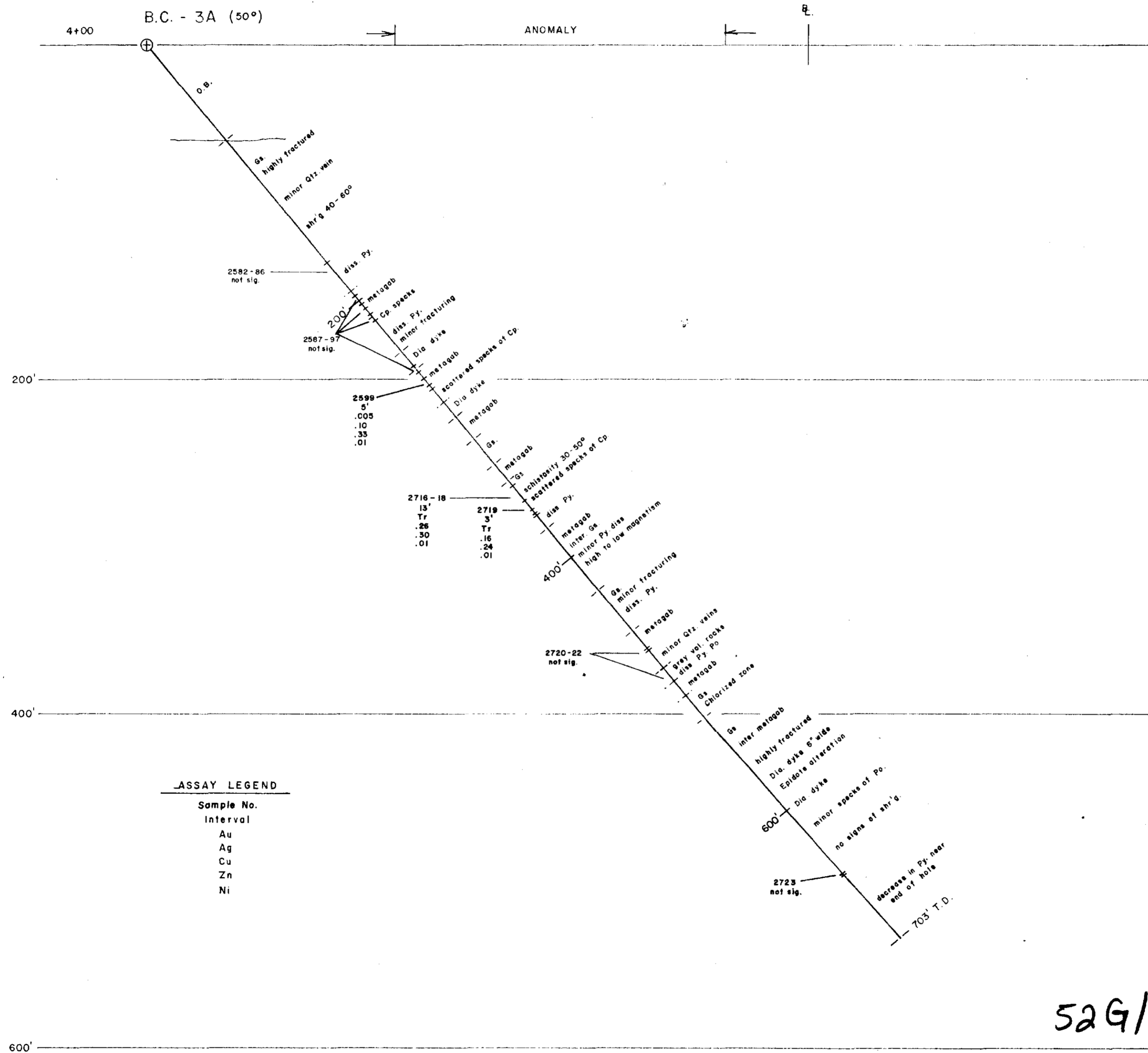
Sample No.	Interval	Au	Ag	Cu	Zn	Ni
2532-33 & 35		.15		.28	.13	.005
2545-46		.13		.40	.05	
2554-55		.13		.20	.02	.01
2558		.05		.16	.02	.01
2570		.05		.30	.01	.01



52G/14SE-0016 #2



DRAWN G. FINN	SCALE 1" = 50'	SCURRY-RAINBOW OIL LTD.	SECTION 6 + 00, BC. - 2
TRACED	DATE MAY 12/70		BRIAR COURT OPTION
APPROVED		ONTARIO	Looking WEST
			FILE NO. BC. 2-4-2



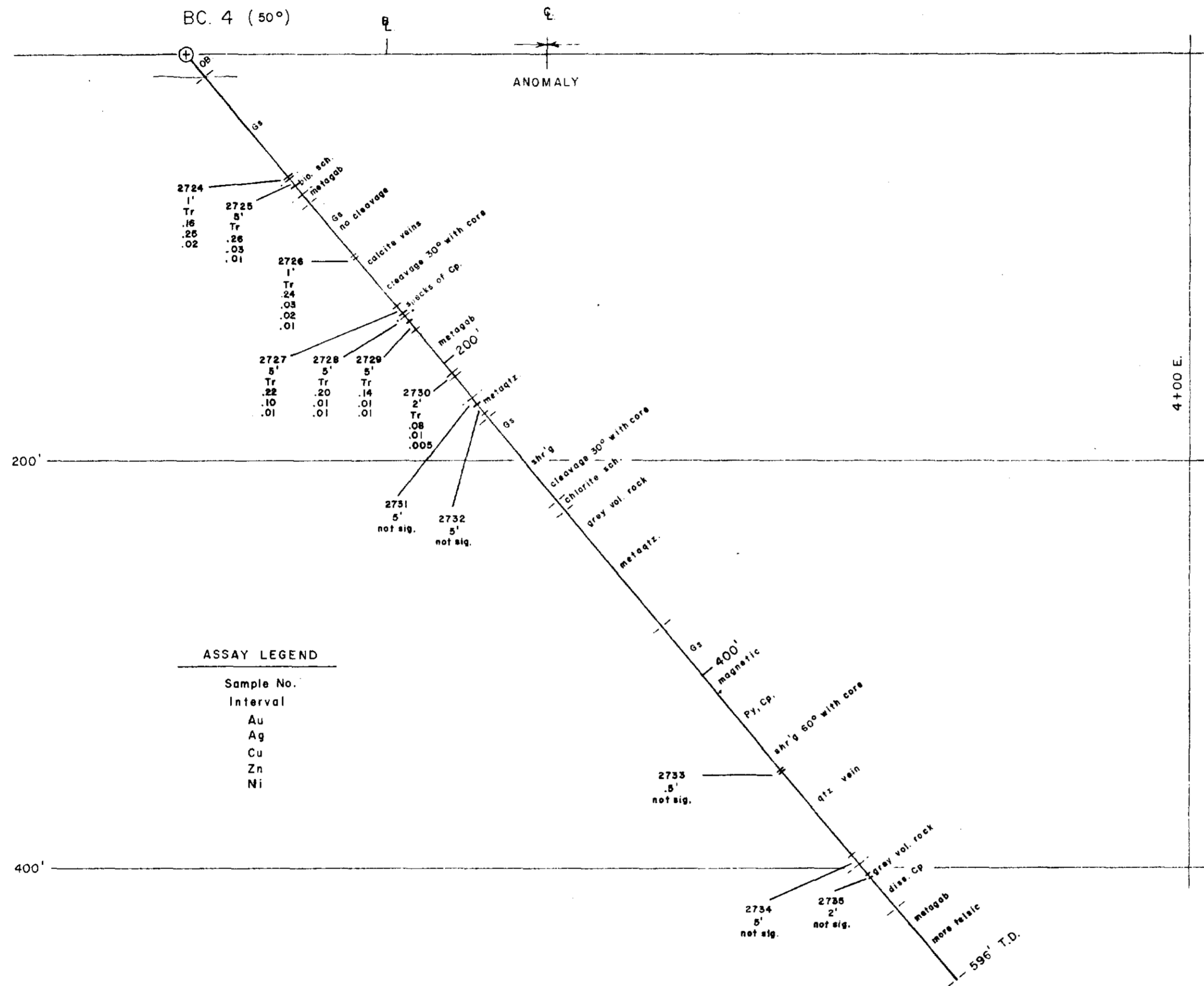
ASSAY LEGEND

Sample No.
Interval
Au
Ag
Cu
Zn
Ni

52G/14SE-0016 # 3



DRAWN G. FINN	SCALE 1" = 50'	SCURRY-RAINBOW OIL LTD.	SECTION 3+00S, BC. 3A Looking - WEST
TRACED	DATE MAY 13 / 70		
APPROVED		ONTARIO	FILE NO. BC. 2-4-3



ASSAY LEGEND

Sample No.	Interval
Au	
Ag	
Cu	
Zn	
Ni	

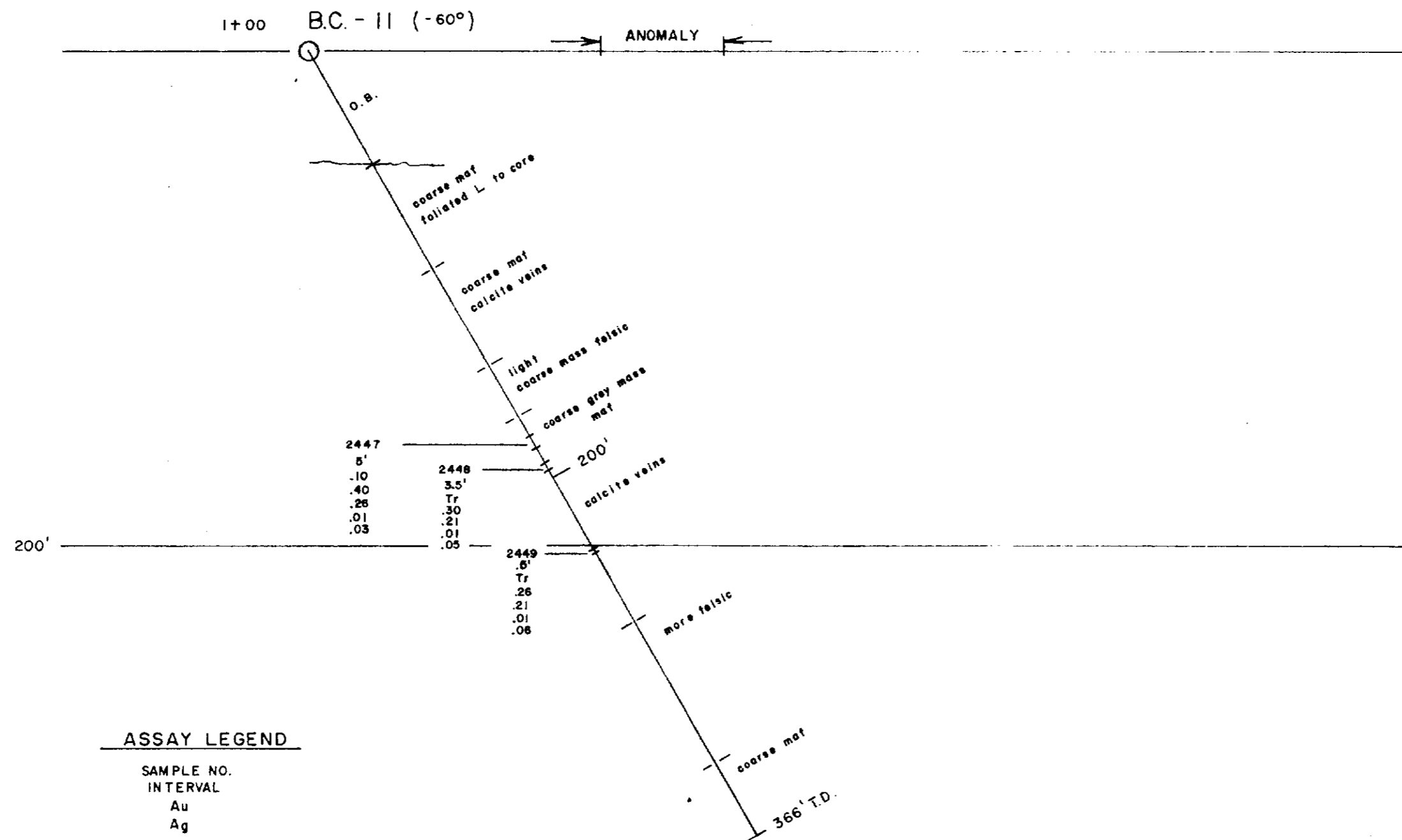


52G/14SE-0016 #4



230

DRAWN G. FINN	SCALE 1" - 50'	SCURRY-RAINBOW OIL LTD.	SECTION 12+00, B.C. - 4
TRACED	DATE MAY 13/70	BRIAR COURT OPTION	Looking-WEST
APPROVED		ONTARIO	FILE NO. BC. 2-4-4



ASSAY LEGEND

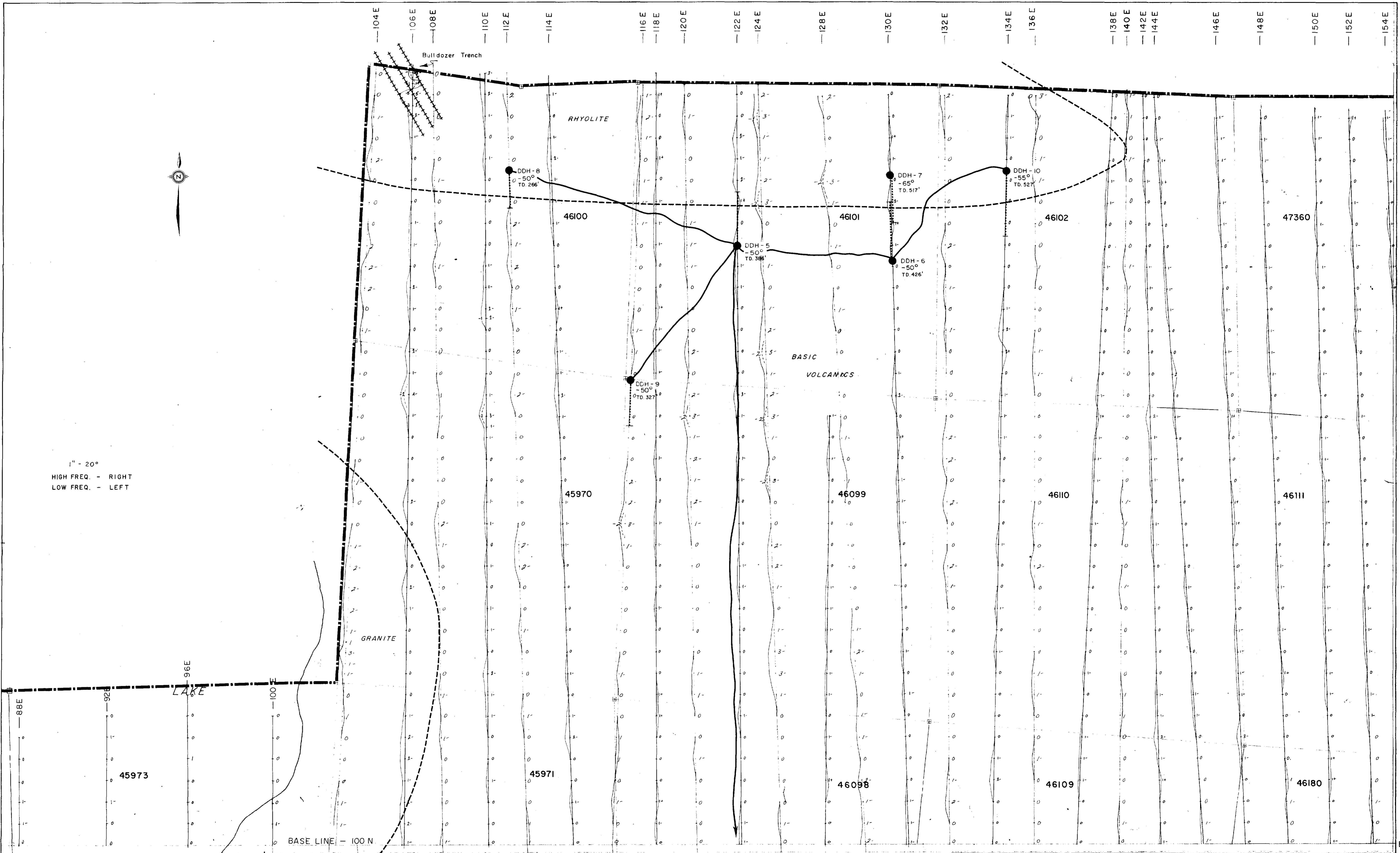
SAMPLE NO.
INTERVAL
Au
Ag
Cu
Zn
Ni

52G/14SE-0016 #5



DRAWN D.R.	SCALE 1" = 50'	SCURRY-RAINBOW OIL LTD.	SECTION 2+50 N, B.C. - 11
TRACED	DATE June / 70	BRIAR - COURT OPTION	Looking — WEST
APPROVED		ONTARIO	FILE NO. BC. 2 - 4 - 10





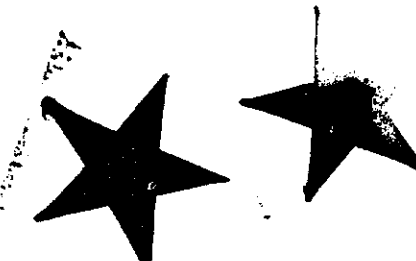
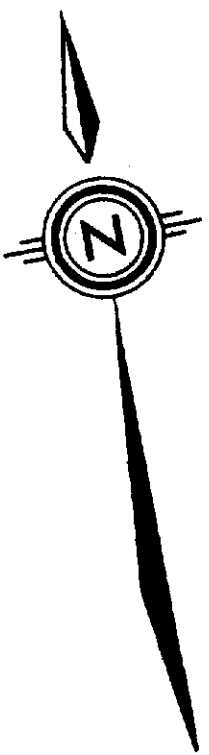
1" = 20'
 HIGH FREQ. - RIGHT
 LOW FREQ. - LEFT



250

52914SE-0016 #6

DRAWN J.D.	SCALE 1" = 200'	SCURRY-RAINBOW OIL LTD.	SHOWING D-D-H LOCATIONS AND TRENCH AREA
TRACED	DATE JAN. 1970		BRIARCOURT - OPTION
APPROVED	REVISED: JULY 70	STURGEON LAKE, ONT.	NORTH - L. 104 E. to 154 E.
		BLOCK C PLAN	FILE NO. STUR - 2-3-1



52G/14SE-0016 # 8



270

DRAWN R.M.	SCALE 1" = 100'	SCURRY-RAINBOW OIL LTD.	J.E.M. SURVEY
TRACED	DATE MAR. 1970	BRIARCOURT OPTION	PORTION BLOCK D
APPROVED		STURGEON LAKE, ONT.	FILE NO. STUR. 2-3-3