



010

DIAMOND DRILLING

AREA: SIXMILE LAKE

REPORT NO: 93

WORK PERFORMED FOR: Primrosi Gold Res. Inc.

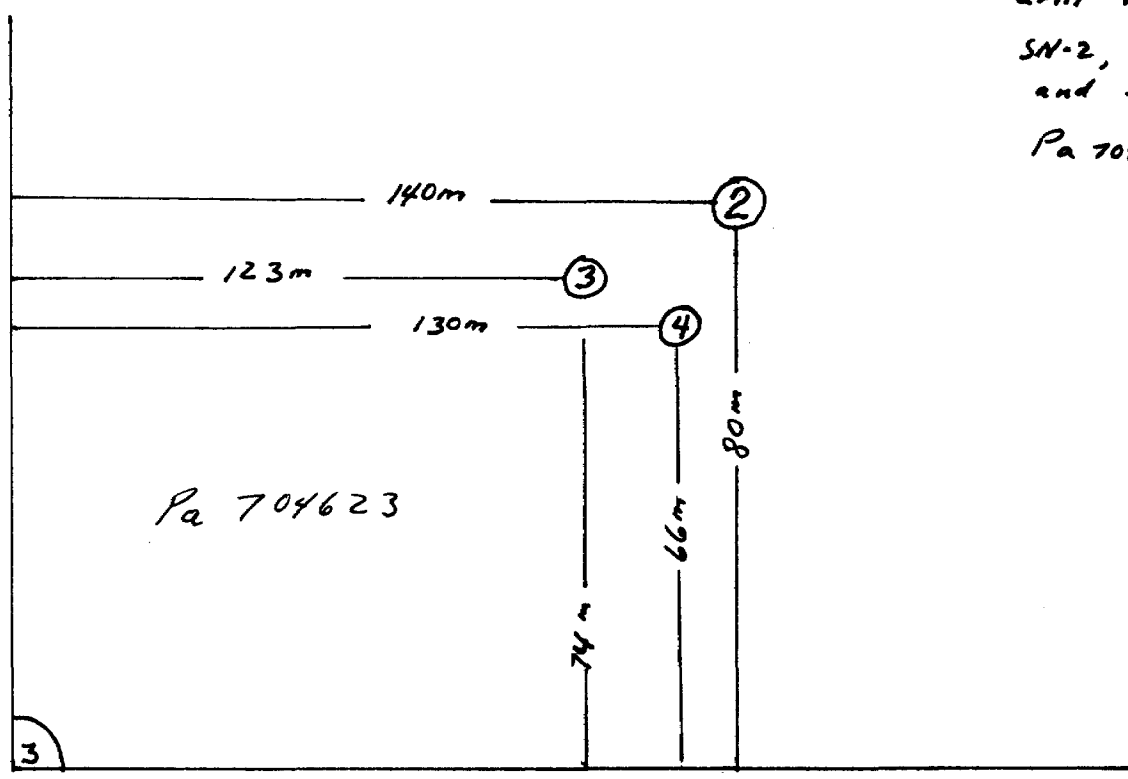
RECORDED HOLDER: Same as above [xx]
: Other []

<u>Claim No.</u>	<u>Hole No.</u>	<u>Footage</u>	<u>Date</u>	<u>Note</u>
Pa 704623	SN-2	12.24m	June/87	(1)
	SN-3	7.77m	June/87	(1)

2 DDA 20.01 m

NOTES: (1) #W8803.133, filed in Oct/88

Location of
drill holes
SN-2, SN-3
and SN-4
Pa 704623



Apr '88
JWR

TAIGA CONSULTANTS LTD.

DIAMOND DRILL LOG

CLIENT: Abermin Corporation
PROJECT: Sturgeon Narrows ONT-87-2

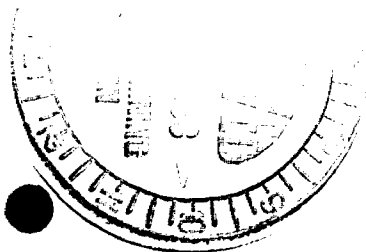
Area: Sturgeon Lake Latitude: Bearing: Date Started: Jun 7 87 Hole No.
 Core Size: AW Departure: Inclination @ collar -90 Date Completed: Jun 8 87 Sheet:
 Total Length: 12.24 m Elevation: 2.1 m Inclination @ _____ m Logged by: R.E.Chisholm/ Taiga Consult

FROM (m)	TO (m)	INTER (m)	LITHOLOGY	REC (%)	SAMPLE NUMBER	FROM (m)	TO (m)	I
-------------	-----------	--------------	-----------	------------	------------------	-------------	-----------	---

CORE RECOVERY: meterage:	0.00- 1.92	63						
	1.92- 3.35	92						
	3.35- 8.04	92						
	8.04- 9.92	130						
	9.92-12.24	96						

Total recovery for hole: 94%

0.00	12.24	12.24	SYENITE, greyish pink, fine- to medium-grained, massive; 20% disseminated ankerite blebs & phenocrysts to 3 mm; 1-3% cubes & blebs of pyrite, disseminated cubes up to 5 mm; quartz veining with ankerite selvages ranges from hairline to 4 mm thick, frequency 1/10 cm; pyrite preferentially distributed on veins.					
			0.00- 0.42 weathered, decomposed, limonitic zone			0.00	1.00	
			0.52- 0.60 weathered, decomposed, limonitic zone			1.00	2.00	
			0.72- 0.92 weathered, decomposed, limonitic zone			2.00	3.00	
			1.82- 2.20 weakly magnetic			3.00	4.00	
			2.23- 2.26 weathered, decomposed, limonitic zone			4.00	5.00	
			2.40- 2.60 weathered, decomposed, limonitic zone			5.00	6.00	
			8.50-12.24 moderate magnetic, pinkish grey in colour due to magnetite; no pyrite except in narrow non-magnetic sections; slightly (5%) biotitic.			6.00	7.00	
			veining at 30, 35, 58 degrees			7.00	8.00	
						8.00	9.00	
						9.00	10.00	
						10.00	11.00	
						11.00	12.00	
						12.00	12.24	



TAIGA CONSULTANTS LTD.

DIAMOND DRILL LOG

CLIENT: Abermin Corporation
PROJECT: Sturgeon Narrows ONT-87-2

Area: Sturgeon Lake Latitude: Bearing: Date Started: Jun 8 87 Hole No.
 Core Size: AW Departure: Inclination @ collar -90 Date Completed: Jun 9 87 Sheet:
 Total Length: 7.77 m Elevation: 3.25 m Inclination @ _____ m Logged by: R.E.Chisholm/ Taiga Consul

FROM (m)	TO (m)	INTER (m)	LITHOLOGY	REC (%)	SAMPLE NUMBER	FROM (m)	TO (m)
			CORE RECOVERY: meterage: 0.00-2.56 m	78			
			2.56-5.62 m	99			
			5.62-7.77 m	80			
			Total recovery for hole: 87%				
0.00	1.12	1.12	SYENITE, greyish-pink, medium-grained, massive, porphyritic in ankerite (phenocrysts to 5 mm) and biotite (chloritized); no pyrite; weakly magnetic; 20% disseminated ankerite. 0.75- 1.12 section strongly weathered, ankerite decomposed to limonite			0.00	0.75
						0.75	1.12
1.12	2.78	1.66	SEDIMENTS, bleached and feldspathized, fine-grained 1-2% finely disseminated pyrite			1.12	2.12
						2.12	2.83
2.78	7.77	4.99	SEDIMENTS, dark green, fine-grained, 5% 0.5 to 1.0 mm sized disseminated white mineral (probably ankerite); rare sections weakly magnetic; fractured, hairline quartz filling, quartz-ankerite. Core angles 25,50 degrees 5.21- 5.30 syenite dyke 5.95- 6.01 syenite dyke 6.95- 7.05 syenite dyke			2.83	3.83
						3.83	4.83
						4.83	5.83
						5.83	6.83
						6.83	7.77

TAIGA CONSULTANTS LTD.

DIAMOND DRILL LOG

CLIENT: Abermin Corporation
PROJECT: Sturgeon Narrows ONT-87-2Area: Sturgeon Lake
Core Size: AW
Total Length: 7.67 mLatitude:
Departure:
Elevation: 2.15 mBearing:
Inclination @ collar -90
Inclination @ _____ mDate Started: Jun 10 87 Hole No.
Date Completed: Jun 11 87 Sheet:
Logged by: R.E.Chisholm/ Taiga Consult

FROM (m)	TO (m)	INTER (m)	LITHOLOGY	REC (%)	SAMPLE NUMBER	FROM (m)	TO (m)	I
CORE RECOVERY: meterage:			0.00-2.09 m	75				
			2.09-3.91 m	103				
			3.91-5.53 m	98				
			5.53-7.67 m	91				
Total recovery for hole:			91%					
0.00	7.23	7.23	SYENITE, light pink, medium-grained, massive; 15% disseminated ankerite; 10% light green chlorite(?); 1-4% disseminated pyrite as cubes up to 5 mm; quartz veining with thin ankerite selvages 2.0 to 4.6 m, frequency 1/15 cm; thickness 1 mm to 2 cm; core angles 21, 28 degrees			0.00	1.00	
			0.00-0.60 variably decomposed zones, limonitic			1.00	2.00	
			1.15-1.40 variably decomposed zones, limonitic			2.00	3.00	
			2.09-2.45 variably decomposed zones, limonitic			3.00	4.00	
			2.95-3.23 variably decomposed zones, limonitic			4.00	5.00	
			5.50-5.53 variably decomposed zones, limonitic			5.00	6.00	
			6.20-6.40 vertical fracture			6.00	7.23	
7.23	7.67	0.44	SYENITE, greyish-red, medium-grained, massive to porphyritic (in chlorite), weakly magnetic, groundmass slightly hematized; no pyrite. 5-15% disseminated ankerite with chlorite cores; 5% magnetite, finely disseminated.			7.23	7.67	



Name and Postal Address of Recorded Holder

ABEON CORPORATION Primrose Gold Resources Inc.

T-4657 15123

#1500, 1075 West Georgia Street, Vancouver, B.C. V6E 3G9
500-67 Richmond St. W. Toronto Ont. M5H 1Z5

Summary of Work Performance and Distribution of Credits

Table with columns: Total Work Days Cr. claimed (223), Mining Claim Prefix/Number, Work Days Cr., Mining Claim Prefix/Number, Work Days Cr. Includes checkboxes for Manual Work, Shaft Sinking, etc.

All the work was performed on Mining Claim(s): Pa 704623

Required Information eg: type of equipment, Names, Addresses, etc. (See Table Below) Sixmile Lake G 2561

drill holes SN-2, SN-3, SN-4
total footage 90.81 feet
all holes drilled on Pa 704623

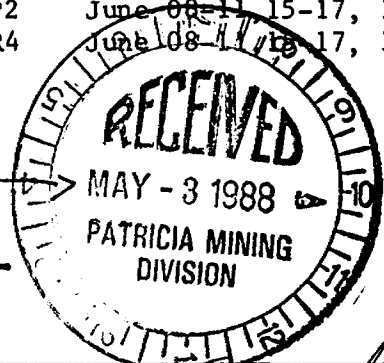
crew men:

Les Allen Box 128 Gabriola Island, BC VOR 1X0 June 08-11, 1987
Brian Fyke 1120 Lake Wapta Rd. SE Calgary, Alberta T2J 2P2 June 08-11, 15-17, 1987
Ian Young 3609 - 1A Street SW Calgary, Alberta T2S 1R4 June 08-11, 15-17, 1987

90.81 feet drilled / 1 day credit / 4 feet drilled = 22 3/4 days credit

ONTARIO GEOLOGICAL SURVEY ASSESSMENT FILES OFFICE MAY 20 1988 RECEIVED

Recorded [Signature]



Date of Report Aug. 21/87 Recorded Holder or Agency (Signature)

Certification Verifying Report of Work

I hereby certify that I have a personal and intimate knowledge of the facts set forth in the Report of Work annexed hereto, having performed the work or witnessed same during and/or after its completion and the annexed report is true.

Name and Postal Address of Person Certifying

Robin E. Chisholm Taiga Consultants Ltd. #100, 1300 - 8th St. S.W.

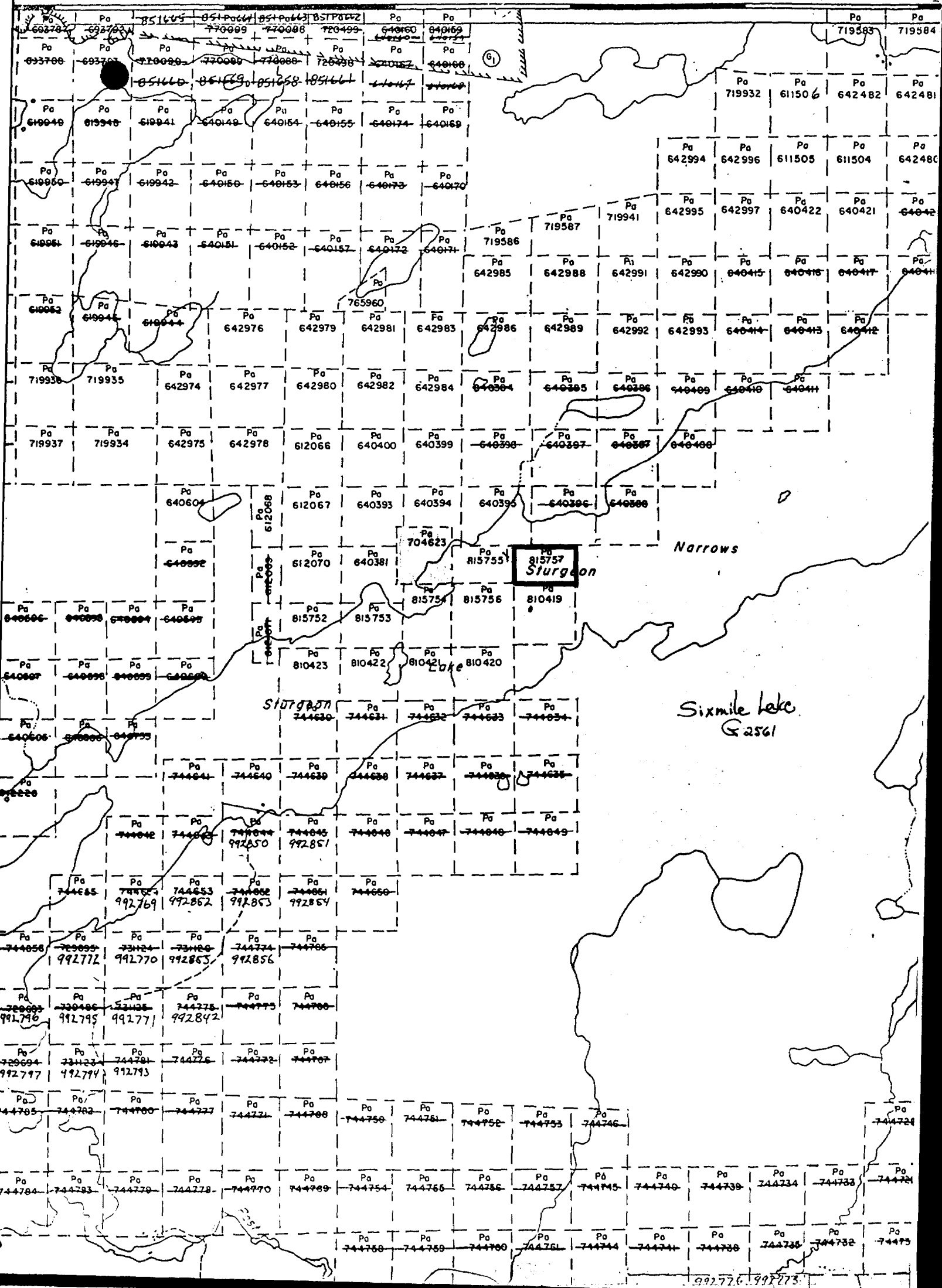
Calgary, Alberta T2R 1B2

Date Certified Oct. 2, 1987

Certified by (Signature)

Table of Information/Attachments Required by the Mining Recorder

Table with 4 columns: Type of Work, Specific information per type, Other information (Common to 2 or more types), Attachments. Rows include Manual Work, Shaft Sinking, Compressed air, Power Stripping, Diamond or other core drilling, Land Survey.



851605 851606 851607 851608 851609 851610

770009 770010 770011 770012 770013 770014

851611 851612 851613 851614 851615 851616

640150 640151 640152 640153 640154 640155

640156 640157 640158 640159 640160 640161

640162 640163 640164 640165 640166 640167

640168 640169 640170 640171 640172 640173

640174 640175 640176 640177 640178 640179

640180 640181 640182 640183 640184 640185

640186 640187 640188 640189 640190 640191

640192 640193 640194 640195 640196 640197

640198 640199 640200 640201 640202 640203

640204 640205 640206 640207 640208 640209

640210 640211 640212 640213 640214 640215

640216 640217 640218 640219 640220 640221

640222 640223 640224 640225 640226 640227

640228 640229 640230 640231 640232 640233

640234 640235 640236 640237 640238 640239

640240 640241 640242 640243 640244 640245

640246 640247 640248 640249 640250 640251

640252 640253 640254 640255 640256 640257

640258 640259 640260 640261 640262 640263

640264 640265 640266 640267 640268 640269

640270 640271 640272 640273 640274 640275

640276 640277 640278 640279 640280 640281

640282 640283 640284 640285 640286 640287

640288 640289 640290 640291 640292 640293

640294 640295 640296 640297 640298 640299

640300 640301 640302 640303 640304 640305

640306 640307 640308 640309 640310 640311

640312 640313 640314 640315 640316 640317

640318 640319 640320 640321 640322 640323

640324 640325 640326 640327 640328 640329

640330 640331 640332 640333 640334 640335

640336 640337 640338 640339 640340 640341

640342 640343 640344 640345 640346 640347

640348 640349 640350 640351 640352 640353

640354 640355 640356 640357 640358 640359

640360 640361 640362 640363 640364 640365

640366 640367 640368 640369 640370 640371

640372 640373 640374 640375 640376 640377

640378 640379 640380 640381 640382 640383

640384 640385 640386 640387 640388 640389

640390 640391 640392 640393 640394 640395

640396 640397 640398 640399 640400 640401

640402 640403 640404 640405 640406 640407

640408 640409 640410 640411 640412 640413

640414 640415 640416 640417 640418 640419

Narrows

Sturgeon

Sixmile Lake Gasli

815757
Sturgeon

992776 992773