



Diamond Drilling

Area of Dunne Lake

Report NO 10

Work performed by: N. A. Timmins Expl. Ltd.

Claim NO	Hole NO	Footage	Date	Note
Pa 17743	1	605'	July/57	
	2	402'	Aug/57	
Pa 17742	3	802'	Aug/57	
Pa 17745	4	615'	Aug/57	
	5	444'	Aug/57	
Pa 17746	6	52'	Sept/57	
Pa 19603	7	700'	Sept/57	

TOTAL. 7DH

3620 FT

Notes:

DIAMOND DRILL LOG

9-3-179

N. A. TIMMINS (1938) LIMITED

Operation LAKE SASSAFRAS

Location: CL.NO.PA.27743

Hole No: 1

Elevation:

Level: SURFACE

Started: JULY 22ND, 1957

Latitude: 91 / 00 N.

Finished: JULY 31ST, 1957

Departure: LINE 132-E

Bearing: NORTH

Angle: 45°

Logged By: L.G. SMITH

Length: 605 FT.

Drill Co.: BOYLES BROS.

Purpose: EXPLORING MAGNETIC ZONE

Depth Feet	Description	Sample No.	Assay
0 - 8	Casing (overburden)		
8 - 23	Tuff		
23 - 36	Syenite		
36 - 40.5	Tuff		
40.05-43	Syenite		
43-150	Tuff		
150-490	Iron Formation 340'		
490-518	Greenstone		
518-543	Tuff		
543-605	Syenite		

RESIDENT ENGINEER:

L. G. Smith
L. G. SMITH

DIAMOND DRILL LOG

9-3-179

N. A. TIMMINS (1938) LIMITED

Operation LAKE SASSAFRAS

Location: CL.NO.17743

Hole No: 2

Elevation:

Level: SURFACE

Started: AUG.1ST, 1957

Latitude: 91 / 00 N.

Finished: AUG.9, 1957

Departure: LINE 132-E

Bearing: SOUTH

Angle: 45°

Logged By: L.G.SMITH

Length: 402 FT.

Drill Co.: BOYLES BROS.

Purpose: EXPLORING MAGNETIC ZONE

Depth Feet	Description	Sample No.	Assay
0 - 5	Casing (overburden)		
5-131.5	Tuff		
131.5-138	Syenite		
138-153	Iron Formation 15'		
153-170	Syenite		
170-175	Iron Formation 5'		
175-184.5	Tuff		
184.5-262.5	Syenite		
262.5-264.5	Iron Formation 2'		
264.5-272.5	Syenite		
272.5-287	Iron Formation 15'		
287-325	Syenite		
325-338	Iron Formation 13'		
338-402	Tuff		

RESIDENT ENGINEER:

L. G. Smith
L. G. SMITH

DIAMOND DRILL LOG

9-3-179

N. A. TIMMINS (1938) LIMITED

Operation LAKE SASSAFRAS

Location: CL.NO.17742

Hole No: 3

Elevation:

Level: SURFACE

Started: AUG.11TH, 1957

Latitude: 95 / 00 N.

Finished: AUG. 21ST, 1957

Departure: LINE 132-E

Bearing: NORTH

Angle: 45°

Logged By: L.G.SMITH

Length: 802 ft.

Drill Co.: BOYLES BROS

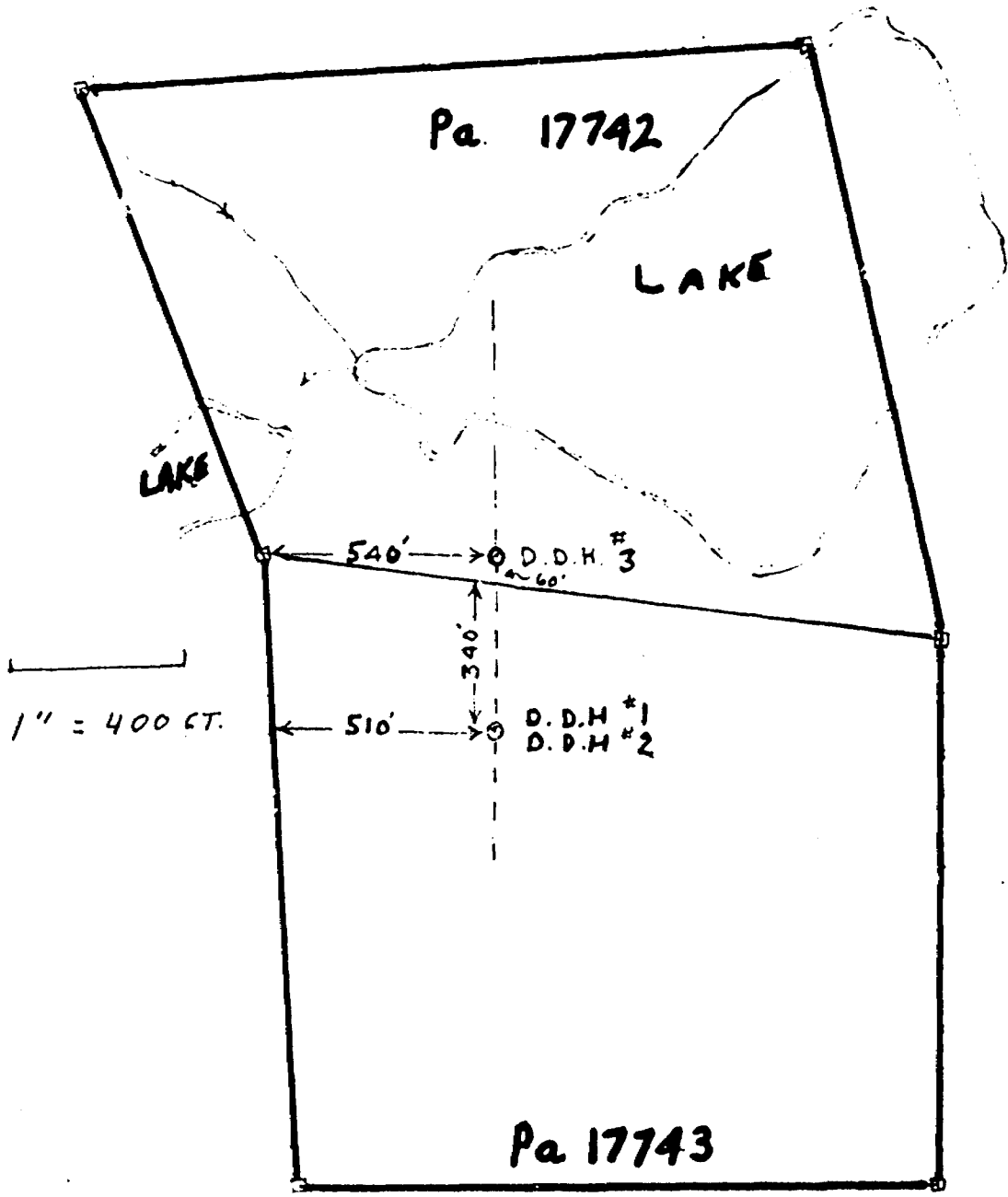
Purpose: EXPLORING MAGNETIC ZONE

Depth Feet	Description	Sample No.	Assay
0 - 37	Casing (overburden)		
37-41.5	Syenite		
41.5-70	Iron Formation 28		
70-88.5	Tuff		
88.5-89.5	Iron Formation 1		
89.5-162	Diorite		
162-802	Syenite and Diorite		

RESIDENT ENGINEER:

L. G. Smith
L. G. SMITH

17



N. A. TIMMINS EXPLORATIONS (ONTARIO) LIMITED
MINING CLAIMS PA. 17742, 17743
PLAN SHOWING LOCATION
OF DIAMOND DRILL HOLES

NOS. 1, 2, 3.

Scale: 1 inch = 400 feet.

9-2-140

DIAMOND DRILL LOG

N. A. TIMMINS (1938) LIMITED

Operation LAKE SASSAPRAS

Location: Cl.No.Pa.17745
Sta.91 / 00

Hole No: 4

Elevation:

Level: Surface

Started: Aug.23rd, 1957

Latitude: 91 / 00 N.

Finished: Aug.29th, 1957

Departure: Line 112-E

Bearing: North

Angle: 40°

Logged By: L. G. Smith

Length: 615 Ft.

Drill Co.: Boyles Bros.

Purpose: Exploring Magnetic Zone

Depth Feet	Description	Sample No.	Assay
0-26.5	Casing (Overburden, sand and boulders)		
26.5-32	Diorite		
32-37	Iron Formation 5		
37-80	Diorite		
80-87	Iron Formation 7		
37-93.5	Diorite		
93.5-109.5	Tuff		
109.5-225	Iron Formation 115		
225-250	Tuff		
250-289	Greenstone		
289-474	Syenite		
474-500	Greenstone		
500-615	Syenite		



L. G. Smith

L. G. SMITH

DIAMOND DRILL LOG

9-2-140

N. A. TIMMINS (1938) LIMITED

Operation LAKE SASSAFRAS

Location: Cl.No. 17745
Sta. 91 / 00

Hole No: 5

Elevation:

Level: Surface

Started: Aug. 30th, 1957

Latitude: 91 / 00 N.

Finished: Sept. 4th, 1957

Departure: Line 112-E

Bearing: South

Angle: 45°

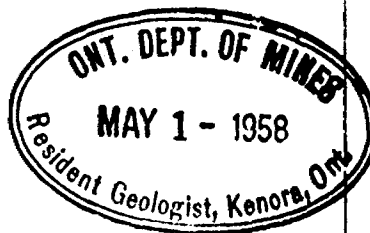
Logged By: L.G. Smith

Length: 444 Ft.

Drill Co.: Boyles Bros.

Purpose: Exploring Magnetic Zone

Depth Feet	Description	Sample No.	Assay
0-21	Casing		
21-24	Tuff		
24-64	Diorite		
64-80	Tuff		
80-390	Iron Formation 310		
390-413.5	Garnetiferous Schist		
413.5-441	Tuff		
441-444	Greenstone		



L. G. Smith
L. G. SMITH

DIAMOND DRILL LOG

9-1-141

N. A. TIMMINS (1938) LIMITED

Operation LAKE SASSAFRAS

Location: Cl.No.Pa.17746

Hole No: 6

Elevation:

Level: Surface

Started: Sept 6, 1957

Latitude: 97 / 50 N.

Finished: Sept.11, 1957

Departure: Line 100-E

Bearing: South

Angle: 45°

Logged By: L.G.Smith

Length: 52 Ft.

Drill Co.: Boyles Bros.

Purpose: Exploring Magnetic Zone

Depth Feet	Description	Sample No.	Assay
0 - 52	Casing (Overburden, sand and boulders) This hole failed to reach bedrock		




 L. G. SMITH

DIAMOND DRILL LOG

9-1-142

N. A. TIMMINS (1938) LIMITED

Operation LAKE SASSAFRAS

Location: Cl. No. Pa. 19603
Sta. 91 / 60

Hole No: 7

Elevation:

Level: Surface

Started: Sept. 12th, 1957

Latitude: 91 / 60 N

Finished: Sept. 24th, 1957

Departure: Line 100-E

Bearing: North

Angle: 45°

Logged By: L.G. Smith

Length: 700 Ft.

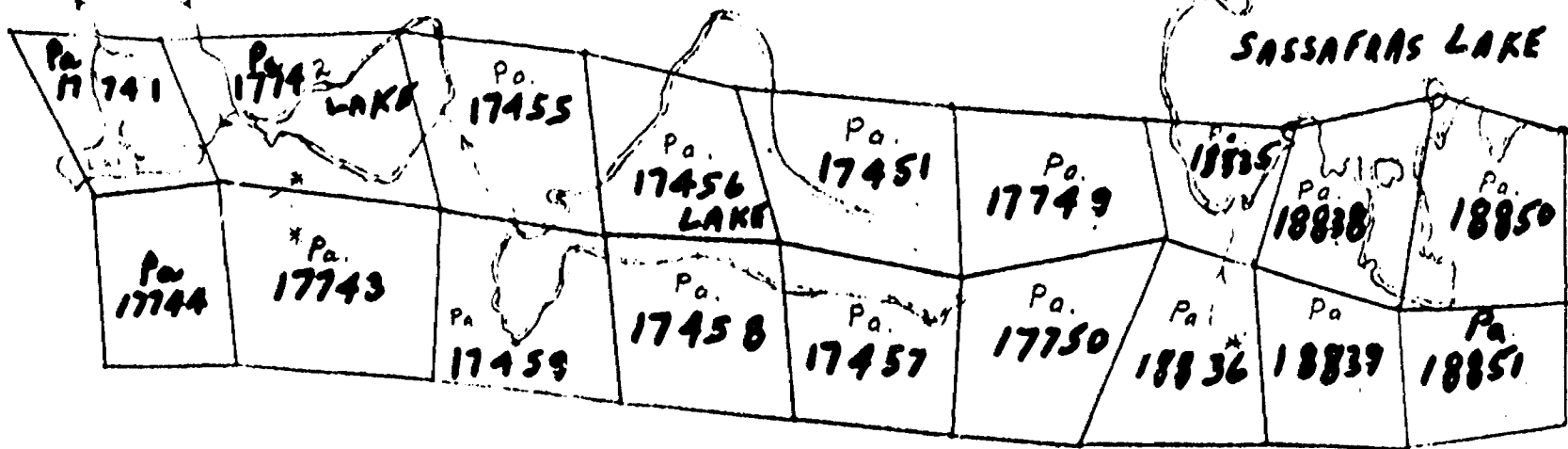
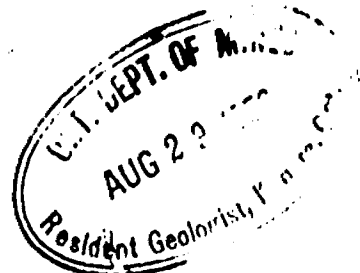
Drill Co.: Boyles Bros.

Purpose: Exploring Magnetic Zone

Depth Feet	Description	Sample No.	Assay
0-55	Casing (Overburden, sand and gravel)		
55-375	Diorite, syenite		
375-407	Iron Formation 32		
407-470	Syenite		
470-534	Iron Formation 64		
534-700	Syenite		



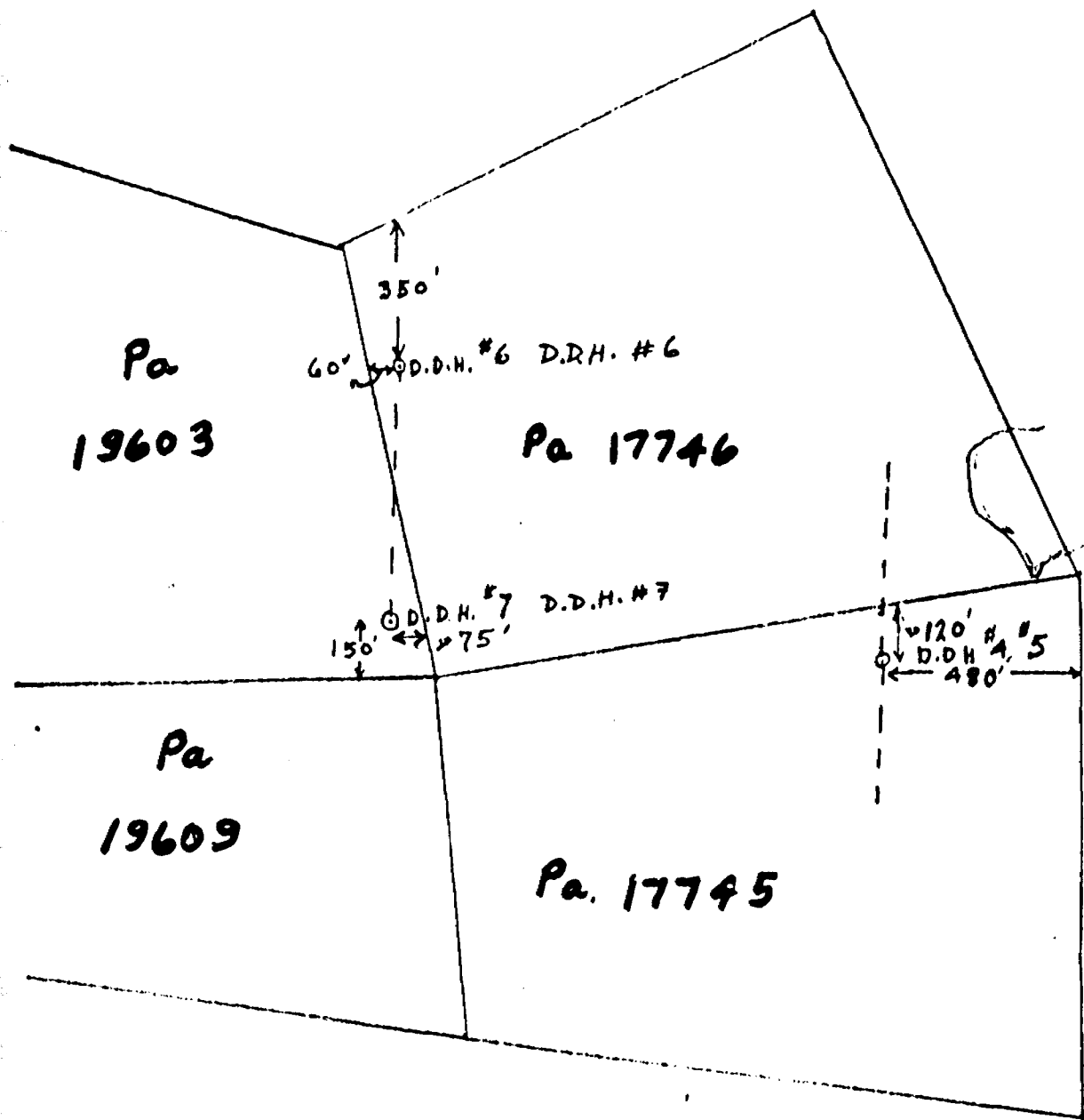
L. G. Smith
L. G. SMITH




1" = 1/4 mi.

N. A. TIMMINS EXPLORATIONS (ONTARIO) LIMITED
PATRICIA MINING DIVISION
PLAN SHOWING 18 MINING CLAIMS
GROUPED FOR DIAMOND DRILL HOLES
NOS. 1, 2, 3.

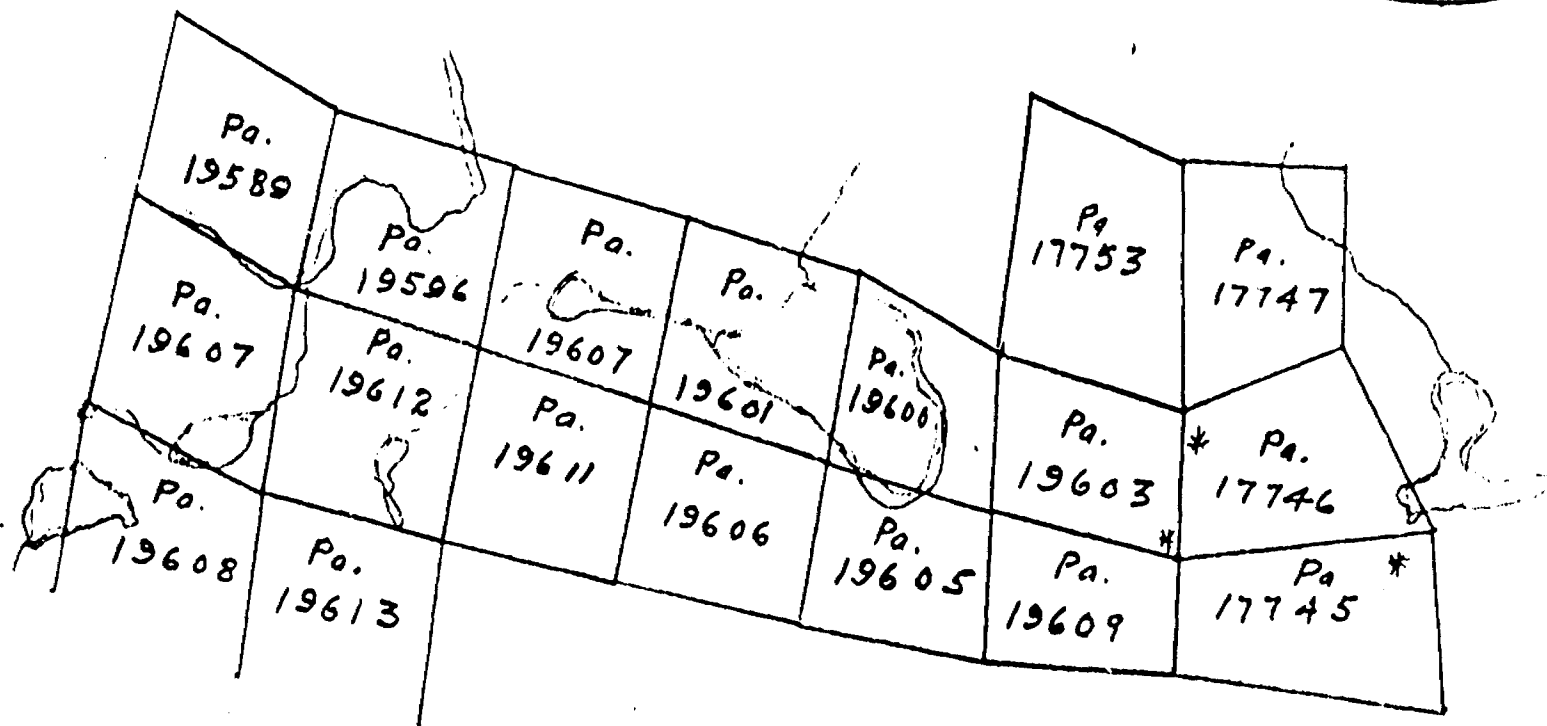
Scale: 1 inch - 1/4 Mile




 1" = 1/4 MI

N.A. TIMMINS EXPLORATIONS (ONTARIO) LIMITED
 PATRICIA MINING DIVISION
 PLAN SHOWING LOCATION
 OF
 DIAMOND DRILL HOLES #4, #5, #6, #7

DIV
LAKE



1" = 1/4 MI.

N. A. TIMMINS EXPLORATIONS (ONTARIO) LIMITED
PATRICIA MINING DIVISION
PLAN SHOWING 18 CLAIMS
GROUPED FOR ASSESSMENT WORK
DIAMOND DRILL HOLES #4, #5, #6, #7

Scale: 1 inch = 1/4 mile