



52G15SW0006 52G15SW0012B1 BELL LAKE

010

DIAMOND DRILLING

Area: BELL LAKE

Report No: 23

WORK PERFORMED FOR: MATTAGAMI LAKE MINES LIMITED

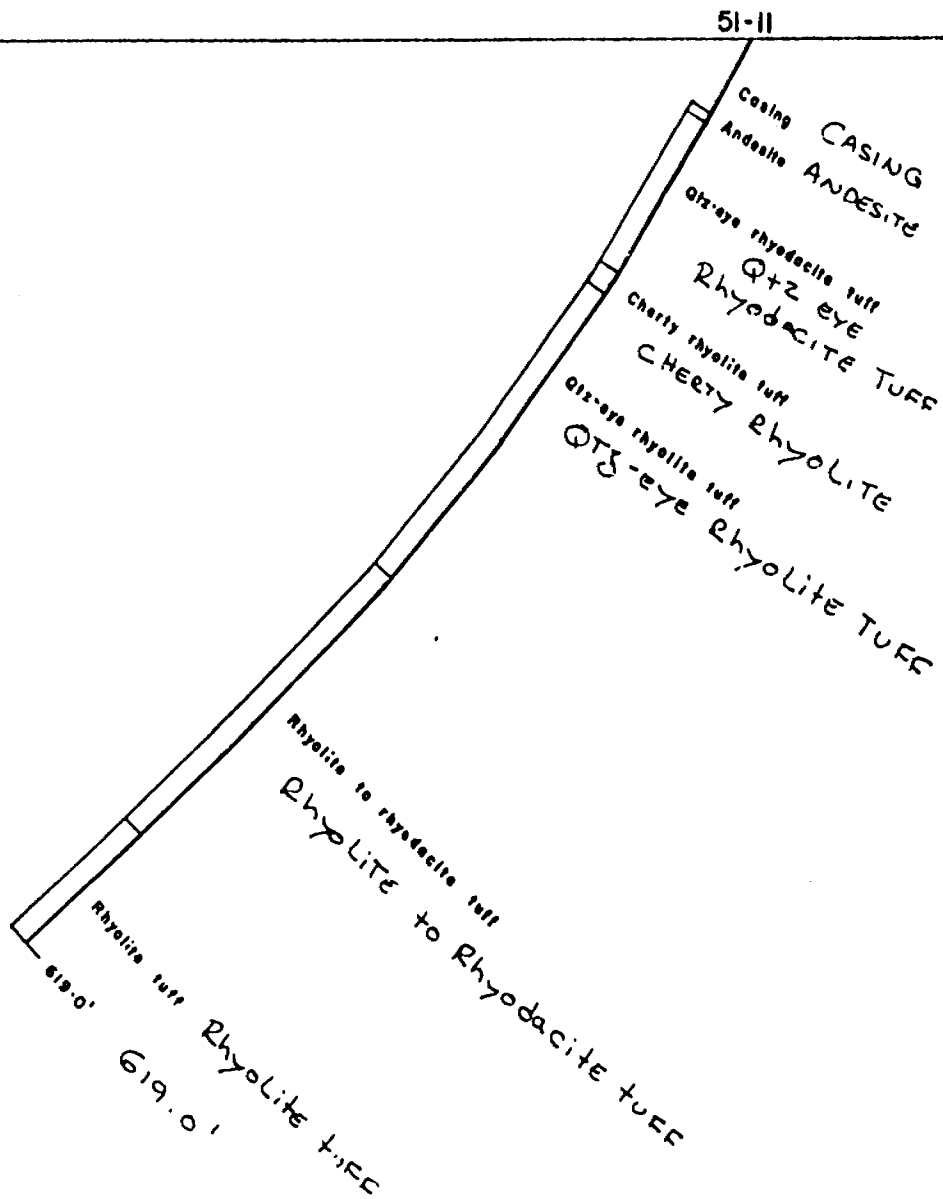
RECORDED HOLDER: SAME AS ABOVE [x]

: OTHER []

<u>CLAIM NO.</u>	<u>HOLE NO.</u>	<u>FOOTAGE</u>	<u>DATE</u>	<u>NOTE</u>
PA 312520	SL-51-74-11	619'	Jan/74	(1)
	SL-51-74-12	497"	Jan/74	(1)
PA 312522	SL-51-74-13	599'	Feb/74	(1)
PA 312521	SL-51-74-14	1018'	Feb/74	(1)
<u>TOTAL</u>	<u>4 DH</u>	<u>2733 FT</u>		

NOTES: (1) #1/75 (Penassi Lake)

← S. 25° W. →



MATTAGAMI LAKE MINES LTD.

EXPLORATION DIVISION

PROJECT: STURGEON LAKE

SECTION: 132+00 E.

D.D.H.# SL-51-74-11

SCALE: 1" = 100 FEET

DATE: JAN. 7, 1975

DRW. BY: R.S.



Pa. 312519

Pa. 312522

SL-51-74-13

SL-51-74-11

SL-51-74-12

Pa. 312520

Pa. 312521

Pa. 225675

MATTAGAMI LAKE MINES LTD.
EXPLORATION DIVISION

PROJECT: STURGEON LAKE
SECTION: PLAN
D.D.H.# SL-51-74-11, 12 & 13

SCALE: 1" = 200 FEET

DATE: JAN. 7, 1976

DRW. BY: R.S.

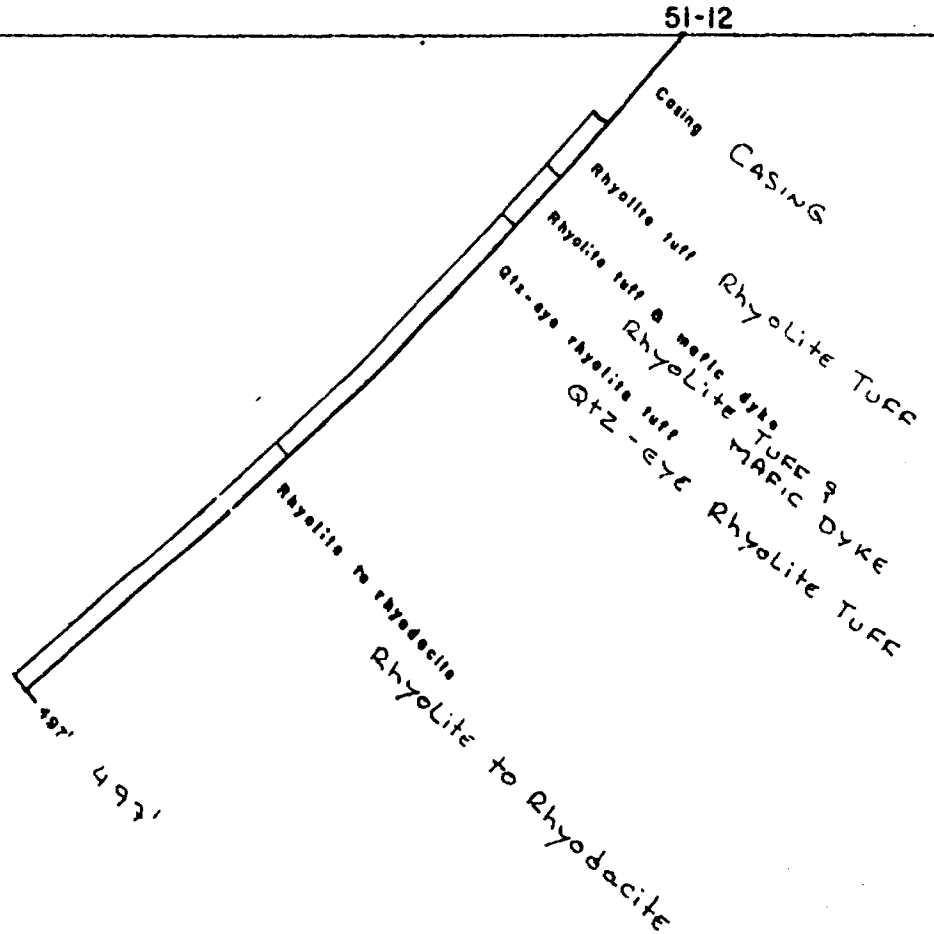
MATTAGAMI LAKE MINES LIMITED - EXPLORATION DIVISION - DIAMOND DRILL HOLE RECORD

PROPERTY	Sturgeon Lake Claim Group	LATITUDE	12 + 00 S	STARTED	January 24, 1974	DIP TEST					
HOLE NO.	SL-51-74-12	DEPARTURE	140 + 00 E	FINISHED	January 29, 1974	Footage	Corrected	Footage	Corrected	Footage	Corrected
BEARING	Grid South 205°	ELEVATION	Surface	LENGTH	497.0 ft.	100'	47°	400'	40°		
DIP-COLLAR	-50°	SECTION	140 + 00 E	LOGGED BY	R. Brown	200'	45°				
						300'	42°				

FOOTAGE		DESCRIPTION	% Mineralization	SAMPLE NO.	FOOTAGE			ASSAYS						
From	To				From	To	Length	Au	Ag	Zn	Cu	Pb		
0	60.0	CASING BEDROCK AT 54.0 ft.												
60.0	99.8	RHYOLITE TUFF Light blue grey. Amorphous grey qtz. -feldspar matrix with carbonates & chloritoid along shear planes. Shear planes are poorly developed but prominent. Minor garnet up to 3 mm. Minor po, py.	1 py	33901	96.8	99.0	1.0			.07	.01			
99.8	137.1	RHYOLITE TUFF AND MAFIC DYKE/SILLS As section 60.0 to 99.8 but with numerous mafic dyke/sills: Biotite chlorite carbonate schist.												
137.1	159.0	QUARTZ EYE RHYOLITE TUFF Light blue grey. Well developed intense blue qtz. eyes. Amorphous grey matrix of qtz. -feldspar with biotite along shear planes.	3 py	33902	151.0	153.0	2.0			.02	.02			
159.0	308.0	QUARTZ EYE RHYOLITE TUFF Light grey. Well developed intense blue qtz. eyes up to 3 mm. Amorphous light grey silica matrix cut by wavy discontinuous shear planes along which muscovite-sericite, carbonate and chloritoid are concentrated. Very minor mafic dyke/sill & chlorite garnet zones.	< 1 py 1 py Tr. py	33903 33904 33905	192.5 200.8 284.0	197.5 205.8 286.0	5.0 5.0 2.0			.02 .01 .07	Tr .01 Tr			
308.0	497.0	RHYOLITE TO RHYODACITE Dark blue grey. Amorphous silica with well developed shearing. much biotite & some sericite and chlorite. Very minor chlorite garnet zones. Minor qtz. stringers up to 0.5 ft. Minor mafic dyke/sill.												
497.0		END OF HOLE												

PATRICIA
MINING DIV.
R I F E W D
JAN 16 1975
AM 7:29:10 PM 12:12:45.6

← S. 25° W. →



MATTAGAMI LAKE MINES LTD.

EXPLORATION DIVISION

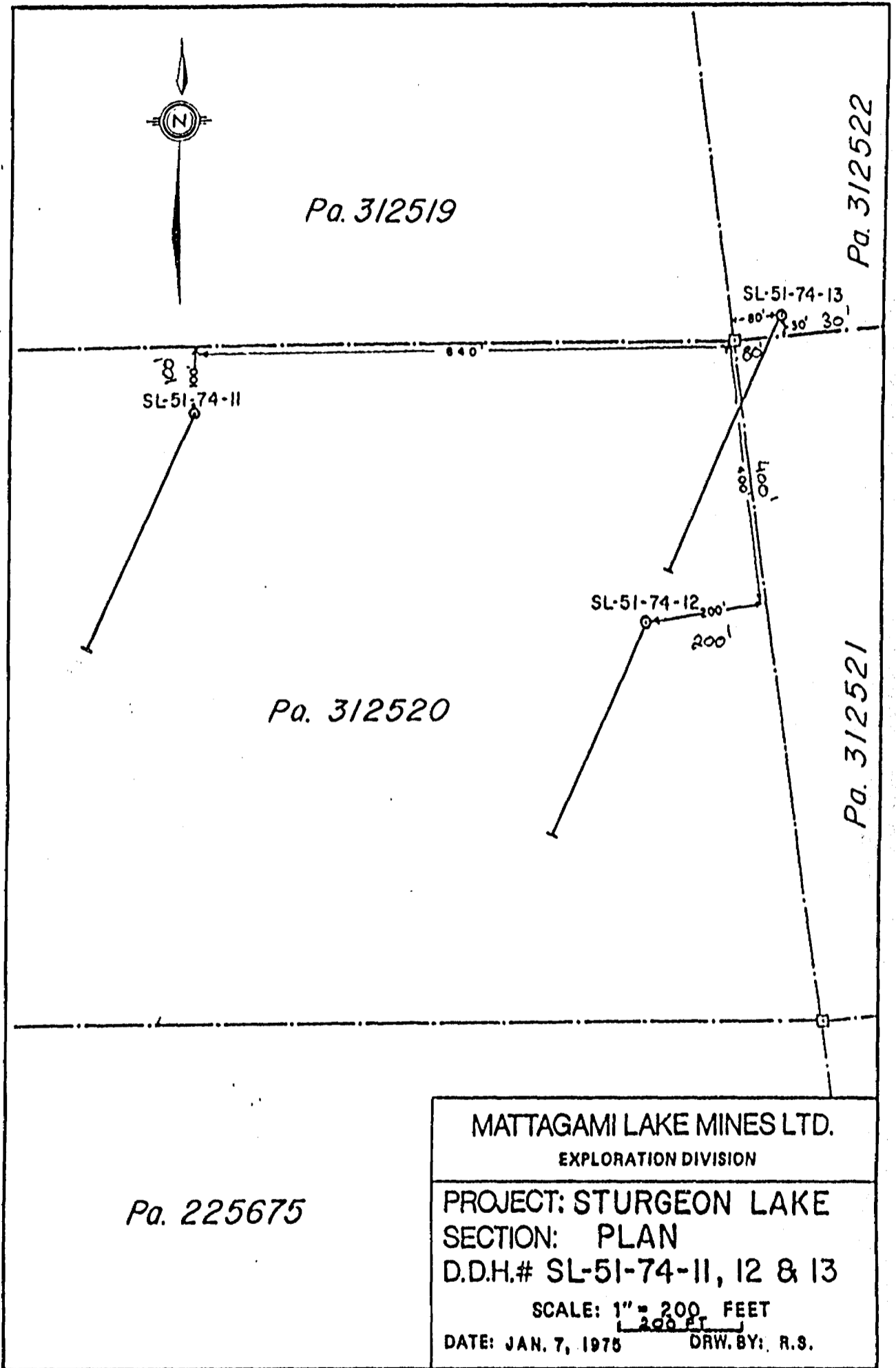
PROJECT: STURGEON LAKE

SECTION: 140+00 E.

D.D.H.# SL-51-74-12

SCALE: 1" = 100 FEET

DATE: JAN. 7, 1975 ^{100 FT} DRW. BY: R.S.



Pa. 312522

Pa. 312521

MATTAGAMI LAKE MINES LIMITED - EXPLORATION DIVISION - DIAMOND DRILL HOLE RECORD

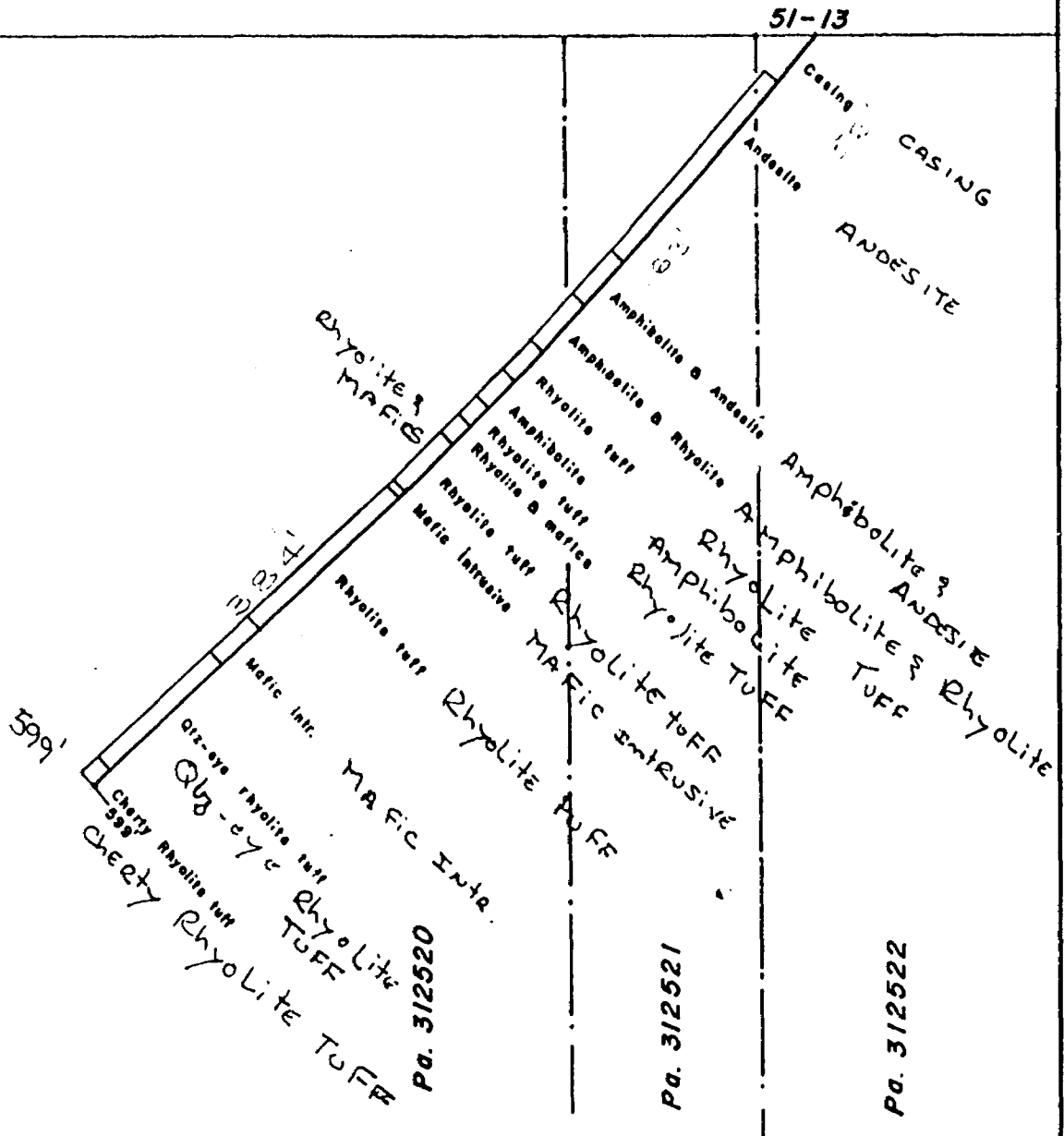
PROPERTY	Sturgeon Lake Claim Gp. 51	LATITUDE	7 + 00 S	STARTED	Feb 1.	DIP TEST					
HOLE NO.	SL-51-74-13	DEPARTURE	140 + 00 E	FINISHED	February 6, 1974	Footage	Corrected	Footage	Corrected	Footage	Corrected
BEARING	Grid South (705°00')	ELEVATION	Surface	LENGTH	599'	100'	48°	400'	42°		
DIP-COLLAR	-50°	SECTION	140 + 00 E	LOGGED BY	R. E. Brown	200'	46½°	500'	42°		
						300'	44½°				

FOOTAGE		DESCRIPTION	% Mineralization	SAMPLE NO.	FOOTAGE			ASSAYS						
From	To				From	To	Length	Au	Ag	Zn	Cu	Pb		
0	34.0	CASING (Bedrock at 20.0')												
34.0	171.0	ANDESITE FLOW Green. Amorphous chlorite, some silica/feldspar and biotite in thin bands up to 20 mm with milky qtz. stringers. Shearing well developed; hydrothermal alteration.												
171.0	204.0	AMPHIBOLITE INTRUSIVE & ANDESITE Intrusive is massive to slightly schistose actinolite, chlorite, silica & feldspar - vague irregular grains up to 2 mm. Minor sections of carbonitized andesite - as section 34.0 to 171.0.												
204.0	240.0	AMPHIBOLITE INTRUSIVE & RHYOLITE Intrusive as section 171 to 204. Minor rhyolite tuff as section 240 to 264 but more chlorite.												
240.0	264.0	RHYOLITE TUFF Blue grey. Amorphous grey silica & feldspar. Few distinct original grains. Banding vague & discontinuous. Minor carbonate stained fine fractures.												
264.0	285.0	AMPHIBOLITE INTRUSIVE As section 171 to 204.												
285.0	300.0	RHYOLITE TUFF As section 240 to 264.												
300.0	315.0	CHLORITIZED RHYOLITE & MAFIC INTRUSIVE Green & grey. Intrusive is fine biotite, carbonate & some chlorite. Thinly banded schistose to massive. Rhyolite is massive chlorite & garnets with some sections of sheared amorphous silica-feldspar.												
315.0	352.0	RHYOLITE TUFF Blue grey. Amorphous blue grey silica matrix with discontinuous chloritoid rich bands. Minor sections of massive chlorite with garnets and magnetite.												
			tr. py	33546	323	325	2.0				Nil	.04		
			5 po	33547	325	326	1.0				Nil	.02		
			tr. py	33548	326	328	2.0				Nil	Nil		

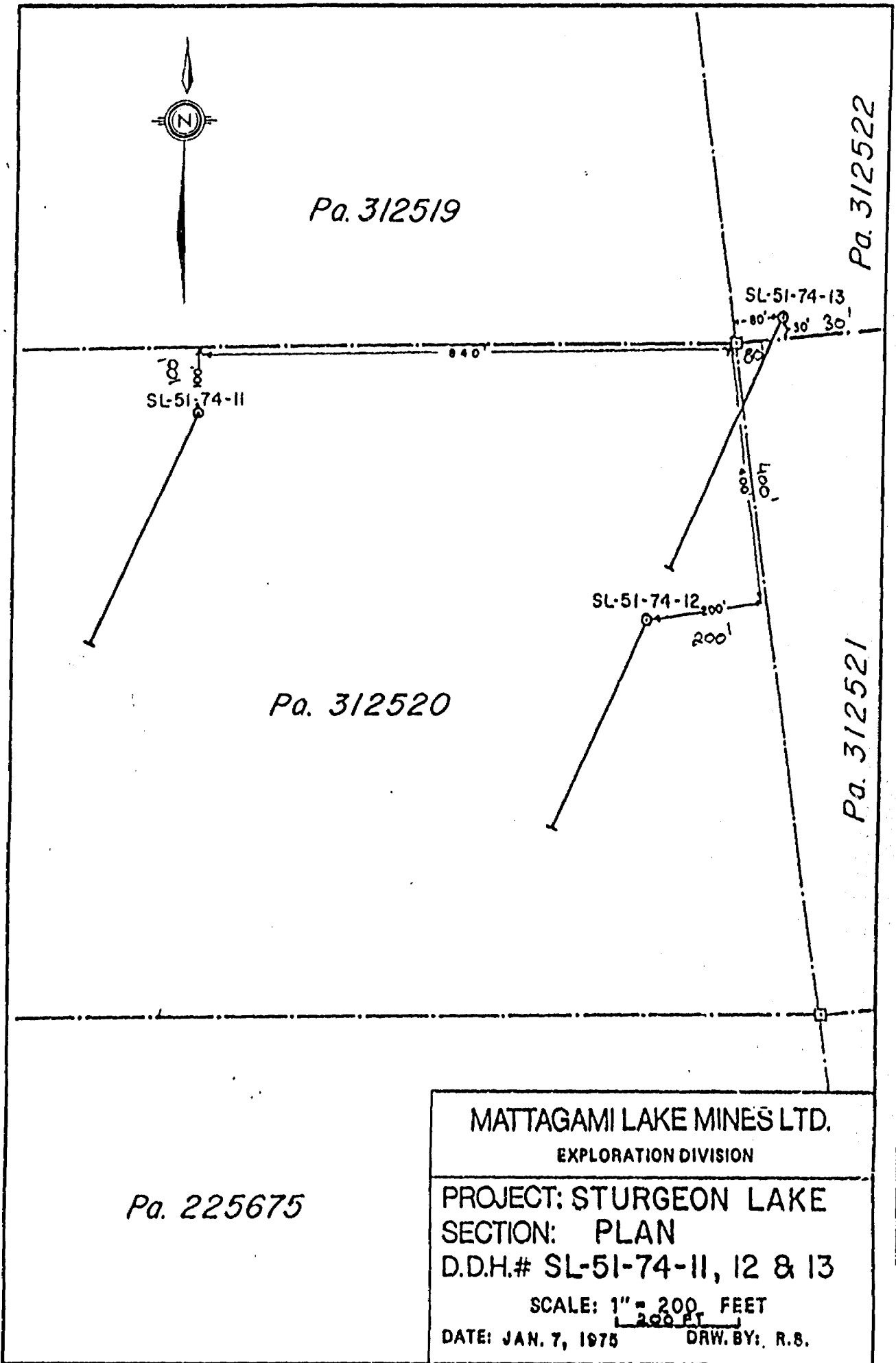
PATRICIA
 JUN 15 1975
 JUN 16 1975
 JUN 17 1975
 JUN 18 1975
 JUN 19 1975
 JUN 20 1975
 JUN 21 1975
 JUN 22 1975
 JUN 23 1975
 JUN 24 1975
 JUN 25 1975
 JUN 26 1975
 JUN 27 1975
 JUN 28 1975
 JUN 29 1975
 JUN 30 1975

FOOTAGE		DESCRIPTION	% Mineralization	SAMPLE NO.	FOOTAGE			ASSAYS						
From	To				From	To	Length	Au	Ag	Zn	Cu	Pb		
352.0	357.0	MAFIC INTRUSIVE As section 300.0 to 315.0.												
357.0	470.0	RHYOLITE TUFF Blue grey & buff. Amorphous blue grey silica feldspar matrix with discontinuous chloritoid rich bands and sericite bands throughout. Minor massive chlorite. Minor mafic dyke/sills up to 1 ft. (penecontemporaneous)	3 po, py	33549	366.2	368.2	2.0			.04	.01			
			1 po, py	33550	417.5	419.5	2.0			.02	.01			
470.0	499.5	MAFIC INTRUSIVE As section 300.0 to 315.0.												
499.5	587.8	QUARTZ EYE RHYOLITE TUFF Blue grey to green. Shearing well developed. Irregular discontinuous bands of sericite & silica, amorphous silica-feldspar, and chloritoid. Minor massive chlorite with garnets. Silicified throughout. No original grains discernable. Minor intense blue quartz eyes.												
587.8	599.0	CHERTY RHYOLITE TUFF Light grey. Amorphous silica with vague bands of chloritoid throughout.												
	599.0	END OF HOLE												

S. 25° W.



MATTAGAMI LAKE MINES LTD.
 EXPLORATION DIVISION
 PROJECT: STURGEON LAKE
 SECTION: 140+00 E.
 D.D.H.# SL-51-74-13
 SCALE: 1" = 100 FEET
 DATE: JAN. 7, 1975 DRW. BY: R.S.



Pa. 312519

Pa. 312522

SL-51-74-13

SL-51-74-11

Pa. 312520

SL-51-74-12

Pa. 312521

Pa. 225675

MATTAGAMI LAKE MINES LTD.
 EXPLORATION DIVISION
 PROJECT: STURGEON LAKE
 SECTION: PLAN
 D.D.H.# SL-51-74-11, 12 & 13
 SCALE: 1" = 200 FEET
 DATE: JAN. 7, 1975 DRW. BY: R.S.

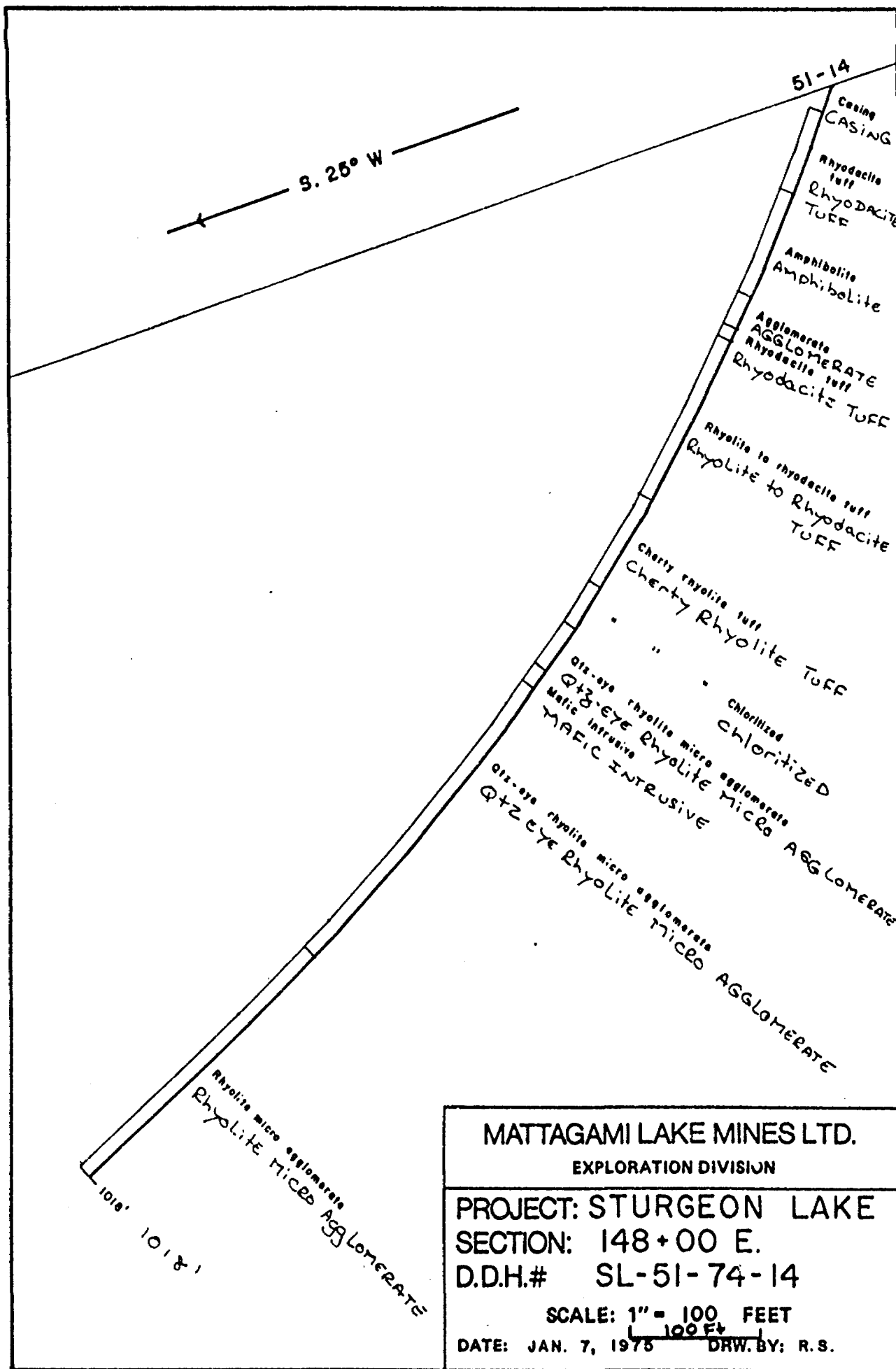
MATTAGAMI LAKE MINES LIMITED - EXPLORATION DIVISION - DIAMOND DRILL HOLE RECORD

PROPERTY	Claim Group 51 Sturgeon Lake	LATITUDE	6 + 00 S	STARTED	February 6, 1974	DIP TEST					
HOLE NO.	SL-51-74-14	DEPARTURE	148 + 00 E	FINISHED	February 18, 1974	Footage	Corrected	Footage	Corrected	Footage	Corrected
BEARING	Grid South (205°00')	ELEVATION	Surface	LENGTH	1018.0 ft.	100'	49°	400'	39°	700'	29½°
DIP-COLLAR	-50°	SECTION	148 + 00 E	LOGGED BY	R. E. Brown	200'	45½°	500'	35°	800'	26°
						300'	43°	600'	31½°	900'	24°

FOOTAGE		DESCRIPTION	% Mineralization	SAMPLE NO.	FOOTAGE			ASSAYS						
From	To				From	To	Length	Au	Ag	Zn	Cu	Pb		
0	22.0	CASING (Bedrock at 16.0')												
22.0	87.0	RHYODACITE TUFF Blue grey. Shearing well developed -35° core axis. Amorphous blue grey feldspar-silica with bands of chloritoid and milky qtz. Original grains visible in minor sections - rounded silica up to 2 mm. May represent metasomatized rhyolite tuff - directly beneath mafic flows.												
87.0	172.0	AMPHIBOLITE INTRUSIVE Green & grey. Shearing well developed. Actinolite up to 2.5 mm. Some biotite & much silica & carbonate.												
172.0	197.0	QUARTZ EYE RHYOLITE MICRO AGGLOMERATE Grey. Flattened amorphous silica-feldspar particles up to 11 mm in a matrix of (altered fine particles) chloritoid rich amorphous feldspar & silica. Shearing well developed. Minor intense blue quartz eyes up to 1.5 mm.	> 1 cp	33551	185.5	186.6	1.1	Nil	.29	.09	.94	.03		
197.0	208.0	RHYODACITE TUFF As section 22.0 to 87.0 with the original grains visible over much of the length.												
208.0	340.0	RHYOLITE TO RHYODACITE TUFF Grey. Amorphous blue grey feldspar matrix with chloritoid throughout (trachyte?). Massive chlorite up to 2 mm throughout (recrystallized) contains garnets up to 10 mm. Minor carbonate stringers up to 0.1 ft. 249 to 256 & 279 to 281 - Amphibolite intrusive.		33552	248.1	249.1	1.0	.013	.23	.04	.37	.01		
340.0	416.0	"CHERTY" RHYOLITE TUFF Light grey. Amorphous feldspar rich. Very fine original grains are visible in minor sections. Silicified throughout.												
416.0	452.0	CHLORITIZED CHERTY RHYOLITE TUFF As 340.0 to 416.0 but much massive chlorite and minor garnet. 437.0 to 442.0 ground.												

PATRICIA
MINING DIV.
REVIEW
JAN 15 1975
AM 10:34 PM

FOOTAGE		DESCRIPTION	% Mineralization	SAMPLE NO.	FOOTAGE			ASSAYS				
From	To				From	To	Length	Au	Ag	Zn	Cu	Pb
452.0	490.5	QUARTZ EYE RHYOLITE MICRO AGGLOMERATE Blue grey to green. Original grains up to 20 mm. Generally alteration is to extreme to distinguish grains. Intense blue quartz eyes throughout. Streaky serivite rich qtz. -feldspar roughly interbanded with massive/chlorite & silica. Chloritoid in tiny flecks throughout. Minor garnets throughout.		33553	452	453	1.0	Nil	.12	.03	.69	.01
490.5	505.0	MAFIC INTRUSIVE Fine biotite in carbonate & silica matrix. Massive to schistose.										
505.0	780.0	QUARTZ EYE RHYOLITE MICRO AGGLOMERATE As section 452.0 to 490.5.										
		Sulphide Mineralization in stringers with the massive chlorite - represents deeper seated copper rich stringer zone.	30 py	33554	525	527	2.0	Nil	.12	Tr	.01	.01
			20 py, tr, po	33555	537	539	2.0	Nil	Tr	.01	.02	.01
			3 cp, 2 po	33556	683.1	684.6	1.5	Nil	.12	.07	.77	.01
			>1 cp, 1 po	33557	711.0	712.0	1.0	Tr	.23	.03	1.01	Tr
			1 py	33906	712.0	716.0	4.0	Nil	.12	.13	.13	.02
			2 po, tr, cp	33558	716.0	717.0	1.0	Nil	Tr	.24	.14	.01
			1 py	33907	717.0	720.0	3.0	Nil	Nil	.38	.02	Tr
			1 py	33908	720.0	725.0	5.0	Nil	Nil	.25	Tr	Nil
			1 py	33909	725.0	730.0	5.0	Nil	Nil	.11	.02	Nil
			1 py	33910	730.0	735.0	5.0	.006	Nil	.07	.18	Nil
			1 py	33911	735.0	740.5	5.5	Nil	Nil	.03	.09	Nil
			7 cp, 5 po	33559	740.5	742.0	1.5	.009	.87	.19	2.72	.01
			2 po, tr, cp	33560	742.0	743.0	1.0	Nil	Tr	.03	.20	.01
			6 cp, 3 po	33561	743.0	745.0	2.0	.005	.64	.10	1.85	.01
			>1 cp, 1 po	33562	745.0	750.0	5.0	Nil	Tr	.02	.19	Tr
			tr, py	33912	750.0	755.0	5.0	Nil	Nil	.02	.04	Tr
			1 py	33913	755.0	760.0	5.0	Nil	Nil	.02	.03	Tr
780.0	1018.0	RHYOLITE MICRO AGGLOMERATE & INTRUSIVE Rhyolite as unit 505.0 - 780.0 but no sulphides. Intrusives as 87 to 172.	1 py	33914	760.0	755.0	5.0	Nil	Nil	.19	.02	Tr
			1 py	33915	765.0	770.0	5.0	Nil	Nil	.06	Tr	Nil
	1018.0	END OF HOLE										



MATTAGAMI LAKE MINES LTD.

EXPLORATION DIVISION

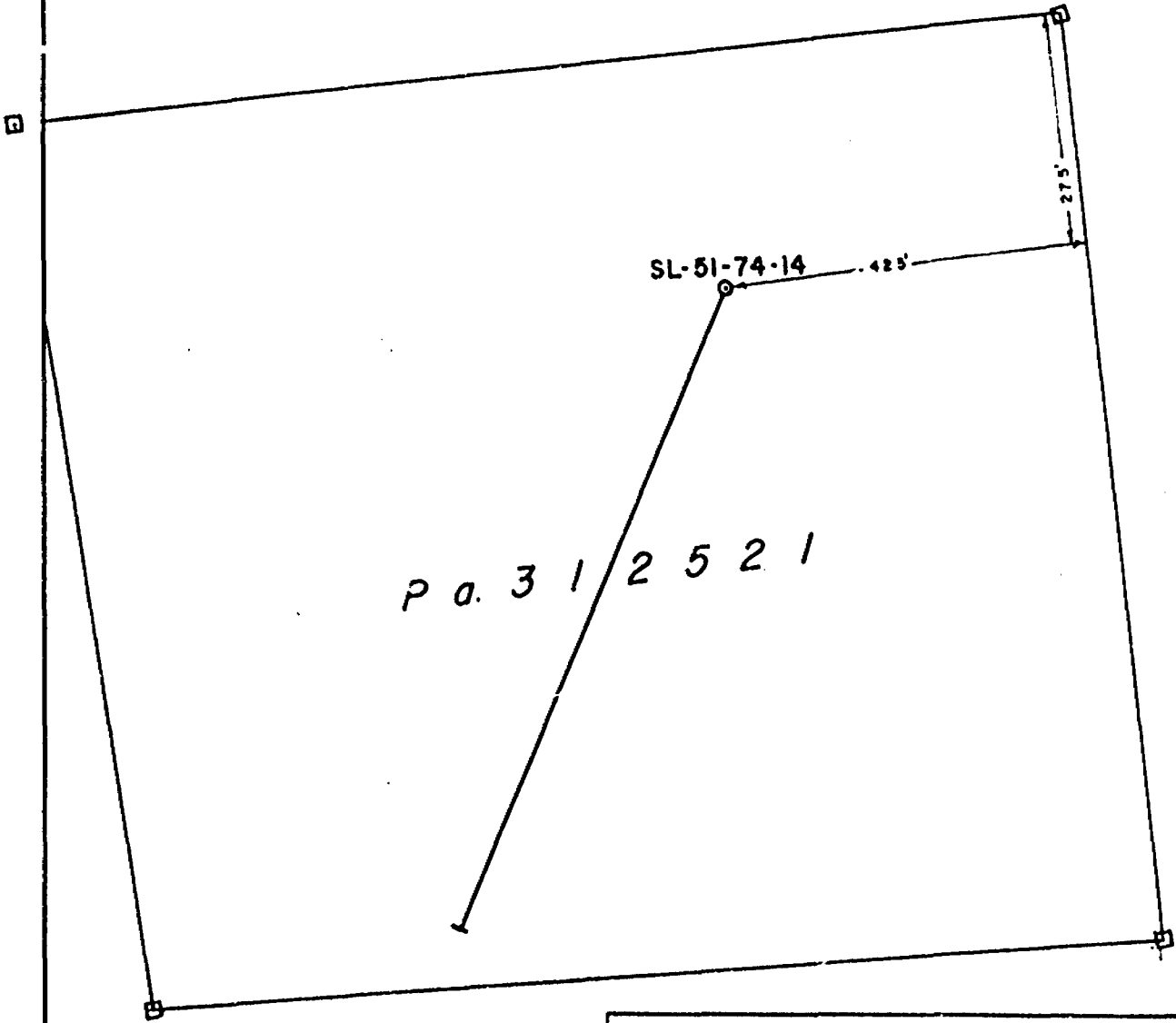
PROJECT: STURGEON LAKE

SECTION: 148+00 E.

D.D.H.# SL-51-74-14

SCALE: 1" = 100 FEET

DATE: JAN. 7, 1975 DRW. BY: R.S.



MATTAGAMI LAKE MINES LTD.

EXPLORATION DIVISION

PROJECT: STURGEON LAKE

SECTION: PLAN

D.D.H.# SL-51-74-14

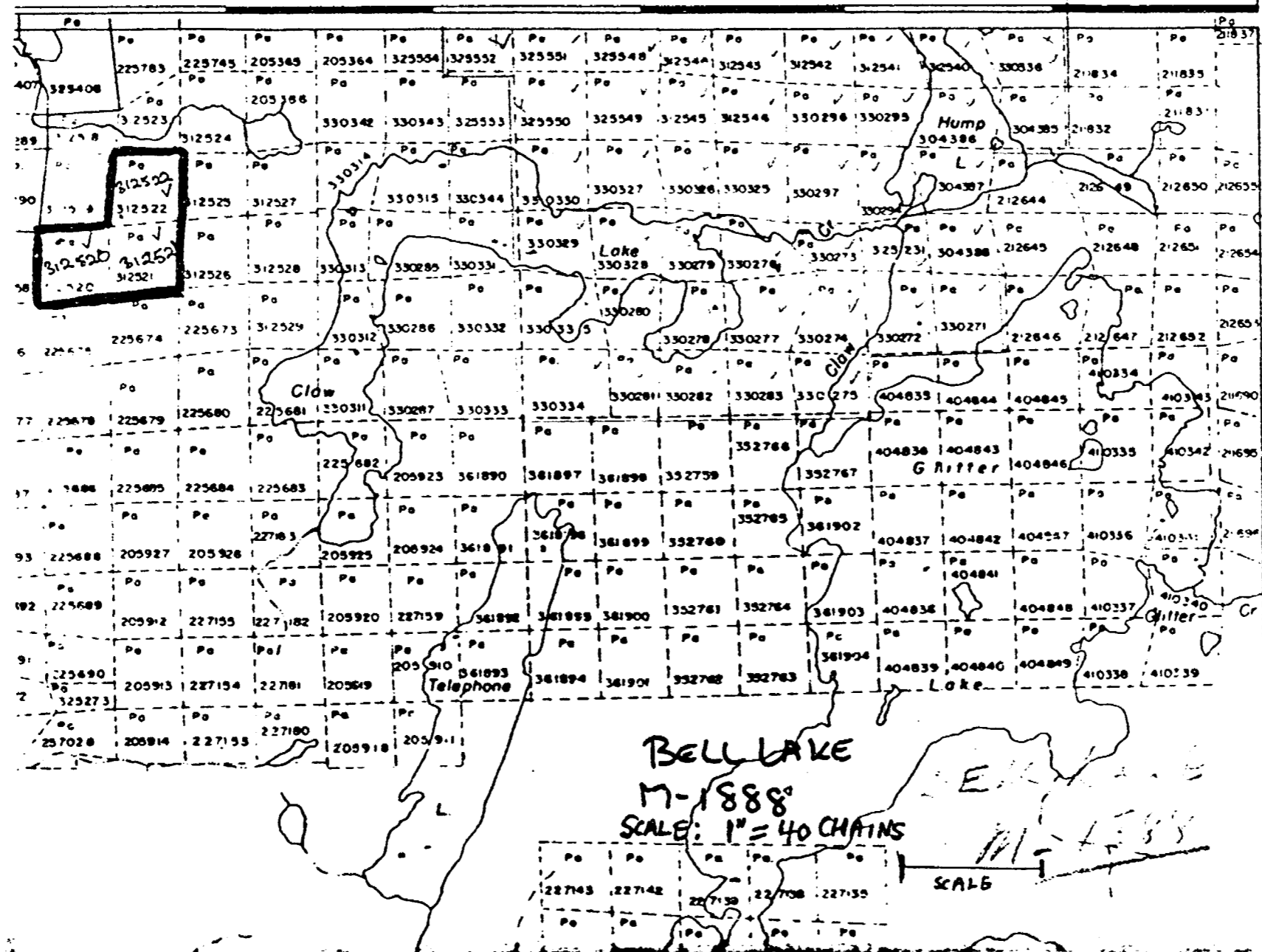
SCALE: 1" = 200 FEET

DATE: JAN. 8, 1975

DRW. BY: R.S.

90° 45' 00"

49° 52' 00"



52'

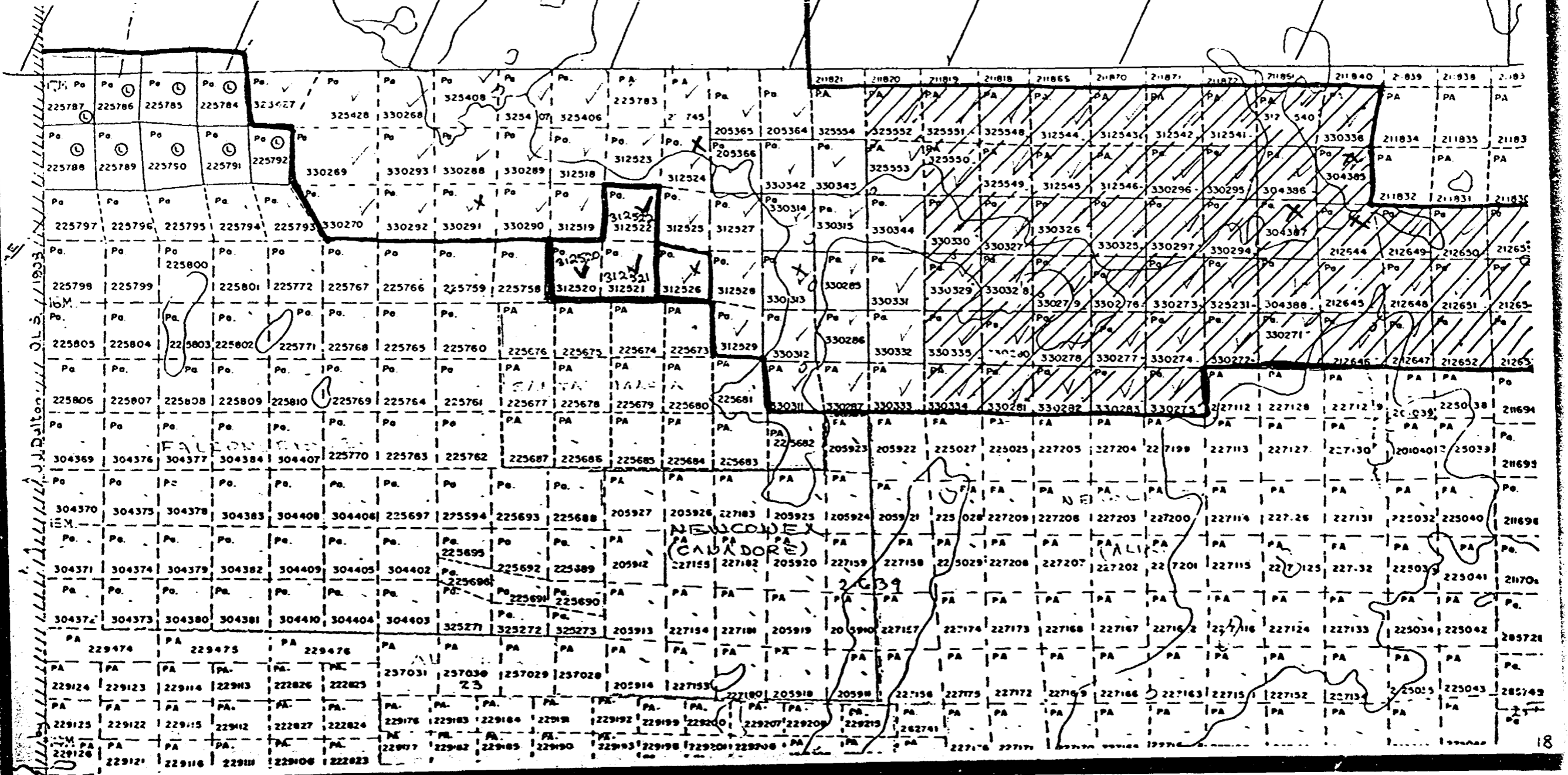
51'

50'

Location of STUDY AREA

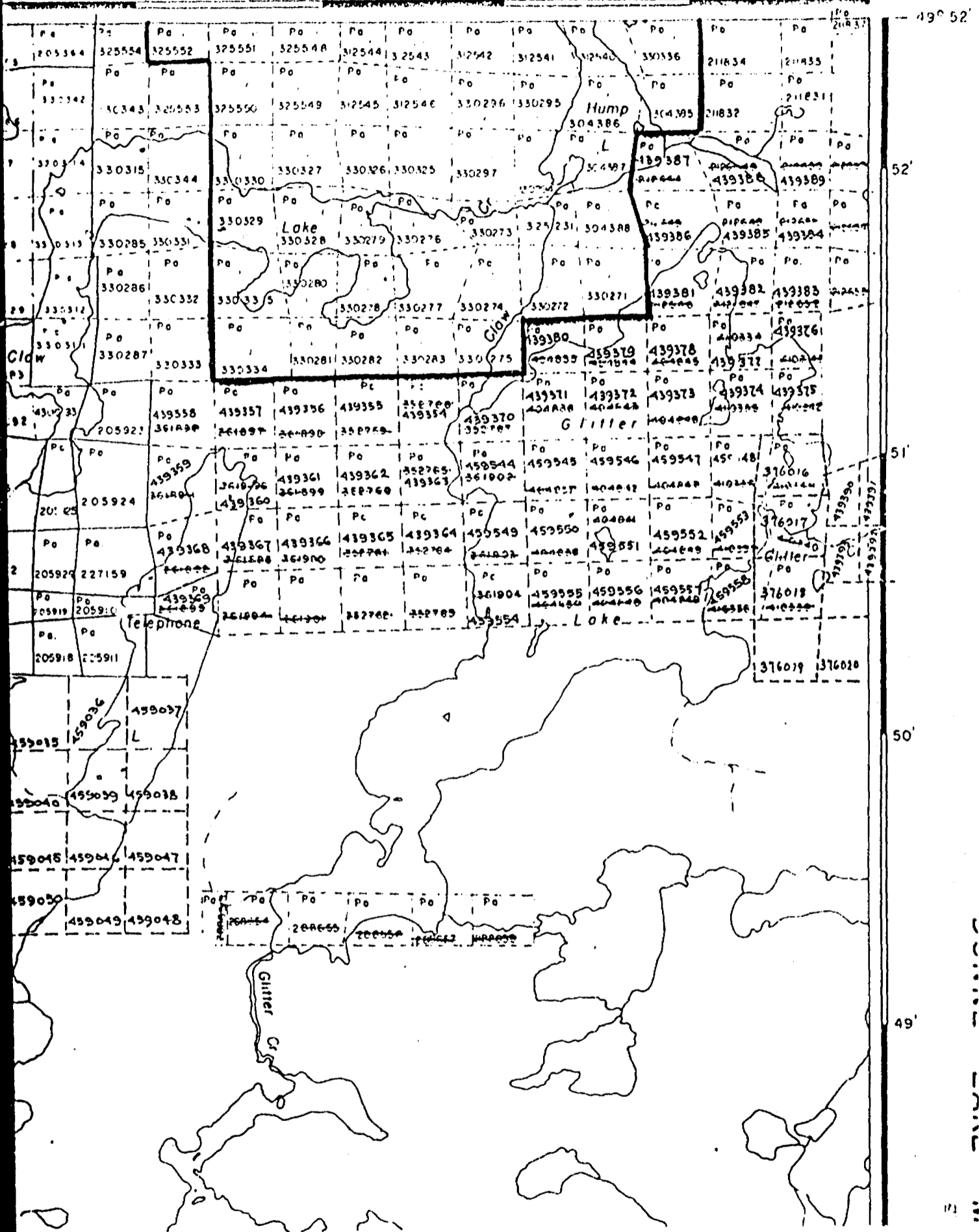
M-1888

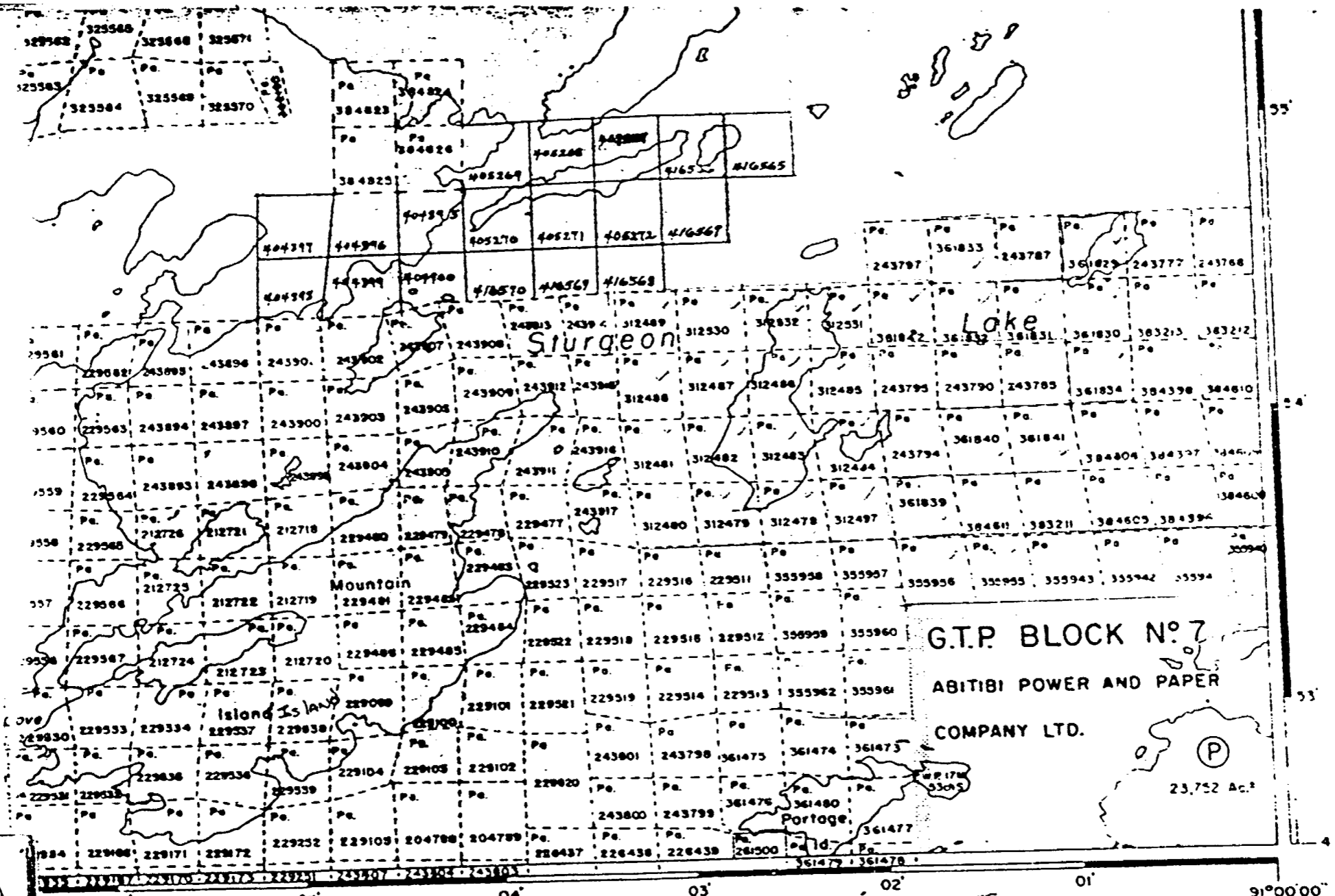
BELL & SHIKAG LAKE SHEET



Bell Lake M-1888

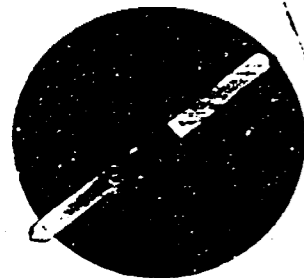
90° 45' 00"



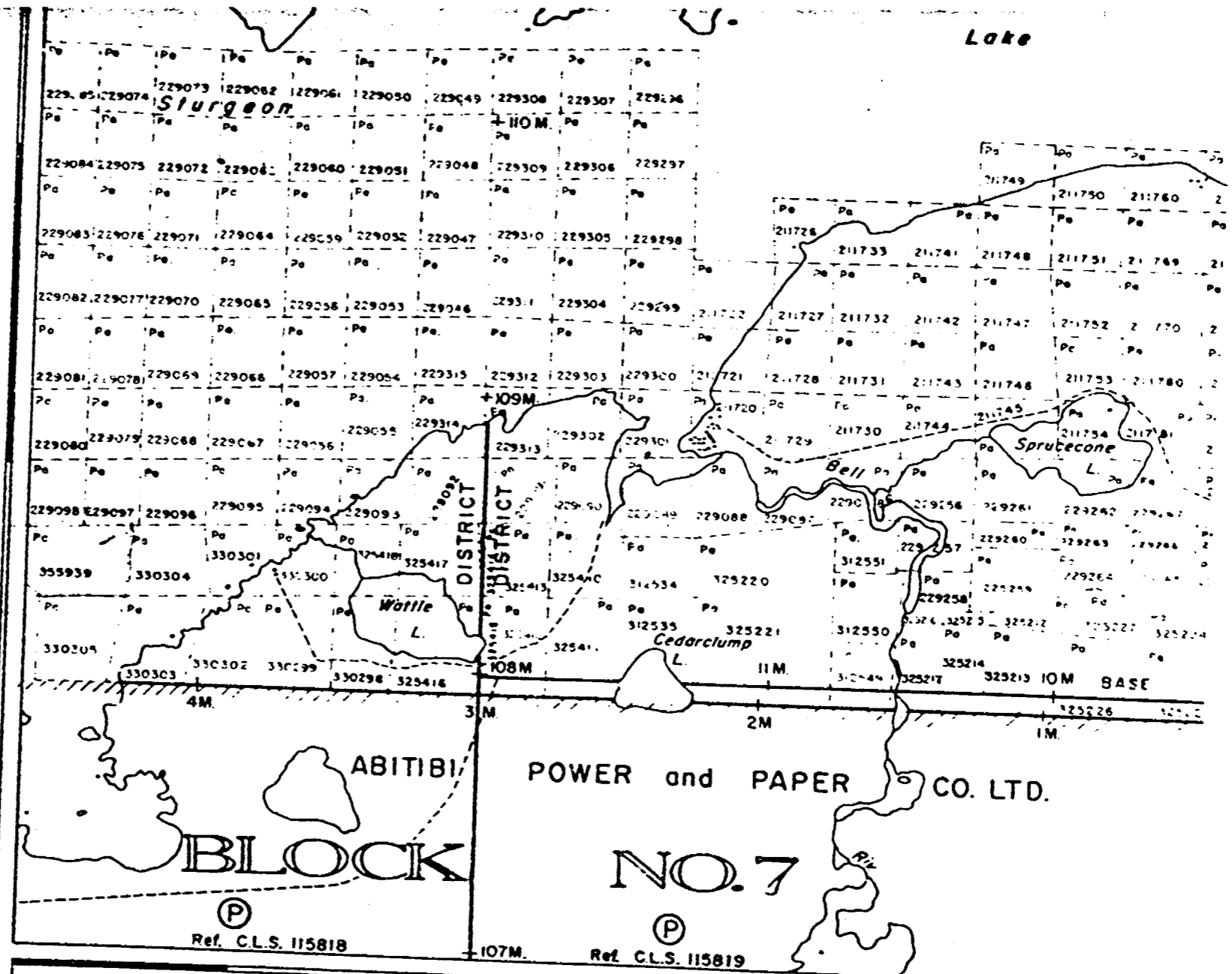


G.T.P. BLOCK No. 7
ABITIBI POWER AND PAPER
COMPANY LTD.

PENASSI LAKE
M-2257
40 chains



Lake



49°52'30"

91°00' 59' 58' 57' 56' 55'

(P)
Ref. C.L.S. 115818

(P)
Ref. C.L.S. 115819

SIXMILE LAKE
M-2877

Bob K

PENASSI LAKE
M-2257

SIX MILE LAKE M-2877
BELL LAKE M-1888



ONTARIO

THE MINING ACT REPORT OF WORK

A separate form is required for each type of work to be recorded.

Duplicate

To the Recorder of..... PATRICIA..... Mining Division

I,..... MATTAGAMI LAKE MINES..... T. 84.....
name of Recorded Holder Miner's Licence

..... Suite 1110 - 8 King St. East, Toronto.....
Post Office Address

do hereby report the performance of 7312..... days of ..Diamond Drilling.....
type of work

not before reported to be applied on the following contiguous claims

Claim No.	Days	Claim No.	Days	Claim No.	Days
.....
.....
.....
.....
.....
.....
.....
.....
.....
.....

SEE SCHEDULE "A" ATTACHED

All the work was performed on Mining Claim (s) Pa. 325220 - 325223; Pa. 312520 - 312522
(In the case of geological and/or geophysical survey (s) where more than 18 claims are involved attach a schedule)

READ CAREFULLY: THE FOLLOWING INFORMATION IS REQUIRED BY THE MINING RECORDER.

- For Manual Work, Stripping or Opening up of Mines, Sinking Shafts or Other Actual Mining Operations - Names and addresses of the men who performed the work and the dates and hours of their employment.
- For Diamond and other Core Drilling - Footage, No. and angle of holes and diameter of core. Name and address of owner or operator of drill. Dates when drilling was done. Signed core log and sketch in duplicate.
- For Compressed Air or Other Power Driven or Mechanical Equipment - Type of drill or equipment. Names and addresses of men engaged in operating equipment and the dates and hours of their employment.
- For Power Stripping - Type of equipment. Name and address of owner or operator. Amount expended. Dates on which work was done. Proof of actual cost must be submitted within 30 days of recording.
- With each of the above types of work sketches are required to show the location and extent of the work in relation to the nearest claim post. In the case of diamond or other core drilling the sketch must be submitted in duplicate.
- For Geological and Geophysical Survey - The names and addresses of men employed as well as dates. Type of instrument used in the case of geophysical survey. Reports and maps in duplicate must be filed with the Minister within 60 days of recording.
- For Land Survey - the name and address of Ontario Land surveyor.

The Required Information is as Follows: (Attach a list if this space is insufficient)

SEE SCHEDULE "B" ATTACHED

Date ...January 13, 1975.....
Signature of Recorded Holder or Agent (J.D. Harvey)

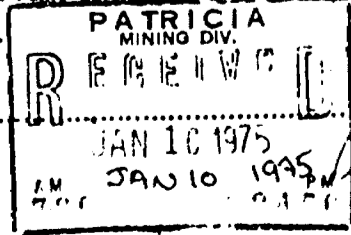
The Mining Act Certificate Verifying Report of Work

I,..... John D. HARVEY.....
..... 8 King St. East, Suite 1110, Toronto, Ont.....
(Post Office Address)

hereby certify:

- That I have a personal and intimate knowledge of the facts set forth in the report of work annexed hereto, having performed the work or witnessed same during and/or after its completion.
- That the annexed report is true.

Dated January 13 19 75



Signature (J.D. Harvey)
Pa. 304385



52G155W006 52G155W012B1 BELL LAKE

THE PENALTY FOR MAKING A FALSE STATEMENT IN THIS REPORT AND/OR CERTIFICATE IS \$500. OR SIX MONTHS IMPRISONMENT.

SCHEDULE A

Pa	Claim	Days
	312478 ✓	80
	312479 ✓	80
	312480 ✓	80
	312481 ✓	80
	312482 ✓	69
	312483 ✓	68
	312484 ✓	80
	312485 ✓	68
	312486 ✓	68
	312487 ✓	80
	312488 ✓	80
	312489 ✓	80
	312497 ✓	80
	312530 ✓	80
	312531 ✓	80
	312532 ✓	80
	355955 ✓	133
	355956 ✓	133
	355957 ✓	133
	355958 ✓	133
	355959 ✓	133
	355960 ✓	133
	355961 ✓	133
	355962 ✓	133
	355939 ✓	133
	355940 ✓	133
	355941 ✓	133
	355942 ✓	133
	355943 ✓	133
	361829 ✓	180
	361830 ✓	180
	361831 ✓	180
	361832 ✓	180
	361833 ✓	179
	361834 ✓	179
	361839 ✓	179
	361840 ✓	179
	361841 ✓	179
	361842 ✓	179
	312542 ✓	52
	312543 ✓	52

Handwritten notes:
 PENASSI LAKE (next to 312478-312489)
 SIKMILE LAKE (next to 355960-355962)
 PENASSI LAKE (next to 361829-361834)
 Bill Lake (next to 312542)
 BELL LAKE (next to 312543)

Pa	Claim	Days
	312544 ✓	52
	312545 ✓	52
	312546 ✓	52
	325548 ✓	52
	325549 ✓	52
	325550 ✓	52
	325551 ✓	52
	325552 ✓	52
	330276 ✓	53
	330277 ✓	53
	330278 ✓	53
	330279 ✓	53
	330280 ✓	53
	330281 ✓	53
	330282 ✓	53
	330283 ✓	53
	330296 ✓	53
	330297 ✓	53
	330325 ✓	53
	330326 ✓	53
	330327 ✓	53
	330328 ✓	53
	330329 ✓	53
	330330 ✓	53
	330334 ✓	53
	330335 ✓	53
	304385 ✓	52
	304386 ✓	52
	304387 ✓	52
	304388 ✓	52
	330271 ✓	52
	330272 ✓	52
	330273 ✓	52
	330274 ✓	52
	330275 ✓	53
	330294 ✓	52
	330295 ✓	53
	330336 ✓	53
	312540 ✓	52
	312541 ✓	52
	325231 ✓	52

Handwritten notes:
 Bell Lake (next to 330283)
 BELL LAKE (next to 330296-330336)
 BELL (next to 312540)

Total 7013

Handwritten:
 Pa 304385

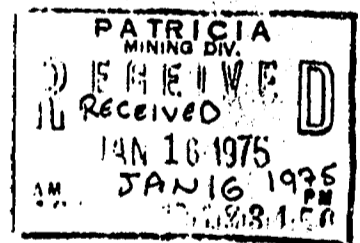
Stamp:
 PRICIA
 195

SCHEDULE B

<u>Hole No.</u>	<u>Claim</u>	<u>Footage</u>	<u>Core Diam.</u>	<u>Dates</u>
✓ SL-55-73.2	Pa 325221 <i>Sixmile</i>	585'	1 5/16"	Nov. 11 to Nov. 17/1973
✓ SL-55-73.3	Pa 325221 <i>Sixmile</i>	447'	1 5/16"	Nov. 17 to Nov. 22/1973
✓ SL-55-73.5	Pa 325220 <i>Sixmile</i>	560'	1 5/16"	Dec. 4 to Dec. 12/1973
✓ "	Pa 325221 <i>Sixmile</i>	220'	1 5/16"	Dec. 12 to Dec. 16/1973
- SL-55-74.16	Pa 325223 <i>Sixmile</i>	1087'	1 5/16"	June 21 to July 5/1974
✓ SL-55-74.17	Pa 325222 <i>Sixmile</i>	1680'	1 5/16"	July 10 to Aug. 23/1974
<i>Bell</i> SL-51-74.11	Pa 312520	519'	1 5/16"	Jan. 16 to Jan. 23/1974
<i>Bell</i> SL-51-74.12	Pa 312520	497'	1 5/16"	Jan. 24 to Jan. 29/1974
<i>Bell</i> SL-51-74.13	Pa 312522 <i>Sixmile</i>	52'	1 5/16"	Feb. 1, 1974 to
<i>Bell</i> "	Pa 312521 <i>Sixmile</i>	163'	1 5/16"	
<i>Bell</i> "	Pa 312520	384'	1 5/16"	
✓ SL-51-74.14	<i>Bell</i> Pa 312521	1018'	1 5/16"	Feb. 6 to Feb. 18/1974
		7312'		

Diamond Drilling by Morissette Diamond Drilling,
Haileybury, Ontario.

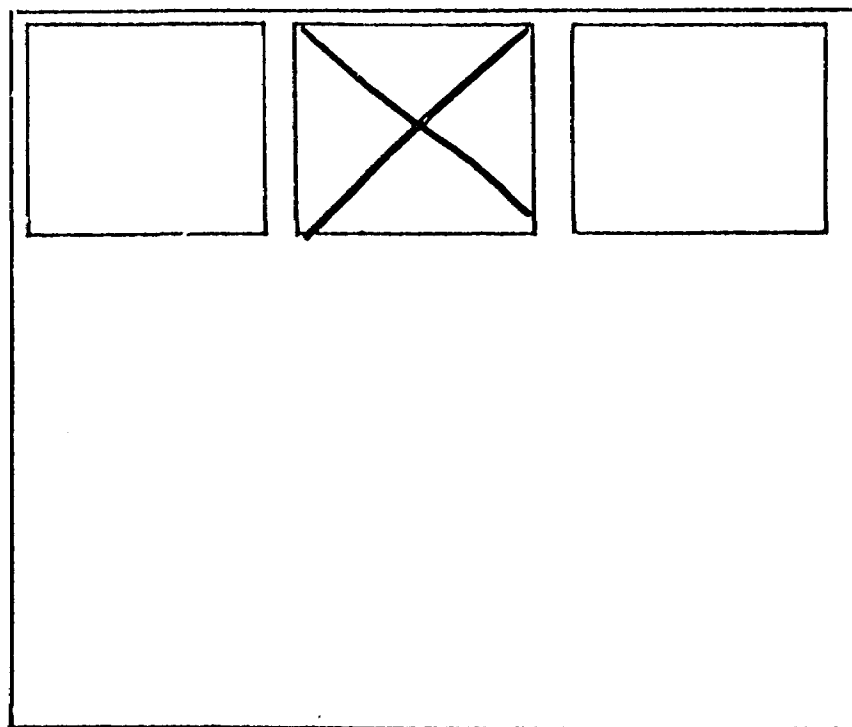
Pa 304 385
Pa-304 385

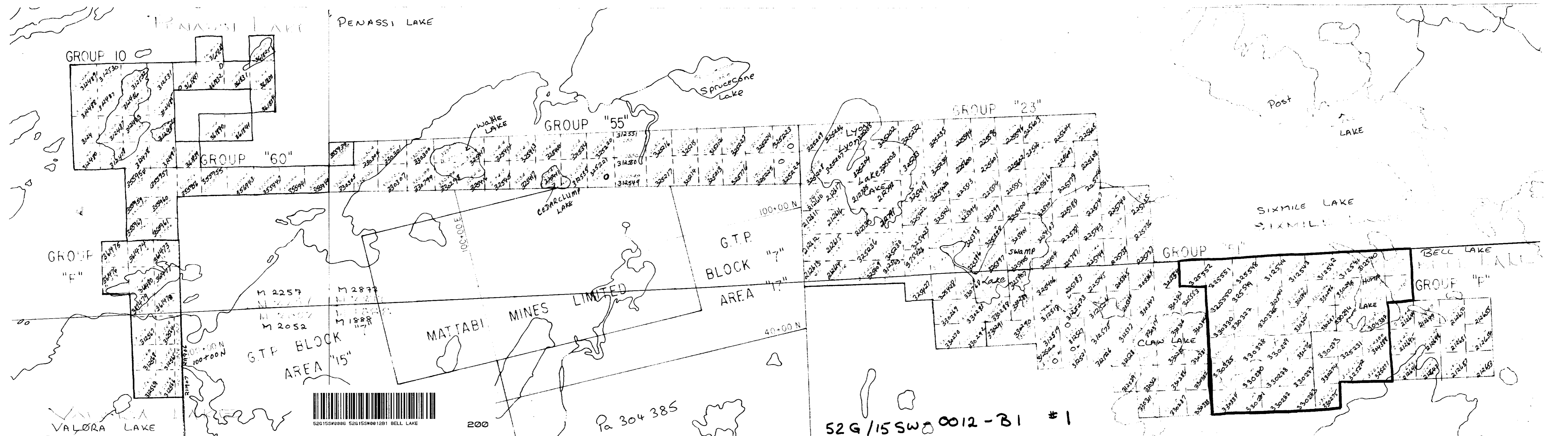


SEE ACCOMPANYING
MAP(S) IDENTIFIED AS

52G/ISSW-0012-B1 # 1

LOCATED IN THE MAP
CHANNEL IN THE FOLLOWING
SEQUENCE (x)





GROUP 10

PENASSI LAKE

GROUP "55"

GROUP "23"

GROUP "60"

GROUP "F"

G.T.P. BLOCK "7" AREA "17"

G.T.P. BLOCK AREA "15"

MATTABI MINES LIMITED

GROUP "F"

GROUP "F"



200

Pa 304 385

52G/15SW 0012-B1 #1