



52G15SW0010 52G15SW0012A1 BELL LAKE

010

### Diamond Drilling

Area of Bell Lake

Report NO 16

Work performed by: G.G. Plaskett

Claim NO	Hole NO	Footage	Date	Note
PA 225681	SM-1	561'	Feb/71	(1)
	SM-3	301'	Feb/71	(1)
PA 225682	SM-2	447'	Feb/71	(1)
PA 225673	SM-4A	605'		(1)
<u>TOTAL</u>	<u>4 DH</u>	<u>1914 FT</u>		

#### Notes:

(1) 240/71

6201s  
 No. 1 Post  
 290' W OF 225681

PROPERTY - SANTA MARIA MINES LIMITED.  
 CLAW LAKE - STURGEON AREA

SM. 1  
 HOLE NO. 5111

LOCATION: \_\_\_\_\_  
 LATITUDE: L 109E - 1300N  
 DEPARTURE: \_\_\_\_\_  
 ELEVATION: LAKE \_\_\_\_\_

STRIKE: N 20° E  
 DIP: \_\_\_\_\_  
 DATE DRILLED: 16-20 Feb/71

PAGE NO. 1  
 COLLAR -- 17'  
 72' -- 100'  
 300' -- 100'  
 400' -- 100'

PURPOSE: To test conductor in lake

FOOTAGE	DESCRIPTION	SAMPLE NO.	WIDTH	AL. VA.
0-10	WATER			
10-41	SOFT MUSKEG			
41-57	LOOSE SANDY SOIL - few pebbles			
57-93	- INTERMEDIATE - BASIC TUFF - dark INDISTINCT Banding - ALTERNATING LIGHT TO GREY COLOUR f.g. - ALTERED - IN PART MICACEOUS SCHIST garnetiferous			
93-117	BASIC TUFF - BLACK. f.g. - ALTERED TO MICASCHIST INDISTINCT BANDING 60-70°/core. Slightly garnetiferous - cut by irregular grey carbonate stringers. contains a few large fragments			
117-275	- ACID to INTERMEDIATE TUFF with some AGGLOMERATE - ALTERED - grey to light grey some fractured with cream coloured ALTERATION banded 45-60°/core - few garnets developed exhibits small black irregular spotting at 163 - contact between ACID TUFF & BASIC TUFF or volcanic intrusive at 10°/core - no other contact observed. 252 - narrow chert bands - white to grey 2" wide - 55°/core			
275-278	MICA SCHIST - BLACK - BASIC. f.g.			
278-285	ACID to INTERMEDIATE TUFF - altered - silicified - carbonate alteration - creamy brown - indistinct banding /60°/ core			
285-375	- ACID to INTERMEDIATE as 117-275 some garnet developed includes acid agglomerate - indistinct fragments 345-355 - fracturing - silicification - carbonatization - creamy brown occasional quartz stringer with minor amount of pyrrhotite			
375-405	MICA SCHIST - dark grey - massive - CHLORITIC - includes narrow sections of dark interbedded tuff. small amount fine chalcopryite in schist over 6" @ 380'.			
405-437	ACID TUFF & AGGLOMERATE with narrow interbeds of basic - fragments both distinct & indistinct. ACID rocks often exhibit small flecks of pyrite - pyrrholite & chalcopryite in small amount			
437-443	BASIC TUFF - f.g. schistose - light flecks with acid TUFF bands at 60-70°/core			
443-561	ACID AGGLOMERATE - light to dark grey - generally hard - indistinct fragments some interbedded intermediate to BASIC TUFF - sharp contacts 60 to 70° to core 455-460 - fractured - altered - silicified - carbonatized - creamy brown around 480 becoming garnetiferous 500-510 - same as 455-460 with some quartz filled fracture 532-3 - 1' white quartz - 550 - banding at 40°/core 540-561 - fine fracturing with narrow band of creamy alteration along fracturing fracturing 30-45°/core			
561	end of HOLE			

RECEIVED  
 JUN 17 1971  
 PATRICIA  
 MINING DIV.  
 789-10-11-10-10-24-56 PM

*[Handwritten Signature]*

DRILLED BY \_\_\_\_\_

SIGNED \_\_\_\_\_

725 feet NORTH of No. 2 Post claim 225682 725 feet North of No. 2 Post claim 225682  
 175 feet east of PROPERTY Santa Maria Mine Claw Lake 175 feet east  
 Sturgeon Area HOLE NO. SM 2 S12

LOCATION: \_\_\_\_\_  
 LATITUDE: L 122 E  
 DEPARTURE: 4 + 25 N  
 ELEVATION: Lake - Ice

STRIKE: N 20° E  
 DIP: \_\_\_\_\_  
 DATE DRILLED: 21 - 24 Feb / 71

PAGE NO. \_\_\_\_\_

Collar - 45°  
 250 - 34°

PURPOSE: To test Geophysical Conductor in Lake.

FOOTAGE	DESCRIPTION	SAMPLE NO.	WIDTH	RAY VALUE
0-63	Casing			
63-100	INTERMEDIATE to BASIC TUFF. Thin - well bedded @ 60° core - white to grey to black with interbedded and layers slightly garnetiferous - Basic layers - SCHISTOSE			
100-167	INTERMEDIATE AGGLOMERATE - grey fragments in dark matrix - 60°/core			
167-180	BASIC TUFF - Altered to Micaschist - well bedded - f.g. 172 - 180 may be basic intrusive			
180-200	INTERMEDIATE AGGLOMERATE - darker than 100-167 less ACIDIC - few acid fragments well banded - 60 - 65°/core few garnets			
200-447	BASIC tuff ( MICA SCHIST) and agglomerate - dark - well banded @ 60-65°/core grade from black SCHIST to grey agglomerate (grey fragments in dark matrix) 203 - 210 - fracturing + silicification 338 - 340 - fracturing + silicification 313 - 1' fault + continuous cave adjoining core not broken 424 - 430 cut by irregular $Qt_2$ VEINS core angling changing to 75 - 80°/core occasional speck pyrrhotite in calcite filled vesicles - notably at 436 end of Hole.			

PATRICIA  
 MINING DIV.  
**RECEIVED**  
 JUN 17 1971  
 AM 7 8 9 10 11 12 1 2 3 4 5 6 PM

DRILLED BY \_\_\_\_\_

SIGNED \_\_\_\_\_

HOLE NO. 71 POST  
315' W 225681

740's 8 #1  
315' W 225681

PROPERTY SANTA MARIA MINES LIMITED  
CLAW LAKE STURGEON AREA

SM3

HOLE NO. 71

LOCATION: \_\_\_\_\_

LATITUDE: L 108 E

STRIKE: N 20° E

PAGE NO. 1

DEPARTURE: 1150 N

DIP: \_\_\_\_\_

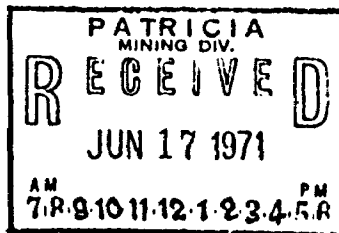
Collar - 50°

ELEVATION: LAKE - ICE

DATE DRILLED: 26 Feb 71

PURPOSE: To test L.P. Conductor.

FOOTAGE	DESCRIPTION	SAMPLE NO.	WIDTH	AREA VALU
0-61	CASING No thick muskeg layer			
61-80	HEAVY BOULDER HORIZON - not seen in #1 BASIC TUFF & AGGLOMERATE dark with sections showing grey fragments banding 70°/core			
80-95	BASIC TUFF - fractured - QUARTZ veins & stringers some silicification and alteration at 80-82 thin bedded - dark - 45-50°/core			
95-207	INTERMEDIATE & AGGLOMERATE - garnetiferous - massive - dark grey occasional narrow band ACID AGGLOMERATE - bedding indistinct. 193 - 2" soft light grey bed - 65°/core			
207-232	BASIC TUFF - well banded - 65°/core grey to black colour few creamy grey soft layers - slightly garnetiferous			
232-285	INTERMEDIATE AGGLOMERATE - MASSIVE light to dark grey garnetiferous 250-260 - fine fracturing 10-30°/core with creamy silicification for 1/8" along fracture			
285-301	Gradual change to INTERMEDIATE TUFF dark to medium grey - black spots END OF HOLE			



DRILLED BY \_\_\_\_\_

SIGNED *[Signature]*

800 feet south of #4 Post claim 225673  
300 feet east

300 feet south of #4 Post claim  
300 feet east 225673

PROPERTY: SANTA MARIA MINES LTD  
CLAW LAKE - STURGEON AREA

SM 41

HOLE NO. 11

LOCATION: \_\_\_\_\_  
LATITUDE: 18100N  
DEPARTURE: L 88 E  
ELEVATION: \_\_\_\_\_

STRIKE: N 25° E  
DIP: \_\_\_\_\_  
DATE DRILLED: \_\_\_\_\_

LOG NO. 1  
Collar - 30'  
200' - 40'  
400' - 44'

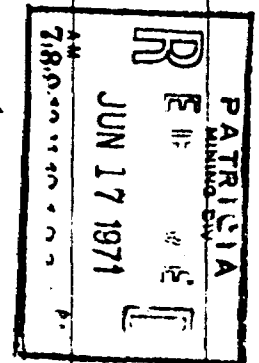
PURPOSE: \_\_\_\_\_

FOOTAGE	DESCRIPTION	SAMPLE NO.	WIDTH	AC VA
0-90	CASING			
90-206	RHYOLITE - fractured - welded agglomerate - variable shades of grey & black - garnets developed in dark matrix - contains BASIC dikes or flows at 111'-115'; 120'-121.5'; small amount of sphalerite - red to brown - very fine - sooty on seams & fractures - occasion spot 186' - 3" quartz vein - 20°/core - 5% Pyrrhotite and chalcopyrite			
206-216	MIXTURE BASIC DIKES & ACID AGGLOMERATE - cut by quartz veins. 210'-211' pyrrhotite - chalcopyrite - pyrite in BLEBS ± 3%			
216-253	ACID AGGLOMERATE - distinct grey pigments in darker matrix. - matrix garnetiferous			
253-255	BASIC DIKE			
255-278	RHYOLITE - welded agglomerate - variable shades of grey - scattered garnets 259-260 - pyrrhotite - chalcopyrite - pyrite ± 5%			
278-306	MIXTURE - ACID AGGLOMERATE & BASIC TUFT 60°/core - garnetiferous			
306-324	RHYOLITE - fractured - welded agglomerate			
324-518	ACID AGGLOMERATE - with narrow 4"-8" BASIC sections - usually garnetiferous and often magnetic - some siliceous bands - contorted - 30°/core - bedding generally 60°-70°/core 392'-400' - fracturing & creamy salicification 407'-408' - 5% pyrite in acid agglomerate 403'-409' - BASIC DIKE 362 - fault reported by drillers 424'-438' - thin bedded - grey 70°/core 442'-443' - BASIC DIKE - dark green 452'454' - BASIC DIKE - dark green 470 - Bedding 55°/core 450'-451' - 3% pyrite 475'-490' - light grey - very siliceous - chloritic 508' - 1" quartz vein - blebs coar. yrite 500'-525' - several narrow basic dikes or basic flows			
518-531	BASIC DIKE - dark green - massive - few acidic inclusions			
531-605	ACID AGGLOMERATE - various shades of grey - light to dark - f.g. rhyolitic - few garnets - cut by narrow quartz veins - last 20 ft. grey to cream coloured 580' - crumpling of black acidic rocks bedding parallel to core			

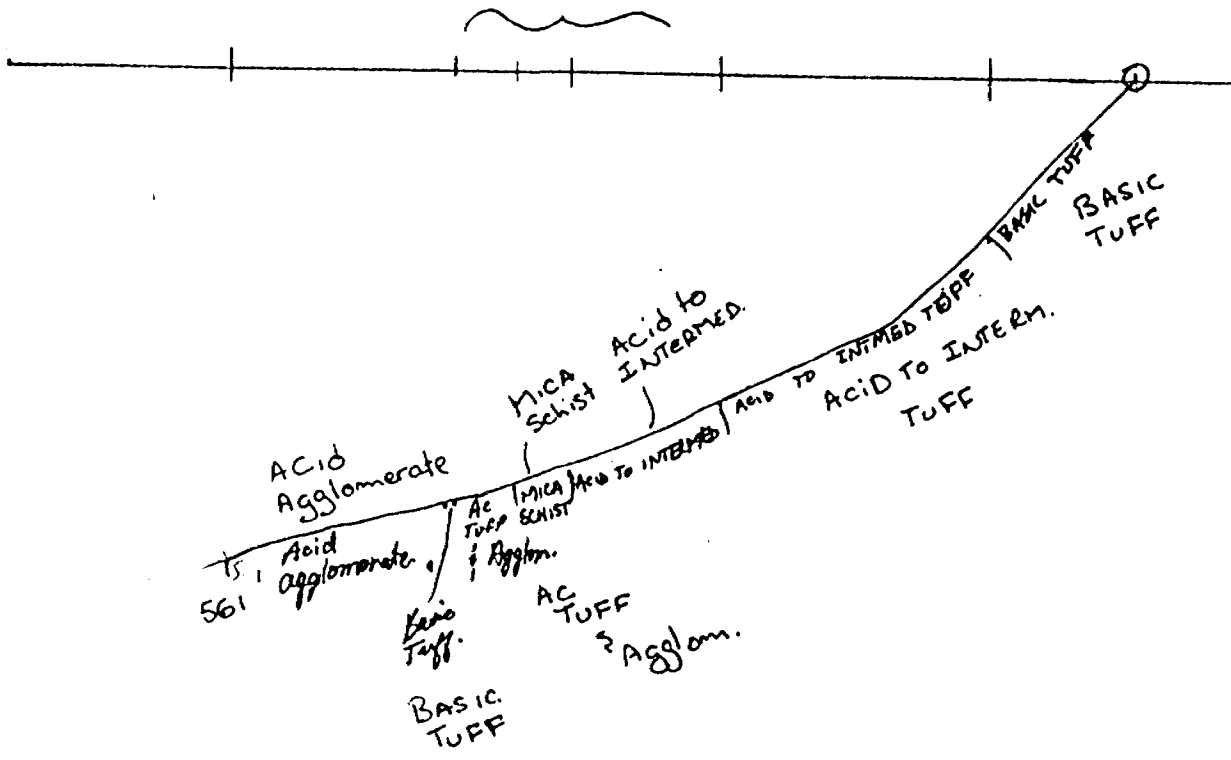
605 END OF HOLE

DRILLED BY \_\_\_\_\_

SIGNED \_\_\_\_\_

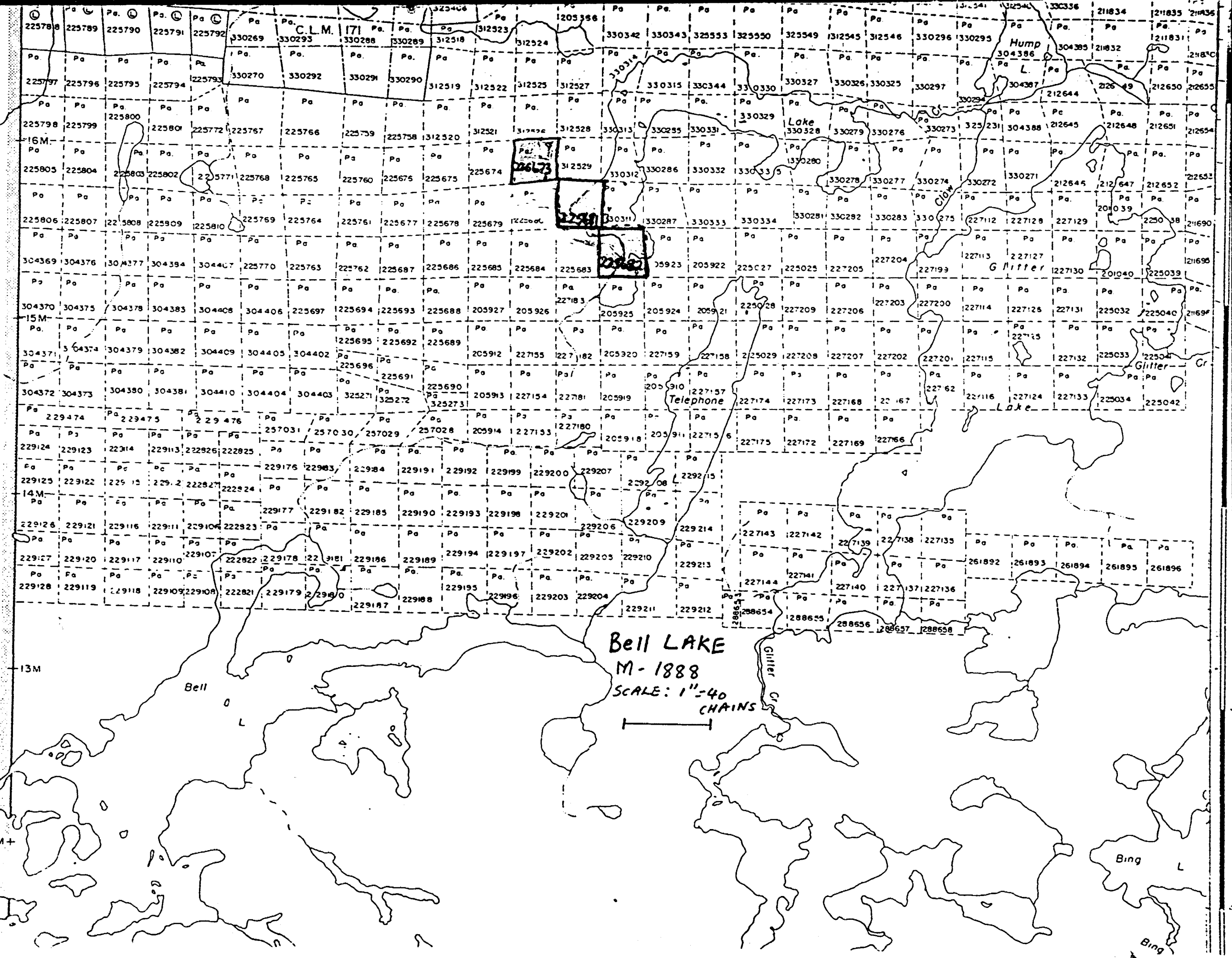


*[Handwritten signature]*



AND PAPER CO. LTD.

(P)  
4,560 AC.



Bell LAKE  
M-1888  
SCALE: 1"=40  
CHAINS

Lake

Bing L

Bing

225796	225795	225794	225793	225750	225751	225752	225753	225699	225702	225705	225709	205357	205355	205350	205349	221166	221165	221158	221157																		
225799	225798	225797	225796	225754	225755	225756	225757	225700	225701	225706	225708	205358	205354	205351	205348	221167	221164	221159	221154																		
225804	225803	225802	225801	225758	225759	225760	225761	225676	225677	225674	225673	225707	205359	205353	205352	205347	205344	221163	221160	221153																	
225807	225806	225805	225804	225762	225763	225764	225765	225678	225679	225675	225672	225709	205360	205355	205354	205349	205346	205345	221162	221161	221152																
225730	225729	225728	225727	225715	225716	225717	225718	225682	225683	225680	225679	225681	205361	205356	205355	205350	205347	205346	221162	221161	221152																
225729	225728	225727	225726	225719	225720	225721	225722	225684	225685	225682	225681	205927	205926	227103	205925	205924	205921	227106	227105	227100	227114																
225728	225727	225726	225725	225717	225718	225719	225720	225686	225687	225684	225683	205942	227159	227158	205940	227159	227158	227102	227101	227115																	
225727	225726	225725	225724	225716	225717	225718	225719	225688	225689	225686	225685	205913	227158	227157	205911	227157	227156	227103	227102	227116																	
229123	229122	229121	229120	229113	229114	229115	229116	229103	229104	229101	229100	229192	229191	229188	229187	229184	229183	229180	229179	229176	229175	229172	229169	229168	229165	229163	229161	229159	229157	229156	229154	229153	229152	229151	229150		
229122	229121	229120	229119	229112	229113	229114	229115	229105	229106	229103	229102	229193	229192	229189	229188	229185	229184	229181	229180	229177	229176	229173	229172	229169	229168	229165	229163	229161	229159	229157	229156	229154	229153	229152	229151	229150	
229121	229120	229119	229118	229111	229112	229113	229114	229107	229108	229105	229104	229194	229193	229190	229189	229186	229185	229182	229181	229178	229177	229174	229173	229170	229169	229166	229164	229162	229160	229158	229156	229155	229153	229152	229151	229150	
229120	229119	229118	229117	229110	229111	229112	229113	229109	229110	229107	229106	229195	229194	229191	229190	229187	229186	229183	229182	229179	229178	229175	229174	229171	229170	229167	229165	229163	229161	229159	229157	229155	229154	229152	229151	229150	
229119	229118	229117	229116	229109	229110	229111	229112	229111	229112	229109	229108	229196	229195	229192	229191	229188	229187	229184	229183	229180	229179	229178	229175	229174	229171	229170	229167	229165	229163	229161	229159	229157	229155	229154	229152	229151	229150

BELL + SHISHAG LAKES AREA

BELL + SHISHAG LAKES AREA  
M-1222  
888





52G15SW0010 52G15SW0012A1 BELL LAKE

900



ONTARIO

BELL & SHISHAG LAKES  
M-1888

A separate form is required for each type of work to be recorded.

#240

THE MINING ACT REPORT OF WORK

To the Recorder of PATRICK MINING Division Mining Division

I, G. G. PLASKETT A 22178  
name of Recorded Holder Miner's Licence

1501 - 330 Bay St. Toronto TORONTO  
Post Office Address

do hereby report the performance of 1914 days of DIAMOND DRILLING  
type of work

not before reported to be applied on the following contiguous claims

Claim No.	Days	Claim No.	Days	Claim No.	Days
225673	127	225679	127	225684	127
674	127	680	127	685	127
675	127	681	127	686	127
676	127	682	127	687	127
677	127	683	127		
678	127				

All the work was performed on Mining Claim (s) 225681 (862 Feet); 225682 (447 FT); 225673 (605 FT)  
(In the case of geological and/or geophysical survey (s) where more than 18 claims are involved attach a schedule)

READ CAREFULLY: THE FOLLOWING INFORMATION IS REQUIRED BY THE MINING RECORDER.

- For Manual Work, Stripping or Opening up of Mines, Sinking Shafts or Other Actual Mining Operations - Names and addresses of the men who performed the work and the dates and hours of their employment.
- For Diamond and other Core Drilling - Footage, No. and angle of holes and diameter of core. Name and address of owner or operator of drill. Dates when drilling was done. Signed core log and sketch in duplicate.
- For Compressed Air or Other Power Driven or Mechanical Equipment
- Type of drill or equipment. Names and addresses of men engaged in operating equipment and the dates and hours of their employment.
- For Power Stripping - Type of equipment. Name and address of owner or operator. Amount expended. Dates on which work was done. Proof of actual cost must be submitted within 30 days of recording.
- With each of the above types of work sketches are required to show the location and extent of the work in relation to the nearest claim post. In the case of diamond or other core drilling the sketch must be submitted in duplicate.
- For Geological and Geophysical Survey - The names and addresses of men employed as well as dates. Type of instrument used in the case of geophysical survey. Reports and maps in duplicate must be filed with the Minister within 60 days of recording.
- For Land Survey - the name and address of Ontario Land surveyor.

The Required Information is as Follows: (Attach a list if this space is insufficient)

No. of Holes Drilled - Four  
 DATES - 16 Feb - 13 MAR 71  
 CORE SIZE - AXT  
 LOCATION - ON SHORE CLAW LAKE.  
 CENTRE OF CLAIM - 225681  
 Contractor - BARON DIAMOND DRILLING  
HAILEY BURY ONTARIO  
 2 COPIES DRILL LOGS ATTACHED  
 2 COPIES LOCATION MAP ATTACHED  
 Date 11 JUNE 71

DISTRIBUTION OF WORK  
 DISTRIBUTION OF WORK  
 CLAIM 225681 - 862 DAYS  
 225682 - 447 DAYS  
 225673 - 605 DAYS  
 TOTAL 1914 DAYS  
 1905 1905  
 Signature of Recorded Holder or Agent

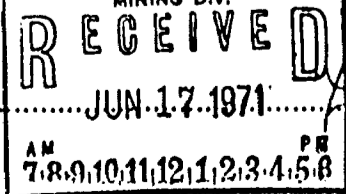
The Mining Act Certificate Verifying Report of Work

I, L. J. CUNNINGHAM  
1 MCPHEE AVE KIRKLAND LAKE ONTARIO  
(Post Office Address)

hereby certify:

- That I have a personal and intimate knowledge of the facts set forth in the report of work annexed hereto, having performed the work or witnessed same during its completion.
- That the annexed report is true.

Dated 11 JUNE 1971



Signature

(P)

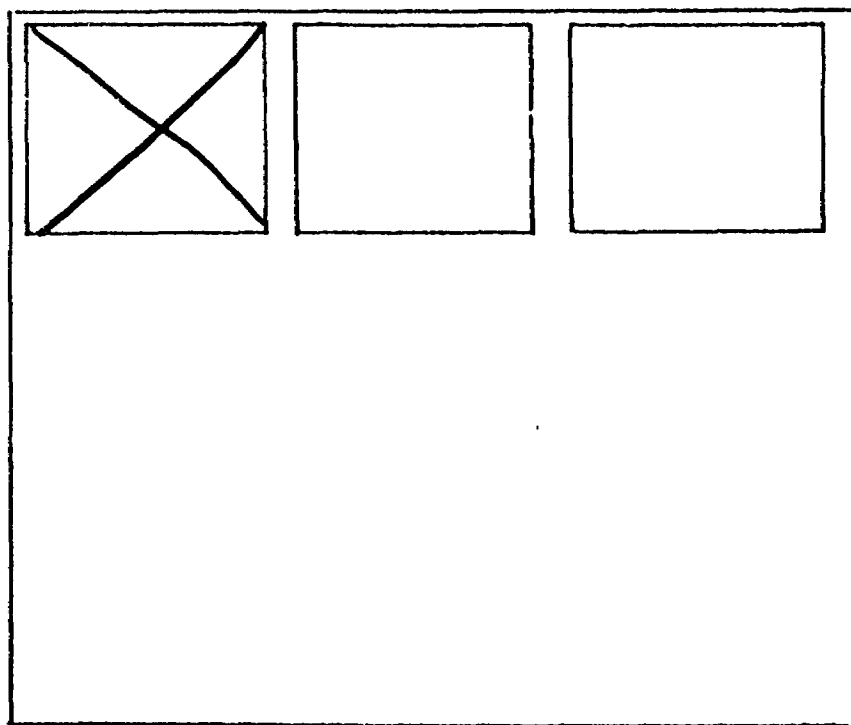
Pa. 430679  
~~225673~~

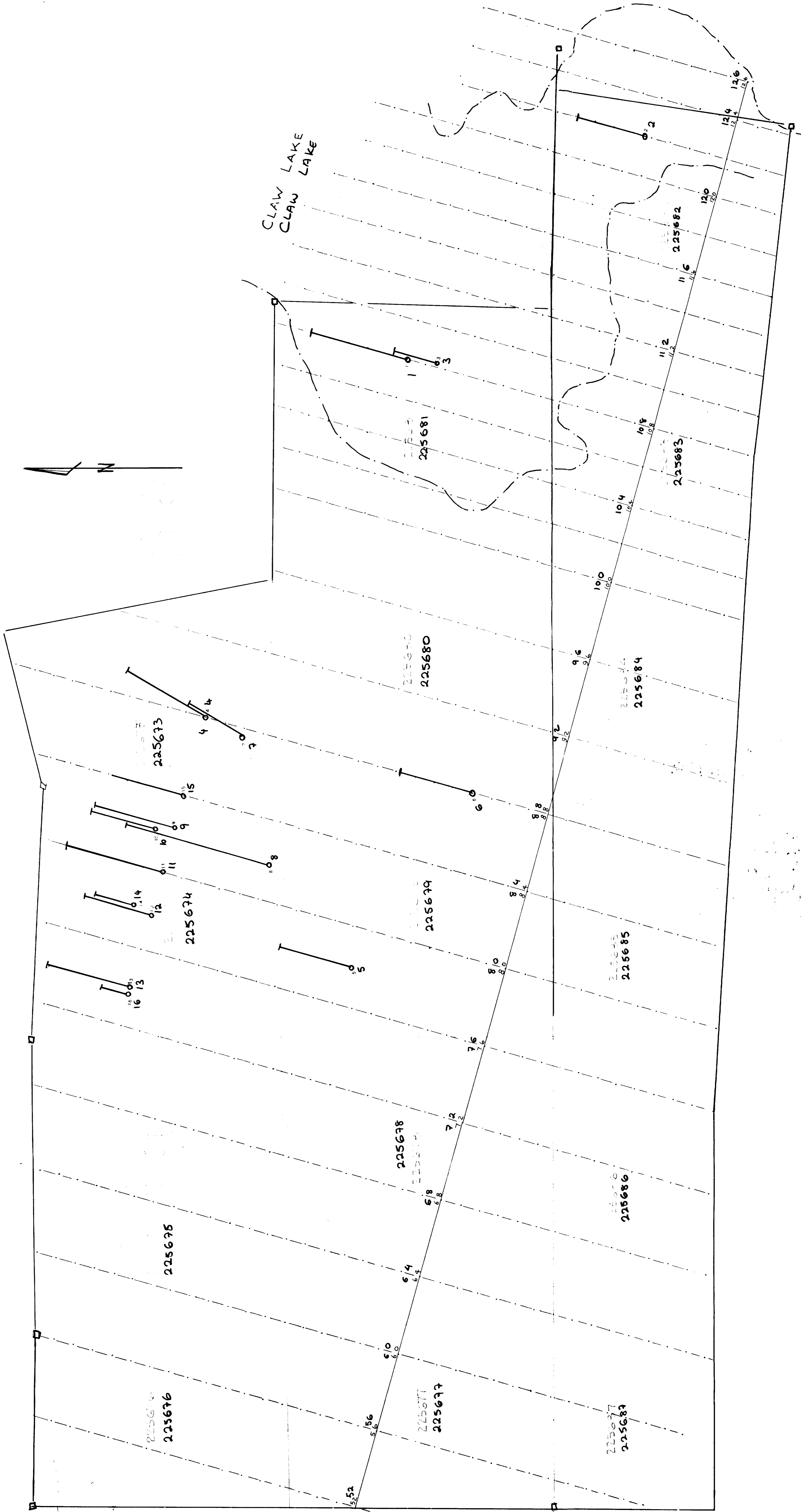
THE PENALTY FOR MAKING A FALSE STATEMENT IN THIS REPORT AND/OR CERTIFICATE IS \$500. OR SIX MONTHS IMPRISONMENT OR BOTH

SEE ACCOMPANYING  
MAP(S) IDENTIFIED AS

52G/15 SW -0012-A# 1

LOCATED IN THE MAP  
CHANNEL IN THE FOLLOWING  
SEQUENCE (x)





★ 52G/15SW-0012-A1 #1

SANTA MARIA MINES LTD.  
STURGEON LAKE AREA

SANTA MARIA MINES LTD.  
STURGEON LAKE AREA  
ONTARIO

SCALE 1" = 200' 1:200

*[Handwritten signature]*  
11/18/87

