

DIAMOND DRILL CORE LOGGING SHEETS

NORTH AMERICAN PALLADIUM LTD

LAC DES ILES MINES LTD.

PROPERTY: Lac des Iles	CLAIM NO.: 253	DOWNHOLE SURVEY METHOD: Maxibor			REMARKS:	
HOLE NO.: 01-079	LENGTH (m): 621.0	CORE SIZE: NQ	DOWNHOLE SURVEY BY: Mark Anness			
LOCATION: Mine Grid	NORTHING: 31546.383	EASTING: 31610.971	COLLAR SURVEY BY: Mark Anness			
SECTION: 489N	ZONE: Roby	ELEVATION (m): 498.723	DRILLING COMPANY: Chibougamau			
COLLAR ORIENTATION (AZIMUTH/DIP):	PLANNED: 71 / -50	SURVEYED: 66.986 / -52.262	DATE LOGGED: Oct. 24, 2001 TO Oct. 30, 2001			
HOLE STARTED: October 16, 2001	HOLE FINISHED: October 24, 2001	MAG: 2.1° w	LOGGED BY: Brian Nelson & Gerry Katchen			

Paul Nelson

Page 1 of 21

METERAGE		DESCRIPTION	ROCK CODE	Alt'n		Bx Matrix		SAMPLES					ASSAYS					
FROM	TO			Plag	Pxr	Comp	Prop'n	No.	FROM	TO	LENGTH	%S	Cpy:Po	Pd (g/t)	Pt (g/t)	Au (g/t)	Cu (%)	Ni (%)
0.00	4.00	OVERBURDEN																
		COLOUR: NIL																
		GRAIN SIZE: NIL																
		PLAG (%): NIL																
		CPX (%): NIL																
		OPX (%): NIL																
		OTHER MIN. (%) NIL																
4.00	31.60	VARITEXTURED GABBRONORITE	VTGab	2	2			001	4.00	6.00	2.00		0.230	0.049	0.039	0.027	0.032	0.004
		COLOUR: GREEN-GREY	VTGab	2	2			002	6.00	9.00	3.00		0.105	0.025	0.033	0.020	0.025	0.004
		GRAIN SIZE: FINE-MEDIUM-COARSE	VTGab	2	2			003	9.00	11.30	2.30		0.026	0.030	0.012	0.004	0.026	0.004
			VTGab	2	2			004	11.30	13.25	1.95		0.003	0.001	0.018	0.015	0.003	0.004
		PLAG (%): 35-50	VTGab	2	2			005	13.25	15.00	1.75	tr	0.085	0.025	0.018	0.009	0.028	0.004
		CPX (%): 25-40	VTGab	2	3			006	15.00	18.00	3.00		0.125	0.029	0.014	0.008	0.027	0.004
		OPX (%): >10-30	VTGab	2	2			007	18.00	21.00	3.00		0.081	0.028	0.015	0.004	0.027	0.004
		OTHER MIN. (%) N/A	VTGab	2	2			008	21.00	24.00	3.00		0.069	0.017	0.033	0.008	0.027	0.004
			VTGab	2	2			009	24.00	27.00	3.00		0.081	0.024	0.046	0.024	0.037	0.004
			VTGab	2	2			010	27.00	30.00	3.00		0.090	0.025	0.038	0.017	0.036	0.004
			VTGab	2	2			011	30.00	31.60	1.60		0.017	0.010	0.029	0.012	0.030	0.004
		Finer, medium grained to medium grained to coarse grained to locally pegmatitic, green-grey, hard and not magnetic, intensity of grain size varied (varies in texture) gradually decreased down-hole through unit, contacts between textured variations are predominantly gradational to locally sharp, locally section cut by late mafic dikes and diorite dikes.																
		-predominantly moderate alteration of chalcopyrite to actinolite																



52H04NE2014 2.24442 LAC DES ILES

010

2 040 41

DIAMOND DRILL CORE LOGGING SHEETS

NORTH AMERICAN PALLADIUM LTD

LAC DES ILES MINES LTD.

LOGGED BY: Brian Nelson & Gerry Katchen

SIGNATURE:

PROPERTY: Lac des Iles

ZONE: Roby

HOLE NO.: 01-079

Page 8 of 21

METERAGE		DESCRIPTION	ROCK CODE	Alt'n		Bx Matrix		SAMPLES					ASSAYS						
FROM	TO			Plag	Pxr	Comp	Prop'n	No.	FROM	TO	LENGTH	%S	Cpy:Po	Pd (g/t)	Pt (g/t)	Au (g/t)	Cu (%)	Ni (%)	Co (%)
				<p>From 204.75m to 207.35m: Very strong shear zone ~3 - 5° to core axis (almost parallel) -minor serpentine, minor calcite -undulating</p> <p>From 222.35m to 223.20m: Shear Zone -~40° to core axis -minor plag veins -strong calcite</p>															
231.85	249.35	<p>GABBRONORITE BRECCIA</p> <p>COLOUR: GREYISH-GREEN</p> <p>GRAIN SIZE: MEDIUM TO COARSE GRAINED</p> <p>PLAG (%): 40-50 (matrix - gabbronorite)</p> <p>CPX (%): 25-40</p> <p>OPX (%): 10-25</p> <p>OTHER MIN. (%) N/A</p> <p>-massive, non-magnetic -moderately fractured at various angles to core axis -units matrix is of a gabbronorite, medium grained with fragments of varitextured gabbronorite, varitextured gabbro and melanogabbbronorite -alteration is moderate-strong (strongest in matrix) with Plag altered to a dark cloudy grey, purplish mauve colour, Cpx is altered to actinolite with minor talc alteration. Opx is altered to a greenish black amphibole identified mainly by its rough pitted texture, local rare areas observed with tremolite/anthophyllite -nil to 0.25% chalcopyrite:pyrrhotite (1:2 ratio), nil to trace pyrite.</p>	Gabnor Bxx	2	3	Gab		084	231.85	234.00	2.15	tr		0.570	0.037	0.060	0.089	0.070	0.005
			Gabnor Bx	2	3	Gab	5	085	234.00	237.00	3.00	0.25		0.350	0.032	0.031	0.047	0.064	0.005
			Gabnor Bx	3	3	Gab	15	086	237.00	240.00	3.00	0.25	1:2	0.340	0.038	0.034	0.034	0.057	0.005
			Gabnor Bx	3	3	Gab	50	087	240.00	243.00	3.00			0.070	0.018	0.019	0.024	0.047	0.006
			Gabnor Bx	3	3	Gab	65	088	243.00	246.00	3.00	0.25	1:2	0.220	0.069	0.029	0.025	0.049	0.006
			Gabnor Bx	3	3	Gab	100	089	246.00	247.50	1.50	tr		0.063	0.015	0.010	0.012	0.052	0.006
			Gabnor Bx	3	3	Gab	90	090	247.50	249.35	1.85	tr		0.013	0.005	0.009	0.017	0.059	0.007

DIAMOND DRILL CORE LOGGING SHEETS

NORTH AMERICAN PALLADIUM LTD

LAC DES ILES MINES LTD.

LOGGED BY: Brian Nelson & Gerry Katchen

SIGNATURE:

PROPERTY: Lac des Iles

ZONE: Roby

HOLE NO.: 01-079

Page 11 of 21

METERAGE		DESCRIPTION	ROCK CODE	Alt'n		Bx Matrix		SAMPLES					ASSAYS					
FROM	TO			Plag	Pxr	Comp	Prop'n	No.	FROM	TO	LENGTH	%S	Cpy:Po	Pd (g/t)	Pt (g/t)	Au (g/t)	Cu (%)	Ni (%)
		-moderately magnetic -gabbro xenoliths, fractured and cemented From 317.25m to 318.80m: Intermediate Dike ~80° to core axis -plagioclase serriate texture																
349.50	396.40	DIORITE-QUARTZ DIORITE	Diorite	2	2			128	349.50	352.00	2.50	tr	0.002	0.001	0.001	0.006	0.006	0.002
		COLOUR: GREENISH-GREY	Diorite	2	2			129	352.00	354.00	2.00	tr	0.021	0.002	0.003	0.004	0.003	0.002
		GRAIN SIZE: FINE TO MEDIUM GRAINED	Diorite	2	2			130	354.00	357.00	3.00	tr	0.130	0.008	0.010	0.007	0.006	0.001
		PLAG (%): 50-80	Diorite	2	2			131	357.00	360.00	3.00	tr	0.078	0.005	0.006	0.005	0.004	0.001
		CPX (%): N/A	Diorite	2	2			132	360.00	363.00	3.00	tr	0.006	0.001	0.001	0.002	0.002	0.001
		OPX (%): N/A	Diorite	2	2			133	363.00	366.00	3.00	tr	0.053	0.004	0.008	0.004	0.004	0.001
		OTHER MIN. (%) QUARTZ <10-25; AMPHIBOLE 10-30	Diorite	2	2			134	366.00	369.00	3.00	tr	0.017	0.002	0.005	0.009	0.003	0.001
		-hard and locally weakly magnetic, moderate variations in texture and composition, locally weakly to moderately foliated at 50° to core axis	Diorite	2	2			135	369.00	372.00	3.00	tr	0.003	0.000	0.003	0.006	0.002	0.001
		-local minor fine grained disseminated epidote	Diorite	2	2			136	372.00	375.00	3.00	tr	0.011	0.001	0.002	0.003	0.002	0.001
		-local patchy pinky-reddish hematite/potassic alteration of Plag	Diorite	2	2			137	375.00	378.00	3.00	tr	0.001	0.000	0.001	0.003	0.002	0.001
		-moderate erratic creamy plag stringers and veinlets	Diorite	2	2			138	378.00	381.00	3.00	tr	0.008	0.001	0.002	0.005	0.002	0.001
		-quartz appears as fine grained grey quartz associated with white plag to local blue interstitial quartz predominantly associated with coarser grained plag rich sub-sections.	Diorite	2	2			139	381.00	384.00	3.00	tr	0.005	0.001	0.002	0.006	0.003	0.001
		-amphibole is predominantly green to locally blackish-green	Diorite	2	2			140	384.00	387.00	3.00	tr	0.001	0.000	0.001	0.003	0.002	0.001
		-moderate to local strong alteration of Plag, locally hematite	Diorite	2	2			141	387.00	390.00	3.00	tr	0.001	0.000	0.001	0.005	0.003	0.001
		-trace fine grained disseminated pyrite	Diorite	2	2			142	390.00	393.00	3.00	tr	0.007	0.001	0.001	0.005	0.003	0.001
		-sharp contact at 396.40m at 30° to core axis marked by chloritic shear/fault zone.	Diorite	2	2			143	393.00	396.40	3.40	tr	0.001	0.000	0.001	0.004	0.002	0.002

DIAMOND DRILL CORE LOGGING SHEETS

NORTH AMERICAN PALLADIUM LTD

LAC DES ILES MINES LTD.

LOGGED BY: Brian Nelson & Gerry Katchen

SIGNATURE:

PROPERTY: Lac des Iles

ZONE: Roby

HOLE NO.: 01-079

Page 12 of 21

METERAGE		DESCRIPTION	ROCK CODE	Alt'n		Bx Matrix		SAMPLES					ASSAYS						
FROM	TO			Plag	Pxr	Comp	Prop'n	No.	FROM	TO	LENGTH	%S	Cpy:Po	Pd (g/t)	Pt (g/t)	Au (g/t)	Cu (%)	Ni (%)	Co (%)
396.40	397.90	FAULT-SHEAR ZONE	Ft.Shr.	4	4			144	396.40	397.90	1.50		0.105	0.011	0.001	0.026	0.037	0.006	
<p>COLOUR: GREEN</p> <p>GRAIN SIZE: MEDIUM</p> <p>PLAG (%): NIL</p> <p>CPX (%): NIL</p> <p>OPX (%): NIL</p> <p>OTHER MIN. (%) N/A</p> <p>-grading from hard cemented fault gouge down-hole into dark-green chloritic and sheared, combination of recemented fault-gouge and blocky sheared melanogabbro, shearing at 30 to 40° to core axis</p> <p>-strong to intense fracturing most commonly along foliation planes</p> <p>-local crumby-blocky-fractured core,</p> <p>-local moderate erratic quartz-Plag stringers, strongly altered to chlorite and talc</p> <p>-no visible sulphide mineralized</p> <p>-sharp shear contact at 397.90m at 30° to core axis</p>																			

DIAMOND DRILL CORE LOGGING SHEETS

NORTH AMERICAN PALLADIUM LTD

LAC DES ILES MINES LTD.

LOGGED BY: Brian Nelson & Gerry Katchen

SIGNATURE:

PROPERTY: Lac des Iles

ZONE: Roby

HOLE NO.: 01-079

Page 13 of 21

METERAGE		DESCRIPTION	ROCK CODE	Alt'n		Bx Matrix		SAMPLES					ASSAYS							
FROM	TO			Plag	Pxr	Comp	Prop'n	No.	FROM	TO	LENGTH	%S	Cpy:Po	Pd (g/t)	Pt (g/t)	Au (g/t)	Cu (%)	Ni (%)	Co (%)	
397.70	450.50	HETEROLITHIC GABBRONORITE BRECCIA	Mgab	4	3	Gabnor	10	145	397.90	400.00	2.10				0.006	0.002	0.001	0.006	0.034	0.006
		COLOUR: NIL	Mgab	4	3	Gabnor	20	146	400.00	402.00	2.00				0.003	0.001	0.001	0.012	0.030	0.006
		GRAIN SIZE: NIL	Mgab	4	3			147	402.00	405.00	3.00				0.140	0.013	0.004	0.022	0.042	0.007
		PLAG (%): 10-50	Mgab	3	3	Gabnor	20	148	405.00	408.00	3.00	0.25			0.175	0.010	0.012	0.062	0.053	0.008
		CPX (%): 25-60	Mgab	3	3	Gabnor	25	149	408.00	411.00	3.00	tr			0.110	0.007	0.006	0.048	0.046	0.007
		OPX (%): <10-30	Mgab	3	3	Gabnor	10	150	411.00	414.00	3.00	tr			0.063	0.005	0.008	0.028	0.049	0.007
		OTHER MIN. (%) N/A	Mgab	2	3	Gabnor	30	151	414.00	417.00	3.00	tr			0.036	0.004	0.037	0.024	0.039	0.006
		<p>Clast supported Breccia composed of 80% medium grained to coarser medium grained predominantly Gabbro fragments along with minor gabbro fragments set in a fine grained to finer medium dark green grey gabbro matrix, fine, medium grained fragments and fine medium grained matrix contacts are predominantly very sharp and oriented at various degrees to core axis, fragment composition varies from melanogabbro to gabbro with minor gabbroic fragments, moderate to locally strong erratic white-grey quartz-plag stringers, veinlets, veins and irregular blotches rare local narrow brecciated sub-sections on a 10 to 20cm scale at fragment matrix contacts.</p> <p>-moderate to strong alteration of chalcopyrite to actinolite +/- talc</p> <p>-moderate to strong alteration of Opc to tremolite +/- talc</p> <p>-moderate to strong alteration of Plag, locally hematized Plag near upper contact</p> <p>-overall unit is weakly sulphide mineralized as local disseminated stringer pyrite, local medium grained blebby chalcopyrite and local medium grained to fine grained disseminated blebs of pyrrhotite</p>	Gabbro	2	2	Gabnor	40	152	417.00	420.00	3.00	0.25			0.013	0.001	0.001	0.017	0.026	0.005
			Gabbro	2	2	Gabnor	15	153	420.00	423.00	3.00				0.024	0.005	0.005	0.010	0.024	0.004
			Gabbro	2	2	Gabnor	40	154	423.00	426.00	3.00	tr			0.240	0.016	0.010	0.031	0.038	0.006
			Gabnor	2	3	Gabnor	5	155	426.00	429.00	3.00	0.25			0.420	0.021	0.016	0.033	0.042	0.005
			Gabnor	2	3	Gabnor	30	156	429.00	432.00	3.00	0.25			0.175	0.013	0.008	0.022	0.040	0.006
			Gabnor	2	3			157	432.00	435.00	3.00	0.5	1:1		0.510	0.055	0.029	0.059	0.099	0.010
			Gabnor	2	3	Gabnor	15	158	435.00	438.00	3.00	0.25			0.083	0.008	0.012	0.018	0.034	0.005
			Gabnor	2	3	Gabnor	30	159	438.00	441.00	3.00	tr			0.270	0.024	0.019	0.020	0.033	0.005
			Gabnor	2	3	Gabnor	10	160	441.00	444.00	3.00	tr			0.150	0.007	0.010	0.017	0.034	0.005
			Gabnor	2	3	Gabnor	40	161	444.00	447.00	3.00	tr			0.013	0.002	0.002	0.020	0.036	0.006
			Gabnor	2	3	Gabnor	20	162	447.00	449.00	2.00	tr			0.140	0.015	0.012	0.024	0.039	0.007
			Gabnor	2	3	Gabnor	10	163	449.00	450.50	1.50	tr			0.005	0.003	0.003	0.013	0.029	0.006

NOTE: Oriented core starts at 417.00m

DIAMOND DRILL CORE LOGGING SHEETS

NORTH AMERICAN PALLADIUM LTD

LAC DES ILES MINES LTD.

LOGGED BY: Brian Nelson & Gerry Katchen

SIGNATURE:

PROPERTY: Lac des Iles

ZONE: Roby

HOLE NO.: 01-079

Page 14 of 21

METERAGE		DESCRIPTION	ROCK CODE	Alt'n		Bx Matrix		SAMPLES					ASSAYS					
FROM	TO			Plag	Pxr	Comp	Prop'n	No.	FROM	TO	LENGTH	%S	Cpy:Po	Pd (g/t)	Pt (g/t)	Au (g/t)	Cu (%)	Ni (%)
		<p>From 400.20m to 400.40m: Late Mafix Dike -fine grained, grey, hard and not magnetic -contact at 400.20m at 60° to core axis -contact at 400.40m at 40° to core axis</p> <p>From 418.50m to 418.90m: Quartz-Plag vein breccia plus healed fault gouge, Quartz-Plag vein contains 25% angular fine grained gabbro fragments.</p>																
450.50	453.55	VARITEXTURED GABBRO	VTGab	2	2			164	450.50	453.55	3.05		0.120	0.009	0.003	0.012	0.023	0.004
		COLOUR: GREENISH-GREY																
		GRAIN SIZE: MEDIUM TO COARSE TO VERY COARSE																
		PLAG (%): 40-60																
		CPX (%): 40-60																
		OPX (%): N/A																
		OTHER MIN. (%) N/A																
		-hard and not magnetic, well defined textural variations, minor erratic white Quartz-Plag stringers, local minor grey stringers infilling late brittle fractures																
		-minor possible altered Opx																
		-moderate alteration of Clinopyroxene to actinolite																
		-moderate alteration of Plag																
		-lower contact marked by healed fault gouge from 453.20m to 453.40m and Diorite dikelet from 453.40m to 453.55.																
453.55	457.30	QUARTZ-VEIN	Qtz-Vn					165	453.55	456.00	2.45		0.017	0.001	0.008	0.012	0.014	0.003
		COLOUR: WHITE	Qtz-Vn					166	456.00	457.30	1.30		0.029	0.001	0.001	0.002	0.003	0.001

DIAMOND DRILL CORE LOGGING SHEETS

NORTH AMERICAN PALLADIUM LTD

LAC DES ILES MINES LTD.

LOGGED BY: Brian Nelson & Gerry Katchen

SIGNATURE:

PROPERTY: Lac des Iles

ZONE: Roby

HOLE NO.: 01-079

Page 15 of 21

METERAGE		DESCRIPTION	ROCK CODE	Alt'n		Bx Matrix		SAMPLES					ASSAYS						
FROM	TO			Plag	Pxr	Comp	Prop'n	No.	FROM	TO	LENGTH	%S	Cpy:Po	Pd (g/t)	Pt (g/t)	Au (g/t)	Cu (%)	Ni (%)	Co (%)
		GRAIN SIZE: NIL																	
		PLAG (%): NIL																	
		CPX (%): NIL																	
		OPX (%): NIL																	
		OTHER MIN. (%) N/A																	
		White, fractured Quartz-vein containing two large 0.5m and 1m scale medium grained Gabbro Xenoliths, overall section moderately to strongly fractured, contacts between vein and fragments at low angle to sub-parallel to core axis, moderate to strong parallel fracture surfaces, fractures oriented at 40° to core axis.																	
		-no visible sulphides																	
		-contact at 453.55 at ~30° to core axis																	
		-irregular contact at 457.30m																	
457.30	500.40	GABBRO	Gabbro	2	3			167	457.30	459.00	1.70	0.5	1:1	0.001	0.000	0.002	0.034	0.031	0.005
		COLOUR: GREEN-GREY	Gabbro	2	3			168	459.00	462.00	3.00	tr		0.009	0.001	0.003	0.045	0.021	0.007
		GRAIN SIZE: FINE TO MEDIUM	Gabbro	2	2			169	462.00	465.00	3.00	0.25	1:>8	0.093	0.011	0.004	0.032	0.031	0.006
		PLAG (%): 40-60	Gabbro	2	2			170	465.00	468.00	3.00	tr		0.050	0.005	0.002	0.013	0.019	0.005
		CPX (%): 40-60	Gabbro	2	2			171	468.00	471.00	3.00	tr		0.003	0.001	0.001	0.015	0.021	0.006
		OPX (%): 0-<10	Gabbro	2	2			172	471.00	474.00	3.00			0.024	0.001	0.004	0.016	0.031	0.005
		OTHER MIN. (%) N/A	Gabbro	2	2			173	474.00	477.00	3.00	0.25	1:1	0.810	0.070	0.021	0.031	0.046	0.006
		Predominantly fine grained to medium grained, green-grey, moderately hard, not magnetic and overall exhibiting an extremely weak varied-texture to locally a moderate varied-texture, weak erratic white-grey Quartz-Plag stringers and veinlets.	Gabbro	2	2			174	477.00	480.00	3.00	tr		0.670	0.056	0.020	0.039	0.052	0.006
			Gabbro	2	2			175	480.00	483.00	3.00	tr		0.190	0.025	0.009	0.027	0.026	0.005
			Gabbro	2	2			176	483.00	486.00	3.00	tr		0.004	0.001	0.003	0.014	0.020	0.005
			Gabbro	2	2			177	486.00	489.00	3.00			0.044	0.004	0.005	0.015	0.024	0.005
			Gabbro	2	2			178	489.00	492.00	3.00	tr		0.029	0.005	0.005	0.018	0.026	0.005
			Gabbro	2	2			179	492.00	495.00	3.00	tr		0.003	0.001	0.002	0.010	0.020	0.005
			Gabbro	2	2			180	495.00	498.00	3.00	tr		0.023	0.003	0.002	0.010	0.020	0.004
			Gabbro	2	2			181	498.00	500.40	2.40			0.350	0.035	0.009	0.023	0.035	0.006

DIAMOND DRILL CORE LOGGING SHEETS

NORTH AMERICAN PALLADIUM LTD

LAC DES ILES MINES LTD.

LOGGED BY: Brian Nelson & Gerry Katchen

SIGNATURE:

PROPERTY: Lac des Iles

ZONE: Roby

HOLE NO.: 01-079

Page 16 of 21

METERAGE		DESCRIPTION	ROCK CODE	Alt'n		Bx Matrix		SAMPLES					ASSAYS					
FROM	TO			Plag	Pxr	Comp	Prop'n	No.	FROM	TO	LENGTH	%S	Cpy:Po	Pd (g/t)	Pt (g/t)	Au (g/t)	Cu (%)	Ni (%)
		-moderate to locally strong alteration of Cpx to actinolite -moderate alteration of Plag -trace to minor to locally 0.5% sulphide mineralization fine grained disseminated to blebby pyrrhotite plus local associated chalcopyrite, minor fine grained disseminated Pyrite. From 473.50m to 474.00m: Core lost (drill induced)																
500.40	559.50	GABBRO & LATE MAFIC DIKE	Gabbro	2	2			182	500.40	502.00	1.60		0.026	0.002	0.001	0.006	0.020	0.004
		COLOUR: GREEN-GREY	Mdike	2	2			183	502.00	504.00	2.00		0.029	0.003	0.006	0.008	0.022	0.004
		GRAIN SIZE: COARSE TO MEDIUM	Mdike	2	2			184	504.00	507.00	3.00		0.020	0.002	0.003	0.009	0.020	0.004
		PLAG (%): 50-60	Gabbro	2	2			185	507.00	510.00	3.00		0.110	0.013	0.003	0.009	0.023	0.004
		CPX (%): 40-50	Gabbro	2	2			186	510.00	513.00	3.00		0.042	0.004	0.001	0.008	0.014	0.005
		OPX (%): N/A	Gabbro	2	2			187	513.00	516.00	3.00		0.083	0.008	0.006	0.011	0.026	0.005
		OTHER MIN. (%) N/A	Gabbro	2	2			188	516.00	519.00	3.00	tr	0.120	0.010	0.010	0.021	0.032	0.005
		Predominantly coarse grained to medium grained, green-grey, hard and not magnetic cut by numerous 20cm to 2 metre scale late Mafic dikes, minor grey Plag rich stringers and veinlets most commonly oriented at 30 to 40° to core axis, locally gabbro exhibits a very weak varied-texture, local medium grained more melanocratic dark green-grey 30cm to 1 metre scale gabbroic xenoliths, local minor stringer epidote.	Gabbro	2	2			189	519.00	522.00	3.00	tr	0.380	0.039	0.023	0.031	0.033	0.005
		-moderate alteration of Cpx to actinolite	Gabbro	2	2			190	522.00	525.00	3.00		0.064	0.006	0.006	0.012	0.019	0.004
		-moderate alteration of Plag	Gabbro	2	2			191	525.00	528.00	3.00	tr	0.480	0.051	0.026	0.030	0.051	0.006
		-trace to locally minor fine grained to medium grained disseminated pyrite	Gabbro	2	2			192	528.00	531.00	3.00	0.25	0.195	0.021	0.016	0.020	0.024	0.005
			Gabbro	2	2			193	531.00	534.00	3.00		0.063	0.006	0.004	0.011	0.020	0.004
			Gabbro	2	2			194	534.00	537.00	3.00		0.051	0.004	0.006	0.013	0.022	0.004
			Gabbro	2	2			195	537.00	540.00	3.00		0.044	0.004	0.005	0.008	0.018	0.004
			Gabbro	2	2			196	540.00	543.00	3.00		0.098	0.009	0.006	0.014	0.023	0.005
			Gabbro	2	2			197	543.00	546.00	3.00		0.082	0.011	0.007	0.013	0.018	0.004
			Gabbro	2	2			198	546.00	549.00	3.00		0.089	0.008	0.009	0.016	0.018	0.004
			Gabbro	2	2			199	549.00	552.00	3.00		0.530	0.054	0.020	0.033	0.035	0.005
			Gabbro	2	2			200	552.00	555.00	3.00	0.25	2.100	0.234	0.100	0.087	0.076	0.007
			Gabbro	2	2			201	555.00	558.00	3.00	tr	0.850	0.100	0.046	0.037	0.049	0.005
			Gabbro	2	2			202	558.00	559.50	1.50	tr	0.560	0.110	0.008	0.009	0.033	0.004
		From 503.80m to 504.50m: lake Mafic Dike -fine grained, dark grey, not magnetic																

DIAMOND DRILL CORE LOGGING SHEETS

NORTH AMERICAN PALLADIUM LTD

LAC DES ILES MINES LTD.

LOGGED BY: Brian Nelson & Gerry Katchen

SIGNATURE:

PROPERTY: Lac des Iles

ZONE: Roby

HOLE NO.: 01-079

Page 18 of 21

METERAGE		DESCRIPTION	ROCK CODE	Alt'n		Bx Matrix		SAMPLES						ASSAYS					
FROM	TO			Plag	Pxr	Comp	Prop'n	No.	FROM	TO	LENGTH	%S	Cpy:Po	Pd (g/t)	Pt (g/t)	Au (g/t)	Cu (%)	Ni (%)	Co (%)
				From 514.50m to 523.20m: 30% - 20cm to 1 metre scale fine grained, more melanocratic gabbroic xenoliths exhibiting predominantly sharp irregular contacts with most gabbro -some of presumed xenoliths possibly Mafic Dikes															
		From 523.50m to 524.10m: Irregular lake Mafic Dikes -possibly shear brecciated																	
		From 528.70m to 529.20m: Late Mafic Dike -locally sheared, irregular contacts																	
		From 530.20m to 530.85m: Lake Mafic Dike -fine grained, grey, not magnetic, locally containing coarse grained cubic pyrite -sharp irregular-wavy contact at 530.20m -sharp contact at 530.45 at 40° to core axis																	
		From 533.70m to 534.00m: Lake Mafic Dike -contacts at 60° to core axis																	
		From 534.00m to 537.40m: Medium grained gabbroic xenoliths? -gradational contacts																	
		From 554.80m to 555.30m: Medium grained gabbroic xenoliths? -gradational contacts																	
559.50	569.40	VARITEXTURED GABBRO	Gabbro	2	3			203	559.50	561.00	1.50			0.530	0.050	0.022	0.013	0.038	0.005
		COLOUR: GREEN-GREY	Gabbro	2	3			204	561.00	564.00	3.00			0.330	0.034	0.011	0.012	0.029	0.005
		GRAIN SIZE: MEDIUM TO COARSE	Gabbro	2	3			205	564.00	567.00	3.00			0.400	0.045	0.026	0.023	0.033	0.005
		PLAG (%): 40-60	Gabbro	2	3			206	567.00	569.40	2.40	0.5	1:4	2.200	0.274	0.490	0.105	0.096	0.008

DIAMOND DRILL CORE LOGGING SHEETS

NORTH AMERICAN PALLADIUM LTD

LAC DES ILES MINES LTD.

LOGGED BY: Brian Nelson & Gerry Katchen

SIGNATURE:

PROPERTY: Lac des Iles

ZONE: Roby

HOLE NO.: 01-079

Page 19 of 21

METERAGE		DESCRIPTION	ROCK CODE	Alt'n		Bx Matrix		SAMPLES					ASSAYS						
FROM	TO			Plag	Pxr	Comp	Prop'n	No.	FROM	TO	LENGTH	%S	Cpy:Po	Pd (g/t)	Pt (g/t)	Au (g/t)	Cu (%)	Ni (%)	Co (%)
		CPX (%): 40-60 OPX (%): N/A OTHER MIN. (%) N/A Medium grained to very coarse grained, green-grey, hard and not magnetic, well defined varied-texture, gradational to sharp contacts between texture variations. -moderate to strong alteration of CPX to actinolite +/- talc -weak to moderate alteration of Plag -no visible sulphide mineralization within varitextured gabbro From 567.15m to 567.70m: Melanogabbro Xenolith -medium grained, green-grey, weakly magnetic and moderately soft -composed of 80% Cpx and 20% Plag -moderate alteration of Cpx and Plag -gradational upper contact -lower contact at 60° to core axis -2% sulphide mineralization From 568.00m to 568.50m: Microgabbro fragment/xenolith																	
569.40	581.70	PYROXENITE	Pxn		3			207	569.40	571.00	1.60	3.0	1:3	4.300	0.575	0.430	0.191	0.144	0.011
		COLOUR: GREY-GREEN	Pxn		3			208	571.00	572.50	1.50	3.0	1:3	4.200	0.542	0.440	0.169	0.154	0.012
		GRAIN SIZE: MEDIUM	Pxn		3			209	572.50	575.50	3.00	3.0	1:3	5.600	0.654	0.640	0.257	0.185	0.013
		PLAG (%): 0-5	Pxn		3			211	575.50	577.00	1.50	2.0	1:3	4.900	1.880	0.310	0.260	0.117	0.009
		CPX (%): N/A	Pxn		3			212	577.00	578.50	1.50	0.5	1:3	3.700	0.391	0.310	0.124	0.114	0.009
		OPX (%): N/A	Pxn		3			213	578.50	580.00	1.50	0.5	1:3	3.200	0.361	0.093	0.130	0.098	0.009
		OTHER MIN. (%) 95-100 PXN (CPX +OPX)	Pxn		3			214	580.00	581.70	1.70	1.0	1:3	3.500	0.424	0.155	0.112	0.123	0.009

DIAMOND DRILL CORE LOGGING SHEETS

NORTH AMERICAN PALLADIUM LTD

LAC DES ILES MINES LTD.

LOGGED BY: Brian Nelson & Gerry Katchen

SIGNATURE:

PROPERTY: Lac des Iles

ZONE: Roby

HOLE NO.: 01-079

Page 20 of 21

METERAGE		DESCRIPTION	ROCK CODE	Alt'n		Bx Matrix		SAMPLES					ASSAYS						
FROM	TO			Plag	Pxr	Comp	Prop'n	No.	FROM	TO	LENGTH	%S	Cpy:Po	Pd (g/t)	Pt (g/t)	Au (g/t)	Cu (%)	Ni (%)	Co (%)
		<p>Medium grained, slightly grey-green, moderately soft to soft and strongly magnetic, locally moderately fractured at various angles to core axis, local moderate serpentine and slickensides on lower angle fractures.</p> <p>-strong alteration of Cpx to actinolite +/- talc</p> <p>-strong alteration of Opx to tremolite +/- talc</p> <p>-moderate to weak sulphide mineralized predominantly as fine grained to medium grained disseminated interstitial chalcopyrite:pyrrhotite:pyrite, very local very coarse grained blebs of Pyrite, overall 2-3% combined sulphide mineralization.</p> <p>-contact at 567.40m at 70° to core axis</p> <p>-contact at 578.75m at 20 to 30° to core axis</p> <p>From 580.00m to 580.90m: Late Mafic Dike</p> <p>-very fine grained, dark grey, very hard and not magnetic</p> <p>-minor very fine grained disseminated Pyrite</p> <p>-contact at 580.00m at 30° to core axis</p> <p>-contact at 560.90m at 50° to core axis</p>																	
581.70	621.00	GABBRO	Gabbro	2	2			215	581.70	585.00	3.30	tr	0.950	0.112	0.125	0.049	0.055	0.006	
		COLOUR: GREEN-GREY	Gabbro	2	2			216	585.00	588.00	3.00	tr	0.290	0.033	0.040	0.037	0.037	0.005	
		GRAIN SIZE: FINE TO MEDIUM	Gabbro	2	2			217	588.00	589.80	1.80	tr	0.500	0.058	0.061	0.038	0.036	0.005	
		PLAG (%): 40-50	Gabbro	2	2			218	589.80	591.20	1.40	3.0	1.6	5.000	0.477	0.530	0.265	0.195	0.014
		CPX (%): 50-60	Gabbro	2	2			219	591.20	594.00	2.80	tr	0.270	0.039	0.051	0.030	0.029	0.005	
		OPX (%): N/A	Gabbro	2	2			220	594.00	597.00	3.00	0.25		0.970	0.112	0.066	0.039	0.049	0.005
		OTHER MIN. (%) N/A	Gabbro	2	3			221	597.00	600.00	3.00	0.25		0.400	0.041	0.039	0.040	0.046	0.005
		Hard and not magnetic, minor gradational variations in grain size, local relatively narrow sub-sections/Xenoliths of mineralized Pyroxene, local minor epidote	Gabbro	2	3			222	600.00	603.00	3.00	0.25		1.570	0.166	0.125	0.069	0.056	0.005
		-moderate to locally strong alteration of Cpx to actinolite +/- talc	Gabbro	2	3			223	603.00	606.00	3.00	tr		1.240	0.124	0.140	0.072	0.058	0.005
			Gabbro	2	3			224	606.00	609.00	3.00	0.5	1.6	1.710	0.213	0.150	0.067	0.058	0.006
			Gabbro	3	3			225	609.00	612.00	3.00	tr		0.880	0.098	0.120	0.051	0.046	0.004
			Gabbro	3	3			226	612.00	615.00	3.00	0.5	1.4	2.500	0.298	0.230	0.118	0.099	0.008
			Gabbro	3	3			227	615.00	618.00	3.00	0.5	1.4	1.130	0.117	0.120	0.100	0.092	0.007
			Gabbro	3	3			228	618.00	621.00	3.00	0.25	1.4	0.270	0.023	0.041	0.045	0.044	0.005



ALS Chemex

Aurora Laboratory Services Ltd.
 Analytical Chemists * Geochemists * Registered Assayers
 5175 Timberlea Blvd., Mississauga
 Ontario, Canada L4W 2S3
 PHONE: 905-624-2806 FAX: 905-624-6163

To: LAC DES ILES MINES LTD.-EXPLORATION
 NORTH AMERICAN PALLADIUM
 P.O. BOX 10547
 THUNDER BAY, ON
 P7B 6T9

Page Number :1-B
 Total Pages :2
 Certificate Date: 14-NOV-2001
 Invoice No. :10127776
 P.O. Number :1000255
 Account :MZI

Project : #1033-01-079
 Comments : ATTN: MOE LAVIGNE

CERTIFICATE OF ANALYSIS A0127776

SAMPLE	PREP CODE	Cr ppm (ICP)	K % (ICP)	Mg % (ICP)	Mn ppm (ICP)	Mo ppm (ICP)	Na % P (ICP)	P ppm (ICP)	Pb ppm (ICP)	Sb ppm (ICP)	Sr ppm (ICP)	Ti % V (ICP)	W ppm (ICP)	Zn ppm (ICP)	Cu ppm (ICP)	Ni ppm (ICP)	Co ppm (ICP)	
01-079-STA-009	2143285	168	0.25	6.63	885	< 1	1.15	10	6	< 5	192	0.07	99	< 10	60	1260	1390	66
01-079-001	1388 276	132	0.74	5.62	725	< 1	1.34	30	6	< 5	204	0.05	72	< 10	56	267	317	40
01-079-002	1388 276	106	0.66	5.11	895	< 1	1.80	170	10	< 5	221	0.14	84	< 10	54	197	248	39
01-079-003	1388 276	127	0.80	5.16	775	1	1.75	50	6	< 5	239	0.07	74	< 10	42	35	261	35
01-079-004	1388 294	22	0.27	1.70	1290	1	2.55	900	2	< 5	278	0.56	157	< 10	56	146	31	39
01-079-005	1388 294	127	0.53	5.86	710	1	1.30	30	6	< 5	208	0.07	78	< 10	36	92	284	42
01-079-006	1388 276	121	0.28	5.66	700	1	1.11	< 10	2	< 5	181	0.05	69	< 10	40	78	271	40
01-079-007	1388 276	116	0.21	5.81	745	< 1	1.14	< 10	2	< 5	185	0.05	69	10	44	40	269	40
01-079-008	1388 276	96	0.38	5.37	820	1	1.40	70	2	< 5	222	0.11	78	< 10	42	84	273	41
01-079-009	1388 276	99	0.40	5.65	770	1	1.28	< 10	6	< 5	208	0.06	90	< 10	46	238	371	41
01-079-010	1388 276	101	0.19	5.87	800	< 1	1.33	< 10	< 2	< 5	196	0.05	86	< 10	40	173	360	43
01-079-011	1388 294	91	0.18	5.50	815	2	1.38	< 10	2	< 5	210	0.05	71	< 10	42	115	303	41
01-079-012	1388 294	107	0.06	5.54	810	< 1	1.19	< 10	< 2	< 5	184	0.07	96	< 10	44	240	375	42
01-079-013	1388 294	176	0.11	7.27	980	< 1	1.18	< 10	6	< 5	167	0.06	88	< 10	56	145	390	53
01-079-014	1388 276	122	0.20	5.32	865	1	1.36	10	< 2	< 5	195	0.07	80	< 10	56	209	304	42
01-079-015	1388 276	136	0.22	6.13	1025	< 1	1.47	< 10	8	< 5	221	0.07	101	< 10	66	351	417	54
01-079-016	1388 276	114	0.19	5.53	735	< 1	1.38	< 10	2	< 5	221	0.04	63	< 10	44	72	277	39
01-079-017	1388 276	358	0.09	8.19	1120	< 1	1.09	< 10	< 2	< 5	177	0.07	97	< 10	66	138	413	60
01-079-018	1388 276	138	0.15	5.87	925	1	1.31	< 10	2	< 5	207	0.06	83	< 10	64	447	502	54
01-079-019	1388 276	135	0.18	6.18	905	1	1.18	< 10	2	< 5	194	0.06	78	10	52	354	417	49
01-079-020	1388 276	132	0.34	6.28	960	< 1	1.49	< 10	36	< 5	168	0.06	83	< 10	222	931	580	57
01-079-021	1388 276	124	0.25	6.34	835	1	1.21	< 10	2	< 5	195	0.05	69	< 10	40	124	348	43
01-079-022	1388 276	149	0.10	6.63	840	< 1	1.08	< 10	< 2	< 5	177	0.05	76	< 10	44	101	343	46
01-079-023	1388 276	126	0.12	5.09	750	1	1.14	< 10	6	< 5	183	0.05	65	< 10	52	255	355	42
01-079-024	1388 276	143	0.10	6.31	805	1	1.16	50	6	5	156	0.05	70	< 10	80	286	419	56
01-079-025	1388 276	132	0.14	5.89	810	< 1	1.13	30	< 2	< 5	156	0.05	68	< 10	42	491	506	55
01-079-026	1388 276	138	0.12	6.01	895	< 1	1.15	< 10	6	< 5	191	0.06	77	< 10	60	584	496	59
01-079-027	1388 276	118	0.05	4.71	680	1	1.13	10	12	5	170	0.04	67	< 10	40	295	480	52
01-079-028	1388 276	120	0.06	5.34	825	< 1	1.10	10	4	5	178	0.05	68	< 10	38	357	384	51
01-079-029	1388 276	332	0.14	7.90	1125	< 1	0.88	10	8	5	153	0.07	88	< 10	54	587	614	73
01-079-030	1388 276	163	0.07	6.57	855	< 1	1.10	< 10	10	15	156	0.05	71	< 10	44	250	407	57
01-079-031	1388 276	131	0.07	5.98	895	< 1	1.13	< 10	12	< 5	149	0.06	82	< 10	44	310	405	56
01-079-032	1388 276	200	0.07	6.84	965	< 1	1.03	< 10	< 2	5	156	0.06	87	< 10	50	296	502	67
01-079-033	1388 276	121	0.10	5.53	685	1	1.16	< 10	4	10	168	0.04	62	< 10	36	298	368	48
01-079-034	1388 276	121	0.09	5.40	775	< 1	1.17	< 10	2	20	196	0.05	64	< 10	38	476	528	52
01-079-035	1388 276	179	0.11	6.73	945	3	1.01	< 10	4	10	150	0.06	78	< 10	44	479	495	60
01-079-036	1388 276	148	0.12	6.38	925	< 1	1.09	< 10	2	< 5	175	0.07	82	< 10	42	341	532	62
01-079-037	1388 276	140	0.09	5.48	985	4	1.15	< 10	2	20	183	0.08	102	10	48	783	818	66
01-079-038	1388 276	144	0.10	5.79	965	< 1	1.17	< 10	6	5	181	0.07	92	10	48	883	941	71
01-079-039	1388 276	144	0.19	6.50	980	< 1	1.19	< 10	6	20	153	0.06	87	< 10	44	545	1050	70





ALS Chemex

Aurora Laboratory Services Ltd.
 Analytical Chemists * Geochemists * Registered Assayers
 5175 Timberlea Blvd., Mississauga
 Ontario, Canada L4W 2S3
 PHONE: 905-624-2806 FAX: 905-624-6163

To: LAC DES ILES MINES LTD.-EXPLORATION
 NORTH AMERICAN PALLADIUM
 P.O. BOX 10547
 THUNDER BAY, ON
 P7B 6T9

Page Number :2-A
 Total Pages :2
 Certificate Date: 14-NOV-2001
 Invoice No. : I0127776
 P.O. Number : 1000255
 Account : MZI

Project : #1033-01-079
 Comments : ATTN: MOE LAVIGNE

CERTIFICATE OF ANALYSIS A0127776

SAMPLE	PREP		Pd ppb	Pt ppb	Au ppb	Al2O3	Fe2O3	MgO	Cu %	Ni %	Co %	Fe %	S %	Ag ppm	Al %	As ppm	Ba ppm	Be ppm	Bi ppm	Ca %	Cd ppm
	CODE		ICP-MS	ICP-MS	ICP-MS	% Calc	% Calc	% Calc	calc.	calc.	calc.	(ICP)	(ICP)	(ICP)	(ICP)	(ICP)	(ICP)	(ICP)	(ICP)	(ICP)	(ICP)
01-079-040	1388	276	400	85.5	75	14.80	6.83	11.65	0.0447	0.0620	0.0059	4.78	0.14	< 0.5	7.82	< 5	40	< 0.5	< 2	6.0	< 0.5
01-079-041	1388	276	290	130.0	52	18.25	6.26	10.45	0.0309	0.0473	0.0057	4.38	0.10	< 0.5	9.65	< 5	50	< 0.5	< 2	6.9	< 0.5
01-079-042	1388	276	1120	197.0	280	14.60	6.31	9.38	0.0785	0.0763	0.0055	4.41	0.24	< 0.5	7.72	< 5	40	< 0.5	< 2	6.2	< 0.5
01-079-043	1388	276	1150	199.0	77	15.00	6.28	9.38	0.0622	0.0714	0.0055	4.39	0.18	< 0.5	7.94	< 5	40	< 0.5	< 2	6.3	< 0.5
01-079-044	1388	276	1930	254	260	15.45	6.82	9.25	0.1425	0.1085	0.0065	4.77	0.39	< 0.5	8.19	< 5	50	< 0.5	< 2	6.4	< 0.5
01-079-045	1388	276	570	126.0	68	16.45	6.42	9.40	0.0698	0.0663	0.0059	4.49	0.21	< 0.5	8.70	< 5	60	< 0.5	< 2	6.7	< 0.5
01-079-046	1388	276	210	33.5	62	15.95	6.19	9.07	0.0438	0.0408	0.0053	4.33	0.09	< 0.5	8.44	< 5	50	< 0.5	< 2	6.2	< 0.5
01-079-047	1388	276	470	96.0	65	14.65	6.59	9.92	0.0376	0.0544	0.0059	4.61	0.13	< 0.5	7.75	< 5	40	< 0.5	< 2	5.9	< 0.5
01-079-048	1388	276	380	76.0	32	16.00	5.58	8.71	0.0264	0.0387	0.0049	3.90	0.07	< 0.5	8.46	< 5	50	< 0.5	< 2	6.1	< 0.5
01-079-049	1388	276	150	37.0	13	15.50	5.55	9.25	0.0144	0.0342	0.0049	3.88	0.04	< 0.5	8.21	< 5	50	< 0.5	< 2	6.2	< 0.5
01-079-050	1388	276	760	118.5	100	15.55	6.31	8.84	0.0664	0.0681	0.0064	4.41	0.26	< 0.5	8.24	< 5	60	< 0.5	< 2	6.4	< 0.5
01-079-051	1388	276	430	70.0	36	17.20	5.65	9.32	0.0487	0.0488	0.0052	3.95	0.16	< 0.5	9.09	< 5	140	< 0.5	< 2	6.1	< 0.5
01-079-052	1388	276	51	11.5	11	14.55	8.16	7.26	0.0156	0.0164	0.0050	5.71	0.16	< 0.5	7.69	< 5	80	1.5	< 2	7.5	< 0.5
01-079-053	1388	276	145	34.5	34	13.95	8.48	6.63	0.0279	0.0344	0.0060	5.93	0.19	< 0.5	7.37	< 5	50	< 0.5	< 2	6.9	< 0.5
01-079-054	1388	276	200	37.0	27	15.15	6.15	8.17	0.0384	0.0410	0.0053	4.30	0.12	< 0.5	8.02	< 5	50	< 0.5	< 2	6.6	< 0.5
01-079-055	1388	276	33	11.0	7	15.50	3.90	4.29	0.0127	0.0183	0.0029	2.73	0.05	< 0.5	8.21	< 5	100	< 0.5	< 2	7.0	< 0.5
01-079-056	1388	276	60	12.5	11	14.85	7.39	5.94	0.0147	0.0200	0.0050	5.17	0.10	< 0.5	7.85	< 5	50	< 0.5	< 2	7.0	< 0.5
01-079-057	1388	276	18	6.0	17	14.45	8.42	6.77	0.0249	0.0183	0.0059	5.89	0.11	< 0.5	7.65	< 5	50	< 0.5	< 2	7.3	< 0.5
01-079-058	1388	294	93	23.5	36	13.15	7.59	6.07	0.0453	0.0251	0.0052	5.31	0.19	< 0.5	6.95	< 5	50	< 0.5	< 2	6.8	< 0.5
01-079-059	1388	294	170	35.0	33	15.95	6.08	7.30	0.0356	0.0388	0.0051	4.25	0.14	< 0.5	8.45	< 5	50	< 0.5	< 2	7.5	< 0.5
01-079-060	1388	276	200	31.5	32	18.60	5.56	8.64	0.0338	0.0364	0.0051	3.89	0.09	< 0.5	9.85	< 5	60	< 0.5	< 2	7.5	< 0.5
01-079-061	1388	276	780	63.0	49	17.60	5.80	8.04	0.0540	0.0590	0.0058	4.06	0.30	< 0.5	9.31	5	200	< 0.5	< 2	7.2	< 0.5
01-079-062	1388	276	210	25.0	22	15.80	5.78	7.33	0.0272	0.0294	0.0047	4.04	0.20	< 0.5	8.36	< 5	80	< 0.5	< 2	7.4	< 0.5
01-079-063	1388	276	145	23.5	37	16.85	5.98	8.75	0.0322	0.0334	0.0048	4.18	0.11	< 0.5	8.93	< 5	50	< 0.5	< 2	8.6	< 0.5
01-079-STA-010	214	3285	3100	289	290	16.10	7.43	11.30	0.1150	0.1310	0.0080	5.20	0.38	< 0.5	8.51	< 5	60	< 0.5	< 2	6.7	< 0.5

CERTIFICATION: _____ +



ALS Chemex

Aurora Laboratory Services Ltd.
 Analytical Chemists * Geochemists * Registered Assayers
 5175 Timberlea Blvd., Mississauga
 Ontario, Canada L4W 2S3
 PHONE: 905-624-2806 FAX: 905-624-6163

To: LAC DES ILES MINES LTD.-EXPLORATION
 NORTH AMERICAN PALLADIUM
 P.O. BOX 10547
 THUNDER BAY, ON
 P7B 6T9

Page Number : 1-B
 Total Pages : 2
 Certificate Date: 13-NOV-2001
 Invoice No. : 10127913
 P.O. Number : 1000256
 Account : MZI

Project : #1033-01-079
 Comments: ATTN: MOE LAVIGNE

CERTIFICATE OF ANALYSIS A0127913

SAMPLE	PREP CODE	Cr ppm (ICP)	K % (ICP)	Mg % (ICP)	Mn ppm (ICP)	Mo ppm (ICP)	Na % (ICP)	P ppm (ICP)	Pb ppm (ICP)	Sb ppm (ICP)	Sr ppm (ICP)	Ti % (ICP)	V ppm (ICP)	W ppm (ICP)	Zn ppm (ICP)	Cu ppm (ICP)	Ni ppm (ICP)	Co ppm (ICP)
01-079-STA-011	2143285	144	0.24	6.43	920	< 1	1.12	10	2	< 5	175	0.06	96	< 10	52	1165	1355	67
01-079-064	1388 276	130	0.15	4.56	780	< 1	1.45	< 10	< 2	< 5	226	0.05	80	< 10	32	307	323	38
01-079-065	1388 294	143	0.14	4.39	750	< 1	1.30	< 10	< 2	< 5	196	0.04	69	< 10	28	68	359	35
01-079-066	1388 226	96	0.09	5.51	950	< 1	1.22	< 10	< 2	< 5	191	0.07	102	< 10	44	293	353	51
01-079-067	1388 276	102	0.09	4.28	750	< 1	1.29	< 10	< 2	< 5	216	0.05	87	< 10	32	361	400	44
01-079-068	1388 276	130	0.08	4.98	870	< 1	1.20	< 10	< 2	< 5	188	0.06	96	< 10	38	408	415	47
01-079-069	1388 276	107	0.04	3.82	670	< 1	1.18	10	< 2	< 5	212	0.05	69	< 10	30	291	386	40
01-079-070	1388 276	219	0.10	4.68	790	< 1	1.24	10	< 2	< 5	215	0.07	92	< 10	34	148	255	44
01-079-071	1388 276	102	0.06	4.20	760	< 1	1.23	< 10	< 2	< 5	211	0.05	82	< 10	30	202	264	43
01-079-072	1388 276	96	0.08	4.39	920	< 1	1.42	160	< 2	< 5	236	0.12	119	< 10	48	202	254	48
01-079-073	1388 276	136	0.10	4.26	760	< 1	1.32	< 10	< 2	< 5	223	0.06	91	< 10	28	191	260	41
01-079-074	1388 276	101	0.09	5.71	925	< 1	1.08	< 10	4	< 5	186	0.06	90	< 10	54	626	881	71
01-079-075	1388 276	108	0.07	5.93	985	< 1	1.16	10	< 2	< 5	178	0.06	95	< 10	48	569	693	67
01-079-076	1388 276	117	0.10	6.15	975	< 1	1.16	10	< 2	< 5	198	0.06	96	< 10	48	454	608	63
01-079-077	1388 276	104	0.07	5.33	875	< 1	1.07	< 10	4	< 5	173	0.06	96	< 10	56	1140	1130	70
01-079-078	1388 276	206	0.11	5.94	960	< 1	1.06	< 10	< 2	< 5	174	0.06	98	< 10	58	604	791	64
01-079-079	1388 276	214	0.12	6.27	970	< 1	1.00	< 10	< 2	< 5	168	0.06	97	< 10	44	320	435	54
01-079-080	1388 276	142	0.11	3.85	655	< 1	1.30	< 10	< 2	< 5	219	0.04	70	< 10	26	223	310	35
01-079-081	1388 276	155	0.10	5.10	780	< 1	1.08	< 10	< 2	< 5	186	0.05	82	< 10	34	200	335	46
01-079-082	1388 294	119	0.10	4.53	760	< 1	1.19	< 10	< 2	< 5	206	0.05	80	< 10	32	271	420	45
01-079-083	1388 294	116	0.09	6.09	1005	< 1	1.13	< 10	< 2	< 5	185	0.07	107	< 10	48	917	644	64
01-079-084	1388 294	120	0.18	4.98	850	< 1	1.21	< 10	< 2	< 5	201	0.06	93	< 10	38	892	695	51
01-079-085	1388 276	70	0.21	5.01	880	< 1	1.56	< 10	< 2	< 5	230	0.06	102	< 10	38	473	641	51
01-079-086	1388 276	127	0.12	4.87	835	< 1	1.37	10	< 2	< 5	200	0.07	106	< 10	32	340	574	49
01-079-087	1388 276	537	0.08	7.85	1100	< 1	0.73	10	< 2	< 5	111	0.08	111	< 10	46	244	471	61
01-079-088	1388 276	231	0.09	7.19	1035	< 1	1.07	< 10	< 2	< 5	139	0.06	95	< 10	46	251	491	56
01-079-089	1388 294	551	0.08	8.45	1160	14	0.70	10	< 2	< 5	98	0.09	111	< 10	58	119	519	61
01-079-090	1388 276	550	0.06	8.90	1110	< 1	0.51	< 10	< 2	< 5	79	0.09	105	< 10	54	165	588	65
01-079-091	1388 276	115	0.14	5.43	840	< 1	1.26	< 10	< 2	< 5	186	0.05	83	< 10	38	219	356	47
01-079-092	1388 276	170	0.11	6.36	890	< 1	0.97	< 10	< 2	< 5	148	0.05	80	< 10	44	171	417	50
01-079-093	1388 276	344	0.15	6.72	920	< 1	1.14	< 10	< 2	< 5	164	0.07	106	< 10	44	248	440	52
01-079-094	1388 276	128	0.14	5.71	805	< 1	1.23	10	< 2	< 5	186	0.05	83	< 10	36	256	400	46
01-079-095	1388 276	153	0.26	5.26	800	1	1.24	10	< 2	< 5	196	0.05	84	< 10	36	419	611	49
01-079-096	1388 276	127	0.25	5.59	880	< 1	1.33	20	< 2	< 5	204	0.06	78	< 10	42	434	867	65
01-079-097	1388 276	120	0.20	5.58	875	< 1	1.25	< 10	< 2	< 5	176	0.06	95	< 10	38	209	380	47
01-079-098	1388 276	109	0.15	4.66	760	< 1	1.33	10	< 2	< 5	191	0.05	66	< 10	34	197	374	41
01-079-099	1388 276	103	0.14	4.39	700	< 1	1.29	< 10	< 2	< 5	202	0.04	56	< 10	30	95	304	37
01-079-100	1388 276	92	0.18	4.61	670	< 1	1.47	< 10	< 2	< 5	222	0.05	58	< 10	32	69	297	37
01-079-101	1388 276	80	0.33	4.20	730	< 1	1.61	320	< 2	< 5	372	0.15	85	< 10	36	134	249	36
01-079-102	1388 276	91	0.18	4.97	805	< 1	1.25	60	< 2	< 5	218	0.07	79	< 10	40	152	314	43

CERTIFICATION: _____ +



ALS Chemex

Aurora Laboratory Services Ltd.
 Analytical Chemists * Geochemists * Registered Assayers
 5175 Timberlea Blvd., Mississauga
 Ontario, Canada L4W 2S3
 PHONE: 905-624-2806 FAX: 905-624-6163

To: LAC DES ILES MINES LTD.-EXPLORATION
 NORTH AMERICAN PALLADIUM
 P.O. BOX 10547
 THUNDER BAY, ON
 P7B 6T9

Page Number :2-B
 Total Pages :2
 Certificate Date: 13-NOV-2001
 Invoice No. : I0127913
 P.O. Number : 1000256
 Account : MZI

Project : #1033-01-079
 Comments: ATTN: MOE LAVIGNE

CERTIFICATE OF ANALYSIS A0127913

SAMPLE	PREP CODE	Cr ppm (ICP)	K % (ICP)	Mg % (ICP)	Mn ppm (ICP)	Mo ppm (ICP)	Na % (ICP)	P ppm (ICP)	Pb ppm (ICP)	Sb ppm (ICP)	Sr ppm (ICP)	Ti % (ICP)	V ppm (ICP)	W ppm (ICP)	Zn ppm (ICP)	Cu ppm (ICP)	Ni ppm (ICP)	Co ppm (ICP)
01-079-103	1388 276	88	0.11	4.42	675	< 1	1.20	< 10	< 2	< 5	189	0.04	60	< 10	34	138	286	37
01-079-104	1388 276	103	0.14	4.62	710	< 1	1.25	30	< 2	< 5	189	0.05	66	< 10	38	404	558	46
01-079-105	1388 276	82	0.11	4.36	710	< 1	1.26	10	< 2	< 5	179	0.05	71	< 10	40	359	430	43
01-079-106	1388 226	111	0.22	5.33	900	3	1.16	< 10	2	< 5	176	0.06	83	< 10	50	400	461	51
01-079-107	1388 226	40	0.15	3.62	990	< 1	1.63	20	< 2	< 5	219	0.19	170	< 10	50	611	284	54
01-079-108	1388 276	113	0.12	4.81	800	< 1	1.30	30	< 2	< 5	186	0.06	84	< 10	42	446	471	47
01-079-109	1388 226	294	0.09	6.09	1020	< 1	1.05	10	< 2	< 5	161	0.10	120	< 10	48	461	500	54
01-079-110	1388 276	219	0.08	5.46	880	< 1	1.14	< 10	< 2	< 5	169	0.07	104	< 10	42	214	348	46
01-079-111	1388 276	119	0.09	4.44	755	< 1	1.38	40	< 2	< 5	199	0.06	75	< 10	42	438	461	44
01-079-112	1388 276	225	0.10	6.16	1020	< 1	1.03	10	< 2	< 5	146	0.08	106	< 10	52	209	342	52
01-079-113	1388 276	114	0.08	3.64	655	< 1	1.32	10	< 2	< 5	210	0.05	63	< 10	36	137	204	35
01-079-114	1388 276	145	0.08	3.86	680	< 1	1.34	< 10	< 2	< 5	216	0.05	68	< 10	34	208	257	35
01-079-115	1388 276	79	0.12	3.04	505	< 1	1.49	20	< 2	< 5	213	0.05	57	< 10	28	155	263	29
01-079-116	1388 226	14	0.68	0.76	200	1	2.84	320	12	< 5	594	0.11	27	< 10	30	98	28	10
01-079-117	1388 294	80	0.14	3.28	540	< 1	1.49	20	< 2	< 5	229	0.05	58	< 10	26	80	180	28
01-079-118	1388 276	81	0.11	3.55	565	< 1	1.52	20	< 2	< 5	236	0.05	56	< 10	26	73	196	29
01-079-119	1388 276	81	0.11	4.00	625	< 1	1.37	30	< 2	< 5	203	0.06	70	< 10	38	400	419	36
01-079-120	1388 276	83	0.11	4.67	655	< 1	1.35	20	< 2	< 5	203	0.05	70	< 10	38	77	240	37
01-079-STA-012	214 3285	138	0.23	6.26	910	< 1	1.10	10	10	< 5	183	0.07	97	< 10	52	1230	1400	69

CERTIFICATION: _____ +



ALS Chemex

Aurora Laboratory Services Ltd.
 Analytical Chemists * Geochemists * Registered Assayers
 5175 Timberlea Blvd., Mississauga
 Ontario, Canada L4W 2S3
 PHONE: 905-624-2806 FAX: 905-624-6163

To: LAC DES ILES MINES LTD.-EXPLORATION
 NORTH AMERICAN PALLADIUM
 P.O. BOX 10547
 THUNDER BAY, ON
 P7B 6T9

Page Number : 1-B
 Total Pages : 1
 Certificate Date: 13-NOV-2001
 Invoice No. : 10127914
 P.O. Number : 1000258
 Account : MZI

Project : #1033-01-079
 Comments: ATTN: MOE LAVIGNE

CERTIFICATE OF ANALYSIS A0127914

SAMPLE	PREP CODE	Cr ppm (ICP)	K % (ICP)	Mg % (ICP)	Mn ppm (ICP)	Mo ppm (ICP)	Na % (ICP)	P ppm (ICP)	Pb ppm (ICP)	Sb ppm (ICP)	Sr ppm (ICP)	Ti % (ICP)	V ppm (ICP)	W ppm (ICP)	Zn ppm (ICP)	Cu ppm (ICP)	Ni ppm (ICP)	Co ppm (ICP)
01-079-121	1388 276	92	0.14	5.02	715	< 1	1.30	30	< 2	< 5	203	0.05	78	< 10	36	101	275	40
01-079-122	1388 276	72	0.24	4.77	720	< 1	1.44	40	< 2	< 5	181	0.06	78	< 10	34	62	241	37
01-079-123	1388 276	86	0.34	4.69	715	< 1	1.47	40	< 2	< 5	203	0.06	72	< 10	36	122	300	39
01-079-124	1388 276	66	0.28	4.44	630	< 1	1.33	20	< 2	< 5	189	0.05	70	< 10	32	106	307	36
01-079-125	1388 276	66	0.32	5.07	755	< 1	1.52	40	< 2	< 5	218	0.06	88	< 10	36	276	442	43
01-079-126	1388 276	56	0.35	3.88	635	< 1	1.73	30	< 2	< 5	226	0.06	68	< 10	36	108	273	35
01-079-STA-015	2148285	-----																

CERTIFICATION: _____ +



ALS Chemex

Aurora Laboratory Services Ltd.
 Analytical Chemists * Geochemists * Registered Assayers
 5175 Timberlea Blvd., Mississauga
 Ontario, Canada L4W 2S3
 PHONE: 905-624-2806 FAX: 905-624-6163

To: LAC DES ILES MINES LTD.-EXPLORATION
 NORTH AMERICAN PALLADIUM
 P.O. BOX 10547
 THUNDER BAY, ON
 P7B 6T9

Page Number :1-B
 Total Pages :1
 Certificate Date: 12-NOV-2001
 Invoice No. :I0128037
 P.O. Number :1000259
 Account :MZI

Project : #1033-01-079
 Comments: ATTN: MOE LAVIGNE

CERTIFICATE OF ANALYSIS A0128037

SAMPLE	PREP CODE	Cr ppm (ICP)	K % (ICP)	Mg % (ICP)	Mn ppm (ICP)	Mo ppm (ICP)	Na % (ICP)	P ppm (ICP)	Pb ppm (ICP)	Sb ppm (ICP)	Sr ppm (ICP)	Ti % (ICP)	V ppm (ICP)	W ppm (ICP)	Zn ppm (ICP)	Cu ppm (ICP)	Ni ppm (ICP)	Co ppm (ICP)
01-079-127	1388 276	23	0.24	3.66	700	< 1	2.14	70	2	< 5	236	0.06	56	10	50	187	268	35
01-079-128	1388 276	18	0.32	1.77	365	1	3.19	50	2	< 5	488	0.06	28	< 10	42	63	63	18
01-079-129	1388 276	19	0.12	1.21	270	< 1	3.43	60	8	< 5	596	0.08	30	< 10	38	38	31	15
01-079-130	1388 276	21	0.16	0.48	160	2	3.28	40	4	< 5	450	0.07	16	< 10	26	69	59	10
01-079-131	1388 276	22	0.17	0.61	185	2	3.21	50	4	< 5	479	0.08	20	< 10	28	52	42	9
01-079-132	1388 276	15	0.18	0.93	205	1	3.41	50	2	< 5	514	0.07	21	< 10	34	22	22	11
01-079-133	1388 276	16	0.25	1.02	225	1	3.60	40	6	< 5	506	0.07	23	< 10	38	44	43	13
01-079-134	1388 276	15	0.20	1.05	235	1	3.69	40	< 2	< 5	530	0.06	24	< 10	36	93	30	14
01-079-135	1388 276	17	0.25	0.95	230	1	3.35	20	6	< 5	473	0.05	21	< 10	32	64	22	12
01-079-136	1388 276	15	0.33	0.99	205	1	3.30	40	< 2	< 5	429	0.05	20	< 10	32	30	20	12
01-079-137	1388 276	16	0.31	0.85	180	1	3.12	40	< 2	< 5	419	0.05	17	< 10	30	34	17	11
01-079-138	1388 276	21	0.65	1.10	200	< 1	3.58	30	< 2	< 5	486	0.06	20	< 10	32	51	23	12
01-079-139	1388 276	44	0.38	0.97	210	3	3.43	50	< 2	< 5	492	0.06	21	< 10	28	58	27	12
01-079-140	1388 276	18	0.24	0.96	230	4	3.45	70	6	< 5	555	0.07	22	< 10	28	34	24	11
01-079-141	1388 276	16	0.25	0.93	220	1	3.44	60	6	< 5	528	0.07	22	< 10	26	49	29	10
01-079-142	1388 276	12	0.19	0.91	215	1	3.38	70	8	< 5	533	0.07	23	< 10	26	51	30	11
01-079-143	1388 276	13	0.42	1.08	275	< 1	3.39	90	6	< 5	462	0.08	26	< 10	28	37	23	15
01-079-144	1388 276	181	0.04	6.44	1215	< 1	1.00	190	< 2	< 5	355	0.12	126	10	58	260	369	56
01-079-145	1388 276	263	0.19	7.84	1335	< 1	1.38	270	< 2	< 5	177	0.12	127	< 10	66	61	338	60
01-079-146	1388 276	348	0.29	7.32	1255	3	1.25	430	< 2	< 5	190	0.15	128	< 10	62	117	297	57
01-079-147	1388 276	201	0.17	8.33	1200	< 1	0.58	30	< 2	< 5	109	0.09	120	< 10	76	218	415	69
01-079-148	1388 276	144	0.22	6.79	1185	1	1.12	30	< 2	< 5	183	0.09	129	< 10	74	624	527	77
01-079-149	1388 276	187	0.18	7.48	1060	1	1.11	10	< 2	< 5	185	0.10	107	< 10	64	483	462	67
01-079-150	1388 276	175	0.12	7.92	1315	< 1	0.85	10	< 2	< 5	140	0.10	134	< 10	84	278	491	71
01-079-151	1388 276	132	0.12	6.50	1180	< 1	1.08	10	2	< 5	171	0.11	140	< 10	70	243	388	63
01-079-152	1388 276	103	0.18	4.93	920	1	1.57	< 10	2	< 5	211	0.07	99	< 10	54	169	257	47
01-079-153	1388 276	153	0.21	5.25	805	< 1	1.32	20	< 2	< 5	220	0.09	94	< 10	46	103	240	44
01-079-154	1388 276	112	0.15	6.05	1180	1	1.29	10	< 2	< 5	201	0.09	125	< 10	66	312	377	62
01-079-155	1388 276	184	0.23	6.37	930	1	1.23	< 10	< 2	< 5	192	0.07	89	< 10	50	328	418	52
01-079-156	1388 276	174	0.16	6.72	1275	2	1.13	40	< 2	< 5	178	0.11	138	10	76	221	400	64
01-079-157	1388 276	230	0.16	8.09	1460	< 1	0.75	20	2	< 5	122	0.10	146	< 10	88	588	987	98
01-079-158	1388 276	167	0.13	6.42	965	< 1	1.19	30	< 2	< 5	192	0.08	94	10	52	180	344	53
01-079-159	1388 276	161	0.14	6.01	905	1	1.21	< 10	2	< 5	191	0.07	93	< 10	52	197	331	53
01-079-STA-016	2148285	121	0.24	6.57	875	< 1	1.14	10	2	< 5	169	0.06	97	< 10	50	1170	1265	62

CERTIFICATION: _____ +



ALS Chemex

Aurora Laboratory Services Ltd.

Analytical Chemists * Geochemists * Registered Assayers

5175 Timberlea Blvd., Mississauga
 Ontario, Canada L4W 2S3
 PHONE: 905-624-2806 FAX: 905-624-6163

To: LAC DES ILES MINES LTD.-EXPLORATION
 NORTH AMERICAN PALLADIUM
 P.O. BOX 10547
 THUNDER BAY, ON
 P7B 6T9

Page Number :1-B
 Total Pages :2
 Certificate Date: 14-NOV-2001
 Invoice No. :I0128158
 P.O. Number :1000262
 Account :MZI

Project : #1033-01-079
 Comments: ATTN: MOE LAVIGNE

CERTIFICATE OF ANALYSIS A0128158

SAMPLE	PREP CODE	Cr ppm (ICP)	K % (ICP)	Mg % (ICP)	Mn ppm (ICP)	Mo ppm (ICP)	Na % (ICP)	P ppm (ICP)	Pb ppm (ICP)	Sb ppm (ICP)	Sr ppm (ICP)	Ti % (ICP)	V ppm (ICP)	W ppm (ICP)	Zn ppm (ICP)	Cu ppm (ICP)	Ni ppm (ICP)	Co ppm (ICP)
01-079-160	1388 276	153	0.27	5.72	875	< 1	1.26	30	< 2	< 5	218	0.07	83	< 10	46	167	339	50
01-079-161	1388 276	135	0.13	5.66	1055	< 1	1.29	10	2	< 5	221	0.09	111	< 10	72	204	359	59
01-079-162	1388 276	180	0.16	7.15	1420	< 1	1.08	< 10	< 2	< 5	168	0.09	126	< 10	78	236	394	71
01-079-163	1388 276	187	0.14	6.55	1225	< 1	1.32	< 10	8	< 5	196	0.08	110	< 10	82	127	294	60
01-079-164	1388 276	135	0.29	4.53	785	< 1	1.58	< 10	< 2	< 5	260	0.05	65	< 10	36	115	233	39
01-079-165	1388 276	101	0.17	2.40	485	16	0.53	< 10	2	< 5	56	0.04	47	< 10	36	122	143	30
01-079-166	1388 276	19	0.03	0.39	130	5	0.13	< 10	< 2	< 5	25	< 0.01	8	< 10	6	16	28	6
01-079-167	1388 276	87	0.37	4.39	920	< 1	1.63	< 10	< 2	< 5	251	0.06	97	< 10	56	344	307	50
01-079-168	1388 276	61	0.28	3.89	940	< 1	1.69	< 10	44	< 5	253	0.07	110	< 10	120	454	213	65
01-079-169	1388 276	120	0.27	4.68	995	< 1	1.51	< 10	< 2	< 5	245	0.07	101	< 10	58	324	309	63
01-079-170	1388 276	93	0.15	4.36	950	< 1	1.51	< 10	< 2	< 5	232	0.07	100	< 10	46	127	190	52
01-079-171	1388 276	90	0.15	4.53	980	< 1	1.47	< 10	< 2	< 5	230	0.07	96	< 10	46	151	206	57
01-079-172	1388 276	85	0.13	4.69	970	< 1	1.57	< 10	< 2	< 5	232	0.07	93	< 10	44	157	309	53
01-079-173	1388 276	117	0.14	4.82	950	< 1	1.43	< 10	< 2	< 5	215	0.07	95	< 10	44	308	463	62
01-079-174	1388 276	89	0.13	4.49	890	< 1	1.52	< 10	< 2	< 5	219	0.07	92	< 10	42	393	519	61
01-079-175	1388 276	65	0.13	4.26	960	< 1	1.55	< 10	< 2	< 5	235	0.07	105	< 10	48	265	262	52
01-079-176	1388 276	85	0.11	4.66	940	< 1	1.51	< 10	< 2	< 5	224	0.07	95	< 10	48	139	204	50
01-079-177	1388 276	103	0.14	5.01	910	< 1	1.43	< 10	< 2	< 5	224	0.07	86	< 10	48	146	243	50
01-079-178	1388 276	98	0.17	4.56	915	< 1	1.54	< 10	< 2	< 5	218	0.07	86	< 10	44	178	255	47
01-079-179	1388 276	83	0.15	4.74	1060	< 1	1.52	< 10	< 2	< 5	218	0.07	104	< 10	54	99	200	50
01-079-180	1388 276	100	0.23	4.43	895	< 1	1.31	< 10	< 2	< 5	196	0.07	85	< 10	44	100	202	44
01-079-181	1388 276	147	0.50	4.98	905	< 1	1.29	10	< 2	< 5	212	0.07	83	< 10	46	229	350	55
01-079-182	1388 276	186	0.45	4.92	855	< 1	1.43	< 10	< 2	< 5	251	0.06	77	< 10	46	58	202	42
01-079-183	1388 276	138	0.41	4.84	865	< 1	1.44	< 10	< 2	< 5	247	0.06	74	< 10	38	76	217	42
01-079-184	1388 276	104	0.38	4.41	885	< 1	1.63	< 10	< 2	< 5	255	0.07	83	< 10	40	85	202	41
01-079-185	1388 276	132	0.64	4.24	700	< 1	1.57	< 10	< 2	< 5	261	0.06	68	< 10	34	89	226	38
01-079-186	1388 276	94	0.44	3.25	595	< 1	2.23	510	6	< 5	389	0.20	79	< 10	44	83	143	50
01-079-187	1388 276	141	0.26	5.50	1015	< 1	1.28	< 10	< 2	< 5	228	0.07	85	< 10	48	114	258	49
01-079-188	1388 276	110	0.19	4.69	910	< 1	1.37	< 10	< 2	< 5	240	0.07	88	< 10	46	206	322	53
01-079-189	1388 276	104	0.22	5.02	970	< 1	1.26	< 10	< 2	< 5	222	0.08	99	< 10	46	311	330	54
01-079-190	1388 276	104	0.17	3.95	795	< 1	1.77	80	< 2	< 5	268	0.10	83	< 10	40	120	192	42
01-079-191	1388 276	199	0.22	5.51	950	1	1.56	< 10	< 2	< 5	259	0.08	102	< 10	46	303	511	58
01-079-192	1388 276	97	0.34	4.26	1015	< 1	1.77	260	< 2	< 5	305	0.23	121	< 10	58	201	240	49
01-079-193	1388 276	108	0.14	4.28	735	< 1	1.62	< 10	< 2	< 5	247	0.06	71	< 10	36	108	201	39
01-079-194	1388 276	130	0.11	4.73	820	< 1	1.57	< 10	< 2	< 5	262	0.07	80	< 10	38	128	219	43
01-079-195	1388 276	106	0.14	4.10	720	1	1.58	< 10	< 2	< 5	244	0.05	68	< 10	34	84	178	37
01-079-196	1388 276	117	0.30	4.82	895	< 1	1.72	< 10	< 2	< 5	278	0.06	82	< 10	42	137	233	45
01-079-197	1388 276	82	0.19	3.73	750	< 1	1.75	< 10	< 2	< 5	293	0.06	78	< 10	32	131	175	40
01-079-198	1388 276	99	0.17	4.14	765	< 1	1.74	< 10	< 2	< 5	287	0.06	77	< 10	28	162	184	39
01-079-199	1388 276	129	0.22	4.75	855	< 1	1.68	< 10	< 2	< 5	280	0.07	82	< 10	34	329	354	50

CERTIFICATION: _____ +



ALS Chemex

Aurora Laboratory Services Ltd.
 Analytical Chemists * Geochemists * Registered Assayers
 5175 Timberlea Blvd., Mississauga
 Ontario, Canada L4W 2S3
 PHONE: 905-624-2806 FAX: 905-624-6163

To: LAC DES ILES MINES LTD.-EXPLORATION
 NORTH AMERICAN PALLADIUM
 P.O. BOX 10547
 THUNDER BAY, ON
 P7B 6T9

Page Number : 2-A
 Total Pages : 2
 Certificate Date: 14-NOV-2001
 Invoice No. : 10128158
 P.O. Number : 1000262
 Account : MZI

Project : #1033-01-079
 Comments: ATTN: MOE LAVIGNE

CERTIFICATE OF ANALYSIS

A0128158

SAMPLE	PREP		Pd ppb	Pt ppb	Au ppb	Al2O3	Fe2O3	MgO	Cu %	Ni %	Co %	Fe %	S %	Ag ppm	Al %	As ppm	Ba ppm	Be ppm	Bi ppm	Ca %	Cd ppm
	CODE		ICP-MS	ICP-MS	ICP-MS	% Calc	% Calc	% Calc	calc.	calc.	calc.	(ICP)	(ICP)	(ICP)	(ICP)	(ICP)	(ICP)	(ICP)	(ICP)	(ICP)	(ICP)
01-079-200	1388	276	2100	234	100	17.35	8.16	9.32	0.0874	0.0764	0.0065	5.71	0.33	< 0.5	9.18	< 5	50	< 0.5	< 2	6.9	< 0.5
01-079-201	1388	276	850	100.0	46	17.60	7.09	8.57	0.0368	0.0488	0.0054	4.96	0.13	< 0.5	9.31	< 5	60	< 0.5	< 2	6.4	< 0.5
01-079-STA-019	2143	285	2900	259	340	16.25	7.12	10.90	0.1330	0.1440	0.0068	4.98	0.35	< 0.5	8.60	15	50	< 0.5	< 2	6.1	< 0.5

CERTIFICATION: _____ +



ALS Chemex

Aurora Laboratory Services Ltd.
 Analytical Chemists * Geochemists * Registered Assayers
 5175 Timberlea Blvd., Mississauga
 Ontario, Canada L4W 2S3
 PHONE: 905-624-2806 FAX: 905-624-6163

To: LAC DES ILES MINES LTD.-EXPLORATION
 NORTH AMERICAN PALLADIUM
 P.O. BOX 10547
 THUNDER BAY, ON
 P7B 6T9

Page Number :1-B
 Total Pages :1
 Certificate Date: 19-NOV-2001
 Invoice No. :10128288
 P.O. Number :1000263
 Account :MZI

Project : #1033-01-079
 Comments: ATTN: MOE LAVIGNE

CERTIFICATE OF ANALYSIS A0128288

SAMPLE	PREP CODE		Cr ppm	K %	Mg %	Mn ppm	Mo ppm	Na %	P ppm	Pb ppm	Sb ppm	Sr ppm	Ti %	V ppm	W ppm	Zn ppm	Cu ppm	Ni ppm	Co ppm
			(ICP)	(ICP)	(ICP)	(ICP)	(ICP)	(ICP)	(ICP)	(ICP)	(ICP)	(ICP)	(ICP)	(ICP)	(ICP)	(ICP)	(ICP)	(ICP)	(ICP)
01-079-202	1388	294	130	0.30	4.25	735	1	1.91	< 10	4	< 5	274	0.05	72	< 10	30	85	328	40
01-079-203	1388	294	154	0.27	4.56	805	< 1	1.72	< 10	6	< 5	245	0.05	72	< 10	30	125	376	45
01-079-204	1388	276	148	0.78	4.64	820	< 1	1.65	< 10	< 2	< 5	243	0.06	75	< 10	30	115	286	46
01-079-205	1388	276	138	0.22	4.93	885	< 1	1.59	< 10	4	< 5	242	0.06	85	< 10	38	229	332	47
01-079-206	1388	276	131	0.19	5.65	1205	< 1	1.06	< 10	10	< 5	173	0.16	180	< 10	78	1045	956	78
01-079-207	1388	294	267	0.06	8.57	1740	< 1	0.28	30	12	< 5	50	0.13	163	< 10	92	1905	1440	114
01-079-208	1388	294	233	0.17	7.98	1645	< 1	0.58	30	2	< 5	96	0.13	153	< 10	64	1685	1540	115
01-079-209	1388	276	310	0.04	9.30	1865	< 1	0.20	40	2	< 5	39	0.15	185	< 10	78	2570	1845	130
01-079-210	--	--	NotRed	NotRed	NotRed	NotRed	NotRed	NotRed	NotRed	NotRed	NotRed	NotRed	NotRed	NotRed	NotRed	NotRed	NotRed	NotRed	NotRed
01-079-211	1388	294	234	0.25	7.29	1485	< 1	0.62	80	26	< 5	114	0.16	191	< 10	70	2600	1170	94
01-079-212	1388	294	214	0.57	7.20	1395	< 1	1.07	10	202	< 5	164	0.10	124	< 10	288	1235	1140	90
01-079-213	1388	294	215	0.07	6.78	1185	1	0.50	70	6	< 5	74	0.11	130	< 10	68	1300	976	88
01-079-214	1388	294	322	0.19	6.00	1065	< 1	1.76	750	18	< 5	371	0.27	154	< 10	76	1115	1225	91
01-079-215	1388	276	142	0.22	6.00	1075	< 1	1.49	10	8	< 5	229	0.08	111	< 10	46	489	548	59
01-079-216	1388	276	108	0.10	5.32	920	< 1	1.45	< 10	4	< 5	239	0.06	93	< 10	42	374	370	52
01-079-217	1388	294	112	0.12	5.27	910	< 1	1.50	10	2	< 5	232	0.06	91	< 10	36	376	364	52
01-079-218	1388	294	226	0.12	7.60	1485	< 1	0.52	< 10	< 2	< 5	70	0.10	147	< 10	70	2650	1950	136
01-079-219	1388	276	86	0.14	4.83	835	< 1	1.61	< 10	6	< 5	245	0.06	82	< 10	34	298	294	46
01-079-220	1388	276	120	0.10	5.05	880	< 1	1.44	< 10	< 2	< 5	233	0.06	82	< 10	34	388	489	53
01-079-221	1388	276	174	0.11	5.15	825	< 1	1.47	10	< 2	< 5	229	0.05	76	< 10	38	401	462	51
01-079-222	1388	276	116	0.15	4.65	880	< 1	1.55	30	6	< 5	249	0.10	105	< 10	40	688	561	51
01-079-223	1388	276	140	0.12	5.01	915	< 1	1.46	< 10	< 2	< 5	219	0.06	97	< 10	42	724	582	53
01-079-224	1388	276	102	0.09	4.81	925	< 1	1.51	< 10	56	< 5	213	0.09	109	< 10	122	672	582	59
01-079-225	1388	276	66	0.13	3.57	665	< 1	1.81	< 10	2	< 5	285	0.05	60	< 10	36	511	457	43
01-079-226	1388	276	115	0.12	5.90	1075	1	1.06	< 10	8	< 5	156	0.08	114	< 10	50	1180	991	76
01-079-227	1388	276	117	0.10	5.51	950	< 1	1.33	10	2	< 5	208	0.07	98	< 10	44	997	919	66
01-079-228	1388	276	105	0.12	4.66	810	3	1.43	< 10	12	< 5	237	0.06	79	< 10	48	453	436	47
01-079-STA-020	2143	285	127	0.21	5.89	820	< 1	1.08	20	6	< 5	166	0.06	85	< 10	44	1085	1270	59

CERTIFICATION: _____ +

Date: 2004-SEP-09

GEOSCIENCE ASSESSMENT OFFICE
933 RAMSEY LAKE ROAD, 6th FLOOR
SUDBURY, ONTARIO
P3E 6B5

LAC DES ILES MINES LTD.
710 NORAH CRES
THUNDER BAY, ONTARIO
P7C 4T8 CANADA

Tel: (888) 415-9845
Fax: (877) 670-1555

Submission Number: 2.24442
Transaction Number(s): W0240.01986

Dear Sir or Madam

Subject: Deemed Approval of Assessment Work

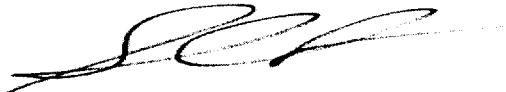
We have approved your Assessment Work Submission with the above noted Transaction Number(s) as per 6(7) of the Assessment Work Regulation. Only eligible assessment work is deemed approved for assessment work credit. The attached Work Report Summary indicates the results of the approval.

NOTE: The report has not been reviewed for technical deficiencies and reported expenses were not evaluated based on the Industry Standard.

At the discretion of the Ministry, the assessment work performed on the mining lands noted in this work report may be subject to inspection and/or investigation at any time.

If you have any question regarding this correspondence, please contact STEVEN BENETEAU by email at steve.beneteau@ndm.gov.on.ca or by phone at (705) 670-5855.

Yours Sincerely,



Sheila Lessard
Senior Manager(A), Mining Lands Section

Cc: Resident Geologist

Paul Erik Nielsen
(Agent)

Lac Des Iles Mines Ltd.
(Assessment Office)

Assessment File Library

Lac Des Iles Mines Ltd.
(Claim Holder)

Date / Time of Issue: Thu Oct 21 10:55:24 EDT 2004

TOWNSHIP / AREA
LAC DES ILES AREA

PLAN
G-0739

ADMINISTRATIVE DISTRICTS / DIVISIONS

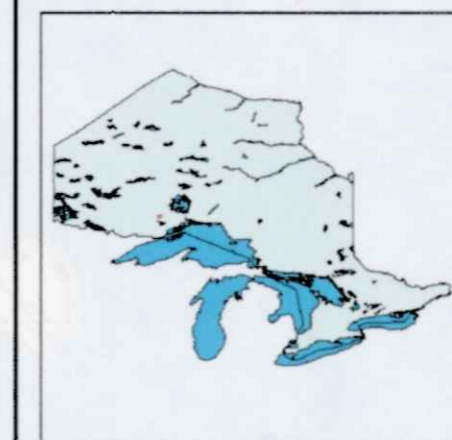
Mining Division Thunder Bay
Land Titles/Registry Division THUNDER BAY
Ministry of Natural Resources District THUNDER BAY

TOPOGRAPHIC

- Administrative Boundaries
- Township
- Concession Lot
- Provincial Park
- Indian Reserve
- Cliff, Pit & Pile
- Contour
- Mine Shafts
- Mine Headframe
- Railway
- Road
- Trail
- Natural Gas Pipeline
- Utilities
- Tower

Land Tenure

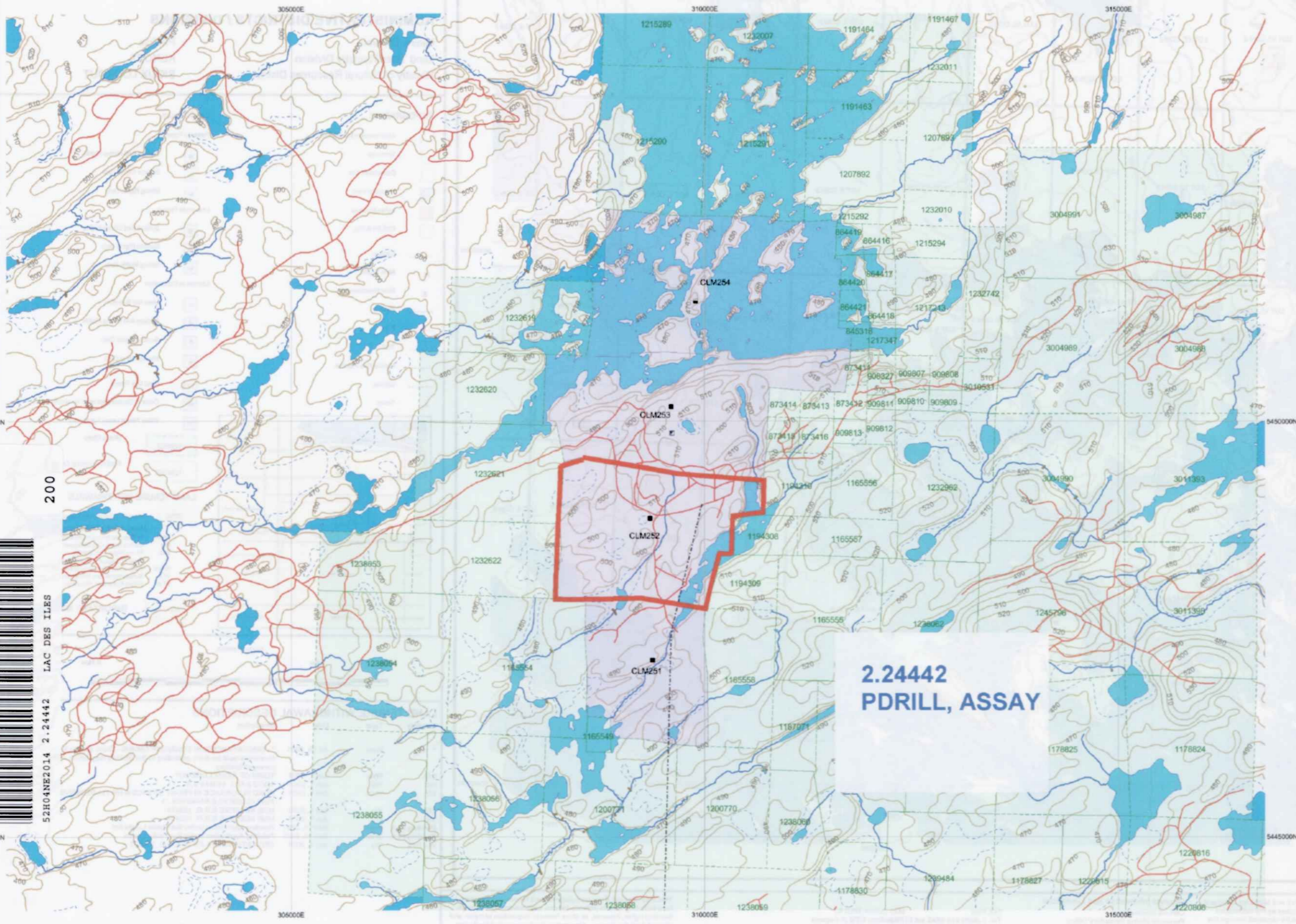
- Freehold Patent**
 - Surface And Mining Rights
 - Surface Rights Only
 - Mining Rights Only
- Leasehold Patent**
 - Surface And Mining Rights
 - Surface Rights Only
 - Mining Rights Only
- Licence of Occupation**
 - Uses Not Specified
 - Surface And Mining Rights
 - Surface Rights Only
 - Mining Rights Only
 - Land Use Permit
 - Order in Council (Not open for staking)
 - Water Power Lease Agreement
- Mining Claim**
 - Mining Claim
 - Filled Only Mining Claims



LAND TENURE WITHDRAWALS

- Areas Withdrawn from Disposition
- Mining Acts Withdrawal Types**
 - Surface And Mining Rights Withdrawn
 - Surface Rights Only Withdrawn
 - Mining Rights Only Withdrawn
- Order in Council Withdrawal Types**
 - Surface And Mining Rights Withdrawn
 - Surface Rights Only Withdrawn
 - Mining Rights Only Withdrawn
- No

IMPORTANT NOTICES



UTM Zone 18
5000m grid

Those wishing to stake mining claims should consult with the Provincial Mining Recorders' Office of the Ministry of Northern Development and Mines for additional information on the status of the lands shown hereon. This map is not intended for navigational, survey, or land title determination purposes as the information shown on this map is compiled from various sources. Completeness and accuracy are not guaranteed. Additional information may also be obtained through the local Land Titles or Registry Office, or the Ministry of Natural Resources.

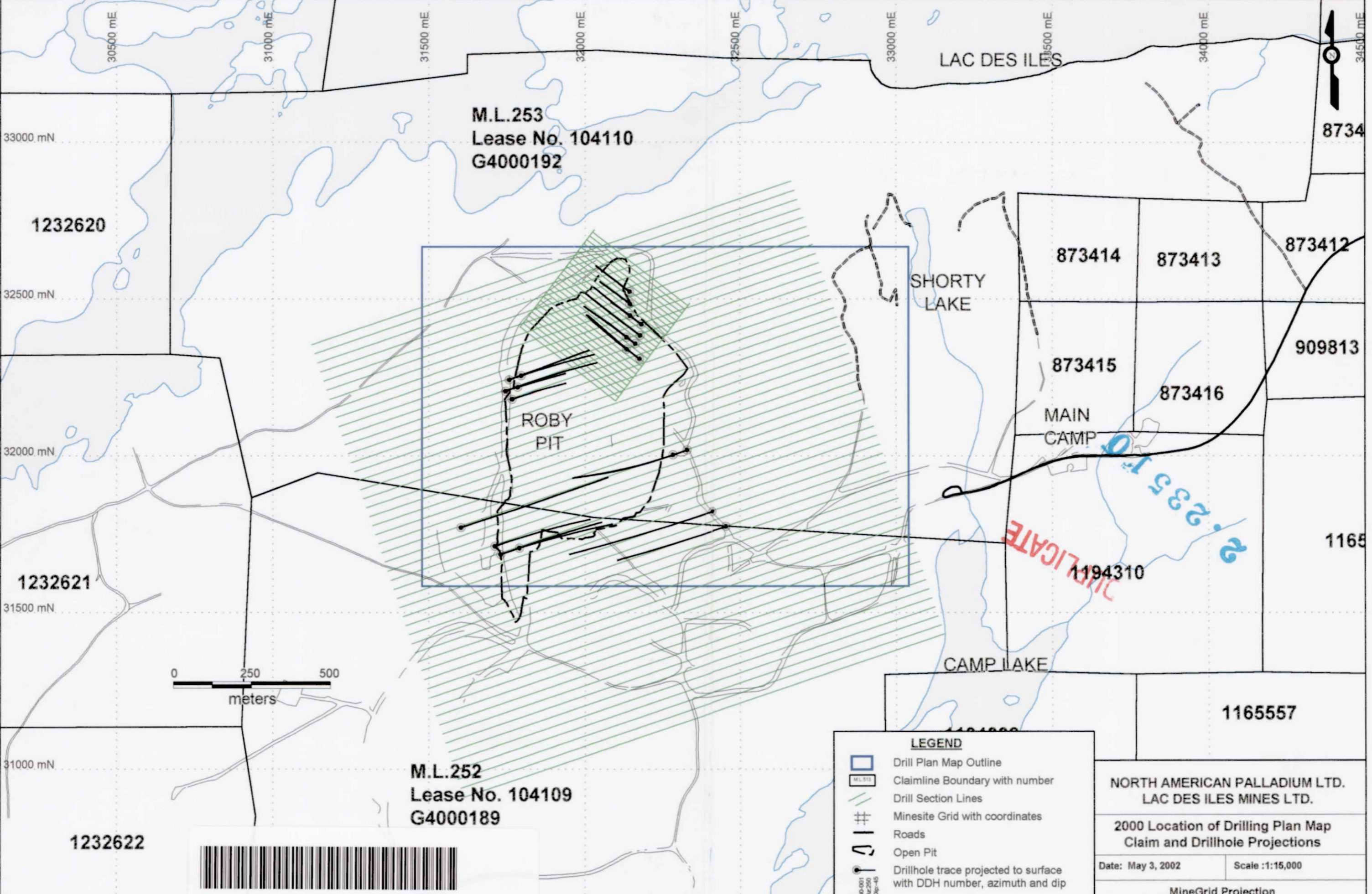
The information shown is derived from digital data available in the Provincial Mining Recorders' Office at the time of downloading from the Ministry of Northern Development and Mines web site.

General Information and Limitations
 Contact Information:
 Provincial Mining Recorders' Office
 Willet Green Miller Centre 933 Ramsey Lake Road
 Sudbury ON P3E 0B5
 Home Page: www.mndm.gov.on.ca/MNDM/MINESLANDS/mimnppge.htm

Toll Free
 Tel: 1 (888) 415-9845 ext 57
 Fax: 1 (877) 670-1444

Map Datum: NAD 83
 Projection: UTM (6 degree)
 Topographic Data Source: Land Information Ontario
 Mining Land Tenure Source: Provincial Mining Recorders' Office

This map may not show unregistered land tenure and interests in land including certain patents, leases, easements, right of ways, flooding rights, licences, or other forms of disposition of rights and interest from the Crown. Also certain land tenure and land uses that restrict or prohibit free entry to stake mining claims may not be illustrated.



52H04NE2014 2.24442 LAC DES ILES

LEGEND

- Drill Plan Map Outline
- Claimline Boundary with number
- Drill Section Lines
- Minesite Grid with coordinates
- Roads
- Open Pit
- Drillhole trace projected to surface with DDH number, azimuth and dip

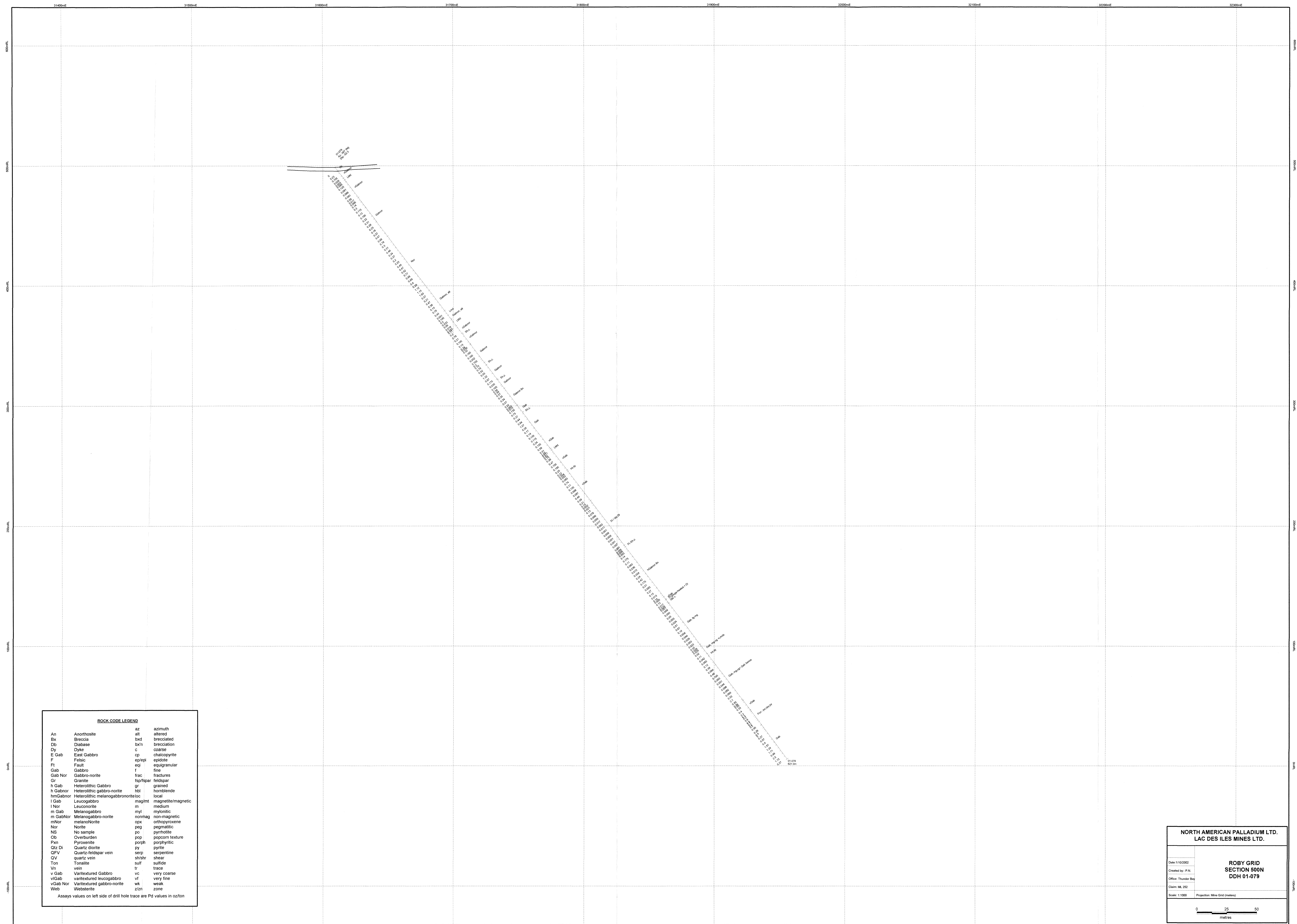
00-001
Az 250
Dip -45

**NORTH AMERICAN PALLADIUM LTD.
LAC DES ILES MINES LTD.**

**2000 Location of Drilling Plan Map
Claim and Drillhole Projections**

Date: May 3, 2002 Scale :1:15,000

MineGrid Projection



ROCK CODE LEGEND

An	Anorthosite	az	azimuth
Bx	Breccia	alt	altered
Db	Diabase	bwd	brecciated
Dy	Dyke	bx'n	brecciation
E Gab	East Gabbro	c	coarse
F	Felsic	cp	chalcopyrite
Ft	Fault	ep/epi	epidote
Gab	Gabbro	eqi	equigranular
Gab Nor	Gabbro-norite	f	fine
Gr	Granite	frac	fractures
h Gab	Heterolithic Gabbro	fsp/spar	feldspar
h Gabnor	Heterolithic gabbro-norite	gr	granoid
hmGabnor	Heterolithic melanogabbro-norite	hbl	hornblende
I Gab	Leucogabbro	loc	local
I Nor	Leuconorite	mag/mt	magnetite/magnetic
m Gab	Melanogabbro	m	medium
m GabNor	Melanogabbro-norite	myl	mylonitic
mNor	melanoNorite	nomag	non-magnetic
Nor	Norite	opx	orthopyroxene
NS	No sample	peg	pegmatitic
Ob	Overburden	po	pyrrhotite
Pxn	Pyroxenite	pop	popcorn texture
Qtz Di	Quartz diorite	porph	porphyritic
QFV	Quartz-feldspar vein	py	pyrite
QV	quartz vein	serp	serpentine
Ton	Tonalite	sh/shr	shear
Vn	vein	sulf	sulfide
v Gab	Varitextured Gabbro	tr	trace
vGab	varitextured leucogabbro	vc	very coarse
vGab Nor	Varitextured gabbro-norite	vf	very fine
Web	Websterite	wk	weak
		z/zn	zone

Assays values on left side of drill hole trace are Pd values in oz/ton

**NORTH AMERICAN PALLADIUM LTD.
LAC DES ILES MINES LTD.**

Date: 1/10/2002
 Created by: P.N.
 Office: Thunder Bay
 Query: M_002
 Scale: 1:1000 Projection: Mine Grid (meters)

**ROBY GRID
SECTION 500N
DDH 01-079**