

52110SW0034 19 LINKLATER LAKE

010

Diamond Drilling



Area Linklater Lake

Report NO 19

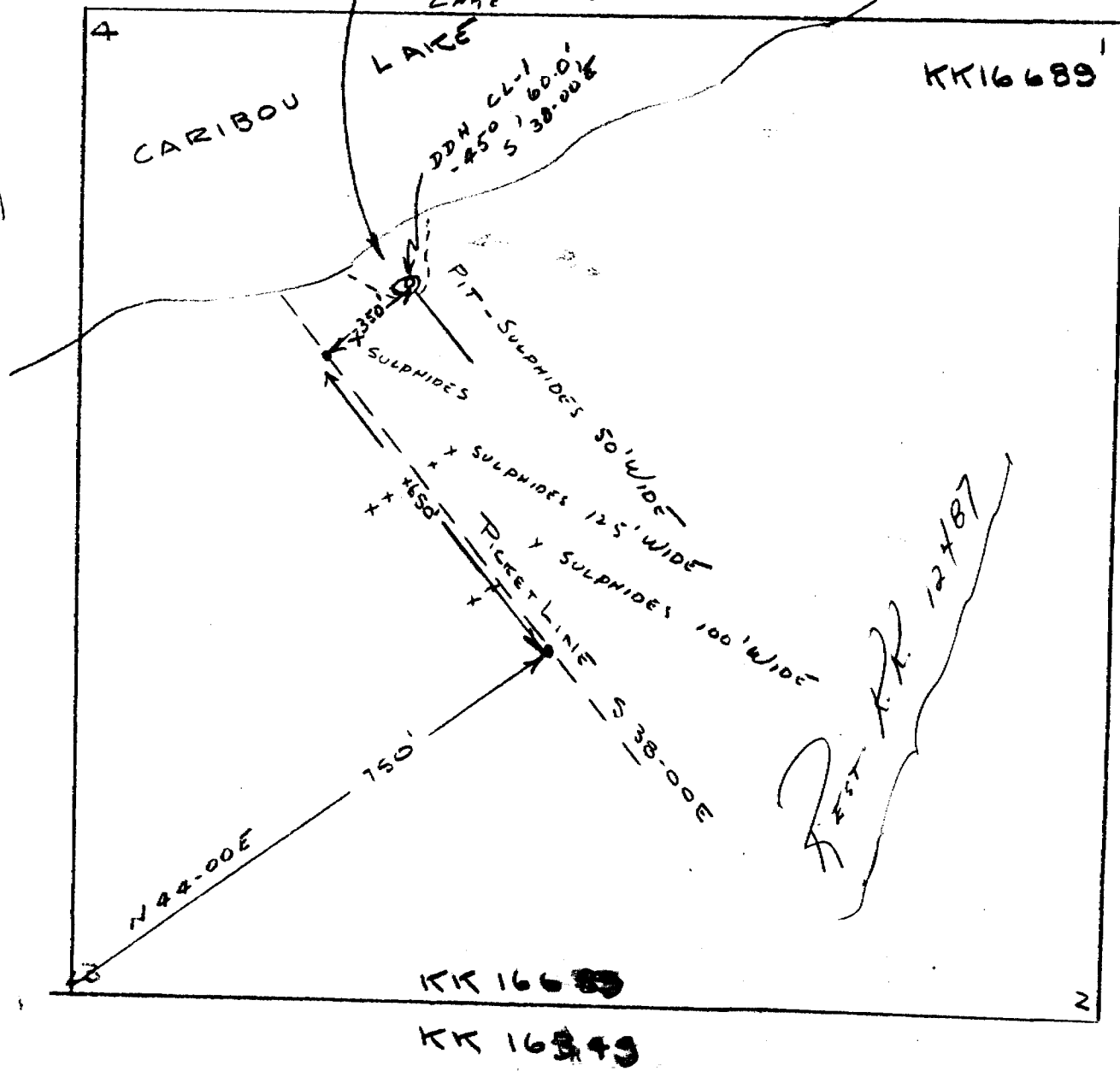
Work performed by: Lun Echo Gold Mines Ltd.

Claim NO	Hole NO	Footage	Date	Note
KK 12487	CL-1		date unknown 1958	

Notes:

115

ABOUT 150 TONS ROCK
BLASTED AND EXCAVATED
PLAINLY VISIBLE FROM THE
LAKE AND FROM THE AIR



KK16688

COMPLETED

MINE
PROPERTY

KK16689

KK16689

LEGEND
LEGEND

Handwritten signature

G3D
24 MAR 58

CORE ASSAYS 8-1-115

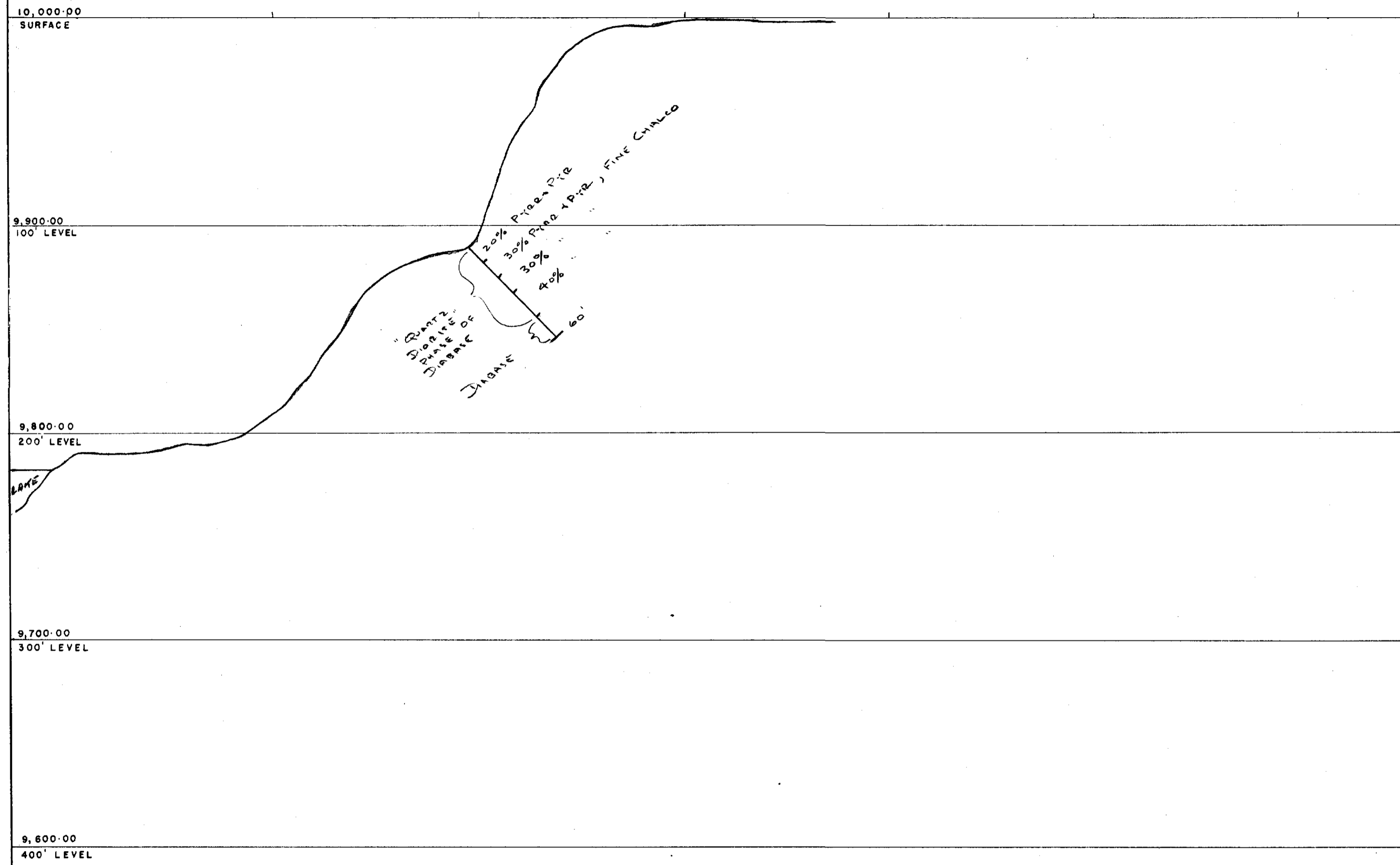
BEARING S38-00E →

SECTION

CORE LOG 8-1-115 HOLE NO. CL-1

SAMPLE	FROM	TO	%Cu	025 Au	025 Ag	DESCRIPTION
156	0	10.0	0.23	TR	TR	
157	10.0	20.0	0.10	TR	TR	
158	20.0	30.0	0.23	TR	TR	
159	30	43.0	0.16	TR	TR	

1/724
4/34



FROM	TO	DESCRIPTION
0	10.0	20% Pyrrhote + Pyrrite, Quartz Diorite, Some fracturing with later mineralization, minor fine Chalcopyrite
10.0	20.0	30% Pyrrh + Pyrr, Qtz Diorite, minor Chalco
20.0	30.0	30% " " " "
30.0	46.0	40% " " " "
46.0	60.0	DIABASE NO SULPHIDES
60.0	60.0	END

HOLE STARTED- 22 AUG 53 COMPLETED- 24 AUG 53 CONTRACTOR- LUN-ECHO

LEGEND

<input type="checkbox"/>	Qtz Diorite Phase
<input type="checkbox"/>	DIABASE
<input type="checkbox"/>	
<input type="checkbox"/>	
<input type="checkbox"/>	
<input type="checkbox"/>	
<input type="checkbox"/>	

MINE- LUN-ECHO GOLD MINES LTD
 PROPERTY- D. PACHEA OPTION, CARIBOU L.
 HOLE NO. CL-1 INCLINED -45° BEARING S38-00E
 COLLAR LOCATION- SEE SKETCH
 -INCLINATIONS-

LOGGED BY- G.B. DARLINT
 DRAWN BY - " "
 ASSAYS BY - SUBBURY ASSAY OFFICE
 SCALE 1" = 40'
 DATE - 24 MAR 58

