



52J02NE0113 52J02SE0037A1 BECKINGTON LAKE

010

SELCO EXPLORATION COMPANY LIMITED

GEOPHYSICAL REPORT

CLAIMS 200724, 200725, 200728, 200824 to 200928
200927, 200928 and 201038
PATRICIA MINING DIVISION.

August 1970.

SELCO EXPLORATION COMPANY LIMITED

CLAIMS 200724, 200725, 200728, 200824 TO 200828
200927, 200928, AND 201038
PATRICIA MINING DIVISION

This report describes results of a ground electromagnetic survey undertaken during April 1970 over eleven claims in the Sturgeon Lake area, Patricia Mining Division.

IN THE STURGEON LAKE AREA.

Location and Access

The claims are on Couture Lake, one mile east of the east shore of the North Bay of Sturgeon Lake. Access is by float- or ski-equipped aircraft landing on Couture Lake.

Description of Claims

The property consists of eleven contiguous unpatented mining claims, Nos. 200724, 200725, 200728, 200824 to 200828 inclusive 200927, 200928 and 201038.

Survey Procedure

The claims have been covered by a grid of control lines comprising a northerly trending baseline and easterly trending offsets at intervals of 400 feet, a total of 7.5 miles of lines.

Offsets have been picketed at intervals of 100 feet and ground electromagnetic readings have been taken along these lines at intervals of 100 feet.

The survey was performed by Geosearch Limited under contract to Selco Exploration Company Limited. The party chief was G. Dick, assisted by R. Lee, and the survey was undertaken between April 6 and April 10, 1970.

Electromagnetic Survey

The electromagnetic survey was performed using ABEM minigun horizontal loop electromagnetic equipment, measuring the in-phase and out of phase components of the secondary electromagnetic field. The frequency employed was 3520 cycles per second and the separation between coils was 200 feet. The readings have been plotted on an accompanying plan, No. 70-41.

Results

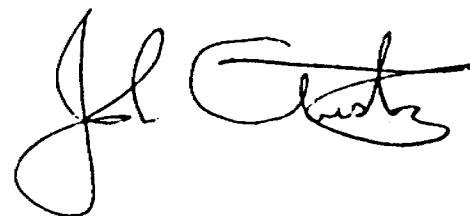
The electromagnetic survey has detected only one definite conductor axis on line 52 North in the northwest portion of the grid. The peak in-phase response there is minus 20 percent and the peak out of phase is minus 7 percent, giving a ratio of approximately three to one.

An indefinite conductor axis has been outlined 600 feet east of the previous conductor and extending from line 52 North to line 56 North.

Causes of these conductors are unknown.

J.S. Auston, P.Eng., Ontario.

Toronto, August 20, 1970.

A handwritten signature in cursive script, appearing to read 'J.S. Auston', is located in the bottom right corner of the page.

AREA CODE — 416
TELEPHONE — 365-6918



2.19

WHITNEY BLOCK
QUEEN'S PARK
TORONTO 182 ONT

DEPARTMENT OF MINES AND NORTHERN AFFAIRS
MINING LANDS BRANCH



52J02NE0113 52J02SE0037A1 BECKINGTON LAKE

January 18th, 1971.

900

Mr. W. A. Buchan,
Mining Recorder,
Court House,
Sioux Lookout, Ontario.

Re: Mining Claim No. PA. 200724 et al,
Squaw Lake and Beckington Lake Areas

Dear Sir:

The Geophysical (Electromagnetic) assessment work credits as shown on the attached list have been approved as of the date above. Please inform the recorded holder and so indicate on your records.

Yours very truly,

A handwritten signature in cursive script, appearing to read "Fred W. Matthews".

Fred W. Matthews,
Supervisor,
Projects Section.

c.c. Selco Exploration Co., Ltd.,
1201 - 121 Richmond St. West,
Toronto 110, Ontario.

c.c. Mr. H. L. King,
Resident Geologist,
808 Robertson Street,
Kenora, Ontario. ✓

FWM/mr



TECHNICAL ASSESSMENT WORK CREDITS

Recorder Holder Selco Exploration Company Limited.....

Township or Area Squaw Lake and Beckington Lake Areas.....

Type of Survey and number of Assessment Days Credits per claim

GEOPHYSICAL Airborne Ground

Magnetometerdays

Electromagnetic 40days

Radiometricdays

.....days

GEOLOGICAL.....days

GEOCHEMICAL.....days

SECTION 84 (14).....days

Special Provision Man days

NOTICE OF INTENT TO BE ISSUED

Credits have been reduced because of partial coverage of claims.

Credits have been reduced because of corrections to work dates and figures of applicant.

NO CREDITS have been allowed for the following mining claims as they were not sufficiently covered by the survey:

Mining Claims

PA. 200724 - 25

200728

200824 to 28 Inclusive

200927 - 28

201038

The Mining Recorder may reduce the above credits if necessary in order that the total number of approved assessment days recorded on each claim does not exceed the maximum allowed as follows: Geophysical - 80; Geological - 40; Geochemical - 40;

NAMES AND ADDRESSES

Chief Line Cutter or Contractor R. BRANNON, RED LAKE, ONTARIO

Party Chief GEORGE DICK, THICKET PORTAGE MAN., ROBERT LEE, TORONTO, ONTARIO.

Consultant _____

COVERING DATES

Line Cutting JANUARY 3 to JANUARY 20, 1970

Field and Office APRIL 6 - 10, 1970 OFFICE APRIL - 5 DAYS

INSTRUMENT DATA

Make, Model and Type ABEM MINIGUN, HORIZONTAL LOOP, FREQUENCY 3520 cps.

Scale Constant or Sensitivity 1% per scale division
or provide copy of instrument data from Manufacturer's brochure

Total Number of Stations Within Claim Group 450

Number of Miles of Line cut Within Claim Group 7.5 miles

ASSESSMENT WORK CREDITS REQUESTED

Geological Survey _____ Days per Claim

Geophysical Survey 40 Days per Claim

MINING CLAIMS TRAVERSED

PA 200724, 200725, 200728, 200824, 200825, 200826, 200827,

200828, 200927, 200928, 201038.

DATE August 20, 1970

TOTAL 11

SIGNED *J. A. L. [Signature]*

A separate form is required for each type of survey

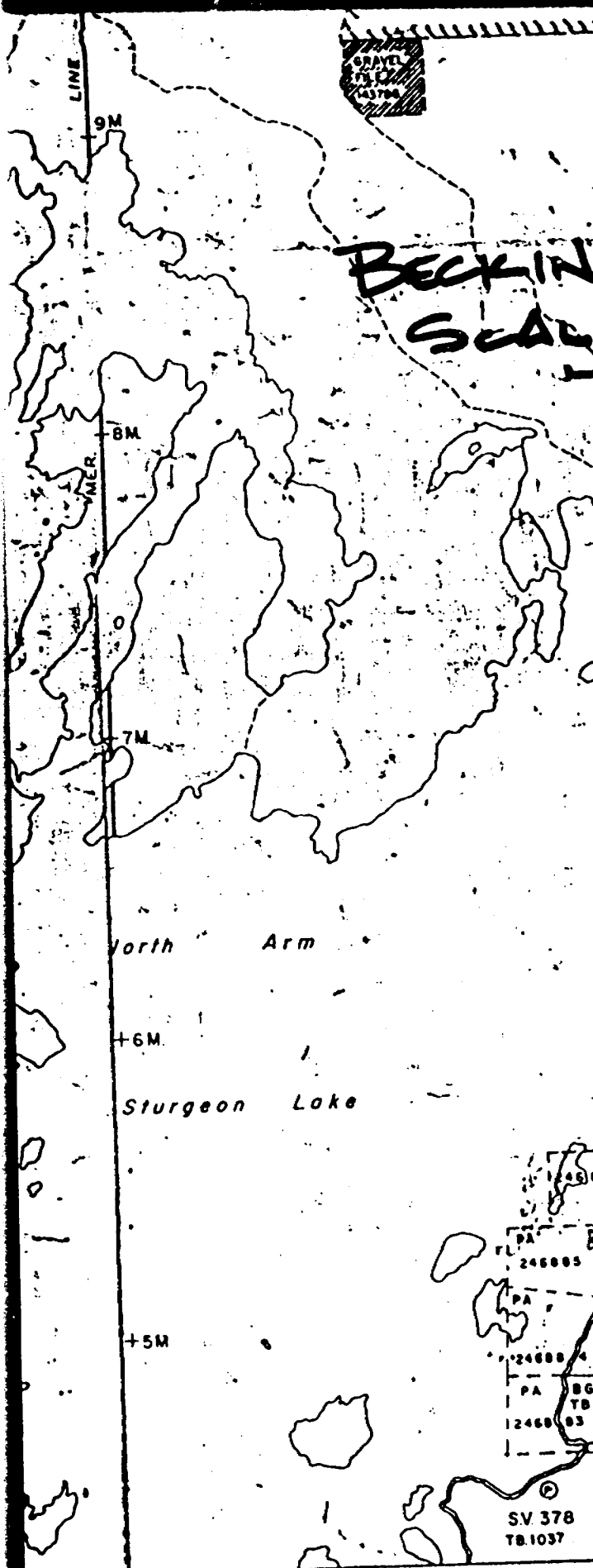
BECKINGTON LK.

SCALE: 1" = 400'

AL 668
TB 648
①

261826	261827	261828
261833	261832	261831
261834	261835	261836
261841	261840	261839

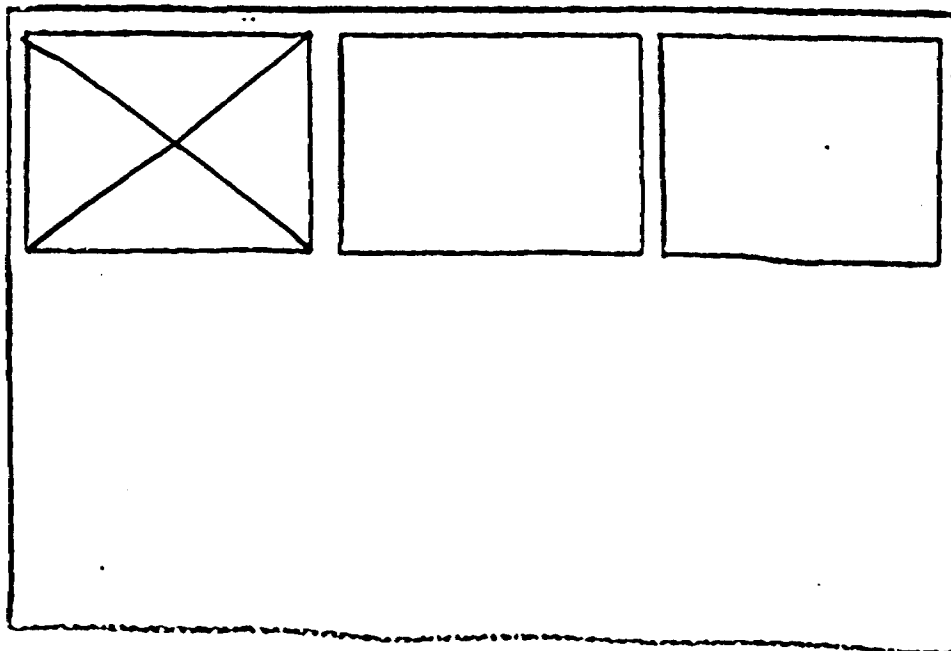
231709	231710	231715	231716	231721	201054	201063
231708	231711	231714	231717	231720	201055	201062
231707	231712	231713	231718	231719	201051	201061
231722	AL 667 TB 211	201045	201048	201050	201057	201060
231723	AL 666 TB 210	201046	201047	201049	201058	
231724	TB 953	201099	201098	201097	201096	201095
231725	TB 720	201089	201090	201091	201092	19532
231728	TB 6978	201088	201085	201086	201083	TB 19533
246886	B.G. 158 TB 6979	201078	201079	201080		T.B. 19538
246885	B.G. 157 TB 6980	201074	201072	201073		T.B. 19537
246884	B.G. 156 TB 6981	227069	227068	227065	227064	227061
246883	B.G. 155 TB 6982	227070	227067	227066	227063	227062
SV 378 TB 1037	HW 696	227044	227043	227042	227041	227040
201038	200728	235384	235383	235382	235381	227041

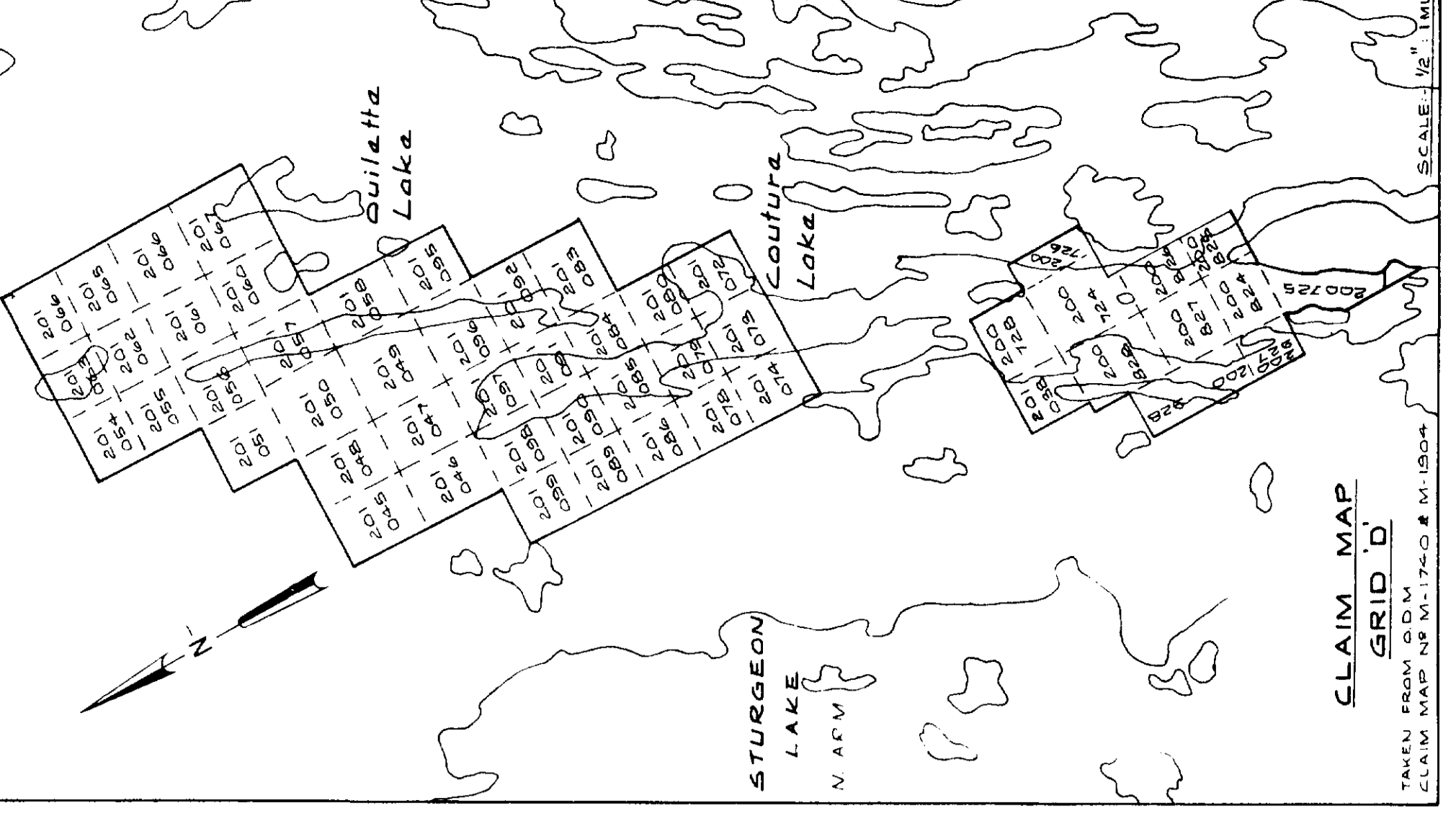
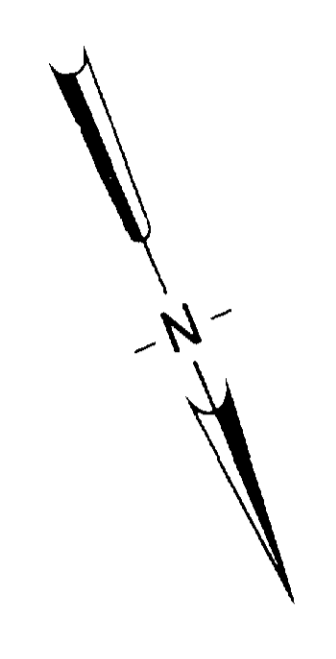
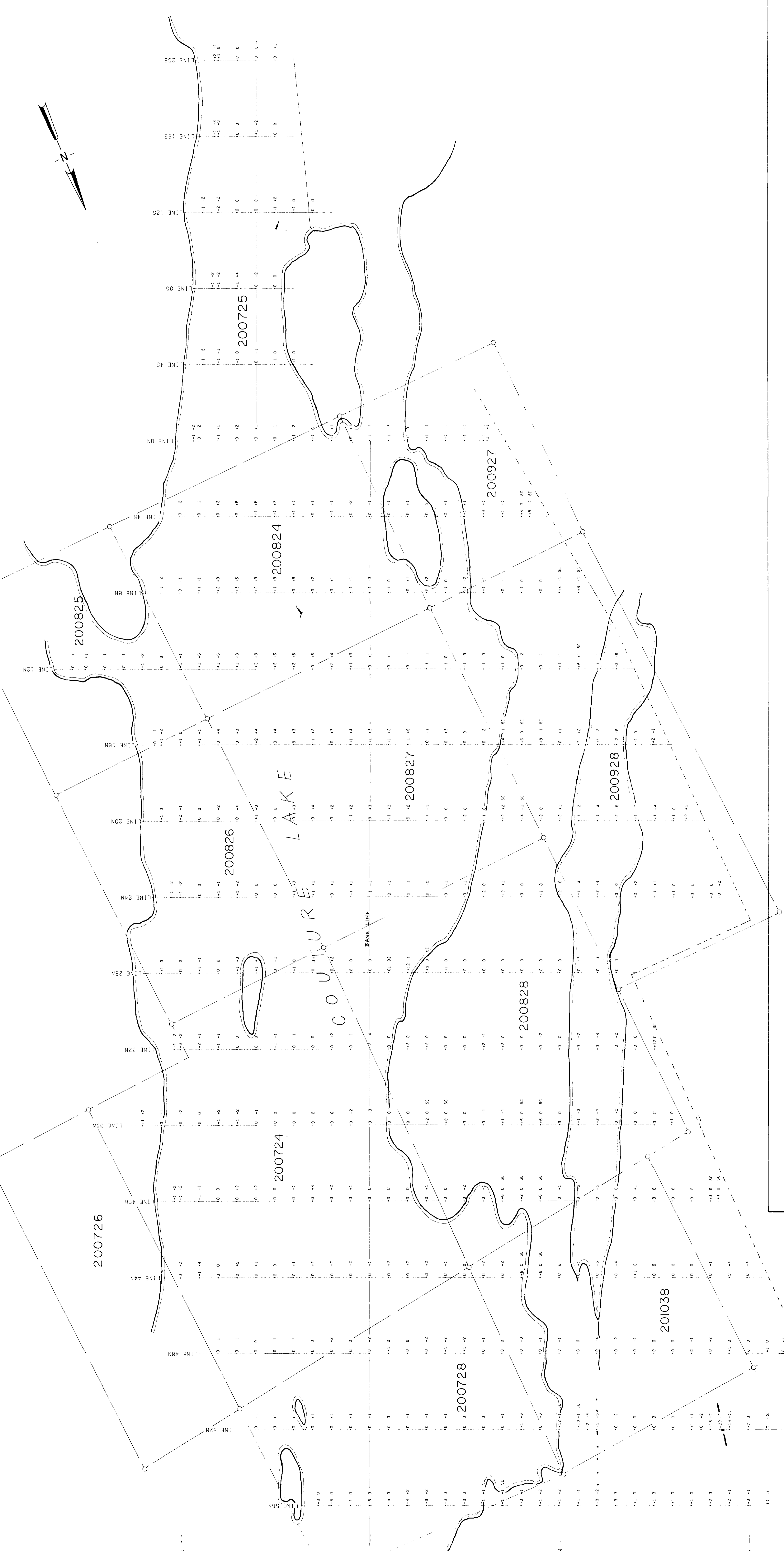


SEE ACCOMPANYING
MAP(S) IDENTIFIED AS

52 J/02 SE - 0037 - A1, #1

LOCATED IN THE MAP
CHANNEL IN THE FOLLOWING
SEQUENCE (X)





CLAIM MAP
GRID 'D'
TAKEN FROM S.D.M.
CLAIM MAP NO. W-79-0-2-10-00-00-00
SCALE 1:25000

LEGEND

LOW FREQ. HIGH FREQ.
IN-PHASE READINGS
OUT-OF-PHASE READINGS

FREQUENCY: 3520 HZ AND 880 HZ
COIL INTERVAL: 200 FT. (EXCEPT AS NOTED)
CONDUCTIVITY: STRONG ——— WEAK ——— INDEFINITE

52T/02SE-0037A(1)

ELECTROMAGNETIC SURVEY
GEOSEARCH CONSULTANTS LTD.
FOR
SELCO EXPLORATION CO. LTD.
NORTH GRID
SHEET 3
NORTH STURGEON LAKE AREA, ONTARIO
DATE: 10/29/99 SCALE: 1 INCH TO 200 FT.
APPROVED: GRID 'D' 70-41

J. G. Gault

