



52J02SE8710 2.574 SQUAW LAKE

010

SELCO EXPLORATION COMPANY LIMITED

GEOPHYSICAL REPORT

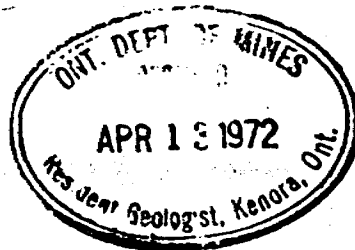
CLAIMS 200981 to 200990; 200992 to 201001;
201003 to 201032; 201034 to 201037;
201119 to 201130; 211283;
211271 to 211275; 211634 to 211640;
211648; 227328; 227333; 227010;
227012 to 227024; 227026 and 227040.

PATRICIA MINING DIVISION

RECEIVED

AUG 23 1971

PROJECTS
SECTION

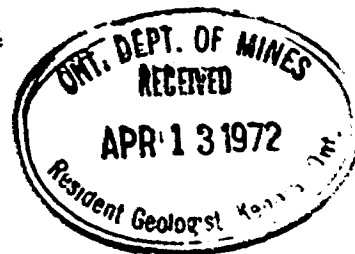


August 1971.

-2.574.

SELCO EXPLORATION COMPANY LIMITED

CLAIMS PA 200981 et al
PATRICIA MINING DIVISION



This report describes results of a ground magnetometer survey undertaken during January and February 1970 over ninety-nine claims in the vicinity of Sturgeon Lake, Patricia Mining Division.

Location and Access

The claims are on a long peninsula between the North Bay of Sturgeon Lake and the Northeast Arm of Sturgeon Lake. Access can be had by the Ignace-Savant Lake highway, thence by canoe, or by float- or ski-equipped aircraft landing on Sturgeon Lake.

Description of Claims

The property consists of ninety-nine contiguous unpatented mining claims as follows:-

Nos. 200981 to 200990 inclusive; 200992 to 201001 inclusive; 201003 to 201032 inclusive; 201034 to 201037 inclusive; 201119 to 201130 inclusive; 211283; 211271 to 211275 inclusive; 211634 to 211640 inclusive; 211648; 227328; 227333; 227010; 227012 to 227024 inclusive; 227026 and 227040.

Survey Procedure

The claims have been covered by a grid of control lines comprising northerly trending baselines and easterly trending offsets at intervals of 400 feet, a total of 83.6 miles of lines.

Offsets have been picketed at intervals of 100 feet and ground magnetic readings have been taken along these lines at intervals of 100 feet.

Aug. 1971

The surveys were performed by Geosearch Limited under contract to Selco Exploration Company Limited. The party chief was R.H. Lacey and the surveys were performed between January 18 and February 16th, 1970.

Magnetometer Survey

The magnetometer survey was performed using an ABEM MZ-4 Torsion Magnetometer measuring the vertical component of the earth's magnetic field. The readings are shown on the accompanying contoured plans, No. 70-14.

Results

The results presented on these sheets are found on an arm of land between the main body of Sturgeon Lake and the northeast arm of the lake. For the most part the underlying rocks are mafic volcanics although the main granitic body of the area touches on the west side. A gabbro body has been mapped along the northwest side of the long lake on sheet 6. (ODM compilation map 2169).

The magnetics display a rather similar pattern throughout the survey area. One or two line highs to over 2000 gammas tend to be linked together along long trends extending in a north-northeasterly direction. Long horizons irregularly mineralized with magnetite and possibly pyrrhotite are presumed to lie in mafic volcanics. Several broad areas of more regular magnetic activity suggest volcanics of more acid composition. Flat magnetics over the water areas to the west, south and north indicate that the volcanics are terminated against the granites more or less along the shore line.

Of the long high trends, the most prominent is seen at its southern end near the base line 25E at about line 92S. This extends through a series of highs east of this base line to the northern limit of the survey. Another less well developed (or less well resolved on this survey) zone is seen from 1000 to 1500 feet east of the main zone.

A broader area of scattered highs suggestive of mafic volcanics extends from sheet 1 to sheet 7 on the west side of the 25E base line. These scattered highs seem to fold around both sides of a broad flat area on sheet 3. This could be either granite tying to granite mapped just southwest or acid or intermediate volcanics. A smaller but similar flat area occurs central to grid 6.

The previously mentioned gabbro on sheet 6 may have a magnetic identity in strong magnetics west of the lake, however, their narrow appearance is reminiscent of other magnetic features on the survey area suggested to be due to magnetite and/or pyrrhotite.

The strong high on sheet 4 trending in an east-northeasterly direction (drawn as three separate peaks) is suggestive by its discordant attitude of a basic dyke although it may be, like other responses in the area, due to magnetic mineralization in the volcanics.



Laurie Reed

Laurie Reed, P. Eng.
Chief Geophysicist

August 1971.



52J02SE8710 2.574 SQUAW LAKE

900

AREA CODE — 416
TELEPHONE — 965-6918



2.574

WHITNEY BLOCK,
QUEEN'S PARK,
TORONTO 182, ONT.

DEPARTMENT OF MINES AND NORTHERN AFFAIRS
MINING LANDS BRANCH

April 10, 1972

Mr. W. A. Buchan
Mining Recorder
Court House
Sioux Lookout, Ontario

Dear Sir:

Re: Mining Claims Pa. 200984 et al
Squaw Lake Area. File 2.574

The Geophysical (Magnetometer) assessment work credits as listed with my Notice of Intent dated March 17, 1972 have been approved as of the date above. Please inform the recorded holder and so indicate on your records.

Yours very truly,

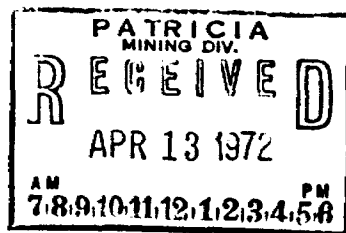
F. W. Matthews
Fred W. Matthews
Supervisor
Projects Section

OJ/mh

cc: Selco Exploration Co. Ltd.
6th Floor - 55 Yonge St.
Toronto 1, Ontario

Attn: Mr. J.A. Gribben

cc: Mr. H. L. King
Resident Geologist
808 Robertson Street
Kenora, Ontario



Pa. 200981

TECHNICAL ASSESSMENT WORK CREDITS

Recorder Holder Selco Exploration Company Limited

Township or Area Squaw Lake Area

Type of Survey and number of Assessment Days Credits per claim

GEOPHYSICAL

Magnetometer 20days

Electromagneticdays

Radiometricdays

GEOLOGICAL.....days

GEOCHEMICAL.....days

Man days

Ground

Special Provision

Airborne

NOTICE OF INTENT TO BE ISSUED

Credits have been reduced because of partial coverage of claims.

Credits have been reduced because of corrections to work dates and figures of applicant.

NO CREDITS have been allowed for the following mining claims as they were not sufficiently covered by the survey:

Mining Claims

Pa. 200981
200984 to 90 inclusive
200993 to 201001 inclusive
201003 to 32 "
201034 to 37 "
201119 to 30 "
211271 to 75 "
211635 to 40 "
211648
227010
227012 to 24 inclusive
227040

An allowance of 10 days assessment credits only is approved for each of mining claims

Pa. 200982 - 83 X
200992 X
211283 X
211634 -
227328 -
227333 -
227026 X

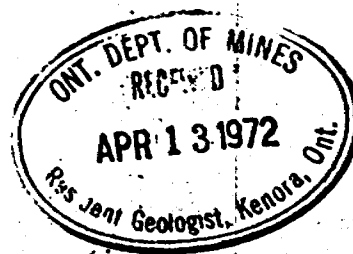
The Mining Recorder may reduce the above credits if necessary in order that the total number of approved assessment days recorded on each claim does not exceed the maximum allowed as follows: Geophysical - 80; Geological - 40; Geochemical - 40;

Claim No.

Claim No.

PA 200981
 200982
 200983
 200984
 200985
 200986
 200987
 200988
 200989
 200990
 200992
 200993
 200994
 200995
 200996
 200997
 200998
 200999
 201000
 201001
 201003
 201004
 201005
 201006
 201007
 201008
 201009
 201010
 201011
 201012
 201013
 201014
 201015
 201016
 201017
 201018
 201019
 201020
 201021
 201022
 201023
 201024
 201025
 201026
 201027
 201028
 201029
 201030
 201031
 201032
 201034
 201035
 201036
 201037
 201119
 201120
 201121
 201122
 201123
 201124
 201125

PA 201126
 201127
 201128
 201129
 201130
 211283
 211271
 211272
 211273
 211274
 211275
 211634
 211635
 211636
 211637
 211638
 211639
 211640
 211648
 227328
 227333
 227010
 227012
 227013
 227014
 227015
 227016
 227017
 227018
 227019
 227020
 227021
 227022
 227023
 227024
 227026
 227040



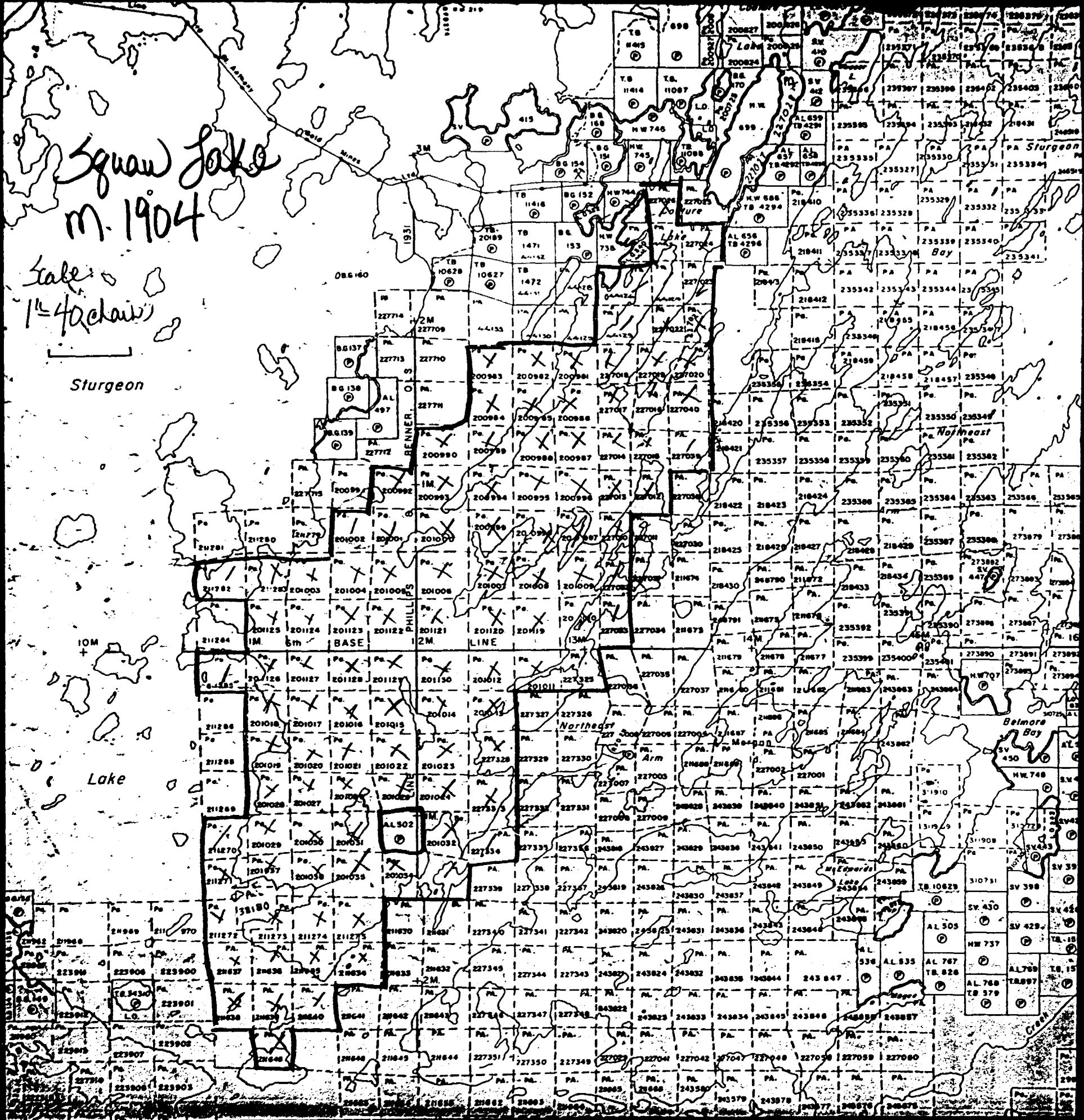
Squaw Lake
m. 1904

Scale
1" = 40 chains

Sturgeon

10M

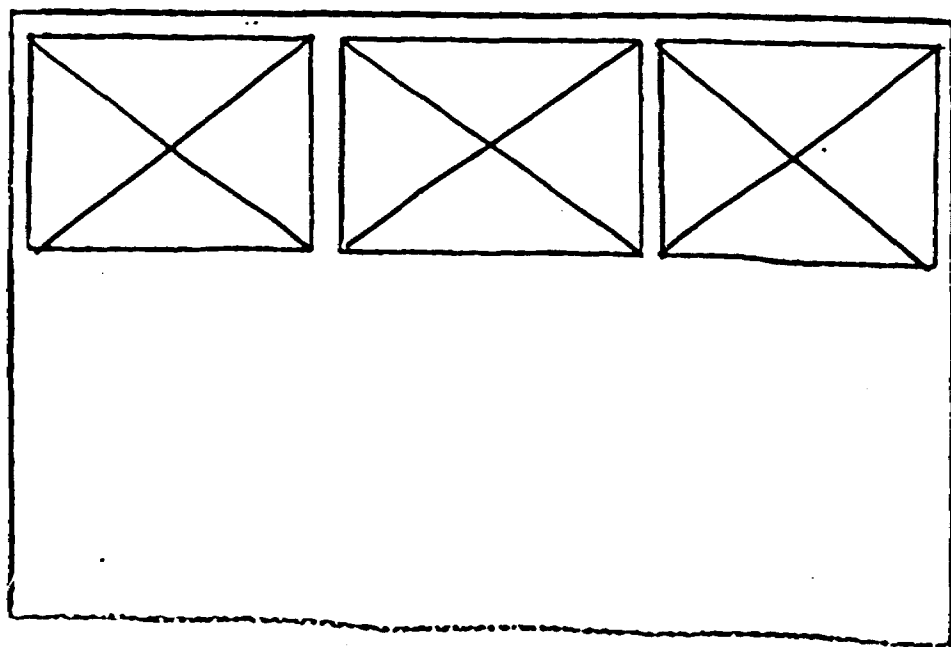
Lake



SEE ACCOMPANYING
MAP(S) IDENTIFIED AS

52J/02SE-0032, #1-3

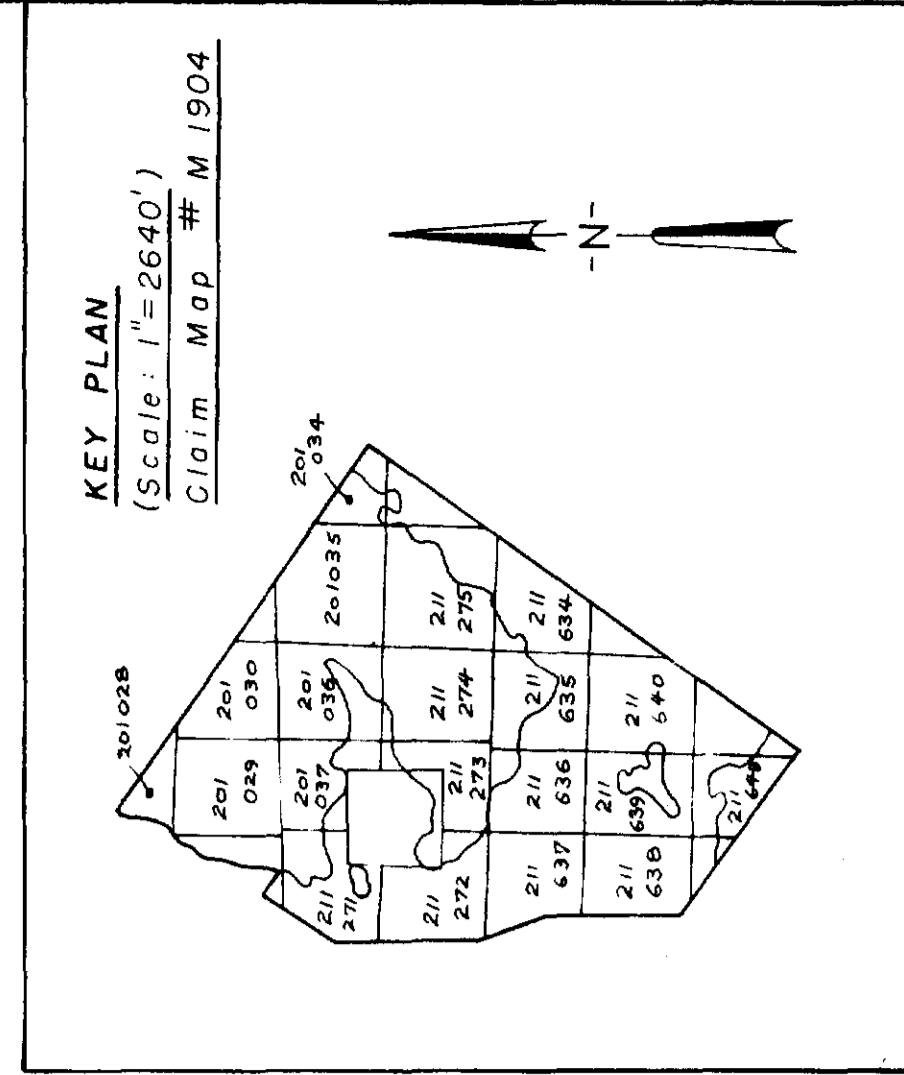
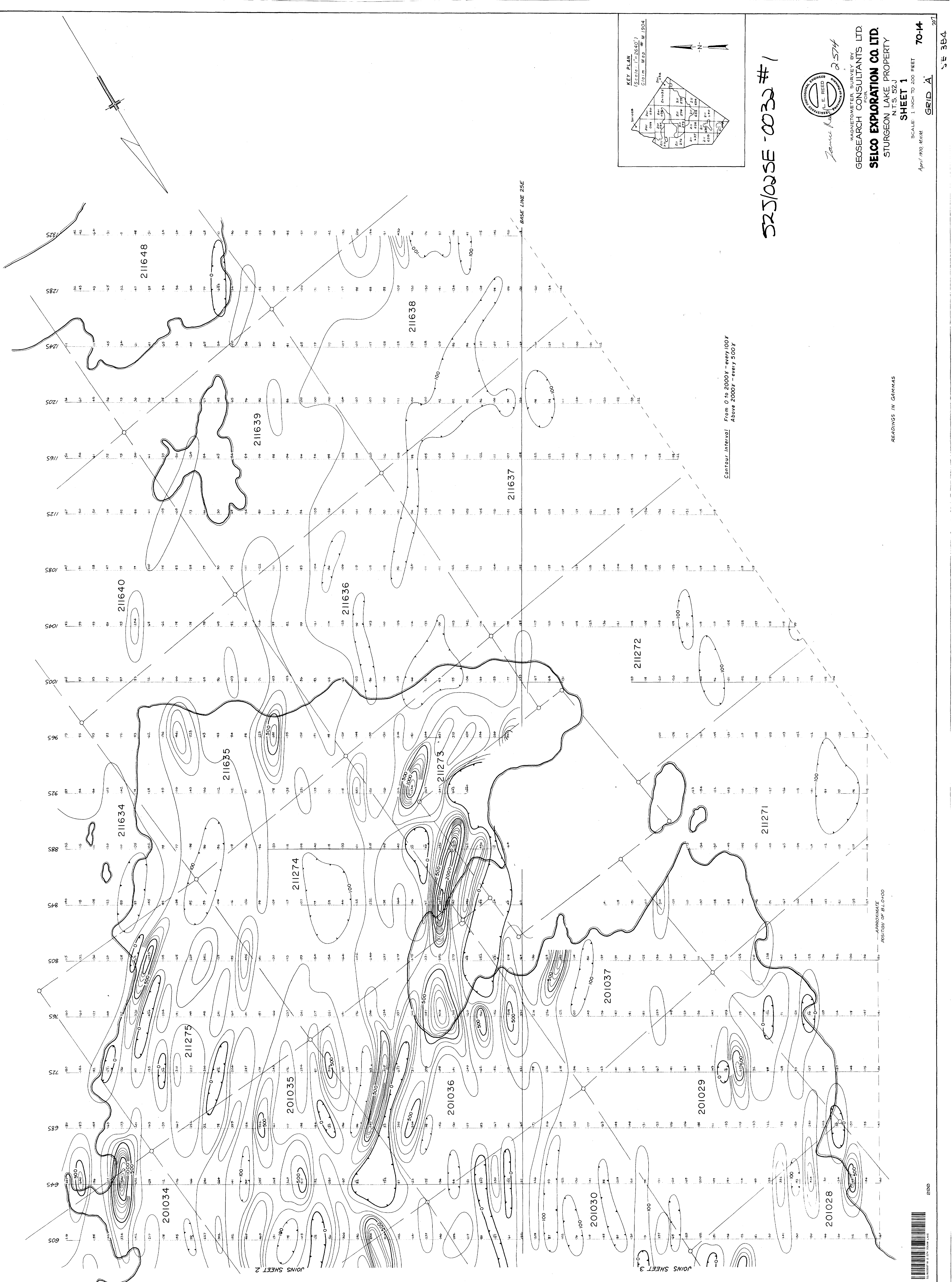
LOCATED IN THE MAP
CHANNEL IN THE FOLLOWING
SEQUENCE (X)



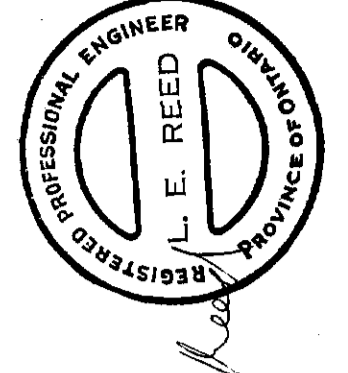
FOR ADDITIONAL
INFORMATION:

SEE MAPS:

52 J/02 SE - 0032 # 4-7

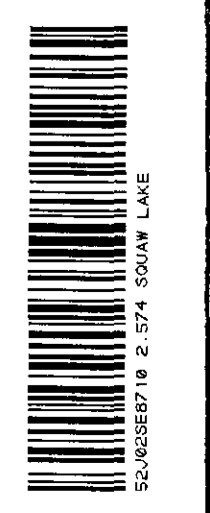


525/025E - 0032 #1


 MAGNETOMETER SURVEY BY
GEOSEARCH CONSULTANTS LTD.
 FOR
SEICO EXPLORATION CO. LTD.
 STURGEON LAKE PROPERTY
 N.T.S. 52J
SHEET 1
 SCALE: 1 INCH TO 200 FEET
SEID. A
 April 1970, March
 70-14
 207
 S.E. 384

Contour Interval From 0 to 2000' - every 100'
 Above 2000' - every 500'

READINGS IN GAMMAS

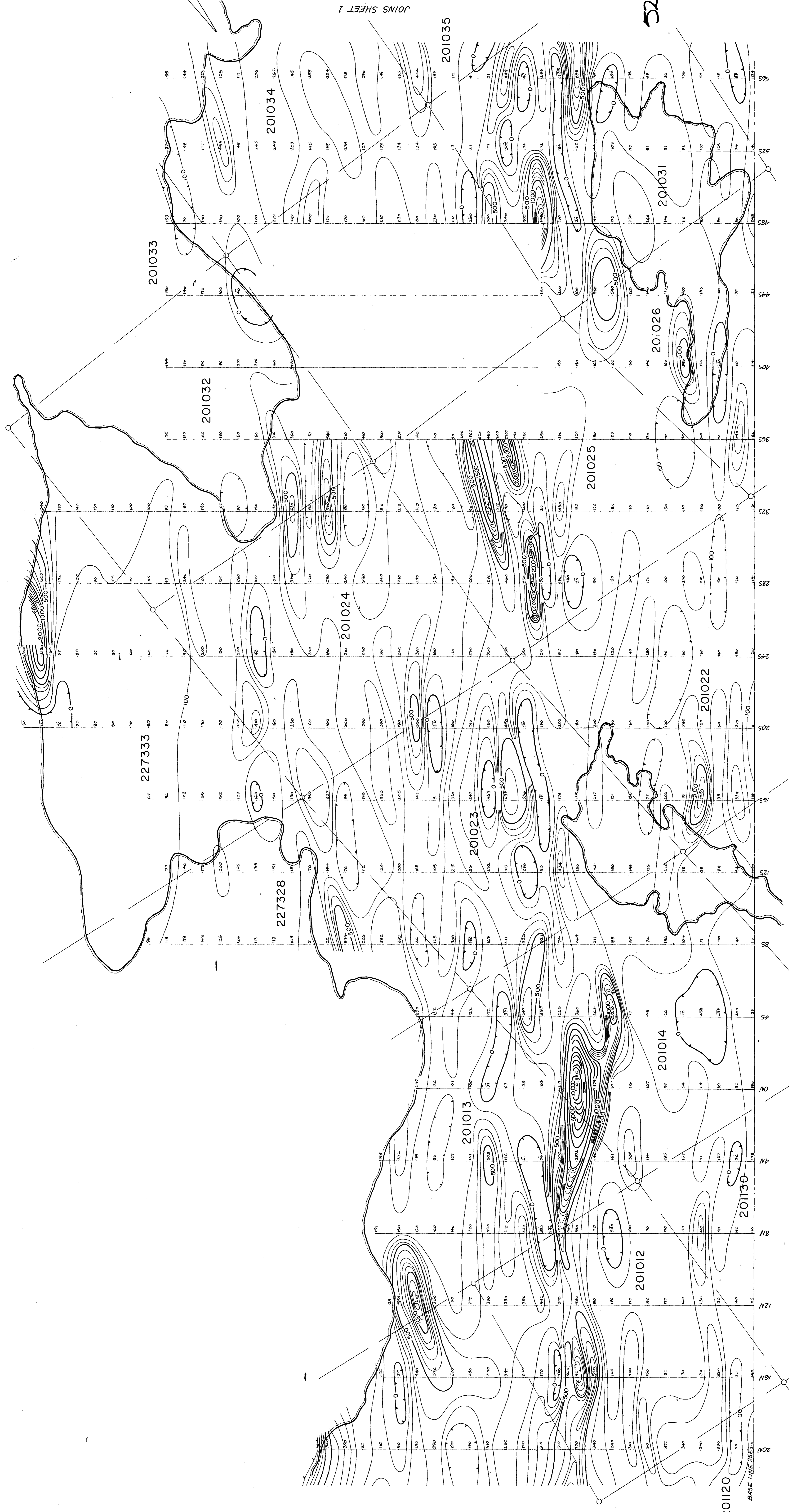


2000

PROPOSED
 POSITION OF B.L. 600

JOINS SHEET 2

JOINS SHEET 3



JOINS SHEET 1

201035

201034

201033

201032

201024

201023

201025

201026

201031

201022

201014

201012

201013

201130

201120

227333

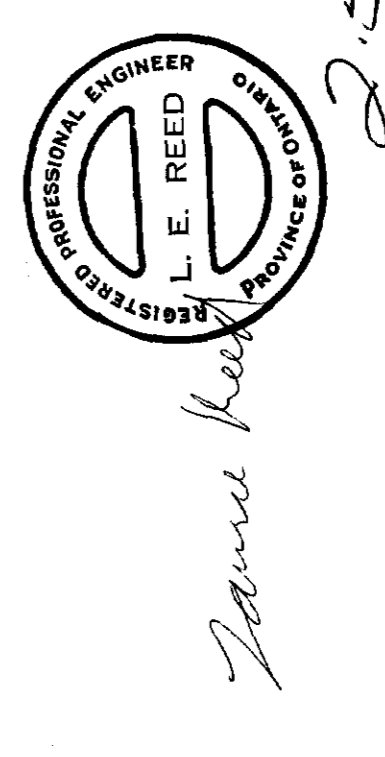
227328

BASE LINE 25E10

JOINS SHEET 5

KEY PLAN
 (Scale: 1" = 2666')
 Claim Map # M1904

525/04SE-0032#2



MAGNETOMETER SURVEY BY
 GEOSARCH CONSULTANTS LTD.
 FOR
SELCO EXPLORATION CO. LTD.
 STURGEON LAKE PROPERTY
 N.T.S. 52J

READINGS IN GAMMAS

Contour Interval From 0 to 2000' - every 100'
 Above 2000' - every 500'

JOINS SHEET 3

SHEET 2

SCALE: 1 INCH TO 200 FEET

April 1970, M.H.M.

GRID 'A'

70-14

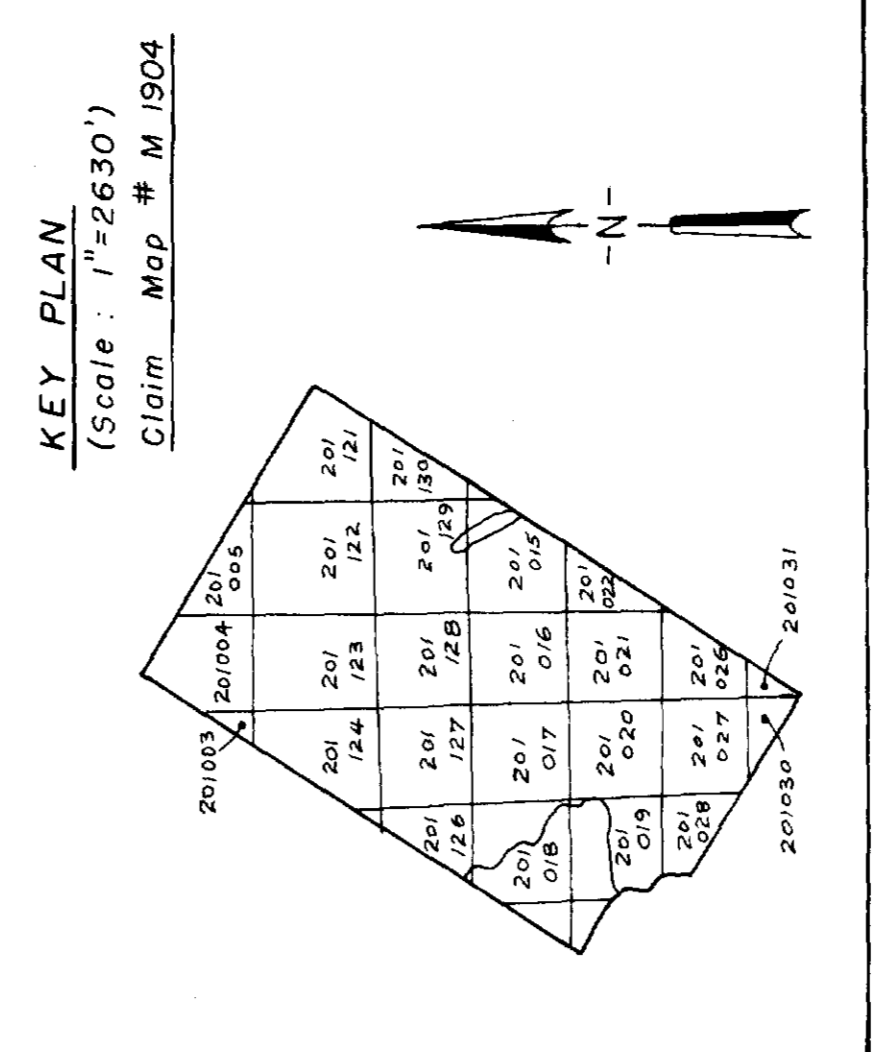
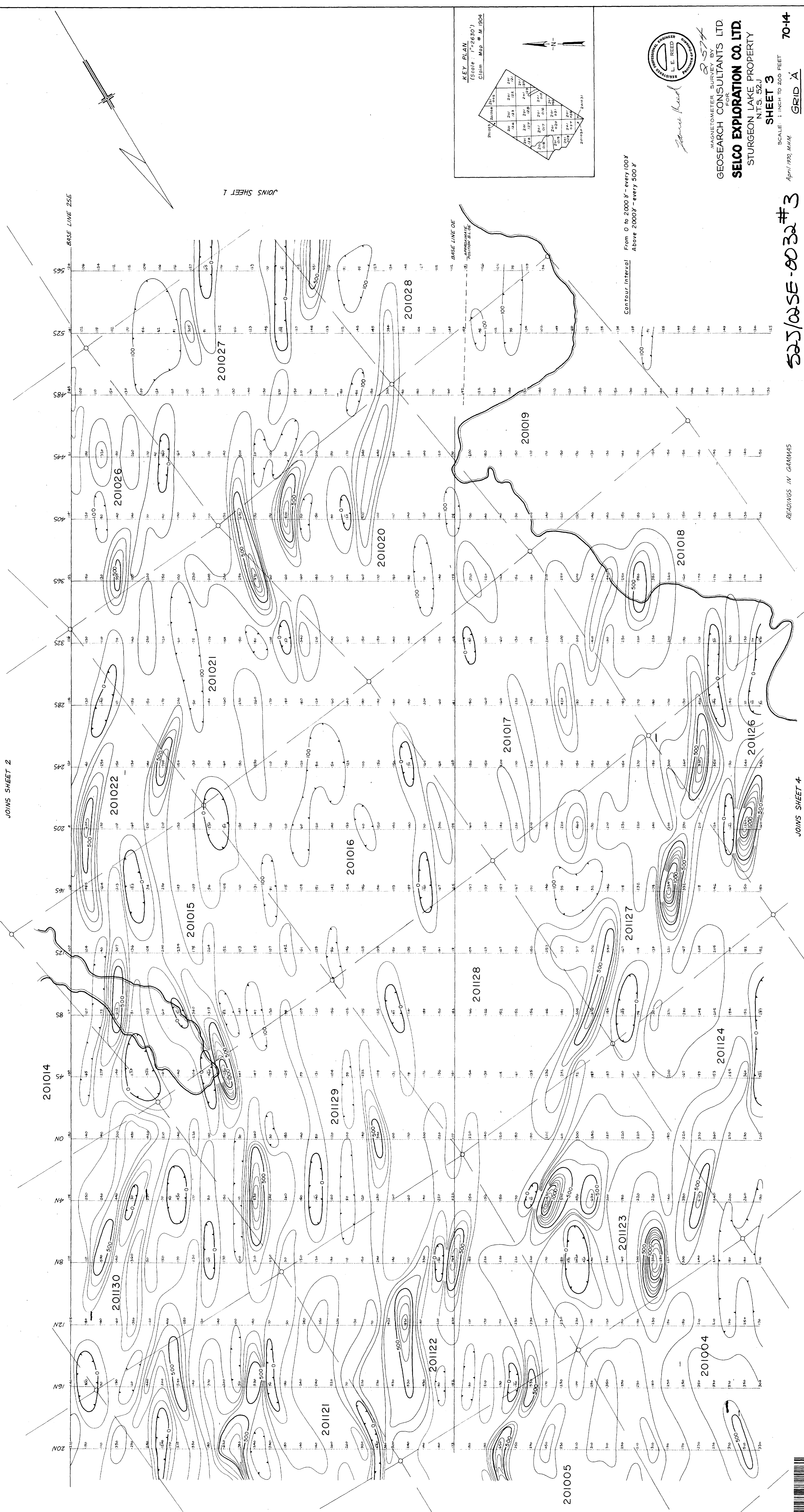
SE 385



E10

JOINS SHEET 2

JOINS SHEET 1



Contour Interval
From 0 to 2000' - every 100'
Above 2000' - every 500'



MAGNETOMETER SURVEY BY
L.E. REED
GEOSEARCH CONSULTANTS LTD.
SELCO EXPLORATION CO. LTD.
STURGEON LAKE PROPERTY
N.T.S. 52J

SHEET 3

SCALE: 1 INCH TO 200 FEET
April 1995, M.H.M.

52J/02SE-0032 #3

READINGS IN GAMMAS

JOINS SHEET 4

GRID 'A'

70-14

SE 386 207



UNIVERSITY OF TORONTO LIBRARY

250

JOINS SHEET 3



Contour Interval
 From 0 to 2000' - every 100'
 Above 2000' - every 500'

READINGS IN GAMMAS

KEY PLAN
 (Scale: 1" = 2640')
 Claim Map # M 1904

REGISTERED PROFESSIONAL ENGINEER
 L. E. REED
 PRINCIPAL
 J. E. REED
 2-574

MAGNETOMETER SURVEY BY
 GEOSARCH CONSULTANTS LTD.
 FOR
SEICO EXPLORATION CO. LTD.
 STURGEON LAKE PROPERTY
 N.T.S. 52J

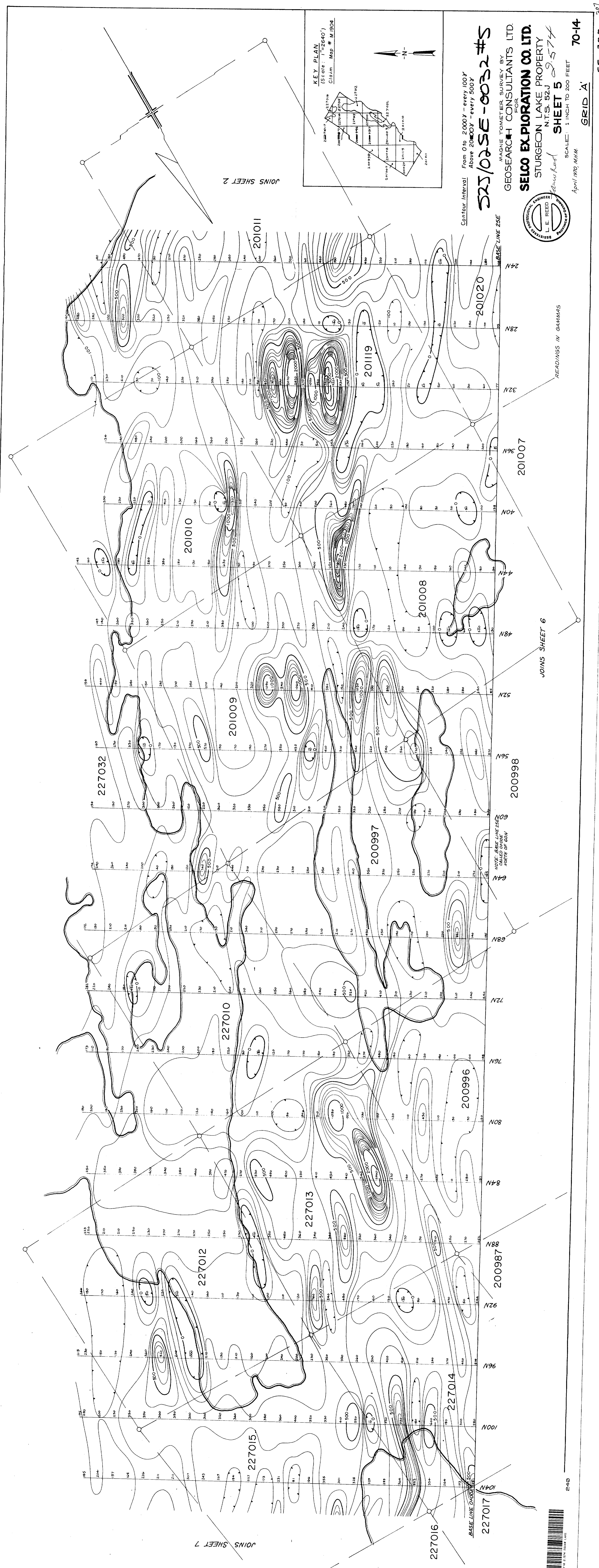
525/02SE - 0032 #4

April 1970, M.H.M.
 SCALE: 1 INCH TO 200 FEET
SHEET 4
 GRID 'A'

70-14

SE 387 207





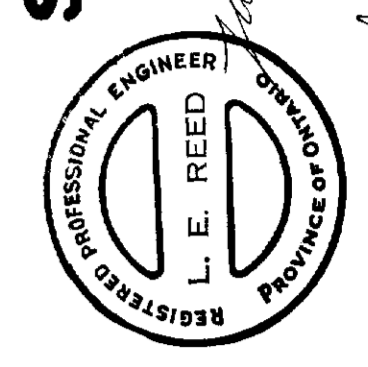
KEY PLAN
 (Scale: 1"=2640')
 Claim Map # M.1904

Contour Interval From 0 to 2000 - every 100
 Above 2000 - every 500

525/025E-0032#S

MAGNETOMETER SURVEY BY
GEOSURVEY CONSULTANTS LTD.
 FOR
SELCO EXPLORATION CO. LTD.
 STURGEON LAKE PROPERTY
 N.T.S. 52J 9574
SHEET 5

April 1970, M.M. SCALE: 1 INCH TO 200 FEET
GRID 'A' 70-14
 SE 308 207



JOINS SHEET 2

JOINS SHEET 6

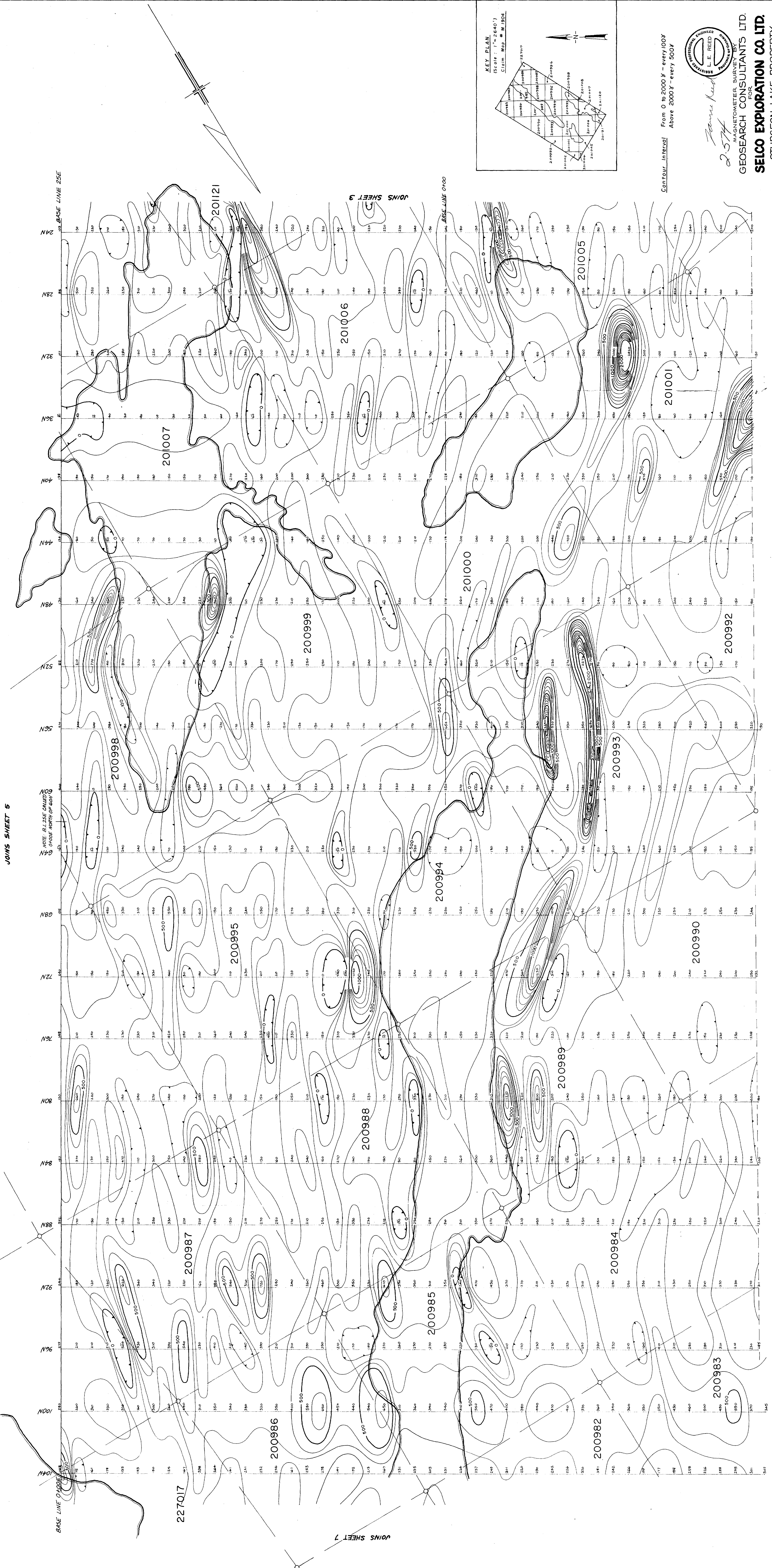
READINGS IN GAMMAS

NOTE: BASE LINE ZONE NORTH OF 60N

E-40



JOINS SHEET 5



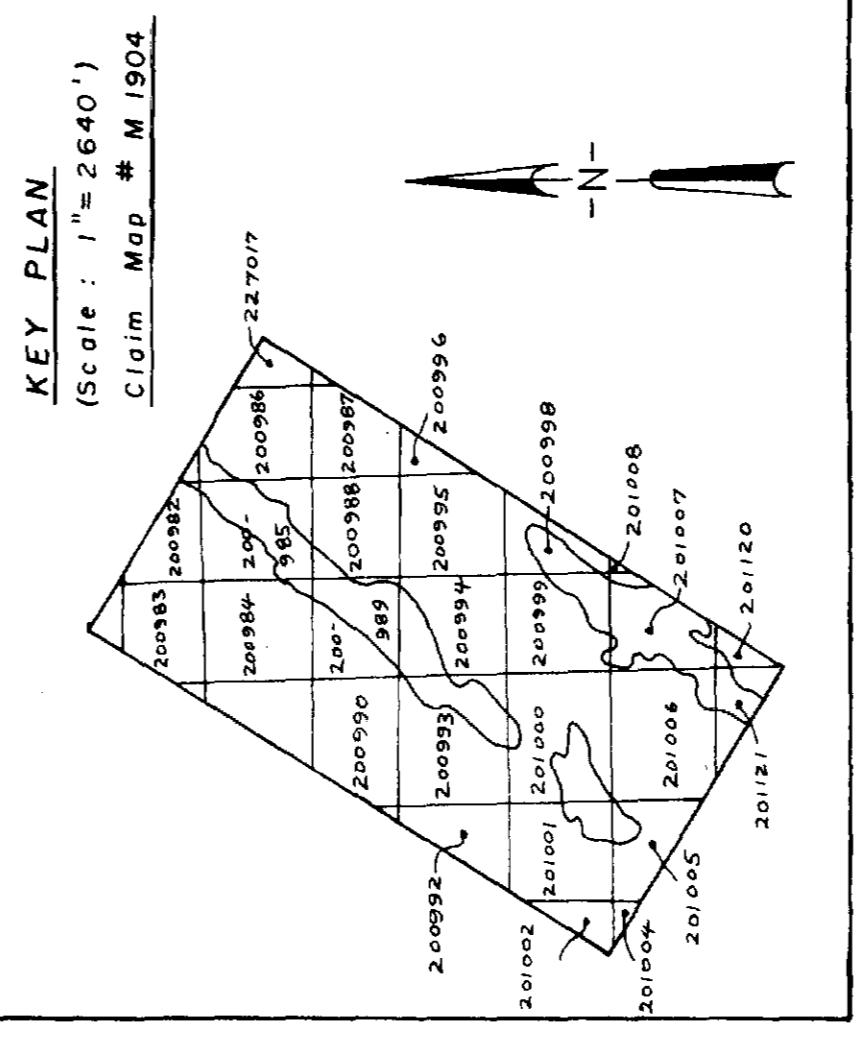
BASE LINE 25E

BASE LINE 040E

JOINS SHEET 7

JOINS SHEET 3

BASE LINE 040E



Contour Interval From 0 to 2000 ft - every 100 ft
Above 2000 ft - every 500 ft



2574
 GEOSOURCE CONSULTANTS LTD.
 STURGEON LAKE PROPERTY
 N.T.S. 52J

READINGS IN GAMMAS

SCALE: 1 INCH TO 200 FEET

SHEET 6

April 1970, M.M.

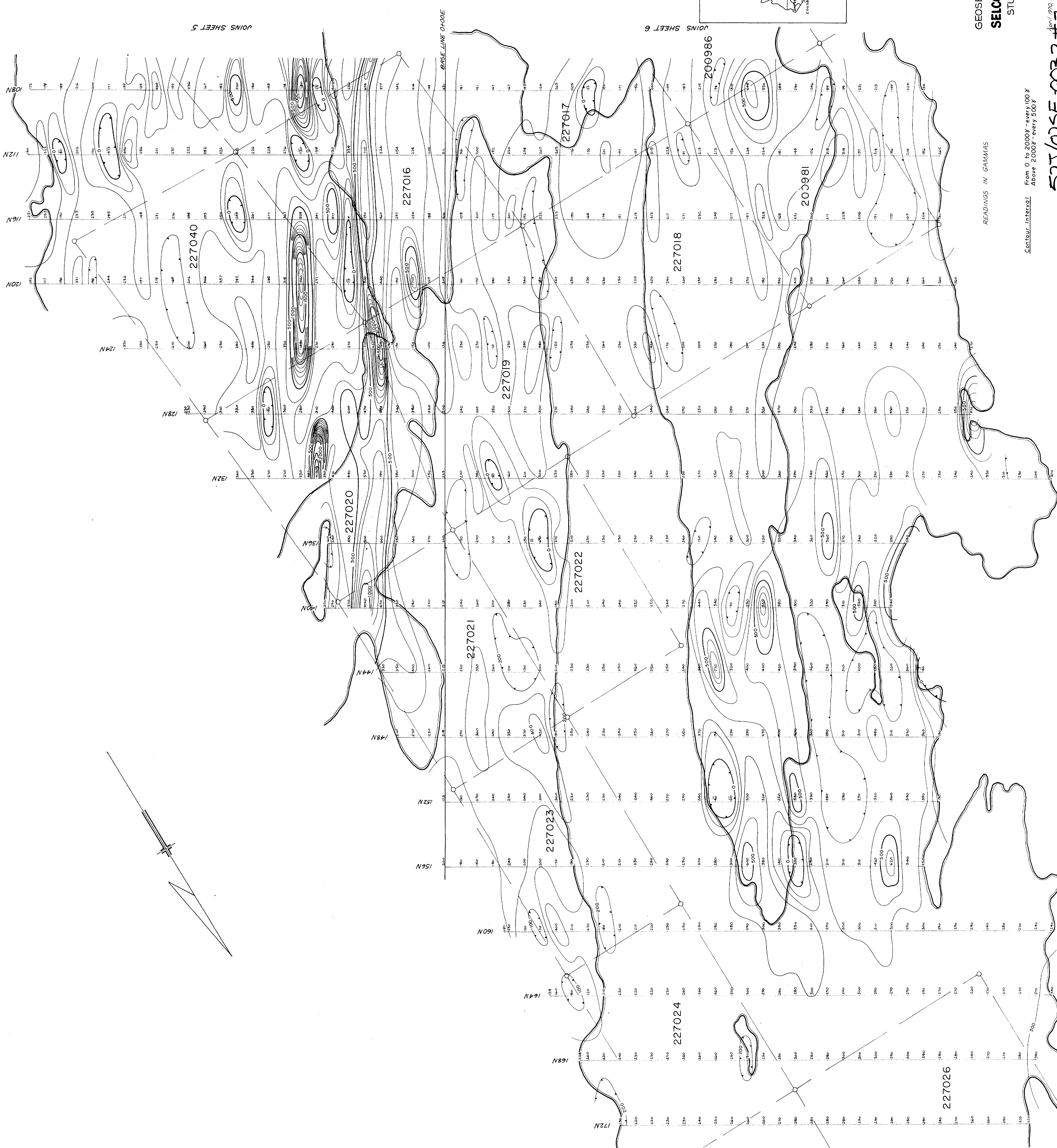
525/02SE-0032 #6

GRID 'A'

70-14

SE 389

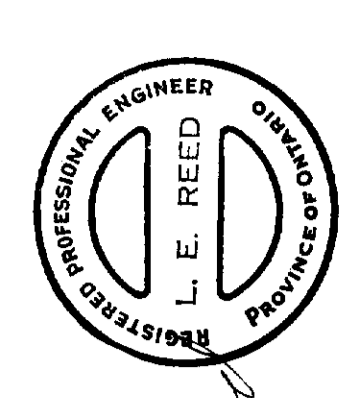




JOINS SHEET 5

JOINS SHEET 6

KEY PLAN
 (Scale = 1:25,000)
 CLAIM MAP # M 1904



L. E. Reed
 2-574

MAGNETOMETER SURVEY BY
 GEOSURVEY CONSULTANTS LTD.
SELCO EXPLORATION CO. LTD.
 STURGEON LAKE PROPERTY
 N.T.S. 52.1

SHEET 7
 April 1970 M.A.M.
 SCALE: 1 INCH TO 200 FEET
 GRID A 70-14

READINGS IN GAMMAS

Contour Interval From 0 to 2000' - every 100'
 Above 2000' - every 500'

525/025E 0032#7

