

52J/02SE-0060

LOAD: 16mm

DD 037

DIAMOND DRILLING



52J02SE9261 37 SQUAW LAKE

010

Area: SQUAW LAKE:

Report No: 37

WORK PERFORMED FOR: MISTANGO CONSOLIDATED RESOURCES LTD.

RECORDED HOLDER: SAME AS ABOVE [X]

: OTHER []

<u>CLAIM NO.</u>	<u>HOLE NO.</u>	<u>FOOTAGE</u>	<u>DATE</u>	<u>NOTE</u>
Pa 590673	M-86-4	203 '	May/86	(1)
	M-86-5	297 '	May/86	(1)
Pa 590678	M-86-6	516 '	June/86	(2)
<hr/>				
TOTAL:	3 DM	1016'		

NOTES: (1) # 125-86
(2) # 126-86

Claim 590673
B.Q. core size
Core stored at Mousseau
Camp Sturgeon Lake

DIAMOND DRILL RECORD

MISTANGO CONS. RES. LTD.

HOLE NO. M-86-4.. SHEET NO. ...1.....

GEOLOGY
LATITUDE 2+ 0N DATUM STARTED May 25, 1986
DEPARTURE 17 + 50E BEARING Due North COMPLETED May 26, 1986
ELEVATION Lake + 5.0' DIP -70' @ 200' -68° ULTIMATE DEPTH 203.0'

DEPTH FEET	FORMATION	FORMATION
0-4.0	Casing	
4.0-25.7	Fragmental rock. Dacite to rhyolite composition, greenish grey, 10-20% fragments of altered agglomerate with some very angular fragments of rhyolite-dacite that resemble breccia fragments. 20-30% phenocryst-like fragments of greyish quartz 1-2% disseminated pyrite. (this rock may be mylonite)	
25.7-26.7	Fine grained greyish phase of fragmental agglomerate with a possible contact at 40° to core axis at 25.7 ft.	
26.7-42.7	Agglomerate breccia, greenish-grey, 20% coarse rhyolitic fragments, 2% pyrite, a few opalescent blue qtz. phenocrysts.?	
42.7-56.0	Fragmental-agglomerate tuff, fine to med. grained, greyish with no apparent stratification.	

Drilled by: Morisette D. Drilling

**DUPLICATE COPY
FOR QUALITY ORIGINAL
TO FOLLOW**

17M 590673
3" CORE SIZE
CORE STORED AT
BOUSSEAU CAMP
STURGEON LAKE

DIAMOND DRILL RECORD MISTANGO CONS. RES. LTD.

Geology

HOLE NO. M-86-4 SHEET NO. 1

LATITUDE 20 ON

DATUM

STARTED May 25, 1986

DEPARTURE 17 + 50 E

BEARING DUE NORTH

COMPLETED May 26, 1986

ELEVATION LAKE + 51.0

DIP -70° @ 200' -68°

ULTIMATE DEPTH 203.0

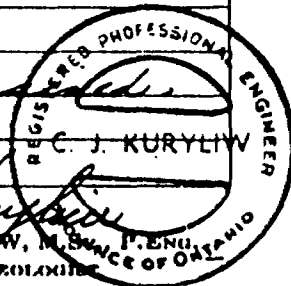
DEPTH FEET	FORMATION	FORMATION
0 - 4.0	Casing	
4.0 - 25.7	Fragmental rock dacite to rhyolite composition, greenish grey, 10-20% fragments of altered agglomerate with some very angular fragments of rhyolite-dacite that resemble breccia fragments. 20-30% phenocryst-like fragments of greyish quartz, 1-2% disseminated pyrite. (This rock may be mylonite.)	
25.7 - 26.7	Fine grained greyish phase of fragmental agglomerate with a possible contact at 40° to Core axis at 25.7 ft.	
26.7 - 42.7	Agglomerate breccia, greenish-grey, 20% coarse rhyolitic fragments, 2% pyrite, a few apaleocent blue gtz. phenocrysts.	
42.7 - 56.0	Fragmental-agglomerate tuff, fine to med. gr. greyish with no apparent stratification.	

DRILLED BY

Mouette H Drilling

SIGNED

C. J. Kuryliw
CHESTER J. KURYLIW, M. ENG. P. ENG.
CONSULTING GEOLOGIST



DIAMOND DRILL RECORD

MISTANGO CONS. RES. LTD.

HOLE NO. M-86-4 SHEET NO. 2

LATITUDE _____ DATUM _____ STARTED _____
 DEPARTURE _____ BEARING _____ COMPLETED _____
 ELEVATION _____ DIP _____ ULTIMATE DEPTH _____

DEPTH FEET	FORMATION
56.0-87.0	Fine agglomerate breccia, greenish-grey, with fragments in the 2-5mm diameter range, 1% dissem. pyrite. This rock is dacite to rhyolite composition. The agglomerate fragments become progressively coarser towards 87.0 feet.
87.0-133.0	Rhyolitic black sediment, finely banded at 35-40° to the core axis, the darker graphitic black sediment would form a strong E-M conductor, 1-2% 1-2% pyrite and pyrrhotite, partly along the banding traces of chalcopyrite in hairline calcitic fractures.
133.0-184.0	Coarse dacitic to rhyolitic agglomerate breccia, minor dissem. pyrite.
184.0-203.0	Rhyolitic black sediment, finely banded at 40° to core axis, minor pyrite.

203.0' END OF HOLE

Drilled by: Morisette D. Drilling

DUPLICATE COPY
POOR QUALITY ORIGINAL
TO FOLLOW

DIAMOND DRILL RECORD MISTANGO CONS. RES. LTD.

HOLE NO. *A-56-4* SHEET NO. *2*

LATITUDE DATUM STARTED

DEPARTURE BEARING COMPLETED

ELEVATION DIP ULTIMATE DEPTH

DEPTH FEET	FORMATION	FORMATION
<i>56.0 - 87.0</i>	<i>Fine agglomerate breccia, greenish-grey, with fragments in the 2-5 mm diameter range, 1% dissemin. pyrite. This rock is dacite to rhyolite composition. The agglomerate fragments become progressively coarser towards 87.0 feet.</i>	
<i>87.0 - 133.0</i>	<i>Rhyolitic black sediment, finely banded at 35-40° to the core axis, the darker graphitic black sediment would form a strong E-M conductor, 1-2% pyrite and pyrrhotite, partly along the banding, traces of chalcopyrite in hairline calcitic fractures.</i>	
<i>133.0 - 184.8</i>	<i>Coarse dacitic to rhyolitic agglomerate breccia, minor dissemin. pyrite.</i>	
<i>184.8 - 203.0</i>	<i>Rhyolitic black sediment, finely banded at 40° to core axis, minor pyrite.</i>	
	<i>203.0' End of Hole</i>	

DRILLED BY *Morissette A. Drilling*

SIGNED *C. J. Kurylin*
CHESTER J. KURLIN, M.Sc., P.Eng.
CONSULTING GEOLOGIST

DIAMOND DRILL RECORD MISTANGO CONS. RES. LTD.

SAMPLING

HOLE NO. M-86-4 SHEET NO. 1

LATITUDE 2 + 00N DATUM _____ STARTED May 25, 1986
 DEPARTURE 17 + 50E BEARING Due North COMPLETED May 26, 1986
 ELEVATION Lake + 5.0' DIP -70° ULTIMATE DEPTH 203.0'

DEPTH FEET	FORMATION	Sample No	From	To	Width	Ozs Au
21.0-21.5	A 1/2" qtz. veinlet runs @ 55° to core axis minor pyrite	1400			.5	Tr.
86.0-87.3	Coarse agglomerate at contact with black sediment, 3% Py.	1401			1.3	Tr.
133.0-134.4	Coarse agglomerate at contact with black sediment, 2% Py.	1402			1.4	Tr.
159.0-162.0	Coarse agglomerate, slightly siliceous 1% Py (a Character sample)	1403			3.0	Tr.

Drilled by: Morisette D. Drilling

**DUPLICATE COPY
POOR QUALITY ORIGINAL
TO FOLLOW**

DIAMOND DRILL RECORD

MISTANGO CONS. RES. LTD.

HOLE NO. *M-86-4* SHEET NO. *1*

Sampling

LATITUDE *27° 00' N* DATUM _____ STARTED *May 25, 1986*

DEPARTURE *177.50 E* BEARING *DUE NORTH* COMPLETED *May 26, 1986*

ELEVATION *LAKE + 51.0* DIP *-70°* ULTIMATE DEPTH *203.0*

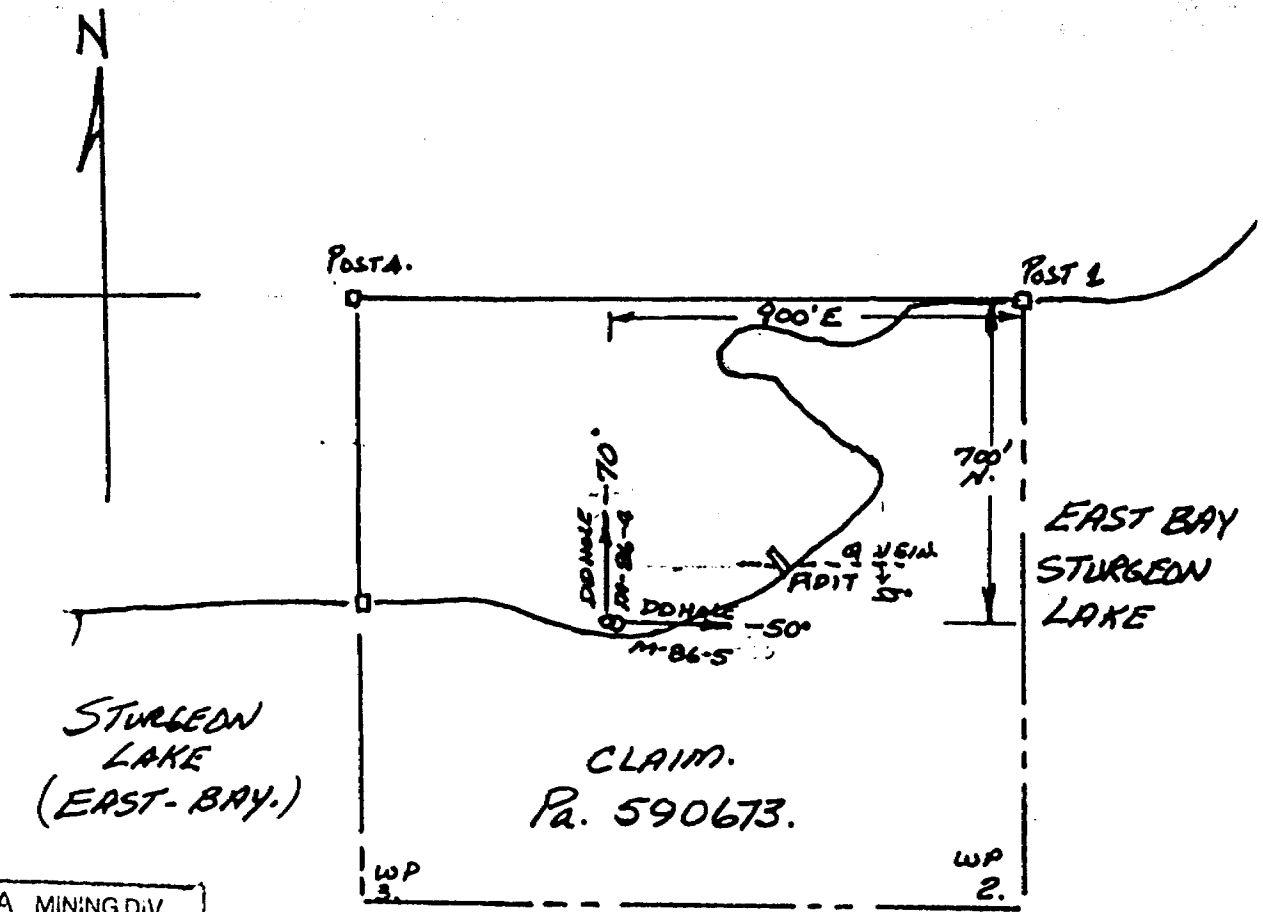
DEPTH FEET	FORMATION	SAMPLE NO	FROM	TO	WIDTH	OZS Au
<i>21.0 - 21.5</i>	<i>a 1/2" grt. violet mica @ 55° to core axis, minor pyrite.</i>	<i>1400</i>			<i>.5</i>	<i>Tr.</i>
<i>86.0 - 87.3</i>	<i>Coarse agglomerate at contact with black sediment, 3% py.</i>	<i>1401</i>			<i>1.3</i>	<i>Tr.</i>
<i>133.0 - 134.4</i>	<i>Coarse agglomerate at contact with black sediment, 2% py.</i>	<i>1402</i>			<i>1.4</i>	<i>Tr.</i>
<i>159.0 - 162.0</i>	<i>Coarse agglomerate, slightly siliceous 1% py. (a character sample)</i>	<i>1403</i>			<i>3.0</i>	<i>Tr.</i>

PATRICIA MINING DIV.
RECEIVED
 JUN 26 1986
 A.M. 7, 8, 9, 10, 11 P.M. 12, 1, 2, 3, 4, 5, 6

CANADIAN GEOLOGICAL SURVEY
 ASSESSMENT FILES
 RESEARCH SERVICE
 AUG 13 1986
 RECEIVED

DRILLED BY *Morissette Drilling*

SIGNED *C. J. Kuryliw*
 CHESTER J. KURLIOW, M.Sc., P. Eng.
 CONSULTING GEOLOGIST



PATRICIA MINING DIV.
RECEIVED
 JUN 26 1986
 A.M. 7 8 9 10 11 12 1 2 3 4 5 6 P.M.

MISTANGO CONSOLIDATED RESOURCES LTD

SKETCH OF LOCATION OF DRILL HOLES

D. DRILL HOLE M-86-4.

@ -70°, DUE NORTH, TO DEPTH OF 203.0'

D. DRILL HOLE M-86-5

@ -50°, DUE EAST, TO DEPTH OF 297.0'

CLAIM 590673
B.Q. Core size
Stored at Mousseau
Camp - Sturgeon Lake

DIAMOND DRILL RECORD

MISTANGO CONS. RES. LTD.

HOLE NO. M-86-5 SHEET NO. 1

LATITUDE 2 + 00N DATUM _____ STARTED May 26, 1986
DEPARTURE 17 + 53E BEARING Due East COMPLETED May 28, 1986
ELEVATION Lake + 5.0' DIP -50° @ 200' -46° ULTIMATE DEPTH 2970'

DEPTH FEET	GEOLOGY	FORMATION	FORMATION
0-4.0	Casing		
4.0-73.5	Fragmental agglomerate-breccia, rhyolite to dacite composition, with angular and rounded fragments of rhyolite. Granodiorite and quartz, The quartz grains are whitish with an equal number of opalescent blue quartz, 2% dissem. pyrite.		
73.5-74.2	Greyish finely banded sediment, banding at 30° to C/A.		
74.2-79.0	Rhyolite-dacite agglomerate breccia, as previous.		
79.0-90.0	Greyish black sediment and agglomerate (Note) the drill hole goes in and out partly along the irregular contact between both rock formations.		
90.0-152.5	Black sediment, finely banded at 20-30° to C/A. The black sediment is rich in carbon (graphite) which would be marked by a strong E-M conductor.		

Drilled by: Morisette D. Drilling

DUPLICATE COPY
FOR QUALITY ORIGINAL
TO FOLLOW

CLAIM 590673

B. D CORE SIZE

STORED AT MOUSSEAU
CAMP - STURGEON LAKEDIAMOND DRILL RECORD
MISTANGO CONS. RES. LTD.

HOLE NO M-86-5 SHEET NO. 1

LATITUDE 2 + 00 N

DATUM

STARTED May 26, 1986

DEPARTURE 17 + 53 E

BEARING

DUE EAST

COMPLETED May 28, 1986

ELEVATION LAKE + 5' 0

DIP

- 50° @

ULTIMATE DEPTH 2970

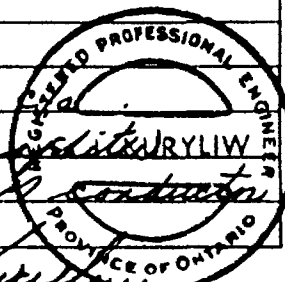
ONTARIO GEOLOGICAL SURVEY
ASSESSMENT FILES
RESEARCH OFFICE

DEPTH FEET	Geology - FORMATION	FORMATION	AUG 18 1986 RECEIVED	FORMATION
0 - 4.0	Casing			
4.0 - 73.5	Fragmental agglomerate - Breccia, rhyolite to Dacite composition, with angular and rounded fragments of rhyolite, granodiorite and quartz. The quartz grains are whitish with an equal number of opalescent blue quartz, 2% dissemin. pyrite.			
73.5 - 74.2	Greyish finely banded sediment, banking at 30° to C/O			
74.2 - 79.0	Rhyolite - Dacite agglomerate breccia, as previous.			
79.0 - 90.0	Greyish black sediment and agglomerate (Note) the drill hole goes in and out partly along the irregular contact between both rock formations			
90.0 - 152.5	Black sediment, finely banded at 20-30° to C/O. The black sediment is rich in carbon (graphite) which would be worked by a strong E-I conductor			

DRILLED BY

Moussette G. Drilling

SIGNED

CHESTER J. KURYLIW, M.Sc., P. Eng.
CONSULTING GEOLOGIST

DIAMOND DRILL RECORD

MISTANGO CONS. RES. LTD.

HOLE NO. M-86-5 SHEET NO. 2

LATITUDE _____ DATUM _____ STARTED _____
 DEPARTURE _____ BEARING _____ COMPLETED _____
 ELEVATION _____ DIP _____ ULTIMATE DEPTH _____

DEPTH FEET	GEOLOGY- FORMATION
152.5-178.6	Rhyolite flow? Lt. greenish grey, fine grained massive with some calcite filled hairline fractures.
178.6-190.0	Rhyolite-dacite agglomerate breccia, 1% Py.
190.0-208.0	Dacite lava flow with some irregular sections of rhyolitic agglomerate.
208.0-212.2	Gabbro dyke altered with a network of calcite filled fractures.
212.2-219.3	Rhyolitic agglomerate, finer grained fragments
219.3-326.3	Gabbro dyke, dark greenish, fine grained, minor calcite minor pyrite.
226.3-238.5	Rhyolite flow with some interbanded rhyolitic tuff. Some rare pyrite.

Drilled by Morisette D. Drilling

DUPLICATE COPY
POOR QUALITY ORIGINAL
TO FOLLOW

DIAMOND DRILL RECORD MISTANGO CONS. RES. LTD.

HOLE NO. 17-86-5 SHEET NO. 2

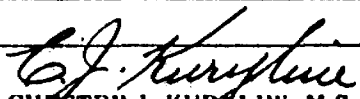
LATITUDE DATUM STARTED

DEPARTURE BEARING COMPLETED

ELEVATION DIP ULTIMATE DEPTH

DEPTH FEET	Geology - FORMATION	FORMATION
152.5 - 178.6	Rhyolite flow? Lt. greenish grey, fine grained, massive with some calcite filled hairline fractures.	
178.6 - 190.0	Rhyolite - Dacite agglomerate breccia, 1 to 24.	
190.0 - 208.0	Dacitic lava flow with some irregular sections of rhyolitic agglomerate.	
208.0 - 212.2	Gabbro dyke altered with a network of calcite filled fractures.	
212.2 - 219.3	Rhyolitic agglomerate, fine grained fragments.	
219.3 - 226.3	Gabbro dyke, dark greenish, fine grained, minor calcite minor pyrite.	
226.3 - 238.5	Rhyolite flow with some interbedded rhyolitic tuff, some rare pyrite.	

DRILLED BY *Mariette S. Drilling*


 SIGNED CHESTER J. KURKLIW, M.Sc., P. Eng.
 CONSULTING GEOLOGIST

DIAMOND DRILL RECORD MISTANGO CONS. RES. LTD.

HOLE NO. M-86-5 SHEET NO. 3

LATITUDE _____ DATUM _____ STARTED _____
 DEPARTURE _____ BEARING _____ COMPLETED _____
 ELEVATION _____ DIP _____ ULTIMATE DEPTH _____

DEPTH FEET	GEOLOGY- FORMATION
------------	-----------------------

238.5-260.5	Black sediment, finely banded at 30°-45° to core axis. High carbon content (graphitic) this formation would be marked by a strong E.M. Conductor, pyrite is relatively rare.
260.5-267.7	Rhyolitic to Dacitic agglomerate, finer grained texture than previously
267.7-278.0	Black sediment, finely banded at 30-45° to core axis, minor pyrite.
278.0-280.5	Rhyolitic flow, Lt. greyish, fine grained.
280.5-284.0	Rhyolitic agglomerate, some coarse rhyolitic fragments.
284.0-297.0	Rhyolitic flow with a few narrow sections of rhyolitic agglomerate.

297.0' END OF HOLE

Drilled by Morisette D. Drilling

DUPLICATE COPY
 POOR QUALITY ORIGINAL
 TO FOLLOW

DIAMOND DRILL RECORD MISTANGO CONS. RES. LTD.

HOLE NO. *M-86-5* SHEET NO. *3*

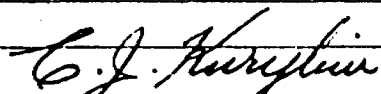
LATITUDE DATUM STARTED

DEPARTURE BEARING COMPLETED

ELEVATION DIP ULTIMATE DEPTH

DEPTH FEET	GEOLOGY
238.5 - 260.5	Black sediment, finely banded at 30°-45° to core axis High carbon content (graphitic) this formation would be marked by a strong E.M. conductor, pyrite is relatively rare.
260.5 - 267.7	Rhyolitic to dacitic agglomerate, fine grained texture than previously
267.7 - 278.0	Black sediment, finely banded at 30-45° to core axis, minor pyrite.
278.0 - 280.5	Rhyolitic flow, lt. greyish, fine grained.
280.5 - 284.0	Rhyolitic agglomerate, some coarse rhyolitic fragments.
284.0 - 297.0	Rhyolitic flow with a few narrow sections of rhyolitic agglomerate.
	297.0 End of hole

DRILLED BY *Mariette L. Drilling*


 SIGNED **CHESTER J. KURLIN, M.Sc., P.Eng.**
 CONSULTING GEOLOGIST

Claim 590673

DIAMOND DRILL RECORD

MISTANGO CONS. RES. LTD.

HOLE NO. M-86-5 SHEET NO. 1

LATITUDE 2 + 00N DATUM _____ STARTED May 26, 1986
 DEPARTURE 17 + 53E BEARING Due East COMPLETED May 28, 1986
 ELEVATION Lake + 5.0' DIP -50° ULTIMATE DEPTH _____

DEPTH FEET	SAMPLING- FORMATION	Sample No.	From	To	Width	Ozs Au
31.5-33.3	(Character sample) slightly silicified agglomerate breccia, 3% Py.	1427			1.8	Tr.
57.5-60.5	(Character sample) Agglomerate, a few narrow qtz. stringers some of which carry streaks of Po. and some specks of chalco.	1428			3.0	Tr.
74.6-77.0	(Character sample) Agglomerate 2% Py. ½% Po. traces of chalco	1429			2.4	Tr.
211.0-212.0	30% silicification 2% Py, 1% Po. Rhyolitic agglomerate, finer grained fragments.	1430			1.0	Tr.

Drilled by: Morisette D. Drilling

DUPLICATE COPY
POOR QUALITY ORIGINAL
TO FOLLOW

CLAIM 590673

DIAMOND DRILL RECORD

MISTANGO CONS. RES. LTD.

HOLE NO. 7-86-5 SHEET NO. 1

LATITUDE 2 + 00 N

DATUM

STARTED May 26, 1986

DEPARTURE 17 + 53 E

BEARING DUG EAST

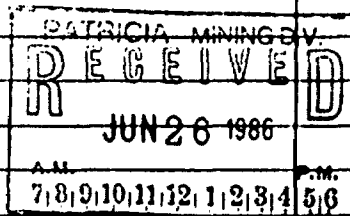
COMPLETED May 28, 1986

ELEVATION LAKE + 5' 0

DIP - 50°

ULTIMATE DEPTH

DEPTH FEET	FORMATION	SAMPLE NO	FROM	TO	WIDTH	OZS Au
	Sampling-					
31.5 - 33.3	(Character sample) slightly silicified agglomerate breccia. 3% py.	1427			1.8	TR.
57.5 - 60.5	(Character sample) Agglomerate, a few narrow gr. stringers some of which carry streaks of py. and some specks of chalc.	1428			3.0	TR.
74.6 - 77.0	(Character sample) Agglomerate 2% py. 1/2% py. traces of chalc.	1429			2.4	TR.
211.0 - 212.0	30% silicification 2% py, 1% py. Rhyolitic agglomerate, fine grained fragments.	1430			1.0	TR.

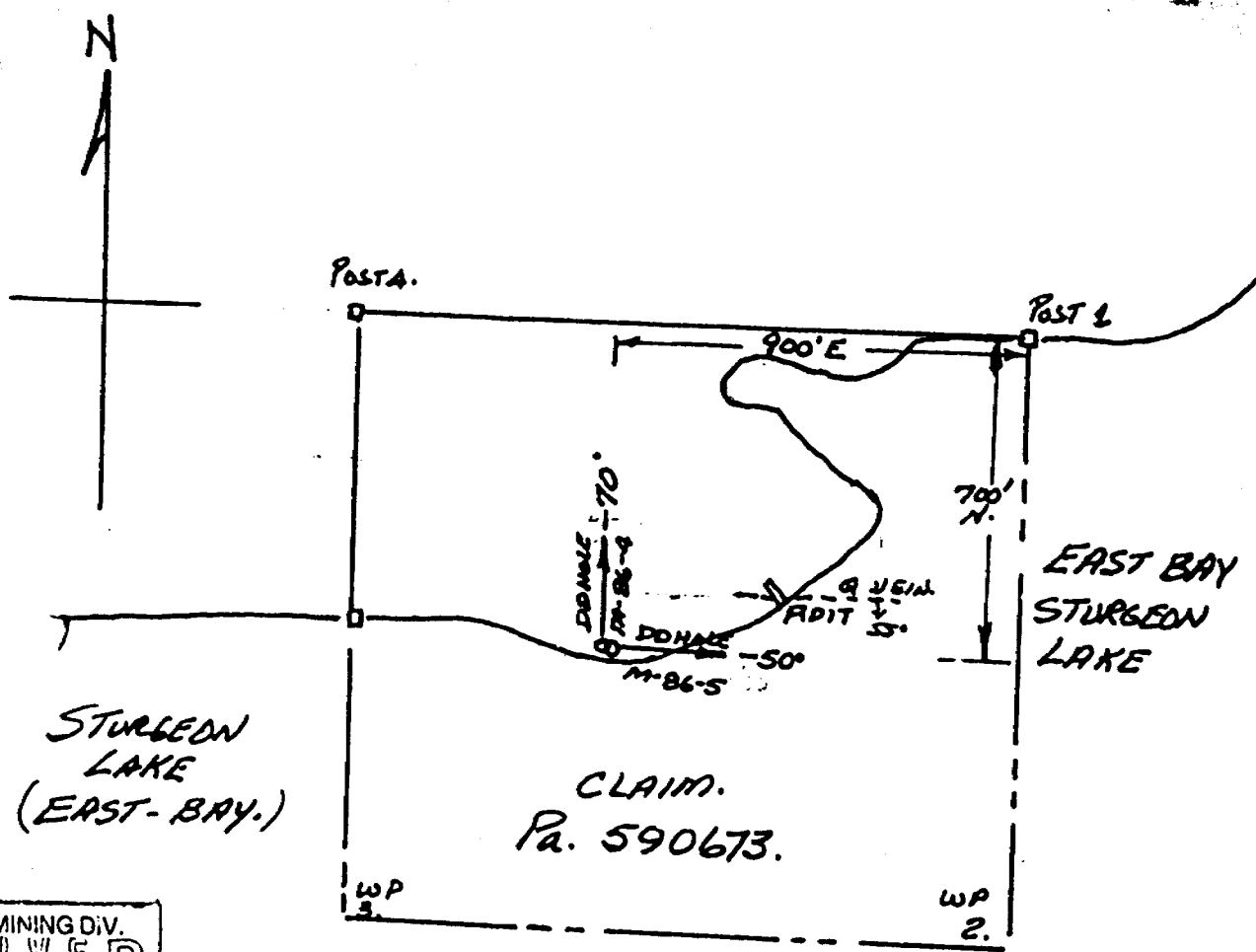


DRILLED BY

Morissette A. Drilling

SIGNED

C. J. Kurylin
CHESTER J. KURLIN, M.Sc., P. Eng.
CONSULTING GEOLOGIST



PATRICIA MINING DIV.
RECEIVED
 JUN 26 1986
 A.M. P.M.
 7 8 9 10 11 12 1 2 3 4 5 6

MISTANGO CONSOLIDATED RESOURCES LTD

SKETCH OF LOCATION OF DRILL HOLES

D. DRILL HOLE M-86-4.

@ -70°, DUE NORTH, TO DEPTH OF 203.0

D. DRILL HOLE M-86-5

@ -50°, DUE EAST, TO DEPTH OF 297.0

Claim 590678
B.Q. Core size
Core stored at Mousseau
Camp - Sturgeon Lake

DIAMOND DRILL RECORD

MISTANGO CONS. RES. LTD.

HOLE NO. M-86-6 SHEET NO. 1

LATITUDE ...500'S. of No. 1 Post 590678 DATUM _____ STARTED June 12, 1986
DEPARTURE 400' W of No. 1 Post 590678 BEARING S-45° W COMPLETED June 15, 1986
ELEVATION Lake + 4.0' Dip Collar @-50°, @200'-44°, @500'-36° ULTIMATE DEPTH 516.0'

DEPTH FEET	GEOLOGY	FORMATION	FORMATION
0-8.0	Overburden		
0-10.0	Casing		
8.0-10.00	Felsic dyke, greyish, fine grained, 2% pyrite, sheared at 50° to core axis. contact at 60° to core axis.		
10.0-61.6	Rhyolitic lapilli tuff, composed of 60% lapilli granular that are buff coloured. The granular are predominately 3-5mm diameter with some fragments up to 7mm diam. The ground mass is rhyolite-carbonate-fuchite (also called mariposite) A few isolated patches of massive pyrite.		
61.6-63.0	Quartz-porphry dyke. greyish, fine grained sericitic with contacts at 60° to C/A (This is a fine grained phase of quartz-porphry dyke).		
63.0-132.0	Lapilli tuff, as previously discribed. Approximately bedded at 60° to C/A.		
132.0-138.0	A qtz. porphyry dyke. highly sericitic, buff coloured. (This is a qtz. porphyry dyke) The contact of this dyke at 132.0 is at 60° to the C/A it then undulgetes in and out of the core to 138.0.		

Drilled by: Morisette D. Drilling

DUPLICATE COPY
POOR QUALITY ORIGINAL
TO FOLLOW

CLAIM 590678

B.G. CORE SIZE

CORE STORED

AT MOUSSERU CAMP

STUBBORN LAKE

DIAMOND DRILL RECORD
MISTANGO CONS. RES. LTD.

HOLE NO. M-56-6 SHEET NO. 1

LATITUDE 500' S OF NO. 1. PAST 590678

DATUM

STARTED JUNE 12, 1986

DEPARTURE 400' W OF NO. 1. PAST 590678

BEARING S-45° W

COMPLETED JUNE 15, 1986

ELEVATION LAKE + 4.0

DIP COLLAR @ -50°, @ 200' - 44° @ 500' - 36°

ONTARIO GEOLOGICAL SURVEY
ASSESSMENT FILE # 576.0
ULTIMATE DEPOSIT RESEARCH OFFICE

DEPTH FEET	Geology	FORMATION	FORMATION
0-8.0	Overburden		AUG 18 1986
0-10.0	Casing		RECEIVED
8.0-10.0	Felsic dyke, greyish, fine grained, 2% pyrite, steeped at 50° to core axis, contact at 60° to core axis.		
10.0-41.6	Rhyolitic lapilli tuff, composed of 60% lapilli granules that are buff coloured. The granules are predominately 3-5 mm diameter with some fragments up to 7 mm diam. The ground mass is rhyolite-carbonate-fuchsite (also called manisovite). A few isolated patches of massive pyrite.		
41.6-63.0	Quartz-porphry dyke, greyish, fine grained, sericitic with contacts at 60° to C/A (this is a fine grained phase of quartz-porphry dyke)		
63.0-132.0	Lapilli tuff, as previously described, approximately bedded at 60° to C/A.		
132.0-138.0	a Qtz porphyry dyke, highly sericitic, buff colored (this is a Qtz porphyry dyke) The contact of this dyke at 132.0 is at 60° to the C/A it then undulates		

DRILLED BY

Morissette D. Drilling

SIGNED

CHESTER J. KURYLIW, M.Sc., P.Eng.
CONSULTING GEOLOGIST

DIAMOND DRILL RECORD MISTANGO CONS. RES. LTD.

HOLE NO. M-86-6 SHEET NO. 2

LATITUDE _____ DATUM _____ STARTED _____
 DEPARTURE _____ BEARING _____ COMPLETED _____
 ELEVATION _____ DIP _____ ULTIMATE DEPTH _____

DEPTH FEET	GEOLOGY: FORMATION FORMATION
138.0-169.0	Lapilli tuff as previously described.
169.0-172.6	Quartz prophyry dyke, fine grained, buff, sericitic
172.6-175.4	Carb'd lapilli tuff, its contacts with the quartz porphyry run irregularly at about 15° to the C/A.
175.4-196.5	Quartz porphyry dyke, lt. buff grey sericitic.
196.5-197.5	A talcose fault that runs at 15° to the C/A filled with qtz. carbonate rubble, minor talc, some mariposite.
197.5-244.5	Lapilli tuff similar to the description near the start of the drill hole.
244.5-244.9	Quartz porphyry dyke, fine grained, sericitic, contacts at 60° to C/A.

Drilled by: Morisette D. Drilling

DUPLICATE COPY
 POOR QUALITY ORIGINAL
 TO FOLLOW

DIAMOND DRILL RECORD MISTANGO CONS. RES. LTD.

HOLE NO. *M-86-6* SHEET NO. *2*

LATITUDE DATUM STARTED

DEPARTURE BEARING COMPLETED

ELEVATION DIP ULTIMATE DEPTH

DEPTH FEET	FORMATION	FORMATION
	<i>Geology:</i>	
	<i>in and out of the core to 138.0</i>	
<i>138.0 - 169.0</i>	<i>Lapilli tuff as previously described.</i>	
<i>169.0 - 172.6</i>	<i>Quartz porphyry dyke, fine grained, buff, sericitic</i>	
<i>172.6 - 175.4</i>	<i>Dark'd lapilli tuff, its contacts with the quartz porphyry run irregularly at about 15° to the c/a</i>	
<i>175.4 - 196.5</i>	<i>Quartz porphyry dyke, lt. buff grey, sericitic.</i>	
<i>196.5 - 197.5</i>	<i>a talcose fault that runs at 15° to the c/a filled with qtz. carbonate rubble, minor talc, some mariposite</i>	
<i>197.5 - 244.5</i>	<i>Lapilli tuff similar to the description near the start of the drill hole.</i>	
<i>244.5 - 244.9</i>	<i>Quartz porphyry dyke, fine grained, sericitic, contacts at 60° to c/a.</i>	

DRILLED BY *Monaette S. Drilling*


 SIGNED CHESTER J. KURLIOW, M.Sc., P. Eng.
 CONSULTING GEOLOGIST

DIAMOND DRILL RECORD

MISTANGO CONS. RES. LTD.

HOLE NO. M-86-6 SHEET NO. 3

LATITUDE _____ DATUM _____ STARTED _____
 DEPARTURE _____ BEARING _____ COMPLETED _____
 ELEVATION _____ DIP _____ ULTIMATE DEPTH _____

DEPTH FEET	GEOLOGY: FORMATION
244.0-282.2	Lapilli tuff, buff with minor mariposite, similar to previous description.
282.2-283.0	Quartz porphyry dyke, contacts at 60° to C/A, greyish, fine grained, sericitic.
283.0-314.7	Lapilli tuff, with buff lapilli, most of which are 3-5mm in diam. with some lapilli up to 8mm diam. some graded bedding occurs in the lapilli granules, some of which have original structures similar to cross bedding at 285.0 feet. Bedding at 65° to C/A.
314.7-315.7	Quartz porphyry dyke, greyish, fine grained, sericitic, 5% qtz. phenocrysts, 4mm diam.
315.7-370.7	Lapilli tuff with 5-10% blebs, bands and blocks of greyish qtz. porphyry that intrudes the lapilli tuff to form an agglomerate like appearance.

Drilled by: Morisette D. Drilling

**DUPLICATE COPY
 POOR QUALITY ORIGINAL
 TO FOLLOW**

DIAMOND DRILL RECORD MISTANGO CONS. RES. LTD.

HOLE NO. *M-86-6* SHEET NO. *3*


LATITUDE DATUM STARTED

DEPARTURE BEARING COMPLETED

ELEVATION DIP ULTIMATE DEPTH

DEPTH FEET	Geology:	FORMATION	FORMATION
<i>244.9 - 282.2</i>	<i>Lapilli tuff, buff with minor mariposite, similar to previous description.</i>		
<i>282.2 - 283.0</i>	<i>Quartz porphyry dyke, contacts at 60° to 64°, greyish, fine grained, sericitic.</i>		
<i>283.0 - 314.7</i>	<i>Lapilli tuff, with buff lapilli, most of which are 3-5 mm. in diam. with some lapilli up to 8 mm. diam. some graded bedding occurs in the lapilli granules, some of which have original structures similar to cross bedding at 285.0 feet. Bedding at 65° to 64°.</i>		
<i>314.7 - 315.7</i>	<i>Quartz porphyry dyke, greyish, fine grained, sericitic, 5% to 2% phenocrysts, 4 mm. diam.</i>		
<i>315.7 - 370.7</i>	<i>Lapilli tuff with 5-10% blebs, bands, and blocks of greyish gte. porphyry that intruded the lapilli tuff to form an agglomerate like appearance.</i>		

DRILLED BY *Maisette D. Drilling*


 SIGNED **CHESTER J. KURYLOW, M.Sc., P.Eng.**
 CONSULTING GEOLOGIST

DIAMOND DRILL RECORD
MISTANGO CONS. RES. LTD.

HOLE NO. M-86-6 SHEET NO. 4

LATITUDE _____ DATUM _____ STARTED _____
DEPARTURE _____ BEARING _____ COMPLETED _____
ELEVATION _____ DIP _____ ULTIMATE DEPTH _____

GEOLOGY:

DEPTH FEET	FORMATION	FORMATION
370.7-406.2	Dioritic dyke - greyish fine grained.	
406.2-516.0	Lapilli tuff as previously described with 10-15% blebs, irregular patches and blocks of intruding grey qtz. porphy No evident increase in qtz. carbonate alt'n.	

516.0' END OF HOLE

Drilled by: Morisette D. Drilling

DUPLICATE COPY
POOR QUALITY ORIGINAL
TO FOLLOW

DIAMOND DRILL RECORD MISTANGO CONS. RES. LTD.

HOLE NO. *M. 86-6* SHEET NO. *4*

LATITUDE DATUM STARTED
DEPARTURE BEARING COMPLETED
ELEVATION DIP ULTIMATE DEPTH

Geology:

DEPTH FEET	FORMATION	FORMATION
<i>370.7 - 406.2</i>	<i>Dioritic dyke - greyish, fine grained.</i>	
<i>406.2 - 516.0</i>	<i>Lapilli tuff as previously described with 10-15% clasts, irregular patches and blocks of intruding grey gr. porphyry. No evident increase in gr. Carbonate alt'm</i>	
	<i>516.0' end of hole</i>	

PATRICIA MIPING D.V.
RECEIVED
JUN 26 1986
A.M. P.M.
7 8 9 10 11 12 1 2 3 4 5 6

DRILLED BY *Monette D. Drilling*

SIGNED *C. J. Kurylow*
CHESTER J. KURYLOW, M.Sc., P.Eng.
CONSULTING GEOLOGIST

DIAMOND DRILL RECORD MISTANGO CONS. RES. LTD.

SAMPLING:

HOLE NO. M-86-6 SHEET NO. 1

LATITUDE _____ DATUM _____ STARTED _____
 DEPARTURE _____ BEARING _____ COMPLETED _____
 ELEVATION _____ DIP _____ ULTIMATE DEPTH _____

DEPTH FEET	FORMATION	Sample No.	From	To	Width	Ozs Au
15.8-17.1	Lapilli tuff, 3% Py in patches, 5% qtz. carb. alt'n	1431			1.3	
37.5-40.0	4% pyrite as massive replacements of lapilli and groundmass. 5% qtz. carb. alt'n, some hairline dark grey qtz. fractures run at 5° -10° to core axis.	1432			2.5	
40.0-41.3	Lapilli tuff, a streak of massive pyrite 3" long with some grey qtz. along h hairline fractures in the pyrite. The massive Py. runs at 50° to the C/A on one side and 25° to the C/A on the other side.	1433			1.3	
48.4-49.3	Lapilli tuff, a 1/2" qtz. carb. veinlet at 30° to C/A, carries streaks of Py and Po. Some larger blebs of silicification with heavy Po. Traces of chalco in veinlet.	1434			.9	

Drilled by: Morisette D. Drilling

DUPLICATE COPY
 FOUR QUALITY ORIGINAL
 TO FOLLOW

DIAMOND DRILL RECORD MISTANGO CONS. RES. LTD.

Sampling:

HOLE NO. *H-56-6* SHEET NO. *1*

LATITUDE DATUM STARTED

DEPARTURE BEARING COMPLETED

ELEVATION DIP ULTIMATE DEPTH

DEPTH FEET	FORMATION	SAMPLE NO.	FROM	TO	WIDTH	OZS Au
<i>15.8- 17.1</i>	<i>Lapilli tuff, 3% py. in patches. 5% gtz. carb. alt'n.</i>	<i>1431</i>			<i>1.3</i>	
<i>37.5- 40.0</i>	<i>4% pyrite as massive replacement of lapilli and groundmass. 5% gtz. carb. alt'n, some lamination dark grey gtz. fractured over at 5° - 10° to cba axis.</i>	<i>1432</i>			<i>2.5</i>	
<i>40.0- 41.3</i>	<i>Lapilli tuff, a streak of massive pyrite 3" long with some grey gtz. along lamination fractures in the pyrite. The massive py. runs at 50° to the cba on one side and 25° to the cba on the other side.</i>	<i>1433</i>			<i>1.3</i>	
<i>48.4- 49.3</i>	<i>Lapilli tuff, a 1/2" gtz. carb. veinlet at 30° to cba, carries streaks of py. and po. some large blebs of silicification with heavy po. traces of chalco veinlet.</i>	<i>1434</i>			<i>?</i>	

DRILLED BY *Moisette D. Drilling*

SIGNED *Chester J. Kuyliw*
CHESTER J. KUYLIW, M.Sc., P.Eng.
CONSULTING GEOLOGIST

DIAMOND DRILL RECORD

MISTANGO CONS. RES. LTD.

HOLE NO. M-86-6 SHEET NO. 2

SAMPLING

LATITUDE DATUM STARTED

DEPARTURE BEARING COMPLETED

ELEVATION DIP ULTIMATE DEPTH

DEPTH FEET	FORMATION	Sample No.	From	To	Width	Ozs Au
51.3-54.8	Lapilli tuff with streaks of massive pyrite, at 2" and 1/2" wide which run at 60° to the C/A parallel to the approximate bedding, some nodules of massive pyrite with trace of chalcocite occur in parts. A total of 10% py. in this sample	1435			3.5	
69.5-70.8	7% qtz. carb in narrow stringers at 60° to C/A, approximately parallel to bedding	1436			1.3	
74.4-75.9	Lapilli tuff, A 3/4" streak of massive pyrite along bedding. A narrow qtz. carb. stringer follows the core	1437			1.5	
91.0-93.0	Lapilli tuff - A 1" streak of massive py. with a qtz. carb. matrix, some streaks of partial replacement of lapilli granules with pyrite, a total of 7% py. A clear qtz. filled fracture 1/2" thick runs at 20° to C/A.	1440			.7	

Drilled by: Morisette D. Drilling

DUPLICATE COPY
POOR QUALITY ORIGINAL
TO FOLLOW

DIAMOND DRILL RECORD MISTANGO CONS. RES. LTD.

HOLE NO. 86-6 SHEET NO. 2

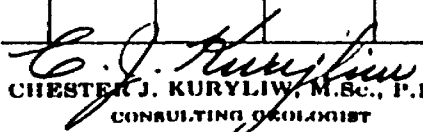
Sampling
LATITUDE
DEPARTURE
ELEVATION

DATUM
BEARING
DIP

STARTED
COMPLETED
ULTIMATE DEPTH

DEPTH FEET	FORMATION	SAMPLE NO	FROM	TO	WIDTH	OZS Au
51.2-54.8	Lapilli tuff with streaks of massive pyrite, at 2" and 1/2" wide which run at 60° to the c/a parallel to the approximate bedding, some nodules of massive pyrite with traces of chalcocite occur in parts, a total of 10% py. in this sample.	1435			3.5	
69.5-70.8	7% qtz. carb. in narrow stringer at 60° to c/a, approximately parallel to bedding.	1436			1.3	
74.4-75.9	Lapilli tuff, a 3/4" streak of massive pyrite along bedding. A narrow qtz. carb. stringer follows the core.	1437			1.5	
91.0-93.0	Lapilli tuff - a 1" streak of massive py. with a qtz. carb. matrix, some streaks of partial	1438			2.0	

DRILLED BY Morissette Drilling


 CHESTER J. KURYLIW, M.Sc., P. Eng.
 CONSULTING GEOLOGIST

DIAMOND DRILL RECORD MISTANGO CONS. RES. LTD.

HOLE NO. M-86-6 SHEET NO. 3

SAMPLING
 LATITUDE DATUM STARTED
 DEPARTURE BEARING COMPLETED
 ELEVATION DIP ULTIMATE DEPTH

DEPTH FEET	FORMATION	Sample No.	From	To	Width	Ozs Au
99.2-101.0	Lapilli tuff, a 1" streak of massive py at 60° to C/A with minor associated qtz. carb. alt'n, some partial replacement of lapilli with nodules of py. a total of 6% Py.	1439			1.8	
133.0-133.7	Lapilli tuff with a 1" streak of 50% pyrite along the approximate bedding	1440			.7	
141.6-143.6	Lapilli tuff - 10% Py. that occurs as a partial replacement of lapilli nodules.	1441			2.0	

Drilled by: Morisette D. Drilling

DUPLICATE COPY
 POOR QUALITY ORIGINAL
 TO FOLLOW

DIAMOND DRILL RECORD MISTANGO CONS. RES. LTD.

HOLE NO. *M-86-6* SHEET NO. *3*

Sampling

LATITUDE DATUM STARTED

DEPARTURE BEARING COMPLETED

ELEVATION DIP ULTIMATE DEPTH

DEPTH FEET	FORMATION	SAMPLE NO.	FROM	TO	WIDTH	OZS. Au
	<i>replacement of lapilli granules with pyrite, a total of 7% py. A clear gte. filled fracture 1/4" Thick occurs at 60° to c/a.</i>					
<i>99.2-101.0</i>	<i>Lapilli tuff, a 1" streak of massive py. at 60° to c/a with minor associated gte. carb. att'n, some partial replacement of lapilli with nodules of py. a total of 6% py.</i>	<i>1439</i>			<i>1.8</i>	
<i>133.0-133.7</i>	<i>Lapilli tuff with a 1" streak of 50% pyrite along the approximate bedding.</i>	<i>1440</i>			<i>.7</i>	
<i>141.6-143.6</i>	<i>Lapilli tuff. 10% py. that occurs as a partial replacement of lapilli nodules.</i>	<i>1441</i>			<i>2.0</i>	

DRILLED BY *Morissette D. Drilling*


 SIGNED **CHESTER J. KURYLOW, M.Sc., P. Eng.**
 CONSULTING GEOLOGIST

DIAMOND DRILL RECORD

MISTANGO CONS. RES. LTD.

HOLE NO. M-86-6 SHEET NO. 4

SAMPLING

LATITUDE DATUM STARTED

DEPARTURE BEARING COMPLETED

ELEVATION DIP ULTIMATE DEPTH

DEPTH FEET	FORMATION	Sample No.	From	To	Width	Ozs Au
143.6-146.0	Lapilli tuff, 40% py. largely a replacement nodules also some mineralization of ground mass. The groundmass is 50% qtz. carb. (This mineralization appears to occur structurally in an embayment of the previous sericitic qtz. porphyry)	1442			2.4	
154.2-157.2	Lapilli tuff with a qtz. carb. vein that runs along half the core and carries a few rare specks of chalco 2% Py. in the adjoining lapilli tuff.	1443			3.0	
157.2-158.2	Lapilli tuff with a 1/2" streak of massive pyrite in a qtz. carb. vein that follows the core. The massive Py. streak carries 1% streaks of a dark fine grained purplish-grey mineral that is most likely galena but may be either molybdenite or tetrahenite.	1444			1.0	

Drilled by: Morisette D. Drilling

DUPLICATE COPY
POOR QUALITY ORIGINAL
TO FOLLOW

DIAMOND DRILL RECORD MISTANGO CONS. RES. LTD.

HOLE NO. *M 86-6* SHEET NO. *4*

Sampling

LATITUDE

DATUM

STARTED

DEPARTURE

BEARING

COMPLETED

ELEVATION

DIP

ULTIMATE DEPTH

DEPTH FEET	FORMATION	SAMPLE NO.	FROM	TO	WIDTH	OZS. Au
143.6 - 146.0	Lapilli tuff. 40% py. largely a replacement of lapilli nodules also some mineralization of ground mass. The ground mass is 50% gtz. carb. (This mineralization appears to occur structurally in an embayment of the previous sericitic gtz. porphyry)	1442			2.4	
154.2 - 157.2	Lapilli tuff with a gtz. carb. vein that runs along half the core and carries a few rare specks of chalc. 2% PY. in the adjoining lapilli tuff	1443			3.0	
157.2 - 158.2	Lapilli tuff with a 1/2" streak of massive pyrite in a gtz. carb. vein that follows the core. The massive py. streak carries 1% streaks of a dark fine grained purplish-grey mineral. that is	1444			1.0	Ag.

DRILLED BY *Murielle D. Drilling*

SIGNED

C. J. Kurylaw
CHESTER J. KURYLAU, M.Sc., P. Eng.
CONSULTING GEOLOGIST

DIAMOND DRILL RECORD

MISTANGO CONS. RES. LTD.

HOLE NO. M-86-6 SHEET NO. 5

SAMPLING

LATITUDE _____ DATUM _____ STARTED _____
 DEPARTURE _____ BEARING _____ COMPLETED _____
 ELEVATION _____ DIP _____ ULTIMATE DEPTH _____

DEPTH FEET	FORMATION	Sample No.	From	To	Width	Ozs. Au
158.2-159.2	Lapilli tuff, a $\frac{1}{2}$ " streak of massive Py. along a clear greyish qtz. carb. veinlet runs along the core and carries 1% streaks of fine greyish mineral galena? as in previous sample.	1445			1.0	
159.8-161.0	Lapilli Tuff, 30% qtz. carb. alt'n 7% Py	1446			1.8	
161.0-163.1	Lapilli tuff, 5% carbonitized. 10% pyrite in masses	1447			2.1	
163.1-166.0	Lapilli tuff - 15% qtz. carb'd 3% Py	1448			2.9	
166.0-168.9	Lapilli tuff, 20% carb'd 3% Py	1449			2.9	

Drilled by: Morisette D. Drilling

DUPLICATE COPY
FOOR QUALITY ORIGINAL
TO FOLLOW

DIAMOND DRILL RECORD MISTANGO CONS. RES. LTD.

HOLE NO. *M-86-6* SHEET NO. *5*

Sampling

LATITUDE DATUM STARTED

DEPARTURE BEARING COMPLETED

ELEVATION DIP ULTIMATE DEPTH

DEPTH FEET	FORMATION	SAMPLE NO.	FROM	TO	WIDTH	OZS Au
	<i>most likely galena but may be either molybdenite or tetrahedite</i>					
<i>158.2-159.2</i>	<i>Lapilli tuff, a 1/2" streak of massive py. along a clean quartzite grt. carb. veinlet near along the core and carries 1% streaks of fine quartz minerals galena? as in previous sample</i>	<i>1445</i>			<i>1.0</i>	<i>Ag</i>
<i>159.2-166.0</i>	<i>Lapilli tuff, 30% grt. carb. alt'w 7% PY.</i>	<i>1446</i>			<i>1.8</i>	
<i>161.0-163.1</i>	<i>Lapilli tuff, 5% carbonized, 10% pyrite in masses.</i>	<i>1447</i>			<i>2.1</i>	
<i>163.1-166.0</i>	<i>Lapilli tuff - 15% grt. carb'd 3% PY.</i>	<i>1448</i>			<i>2.9</i>	
<i>166.0-168.9</i>	<i>Lapilli tuff, 20% carb'd 3% PY.</i>	<i>1449</i>			<i>2.9</i>	

DRILLED BY *Moisette D. Drilling*

SIGNED *C. J. Kuryll*
CHESTER J. KURYLL, M.Sc., P. Eng.
CONSULTING GEOL. EXPERT

DIAMOND DRILL RECORD MISTANGO CONS. RES. LTD.

SAMPLING

HOLE NO. M-86-6 SHEET NO. 6

LATITUDE _____ DATUM _____ STARTED _____
 DEPARTURE _____ BEARING _____ COMPLETED _____
 ELEVATION _____ DIP _____ ULTIMATE DEPTH _____

DEPTH FEET	FORMATION	Sample No.	From	To	Width	Ozs Au
172.6-175.4	Lapilli tuff, 50% carb'd, 1% Py. traces of chalco.	1450			2.8	
196.5-197.5	Quartz carb. rubble along a fault that runs at about 15° to C/A.	1451			2.0	
197.5-199.7	Lapilli tuff with a qtz. carb. veinlet that runs at 15° to C/A some green mariposite, 2% Py. trace of chalco	1452			2.2	
216.0-216.5	A 1" streak of 60% pyrite replacing nodules across the core	1453			.5	
217.3-219.2	Lapilli tuff, 4% pyrite	1454			1.9	
220.9-222.2	Lapilli tuff, 10% qtz. carb. stringers one stringer runs right along the core, 1% Py.	1455			1.3	

Drilled by: Morisette D. Drilling

**DUPLICATE COPY
POOR QUALITY ORIGINAL
TO FOLLOW**

DIAMOND DRILL RECORD MISTANGO CONS. RES. LTD.

HOLE NO. *M 86-6* SHEET NO. *6*

Sampling

LATITUDE DATUM STARTED

DEPARTURE BEARING COMPLETED

ELEVATION DIP ULTIMATE DEPTH

DEPTH FEET	FORMATION	SAMPLE NO.	FROM	TO	WIDTH	OZS Au
172.6 - 175.4	Lapilli tuff, 50% carb'd, 1% py. traces of Chalc.	1450			2.8	
196.5 - 197.5	Quartz carb. rubble along a fault that runs at about 15° to 9/10.	1451			2.0	
197.5 - 199.7	Lapilli tuff with a grt. carb. mineral that runs at 15° to 9/10. some green malapelite, 2% py. Traces of Chalc.	1452			2.2	
216.0 - 216.5	A 1" streak of 60% pyrite replacing nodules across the core.	1453			.5	
217.3 - 219.2	Lapilli tuff, 4% pyrite.	1454			1.9	
220.9 - 223.7	Lapilli tuff, 10% grt. carb. stringer one stringer runs right along the core, 1% py.	1455			1.3	

DRILLED BY *Murielle S. Dilling*


 CHESTER J. KURYLIW, M.Sc., P.Eng.
 CONSULTING GEOLOGIST

DIAMOND DRILL RECORD MISTANGO CONS. RES. LTD.

HOLE NO. M-86-6 SHEET NO. 7

LATITUDE _____ DATUM _____ STARTED _____
 DEPARTURE _____ BEARING _____ COMPLETED _____
 ELEVATION _____ DIP _____ ULTIMATE DEPTH _____

DEPTH FEET	SAMPLING	FORMATION	Sample No.	From	To	Width	Ozs. Au
250.8-251.5	A 2" streak of 50% massive pyrite in a greyish qtz. carb. groundmass.		1456			.7	
256.0-257.3	Lapilli tuff, Two 1" qtz. carb. veins at 70° to C/A minor Py		1457			1.3	
261.3-261.9	A 1/4" qtz. carb. veinlet runs at 30° to C/A 1% Py		1458			.6	
277.0-277.9	20% bluish qtz. carb. at 25° to C/A 2% Py.		1459			.9	
301.3-304.8	A 3/4" qtz. veinlet runs along the core with a trace of chalco, minor pyrite		1460			3.5	
206.3-206.9	Lapilli tuff, a 1/4" streak of massive Py. along the bedding 10% Py. in sample		1461			.6	

Drilled by: Morisette D. Drilling

DUPLICATE COPY
 POOR QUALITY ORIGINAL
 TO FOLLOW

DIAMOND DRILL RECORD MISTANGO CONS. RES. LTD.

HOLE NO. *H86-6* SHEET NO. *7*

Sampling

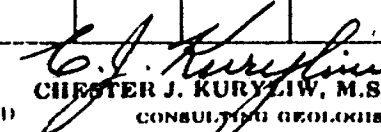
LATITUDE DATUM STARTED

DEPARTURE BEARING COMPLETED

ELEVATION DIP ULTIMATE DEPTH

DEPTH FEET	FORMATION	SAMPLE NO.	FROM	TO	WIDTH	OZS Au
<i>250.8 - 251.5</i>	<i>Sampling: a 2" streak of 50% massive pyrite in a greyish gtz. carb. groundmass.</i>	<i>1456</i>			<i>.7</i>	
<i>256.0 - 257.3</i>	<i>Lapilli tuff. Two 1" gtz. carb. veins at 70° to c/a, minor py.</i>	<i>1457</i>			<i>1.3</i>	
<i>261.3 - 261.9</i>	<i>a 1/2" gtz. carb. veinlet seen at 30° to q/a, 1% py.</i>	<i>1458</i>			<i>.6</i>	
<i>277.0 - 277.9</i>	<i>20% bluish gtz. carb. at 25° to c/a 2% py.</i>	<i>1459</i>			<i>.9</i>	
<i>301.3 - 304.8</i>	<i>a 3/4" gtz. veinlet seen along the core with a trace of chalc. minor pyrite.</i>	<i>1460</i>			<i>3.5</i>	
<i>306.3 - 306.9</i>	<i>Lapilli tuff. a 1/2" streak of massive py. along the bedding. 10% py. in sample.</i>	<i>1461</i>			<i>.6</i>	

DRILLED BY *Monsieur D. Drilling*


 CHESTER J. KURYLIW, M.Sc., P. Eng.
 CONSULTING GEOLOGIST

DIAMOND DRILL RECORD

MISTANGO CONS. RES. LTD.

SAMPLING

HOLE NO. M-86-6 SHEET NO. 8

LATITUDE _____

DATUM _____

STARTED _____

DEPARTURE _____

BEARING _____

COMPLETED _____

ELEVATION _____

DIP _____

ULTIMATE DEPTH _____

DEPTH FEET	FORMATION	Sample No.	From	To	Width	OZS Au
345.1-345.8	A 1/2" grey qtz. veinlet that runs at 20° to C/A. The vein carries several coarse patches of chalco pyrite	1462				.7
370.3-370.8	A grey carb. vein minor Py a few specks of chalco.	1463				.5
406.2-409.3	Lapilli tuff with 25% qtz. carb. alt'n minor pyrite.	1464				3.1
413.8-414.7	Two 1/2" qtz. stringers, taht run at 60° to C/A, a few specks of chalco.	1465				.9

Drilled by: Morisette D. Drilling

DUPLICATE COPY
POOR QUALITY ORIGINAL
TO FOLLOW

DIAMOND DRILL RECORD MISTANGO CONS. RES. LTD.

HOLE NO. *H-86-6* SHEET NO. *8*

Sampling

LATITUDE DATUM STARTED
 DEPARTURE BEARING COMPLETED
 ELEVATION DIP ULTIMATE DEPTH

DEPTH FEET	FORMATION	SAMPLE NO.	FROM	TO	WIDTH	OZS Au	
<i>345.1-345.8</i>	<i>A 1/4" grey gtz. veinlet that runs at 20° to 1/4. The vein carries several coarse patches of chalc. pyrite.</i>	<i>1462</i>			<i>.7</i>		
<i>370.3-370.8</i>	<i>A grey carb. vein, minor P.Y. a few specks of chalc.</i>	<i>1463</i>			<i>.5</i>		
<i>406.2-409.3</i>	<i>Lapilli tuff with 25% gtz. carb. alt'n, minor pyrite.</i>	<i>1464</i>			<i>3.1</i>		
<i>413.8-414.7</i>	<i>Two 1/2" gtz. stringers that run at 60° to 1/4, a few specks of chalc.</i>	<i>1465</i>			<i>.9</i>		

ONTARIO GEOLOGICAL SURVEY
ASSESSMENT FILES
RESEARCH OFFICE

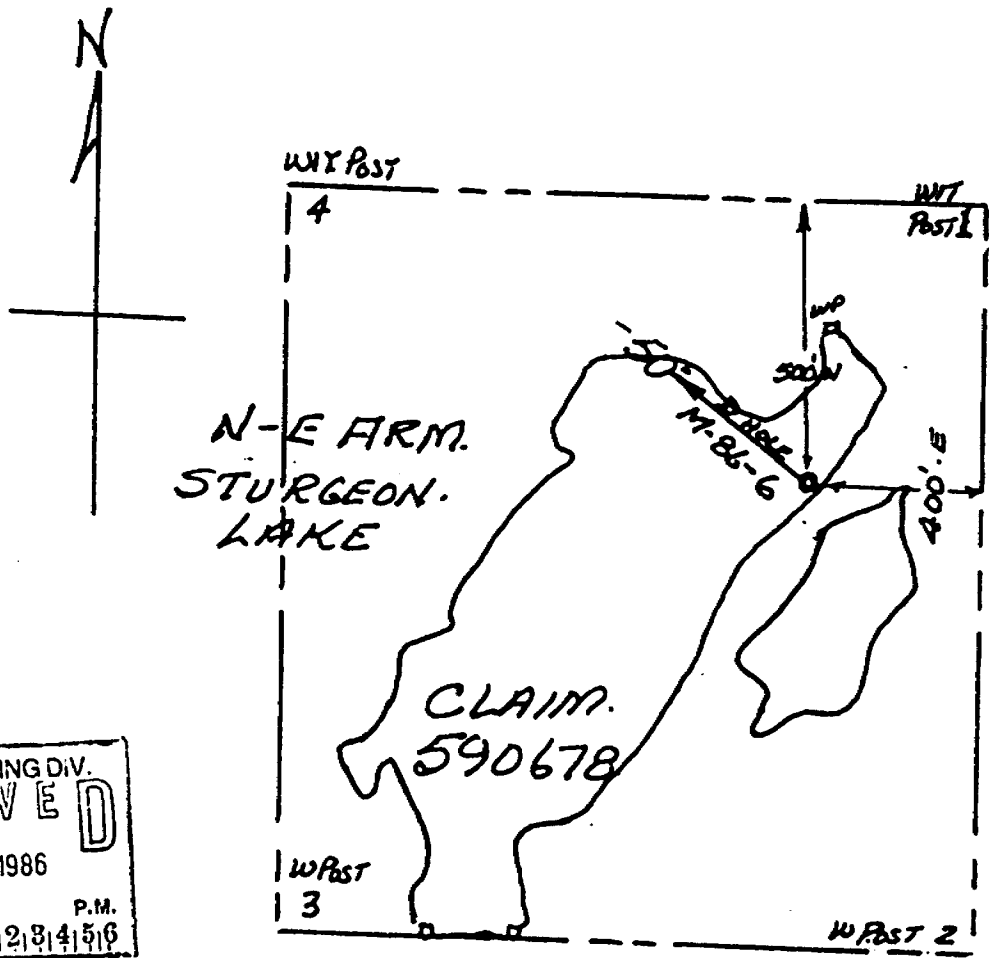
AUG 18 1986

RECEIVED

PATRICIA MINING DIV.
RECEIVED
 JUN 26 1986
 A.M. P.M.
 7 8 9 10 11 12 1 2 3 4 5 6

DRILLED BY *Morissette J. Drilling*

SIGNED *C. J. Kuryliw*
 CHESTER J. KURLIOW, M.Sc., P. Eng.
 CONSULTING GEOLOGIST



PATRICIA MINING DIV.
RECEIVED
 JUN 26 1986
 A.M. 7, 8, 9, 10, 11, 12, 1, 2, 3, 4, 5, 6 P.M.

MISTANGO CONSOLIDATED. RES. LTD.

SKETCH OF LOCATION OF DRILL HOLE
 M-86-6

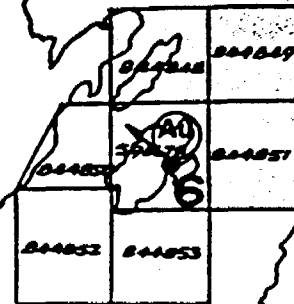
D. DRILL HOLE M-86-6
 @ -50°, N-W BEARING,
 TO DEPTH OF 516' 0



52J02SE9261 37 SQUAW LAKE

900

PATRICIA MINING DIV.
RECEIVED
JUN 26 1986
A.M. P.M.
7 8 9 10 11 12 1 2 3 4 5 6



STURGEON LAKE

STEEP ROCK

Northwest Arm

STEEP ROCK

PLAN OF 1986 D. DRILLING

MISTANGO CONS. RES.

CLAIM GROUP

STURGEON LAKE, ONT.

(Au)

King Bay

(Au)

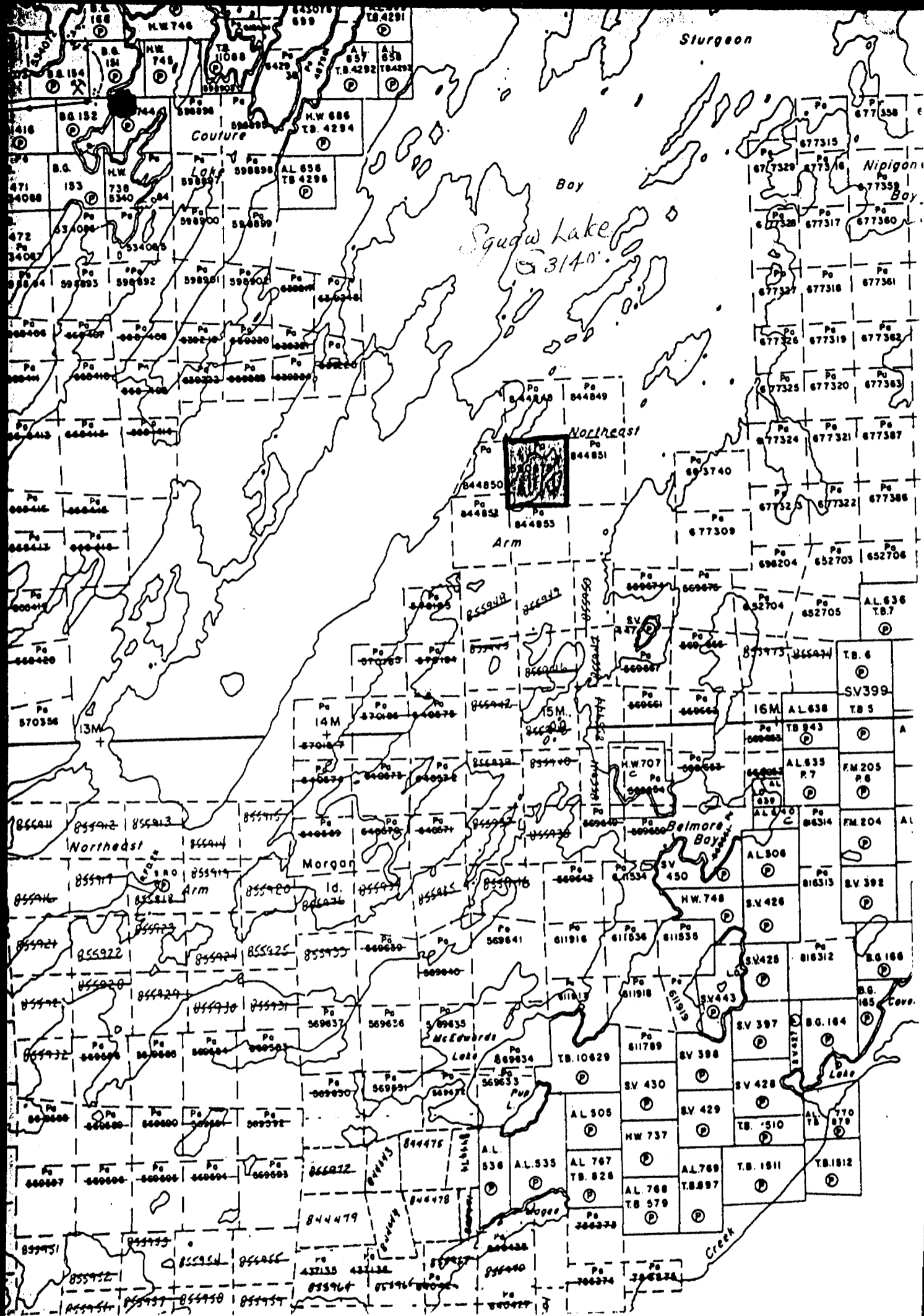
KERR ADD.

Coveney Island

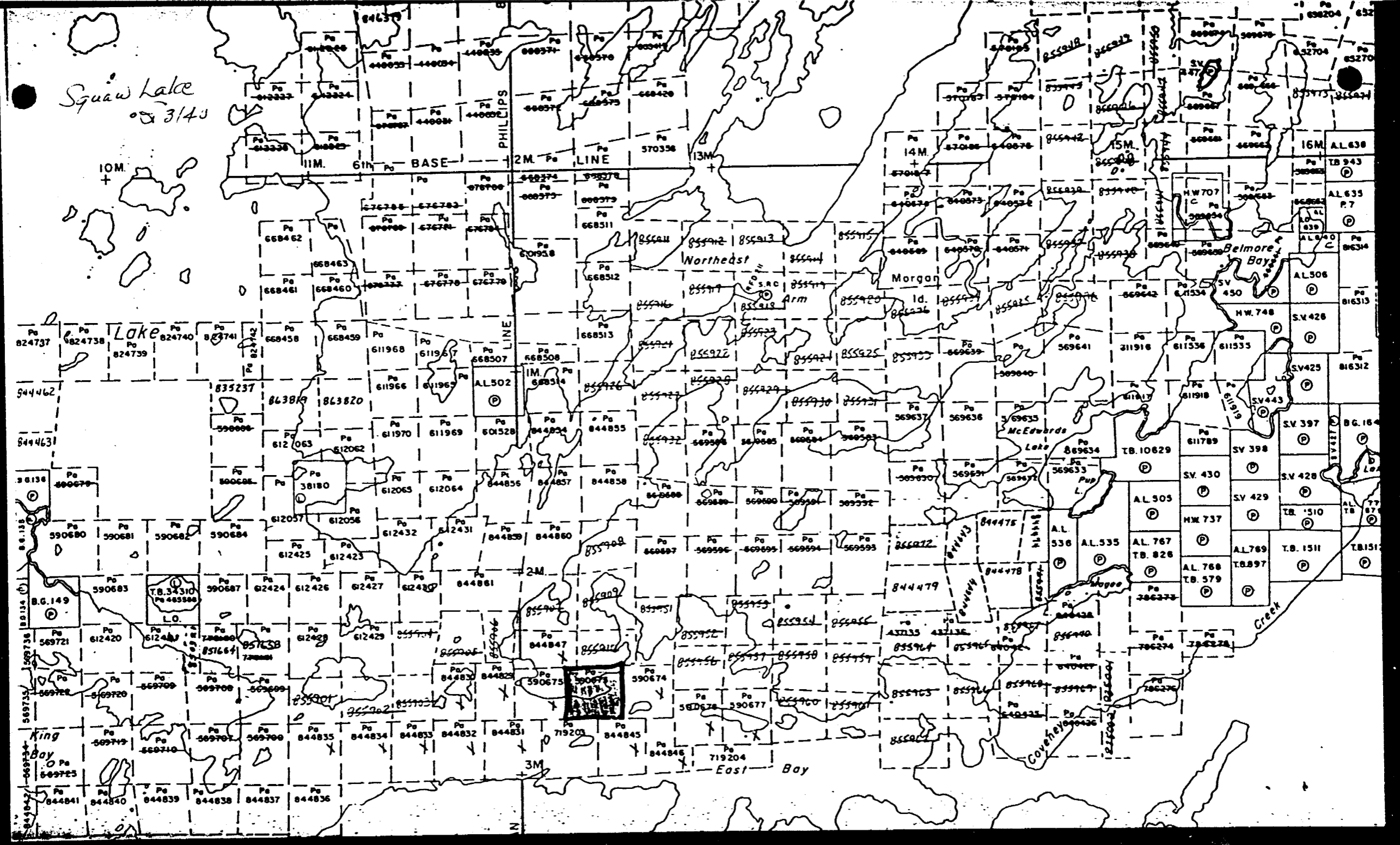
East Bay

SCALE:

0 1000 2000 4000 6000 8000
FEET



Squam Lake
3140



Lake

King Bay

East Bay

Creek

544462
8444631

38138
590680
590681
590682
590684

590683
590687
590688
590689
590690
590691
590692
590693
590694
590695
590696
590697
590698
590699
590700

590701
590702
590703
590704
590705
590706
590707
590708
590709
590710

590711
590712
590713
590714
590715
590716
590717
590718
590719
590720

590721
590722
590723

835237
863819
863820

612063
612062
612057
612058
612059
612060
612061
612064
612065
612066

612067
612068
612069
612070
612071
612072
612073
612074
612075
612076

612077
612078
612079
612080
612081
612082
612083
612084
612085
612086

612087
612088
612089
612090
612091
612092
612093
612094
612095
612096

612097
612098
612099
612100
612101
612102
612103
612104
612105
612106

612107
612108
612109
612110
612111
612112
612113
612114
612115
612116

612117
612118
612119
612120
612121
612122
612123
612124
612125
612126

612127
612128
612129
612130
612131
612132
612133
612134
612135
612136

611968
611969
611970
611971
611972
611973
611974
611975
611976
611977

611978
611979
611980
611981
611982
611983
611984
611985
611986
611987

611988
611989
611990
611991
611992
611993
611994
611995
611996
611997

611998
611999
612000
612001
612002
612003
612004
612005
612006
612007

612008
612009
612010
612011
612012
612013
612014
612015
612016
612017

612018
612019
612020
612021
612022
612023
612024
612025
612026
612027

612028
612029
612030
612031
612032
612033
612034
612035
612036
612037

612038
612039
612040
612041
612042
612043
612044
612045
612046
612047

612048
612049
612050
612051
612052
612053
612054
612055
612056
612057

668513
668514
668515
668516
668517
668518
668519
668520
668521
668522

668523
668524
668525
668526
668527
668528
668529
668530
668531
668532

668533
668534
668535
668536
668537
668538
668539
668540
668541
668542

668543
668544
668545
668546
668547
668548
668549
668550
668551
668552

668553
668554
668555
668556
668557
668558
668559
668560
668561
668562

668563
668564
668565
668566
668567
668568
668569
668570
668571
668572

668573
668574
668575
668576
668577
668578
668579
668580
668581
668582

668583
668584
668585
668586
668587
668588
668589
668590
668591
668592

668593
668594
668595
668596
668597
668598
668599
668600
668601
668602

369637
369638
369639
369640
369641
369642
369643
369644
369645
369646

369647
369648
369649
369650
369651
369652
369653
369654
369655
369656

369657
369658
369659
369660
369661
369662
369663
369664
369665
369666

369667
369668
369669
369670
369671
369672
369673
369674
369675
369676

369677
369678
369679
369680
369681
369682
369683
369684
369685
369686

369687
369688
369689
369690
369691
369692
369693
369694
369695
369696

369697
369698
369699
369700
369701
369702
369703
369704
369705
369706

369707
369708
369709
369710
369711
369712
369713
369714
369715
369716

369717
369718
369719
369720
369721
369722
369723
369724
369725
369726

611918
611919
611920
611921
611922
611923
611924
611925
611926
611927

611928
611929
611930
611931
611932
611933
611934
611935
611936
611937

611938
611939
611940
611941
611942
611943
611944
611945
611946
611947

611948
611949
611950
611951
611952
611953
611954
611955
611956
611957

611958
611959
611960
611961
611962
611963
611964
611965
611966
611967

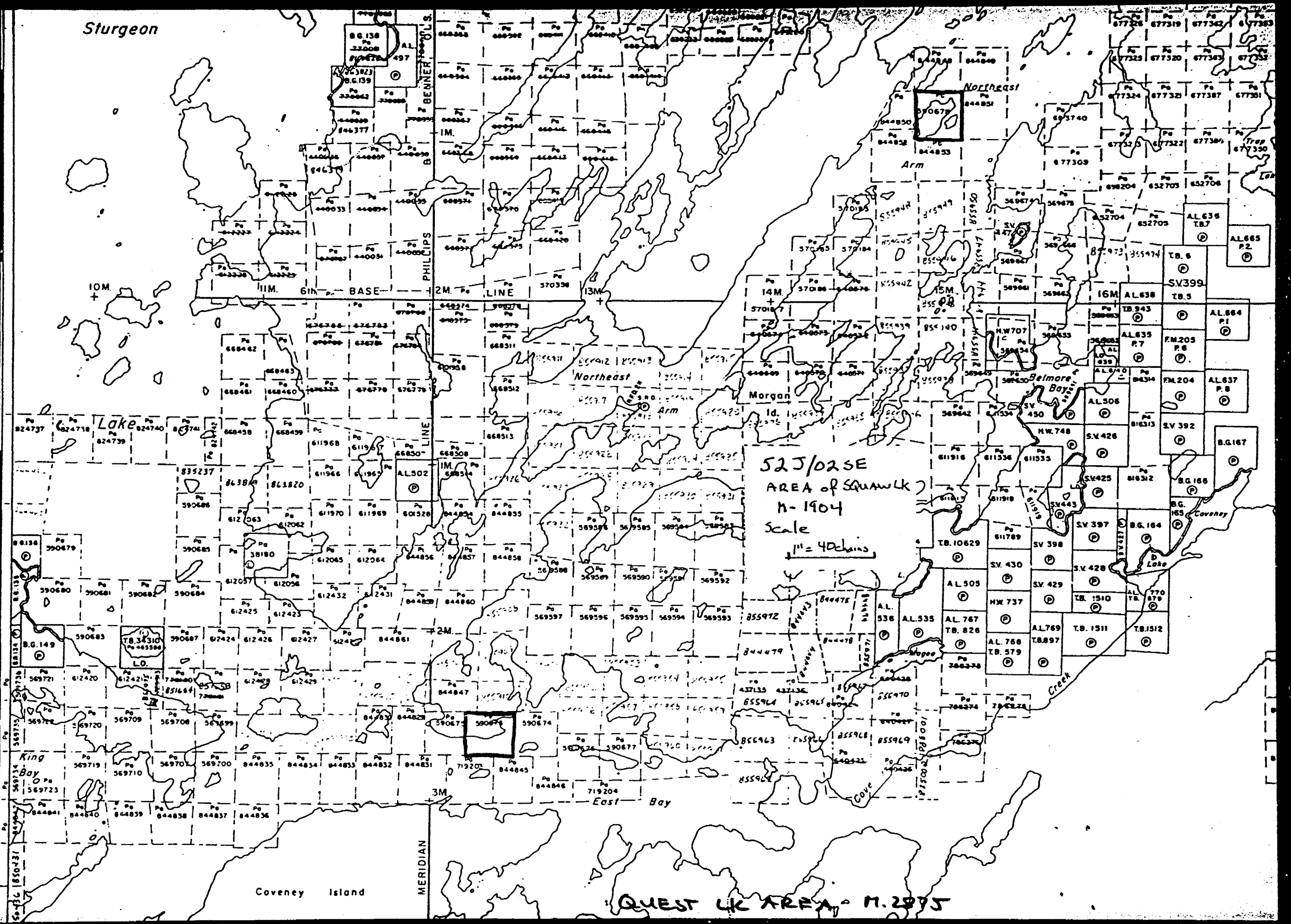
611968
611969
611970
611971
611972
611973
611974
611975
611976
611977

611978
611979
611980
611981
611982
611983
611984
611985
611986
611987

611988
611989
611990
611991
611992
611993
611994
611995
611996
611997

611998
611999
612000
612001
612002
612003
612004
612005
612006
612007

Fourbay Lake Area - G-2543



Sturgeon

10M.

Lake

King Bay

Coveney Island

MERIDIAN

QUEST LK AREA - n. 2095

525/02 SE
 AREA of SQUAWLK
 n-1904
 Scale
 1" = 40 chains

Northeast

Arm

Northeast

Morgan

Belmore

Coveney

Creek

East Bay

Cove

PHILIPPS

PHILIPPS

PHILIPPS

PHILIPPS

PHILIPPS

PHILIPPS

Map containing numerous parcel identifiers and ownership codes including: Pa, AL, SV, TB, FM, B.G., IM, BASE, LINE, 13M, 14M, 15M, 16M, 17M, 18M, 19M, 20M, 21M, 22M, 23M, 24M, 25M, 26M, 27M, 28M, 29M, 30M, 31M, 32M, 33M, 34M, 35M, 36M, 37M, 38M, 39M, 40M, 41M, 42M, 43M, 44M, 45M, 46M, 47M, 48M, 49M, 50M, 51M, 52M, 53M, 54M, 55M, 56M, 57M, 58M, 59M, 60M, 61M, 62M, 63M, 64M, 65M, 66M, 67M, 68M, 69M, 70M, 71M, 72M, 73M, 74M, 75M, 76M, 77M, 78M, 79M, 80M, 81M, 82M, 83M, 84M, 85M, 86M, 87M, 88M, 89M, 90M, 91M, 92M, 93M, 94M, 95M, 96M, 97M, 98M, 99M, 100M.



Ontario Assess. Lib. Squaw Lake G3140 Mining Act

Name and Address of Recorded Holder: **MISTANGO CONSOLIDATED RESOURCES LTD.**
 137 HURON HTS. DR. NEWMARKET, ONT. L3Y-4Z6
 Prospector's Licence No. **7-1551**

Summary of Work Performance and Distribution of Credits

Total Work Days Cr. claimed 500'	Mining Claim			Mining Claim			Mining Claim		
	Prefix	Number	Work Days Cr.	Prefix	Number	Work Days Cr.	Prefix	Number	Work Days Cr.
for Performance of the following work. (Check one only) <input type="checkbox"/> Manual Work <input type="checkbox"/> Shaft Sinking Drifting or other Lateral Work. <input type="checkbox"/> Compressed Air, other Power driven or mechanical equip. <input type="checkbox"/> Power Stripping <input checked="" type="checkbox"/> Diamond or other Core drilling <input type="checkbox"/> Land Survey	Pa	590673	60	Pa	844832	20			
		590674	60		844833	20			
		590675	60		844834	20			
		590676	60		844835	20			
		590677	60		844845	20			
		844829	20		844846	20			
		844830	20		844847	20			
	844831	20							

All the work was performed on Mining Claim(s): **Pa. 590673**

Required Information eg: type of equipment, Names, Addresses, etc. (See Table Below)

MORISSETTE DIAMOND DRILLING Co LTD, NAILEYBURY, ONT.
DRILLING MAY-JUNE 1986, BQ CORE, TOTAL = 500'.

DRILL HOLE	CLAIM	1986 DATES	DEPTH
M-86-4	Pa 590673	MAY 25 - MAY 26	203'
M-86-5	590673	MAY 26 - MAY 28	297'

PATRICIA MINING DIV.
RECEIVED
 1st Rec'd
 AUG 12 1986
 A.M. June 26/86 P.M.
 7|8|9|10|11|12|1|2|3|4|5|6

*Recorded
 Paris/Race*

MINING RESEARCH DIVISION
 AUG 18 1986
 RECEIVED

AMENDED Aug 4, 1986 Pa. 590673

Date of Report: **JUNE 23, 1986**
 Recorded Holder or Agent (Signature): *[Signature]*

Certification Verifying Report of Work

I hereby certify that I have a personal and intimate knowledge of the facts set forth in the Report of Work annexed hereto, having performed the work or witnessed same during and/or after its completion and the annexed report is true.

Name and Postal Address of Person Certifying:
CHESTER J. KURYLIW MSc. PEng, 46 INWALL DR.

Date Certified: **JUNE 23, 1986**
 Certified by (Signature): *[Signature]*

Table of Information/Attachments Required by the Mining Recorder

Type of Work	Specific information per type	Other Information (Common to 2 or more types)	Attachments
Manual Work	Nil	Names and addresses of men who performed manual work / operated equipment, together with dates and hours of employment.	Work Sketch: these are required to show the location and extent of work in relation to the nearest claim post.
Shaft Sinking, Drifting or other Lateral Work			
Compressed air, other power driven or mechanical equip.	Type of equipment	Names and addresses of owner or operator together with dates when drilling/stripping done.	Work Sketch (as above) in duplicate
Power Stripping	Type of equipment and amount expended. Note: Proof of actual cost must be submitted within 30 days of recording.		
Diamond or other core drilling	Signed core log showing: footage, diameter of core, number and angles of holes.	Nil	Nil
Land Survey	Name and address of Ontario land surveyor.		

MISTANGO CONS RES. DIAMOND DRILLING.
STURGEON LAKE, DIST. OF PATRICIA, ONT.
MAY-JUNE, 1986.

DRILL HOLE NO.	Pa. CLAIM NO	COORDINATES		DIP		BEARING	DEPTH FEET.
		LAT.	DEP.	DEPTH	DIP		
M-86 1 MAY 16 - MAY 20	590680	0+20' N	111+20' W	@ COLLAR @ 300'	-40° -40°	DUE SOUTH	350'.0
M-86 2 MAY 20 - MAY 23	590680	2+80' N	111+00' W	@ COLLAR @ 290'	-40° -38½°	DUE NORTH	297'.0
M-86 3 MAY 23 - MAY 24	590681	1+40' S	92+00' W	@ COLLAR @ 290'.0	-40° -36°	DUE SOUTH	347'.0
M-86 4 MAY 25 MAY 26	590673	2+00' N	17+50' E	@ COLLAR @ 200'	-70° -68°	DUE NORTH	203'.0
M-86 5 MAY 26 - MAY 28	590673	2+00' N	17+53' E	@ COLLAR @ 200'	-50° -46°	DUE EAST	297'.0
M-86 6 JUNE 12 - JUNE 15	590678	500' S of #61 POST. 400' W "	400' W of No. 1. POST	@ COLLAR @ 200' @ 500'	-50° -44° -36°	S-45°-E	516'.0
M-86 7 JUNE 16 - JUNE 19	612421	24+50' S	86+00' W	@ COLLAR @ 300' @ 490'	-45° -44° -42°	DUE NORTH.	497'.0
M-86 8 JUNE 20 - JUNE 23	590687	17+00' S	66+00' W	@ COLLAR @ 250 @ 486'.0	-45° -45° -45½°	DUE NORTH	486'.0

PATRICIA MINING DIV.
RECEIVED
 JUN 26 1986
 A.M. _____ P.M. _____
 7 8 9 10 11 12 1 2 3 4 5 6

FOOTAGE TOTAL 2993.0



Ministry of Natural Resources

Report of Work

#86-126

Instructions - Supply required data on a separate form for each type of work to be recorded (see table below). - For Geo-technical work use form no. 1362 "Report of Work (Geological, Geophysical, Geochemical and Expenditures)".

Ontario

Assess. Lib.

The Mining Act

Name and Postal Address of Recorded Holder MISTANEO CONSOLIDATED RESOURCES LTD. 137 HURON HTS DRIVE, NEWMARKET, ONT. L3Y 4Z6	Prospector's Licence No. 7-1551
--	---

Summary of Work Performance and Distribution of Credits

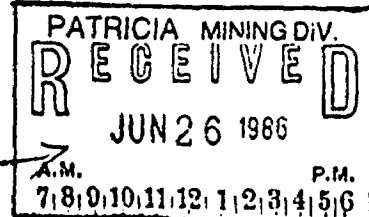
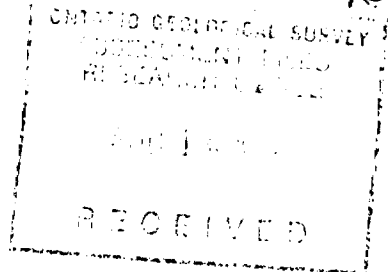
Total Work Days Cr. claimed 516!	Mining Claim			Mining Claim			Mining Claim		
	Prefix	Number	Work Days Cr.	Prefix	Number	Work Days Cr.	Prefix	Number	Work Days Cr.
for Performance of the following work. (Check one only) <input type="checkbox"/> Manual Work <input type="checkbox"/> Shaft Sinking Drifting or other Lateral Work. <input type="checkbox"/> Compressed Air, other Power driven or mechanical equip. <input type="checkbox"/> Power Stripping <input checked="" type="checkbox"/> Diamond or other Core drilling <input type="checkbox"/> Land Survey	Pa	590678	516 740						
		844848	60						
		844849	60						
		844850	60						
		844851	60						
		844852	76						
	844853	60							

All the work was performed on Mining Claim(s): **Pa 590678** **Squaw Lake G 3140**

Required information eg: type of equipment, Names, Addresses, etc. (See Table Below)

ON Pa. 590678 DRILL HOLE M-86-6. BA CORE TO DEPTH OF 516'0 MORISSETTE DIAMOND DRILLING CO. LTD. HAILEYBURY, ONT. DRILLED, JUNE 12 - JUNE 15, 1986.

Recorded



Pa. 590673

Date of Report JUNE 23 1986	Recorded By (Signature) <i>[Signature]</i>
---------------------------------------	---

Certification Verifying Report of Work

I hereby certify that I have a personal and intimate knowledge of the facts set forth in the Report of Work annexed hereto, having performed the work or witnessed same during and/or after its completion and the annexed report is true.

Name and Postal Address of Person Certifying
CHESTER J. KURYLIW MSc. P.ENG., 46 INCALL DR., DRYDEN, ONT. P8N 3B7

Date Certified JUNE 23 1986	Certified by (Signature) <i>[Signature]</i>
---------------------------------------	--

Table of Information/Attachments Required by the Mining Recorder

Type of Work	Specific information per type	Other information (Common to 2 or more types)	Attachments
Manual Work	Nil	Names and addresses of men who performed manual work / operated equipment, together with dates and hours of employment.	Work Sketch: these are required to show the location and extent of work in relation to the nearest claim post.
Shaft Sinking, Drifting or other Lateral Work			
Compressed air, other power driven or mechanical equip.	Type of equipment	Names and addresses of owner or operator together with dates when drilling/stripping done.	
Power Stripping	Type of equipment and amount expended. Note: Proof of actual cost must be submitted within 30 days of recording.		
Diamond or other core drilling	Signed core log showing; footage, diameter of core, number and angles of holes.	Nil	Work Sketch (as above) in duplicate
Land Survey	Name and address of Ontario land surveyor.		Nil

MISTANGO CONS RES DIAMOND DRILLING.

STURGEON LAKE, DIST. OF PATRICIA, ONT.

MAY-JUNE, 1986.

DRILL HOLE No.	Pa. CLAIM NO	COORDINATES		DIP		BEARING	DEPTH FEET.
		LAT.	DEP.	DEPTH	DIP		
M-86 1 MAY 16 - MAY 20	590680	0+20' N	111+20' W	@ COLLAR @ 300'	-40° -40°	DUE SOUTH	350.0
M-86 2 MAY 22 - MAY 23	590680	2+80' N	111+00' W	@ COLLAR @ 290'	-40° -38 1/2°	DUE NORTH	297.0
M-86 3 MAY 23 - MAY 24	590681	1+40' S	92+00' W	@ COLLAR @ 290.0	-40° -36°	DUE SOUTH	347.0
M-86 4 MAY 25 MAY 26	590673	2+00' N	17+50' E	@ COLLAR @ 200'	-70° -68°	DUE NORTH	203.0
M-86 5 MAY 26 - MAY 28	590673	2+00' N	17+53' E	@ COLLAR @ 200'	-50° -46°	DUE EAST	297.0
M-86 6 JUNE 12 - JUNE 15	590678	500' S of No 1 400' W " "	400' W of No 1, Past	@ COLLAR @ 200' @ 500'	-50° -44° -36°	S-45°-E	516.0
M-86 7 JUNE 16 - JUNE 19	612421	24+50' S	86+00' W	@ COLLAR @ 300' @ 490'	-45° -44° -42°	DUE NORTH.	497.0
M-86 8 JUNE 20 - JUNE 23	590687	17+00' S	66+00' W	@ COLLAR @ 250' @ 486.0	-45° -45° -45 1/2°	DUE NORTH.	486.0

FOOTAGE TOTAL 2993.0

PATRICIA MINING DIV.
RECEIVED
 JUN 26 1986
 A.M. PM
 7 8 9 10 11 12 1 2 3 4 5 6