

010

FALCONBRIDGE NICKEL MINES LTD.
SAMPLE RECORD

PROPERTY King Bay

ASSAYS

HOLE NO. KB-59 SHEET NO. 12

SAMPLE NO.	FROM	TO	LENGTH	g/t				ROCK TYPE & MINERALIZATION
				Au				
KB5701	15.60	16.60	1.00	<.01				Mafic flow; 8 rusty 2-5mm fractures with chlorite - ankerite - pyrite.
KB5702	16.60	17.60	1.00	<.01				Mafic flow: 2 chlorite-rusty fractures 5-10mm.
KB5703	17.60	18.60	1.00	<.01				Mafic flow, rusty fractures.
KB5704	18.60	19.60	1.00	<.01				Mafic flow, 2 x 5mm chloritic rusty ochre filled fractures.
KB5705	19.60	20.60	1.00	<.01				Mafic flow: 1cm chlorite-rusty ochre fracture.
KB5706	20.60	21.60	1.00	<.01				Mafic flow: 3mm rusty ochre fractures
KB5707	21.60	22.65	1.05	<.01				Mafic flow: 2cm grey QV, rusty chlorite fractures.
KB5708	22.65	23.65	1.00	<.01				Microdiorite 3 chlorite-calcite fractures.
KB5709	23.65	24.65	1.00	<.01				Microdiorite 3 chlorite-calcite fractures.
KB5710	24.65	26.0	1.35	<.01				Microdiorite 3 chlorite-calcite fractures.
KB5711	26.00	27.00	1.00	<.01				Microdiorite, 8 chloritic-carb-rusty fractures.
KB5712	27.00	28.00	1.00	<.01				Microdiorite 12 chloritic gouge rusty ochre fractures.
KB5713	28.00	28.90	0.90	<.01				Fault zone/sediment 15% chlorite-sericite fault gouge.
KB5714	28.90	29.90	1.00	<.01				Sediment 2 x 5mm ochrous fractures
KB5715	29.90	30.80	0.90	0.01				Sediment
KB5716	30.80	31.10	0.30	<.01				10cm semi-massive pyrite, 50% chert fragments.
KB5717	31.10	32.10	1.00	0.02				Sediment
KB5718	32.10	33.35	1.25	<.01				Sediment
KB5719	33.35	34.45	1.10	<.01				Alternating chert and sst, 2% disseminated py.
KB5720	34.45	35.45	1.00	<.01				Mafic flow, chilled margin
KB5721	44.30	45.55	1.25	<.01				Carbonatised mafic flow
KB5722	45.55	46.80	1.25	<.01				Carbonatised mafic flow, 10% calcite veins.
KB5723	46.80	48.00	1.20	<.01				Carbonatised mafic flow, 10% calcite veins.
KB5724	52.25	53.25	1.00	<.01				1cm, 2cm grey QV, 15% CA.
KB5725	54.40	55.40	1.00	<.01				Sheared mafic flow
KB5726	55.40	56.40	1.00	<.01				2cm grey q.v. 60° CA.
KB5727	56.40	57.40	1.00	<.01				Mafic flow
KB5728	57.40	58.40	1.00	<.01				Mafic tuff
KB5729	58.40	59.40	1.00	0.01				Mafic tuff
KB5730	59.40	60.40	1.00	<.01				Mafic tuff
KB5731	60.40	61.40	1.00	<.01				Mafic tuff: One 2x1cm rounded po clast, trace cpy.
KB5732	61.40	62.50	1.10	<.01				Pillowed mafic flow, 20% chert in-fillings.
KB5733	62.50	63.50	1.00	<.01				Pillowed mafic flow, 10% chert.
KB5734	63.50	64.50	1.00	<.01				Pillowed mafic flow.

FALCONBRIDGE NICKEL MINES LTD.

SAMPLE RECORD



PROPERTY King Bay

HOLE NO. KB-69

SHEET NO. 13

SAMPLE NO.	FROM	TO	LENGTH	g/t		ASSAYS	ROCK TYPE & MINERALIZATION
					Au		
KB5735	69.50	70.50	1.00	0.03			Chlorite-carb-epidote alternating.
KB5736	72.60	73.60	1.00	<.01			Carb. mafic flow, 10% calcite
KB5737	73.60	74.60	1.00	<.01			Carb. mafic flow, 5% grey q.v., 2% po, trace cpy.
KB5738	74.60	75.60	1.00	<.01			Carb. mafic flow, 3% qtz stringers, 2% po, trace cpy.
KB5739	75.60	76.60	1.00	0.01			Carb. mafic flow, 2% qtz. stringers.
KB5740	76.60	77.60	1.00	<.01			Carb. mafic flow.
KB5741	87.80	88.80	1.00	<.01			Carb. mafic flow.
KB5742	88.80	89.80	1.00	<.01			Carb. mafic flow.
KB5743	89.80	90.80	1.00	<.01			Carb. mafic flow, 1 x 2cm grey q.v. 30° CA.
KB5744	90.80	91.80	1.00	0.06			Carb. mafic flow, 2 x 0.5cm grey q.v.
KB5745	91.80	92.80	1.00	<.01			Carb. mafic flow
KB5746	92.80	93.80	1.00	0.01			Carb. mafic flow
KB5747	93.80	94.80	1.00	<.01			Carb. mafic flow
KB5748	94.80	95.80	1.00	0.03			Carb. mafic flow
KB5749	95.80	96.35	0.55	0.03			Carb. mafic flow
KB5750	96.35	96.85	0.50	<.01			Carb. mafic flow
KB5751	96.85	97.60	0.75	<.01			Blue grey QV. 5% po, 1% py, trace cpy
KB5752	97.60	98.40	0.80	0.10			Blue grey QV. 1% po, 1% py, trace cpy
KB5753	98.40	98.90	0.50	<.01			Carb. mafic flow.
KB5754	98.90	99.90	1.00	0.01			Carb. mafic flow, 20% calcite veins.
KB5755	99.90	100.90	1.00	0.01			Carb. mafic flow, 2% blue qtz., 15% calcite veins.
KB5756	100.90	102.00	1.10	0.02			Carb. mafic flow, 20% calcite veins, 3% blue qtz-chert.
KB5757	102.00	103.00	1.00	<.01			Carb. mafic flow.

The analysis was performed by Bondar-Clegg & Company Ltd. of Ottawa, Ontario using the fire assay-atomic absorption method.

KBBD
Jan 12 87

FALCONBRIDGE NICKEL MINES LTD.

SAMPLE RECORD



PROPERTY King Bay

GEOCHEM

HOLE No. KB-69

SHEET No. 16

SAMPLE NO.	FROM	TO	LENGTH	ppb				ROCK TYPE & MINERALIZATION
				Au				
GKB11501	13.20	15.60	3.40	3				Mafic flow
GKB11502	35.45	38.50	3.05	3				Mafic flow coarse
GKB11503	38.50	41.50	3.00	<2				Mafic flow massive
GKB11504	41.50	44.30	2.80	3				Mafic flow
GKB11505	48.00	50.00	2.00	2				Mafic flow mottled
GKB11506	50.00	52.25	2.25	<2				Mafic flow
GKB11507	53.25	54.40	1.15	3				Mafic flow mottled
GKB11508	64.50	67.00	2.50	<2				Pillow mafic flow
GKB11509	67.0	69.50	2.50	<2				Pillow mafic flow
GKB11510	70.50	72.60	2.10	4				Pillow mafic flow
GKB11511	77.60	80.00	2.40	2				Massive mafic flow
GKB11512	80.00	83.00	3.00	<2				Massive mafic flow
GKB11513	83.00	85.50	2.50	2				Massive mafic flow
GKB11514	85.50	87.85	2.35	2				Massive mafic flow
GKB11515	103.00	106.00	3.00	6				Pillowed mafic flow
GKB11516	106.00	109.00	3.00	3				Pillowed mafic flow
GKB11517	109.00	112.0	3.00	5				Pillowed mafic flow
GKB11518	112.00	115.0	3.00	2				Pillowed mafic flow
GKB11519	115.00	118.00	3.00	<2				Pillowed mafic flow
GKB11520	118.00	120.00	2.00	2				Pillowed mafic flow

The analysis was performed by X-Ray Assay Laboratories, Don Mills, Ontario using the FADCP method.

PBB
Jan 12 87

86-71



Pa 487673

Pa 437022

Pa 475232

KB-69

142m

CREEK

Pa 487674

Pa 475234

55m

Pa 475233

PN

FALCONBRIDGE LIMITED

KING BAY PROJECT
Drillhole Location Plan
DDH KB-69

SCALE 1:2500

DRAWN YCH

DATE MAY 5, 1986

DATA BY R33

FALCONBRIDGE NICKEL MINES LTD.

SAMPLE RECORD



King Bay

PROPERTY

Geochem Samples

HOLE No. KB-73

SHEET No. 14

SAMPLE NO.	FROM (metres)	TO	LENGTH	ppb				ROCK TYPE & MINERALIZATION
				Au				
GKB11587	11.60	14.88	3.28	2				Mafic Dyke
GKB11588	17.23	20.00	2.77	2				Trondhjemitic Feldspar Qtz Porphyry Pink
GKB11589	20.00	23.00	3.00	<1				Trondhjemitic Feldspar Qtz Porphyry Pink
GKB11590	23.00	25.26	2.26	6				Trondhjemitic Feldspar Qtz Porphyry Pink
GKB11591	26.25	29.00	2.75	<1				Trondhjemitic Feldspar Qtz Porphyry Pink
GKB11592	29.00	32.92	3.92	<1				Trondhjemitic Feldspar Qtz Porphyry Pink
GKB11593	33.65	37.52	3.87	37				Trondhjemitic Feldspar Qtz Porphyry Pink
GKB11594	41.30	44.00	2.70	<1				Trondhjemitic Feldspar Qtz Porphyry Pink
GKB11595	44.00	48.60	4.60	<1				Trondhjemitic Feldspar Qtz Porphyry Pink
GKB11596	49.23	51.65	2.32	<1				Trondhjemitic Feldspar Qtz Porphyry Pink
GKB11597	52.40	55.30	2.90	<1				Trondhjemitic Feldspar Qtz Porphyry Pink
GKB11598	56.00	59.00	3.00	3				Trondhjemitic Feldspar Qtz Porphyry Pink
GKB11599	59.00	62.76	3.76	2				Trondhjemitic Feldspar Qtz Porphyry Pink
GKB11600	65.36	68.22	2.86	5				Trondhjemitic Feldspar Qtz Porphyry Pink
GKB22001	72.09	74.00	1.91	6				Trondhjemitic Feldspar Qtz Porphyry Pink
GKB22002	74.00	77.00	3.00	<1				Trondhjemitic Feldspar Qtz Porphyry Pink
GKB22003	77.00	79.36	2.36	<1				Trondhjemitic Feldspar Qtz Porphyry Pink
GKB22004	80.24	83.00	2.75	<1				Trondhjemitic Feldspar Qtz Porphyry Pink
GKB22005	83.00	86.58	3.58	2				Trondhjemitic Feldspar Qtz Porphyry Pink
GKB22006	90.49	93.49	3.00	<1				Mafic Flow
GKB22007	93.49	96.58	3.09	3				Mafic Flow
GKB22008	102.40	105.23	2.83	<1				Mafic Flow
GKB22009	110.60	113.00	2.40	2				Mafic Flow
GKB22010	113.00	116.00	3.00	4				Mafic Flow
GKB22011	116.00	118.66	2.66	3				Mafic Flow
GKB22012	122.00	125.00	3.00	<1				Mafic Flow
GKB22013	125.00	128.00	3.00	<1				Mafic Flow, not incl. Mafic Dyke (127.03-127.89)
GKB22014	128.00	131.00	3.00	<1				Mafic Flow
GKB22015	131.00	134.00	3.00	1				Mafic Flow
GKB22016	134.00	137.32	3.32	<1				Mafic Flow
GKB22017	137.32	139.93	2.61	46				Pillowed Flows
GKB22018	152.00	155.00	3.00	11				Pillowed Flows
GKB22019	155.00	158.00	3.00	6				Pillowed Flows

FALCONBRIDGE NICKEL MINES LTD.

SAMPLE RECORD

PROPERTY King Bay

HOLE NO. KB-73

SHEET NO. 15

Geochem Samples

SAMPLE NO.	FROM (metres)	TO	LENGTH	ppb				ROCK TYPE & MINERALIZATION
				Au				
GKB22020	161.00	164.00	3.00	<1				Massive Flows
GKB22021	164.00	167.00	3.00	21				Massive Flows
GKB22022	167.00	170.00	3.00	2				Massive Flows
GKB22023	170.00	173.00	3.00	3				Massive Flows
GKB22024	173.74	176.00	2.26	110				Pillowed Flows
GKB22025	176.00	179.00	3.00	230				Pillowed Flows
GKB22026	179.00	182.00	3.00	7				Pillowed Flows
GKB22027	183.54	186.54	3.00	17				Pillowed Flows
GKB22028	188.69	191.00	2.31	3				Mafic Flows
GKB22029	191.00	194.00	3.00	3				Mafic Flows
GKB22030	194.00	197.00	3.00	55				Mafic Flows
GKB22031	197.00	200.00	3.00	2				Mafic Flows
GKB22032	200.00	203.00	3.00	3				Mafic Flows
GKB22033	203.00	207.21	4.21	43				Mafic Flows
GKB22034	209.90	212.90	3.00	12				Pillowed Flows
GKB22035	212.90	215.90	3.00	<1				Pillowed Flows
GKB22036	215.90	218.25	2.65	<1				Pillowed Flows
GKB22037	222.93	235.93	3.00	15				Pillowed Flows
GKB22038	235.93	228.93	3.00	16				Pillowed Flows
GKB22039	228.93	230.40	1.47	320				Pillowed Flows
GKB22040	235.60	237.70	2.10	6				Pillowed Flows
GKB22041	244.30	247.30	3.00	31				Pillowed Flows
GKB22042	247.30	250.30	3.00	2				Pillowed Flows
GKB22043	250.30	253.30	3.00	24				Pillowed Flows
GKB22044	253.30	256.30	3.00	2				Pillowed Flows
GKB22045	256.30	260.00	3.70	5				Pillowed Flows
GKB22046	260.00	262.20	2.20	22				Mafic Flows
GKB22047	263.00	266.00	3.00	<1				Mafic Flows
GKB22048	266.00	269.00	3.00	<1				Mafic Flows
GKB22049	269.00	272.00	3.00	<1				Mafic Flows
GKB22050	272.00	275.00	3.00	3				Mafic Flows
GKB22051	275.00	278.00	3.00	5				Mafic Flows
GKB22052	278.00	281.00	3.00	<1				Mafic Flows
GKB22053	281.00	283.25	2.25	<1				Mafic Flows
GKB22054	283.75	287.00	3.25	2				Mafic Flows
GKB22055	287.00	290.00	3.00	<1				Mafic Flows
GKB22056	290.00	293.00	3.00	<1				Mafic Flows
GKB22057	293.00	296.00	3.00	3				Mafic Flows
GKB22058	296.00	299.00	3.00	<1				Mafic Flows

The analysis was performed by X-Ray Assay Laboratories of Don Mills, Ontario using the FADCP method for Au ppb.

RBB
Jan 12 '87

FALCONBRIDGE NICKEL MINES LTD.

SAMPLE RECORD



PROPERTY King Bay

Assay Samples

HOLE NO. KB-73

SHEET NO. 16

SAMPLE NO.	FROM (metres)	TO	LENGTH	Au		ASSAYS				ROCK TYPE & MINERALIZATION
				g/t						
KB5853	16.10	17.23	1.13	0.05						Altered Feldspar Qtz Porphyry
KB5854	25.36	26.25	0.89	0.02						Altered Feldspar Qtz Porphyry
KB5855	32.92	33.65	0.73	0.03						Silicified Feldspar Qtz Porphyry 5% qtz-carbonate veins.
KB5856	40.50	41.30	0.80	0.02						Zone of hydrothermal metasomatism
KB5857	48.60	49.23	0.63	0.10						Silicified-sericitised zone, tr. py.
KB5858	51.65	52.40	0.75	0.02						Silicified-sericitised zone, tr. py.
KB5859	55.30	56.00	0.70	0.02						Silicified-sericitised zone, tr. py.
KB5860	64.55	65.36	0.81	0.13						Silicified-sericitised zone, tr. py.
KB5861	68.22	68.77	0.55	0.02						Silicified-sericitised zone, tr. py.
KB5862	70.03	71.03	1.00	0.03						Mafic dyke, 5% qtz veining, 2% py., tr. po.
KB5863	71.03	72.09	1.06	0.16						Mafic dyke, 5% qtz veining, 2% py., tr. po.
KB5864	79.36	80.24	0.98	0.05						Silicified-sericitised zone, tr. py.
KB5865	86.58	87.38	0.80	0.03						Silicified-sericitised zone, tr. py.
KB5866	87.75	88.60	0.95	0.03						Silicified-sericitised zone, tr. py.
KB5867	96.81	97.81	1.00	0.45						Calcite Breccia, 2-5% py.
KB5868	97.81	98.81	1.00	1.05						Calcite Breccia, 2-5% py.
KB5869	98.81	99.91	1.10	0.13						Calcite Breccia, 2-5% py., incl. 1cm qtz-carbonate vein
KB5870	99.91	100.91	1.00	0.23						Calcite Breccia, 2-5% py., incl. 2x1cm qtz. carbonate vein
KB5871	100.91	102.24	1.33	0.06						Calcite Breccia, 2-5% py., incl. 2cm qtz carbonate vein
KB5872	105.23	105.73	0.50	0.07						0.21m qtz-carbonate vein, tr. py., CA. = 15°
KB5873	107.71	108.54	0.83	0.05						Intense carbonate veining, 2-5% py.
KB5874	109.59	110.60	1.01	0.41						Intense carbonate veining, 5-10% py., 2-5% po.
KB5875	118.66	119.66	1.00	0.04						Intense carbonate veining, tr.-2% py.
KB5876	119.66	120.76	1.10	0.06						Intense carbonate veining, tr.-2% py.
KB5877	139.93	140.93	1.00	0.26						Calcite Breccia, 2-5% py., 2% po., 5-10% veining
KB5878	140.93	141.93	1.00	0.41						Calcite Breccia, 2% py., 2% po., 5% veining
KB5879	141.93	142.93	1.00	1.19						Calcite Breccia, 2% py., 2% po., 5% veining
KB5880	142.93	143.93	1.00	0.99						Calcite Breccia, 2-5% py., 3% po., 5% veining
KB5881	143.93	144.93	1.00	0.20						Calcite Breccia, tr. py., tr. po., 2-5% veining
KB5882	144.93	145.93	1.00	0.08						Calcite Breccia, 2% py., tr.-2% po., 5-10% veining
KB5883	145.93	146.93	1.00	0.04						Calcite Breccia, tr. py., tr. po. 5% veining
KB5884	146.93	147.63	0.70	0.24						Calcite Breccia, tr. py., 1-2% po., 5% veining, incl. 2cm veins
KB5885	147.63	148.39	0.76	0.03						Calcite Breccia, tr. py., 2% po., 1% cpy., 5% veining, incl. 3cm black qtz vein
KB5886	149.06	150.06	1.00	0.14						Mafic flows (pillowed), 3 small qtz carbonate veins

FALCONBRIDGE NICKEL MINES LTD.

SAMPLE RECORD



PROPERTY King Bay

HOLE NO. KB-73 SHEET NO. 17

Assay Samples

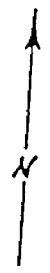
SAMPLE NO.	FROM (metres)	TO	LENGTH	Au				ROCK TYPE & MINERALIZATION
				ASSAYS	q/t			
KB5887	150.25	150.75	0.50	0.01				Mafic flows (pillowed), 1x3cm qtz carbonate veins
KB5888	158.00	158.90	0.90	0.01				Hyaloclastite zone, tr. py.
KB5889	159.50	160.30	0.80	0.01				Hyaloclastite zone, tr. py.
KB5890	182.38	183.54	1.16	<.01				Hyaloclastite zone, tr. py., 2x1cm qtz carbonate veins
KB5891	207.83	208.53	0.70	0.06				Qtz carbonate vein, tr. py., tr. po., (0.35m) CA. 15°
KB5892	209.52	210.09	0.57	2.09				Sulphide zone, 3-5% py.
KB5893	218.25	218.75	0.50	0.02				Pillowed flows, incl. 5cm blue qtz carbonate vein
KB5894	221.03	221.78	0.75	<.01				Hyaloclastite zone, tr. py., tr. po.
KB5895	221.78	222.93	1.15	0.02				Hyaloclastite zone, tr. pr., tr. po.
KB5896	230.40	231.40	1.00	0.36				Dacite lithic tuff, tr. py., tr. po., 2% qtz carbonate veining
KB5897	231.40	232.40	1.00	0.19				Dacite lithic tuff, 1-2% py., 1-2% po., 2% qtz carbonate veining
KB5898	232.40	233.40	1.00	0.18				Dacite lithic tuff, 1-2% py., 1-3% po., 2% qtz carbonate veining
KB5899	233.40	234.40	1.00	1.10				Dacite lithic tuff, 1-2% py., 2-5% po., 2% qtz carbonate veining
KB5900	234.40	235.60	1.20	0.03				Dacite lithic tuff, tr. py., 2% qtz carbonate veining
KB2301	237.71	238.61	0.90	<.01				Hyaloclastite zone, tr. py.
KB2302	238.97	239.97	1.00	<.01				Hyaloclastite zone, tr. py.
KB2303	239.97	241.13	1.16	<.01				Hyaloclastite zone, tr. py., 3-5% qtz carbonate veining
KB2304	241.65	242.65	1.00	0.97				Pillowed flows contains 2x2cm qtz carbonate veins
KB2305	243.25	244.25	1.00	0.02				Pillowed flows incl. 4x1cm qtz carbonate veins, tr. py.
KB2306	262.20	262.90	0.70	<0.01				Mafic flows, 2cm qtz-carbonate vein, tr. py., low CA.
KB2307	283.25	283.75	0.50	<0.01				Mafic flows, incl. 1x4cm qtz vein, tr. py.

Analysis was performed by Bondar-Clegg of Ottawa, Ontario using the fire assay-atomic absorption method.

R.D. Bul

Jan 12 '87

86-100



487673

Pa 437022

Pa 475232

PATRICIA MINGOY.
RECEIVED
 MAY 29 1953
 A.M. P.M.
 7 8 9 10 11 12 1 2 3 4 5 6

150m

50m

KB-73

Pa 487674

Pa 475234

Pa 475233

KING BAY

0 50 100m
 1:2500

KB-73

FALCONBRIDGE NICKEL MINES LTD.

SAMPLE RECORD

PROPERTY King Bay

HOLE NO. KB-74 SHEET No. 13

Geochem Samples

SAMPLE NO.	FROM (metres)	TO	LENGTH	ppb		ASSAYS	ROCK TYPE & MINERALIZATION
				Au			
GKB22059	8.00	11.00	3.00	<1			Porphyritic Mafic Flows
GKB22060	11.00	14.00	3.00	2			Porphyritic Mafic Flows
GKB22061	14.00	17.00	3.00	3			Porphyritic Mafic Flows
GKB22062	17.00	20.00	3.00	2			Porphyritic Mafic Flows
GKB22063	20.00	23.00	3.00	1			Porphyritic Mafic Flows
GKB22064	23.00	26.00	3.00	<1			Porphyritic Mafic Flows
GKB22065	26.00	29.00	3.00	2			Porphyritic Mafic Flows
GKB22066	29.00	32.00	3.00	<1			Porphyritic Mafic Flows
GKB22067	32.00	35.00	3.00	2			Porphyritic Mafic Flows
GKB22068	35.00	38.00	3.00	<1			Porphyritic Mafic Flows, not incl. Assayed section (36.9-37.4)
GKB22069	38.00	41.00	3.00	2			Porphyritic Mafic Flows
GKB22070	41.00	44.00	3.00	1			Porphyritic Mafic Flows
GKB22071	44.00	47.00	3.00	<1			Porphyritic Mafic Flows, not incl. Assayed section (45.4-46.4)
GKB22072	47.00	48.88	1.88	4			Porphyritic Mafic Flows
GKB22073	48.88	53.00	4.22	1			Mafic Intrusive (massive mafic flow)
GKB22074	53.00	56.00	3.00	1			Mafic Intrusive (massive mafic flow)
GKB22075	56.00	59.00	3.00	1			Mafic Intrusive (massive mafic flow)
GKB22076	59.00	62.00	3.00	<1			Mafic Intrusive (massive mafic flow)
GKB22077	62.00	65.00	3.00	2			Mafic Intrusive (massive mafic flow)
GKB22078	65.00	68.00	3.00	9			Mafic Intrusive (massive mafic flow)
GKB22079	68.00	71.00	3.00	5			Mafic Intrusive (massive mafic flow)
GKB22080	71.00	74.00	3.00	1			Mafic Intrusive (massive mafic flow)
GKB22081	74.00	77.00	3.00	2			Mafic Intrusive (massive mafic flow)
GKB22082	89.00	92.50	3.50	1			Massive Mafic Flow
GKB22083	92.50	95.50	3.00	3			Mafic Intrusion
GKB22084	95.50	98.50	3.00	7			Mafic Intrusion
GKB22085	99.50	103.90	4.40	2			Massive Mafic Flow, excludes 1m assay sample
GKB22086	133.40	134.90	1.5	<1			Massive Mafic Flow
GKB22087	145.00	148.20	3.2	4			Pillowed Mafic Flow

The analysis was performed by X-Ray Assay Laboratories Limited, Don Mills, Ontario using the FADCP method.

R.B. Paul
Jan 12 87

FALCONBRIDGE NICKEL MINES LTD.

SAMPLE RECORD

PROPERTY King Bay

HOLE NO. KB-74

SHEET No. 14

Assay Sample

SAMPLE NO.	FROM (metres)	TO	LENGTH	ASSAYS				ROCK TYPE & MINERALIZATION
				g/t Au				
KB2308	36.90	37.40	0.50	<.01				Porphyritic Mafic Flows, incl. 7cm qtz-carb. vein
KB2309	45.40	46.40	1.00	<.01				Porphyritic Mafic Flows, incl. 2cm white qtz vein, tr. py.
KB2310	76.95	78.05	1.10	<.01				Medium grey chert
KB2311	78.05	78.65	0.60	<.01				Feldspathic sandstone
KB2312	78.65	79.20	0.55	<.01				Silty mudstone
KB2313	79.20	80.25	1.05	<.01				Lithic sandstone?
KB2314	80.25	80.75	0.50	0.05				Cherty mudstone, calcite cracks, 1% po., tr. cpy.
KB2315	80.75	81.35	0.60	0.03				Cherty mudstone, 2% calcite-qtz veinlets, 1% po., tr. cpy.
KB2316	84.30	85.30	1.00	0.02				Massive Flow, 2x5cm silicified zone, with 3% diss. po.
KB2317	85.30	86.30	1.00	<.01				Massive Flow, 5cm mylonite zone, with 2% qtz, tr. po.
KB2318	88.00	89.00	1.00	0.01				20cm silicified zone
KB2319	98.50	99.50	1.00	0.09				Silicified zone, tr. cpy.
KB2336	100.40	101.40	1.00	0.03				Massive Flow, 1cm blue qtz vein, 1% po., 0.5% cpy. at 35° CA
KB2320	103.90	104.90	1.00					Mafic Tuff
KB2321	104.90	105.90	1.00	<.01				Mafic Tuff
KB2322	105.90	107.00	1.10	<.01				Mafic Tuff
KB2323	107.00	108.10	1.10	<.01				Mafic Tuff
KB2324	108.10	109.30	1.20	<.01				Mafic Tuff
KB2325	109.30	110.30	1.00	<.01				Mafic Tuff
KB2326	110.30	111.30	1.00	<.01				Mafic Tuff
KB2327	111.30	112.30	1.00	<.01				Mafic Tuff
KB2328	112.30	113.30	1.00	0.10				Chert, 2% po., tr. cpy., diss. and remobilized into cracks
KB2329	113.30	114.30	1.00	0.50				Chert
KB2330	114.30	115.30	1.00	0.04				Chert
KB2331	115.30	116.30	1.00	0.04				Chert
KB2332	116.30	117.30	1.00	<.01				Chert
KB2333	117.30	118.30	1.00	<.01				Chert
KB2334	118.30	119.30	1.00	<.01				Chert, dark grey
KB2335	119.30	120.10	0.80	<.01				Chert/mafic flow contact
KB2337	122.00	123.00	1.00	<.01				Mafic Flow/ chert sediment
KB2338	123.00	124.00	1.00	<.01				Chert Sediment
KB2339	124.00	125.00	1.00	<.01				Chert Sediment
KB2340	125.00	126.00	1.00	0.01				Chert Sediment
KB2341	126.00	127.00	1.00	<.01				Minor fault, chert/feldspathic sand- stone
KB2342	127.00	128.00	1.00	<.01				Chert sediment
KB2343	128.00	129.00	1.00	<.01				Chert sediment
KB2344	129.00	130.00	1.00	<.01				Chert sediment
KB2345	130.00	131.00	1.00	<.01				Minor fault, marginal volcanics, 2% po., 1% cpy.
KB2346	131.65	132.40	0.75	<.01				Mafic Flow/Chert contact
KB2347	132.40	133.40	1.00	0.02				Chert Sediment
KB2348	134.90	136.15	1.20	0.07				Chert Sediment
KB2349	136.15	137.00	0.85	0.10				Feldspar Qtz Porphyry, 1% diss. po.

FALCONBRIDGE NICKEL MINES LTD.

SAMPLE RECORD

PROPERTY King Bay

HOLE No. KB-74

SHEET No. 15

Assay Samples

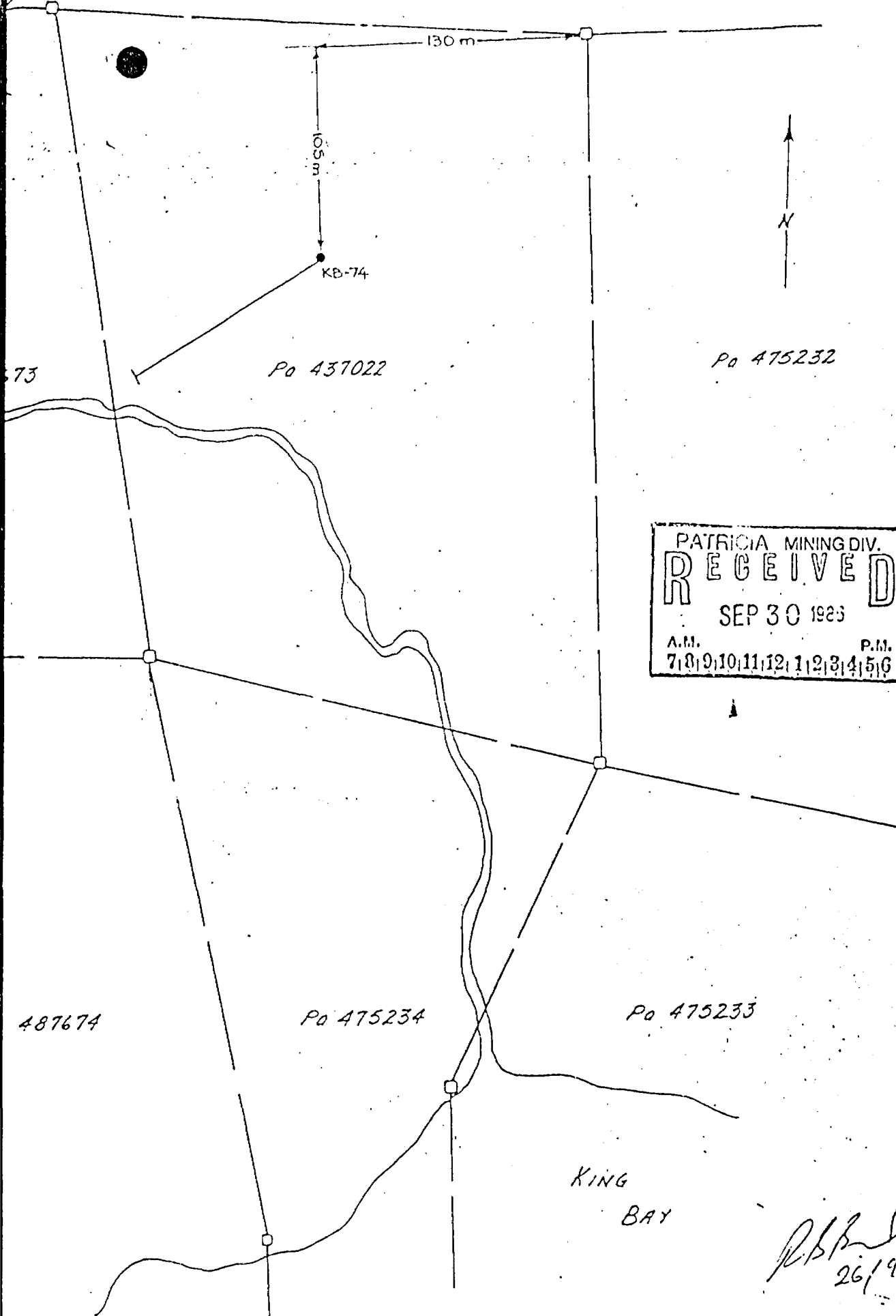
SAMPLE NO.	FROM (metres)	TO	LENGTH	g/t		ASSAYS				ROCK TYPE & MINERALIZATION	
				Au							
KB2350	137.00	138.00	1.00								Feldspar Qtz Porphyry, 1% diss. po.
KB2351	138.00	139.00	1.00	0.30							Feldspar Qtz Porphyry, tr. po.
KB2352	139.00	140.00	1.00	0.10							Feldspar Qtz Porphyry, 1% po., tr. cpy.
KB2353	140.00	141.00	1.00	0.09							Feldspar Qtz Porphyry
KB2354	141.00	142.00	1.00	0.03							Feldspar Qtz Porphyry
KB2355	142.00	143.00	1.00	0.12							Feldspar Qtz Porphyry
KB2356	143.00	144.00	1.00	0.02							Feldspar Qtz Porphyry
KB2357	144.00	145.00	1.00	0.02							Contact Zone Feldspar Qtz Porphyry

The analysis was performed by Bondar-Clegg & Company Ltd., Ottawa, Ontario using the fire assay - atomic absorption method.

R. B. Bond

Jan 12 87

86-146



PATRICIA MINING DIV.
RECEIVED
 SEP 30 1986
 A.M. P.M.
 7|8|9|10|11|12|1|2|3|4|5|6

R.B.P.
 26/9/86

KB-74



SAMPLE	AU PPG
GKB-22018	11
GKB-22019	6
GKB-22020	<1
GKB-22021	21
GKB-22022	2
GKB-22023	3
GKB-22024	110
GKB-22025	230
GKB-22026	7
GKB-22027	17
GKB-22028	3
GKB-22029	3
GKB-22030	55
GKB-22031	2
GKB-22032	3
GKB-22033	43
GKB-22034	12
GKB-22035	<1
GKB-22036	<1
GKB-22037	15
GKB-22038	16
GKB-22039	320
GKB-22040	6
GKB-22041	31
GKB-22042	2
GKB-22043	24
GKB-22044	2
GKB-22045	5
GKB-22046	22
GKB-22047	<1
GKB-22048	<1
GKB-22049	<1
GKB-22050	3
GKB-22051	5
GKB-22052	<1
GKB-22053	<1
GKB-22054	2
GKB-22055	<1
GKB-22056	<1
GKB-22057	3
GKB-22058	<1
GKB-22059	<1
GKB-22060	2
GKB-22061	3
GKB-22062	2
GKB-22063	1
GKB-22064	<1
GKB-22065	2
GKB-22066	<1
GKB-22067	1

KB-73 Entered

RECEIVED

FEB 9 1987

MINING LANDS SECTION

PATRICIA MINGOS
RECEIVED
 JAN 14 1987
 A.M.
 101910/11/12/13/14/15

3

KB-74

RBB
Jan 12 '87



SAMPLE	AU PPB
GKB-22068	<1
GKB-22069	2
GKB-22070	1
GKB-22071	<1
GKB-22072	4
GKB-22073	1
GKB-22074	1
GKB-22075	1
GKB-22076	<1
GKB-22077	2
GKB-22078	9
GKB-22079	5
GKB-22080	1
GKB-22081	2
GKB-22082	1
GKB-22083	3
GKB-22084	7
GKB-22085	2
GKB-22086	<1
GKB-22087	4

KB-74
83

SAMPLE AU PPB

GKB11587	2
GKB11588	2
GKB11589	<1
GKB11590	5
GKB11591	<1
GKB11592	<1
GKB11593	37
GKB11594	<1
GKB11595	<1
GKB11596	<1
GKB11597	<1
GKB11598	3
GKB11599	2
GKB11600	5
GKB22C01	6
GKB22C02	<1



*KB. 73.
Entered
4/3*

*LB Bond
Jan 12 '87*

SMP.MISS. - SAMPLE WAS NOT RECEIVED AT XRAL

SAMPLE	AU PPB
--------	--------

GKB22003	<1
GKB22004	<1
GKB22005	2
GKB22006	<1
GKB22007	3
GKB22008	<1
GKB22009	2
GKB22010	4
GKB22011	3
GKB22012	<1
GKB22013	<1
GKB22014	<1
GKB22015	1
GKB22016	<1
GKB22017	46

RB-13
RB

GKB22018 SMP MISS ?
 ↳ On Next Report.

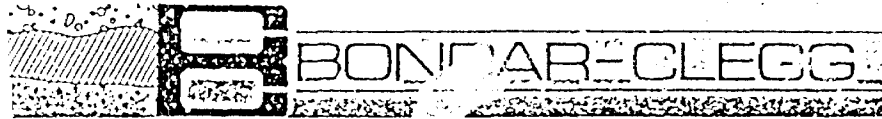
SMP.MISS. - SAMPLE WAS NOT RECEIVED AT XRAL



SAMPLE	AU PPB
GKB-11501	3
GKB-11502	3
GKB-11503	<2
GKB-11504	3
GKB-11505	2
GKB-11506	<2
GKB-11507	3
GKB-11508	<2
GKB-11509	<2
GKB-11510	4
GKB-11511	2
GKB-11512	<2
GKB-11513	2
GKB-11514	2
GKB-11515	6
GKB-11516	3
GKB-11517	5
GKB-11518	2
GKB-11519	<2
GKB-11520	2

*K.B. - 69
 Daniel
 H. B.*

*RBB
 Jan 12 87*



181

REPORT: 416-1352 (COMPLETE)

REFERENCE INFO: PN 520

CLIENT: FALCONBRIDGE LTD.
PROJECT: NONE

SUBMITTED BY: R. RAND
DATE PRINTED: 22-APR-86

ORDER	ELEMENT	NUMBER OF ANALYSES	LOWER DETECTION LIMIT	EXTRACTION	METHOD
1	Au-150 Gold -150 Fraction	12	0.01 PPM	AQUA REGIA	Fire Assay AA
2	Au+150 Gold +150 Fraction	12	0.01 PPM	AQUA REGIA	Fire Assay AA
3	Au AV Gold Weight Average	12	0.01 PPM		
4	TestWt Au Test Weight -150	12	0.01 gms		
5	-150wt Weight -1 + Obtained	12	0.01 gms		
6	+150wt Weight +1 + Obtained	12	0.01 gms		

SAMPLE TYPES	NUMBER	SIZE FRACTIONS	NUMBER	SAMPLE PREPARATIONS	NUMBER
OTHER	12	+150/-150	12	Sample Preparation	12

REMARKS: MEANS LESS THAN

REPORT COPIES TO: MR. RAY RAND

INVOICE TO: MR. RAY RAND

R. B. B.

Jan 12 '87

I. Kaulson

Ingersoll & Company Ltd.
 Toronto, Ontario
 Canada K1J 8X3
 Phone 749 2220
 Telex 3333



Certificate of Analysis

REPORT: 416-1352

PROJECT: NONE PAGE 1

SAMPLE NUMBER	ELEMENT UNITS	Au-150 PPM	Au+150 PPM	Au AV PPM	TestWt gms	-150Wt gms	+150Wt gms
KB 2328		0.16	0.06	0.15	20.00	196.80	16.55
KB 2329		0.56	0.12	0.54	20.00	219.50	11.76
KB 5716		0.03	0.04	0.03	20.00	247.70	14.93
KB 5751		<0.01	<0.01	<0.01	20.00	249.80	16.63
KB 5752		<0.01	<0.01	<0.01	20.00	235.90	13.00

~~KB 5892~~
~~KB 5893~~
~~KB 5894~~
~~KB 5895~~
~~KB 5896~~

KB 5892 1.85 10.74 1.96 20.00 262.60 3.37

KB 73

I. Rowland

REPORT: 416-0787 (COMPLETE)

REFERENCE INFO: REF: PH 520

CLIENT: FALCONBRIDGE LTD.
PROJECT: NONE

SUBMITTED BY: G. DA COSTA
DATE PRINTED: 7-APR-86

ORDER	ELEMENT	NUMBER OF ANALYSES	LOWER DETECTION LIMIT	EXTRACTION	METHOD
1	Au Gold - Assay	13	0.01 PPA		

SAMPLE TYPES	NUMBER	SIZE FRACTIONS	NUMBER	SAMPLE PREPARATIONS	NUMBER
DRILL CORE	13	-200	13	Sample Preparation	13

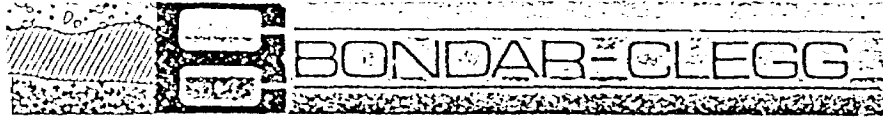
REMARKS: < MEANS LESS THAN.

REPORT COPIES TO: MR. RAY BAND

INVOICE TO: MR. RAY BAND

R. Band
 Jan 2 87

P. Manton



4

REPORT: 416-0787

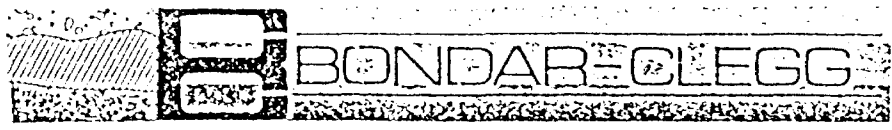
PROJECT: NONE PAGE 1

SAMPLE NUMBER	ELEMENT UNITS	AU PPM
KB-5745		<0.01
KB-5746		0.01
KB-5747		<0.01
KB-5748		0.03
KB-5749		0.03
KB-5750		<0.01
KB-5751		<0.01
KB-5752		0.10
KB-5753		<0.01
KB-5754		0.01
KB-5755		0.01
KB-5756		0.02
KB-5757		<0.01

*KB-69
Checked
LB*

I. Paulsen
Chief Analyst

Bondar-Clegg & Company Ltd
3120 Carleton Rd.
Ottawa, Ontario
Canada K1J 8Y2
Phone (613) 745-2220
Telex 02



Certificate
of Analysis

5

REPORT: 415-0808 (COMPLETE)

REFERENCE INFO: REF: PN 520

CLIENT: FALCONBRIDGE LTD.
PROJECT: NONE

SUBMITTED BY: J. DA COSTA
DATE PRINTED: 17-MAR-86

ORDER	ELEMENT	NUMBER OF ANALYSES	LOWER DETECTION LIMIT	EXTRACTION	METHOD
1	Au Gold Assay	37	0.01 G/T		

SAMPLE TYPES	NUMBER	SIZE FRACTIONS	NUMBER	SAMPLE PREPARATIONS	NUMBER
DRILL CORE	37	-200	37	Seepie Preparation	37

APPROVED BY: MR. RAY BAND

REPORT COPIES TO: MR. RAY BAND

INVOICE TO: MR. RAY BAND

P.B. Bondar
Jan 12 '87

C. W. Wilson



418-0808

6

REPORT: 418-0808

PROJECT: NONE

PAGE 1

SAMPLE NUMBER	ELEMENT UNITS	Au G/T
KB-5701		<0.01
KB-5702		<0.01
KB-5703		<0.01
KB-5704		<0.01
KB-5705		<0.01
KB-5706		<0.01
KB-5707		<0.01
KB-5708		<0.01
KB-5709		<0.01
KB-5710		<0.01
KB-5711		<0.01
KB-5712		<0.01
KB-5720		<0.01
KB-5721		<0.01
KB-5722		<0.01
KB-5723		<0.01
KB-5724		<0.01
KB-5725		<0.01
KB-5726		<0.01
KB-5727		<0.01
KB-5728		<0.01
KB-5729		0.01
KB-5730		<0.01
KB-5731		<0.01
KB-5732		<0.01
KB-5733		<0.01
KB-5734		<0.01
KB-5735		0.03
KB-5736		<0.01
KB-5737		<0.01
KB-5738		<0.01
KB-5739		0.01
KB-5740		<0.01
KB-5741		<0.01
KB-5742		<0.01
KB-5743		<0.01
KB-5744		0.06

*KB-69
 Entered
 HB*

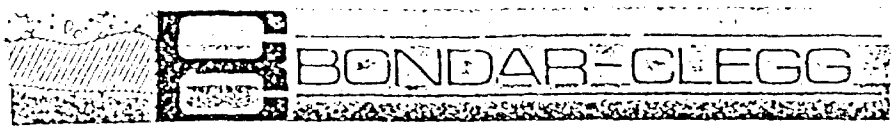
*KB-69
 Entered
 HB*

*KB-69
 Entered
 HB*

I. Rawlinson

Chief Chemist

Bondar-Clegg & Company Ltd.
 5420 Canara Rd.
 Grimsby, Ontario
 Canada L3M 1A1
 Phone (416) 732-2226
 Telex 01



Certificate
 of Analysis

7

REPORT: 416-6897 (COMPLETE)

REFERENCE INFO: REF: 526

CLIENT: FALCONBRIDGE LTD.
 PROJECT: NONE

SUBMITTED BY: J. DA COSTA
 DATE PRINTED: 7-MAR-86

ORDER	ELEMENT	NUMBER OF ANALYSES	LOWER DETECTION LIMIT	EXTRACTION	METHOD
1	Au Gold Assay	7	0.01 g/T		

SAMPLE TYPES	NUMBER	SIZE FRACTIONS	NUMBER	SAMPLE PREPARATIONS	NUMBER
DRILL CORE	7	-200	7	Sample Preparation	7

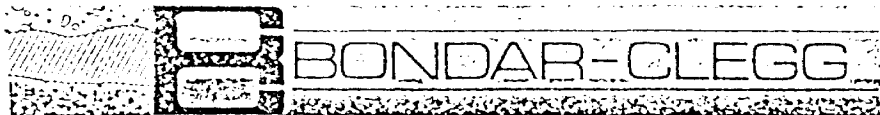
REMARKS: < MEANS LESS THAN.

REPORT COPIES TO: MR. RAY BAND

INVIOCE TO: MR. RAY BAND

R.B. Band
 Jan 2 86

(Signature)



REPORT: 416-0807

PROJECT: WQHE

PAGE 1

SAMPLE NUMBER	ELEMENT UNITS	Au G/T
------------------	------------------	-----------

KB-5713		<0.01
KB-5714		<0.01
KB-5715		0.01
KB-5716		<0.01
KB-5717		0.02

*KB-69
Entered
by*

KB-5718		<0.01
KB-5719		<0.01

C. Hamilton

REPORT: 416-1084 (COMPLETE)

REFERENCE INFO: PMS20

CLIENT: FALCONBRIDGE LTD.
PROJECT: NGHE

SUBMITTED BY: J. DACOSTA
DATE PRINTED: 3-APR-86

ORDER	ELEMENT	NUMBER OF ANALYSES	LOWER DETECTION LIMIT	EXTRACTION	METHOD
1	Au Gold - Assay	44	0.01 G/T		

SAMPLE TYPES	NUMBER	SIZE FRACTIONS	NUMBER	SAMPLE PREPARATIONS	NUMBER
DRILL CORE	44	-200	44	Sample Preparation	44

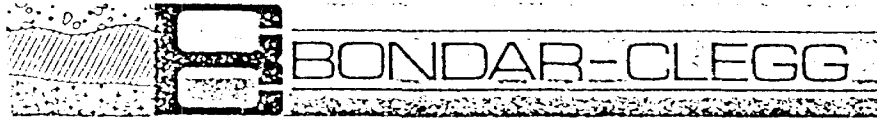
REMARKS: < MEANS LESS THAN

REPORT COPIES TO: MR. KAY BAND

INVOICE TO: MR. KAY BAND

R. Bondar
Jan 12 '87

J. Rauline



REPORT: 416-1084

PROJECT: NONE

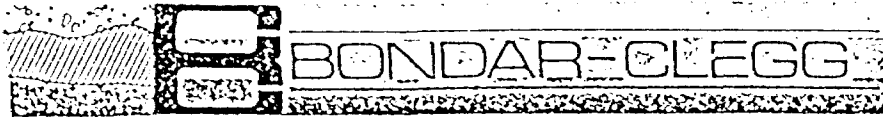
PAGE 1

SAMPLE NUMBER	ELEMENT UNITS	Au G/T	SAMPLE NUMBER	ELEMENT UNITS	Au G/T
			K85879		1.19
			K85880		0.99
			K85881		0.20
			K85882		0.08
K85853		0.05			
K85854		0.02			
K85855		0.03			
K85856		0.02			
K85857		0.10			
K85858		0.02			
K85859		0.02			
K85860		0.13			
K85861		0.02			
K85862		0.03			
K85863		0.16			
K85864		0.05			
K85865		0.03			
K85866		0.03			
K85867		0.45			
K85868		1.05			
K85869		0.13			
K85870		0.23			
K85871		0.06			
K85872		0.07			
K85873		0.05			
K85874		0.41			
K85875		0.04			
K85876		0.06			
K85877		0.26			
K85878		0.41			

*KB-73
Entered
AB*

*KB-73
Entered
AB*

C. Bauline



11

REPORT: 416-1160 (COMPLETE)

REFERENCE INFO: REF:PM520

CLIENT: FALCONBRIDGE LTD.
PROJECT: NONE

SUBMITTED BY: FALCON
DATE PRINTED: 10-APR-86

ORDER	ELEMENT	NUMBER OF ANALYSES	LOWER DETECTION LIMIT	EXTRACTION	METHOD
1	Av Gold - Assay	53	0.01 G/T		

SAMPLE TYPES	NUMBER	SIZE FRACTIONS	NUMBER	SAMPLE PREPARATIONS	NUMBER
DRILL CORE	54	-200	54	Sample Preparation	54

REMARKS: < MEANS LESS THAN
SAMPLE NO. XB2349 AND 50 WERE COMBINED DURING
THE SAMPLE PREPARATION PROCEDURE.

REPORT COPIES TO: MR. RAY BARD

INVOICE TO: MR. RAY BARD

R. Bard
Jan 12 87

C. Hantler

0 2220



BONDAR-CLEGG

Certificate of Analysis

12

REPORT: 416-1160

PROJECT: NONE

PAGE 1

SAMPLE NUMBER	ELEMENT UNITS	Au G/T	SAMPLE NUMBER	ELEMENT UNITS	Au G/T
KB-2304		0.97	KB-2344		<0.01
KB-2305		0.02	KB-2345		<0.01
KB-2306		<0.01	KB-2346		<0.01
KB-2307		<0.01	KB-2347		0.02
KB-2308		<0.01	KB-2348		0.07
KB-2309		<0.01	KB-2349		0.10
KB-2310		<0.01	KB-2350		
KB-2311		<0.01	KB-2351		0.30
KB-2312		<0.01	KB-2352		0.10
KB-2313		<0.01	KB-2353		0.09
KB-2314		0.05	KB-2354		0.03
KB-2315		0.03	KB-2355		0.12
KB-2316		0.02	KB-2356		0.02
KB-2317		<0.01	KB-2357		0.02
KB-2318		0.01			
KB-2319		0.09			
KB-2320		<0.01			
KB-2321		<0.01			
KB-2322		<0.01			
KB-2323		<0.01			
KB-2324		<0.01			
KB-2325		<0.01			
KB-2326		<0.01			
KB-2327		<0.01			
KB-2328		0.10			
KB-2329		0.50			
KB-2330		0.04			
KB-2331		0.04			
KB-2332		<0.01			
KB-2333		<0.01			
KB-2334		<0.01			
KB-2335		<0.01			
KB-2336		0.03			
KB-2337		<0.01			
KB-2338		<0.01			
KB-2339		<0.01			
KB-2340		0.01			
KB-2341		<0.01			
KB-2342		<0.01			
KB-2343		<0.01			

KB-73

KB-74

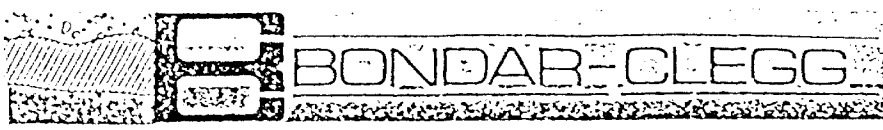
B

KB-74

B

P. Raulin

Falconbridge Ltd.
 100 West Rd.
 Ontario
 L1Y 8N5
 Phone (416) 749-2220
 Telex



Certificate of Analysis

13

REPORT: 416-1130 (COMPLETE)

REFERENCE INFO: REF: PA 520

CLIENT: FALCONBRIDGE LTD.
PROJECT: HOME

SUBMITTED BY: FALCONBRIDGE
DATE PRINTED: 8-APR-86

ORDER	ELEMENT	NUMBER OF ANALYSES	LOWER DETECTION LIMIT	EXTRACTION	METHOD
1	Au Gold -Assay	21	0.01 G/T		

SAMPLE TYPES	NUMBER	SIZE FRACTIONS	NUMBER	SAMPLE PREPARATIONS	NUMBER
DRILL CORE	21	-200	21	Sample Preparation	21

REMARKS: NO HEAVY METALS

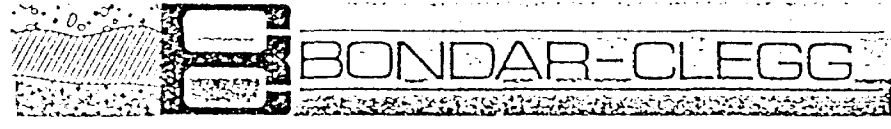
REPORT COPIES TO: MR. RAY BOND

INVOICE TO: MR. RAY BOND

R. Bond
 Jan 12 '87

C. Harker

& Company Ltd.
 1000
 2nd Floor
 1000
 1000
 1000



REPORT: 416-1130

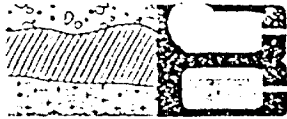
PROJECT: NONE

PAGE 1

SAMPLE NUMBER	ELEMENT UNITS	Rd G/T
KB 5883		0.04
KB 5884		0.24
KB 5885		0.03
KB 5886		0.14
KB 5887		0.01
KB 5888		0.01
KB 5889		0.01
KB 5890		<0.01
KB 5891		0.05
KB 5892		2.05
KB 5893		0.02
KB 5894		<0.01
KB 5895		0.02
KB 5896		0.36
KB 5897		0.19
KB 5898		0.18
KB 5899		1.10
KB 5900		0.03
KB 2301		<0.01
KB 2302		<0.01
KB 2303		<0.01

KB-13
Ground
fb

C. Coulter



FALCONBRIDGE LTD.
MR. RAY BAND
100- 3074 PORTAGE AVE.
WINNIPEG, MANITOBA
R3Y 0Y2

RECEIVED
MAR 12 1986
Falconbridge Metal Miss Ltd.

Invoice : 116257, Page 1

Date : 7-MAR-86

Report No: 416-0807

Project : NONE

Reference: REF: 520

7 Analyses of Gold -Assay	at \$ 8.50	\$ 59.50			✓
Subtotal		\$ 59.50	\$	59.50	
Sample Preparation					
7 Samples of Sample Preparation	at \$ 3.75	\$ 26.25			✓
Subtotal		\$ 26.25	\$	26.25	
Miscellaneous Charges					
Shipping Charges EXCLUDED		\$ 77.95			
Subtotal		\$ 77.95	✓ \$	77.95	
Invoice Total:			\$	163.70 Cdn	

RBB

Jan 12 '87

6257
3-07-86



Invoice : 116258. Page 1

FALCONBRIDGE LTD.
MR. RAY BAND
100- 3074 PORTAGE AVE.
WINNIPEG, MANITOBA
R3Y 0Y2

RECEIVED
MAR 12 1986

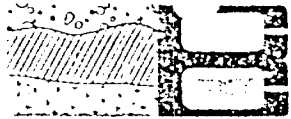
Falconbridge Nickel Mines Ltd.

Date : 7-MAR-86
Report No: 416-0787
Project : NONE
Reference: REF: PN 520

13 Analyses of Gold -Assay	at \$ 8.50	\$ 110.50		
Subtotal		\$ 110.50	\$ 110.50	✓
Sample Preparation				
13 Samples of Sample Preparation	at \$ 3.75	\$ 48.75		
Subtotal		\$ 48.75	\$ 48.75	✓
Miscellaneous Charges			<u>159.25</u>	
Shipping Charges * excluded.		\$ 41.15		
Subtotal		\$ 41.15	\$ 41.15	
Invoice Total:			\$ 200.40 Cdn	

R. B. Band
Jan 12 87

8
-07-86



FALCONBRIDGE LTD.
MR. RAY SAND
100-3074 PORTAGE AVE.
WINNIPEG, MANITOBA
R5Y 0Y2

RECEIVED

MAR 21 1986

Falconbridge Nickel Mines Ltd.

Invoice : 115449. Page 1

Date : 18-MAR-86

Report No: 416-0808

Project : NONE

Reference: REF: PN 520 / 705

37 Analyses of Gold - Assay	at \$ 9.50	\$ 314.50			✓
Subtotal		\$ 314.50	\$	314.50	
Sample Preparation					
37 Samples of Sample Preparation	at \$ 3.75	\$ 138.75			✓
Subtotal		\$ 138.75	\$	138.75	
Invoice Total:			\$	453.25 Cdn	

B.O.
R.B. Bond
Jan 12 '87

149
-18-86

FALCONBRIDGE LTD.
 MR. RAY BAND
 100- 3074 FORTAGE AVE.
 WINNIFEG, MANITOBA
 R3Y 0Y2

Invoice : 116704, Page 1

Date : 3-APR-86

Report No: 416-1084

Project : NONE

Reference: FN520

70⁵

44 Analyses of Gold -Assay	at \$ 8.50	\$ 374.00		
Subtotal		\$ 374.00	\$ 374.00	✓
Sample Preparation				
44 Samples of Sample Preparation	at \$ 3.75	\$ 165.00		
Subtotal		\$ 165.00	\$ 165.00	✓
Miscellaneous Charges				
Shipping Charges <u>EXCLUDED</u>		\$ 90.00		
Subtotal		\$ -90.00	\$ -90.00	✓

Invoice Total: \$ 629.00 Cdn

ONLY 30 SAMPLES FILED FOR ASSESSMENT CREDIT.

1 PRORATED COST $30/44 \times \$659.00 = \428.86 \$367.50
 $\$539$

RBBand 116704

~~LESS $30/44 \times \$90 = \61.36~~

ANALYTICAL CHARGES 30 SAMPLES = \$367.50 04-03-86

RBBand
 Jan 12 87

RECEIVED
 APR 8 1986
 Falconbridge Minerals Ltd.

RECEIVED
APR 11 1986

FALCONBRIDGE LTD.
MR. RAY BAND
100- 3074 PORTAGE AVE.
WINNIPEG, MANITOBA
R3Y 0Y2

Falconbridge Nickel Mines Ltd.

Invoice : 116753 Page 1

Date : 8-APR-86

Report No: -16-1130

Project : NONE

Reference: REF: FN 510 705

21 Analyses of Gold - Assay	at \$ 8.50	\$ 178.50		
Subtotal		\$ 178.50	\$ 178.50	✓
Sample Preparation				
21 Samples of Sample Preparation	at \$ 3.75	\$ 78.75		
Subtotal		\$ 78.75	\$ 78.75	✓
Miscellaneous Charges (EXCLUDED)			\$ 257.25	
Shipping Charges		\$ 38.60		
Subtotal		\$ 38.60	\$ 38.60	✓
Invoice Total:			295.85 Cdn	

R.B. Band
Jan 2 '87

116753
04-08-86

FALCONBRIDGE LTD.
MR. RAY BAND
100- 3074 PORTAGE AVE.
WINNIPEG, MANITOBA
R3Y 0Y2

RECEIVED
APR 17 1986

Falconbridge Nickel Mines Ltd.

Invoice : 116840, Page 1
Date : 14-APR-86
Report No: 416-1160
Project : NONE
Reference: REF:PN520 - 705

53 Analyses of Gold -Assay	at \$ 8.50	\$ 450.50	
Subtotal		\$ 450.50	\$ 450.50 ✓
Sample Preparation			
53 Samples of Sample Preparation	at \$ 3.75	\$ 198.75	
Subtotal		\$ 198.75	\$ 198.75 ✓
Miscellaneous Charges			\$ 649.25
Shipping Charges EXCLUDED		\$ 105.20	
Subtotal		\$ 105.20	\$ 105.20 ✓

Invoice Total:

\$ 754.45 Cdn

R. B. Band
Jan 12 87

R.B.
116840
04-14-86

FALCONBRIDGE LTD.
 MR. RAY BAND
 100- 3074 PORTAGE AVE.
 WINNIPEG, MANITOBA
 R3Y 0Y2

Invoice : 116985. Page 1
 Date : 23-APR-86
 Report No: 416-1352
 Project : NONE
 Reference: FN 520

12 Analyses of Gold -150 Fraction	at \$ 8.50	\$ 102.00	✓
12 Analyses of Gold +150 Fraction	at \$ 8.50	\$ 102.00	✓
12 Analyses of Gold Weight Average	at \$ 0.00	\$ 0.00	
12 Analyses of Au Test Weight -150	at \$ 0.00	\$ 0.00	
12 Analyses of Weight -150 Obtained	at \$ 0.00	\$ 0.00	
12 Analyses of Weight +150 Obtained	at \$ 0.00	\$ 0.00	
Subtotal		\$ 204.00	\$ 204.00

Sample Preparation			
12 Samples of Sample Preparation	at \$ 5.00	\$ 60.00	
Subtotal		\$ 60.00	\$ 60.00

Invoice Total: \$ 264.00 Cdn

ONLY SIX SAMPLES FILED FOR ASSESSMENT
 CREDIT: PRORATED COST ~~\$264~~ × $\frac{6}{12}$ × \$204
 = \$132

RBB

RBB
 Jan 12 87

Vendor Number			2220	Cr X
Account	Cost Centre	Amount		
6056108	005520	26400		
Approved	Cosd	Ext. & Accts		Cheque Number
RBB	RBB	13		297

116985
 04-23-86

XRAL

X-RAY ASSAY LABORATORIES INC.

1885 LESLIE STREET • DON MILLS ONTARIO M3B 3J4 • (416) 445-5755

COPY TO

SE TO

FALCONBRIDGE LIMITED
ATTN: J. DACOSTA
3074 PORTAGE AVENUE, SUITE 100
WINNIPEG, MANITOBA
RCK 0Y2

SHIPPED TO

FALCONBRIDGE LIMITED
ATTN: J. DACOSTA
3074 PORTAGE AVENUE, SUITE 100
WINNIPEG, MANITOBA
RCK 0Y2

CUSTOMER NO. 223

INVOICE NO.	INVOICE DATE	ORDER NO.	DATE SHIPPED
27090	12-MAR-86	22811	4-MAR-86

TERMS

TERMS NET 30 DAYS
1.5% PER MONTH INTEREST ON ACCOUNT OVER 30 DAYS

SP.O. NO.	CLIENT PROJECT NO. 520 - 705	TYPE OF SAMPLES SUBMITTED WHOLE CORE
-----------	---------------------------------	---

PAGES PAILS	SHIPPED VIA SMALL FRY	WAY BILL NO. 57650	SHIPPED FROM
----------------	--------------------------	-----------------------	--------------

QUANTITY	DESCRIPTION METHOD	XRAL CODE	UNIT COST	AMOUNT
20	ALI, PPB	2, 10, 7, 0, 0, 0	6.50	130.00 ✓
20	WHOLE CORE, CRUSHING & MILLING (CHROME STEEL MILL)	99, 1, 0, 0, 0, 0	2.75	55.00 ✓
			SUB-TOTAL	\$ 185.00

RB Bar
Jan 12 87
90
12-86

SHIPPING CHARGES 35.15 EXCLUDED	CUSTOM BROKERAGE	TELEX	MINIMUM CHARGES
OTHER	SURCHARGE - RUSH SERVICE		\$ 35.15 ✓

ORIGINAL INVOICE

TOTAL

\$ 220.15

100% OF
 MINERAL
 RIGHTS
 HELD BY
 FALCONBRIDGE
 LTD.

X-RAY ASSAY LABORATORIES IN

1835 LESLIE STREET • DON MILLS ONTARIO M3B 3J4 • (416) 445-5755
 COPY TO

FALCONBRIDGE LIMITED
 ATTN: J. DACCOSTA
 3074 PORTAGE AVENUE, SUITE 100
 WINNIPEG, MANITOBA
 R3K 0Y2

RECEIVED
 APR 16 1986

Falconbridge Nickel Mines Ltd.

SUBMITTED TO

FALCONBRIDGE LIMITED
 ATTN: J. DACCOSTA
 3074 PORTAGE AVENUE, SUITE 100
 WINNIPEG, MANITOBA
 R3K 0Y2

CUSTOMER NO. 223

INVOICE NO.	INVOICED DATE	WORK ORDER NO.	DATE SHIPPED
27405	11-APR-86	23017	24-MAR

TERMS

TERMS NET 30 DAYS
 1.5% PER MONTH INTEREST ON ACCOUNT OVER 30 DAYS

CLIENTS P.O. NO.	CLIENT PROJECT NO. PN-520 705	TYPE OF SAMPLES SUBMITTED WHOLE CORE	WAY BILL NO. 60511	SHIPPED FROM WINNIPEG
NO OF PKGS 6 PAILS	SHIPPED VIA SMALL FRY			

QUANTITY	DESCRIPTION METHOD	TOTAL CODE	UNIT COST	AMOUNT
1. 64	ALL PPE	10, 7, 0, 0, 0	6.50	✓ 416.00
2. 64	CRUSHING & MILLING	1, 0, 0, 0, 0	2.75	✓ 176.00

ONLY 31 SAMPLES FILED FOR
 ASSESSMENT CREDIT
 PRORATED COST $31/64 \times \$685 = \331.85 ~~to \$592~~
 = ~~\$331.85~~ \$286.75

RBBaul RBBaul
 Jan 12 87
 7405
 1-11-86

SUB-TOTAL \$ 592.00

MISC CHARGES	SHIPPING CHARGES 93.10 EXCLUDED	CUSTOM BROKERAGE	TELEX	MINIMUM CHARGES	
	OTHER			SURCHARGE - RUSH SERVICE	\$ 93.10

ORIGINAL INVOICE

TOTAL CON \$ 685.10

X-RAY ASSAY LABORATORIES INC.

1885 LESLIE STREET • DON MILLS ONTARIO M3B 3J4 • (416) 445-5755

INVOICE TO

FALCONBRIDGE LIMITED
 ATTN: J. DACCOSTA
 3074 PORTAGE AVENUE, SUITE 100
 WINNIPEG, MANITOBA
 R3K 0Y2

COPY TO

SUBMITTED TO

FALCONBRIDGE LIMITED
 ATTN: J. DACCOSTA
 3074 PORTAGE AVENUE, SUITE 100
 WINNIPEG, MANITOBA
 R3K 0Y2

CUSTOMER NO. 229

INVOICE NO.	INVOICE DATE	WORK ORDER NO.	DATE SUBMITTED
27406	11-APR-86	23084	31-MAR-85

TERMS

TERMS NET 30 DAYS
 1.5% PER MONTH INTEREST ON ACCOUNT OVER 30 DAYS

CLIENTS P.O. NO.	CLIENT PROJECT NO.	TYPE OF SAMPLES SUBMITTED
	FN-520	WHOLE CORE

NO. OF PAGES	SHIPPED VIA	WAY BILL NO.	SHIPPED FROM
8 PAGES	SMALL FRY	61143	

QUANTITY	DESCRIPTION	UNIT COST	AMOUNT
1. 70	AU. P.P.B.	6.50	455.00
2. 70	WHOLE CORE, CRUSHING & MILLING (CHROME STEEL MILL)	2.75	192.50

RBD

Jan 12 87

106
11-86

NET TOTAL

\$ 647.50

SHIPPING CHARGES	CUSTOM BROKERAGE	TELEX	MINIMUM CHARGES
100.00	EXCLUDED		
MISC. CHARGES	OTHER	SURCHARGE	RUSH SERVICE

\$ 100.00

ORIGINAL INVOICE

TOTAL

\$ 747.50

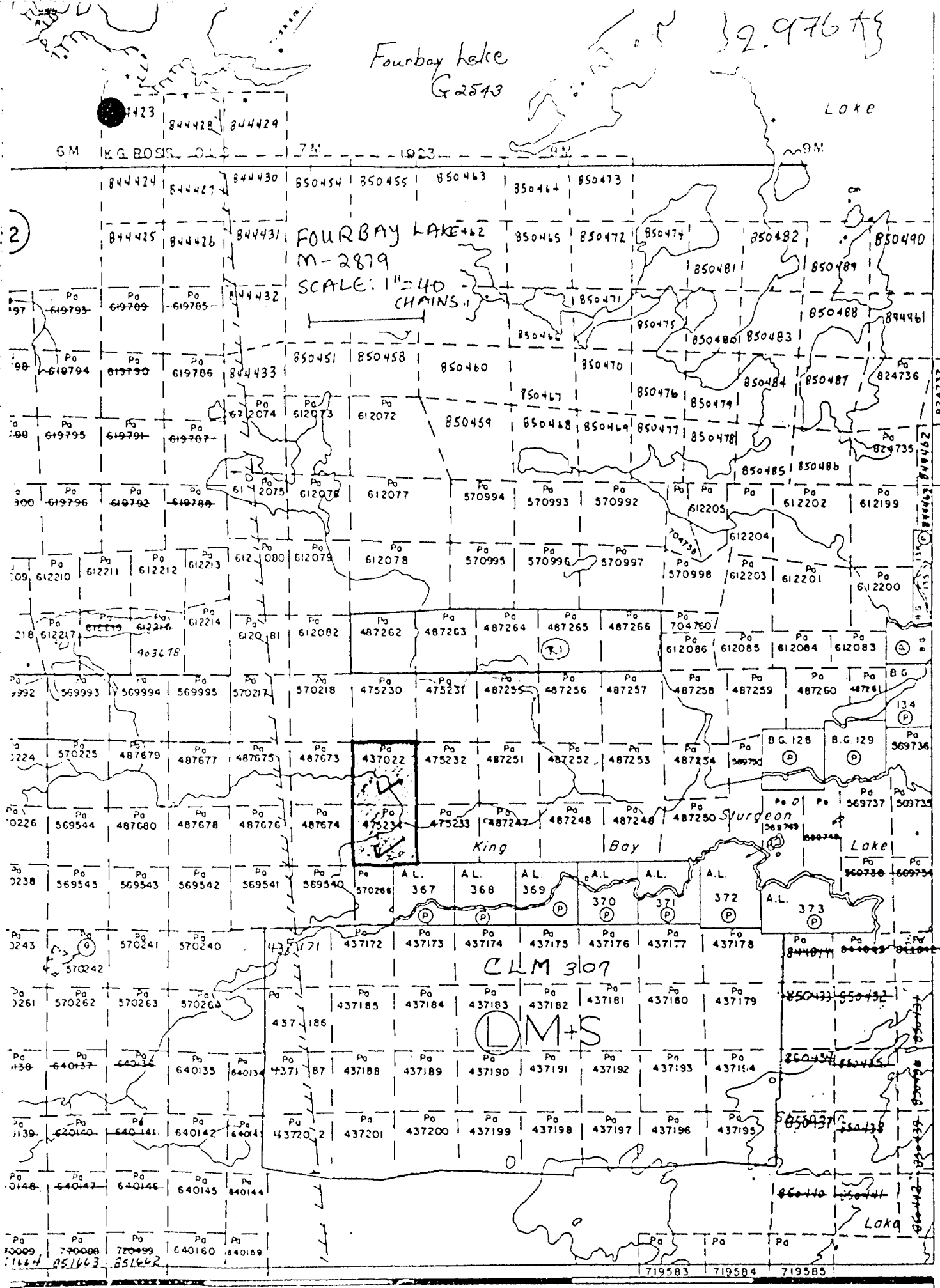


52J02SW0008 52J02SW0075C1 SESEGANAGA LAKE

900

Fourbay Lake
G 2543

9.976



2

FOURBAY LAKE
M-2879
SCALE: 1"=40
CHAINS

LM+S

CLM 307

04'

03'

02'

01'

50' 49' 48' 47' 46' 90°45'

29762

10M

SQUAW LAKE
M-1904
SCALE: 1" = 40 CHAINS

668462
668463
668461
668460

PHILIPPS

BASE LINE

2M

LINE

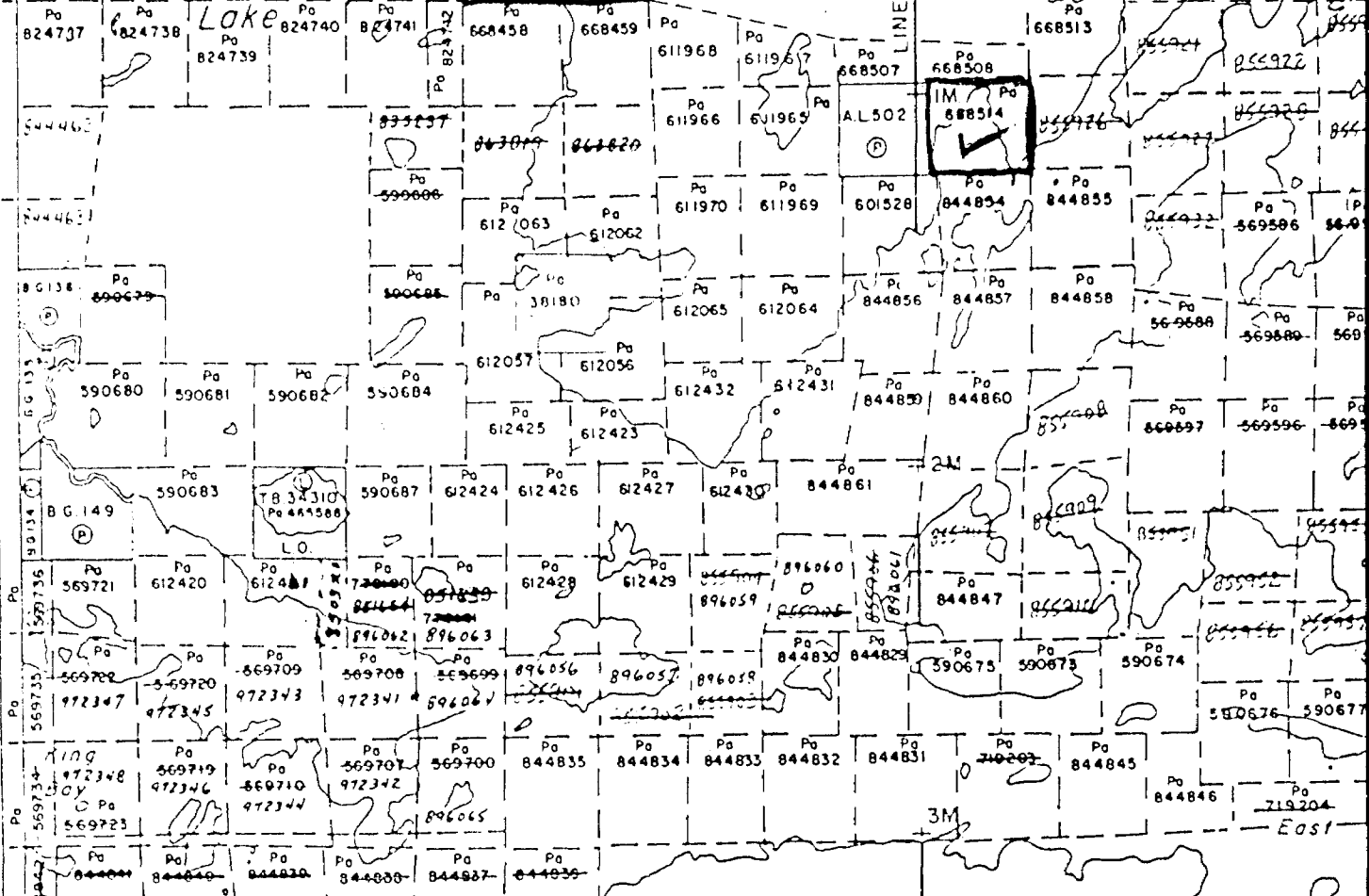
13M

Northest

Lake

AL 502

688514



Squaw Lake
G 3140

Coveney Island

MERIDIAN

90°45'

44'

43'

42'

41'

East



Ministry of Natural Resources

Report of Work (Geophysical, Geological, Geochemical and Expenditures)

#81-16

29767

- Instructions: - Please type or print. - If number of mining claims traversed exceeds space on this form, attach a list. Note: - Only days credits calculated in the "Expenditures" section may be entered in the "Expend. Days Cr." columns. - Do not use shaded areas below.

Amended

Mining Act

R.P. Little Mining hardy

Form header with fields: Type of Survey (Analytical Expenditures), Claim Holder (Steep Rock Resources Inc.), Address (North York Square, 45 Sheppard Ave. East, Suite 302, North York, Ontario M2N 5W9), Survey Company (Falconbridge Limited), Date of Survey (04/03/86 to 23/04/86), Total Miles of line Cut, Name and Address of Author (R.B. Band 100-3074 Portage Avenue, Winnipeg, Manitoba R3K 0Y2)

Table for Special Provisions, Man Days, and Airborne Credits. Includes categories like Geophysical (Electromagnetic, Magnetometer, Radiometric, Other) and Geological/Geochemical.

Table for Mining Claims Traversed. Columns: Mining Claim Prefix, Mining Claim Number, Expend. Days Cr. Includes handwritten entries for claims 668460 through 668514.

Form for Expenditures (excludes power stripping), Type of Work Performed (Analytical Section 77-19), Performed on Claim(s) (Pa 437022, Pa 475234), Calculation of Expenditure Days Credits (Total Expenditures \$3193.50 / 15 = 212.9), and Instructions.

Form for Office Use Only, including Date Recorded (Jan. 29, 1987), Mining Record, and Date Approved as Amended (87.3.31).

Certification Verifying Report of Work. Includes Date (Jan 27/87), Recorded Holder or Agent Signature (R.B. Band), Name and Postal Address of Person Certifying (R.B. Band 100-3074 Portage Avenue, Winnipeg, Manitoba R3K 0Y2), Date Certified (Jan 27/87), and Certified by Signature (R.B. Band).



FALCONBRIDGE LIMITED

Suite 100 - 3074 Portage Ave
Winnipeg, Manitoba, R3K 0Y2
Telex 07-57251 Telephone 204-888-9860

January 12, 1987

Mining Recorder
Patricia Division
P.O. Box 669
Court House
Sioux Lookout, Ontario
POV 2T0

Dear Mr. Spooner:

Attached please find a report of work covering analytical expenditures on samples from three diamond drill holes on the King Bay property. Location plans and drill logs for these three holes have already been filed with your office (reports of work numbers 86-71 (DDH KB-69), 86-100 (KB-73) and 86-146 (KB-74).

Copies of the sample logs, showing footages sampled, sample description and gold values are attached for DDH KB 69, 73 and 74.

The analytical work was performed by Bondar Clegg & Co. Ltd. and X-Ray Assay Labs. Copies of the laboratory reports and invoices are attached. A detailed breakdown of analytical charges is as follows:

a) Bondar Clegg & Co. Ltd.

Report Number	Invoice number	\$
416-0787	116258	159.25
416-0807	116257	85.75
416-0808	116449	453.25
416-1084	116704 (part)	367.50
416-1130	116753	257.25
416-1160	116840	649.25
416-1352	116985	<u>102.00</u>
	Sub-total	2,074.25

b) X-Ray Assay Laboratories Limited

22811	27090	185.00
23017	27405 (part)	286.75
23084	27406	<u>647.50</u>
	Sub-total	1,119.25

These invoices have been paid in full.

RECEIVED

FEB - 9 1987

MINING LANDS SECTION

...2

January 12, 1987
Mining Recorder
page 2

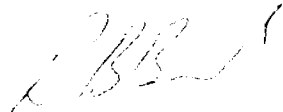
The total analytical cost for both laboratories is \$3,193.50. An assessment work credit of 212.9 days is claimed for this expenditure.

This work is filed on behalf of Steep Rock Resources Inc., now the recorded holder of a 100% interest in the property. All work was performed while Falconbridge Limited held a recorded interest in the claims. At the time the work was done these claims formed parts of a contiguous block, in which Falconbridge Limited held either a 51% or 100% recorded interest in all the claims.

I trust you will find everything in order.

Yours truly,

FALCONBRIDGE LIMITED



R.B. Band
Senior Project Geologist

RBB/lb

Attachments

cc: Tim Wood, Steep Rock Resources, Inc.

