



52J02SW0040 52J02SW0021 FOURBAY LAKE

010

Diamond Drilling

Area Fourbay Lake

Report NO 28

Work performed by: Steep Rock Resources Inc.

Claim NO	Hole NO	Footage	Date	Note
PA 487673	KB-13-83	356.9	Apr/83	(1)
PA 487678	KB-29-83	823.5	Nov/83	(1)
<i>TOTAL</i>	<u>2 DH</u>	<u>1180.4</u>	<i>FT</i>	

Notes: (1) #73-84

756.9 ft
Metres

Drilling Company Kenora Diamond Drilling Limited		Collar Elevation Surface	Req. Location South	Total Length 108.8	Depth of Hole at 45	Location of hole in relation to fixed point on the claim	Map Reference No. Four Bay Lake	Claim No. 487673
Date Hole Started April 21, 1983	Date Completed April 24, 1983	Date Logged May 12, 1983	Logged by G. Clark	Date Submitted May 1/84	Submitted by (Signature) <i>RA Burnatchy P. Eng.</i>		Map Reference No. M-2879	Location (Tap, Lot, Con or Lat and Long) L 1+50W 1+25N
Exploration Co. Owner or Options Steep Rock Resources Inc 40 University Avenue Suite 710 Toronto, Ontario M5J 2G5							Property Name Johnson Property	

Metric From	Metric To	Rock Type	Description Colour, grain size, texture, mineral alteration, etc.	Planar Feature Angle*	Core Section Footage†	Your Sample No.	Sample Metric		Sample Length	Assay†	Au (ppm)	Ag (ppm)
							From	To				
6.1	39.4	mafic flow (pillow)	fine grained, green, some hyaloclastite between subvolcanic blue carbonate, some white Qtz < 1% py. some selvages up to 5% py po minor cp			38717	12.10	12.85	0.76	Nil		
39.4	50.8	mafic flow	fine-red gr, possibly pillowed altered to wormlike texture, light green, semi translucent mineral py at core (altered ferro mag?)			18	15.39	15.85	0.45	"		
			white on outer edges, minor calcite veins < 1% sulphides			19	21.06	21.67	0.61	"		
50.8	69.2	mafic flow (pill)	fine gr, green, pillowed/hyaloclastite, fractured but welded, some calcite veining < 1% py po, epidote veined, calcite veins ~ 40 ~ 1/8"			20	33.53	33.74	0.21	100/70		
69.2	78.0	hyaloclastic breccia	fine gr, dk green to epidote green, possibly autoclasticated			21	42.22	42.64	0.42	nil		
78.0	83.1	mafic flow (pill)	fine gr, green, unbrecciated, some alteration to mottled textures			22	43.95	44.90	0.95	"		
83.1	86.1	carbonatized mafic flow	fine gr, buff, softer, foliation ~ 45° some calcite filled, low angle all ~ 1/8"			23	48.07	49.20	1.13	"		
86.1	91.1	arkosic sediment	fine to med gr, at contact to volc, bedded py ~ 1.5 ft up to 10% py+cp+sp, then downwards diss, sulphides + minor beds			24	52.24	52.30	0.06	"		
91.1	95.5	arkose greywacke	bedding 45° black to grey minor calcite veins med gr, 3 mm Qtz eyes some 3mm feldspars in some sections			25	53.65	54.41	0.76	10		
95.5	96.4	Q.F.P.	crudely bedded med grained, sed or tuff?, feldspars not zoned, sub to archedral			26	63.19	63.80	0.61	10		
96.4	97.9	dirty arkose	4 mm size, Qtz eyes 2 mm, 40° alignment plane < 1% sulphides			27	63.80	64.62	0.82	10		
97.9	105.2	Q.F.P.	fine - med grained, no sulphides			28	65.78	66.36	0.58	nil		
105.2	106.0	Q.F.P. to mafic tuff	bedding 45° black to grey minor calcite veins crudely bedded			29	67.21	68.18	0.97	"		
106.0	108.8	carbonatized mafic tuff	med gr, 3 mm Qtz eyes some 3mm feldspars in some sections			30	70.74	71.51	0.77	"		
			crudely bedded			31	83.82	84.83	1.01	"		
			med grained, sed or tuff?, feldspars not zoned, sub to archedral			32	84.83	85.98	1.19	"		
			4 mm size, Qtz eyes 2 mm, 40° alignment plane < 1% sulphides			33	86.17	86.72	0.55	740/770		0.0220
			fine - med grained, no sulphides			34	86.72	87.42	0.9	nil		
			fine med gr, massive, fine blue Qtz veins, crude alignment			35	87.42	88.85	1.43	"		
			alteration feldspar rims, py in fractures & open spaces			36	88.85	90.31	1.45	"		
			med-coarse gr, brecciation, some py in fractures < 2%			37	90.31	91.03	0.76	"		
			brecciated at bottom, calcite veins and filling - 45°			38	97.14	97.90	0.76	10		
			no sulphides noted			39	98.18	98.42	0.24	20		
						40	98.85	99.21	0.36	380		0.0110
						41	99.21	100.49	1.28	30		
						42	105.40	106.22	0.82	90		
						43	106.22	107.75	1.53	nil		
						44	107.75	108.81	1.06	"		

PATRICIA MINING DIV.
RECEIVED
MAY - 3 1984
A.M. P.M.
7 8 9 10 11 12 1 2 3 4 5 6

* For features such as foliation, bedding, schistosity, measured from the long axis of the core.

† Additional credit available. See Assessment Work Regulation



Diamond
Drilling
Log

(823.5 Ft)

Fill in on every page → Hole No. KB-29-83 Page No. 1 of 4

Drilling Company Kenora Diamond Drilling Limited		Collar Elevation Surface	Bearing of hole from true North Az 210°	Total Metres 251.0m	Dip of Hole at Collar 45°	Location of hole in relation to a fixed point on the claim.	Map Reference No. M-2879	Claim No. PA 487678
Date Hole Started Nov 19, 1983	Date Completed Nov 28/1983	Date Logged Dec 9-15/83	Logged by R.A. Bernatchez		30.5	43	Location (Twp, Lot, Con or Lat and Long) Fourbay Lake area Line	
Exploration Co., Owner or Optionee Steep Rock Resources Inc		Date Submitted May 1/84	Submitted by (Signature)		61.0	45	Lat 50° 01.5' 4+00W	
					91.5	37	Long 90° 48.2' 2+50S	
					121.9	38	Property Name King Bay Property (Johnson Pr	

Footage		Rock Type	Description <small>Colour, grain size, texture, minerals, alteration, etc.</small>	Planar Feature Angle *	Core Specimen Footage †	Your Sample Footage		Sample Length	Au ppb	Assays ‡
From	To					Sample No.	From			
0	2.75	overburden				44792	2.7	4.0	1.3	
2.75	8.1	Qtz-feld-porph b.q.e. to q.v. altered section	30-50% feldspar unaltered and altered, colour flesh, white and greenish when altered; qtz eyes blue, 5-20% fine gr grey matrix, numerous fractures from 2.7 to 4.8m with rusty gossan surface, py,po,cp; diss po,cp in porph, occasional 3-6mm blue qtz calcite veinlet po,cp,py.			93	4.0	4.9	0.9	10
						94	4.9	7.0	2.1	nil
						95	7.0	8.1	1.1	nil
						96	15.6	16.7	1.1	60/50
						97	16.7	18.9	2.2	nil
						98	18.9	20.4	1.5	40
						99	20.4	22.0	1.6	20
8.1	15.6	Mafic vol	dark green f.g., occas calcite veinlet 30-40% to core, massive			44800	22.0	23.1	1.1	20
				2.5cm		01	23.1	23.5	0.4	20
				b.q.v.		02	23.5	24.8	1.3	30
				p.y. p.o.		03	24.8	26.4	1.6	nil
15.6	16.4	qtz-feld-porph	contact 15-40° slightly altered, diss po,cp; fractures with calcite py,cp,po chlorite			04	26.4	27.7	1.3	20
				c.p.		05	27.7	28.0	0.3	10
				1.3cm		06	28.0	29.1	1.1	nil
				b.q.v.		07	29.1	30.9	1.8	nil
16.4	19.0	mafic vol	f.g., green, occas calcite veinlets, calcite rich section 60.8 to 61.6 ft, po,cp epidote			08	30.9	32.6	1.7	40
						09	32.6	34.0	1.4	50
19.0	56.8	qtz-feld-porph altered & unaltered sections	same as above, qtz rich sections at altered zone, feld rich unaltered, narrow mafic dyke at 22.0-22.2m orange calcite at 27.7m b.q.v. 12mm, 6mm, py at 28.0m. Frequent fractures containing calcite, py,cp; sericite alteration, amphibole rich altered to biotite, feld-spars have a slight orientation 40-50° to core axis; possible fault at 47.6m; scattered blue qtz and calcite veins py,cp,po all angles to core; scattered narrow calcite veinlets 50,30,40,130° to core axis; slight orientation of feldspar phenos 50°, chlorite along fractures and contacts.			10	34.0	35.7	1.7	170/60
						11	35.7	37.6	0.9	30
						12	37.9	38.1	0.2	70
						13	38.3	39.7	1.4	40
						14	39.7	41.0	1.3	20
						15	41.0	42.5	1.5	50
						16	42.5	43.6	1.1	nil
						17	43.6	44.2	0.6	10
						18	44.2	45.6	1.4	10
						19	45.6	46.6	1.0	nil
						20	46.6	48.2	1.6	40
						21	48.2	48.4	0.2	290/280
56.8	57.6					22	48.4	49.7	1.3	60
						23	49.7	51.1	1.4	20
						24	51.1	52.7	1.6	60

**DUPLICATE COPY
POOR QUALITY ORIGINAL
TO FOLLOW**



Ministry of
Natural
Resources

Diamond
Drilling
Log

(823 5 ft)
Metres

Fill in on every page
Hole No. KB-29-83
Page 1 of 4

Drilling Company Kenora Diamond Drilling Limited		Corner Elevation Surface	Bearing of hole on true North Az 210°	Total Footage 251.0	Dip of Hole at core 45°	Location of hole in relation to a fixed point on the claim.	Map Reference No. M-2879	Claim No. Pa 487673	
Date Hole Started Nov 19, 1983	Date Completed Nov. 28, 1983	Date Logged Dec 9-15/83	Logged by R. A. Bernatchez		30.5		Location (Twp., Lot, Con. or Lat. and Long.) Fourbay Lake area Line	Lat 50° 01.5' 4+00W	
Exploration Co., Owner or Offshore Steep Rock Resources Inc		Date Submitted May 1/84	Submitted by (Signature) <i>R.A. Bernatchez</i>		61.0		Long 90° 48.2' 2+50S	Property Name King Bay Property (Johnson Prop)	
					91.5				
					121.9				

Footage		Rock Type	Description Colour, grain size, texture, minerals, alteration, etc.	Placer Feetings Angle	Core Specimen Footage	Your Sample No.	Sample Footage		Sample Length	Au ppb	Assays
From	To						From	To			
0	2.75	overburden				44792	2.7	4.0	1.3	30	
2.75	8.1	Qtz-feld-porph b.g.v. + b.q.v. altered section	30 - 50% feldspar unaltered and altered, colour flesh, white and greenish when altered; qtz eyes blue, 5 - 20%, fine gr grey matrix, numerous fractures from 2.7 to 4.8m with rusty gossan surface; py, po, cp; diss po, cp in porph, occasional 3 - 4 mm blue qtz calcite veinlet po, cp, py			93	4.0	4.9	0.9	10	
8.1	15.6	mafic vol	dark green f.g., occas calcite veinlet 30 - 40% to core, massive			94	4.9	7.0	2.1	nil	
15.6	16.4	qtz-feld-porph	contact 15 - 42° slightly altered, diss po, cp; fractures with calcite py, cp, po chlorite			95	7.0	8.1	1.1	nil	
16.4	19.0	mafic vol	f.g., green, occas calcite veinlets, calcite rich section 60.8 to 61.5 ft, po, cp epidote			96	15.6	16.7	1.1	60/50	
19.0	56.8	qtz-feld-porph altered & unaltered sections	same as above; qtz rich sections at altered zone, feld rich unaltered, narrow mafic dyke at 22.0 - 22.2m orange calcite at 27.7m b.g.v. 12m, 6m py at 28.0m - frequent fractures containing calcite, py, cp; sericite alteration, amphibole rich altered to biotite, feldspars have a slight orientation 40 - 50° to core axis; possible fault at 47.6m; scattered blue qtz and calcite veins py, cp, po all angles to core; scattered narrow calcite veinlets 50, 30, 40, 130° to core axis; slight orientation of feldspar phenos 50°, chlorite along fractures and contacts			97	16.7	18.9	2.2	nil	
56.8	57.6					98	18.9	20.4	1.5	40	
						99	20.4	22.0	1.6	20	
						44800	22.0	23.1	1.1	20	
						01	23.1	23.5	0.4	20	
						02	23.5	24.8	1.3	30	
						03	24.8	26.4	1.6	nil	
						04	26.4	27.7	1.3	20	
						05	27.7	28.0	0.3	10	
						06	28.0	29.1	1.1	nil	
						07	29.1	30.9	1.8	nil	
						08	30.9	32.6	1.7	40	
						09	32.6	34.0	1.4	50	
						10	34.0	35.7	1.7	170/50	
						11	35.7	37.6	0.9	30	
						12	37.9	38.1	0.2	70	
						13	38.3	39.7	1.4	40	
						14	39.7	41.0	1.3	20	
						15	41.0	42.5	1.5	50	
						16	42.5	43.6	1.1	nil	
						17	43.6	44.2	0.6	10	
						18	44.2	45.6	1.4	10	
						19	45.6	46.6	1.0	nil	
						20	45.6	48.2	1.6	40	
						21	48.2	48.4	0.2	290/250	
						22	48.4	49.7	1.3	60	
						23	49.7	51.1	1.4	20	
						24	51.1	52.7	1.6	60	

PATRICIA MINING DIV.
RECEIVED
MAY - 3 - 1984
A.M. 7:8, 9, 10, 11, 12, 1, 2, 3, 4, 5, 6 P.M. 7, 8, 9, 10, 11, 12, 1, 2, 3, 4, 5, 6

7.5 cm b.g.v. py, po



Ontario

Ministry of
Natural
ResourcesDiamond
Drilling
LogFill in on
every page

Hole No

KB-29-83

Page No

2 of 3

Drilling Company Kenora Diamond Drilling Limited		Coiler Elevation surface	Beginning of hole from true North Az 210°	Total Footage 251.0	Dip of Hole at 152.4 m 38° 182.9 m 39° 213.4 m 37.5° 243.8 m 34°	Location of hole in relation to a fixed point on the claim	Map Reference No M-2879	Claim No Pa- 457678
Date Hole Started	Date Completed	Date Logged	Logged by R.A. Bernatchez				Location (Town, Lot, Con or Lat and Long) Fourbay Lake area	
Exploration Co., Owner or Optionee Steep Rock Resources Inc		Date Submitted	Submitted by (Signature)				Property Name King Bay Property	

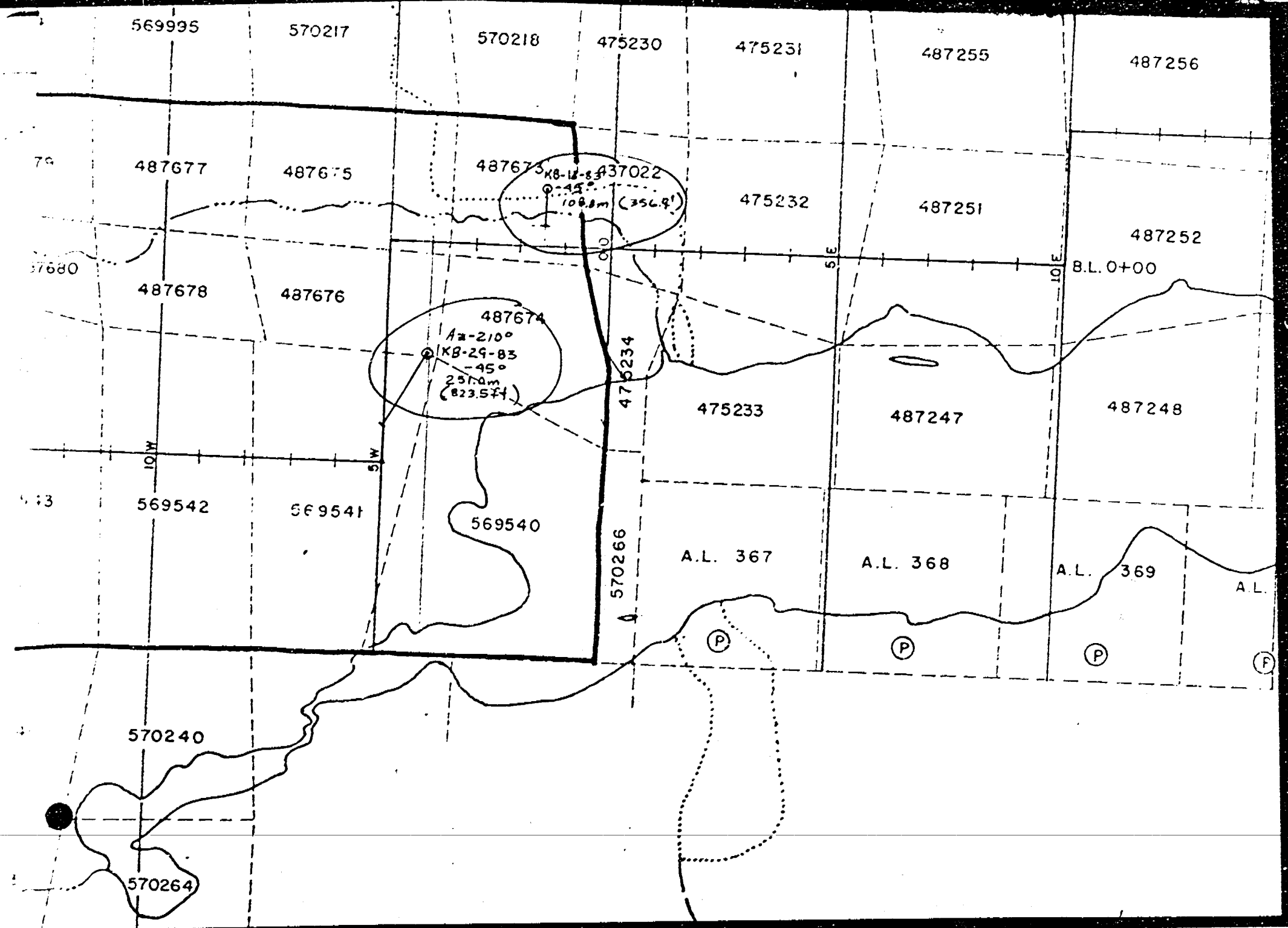
Footage		Rock Type	Description Colour, grain size, texture, minerals, alteration, etc.	Pillar Footage Appx	Core Specimen Footage	Your Sample No.	Sample Footage		Sample Length	Au Assays ppb
From	To						From	To		
57.6	63.8	Qtz-feld-porph	Same as above, blue qtz-eye sections + py, po; mafic dyke at 61.8m, calcite veinlets along fractures with py			44925	52.7	54.1	1.4	30
						26	54.1	55.8	1.7	570/650
						27	55.8	56.9	1.1	90
63.8	66.2	Mafic vol	green, f.g., massive fine fractures filled with calcite; altered along fractures, cp, 2.5cm wedge q.f.p. at 64.2m			28	56.9	57.6	1.3	50
						29	57.6	58.8	1.2	10
						30	58.8	60.4	1.6	nil
66.2	74.6	Qtz-feld-porph	fault zone between 65.5m and 67.7m; fault zone parallel to core from 67.2m to 67.8m, b.g. blebs at 67.8m; fracture set at 69.5m 45° and 130° to core axis; 2.5cm blue qtz vein 20° to core axis at 68m; py, cp (VG?); section from 74.2m to 74.5m looks like recrystallized arkosic grit 5% cal diss, po, cp			31	60.4	61.9	1.5	nil
						32	61.9	63.8	1.7	nil
						33	63.8	66.2	2.4	90
						34	66.2	66.9	0.7	70
						35	66.9	68.0	1.1	550/620
						36	68.0	68.3	0.3	40
74.6	78.2	mafic vol tuff (dyke?)	f.g., green, soft, highly carbonatized diss po, cp in rock and along calcite veinlets, fine diss po, cp, 1 - 2%			38	69.9	71.0	1.1	20
						39	71.0	72.5	1.5	10
						40	72.5	74.2	1.7	10
78.2	81.5	Qtz-feld-porph				41	74.2	74.6	0.4	20
						42	74.6	78.1	1.5	10
81.5	117.5	mafic vol tuff diss po, cp	f.g., green, massive with dilated fractures filled with calcite, tuff contains about 13% sul po, cp (py?), highly carbonatized chloritic schist, scattered calcite veining throughout 10, 60, 40, 30, 20; possible chloritized alteration 85.3m to 92.4m			43	78.1	79.6	0.5	20
						44	78.6	80.2	1.6	10
						45	80.2	81.5	1.3	20
						46	81.5	83.2	1.7	10/30
						47	83.2	86.3	2.1	nil
117.5	121.3	mafic pillow flows	f.g., green, epidote along rims, occas calcite veinlets, occas section of diss pyrite grains and cubes			48	86.3	89.3	3.0	10
						49	89.3	92.4	3.1	nil
						50	97.8	100.1	2.3	nil
121.3	128.9	mafic tuff	f.g., green, irregular calcite veinlets, faulted slightly carbonatized			37	68.3	69.9	1.6	40/30
128.9	141.1	mafic pillow flows altered	f.g., grey, calcite veinlets, irregular, calcite filling fractures, occasional section of diss po, py							
141.1	153.3	mafic tuff and altered pill flows	f.g., beige brown, highly carbonatized and some silicification, scattered narrow irregular calcite veinlets filling fractures							

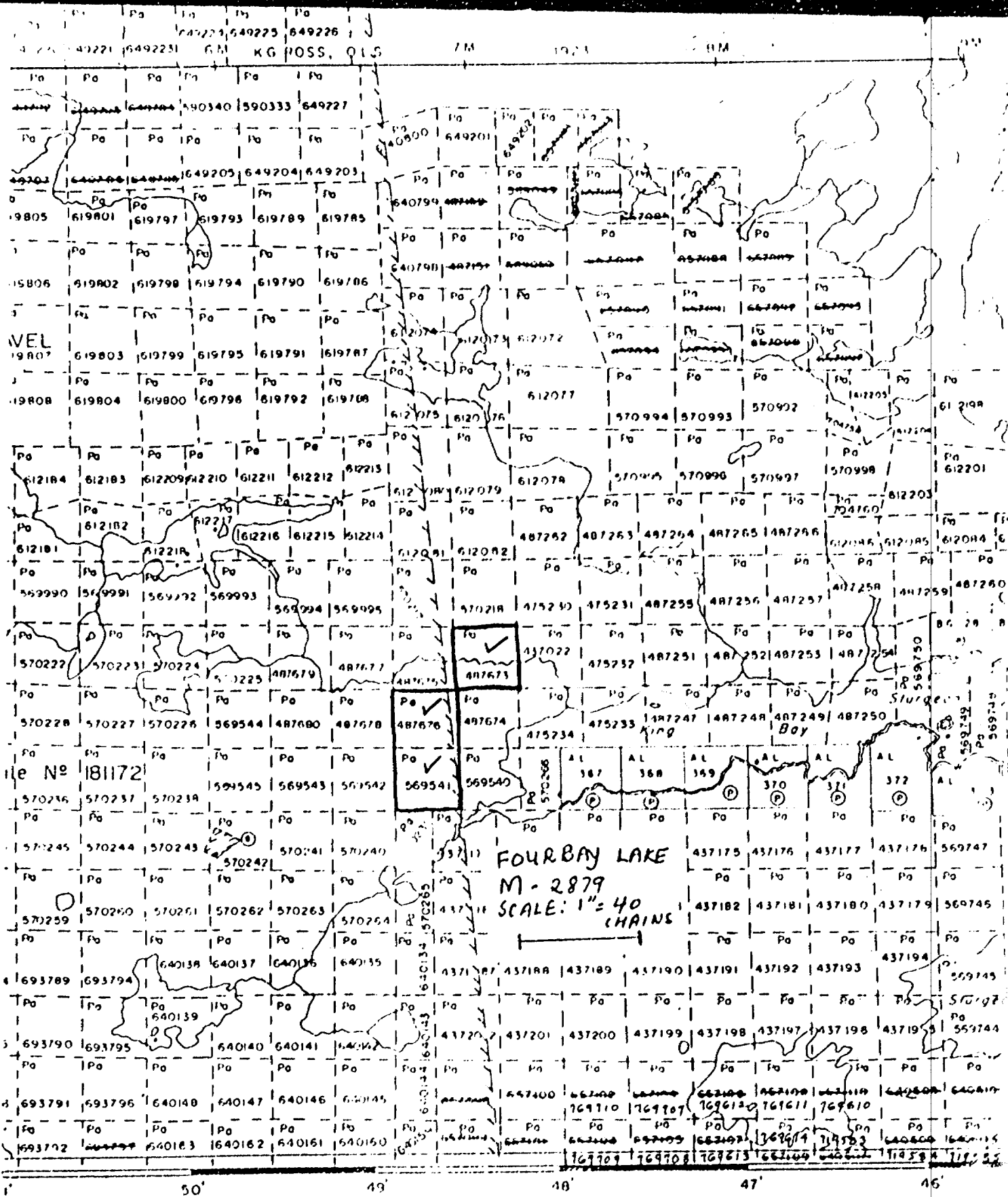
Diamond Drilling Log

Drilling Company Kerora Diamond Drilling Limited		Collar Elevation	Bearing of hole for true North	Total Footage	Dip of Hole at Collar	Location of hole in relation to a fixed point on the claim.	Map Reference No.	Claim No.
Date Hole Started	Date Completed	Date Logged	Logged by		Feet		Location (Twp, Lot, Con. or Lat. and Long.)	
Exploration Co., Owner or Optionee Steeep Rock Resources Inc		Date Submitted	Submitted by (Signature)		Feet			
				Feet	Property Name			

Footage		Rock Type	Description <small>Color, grain size, texture, minerals, alteration, etc.</small>	Pillar Feet Analog	Core Section Footage	Your Sample No.	Sample Footage		Sample Length	Au	Assays
From	To						From	To			
171.6	187.1	continued	fractures filled with white grey qtz and calcite with sparse po, cp grains; chloritic inclusions in white qtz calc vein 179.3 - 175.0			44873	165.1	166.4	1.3	30	
			176.8 - 187.5 narrow sections of ankerite-calcite zones 2.5 to 10 cm, scattered sections of seams and blebs of py, po, cp, ls, ore - all; calcite veining less prominent, narrow irregular and faulted veinlets			74	166.4	166.7	0.3	90	
						75	166.7	168.0	1.3	10	
						76	168.5	169.0	0.5	10	
						77	169.0	170.5	1.5	nil	
						78	170.5	171.6	1.1	nil	
						79	171.6	173.5	1.9	nil	
187.1	196.6	Vafic pillowed flows, breccia	green, dk green, grey, moderate well carbonatized sections; occasional irregular calcite veinlets; scattered diss sul, py, po, cp ls;			80	173.5	174.3	0.8	nil	
						81	174.3	175.3	1.0	nil	
						82	175.3	177.7	2.4	10/nil	
						83	177.7	179.2	1.5	nil	
196.6	211.2	Vafic tuff with interbedded int tuff and lapilli tuff	green, fine - med gr, carbonatized, occas calcite veinlet, diss grains of py < ls			84	179.2	180.8	1.6	nil	
						85	180.8	182.3	1.5	"	
						86	182.3	183.8	1.5	"	
						87	183.8	185.3	1.5	"	
						88	185.3	186.8	1.5	"	
211.2	213.8	Int tuff grading to arkosic sandstone	Narrow arkosic sandstone at 213.6 to 213.8, bedded laminated greyish mud with po, cp, py 2-3% sul; green grey, f.g., carb, scattered py			89	186.8	188.4	1.6	"	
						90	186.4	189.9	1.5	"	
						91	189.9	191.4	1.5	"	
213.8	238.7	Vafic tuff, possibly pillowed flows	green, f.g., chloritic-sericitic massive and foliated fine diss cp, py throughout, carbonatized, occas calcite veinlet int - 5m irregular, intermittent dark green chloritic banded tuffs with py, cp 1 - 3cm wide with carbonate (calcite); there would also be pillowed ribs			92	191.4	192.9	1.5	"	
						93	192.9	194.5	1.6	"	
						94	194.5	196.0	1.5	"	
						95	203.3	204.8	1.5	"	
						96	204.8	206.3	1.5	"	
						97	206.3	207.9	1.6	"	
238.7	242.2	Int tuff	massive fine grain, greyish green			98	213.6	213.8	0.2	10	
242.2	251.0	Vafic tuff grading into int tuff	green, fine grain, massive and bedded			99	215.8	217.3	1.5	nil	
						44920	217.3	218.9	1.6	nil	

PATRICIA MINING DIV
RECEIVED
 MAY - 3 1984
 A.M. P.M.
 7:8,9,10,11,12, 1,2,3,4,5,6





Fourbay Lake G2543



Ministry of Natural Resources
Report of Work
Access. Lib

Fourbay Lake GSSS
#84-73

The Mining Act

For (i.e. technical work use form no. 1362 "Report of Work (Geological, Geophysical, Geochemical and Expenditures)";

Name and Postal Address of Recorded Holder Steep Rock Resources Inc. 40 University Ave, Toronto Ontario M5J 2G5	Prospector's Licence No. A 18514
---	--

Total Work Days Cr. claimed 1180.4	Mining Claim			Mining Claim			Mining Claim		
	Prefix	Number	Work Days Cr.	Prefix	Number	Work Days Cr.	Prefix	Number	Work Days Cr.
For Performance of the following work. (Check one only) <input type="checkbox"/> Manual Work <input type="checkbox"/> Shaft Sinking Drifting or other Lateral Work. <input type="checkbox"/> Compressed Air, other Power driven or mechanical equip. <input type="checkbox"/> Power Stripping <input checked="" type="checkbox"/> Diamond or other Core drilling <input type="checkbox"/> Land Survey	Pa	487673	80	Pa	569540	80			
		487674	80		569541	140			
		487675	80		569542	80			
		487676	80		569543	80			
		487677	80		569544	80			
		487678	80		569545	80.4			
		487679	80						
	487680	80							

All the work was performed on Mining Claim(s): Pa 487673, Pa 487676, Pa 569541.

Required Information eg: type of equipment, Names, Addresses, etc. (See Table Below)

Kenora Diamond Drilling Ltd
Box 661
Kenora, Ontario, P9N 3X6

ONTARIO GEOLOGICAL SURVEY
ASSESSMENT FILES
RESEARCH OFFICE

AUG 27 1984

RECEIVED

Hole No	Az.	Dip	Depth	Date Drilled
KB-13-83	180°	-45°	108.8 m (356.9')	April 21-24/83
KB-24-83	210	-95	251.0 m (823.5')	Nov. 19-28/83

Recorded
Alanson

PATRICIA MINING DIV.
RECEIVED
MAY - 2 1984
A.M. 7 8 9 10 11 12 1 2 3 4 5 6 P.M.

Pa. 487673

Date of Report May 1 1984	Recorded Holder or Agent (Signature) <i>R.A. Bernatchez P. Eng.</i>
-------------------------------------	--

Certification Verifying Report of Work

I hereby certify that I have a personal and intimate knowledge of the facts set forth in the Report of Work annexed hereto, having performed the work or witnessed same during and/or after its completion and the annexed report is true.

Name and Postal Address of Person Certifying
R. A. Bernatchez, P. Eng. Steep Rock Resources Inc.
Attikokan, Ontario, P0T 1C0

Date Certified
May 1 1984

Certified by (Signature)
R.A. Bernatchez

Table of Information/Attachments Required by the Mining Recorder

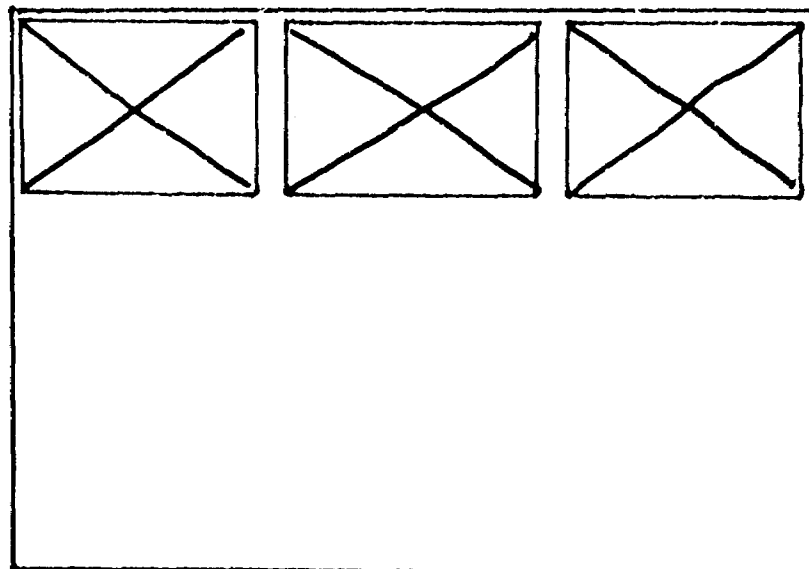
Type of Work	Specific information per type	Other information (Common to 2 or more types)	Attachments
Manual Work	Nil	Names and addresses of men who performed manual work/operated equipment, together with dates and hours of employment.	Work Sketch: these are required to show the location and extent of work in relation to the nearest claim post.
Shaft Sinking, Drifting or other Lateral Work			
Compressed air, other power driven or mechanical equip.	Type of equipment	Names and addresses of owner or operator together with dates when drilling/stripping done.	Work Sketch (as above) in duplicate
Power Stripping	Type of equipment and amount expended. Note: Proof of actual cost must be submitted within 30 days of recording.		
Diamond or other core drilling	Signed core log showing: footage, diameter of core, number and angles of holes.	Nil	Nil
Land Survey	Name and address of Ontario land surveyor.		

SEE ACCOMPANYING
MAP(S) IDENTIFIED AS

52J/02 SW-0021 #1-3

LOCATED IN THE MAP
CHANNEL IN THE
FOLLOWING SEQUENCE

(X)

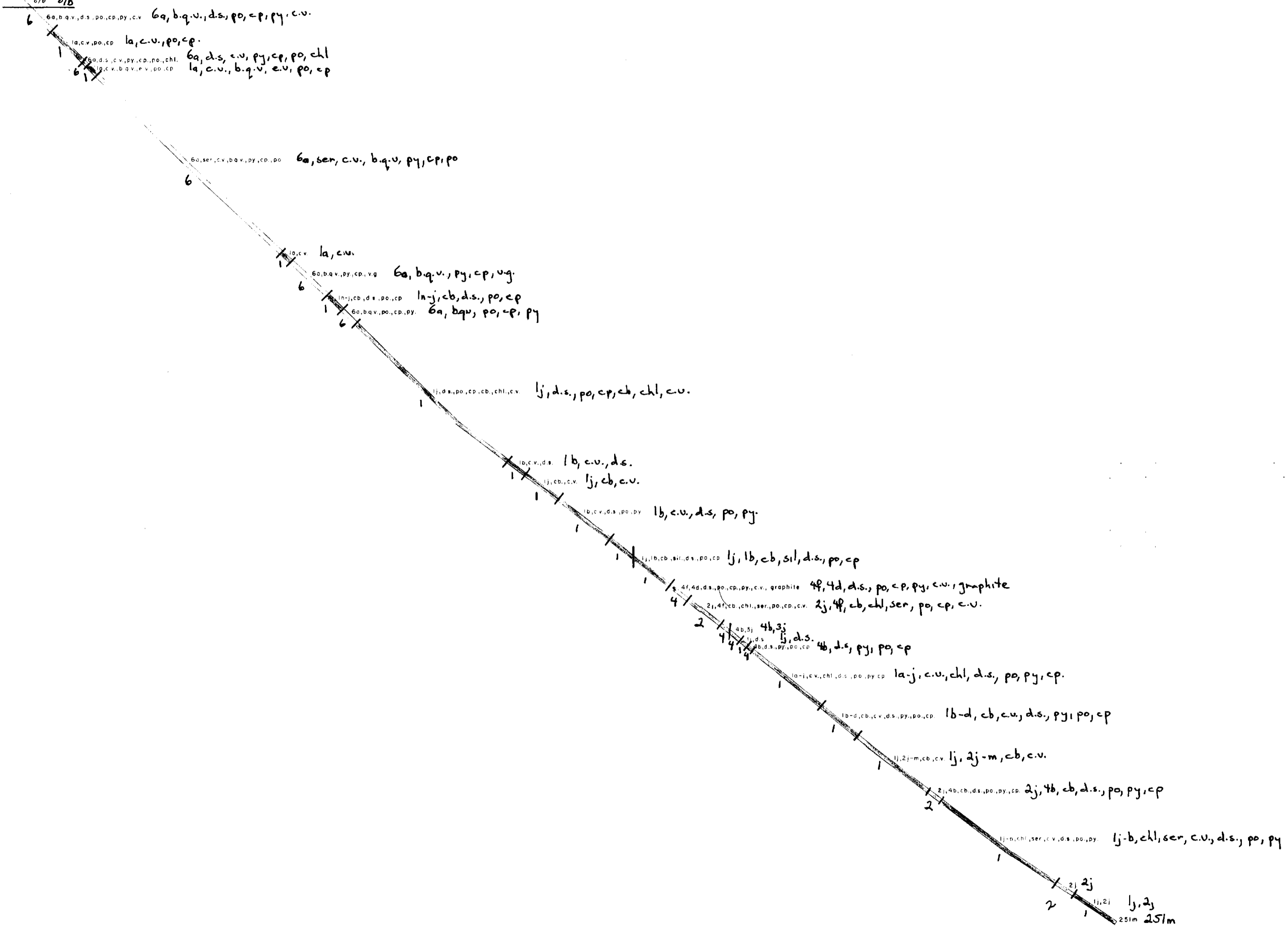


4+00W-2+505
AZ 210°

4+50W-3+375

5+00W-4+235

KB 29 83
a/b



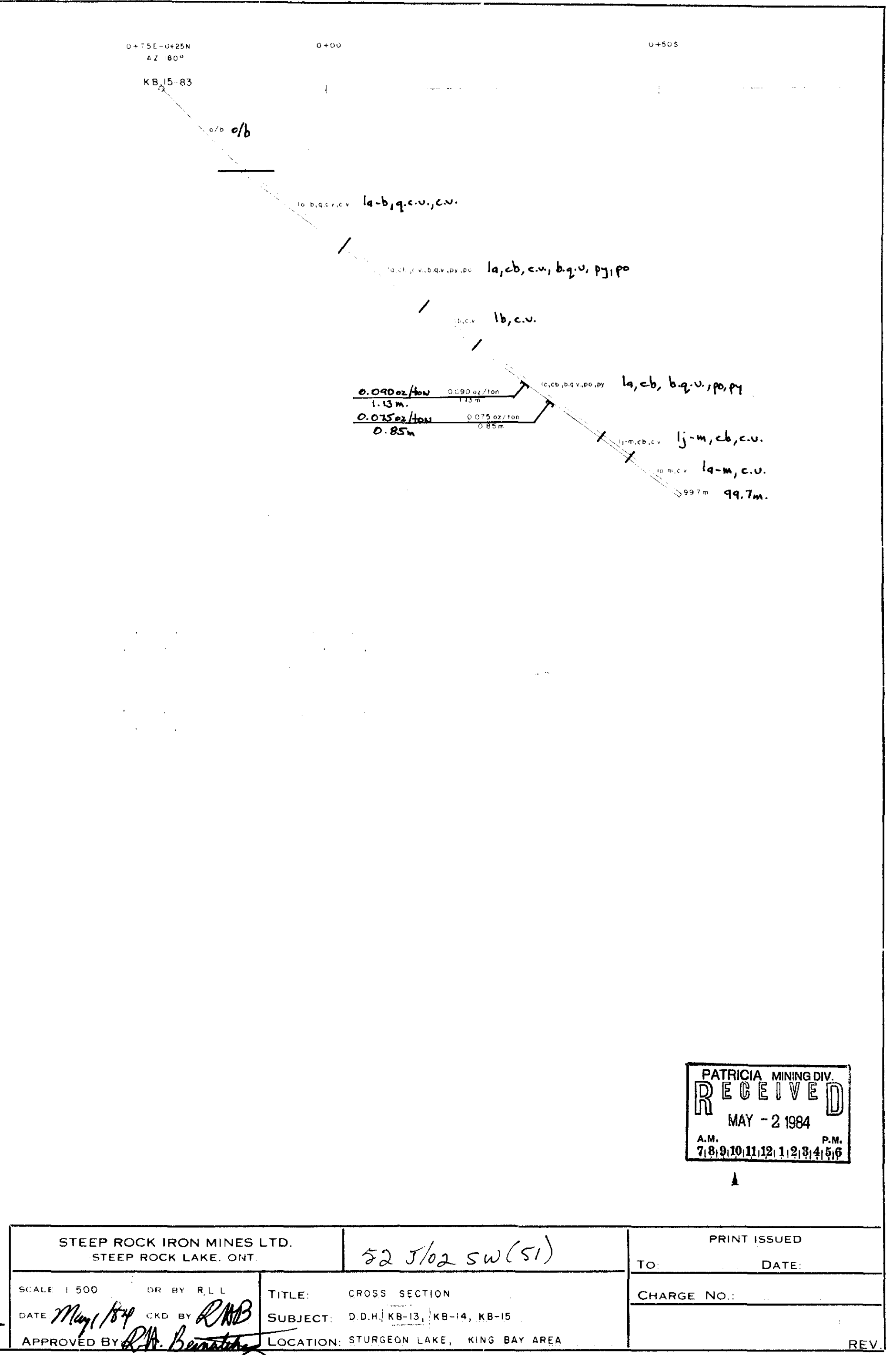
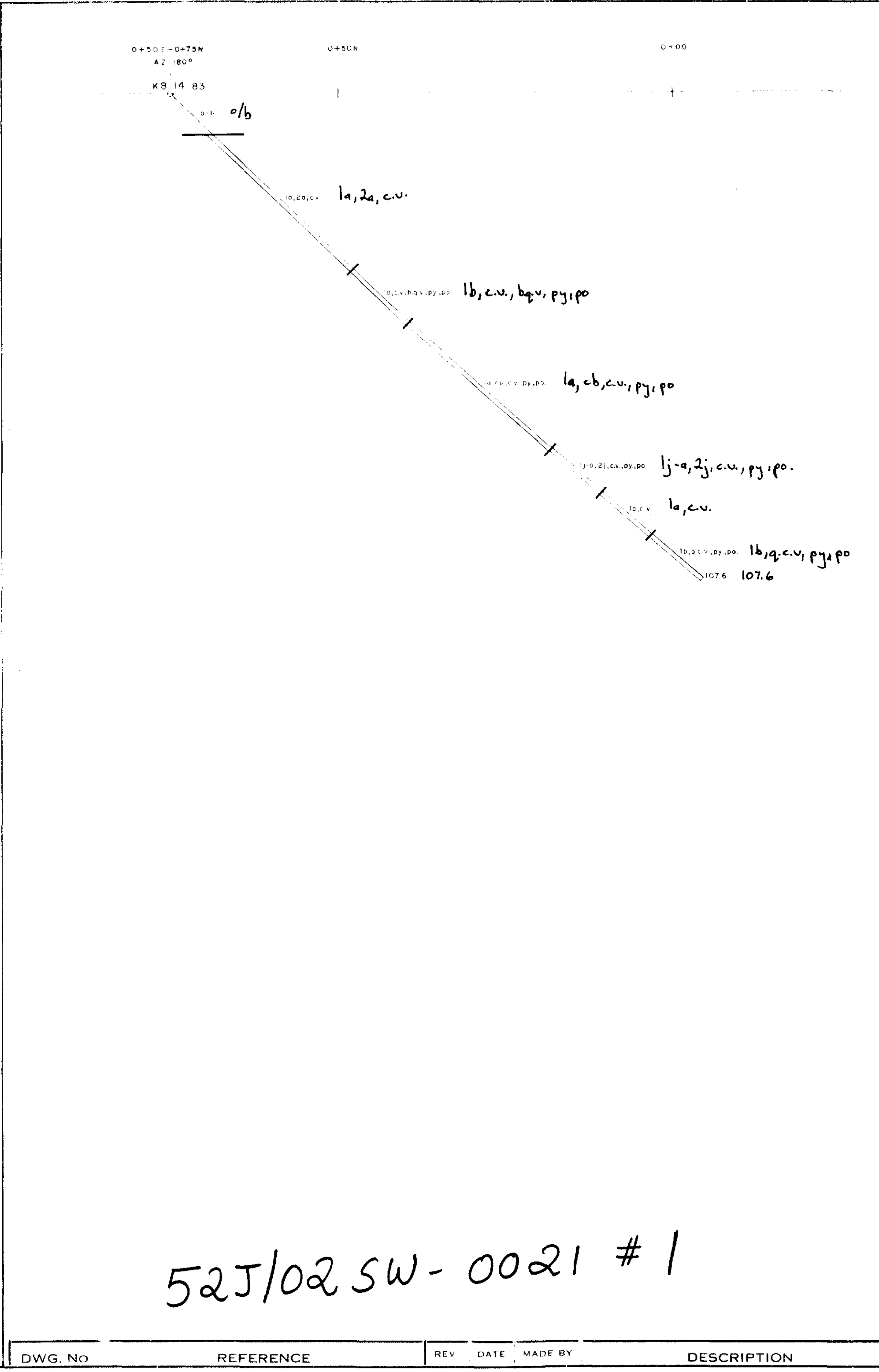
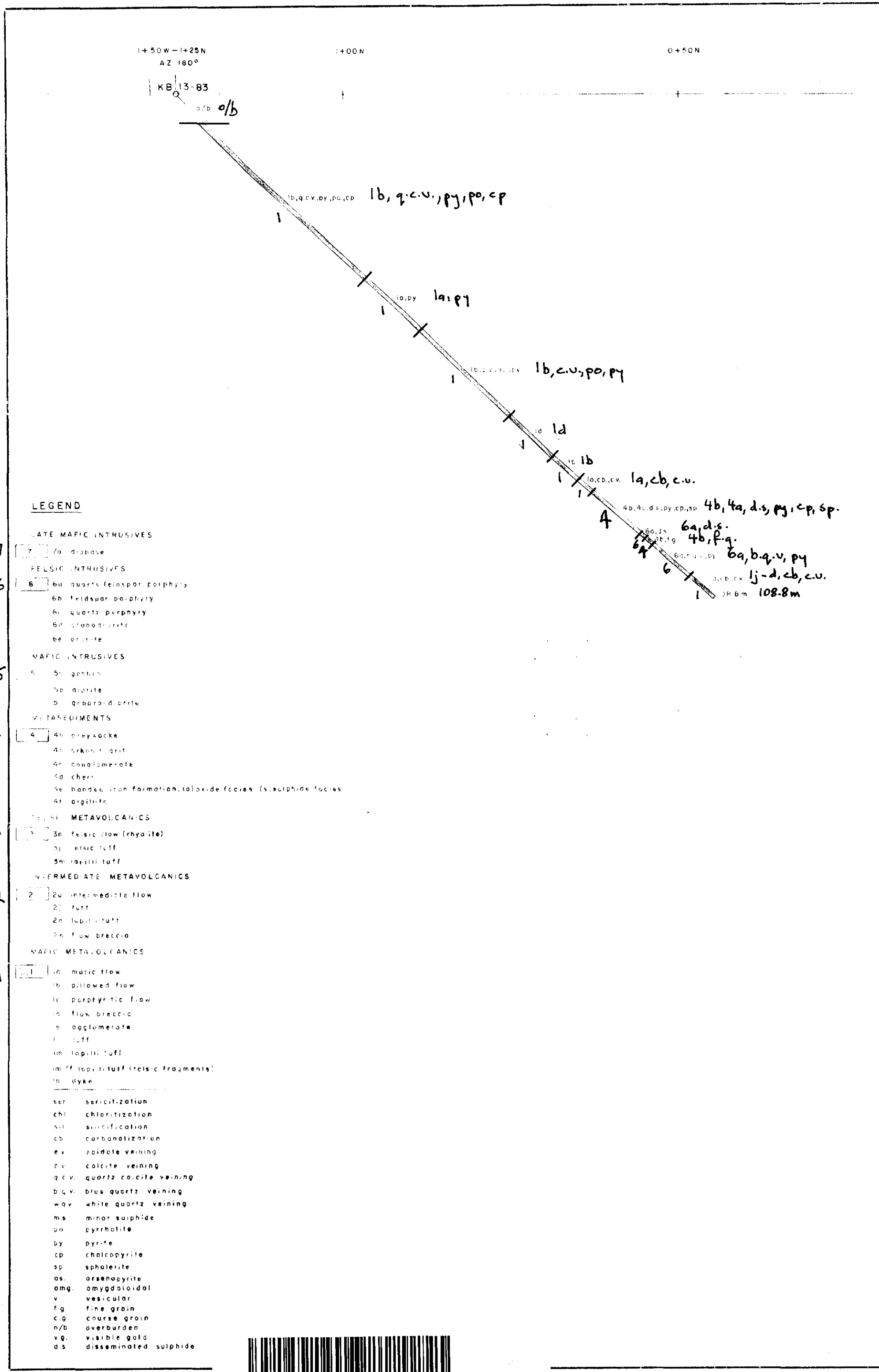
- LEGEND**
- LATE MAFIC INTRUSIVES**
 - 7 7a diabase
 - FELSIC INTRUSIVES**
 - 6 6a quartz feldspar porphyry
 - 6b feldspar porphyry
 - 6c quartz porphyry
 - 6d granodiorite
 - 6e granite
 - MAFIC INTRUSIVES**
 - 5 5a gabbro
 - 5b diorite
 - 5c gabbro-diorite
 - METASEDIMENTS**
 - 4 4a greywacke
 - 4b arkosic grit
 - 4c conglomerate
 - 4d chert
 - 4e banded iron formation, (o) oxide facies, (s) sulphide facies
 - 4f argillite
 - FELSIC METAVOLCANICS**
 - 3 3a felsic flow (rhyolite)
 - 3j felsic tuff
 - 3m lapilli tuff
 - INTERMEDIATE METAVOLCANICS**
 - 2 2a intermediate flow
 - 2j tuff
 - 2m lapilli tuff
 - 2n flow breccia
 - MAFIC METAVOLCANICS**
 - 1 1a mafic flow
 - 1b pillowed flow
 - 1c porphyritic flow
 - 1d flow breccia
 - 1e agglomerate
 - 1j tuff
 - 1m lapilli tuff
 - 1m(f) lapilli tuff (felsic fragments)
 - 1n dyke
 - ser sericitization
 - chl chloritization
 - sil silicification
 - cb carbonatization
 - ev epidote veining
 - cv calcite veining
 - qcv quartz calcite veining
 - bqv blue quartz veining
 - wqv white quartz veining
 - ms minor sulphide
 - po pyrrhotite
 - py pyrite
 - cp chalcopyrite
 - sp sphalerite
 - as arsenopyrite
 - amg amygdales
 - v vesicular
 - fg fine grain
 - cg coarse grain
 - w/b overburden
 - vg visible gold
 - ds disseminated sulphide

52J/02 SW-0021 #2

PATRICIA MINING DIV.
RECEIVED
 MAY - 2 1984
 A.M. 7:8:9:10:11:12: P.M. 1:2:3:4:5:6



DWG. NO		REFERENCE		REV	DATE	MADE BY	DESCRIPTION	STEEP ROCK IRON MINES LTD. STEEP ROCK LAKE, ONT.		52 J/02 SW(51)		PRINT ISSUED	
DATE		APPROVED BY:		SCALE: 1:500		DR BY: R.L.L.		TITLE: CROSS SECTION		TO: DATE		CHARGE NO.:	
DATE		APPROVED BY:		DATE		CKD BY:		SUBJECT: D.D.H. KB-29		LOCATION: STURGEON LAKE, KING BAY AREA		REV	



PATRICIA MINING DIV.
RECEIVED
 MAY - 2 1984
 A.M. P.M.
 7 8 9 10 11 12 1 2 3 4 5 6

STEEP ROCK IRON MINES LTD. STEEP ROCK LAKE, ONT.		52 J/02 SW(51)		PRINT ISSUED	
SCALE 1:500		DR BY R.L.L.		TO: DATE:	
DATE May 1984		CKD BY RMB		CHARGE NO.:	
APPROVED BY [Signature]		TITLE: CROSS SECTION		SUBJECT: D.D.H. KB-13, KB-14, KB-15	
DWG. No		REFERENCE		LOCATION: STURGEON LAKE, KING BAY AREA	
REV		DATE		MADE BY	
DESCRIPTION		REV.			

