

52J02SW0043 52J02SW0014A1 FOURBAY LAKE

010

Diamond Drilling

Area Fourbay Lake

Report NO 31

Work performed by: Steep Rock Resources Inc.

Claim NO	Hole NO	Footage	Date	Note
PA 570264 350240	KB-27-03	028	Nov/03	(1)
TOTAL	<u>1 DH</u>	<u>828 FT</u>		

Notes: (1) #160-04



Ontario

Ministry of Natural Resources

Diamond Drilling Log

Fill in on every page Hole No KB-27-83 Page 1 of 1

Drilling Company: Kenora Diamond Drilling Limited; Collar Elevation: Surface; Bearing of hole from True North: Due North; Total meters: 252.4; Dip of Hole at Collar: 45°; Date Hole Started: Nov 1, 1983; Date Completed: Nov 5, 1983; Date Logged: Nov 18/83; Logged by: R.A. Bernatchez; Exploration Co., Owner or Optionee: Armstrong-Best Property, leased to Steep Rock Resources Inc; Date Submitted: Oct 26/84; Submitted by (Signature):; Location of hole in relation to a fixed point on the claim:; Map Reference No: M 2879; Claim No: 570264; Location (Twp, Lot, Con or Lat and Long): N.T.S. 52-J-2 Line 8+18W; Lat 50° 01' 13+00S; Long 90° 48.8'; Property Name: King Bay Property, Sturgeon

Table with columns: Footage (From, To), Rock Type, Description, Dip of Hole at Collar, Core Size, Sample No., Sample Footage (From, To), Sample Length, Au, As, S, Pb. Rows include overburden, Andesite-diorite, and Diorite.

DUPLICATE COPY POOR QUALITY ORIGINAL TO FOLLOW

Diamond
Drilling
Log

Drilling Company Kenora Diamond Drilling Limited	Collar Elevation Surface	Bearing of hole from true North Due North	Total METERS 252.4	Dip of Hole at Core 1 45.0	Location of hole in relation to a fixed point on the claim	Map Reference No. M 2879	Claim No. 570264
Date Hole Started Nov 1, 1983	Date Completed Nov 5, 1983	Date Logged Nov 19/83	Logged by R. A. Bernatchez	30.5 38.5		Location (Twp., Lot, Con. or Lat. and Long.) N.T.S. 52-J-2 Line 8+18W Lat 50° 01' 13+00S Long 90° 48.8'	Property Name King Bay Property, Sturgeon
Exploration Co., Owner or Optionee Armstrong-Best Property, leased to Steep Rock Resources Inc		Date Submitted Oct 26/84	Submitted by (Signature) <i>R. A. Bernatchez</i>	61.0 37.0			
				91.5 35.5			
				121.9 33.0			

Footage		Rock Type	Description <small>Colour, grain size, texture, minerals, alteration, etc.</small>	Plane Features Angle	Core Section Footage	Your Sample No.	Sample Footage		Sample Length	Au ppb	Assays	Date
From	To						From	To				
0	3.7 m	overburden				44583	14.0	15.5	1.5	nil		
3.7	15.4	Andesite - diorite	f.g. to med grain green slightly foliated about 45° to core, massive appearance, some diss py, cp well carbonatized chloritic, occ calcite veins some red gr sections mottled or dark green spotted sections			64	15.5	17.1	1.6	nil		
						65	17.1	18.6	1.5	nil		
						66	18.6	20.1	1.5	nil		
						67	20.1	21.6	1.5	10		
						68	21.6	23.2	1.6	nil		
						69	23.2	24.7	1.5	"		
15.4	71.9	andesite pillowed & massive	light green grey pillowed andesite, highly carbonatized with numerous calcite veins, mix with py, cp diss grains of py, po, cp in pillows; also andesite altered to chlorite schist some sections altered to sericite-talc schist (26.5 m) 0.24 m ground core (between 26.2 - 29.3) getting increasingly fractured and brecciated 32.3 to 44.5m, some massive flows 38.1 - 43.6, 46.6 - 57.2, less brecciation and calcite veining from 44.5 - 49.1r qtz-calcite veins thicker from 49.1 - 58.0, 30-40 to core with po, cp, epidote; minor sections of hyaloclastite tite or flow breccia from 62.5 - 70.4, frequent seams of cp, po, 1-2% sulph			70	24.7	26.2	1.5	"		
						71	26.2	27.7	1.5	"		
						72	27.7	29.3	1.6	"		
						73	29.3	30.8	1.5	"		
						74	30.8	32.3	1.5	"		
						75	32.3	33.8	1.5	"		
						76	33.8	35.4	1.6	"		
						77	35.4	36.9	1.5	"		
						78	36.9	38.4	1.5	"		
						79	38.4	39.9	1.5	"		
						80	39.9	41.5	1.6	"		
						81	41.5	43.0	1.5	"		
						82	43.0	44.5	1.5	"		
71.9	111.9	diorite massive and/or flow	green, med to fine grain, mottled texture of dark green amphiboles, fractured and veined, fracture contains cp, po, py; qtz calcite veins with weak po, cp, min qtz white-grey 45° to core			83	44.5	46.0	1.5	"		
						84	46.0	47.6	1.6	"		
						85	47.6	49.1	1.5	"		
						86	49.1	50.6	1.5	50/130/70	0.003	
						87	50.6	51.2	0.6	nil		
						88	51.2	52.1	0.9	"		
						89	52.1	53.6	1.5	"		
						90	53.6	55.0	1.4	"		
						91	55.0	55.3	0.3	"		
						92	55.3	56.7	1.4	"		
						93	56.7	58.2	1.5	"		
						94	58.2	59.7	1.5	"		
						95	59.7	61.3	1.6	20		

PATRICIA MINING DIV

 OCT 26 1984
 AMT. REC. 11:28:15



Natural Resources

Diamond Drilling Log

File No. KB-27-93 Page No. 2 of 4

Drilling Company Kenora Diamond Drilling Ltd		Collar Elevation	Heading of hole from true North	Total Footage	Dip of Hole at 152.4 m 32.5	Location of hole in relation to a fixed point on the claim.	Map Reference No.	Claim No. 570264
Date Hole Started	Date Completed	Date Logged	Logged by	189.9 m 29.5	213.4 m 29.5		Location (Twp, Lot, Con or Lat. and Long.)	
Exploration Co., Owner or Optionee Steep Rock Resources Inc		Date Submitted	Submitted by (Signature)	243.8 m 29.0				
							Property Name King Bay Property	

Footage		Rock Type	Description Colour, grain size, texture, minerals, alteration, etc.	Planar Feature Angle*	Core Section Footage*	Your Sample No.	Sample Footage		Sample Length	Assays†	
From	To						From	To		Ag	Assays†
111.9	121.2	Mafic tuff	green, fine gr, foliated (banded) abundant carbonate seams parallel to foliation, diss grains of cp, po, py? <1%, visible fault at 118.1; grey tuff with sulphides from 118.2, some white grey qtz veins with calcite from 120.4 to 121.2m			42595	61.3	62.8	1.5	nil	
						97	62.8	63.3	1.5	nil	
						93	64.3	65.9	1.5	nil	
						99	65.8	67.4	1.6	nil	
						44200	67.4	69.5	1.1	10	
						01	68.5	70.4	1.9	nil	
						02	70.4	71.9	1.5	nil	
121.2	146.8	Mafic vol basalt	fine to med grain downhole, green equigranular, occas q.c.v. 30-50° to core axis, some parallel to core, 135.0 to 135.5 minor cp, py <1%, cp in blebs, py in fracture 135.6 to 135.7 45° to core; 136.9-139.0 mafic tuff or sheared carbonate; q.c.v. 143.2-143.9, grey white qtz vein; 144.0-146.8 mafic tuff, carb q.c.v. minor cp, po, py <1%.			03	75.6	76.0	0.4	nil	
						04	78.2	79.7	1.0	10	
						05	81.1	81.6	0.5	10	
						06	84.4	84.9	0.5	nil	
						07	87.2	88.5	1.3	20/35	
						08	88.5	89.2	0.7	nil	
						09	89.2	89.6	0.4	nil	
						10	102.8	103.0	0.2	nil	
146.8	169.5	Massive mafic flow or diorite	med equigranular massive green occ q.c.v. min with cp, po; grey white qtz veins 10-20° to core axis and parallel to core, weakly min with cp, po			11	105.8	110.3	1.5	10	
						12	110.3	111.9	1.6	nil	
						13	111.9	113.4	1.5	nil	
						14	113.4	114.9	1.5	nil	
169.5	186.2	Mafic tuff and lapilli tuff may be flow breccia	dark green sheared or foliated tuffs; carbonated q.c.v. cp, po, py; some long fractures filled with calcite parallel to core. Most of tuff is chloritic, scattered diss grains of cp, po in tuff and in q.c.v. and calcite veins. Numerous calcite seams parallel to foliation some cross-cutting foliation.			15	114.9	116.4	1.5	nil	
						16	116.4	119.0	1.6	nil	
						17	119.0	119.5	1.5	60	
						18	119.5	120.6	1.1	150/130	0.005
						19	120.6	121.3	0.8	60	
						20	127.4	129.3	0.9	nil	
						21	129.3	129.8	1.5	nil	
186.2	191.8	Mafic vol massive flow	fine and coarse grained sections of green mafic vol; coarse section is dark green black hornblende crystals; No sharp contacts between fine and coarse grained sections; occas calcite veins at various angles to core; coarse grained hornblende sections more carbonatized around amphiboles; fine or section also carbonatized.			22	129.8	131.1	1.3	nil	
						23	131.1	131.3	0.2	nil	
						24	135.0	135.6	0.6	nil	
						25	135.6	137.0	1.4	nil	
						26	137.0	138.1	1.1	nil	
						27	138.1	139.0	1.1	nil	
						28	139.0	140.5	1.5	nil	

DUPLICATE COPY
POOR QUALITY ORIGINAL
TO FOLLOW



Ontario

Ministry of Natural Resources

Diamond Drilling Log

Fill in on every page

Hole No.	Page No.
KB-27-83	2 of 4
Claim No.	
570264	

Drilling Company Kenora Diamond Drilling Ltd		Collar Elevation	Beginning of hole from true North	Total Footage	Dip of Hole at	Location of hole in relation to a fixed point on the claim.	Map Reference No.	Location (Twp., Lot, Con. or Lat. and Long.)
Date Hole Started	Date Completed	Date Logged	Logged by	152.4 m	32.5			
Exploration Co., Owner or Optionee		Date Submitted	Submitted by (Signature)	189.9 m	29.5			
Steep Rock Resources Inc				213.4 m	29.5			
				243.8 m	29.0			Property Name King Bay Property

Footage		Rock Type	Description <small>Colour, grain size, texture, minerals, alteration, etc.</small>	Planar Feature Angle*	Core Specimen Footage*	Your Sample No.	Sample Footage		Sample Length	Au	Assays †
From	To						From	To			
111.9	121.2	Mafic tuff	green, fine gr, foliated (banded) abundant carbonate seams parallel to foliation, diss grains of cp, po, py? <1%, visible fault at 118.1; grey tuff with sulphides from 118.2, some white grey qtz veins with calcite from 120.4 to 121.2 m			44596	61.3	62.8	1.5	ppb	
						97	62.8	64.3	1.5	nil	
						98	64.3	65.8	1.5	nil	
						99	65.8	67.4	1.6	nil	
						44200	67.4	68.5	1.1	10	
						01	68.5	70.4	1.9	nil	
121.2	146.8	Mafic vol basalt	fine to med grain downhole, green equigranular, occas q.c.v. 30 - 50 to core axis, some parallel to core, some pyrite along fractures; white grey qtz vein at 135.0 to 135.5 minor cp, py <1/2%, cp in blebs, py in fracture 135.6 to 135.7 45 to core; 136.9 - 139.0 mafic tuff or sheared carbonate; q.c.v. 143.2 - 143.9, grey white qtz vein; 144.0 - 146.8 mafic tuff, carb q.c.v. minor cp, po, py <1/2%			02	70.4	71.9	1.5	nil	
						03	75.6	76.0	0.4	nil	
						04	78.2	79.2	1.0	10	
						05	81.1	81.6	0.5	10	
						06	84.4	84.9	0.5	nil	
						07	87.2	88.5	1.3	20/35	
						08	88.5	89.2	0.7	nil	
						09	89.2	89.6	0.4	nil	
						10	102.8	103.0	0.2	nil	
146.8	169.5	Massive mafic flow or diorite	red equigranular massive green q.c.v. mñ with cp, po; grey white qtz veins 10 - 20 to core axis and parallel to core, weakly mñ with cp, po			11	109.8	110.3	1.5	10	
						12	110.3	111.9	1.6	nil	
						13	111.9	113.4	1.5	nil	
						14	113.4	114.9	1.5	nil	
169.5	186.2	Mafic tuff and lapilli tuff may be flow breccia	dark green sheared or foliated tuffs; carbonated q.c.v. cp, po, py; some long fractures filled with calcite parallel to core. Most of tuff is chloritic, scattered diss grains of cp, po in tuff and in q.c.v. and calcite veins. Numerous calcite seams parallel to foliation some cross cutting foliation			15	114.9	116.4	1.5	nil	
						16	116.4	118.0	1.6	nil	
						17	118.0	119.5	1.5	60	
						18	119.5	120.6	1.1	150/180	0.005
						19	120.6	121.3	0.8	60	
						20	127.4	128.3	0.9	nil	
						21	128.3	129.8	1.5	nil	
186.2	191.8	Mafic vol massive flow	fine and coarse grained sections of green mafic vol; coarse section is dark green black hornblende crystals; No sharp contacts between fine and coarse grained sections; occas calcite veins at various angles to core; coarse grained hornblende sections more carbonatized around amphiboles; fine gr section also carbonatized			22	129.8	131.1	1.3	nil	
						23	131.1	131.3	0.2	nil	
						24	135.0	135.6	0.6	nil	
						25	135.6	137.0	1.4	nil	
						26	137.0	138.1	1.1	nil	
						27	138.1	139.0	1.1	nil	
						28	139.0	140.5	1.5	nil	



**Diamond
Drilling
Log**

Drilling Company Kenora Diamond Drilling Limited		Collar Elevation	Bearing of hole from true North	Total Footage	Dip of Hole at Collar	Location of hole in relation to a fixed point on the claim.	Map Reference No.	Claim No.	
Date Hole Started	Date Completed	Date Logged	Logged by		Fi		Location (Top, Lot, Con. or Lat. and Long.)		
Exploration Co., Owner or Optionee Steep Rock Resources Inc		Date Submitted	Submitted by (Signature)		Fi				
					Fi				
							Property Name King Bay Property		

Footage		Rock Type	Description Colour, grain size, texture, minerals, alteration, etc.	Pillar Footage Angle	Core Specimen Footage	Year Sample No.	Sample Footage		Sample Length	Au Assays †	
From	To						From	To		ppb	
191.8	197.1	Mafic vol massive flow	dark green to green; fine grain, occ fine narrow calcite veins with minor po, cp 41%			44229	140.5	140.7	0.2	nil	
						30	140.7	141.5	0.8	nil	
						31	141.5	141.6	0.1	nil	
197.1	202.6	Mafic vol flow massive horn-blendite	green, med grain, massive, equigranular, occasional q.c.v. with minor cp, po 41%, some calcite veining displaced; q.c.v. and c.v. at variable angles to core 50°, 35° and parallel (200.0 to 201.1m)			32	141.5	143.0	1.4	nil	
						33	143.0	144.0	1.0	10	
						34	144.0	145.2	1.2	10	
						35	145.2	145.9	1.6	10	
						36	145.8	147.8	1.0	10	
202.6	208.1	Mafic flow massive	green, fine grain, occ q.c.v., cp, po, c.v. with cp, po			37	147.8	147.7	0.9	10	
						38	147.7	150.3	1.6	10	
						39	134.5	135.1	0.6	10	
208.1	218.2	Mafic flow massive	green, coarse grain as above, occ q.c.v. cp, po			40	162.6	162.9	0.3	nil	
						41	163.8	164.3	0.5	nil	
						42	165.3	167.6	1.6	300	0.008
218.2	229.2	Mafic tuff	green-lt green fine gr, foliated, carb, sericite, q.c.v. minor cp, po; folding, foliation 10-20° to core axis			43	168.0	169.7	0.7	40	
						44	170.0	170.5	0.5	390/540	0.014
						45	171.9	173.4	1.5	130	0.004
229.2	252.4	Mafic vol massive flow	green, fine grain, chloritic occ q.c.v. up to 1.5 cm with minor cp, po slightly carbonatized q.c.v. at 247.5 (9.2cm)			46	173.4	175.0	1.6	60	
						47	175.0	176.5	1.5	10	
						48	176.5	178.0	1.5	nil	
						49	178.0	179.5	1.5	nil	
						44251	179.5	181.1	1.6	nil	
						"	181.1	182.6	1.5	nil	
						44252	182.6	184.1	1.5	nil	
						53	184.1	185.6	1.5	nil	
						54	185.6	187.1	1.5	nil	
						55	191.7	193.2	1.5	nil	
						56	195.4	196.4	1.0	nil	
						44257	196.4	197.1	0.7	nil	
						"	197.1	198.7	1.6		
						"	198.7	200.0	1.3		
						44260	200.2	201.2	1.2	nil	
						61	202.2	203.7	1.5	nil	
						62	203.7	205.2	1.5	30/4	

**DUPLICATE COPY
POOR QUALITY ORIGINAL
TO FOLLOW**



Ontario

Ministry of Natural Resources

Diamond Drilling Log

Fill in on every page

File No. KB-27-83 Page No. 3 of 4

Drilling Company Kenora Diamond Drilling Limited		Collar Elevation	Bearing of hole from true North	Total Footage	Dip of Hole at Collar	Location of hole in relation to a fixed point on the claim	Map Reference No.	Claim No.
Date Hole Started	Date Completed	Date Logged	Logged by		Fl.		Location (Twp., Lot, Con or Lat and Long)	
Exploration Co., Owner or Opt. price		Date Submitted	Submitted by (Signature)		Fl.			
Steep Rock Resources Inc					Fl.			Property Name King Bay Property

Footage		Rock Type	Description Color, grain size, texture, mineral alteration, etc.	Planar Feature Angle	Core Specimen Footage	Your Sample No.	Sample Footage		Sample Length	Au Assays †
From	To						From	To		
191.8	197.1	Mafic vol massive flow	dark green to green, fine grain, occ fine narrow calcite veins with minor po, cp <1%			44229	140.5	140.7	0.2	ppb
						30	140.7	141.5	0.8	nil
						31	141.5	141.6	0.1	nil
						32	141.6	143.0	1.4	nil
197.1	202.6	Mafic vol flow massive horn-blendite	green, med grain, massive, equigranular, occasional q.c.v. with minor cp, po <1%, some calcite veining displaced; q.c.v. and c.v. at variable angles to core 50°, 35° and parallel (200.0 to 201.1m)			33	143.0	144.0	1.0	10
						34	144.0	145.2	1.2	10
						35	145.2	145.8	1.6	10
						36	145.8	147.8	1.0	10
						37	147.8	148.7	0.9	10
202.6	208.1	Mafic flow massive	green, fine grain, occ q.c.v., cp, po, c.v. with cp, po			38	149.7	150.3	1.6	10
						39	134.5	135.1	0.6	10
						44240	162.6	162.9	0.3	nil
208.1	218.2	Mafic flow massive	green, coarse grain as above, occ q.c.v. cp, po			41	163.8	164.2	0.5	nil
						42	165.3	167.6	1.3	300 0.008
						43	168.0	169.7	0.7	40
218.2	229.2	Mafic tuff	green-lt green, fine gr, foliated, carb, sericite, q.c.v. minor cp, po; folding, foliation 10-20° to core axis			44	170.0	170.5	0.5	390/540 0.014
						45	171.9	173.4	1.5	130 0.004
						46	173.4	175.0	1.6	80
229.2	252.4	Mafic vol massive flow	green, fine grain, chloritic occ q.c.v. up to 1.5 cm with minor cp, po slightly carbonatized q.c.v. at 247.5 (9.2cm)			47	175.0	176.5	1.5	10
						48	176.5	178.0	1.5	nil
						49	178.0	179.5	1.5	nil
						44251	179.5	181.1	1.6	nil
						"	181.1	182.6	1.5	nil
						44252	182.6	184.1	1.5	nil
						53	184.1	185.6	1.5	nil
						54	185.6	187.1	1.5	nil
						55	191.7	193.2	1.5	nil
						56	195.4	196.4	1.0	nil
						44257	196.4	197.1	0.7	nil
						"	197.1	197.7	1.6	
						"	198.7	200.0	1.3	
						44260	200.2	201.2	1.2	nil
						61	202.2	203.7	1.5	nil
						62	203.7	205.2	1.5	30/40

PATRICIA MINING DIV.
RECEIVED
OCT 5 1964
A.M. P.M.
789 SWINZ 126/123



Ministry of
Natural
Resources

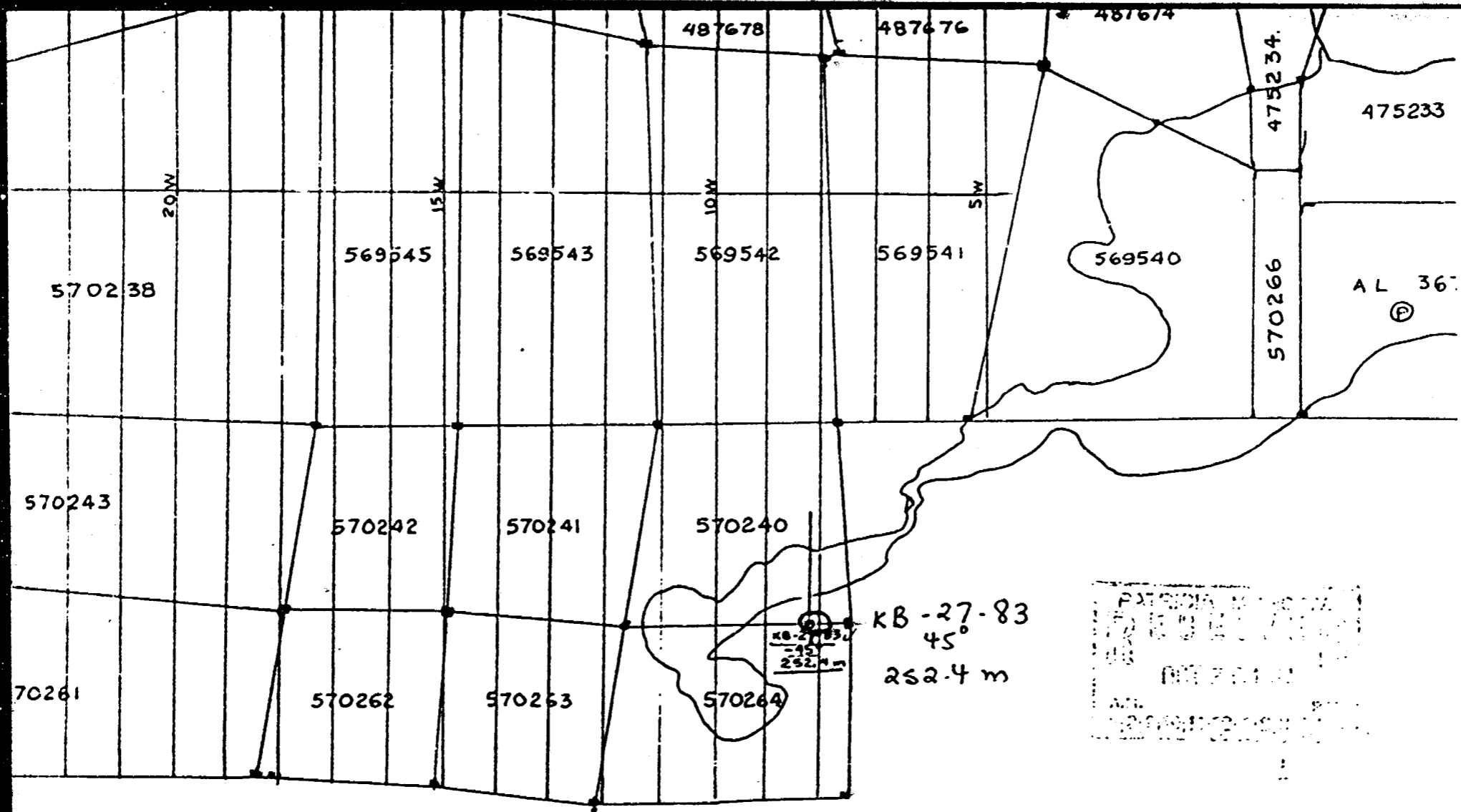
**Diamond
Drilling
Log**

Fill in on every page Hole No. KB-27-834 2/4 Page 2/4

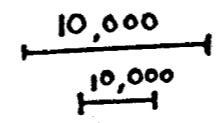
Drilling Company Kenora Diamond Drilling Ltd		Collar Elevation	Bearing of hole from true North	Total Footage	Dip of Hole at Collar	Location of hole in relation to a fixed point on the claim	Map Reference No.	Claim No.	
Date Hole Started	Date Completed	Date Logged	Logged by		Ft.		Location (Twp., Lot, Con. or Lat. and Long.)	Property Name King Bay Property, Sturgeon Lake	
Exploration Co., Owner or Optionee Steep Rock Resources Inc		Date Submitted	Submitted by (Signature)		Ft.				
					Ft.				

Footage		Rock Type	Description <small>Colour, grain size, texture, minerals, alteration, etc.</small>	Placer Feature Angle	Core Specimen Footage	Your Sample No.	Sample Footage		Sample Length	Au ppb	Assays f
From	To						From	To			
						63	205.2	205.8	1.6		
						44264	218.2	219.8	1.6	nil	
						65	219.8	221.3	1.5	nil	
						66	221.3	222.8	1.5	nil	
						67	222.8	224.3	1.5	nil	
						68	224.3	225.9	1.6	nil	
						69	225.9	227.4	1.5	10	
						70	227.4	228.9	1.5	10	
						71	236.5	238.0	1.5	10	
						72	238.0	239.6	1.6	10	
						44273	239.6	241.1	1.5	10	
						74	241.1	142.5	1.4	10	
						75	242.5	242.9	0.4	nil	
						76	247.4	247.5	0.1	nil	
						77	247.5	243.1	0.6	nil	
						78	249.1	249.9	1.8	nil	
						79	249.9	252.4	2.5	10	

PATRICIA MINING CO.
RECEIVED
 10/12/2012
 A.M. P.M.
 7/9/10, 11/2, 12/15/12



PATROLIA M...
 17 10 12 14 16 18 20 22 24 26 28 30 32 34 36 38 40 42 44 46 48 50 52 54 56 58 60 62 64 66 68 70 72 74 76 78 80 82 84 86 88 90 92 94 96 98 100
 100 200 300 400 500 600 700 800 900 1000
 1:10,000



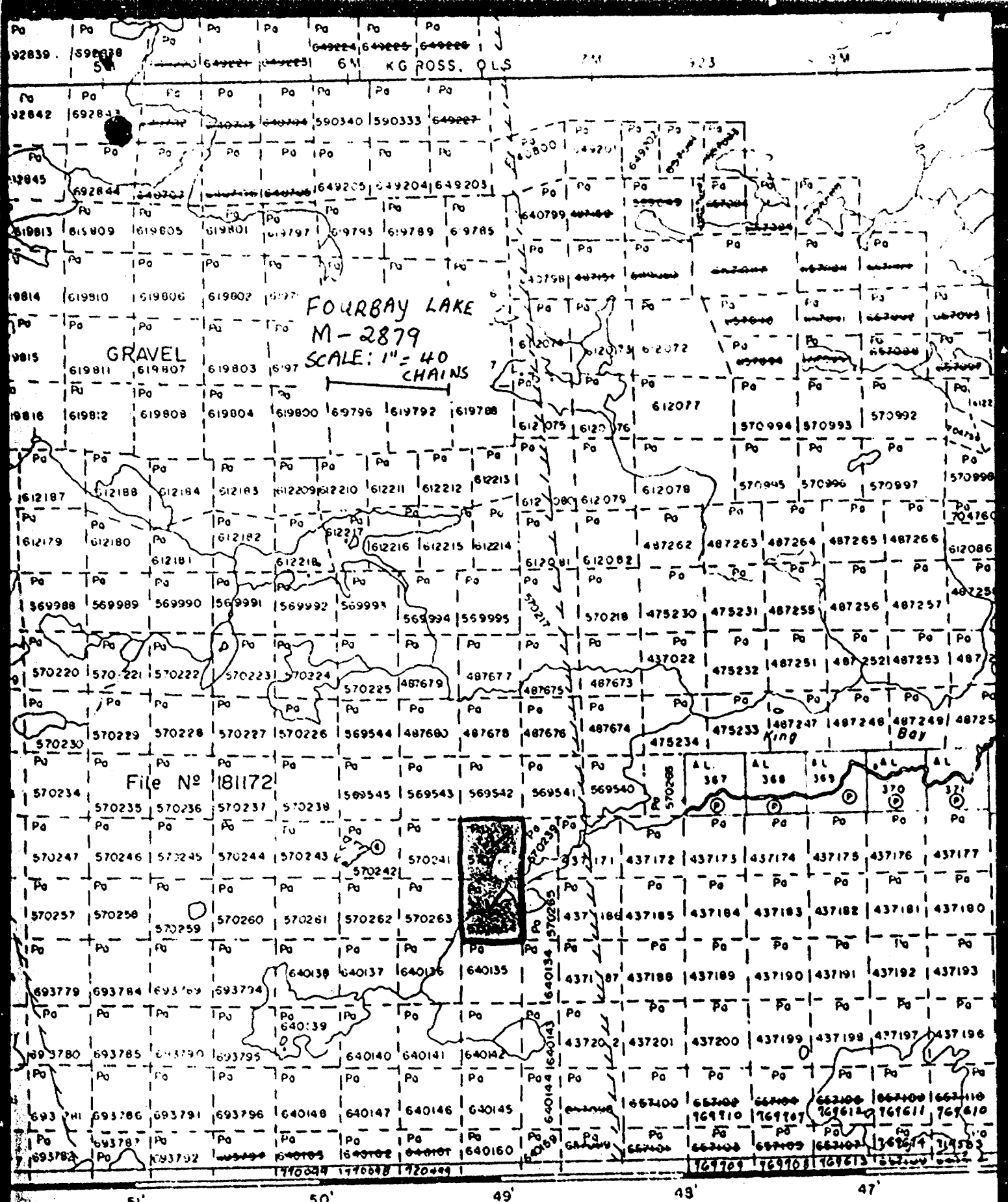
STEEP ROCK RESOURCES INC. KING BAY PROPERTY D.D.H. LOCATION FOR KB-27-83
SCALE: 1:10,000 DATE: OCTOBER 25, 1984.
BY : R.A. BERNATCHEZ, P. ENG.

CI. MAP Fourbay Lake(M-2879)



52J02SW0043 52J02SW0014A1 FOURBAY LAKE

900



2561

Fourbay Lake G2543



Ontario
Assess. Lib.

Report
of Work

Fourbay Lake G2543
#81-160

The Mining Act

For a list of the work done under the Mining Act, see Form 1302 "Report of Work (Geological, Geophysical, Geochemical and Expenditures)".

Name and Postal Address of Recorded Holder: **Steep Rock Resources Inc.**
 710-40 University Ave., Toronto, Ontario, M5J 2G5
 Prospector's Licence No: **A-18514**

Summary of Work Performance and Distribution of Credits

Total Work Days Cr. claimed 252.4m (828ft)	Mining Claim			Mining Claim			Mining Claim		
	Prefix	Number	Work Days Cr.	Prefix	Number	Work Days Cr.	Prefix	Number	Work Days Cr.
for Performance of the following work. (Check one only) <input type="checkbox"/> Manual Work <input type="checkbox"/> Shaft Sinking Drifting or other Lateral Work. <input type="checkbox"/> Compressed Air, other Power driven or mechanical equip. <input type="checkbox"/> Power Stripping <input checked="" type="checkbox"/> Diamond or other Core drilling <input type="checkbox"/> Land Survey	Pa	612081	44	Pa	612201	60			
		612082	60		612202	60			
		612083	60		612203	60			
		612084	60		612204	60			
		612085	60		612205	60			
		612086	60						
		612199	60						
	612200	60							

All the work was performed on Mining Claim(s): **Pa 570264 and Pa 570240**

Required Information eg: type of equipment, Names, Addresses, etc. (See Table Below)

Hole no.: **KB-27-83**, Nov. 1-5, 1983, Az: **360°**, Depth: **252.4 metres (828 feet)**
 Location: **LB+18W, 13+00S.**
 Core Size: **B.Q.**
 Drilled by **Kenora Diamond Drilling Ltd**
 Box 661
 Kenora Ontario P9N 3X6

Performed **828 days**
 Using **764 days**
 In Bank for **64 days**
 Future Use

Recorded
Ray A. Bernatchez
 Pa. 612072

Stamp: PATRICIA BERNATCHEZ, 1210 UNIVERSITY AVE, TORONTO, ONT. M5J 2G5

Date of Report: **October 25/84** Recorded Holder or Agent (Signature): **RA Bernatchez P. Eng.**

Certification: Verifying Report of Work

I hereby certify that I have a personal and intimate knowledge of the facts set forth in the Report of Work annexed hereto, having performed the work or witnessed same during and/or after its completion and the annexed report is true.

Name and Postal Address of Person Certifying: **Raymond A. Bernatchez Steep Rock Resources Inc.**
Atikokan Ontario P0T 1C0
 Date Certified: **October 25/84** Certified by (Signature): **R.A. Bernatchez, P. Eng.**

Table of Information/Attachments Required by the Mining Act, 1963

Type of Work	Specific information per type	Other information (Common to 2 or more types)	Attachments
Manual Work	Nil	Names and addresses of men who performed manual work, operated equipment, together with dates and hours of employment	Work Sketch: these are required to show the location and extent of work in relation to the nearest claim block
Shaft Sinking Drifting or other Lateral Work	Nil		
Compressed air, other power driven or mechanical equip.	Type of equipment	Names and addresses of owner or operator together with dates when drilling/striping work.	Work Sketch (as above) in duplicate
Power Stripping	Type of equipment and amount expended Note: Proof of actual cost must be submitted within 30 days of recording		
Diamond or other core drilling	Signed core log showing, footage, diameter of core, number and angles of holes.	Nil	Nil
Land Survey	Name and address of Ontario land surveyor.		