

52J/02SW-00 48

LOAD: 1/2 mm

Hole Number: R-85-1
Line: 4+05 W
Station: 0+50 meters South
Collar Angle: -45 degrees
Direction of Hole: South Down Line
Final Depth: 301 feet
Claim Location: 612180
Mining District: Kenora and Thunder Bay
Mining Division: Patricia
Area: Fourbay Lake Area, Ontario
Claim Map: M 2879
N.T.S. 52-J-2
Drilled By: Modisette Diamond Drilling for
Riverton Resources Corp.
Core Size: NQ
Casing: Left in Hole
Drilling Started: January 20, 1985
Drilling Finished: January 21, 1985
Core Stored: Sioux Lookout, Ontario -- Core Library
Hole Logged By: L.J. Nelson

Drill Log: Hole R-85-1 (footage in feet)

<u>Footage</u>	<u>Rock Description</u>
0-7	Overburden, sand & gravel
7-120	Andesite, dark green aphanitic
120-142	Mineralized carbonate altered dacite - dendritic white quartz veins - minor Py, Po (1-2%)
142-301	Basalt, medium green colour Mineralization 161-162 15-20% Po 181-192 1/4 inch Quartz veining with minor Py, Po
301	End of Hole

CTA 12/22/62

Logged By: L.J. Nelson

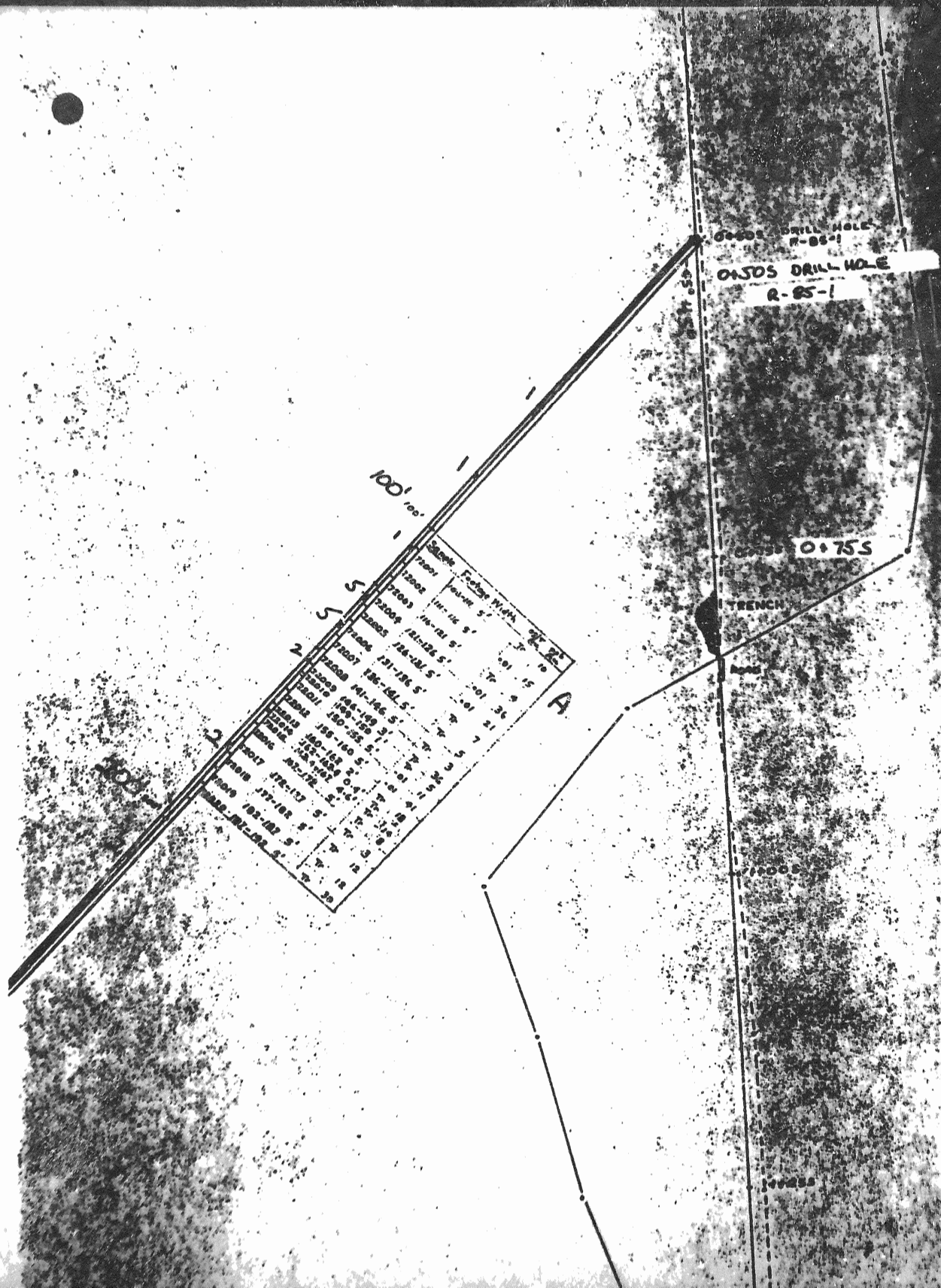
ASSAYS

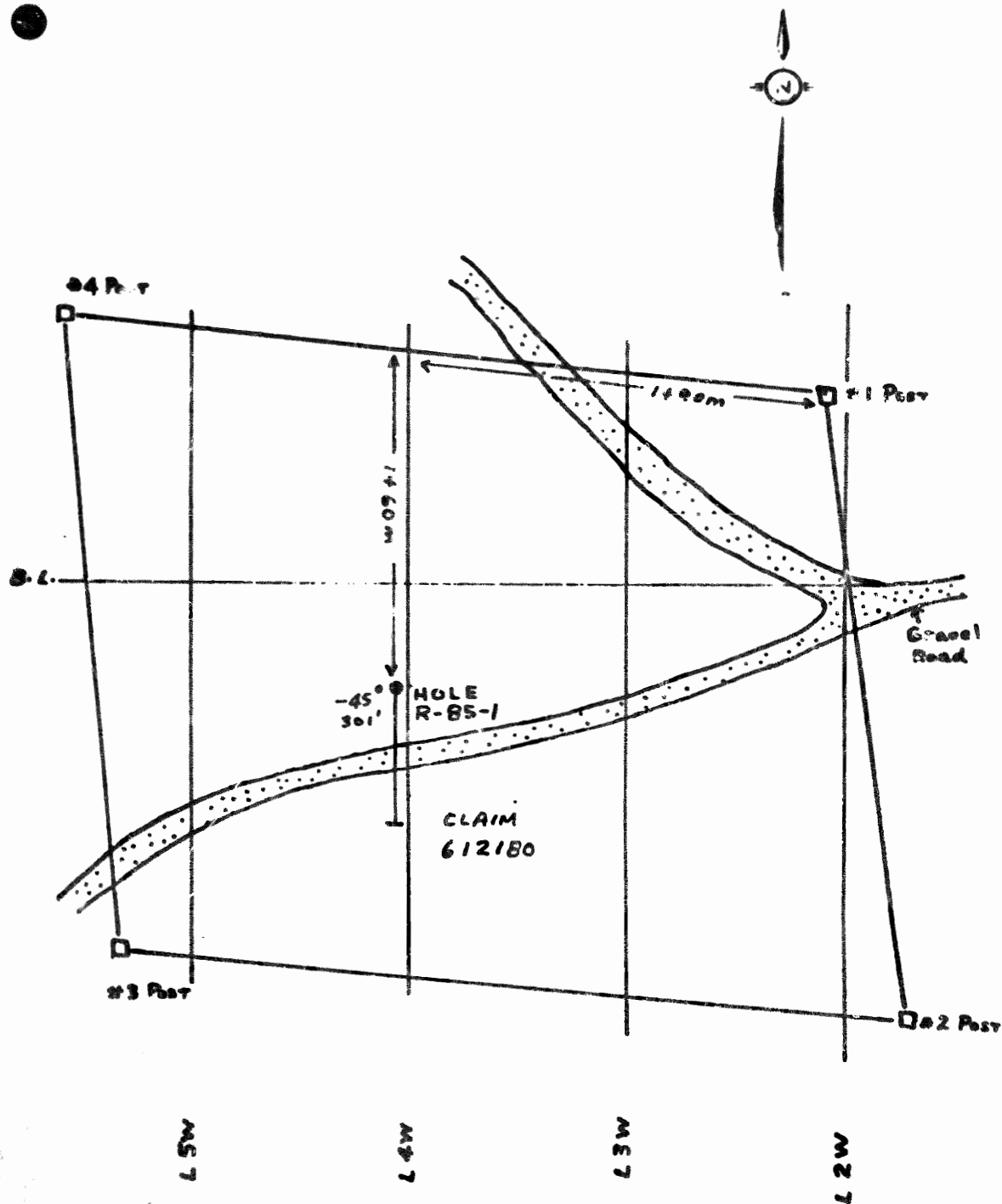
Hole Number: R-85-1

<u>Sample #</u>	<u>Footages</u> <u>from to</u>	<u>oz/Au/T</u>	<u>ppb Au</u>	<u>ppm Cu</u>	<u>ppm Zn</u>	<u>ppm Ag</u>
72001	106 111	Tr	10			
72002	111 116	.01	15			
72003	116 121	Tr	4			
72004	121 126	.01	36			
72005	126 131	.01	21			
72006	131 136	Tr	7			
72007	136 141	Tr	5			
72008	141 146	Tr	3			
72009	146 149	Tr	36			
72010	149 150	Tr	5			
72011	150 155	.01	11			
72012	155 160	.01	41			
72013	160 162	Tr	18			
72014	162 162.4	Tr				
72015	162.4 167	Tr	14			
72016	167 172	Tr	8			
72017	172 177	Tr	3			
72018	177 182	Tr	12			
72019	182 187	Tr	12			
<u>72020</u>	<u>187 192</u>	<u>Tr</u>	<u>30</u>			

A.

SAMPLE	FOOTAGE	WIDTH	Oz/T	
			Au	Ag
72001	106-111	5'	Tr	10
72002	111-116	5'	.01	15
72003	116-121	5'	Tr	4
72004	121-126	5'	.01	36
72005	126-131	5'	.01	21
72006	131-136	5'	Tr	7
72007	136-141	5'	Tr	5
72008	141-146	5'	Tr	3
72009	146-149	3'	Tr	36
72010	149-150	1'	Tr	5
72011	150-155	5'	.01	11
72012	155-160	5'	.01	41
72013	160-162	2'	Tr	18
72014	162-162.4	0.4'	Tr	-
72015	162.4-167	4.6'	Tr	14
72016	167-172	5'	Tr	8
72017	172-177	5'	Tr	3
72018	177-182	5'	Tr	12
72019	182-187	5'	Tr	12
72020	187-192	5'	Tr	30





CLAIM MAP M2979
 LOCATION DRILL HOLE R-85-1
 RIVERTON RESOURCES CORP.



Hole Number: R-85-2
Line: 3+00 W
Station: 0+25 meters South
Collar Angle: -45 degrees
Direction of Hole: South Down Line
Final Depth: 303 feet
Claim Location: 612180
Mining District: Kenora and Thunder Bay
Mining Division: Patricia
Area: Fourbay Lake Area, Ontario
Claim Map: M 2879
N.T.S.: 52-J-2
Drilled By: Mesurette Diamond Drilling for
Riverton Resources Corp.
Core Size: NQ
Casing: Left in Hole
Drilling Started: January 22, 1985
Drilling Finished: January 24, 1985
Core Stored: Sioux Lookout, Ontario - Core Library
Hole Logged By: L.J. Nelson

Drill Log: Hole R-05-2 (footage in feet)

<u>Footage</u>	<u>Rock Description</u>
0-7	Overburden, sand & gravel
7-152	Andesite, dendritic calcite veining throughout this section
152-153	1/4 inch blue/black quartz veining - sulphides 1% Py, 1% Po, Tr Cpy
153-157	Basalt
157-163	Black 1/4 inch dendritic quartz veins 2% - 3% Po, trace Cpy
163-182	Basalt
182-187	Black 1/4 inch dendritic quartz veins - 3% Po, Trace Py, Cpy
187-303	Dacite to basaltic
303	End of Hole

Logged By:

L.J. Nelson

L.J. Nelson

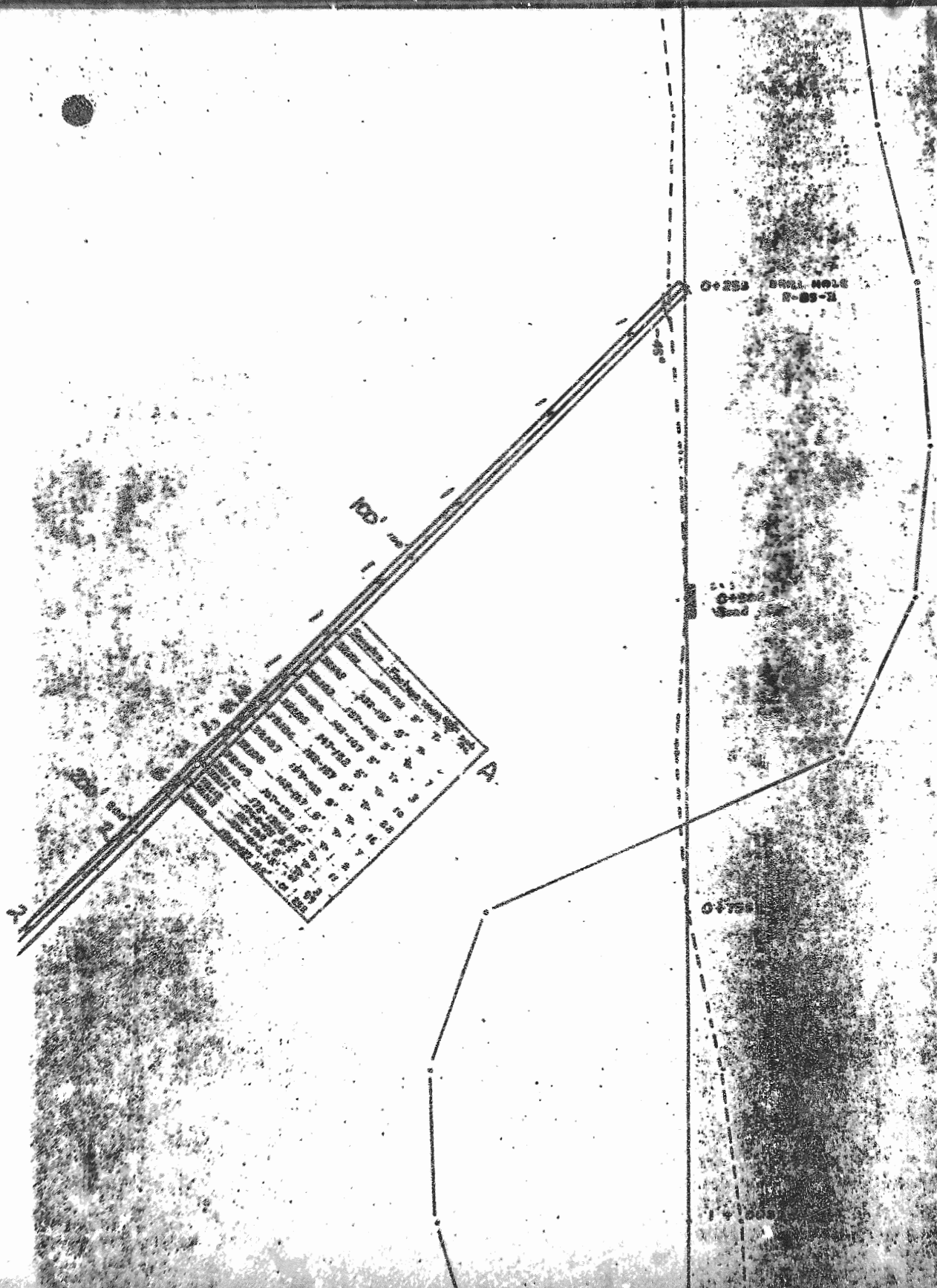
ASSAYS

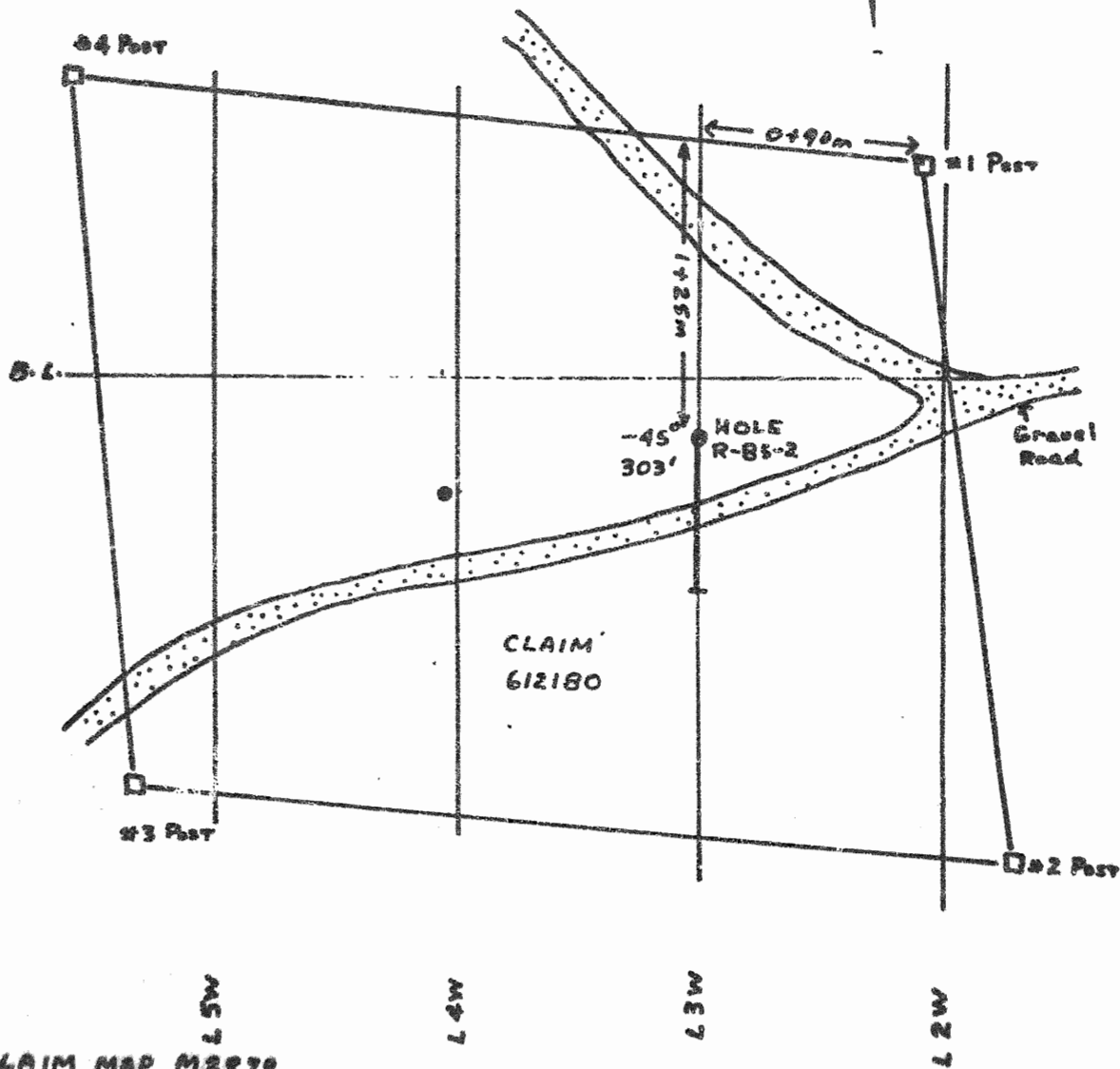
Hole Number: R-85-2

<u>Sample #</u>	<u>Footages</u>		<u>oz/Au/T</u>	<u>ppb Au</u>	<u>ppm Cu</u>	<u>ppm Zn</u>	<u>ppm Ag</u>
	<u>from</u>	<u>to</u>					
72101	127	132	Tr	7			
72102	132	137	Tr	3			
72103	137	142	Tr	7			
72104	142	147	Tr	3			
72105	147	152	Tr	10			
72106	152	157	Tr	22			
72107	157	162	Tr	16			
72108	162	167	Tr	7			
72109	167	172	Tr	2			
72110	172	174.5	Tr	11			
72111	174.5	175	Tr				
72112	175	180	Tr	3			
72113	180	181.5	.01	99			
72114	181.5	187	.01	252			

A.

SAMPLES	FOOTAGE WIDTH		Oz Au	ppb
			T	Au
72101	127-132	5'	Tr	7
72102	132-137	5'	Tr	3
72103	137-142	5'	Tr	7
72104	142-147	5'	Tr	3
72105	147-152	5'	Tr	10
72106	152-157	5'	Tr	22
72107	157-162	5'	Tr	16
72108	162-167	5'	Tr	7
72109	167-172	5'	Tr	2
72110	172-174.5	2.5'	Tr	11
72111	174.5-175	0.5'	Tr	-
72112	175-180	5'	Tr	3
72113	180-181.5	1.5'	.01	99
72114	181.5-187	5.5'	.01	252





CLAIM MAP M2879
LOCATION DRILL HOLE R-85-2.
RIVERTON RESOURCES CORP.
FOURBAY LAKE AREA, N.W. ONT.



Hole Number: R-85-3
Line: 1+00 W
Station: 1+00 meters South
Collar Angle: -45 degrees
Direction of Hole: South Down Line
Final Depth: 307 feet
Claim Location: 612181
Mining District: Kenora and Thunder Bay
Mining Division: Patricia
Area: Fourbay Lake Area, Ontario
Claim Map: M 2879
N.T.S.: 52-J-2
Drilled By: Morissette Diamond Drilling for
Riverton Resources Corp.
Core Size: NQ
Casing: Pulled
Drilling Started: January 25, 1985
Drilling Finished: January 29, 1985
Core Stored: Sioux Lookout, Ontario - Core Library
Hole Logged By: L.J. Nelson

Drill Log: Hole R-85-3 (footage in feet)

<u>Footage</u>	<u>Rock Description</u>
0-67	Overburden - Muskeg 0-25 feet - Sand 25-67 feet
67-174	Andesite
174-177	Mineralization 174-175 (5% Po) (Trace Cpy)
177-193	Basalt
193-199	Black cherty rhyolite band - 1% - 2% Py, Po - Minor graphite
199-307	Intermediate tuff
307	End of Hole

Logged By:

L.J. Nelson

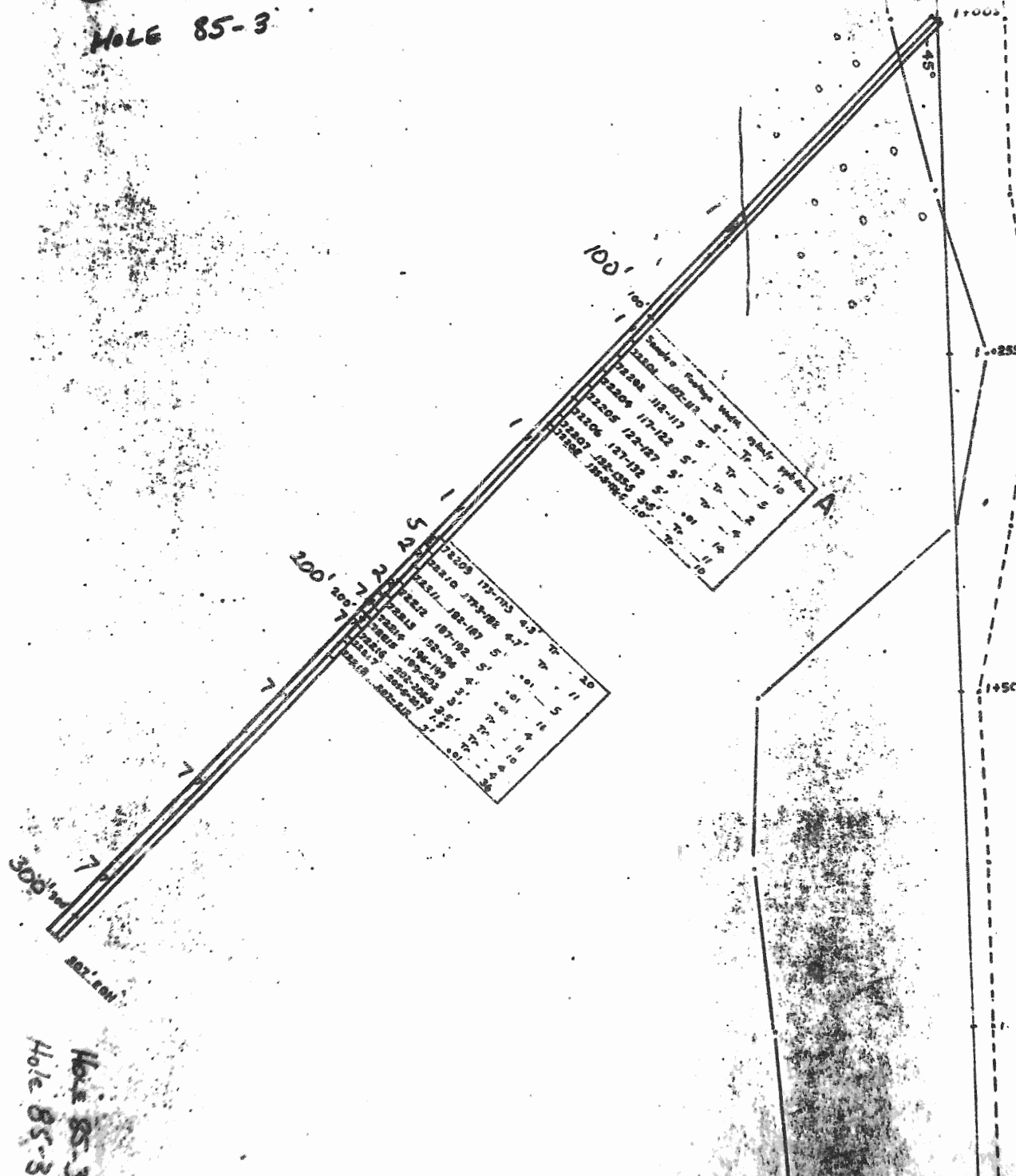
L.J. Nelson

ASSAYS

Hole Number: R-85-3

Sample #	Footages from to	oz/Au/T	ppb Au	ppm Cu	ppm Zn	ppm Ag
72201	107 112	Tr	10			
72202	112 117	Tr	5			
72203						
72204	117 122	Tr	2			
72205	122 127	Tr	4			
72206	127 132	.01	14			
72207	132 135.5	Tr	11			
72208	135.5 136.5	Tr	10			
72209	173 177.3	Tr	20			
72210	177.3 182	Tr	11			
72211	182 187	.01	5			
72212	187 192	.01	16			
72213	192 196	.01	4			
72214	196 199	Tr	11			
72215	199 202	Tr	10			
72216	202 205.5	Tr	4			
72217	205.5 207	Tr	4			
72218	207 212	.01	36			

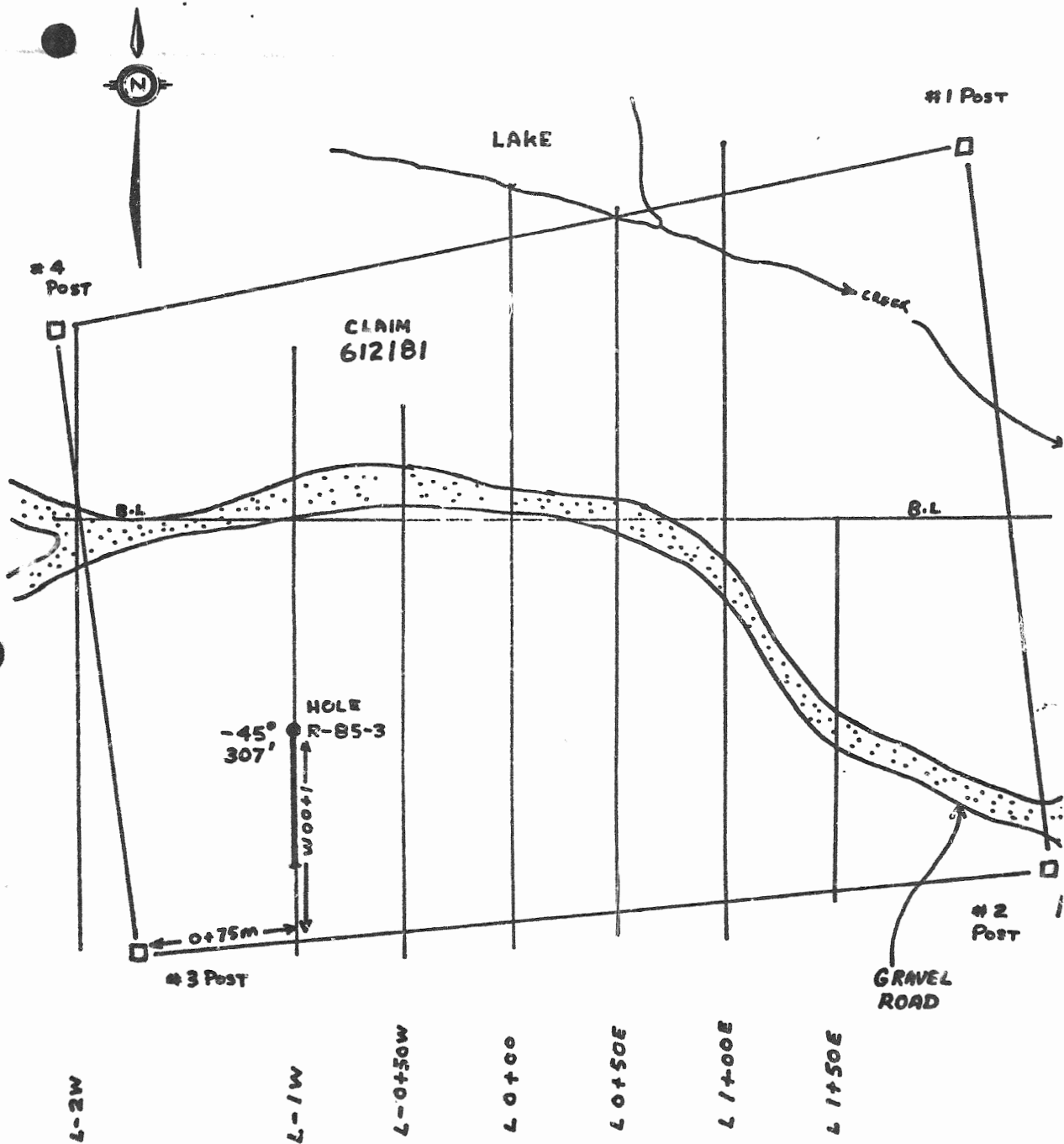
HOLE 85-3



A.

SAMPLES	FOOTAGE	WIDTH	oz Au/T	ppb Au
72201	107-112	5'	Tr	10
72202	112-117	5'	Tr	5
72204	117-122	5'	Tr	2
72205	122-127	5'	Tr	4
72206	127-132	5'	.01	14
72207	132-135.5	3.5'	Tr	11
72208	135.5-136.5	1.0'	Tr	10
72209	173-177.3	4.3'	Tr	20
72210	177.3-182	4.7'	Tr	11
72211	182-187	5'	.01	5
72212	187-192	5'	.01	16
72213	192-196	4'	.01	4
72214	196-199	3'	Tr	11
72215	199-202	3'	Tr	10
72216	202-205.5	3.5'	Tr	4
72217	205.5-207	1.5'	Tr	4
72218	207-212	5'	.01	36

Hole 85-3
Hole 85-3



CLAIM MAP 2879
 FOURBAY LAKE AREA, ONTARIO
 LOCATION HOLE R-B5-3
 RIVERTON RESOURCES CORP.



Hole Number: R-85-4
Line: 3+20 E
Station: 0+50 meters North
Collar Angle: -45 degrees
Direction of Hole: South Down Line
Final Depth: 307 feet
Claim Location: 612182
Mining District: Kenora and Thunder Bay
Mining Division: Patricia
Area: Fourbay Lake Area, Ontario
Claim Map: M 2879
N.T.S. 52-J-2
Drilled By: Madisette Diamond Drilling for
Riverton Resources Corp.
Core Size: NQ
Casing: Pulled
Drilling Started: January 30, 1985
Drilling Finished: February 2, 1985
Core Stored: Sioux Lookout, Ontario - Core Library
Hole Logged By: L.J. Nelson

Drill Log: Hole R-85-4 (footage in feet)

<u>Footage</u>	<u>Rock Description</u>
0-67	Overburden, gravel
67-72	Dark grey to black Qtz veins
72-222	Dacite, greenish grey
222-242	Mineralization - Blackish/grey quartz veins - 8% - 10% sulphides (2% - 3% Cpy) (1% - 5% Py)
242-282	Dacite
282-307	Basalt
307	End of Hole

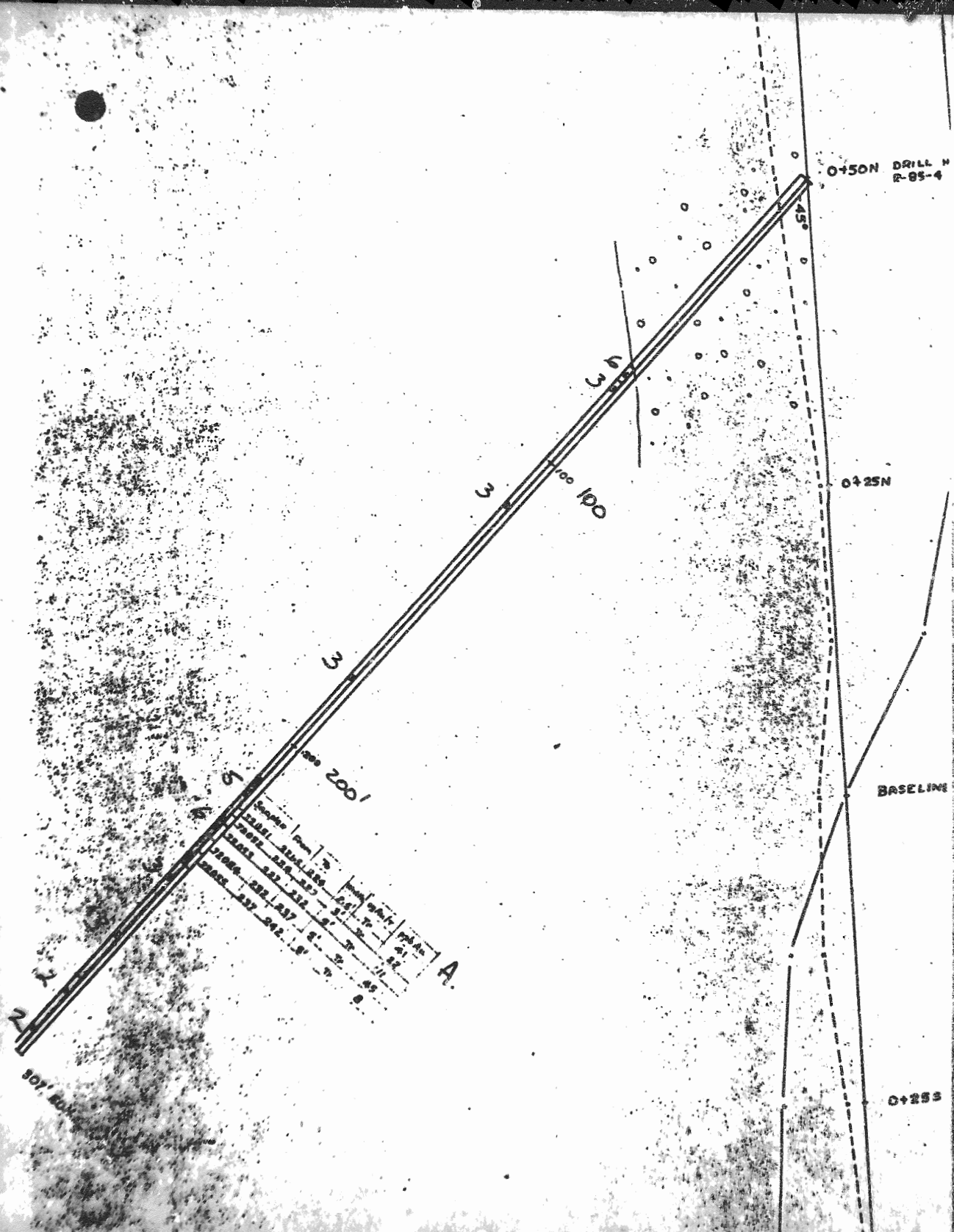
Logged By:

L.J. Nelson

L.J. Nelson

A.

SAMPLES	FROM	TO	WIDTH	oz Au/T	ppb Au
72051	221.5	224	2.5'	Tr	41
72052	224	227	3'	Tr	22
72053	227	232	5'	Tr	11
72054	232	237	5'	Tr	45
72055	237	242	5'	Tr	8



Sample	From	To	Width	oz Au/T	ppb Au
72051	221.5	224	2.5'	Tr	41
72052	224	227	3'	Tr	22
72053	227	232	5'	Tr	11
72054	232	237	5'	Tr	45
72055	237	242	5'	Tr	8

ASSAYS

Hole Number: R-85-4

<u>Sample #</u>	<u>Footages</u> <u>from to</u>	<u>oz/Au/T</u>	<u>ppb Au</u>	<u>ppm Cu</u>	<u>ppm Zn</u>	<u>ppm Ag</u>
72051	221.5 224	Tr	41			
72052	224 227	Tr	22			
72053	227 232	Tr	11			
72054	232 237	Tr	45			
72055	237 242	Tr	8			

#4
POST



#1
POST

CLAIM
612182

0420M
HOLE
R-85-4
-45°
307'

B.L.

Pointer
Lake

2185m

#3
POST

0450m

#2
POST

GRAVEL
ROAD

L-3E

L-4E

L-5E

L-6E

CLAIM MAP 2879
FOURBAY LAKE AREA, ONTARIO
LOCATION HOLE R-85-4
RIVERTON RESOURCES CORP



Hole Number: R-85-5
Line: 4+00 E
Station: 0+75 meters North
Collar Angle: -45 degrees
Direction of Hole: South Down Line
Final Depth: 367 feet
Claim Location: 612182
Mining District: Kenora and Thunder Bay
Mining Division: Patricia
Area: Fourbay Lake Area, Ontario
Claim Map: M 2879
N.T.S. 52-J-2
Drilled By: Madisette Diamond Drilling for
Riverton Resources Corp.
Core Size: NQ
Casing: Left in Hole
Drilling Started: February 3, 1985
Drilling Finished: February 5, 1985
Core Stored: Sioux Lookout, Ontario - Core Library
Hole Logged By: L.J. Nelson

Drill Log: Hole R-85-5 (footage in feet)

<u>Footage</u>	<u>Rock Description</u>
0-36	Overburden, sand & gravel
36-318	Andesite (dacite in places)
318-321	Black cherty rhyolitic material (possibly fine grained graphite causing black colouration)
321-324	Mineralization 1% - 3% sulphides in broken up material with black quartz veins
324-338	Dacite Scattered sulphides 1% - 2% pyrite
338-367	Basalt
367	End of Hole

Logged By:



L.J. Nelson

ASSAYSHole Number: R-85-5

Sample #	Footages from to	oz/Au/T	ppb Au	ppm Cu	ppm Zn	ppm Ag
72056	318 321		7	66	127	0.2
72057	321 323		4	940	32	0.2
72058	323 327		49	240	123	0.2
72059	327 332	0.139		290	114	0.4
72060	332 337		36	138	162	0.2
72061	337 342		23	112	180	0.4
72062	342 347		29	108	205	0.2
72063	347 349		14	114	155	0.2
72064	349 349.5		389	2050	58	0.4
72065	349.5 352		20	132	156	0.2
72066	352 357		283	106	142	0.2
72067	357 360		12	108	137	0.2
72068	360 363.5		3	66	195	0.2
72069	363.5 364.5		191	370	44	0.8
72070	364.5 367		16	80	106	0.2
72071	367 372		15	72	102	0.6
72072	372 377		4	132	114	0.4

Creek
Baseline

LINE 4 E

A.

Samples	From	To	Width	oz Au/T	ppb Au	ppm Cu	ppm Zn	ppm Ag
72056	318	321	3'	-	7	66	127	0.2
72057	321	323	2'	-	4	940	32	0.2
72058	323	327	4'	-	49	240	123	0.2
72059	327	332	5'	0.139	-	290	114	0.4
72060	332	337	5'	-	36	138	162	0.2

LEGEND

Geophysics
VLS-5M16 Survey Station Cutler, Maine II
Instrument Geonics EM-16
IN-PHASE PLOT
QUADRATURE PLOT
1" = 20'

ASSAYS

SAMPLE # ASSAY WIDTH IN FEET, oz Au/T,
%Cu, %Zn, or Ag/T.

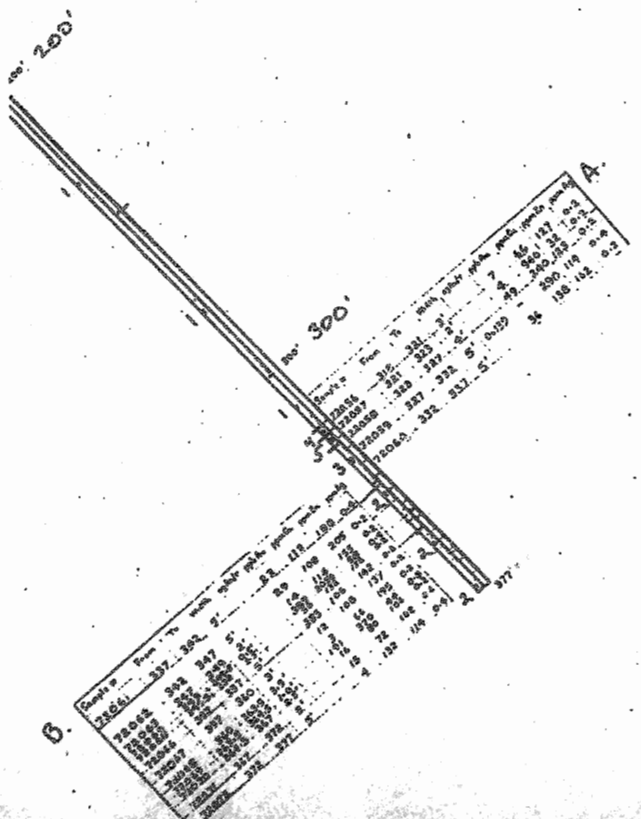
GEOLOGY

- S - ROCK TYPE AS DESCRIBED BELOW
- ANDESITE
- BASALT
- DACITE
- BLACK CHERTY ANDALITE
- MINERALIZATION

hole BS-5

B.

Samples	From	To	Width	oz Au/T	ppb Au	ppm Cu	ppm Zn	ppm Ag
72061	337	342	5'	-	23	112	188	0.4
72062	342	347	5'	-	29	108	205	0.2
72063	347	349	2'	-	14	114	155	0.2
72064	349	349.5	0.5'	-	389	2050	58	0.4
72065	349.5	352	2.5'	-	20	132	156	0.2
72066	352	357	5'	-	283	106	142	0.2
72067	357	360	3'	-	12	108	137	0.2
72068	360	363.5	3.5'	-	3	66	195	0.2
72069	363.5	364.5	1.0'	-	191	370	44	0.8
72070	364.5	367	2.5'	-	16	80	106	0.2
72071	367	372	5'	-	15	72	102	0.6
72072	372	377	5'	-	4	132	114	0.4



#4 Post



B.L.

#3 Post

GRAVEL ROAD

237

247

257

267

CLAIM MAP 2879
FOURBAY LAKE AREA, ONTARIO
LOCATION HOLE R-85-5
RIVERTON RESOURCES CORP

CLAIM
612182

HOLE
R-85-5
-45°
367'

1480m

1420m

Pointer
Lake

#1 Post

#2 Post



LEGEND

REDUCED DRILL SECTIONS

Geophysics

VLF-EM16 Survey station Cutler, Maine 18-6 KHz
Instrument Geonics EM-16

IN-PHASE PLOT -----

QUADRATURE PLOT -----

-10 0 +10 +20 +30 1" = 20%

ASSAYS



SAMPLE #; ASSAY WIDTH IN FEET; oz Au/T; ppb Au;
%Cu; %Zn; oz Ag/T.

GEOLOGY



3- ROCK TYPE AS DESCRIBED BELOW.



ANDESITE



BASALT



DACITE



BLACK CHERTY RHYOLITE



MINERALIZATION



QUARTZ VEINING



INTERMEDIATE TUFF



BELL-WHITE ANALYTICAL LABORATORIES LTD.

P.O. BOX 187.

HAILEYBURY, ONTARIO

TEL: 872-3107

Certificate of Analysis

NO. 8117-85

Page 1 of 2

DATE: March 1, 1985

SAMPLE(S) OF: Rejects (54)

RECEIVED: February 1985

SAMPLE(S) FROM: Loydex Resources Inc.

LOYDEX RESOURCES INC.
 24 KENTON COURT
 WHITBY, ONTARIO L1N 5X7
Received March 6/85
L. J. Wells

Sample No.	Copper ppm	Zinc ppm	Silver ppm
72001	176	62	0.4
2	152	132	0.2
3	700	2728**	0.6
4	490	180	0.2
5	240	164	0.2
6	164	118	0.2
7	98	186	0.2
8	144	130	0.4
9	178	126	0.2
72010	370	35	0.2
1	136	124	0.2
2	108	78	0.2
3	1040	80	0.4
72015	86	71	0.2
6	104	132	0.2
7	86	94	0.2
8	148	41	0.2
9	126	42	0.4
72020	148	59	0.6
72051	940	89	0.4
2	990	53	0.2
3	310	142	0.4
4	620	136	0.8
5	138	143	0.2
72101	180	54	0.2
2	172	41	0.2
3	148	60	0.6
4	200	55	0.4

Note 85-1

Note 85-4

Note 85-2

** Checked

IN ACCORDANCE WITH LEAD ESTABLISHED NORTH AMERICAN CUSTOM, UNLESS IT IS SPECIFICALLY STATED OTHERWISE GOLD AND SILVER VALUES REPORTED ON THESE SHEETS HAVE NOT BEEN ADJUSTED TO COMPENSATE FOR LOSS OF AND GAINS INCURRED IN THE FINE ASSAY PROCESS.

BELL-WHITE ANALYTICAL LABORATORIES LTD.

PER:



BELL-WHITE ANALYTICAL LABORATORIES LTD.

P.O. BOX 187.

HAILEYBURY, ONTARIO

TEL: 672-3107

Certificate of Analysis

NO. B117-85

Page 2 of 2

DATE: March 1, 1985

SAMPLE(S) OF: Rejects (54)

RECEIVED: February, 1985

SAMPLE(S) FROM: Loydex Resources Inc.

LOYDEX RESOURCES INC.
24 KENTON COURT
WHITEHORSE, ONTARIO, L1N 8Y2
W. J. ...

<u>Sample No.</u>	<u>Copper ppm</u>	<u>Zinc ppm</u>	<u>Silver ppm</u>
72105	148	140	0.4
6	120	162	0.2
7	146	144	0.2
8	100	164	0.2
9	74	145	0.4
72110	68	172	0.2
72112	52	243	0.2
3	50	216	0.2
4	460	110	0.2
72201	156	35	0.2
2	94	25	0.4
72204	152	38	0.4
5	126	35	0.2
6	136	24	0.2
7	130	52	0.2
8	230	23	0.2
9	480	294	0.4
72210	220	86	0.2
1	184	70	0.6
2	156	72	0.6
3	290	75	0.2
4	138	166	0.4
5	134	58	0.4
6	158	46	0.4
7	166	47	0.2
8	106	99	0.2

Hole 85-2

Hole 85-3

IN ACCORDANCE WITH LONG ESTABLISHED NORTH AMERICAN CUSTOM, UNLESS IT IS SPECIFICALLY STATED OTHERWISE GOLD AND SILVER VALUES REPORTED ON THESE SHEETS HAVE NOT BEEN ADJUSTED TO COMPENSATE FOR LOSSES AND GAINS INHERENT IN THE FIRE ASSAY PROCESS.

BELL-WHITE ANALYTICAL LABORATORIES LTD.

[Signature]



BELL-WHITE ANALYTICAL LABORATORIES LTD.

P.O. BOX 187.

HAILEYBURY, ONTARIO

TEL: 672-3107

area code 705

Certificate of Analysis

NO. 883-85

DATE: February 20, 1985

SAMPLE(S) OF: Core (17)

RECEIVED: February, 1985

SAMPLE(S) FROM: Mr. Ken Bernier
Loydex Resources Inc.

*Riverina Resources Corp - Powder Lake Project
Hole # 5
near Ontario*

Sample No.	Gold ppb	Gold oz.	Cu ppm	Silver ppm	Zinc ppm
6072056	7		66	0.2	127
7	4		940	0.2	32
8 ⁵⁹	49	0.139	240	0.2	123
		0.139	290	0.4	114
6072060	36		138	0.2	162
1	23		112	0.4	188
2	29		108	0.2	205
3	14		114	0.2	155
4	389**	.011	2050	0.4	58
5	20		132	0.2	156
6	283**	.008	106	0.2	142
7	12		108	0.2	137
8	3		66	0.2	195
9	191	.0056	370	0.8	44
6072070	16		80	0.2	106
1	15		72	0.6	102
2	4		132	0.4	114

Hole 85-

LOYDEX RESOURCES INC.
 24 KENTON COURT
 WHITBY, ONTARIO L1N 5X7

Feb 26/85

** Checked

IN ACCORDANCE WITH LONG ESTABLISHED NORTH AMERICAN CUSTOM, UNLESS IT IS SPECIFICALLY STATED OTHERWISE GOLD AND SILVER VALUES REPORTED ON THESE SHEETS HAVE NOT BEEN ADJUSTED TO COMPENSATE FOR LOSSES AND GAINS INHERENT IN THE FIRE ASSAY PROCESS

BELL-WHITE ANALYTICAL LABORATORIES LTD.



BELL-WHITE ANALYTICAL LABORATORIES, LTD *Kewton Copy*

P.O. BOX 187.

HAILEYBURY, ONTARIO

TEL: 523

LOYDEX RESOURCES INC.
24 KENTON COURT
WHITBY, ONTARIO L1N 5X7
W. Nelson

Certificate of Analysis

NO. 896-85

DATE: February 25, 1985

SAMPLE(S) OF: Rejects (54)

RECEIVED: February, 1985

SAMPLE(S) FROM: Loydex Resources Inc.

Sample No.	Gold ppb
72001	10
2	15
3	4
4	36
5	21
6	7
7	5
8	3
9	36
72010	5
1	11
2	41
3	18
72015	14
6	8
7	3
8	12
9	12
72020	30
72051	41
2	22
3	11
4	45
5	8
72101	7
2	3
3	7

Sample No.	Gold ppb
72104	3
5	10
6	22
7	16
8	7
9	2
72110	11
72112	3
3	99
4	252
72201	10
2	5
72204	2
5	4
6	14
7	11
8	10
9	20
72210	11
1	5
2	16
3	4
4	11
5	10
6	4
7	4
8	36

IN ACCORDANCE WITH LONG ESTABLISHED NORTH AMERICAN CUSTOM UNLESS IT IS SPECIFICALLY STATED OTHERWISE GOLD AND SILVER VALUES REPORTED ON THESE SHEETS HAVE NOT BEEN ADJUSTED TO COMPENSATE FOR LOSSES AND GAINS INHERENT IN THE FIRE ASSAY PROCESS.

BELL-WHITE ANALYTICAL LABORATORIES LTD

[Signature]
PER

HOLE #1

72001 106-111
002 111-116
003 116-121
004 121-126
005 126-131
006 131-136
007 136-141
008 141-146
009 146-149
010 149-150
011 150-155
012 155-160
013 160-162
014 162-162.4
015 162.4-167
016 167-172
017 172-177
018 177-182
019 182-187
029 187-192

HOLE # 2

72101 127-132
102 132-137
103 137-142
104 142-147
105 147-152
106 152-157
107 157-162
108 162-167
109 167-172
110 172-174½
111 174½-175
112 175-180
113 180-181½
114 182½-187

HOLE #3

72201 107-112
202 112-117
203
204 117-122
205 122-127
206 127-132
207 132-135.5
208 135.5-173
209 173-177.5
210 177.5-182
211 182-187
212 187-192
213 192-196
214 196-199
215 199-202
216 202-205.5
217 205.5-207
218 207-21

ASSAYS 73 x \$32.50 = \$2372.50

**DUPLICATE COPY
FOR QUALITY ORIGINAL
TO FOLLOW**

HOLE #1	DEPTH	72101	72201
001 106-111	72101 127-132	72201 107-1	
002 111-116	102 132-137	202 112-11	
003 116-121	103 137-142	203	
004 121-126	104 142-147	204 117-12	
005 126-131	105 147-152	205 122-12	
006 131-136	106 152-157	206 127-12	
007 136-141	107 157-162	207 132-13	
008 141-146	108 162-167	208 135.5-1	
009 146-151	109 167-172	209 173-17	
010 149-150	110 172-174 1/2	210 177.3-1	
011 150-153	111 174 1/2 -175	211 182-18	
012 153-160	112 175-180	212 187-19	
013 160-162	113 180-181 1/2	213 192-19	
014 162-162.4	114 182 1/2 -187	214 196-19	
015 162.4-167		215 199-20	
016 167-172	14	216 202-20	
017 172-177		217 203.5-20	
018 177-182		218 207-21	
019 182-187			
020 187-192			

20

ASSAYS 73 x 32.50 = 2372.50

LOYDEX RESOURCES INC.
 24 KENTON COURT
 WHITBY, ONTARIO L1N 5X7

CSA
 Feb 26/85

HOLE #4

72051	221.5-224
052	224-227
053	227-232
054	232-237
055	237-242

HOLE #5

72056	318-321
57	321-323
58	323-327
59	327-332
60	332-337
61	337-342
62	342-347
63	347-349
64	349-349.5
65	349.5-352
66	352-357
67	357-360
68	360-363.5
69	363.5-364.5
70	364.5-367
71	367-372
72	372-377

**DUPLICATE COPY
POOR QUALITY ORIGINAL
TO FOLLOW**

HOLE # 4

HOLES

7.20.51 221.5-224
 052 224 -227
 053 227 -232
 054 232 -237
 055 237 -242

5

72056 318-321
 57 321-323
 58 323-327
 59 327-332
 060 332-337
 61 337-342
 62 342-347
 63 347-349
 64 349-349.5
 65 349.5-352
 66 352-357 .008
 67 357-360
 68 360-363.5
 69 363.5-369.5
 70 369.5-367
 71 367-372
 72 372-377

17

LOYDEX RESOURCES INC.
 24 KENTON COURT
 WHITBY, ONTARIO L1N 5X7

ESTABLISHED

Feb 26/85

MAILGRAM SERVICE CENTER
MIDDLETOWN, VA. 22645
21AM

Western Union Mailgram 

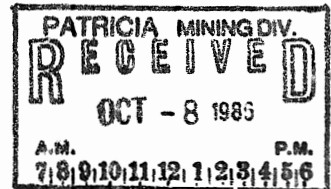
1-011590A052 02/21/85 ICS IPMYNF RNO CASB
991 RENO NV 02-21 1008A PST RYNE

RICHARD ST PIERRE, RIVERTON RESOURCES CORP
877 NORTH 8TH WEST
RIVERTON WY 82501

307

ATTEMPTED DELIVERY BY PHONE UNSUCCESSFUL, NO PHONE LISTED.

1-009142A052 02/21/85
ICS IPMPTUH PTL
00851 02-21 0851A PST PIUG
ICS IPMYNS AC 307
1-117323G052 02/21/85
ICS IPMIIKA IISS
IISS F M CNT 21 1118
FMS TH WEST RIVERTON WY
CNC0016 CTE684 INV091 ED12 52 FR
LDNX
TDTN WHITBY ONT 21 1115
RICHARD ST PIERRE - RIVERTON RESOURCES CORP
877 NORTH 8TH WEST
RIVERTON WY 82501
BT



~~REQUIRE ADVANCE PAYMENT BEFORE ASSAYING RIVERTON - POINTER~~
LAKE 73 SAMPLES AT DOLLARS 32.50 PER SAMPLE EQUALS 2372.50
DOLLARS CANADIAN. FORWARD TO LOYDEX RESOURCES INC ACCOUNT
1016-273 BANK OF MONTREAL 100 BROCK STREET SOUTH WHITBY ONTARIO
L.J. NELSON, LOYDEX RESOURCES INC

MN
1151 EST

1247 EST

1313 EST

MGMCOMP MGM

RECEIVED

OCT 27 1985

MINING LANDS SECTION

LOYDEX RESOURCES INC.
 24 KENTON COURT
 WHITBY, ONTARIO L1N 5X7

URGENT! AS SOON AS POSSIBLE 07

FROM
 DEPT

COPY TO
 DATE Feb 21/85
 SUBJECT

SEND TO Richard St. Pierre
 Riverton Resource Corp.
 877 N 8th West
 Riverton, Wyoming U.S.A. 82501

MESSAGE Expense Riverton - Pointer Lake Project

Items ① → ④	Page ①	_____	\$ 542.01	CDN
Items ⑤ → ⑥	Page ②	_____	2572.50	
Item ⑦	Page ③	_____	140.50	
Item ⑧	Page ④	_____	1872.98	
Total			\$ 5,127.99	
* less telex advice intercept			2372.50	

*2 Amount owing to Loydex: \$ 2,755.49 CD.

LS Nelson

* See Item ⑤ Page ②.

*2 Deposits to Acc # 1016-273, Bank of Montreal, 100 Brock St. South
 Whitby, O.

4S500E - 1 ← SPEEDMEMO → REPLY FROM DATE

MOORE SPEEDPLY - 1 - MOORE CLEAR PRINT PATENTED 1983-1984

LOYDEX RESOURCES INC.

24 KENTON COURT
WHITBY, ONTARIO L1N 5X7

URGENT AS SOON AS POSSIBLE

0765

FROM

DEPT.

COPY TO

DATE

Feb 21/85

SUBJECT

SEND TO

Richard St. Pierre
Riverton Resource Corp.
877N 8th West
Riverton Wyoming U.S.A. 82501

MESSAGE

* ⑤ ~~Advance payment to Bell-White Laboratories for assaying~~
73 (seventy-three) samples from Custom Fire Assaying
for ppb Au (\$8.50), oz Ag/T (\$8.50), %Zn (\$6.50), %Cu (\$6.50),
additional spending of samples (\$2.50) = \$32.50/sample.
Cost 73 samples @ \$32.50/sample \$2372.50
Advance requested Feb 21/85 by Telex.

⑥ Feb 5/85 - K. Bernier drove to drill site to pick
up core for hole R-85-5

\$200.00

⑦ (see page 3).

\$2572.50

45500E - 1

← SPEEDIMEMO →

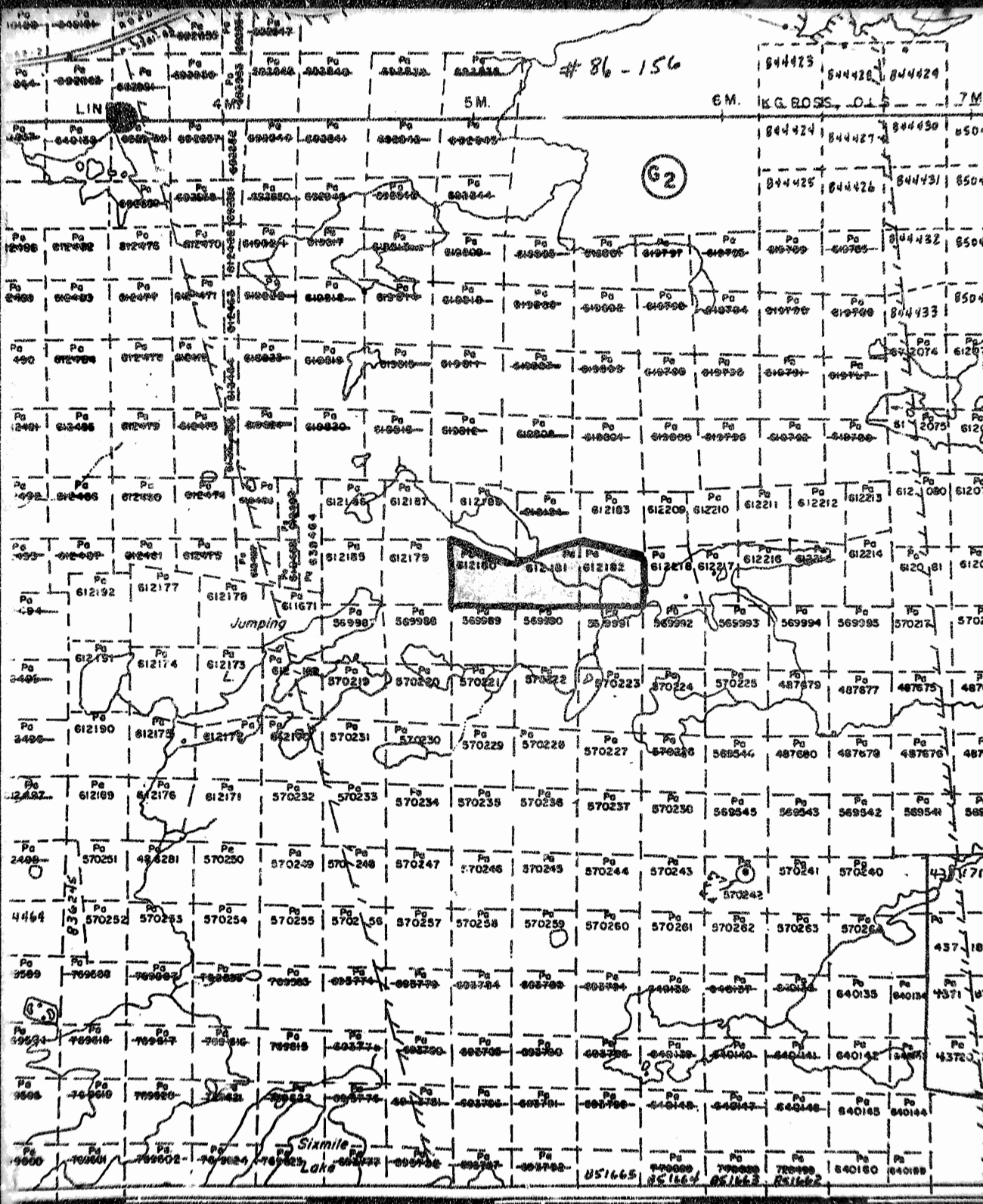
MOORE SPEEDIPLY - 1 - MOORE CLEAN PRINT PATENTED 1963-1968

REPLY
FROM

DATE

Riverton area. 307-856-9271

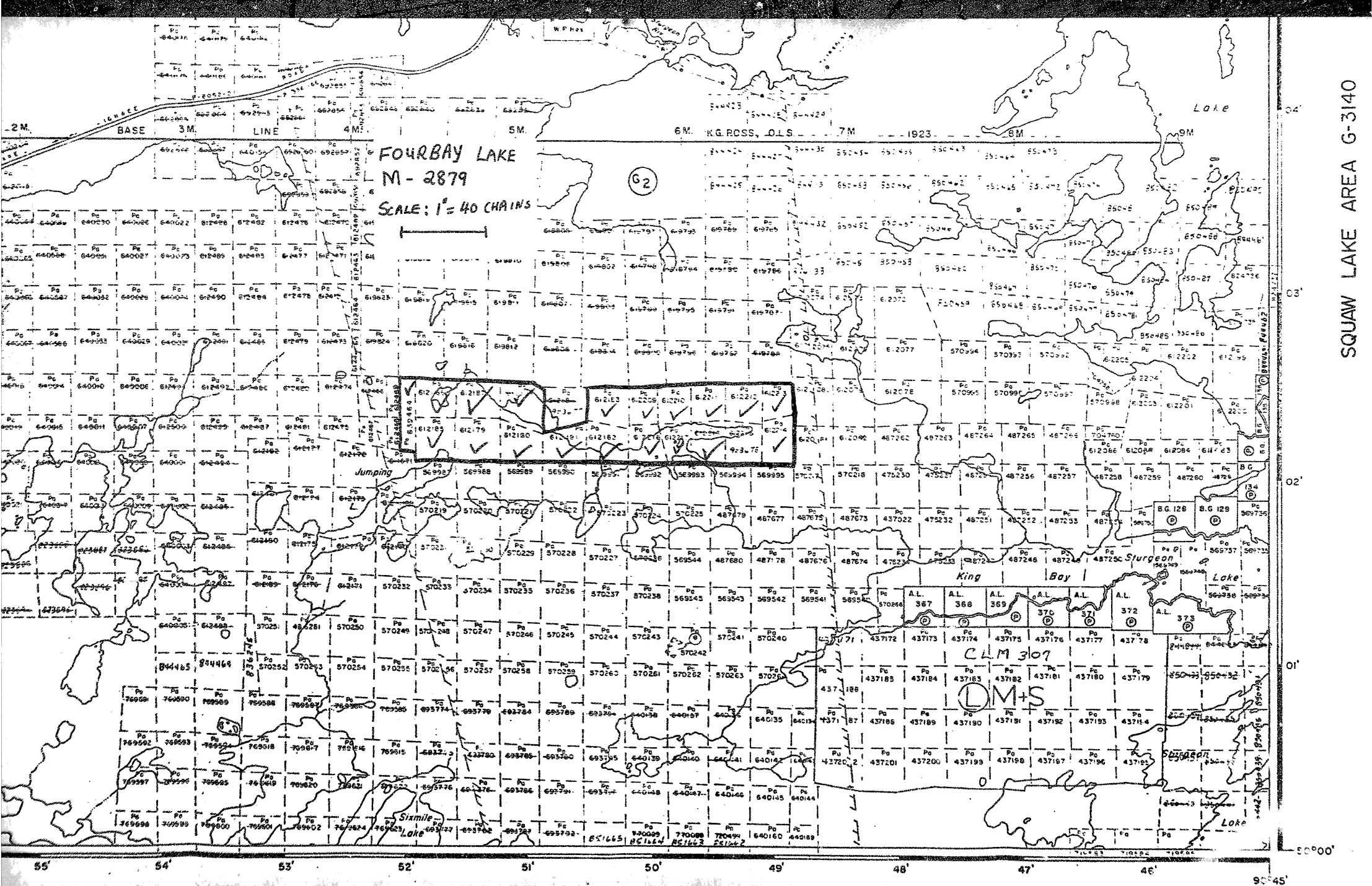
home Peggy: 307-857-3022



53' 52' 51' 50' 49'

Sixmile Lake Area - G-2561

Sixmile Lake G-2543



FOURBAY LAKE
M-2879

SCALE: 1" = 40 CHAINS

(62)

Jumping

King Bay

CLM 3107

DM+S

Siamile Lake

Lake

Sturgeon Lake

Sturgeon Lake

SQUAW LAKE AREA G-3140

55' 54' 53' 52' 51' 50' 49' 48' 47' 46' 90°00' 90°01' 90°02' 90°03' 90°04'

INVERTON RESOURCES CORP

877 North 8th West St., Reverton, Wyoming USA 82501

Summary of Work Performance and Distribution of Credits

Total Work Done	Mining Claim			Mining Claim			Mining Claim		
	Prefix	Number	Work Days Cr.	Prefix	Number	Work Days Cr.	Prefix	Number	Work Days Cr.
Performance of the following (Check one only) <input type="checkbox"/> Manual Work <input type="checkbox"/> Shaft Sinking Drifting or other Lateral Work <input type="checkbox"/> Compressed Air, other Power driven or mechanical equip. <input type="checkbox"/> Power Stripping <input checked="" type="checkbox"/> Diamond or other Core Drilling <input type="checkbox"/> Land Survey	PA	639464	75	PA	612186	75	PA	612214	75
		612179	75		612187	75		612215	75
		612180	75		612188	75		612216	75
		612181	75		612209	75		612217	75
		612182	85		612210	75		612218	75
		612183	75		612211	75			
		612184	75		612212	75			
		612185	75		612213	75			

All the work was performed on Mining Claim (s): 612180, 612181, 612182

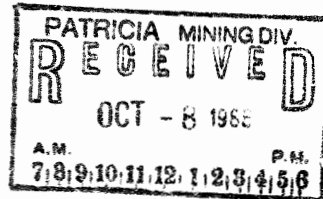
Required information eg: type of equipment, Names, Addresses, etc. (See Table Below)

DRILLING BY **KENORA DIAMOND DRILLING (Morissette Drilling)**
 P.O. Box 661
 Kenora, Ontario P9N 3X6
 (1) R. St. Amour } Drill operators
 (2) A. St. Amour }
 (3) D. Leaver }
 (4) R. Vincent }

Hole R-85-1 Jan 20-21/85, NQ 301ft
 Hole R-85-2 Jan 22-24/85, NQ 303ft
 Hole R-85-3 Jan 25-29/85, NQ 307ft
 Hole R-85-4 Jan 30-Feb 1/85, NQ 307ft
 Hole R-85-5 Feb 3-5/85, NQ 367ft

RECEIVED Total 1585ft

OCT 21 1986



MINING LANDS SECTION

Date of Report: April 1/85
 Recorded Holder or Agent (Signature): CS Nelson

Certification Verifying Report of Work

I hereby certify that I have a personal and intimate knowledge of the facts set forth in the Report of Work annexed hereto, having performed the work or witnessed same during and/or after its completion and the annexed report is true.

Name and Postal Address of Person Certifying

L.J. NELSON, 24 KENTON CRT, WHITBY, ONTARIO

LOYDEX RESOURCES INC.

Date Certified: April 1/85
 Certified by (Signature): CS Nelson

Table of Information/Attachments Required by the Mining Recorder

Type of Work	Specific Information per type	Other information (Common to 2 or more types)	Attachments
Manual Work			
Shaft Sinking, Drifting or other Lateral Work	None	Name and address of man who performed manual work / operated equipment, together with dates and hours of employment.	Work Sketch: show location and extent of work in relation to the nearest claim post.
Compressed air, other power driven or mechanical equip.	Type of equipment		
Power Stripping	Type of equipment and amount expended. Note: Proof of actual cost must be submitted within 30 days of recording.	Name and address of owner or operator together with dates when drilling/stripping done.	
Diamond or other core drilling	Signed core log showing: footage, diameter of core, number and angle of holes.		Work Sketch (as above) in duplicate
Land Survey	Name and address of Ontario land surveyor.	Nil	Nil



Report of Work
(Geophysical, Geological,
Geochemical and Expenditures)

Instructions: - Please type or print.
- If number of mining claims traversed exceeds space on this form, attach a list.
Note: - Only days credits calculated in the "Expenditures" section may be entered in the "Expend. Days Cr." columns.
- Do not use shaded areas below

#86-156

29494

The Mining Act

Type of Survey: **n.a. assay charges** Township or Area: **M2879**
 Claim Holder(s): **Riverton Resources Corporation** Fourbay Lake area **22543**
 Address: **877 North 8th West - Riverton; Wyoming 82501 U.S.A.** Inspector's License No. **T-1779**
 Survey Company: **Bell-White Analytical Laboratories Ltd** Date of Survey (from & to): **Feb. '85. March '85** Total Miles of line Cut: **n.a.**
 Name and Address of Author (of Geo-Technical report): **n.a.**

Credits Requested per Each Claim in Columns at right

Special Provisions	Geophysical	Days per Claim
For first survey: Enter 40 days. (This includes line cutting)	- Electromagnetic	
	- Magnetometer	
For each additional survey: using the same grid. Enter 20 days (for each)	- Radiometric	
	- Other	
	Geological	
	Geochemical	
Man Days Complete reverse side and enter total(s) here	Geophysical	Days per Claim
	- Electromagnetic	
	- Magnetometer	
	- Other	
	Geological	
	Geochemical	
Airborne Credits Note: Special provisions credits do not apply to Airborne Surveys.	Electromagnetic	Days per Claim
	Magnetometer	
	Radiometric	

Mining Claims Traversed (List in numerical sequence)

Prefix	Mining Claim		Expend. Days Cr.	Prefix	Mining Claim		Expend. Days Cr.
	Number	Expend. Days Cr.			Number	Expend. Days Cr.	
PA	639464	5					
	612179	5					
	612180	5					
	612181	5					
	612182	58.2					
	612183	8.15					
	612184	5					
	612185	5					
	612186	5					
	612187	5					
	612188	5					
	612209	5					
	612210	5					
	612211	5					
	612212	5					
	612213	5					
	612214	5					
	612215	5					
	612216	5					
	612217	5					
	612218	5					

RECEIVED
OCT 29 1986

MINING LANDS SECTION

PATRICIA MINING DIV.
RECEIVED
OCT - 8 1986
A.M. P.M.
2:09:10/11:22/11:23/1:56

Expenditures (excludes power stripping)

Type of Work Performed: **ASSAYING DRILL CORE**

Performed on Claim(s): **drilling on PA 612180, 612181 & 612182 SECTION 77-19**

Calculation of Expenditure Days Credits

Total Expenditures	Total Days Credits
\$ 2372.50	15 = 158.2

Instructions
Total Days Credits may be apportioned at the claim holder's choice. Enter number of days credits per claim selected in columns at right.

Date: **Oct 6, 1986** Recorder/Author or Agent (Signature): *[Signature]*

For Office Use Only

Total Days Cr. Recorded	Date Recorded	Mining Recorder
158.2	Oct. 8/86	<i>[Signature]</i>
	Date Approved as Recorded	Branch Recorder
	87.1.9	<i>[Signature]</i>

Certification Verifying Report of Work
I hereby certify that I have a personal and intimate knowledge of the facts set forth in the Report of Work annexed hereto, having performed the work or witnessed same during and/or after its completion and the annexed report is true.

Name and Postal Address of Person Certifying: **J. Langelaar - NORONTYX EXPLORATION LTD. 3 Badworth Rd. Box 7 site 11 - Dryden - Ont. P6N 2Y4**

Date Certified: **Oct. 6, 1986**

Man Days are based on eight (8) hour Technical or Line-cutting days. Technical days include work performed by consultants, draftsmen, etc..

Type of Survey

Technical Days		X	7	=	Technical Days Credits	+	Line-cutting Days	=	Total Credits	÷	No. of Claims	=	Days per Claim
<input type="text"/>		X	<input type="text" value="7"/>	=	<input type="text"/>	+	<input type="text"/>	=	<input type="text"/>	÷	<input type="text"/>	=	<input type="text"/>

Type of Survey

Technical Days		X	7	=	Technical Days Credits	+	Line-cutting Days	=	Total Credits	÷	No. of Claims	=	Days per Claim
<input type="text"/>		X	<input type="text" value="7"/>	=	<input type="text"/>	+	<input type="text"/>	=	<input type="text"/>	÷	<input type="text"/>	=	<input type="text"/>

Type of Survey


Technical Days		X	7	=	Technical Days Credits	+	Line-cutting Days	=	Total Credits	÷	No. of Claims	=	Days per Claim
<input type="text"/>		X	<input type="text" value="7"/>	=	<input type="text"/>	+	<input type="text"/>	=	<input type="text"/>	÷	<input type="text"/>	=	<input type="text"/>

Type of Survey

Technical Days		X	7	=	Technical Days Credits	+	Line-cutting Days	=	Total Credits	÷	No. of Claims	=	Days per Claim
<input type="text"/>		X	<input type="text" value="7"/>	=	<input type="text"/>	+	<input type="text"/>	=	<input type="text"/>	÷	<input type="text"/>	=	<input type="text"/>

- Submitted: 2 copies drill logs with assay results
 2 summaries of work (applicable to diamond drilling only.)
 2 certificates of analyses - Bell White Lab.
 2 copies "Mailgram" requesting advance payment for assaying.
 2 copies memo re advance payment
 2 copies memo indicating advance payment made. (Loydex to Riverton)

Note: copies of cancelled cheque will be submitted as soon as possible; to follow!

J. Langelaar

 REGISTERED ENGINEER
 Oct 6, 1986