



52J02SW8696 19 FOURBAY LAKE

010

Diamond Drilling

Area of Fourbay Lake

Report N^o 19

Work performed by: Spooner Mines & Oils Ltd.

Claim N ^o	Hole N ^o	Footage	Date	Note
Pa. 245976	SPO-16	304'	Mar/72	(1)
	SPO-19	202'	Apr/72	(1)
	SPO-20	65'	Apr/72	(1)
Pa. 245967	SPO-17	227'	Mar/72	(1)
	SPO-18	243'	Apr/72	(1)
<i>TOTAL</i>	<u>5 DH</u>	<u>1041 FT</u>		

Notes:

- (1) 272/72 (Sixmile)
autopositive enclosed



THE MINING ACT - DEPARTMENT OF MINES
DIAMOND DRILLING LOG

Start a new page for every new hole, but fill in top portion of form only on first page for each hole.

FILL IN ON EVERY PAGE

HOLE NO. SP0 16 PAGE NO. 1

DRILLING COMPANY CANADIAN LONGYEAR		BOLLAR ELEVATION	DIP ANGLE OF HOLE FROM TRUE NORTH 2° E	TOTAL FOOTAGE 304'	DIP OF HOLE AT collar -50 fr fr fr fr	LOCATION OF HOLE IN RELATION TO A FIXED POINT ON THE CLAIM GRID CO-ORDINATES: 52 +00 E 12 +85 S AS SHOWN ON PLAN.	MAP REFERENCE NO. A-2875 (M.T.S. 52-J-2)	CLAIM NO. PA 245576
DATE HOLE STARTED MAR 27 1972	DATE COMPLETED MAR 29 1972	DATE LOGGED MAR 30 1972	LOGGED BY D. McFADDEN				LOCATION (Twp., Loc., Con. OR Lat. and Long.) FOURDAY LAKE AREA 50° 55' 15" - 50° 01' 15"	
EXPLORATION CO., OWNER OR OPTIONEE GRANGES EXPLORATION AKTIEBOLAG.		DATE SUBMITTED Oct 3/72	SUBMITTED BY (Signature) <i>[Signature]</i>				PROPERTY NAME SPONGER MINES & OILS LIMITED OPTION.	

FOOTAGE FROM TO	ROCK TYPE	DESCRIPTION Color, grain size, texture, minerals, alteration, etc.	PLANAR FEATURE ANGLE	CORE SPECIMEN FOOTAGE	YOUR SAMPLE NUMBER	SAMPLE FOOTAGE		SAMPLE LENGTH	ASSAYS †	
						FROM	TO			
0.0- 12.0	Casing:	0.0 - 7.0 Gravel 7.0 -12.0 Broken Ledge								
7.0- 55.0		Medium grained, dark green, massive rhyodacite								
55.0- 67.6		Coarse grained, dark green, massive diorite.								
67.6-304.0		Medium grained, dark green, massive dacite. Sections rhyolite.								
END OF HOLE										



THE MINING ACT - DEPARTMENT OF MINES
DIAMOND DRILLING LOG

Start a new page for every new hole, but fill in top portion of form only on first page for each hole.

FILL IN ON EVERY PAGE

HOLE NO. 576 17 PAGE 1

DRILLING COMPANY CANADIAN LONGYEAR		COLLAR ELEVATION	BEARING OF HOLE FROM TRUE NORTH 2° E.	TOTAL FOOTAGE 227'	DIP OF HOLE AT collar -50	LOCATION OF HOLE IN RELATION TO A FIXED POINT ON THE CLAIM GRID CO-ORDINATES 80+00E 0+45N AS SHOWN ON PLAN.	MAP REFERENCE NO. M-2875 (NTS 52-3-2)	CLAIM NO. PA-245967
DATE HOLE STARTED MAR 30, 1972	DATE COMPLETED MAR 31, 1972	DATE LOGGED APRIL 1, 1972	LOGGED BY D. M. FADDEN.		ft		LOCATION (Tp., Lot, Con. OR Lat. and Long.) FOURBAY LAKE AREA 50° 54' 30" - 50° 01' 30"	PROPERTY NAME SPORER MINES & OILS LIMITED OPTION.
EXPLORATION CO., OWNER OR OPTIONEE GRANGES EXPLORATION AKTIEBOLAG		DATE SUBMITTED Oct 3, 1972	SUBMITTED BY (Signature) <i>[Signature]</i>		ft			
					ft			
					ft			

FOOTAGE FROM TO	ROCK TYPE	DESCRIPTION Colour, grain size, texture, minerals, alteration, etc.	PLANAR FEATURE ANGLE	CORE SPECIMEN FOOTAGE #	YOUR SAMPLE NUMBER	SAMPLE FOOTAGE		SAMPLE LENGTH	ASSAYS *	
						FROM	TO		CU.	Zn.
0.0-36.0	Casing: 0.0 - 35.0 Clay & Gravel 35.0 - 36.0 Broken Ledge				W	35.0-141.6	106.6			
35.0-141.6	Coarse grained, dark green, massive diorite. Core Angles: 136' 42°				201	141.6-145.6	4.0	.04	.05	
					202	145.6-147.6	2.0	.01	.02	
141.6-145.6	Graphite near solid to solid, 10% pyrrhotite. Traces chalcopryrite.				W	147.6-155.0	7.4			
					203	155.0-156.8	1.8	.02	.01	
145.6-155.0	Coarse-grained, light grey serpentinite. 145.6 - 147.6 .1% pyrrhotite, speck chalcopryrite.				204	156.8-158.8	2.0	.03	.23	
					205	158.8-163.8	5.0	.02	.06	
155.0-227.0	Medium grained, dark green, massive rhyodacite. 155.0-156.8 1% pyrrhotite, trace chalcopryrite				206	163.8-168.0	4.2	.03	.03	
	156.8-158.8 Near solid to solid graphite, 10% pyrrhotite, 1% to 2% chalcopryrite.				207	168.0-170.0	2.0	.03	.11	
					208	170.0-175.0	5.0	.09	.50	
					209	175.0-177.0	2.0	.01	.02	
					W	177.0-193.0	16.0			
					210	193.0-195.0	2.0	.02	.02	
					211	195.0-197.0	2.0	.12	.18	
					212	197.0-199.0	2.0	.08	.21	
					213	199.0-200.8	1.8	.07	.36	
					214	200.8-201.9	1.1	.03	.02	
					W	201.9-216.8	14.9			
					215	216.8-219.0	2.2	.04	.02	
					216	219.0-221.0	2.0	.03	.02	
					W	221.0-227.0	6.0			
END OF HOLE										

* For features such as foliation, bedding, schistosity, measured from the long axis of the core.



THE MINING ACT - DEPARTMENT OF MINES
DIAMOND DRILLING LOG

Start a new page for every new hole, but fill in top portion of form only on first page for each hole.

FILL IN ON EVERY PAGE

HOLE NO. SFO 18 PAGE NO. 1

DRILLING COMPANY CANADIAN LONGYEAR		COLLAR ELEVATION	PLACING OF HOLE FROM TRUE NORTH 2° E	TOTAL FOOTAGE 213'	DIP OF HOLE AT collar -50	LOCATION OF HOLE IN RELATION TO A FIXED POINT ON THE CLAIM GRID CO-ORDINATED: 88+00 E 8+15 S AS SHOWN ON PLAN	MAP REFERENCE NO. M-1875 (NTS 52-J-2)	CLAIM NO. PA-245967
DATE HOLE STARTED APRIL 1 1972	DATE COMPLETED APRIL 2 1972	DATE LOGGED APRIL 3 72	LOGGED BY B. McFADDEN		ft		LOCATION (Twp., Lot, Ctn. OR Lat. and Long.) FOURBAY LAKE AREA 00° 54' 30" - 50° 01' 30"	
EXPLORATION CO., OWNER OR OPTIONEE GRANGES EXPLOATION AKTIEBOLAG.		DATE SUBMITTED Oct 3/72	SUBMITTED BY (Signature) <i>B. McFadden</i>		ft		PROPERTY NAME SPDNER MINES & OILS LIMITED OPTION	
					ft			

FOOTAGE FROM TO	ROCK TYPE	DESCRIPTION Colour, grain size, texture, minerals, alteration, etc.	PLANAR FEATURE ANGLE	CORE SPECIMEN FOOTAGE †	YOUR SAMPLE NUMBER	SAMPLE FOOTAGE		SAMPLE LENGTH	ASSAYS *	
						FROM	TO		CU.	Zn.
0.0-22.0	Casing, Boulders & Clay				W	22.0-99.2	77.2			
22.0-99.2	Dark green, coarse-grained, massive, dioritic flow. Core Angles: 57' 42° 80' 43°				217	99.2-102.0	2.8	.07	.60	
99.2-102.0	30% Pyrite, 2% pyrrhotite, trace chalcopyrite.				W	102.0-149.0	47.0			
102.0-139.0	Fine grained, dark green, massive rhyodacite.				218	149.0-154.0	5.0	.13	.65	
139.0-149.0	30% pyrrhotite, 10% graphite, trace chalcopyrite				219	154.0-154.6	0.6	.29	.52	
149.0-154.0	20% " " " 3% chalcopyrite				220	154.6-160.0	5.4	.12	.55	
154.0-154.6	20% " 5% "				221	160.0-164.0	4.0	.06	.17	
154.6-160.0	20% " 5% "				222	164.0-166.0	2.0	.06	.31	
160.0-164.0	10% " Trace chalcopyrite				W	166.0-201.0	35.0			
164.0-166.0	15% " 5% graphite, 2% pyrite. Core angle: 185' 43°				L.C.	201.0-203.0	2.0			
166.0-201.0	Lost core 201.0-203.0				W	203.0-212.0	9.0			
201.0-203.0	Lost core 212.0-213.0				L.C.	212.0-213.0	1.0			
203.0-212.0	Core Angle: 235' 45°				W	213.0-243.0	30.0			
212.0-213.0										
213.0-243.0										
END OF HOLE										

* For features such as foliation, bedding, schistosity, measured from the long axis of the core.



THE MINING ACT - DEPARTMENT OF MINES
DIAMOND DRILLING LOG

Start a new page for every new hole, but fill in top portion of form only on first page for each hole.

FILL IN ON EVERY PAGE

HOLE NO. 580 13 PAGE NO. 1

DRILLING COMPANY CANADIAN LONGYEAR		COLLAR ELEVATION	BEARING OF HOLE FROM TRUE NORTH 2° E	TOTAL FOOTAGE 202'	DIP OF HOLE AT COLLAR -50	LOCATION OF HOLE IN RELATION TO A FIXED POINT ON THE CLAIM GRID CO-ORDINATES: 60+00 E 12+50 S AS SHOWN ON PLAN.	MAP REFERENCE NO. M-2872 (N75 52-J-2)	CLAIM NO. FA-249076	
DATE HOLE STARTED APRIL 4, 1972	DATE COMPLETED APRIL 5, 1972	DATE LOGGED APRIL 6, 1972	LOGGED BY B. McFADDEN		ft		LOCATION (Tp., Lot, Con. OR Lat. and Long.) FOURDAY LAKE AREA 50° 55' 15" - 50° 01' 15"		
EXPLORATION CO. OWNER OR OPTIONEE GRANGES EXPLORATION AKTIEBOLAG		DATE SUBMITTED Oct 3/72	SUBMITTED BY (Signature) <i>B. McFadden</i>			ft	PROPERTY NAME SPOONER MINES & OILS LIMITED OPTION.		

FOOTAGE FROM TO	ROCK TYPE	DESCRIPTION Colour, grain size, texture, minerals, alteration, etc.	PLANAR FEATURE ANGLE	CORE SPECIMEN FOOTAGE †	YOUR SAMPLE NUMBER	SAMPLE FOOTAGE		SAMPLE LENGTH	ASSAYS †	
						FROM	TO		CU.	Zn.
0.0-20.0	Clay. (Casing)				W	20.0-	86.8	66.8		
20.0-172.0	Coarse-grained, dark green, massive dioritic flow. Narrow sections rhyodacite.				223	86.8-	88.7	1.9	.02	.02
	86.8 - 88.7 Trace pyrrhotite, speck chalcopyrite				W	88.7-	92.8	4.1		
	92.8 - 93.0 " " " "				224	92.8-	93.1	0.3	.02	.02
	93.1 - 202.0 " " " "				W	93.1-	202.0	108.9		
172.0-200.0	Fine grained, dark green, massive rhyodacite. Lost core: 174 - 175.6									
200.0-202.0	Coarse grained, dark green, massive dioritic flow.									
END OF HOLE										

† For features such as foliation, bedding, etc., measure from the top axis of the core.



THE MINING ACT - DEPARTMENT OF MINES
DIAMOND DRILLING LOG

Start a new page for every new hole, but fill in top portion of form only on first page for each hole.

FILL IN ON EVERY PAGE

HOLE NO.	PAGE NO.
500 20	1

DRILLING COMPANY CANADIAN LONGYEAR		WELL OR ELEVATION	DIP ANGLE OF HOLE FROM TRUE NORTH 2° E	TOTAL FOOTAGE 65'	DIP OF HOLE AT collar -50°	LOCATION OF HOLE IN RELATION TO A FIXED POINT ON THE CLAIM	MAP REFERENCE NO. M-2875 (NTS 52-J-2)	CLAIM NO. PA - 215576
DATE HOLE STARTED APRIL 5 1972	DATE COMPLETED APRIL 5 1972	DATE LOGGED APRIL 6 1972	LOGGED BY D. McFADDEN.			GRID CO-ORDINATES: 60+00E 12+00S AS SHOWN ON PLAN	LOCATION (Tp., Lot, Con. OR Lat. and Long.) FOURDAY LAKE AREA 50° 55' 15" - 50° 01' 15"	
EXPLORATION CO., OWNER OR OPTIONEE GRANGES EXPLORATION AKTIEBOLAG.		DATE SUBMITTED Oct 3/72	SUBMITTED BY (Signature) <i>[Signature]</i>				PROPERTY NAME SPOONER MINES & OILS LIMITED CO. LTD.	

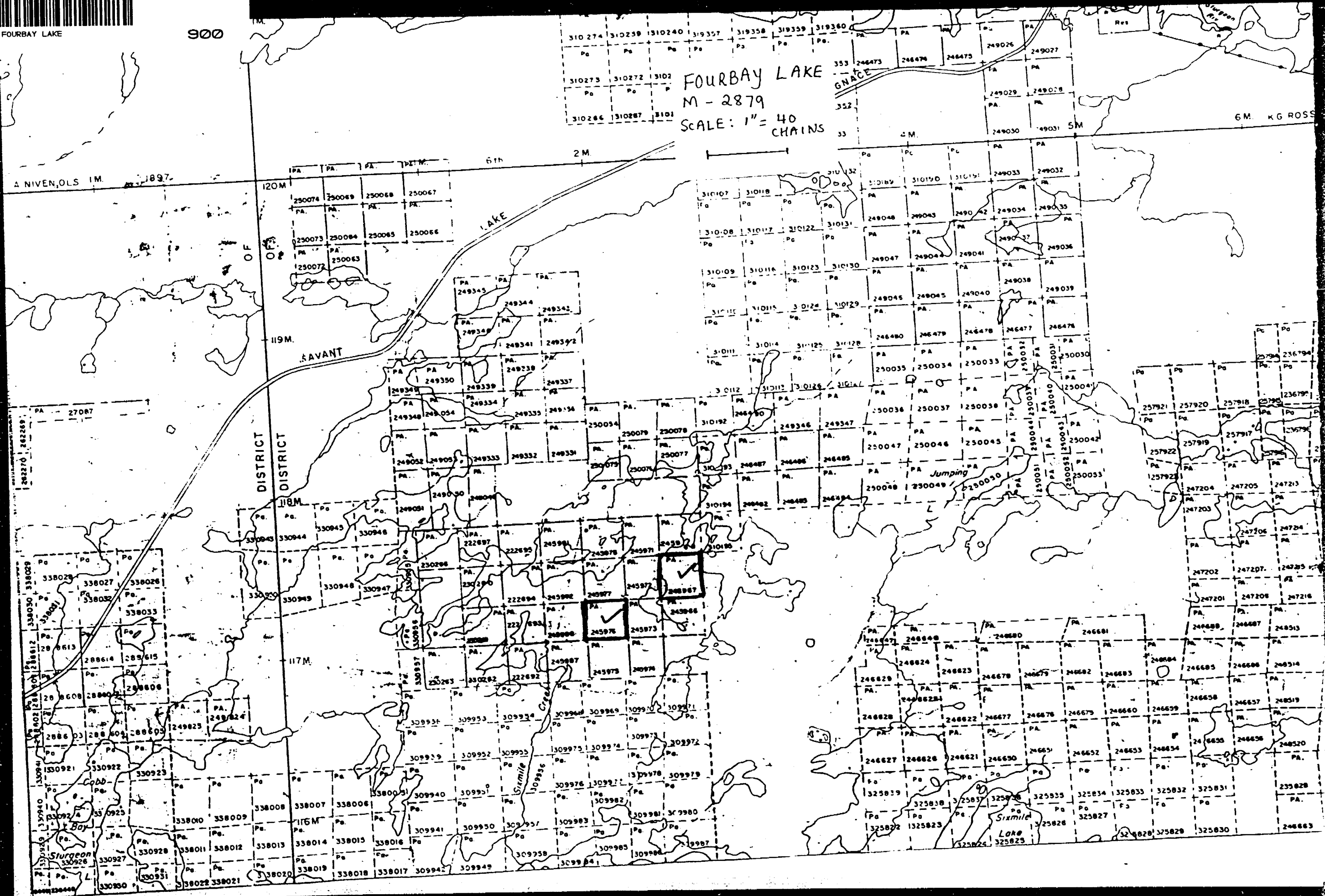
FOOTAGE FROM TO	ROCK TYPE	DESCRIPTION Colour, grain size, texture, minerals, alteration, etc.	PLANAR FEATURE ANGLE	CORE SPECIMEN FOOTAGE	YOUR SAMPLE NUMBER	SAMPLE FOOTAGE		SAMPLE LENGTH	ASSAYS	
						FROM	TO			
0.0- 6.0	Casing, Clay									
6.0- 65.0	Course-grained, dark green, massive dioritic flow									
9.0-10.0	Water stained, rusty									
12.0 -12.6	" "									
16.0 -16.2	" "	speck pyrrhotite								
40.7 -41.0	" "	" "								
END OF HOLE										



52J02SW8696 19 FOURBAY LAKE

900

FOURBAY LAKE
M-2879
SCALE: 1" = 40 CHAINS



A NIVEN, OLS IM. 1897.

6 M. K G ROSS

DISTRICT
DISTRICT

Jumping

Sixmile
Lake

24597
24597
24597

24597
24597
24597

24597
24597
24597

24597
24597
24597

24597
24597
24597

24597
24597
24597

24597
24597
24597

24597
24597
24597

24597
24597
24597

24597
24597
24597

EJ Stevens

FOUR BAY LAKE
M-2879

SCHEMATIC LAKE 52J/02SW (16)
M-2877

ONTARIO

THE MINING ACT REPORT OF WORK

A separate form is required for each type of work to be recorded.

272

To the Recorder of.....PATRICIA.....Mining Division
I, (George Zbitnoff, Agent for) Spencer Mines and Co. Ltd., 7207
name of Recorded Holder Miner's Licence
607 - 80 Richmond Street West, Toronto, Ontario,
Post Office Address

do hereby report the performance of1,041..... days ofDiamond Drilling.....
type of work

not before reported to be applied on the following contiguous claims

Claim No.	Days	Claim No.	Days	Claim No.	Days
See attached list					

All the work was performed on Mining Claim (s)PA245976, PA245967.....
(In the case of geological and/or geophysical survey (s) where more than 18 claims are involved attach a schedule)

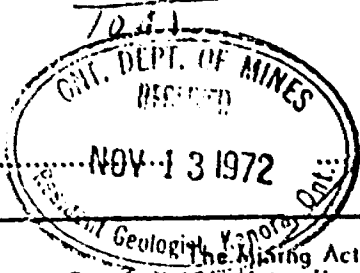
READ CAREFULLY: THE FOLLOWING INFORMATION IS REQUIRED BY THE MINING RECORDER.

- For Manual Work, Stripping or Opening up of Mines, Sinking Shafts or Other Actual Mining Operations - Names and addresses of the men who performed the work and the dates and hours of their employment.
- For Diamond and other Core Drilling - Footage, No. and angle of holes and diameter of core. Name and address of owner or operator of drill. Dates when drilling was done. Signed core log and sketch in duplicate.
- For Compressed Air or Other Power Driven or Mechanical Equipment
Type of drill or equipment. Names and addresses of men engaged in operating equipment and the dates and hours of their employment.
- For Power Stripping - Type of equipment. Name and address of owner or operator. Amount expended. Dates on which work was done. Proof of actual cost must be submitted within 30 days of recording.
- With each of the above types of work sketches are required to show the location and extent of the work in relation to the nearest claim post. In the case of diamond or other core drilling the sketch must be submitted in duplicate.
- For Geophysical, Geological, Geochemical Surveys and Expenditure Credits - the name of author of report. Covering dates of survey (linocutting & office). Type of instrument used. Total amount of expenditure. Technical reports, maps, expenditure breakdown, receipts must be filed in duplicate with the Minister within 60 days of recording.
- For Land Survey - the name and address of Ontario Land surveyor.

The Required Information is as Follows: (Attach a list if this space is insufficient)

Hole	Angle	Diameter	Footage	Name & Address, Contractor	Dates
SPO 16	-50°	1 5/8"	304'	Canadian Longyear, Ltd.	Mar.27-29/72
17	-50°	1 5/8"	227'	North Bay, Ontario.	Mar.30-31/72
18	-50°	1 5/8"	243'	" "	Apr. 1- 2/72
19	-50°	1 5/8"	202'	" "	Apr. 4- 5/72
20	-50°	1 5/8"	165'	" "	Apr. 5- 5/72

DateOctober 16/72.....



Signature of Recorded Holder or Agent

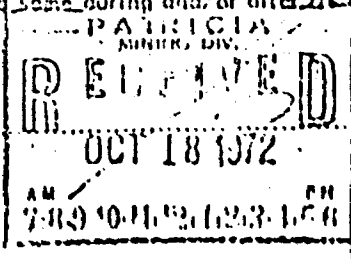
Certified Verifying Report of Work

I, George Zbitnoff,
.....1060.....1055 West Hastings Street, Vancouver 1, B.C.,
(Post Office Address)

heroby certify:

1. That I have a personal and intimate knowledge of the facts set forth in the report of work annexed here-to, having performed the work or witnessed same during and/or after its completion.
2. That the annexed report is true.

Dated.....October 16.....19 72.....



Signature

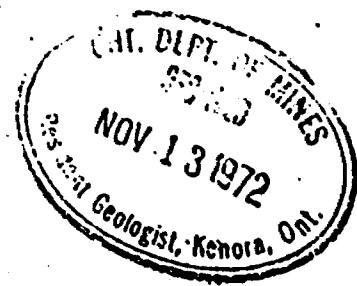
THE PENALTY FOR MAKING A FALSE STATEMENT IN THIS REPORT AND/OR CERTIFICATE IS \$500. OR SIX MONTHS IMPRISONMENT OR BOTH

FOURBAY LAKE
M-2879

272

SCHEDULE OF CLAIMS

<u>Claims</u>	<u>Days</u>	<u>Claim</u>	<u>Days</u>
PA222692	40	222693	40
222694	40	222695	40
222697	40	230260	40
230261	40	230262	40
230263	40	230266	40
245966	40	245967	40
245968	40	245971	40
245972	40	245973	40
245974	40	245975	40
245976	40	245977	40
245978	40	245981	40
245982	40	245986	40
245988 87	40		

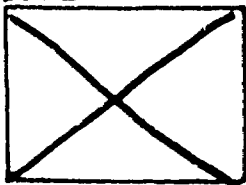




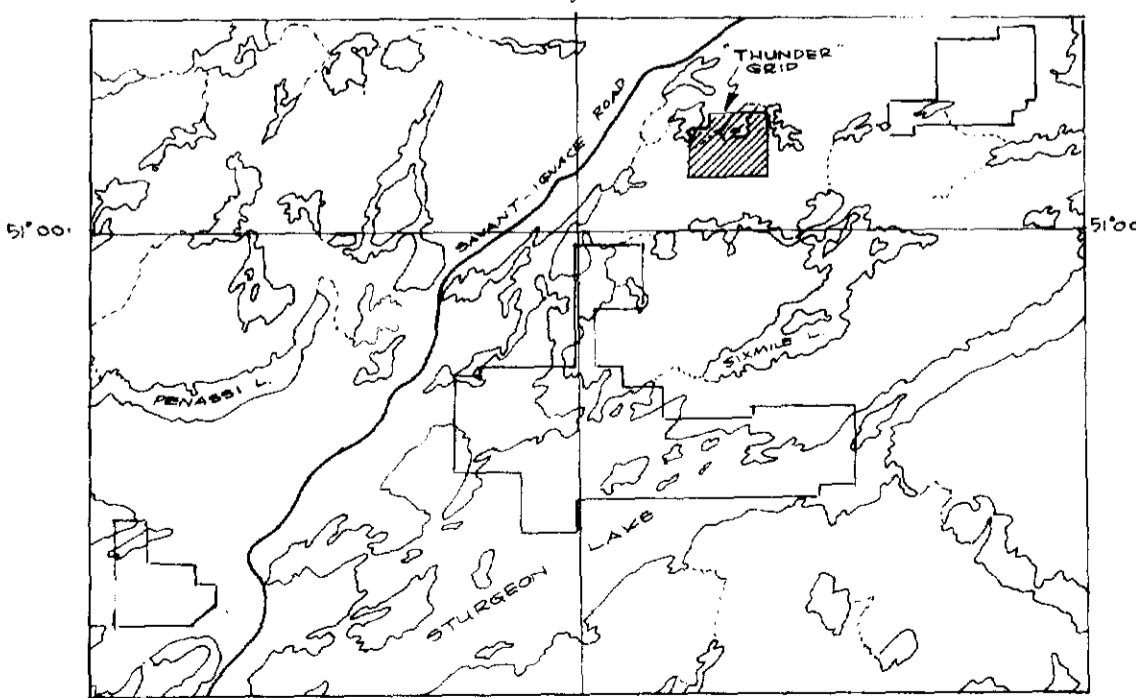
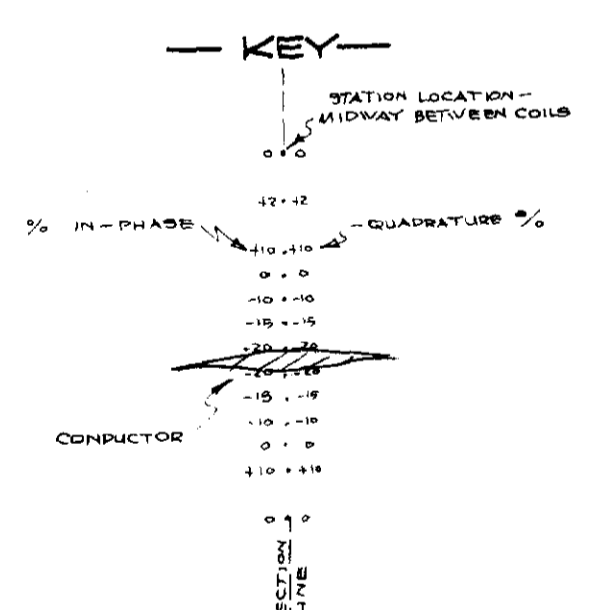
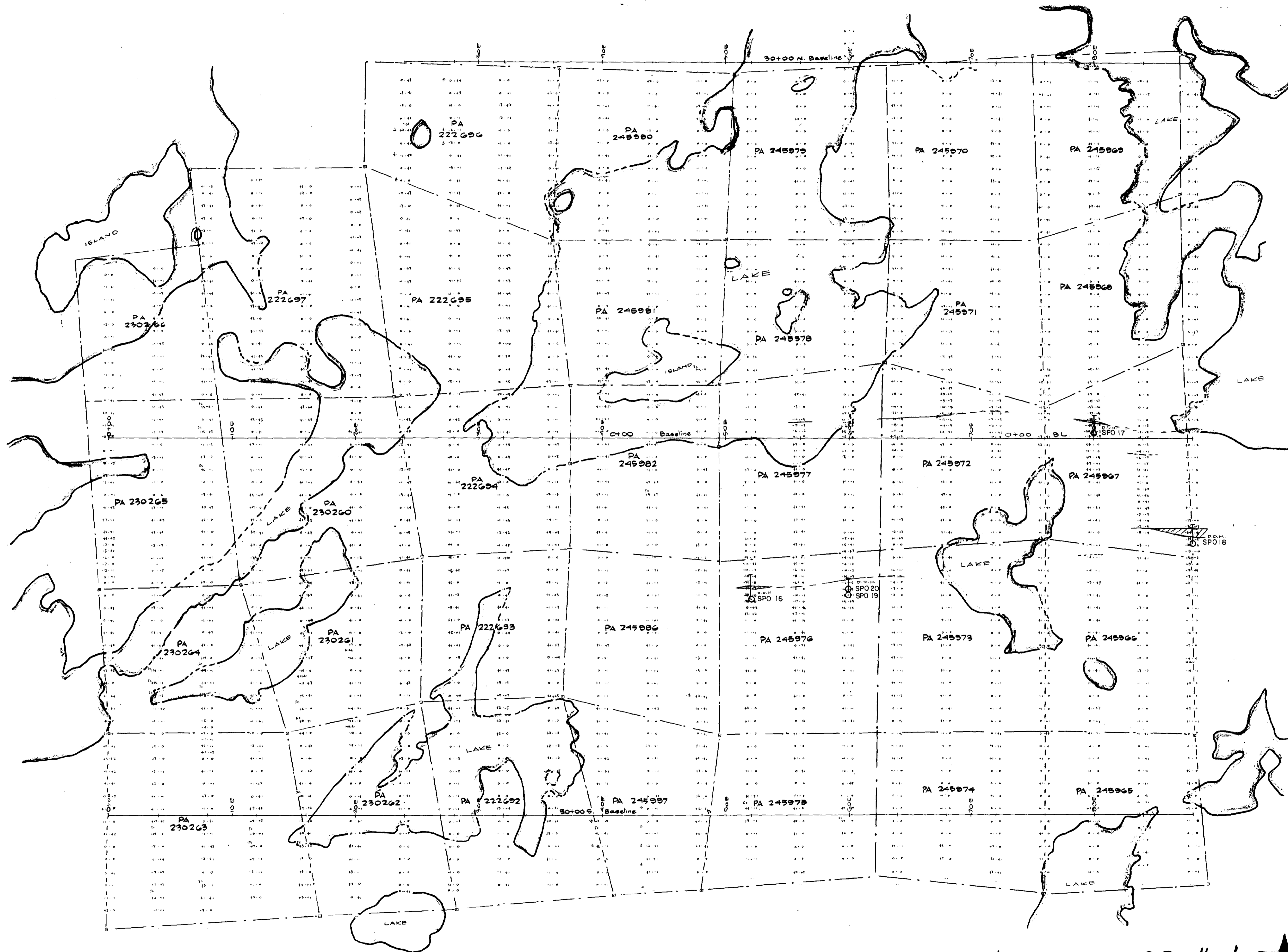
SEE ACCOMPANYING
MAP(S) IDENTIFIED AS

52J/02 SW-0027 # 1

LOCATED IN THE MAP
CHANNEL IN THE
FOLLOWING SEQUENCE

(X)

		
---	--	---



DETAILS OF WORK BEING SUBMITTED
IN AREA OUTLINED:

LINECUTTING: SEC LINE : 27.0 MILES
BASE LINE : 3.2 MILES
TOTAL : 30.2 MILES

E.M. SURVEY : 27.0 MILES
NO. OF STATIONS : 150
NO. OF READINGS : 2050

SUPERVISED BY : (G. ZBITNOFF)

52J/02 SW - 0027 # 1 ★

SURVEYED BY: Geo. LAWSON & J. BEAR DEC 13, 1971 TO JAN 23, 1972	DRAWN BY: M.P.
OPERATING FREQUENCY: 880 Hz. COIL SPACING: 300 FEET	DATE: JAN - 1972
DEFINITE CONDUCTOR WEAK CONDUCTIVE TREND	MILES SURVEYED: 27.0

GRANGES EXPLORATION AB
CANADIAN DIVISION
VANCOUVER OFFICE

HORIZONTAL LOOP E.M. SURVEY
SPOONER MINES AND OILS LIMITED OPTION
"THUNDER" GRIP (CLAIM MAP N.M. 2879)
FOURBAY LAKE AREA

SCALE: 1" = 400'
PROJECT No.: E-301
NTS No.: E-301



Fourbay Lake #19
#27 Patricia