



52J04NE0032 52J04NE0011C1 SHARRON LAKE

010

Diamond Drilling

Area of Sharron Lake

Report NO 11

Work performed by: W.H. Thompson

Claim NO	Hole NO	Footage	Date	Note
Pa. 33336	64-1	72'	1964	
	64-2	53'	1964	
	65-2	165.5'	Sept/65	
(restaked as Pa. 44954	R-1	195'	May/71	(1)
Pa. 44957	R-2	198'	May/71	(1)
Pa. 44955	1-72	101'	Aug/72	(2)
	1-73	151'	Feb/73	(2)
	2-73	152'	Feb/73	(2)
Pa. 44956	3-73	130'	Mar/73	(2)
	4-73	214'	Mar/73	(2)

TOTAL: 10 DH 1432 FT.

Notes:

- (1) 278/71-Asarco Expl. option
- (2) 65/73

D.D.H. No. 64-1

Drilled on Claim No. Pa-33336

Angle 50

Diameter of core 7/8 " EX

Direction N-50-W

Depth of Hole 72 feet

0' - 8' Overburden

8' - 72' Chlorite and sericite schists with appreciable amounts of carbonate. Some narrow quartz veins with fine grained pyrite, chalcopyrite and galena.

Drilled by W.M.Thompson

Logged by R.J.MoCombe BSo.

Robert J. MoCombe
Robert J. MoCombe, B.So.

D.D.H. No 64-2

Drilled on Claim No. Pa-33336

Angle 50

Diameter of core 7/8 " EX

Direction N-50-W

Depth of Hole 53 feet

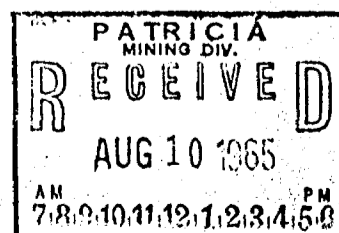
0' - 10' Overburden

10' - 53' Pyrite Chlorite schist with considerable carbonate. Some fine grained pyrite mineralization.

Drilled by W.M.Thompson

Logged by R.J.MoCombe B.So.

Robert J. MoCombe
Robert J. MoCombe, B.So.



D.D.H. No. 65-1

Drilled on Claim No. 33336

Angle 40

Depth of Hole 140 ft plus

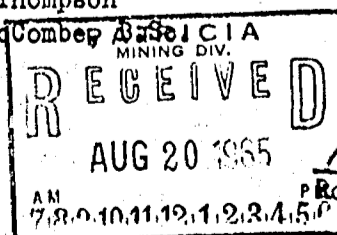
Direction N-57-W

Diameter of core 7/8"

02 - 8.0' Casing
8.0 - 29.0 Sheared andesite feldspar porphyry. Some chlorite and carbonate with a little irregular quartz and some very sparse chalcopyrite mineralization.
29.0 - 30.7 Gray quartz. Some very grained pyrite, pyrrhotite and chalco. Irregular contact to core at app. 30
30.7 - 33.5 Sheared andesite feldspar porphyry
33.5 - 34.3 Gray quartz. Some fine gr. mineralization.
34.3 - 44.0 Sheared andesite feldspar porphyry.
44.0 - 45.7 Quartz-carbonate vein. Sparse mineralization in pyrite, pyrrhotite and chalco.
45.7 - 49.2 Silicious volcanic breccia
49.2 - 51.2 As above: some fine gr. mineralization.
51.2 - 61.4 Medium to fine gr. volcanic breccia
61.4 - 65.0 Rhyolite
65.0 - 67.0 Volcanic breccia
67.0 - 67.8 - Rusty quartz carbonate in chlorite schist
67.8 - 72.4 Volcanic breccia schisted and varying in silicification
72.4 - 74.3 Highly silicious volcanic breccia
74.3 - 88.2 Chlorite schist
88.2 - 90.0 Very silicious chlorite schist. Some fine gr. mineralization.
90.0 - 93.4 Quartz vein with some inclusions of schist. Well mineralized in galena and chalcopyrite
93.4 - 95.8 Silicious chlorite schist
95.8 - 96.5 Quartz vein. Some pyrite, chalcopyrite and galena
96.5 - 97.9 Silicious chlorite schist
97.9 - 98.6 Quartz vein. Some pyrite, chalcopyrite and galena.
98.6 - ~~98.0~~^{152.0} Silicious chlorite schist.

Drilled by W.M.Thompson

Logged by R.J.McCombe



Robert McCombe
Robert McCombe, B.Sc

D.D.H. No. 65-2

Angle 40

Direction N-57-W

Hole started Sept. 27th/65

Drilled on Claim No. 3331


Depth of Hole 165.5 feet

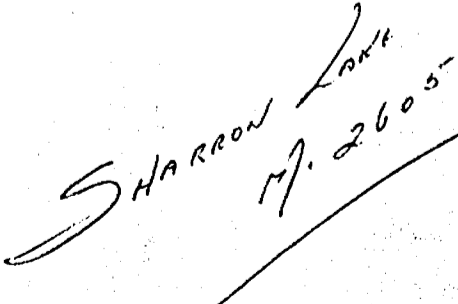
Diameter of core 7/8"

Hole finished Sept. 29th/65

0.0 - 9.7	Casing
9.7 - 30.6	Sheared andesite feldspar porphyry with considerable banded carbonate.
30.6 - 45.2	Fine grained rhyolite breccia. Some sparse mineralization.
45.2 - 65.7	Sheared andesite feldspar porphyry - considerable carbonate
65.8 - 69.00	Very silicious fine gr. breccia. A few specs of moly at 68.6'
69.0 - 85.8	Sheared rhyolite - carbonate - sparse chalc
85.8 - 88.3	Highly silicious - some fine gr pyrite & pyrrhotite, irregular fractufes.
88.3 - 91.4	Silicious fine gr breccia
91.4 - 99.4	Silicious schist
99.4 - 104.4	Highly silicious breccia - sparse pyrite & pyrrhotite
104.4 - 105.4	Rhyolite
105.4 - 109.6	Sheared rhyolite
109.6 - 116.7	Rhyolite - sparse scattered pyrite
116.7 - 119.8	Silicious schist
119.8 - 123.4	Tuff, gray compact rock
123.4 - 138.7	Silicious schist - sparse scattered pyrite
138.7 - 145.7	Silicious fine gr breccia - scattered pyrite & pyrrhotite
145.7 - 165.5	Chlorite schist

Drilled by W.H.Thompson
Logged by R.J.McCombe, B.Sc.


Robert McCombe, B.Sc.


SHARON LANK
M. 2605

PA-33336

N

PACKET LINE

P.D.H. 65-1

D.D.H. 65-2

No 2 Post.

SCALE 1" = 200'



PROJECT ROSNELL
 Area ROSNELL
 Line OSD Coord. 0440N
 Azimuth 130 Dip -45
 Dip Test 130

ASARCO EXPLORATION COMPANY OF CANADA LTD.
 Suite 840, 20 King St. West, Toronto 1, Ontario
 Drilled by BRADLEY BROTHERS Core AXI
 Started 17 MAY 1971 Finished 18 MAY 1971

D.O.H. R1
 Page 1 of 2 Pages
 Logged by A. PICKERING
 Date 18 MAY 1971
 Sampled by M. PICKERING

Petrographic	Description	Sample number	Mineralization
	OVERBURDEN (SAND)		
	22' → 72.5'		
	PREDOMINANTLY QUARTZ-SERICITE SCHIST.	#7920	24.5 } FEW SPECKS Py. <1% 26.1 } 28.0 } STRONGER Py. 1/4"
	PATCHES OF PURE QUARTZ WHERE INDICATED. IRREGULAR STRINGERS OF SULPHIDES AS SHOWN.	#7921	
	THE ROCK APPEARED TO BE AN ALTERED RHYOLITIC TUFF. IRON CARBONATE IS EVIDENTLY ALONG MANY OF THE S-SURFACES; ESPECIALLY WHERE WEATHERING HAS OCCURRED.	#7922	42.5 } 43.5 } 44.0 } Blebs pyr. cpy <1% 45.5 } 47.5 } STRONGER Py.
	S-SURFACES; ESPECIALLY WHERE WEATHERING HAS OCCURRED.	#7923	50.0 } Occasional Bleb pyr. cpy <1% 52.5 } 53.0 }
	4" QU Minor Chlorite	#7924	57.0 } 2" violet {Si+Ca} 50% total 57.5 } 59.5 } Blebs Py 1/2" <1%
	QU {67.5	#7925	66.0 } Few Blebs py. 67.5 } dissem. py. cpy 1-2%
	Some coarse grained Ca	#7926	70.5 } 72.5 } 73.0 } Blebs, disseminations and Stringers cpy. py. Tennantite 2-3% (cpy. py. Ten)
	72.5 → 84.6' QUARTZ-CARBONATE V. PALE PINKISH COLOUR, MASSIVE TO BRECCIATED. SULPHIDE CONTENT ABOUT 2-3%.	#7927	
	COARSE GRAINED COA	#7928	84.6
	DARK GRAY GREEN FINE-GRAINED	#7929	
	? META AULDESITE POORLY DEVELOPED SCHISTOSITY. MINOR AMOUNTS OF CARBONATE COATING S-SURFACES	#7930	92.0 } 93.0 } Blebs
		#7931	
		#7932	



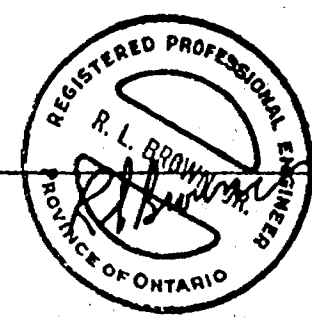
278/71 Sharnon Lake Area
 Asarco Expl. Co. of Canada

PROJECT **BOSNELL**
 Area **ROSELLE**
 Line **105-106**
 Azimuth **116°T** Dip **-45°**
 Dip term **Nil**

ASARCO EXPLORATION COMPANY OF CANADA LTD.
 Suite 840, 20 King St., West, Toronto 1, Ontario
 Drilled by **BOBBLEY BOS** Core AXI
 Started **17 MAY 1971** Finished **18 MAY 1971**

D.D.H. **R1**
 Page **2** of **2** Pages
 Logged by **A. PICKESLEY & B.C.**
 Date **18 MAY 1971**
 Sampled by **A. PICKESLEY**

Petrographic Description	Sample number	Mineralization
SOME PISTACHIO-GREEN CHLORITE 1/25" 1" QU 104.1' 1/2" MIDDLE SULPHIDES 106.2'	7918 7919 7920	102.0' } DISSEMINATED PY. < 1/2 % 102.5' } 104.0' } BLEBS PY. 1/2 % 106.2' } STRINGS ? TENNANTITE 10%
SLIGHTLY SILICIFIED AND THUS A LIGHTER GREY COLOUR THAN THE ABOVE. GRADATIONAL BOUNDARY	7921	
1/8" CO ₃ 117.4'	7926	119.4' BLEBS PY.
1/2" QU 123.0'	7927	123.0' STRINGS ? TENNANTITE 10%
HEAVILY SILICIFIED. VERY POOR SCHISTOSITY. MAINLY BRECCIATED OFTEN WITH QUARTZ FILLING THE SPACES BETWEEN FRAGMENTS. BOUNDARY IS GRADATIONAL. PARTS ARE ALMOST CHERTY.	7928	138.5' } BLEBS AND DISSEMINATIONS OF PY. < 10% 140.0' } 142.0' } FEW BLEBS PY.
SLIGHTLY SILICIFIED, LESS BRECCIATED THAN ROCK IMMEDIATELY ABOVE. SCHISTOSITY POORLY DEVELOPED.	7929	
AS FOR 84.6 → 107.0	7930	
ALTERED ANDESITE MASSIVE TO BRECCIATED	7931	162.0' 1" HEAVILY DISSEM. PY. 40% PY.
	7932	
	7933	
END OF HOLE	7934	



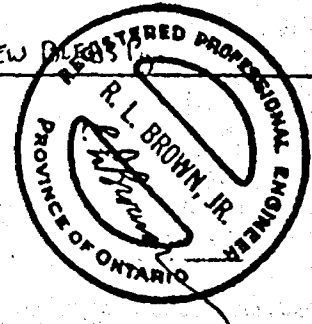
Petrographic Description Sample number Mineralization

0'	OVER BURDEN		
0'	METANDESITE, DARK GREY-GREEN IN COLOUR EXCEPT WHERE BRECCIATED FRAGMENTS HAVE BEEN SURROUNDED IN PINKISH QUARTZ-CARBONATE MATERIAL. SCHISTOSITY VARIES AS SHOWN. CARBONATE FOUND ALONG S-SURFACES AND IS ESPECIALLY NOTICEABLE IN WEATHERED SECTIONS. MINOR SULPHIDES AS SHOWN. THE WHOLE SECTION (3.0 - 80.0) IS CHLORITISED AND CARBONITIZED.	#7934 #7935	← 60' ← 80' MALACHITE STAINING Py. blebs < 1/4 %
20'			← 19.02' QU BARREN
30'		#7936	← 23.5' OCCASIONAL py. Cube ← 27.1' 2" BAND OF Cpy.Py 2% { Cpy/Py } { 1/2 }
32.0'	AS ABOVE BUT SILICIFIED 33.7' 2" CO ₂ Vein Barren	#7937	← 31.5' BLEBS Py. ← 32.0' DISSEM. Py. for 6" < 1/2 % ← 34.6' STRINGER py.
40'	GRADATIONAL BOUNDARY		← 39.2' MINOR DISSEM. Py. < 1/2 %
50'	1/8" CO ₂ Vein 430' 1/8" " " 450' 1/8" " " 480'	#7938	← 42.5' } DISSEM. Py. < 1 % ← 43.0' }
52.0'		#7939	← 56.5' DISSEM. Py. 1" BAND < 1 %
60'	WELL BRECCIATED AND INVADED BY QUARTZ-CARBONATE MATERIAL. COLOUR LIGHT GREY FRAGMENTS SURROUNDED BY PINK Qtz-CO ₂	#7940	← 64.1' STRINGES py.
70'	1/8" CO ₂ 71.0' 1/4" QU Barren 74.0' 1/4" CO ₂ 78.0'	#7941	← 77.0' BLEBS IN BAND.
80.0'	80.0 → 100.2 QUARTZ SERICITE SHIST WITH CARBONATE PROBABLY AN ALTERED RHYOLITIC TUFF. LIGHT GREY COLOUR.	#7942	← 81.2' BLEBS Py. ← 84.0' BLEBS Py.
90'	NUMEROUS CARBONATE VEWLETS. BRECCIATED SOME SCHISTOSITY WHERE INDICATED.	#7943	← 89.0' FEW BLEBS

PROJECT ROSNELL
Area ROSNELL SIDING
Line 4E Coord. 2N
Azimuth 1 Dip 45
Dip Tech NIL

ASARCO EXPLORATION COMPANY OF CANADA LTD.
Suite 840, 20 King St., West, Toronto 1, Ontario
Drilled by BRADLEY BRCS Core AXI
Started 18 MAY 1971 Finished 18 MAY 1971

D.D.H. R2
Page 1 of 2 Pages
Logged by M. KERRICK, R.L.
Date 19 MAY 1971
Sampled by M. KERRICK

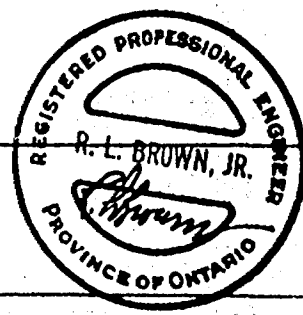


PROJECT: ROSSELL
 Area: ROSSELL SIDING
 Line: 4E Coord. 2N
 Ashmsh. 1 Dip 45
 Dip test 1

ASARCO EXPLORATION COMPANY OF CANADA LTD.
 Suite 840, 20 King St., West, Toronto 1, Ontario
 Drilled by: BRADLEY BROS. Core AXI
 Started 18 MAY 1971 Finished 18 MAY 1971

D.D.H. R2
 Page 2 of 2 Pages
 Logged by: W. G. GIBSON
 Date: 19 MAY 1971
 Sample by: H. KERRAS

Petrographic Description	Sample number	Mineralization
100.2' - 107.5' CO ₂ VEIN. PINK IN COLOUR. WELL SHEARED, SPECKLED APPEARANCE	#7944	100.2' 1/2" STRINGS Py. 101.0' BLEBS Py. 102.0' 2 STRINGS Py. 103.0' } 104.0' } STRINGS + DISSEM Py. cpy. 1% Q: 10'
107.5' - 127.0' SCHISTIZED CARBONATISED. META-ANDESITE. CHLORITISED.	#7945	107.4' BLACK METALLIC PATCHES IN QTz 6' ? TENNANTITE 60% of Rock
127.0' - 128.0' Qtz - CO ₂ Vein	#7946	< 1% py.
128.0' - 133.0' ANDESITE AS FOR 107.5 - 127.0	#7947	133.0' 137.5' 10% Py/cpy 70:30
133.0' - 137.5' Qtz - CO ₂ Vein	#7948	142.0' 1/2" py. Vein 40% py.
137.5' - 148.0' ANDESITE AS FOR 107.5 - 127.0 WELL CARBONATIZED (25% OF ROCK IS CARBONATE) ALONG S-SURFACES AND IN BRECCIATED PARTS.	#7949	
148.0' - 159.0' 1/8" CO ₂	#7950	
159.0' - 169.0' SILICIFIED SECTION REULDAR GRANITIC APPRECIABLE CHLORITE DEVELOPMENT	#7951	169.0' BLEBS ? NICCOLITE < 1/4%
169.0' - 177.0' 1/8" CO ₂	#7952	
177.0' - 185.9' 1/8" CO ₂	#7953	
185.9' - 190.3' 1/8" CO ₂		
190.3' - 195.0' 1/8" CO ₂		
195.0' - 198.0' END OF HOLE		



12W LBW L4W LO L4E L8E L12E L16E L20E L24E L28E

PA 261643

PA 44955

BOTSFORD LAKE

PA 44956

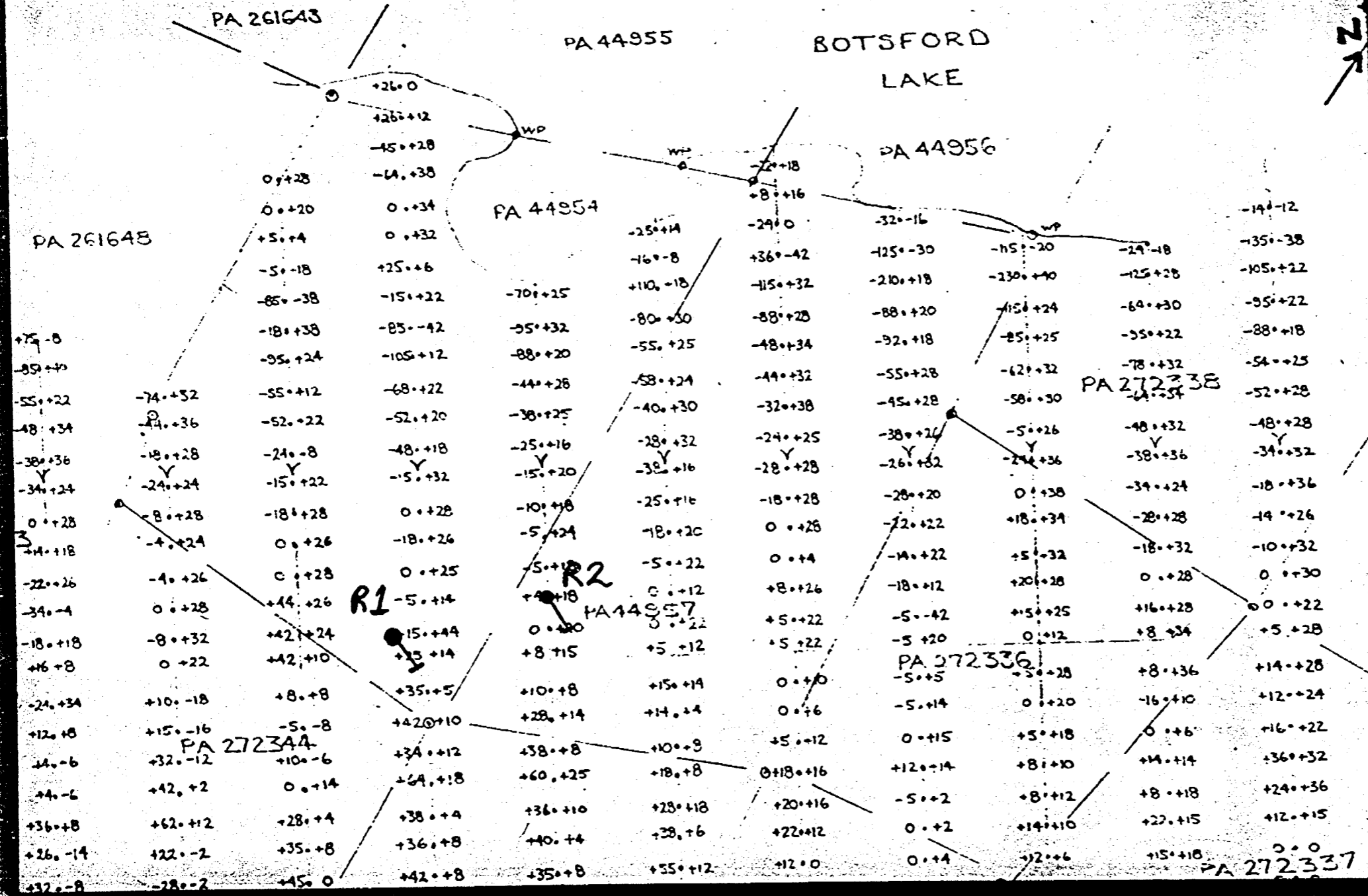
PA 261648

PA 44954

PA 272338

PA 272336

PA 272337



R1

R2

PA 272344

PA 44957



THE MINING ACT - DEPARTMENT OF MINES
DIAMOND DRILLING LOG

Start a new page for every new hole, but fill in top portion of form only on first page for each hole.

FILL IN ON EVERY PAGE

MOLE NO. 1-72 PAGE NO.

DRILLING COMPANY W THOMPSON PROSPECTOR	COLLAR ELEVATION 12"	BEARING OF HOLE FROM TRUE NORTH	TOTAL FOOTAGE 101'	DIP OF HOLE AT COLLAR 45°	LOCATION OF HOLE IN RELATION TO A FIXED POINT ON THE CLAIM 44955 NO 2 POST 100 FT WEST ON THE SHORE. DRILLING 15 WEST OF NORTH	MAP REFERENCE NO.	CLAIM NO.
DATE HOLE STARTED 5 AUG 1972	DATE COMPLETED AUG 12 - 1972	DATE LOGGED 12 AUG 72	LOGGED BY W THOMPSON	ft	LOCATION (T _p , Lot, Con. OR Lat. and Long.) SHARRON LAKE MAP ON BOTS FORD LAKE	PROPERTY NAME	
EXPLORATION CO., OWNER OR OPTIONEE BETHAM J. LEE N. THOMPSON W.		DATE SUBMITTED 30 MARCH '73	SUBMITTED BY (Signature) <i>W Thompson</i>	ft			
				ft			
				ft			

FOOTAGE		ROCK TYPE	DESCRIPTION Colour, grain size, texture, minerals, alteration, etc.	PLANAR FEATURE ANGLE -	CORE SPECIMEN FOOTAGE +	YOUR SAMPLE NUMBER	SAMPLE FOOTAGE		SAMPLE LENGTH	ASSAYS +	
FROM	TO						FROM	TO			
0	54	CASING	CASING								
54	60	ANDESITE	GREENSTONE FINE GRAINED SLATEY BROKEN SPARCE MINERAL.								
60	75	ANDESITE	GREENSTONE FINE GRAINED SLATEY TEXTURE 6" QTZ STRINGER 613-62								
75	101	ANDESITE	GREENSTONE FINE GRAINED SLATEY SPARCE MINERALIZATION THROUGHOUT THE HOLE "PIRITE ??". NO VALUES.								
0	54	Casing	Casing								
54	60	Andesite	Greenstone fine grained slatey broken sparce mineral.								
60	75	Andesite	Greenstone fine grained slatey texture 6" qtz stringer 613-62								
75	101	Andesite	Greenstone fine grained slatey sparce mineralization throughout the hole "pirite ??". no values.								

W Thompson
 65-73
 1973

PATRICIA
 MINING DIV.
RECEIVED
 MAR 30 1973
 7:09 PM
 21123458

NORTH ↑

DRILLED BY W THOMPSON
D.D HOLE NO 1-RT2
101 FT DEEP 100 FT WEST
NO 2 POST ON
SHORE OUT INTO LAKE
15° WEST OF NORTH.

PA 44955

PA 44954

D.D HOLE NO 1-72
100' FT WEST
OF NO 2 POST

BOTSFORD
LAKE

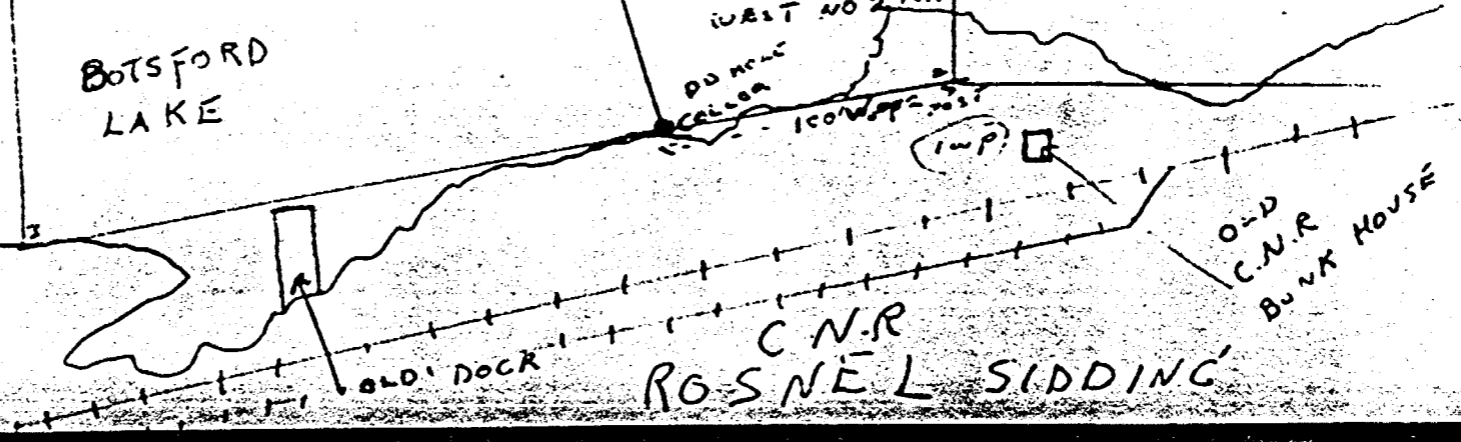
W Thompson

BOTSFORD
LAKE

15° WEST OF NORTH
100' WEST NO 2 POST

D.D HOLE
CALLER

100' WEST NO 2 POST



OLD DOCK

C.N.R.
ROSNEL SIDING

OLD
C.N.R.
BUNK HOUSE



THE MINING ACT - DEPARTMENT OF MINES
DIAMOND DRILLING LOG

Start a new page for every new hole, but fill in top portion of form only on first page for each hole.

FILL IN ON EVERY PAGE

HOLE NO. 1 PAGE NO. 1
1973-005

DRILLING CC NY W. THOMPSON PROSPECTOR	COLLAR ELEVATION 8"	BEARING OF HOLE FROM TRUE NORTH 15° EAST	TOTAL FOOTAGE 151	DIP OF HOLE AT collar 45°	LOCATION OF HOLE IN RELATION TO A FIXED POINT ON THE CLAIM CLAIM 44955 NO 3 POST 40 FT EAST 50 FT NORTH ON LAKE ICE	MAP REFERENCE NO. CLAIM NO. 44955
DATE HOLE STARTED FEB 3 - 1973	DATE COMPLETED FEB 11 - 1973	DATE LOGGED MAR 28-73	LOGGED BY W THOMPSON	ft	LOCATION (Tp., Lot, Con. OR Lat. and Long.) SHARON LAKE MAP ON BOTSFORD LAKE	PROPERTY NAME ROSNEL
EXPLORATION CO., OWNER OR OPTIONEE BOTHAM J. LEE N. THOMPSON W.	DATE SUBMITTED 30 MARCH 73	SUBMITTED BY (Signature) <i>W. Thompson</i>	ft	ft		
			ft	ft		
			ft	ft		

FOOTAGE		ROCK TYPE	DESCRIPTION Colour, grain size, texture, minerals, alteration, etc.	PLANAR FEATURE ANGLE	CORE SPECIMEN FOOTAGE +	YOUR SAMPLE NUMBER	SAMPLE FOOTAGE		SAMPLE LENGTH	ASSAYS
FROM	TO						FROM	TO		
0	14	CASING	CASING							
14	25	ANDESITE	GREY GREEN FINE NO MINERAL NO ALTERATION							
25	50	ANDESITE	GREY GREEN FINE GRAINED SPARSE PYRITE NO ALTERATION							
50	75	ANDESITE	GREY GREEN FINE GRAINED SPARSE PYRITE SLATY, BROKEN							
75	100	ANDESITE	GREY GREEN FINE GRAINED QUARTZ STRINGERS SPARSE PYRITE NO ALTERATION							
100	125	ANDESITE	GREY GREEN FINE GRAINED SPARSE PYRITE NO ALTERATION							
125	151	ANDESITE	GREY GREEN FINE GRAINED SPARSE PYRITE NO ALTERATION							NO ASSAYS TAKEN

0	14	Casing	Casing							
14	25	Andesite	Grey green fine no mineral no alteration							
25	50	Andesite	Grey green fine grained sparce pyrite no alteration							
50	75	Andesite	Grey green fine grained sparce pyrite slaty broken.							
75-	100	Andesite	Grey Green fine grained quartz stringers sparce pyrite no alteration							
100	125	Andesite	Grey green fine grained sparce-pyrite no alteration							
125	151	Andesite	Grey green fine grained sparce-pyrite no alterations							no assays TAKEN

PATRICIA
MINING DIV.
RECEIVED
MAR 30 1973
AM 7:8 9:00 10:15 11:23 1:58 PM

NORTH

PA 44955

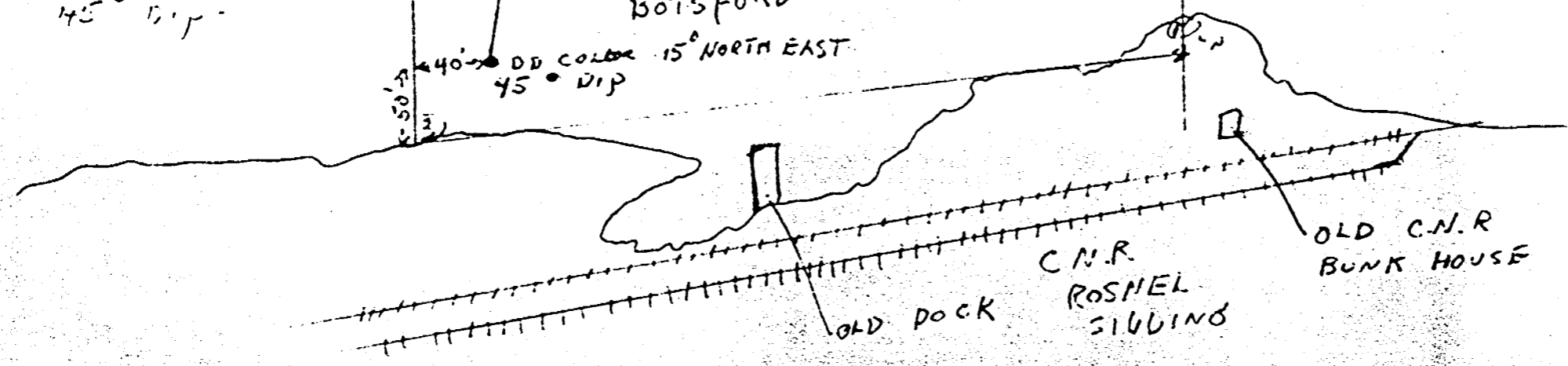
TIBON
CLAIM
44956

DRILLED BY
W THOMPSON
DID NO 1 1973
40 FT EAST OF NO 3 POST
50 FT NORTH IN LAKE
TO THE OLD COLLAR
45° DIP

HOLE 1 1973
45° ANGLE
40 FT EAST OF NO 3 POST
50 FT NORTH TO COLLAR

BOTS FORD LAKE

40' DD COLLAR 15° NORTH EAST
45° DIP



OLD DOCK

C.N.R.
ROSMEL
SIDING

OLD C.N.R.
BUNK HOUSE



THE MINING ACT - DEPARTMENT OF MINES
DIAMOND DRILLING LOG

Start a new page for every new hole, but fill in top portion of form only on first page for each hole.

FILL IN ON EVERY PAGE

HOLE NO. 273 PAGE NO. 1

DRILLING COMPANY W Thompson	DRILLER PROSPECTOR	COLLAR ELEVATION 6"	BEARING OF HOLE FROM TRUE NORTH 15° EAST	TOTAL FOOTAGE 152	DIP OF HOLE AT COLLAR 56°	LOCATION OF HOLE IN RELATION TO A FIXED POINT ON THE CLAIM 44955 NO 3 POST. 40 FT EAST SOFT NORTH ON LAKE ICE	MAP REFERENCE NO.	CLAIM NO. 44955
DATE HOLE STARTED 11 FEB 1973	DATE COMPLETED 25 FEB 1973	DATE LOGGED 28 MAR 73	LOGGED BY W THOMPSON				LOCATION (Tp., Lot, Con. OR Lot. and Long.) SHARRON LAKE MAP ON BOTS FORD LAKE	
EXPLORATION CO., OWNER OR OPTIONEE BOHMAN J. LEE N. THOMPSON W.		DATE SUBMITTED 30 MARCH 73	SUBMITTED BY (Signature) <i>W Thompson</i>				PROPERTY NAME	

FOOTAGE		ROCK TYPE	DESCRIPTION	PLANAR FEATURE ANGLE	CORE SPECIMEN FOOTAGE	YOUR SAMPLE NUMBER	SAMPLE FOOTAGE		SAMPLE LENGTH	ASSAYS +	
FROM	TO		Colour, grain size, texture, minerals, alteration, etc.				FROM	TO			
0	11	CASEING	CASEING 11 FT. FROM SAME SET UP OF HOLE #1								
11	25	ANDESITE	GREY GREEN, FINE BROKEN NO MINERAL NO ALTERATION								
25	50	ANDESITE	GREY GREEN, FINE BROKEN SPARCE IRON PYRITE NO ALTERATION								
50	75	ANDESITE	GREY GREEN, FINE GRAINED SPARCE PYRITE NO ALTERATION								
75	100	ANDESITE	GREY GREEN, FINE GRAINED SPARCE PYRITE FINE QTZ STRINGER								
100	125	ANDESITE	GREY GREEN, FINE GRAINED SPARCE PYRITE NO ALTERATION								
125	152	ANDESITE	GREY GREEN, FINE GRAINED SPARCE PYRITE NO ALTERATION THIS ANOMALY WAS PICKED UP USING A EM 16 ARONKA V.L.F. INSTRUMENT. NO ANOMALYS, PROBABLY SHORE LINE ECHO.								
0	11	Casing	Casing 11 ft. from same set up of Hole #1								
11	25	Andesite	Grey green fine broken no mineral no alteration								
25	50	Andesite	Grey green fine broken sparce iron pyrite no alteration								
50	75	Andesite	Grey green, fine grained sparce pyrite no alteration								
75	100	Andesite	Grey green fine grained sparce pyrite fine qtz stringer								
100	125	Adnesite	Grey green fine grained sparce pyrite no alteration								
125	152	Andesite	Grey green fine grained sparce pyrite no alterations This anomaly was picked up using a EM 16 aronka V.L.F. instrument. No anomalys, probablty shore line ECHO								

PATRICIA
MINING DIV.
RECEIVED
MAR 30 1973
7:39:01 PM
739-0112123458



DRILLED BY
W THOMPSON

PA 44955

BOTS FORD LAKE

TIE OF
CHAIN
44956

HOLE NO 2 1973
55° ANGLE
40 FT EAST OF NO 3 POST
50 FT NORTH TO COLLAR
FROM SAME SET UP AS
NO 1 HOLE 73

BOTS FORD
LAKE

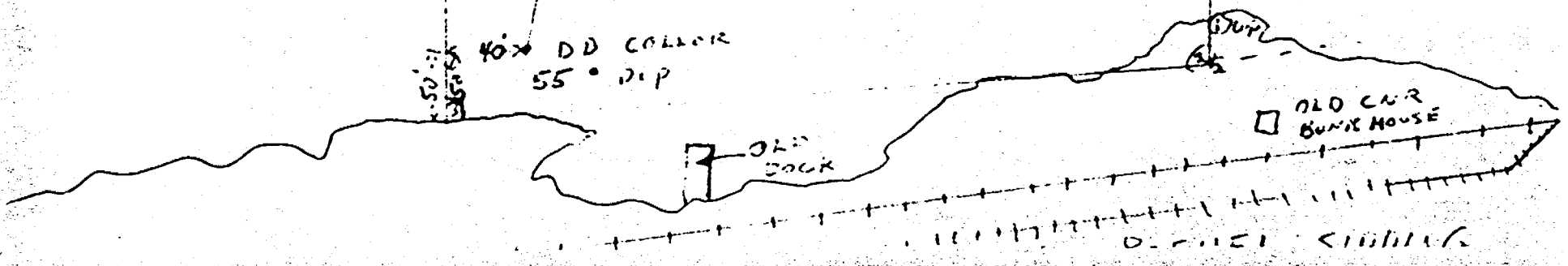
BOTS FORD
LAKE

10x DD COLLAR
55° DIP

OLD
DOCK

OLD CAR
BUNK HOUSE

OLD FENCE





THE MINING ACT - DEPARTMENT OF MINES
DIAMOND DRILLING LOG

Start a new page for every new hole, but fill in top portion of form only on first page for each hole.

FILL IN ON EVERY PAGE

HOLE NO. **3-73** PAGE NO.

DRILLING CL. ANY W THOMPSON PROSPECTOR	COLLAR ELEVATION 10 "	BEARING OF HOLE FROM TRUE NORTH 15 W	TOTAL FOOTAGE 130	DIP OF HOLE AT COLLAR 45°	LOCATION OF HOLE IN RELATION TO A FIXED POINT ON THE CLAIM NO 4 WP POST 44956 175 FT NORTH OF 44956 15° WEST	MAP REFERENCE NO.	CLAIM NO. 44955
DATE HOLE STARTED 17 MARCH 1973	DATE COMPLETED 23 MARCH 1973	DATE LOGGED 30 MARCH 73	LOGGED BY W THOMPSON	ft	LOCATION (T.P., Loc, Con. OR Lat. and Long.) SHARON LAKE MAP ON BOTSFORD LAKE	PROPERTY NAME	
EXPLORATION CO., OWNER OR OPTIONEE	DATE SUBMITTED	LOGGING NOT COMPLETED	SUBMITTED BY (Signature) <i>W Thompson</i>	ft			
BETHAN J. LEE N. THOMPSON W	30 MARCH 73			ft			
				ft			

FOOTAGE		ROCK TYPE	DESCRIPTION	PLANAR FEATURE ANGLE	CORE SPECIMEN FOOTAGE	YOUR SAMPLE NUMBER	SAMPLE FOOTAGE		SAMPLE LENGTH	ASSAYS
FROM	TO		Colour, grain size, texture, minerals, alteration, etc.				FROM	TO		
0	14	CASEING	CASEING							
14	25	RHYOLITE TUFF	LIGHT GREY GREEN FINE GRAINED SPARCE MINERALIZATION							
25	50	RHYOLITE TUFF	LIGHT GREY GREEN FINE GRAINED SPARCE MINERALIZATION							
50	75	RHYOLITE TUFF	LIGHT GREY GREEN FINE GRAINED SPARCE MINERALIZATION							
75	100	RHYOLITE TUFF	LIGHT GREY GREEN FINE GRAINED MINERALIZATION INCREASING							
100	125	RHYOLITE TUFF	LIGHT GREY GREEN FINE GRAINED MINERALIZATION INCREASING							
125	130	RHYOLITE TUFF	LIGHT GREY GREEN FINE GRAINED SPARCE MINERALIZATION							
0	14	Casing	Casing							
14	25	Rhyolite tuff	Light grey green fine grained sparce mineralization							
25	50	Rhyolite tuff	Light grey green fine grained sparce mineralization							
50	75	Rhyolite Tuff	Light Grey green fine grained sparce mineralization							
75	100	Rhyolite Tuff	Light grey green fine grained mineralization increasing							
100	125	Rhyolite Tuff	Light grey green fine grained mineralization increasing							
125	130	Rhyolite Tuff	Light grey green fine grained sparce mineralization							

PATRICIA
MINING DIV.
RECEIVED
MAR 30 1973
AM 789:0112:123458 PM



TIA AN
CLAIM
PA 44955

PA 44956

DD HOLE NO. 3 1973

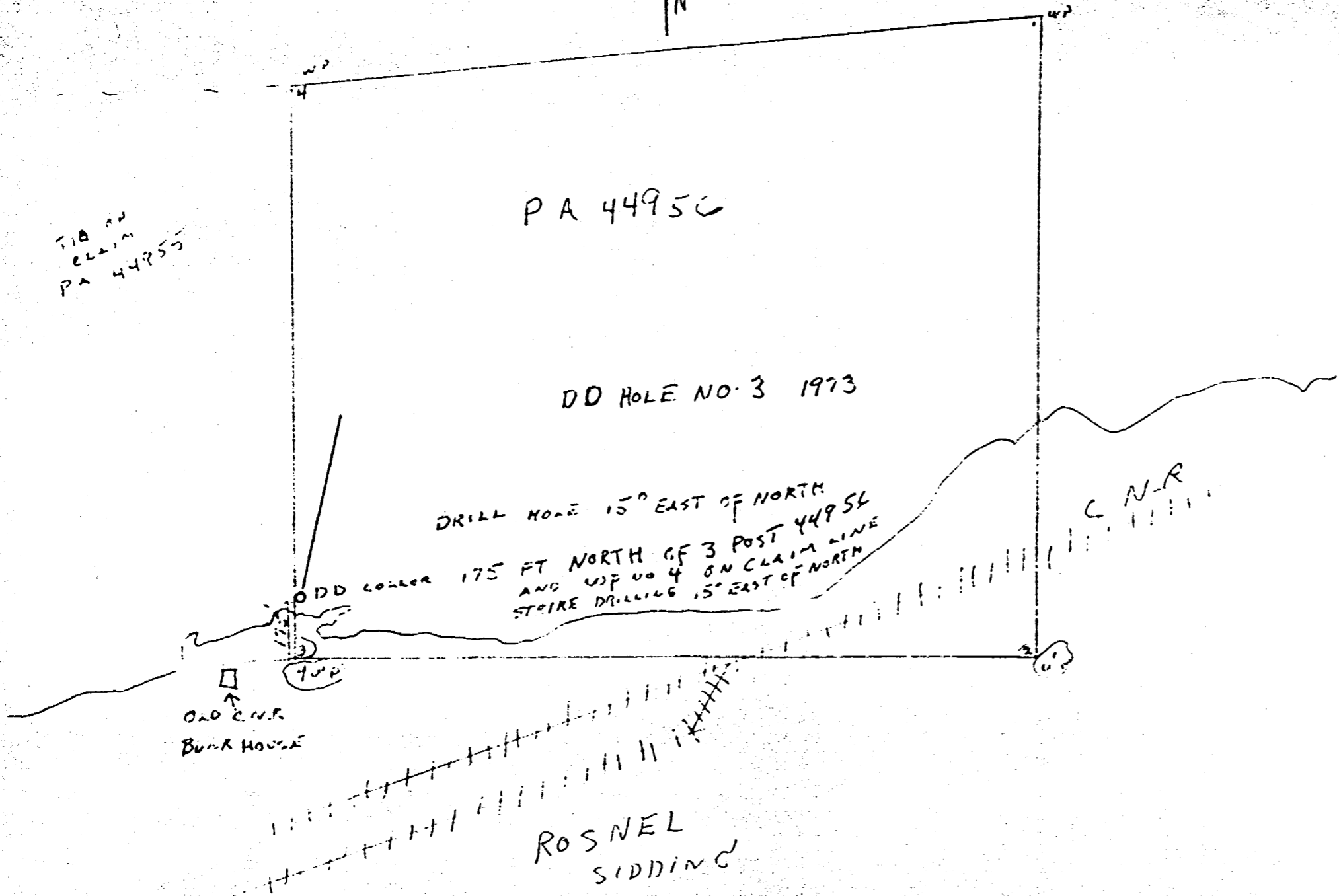
DRILL HOLE 15° EAST OF NORTH
AND 175 FT NORTH OF 3 POST 44956
STAKE DRILLING 15° EAST OF NORTH

OLD C.N.R.
BUNK HOUSE

3
TOP

C.N.R.

ROSNEL
SIDDING





THE MINING ACT - DEPARTMENT OF MINES
DIAMOND DRILLING LOG

Start a new page for every new hole, but fill in top portion of form only on first page for each hole.

FILL IN ON EVERY PAGE

HOLE NO. 4-73 PAGE NO. 1

DRILLING COMPANY THOMPSON W.M.	COLLAR ELEVATION 1-FT	BEARING OF HOLE FROM TRUE NORTH 15° WEST	TOTAL FOOTAGE 214	DIP OF HOLE AT COLLAR 45°	LOCATION OF HOLE IN RELATION TO A FIXED POINT ON THE CLAIM 250 FT NORTH 200 FT EAST NO 3 POST 44956	MAP REFERENCE NO. M2605	CLAIM NO. 44956
DATE MOLE STARTED 24 MARCH	DATE COMPLETED 29 MARCH 1973	DATE LOGGED 29 MAR 73	LOGGED BY W Thompson			LOCATION (Tp., Lot, Con. OR Lat. and Long.) SHARRON LAKE MAP ON BOTS FORD LAKE	
EXPLORATION CO., OWNER OR OPTIONEE THOMPSON W.M.		DATE SUBMITTED 1973 30 MARCH	SUBMITTED BY (Signature) W Thompson			PROPERTY NAME	

FOOTAGE		ROCK TYPE	DESCRIPTION	PLANNED FEATURE ANGLE	CORE SPECIMEN FOOTAGE	YOUR SAMPLE NUMBER	SAMPLE FOOTAGE		SAMPLE LENGTH	ASSAYS
FROM	TO		Colour, grain size, texture, minerals, alteration, etc.				FROM	TO		
0	50	CASEING	15 FT WATER, 35 FT OF SANDY CLAY							
50	75	ANDESITE	GREEN FINE GRAINED, FRACTURED, SPECKS OF IRON PYRITE							
75	100	ANDESITE	AT 84 FT 1" QUARTZ STRINGER GREEN FINE GRAINED FRACTURED, NO MINERALIZATION OTHER THAN SPECKS OF PYRITE							
100	125	ANDESITE	GREEN FINE GRAINED POOR FRACTURING SPECKS OF IRON PYRITE							
125	150	ANDESITE	GREEN FINE GRAINED ALTERING TO DARKER, MORE FRACTURING A LITTLE BETTER MINERALIZATION OF IRON PYRITE							
150	175	ANDESITE	GREEN FINE GRAINED, FRACTURED 6" QUARTZ VEIN AT 171 TO 171 1/2 FT BARREN QUARTZ SOME IRON PYRITE							
175	200	ANDESITE	GREEN FINE GRAINED ALTERING IN COLOR TO A LIGHTER GREEN GREY POOR MINERALIZATION							
200	214	ANDESITE	GREEN TO GREEN GREY FINE GRAINED BRITTLE AND SOME CORE GRINDING TOOK PLACE, POOR MINERALIZATION SOME SPECKS OF PYRITE ONLY NO POSSIBLE VALUES END OF HOLE							
0	50	Casing	15 ft. water, 35 ft. of sandy clay							
50	75	Andesite	Green fine grained fractured, specks of iron pyrite							
75	100	Andesite	At 84 ft. 1" quartz stringer green fine o'mined? Fractured no mineralization other than specks of pyrite							
100	125	Andesite	Green fine grained poor fracturing specks of iron pyrite							
125	150	Andesite	Green fine grained altering to darker more fracturing A little better mineralization of iron pyrite.							
150	175	Andesite	Green fine grained fractured 6" quartz vein at 171 to 171 1/2 ft barren quartz							
175	200	Andesite	Green fine grained altering in lighter green grey poor miner-							
200	214	Andesite	Green to green grey fine grained core grinding took place, poor some specks of pyrite only No possible values END OF HOLE							

RECEIVED
MAR 30 1973
7 8 9 10 11 12 1 2 3 4 5 8



52J04NE0032 52J04NE0011C1 SHARRON LAKE

900



ONTARIO

THE MINING ACT REPORT OF WORK

A separate form is required for each type of work to be recorded.

To the Recorder of ~~XXXXXXXXXXXX~~ PATRICIA Mining Division

I, Robert J. McCombe name of Recorded Holder

P.O. Box 39, Sioux Lookout, Ont. P-7023 Miner's Licence Post Office Address

do hereby report the performance of 152 days of Diamond Drilling type of work

not before reported to be applied on the following contiguous claims

Claim No.	Days	Claim No.	Days	Claim No.	Days
Pa-33338	20	33531	20		
33523	20	33532	20		
33524	20				
33525	20				
33526	20				
33527	20				

All the work was performed on Mining Claim (s) Pa-33336 (In the case of geological and/or geophysical survey (s) where more than 18 claims are involved attach a schedule)

READ CAREFULLY: THE FOLLOWING INFORMATION IS REQUIRED BY THE MINING RECORDER.

- For Manual Work, Stripping or Opening up of Mines, Sinking Shafts or Other Actual Mining Operations - Names and addresses of the men who performed the work and the dates and hours of their employment.
- For Diamond and other Core Drilling - Footage, No. and angle of holes and diameter of core. Name and address of owner or operator of drill. Dates when drilling was done. Signed core log and sketch in duplicate.
- For Compressed Air or Other Power Driven or Mechanical Equipment Type of drill or equipment. Names and addresses of men engaged in operating equipment and the dates and hours of their employment.
- For Power Stripping - Type of equipment. Name and address of owner or operator. Amount expended. Dates on which work was done. Proof of actual cost must be submitted within 30 days of recording.
- With each of the above types of work sketches are required to show the location and extent of the work in relation to the nearest claim post. In the case of diamond or other core drilling the sketch must be submitted in duplicate.
- For Geological and Geophysical Survey - The names and addresses of men employed as well as dates. Type of instrument used in the case of geophysical survey. Reports and maps in duplicate must be filed with the Minister within 60 days of recording.
- For Land Survey - the name and address of Ontario Land surveyor.

The Required Information is as Follows: (Attach a list if this space is insufficient)

Drill owned and operated by W.M.Thompson, Sioux Lookout, Ont. Hole started: Aug 11/65, Completed Aug 18/65 Depth of Hole 152 feet Angle 40 Direction N-57-W Hole No. DDH 65-1 Diameter of core 7/8"

Date 19 Aug 65

Signature of Recorded Holder or Agent (Handwritten signature)

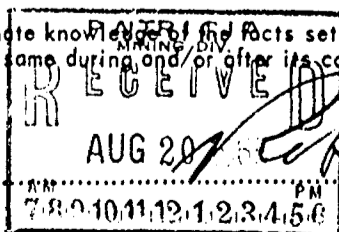
The Mining Act Certificate Verifying Report of Work

I, Robert J. McCombe Box 39, Sioux Lookout, Ontario (Post Office Address)

hereby certify:

- That I have a personal and intimate knowledge of the facts set forth in the report of work annexed hereto, having performed the work or witnessed same during and/or after its completion.
- That the annexed report is true.

Dated 19 Aug 19 65



Signature (Handwritten signature)

THE PENALTY FOR MAKING A FALSE STATEMENT IN THIS REPORT AND/OR CERTIFICATE IS \$500. OR SIX MONTHS IMPRISONMENT OR BOTH



ONTARIO

THE MINING ACT REPORT OF WORK

OHAKRON LAKE - M-2605

A separate form is required for each type of work to be recorded.

65

To the Recorder of Patricia Mining Division Mining Division

I, Walter M. Thompson name of Recorded Holder 38 King Street, Sioux Lookout, Ontario Post Office Address S-2031 Miner's Licence

do hereby report the performance of 748 days of Diamond Drilling type of work

not before reported to be applied on the following contiguous claims

Claim No.	Days	Claim No.	Days	Claim No.	Days
Pa.272339	et al				
	See attached	APPENDIX	"A"		

Geological Branch O.D.M. ASSESSMENT FILES RESEARCH OFFICE... MAY 31 1973 RECEIVED

All the work was performed on Mining Claim (s) Pa.44955, 44956 (In the case of geological and/or geophysical survey (s) where more than 18 claims are involved attach a schedule)

READ CAREFULLY: THE FOLLOWING INFORMATION IS REQUIRED BY THE MINING RECORDER.

- For Manual Work, Stripping or Opening up of Mines, Sinking Shafts or Other Actual Mining Operations - Names and addresses of the men who performed the work and the dates and hours of their employment.
- For Diamond and other Core Drilling - Footage, No. and angle of holes and diameter of core. Name and address of owner or operator of drill. Dates when drilling was done. Signed core log and sketch in duplicate.
- For Compressed Air or Other Power Driven or Mechanical Equipment Type of drill or equipment. Names and addresses of men engaged in operating equipment and the dates and hours of their employment.
- For Power Stripping - Type of equipment. Name and address of owner or operator. Amount expended. Dates on which work was done. Proof of actual cost must be submitted within 30 days of recording.
- With each of the above types of work sketches are required to show the location and extent of the work in relation to the nearest claim post. In the case of diamond or other core drilling the sketch must be submitted in duplicate.
- For Geological and Geophysical Survey - The names and addresses of men employed as well as dates. Type of instrument used in the case of geophysical survey. Reports and maps in duplicate must be filed with the Minister within 60 days of recording.
- For Land Survey - the name and address of Ontario Land surveyor.

The Required Information is as Follows: (Attach a list if this space is insufficient)

D. D. Hole	Depth			
#1-72	101'	on Pa.44955	Aug. 5-12/72	
#1-73	151'	Pa.44955	Feb. 3-11/73	
#2-73	152'	Pa.44955	Feb. 11-25/73	
#3-73	130'	Pa.44956	Mar. 17-23/73	
#4-73	214'	Pa.44956	Mar. 24-29/73	

Date March 30, 1973 Signature of Recorded Holder or Agent

The Mining Act Certificate Verifying Report of Work

I, Walter M. Thompson 38 King Street, Sioux Lookout, Ontario POV 2T0 (Post Office Address)

hereby certify:

- That I have a personal and intimate knowledge of the facts set forth in the report of work annexed here-to, having performed the work or witnessed same during and/or after its completion.
- That the annexed report is true.

Dated March 30 1973 Signature

PATRICIA MINING DIV. RECEIVED MAR 30 1973 AM 7:8-9-10-11:12:13:4:5:8 PM

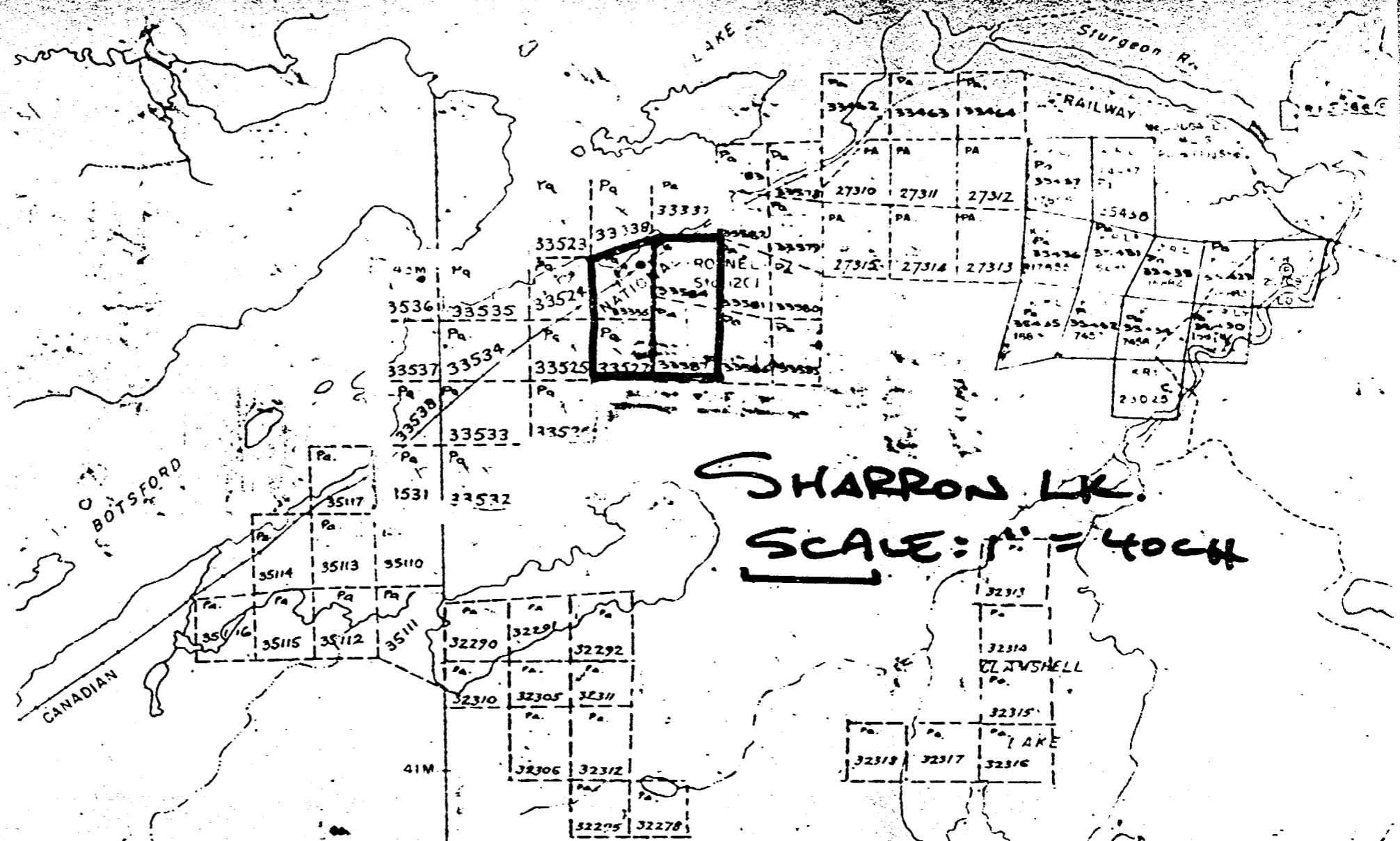
Pa.272085

THE PENALTY FOR MAKING A FALSE STATEMENT IN THIS REPORT AND/OR CERTIFICATE IS \$500. OR SIX MONTHS IMPRISONMENT OR BOTH

APPENDIX "A"

No.	days	
272339	40	Diamond drilling
272341	40	"
272342	4	"
272345	4	"
272347	40	"
272348	4	"
272351	4	"
272353	40	"
272354	40	"
272355	40	"
272356	4	"
272357	24	"
272358	24	"
311883	20	"
311884	20	"
311885	20	"
311886	20	"
311887	20	"
311888	20	"
311889	20	"
311890	20	"
311891	20	"
311892	20	"
311893	20	"
311894	20	"
311895	20	"
311896	20	"
311897	20	"
311898	20	"
311899	20	"
311900	20	"
311901	20	"
311902	20	"
311903	20	"
311904	20	"

Total 748



SHARRON LK.
SCALE: 1" = 400'

APPENDIX "A"

Pa.	days	
272339	40	Diamond drilling
272341	40	"
272342	4	"
272345	4	"
272347	40	"
272348	4	"
272351	4	"
272353	40	"
272354	40	"
272355	40	"
272356	4	"
272357	24	"
272358	24	"
311883	20	"
311884	20	"
311885	20	"
311886	20	"
311887	20	"
311888	20	"
311889	20	"
311890	20	"
311891	20	"
311892	20	"
311893	20	"
311894	20	"
311895	20	"
311896	20	"
311897	20	"
311898	20	"
311899	20	"
311900	20	"
311901	20	"
311902	20	"
311903	20	"
311904	20	"

Total 748

