

52J / 04NE-0012

LOAD: 16 MM

DD 013



52J04NE0033 52J04NE0012 SHARRON LAKE

010

Diamond Drilling

Area of SHARRON LAKE

Report NO 13

Work performed by: Fluralee Gold Mines

Claim NO	Hole NO	Footage	Date	Note
KRL 18691	1	205.0'	Aug/47	
	2	202.0'	Oct/47	
	3	200.0'	Sept/47	
	4	200.0'	Sept/47	
	5	200.0'	Sept/47	
	6	200.0'	Sept/47	
	7	200.0'	Sept/47	
	8	200.0'	Sept/47	

TOTAL: 8 DH 1607 FT

Notes:

PROPERTY AURALEE GOLD MINES

HOLE NUMBER ONE

SHEET NUMBER 1

DIAMOND DRILL RECORD

SECTION FROM 0.0 TO 71.5

LOCATION: LAT. See Pla.
 DEP. _____
 ELEVATION OF COLLAR _____
 DATUM _____
 DIRECTION AT START: BEARING _____
 DIP _____

STARTED Aug. 24/47
 COMPLETED Sept. 7/47
 ULTIMATE DEPTH 201.5
 PROPOSED DEPTH 200.0

DEPTH FEET	FORMATION	SAMPLE NO	WIDTH OF SAMPLE	GOLD \$	SLUDGE GOLD \$
0.0-27.2	Casing: Overburden				
27.2-50.0	Diorite, fairly massive one 2" quartz stringer included and several 1/4' & 1/8" irregular stringers A very little pyrite Scattered throughout pyrite grades from fine to coarse.				
50.0-76.5	Diorite with considerable alteration relatively (with above) alteration consists of numerous irregular quartz stringers. Two feet this footage slightly suggestive "Quartz Diorite" Total one foot very siliceous material. Mineralization remains similar to above.				

**DUPLICATE COPY
 POOR QUALITY ORIGINAL
 TO FOLLOW**

PROPERTY LITTLE GOLD MINE

HOLE NUMBER 111A
 SHEET NUMBER ONE
 SECTION FROM 00 TO 715

DIAMOND DRILL RECORD

LOCATION: LAT. See pla
 DEP.
 ELEVATION OF COLLAR
 DATUM
 DIRECTION AT START: BEARING
 DIP

STARTED Aug. 29, 1947
 COMPLETED Sept 7/47
 ULTIMATE DEPTH 201.5
 PROPOSED DEPTH 200.0

DEPTH FEET	FORMATION	SAMPLE NO.	WIDTH OF SAMPLE	GOLD \$	SLUDGE GOLD \$
0.0-27.2	CASING : OVERBURDEN				
27.2-50.0	DIORITE, FAIRLY MASSIVE. ONE 1" QUARTZ STRINGER INCLUDED AND SEVERAL 1/4" x 1/2" IRREGULAR STRINGERS. A VERY LITTLE PYRITE SCATTERED THROUGHOUT. PYRITE GRADES FROM FINE TO COARSE.				
50.0-71.5	DIOKITE WITH CONSIDERABLE ALTERATION RELATIVELY (WITH REDS). ALTERATION CONSISTS OF NUMEROUS IRREGULAR QUARTZ STRINGERS. TWO FEET THIS PART IS SLIGHTLY SUGGESTIVE "QUARTZ DIORITE". TOTAL ONE FOOT VERY SILICEOUS MATERIAL. MINERALIZATION REMAINS SIMILAR TO ABOVE.				
71.5-100.0	DIORITE				

DRILLED BY

SIGNED J. K. Boyer

PROPERTY AURALEE GOLD MINES

HOLE NUMBER ONE

SHEET NUMBER TWO

DIAMOND DRILL RECORD

SECTION FROM 71.5 TO 111.7

LOCATION: LAT. See Pla.
 DEP. _____
 ELEVATION OF COLLAR _____
 DATUM _____
 DIRECTION AT START: BEARING _____
 DIP _____

STARTED Aug. 25/47

COMPLETED Sept. 7/47

ULTIMATE DEPTH 201.5

PROPOSED DEPTH 200.0

DEPTH FEET	FORMATION	SAMPLE NO	WIDTH OF SAMPLE	GOLD %	SLUDGE GOLD %
71.5-75.0	Massive, fine grained diorite little or no alteration or mineralization.				
75.0-83.8	As above includes 3' altered mineral having one inch quartz				
83.8-85.1	Altered diorite and 1.0' quartz stringer mineralization consists of two or three small blobs of chalcopyrite.	15	1.3	Tr	
85.1-100.0	Fairly massive diorite quite similar to diorite previously noted. Little or no visible mineralization. Include two inches slightly altered material				
100.0-111.7	Massive diorite continues. A very small amount of pyrite scattered throughout Mineralization not sufficient to warrant sampling.				

**DUPLICATE COPY
 POOR QUALITY ORIGINAL
 TO FOLLOW**

PROPERTY HURON GOLD MINES

HOLE NUMBER ONE
 SHEET NUMBER Two
 SECTION FROM 71.5 TO 111.7

DIAMOND DRILL RECORD

LOCATION: LAT. See plan
 DEP.
 ELEVATION OF COLLAR
 DATUM
 DIRECTION AT START: BEARING
 DIP

STARTED Aug 25 1947
 COMPLETED Sept 7 1947
 ULTIMATE DEPTH 201.5
 PROPOSED DEPTH 200.0

DEPTH FEET	FORMATION	SAMPLE NO.	WIDTH OF SAMPLE	GOLD \$	SLUDGE GOLD \$
71.5-75.0	Massive, fine grained diorite. Little or no alteration or mineralization.				
75.0-83.8	1/2' above includes 3 altered millstone gneiss one inch quartz.				
83.8-85.1	Massive diorite and 10' quartz. Sparser mineralization consists of thin or thin small bits of chlorite.	15	1.5	TR	
85.1-100.0	Finely massive diorite, quite similar to sample previously noted. Little or no visible mineralization. Include two inches slightly altered material.				
100.0-111.7	Massive diorite continues. A very small amount of quartz scattered throughout. Mineralization not sufficient to warrant sampling.				

NORTHERN MINER PRESS LIMITED, TORONTO-STOCK FORM NO. 801 REV. 9/44

DRILLED BY

SIGNED H.R. Bayes

PROPERTY: AURALEE GOLD MINES

HOLE NUMBER ONE

SHEET NUMBER 3

SECTION FROM 111.7 TO 142.5

DIAMOND DRILL RECORD

SEE PLA.

LOCATION: LAT. _____
 DEP. _____
 ELEVATION OF COLLAR _____
 DATUM _____
 DIRECTION AT START: BEARING _____
 DIP _____

STARTED Aug. 25/47
 COMPLETED Sept. 7/47
 ULTIMATE DEPTH 201.5
 PROPOSED DEPTH 200.0

DEPTH FEET	FORMATION	SAMPLE NO	WIDTH OF SAMPLE	GOLD g	SLUDGE GOLD g
111.7-115.0	Massive diorite having a very small amount of visible pyrite here and there. Only features are two or three well-defined slips and a little carbonated material.				
115.0-117.5	Altered, fine-grained pyrite having one 3" irregular quartz stringer and a little carbonated material. very little pyrite visible	16	2.5	nil	
117.5-120.9	Fine-grained diorite, similar to above but lacking alteration six inches this footage quite smilar to diorite in first of hole.				
120.9-140.0	Massive, medium grained diorite having a very small amount bit(?) pyrite scattered here and there throughout.				
140.0-142.5	Similar to above with very slight alteration. Slightly more mineral and possibly	17	2.5	Tr	

**DUPLICATE COPY
 POOR QUALITY ORIGINAL
 TO FOLLOW**

PROPERTY Amalee Gold Mine

HOLE NUMBER ONE
 SHEET NUMBER THREE
 SECTION FROM N. 7 TO 175

DIAMOND DRILL RECORD

LOCATION: LAT. See p. 1
 DEP.
 ELEVATION OF COLLAR
 DATUM
 DIRECTION AT START: BEARING
 DIP

STARTED Aug 25/49
 COMPLETED Sept 9/49
 ULTIMATE DEPTH 201.5
 PROPOSED DEPTH 200.0

DEPTH FEET	FORMATION	SAMPLE NO.	WIDTH OF SAMPLE	GOLD \$	SLUDGE GOLD \$
111.7-115.0	MASSIVE DIORITE HAVING A VERY SMALL AMOUNT OF VISIBLE PYRITE HERE AND THERE. ONLY FEATURES ARE TWO OR THREE WELL-DEFINED SLIPS AND A LITTLE CARBONATED MATERIAL.				
115.0-117.5	MASSIVE FINE-GRAINED DIORITE HAVING ONE 3" IRREGULAR QUARTZ STREWER AND LITTLE CARBONATED MATERIAL. ONLY LITTLE PYRITE VISIBLE.	16	2.5	NIL	
117.5-119.9	FINE GRAINED DIORITE, SIMILAR TO ABOVE BUT LACKING INTERSTITIAL. SIX INCHES LONG FINGER LIKE SPHERULES TO BE SEEN IN FIRST 10 FEET.				
119.9-122.0	FINE GRAINED DIORITE HAVING LITTLE CARBONATED MATERIAL AND VERY SMALL AMOUNT OF PYRITE. ONLY ONE 1/2" QUARTZ STREWER.				
122.0-124.0	DIORITE WITH VERY SLIGHTLY MORE CARBONATED MATERIAL.	17	2.5	TR	

DRILLED BY SIGNED

PROPERTY AURALEE GOLD MINES

HOLE NUMBER ONE

SHEET NUMBER FOUR

DIAMOND DRILL RECORD

SECTION FROM 142.5 to 167.4

LOCATION: LAT. SEE PLA.
 DEP. _____
 ELEVATION OF COLLAR _____
 DATUM _____
 DIRECTION AT START: BEARING _____
 DIP _____

STARTED Aug 25/47
 COMPLETED Sept. 7/47
 ULTIMATE DEPTH 201.5
 PROPOSED DEPTH 200.0

DEPTH FEET	FORMATION	SAMPLE NO	WIDTH OF SAMPLE	GOLD g	SLUDGE GOLD g
142.5-145.0	Same as above. Little visible mineralization.				
145.0-147.5	Ditto				
147.5-150.0	Ditto. very slight alteration. a very little fine pyrite visible and possible small blue of fine chalco or v.g. (results to orternine(?) further sampling) this is a specimen sample.	18	2.5	Tr	
150.0-160.3	Massive diorite. includes one 1" quartz stringer and two well-defined slips. very little visible mineralization.				
160.3-166.4	Massive fine grained diorite feature is presence very fine fragmental(?) material little or no visible mineralization				
166.4-167.4	Ditto, but includes some siliceous material.	19	1.0	Tr.	

**DUPLICATE COPY
 POOR QUALITY ORIGINAL
 TO FOLLOW**

PROPERTY Wardell Gold Mines

HOLE NUMBER 2147

SHEET NUMBER Five

DIAMOND DRILL RECORD

SECTION FROM 1915 TO 1915

LOCATION: LAT. See plan
 DEP.
 ELEVATION OF COLLAR
 DATUM
 DIRECTION AT START: BEARING
 DIP

STARTED Aug 25/47
 COMPLETED Sept 9/47
 ULTIMATE DEPTH 20.15
 PROPOSED DEPTH 20.00

DEPTH FEET	FORMATION	SAMPLE NO.	WIDTH OF SAMPLE	GOLD \$	SLUDGE GOLD \$
191.5-195.0	Dark to light greyish greenish fine grained				
187.5-191.5	Dark				
191.5-195.0	Dark grey to light greenish fine grained fine grained variable thin to thick shell 1/2" to 1" thick surface 12 Y.G. (1 minute to 10 minutes further down) this is a "primary" sample	18	1.5	TR	
195.0-198.5	Dark to light greenish grey fine grained fine grained fine grained fine grained fine grained fine grained				
198.5-201.5	Dark to light greenish grey fine grained fine grained fine grained fine grained fine grained fine grained				
201.5-204.5	Dark to light greenish grey fine grained fine grained fine grained fine grained fine grained fine grained				
204.5-207.5	Dark to light greenish grey fine grained fine grained fine grained fine grained fine grained fine grained	19	1.0	TR	

DRILLED BY

SIGNED A. K. Bayne

PROPERTY : AURALEE GOLD MINES LTD.

HOLE NUMBER ONE
 SHEET NUMBER FIVE
 SECTION FROM 167.4 TO 168.5

DIAMOND DRILL RECORD

LOCATION: LAT. SEE PLA.
 DEP. _____
 ELEVATION OF COLLAR _____
 DATUM _____
 DIRECTION AT START: BEARING _____
 DIP _____

STARTED Aug. 25/47
 COMPLETED Sept. 7/47
 ULTIMATE DEPTH 201.5
 PROPOSED DEPTH 200.0

DEPTH FEET	FORMATION	SAMPLE NO	WIDTH OF SAMPLE	GOLD \$	SLUDGE GOLD \$
167.4-171.5	Ditto. No siliceous material				
171.5-173.9	Ditto, includes total 5' siliceous material. little or no mineralization.	20	2.4	nil	
173.9-175.0	Ditto, no siliceous material little or no mineralization				
175.0-175.5	Ditto				
175.5-179.6	Fine grained diorite grading from massive to highly altered one continuous foot siliceous material and several irregular quartz stringers a little visible pyrite scattered throughout	21	4.1	Tr.	
179.6-194.0	Massive coarse grained diorite with one 3" fine grained inclusive of diorite very little mineralization				

**DUPLICATE COPY
 POOR QUALITY ORIGINAL
 TO FOLLOW**

DRILLED BY

SIGNED

PROPERTY *See plan*

HOLE NUMBER *5116*

SHEET NUMBER *11*

DIAMOND DRILL RECORD

SECTION FROM *1172* TO

LOCATION: LAT. *See plan*
 DEP. *See plan*
 ELEVATION OF COLLAR
 DATUM
 DIRECTION AT START: BEARING
 DIP

STARTED *Aug 27/49*
 COMPLETED *Sept 9/49*
 ULTIMATE DEPTH *2015*
 PROPOSED DEPTH *200.0*

DEPTH FEET	FORMATION	SAMPLE NO	WIDTH OF SAMPLE	GOLD \$	SLUDGE GOLD \$
<i>174-175</i>	<i>...</i>				
<i>175-176</i>	<i>...</i>				
<i>176-177</i>	<i>...</i>				
<i>177-178</i>	<i>...</i>				
<i>178-179</i>	<i>...</i>				
<i>179-180</i>	<i>...</i>				
<i>180-181</i>	<i>...</i>				
<i>181-182</i>	<i>...</i>				
<i>182-183</i>	<i>...</i>				
<i>183-184</i>	<i>...</i>				
<i>184-185</i>	<i>...</i>				
<i>185-186</i>	<i>...</i>				
<i>186-187</i>	<i>...</i>				
<i>187-188</i>	<i>...</i>				
<i>188-189</i>	<i>...</i>				
<i>189-190</i>	<i>...</i>				
<i>190-191</i>	<i>...</i>				
<i>191-192</i>	<i>...</i>				
<i>192-193</i>	<i>...</i>				
<i>193-194</i>	<i>...</i>				
<i>194-195</i>	<i>...</i>				
<i>195-196</i>	<i>...</i>				
<i>196-197</i>	<i>...</i>				
<i>197-198</i>	<i>...</i>				
<i>198-199</i>	<i>...</i>				
<i>199-200</i>	<i>...</i>				

DRILLED BY

SIGNED

A.K. Bayes

PROPERTY AURALEE GOLD MINES

HOLE NUMBER ONE

SHEET NUMBER SIX

DIAMOND DRILL RECORD

SECTION FROM 194.0 TO 205.0

LOCATION: LAT. SEE PLA.
 DEP. _____

STARTED Aug. 25/47

ELEVATION OF COLLAR _____

COMPLETED Sept. 7/47

DATUM _____

ULTIMATE DEPTH _____

DIRECTION AT START: BEARING _____
 DIP _____

PROPOSED DEPTH _____

DEPTH FEET	FORMATION	SAMPLE NO	WIDTH OF SAMPLE	GOLD §	SLUDGE GOLD §
194.0-205.0	Massive medium grained diorite, little or no mineralization				
	END OF HOLE				

**DUPLICATE COPY
 POOR QUALITY ORIGINAL
 TO FOLLOW**

DRILLED BY _____

SIGNED _____

PROPERTY MURREE GOLD MINES

HOLE NUMBER 101
 SHEET NUMBER 1
 SECTION FROM 124.0 TO 125.5

DIAMOND DRILL RECORD

LOCATION: LAT. See plan
 DEP.
 ELEVATION OF COLLAR
 DATUM
 DIRECTION AT START: BEARING
 DIP

STARTED Aug 25 / 49
 COMPLETED Sept 7 / 49
 ULTIMATE DEPTH
 PROPOSED DEPTH

DEPTH FEET	FORMATION	SAMPLE NO.	WIDTH OF SAMPLE	GOLD \$	SLUDGE GOLD \$
<u>124.0 - 125.5</u>	<u>111 - 112 - 113 - 114 - 115 - 116 - 117 - 118 - 119 - 120 - 121 - 122 - 123 - 124 - 125</u>				

NORTHERN MINER PRESS LIMITED, TORONTO - STOCK FORM NO. 801 REV. 9/44

DRILLED BY SIGNED H. K. Boyd

PROPERTY: AURALEE GOLD MINES LTD.

HOLE NUMBER TWO

SHEET NUMBER ONE

DIAMOND DRILL RECORD

SECTION FROM 0.0 to 41.1

LOCATION: LAT. SEE PLA.
 DEP. _____
 ELEVATION OF COLLAR _____
 DATUM _____
 DIRECTION AT START: BEARING _____
 DIP 40°

STARTED Sept. 8/47
 COMPLETED Sept. 10/47
 ULTIMATE DEPTH 202.0
 PROPOSED DEPTH 200.0

DEPTH FEET	FORMATION	SAMPLE No	WIDTH OF SAMPLE	GOLD \$	SLUDGE GOLD \$
0.0-22.0	Casing Overburden				
22.0-25.0	Slightly altered fine grained diorite 6" siliceous material and two 1/2" quartz stringers. Little or no visible mineralization	22	3.0		
25.0-27.5	Massive, fine grained diorite includes a little siliceous material little or no visible mineralization.	23	2.5		
27.5-30.5	Ditto, no silicification noticable possible later sampling				
30.5-34.2	Highly altered quartz and fine grained diorite. Some fine chalcopyrite.	24	3.7		
34.7-35.9	Slightly altered fine grained diorite little or no visible mineralization. Subject to later sampling				
35.9-39.5	Same as 30.5-34.2	25	3.6		
39.5-41.1	Same as 34.2-35.5				

**DUPLICATE COPY
 POOR QUALITY ORIGINAL
 TO FOLLOW**

PROPERTY MINING & DEVELOPMENT LTD

HOLE NUMBER 10147

DIAMOND DRILL RECORD

SHEET NUMBER 011

SECTION FROM 00 TO 011

LOCATION: LAT. See plan
 DEP. _____
 ELEVATION OF COLLAR _____
 DATUM _____
 DIRECTION AT START: BEARING 111° 11'
 DIP 41°

STARTED SEPTEMBER 5 1917
 COMPLETED 10 147
 ULTIMATE DEPTH 202.0
 PROPOSED DEPTH 200.0

DEPTH FEET	FORMATION	SAMPLE NO.	WIDTH OF SAMPLE	GOLD \$	SLUDGE GOLD \$
0.0 - 17.0	CLAYSTONE - UNALTERED.				
17.0 - 25.0	SLIGHTLY ALTERED FINE-GRAINED SLATE. 6" SILICIOUS INTERBED AND 7-10 1/2" QUARTZ STRINGS. LITTLE OR NO VISIBLE MINERALIZATION	7.6	2.0		
25.0 - 32.5	SLATE, FINE-GRAINED SLATE INCLUDES A FEW SILICIOUS INTERBED. LITTLE OR NO MINERALIZATION.	12	2.5		
32.5 - 38.5	SLATE, FINE-GRAINED SLATE POSSIBLE LATER QUARTZ.				
38.5 - 47.2	SLIGHTLY ALTERED (SILICEOUS AND FINE- GRAINED SLATE. SOME FINE CHALCOPYRITE.	4.4	3.7		
47.2 - 57.0	SLIGHTLY ALTERED FINE-GRAINED SLATE LITTLE OR NO VISIBLE MINERALIZATION. SUBJECT TO LATER SAMPLING.				
57.0 - 59.5	SILICEOUS 30.5 - 39.6	11	2.6		
59.5 - 61.1	SILICEOUS 39.7 - 35.3				

NORTHERN MINER PRESS LIMITED, TORONTO-STOCK FORM NO. 801 REV. 9/44

DRILLED BY _____

SIGNED A.K. [Signature]

PROPERTY AURALEE GOLD MINES LTD.

HOLE NUMBER TWO
 SHEET NUMBER TWO
 SECTION FROM 41.1 TO 202.0

DIAMOND DRILL RECORD

LOCATION: LAT. SEE PLA.
 DEP. _____
 ELEVATION OF COLLAR _____
 DATUM _____
 DIRECTION AT START: BEARING _____
 DIP _____

STARTED _____
 COMPLETED _____
 ULTIMATE DEPTH _____
 PROPOSED DEPTH _____

DEPTH FEET	FORMATION	SAMPLE NO	WIDTH OF SAMPLE	GOLD \$	SLUDGE GOLD \$
41.1-43.4	Quartz and altered, siliceous diorite very little mineralization visible.	26	2.3		
43.4-50.0	Fairly massive medium grained diorite. Very slightly altered for 2". A little visible chalco seen.				
50.0-71.8	Fairly massive medium grained diorite with a little fine pyrite scattered throughout.				
71.8-75.0	Highly altered somewhat siliceous diorite. slight mineralization	27	3.2		
75.0-100.0	Fairly massive diorite, grading from fine to med. grained little mineral				
100.0-125.0	Ditto: includes 1.0" altered material				
125.0-150.0	Ditto 1.0' altered material				
150.0-175.0	Ditto; 1.0' quartz (Barren looking) subject to later sampling.				
175.0-200	Fine to med. diorite, Som slight alteration mineralization poor.				
200-202.0	Ditto				
	END OF HOLE				

**DUPLICATE COPY
 POOR QUALITY ORIGINAL
 TO FOLLOW**

DRILLED BY

SIGNED

PROPERTY MINDICE GOLD MINES LTD.

HOLE NUMBER 7411

SHEET NUMBER 7410

DIAMOND DRILL RECORD

SECTION FROM 11.1 TO 202.0

LOCATION: LAT. See pla
 DEP.
 ELEVATION OF COLLAR
 DATUM
 DIRECTION AT START: BEARING
 DIP

STARTED Sept 8/49
 COMPLETED Sept 10/49
 ULTIMATE DEPTH 202.0-
 PROPOSED DEPTH 200.0-

DEPTH FEET	FORMATION	SAMPLE No.	WIDTH OF SAMPLE	GOLD \$	SLUDGE GOLD \$
0.0 - 4.4	CRUSTY SAND (MATERIAL) SURFACE				
	DIPRITE VERY LIGHT MINERALIZATION	14	1.5		
4.4 - 20.0	CRUSTY SAND, FINE GRAINED				
	DIPRITE VERY LIGHT MINERALIZATION				
	FOR 1" H. LINES VISUAL				
	CRUSTY SAND				
20.0 - 11.5	CRUSTY SAND, FINE GRAINED				
	DIPRITE VERY LIGHT MINERALIZATION				
	PIECE SANDY THROUGHOUT				
11.5 - 75.0	HIGHT ALTERED, DIPRITE SAND	15			
	DIPRITE - LIGHT MINERALIZATION				
75.0 - 100.0	CRUSTY SAND, FINE GRAINED				
	GRADING FROM TOP TO MEDIUM				
	CRUSTY SAND, FINE GRAINED				
100.0 - 150.0	DIPRITE SAND, FINE GRAINED				
	CRUSTY SAND				
150.0 - 190.0	CRUSTY SAND, FINE GRAINED				
190.0 - 195.0	DIPRITE TO CRUSTY SAND (MATERIAL SAND)				
	SUBJECT TO WATER SIGNIFICANT				
195.0 - 200.0	FINE TO MEDIUM DIPRITE, SAND				

NORTHERN MINER PRESS LIMITED, TORONTO - STOCK FORM NO. 801 REV. 8/44
 SLIGHT ALTERATION MINERALIZATION
 200.0 - 202.0 DITTO.
 DRILLED BY END OF HOLE

SIGNED [Signature]

PROPERTY AURALEE GOLD MINES

HOLE NUMBER three
 SHEET NUMBER one
 SECTION FROM 0.0 TO 100.0

DIAMOND DRILL RECORD

LOCATION: LAT. SEE PLAN
 DEP. _____
 ELEVATION OF COLLAR _____
 DATUM _____
 DIRECTION AT START: BEARING _____
 DIP _____

STARTED Sept. 11/47
 COMPLETED Sept. 12/47
 ULTIMATE DEPTH 200.0
 PROPOSED DEPTH 200.0

DEPTH FEET	FORMATION	SAMPLE NO	WIDTH OF SAMPLE	GOLD \$	SLUDGE GOLD \$
0.0-26.0	Casing				
26.0-50.0	Fairly massive diorite very little visible mineralization.				
50.0-61.5	Highly altered diorite very little visible mineralization.				
61.5-65.0	Slightly altered diorite having three 1" and one 3" quartz stringers some fine pyrite visible	31	3.5		
65.0-75.0	Slightly altered diorite including one 6" barren looking quartz stringer. Very little visible mineralization.				
75.0-77.0	Massive diorite very little mineralization.				
77.0-80.0	Mixture highly altered diorite and quartz; later predominating little visible mineral	32	3.0		
80.0-100.0	Fairly massive diorite very slightly altered in places. Poorly mineralized.				
DUPLICATE COPY POOR QUALITY ORIGINAL TO FOLLOW					

DRILLED BY

SIGNED

PROPERTY Harold Gold Mines

HOLE NUMBER 1110

SHEET NUMBER 015

DIAMOND DRILL RECORD

SECTION FROM 0.0 TO 200.0

LOCATION: (SEE PLAN)
 LAT.....
 DEP.....
 ELEVATION OF COLLAR.....
 DATUM.....
 DIRECTION AT START: BEARING.....
 DIP.....

STARTED Sep 11/49
 COMPLETED " 12/49
 ULTIMATE DEPTH 200.0
 PROPOSED DEPTH 200.0

DEPTH FEET	FORMATION	SAMPLE NO.	WIDTH OF SAMPLE	GOLD \$	SLUDGE GOLD \$
0.0 - 10.0	CRUST				
10.0 - 20.0	THICK MASSIVE QUARTZITE WITH LITTLE VISIBLE MINERALIZATION.				
20.0 - 30.0	THICK MASSIVE QUARTZITE WITH LITTLE VISIBLE MINERALIZATION				
30.0 - 45.0	SHALLOO MASSIVE QUARTZITE WITH THREE 1" AND ONE 2" QUARTZ STRINGS SOME FINE WHITE VISIBLE.	31	2.5		
45.0 - 75.0	SLIGHTLY ALTERED QUARTZITE WITH ONE 6" BURDEN - IN THE QUARTZITE SPRINGER. VERY LITTLE VISIBLE MINERAL IZATION.				
75.0 - 110	MASSIVE QUARTZITE WITH LITTLE MINERAL IZATION.				
110 - 130	MASSIVE HEAVY ALTERED QUARTZITE WITH QUARTZ LINES MINERALIZATION WITH YELLOW MINERAL.	32	3.0		
130 - 200.0	THICK MASSIVE QUARTZITE VERY SLIGHTLY ALTERED IN PLACES, SLIGHT MINERALIZED.				

NORTHERN MINER PRESS LIMITED, TORONTO-STOCK FORM NO. 901 REV. 9/44

DRILLED BY..... SIGNED H. K. Bayliss

PROPERTY AURALEE GOLD MINES

HOLE NUMBER 111111

SHEET NUMBER TWO

SECTION FROM 100.0 TO 200.0

DIAMOND DRILL RECORD

LOCATION: LAT. SEE PLAN
 DEP. _____
 ELEVATION OF COLLAR _____
 DATUM _____
 DIRECTION AT START: BEARING _____
 DIP _____

STARTED Sept. 11/47
 COMPLETED Sept. 12/47
 ULTIMATE DEPTH 200.0
 PROPOSED DEPTH 200.0

DEPTH FEET	FORMATION	SAMPLE NO	WIDTH OF SAMPLE	GOLD \$	SLUDGE GOLD \$
100.0-125.0	Fairly massive diorite grading from fine to medium grained. Includes three irregular quartz stringers. Poorly mineralized				
125.0-150.0	Massive diorite with .5' altered material at 147.3', some fine pyrite scattered throughout.				
150.0-175.0	Fairly massive diorite. a very small amount visible pyrite and alteration changes to fine grained at 61.8' last 10' includes three irregular quartz stringers.				
175.0-200.0	Slightly altered diorite ranging alternately from fine to medium grained includes two 6" quartz stringers and one 2" a very little fine pyrite visible.				
	END OF HOLE				

**DUPLICATE COPY
 POOR QUALITY ORIGINAL
 TO FOLLOW**

NORTHERN MINER PRESS LIMITED, TORONTO-STOCK FORM NO 801 REV. 9/44

DRILLED BY

SIGNED

PROPERTY PLUMMER GOLD MINES

HOLE NUMBER 11/49

SHEET NUMBER 749

DIAMOND DRILL RECORD

SECTION FROM 100.0 TO 200.0

LOCATION: LAT. See plan
 DEP.

STARTED Sept 11/49

ELEVATION OF COLLAR

COMPLETED 12/49

DATUM

ULTIMATE DEPTH 200.0

DIRECTION AT START: BEARING

PROPOSED DEPTH 200.0

DEPTH FEET	FORMATION	SAMPLE NO.	WIDTH OF SAMPLE	GOLD \$	SLUDGE GOLD \$
100.0-125.0	FAIRLY MASSIVE DIORITE GRANITE FROM FINE TO MEDIUM GRAINED. INCLUDES THREE IRREGULAR QUARTZ SPALLS. POORLY MINERALIZED.				
125.0-150.0	MASSIVE DIORITE WITH 15' INTERED MATERIAL AT 147.5'. SOME FINE MATERIAL SCATTERED THROUGHOUT.				
150.0-175.0	FAIRLY MASSIVE DIORITE. VERY SMALL AMOUNT VISIBLE PYRITE AND ALTERATION CHANGES TO FINE GRAINED AT 165'. 10' INCLUDES THREE IRREGULAR QUARTZ SPALLS.				
175.0-190.0	SLIGHTLY ALTERED DIORITE GRANITE INCOMPLETELY FROM FINE TO MEDIUM GRAINED. INCLUDES TWO 6" QUARTZ SPALLS AND ONE 2" VERY LITTLE FINE PYRITE VISIBLE.				
	END OF HOLE.				

DRILLED BY

SIGNED H. R. [Signature]

PROPERTY AURALEE GOLD MINES

HOLE NUMBER FOUR

SHEET NUMBER ONE

SECTION FROM 0.0 TO _____

DIAMOND DRILL RECORD

LOCATION: LAT. SEE PLAN
 DEP. _____
 ELEVATION OF COLLAR _____
 DATUM _____
 DIRECTION AT START: BEARING _____
 DIP _____

STARTED Sept. 13/47
 COMPLETED Sept. 13/47
 ULTIMATE DEPTH 200.0
 PROPOSED DEPTH 200.0

DEPTH FEET	FORMATION	SAMPLE NO	WIDTH OF SAMPLE	GOLD \$	SLUDGE GOLD \$	
0.0-20.0	Casing					
20.0-24.9	Slightly altered diorite with a very small amount fine pyrite.					
24.9-28.6	Highly altered mixture quartz, diorite. Brown carbonate and signs green chlorite schist resem- bles vein material very little visible mineral.	28	3.7			
28.6-37.7	Altered diorite with two 1/2" quartz stringers. Little or no mineral.					
37.7-41.1	Altered mixture quartz and diorite. Quartz con- tinuous for 2.1' signs green chlorite schist	29	3.4			
41.1-50.0	Altered diorite includes one 3" quartz stringer. Little mineralization visible. Possibly subject later sampling					
50.0-75.0	Diorite, ranging from fine to coarse texture and massive to slightly altered. Includes one two inch quartz stringer, little visible mineral.					

**DUPLICATE COPY
 POOR QUALITY ORIGINAL
 TO FOLLOW**

NORTHERN MINER PRESS LIMITED, TORONTO - STOCK FORM NO 301 REV. 9/44

DRILLED BY

SIGNED

PROPERTY

Thurston Gold Mines Ltd.

HOLE NUMBER

101-101

SHEET NUMBER

ONE

DIAMOND DRILL RECORD

SECTION FROM

0.0 TO

LOCATION: LAT.

SEE PLAN.

DEP.

ELEVATION OF COLLAR

DATUM

DIRECTION AT START: BEARING

.....

DIP

STARTED

Sept 13/47

COMPLETED

13/47

ULTIMATE DEPTH

200.0

PROPOSED DEPTH

200.0

DEPTH FEET	FORMATION	SAMPLE NO.	WIDTH OF SAMPLE	GOLD \$	SLUDGE GOLD \$
0.0-1.0	<i>CASING</i>				
1.0-19.9	<i>DIAGENETICALLY ALTERED QUARTZ A VERY SMALL AMOUNT FINE PYRITE</i>				
19.9-20.0	<i>HEAVY MOTTLED MIXTURE QUARTZ, DIORITE, GREEN CARBONATE AND SOME GREEN CARBONATE SPLIT. RESEMBLES WITH INTERMEDIATE LITTLE VISIBLE MINERAL.</i>	<i>100</i>	<i>3.7</i>		
20.0-27.7	<i>MOTTLED QUARTZ WITH TWO 1/2" QUARTZ SPINDERS. LITTLE OR NO MINERAL.</i>				
27.7-41.1	<i>MOTTLED MIXTURE QUARTZ AND DIORITE. QUARTZ CONTINUOUS FOR 2.1', SOME GREEN CARBONATE SPLIT.</i>	<i>109</i>	<i>2.1</i>		
41.1-55.0	<i>MOTTLED DIORITE. INCLUDES ONE 2" QUARTZ SPINDER. LITTLE MINERALIZATION VISIBLE. POSSIBLY SPLIT OF THREE SPINDERS.</i>				
55.0-70.0	<i>DIORITE. INCLUDES FOUR FINE TO COARSE TEXTURE AND MISSING TO</i>				

NORTHERN MINER PRESS LIMITED, TORONTO - STOCK FORM NO. 504 REV. 1945

DRILLED BY

*SLIGHTLY ALTERED. INCLUDES FINE
TWO 1/2" QUARTZ SPINDERS LITTLE
VISIBLE MINERAL.*

SIGNED

[Signature]

PROPERTY AURALEE GOLD MINES

HOLE NUMBER FOUR

SHEET NUMBER TWO

DIAMOND DRILL RECORD

SECTION FROM 75.0 TO _____

LOCATION: LAT. SEE PLAN

STARTED _____

DEP. _____

COMPLETED _____

ELEVATION OF COLLAR _____

ULTIMATE DEPTH _____

DATUM _____

PROPOSED DEPTH _____

DIRECTION AT START: BEARING _____

DIP _____

DEPTH FEET	FORMATION	SAMPLE NO	WIDTH OF SAMPLE	GOLD \$	SLUDGE GOLD \$
75.0-88.0	Ditto appearance of rhyolite here and there very little pyrite shown				
88.0-90.1	Alternate mixture quartz and greenstone? Little visible mineral	30	2.1		
90.1-100.0	Slightly altered diorite alternating with massive diorite. Some fine pyrite throughout.				
100.0-111.0	Slightly altered diorite little mineralization				
111.0-125.0	Probably rhyolite, including one 2" quartz stringer little visible mineralization				
125.0-132.1	Ditto				
132.1-138.4	Diortie massive little or no mineralization				
138.4-150.0	Rhyolite slightly altered for 6". No visible mineralization				

**DUPLICATE COPY
POOR QUALITY ORIGINAL
TO FOLLOW**

DRILLED BY _____

SIGNED _____

PROPERTY: FLORINER GOLD MINES

HOLE NUMBER

SHEET NUMBER 750

DIAMOND DRILL RECORD

SECTION FROM 750 TO

LOCATION: LAT. See plan

STARTED Sept 13/49

DEP.

COMPLETED 13/49

ELEVATION OF COLLAR

DATUM

ULTIMATE DEPTH 200.0

DIRECTION AT START: BEARING

PROPOSED DEPTH 200.0

DIP

DEPTH FEET	FORMATION	SAMPLE NO.	WIDTH OF SAMPLE	GOLD \$	SLUDGE GOLD \$
<u>750-800</u>	<u>Ditto appearance of rock here and there very little pyrite shown</u>				
<u>800-900</u>	<u>massive medium quartz and greenish little visible mineral</u>	<u>20</u>	<u>1.1</u>		
<u>900-1000</u>	<u>Slightly altered during alter- ation with massive quartz. Some fine pyrite throughout.</u>				
<u>1000-1100</u>	<u>Slightly altered during alter- ation.</u>				
<u>1100-1250</u>	<u>Probably rhyolite, including one 1" quartz stringer. Little visible mineralization.</u>				
<u>1250-1300</u>	<u>Ditto</u>				
<u>1300-1400</u>	<u>Dark massive little or no mineralization.</u>				
<u>1400-1500</u>	<u>Dark massive slightly altered for 6". No visible mineralization.</u>				

DRILLED BY

SIGNED A. K. Hayes

PROPERTY AURALEE GOLD MINES

HOLE NUMBER FOUR

SHEET NUMBER THREE

SECTION FROM 150.0 TO 200.0

DIAMOND DRILL RECORD

LOCATION: LAT. SEE PLAN
 DEP. _____
 ELEVATION OF COLLAR _____
 DATUM _____
 DIRECTION AT START: BEARING _____
 DIP _____

STARTED Sept. 13/47
 COMPLETED Sept. 13/47
 ULTIMATE DEPTH 200.0
 PROPOSED DEPTH 200.0

DEPTH FEET	FORMATION	SAMPLE NO	WIDTH OF SAMPLE	GOLD \$	SLUDGE GOLD \$
150.0-175.0	Alternating mixture rhyolite? (may be fine grained diorite here and preceding in this hole) and medium diorite. No visible mineralization for most part. some coarse pyrite here and there				
175.0-200.0	Ditto.				
	END OF HOLE				

**DUPLICATE COPY
 POOR QUALITY ORIGINAL
 TO FOLLOW**

DRILLED BY _____

SIGNED _____

PROPERTY PAWLEY GOLD MINES

HOLE NUMBER 1111

SHEET NUMBER 7111

DIAMOND DRILL RECORD

SECTION FROM 150.0 TO 200.0

LOCATION: LAT. See plan
 DEP.
 ELEVATION OF COLLAR
 DATUM
 DIRECTION AT START: BEARING
 DIP

STARTED Sept 13/47
 COMPLETED " 13/47
 ULTIMATE DEPTH 200.0
 PROPOSED DEPTH 200.0

DEPTH FEET	FORMATION	SAMPLE NO.	WIDTH OF SAMPLE	GOLD \$	SLUDGE GOLD \$
150.0 - 175.0	ALTERED LIXTURE PHYLLITE? (MAY BE FINE-GRAINED DIORITE HERE AND PRECEDING IN THIS HOLE) AND MEDIUM DIORITE, NO VISIBLE MIN- ERALIZATION FOR INSTANT. SOME				
175.0 - 200.0	COARSE PYRITE HERE AND THERE DITTO.				
	END OF HOLE.				

DRILLED BY

SIGNED H.K. Bayne

PROPERTY : AURALEE GOLD MINES

HOLE NUMBER FIVE

SHEET NUMBER ONE

DIAMOND DRILL RECORD

SECTION FROM 0.0 TO 100.0

LOCATION: LAT. SEE PLAN
 DEP. _____

ELEVATION OF COLLAR _____

DATUM _____

DIRECTION AT START: BEARING _____
 DIP _____

STARTED Sept. 14/47

COMPLETED Sept. 15/47

ULTIMATE DEPTH 200.0

PROPOSED DEPTH 200.0

DEPTH FEET	FORMATION	SAMPLE NO	WIDTH OF SAMPLE	GOLD \$	SLUDGE GOLD \$
0.0-26.0	Casing				
26.0-50.0	Diorite: ranging from fine to medium grained and from highly altered to massive. includes one 2" quartz stringer. Poorly mineralized				
50.0-63.4	Massive diorite poorly mineralized except in slips.				
63.4-67.5	Highly altered diorite-quartz mixture with a little fine pyrite.	33	4.1		
67.5-70.6	Ditto	34	2.5		
70.6-73.8	Altered diorite, poorly mineralized				
73.8-77.5	Same as 63.4-67.5 but having considerably more fine pyrite	35	3.7		
77.5-80.0	Ditto: less mineral	36	2.5		
80.0-100.0	Slightly altered diorite with a little fine pyrite scattered throughout. Subject to later sampling in places, dependant on assays of 35 & 36.				

**DUPLICATE COPY
 POOR QUALITY ORIGINAL
 TO FOLLOW**

NORTHERN MINER PRESS LIMITED, TORONTO - STOCK FORM NO 801 REV. 9/44

DRILLED BY _____

SIGNED _____

PROPERTY THREE GOLD MINES

HOLE NUMBER 216

SHEET NUMBER ONE

DIAMOND DRILL RECORD

SECTION FROM 0.0 TO 100.0

LOCATION: LAT. See plan
 DEP.
 ELEVATION OF COLLAR
 DATUM
 DIRECTION AT START: BEARING
 DIP

STARTED Self 14/49
 COMPLETED 15/49
 ULTIMATE DEPTH 200.0
 PROPOSED DEPTH 200.0

DEPTH FEET	FORMATION	SAMPLE NO.	WIDTH OF SAMPLE	GOLD \$	SLUDGE GOLD \$
0.0 - 26.0	CAPING				
26.0 - 50.0	DIORITE; RUNNING FROM FINE TO MEDIUM - GRANED AND FROM HIGHLY ALTERED TO MASSIVE; MASSIVE ONE 4" QUARTZ STRINGER; PORPHY MINERALIZED				
50.0 - 67.5	DIORITE ^{SOFT IN PARTS} HIGHLY ALTERED DIORITE - QUARTZ MIXTURE WITH A LITTLE FINE PYRITE	33	1.1		
67.5 - 70.6	DITTO	34	1.5		
70.6 - 73.8	ALTERED DIORITE, PORPHY MINERALIZED				
73.8 - 77.5	SAME AS 63A - 67.5 BUT WITH CONSIDERABLE MORE FINE PYRITE	35	3.7		
77.5 - 100.0	DITTO - LESS MINERAL	36	1.5		
100.0 - 100.0	SLIGHTLY ALTERED DIORITE WITH A LITTLE FINE PYRITE SCATTERED THROUGHOUT - SUBJECT TO INTER MINERALING IN PLACES, DEPENDING ON NATURE OF 35 & 36				

DRILLED BY

SIGNED H. R. B. [Signature]

PROPERTY: AURALEE GOLD MINES

HOLE NUMBER FIVE
 SHEET NUMBER TWO
 SECTION FROM 100.0 TO 200.0

DIAMOND DRILL RECORD

LOCATION: LAT. SEE PLAN
 DEP. _____
 ELEVATION OF COLLAR _____
 DATUM _____
 DIRECTION AT START: BEARING _____
 DIP _____

STARTED Sept. 14/47
 COMPLETED Sept. 15/47
 ULTIMATE DEPTH 200.0
 PROPOSED DEPTH 200.0

DEPTH FEET	FORMATION	SAMPLE NO	WIDTH OF SAMPLE	GOLD \$	SLUDGE-GOLD \$			
100.0-125.0	Massive medium grained diorite poorly mineralized.							
125.0-150	Ditto: has a little fine grained, material and one 1 1/2" quartz stringer, mineralization poor.							
150.0-175.0	Ditto. very slight alteration in one place.							
175.0-200.0	Ditto, slight alteration in places. Poorly mineralized.							
	(END OF HOLE)							

**DUPLICATE COPY
 POOR QUALITY ORIGINAL
 TO FOLLOW**

NORTHERN MINER PRESS LIMITED, TORONTO - STOCK FORM NO 801 REV 8'44

DRILLED BY

SIGNED

PROPERTY Hunter Hill Mines

HOLE NUMBER FIVE

SHEET NUMBER TWENTY

SECTION FROM 100.0 TO 200.0

DIAMOND DRILL RECORD

LOCATION: LAT. See plan
 DEP. See plan
 ELEVATION OF COLLAR See plan
 DATUM See plan
 DIRECTION AT START: BEARING See plan
 DIP See plan

STARTED Sept 14/47
 COMPLETED 15/47
 ULTIMATE DEPTH 200.0
 PROPOSED DEPTH 200.0

DEPTH FEET	FORMATION	SAMPLE NO.	WIDTH OF SAMPLE	GOLD \$	SLUDGE GOLD \$
100.0-175.0	MUSSELS IRONSTONE ENCLOSED QUARTZ POORLY MINERALIZED.				
175.0-150.0	DITTO: HAS A LITTLE FINE GRANULE MATTER AND ONE 1/2" QUARTZ STUNNER MINERALIZATION.				
150.0-125.0	DITTO. VERY SLIGHT ALTERATION IN ONE PLACE.				
125.0-100.0	DITTO. SLIGHT ALTERATION IN PLACES. POORLY MINERALIZED.				
	(END OF HOLE)				

DRILLED BY

SIGNED

T.K. Baynes

PROPERTY: AURALEE GOLD MINES

HOLE NUMBER SIX

SHEET NUMBER ONE

DIAMOND DRILL RECORD

SECTION FROM 0.0 TO 125.0

LOCATION: LAT. SEE PLAN

STARTED Sept. 16/47

DEP. _____

COMPLETED Sept. 20/47

ELEVATION OF COLLAR _____

DATUM _____

ULTIMATE DEPTH 200.0

DIRECTION AT START: BEARING _____

PROPOSED DEPTH 200.0

DIP _____

DEPTH FEET	FORMATION	SAMPLE NO	WIDTH OF SAMPLE	GOLD \$	SLUDGE GOLD \$
0.0-7.0	Casing				
7.0-10.0	Highly altered, slightly siliceous material. May be rhyolite, some quartz and a little carb.	37	3.0		
10.0-15.0	Ditto. Very little visible mineral	38	5.0		
15.0-25.0	Altered rhyolite? Subject to little sampling if preyious(??) footage assays.				
25.0-27.8	Highly altered quartz-rhyolite? mixture. 95% quartz little mineral.	38	2.8		
27.8-50.0	Slightly altered generally massive rhyolite? poorly mineralized.				
50.0-52.8	Ditto				
52.8-75.0	Alternating mixture diortie and rhyolite? Poorly mineralized				
75.0-100.0	Ditto. A very small amount fine pyrite.				
100.0-110.0	Altered rhyolite				
110.0-112.5	Highly altered quartz rhyolite? mixture poorly mineralized	40	2.5		
112.5-125.0	Same as 52.8-75.0 last foot agglomeratized?? Poorly mineralized.				

**DUPLICATE COPY
POOR QUALITY ORIGINAL
TO FOLLOW**

DRILLED BY _____

SIGNED _____

PROPERTY IMPERIAL GOLD MINES

HOLE NUMBER 217
 SHEET NUMBER ONE
 SECTION FROM 0.0 TO 115.0

DIAMOND DRILL RECORD

LOCATION: LAT. SEE PLAN
 DEP. SEE PLAN
 ELEVATION OF COLLAR SEE PLAN
 DATUM SEE PLAN
 DIRECTION AT START: BEARING SEE PLAN
 DIP SEE PLAN

STARTED Sept 16/49
 COMPLETED 20/49
 ULTIMATE DEPTH 200.0
 PROPOSED DEPTH 200.0

DEPTH FEET	FORMATION	SAMPLE NO.	WIDTH OF SAMPLE	GOLD \$	SLUDGE GOLD \$
0.0 - 7.0	CASING				
7.0 - 10.0	HIGHLY ALTERED, SLIGHTLY SILICEOUS MATERIAL, MAY BE RHYOLITE, SOME QUARTZ AND A LITTLE CARBONATE	27	5.0		
10.0 - 15.0	DITTO, VERY LITTLE VISIBLE MINERAL.	58	5.0		
15.0 - 25.0	ALTERED RHYOLITE? SUBJECT TO LATER STIPPLING IN PORTIONS				
25.0 - 27.8	HIGHLY ALTERED QUARTZ - RHYOLITE? MIXTURE, 95% QUARTZ, LITTLE MINERAL	39	7.5		
27.8 - 50.0	SLIGHTLY ALTERED, GENERALLY MASSIVE MASSIVE RHYOLITE? POORLY MINERALIZED.	59			
50.0 - 57.8	DITTO				
57.8 - 75.0	INTERMITTING MIXTURE, DIORITE AND RHYOLITE? POORLY MINERALIZED.				
75.0 - 100.0	DITTO, A VERY SMALL AMOUNT OF PYRITE.				
100.0 - 110.0	ALTERED RHYOLITE				
110.0 - 112.5	HIGHLY ALTERED QUARTZ - RHYOLITE? MIXTURE, POORLY MINERALIZED	80	7.5		

NORTHERN MINER PRESS LIMITED, TORONTO - STOCK FORM NO. 501 REV. 5/44
 11/25/49
 52.8 - 75.0, LAST FOOT
 REWORKED? POORLY MINERALIZED
 DRILLED BY

SIGNED H. R. Bayliss

PROPERTY AURALEE GOLD MINESHOLE NUMBER SEVENSHEET NUMBER ONE**DIAMOND DRILL RECORD**SECTION FROM 0.0 TO 80.2
 LOCATION: LAT. SEE PLAN
 DEP. _____
 ELEVATION OF COLLAR _____
 DATUM _____
 DIRECTION AT START: BEARING _____
 DIP _____

 STARTED SEPT. 22/47
 COMPLETED Sept. 24/47
 ULTIMATE DEPTH 200.0
 PROPOSED DEPTH 200.0

DEPTH FEET	FORMATION	SAMPLE NO	WIDTH OF SAMPLE	GOLD \$	SLUDGE GOLD \$
0.0-26.0	Casing Overburden				
26.0-29.8	Mixture 1.2' quartz and remainder highly altered, slightly siliceous diorite little visible mineral.	41	3.8		
29.8-32.3	Highly altered diorite, including one 2" quartz stringer. Little visible mineralization.	42	2.5		
32.3-45.9	Fairly massive diorite with a very small amount medium pyrite.				
45.9-49.7	Slightly sheared diorite includes one 4" quartz stringer and 5" greyel seapl? Considerable cause pyrite	43	3.6		
49.7-59.3	Very slightly altered diorite slight evidence of shearing a little fine pyrite scattered throughout.				
59.3-60.7	Quartz-diorite mixture little visible mineral	44			
60.7-75.0	Diorite. slightly sheared and slightly altered in places				
75.0-80.2	Ditto				

DUPLICATE COPY
POOR QUALITY ORIGINAL
TO FOLLOW

NORTHERN MINER PRESS LIMITED, TORONTO - STOCK FORM NO. 301 REV. 8/44

DRILLED BY _____

SIGNED _____

PROPERTY Murphy Gold Mines

HOLE NUMBER 3811

SHEET NUMBER ONE

DIAMOND DRILL RECORD

SECTION FROM 0.13 TO 20.0

LOCATION: LAT. See plan
 DEP.

STARTED Sept 22/49

ELEVATION OF COLLAR

COMPLETED 24/49

DATUM

ULTIMATE DEPTH 200.0

DIRECTION AT START: BEARING

PROPOSED DEPTH 200.0

DIP

DEPTH FEET	FORMATION	SAMPLE NO.	WIDTH OF SAMPLE	GOLD \$	SLUDGE GOLD \$
0.0-26.0	CASING AND BUSHING				
26.0-41.8	MIXTURE OF QUARTZ AND PYRITE DIAPHRAGM HEAVY METALS, SLIGHTLY SILICEOUS DIORITE, LITTLE VISIBLE MINERAL.	41	3.5		
41.8-51.3	HIGHLY ALTERED DIORITE, INCLUDES ONE 2" QUARTZ STRINGER, LITTLE VISIBLE MINERALIZATION.	42	1.5		
51.3-95.9	FAIRLY MASSIVE DIORITE WITH A VERY SMALL AMOUNT CERUSSITE PYRITE.				
95.9-127	SLIGHTLY SUGARED DIORITE, INCLUDES ONE 2" QUARTZ STRINGER AND 5" CRINOID SEMI-CHEMICAL CORAL FRAG.	43	3.0		
127-152.3	VERY SLIGHTLY ALTERED DIORITE, SLIGHT EVIDENCE OF SUGARING, LITTLE FINE PYRITE SCATTERED THROUGHOUT.				
152.3-167	QUARTZ DIORITE MIXTURE, LITTLE VISIBLE MINERAL.	44			
167-180	DIORITE, SLIGHTLY SUGARED AND SLIGHTLY ALTERED IN PLACES.				
180-185	DITTO				

DRILLED BY

SIGNED (K. Bay)

PROPERTY : AURALEE GOLD MINES

HOLE NUMBER SEVEN

SHEET NUMBER TWO

DIAMOND DRILL RECORD

SECTION FROM 80.2 To 200.0

LOCATION: LAT. _____
 DEP. _____

ELEVATION OF COLLAR _____

DATUM _____

DIRECTION AT START: BEARING _____
 DIP _____

STARTED Sept. 22/47

COMPLETED Sept. 24/47

ULTIMATE DEPTH _____

PROPOSED DEPTH _____

DEPTH FEET	FORMATION	SAMPLE NO	WIDTH OF SAMPLE	GOLD g	SLUDGE GOLD g
80.2-83.0	Quartz little visible mineral	45	2.8		
83.0-100.0	Slightly sltered diorite including numerous irregular 2" 4 1" quartz stringers. Very little visible mineralization.				
100.0-110.0	Slightly altered diorite including greyel seam and one 4" quartz stringer plus two irregular 1" stringers. Little or no visible mineralization				
110.0-115.0	Mixture quartz and diorite 98%. Quartz very little visible mineral.	46	5.0		
115.0-120.0	Ditto	47	5.0		
120.0-125.0	Ditto	48	5.0		
125.0-150.0	Diorite includes three 1" quartz stringers. Little visible mineral.				
150.0-175.0	Slightly altered diorite. Little visible mineralization.				
175.0-200.0	Massive diorite little or no visible mineralization.				
	END OF HOLE				

**DUPLICATE COPY
 POOR QUALITY ORIGINAL
 TO FOLLOW**

DRILLED BY _____

SIGNED _____

PROPERTY AMBLE GOLD MINES

HOLE NUMBER 2524
 SHEET NUMBER 710
 SECTION FROM 200 TO 200

DIAMOND DRILL RECORD

LOCATION: LAT.....
 DEP.....
 ELEVATION OF COLLAR.....
 DATUM.....
 DIRECTION AT START: BEARING.....
 DIP.....

STARTED Sept 22/49
 COMPLETED 24/49
 ULTIMATE DEPTH 200.0
 PROPOSED DEPTH 200.0

DEPTH FEET	FORMATION	SAMPLE NO.	WIDTH OF SAMPLE	GOLD \$	SLUDGE GOLD \$
80.0 - 85.0	QUARTZ, LITTLE VISIBLE MINERAL	45	2.5		
85.0 - 100.0	SLIGHTLY ALTERED DIORITE INCLUDING NUMEROUS IRREGULAR 1/2" - 1" QUARTZ STRINGERS. VERY LITTLE VISIBLE MINERALIZATION.				
100.0 - 110.0	SLIGHTLY ALTERED DIORITE INCLUDING GRANEL SAND AND ONE 4" QUARTZ STRINGER PLUS TWO IRREGULAR 1" STRINGERS. LITTLE OR NO VISIBLE MINERALIZATION.				
110.0 - 115.0	MIXTURE QUARTZ AND DIORITE. 95% QUARTZ. VERY LITTLE VISIBLE MINERAL.	46	5.0		
115.0 - 120.0	DITTO	47	5.0		
120.0 - 125.0	DITTO	48	5.0		
125.0 - 150.0	DIORITE. INCLUDES THREE 1" QUARTZ STRINGERS. LITTLE VISIBLE MINERAL.				
150.0 - 175.0	DIORITE SLIGHTLY ALTERED DIORITE. LITTLE VISIBLE MINERALIZATION.				
175.0 - 200.0	MASSIVE DIORITE. LITTLE OR NO VISIBLE MINERALIZATION.				
	END OF HOLE.				

DRILLED BY.....

SIGNED A.K. [Signature]

PROPERTY AURALEE GOLD MINES

HOLE NUMBER EIGHT

SHEET NUMBER ONE

DIAMOND DRILL RECORD

SECTION FROM 0.0 TO 68.7

LOCATION: LAT. SEE PLAN
 DEP. _____

ELEVATION OF COLLAR _____

DATUM _____

DIRECTION AT START: BEARING _____
 DIP _____

STARTED Sept. 25/47

COMPLETED Sept. 25/47

ULTIMATE DEPTH 200.0

PROPOSED DEPTH 200.0

DEPTH FEET	FORMATION	SAMPLE NO	WIDTH OF SAMPLE	GOLD \$	SLUDGE GOLD \$
0.0					
25.0-30.0	Very highly altered schisted material includes some quartz and other siliceous material Very little mineral grayish colour	49	5.0		
30.0-35.0	Ditto	50	5.0		
35.0-40.0	Ditto	51	5.0		
40.0-45.0	Ditto	52	5.0		
45.0-50.0	Ditto	53	5.0		
50.0-55.0	Ditto	54	5.0		
55.0-60.0	Ditto	55	5.0		
60.0-65.0	Ditto	56	5.0		
65.0-68.7	Ditto	57	3.7		

**DUPLICATE COPY
 POOR QUALITY ORIGINAL
 TO FOLLOW**

PROPERTY Prospect Hill Mines

HOLE NUMBER 41017

SHEET NUMBER 106

DIAMOND DRILL RECORD

SECTION FROM 20 TO 68.7

LOCATION: LAT. See plan
 DEP. _____

STARTED Sept 25/49

ELEVATION OF COLLAR _____

COMPLETED 25/49

DATUM _____

ULTIMATE DEPTH 200.0

DIRECTION AT START: BEARING _____
 DIP _____

PROPOSED DEPTH 200.0

DEPTH FEET	FORMATION	SAMPLE NO.	WIDTH OF SAMPLE	GOLD \$	SLUDGE GOLD \$
0-10					
10-20					
20-30					
30-40					
40-50					
50-60					
60-70					
70-80					
80-90					
90-100					
100-110					
110-120					
120-130					
130-140					
140-150					
150-160					
160-170					
170-180					
180-190					
190-200					
200-210					
210-220					
220-230					
230-240					
240-250					
250-260					
260-270					
270-280					
280-290					
290-300					
300-310					
310-320					
320-330					
330-340					
340-350					
350-360					
360-370					
370-380					
380-390					
390-400					
400-410					
410-420					
420-430					
430-440					
440-450					
450-460					
460-470					
470-480					
480-490					
490-500					
500-510					
510-520					
520-530					
530-540					
540-550					
550-560					
560-570					
570-580					
580-590					
590-600					
600-610					
610-620					
620-630					
630-640					
640-650					
650-660					
660-670					
670-68.7					

NORTHERN MINER PRESS LIMITED, TORONTO-STOCK FORM NO. 501 REV. 9/44

DRILLED BY _____

SIGNED [Signature]

PROPERTY AURALEE GOLD MINES LTD.

HOLE NUMBER EIGHT

SHEET NUMBER TWO

SECTION FROM 68.7 TO 200.0

DIAMOND DRILL RECORD

LOCATION: LAT. _____
 DEP. _____

ELEVATION OF COLLAR _____

DATUM _____

DIRECTION AT START: BEARING _____
 DIP _____

STARTED Sept. 25/47

COMPLETED Sept. 25/47

ULTIMATE DEPTH 200.0

PROPOSED DEPTH 200.0

DEPTH FEET	FORMATION	SAMPLE NO	WIDTH OF SAMPLE	GOLD g	SLUDGE GOLD g
68.7-75.0	Fine grained massive diorite no visible mineralization.				
75.0-89.9	Ditto, becomes medium grained at 83.4. no visible mineral.				
89.9-92.6	Quartz-diorite mixture 98% quartz no visible mineral.	58	2.7		
92.6-100.0	Massive medium diorite. No visible mineralization				
100.0-125.0	Massive, medium diorite slightly sheared no visible mineralization.				
125.0-150.0	ditto				
150.0-175.0	ditto				
175.0-200.0	Ditto 1.5' broken up material no visible mineralization. includes two 2" quartz stringers.				
	END OF HOLE				

**DUPLICATE COPY
 POOR QUALITY ORIGINAL
 TO FOLLOW**

DRILLED BY _____

SIGNED _____

PROPERTY 1101116 5-11-1948 270

HOLE NUMBER EIGHT
 SHEET NUMBER TWO
 SECTION FROM 60.7 TO 200.0

DIAMOND DRILL RECORD

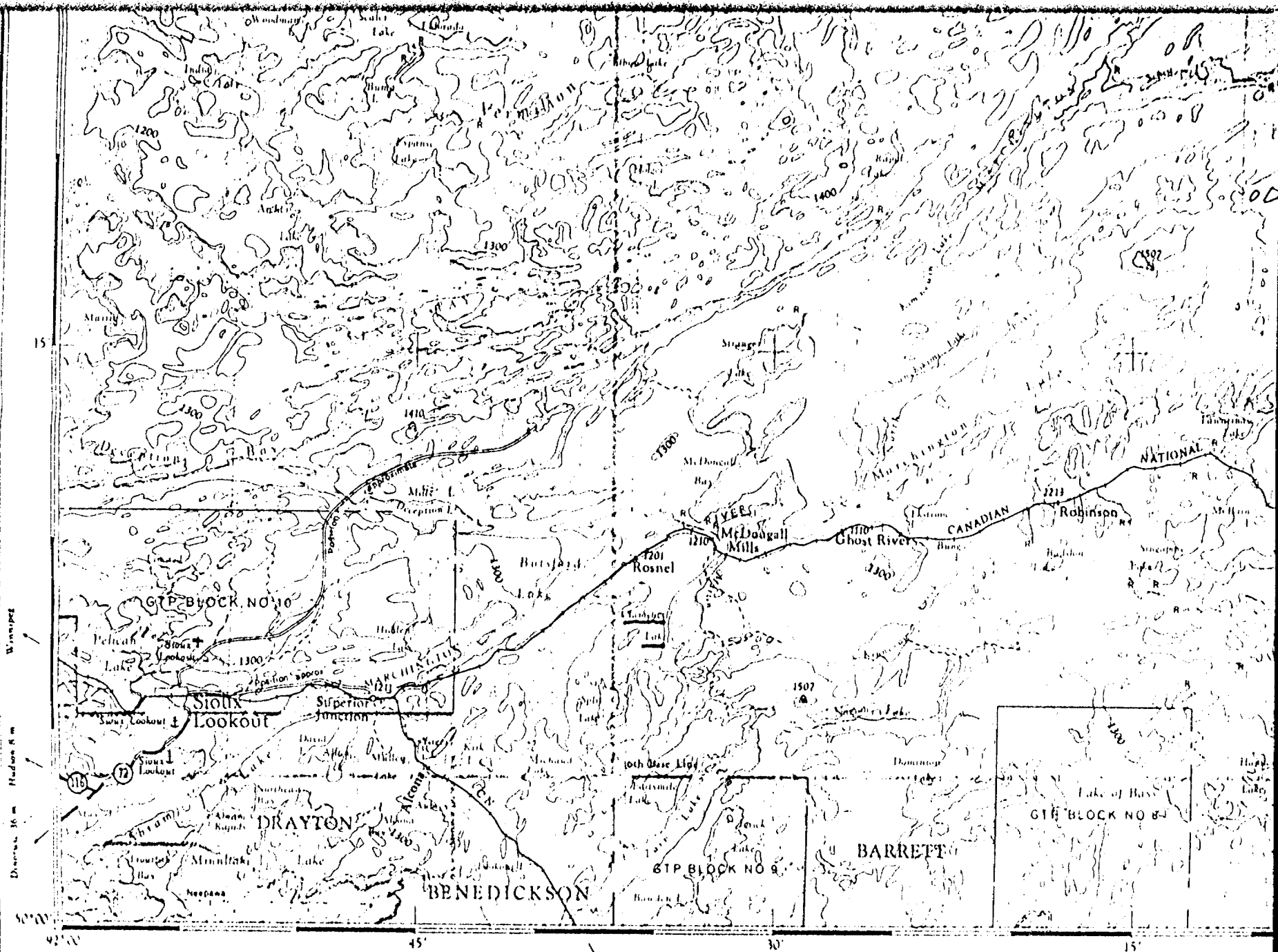
LOCATION: LAT.
 DEP.
 ELEVATION OF COLLAR
 DATUM
 DIRECTION AT START: BEARING
 DIP

STARTED Sept 2, 1949
 COMPLETED 257.0
 ULTIMATE DEPTH 200.0
 PROPOSED DEPTH 200.0

DEPTH FEET	FORMATION	SAMPLE NO.	WIDTH OF SAMPLE	GOLD \$	SLUDGE GOLD \$
0.0 - 7.00	Fine grained massive quartzite. No visible mineralization.				
7.00 - 22.0	Dark grey massive quartzite. At 8.5' in visible mineral.				
22.0 - 44.0	Quartzite with massive nature 28% quartz. No visible mineralization.	51	27		
44.0 - 100.0	Massive, medium quartzite. No visible mineralization.				
100.0 - 150.0	Massive medium quartzite. No visible mineralization.				
150.0 - 170.0	Ditto				
170.0 - 190.0	Ditto. At 185' observed in section. No visible mineralization.				
190.0 - 200.0	At 195' trace of iron & sulfur. END OF HOLE.				

DRILLED BY

SIGNED [Signature]



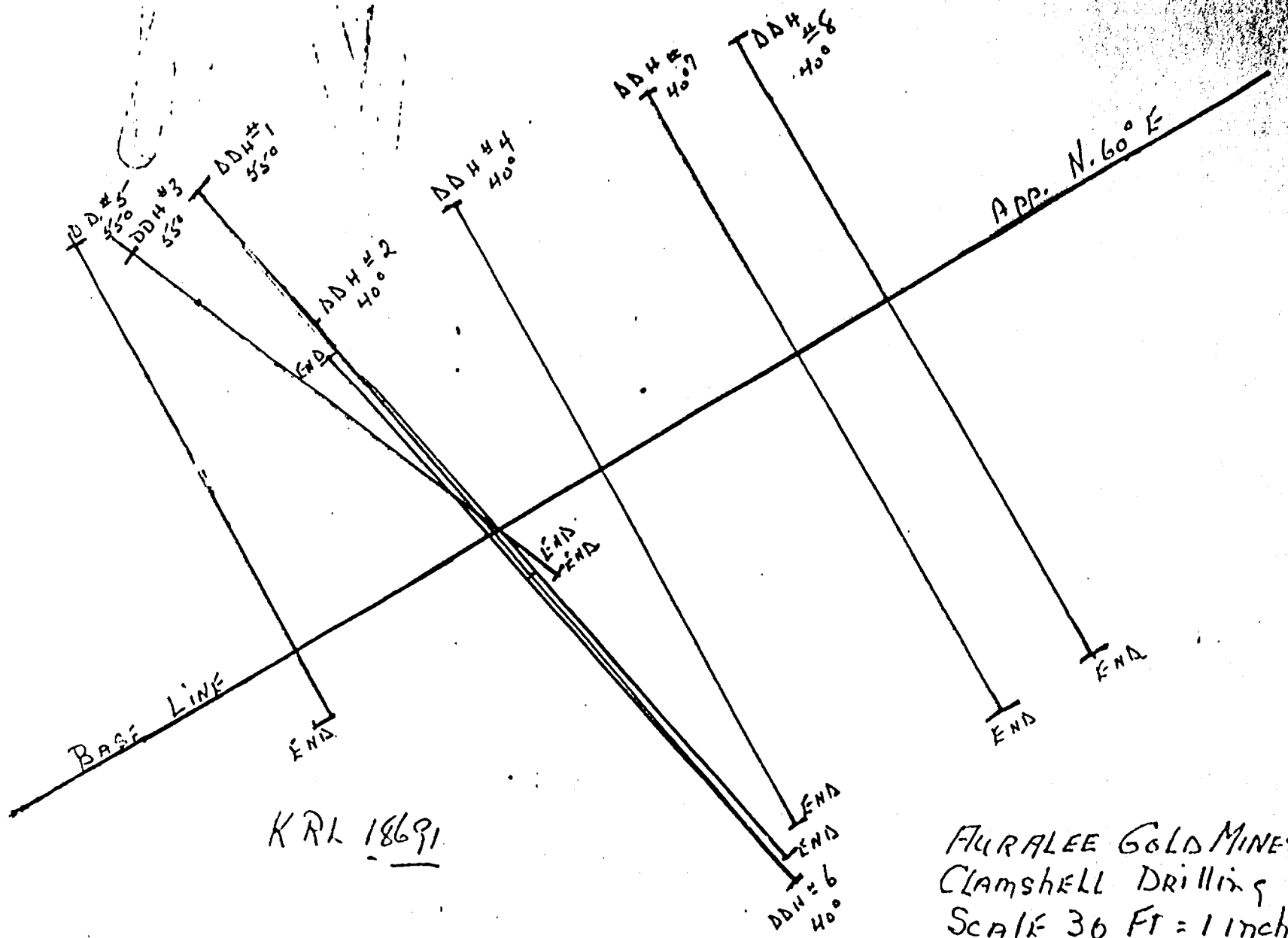
Fort William

605
222

REPRODUCED FROM THE ORIGINAL DRAWING BY THE SURVEYS AND MAPPING BRANCH, DEPARTMENT OF MINES AND TECHNICAL SURVEYS.

Compiled, 1963, by the SURVEYS AND MAPPING BRANCH, DEPARTMENT OF MINES AND TECHNICAL SURVEYS. Field surveys 1959 and 1960. Printed 1965.

Magnetic declination 1964 varies from 04°05' easterly at centre of west edge to 01°05' easterly at centre of east edge. Mean annual change 1.1' easterly.



FLURALLEE GOLD MINES
 CLAMSHELL DRILLING
 SCALE 30 FT = 1 inch



MINISTRY OF TERRACE RESOURCES
RECEIVED
NOV 3 - 1978
RESIDENT GEOLOGIST'S OFFICE
SIOUX LOOKOUT

Your file:

Our file:

15 November, 1978

Dear Pentti:

Here is your copies of the Ghost River Synd. material you brought down for me ... many thanks! Also enclosed is the set of drill logs to go with the Flusake Gold Mines (1947) stuff I gave you on your most recent visit; not too much of interest in them, but it is still unfortunate that the location is poorly known.

I am starting some checking around on other participants in that venture, and have thus far turned up:

- a) "Florgold" is probably Florepld Red Lake Gold Mines Ltd, incorporated 1946, charter cancelled in 1959 (Ont. charter cancelled 1965)... may not find out much more on this one;
- b) Ghost River Mining Syndicate Ltd was a \$35,000 corp., started up in 1940, charter lapsed in 1946;
- c) Prospectors' Airways changed name once, then was apparently absorbed into Kerr-Addison between 1960 and 1966.

I have yet to inquire with Cominagas as to whether they still have any information, but will keep in touch.

Best —

Dick

16888

16887

18437

18433

~~W. Cameron~~
July 8/41
~~10 AM~~

#3 WP
200 FT

#1 WP
200 FT

18439
~~1888~~

#4 W. Cameron
July 7/41
10 AM
18691

#4 E. Gordon
July 7/41
2 PM
Lic P 6128

#3 18688

#2 WP
300 FT

#1 WP
300 FT

18443

#4 E. Gordon
July 7/41
8 AM
Lic # P 6128
18685

#4 W. Cameron
July 14/41
8 AM
18692

#4 E. Gordon
July 7/41
4 PM
18697

WP #2
700 FT

#1 WP
300 FT

18464

E. Gordon
July 10/41
7 AM
18688

#4 E. Gordon
July 16/41
9 AM
18689

#4 H. DeLund
P 6174
July 16-41
18645

#4 H. DeLund
P 6174
July 16-41
18644

WP #2

Calmar field
No. 1

#4 W. Cameron
July 16/41
1 PM
18693

#4 W. Cameron
July 16/41
3 PM
18694

#4 E. Gordon
July 19/41
7 AM
18690

50 08
01 34