



52J045W8927 2.6286 DRAYTON

010

KENNETH GUY EXPLORATION SERVICES

REPORT ON  
GEOLOGICAL SURVEYS  
FOR  
NAHANNI MINES LIMITED

BERRY, HIGHWAY AND GOODIE CREEK GROUPS

SIOUX LOOKOUT AREA, ONTARIO

RECEIVED

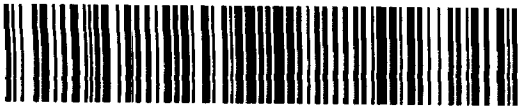
JAN 19 1984

MINING LANDS SECTION

November, 1983  
Timmins, Ontario

Kenneth Guy  
Geologist

2.6286



52J04SW8927 2.6286 DRAYTON

010C

OF CONTENTS

INTRODUCTION

REGIONAL GEOLOGY

BERRY GROUP

Introduction

Topography

Geological Survey

HIGHWAY GROUP

Introduction

Topography

Geological Survey

GOODIE CREEK GROUP

Introduction

Topography

Geological Survey

LIST OF TABLES

TABLE 1                      Table of Lithologic Units

LIST OF FIGURES

FIGURE 1                      Project Location Map  
FIGURE 2                      Location Map - BERRY GROUP  
FIGURE 3                      Location Map - HIGHWAY GROUP  
FIGURE 4                      Location Map - GOODIE CREEK GROUP

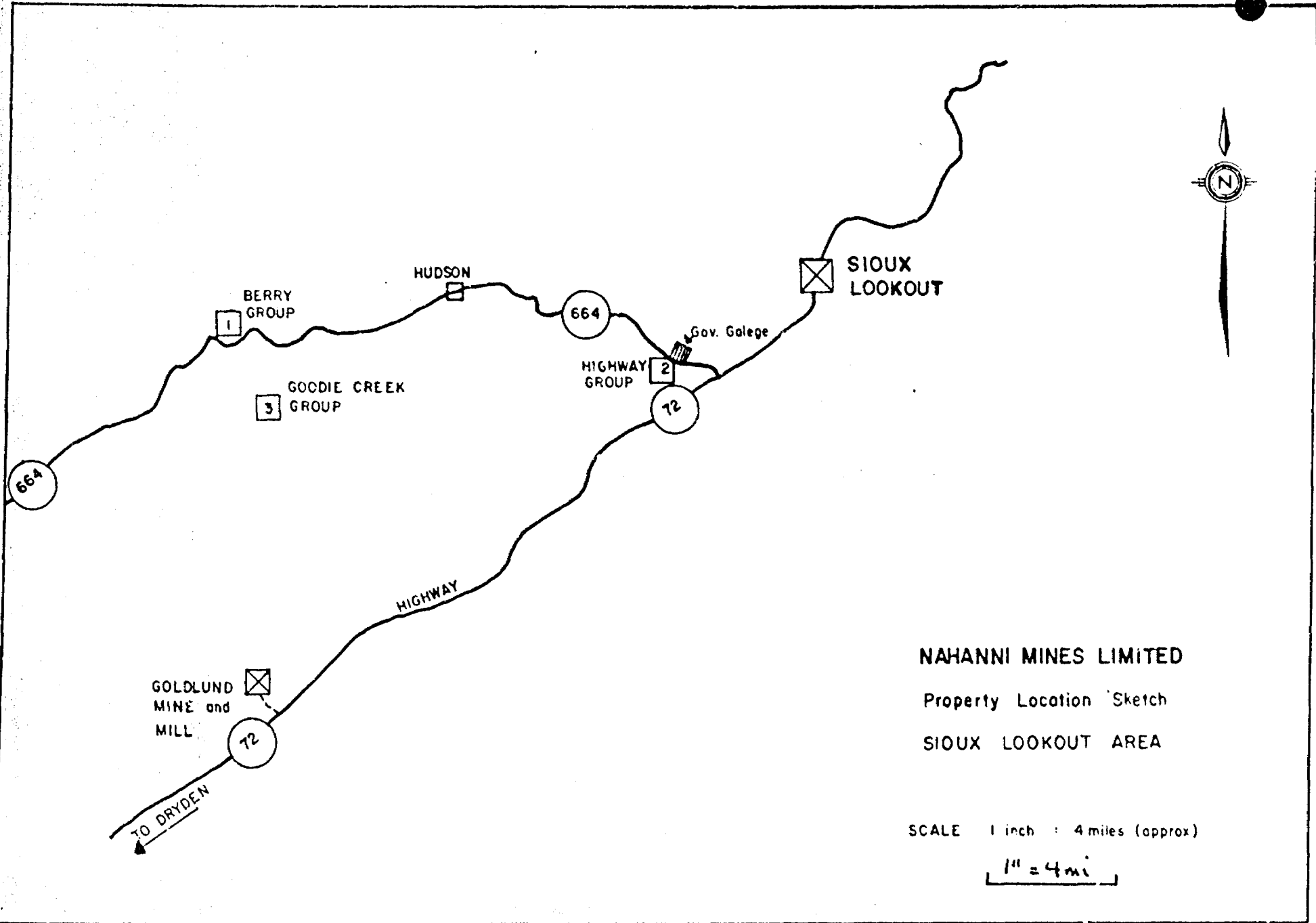
(Individual Property Geological Plans in Back Pocket)

## INTRODUCTION

The following report details the results of geological surveys carried out on behalf of Nahanni Mines Limited by Kenneth Guy Exploration Services on three claim blocks designated as the Berry Group, Highway Group and Goodie Creek Group (Figure 1). These three groups comprise the Lookout Project, within the District of Kenora, Patricia Mining Division, Sioux Lookout area of north-western Ontario.

Sioux Lookout is located at the northern terminus of Highway 72 about 180 air miles northwest of Thunder Bay. Sioux Lookout is serviced by the Canadian National Railway, Provincial Highway 72 and a municipal airport.

The Lookout Project properties are located south and west of Sioux Lookout within close proximity of Provincial Highway 664, and all-weather logging roads.



NAHANNI MINES LIMITED

Property Location Sketch

SIOUX LOOKOUT AREA

SCALE 1 inch : 4 miles (approx)

1" = 4 mi

## REGIONAL GEOLOGY

The Lookout Project lies within the Wabigoon greenstone belt, a regional East-West belt of alternating metavolcanic and metasedimentary sequences. The consolidated rocks of the area are of Archean age. There are two main metavolcanic belts in the area, each bordered on the south by metasediments.

The geological successions, as mapped in the project areas, are summarized in the Table of Lithologic Units - Table 1.

TABLE 1

TABLE OF LITHOLOGIC UNITS

RECENT

- Lake and stream deposits, vegetal deposits.

PLEISTOCENE

- Unconsolidated glacial deposits, clay, silt, sand, gravel, boulders.

PRECAMBRIAN

ARCHEAN

- (6) - Late Intrusive Rocks
  - Granitic Rocks, Granodiorite, Trondhjemite
  - Intrusive Contact
  
- (3) - Metasediments
  - 3a - Argillite
  - 3c - Greywacke
  - 3e - Volcanic Conglomerate
  
- (3) - Intermediate to Felsic Metavolcanics
  - Rhyolite, Dacite
  
- (1) - Mafic Metavolcanics
  - 1a - Flow
  - 1b - Tuff
  - 1c - Tuff Breccia, Agglomerate

BERRY GROUP

INTRODUCTION

The Berry Group is situated in the Whipper Lake Area, Patricia Mining Division. The property consists of 15 unpatented, contiguous mining claims (Figure 2).

Pa 590158*	Pa 590163*	Pa 705962*
159*	164*	963*
160	165	Pa 719551
161*	166	552
162*	705961*	553

\* The geological survey only covered the nine claims designated with an asterisk.

The property is readily accessible by paved Highway 72 to Highway 664, past Hudson then an all-weather gravel road to the Webster turn-off which lies on the south corner of the property.

Linecutting was completed during August, 1983. A total of 9.675 kilometres of lines were cut with section lines at 100 metre intervals off the baseline. The lines were chained with 25 metre stations established.

WEBSTER BAY

Lost Lake



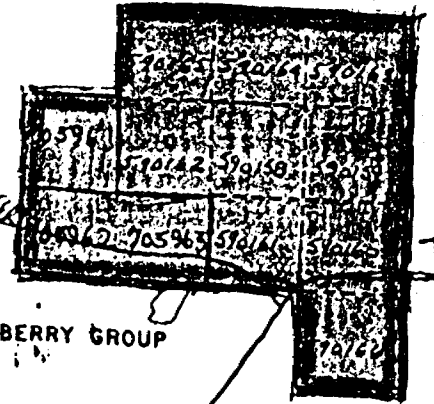
WEBSTER STA

CNR PIPE LINE

Railway

TRY  
MIT 62

GRAVEL  
PILE:  
17488



BERRY GROUP

65M 614 BASE LINE  
MIVEN

64M  
Goodie  
Lake  
(A)

63M

62M

Goodie

HIGHWAY 664

H.E.P.C.

Claim Location Sketch

2 inches to 1 mile

Figure 2

1" = 1/2 mi



## TOPOGRAPHY

The topography of the grid area is very flat with the only elevation changes occurring around the lake in the southwest corner in a large depression and the outcrops representing slight topographic highs. The remainder of the grid area is sandy jack pine flats with large mature jack pine, or recent slash or cut-over area.

## GEOLOGICAL SURVEY

The geological survey was conducted during October/November 1983. All outcrop within the grid area was located and mapped, and pertinent topographic features noted and located relative to the established grid. A total of 9.675 kilometres of grid lines were traversed.

Outcrop was quite sparse in the grid area, about 10 - 15% exposure. The predominate unit observed was a late felsic intrusive (6) granite or trondhjemite. The granite contained large phenocrysts of plagioclase and K-spar. The contact of the granite and volcanics is marked with a pronounced increase in metamorphism of the volcanics. This high grade thermal metamorphism results in an amphibolite grade mineral assemblage. Large blocks and xenoliths of amphibolite and metavolcanic within the granite are common near the contact where granitic material has been intruded parallel to the schistosity.

The rock was mapped as a granite with assimilated mafic volcanic or as a mafic volcanic depending upon the major component. This was found especially in the southeast section of the grid area, lines 6E to 8E, south of the baseline and around the south margin of the granite outcrops mapped in the north central grid area. At L8E, 100S a banded iron formation was located within granitic material. The iron formation was of a high metamorphic grade consisting of massive, coarse-grained magnetite and pyrite with bands of coarse-grained recrystallized chert.

The only other rock type noted was an outcrop of felsic to intermediate volcanic at L5E, 375S.

Outcrop was insufficient for stratigraphic correlation, no top indications were located. A summary of the geology from the little available data indicates a volcanic assemblage with an intruded granitic stock.

## HIGHWAY GROUP

### INTRODUCTION

The Highway Group is situated in Drayton Township, Patricia Mining Division. The property consists of eight unpatented contiguous mining claims (Figure 3).

Pa 590156*	Pa 719548
157*	549
646329*	550
330*	557

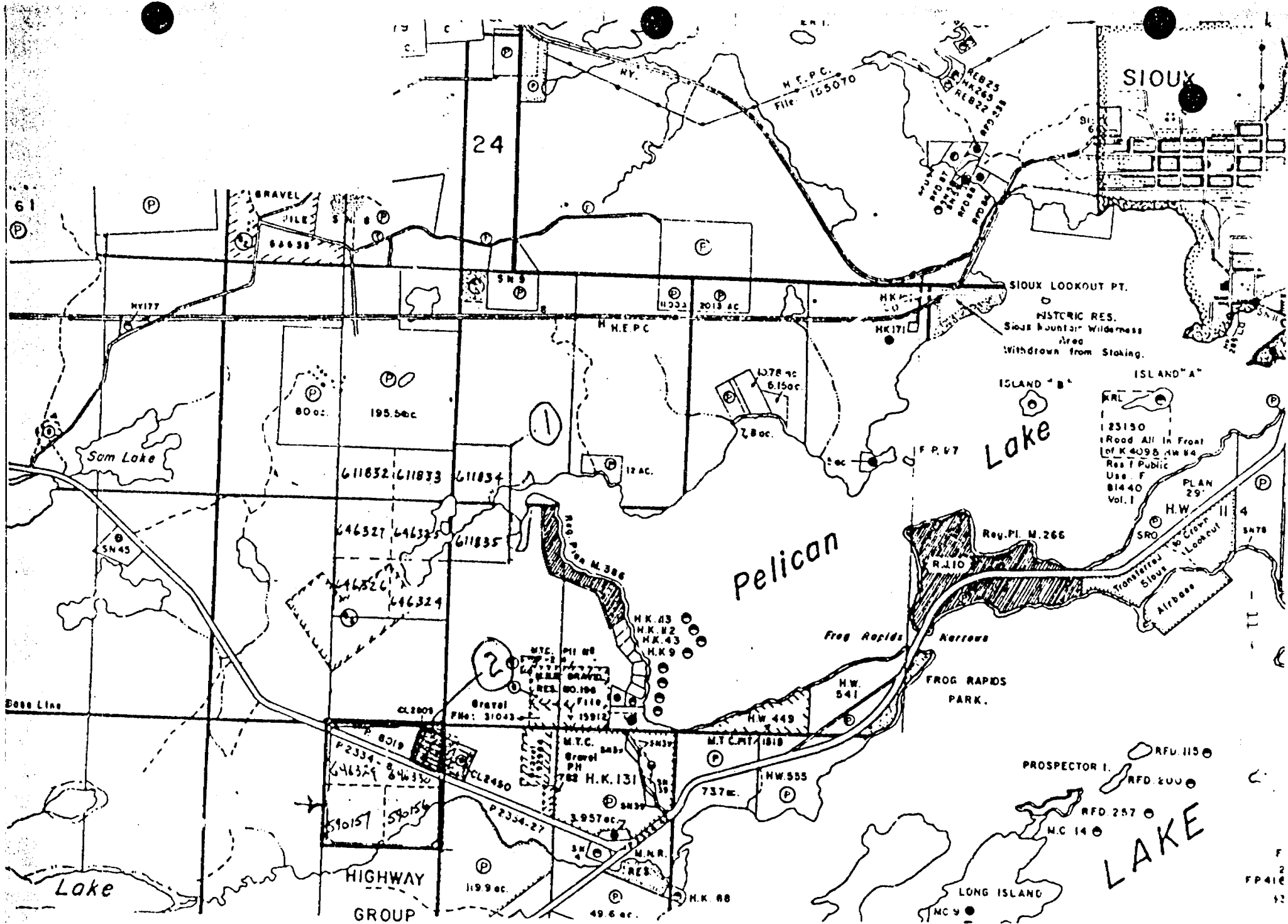
\* The geological survey only covered the claims designated with an asterisk.

The property is readily accessible as paved Highway 664 crosses the northern half of the property.

Linecutting was completed during August, 1983. A total of 6.325 kilometres of lines were cut with section lines at 100 metre intervals off the baseline. The lines were chained with 25 metre stations established.

### TOPOGRAPHY

The topography of the grid area is quite level with the higher elevations being to the north and gently sloping to the south to the river.



CLAIM LOCATION SKETCH  
 2 inches to 1 mile 1" = 1/2 mi

SIoux

SIoux LOOKOUT PT.  
 HISTORIC RES.  
 Sioux Mountain Wilderness  
 Area  
 Withdrawn from Staking.

Lake

Pelican

LAKE

61

24

80 ac.

195.5 ac.

1378 ac.  
 6.15 ac.

28 ac.

12 ac.

611832, 611833, 611834

646327, 646328, 646329

611835

2

CL 2809

P. 8019

P. 2334-8

646329, 646330

59057, 59058

CL 2480

P. 2334-27

1199 ac.

49.6 ac.

M.T.C. 11810

737 ac.

H.W. 555

H.K. 88

H.K. 43  
 H.K. 42  
 H.K. 43  
 H.K. 9

Gravel Pit  
 PH: 31043

M.T.C. 782  
 Gravel Pit  
 H.K. 131

3957 ac.

M.N.R. RES.

F.P. 67

ISLAND "B"

ISLAND "A"

M.R.L.  
 123150  
 Road All in Front  
 of K 4095, H.W. 44  
 Res. F Public  
 Use. F  
 81440  
 Vol. 1

PLAN 29

H.W.

SRO

Frontier to Crown  
 Lookout

SIoux

AL 1000

Reg. Pl. M. 266

R. 110

Frog Rapids Narrows

FROG RAPIDS PARK.

PROSPECTOR I.

RFD 200

RFD 257

M.C. 14

LONG ISLAND

M.C. 9

F 2  
 FP 416  
 52

Provincial Highway 664 and a powerline cross the north half of the property. A Ministry of Transportation garage is in the northeast corner on ground which is reserved from staking.

Vegetation is mainly alders with balsam and poplar.

#### GEOLOGICAL SURVEY

The geological survey was conducted during October/November, 1983. All outcrop within the grid area was located and mapped and pertinent topographic features noted and located relative to the established grid. A total of 6.325 kilometres of grid lines were traversed.

Outcrop was very sparse in the grid area with the only outcrop being along the highway. The only lithology found was metasediment, argillite (3a), greywacke (3c) and volcanic conglomerate (3e). These sediments consist of water-laid material derived from a volcanic source.

Volcanic conglomerate is the most prevalent rock type mapped. It is mainly composed of mafic volcanic pebbles and fragments in a fine-grained, chloritic matrix. Felsic and chertz clasts are also present. Pebble size varies from 1/2 inch to five inches.

The argillite and greywacke are interbedded. The argillites are extremely well layered with layers not exceeding two inches. The greywackes are in thicker beds up to two to three feet, and are structureless. Graded bedding is not well developed in argillites, but suggests that tops are to the north.

The lack of outcrop does not allow for stratigraphic correlation beyond mentioning a sequence of metasediments facing north.

GOODIE CREEK GROUP

INTRODUCTION

The Goodie Creek Group is situated in Lomond Township, Patricia Mining Division. The property consists of nine unpatented contiguous mining claims (Figure 4).

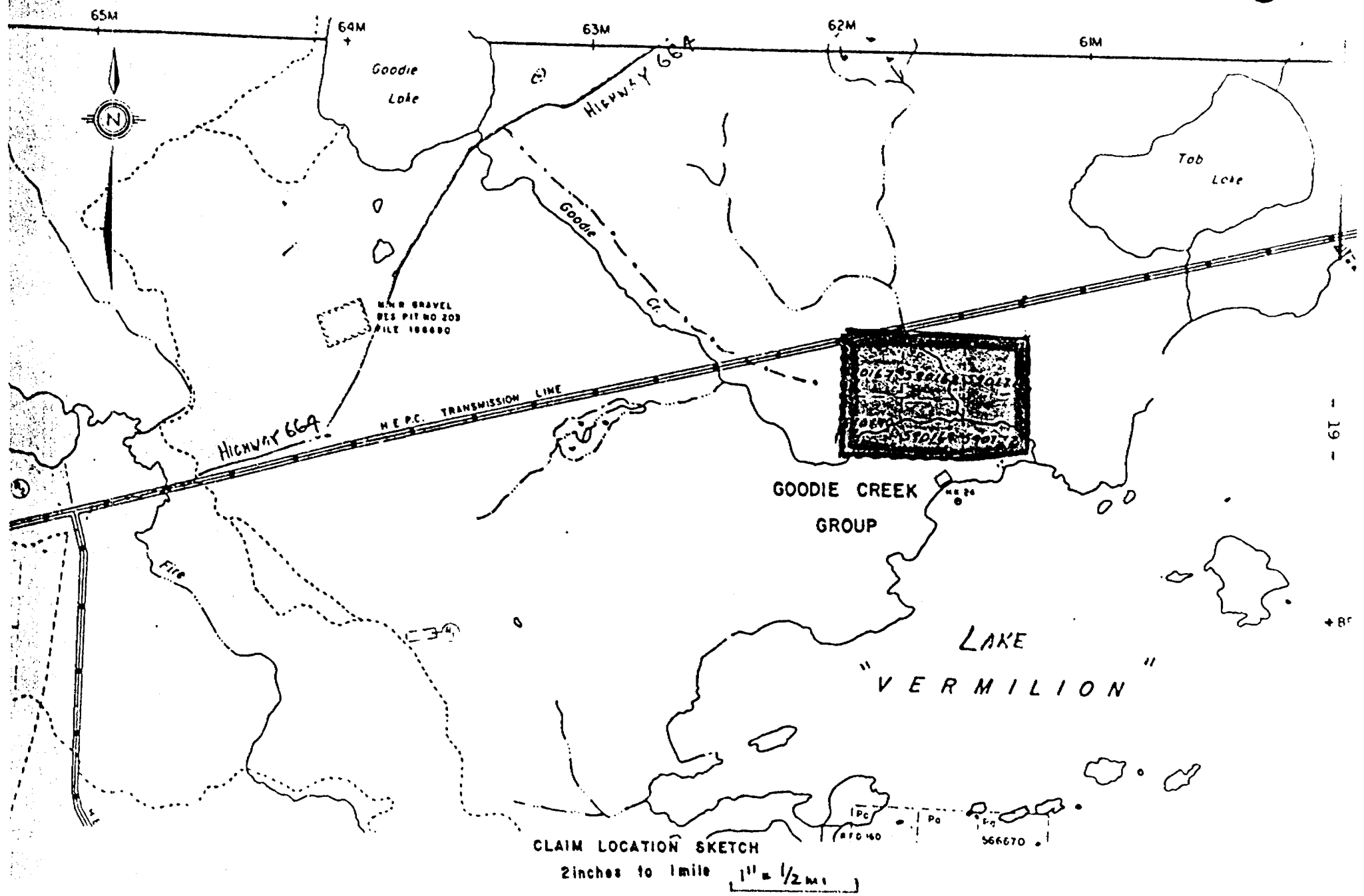
Pa 590167*	Pa 719554
168*	555
169*	556
170*	
171*	
172*	

\* The geological survey only covered the claims designated with an asterisk.

The property is readily accessible by paved Highway 664 through Hudson, then on the all-weather gravel road to Goodie Lake, across from which lies a hydro-access road which leads to within 1/2 kilometre of the property.

Linecutting was completed during August, 1983. A total of 5.425 kilometres of lines were cut with section lines at 100 metre intervals off the baseline. The lines were chained with 25 metre stations established.

# WHIPPER LAKE AREA M-2574



CLAIM LOCATION SKETCH  
2 inches to 1 mile 1" = 1/2 mi



## TOPOGRAPHY

The topography of the grid area is dominated by swamp. Swamp-covered terrain is predominant throughout the central area of the grid where L0 had to be left out due to the open-water swamp. Goodie Creek, through the south portion of the grid has swamp around the creek area. To the north the grid ends at the high voltage power-line.

The grid area to the east of the central swamp is an old cut-over area, now covered with secondary growth, small poplars. To the west the major vegetation is balsam, poplar and spruce.

## GEOLOGICAL SURVEY

The geological survey was conducted during October/November, 1983. All outcrop within the grid area was located and mapped and pertinent topographic features noted and located relative to the established grid. A total of 5.425 kilometres of grid lines were traversed.

Outcrop was extremely sparse in the grid area. The only lithology noted was mafic metavolcanics (1a), mafic flow and (1c) mafic tuff breccia. Mafic tuff breccia was noted at L5W, 175S. The pyroclastics were of andesite, basalt composition with angular fragments to six inches, in a porphyritic crystal matrix.

The fragments are more felsic than the matrix. Also present in the vicinity is mafic flow. This unit is a carbonatized, variolitic and amygdaloidal mafic lava. The variolites are carbonatized with a dark core surrounded by a thin white rim. The weathered surface resembles a tuff as the feldspars stand out relative to the outcrop face. A similar mafic flow rock is also noted at several locations along the powerline to the north of the grid.

The lack of outcrop does not allow for stratigraphic correlation or interpretation.

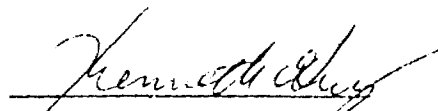
KENNETH GUY EXPLORATION SERVICES

STATEMENT FOR ASSESSMENT WORK

I, Kenneth Guy, certify to the following:

Geological surveys for a total of 21.425 kilometres were carried out on the three properties. The claims are owned by Nahanni Mines Limited and include the following:

<u>BERRY GROUP</u>	Pa 590158, 59	
	Pa 590161 - 64	
	Pa 705961 - 63	9 claims
<u>HIGHWAY GROUP</u>	Pa 590156, 57	
	Pa 646329, 30	4 claims
<u>GOODIE CREEK GROUP</u>	Pa 590167 - 72	6 claims
	TOTAL	<u>19 claims</u>

  
Kenneth Guy, Geologist



CERTIFICATE

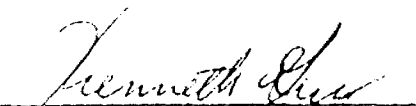
I, the undersigned, Kenneth Guy, residing at 180 Nadine St., South Porcupine, Ontario, graduated with a Bachelor of Applied Science, degree in Earth Science - Geology from the University of Waterloo, Waterloo, Ontario in 1978.

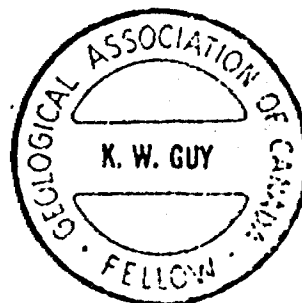
I have been employed in the field of Geology since graduation in 1978.

I am a fellow of the Geological Association of Canada.

I do not hold, nor do I expect to receive an interest of any kind in these claims held by Nahanni Mines Limited, nor in any other mining claims they may have.

Timmins, Ontario  
December, 1983

  
Kenneth Guy, Geologist





52J04SW8927 2.6286 DRAYTON

Natural Resources

File \_\_\_\_\_

300 GEOLOGICAL - GEOCHEMICAL DATA STATEMENT

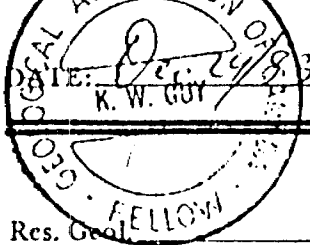
TO BE ATTACHED AS AN APPENDIX TO TECHNICAL REPORT  
FACTS SHOWN HERE NEED NOT BE REPEATED IN REPORT  
TECHNICAL REPORT MUST CONTAIN INTERPRETATION, CONCLUSIONS ETC.

Type of Survey(s) Geological  
Township or Area Drayton/Whipper Lake/Lomond  
Claim Holder(s) Nahanni Mines Limited  
Survey Company Kenneth Guy Exploration  
Author of Report Kenneth Guy  
Address of Author Box 6045 P.M.S., South Porcupine, Ont.  
Covering Dates of Survey Oct. 25/83 to Nov. 12/83  
(linecutting to office)  
Total Miles of Line Cut 6.325

<u>SPECIAL PROVISIONS CREDITS REQUESTED</u>	<u>DAYS per claim</u>
ENTER 40 days (includes line cutting) for first survey.	Geophysical
	- Electromagnetic _____
	- Magnetometer _____
	- Radiometric _____
	- Other _____
ENTER 20 days for each additional survey using same grid.	Geological <u>20</u>
	Geochemical _____

AIRBORNE CREDITS (Special provision credits do not apply to airborne surveys)

Magnetometer \_\_\_\_\_ Electromagnetic \_\_\_\_\_ Radiometric \_\_\_\_\_  
(enter days per claim)



SIGNATURE: Kenneth Guy  
Author of Report or Agent

Res. Geol. Qualifications 2.5778

Previous Surveys

File No.	Type	Date	Claim Holder

**MINING CLAIMS TRAVERSED**  
List numerically

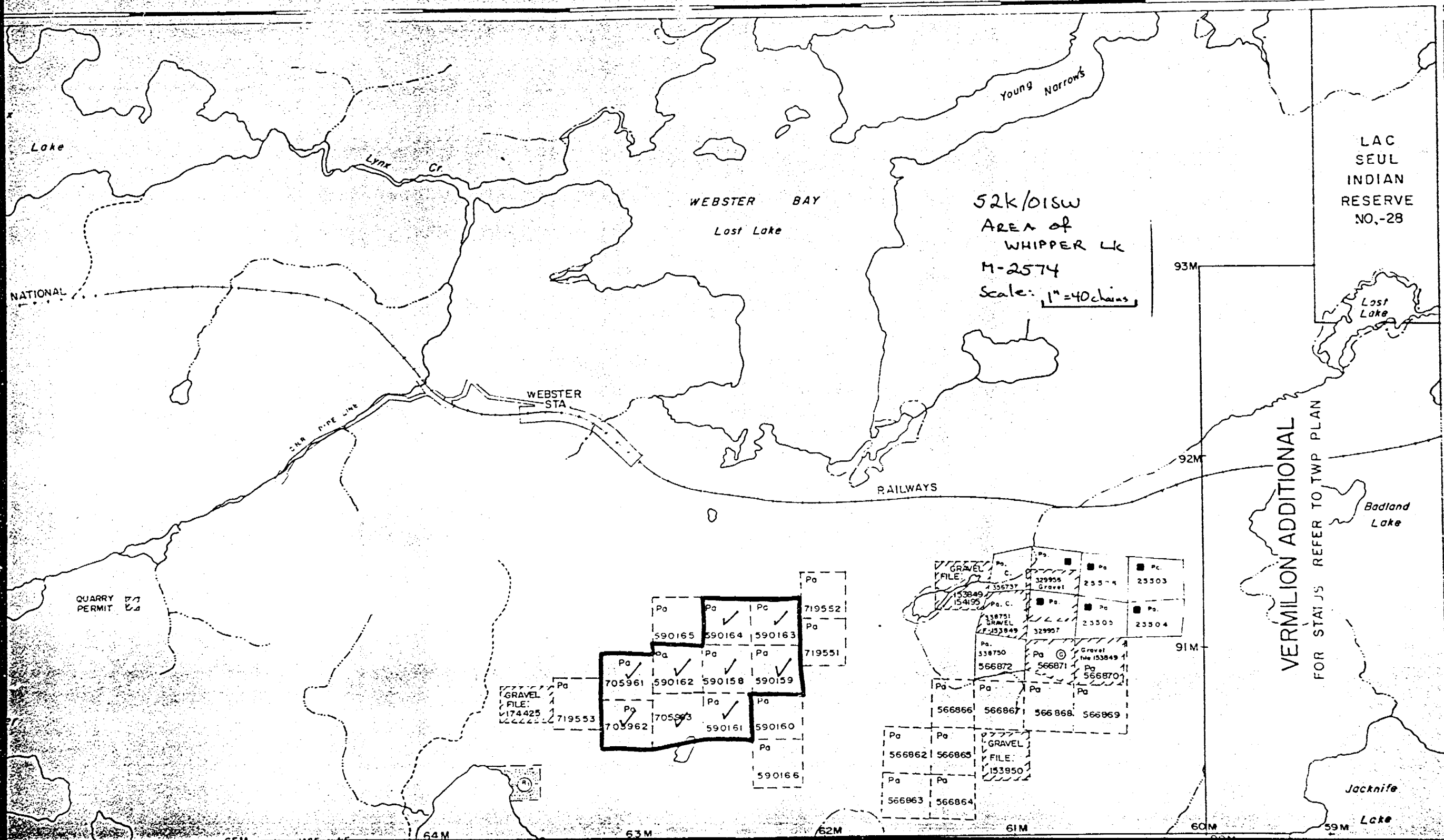
Pa-590156 ✓
(prefix) (number)
590157 ✓
646329 ✓
646330 ✓
Pa-590158 ✓
590159 ✓
590161 ✓
590162 ✓
590163 ✓
590164 ✓
705961 ✓
705962 ✓
705963 ✓
Pa-590167 ✓
590168 ✓
590169 ✓
590170 ✓
590171 ✓
590172 ✓
TOTAL CLAIMS <u>19</u>

If cover insufficient, attach list

OFFICE USE ONLY

VAUGHAN LAKE AREA G-2240

92°15'  
50°7'30"



52k/01SW  
AREA of  
WHIPPER LK  
M-2574  
Scale: 1" = 40 chains

LAC  
SEUL  
INDIAN  
RESERVE  
NO.-28

VERMILION ADDITIONAL  
FOR STAT'S REFER TO TWP PLAN

				Po
	Po	Po	Po	719552
	590165	590164	590163	Po
				719551
	Po	Po	Po	
	705961	590162	590158	590159
	Po	Po	Po	
	705962	705963	590161	590160
				Po
				590166

	GRAVEL FILE: 153849	329955	23304	23303
	329957	23305	23304	
	329957	23305	23304	
	566872	566871	566870	
	566866	566867	566868	566869
	566862	566863		
	566863	566864		

QUARRY PERMIT 17/1

93M

92M

91M

64M

63M

62M

61M

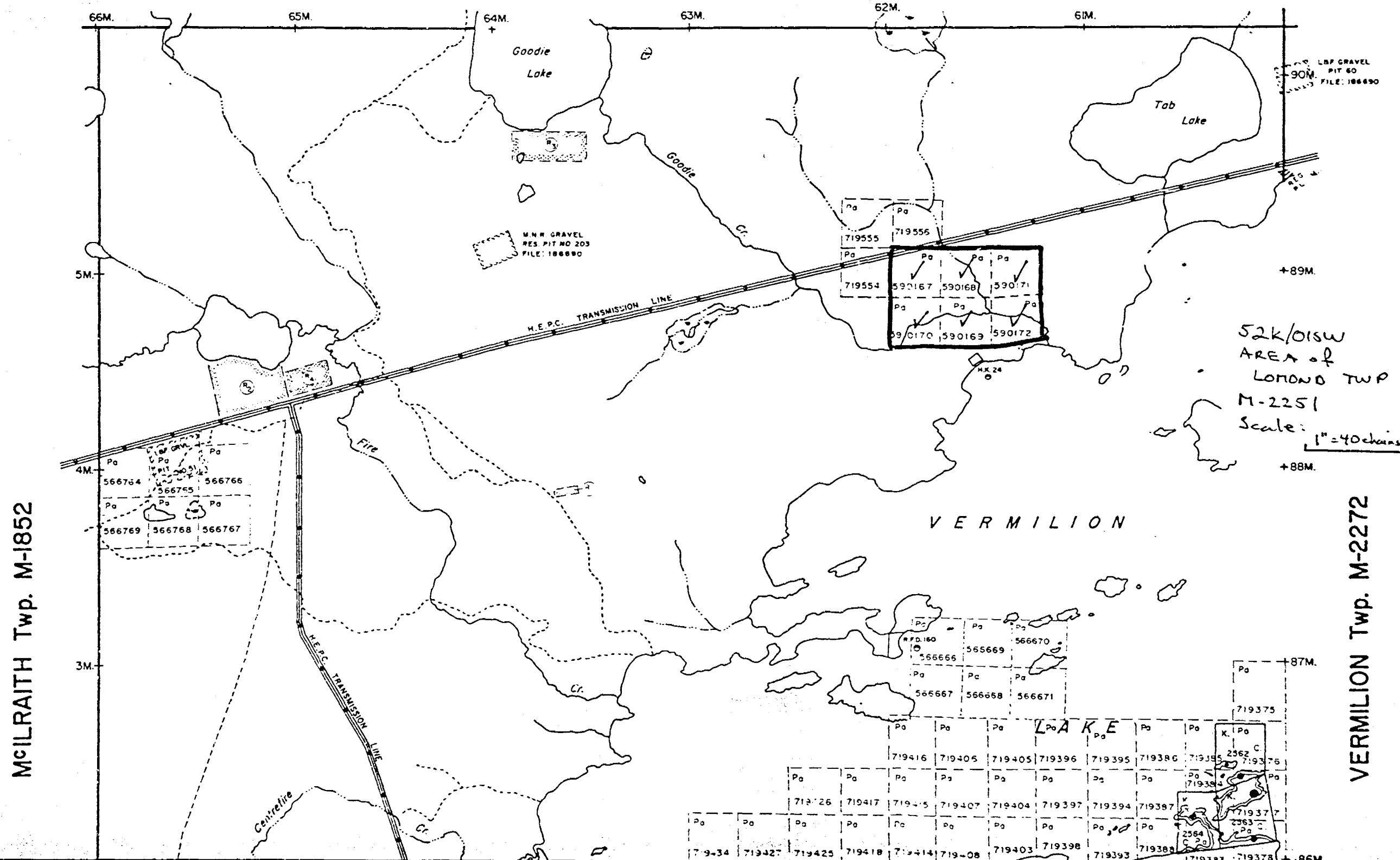
60M

59M

5'

4'

# WHIPPER LAKE AREA M-2574



McILRAITH Twp. M-1852

VERMILION Twp. M-2272

52k/01SW  
AREA of  
LONDON TWP  
M-2251  
Scale: 1"=40 chains

400' surface  
lakes and riv

S.R. - SURFACE RIG  
Order No.

W. 02/79  
W. 3/80  
W. 57/82  
W. 55/82

PATENTED  
LEASE  
LICENSE OF  
CROWN LANDS  
LOCATED IN  
CANCELLED  
MINING RIGHTS  
SURFACE RIGHTS  
HIGHWAYS  
ROADS  
TRAILS  
RAILWAYS  
POWER LINES

REF. 96

Vermilion

Batham Bay

Little Vermilion Lake

Boat Lake

Patura Lake

Hannah Lake

Hay Lake

Troutfish Bay

Minnitak

611874	611875	611876	611877
611878	611879	611880	611881
611882	611883	611884	611885
611886	611887	611888	611889
611890	611891	611892	611893
611894	611895	611896	611897
611898	611899	611900	611901
611902	611903	611904	611905
611906	611907	611908	611909

34	33	32	31	28	27	26	25	24	23	22	21
----	----	----	----	----	----	----	----	----	----	----	----

52J/04SW  
 AREA OF  
 DRAYTON TWP  
 M-2233  
 Scale: 1" = 40 chains

M.T.C. GRAVEL  
 PIT 1298  
 GRAVEL  
 87192 B  
 87193

M.C. 2  
 M.C. 1

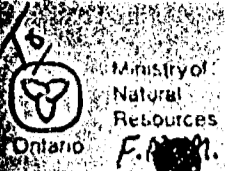
92°00'00"

JORDAN TWP. (M. 2245)

PARNES LAKE AREA M-2150

Jordan Twp.





Report of Work  
(Geophysical, Geological,  
Geochemical and Expenditures)

# 83-134

Instructions - Please type or print.  
- If number of mining claims traversed exceeds space on this form, attach a list.  
Note - Only days credits calculated in the "Expenditure" section may be entered in the "Expend. Days Cr." columns.  
- Do not use shaded areas below.

Feb. 3rd

Mining Lands

The Mining Act

Type of Survey(s) **GEOLOGICAL** Township or Area **DRAYTON Twp M-2233**

Claim Holder(s) **NAHANNI MINES LIMITED** Prospector's Licence No. **T-951**

Address **1107-330 BAY STREET, TORONTO, ONTARIO, M5H 2S8**

Survey Company **KENNETH GUY EXPLORATION** Date of Survey (from & to) **25 10 83 12 11 83** Total Miles of line Cut **6.325**

Name and Address of Author (of Geo-Technical report) **KENNETH GUY, BOX 6045 P.M.S., SOUTH PORCUPINE, ONT., P0N 1K0**

Credits Requested per Each Claim in Columns at right

Special Provisions	Geophysical	Days per Claim
For first survey: Enter 40 days. (This includes line cutting)	- Electromagnetic	
	- Magnetometer	
	- Radiometric	
	- Other	
For each additional survey: using the same grid: Enter 20 days (for each)	Geological	20
	Geochemical	

Man Days	Geophysical	Days per Claim
Complete reverse side and enter total(s) here	- Electromagnetic	
	- Magnetometer	
	- Radiometric	
	- Other	
	Geological	
	Geochemical	

Airborne Credits	Geophysical	Days per Claim
Note: Special provisions credits do not apply to Airborne Surveys.	- Electromagnetic	
	- Magnetometer	
	- Radiometric	

Mining Claims Traversed (List in numerical sequence)

Mining Claim		Expend. Days Cr.	Mining Claim		Expend. Days Cr.
Prefix	Number		Prefix	Number	
Pa	590156	20			
	590157	20			
	646324	20			
	646330	20			

RECEIVED

MINING LANDS SECTION

PATRICIA MINING DIV.  
RECEIVED  
DEC - 5 1983  
A.M. 7|8|9|10|11|12|1|2|3|4|5|6 P.M.

Expenditures (excludes power stripping)

Type of Work Performed

Performed on Claim(s)

Calculation of Expenditure Days Credits

Total Expenditures \$  + 15 = Total Days Credits

Instructions: Total Days Credits may be apportioned at the claim holder's choice. Enter number of days credits per claim selected in columns at right.

Date **Nov. 25, 1983** Recorder/Holder or Agent (Signature) *[Signature]*

Pa. 590156 Total number of mining claims covered by this report of work. **4**

For Office Use Only

Total Days Cr. Recorded **80** Date Recorded **Dec. 5, 1983** Mining Recorder *[Signature]*

Date Approved **85.5.31** Date of Inspection *[Signature]*

Certification Verifying Report of Work

I hereby certify that I have a personal and intimate knowledge of the facts set forth in the Report of Work annexed hereto, having performed the work or witnessed same during and/or after its completion and the annexed report is true.

Name and Postal Address of Person Certifying **KENNETH GUY, BOX 6045 P.M.S., SOUTH PORCUPINE, ONTARIO P0N 1K0**

Date Certified **NOV. 25, 1983** Certified by (Signature) *[Signature]*



Feb. 3rd

Ministry of Natural Resources  
Report of Work  
(Geophysical, Geological, Geochemical and Expenditures)

#83-135

Instructions: - Please type or print  
- If number of mining claims traversed exceeds space on this form, attach a separate sheet.  
Note: - Only days credits calculated in the "Expenditures" section may be entered in the "Expend. Days Cr." column.  
- Do not use shaded areas below.

2,6286

The Mining Act

Mining Lands

Type of Survey(s) **GEOLOGICAL** Township or Area **M-2574 WHIPPER LAKE AREA**

Claim Holder(s) **NAHANNI MINES LIMITED** Prospector's Licence No. **T-951**

Address **1107-330 BAY STREET, TORONTO, ONTARIO, M5H 2S8**

Survey Company **KENNETH GUY EXPLORATION** Date of Survey (from & to) **25 10 83 12 11 83** Total Miles of Line Cut **9.675**

Name and Address of Author (of Geo-Technical report) **KENNETH GUY, Box 6045 P.M.S., SOUTH PORCUPINE, ONT., P0N 1K0**

Credits Requested per Each Claim in Columns at right

Special Provisions	Geophysical	Days per Claim
For first survey: Enter 40 days. (This includes line cutting)	- Electromagnetic	
	- Magnetometer	
	- Radiometric	
	- Other	
For each additional survey: using the same grid: Enter 20 days (for each)	Geological	20
	Geochemical	

Man Days	Geophysical	Days per Claim
Complete reverse side and enter total(s) here	- Electromagnetic	
	- Magnetometer	
	- Radiometric	
	- Other	
	Geological	
	Geochemical	

Airborne Credits	Geophysical	Days per Claim
Note: Special provisions credits do not apply to Airborne Surveys.	Electromagnetic	
	Magnetometer	
	Radiometric	

Mining Claims Traversed (List in numerical sequence)

Mining Claim			Mining Claim		
Prefix	Number	Expend. Days Cr.	Prefix	Number	Expend. Days Cr.
Pa	590158	20			
	590159	20			
	590161	20			
	590162	20			
	590163	20			
	590164	20			
	705961	20			
	705962	20			
	705963	20			

RECEIVED

MINING LANDS SECTION

PATRICIA MINING DIV.  
RECEIVED  
DEC - 5 1983  
A.M. P.M.  
7 8 9 10 11 12 1 2 3 4 5 6

Expenditures (excludes power stripping)

Type of Work Performed

Performed on Claim(s)

Calculation of Expenditure Days Credits

Total Expenditures \$  + 15 = Total Days Credits

Pa. 590158 Total number of mining claims covered by this report of work. **9**

Instructions

Total Days Credits may be apportioned at the claim holder's choice. Enter number of days credits per claim selected in columns at right.

Date **Nov. 25, 1983** Recorder/holder of Claim (Signature) *[Signature]*

For Office Use Only

Total Days Cr. Recorded **180** Date Recorded **Dec. 5 1983** Mining Recorder *[Signature]*

Date Approved as Recorded **8.5.31** *[Signature]*

Certification Verifying Report of Work

I hereby certify that I have a personal and intimate knowledge of the facts set forth in the Report of Work annexed hereto, having performed the work or witnessed same during and/or after its completion and the annexed report is true.

Name and Postal Address of Person Certifying **KENNETH GUY, Box 6045 P.M.S., SOUTH PORCUPINE, ONTARIO, P0N 1K0**

Date Certified **Nov. 25, 1983** Certified by (Signature) *[Signature]*



Ministry of  
Natural  
Resources  
Ontario

Report of Work  
(Geophysical, Geological  
Geochemical and Expenditures)

#83-136

Instructions -  
2.6286  
Note

Feb. 3rd  
If number of mining claims traversed  
exceeds space on this form, attach a list.  
Only days credits calculated in the  
"Expenditures" section may be entered  
in the "Expend. Days Cr." columns.  
Do not use shaded areas below.

The Mining Act

2.6286

Mineral Lands

Type of Survey(s) <b>GEOLOGICAL</b>	Township or Area <b>LOMOND Twp. M-2251</b>
Claim Holder(s) <b>NAHANNI MINES LIMITED</b>	Prospector's Licence No. <b>T-951</b>
Address <b>1107-330 BAY STREET, TORONTO, ONTARIO, M5H 2S8</b>	
Survey Company <b>KENNETH GUY EXPLORATION</b>	Total Miles of line Cut <b>5.425</b>
Date of Survey (from & to) 25 10 83 12 11 83 Day Mo. Yr. Day Mo. Yr.	
Name and Address of Author (of Geo-Technical report) <b>KENNETH GUY, BOX 6045 P.M.S., SOUTH PORCUPINE, ONTARIO, P0N 1K0</b>	

Special Provisions	Geophysical	Days per Claim
For first survey: Enter 40 days. (This includes line cutting)	- Electromagnetic	
	- Magnetometer	
For each additional survey: using the same grid: Enter 20 days (for each)	- Radiometric	
	- Other	
	Geological	20
	Geochemical	

Man Days	Geophysical	Days per Claim
Complete reverse side and enter total(s) here	- Electromagnetic	
	- Magnetometer	
	- Radiometric	
	- Other	
	Geological	
	Geochemical	

Airborne Credits	Geophysical	Days per Claim
Note: Special provisions credits do not apply to Airborne Surveys.	Electromagnetic	
	Magnetometer	
	Radiometric	

Mining Claims Traversed (List in numerical sequence)			Mining Claims Traversed (List in numerical sequence)		
Prefix	Number	Expend. Days Cr.	Prefix	Number	Expend. Days Cr.
Pa	590167	20			
	590168	20			
	590169	20			
	590170	20			
	590171	20			
	590172	20			

RECEIVED

MINING LANDS SECTION

PATRICIA MINING DIV.  
RECEIVED  
DEC - 5 1983  
A.M. 7:8, 9:10, 11:12, 1:2, 3:4, 5:6 P.M.

Expenditures (excludes power stripping)

Type of Work Performed

Performed on Claim(s)

Calculation of Expenditure Days Credits

Total Expenditures \$  + 15 =  Total Days Credits

Instructions  
Total Days Credits may be apportioned at the claim holder's choice. Enter number of days credits per claim selected in columns at right.

Pa. 590167

Total number of mining claims covered by this report of work.

For Office Use Only	
Total Days Cr. Recorded 120	Date Recorded Dec. 5, 1983
Date Approved as Recorded 64. 4. 14	Mining Recorder <i>[Signature]</i>

Date  
Nov. 25, 1983

Recorded Holder or Agent (Signature)  
*[Signature]*

Certification Verifying Report of Work

I hereby certify that I have a personal and intimate knowledge of the facts set forth in the Report of Work annexed hereto, having performed the work or witnessed same during and/or after its completion and the annexed report is true.

Name and Postal Address of Person Certifying  
**KENNETH GUY, BOX 6045 P.M.S., SOUTH PORCUPINE, ONTARIO, P0N 1K0**

Date Certified  
Nov 25, 1983

Certified by (Signature)  
*[Signature]*



Ministry of  
Natural  
Resources

Geotechnical  
Report  
Approval

File  
26286

Mining Lands Comments

- geology maps are not coloured  
 -- geology maps are not COLOURED

To: Geophysics

Comments

Approved

Wish to see again with corrections

Date

Signature

To: Geology - Expenditures *Mr. C. Kustra.*

Comments

Approved

Wish to see again with corrections

Date *Feb 14 / 83*

Signature *C. Kustra*

To: Geochemistry

Comments

*L.D.*

Approved

Wish to see again with corrections

Date

Signature

To: Mining Lands Section, Room 6462, Whitney Block. (Tel: 5-1380)



1984 01 23

Your File: 134,135,136

Our File: 2.6286

Mr. Albert Hanson  
Mining Recorder  
Ministry of Natural Resources  
P.O. Box 669  
Sioux Lookout, Ontario  
POV 2T0

Dear Sir:

We have received reports and maps for a Geological Survey submitted under Special Provisions (credit for Performance and Coverage) on Mining Claims PA 590156 et al in the Township of Lomond.

This material will be examined and assessed and a statement of assessment work credits will be issued.

Yours very truly,

J.R. Morton  
Acting Director  
Land Management Branch

Whitney Block, Room 6643  
Queen's Park  
Toronto, Ontario  
M7A 1W3  
Phone: (416) 965-1880

A. Barr;Mc

cc: Nahanni Mines Limited  
Suite 1107  
330 Bay Street  
Toronto, Ontario  
M5H 2S8

cc: Kenneth Guy  
Box 6045 P.M.S.  
South Porcupine, Ontario  
PON 1K0

1984 04 05

*Handwritten:* 2.6286  
Your File:  
Our File: 2.6286

Nahinni Mines Limited  
Suite 1107  
330 Bay Street  
Toronto, Ontario  
M5H 2S8

Dear Sirs:

RE: Geological Survey submitted on Mining Claims  
PA 590156 et al in the Township of Lomand

---

Enclosed are the plans, in duplicate, for the above-mentioned survey. Please have the author of the report colour code the designated geological outcrops and return the maps to this office as soon as possible.

For further information, please contact Mr. P.W. Matthews at (416)965-6918.

Yours sincerely,

S.E. Yundt  
Director  
Land Management Branch

Whitney Block, Room 6643  
Queen's Park  
Toronto, Ontario  
M7A 1W3  
Phone: (416)965-6918

M.E. Anderson:mc

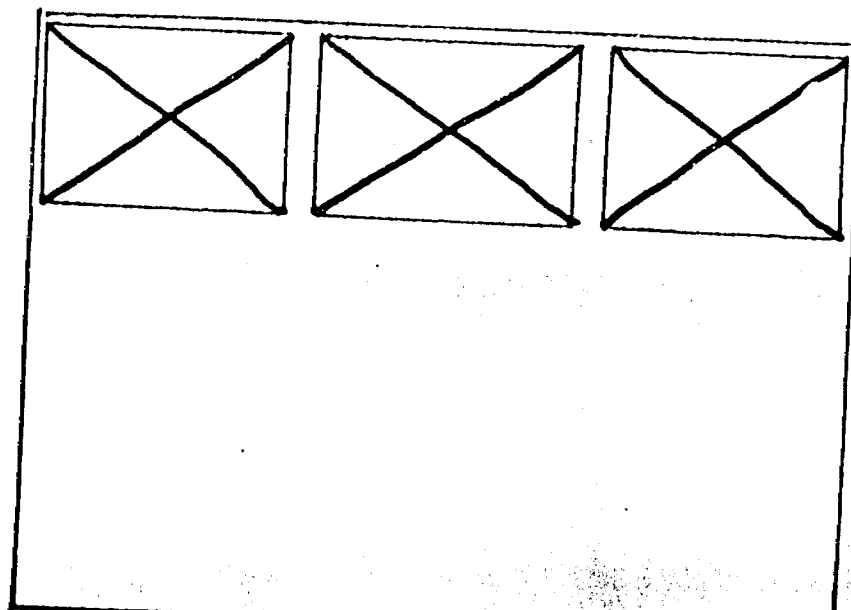
cc: Mining Recorder  
Sioux Lookout, Ontario

SEE ACCOMPANYING  
MAP(S) IDENTIFIED AS

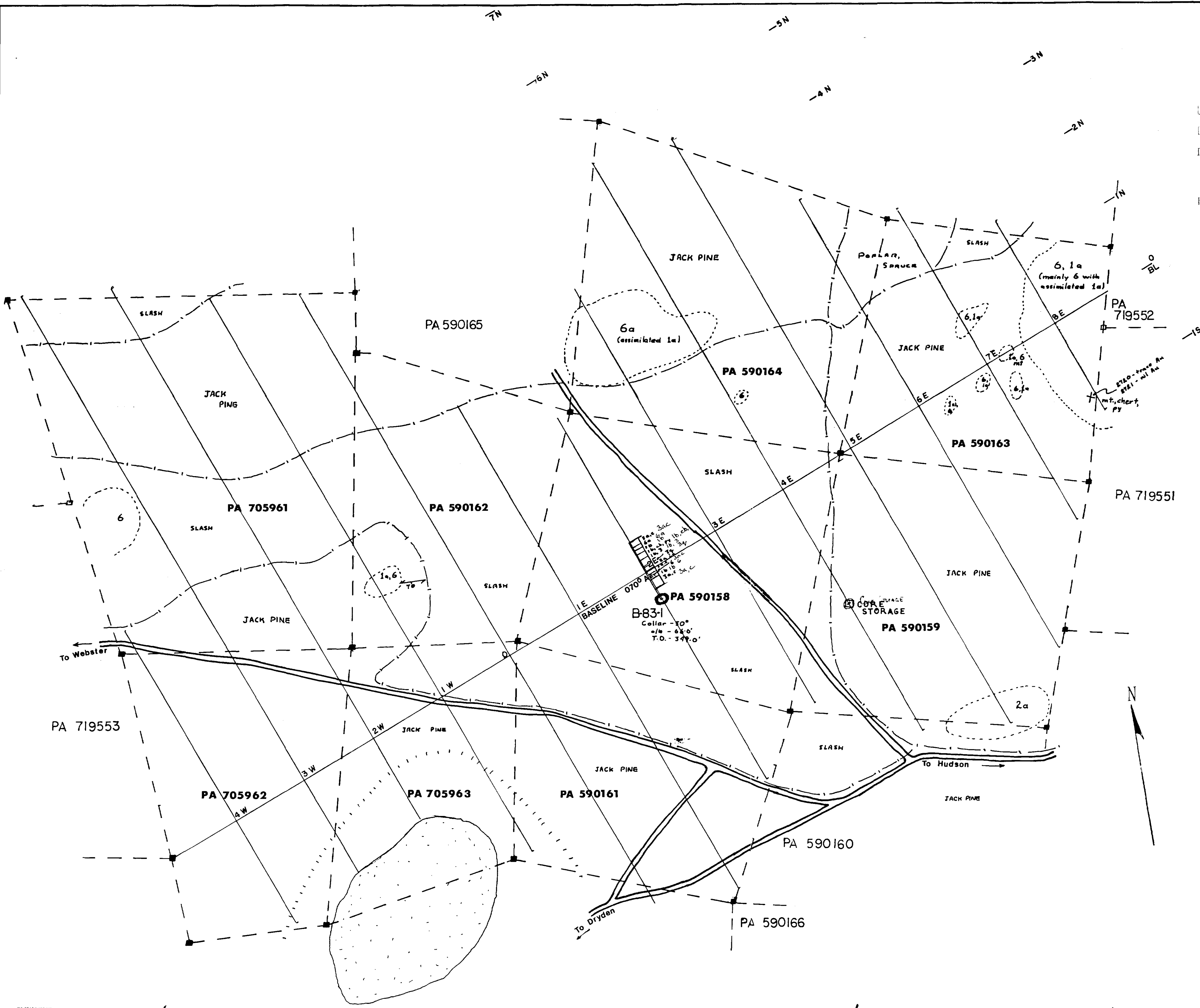
52K/OISW-0033 # 1-3

LOCATED IN THE MAP  
CHANNEL IN THE  
FOLLOWING SEQUENCE

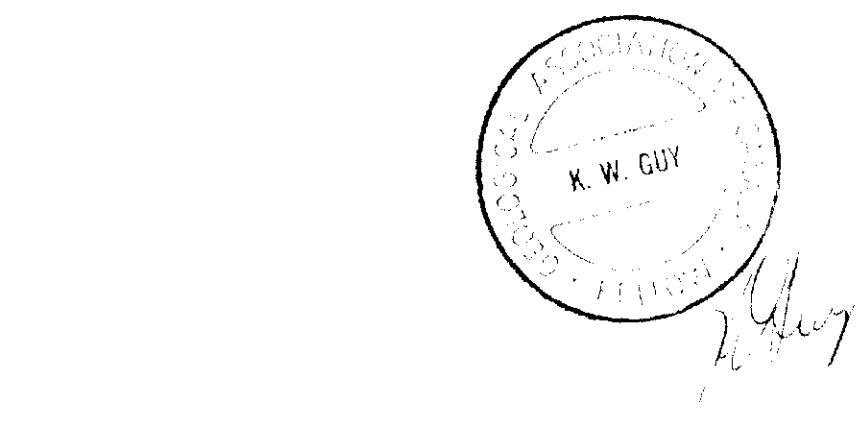
(X)







- LEGEND**
- Metavolcanics**
- 1a Massive Mafic Flows
  - 1b Mafic Tuff
  - 2a Felsic to Intermediate
- Metasediments**
- 3a Argillite
  - 3c Graywacke
  - 3q Quartzite
- Felsic Intrusions**
- 6 Granite
- py - pyrite  
 mt - magnetite  
 X - sample location  
 ch - chert
- SYMBOLS**
- Road
  - Claim Post, located, assumed
  - Claim boundary
  - Lake
  - Vegetation boundary
  - Outcrop
  - Rise in ground
  - Diamond drill hole



**NAHANNI MINES LTD.**

**GEOLOGY**

**Berry Group**

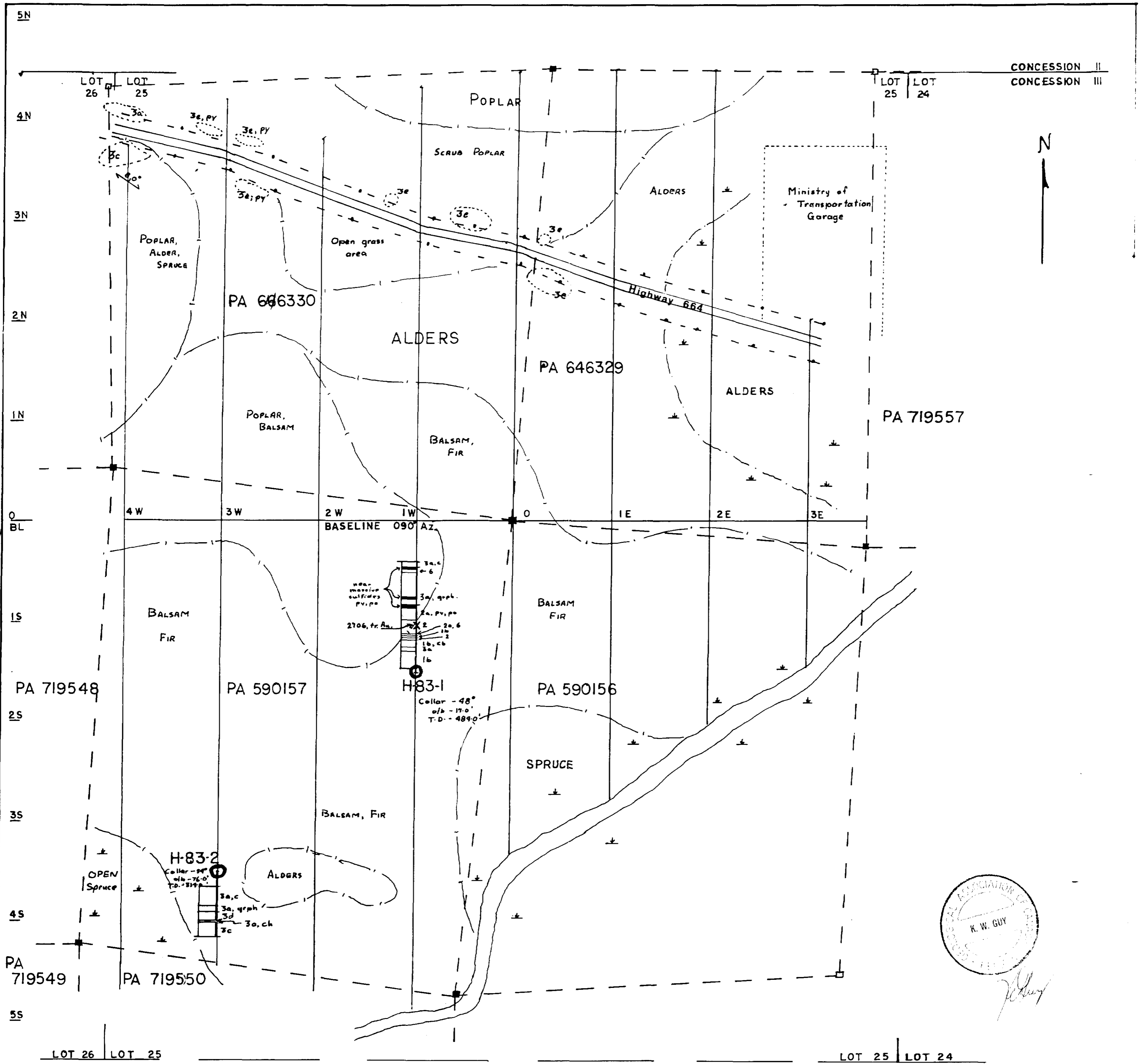
WHIPPER LAKE AREA  
 Patricia Mining Division  
 District Kenora

Geology by K. Guy	SCALE - 1:2500	NTS 52 J/4
Drawn by D.E.G.		Date December 1983

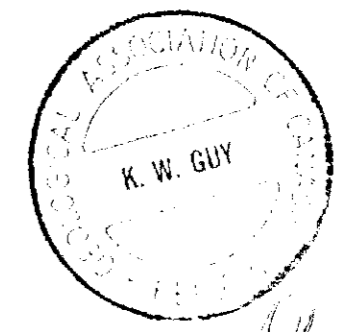


200

52K/01SW-0033, #1



CONCESSION II  
CONCESSION III



**LEGEND**

METAVOLCANICS		METASEDIMENTS		FELSIC INTRUSIVES	
909	2a Felsic to Intermediate	3a	Argillite	939	6 Granite
	1a Massive mafic flows	3c	Greywacke	903	
910	1b Mafic tuff	3e	Volcanic Conglomerate	944	
		3d	Conglomerate	917	
		py	pyrite	ch	chert
		graph	graphite		
		po	pyrrhotite		

**Symbols**

- - - Power Line
- ~ - - - - - Creek
- ▲ Swamp
- Outcrop
- ⊙ Claim Post, located, assumed
- - - - - Vegetation boundary
- == Road
- - - - - Claim boundary
- ↘ Schistosity, dip
- ⊙ Diamond Drill hole

**NAHANNI MINES LTD.**

**GEOLOGY  
Highway Group**

DRAYTON TWP.

Patricia Mining Division

District Kenora

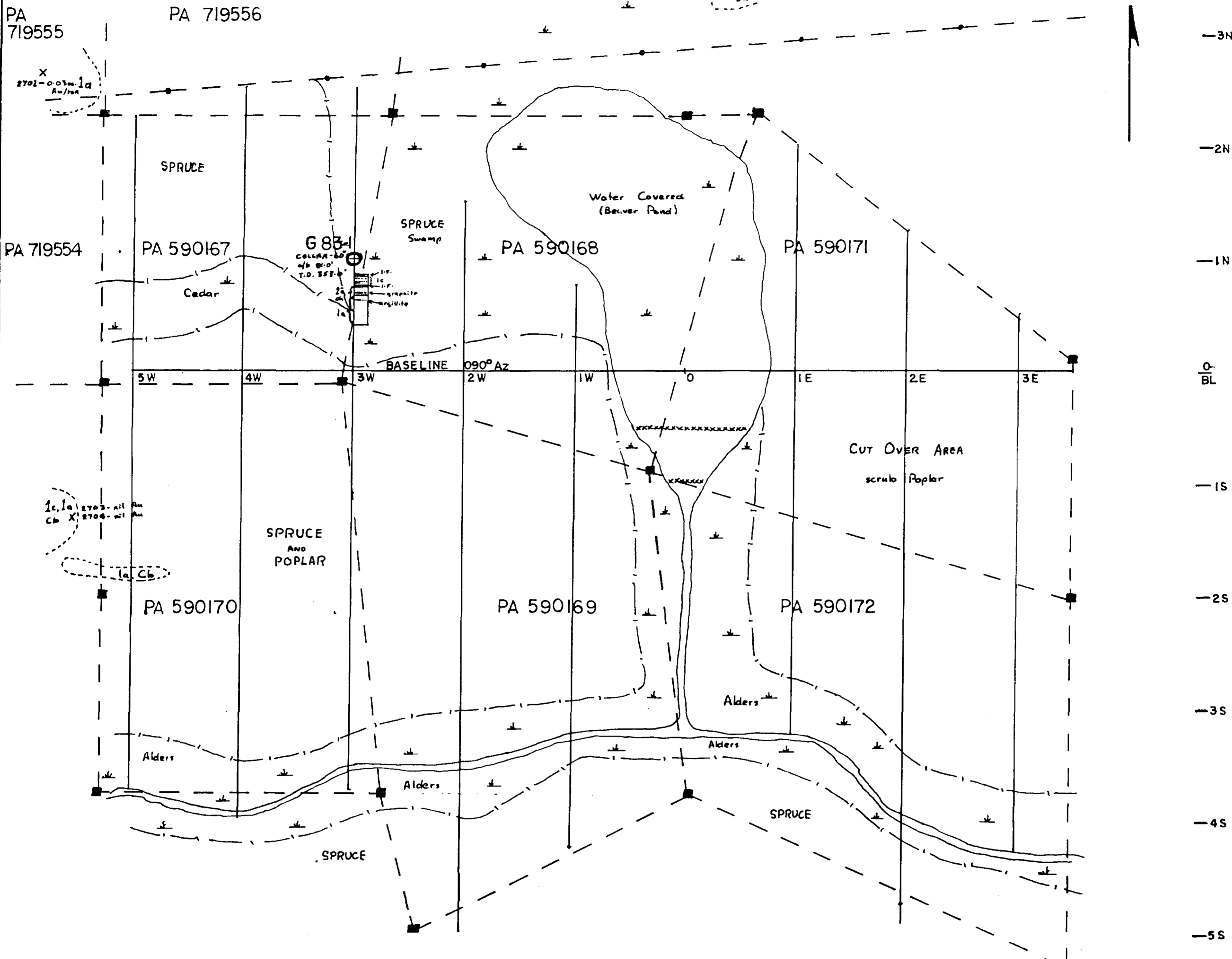
GEOLOGY By K. Guy	Scale - 1:2500	NTS 52J/4
DRAWN By D.E.G.		DATE December 1983



210

52K/OISW-0033, #2

2.6286



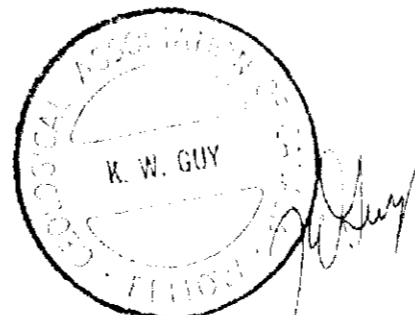
**LEGEND**

**METAVOLCANICS**

- 1a Mafic flows
- 1c Mafic tuff, breccia
- Cb Carbonate
- 2a Felsic to Intermediate
- I-F Iron Formation
- ch Chert

**Symbols**

- Swamp
- Claim Post, located, assumed
- Claim Line (boundary)
- Vegetation boundary
- Outcrop
- Hydro electric Power Line
- Beaver Dam
- Diamond Drill hole



**NAHANNI MINES LTD.**

**GEOLOGY  
Goodie Creek Group**

LOMOND TWP.

Patricia Mining Division  
District Kenora

Geology by K. Guy	Scale - 1:2500	NTS 52J/4
Drawn by: D.S.C.		DATE December 1983



220

52K/01SW-0033 #3

2.6286