



010

Diamond Drilling

Area Grebe Lake

Report NQ 19

Work performed by: Raylloyd Resources Ltd. & Ram Petroleums Ltd. & Raymond & Ramsay

Claim NQ	Hole NQ	Footage	Date	Note
PA 436359	J6-1	425	June/83	(1) (2)
PA 436367	L7-1	456	May/83	(1) (2)
PA 437125	L7-2	274	June/83	(1) (2)
PA 437124	K9-1	400	May/83	(1) (2)
PA 486375-6	K7-1	400	June/83	(1) (2)
PA 437120	W-1	400	July/83	(1) (2)
PA 437120	W-2	400	July/83	(1) (2)
PA 437121	W-3	320	July/83	(1) (2)
PA 437121	W-4	325	July/83	(1) (2)
PA 437121	W-5	256	July/83	(1) (2)
PA 437121	W-6	250	Aug/83	(1) (2)
PA 437121	W-7	350	Aug/83	(1) (2)
PA 437121	W-8	437	Aug/83	(1) (2)
PA 437121	W-9	343	Aug/83	(1) (2)
PA 437121	W-10	282	Aug/83	(1) (2)
PA 437121	W-11	377	Aug/83	(1) (2)

16DH

5695

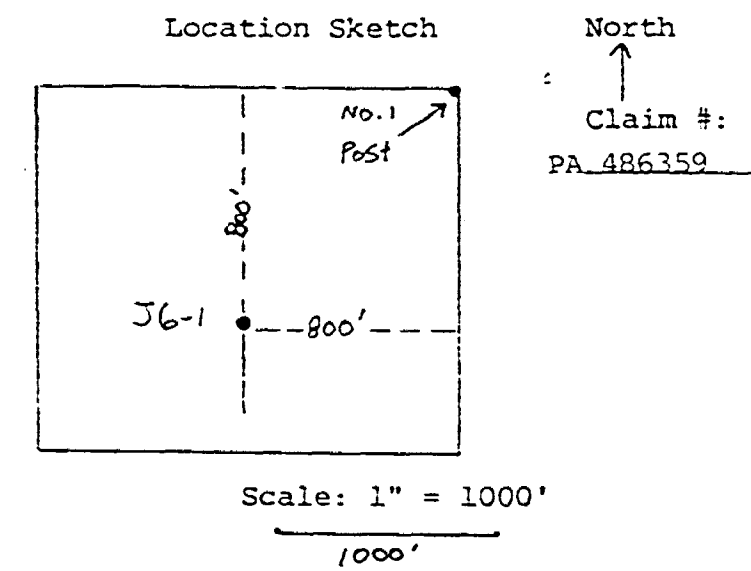
Notes: (1) #56-84 (2) See OMEP Submittal OM83-2-P-64: #63.4401

G.M. HOGG & ASSOCIATES LTD.

DIAMOND DRILL RECORD

HOLE NO. J6-1 Pg 1 of 1

Hole No. <u>J6-1</u> Sheet <u>1</u>	Length <u>425.0</u> ft	Commenced <u>June 23/83</u>	Dip: Collar <u>-45°</u>
Property <u>Raylloyd Res, Wiggles</u>	Bearing Az <u>180°</u>	Completed <u>June 26/83</u>	Etch Test Depth Rdg. <u>True</u>
Township <u>McCubbin Twp. Cx</u>	Dip <u>-45°</u>	Drilling Co. <u>Bradley Bros Ltd</u>	
Location <u>South Grid, Line 20</u>	Objective <u>To</u>	Core Size <u>AQ</u>	
<u>22+00' North</u>	<u>test a magnetic</u>	Casing Left in Hole <u>No</u>	
	<u>& VLF-EM anomaly</u>		
	<u>area</u>		



Remarks _____

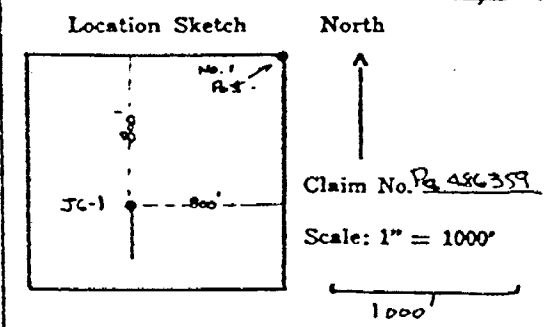
Footage		DESCRIPTION	Sample No.	From	To	Length				
From	To									
0.0'	38.0'	Casing								
38.0'	425.0'	Gravwacke, tuffaceous. Gray-green schistose rock. Banding at 60° to c.a. at 40.0', changing to 50° to c.a. by 50.0'. Minor tuffaceous bands with very minor pyrite.								
		70.0' - 108.0' Core becomes very blocky, broken. Possible shear zone. Banding in this area is at about 60° to c.a.								
		Note minor ctz veining at 129.0' and 144.0' with broken core from 144.0'-145.0'. At 145.0' sanding lies at 45° to 50° to c.a.								
		229.0'-231.0' Minor brecciated zone.								
		At approximately 260.0 ft core becomes very blocky and broken becoming progressively more so through the next 150.0 ft., esp. at 276.0'-293.0' and 315.0'-330.0'.								
		Note quartz veining at 341.0'-342.0'								
		Banding in lower part of hole steepens to 60° to c.a.								
425.0'		End of hole								

**DUPLICATE COPY
POOR QUALITY ORIGINAL
TO FOLLOW**

DIAMOND DRILL RECORD

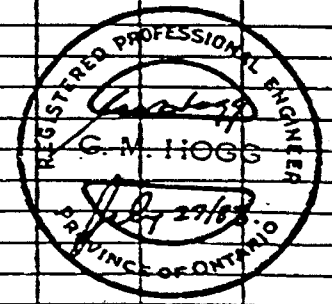
Hole No. JG-1 Sheet 1

Hole No. <u>JG-1</u>	Sheet <u>1</u>	Length <u>425.0 ft</u>	Commenced <u>JUNE 23 1983</u>	Dip: Collar <u>-45°</u>
Property <u>RAYMOND RES., NIGGIE CR.</u>	Bearing <u>Az. 180°</u>	Completed <u>JUNE 26 1983</u>	Drilling Co. <u>BEADLEY RES. LTD.</u>	Etch Test
Township <u>1/2 CUBON TWP., ONT.</u>	Dip <u>-45°</u>	Core Size <u>40</u>	Casing Left in Hole <u>No.</u>	Depth
Location <u>SOUTH GRID, LINE 20E, 22400' North</u>	Objective <u>To test a magnetic and VLF-EM anomaly area.</u>			Rdg.
				True

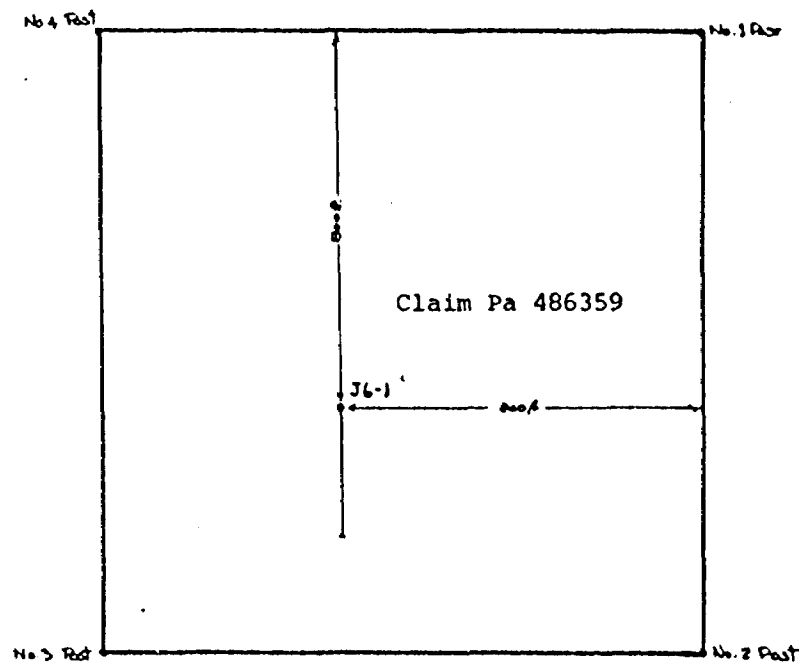


Remarks _____

Footage		DESCRIPTION	Sample No.	From	To	Length
From	To					
0.0'	38.0'	CASING				
38.0'	425.0'	Graywacke, tuffaceous gray-green schistose rock. Banding at 60° to c.a. at 110.0', changing to 50° to c.a. by 30.0'. Minor tuffaceous sands with very minor pyrite. 70.0'-108.0' Core becomes very blocky, broken. Possible shear zone. Banding in this area in at about 60° to c.a. Note: minor qty. veining at 129.0' and 144.0' with broken core from 144.0'-145.0'. At 145.0' sanding line at 45° to 50° to c.a. 229.0'-231.0' Minor baccinated zone. At approximately 260.0 ft core becomes very blocky and broken, becoming progressively more so through the next 150.0 ft, esp. at 276.0'-293.0', and 315.0'-330.0'. Note quartz veining at 341.0'-342.0'. Banding in lower part of hole steepens to 60° to c.a. End of hole.				
425.0'						



N



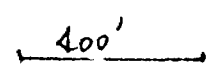
Raylloyd Resources Ltd.

WIGGLE CREEK PROPERTY, McCUBBIN
TOWNSHIP, ONTARIO

Location Sketch, Drill Hole

J6-1

Scale: 1" = 400 ft.



GMH, July, 1983.

G. M. HOGG & ASSOCIATES LTD.

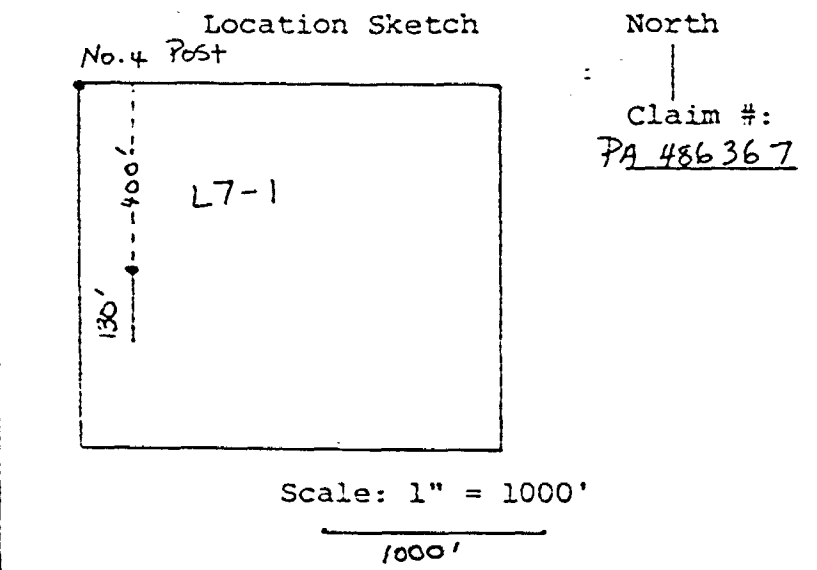
G.M. HOGG & ASSOCIATES LTD.

DIAMOND DRILL RECORD

HOLE NO. L7-1 Page 1

of 1

Hole No. <u>L7-1 Sheet 1</u>	Length <u>456.0 ft.</u>	Commenced <u>May 27/83</u>	Dip: Collar <u>-45°</u>
Property <u>Raylloyd Res, Wiggle</u>	Bearing <u>Az 180°</u>	Completed <u>May 30/83</u>	Etch Test Depth Rdg. <u>True</u>
Township <u>McCubbin Twp, Ont</u>	Dip <u>-45°</u>	Drilling Co. <u>Bradley Bros Ltd</u>	
Location <u>South Grid, Line</u>	Objective <u>To test</u>	Core Size <u>AQ</u>	
<u>4W, 18+00' south</u>	<u>a strong VLF-EM</u>	Casing Left in Hole <u>No</u>	
	<u>anomaly</u>		



Remarks _____

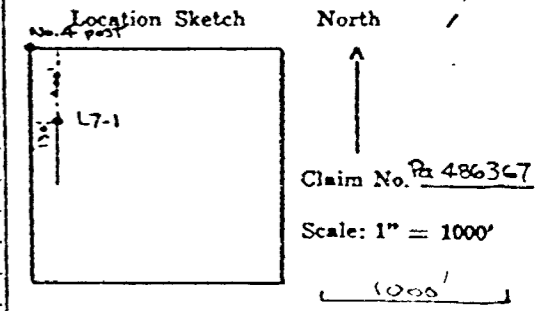
Footage		DESCRIPTION	Sample No.	From	To	Length				
From	To									
0.0'	57.0'	Casing								
57.0'	317.0'	Argillite. Dark schistose rock with graphitic sections and minor arenaceous sections. Minor pyrite common on schist plane. Banding variable, about 45° to core axis on average.								
		115.0-135.0' Highly graphitic section. Crenulated								
		193.0-195.0' Highly graphitic section with minor pyrite on schist planes.								
		From 235.0' graphitic zones 1' to 5' wide occur in argillite. Minor pyrite mineralization, throughout. Banding is variable, but at 45° to c.a. on average.								
		285.0-287.0' - brecciated section.								
317.0'	340.2'	Cherty, dark gray rock, tuffaceous in part. Quartz veining common, and rock often has brecciated appearance.								
		325.5'-327.0' Diorite dike, schistose.								
		333.5'-336.5' Diorite dike, schistose.								
340.2'	398.5'	Argillite as above. Banded at about 45° to c.a. by 375.0', banding has steeped to 55° to c.								
		379.0-381.0 Tuff band? Rock carbonatized and pyrite.								
398.5'	456.0'	Diorite, green and schistose near contact. Becomes massive & coarse grained by 405.0'. Contact and schistosity at 60° to c.a.								
		421.5'-428.0' Cherty band		432.5'-433.5'						
		435.0'-436.5' Cherty band		437.5'-439.0'						
		From 440.0' the diorite becomes finer grained, but remains massive.								
456.0'		END OF HOLE								

**DUPLICATE COPY
POOR QUALITY ORIGINAL
TO FOLLOW**

DIAMOND DRILL RECORD

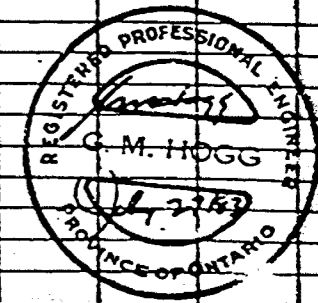
Hole No. L7-1 *Page 1 of 1*

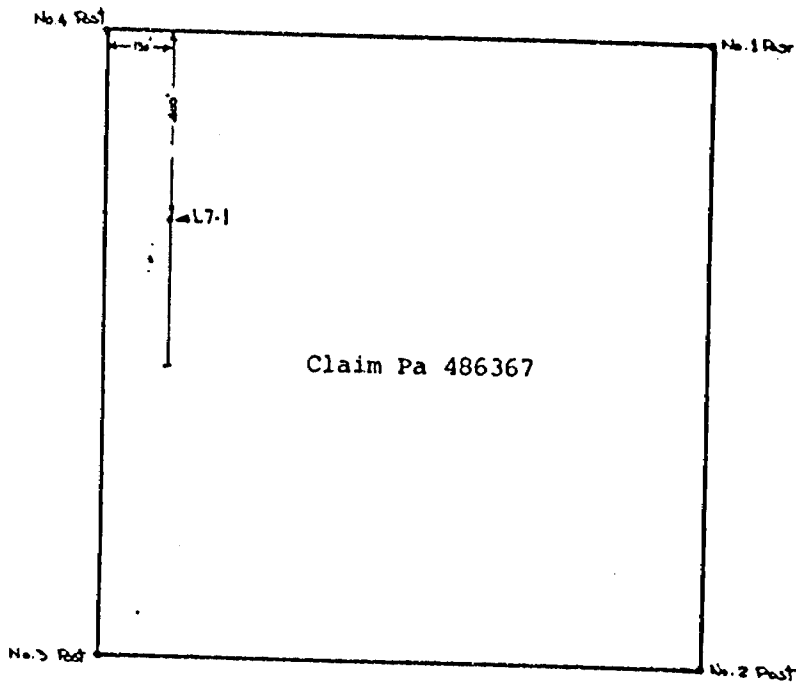
Hole No. <u>L7-1</u> Sheet <u>1</u>	Length <u>456.0ft.</u>	Commenced <u>MAY 27 1983</u>	Dip: Collar <u>-45°</u>
Property <u>RAYLOYD RES., WIGGLE CR.</u>	Bearing <u>Az. 180°</u>	Completed <u>MAY 30 1983</u>	Etch Test Depth Rdg. True
Township <u>McCUBBIN TWP., ONT.</u>	Dip <u>-45°</u>	Drilling Co. <u>BRADLEY BRAS. LTD.</u>	
Location <u>SOUTH GRID, LINE 4W, 18+00' SOUTH.</u>	Objective <u>To test a strong VLF-EM anomaly.</u>	Core Size <u>AQ</u>	
		Casing Left in Hole <u>No.</u>	



Remarks _____

Footage		DESCRIPTION	Sample No.	From	To	Length													
From	To																		
0.0'	57.0'	CASING.																	
57.0'	317.0'	ARGILLITE. Dark schistose rock with graphitic sections and minor arsenic sections. Minor pyrite common on schist planes. Bedding variable, about 45° to core axis on average. 115.0' - 135.0' Highly graphitic section. Crinuloid. 143.0' - 195.0' Highly graphitic section w/ minor pyrite on schist planes. From 235.0' graphitic zones 1' to 5' wide occur in argillite. Minor pyrite mineralization throughout. Bedding is variable, but at 45° to c.a. on average. 285.0' - 287.0' - brecciated section.																	
317.0'	340.2'	Cherty, dark grey rock, tuffaceous in part. Quartz veining common and rock often has brecciated appearance. 325.5' - 327.0' Diorite dike, schistose. 333.5' - 336.5' Diorite dike, schistose.																	
340.2'	398.5'	ARGILLITE, as above. Banded at about 45° to c.a. By 375.0' banding has steepened to 55° to c.a. 379.0' - 381.0' Tuff band? Rock carbonized and pyritic.																	
398.5'	456.0'	Diorite, green and schistose near contact. Becomes massive and coarse grained by 405.0'. Contact and schistosity at 60° to c.a. 421.5' - 428.0' Cherty band. 432.5' - 433.5' Cherty band. 435.0' - 436.5' Cherty band. 437.5' - 439.0' Cherty band. From 440.0' the diorite becomes fine grained, but remains massive.																	
456.0'		End of hole																	

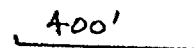




GMH, July, 1983.

Raylloyd Resources Ltd.
WIGGLE CREEK PROPERTY, McCUBBIN
TOWNSHIP, ONTARIO
Location Sketch, Drill Hole

L7-1
Scale: 1" = 400 ft.

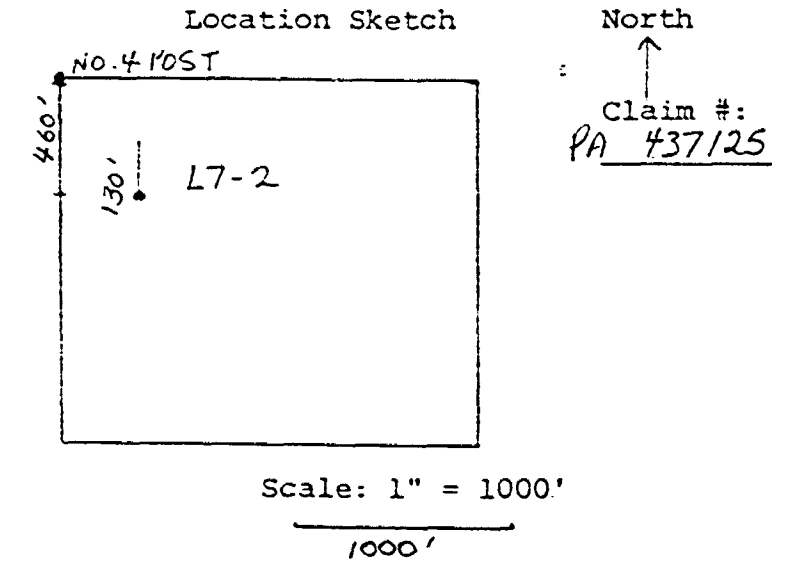


G.M. HOGG & ASSOCIATES LTD.

DIAMOND DRILL RECORD

HOLE NO. L7-2 Page 1
of 1

Hole No. <u>L7-2 Sheet 1</u>	Length <u>274.0 ft</u>	Commenced <u>June 20/83</u>	Dip: Collar <u>-60°</u>
Property <u>Raylloyd Res, Wiggle</u>	Bearing <u>Az 0°</u>	Completed <u>June 21/83</u>	Etch Test Depth Rdg. <u>True</u>
Township <u>McCubbin Twp, Ont</u>	Dip <u>-60°</u>	Drilling Co. <u>Bradley Bros Ltd</u>	
Location <u>South Grid Line</u>	Objective <u>To test</u>	Core Size <u>AQ</u>	
<u>16W, 19+20' South</u>	<u>a strong VLF-EM</u>	Casing Left in Hole <u>No</u>	
	<u>anomaly</u>		



**DUPLICATE COPY
POOR QUALITY ORIGINAL
TO FOLLOW**

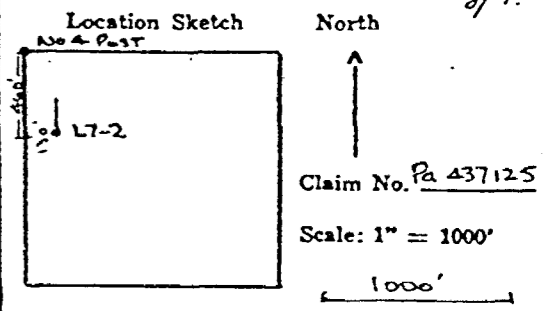
Remarks

Footage		DESCRIPTION	Sample No.	From	To	Length	Au ppb	Ag ppm	Cu ppm	Zn ppm	Pb ppm
From	To										
0.0'	82.5'	Casing									
82.5'	146.5'	Graphitic, schist, argillite. Banding at 10° to parallel to core axis. A few narrow tuffaceous seams. Minor pyrite as shear planes.	8729	105.0'	109.0'	4.0'	3.2				
146.5'	166.5'	Gray, tuff. schistosity at 10° to parallel to core axis. Narrow qtz veining at 151.5'-152.0', 153.0'-153.3', 161.5'-166.5', parallel to c.a.									
166.5'	181.5'	Argillite, some graphitic and some tuffaceous sections, and pyrite rich bands, banding sub-parallel to c.a.									
181.5'	219.0'	Dioritic rock, sheared. Possible fault contact. Rock is schistose at about 10° to c.a. Variable pyrite (low) on schist planes. 3 inch quartz vein at 192.0' and 193.5'. Note - pyrite to 16% from 205.0'-208.0'. Rock becomes increasingly schistose and carbonated with depth.	8728	194.0'	195.5'	1.5'	8				
219.0'	242.0'	Diorite(?) highly schistose. Some qtz-carbonate veinlets and argillitic sections. Banding steepens to 30° to c.a. by 225.0'. Disseminated pyrite, trace cov 238.0'-239.0'.	8730	238.0'	239.5'	1.5'	56				
242.0'	271.2'	Graphite schist, argillitic sections. Banding approx. parallel to core axis. Pyrite in bands, disseminations, nodules up to 25% in contact area. From 256.0' to 271.0' core is broken and there is core loss (4.0 ft.) At 271.0' there is some vuggy quartz.	8731 8732	242.0' 243.0'	243.0' 247.0'	1.0' 4.0'	34 42	0.4 0.5	175	500	104
271.2'	274.0'	Tuffaceous argillite, banding at 20° to c.a. Some disseminated pyrite									
274.0'		END OF HOLE									

DIAMOND DRILL RECORD

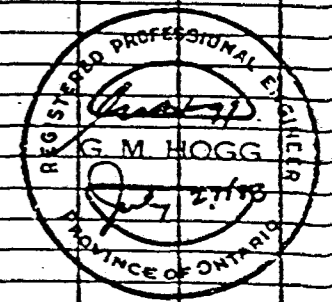
Hole No. L7-2 Page 1 of 1

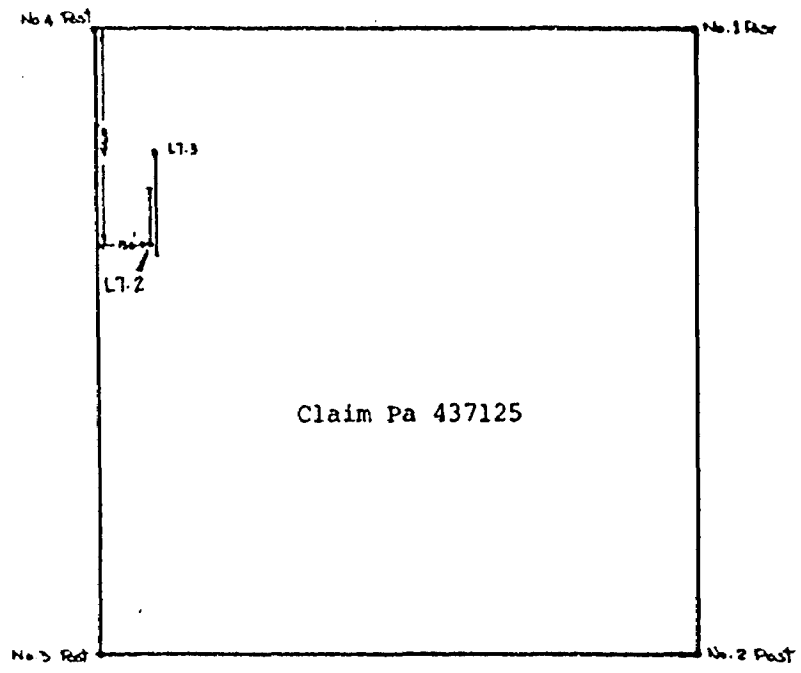
Hole No. <u>L7-2</u> Sheet <u>1</u>	Length <u>274.0ft.</u>	Commenced <u>JUNE 20/83</u>	Dip: Collar <u>-60°</u>
Property <u>RAYLVD RES. WIGLESC</u>	Bearing <u>Az. 0°</u>	Completed <u>JUNE 21/83</u>	Etch Test _____
Township <u>MCCABOIN TWP, ONT.</u>	Dip <u>-60°</u>	Drilling Co. <u>BRADLEY RES. LTD.</u>	Depth _____
Location <u>SOUTH GRID. LINE 16W, 19+20' South.</u>	Objective <u>To test a strong VLF-EM anomaly.</u>	Core Size <u>AQ</u>	Rdg. _____
		Casing Left in Hole <u>No</u>	True _____



Remarks _____

Footage		DESCRIPTION	Sample No.	From	To	Length	Au ppm.	Ag ppm.	Cu ppm.	Zn ppm.	Pb ppm.
From	To										
0.0'	82.5'	CASING									
82.5'	146.5'	Graphitic schist, Argillite. Banding at 10° to parallel to core axis. A few narrow tuffaceous seams. Minor pyrite on shear planes	8729	105.0'	109.0'	4.0'	45	3.2			
146.5'	166.5'	Gray tuff. Schistosity at 10° to parallel to core axis. Numerous veins at 151.5'-152.0', 153.0'-153.3', 161.5'-166.5', parallel to c.a.									
166.5'	181.5'	Argillite. Some graphitic and some tuffaceous sections, and pyrite-rich bands. Banding subparallel to c.a.									
181.5'	219.0'	Dioritic rock, sheared. Possible fault contact. Rock is schistose at about 10° to c.a. Variable pyrite (low) on schist planes. 3 inch quartz vein at 192.0' and 193.5'. Note - pyrite to 15% from 205.0'-222.0'. Rock becomes increasingly schistose and carbonated with depth.	8728	194.0'	195.5'	1.5'	8				
219.0'	242.0'	Diorite(?), highly schistose. Some Fe-carbonate veinlets and argillitic sections. Banding steepens to 30° to c.a. by 225.0'. Disseminated pyrite, trace spyl	8730	238.0'	239.5'	1.5'	56				
242.0'	271.2'	Graphite schist, argillitic sections. Banding approx parallel to core axis. Pyrite in bands, disseminations, nodules up to 25% in contact area. From 265.0' to 271.0' core is broken and there is core loss (4.0 ft). At 271.0 there is some waxy quartz.	8731	242.0'	243.0'	1.0'	34	0.4			
271.2'	274.0'	Tuffaceous argillite, banding at 20° to c.a. Some disseminated pyrite. End of hole.	8732	243.0'	247.0'	4.0'	42	0.5	175	500	104





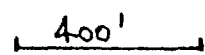
Claim Pa 437125



Raylloyd Resources Ltd.
WIGGLE CREEK PROPERTY, McCUBBIN
TOWNSHIP, ONTARIO
Location Sketch, Drill Hole

L7-2

Scale: 1" = 400 ft.



GMH, July, 1983.

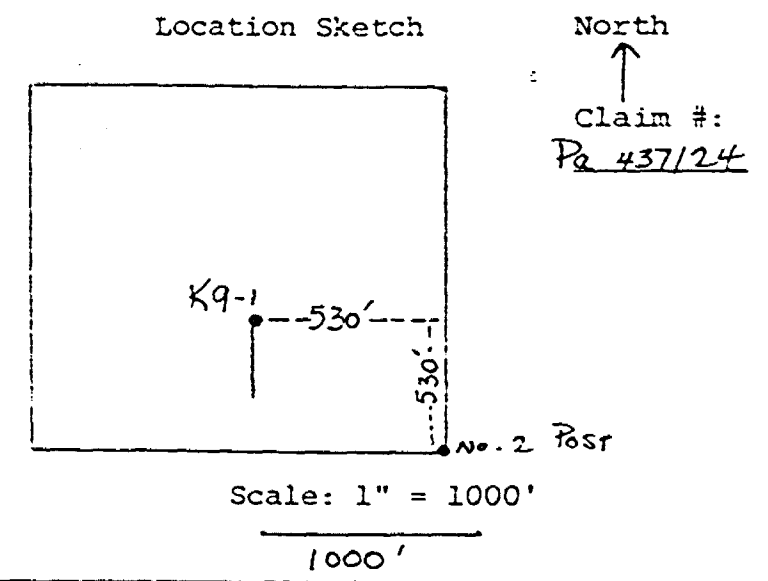
G.M. HOGG & ASSOCIATES LTD.

DIAMOND DRILL RECORD

HOLE NO. K9-1 Pg 1 of 2

Hole No. <u>K9-1 Sheet 1</u>	Length <u>400 ft</u>	Commenced <u>May 31/83</u>	Dip: Collar <u>-45°</u>
Property <u>Raylloyd Res Wiggles</u>	Bearing <u>Az 180°</u>	Completed <u>June 3/83</u>	Etch Test Depth Rdg. <u>True</u>
Township <u>Cres</u>	Dip <u>-45°</u>	Drilling Co. <u>Bradley Bros Ltd</u>	
Location <u>McCubbin Twp</u>	Objective <u>To</u>	Core Size <u>AQ</u>	
<u>South Grid, Line</u>	<u>section a</u>	Casing Left in Hole <u>No</u>	
<u>20E</u>	<u>magnetic & VLF-EM</u>		
<u>7+50' South</u>	<u>anomaly</u>		

**DUPLICATE COPY
POOR QUALITY ORIGINAL
TO FOLLOW**



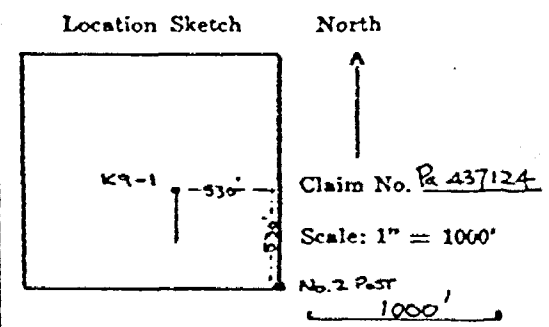
Remarks _____

Footage		DESCRIPTION	Sample No.	From	To	Length	Au ppb	AS ppm		
From	To									
0.0'	25.0'	Casing								
25.0'	53.0'	Argillite. Fine banding at 45° ca. Rock is blocky, broken.								
53.0'	79.0'	Graywacke, tuffaceous. Banding at 45° to 50° to c.a. Rock continues very blocky & broken. Rusty seams.								
79.0	94.0	Diorite. Medium grained gray-blue rock. Minor quartz veining 79.0'-81.0'								
94.0	103.0	Graywacke, tuffaceous. Banding at approx. 30° to c.a. 97.0'-98.0'-dioritic dike material								
		Rock continues blocky with rusty fractures and seams.								
103.0	139.0	Cherty facies of graywacke, continuing blocky with diorite material from 121.5'-123.5'. Banding at 30° to c.a. Note 0.5 chloritic zone with quartz & pyrite at 137.5'								
139.0	145.5	Dioritic dike material as above.								
145.5	160.0	Sandstone with some inter-related dioritic material. Banding at 30° to c.a. Note rusty zone with qtz 159.5-160.0								
160.0	190.2	Argillite, tuff. sections. Banding at 30° to c.a. Minor dioritic material & qtz veinlets 8722 177.0' 178.3' 1.3' 14	8722	177.0'	178.3'	1.3'	14			
190.2	250.0	Dioritic rock, med. grained, gray. Appears sheared at contact with minor pyrite mineralization. Banding at 45° to c.a. At approx. 250' rock becomes more schistose with banding steepening to about 60° to c.a. Note some blue qtz. eyes close to lower contact with low pyrite and possibly a trace of arsenopyrite.	8721	193.0	193.3	0.3	<5			
250.0	253.0	Graphite schist. Banding at 45° to c.a.	8719	250.0	251.0	1.0	<5			
253.0	269.0	Chloritic rock with qtz veinlets & some weak magnetic attractions. May be a schistose iron formation unit. Low sulphide mineralization at 254.0'-256.0' with pyrite, arsenopyrite. Banding at approx. 45° to c.a.	8720	255.0	256.2	1.2	200			
			8752	256.2	260.0	3.8	7	4		
			8753	260.0	262.5	2.5	<5	9		
269.0	294.0	Argillite. Fine banding at 45° to c.a.	8754	262.5	264.2	1.7	27	6		
294.0	350.0	Graywacke, tuff. & schistose. Banding at 45° to c.a. as above 336.8-337.6 Dioritic dike material.	8725	268.0	268.5	0.5	<5			

DIAMOND DRILL RECORD

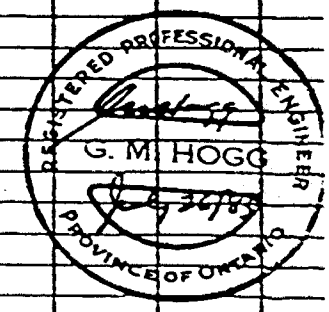
Hole No. K9-1 Pg 1 of 2

Hole No. <u>K-9-1</u> Sheet <u>1</u>	Length <u>400.0ft.</u>	Commenced <u>MAY 31 / 83</u>	Dip: Collar <u>-45°</u>
Property <u>RAILROAD RES. WORK CO.</u>	Bearing <u>Az. 180°</u>	Completed <u>JUNE 3 / 83</u>	Etch Test
Township <u>MCCUBAIN TWP., ONT.</u>	Dip <u>-45°</u>	Drilling Co. <u>BRADLEY DRILLING LTD.</u>	Depth
Location <u>SOUTH GRID, LINE 20E, 7450' SOUTH.</u>	Objective <u>To section a magnetic and VLF-EM anomaly.</u>	Core Size <u>AQ.</u>	Rdg.
		Casing Left in Hole <u>No.</u>	True



Remarks _____

Footage		DESCRIPTION	Sample No.	From	To	Length	Au ppb.	As ppm.				
From	To											
0.0'	25.0'	Casing										
25.0'	53.0'	Argillite. Fine banding at 45° to c.a. Rock is blocky, broken.										
53.0'	79.0'	Graywacke, tuffaceous. Banding at 45° to 50° to c.a. Rock contains very blocky and broken rusty seams.										
79.0'	94.0'	Diorite. Medium grained gray-blue rock. Minor quartz veining 79.0'-81.0'.										
94.0'	103.0'	Graywacke, tuffaceous. Banding at approx. 30° to c.a. 97.0'-98.0' dioritic dike material. Rock contains blocky with rusty fractures and seams.										
103.0'	139.0'	Cherty pieces of graywacke, containing blocky with dioritic material from 121.5'-123.5'. Banding at 30° to c.a. Note 0.5 chloritic zone with quartz and pyrite at 134.5'.										
139.0'	145.5'	Dioritic dike material, as above.										
145.5'	160.0'	Sandstone with some intercalated dioritic material. Banding at 30° to c.a. Note rusty zone with qtz 157.5'-160.0'.										
160.0'	190.2'	Argillite, tuffaceous sections. Banding at 30° to c.a. Minor dioritic material and quartz veinlets.	8722	177.0'	178.3'	1.3'		14				
190.2'	250.0'	Dioritic rock, med. grained, gray. Appears altered at contact with minor pyrite mineralization. Banding at 45° to c.a. At approx. 245.0' rock becomes more schistose with banding steepening to about 60° to c.a. Note some blue qtz eyes close to lower contact with blue pyrite and possibly a trace of arsenopyrite.	8721	193.0'	193.3'	0.3'		<5				
250.0'	253.0'	Graphitic schist. Banding at 45° to c.a.	8719	250.0'	251.0'	1.0'		<5				
253.0'	269.0'	Chloritic rock with quartz veinlets and some weak magnetic attraction. May be a schistose iron formation unit. Low sulphide mineralization at 254.0'-256.0' with pyrite, arsenopyrite. Banding at approx. 45° to c.a.	8720	255.0'	256.2'	1.2'		200				
			8752	256.2'	260.0'	3.8'		7	4			
			8753	260.0'	262.5'	2.5'		<5	9			
			8754	262.5'	264.2'	1.7'		27	6			
269.0'	294.0'	Argillite. Fine banding at 45° to c.a.	8725	268.0'	268.5'	0.5'		<5				
294.0'	350.0'	Graywacke, tuffaceous and schistose. Banding at 45° to c.a. as above. 336.8'-337.6' Dioritic dike material.										



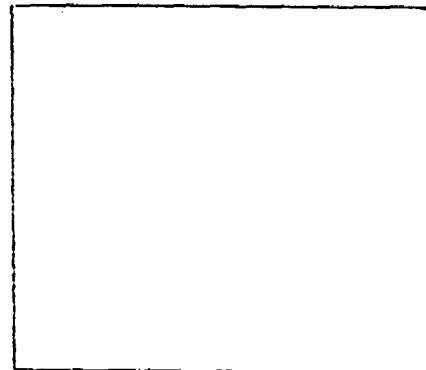
G.M. HOGG & ASSOCIATES LTD.

DIAMOND DRILL RECORD

HOLE NO. K9-1 Pg. 2
of 2

Hole No. <u>K9-1</u> Sheet <u>2</u>	Length _____	Commenced _____	Dip: Collar _____
Property _____	Bearing _____	Completed _____	Etch Test Depth Rdg. True
Township _____	Dip _____	Drilling Co. _____	
Location _____	Objective _____	Core Size _____	
		Casing Left in Hole _____	

Location Sketch



North
↑
Claim #: _____

Scale: 1" = 1000'
—————
1000'

**DUPLICATE COPY
POOR QUALITY ORIGINAL
TO FOLLOW**

Remarks _____

Footage		DESCRIPTION	Sample No.	From	To	Length			
From	To								
350.0	400.0	Diorite. Massive, gray, medium grained material. A few siliceous bands and quartz veinlets are present.							
400'		END OF HOLE							

DIAMOND DRILL RECORD

Hole No. K9-1 1924
21

Hole No. <u>K9-1</u> Sheet <u>2</u>	Length _____	Commenced _____	Dip: Collar _____
Property _____	Bearing _____	Completed _____	Etch Test _____
Township _____	Dip _____	Drilling Co. _____	Depth _____
Location _____	Objective _____	Core Size _____	Rdg. _____
		Casing Left in Hole _____	True _____

Location Sketch

North ↑

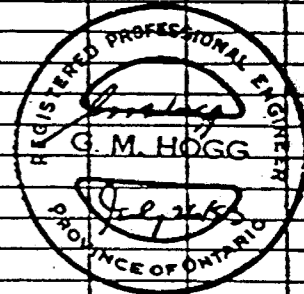
Claim No. _____

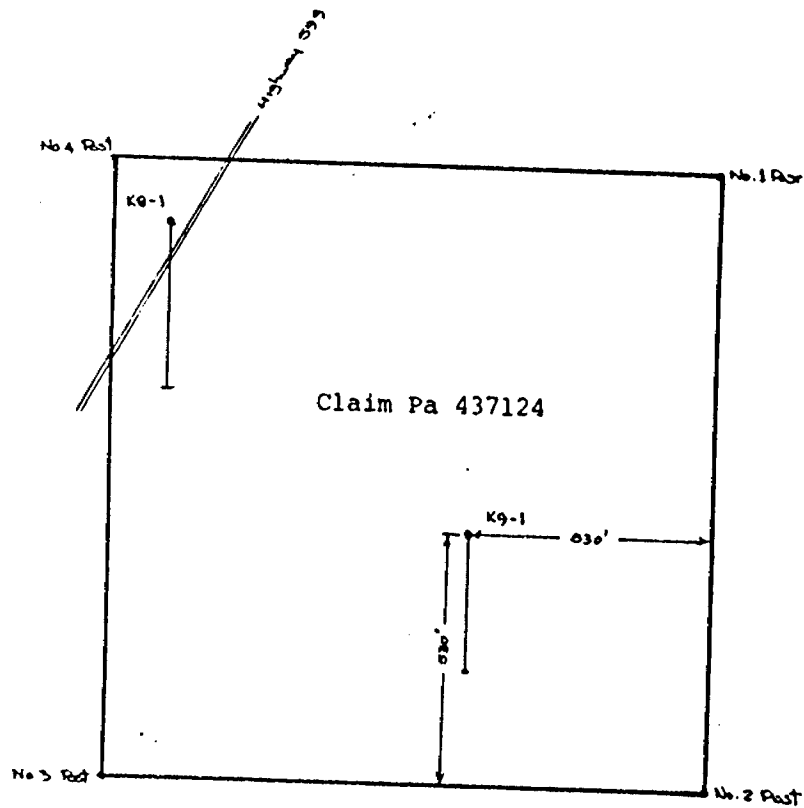
Scale: 1" = 1000'

1000'

Remarks _____

Footage		DESCRIPTION	Sample No.	From	To	Length						
From	To											
350.0'	400.0'	<i>Diorite. Massive, gray, medium grained material. A few siliceous bands and quartz diorite are present.</i>										
400.6'		<i>End of hole</i>										





N



GMH, July, 1983.

Raylloyd Resources Ltd.
WIGGLE CREEK PROPERTY, McCUBBIN
TOWNSHIP, ONTARIO
Location Sketch, Drill Hole
K9-1
Scale: 1" = 400 ft.

400'

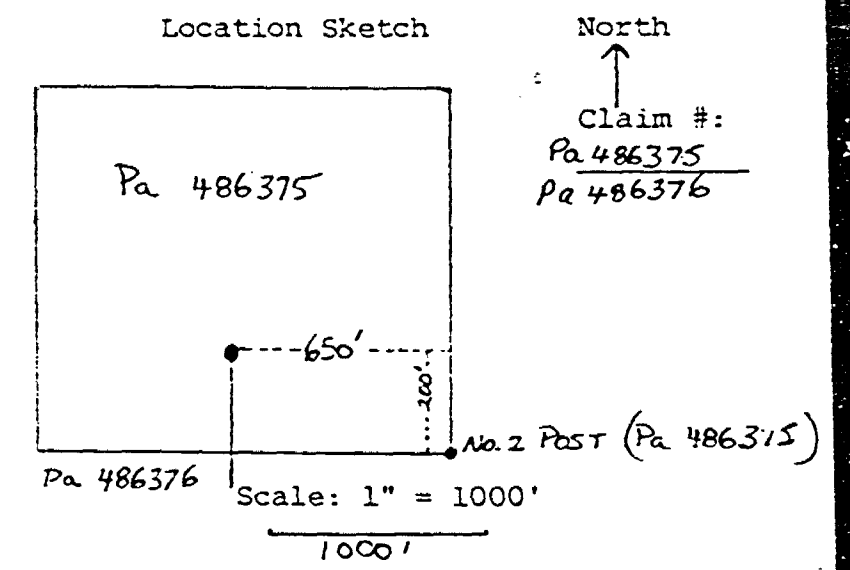
G. M. HOGG & ASSOCIATES LTD.

G.M. HOGG & ASSOCIATES LTD.

DIAMOND DRILL RECORD

HOLE NO. K7-1 Page 1
of 1

Hole No. <u>K7-1</u> Sheet <u>1</u>	Length <u>400.0'</u>	Commenced <u>June 3/83</u>	Dip: Collar <u>-45°</u>
Property <u>Raylloyd Res. Wiggle</u> <u>Cres.</u>	Bearing <u>Az 180°</u>	Completed <u>June 4/83</u>	Etch Test Depth Rdg. <u>True</u>
Township <u>McCubbin Two, Ont.</u>	Dip <u>-45°</u>	Drilling Co. <u>Bradley Bros Ltd</u>	
Location <u>South Grid,</u> <u>Line 36E</u>	Objective <u>To</u> <u>section a magnetic</u>	Core Size <u>AO</u>	
<u>2+00' North</u>	<u>& VLF-EM anomaly</u>	Casing Left in Hole <u>No</u>	



**DUPLICATE COPY
FOR QUALITY ORIGINAL
TO FOLLOW**

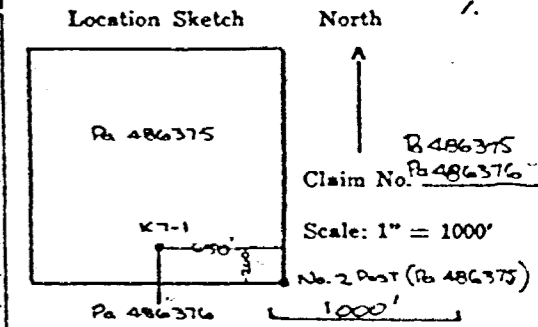
Remarks _____

Footage		DESCRIPTION	Sample No.	From	To	Length	Au ppb	AS ppm		
From	To									
0.0	30.0	Casing								
30.0	66.0	Dioritic rock, or coarse flow. Grav, med. grained ? 33.0'-33.8' Qtz. veining, minor pyrite 33.8'-37.0' Ar-illitic band After 37.0' banding is at approx 60° to c.a. A few minor argillitic zones are noted with minor Qtz. veining								
66.0	255.2	Graywacke, tuffaceous. Grav green schistose rock. Banding at 60° to c.a. at 70.0', steepening to about 70° to c.a. at 100.0 ft; 91.0'-92.0' Breccia zone Rock appears to become more chloritic at about 230.0 ft.								
255.2	352.5	Chloritic tuff and magnetic iron formation bands. Some pyrite and possible Aspyrite present 255.2-260.8. Qtz vein 260.5-261.0 279.8'-283.0' diorite dike (?) Oxide iron formation well developed. Sanding at about 45°-50° to core axis throughout. At 300.0' arenaceous beds become more prominent, but chloritic and iron formation beds persist. Minor sulphide mineralization and carbonate often present in I.F. beds.	8750	255.2'	256.7'	1.5'	34	1000		
352.5	387.5	Tuffaceous graywacke, banding at 45° to c.a. Traces of pyrite & minor quartz veining present 370.6'-372.0' quartz vein. By 370.0' rock becomes more massive, with banding at 60° to c.a. Diorite dikelets present								
387.5'	400.0'	Diorite, med. grained								
400.0'		END OF HOLE								

DIAMOND DRILL RECORD

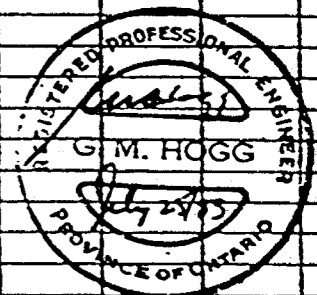
Hole No. K7-1 1
of

Hole No. <u>K7-1</u> Sheet <u>1</u>	Length <u>400.0ft.</u>	Commenced <u>JUNE 3/83</u>	Dip: Collar <u>-45°</u>
Property <u>LOCKWOOD RES. WIGGLE CR.</u>	Bearing <u>Az. 180°</u>	Completed <u>JUNE 4/83</u>	Etch Test
Township <u>MCCUBBIN TWP., ONT.</u>	Dip <u>-45°</u>	Drilling Co. <u>BERKLEY GEOS. LTD</u>	Depth
Location <u>SOUTH GRID, LINE 36E,</u> <u>2100' NORTH.</u>	Objective <u>To fraction a magnetic</u> <u>and VLF-EM anomaly</u>	Core Size <u>AR.</u>	Rdg.
		Casing Left in Hole <u>No.</u>	True

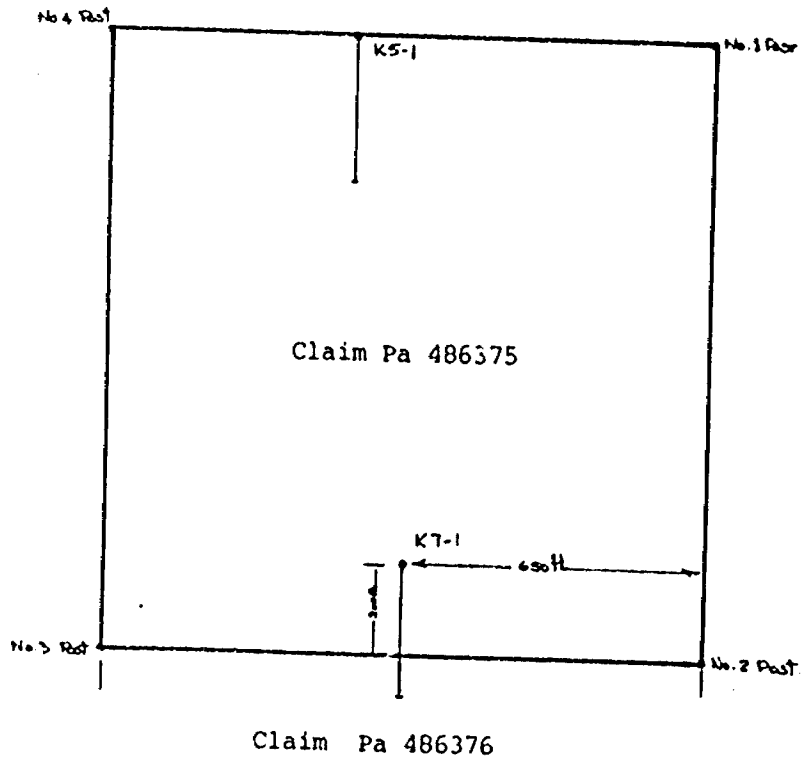


Remarks _____

Footage		DESCRIPTION	Sample No.	From	To	Length	Au ppb.	As ppm.				
From	To											
0.0'	30.0'	Casing										
30.0'	66.0'	Dioritic rock, or coarse flow gray, med. grained unit 33.0'-33.8' fls veining, minor pyrite 33.8'-37.0' Argillitic band After 37.0' banding is at approx 60° to c.a. A few minor argillitic zones are noted with minor fls veining										
66.0'	255.2'	Graywacke, tuffaceous gray green schistose rock. Banding at 60° to c.a. at 70.0', steepening to about 70° to c.a. at 100.0 ft 91.0'-92.0' breccia zone Rock appears to become more chloritic at about 230.0 ft										
255.2'	352.5'	Chloritic tuff and magnetic iron formation breccia. Some pyrite and possible magnetite present 255.2-260.8. Quartz vein 260.5-261.0 274.8-283.0' diorite dikes(?) - Oxide iron formation well developed, banding at about 45°-50° to core axis throughout. At 300.0' argillaceous beds become more prominent, but chloritic and iron formation beds persist. Minor sulphide mineralization and carbonate often present in T.F. beds.	0750	255.2	256.7	1.5'	34	1000				
352.5'	387.5'	Tuffaceous graywacke, banding at 45° to c.a. Traces of pyrite and minor quartz veining present 370.6-372.0' quartz vein By 370.0' rock becomes more massive, with banding at 60° to c.a. Diorite dikes present.										
387.5'	400.0'	Diorite, med. grained. End of hole.										



N



GMH, July, 1983.

Raylloyd Resources Ltd.
WIGGLE CREEK PROPERTY, McCUBBIN
TOWNSHIP, ONTARIO
Location Sketch, Drill Hole

K7-1

Scale: 1" = 400 ft.

400'

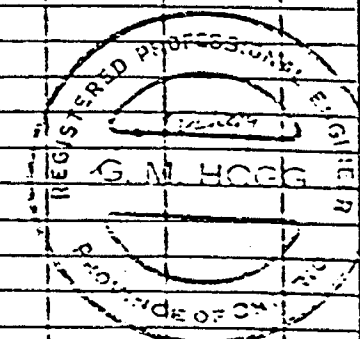
DIAMOND DRILL RECORD

Hole No. W-1

Hole No. <u>W-1</u> Sheet <u>1</u>	Length <u>400.0 ft</u>	Commenced <u>July 27, 1983</u>	Dip: Collar <u>-45°</u>	Location Sketch North Claim No. <u>R 437120</u> Scale: 1" = 1000'
Property <u>Raymond R. Wiggles</u>	Bearing <u>Az 180°</u>	Completed <u>July 28, 1983</u>	Etch Test Depth Rdg. True	
Township <u>McCUBBIN TWP. ONT.</u>	Dip <u>-45°</u>	Drilling Co. <u>Beadley Bros.</u>		
Location <u>NORTH GRID</u>	Objective <u>Test WIGGLE CREEK</u>	Core Size <u>50</u>		
<u>1+00W; 10+50N</u>	<u>PROSPECT</u>	Casing Left in Hole <u>No.</u>		
Remarks _____				

Footage		DESCRIPTION	Sample No.	From	To	Length	oz. Au/ton	oz. Ag/ton				
From	To											
0.0	2.0'	CASING										
2.0	71.0'	MAFIC VOLCANIC. DARK GREEN, FINE GRAINED. SOME CHLORITIC TUFF, MINOR QTZ-CARB. VEINING, AND SOME SCHISTOSE QTZ-CARB. ZONES WITH LOW PYRITE (Cg. 26.2-37.0). SCHISTOSITY & BANDING AT 45° TO CORE AXIS (CA).										
71.0	80.9'	CHEST GRAY, WITH MINOR CHLORITIC BANDS AND LOW CARBONATIZATION. SCHISTOSITY AT 45° D CA.										
80.9	190.0'	CHLORITIC TUFF, IRON FORMATION BANDS. OR ASIONAL FOLDING, CRENNATIONS, BUT DOMINANT SCHISTOSITY AT 45° TO CA. FREQUENT QTZ-CARB. VEINING (1"-2") WITH MINOR PYRITE 108.0-111.0 SPRECIATED IRON FORMATION ZONE AT 172.0 ROCK BECOMES WELL CARBONATED IN FLECKS AND BANDS WITH INCREASE IN VEINLET DEVELOPMENT AT 178.0 BANDING & SCHISTOSITY AT 60° TO CA. BUT VARIABLE										
190.0	211.1'	QUARTZ CHLORITE ZONE, STRONGLY VEINED AND WELL-CARBONATED. PYRITE (Py) 2-10% WITH SOME ARSENOPYRITE (AsPy). 209.5-210.5 STRONG QTZ-CARBONATE AND ASPY TO 5%	8777	190.0	192.5	0.5'	Tr.	0.02				
			8778	192.5	195.6	3.1'	Tr.	0.02				
			8779	195.6	197.1	1.5'	0.001	0.03				
211.1	250.0'	CHLORITIC TUFF WITH VERY MINOR IRON FORMATION DEVELOPMENT. WELL CARBONATED WITH MINOR QTZ-CARB. VEINING, AND BANDING AT 45° TO CA. 217.8-219.8 QTZ-CARB. VEINING WITH STRONG CARBONATE AND MINOR Py.	8780	197.1	197.5	0.4'	Tr.	0.02				
			8756	197.5	198.0	0.5'	0.002	-				
			8757	198.0	198.4	0.4'	0.035	-				
250.0	260.5'	BANDED CHERY MAGNETITE-IRON FORMATION BANDING VARIABLE AT 30° TO 45° TO CA. SOME CARBONATE	8758	198.4	198.8	0.4'	0.009	0.02				
			8781	198.8	199.1	0.3'	Tr.	Tr.				
260.5	306.5'	CHLORITIC TUFF WITH MINOR IRON FORMATION BANDS VEINING VARIABLE, AND BANDING AT 45° TO CA. 260.5-263.0 CHLORITIC QTZ-CARBONATE ZONE. LOW Py AT 272.0' BANDING AT 60° TO CA. AT 295.0' BANDING AT 45° TO CA.	8759	199.1	200.1	1.0'	0.096					
			8765	200.1	202.0	0.9'	0.010	-				
			8766	202.0	207.0	5.0'	Tr.	0.02				
			8767	207.0	209.0	2.0'	Tr.	-				
			8760	209.0	209.4	0.4'	0.16	-				
306.5	318.0'	CHEST GRAY. LOW CARBONATE. SCHISTOSITY AT 50° TO CA.	8761	209.4	210.3	1.4'	0.50	-				
318.0	330.5'	CHLORITIC TUFF. MINOR PYRITE ASSOC. WITH QTZ VEINETS 2" QTZ VEIN WITH PYRITE AT 327.0'	8782	210.3	211.1	0.3'	0.070	0.02				
			8783	211.1	213.7	2.6'	Tr.	0.01				

**DUPLICATE COPY
POOR QUALITY ORIGINAL
TO FOLLOW**

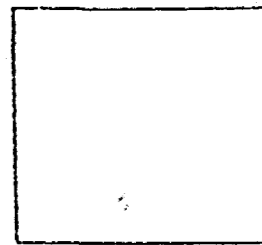


DIAMOND DRILL RECORD

Hole No. W-1

Hole No. <u>W-1</u> Sheet <u>1</u>	Length <u>400.0 ft</u>	Commenced <u>July 27, 1983</u>	Dip: Collar <u>-45°</u>
Property <u>RAYMOND RES. WIGGLE CR.</u>	Bearing <u>Az. 180°</u>	Completed <u>July 28, 1983</u>	Etch Test
Township <u>McCUBBIN TWP., ONT.</u>	Dip <u>-45°</u>	Drilling Co. <u>BRADLEY BROS.</u>	Depth
Location <u>NORTH GRID</u>	Objective <u>Test WIGGLE CREEK</u>	Core Size <u>BQ.</u>	Rdg.
<u>1+00W; 10+50N</u>	<u>PROSPECT</u>	Casing Left in Hole <u>No.</u>	True

Location Sketch



North ↑

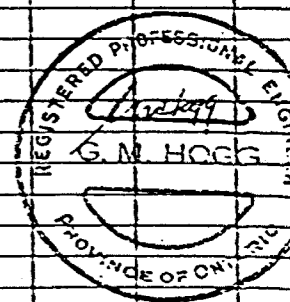
Claim No. R 437120

Scale: 1" = 1000'

1000'

Remarks _____

Footage		DESCRIPTION	Sample No.	From	To	Length	% Au/tm	% Ag/ton				
From	To											
0.0	2.0'	CASING										
2.0	71.0'	MAFIC VOLCANIC. DARK GREEN FINE GRAINED SOME CHLORITIC TUFF, MINOR QTZ-CARB. VEINING, AND SOME SCHISTOSE QTZ-CARB. ZONES WITH LOW PYRITE (eg. 26.2-27.0). SCHISTOSITY & BANDING AT 45° TO CORE AXIS (CA).										
71.0	80.9'	CHERT GRAY WITH MINOR CHLORITIC BANDS AND LOW CARBONATIZATION. SCHISTOSITY AT 45° TO CA.										
80.9	190.0'	CHLORITIC TUFF, IRON FORMATION BANDS. OCCASIONAL FOLDING, CRENNULATIONS, & DOMINANT SCHISTOSITY AT 45° TO CA. FREQUENT QTZ-CARB. VEINING (1"-2") WITH MINOR PYRITE										
		108.0-111.0 BRECCIATED IRON FORMATION ZONE										
		AT 172.0 ROCK BECOMES WELL CARBONATED IN FLECKS AND BANDS WITH INCREASE IN VEINLET DEVELOPMENT										
		AT 178.0 BANDING & SCHISTOSITY AT 60° TO CA, BUT VARIABLE										
190.0	211.1'	QUARTZ CHLORITE ZONE. STRONGLY VEINED AND WELL-CARBONATED PYRITE (Py) 2-10% WITH SOME ARSENOPYRITE (Aspy).	8777	190.0	192.5	0.5'	Tr.	0.02				
		209.5-210.5 STRONG QTZ-CARBONATE AND ASPY TO 5%.	8778	192.5	195.6	3.1'	Tr.	0.0				
			8779	195.6	197.1	1.5'	0.001	0.02				
211.1	250.0'	CHLORITIC TUFF WITH VERY MINOR IRON FORMATION DEVELOPMENT. WELL CARBONATED WITH MINOR QTZ-CARB. VEINING, AND BANDED AT 45° TO CA.	8780	197.1	197.5	0.4'	Tr.	0.02				
			8756	197.5	198.0	0.5'	0.002	-				
		217.8-219.8 QTZ-CARB. VEINING WITH STRONG CARBONATE AND MINOR Py.	8757	198.0	198.4	0.4'	0.035	-				
250.0	260.5'	BANDED CHERT MAGNETITE IRON FORMATION. BANDING VARIABLE AT 30° TO 45° TO CA.	8758	198.4	198.8	0.4'	0.009	0.02				
		SOME CARBONATE	8781	198.8	199.1	0.3'	Tr.	Tr.				
260.5	306.5'	CHLORITIC TUFF WITH MINOR IRON FORMATION BANDS. VEINING VARIABLE, AND BANDING AT 45° TO CA.	8759	199.1	200.1	1.0'	0.096	-				
			8765	200.1	202.0	0.9'	0.010	-				
		260.5-263.0 CHLORITIC QTZ-CARBONATE ZONE. LOW Py.	8766	202.0	207.0	5.0'	Tr.	0.02				
		AT 272.0' BANDING AT 60° TO CA.	8767	207.0	209.0	2.0'	Tr.	-				
		AT 295.0' BANDING AT 45° TO CA.	8760	209.0	209.4	0.4'	0.16	-				
306.5	318.0'	CHERT GRAY. LOW CARBONATE. SCHISTOSITY AT 50° TO CA.	8761	209.4	210.8	1.4'	0.50	-				
318.0	330.5'	CHLORITIC TUFF. MINOR PYRITE ASSOC. WITH QTZ. VEINLETS 2" QTZ VEIN WITH PYRITE AT 327.0'	8782	210.8	211.1	0.3'	0.070	0.02				
			8783	211.1	213.7	2.6'	Tr.	0.01				



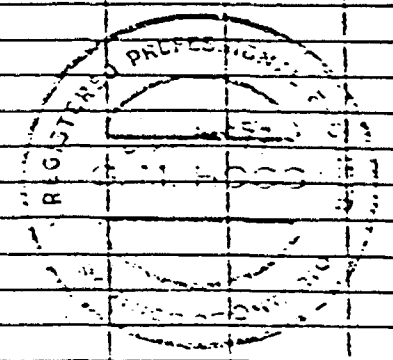
DIAMOND DRILL RECORD

Hole No. W-1

Hole No. <u>W-1</u> Sheet <u>2</u>	Length _____	Commenced _____	Dip: Collar _____	Location Sketch North ↑ Claim No. _____ Scale: 1" = 1000' 1000'
Property <u>PAULLOYD RES. WIGGLE CR.</u>	Bearing _____	Completed _____	Etch Test _____	
Township <u>MCCUBBIN TWP, ONT.</u>	Dip _____	Drilling Co. _____	Depth _____	
Location _____	Objective _____	Core Size _____	Rdg. _____	
Remarks _____		Casing Left in Hole _____	True _____	

Footage		DESCRIPTION	Sample No.	From	To	Length	oz.			
From	To						oz./tm.	oz./tm.		
330.5'	335.5'	CHERT, GRAY AS ABOVE SCHISTOSITY AT 60° TO CA. 332.0-332.5' QZ VEINING LOW PY TRACE A3P4.	8794	217.8	219.8	2.0'	Tr.	0.03		
335.5'	400.0'	CHLORITIC TUFF WITH IRON FORMATION BANDS. ROCK IS MODERATELY CARBONATED AND CONTAINS SOME QZ VEINING WITH PYLIM BANDS UP TO 2" IN WIDTH. SCHISTOSITY AND BANDING FROM 60° TO 70° TO CA. WITH SOME GRENULATIONS FROM 350.2' IRON FORMATION BANDS BECOME SPARSE. AT 372.0' 2" QZ VEIN WITH LOW PY, A3P4.	8796	260.5	263.0	2.5'	Tr.	Tr.		
			8797	332.0	332.5	0.5'	Tr.	Tr.		
			8798	371.8	372.3	0.5'	Tr.	0.01		
400.0		END OF HOLE								

DUPLICATE COPY
POOR QUALITY ORIGINAL
TO FOLLOW



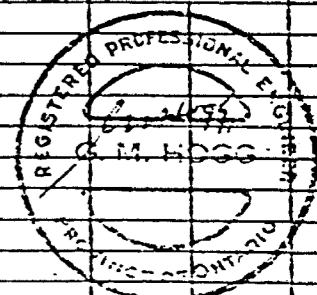
DIAMOND DRILL RECORD

Hole No. W-1

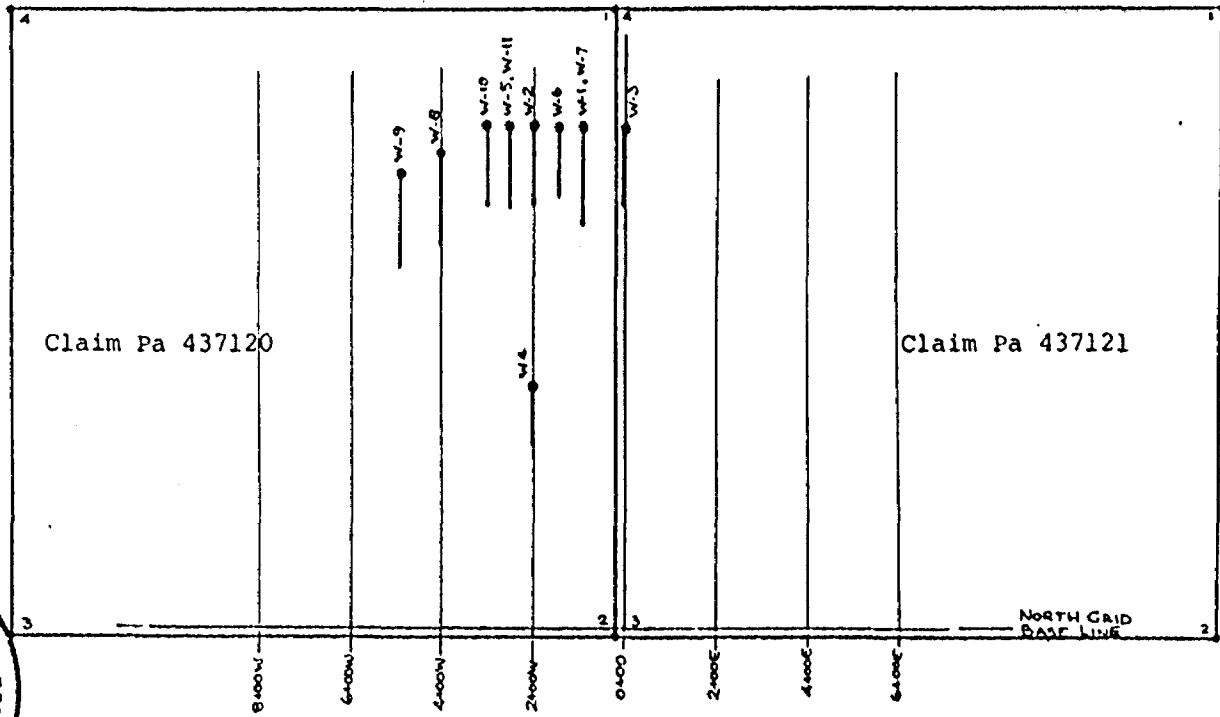
Hole No. <u>W-1</u> Sheet <u>2</u>	Length _____	Commenced _____	Dip: Collar _____			Location Sketch <div style="border: 1px solid black; width: 80px; height: 80px; margin: 0 auto;"></div> <p style="margin: 5px 0;">North ↑ Claim No. _____ Scale: 1" = 1000' 1000'</p>	
Property <u>RAYLOYD RES. WIGGLE CR.</u>	Bearing _____	Completed _____	Etch Test	Depth	Rdg.		True
Township <u>McCUBBINTWP., ONT.</u>	Dip _____	Drilling Co. _____					
Location _____	Objective _____	Core Size _____					
		Casing Left in Hole _____					

Remarks _____

Footage		DESCRIPTION	Sample No.	From	To	Length	oz.					
From	To						Au/tm	Ag/tm				
330.5'	335.5'	CHERT, GRAY AS ABOVE. SCHISTOSITY AT 60° TO CA.	8784	217.8	219.8	2.0'	Tr.	0.03				
		332.0-332.5' QZ VEINING, LOW PY, TRACE ASPY.										
335.5'	400.0'	CLORITIC TUFF WITH IRON FORMATION BANDS. ROCK IS MODERATELY CARBONATED AND CONTAINS SOME QZ VEINING WITH PYLUS BANDS UP TO 2" IN WIDTH. SCHISTOSITY AND BANDING FROM 45° TO 70° TO CA. WITH SOME CREVILLATION. FROM 350.0' IRON FORMATION BANDS BECOME SPARSE. AT 372.0' 2" QZ VEIN WITH LOW PY, ASPY.	8786	260.5	263.0	2.5'	Tr.	Tr.				
			8787	332.0	332.5	0.5'	Tr.	Tr.				
			8788	371.8	372.3	0.5'	Tr.	0.01				
400.0		END OF HOLE										



N



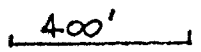
G. M. HOGG & ASSOCIATES LTD.



GMH Nov. 1983.

Raylloyd Resources Ltd.
DRILL HOLE LOCATION PLAN, NORTH GRID
AREA OF THE WIGGLE CREEK PROPERTY,
McCUBBIN TOWNSHIP, ONTARIO

Scale: 1 inch = 400 ft.



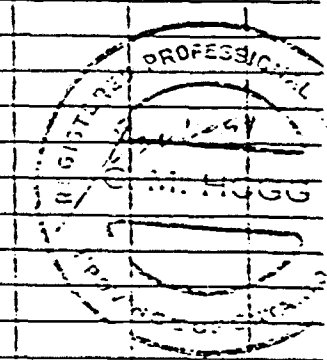
DIAMOND DRILL RECORD

Hole No. W-2

Hole No. <u>W-2</u> Sheet <u>1</u>	Length <u>400.0'</u>	Commenced <u>July 29, 1983</u>	Dip: Collar <u>-45°</u>	Location Sketch North ↑ Claim No. <u>Pa 437120</u> Scale: 1" = 1000' 1000'
Property <u>EMILYOND RES. WIGGLE CR.</u>	Bearing <u>Az. 180°</u>	Completed <u>July 29, 1983</u>	Etch Test Depth Rdg. True	
Township <u>McCUBBIN TWP., ONT.</u>	Dip <u>-45°</u>	Drilling Co. <u>BRADLEY DRILLING LTD.</u>		
Location <u>NORTH GRID</u>	Objective	Core Size <u>30</u>		
<u>2+00W; 10+50N</u>		Casing Left in Hole		
Remarks				

Footage		DESCRIPTION	Sample No.	From	To	Length	Au oz./ton	Ag oz./ton	As ppm.
From	To								
0.0'	2.0'	CASING							
2.0'	101.0'	MAFIC VOLCANIC DARK GREEN, FINE GRAINED WITH SOME CHLORITIC (TUFFACEOUS?) ZONED SANDING INDISTINCT AT 35°-40° TO GFA AXIS (CA). MINOR QUARTZ VEINING AT 75.0' ROCK BECOMES MORE TUFFACEOUS, AND SANDING STEEPEN TO 45°-50° TO CA. AT 97.0' SANDING IS PARALLEL TO CA FOR SHORT DISTANCE, RETURNING TO 30°-35° TO CA. BY 92.0'							
101.0'	108.0'	92.0-93.0' QUARTZ VEINLET PARALLEL TO G.A. MINOR PYRITE. CHEST ZONE. GRAY TO BROWN IN COLOR. SCHISTOSITY AT 40° TO CA. FOLDS FROM 105.0' MAY BE FOLDS/SPAG DEVELOPMENT.							
108.0'	200.0'	CHLORITIC TUFF AND IRON FORMATION. MAINLY CHLORITIC TUFF IN UPPER PART OF SECTION. BANDING AT 30° TO CA. BUT FRACTURE SYSTEM PRESENT PARALLEL TO CORE.							
		126.5-133.5' STRONGER IRON FORMATION DEVELOPMENT. SOME QUARTZ-CARBONATE VEINING WITH PYRITE. BY 185.0' CARBONATIZATION APPEARS IN STREAKS AND BANDS, INCREASING IN STRENGTH WITH DEPTH.	9762	126.4	128.6	2.2	0.008	-	-
			9763	129.6	129.5	0.9	0.001	-	-
			9764	129.5	131.8	2.3	0.011	-	-
		187.0-197.0' CREMULATED ZONE, MINOR FOLDING.							
200.0'	260.0'	QUARTZ CARBONATE ZONE. ROCK CHLORITIC WITH QUARTZ-CARBONATE VEINING AND CREMULATED OR BRCCIATED ZONES. INTERRUPTED IRON FORMATION AND PYRITIC BANDS THROUGHOUT.							
		213.0-217.5' BRCCIATED, VEINED AND MINERALIZED WITH PYRITE AND LOW AS24.	8769	213.5	217.0	3.5	Tr.	-	-
		228.0-230.5' BRCCIATED, VEINED AND MINERALIZED WITH PYRITE.	8771	217.0	217.7	0.7	0.016	-	72000
260.0'	400.0'	CHLORITIC TUFF AND IRON FORMATION. ROCK IS MODERATELY TO WEAKLY CARBONATIZED, AND BANNED AT 45° TO CA.	8770	228.2	229.4	1.2	0.001	-	-
			8772	229.4	230.2	0.9	0.001	-	-
		352.0-377.0' CHESTY SECTION, MINOR IRON FORMATION.							
400.0'		END OF HOLE							

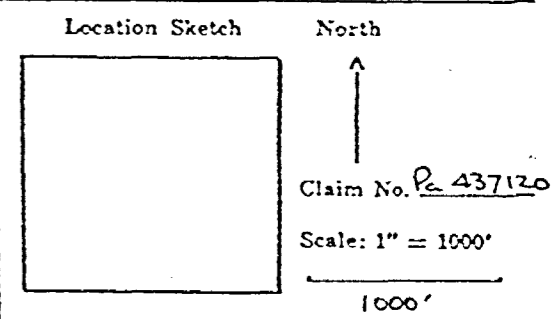
DUPLICATE COPY
POOR QUALITY ORIGINAL
TO FOLLOW



DIAMOND DRILL RECORD

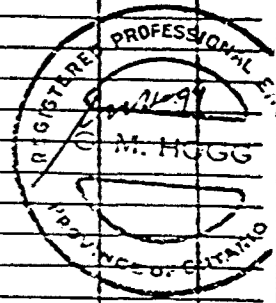
Hole No. W-2

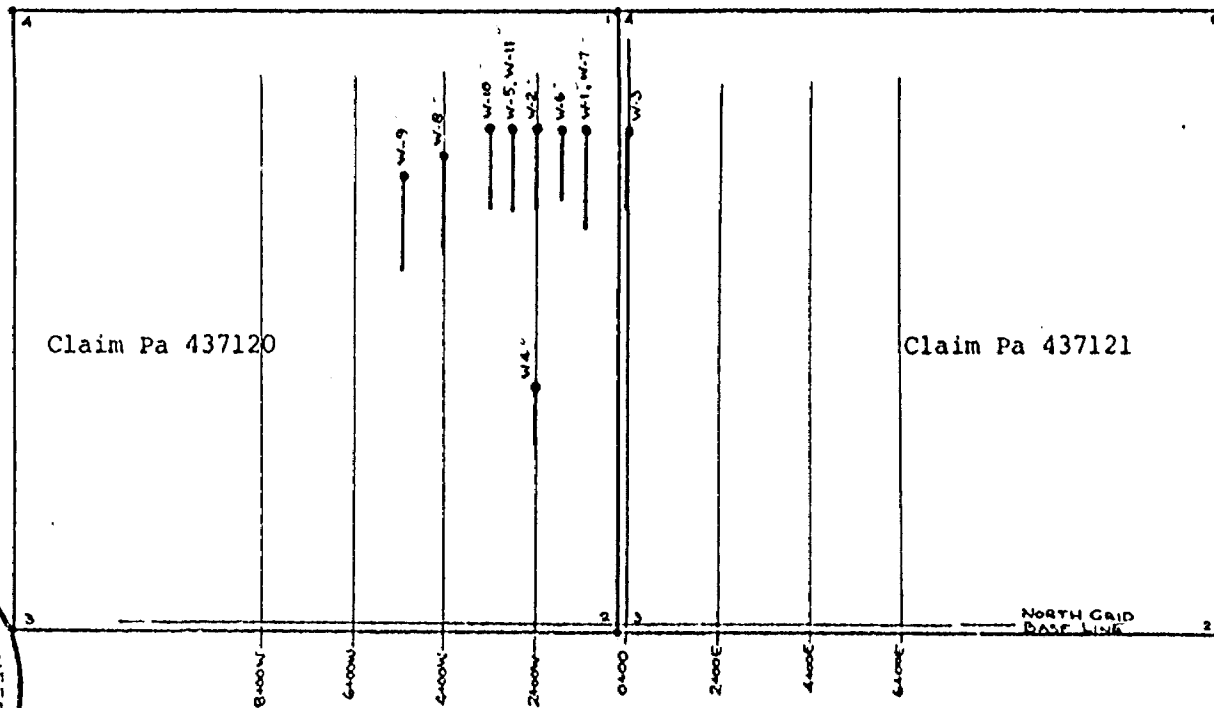
Hole No. <u>W-2</u> Sheet <u>1</u>	Length <u>400.0'</u>	Commenced <u>July 29, 1983</u>	Dip: Collar <u>-45°</u>
Property <u>EMMOND RES. WIGGLE CR.</u>	Bearing <u>Az. 180°</u>	Completed <u>July 29, 1983</u>	Etch Test _____
Township <u>MCCUBBIN TWP., ONT.</u>	Dip <u>-45°</u>	Drilling Co. <u>BRADLEY TRANS. LTD.</u>	Depth _____
Location <u>NORTH GRID</u>	Objective _____	Core Size <u>BQ</u>	Rdg. _____
<u>2+00W; 10+50N</u>		Casing Left in Hole _____	True _____



Remarks _____

Footage		DESCRIPTION	Sample No.	From	To	Length	Au oz./ton	Ag oz./ton	As ppm.
From	To								
0.0'	2.0'	CASING							
2.0'	101.0'	MAFIC VOLCANIC DARK GREEN, FINE GRAINED, WITH SOME CHLORITIC (ULTRAFERRUG?) ZONED BANDING INDISTINCT AT 35°-40° TO DIRT AXIS (CA). MINOR QUARTZ VEINING AT 75.0' ROCK BECOMES MORE ULTRAFERRUG, AND BANDING STEEPENS TO 45°-50° TO CA. AT 87.0' BANDING IS PARALLEL TO CA FOR SHORT DISTANCE, RETURNING TO 30°-35° TO CA. BY 92.0'							
101.0'	108.0'	92.0'-93.0' QUARTZ VEINLET PARALLEL TO CA, MINOR PYRITE. CHEST ZONE. GRAY TO BROWN IN COLOR. SCHISTOSITY AT 40° TO CA. FLOCKS FROM 105.0' MAY BE FELDSPAR DEVELOPMENT.							
108.0'	200.0'	CHLORITIC TUFF AND IRON FORMATION. MAINLY CHLORITIC TUFF IN UPPER PART OF SECTION. BANDING AT 30° TO CA. BUT FRACTURE SYSTEM PRESENT PARALLEL TO CORE. 126.5'-133.5' STRONGER IRON FORMATION DEVELOPMENT. SOME QUARTZ-CARBONATE VEINING WITH PYRITE BY 185.0' CARBONATIZATION APPEARS IN FLOCKS AND BANES, INCREASING IN STRENGTH WITH DEPTH. 187.0'-197.0' CRENULATED ZONE. MINOR FOLDING.	8762	126.4	128.6	2.2	0.008	-	-
			8763	129.6	129.5	0.9	0.001	-	-
			8764	129.5	131.8	2.3	0.011	-	-
200.0'	260.0'	QUARTZ CARBONATE ZONE. ROCK CHLORITIC WITH QUARTZ-CARBONATE VEINING AND CRENULATED OR BRECCIATED ZONES. INTERMIXED IRON FORMATIONS AND PYRITIC BANES THROUGHOUT. 213.0'-217.5' BRECCIATED, VEINED AND MINERALIZED WITH PYRITE AND LOW ASBY. 228.0'-230.5' BRECCIATED, VEINED AND MINERALIZED WITH PYRITE.	8769	213.5	217.0	3.5	Tr.	-	-
			8771	217.0	217.7	0.7	0.016	-	72000
260.0'	400.0'	CHLORITIC TUFF AND IRON FORMATION. ROCK IS MODERATELY TO WEAKLY CARBONATIZED, AND BANED AT 45° TO CA. 352.0'-377.0' CHESTY SECTION. MINOR IRON FORMATION.	8770	228.2	229.4	1.2	0.001	-	-
			8772	229.4	230.2	0.8	0.001	-	-
400.0'		END OF HOLE							

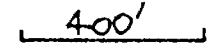




G. M. HOGG & ASSOCIATES LTD.

Raylloyd Resources Ltd.
 DRILL HOLE LOCATION PLAN, NORTH GRID
 AREA OF THE WIGGLE CREEK PROPERTY,
 McCUBBIN TOWNSHIP, ONTARIO

Scale: 1 inch = 400 ft.



GMH Nov. 1993.

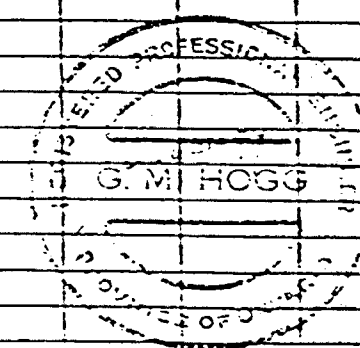
DIAMOND DRILL RECORD

Hole No. W-3

Hole No. <u>W-3</u> Sheet <u>1</u>	Length <u>320.0'</u>	Commenced <u>JULY 29, 1983</u>	Dip: Collar <u>-45°</u>	Location Sketch North Claim No. <u>Pa 43712</u> Scale: 1" = 1000' <u>1000'</u>
Property <u>RAYLOYD COS., WAGGLE CR.</u>	Bearing <u>Az. 180°</u>	Completed <u>JULY 30, 1983</u>	Etch Test Depth Rdg. True	
Township <u>MCCABIN TWP., ONT.</u>	Dip <u>-45°</u>	Drilling Co. <u>BRADLEY GEOS. LTD.</u>		
Location <u>NORTH GRID</u>	Objective _____	Core Size <u>30</u>		
<u>0+00 ; 10+50 N</u>		Casing Left in Hole _____		
Remarks _____				

Footage		DESCRIPTION	Sample No.	From	To	Length	Au oz./tm.	Ag oz./tm.	As ppm.
From	To								
0.0'	8.0'	CASING.							
8.0'	52.5'	MAFIC VOLCANICS GREEN FINE GRAINED ROCK WITH MINOR CHLORITIC (TUFF?) BANDS SCHISTOSITY AT 30° TO CORE AXIS (C.A.). AT 28.5' ROCK BECOMES MORE TUFFACEOUS, WITH SOME QUARTZ VEINLETS.							
52.5'	63.0'	CHERT BROWN TO GRAY IN COLOR SCHISTOSITY AT 40° TO CA.							
63.0'	170.5'	CHLORITIC TUFF AND IRON FORMATION. BANDED AT 40° TO CA. MINOR QUARTZ VEINLING THROUGHOUT CHLORITIC MATERIAL DOMINANT. 80.0'-92.0' CHERTY IRON FORMATION STRONGLY DEVELOPED. 101.0'-102.0' QUARTZ VEINLING WITH CHLORITE, PYRITE.	5811	101.0'	102.2'	1.2'	0.001	0.01	
		FROM 140.0' ROCK IS CARBONATED (CARBONATIZATION) BECOMES STRONGER WITH DEPTH.							
170.5'	195.5'	QUARTZ-CARBONATE ZONE. SOME CRYSTALLIZATION OF BANDING, MINOR IRON FORMATION REMANENTS. PRECIPITATED AND VEINED SECTIONS WITH DARK CHLORITE, QUARTZ, CARBONATE, PYRITE AND TRACE OF VERY OXYGEN PRESENT.	8774	172.0'	175.1'	3.1'	0.004	-	51
			8775	175.1'	176.4'	1.3'	0.002	-	
			8776	176.4'	178.1'	1.7'	Tr.	-	163
195.5'	290.0'	CHLORITIC TUFF AND IRON FORMATION. BANDED AT 40° TO C.A. MINOR QUARTZ CARBONATE VEINLING AND ASSOCIATED PYRITE PRESENT.	5812	178.1'	180.5'	2.4'	0.001	0.01	
			5813	180.5'	180.0'	0.5'	0.002	0.01	
290.0'	314.8'	CHERT GRAY TO BROWN IN COLOR SCHISTOSITY AT 45° TO C.A.							
314.8'	320.0'	CHLORITIC TUFF AND IRON FORMATION AS ABOVE.							
320.0'		END OF HOLE.							

**DUPLICATE COPY
POOR QUALITY ORIGINAL
TO FOLLOW**

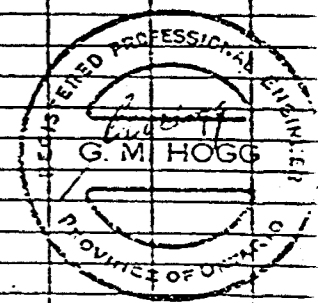


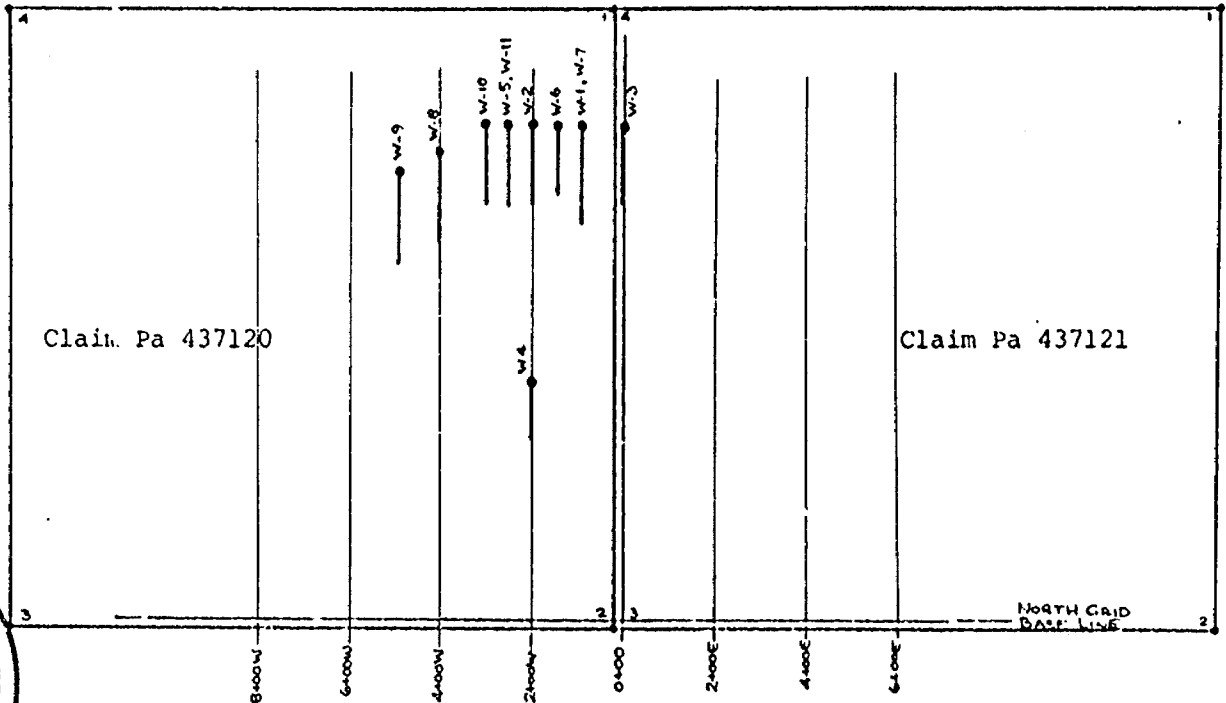
DIAMOND DRILL RECORD

Hole No. W-3

Hole No. <u>W-3</u> Sheet <u>1</u>	Length <u>320.0'</u>	Commenced <u>JULY 29, 1983</u>	Dip: Collar <u>-45°</u>	Location Sketch North <div style="text-align: center;"> ↑ Claim No. <u>Pa 43712</u> Scale: 1" = 1000' 1000' </div>
Property <u>RAYLLOYD RES.; MCCLE CR.</u>	Bearing <u>Az. 180°</u>	Completed <u>JULY 30, 1983</u>	Etch Test Depth Rdg. True	
Township <u>MCCUBBIN TWP., ONT.</u>	Dip <u>-45°</u>	Drilling Co. <u>BRADLEY GROS. LTD.</u>		
Location <u>NORTH GRID</u>	Objective _____	Core Size <u>30</u>		
<u>0+00; 10+50N</u>		Casing Left in Hole _____		
Remarks _____				

Footage		DESCRIPTION	Sample No.	From	To	Length	Au oz./tm.	Ag oz./tm.	As ppm.		
From	To										
0.0'	8.0'	CASING.									
8.0'	52.5'	MAFIC VOLCANICS GREEN, FINE GRAINED ROCK WITH MINOR CHLORITIC (TUFF?) BANDS SCHISTOSITY AT 30° TO CORE AXIS (C.A.) AT 28.5' ROCK BECOMES MORE TUFFEAGOUS, WITH SOME QUARTZ VEINLETS.									
52.5'	63.0'	CHERT BROWN TO GRAY IN COLOR. SCHISTOSITY AT 40° TO C.A.									
63.0'	170.5'	CHLORITIC TUFF AND IRON FORMATION. BANDED AT 40° TO C.A. MINOR QUARTZ VEINING THROUGHOUT CHLORITIC MATERIAL DOMINANT. 80.0'-98.0' CHERTY IRON FORMATION. STRONGLY DEVELOPED. 101.0'-102.0' QUARTZ VEINING WITH CHLORITE, PYRITE. FROM 102.0' ROCK IS CARBONATED. CARBONATIZATION BECOMES STRONGER WITH DEPTH.	5811	101.0'	102.2'	1.2'	0.001	0.01			
170.5'	195.5'	QUARTZ-CARBONATE ZONE. SOME CONTINUATION OF BANDING, MINOR IRON FORMATION REMANENTS. BRECCIATED AND VEINED SECTIONS WITH DARK CHLORITE, QUARTZ, CARBONATE, PYRITE AND TRACE OF ARSY OPHEN PRESENT.	8774	172.0'	175.1'	3.1'	0.004	-	51		
			8775	175.1'	176.4'	1.3'	0.002	-			
			8776	176.4'	178.1'	1.7'	Tr.	-	163		
195.5'	290.0'	CHLORITIC TUFF AND IRON FORMATION. BANDING AT 40° TO C.A. MINOR QUARTZ CARBONATE VEINING AND ASSOCIATED PYRITE PRESENT.	5812	178.1'	180.5'	2.4'	0.001	0.01			
			5813	180.5'	180.0'	0.5'	0.002	0.01			
290.0'	314.8'	CHERT GRAY TO BROWN IN COLOR. SCHISTOSITY AT 45° TO C.A.									
314.8'	320.0'	CHLORITIC TUFF AND IRON FORMATION AS ABOVE.									
320.0'		END OF HOLE.									





G. M. HOGG & ASSOCIATES, LTD.

Raylloyd Resources Ltd.
DRILL HOLE LOCATION PLAN, NORTH GRID
AREA OF THE WIGGLE CREEK PROPERTY,
McCUBBIN TOWNSHIP, ONTARIO

Scale: 1 inch = 400 ft.

100'

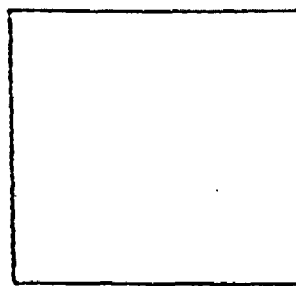
GMH Nov. 1983.

DIAMOND DRILL RECORD

Hole No. W-4

Hole No. <u>W-4</u> Sheet <u>1</u>	Length <u>325.0'</u>	Commenced <u>July 30, 1983</u>	Dip: Celiar <u>-45°</u>
Property <u>CANLOND RES. WIGGLE CR.</u>	Bearing <u>Az. 180°</u>	Completed <u>July 31, 1983</u>	Etch Test _____
Township <u>MCCUBBIN TWP. ONT.</u>	Dip <u>-45°</u>	Drilling Co. <u>BRADLEY BROS. LTD.</u>	Depth _____
Location <u>NORTH GRID</u>	Objective _____	Core Size <u>30</u>	Rdg. _____
<u>2+00 W 5+00 N</u>		Casing Left in Hole _____	True _____

Location Sketch



North ↑

Claim No. 243712

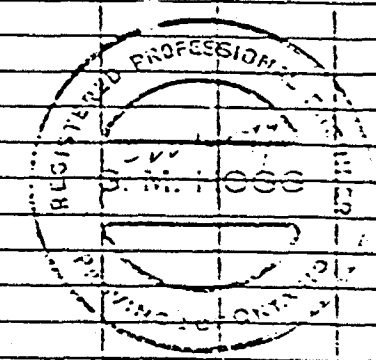
Scale: 1" = 1000'

1000'

Remarks _____

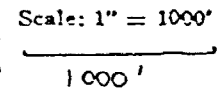
Footage		DESCRIPTION	Sample No.	From	To	Length
From	To					
0.0'	2.0'	CASING				
2.0'	28.0'	CHLORITIC BASALT. POORLY BANDED AT 35°-40° TO COREDIPS (C.A). MINOR QUARTZ VEINING PRESENT WITH TRACE OF PYRITE.				
28.0'	203.0'	CHLORITIC TUFF AND IRON FORMATION. BANDED AT 30°-50° TO C.A. ROCK IS MAINLY CHLORITIC TUFF IN UPPER PART OF SECTION. 54.0'-55.0' LINE QUARTZ VEIN. PYRITE 2-3%. 110.0'-110.5' WHITE QUARTZ VEIN. PYRITE 1 1/2-2%. AT ABOUT 125.0' BANDED NOTED AT 60° TO C.A. 132.0'-150.0' ROCK IS MAINLY IRON FORMATION. IT IS CARBONATED WITH MINOR CHLORITIC BANDS AND QUARTZ CARBONATE VEINLETS (SOME CRENULATION) OF BANDED. FROM 150.0' ROCK IS MAINLY CHLORITIC TUFF, BANDED AT 70° TO C.A. NARROW CHLORITIC SHEAR WITH PYRITE AND QUARTZ AT 172.3'. 174.0'-175.5' QUERT ZONE.				
203.0'	325.0'	GRAYWACKE. CHLORITIC AND CARBONATED. BANDED INDISTINCT AT ABOUT 30° TO C.A. MINOR QUARTZ VEINING PRESENT THROUGHOUT.				
325.0'		END OF HOLE				

DUPLICATE COPY
POOR QUALITY ORIGINAL
TO FOLLOW

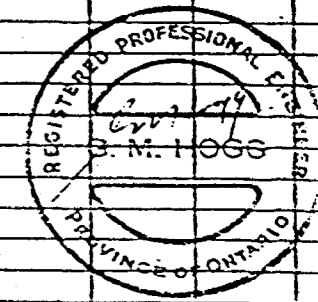


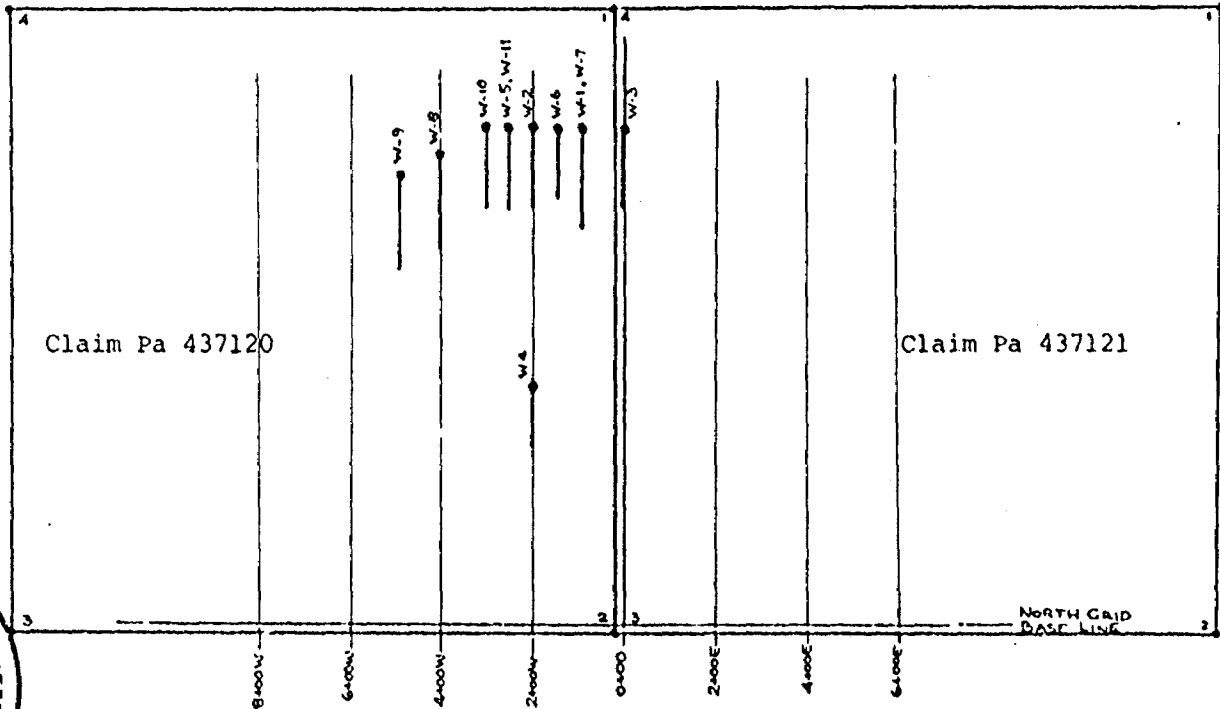
DIAMOND DRILL RECORD

Hole No. W-4

Hole No. <u>W-4</u> Sheet <u>1</u>	Length <u>325.0'</u>	Commenced <u>July 30, 1983</u>	Dip: Coliar <u>-45°</u>	Location Sketch North ↑ Claim No. <u>R 431</u> Scale: 1" = 1000' 
Property <u>PAWNEE RES. WIGGLE CR.</u>	Bearing <u>Az. 180°</u>	Completed <u>July 31, 1983</u>	Etch Test Depth Rdg. True	
Township <u>MCCUBBIN TWP., ONT.</u>	Dip <u>-45°</u>	Drilling Co. <u>GRADY BROS. LTD.</u>		
Location <u>NORTH GRID</u>	Objective _____	Core Size <u>BQ</u>		
<u>2+00 W 5+00 N</u>		Casing Left in Hole _____		
Remarks _____				

Footage		DESCRIPTION	Sample No.	From	To	Length													
From	To																		
0.0'	2.0'	CASING																	
2.0'	28.0'	CHLORITIC BASALT. POORLY BANDED AT 35°-40° TO SCREENS (C.A). MINOR QUARTZ VEINING PRESENT WITH TRACE OF PYRITE.																	
28.0'	203.0'	CHLORITIC TUFF AND IRON FORMATION. BANDING AT 30°-50° TO C.A. ROCK IS MAINLY CHLORITIC TUFF IN UPPER PART OF SECTION. 54.0'-55.0' PINK QUARTZ VEIN. PYRITE 2-3%. 110.0'-110.5' WHITE QUARTZ VEIN. PYRITE 1/2-2%. AT ABOUT 125.0' BANDING NOTED AT 60° TO C.A. 132.0'-150.0' ROCK IS MAINLY IRON FORMATION. IT IS CARBONATED WITH MINOR CHLORITIC BANDS AND QUARTZ CARBONATE VEINLETS SOME CRENULATION OF BANDS. FROM 150.0' ROCK IS MAINLY CHLORITIC TUFF, BANDED AT 70° TO C.A. NARROW CHLORITIC SHEAR WITH PYRITE AND QUARTZ AT 172.3'. 174.0'-175.5' CHEST ZONE.																	
203.0'	325.0'	GRAYWACKE. CHLORITIC AND CARBONATED. BANDING INDISTINCT AT ABOUT 80° TO C.A. MINOR QUARTZ VEINING PRESENT THROUGHOUT.																	
325.0'		END OF HOLE																	





G.M. HOGG & ASSOCIATES LTD.

Raylloyd Resources Ltd.
DRILL HOLE LOCATION PLAN, NORTH GRID
AREA OF THE WIGGLE CREEK PROPERTY,
McCUBBIN TOWNSHIP, ONTARIO

Scale: 1 inch = 400 ft.

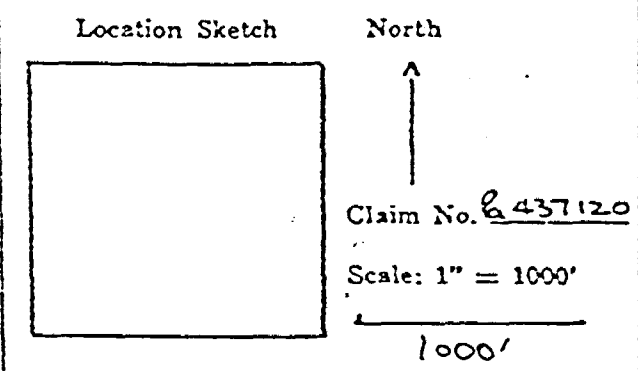
400'

GMH Nov. 1983.

DIAMOND DRILL RECORD

Hole No. W-5

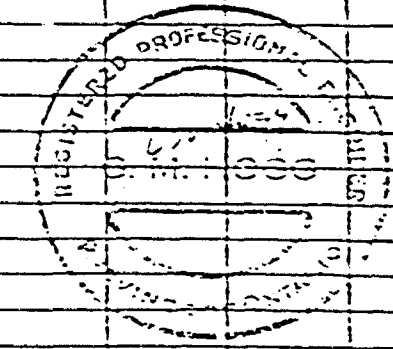
Hole No. <u>W-5</u> Sheet <u>1</u>	Length <u>256.0'</u>	Commenced <u>JULY 31, 1983</u>	Dip: Coliar <u>-45°</u>
Property <u>RAYLLOYD LES.; WIGGLE CR.</u>	Bearing <u>Az. 180°</u>	Completed <u>AUG. 1, 1983</u>	Etch Test Depth Rdg. True
Township <u>MCCUBBIN TWP. ANT.</u>	Dip <u>-45°</u>	Drilling Co. <u>BRADLEY RES. LTD.</u>	
Location <u>NORTH GRID</u>	Objective	Core Size <u>30.</u>	
<u>2+50 W; 10+50 N.</u>		Casing Left in Hole	



Remarks

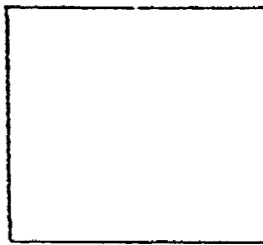
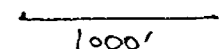
Footage		DESCRIPTION	Sample No.	From	To	Length	Au oz./Am	Ag oz./tm		
From	To									
0.0'	14.0'	CASING.								
14.0'	116.0'	MAFIC VOLCANICS WITH CHLORITIC (JUFF?) ZONES GREEN FINE GRAINED ROCK POOR BANDING AND SCHISTOSITY AT 45° TO CORE AXIS (C.A.) MINOR QUARTZ VEINETS. AT 50.0' ROCK BECOMES MORE TUFFACEOUS. NOTE CRENULATIONS IN BANDING AT ABOUT 90.0'. 100.6-102.2 QUARTZ VEIN, LOW PYRITE.	5821	100.6'	102.2'	1.6'	0.001	0.01		
116.0'	125.0'	CHESTNUT GRAY TO BROWN COLOR SCHISTOSITY AT 45° TO C.A.								
125.0'	182.0'	CHLORITIC TUFF AND IRON FORMATION. ROCK Banded AT APPROX. 45° TO C.A. BUT SOME CRENULATION NOTED. SPREADS QUARTZ VEINING WITH LOW PYRITE. 133.8'-135.8' QUARTZ CARBONATE VEINING. CHLORITE AND PYRITE. 140.0'-142.0' BRECCIATED ZONE QUARTZ AND PYRITE IN CHLORITIC IRON FORMATION. AT 175.0' CARBONATE CHECKS AND BANDS APPEAR WITH CARBONATIZATION BEGINNING TANG BY 182.0'.	5822 5823	133.8' 140.0'	135.8' 142.0'	2.0' 2.0'	0.001 0.003	0.01 0.09		
182.0'	256.0'	QUARTZ CARBONATE ZONE. ROCK IS CHLORITIZED WITH VARIABLE QUARTZ-CARBONATE VEINING AND PYRITE MINERALIZATION. BANDING AT 20°-25° TO C.A. AT 182.0', 90° TO C.A. AT 185.0' AND 45° TO C.A. AT 200.0'. 232.5-242.5 BRECCIATED ZONE QUARTZ-CARBONATE VEINING DARK CHLORITE PYRITE AND LOW ASB. NOTED.	5824 5825 8768 5826	232.5' 236.8' 239.0' 241.2'	233.5' 239.0' 241.2' 242.5'	1.0' 2.2' 2.2' 1.3'	0.49 0.011 0.055 0.002	0.10 0.05 0.03 0.07		
256.0'		END OF HOLE.								

DUPLICATE COPY
POOR QUALITY ORIGINAL
TO FOLLOW

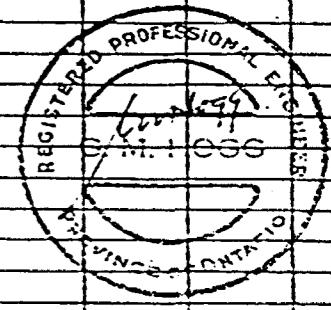


DIAMOND DRILL RECORD

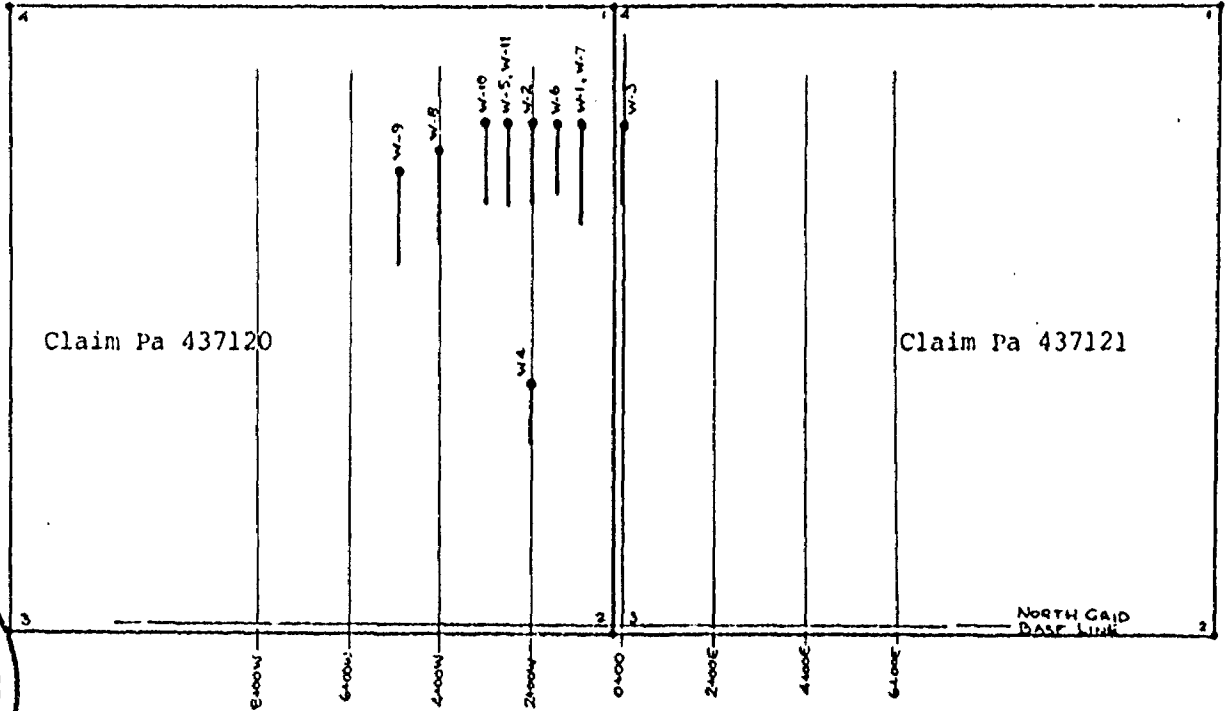
Hole No. W-5

Hole No. <u>W-5</u> Sheet <u>1</u>	Length <u>256.0'</u>	Commenced <u>JULY 31, 1983</u>	Dip: Collar <u>-45°</u>	Location Sketch North  Claim No. <u>R 437120</u> Scale: 1" = 1000' 
Property <u>EMLOYD RES.; WIGGLE CR.</u>	Bearing <u>Az. 180°</u>	Completed <u>AUG. 1, 1983</u>	Etch Test Depth Rdg. True	
Township <u>MCCUBBIN TWP., ONT.</u>	Dip <u>-45°</u>	Drilling Co. <u>BRADLEY RES. LTD.</u>		
Location <u>NORTH GRID</u>	Objective	Core Size <u>RR</u>		
<u>2+50 W.; 10+50 N.</u>		Casing Left in Hole		
Remarks				

Footage		DESCRIPTION	Sample No.	From	To	Length	Au oz./m	Ag oz./m				
From	To											
0.0'	14.0'	CASING.										
14.0'	116.0'	MAFIC VOLCANICS WITH CHLORITIC (TUFF?) ZONES. GREEN, FINE GRAINED ROCK. POOR BANDING AND SCHISTOSITY AT 45° TO CORE AXIS (C.A.). MINOR QUARTZ VEINLETS. AT 50.0' ROCK BECOMES MORE TYPICAL NOTE CEMENTATION IN BANDING AT ABOUT 90.0'.										
		100.6-102.2 QUARTZ VEIN, LOW PYRITE.	5821	100.6'	102.2'	1.6'	0.001	0.01				
116.0'	175.0'	CHERT, GRAY TO BROWN COLOR. SCHISTOSITY AT 45° TO C.A.										
125.0'	182.0'	CHLORITIC TUFF AND IRON FORMATION. ROCK BANNED AT APPROX. 45° TO C.A. BUT SOME CEMENTATION NOTED. SPARSIC QUARTZ VEINING WITH LOW PYRITE.										
		133.8'-135.8' QUARTZ CARBONATE VEINING, CHLORITE AND PYRITE.	5822	133.8'	135.8'	2.0'	0.001	0.01				
		140.0'-142.0' BRECCIATED ZONE QUARTZ AND PYRITE IN CHLORITIC IRON FORMATION. AT 175.0' CARBONATE FLOCKS AND SANDS APPEAR, WITH CARBONATIZATION BECOMING STRONG BY 182.0'.	5823	140.0'	142.0'	2.0'	0.003	0.09				
182.0'	256.0'	QUARTZ CARBONATE ZONE. ROCK IS CHLORITIZED WITH VARIABLE QUARTZ-CARBONATE VEINING AND PYRITE MINERALIZATION. BANDING AT 20°-25° TO C.A. AT 182.0', 80° TO C.A. AT 185.0', AND 45° TO C.A. AT 200.0'.										
		232.5-242.5 BRECCIATED ZONE QUARTZ-CARBONATE VEINING, DARK CHLORITE, PYRITE AND LOW ASBX NOTED.	5824	232.5'	233.5'	1.0'	0.49	0.10				
			5825	236.8'	239.0'	2.2'	0.011	0.05				
256.0'		END OF HOLE.	8768	239.0'	241.2'	2.2'	0.055	0.03				
			5826	241.2'	242.5'	1.3'	0.002	0.07				



N



Claim Pa 437120

Claim Pa 437121

NORTH GRID
BASE LINE



G. M. HOGG & ASSOCIATES LTD.

Raylloyd Resources Ltd.

DRILL HOLE LOCATION PLAN, NORTH GRID
AREA OF THE WIGGLE CREEK PROPERTY,
McCUBBIN TOWNSHIP, ONTARIO

Scale: 1 inch = 400 ft.

GMH Nov. 1983.

400'

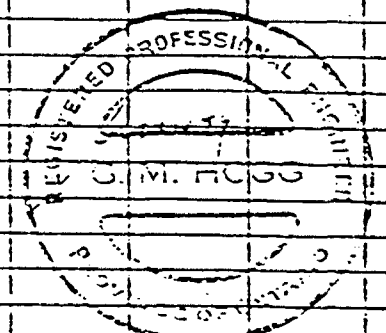
DIAMOND DRILL RECORD

Hole No. W-6

Hole No. <u>W-6</u> Sheet <u>1</u>	Length <u>250.0'</u>	Commenced <u>Aug. 1, 1983</u>	Dip: Collar <u>-45°</u>	Location Sketch North ↑ Claim No. <u>Pa 437120</u> Scale: 1" = 1000' 1000'
Property <u>RAYMOND RES.; WIGGLE CR.</u>	Bearing <u>A2. 180°</u>	Completed <u>AUG. 2, 1983</u>	Etch Test Depth Rdg. True	
Township <u>MCCUBBIN TWP. ONT.</u>	Dip <u>-45°</u>	Drilling Co. <u>BRADLEY RES. LTD.</u>		
Location <u>NORTH GRID.</u> <u>1+50 W; 10+50 N</u>	Objective	Core Size <u>30.</u>		
Remarks			Casing Left in Hole	

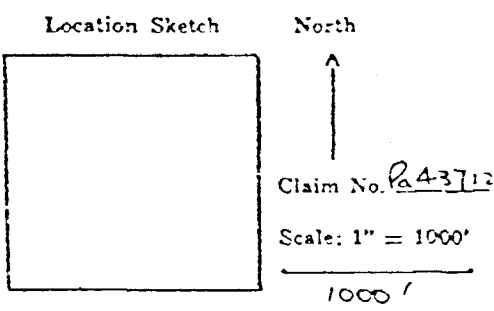
Footage		DESCRIPTION	Sample No.	From	To	Length	Au oz./tm	Ag oz./tm			
From	To										
0.0'	2.0'	CASING.									
2.0'	38.0'	MAFIC VOLCANICS, DARK GREEN COLOR, FINE GRAINED. SOME CHLORITIC (TUFF?) ZONES AND QUARTZ STRINGERS. BANDING INDISTINCT AT 20° TO CORE AXIS (C.A.).									
38.0'	103.5'	CHEST. BROWN TO GRAY IN COLOR. SCHISTOSITY AT 40° TO C.A.									
103.5'	216.0'	97.0'-100.0' CHLORITIC TUFF MINOR IRON FORMATION. CHLORITIC TUFF AND IRON FORMATION. BANDED AT 35° TO 40° TO C.A. PYRITIC MINERALIZATION IN JEANS, AND WITH SPORADIC QUARTZ VEINING.									
		125.0'-126.0' QUARTZ PYRITE AT 5-10%, MINOR ARSENOPYRITE.	5814	125.2	126.0	0.8'	0.021	0.03			
		AT 165.0' BANDING STEEPENS TO 45° TO C.A. AND BY 197.0' CARBONATE FLECKES AND BANDS APPEAR. AT 195.0' ROCK BECOMES STRONGLY CARBONATED WITH COMMON QUARTZ-CARBONATE VEINING. BANDING IS VARIABLE, AVERAGING ABOUT 45° TO C.A.									
		195.0'-197.4' QUARTZ VEINING, MINOR PYRITE.	5815	195.0'	197.4'	2.4'	Tr.	0.01			
216.0'	234.5'	QUARTZ-CARBONATE ZONE. VEINING COMMON WITH QUARTZ-CARBONATE AND DARK CHLORITE.									
		216.8'-217.5' QUARTZ-CARBONATE VEIN WITH PYRITE, LOW ARSENOPYRITE.	5816	216.8'	217.5'	0.7'	0.001	0.01			
234.5'	250.0'	CHLORITIC TUFF AND IRON FORMATION. BANDING STEEPENING FROM 45° TO C.A. TO APPROXIMATELY 55° TO C.A. BY 240.0'.									
250.0'		END OF HOLE.									

DUPLICATE COPY
POOR QUALITY ORIGINAL
TO FOLLOW

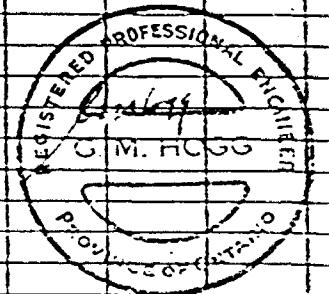


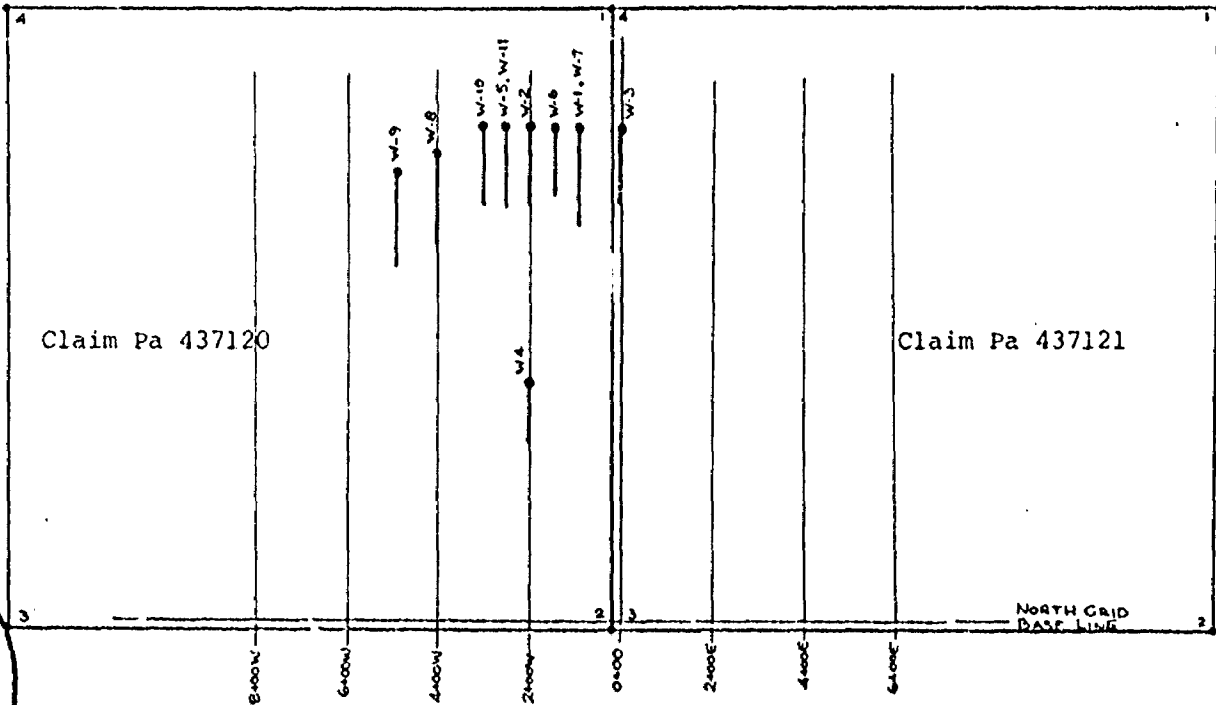
DIAMOND DRILL RECORD

Hole No. W-6

Hole No. <u>W-6</u> Sheet <u>1</u>	Length <u>250.0'</u>	Commenced <u>Aug. 1, 1983</u>	Dip: Collar <u>-45°</u>	Location Sketch 
Property <u>RAYLOND RES.; WIGGLE CR.</u>	Bearing <u>A2. 180°</u>	Completed <u>Aug. 2, 1983</u>	Etch Test Depth Rdg. True	
Township <u>McCUBBIN TWP., ONT.</u>	Dip <u>-45°</u>	Drilling Co. <u>BRADLEY BROS. LTD.</u>		
Location <u>NORTH GRID.</u>	Objective _____	Core Size <u>BQ</u>		
<u>1+50 W ; 10+50 N</u>		Casing Left in Hole _____		
Remarks _____				

Footage		DESCRIPTION	Sample No.	From	To	Length	Au oz./tm	Ag oz./tm			
From	To										
0.0'	2.0'	CASING.									
2.0'	88.0'	MAFIC VOLCANICS, DARK GREEN COLOR, FINE GRAINED. SOME CHLORITIC (TUFF?) ZONES AND QUARTZ STRINGERS. BANDING INDISTINCT AT 40° TO CORE AXIS (C.A.).									
88.0'	103.5'	CHEST. BROWN TO GRAY IN COLOR. SCHISTOSITY AT 40° TO C.A. 97.0'-100.0' CHLORITIC TUFF. MINOR IRON FORMATION.									
103.5'	216.0'	CHLORITIC TUFF AND IRON FORMATION. BANDED AT 35° TO 40° TO C.A. PYRITIC MINERALIZATION IN TEAMS AND WITH SPORADIC QUARTZ VEINING. 125.0'-126.0' QUARTZ PYRITE AT 5-10%, MINOR ARSENOPYRITE. AT 165.0' BANDING STEEPENS TO 45° TO C.A. AND BY 187.0' CARBONATE FLECKS AND BANDS APPEAR. AT 195.0' ROCK BECOMES STRONGLY CARBONATED WITH COMMON QUARTZ-CARBONATE VEINING. BANDING IS VARIABLE, AVERAGING ABOUT 45° TO C.A. 195.0'-197.4' QUARTZ VEINING, MINOR PYRITE.	5814	125.2	126.0'	0.8'	0.021	0.03			
216.0'	234.5'	QUARTZ CARBONATE ZONE. VEINING COMMON WITH QUARTZ, CARBONATE AND DARK CHLORITE.	5815	195.0'	197.4'	2.4'	Tr.	0.01			
234.5'	250.0'	216.8'-217.5' QUARTZ-CARBONATE VEIN WITH PYRITE, LOW ARSENOPYRITE. CHLORITIC TUFF AND IRON FORMATION. BANDING STEEPENING FROM 45° TO C.A. TO APPROXIMATELY 55° TO C.A. BY 240.0'	5816	216.8'	217.5'	0.7'	0.001	0.01			
250.0'		END OF HOLE.									





Claim Pa 437120

Claim Pa 437121

NORTH GRID
BASE LINE



G. M. HOGG & ASSOCIATES LTD.

Raylloyd Resources Ltd.

DRILL HOLE LOCATION PLAN, NORTH GRID
AREA OF THE WIGGLE CREEK PROPERTY,
McCUBBIN TOWNSHIP, ONTARIO

Scale: 1 inch = 400 ft.

400'

GMH Nov. 1983.

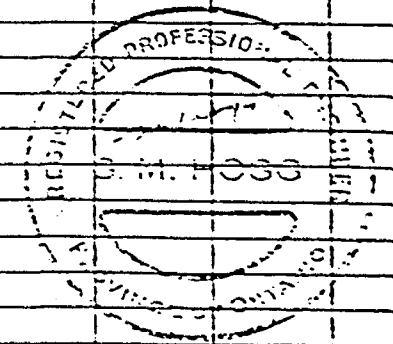
DIAMOND DRILL RECORD

Hole No. W-7

Hole No. <u>W-7</u> Sheet <u>1</u>	Length <u>350.0'</u>	Commenced <u>AUG. 2 1983</u>	Dip: Collar <u>-60°</u>	Location Sketch North ↑ Claim No. <u>Pa 437120</u> Scale: 1" = 1000' 1000'
Property <u>RAYLOND RES. WIGGLE CR.</u>	Bearing <u>A2. 180°</u>	Completed <u>AUG. 3 1983</u>	Etch Test Depth Rdg. True	
Township <u>MCCOMB TWP., ONT.</u>	Dip <u>-60°</u>	Drilling Co. <u>BRADLEY RES. LTD.</u>		
Location <u>NORTH GRID</u> <u>1+05W, 10+50N</u>	Objective	Core Size <u>30.</u>		
Remarks			Casing Left in Hole	

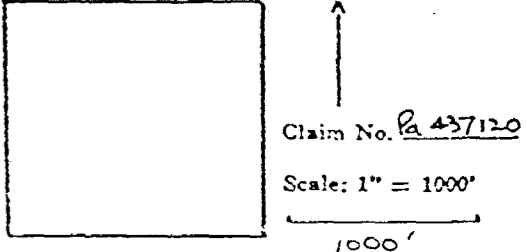
Footage		DESCRIPTION	Sample No.	From	To	Length	Au oz./ton	Ag oz./ton
From	To							
0.0'	2.0'	CASING.						
2.0'	102.5'	MAFIC VOLCANICS WITH MINOR CHLORITIC SECTIONS. BANDED AT 20° TO GRE AXIS (C.A.)						
		3.0-5.0' SWEEPED CHLORITIC ZONE. QUARTZ VEINLETS.						
		22.0-33.5 WHITE QUARTZ VEIN.						
		58.0-57.0 CHLORITIC ZONE SWISSIDITY AT 15° TO C.A.						
		FROM 89.0' ROCK BECOMES MORE CHLORITIC (THERMOPHILUS?) BANDING & SWISSIDITY AT ABOUT 20° TO C.A.	8789	96.6'	97.2'	0.6'	0.001	tr.
		96.6-97.2 CHLORITIC ZONE WITH QUARTZ AND LOW PYRITE.	8790	111.0'	113.0'	2.0'	tr.	tr.
		111.0-113.0 QUARTZ WITH LOW PYRITE.						
102.5'	114.4'	CHERT GRAY IN COLOR WITH CHLORITIC STREAKS AT 20° TO C.A.	8791	131.0'	132.3'	1.3'	0.001	0.02
114.4'	248.5'	CHLORITIC TUFF AND IRON FORMATION. MODERATE TO STRONG DEVELOPMENT OF IRON FORMATION BANDS. BANDING AT 20° TO C.A. AT 115.0' STEEPENING TO 30° TO C.A. AT 135.0'.	8792	248.5'	250.4'	1.9'	0.007	0.02
		131.0-132.8' CHLORITIC ZONE QUARTZ VEINING. PYRITE WITH TRACES OF ASPY.	8794	255.8'	258.4'	2.6'	tr.	0.02
		154.5-155.0' PINK QUARTZ VEIN.	8795	258.4'	259.4'	1.0'	0.033	0.02
		FROM 170.0' CHLORITIC TUFF BECOMES DOMINANT WITH POOR I.F. DEVELOPMENT.	8796	259.4'	261.0'	1.6'	tr.	0.01
		AT 220.0' CARBONATE FLECKS AND VEINLETS ARE PROMINENT AND INCREASE IN FREQUENCY WITH DEPTH.	8797	261.0'	262.0'	1.0'	0.043	0.04
			8798	262.0'	265.0'	3.0'	0.001	0.31
248.5'	272.5'	QUARTZ CARBONATE ZONE CHLORITIC AND STRONGLY VEINED. PYRITE AND ARSENOPYRITE ARE ASSOCIATED WITH STRONGLY VEINED AND BRICKLINED AREAS.	8799	265.0'	267.0'	2.0'	0.001	tr.
			8800	267.0'	268.2'	1.2'	0.020	0.03
272.5'	350.0'	CHLORITIC TUFF AND IRON FORMATION. CARBONATIZED AND PERMANENTLY VEINED WITH QUARTZ-CARBONATE. MINOR PYRITE IS SEEN PRESENT IN VEINED AREAS.	5808	268.2'	271.0'	2.8'	tr.	tr.
		BANDING AT 30°-35° TO C.A. AT CONTACT STEEPENING TO 40° TO C.A. AT 312.0'.	5809	271.0'	272.5'	1.5'	0.003	0.01
		315.0-316.0' QUARTZ CHLORITE PYRITE TO 15°.	5810	315.0'	316.0'	1.0'	0.001	0.02
		316.0-330.0' STRONG IRON FORMATION DEVELOPMENT.						
		330.0-333.0' QUARTZ VEINING.						
350.0'		END OF HOLE.						

DUPLICATE COPY
POOR QUALITY ORIGINAL
TO FOLLOW

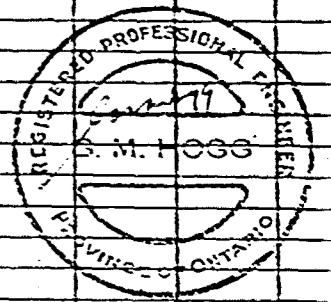


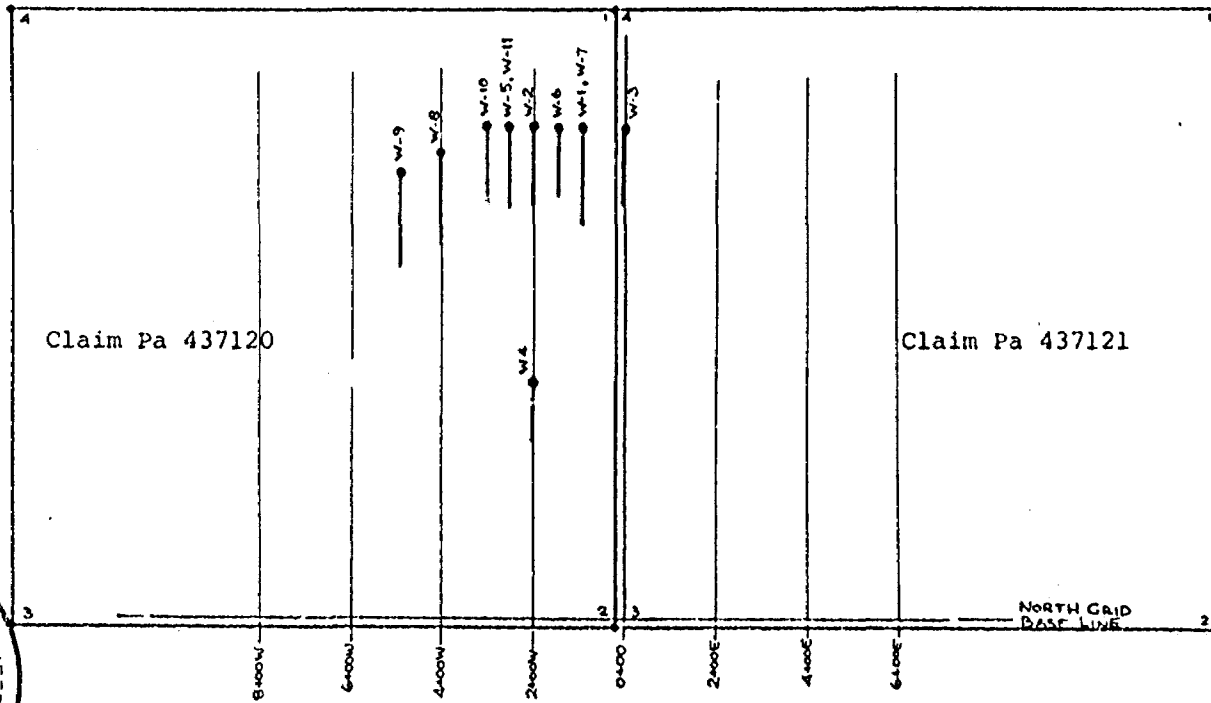
DIAMOND DRILL RECORD

Hole No. W-7

Hole No. <u>W-7</u> Sheet <u>1</u>	Length <u>350.0'</u>	Commenced <u>Aug. 2 1983</u>	Dip: Collar <u>-60°</u>	Location Sketch North 
Property <u>RAYLOND RES. WIGGLE CR.</u>	Bearing <u>A2, 180°</u>	Completed <u>Aug. 3 1983</u>	Etch Test Depth Rdg. True	
Township <u>MCCUBBIN TWP., ONT.</u>	Dip <u>-60°</u>	Drilling Co. <u>BRADLEY RES. LTD.</u>		
Location <u>N8TH GRID</u>	Objective _____	Core Size <u>BQ.</u>		
<u>1+05W, 10+50N</u>		Casing Left in Hole _____		
Remarks _____				

Footage		DESCRIPTION	Sample No.	From	To	Length	Au oz./ton.	Ag oz./ton.										
From	To																	
0.0'	2.0'	C. SING.																
2.0'	102.5'	MAFIC VOLCANICS WITH MINOR CHLORITIC SECTIONS. BANDED AT 20° TO CORE AXIS (C.A.)																
		3.0'-5.0' SHEARED CHLORITIC ZONE, QUARTZ VEINLETS.																
		32.0'-33.5' WHITE QUARTZ VEIN.																
		55.0'-57.0' CHLORITIC ZONE, CHLORITIC AT 15° TO C.A.																
		FROM 88.0' ROCK BECOMES MORE CHLORITIC (TRIFACEDUS?) BANDING & CHLORITIC AT ABOUT 20° TO C.A.	8789	96.6'	97.2'	0.6'	0.001	tr.										
		96.6'-97.0' CHLORITIC ZONE WITH QUARTZ AND LOW PYRITE.	8790	111.0'	113.0'	2.0'	tr.	tr.										
		111.0'-112.0' QUARTZ WITH LOW PYRITE.																
102.5'	114.4'	CHERT, GRAY IN COLOR, WITH CHLORITIC SEAMS AT 20° TO C.A.	8791	131.0'	132.8'	1.8'	0.001	0.02										
114.4'	248.5'	CHLORITIC TUFF AND IRON FORMATION, MODERATE TO STRONG DEVELOPMENT OF IRON FORMATION BANDS. BANDING AT 20° TO C.A. AT 115.0', STEEPENING TO 30° TO C.A. AT 135.0'.	8792	248.5'	250.4'	1.9'	0.007	0.02										
		131.0'-132.8' CHLORITIC ZONE, QUARTZ VEINING, PYRITIC WITH POSS. TRACE OF ASP.	8793	250.4'	255.8'	5.4'	tr.	0.02										
		154.5'-155.0' ROSE QUARTZ VEIN.	8794	255.8'	258.4'	2.6'	tr.	0.02										
		FROM 170.0' CHLORITIC TUFF BECOMES DOMINANT WITH POOR I.F. DEVELOPMENT.	8795	258.4'	259.4'	1.0'	0.033	0.02										
		AT 220.0' CARBONATE FLOCCS AND VEINLETS ARE PROMINENT, AND INCREASE IN FREQUENCY WITH DEPTH.	8796	259.4'	261.0'	1.6'	tr.	0.01										
		248.5'-272.5' QUARTZ CARBONATE ZONE, CHLORITIC AND STRONGLY VEINED. PYRITE AND ARSENOPYRITE ARE ASSOCIATED WITH STRONGLY VEINED AND BECCIATED AREAS.	8797	261.0'	262.0'	1.0'	0.043	0.04										
248.5'	272.5'	QUARTZ CARBONATE ZONE, CHLORITIC AND STRONGLY VEINED. PYRITE AND ARSENOPYRITE ARE ASSOCIATED WITH STRONGLY VEINED AND BECCIATED AREAS.	8798	262.0'	265.0'	3.0'	0.001	0.31										
		272.5'-350.0' CHLORITIC TUFF AND IRON FORMATION, CARBONATED, AND Pervasively veined with QUARTZ-CARBONATE. MINOR PYRITE IS OFTEN PRESENT IN VEINED AREAS.	8799	265.0'	267.0'	2.0'	0.001	tr.										
		BANDING AT 30°-35° TO C.A. AT CONTACT, STEEPENING TO 45° TO C.A. AT 310.0'.	8800	267.0'	268.2'	1.2'	0.020	0.03										
		315.0'-316.0' QUARTZ CHLORITE, PYRITE TO 15%.	5808	268.2'	271.0'	2.8'	tr.	tr.										
		316.0'-330.0' STRONG IRON FORMATION DEVELOPMENT.	5809	271.0'	272.5'	1.5'	0.003	0.01										
		330.0'-333.0' QUARTZ VEINING.	5810	315.0'	316.0'	1.0'	0.001	0.02										
350.0'		END OF HOLE.																





GM HOGG ASSOCIATES LTD.

GMH Nov. 1983.

Raylloyd Resources Ltd.
 DRILL HOLE LOCATION PLAN, NORTH GRID
 AREA OF THE WIGGLE CREEK PROPERTY,
 MCCUBBIN TOWNSHIP, ONTARIO

Scale: 1 inch = 400 ft.

400'

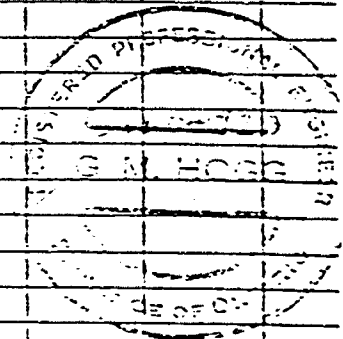
DIAMOND DRILL RECORD

Hole No. W-8

Hole No. <u>W-8</u> Sheet <u>1</u>	Length <u>437.0'</u>	Commenced <u>Aug. 3, 1983</u>	Dip: Collar <u>-45°</u>	Location Sketch North ↑ Claim No. <u>Pa 437120</u> Scale: 1" = 1000' 1000'
Property <u>EMLOYD RES. WIGGLE CR.</u>	Bearing <u>A2. 120°</u>	Completed <u>Aug. 4, 1983</u>	Etch Test Depth Rdg. True	
Township <u>McCUBBIN TWP., ONT.</u>	Dip <u>-45°</u>	Drilling Co. <u>BRADLEY BRAS. LTD.</u>		
Location <u>NORTH GRID</u>	Objective	Core Size <u>30</u>		
<u>4+00 W, 9+90 N.</u>		Casing Left in Hole		
Remarks				

Footage		DESCRIPTION	Sample No.	From	To	Length	Au oz./ton	Ag oz./ton			
From	To										
0.0'	10.0'	CASING									
10.0'	46.8'	MAGIC VOLCANICS. CHLORITIC (TUFFACEOUS?) ZONES WITH MINOR FLOW BRECCIA. BANDING AT ABOUT 45° TO CORE AXIS (C.A).									
46.8'	52.1'	CHERT. BROWN TO GRAY. DUNE BANDING AT 40° TO C.A.									
52.1'	125.5'	CHLORITIC TUFF AND IRON FORMATION. MODERATE IRON FORMATION DEVELOPMENT WITH BANDING AT APPROX 45° TO C.A. 700-92.0' DOMINANTLY CHERTY MAGNETITE IRON FORMATION. ATTITUDE OF BANDING STEEPENS TO ABOUT 55° TO C.A. BY 92.0'. WITH INCREASING CARBONATIZATION AND QUARTZ-CARBONATE VEINING. ROCK STRONGLY CARBONATED BY 109.0'.									
125.5'	136.5'	QUARTZ-CARBONATE ZONE. ROCK IS VARIABLELY BRECCIATED AND CEMENTATED VEINING WITH CHLORITE AND SOME PYRITE COMMON. BANDING VARIES IN ATTITUDE FROM 30° TO C.A. AT 130.0', TO 20° TO C.A. AT 136.0'.	5808	125.8'	129.0'	2.2'	0.001	0.04			
136.5'	261.5'	CHLORITIC TUFF AND IRON FORMATION. IRON FORMATION DEVELOPMENT NOT STRONG. ROCK IS STRONGLY CARBONATED WITH MODERATE VEIN DEVELOPMENT. BANDING VARIABLE IN ATTITUDE FROM 45° TO C.A. AT 150.0', TO 60° TO C.A. AT 165.0'. 189.0-194.0' ZONE STRONGLY VEINED WITH QUARTZ-CARBONATE. 210.0-226.0' MAINLY CHERTY IRON FORMATION WITH SOME PYRITE BANDING AT 226.0' IS ABOUT 70° TO C.A., DECREASING TO 60° TO C.A. BY 240.0'.									
261.5'	275.6'	CHERT. BROWN TO GRAY COLOR. MINOR CHLORITIC STAINS AND CARBONATIZATION.	5833	275.6'	277.8'	2.2'	0.002	0.04			
275.6'	280.7'	QUARTZ-CARBONATE ZONE. BRECCIATED VEINED AND CHLORITIC. PYRITE AND MINOR ASPY PRESENT LOCALLY.	5834	277.8'	280.7'	2.9'	0.002	0.07			
280.7'	305.5'	GRAYWACKE. GRAY SILICEOUS ROCK WITH VARIABLE CHLORITE DEVELOPMENT. BANDING GENERALLY INDISTINCT AT ABOUT 45° TO C.A., CARBONATED.									
305.5'	332.0'	CHLORITIC TUFF AND IRON FORMATION. WELL CARBONATED WITH GENERALLY STEEP BANDING AT ABOUT 70° TO C.A. BUT SOME CEMENTATION NOTED.	5835	316.2'	317.7'	1.5'	0.036	0.07			
		316.0-319.0' QUARTZ-CARBONATE ZONE. CHLORITIC WITH QUARTZ AND ASPY DISSEM AND IN FRACTURE.	5836	317.7'	319.0'	1.3'	0.012	0.05			
		322.0-325.5' BANDED IRON FORMATION WITH CARBONATE QUARTZ, PYRITE AND MINOR ASPY.	5837	322.0'	324.5'	2.5'	0.011	0.08			
			5838	324.5'	325.5'	1.0'	0.019	0.07			
332.0'	355.0'	GRAYWACKE CARBONATE. RICH AND CHLORITIC AREAS BANDED AT ABOUT 70° TO C.A. 341.9-342.3' TUFFACEOUS AND CHLORITIC SECTION WITH SOME QUARTZ AND PYRITE.	5839	341.3'	342.3'	1.0'	0.003	0.24			

DUPLICATE COPY
POOR QUALITY ORIGINAL
TO FOLLOW

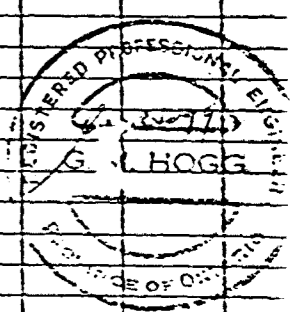


DIAMOND DRILL RECORD

Hole No. W-8

Hole No. <u>W-8</u> Sheet <u>1</u>	Length <u>437.0'</u>	Commenced <u>Aug. 3, 1983</u>	Dip: Collar <u>-45°</u>	Location Sketch North ↑ Claim No. <u>Pa 437120</u> Scale: 1" = 1000' 1000'
Property <u>EMILY AND LES, WAGLE CR.</u>	Bearing <u>A2. 180°</u>	Completed <u>Aug. 4, 1983</u>	Etch Test _____ Depth _____ Rdg. _____ True _____	
Township <u>MCCUBBIN TWP., ONT.</u>	Dip <u>-45°</u>	Drilling Co. <u>BRADLEY BROS. LTD.</u>	Core Size <u>20</u>	
Location <u>NORTH GRID</u>	Objective _____	Casing Left in Hole _____		
<u>4100 W, 9190 N.</u>				
Remarks _____				

Footage		DESCRIPTION	Sample No.	From	To	Length	Au oz./ton	Ag oz./ton				
From	To											
0.0'	10.0'	CASING										
10.0'	46.8'	MAFIC VOLCANICS, CHLORITIC (TUFFACEOUS?) ZONES WITH MINOR FLOW BRECCIA, BANDING AT ABOUT 45° TO CORE AXIS (C.A.)										
46.8'	52.1'	CHERT, BROWN TO GRAY, POOR BANDING AT 40° TO C.A.										
52.1'	125.5'	CHLORITIC TUFF AND IRON FORMATION, MODERATE IRON FORMATION DEVELOPMENT WITH BANDING AT APPROX 45° TO C.A. 700-920' DOMINANTLY CHERTY MAGNETITE IRON FORMATION ATTITUDE OF BANDING STEEPENS TO ABOUT 55° TO C.A. BY 920', WITH INCREASING CARBONATIZATION AND QUARTZ-CARBONATE VEINING. ROCK STRONGLY CARBONATED BY 109.0'										
125.5'	136.5'	QUARTZ-CARBONATE ZONE. ROCK IS VARIABLY BRECCIATED AND CEMENTATED. VEINING WITH CHLORITE AND SOME PYRITE COMMON. BANDING VARIES IN ATTITUDE FROM 80° TO C.A. AT 130.0', TO 30° TO C.A. AT 136.0'	8708	125.8'	128.0'	2.2'	0.001	0.04				
136.5'	261.5'	CHLORITIC TUFF AND IRON FORMATION. IRON FORMATION DEVELOPMENT NOT STRONG. ROCK IS STRONGLY CARBONATED WITH MODERATE VEIN DEVELOPMENT. BANDING VARIABLE IN ATTITUDE FROM 45° TO C.A. AT 150.0', TO 60° TO C.A. AT 165.0'. 189.0-194.0' ZONE STRONGLY VEINED WITH QUARTZ-CARBONATE. 210.0-226.0' MAINLY CHERTY IRON FORMATION WITH SOME PYRITE. BANDING AT 226.0' IS ABOUT 70° TO C.A., DECREASING TO 60° TO C.A. BY 240.0'										
261.5'	275.6'	CHERT, BROWN TO GRAY COLOR, MINOR CHLORITIC SEAMS AND CARBONATIZATION.										
275.6'	280.7'	QUARTZ-CARBONATE ZONE. BRECCIA, 3D VEINED AND CHLORITIC. PYRITE AND MINOR ASPY PRESENT LOCALLY.	5833	275.6'	277.8'	2.2'	0.002	0.04				
			5834	277.8'	280.7'	2.9'	0.002	0.07				
280.7'	305.5'	GRAYWACKE, GRAY SILICEOUS ROCK WITH VARIABLE CHLORITE DEVELOPMENT. BANDING GENERALLY INDISTINCT AT ABOUT 45° TO 50° TO C.A., CARBONATED.										
305.5'	332.0'	CHLORITIC TUFF AND IRON FORMATION, WELL CARBONATED WITH GENERALLY STEEP BANDING AT ABOUT 70° TO C.A. BUT SOME CEMENTATION NOTED.	5835	316.2'	317.7'	1.5'	0.036	0.07				
			5836	317.7'	319.0'	1.3'	0.012	0.05				
		316.0-319.0' QUARTZ-CARBONATE ZONE CHLORITIC, WITH PYRITE AND ASPY DOTS AND W. FEATURES	5837	322.0'	324.5'	2.5'	0.011	0.08				
		322.0-325.5' BANDED IRON FORMATION WITH CARBONATE, QUARTZ, PYRITE AND MINOR ASPY.	5838	324.5'	325.5'	1.0'	0.019	0.07				
332.0'	355.0'	GRAYWACKE CARBONATE, RICH AND CHLORITIC AREAS, BANDED AT ABOUT 70°-75° TO C.A. 341.8-342.8' TUFFACEOUS AND CHLORITIC SECTION WITH SOME QUARTZ AND PYRITE.	5839	341.8'	342.8'	1.0'	0.003	0.24				



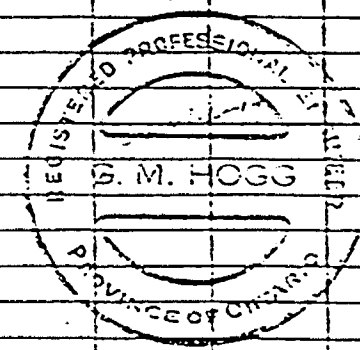
DIAMOND DRILL RECORD

Hole No. W-8

Hole No. <u>W-8</u> Sheet <u>2</u> Property <u>RAYMOND RES. WIGGLE CR.</u> Township <u>MCCUBBIN TWP, ONT.</u> Location _____ _____ _____	Length _____	Commenced _____	Dip: Collar _____	Location Sketch North <div style="text-align: center;">↑</div> Claim No. _____ Scale: 1" = 1000' <div style="text-align: center;"> ----- 1000'</div>
	Bearing _____	Completed _____	Etch Test	
	Dip _____	Drilling Co. _____	Depth	
	Objective _____	Core Size _____	Rdg.	
	Casing Left in Hole _____		True	
Remarks _____				

Footage		DESCRIPTION	Sample No.	From	To	Length
From	To					
355.0	362.0	CHERT, BROWN IN COLOR, CARBONATED.				
362.0	372.0	CHLORITIC TUFF AND IRON OXIDATION CYCLIC BANDS AND BANDING AT 70-20° TO S.A.				
372.0	437.0	GRAYWACKE SILICEOUS ROCK WITH CHLORITIC AREAS AND WEAK CARBONATIZATION. INDISTINCT BANDING AT ABOUT 70° TO S.A.				
437.0		END OF HOLE				

**DUPLICATE COPY
POOR QUALITY ORIGINAL
TO FOLLOW**

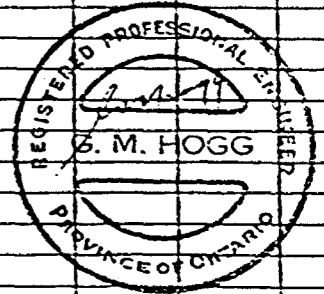


DIAMOND DRILL RECORD

Hole No. W-8

Hole No. <u>W-8</u> Sheet <u>2</u>	Length _____	Commenced _____	Dip: Collar _____	Location Sketch	North ↑
Property <u>KAYLOD RES.; WIGGLE CR.</u>	Bearing _____	Completed _____	Etch Test _____	<div style="border: 1px solid black; width: 80px; height: 80px; margin: 0 auto;"></div>	Claim No. _____ Scale: 1" = 1000' 1000'
Township <u>MCCASIN TWP., ONT.</u>	Dip _____	Drilling Co. _____	Depth _____ Rdg. _____ True _____		
Location _____	Objective _____	Core Size _____	_____		
_____	_____	Casing Left in Hole _____	_____		
Remarks _____					

Footage		DESCRIPTION	Sample No.	From	To	Length													
From	To																		
355.0	362.0	CHERT, BROWN IN COLOR, CARBONATED.																	
362.0	372.0	CHLORITIC TUFF AND IRON FORMATIONAL PYRITIC TEARS, AND BANDING AT 75°-80° TO G.A.																	
372.0	437.0	GRAYWACKE, SILICEOUS ROCK WITH CHLORITIC AREAS AND WEAK CARBONATIZATION. INDISTINCT BANDING AT ABOUT 70° TO G.A.																	
437.0		END OF HOLE																	



Claim Pa 437120

Claim Pa 437121

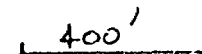
NORTH GRID
BASE LINE



G.M. HOGG & ASSOCIATES LTD.

Raylloyd Resources Ltd.
DRILL HOLE LOCATION PLAN, NORTH GRID
AREA OF THE WIGGLE CREEK PROPERTY,
McCUBBIN TOWNSHIP, ONTARIO

Scale: 1 inch = 400 ft.



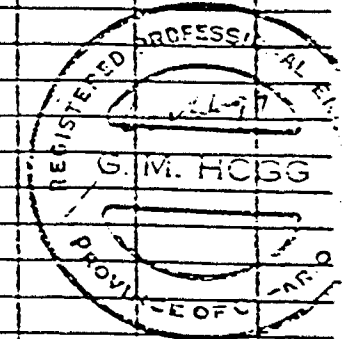
GMH Nov. 1983.

DIAMOND DRILL RECORD

Hole No. W-9

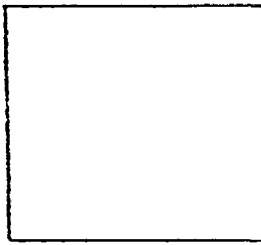
Hole No. <u>W-9</u> Sheet <u>1</u>	Length <u>343.0'</u>	Commenced <u>AUG 4, 1983</u>	Dip: Coliar <u>-45°</u>	Location Sketch North ↑ Claim No. <u>Pa 437120</u> Scale: 1" = 1000' 1000'
Property <u>RAYLORD RES. WIGGLE CR.</u>	Bearing <u>AZ. 180°</u>	Completed <u>AUG 5, 1983</u>	Etch Test Depth Rdg. True	
Township <u>MCCUBBIN TWP. ONT.</u>	Dip <u>-45°</u>	Drilling Co. <u>BRADLEY BROS. LTD.</u>	<p>DUPLICATE COPY POOR QUALITY ORIGINAL TO FOLLOW</p>	
Location <u>NORTH GRID</u> <u>5+00W, 9+50N.</u>	Objective	Core Size <u>30</u>		
Remarks				

Footage		DESCRIPTION	Sample No.	From	To	Length	Au oz./ton.	Ag oz./ton.			
From	To										
0.0'	9.0'	CASING									
9.0'	186.0'	CHLORITIC TUFF AND IRON FORMATION, BANDED AT 30°-45° TO CORE AXIS (C.A.), MODERATELY CARBONATED WITH GOOD IRON FORMATION DEVELOPMENT. NOTE 0.5' PURE QUARTZ VEIN AT 11.0' AND 1.0' WHITE QUARTZ VEIN AT 46.5'. MINOR WHITE QUARTZ VEINING COMMON WITH VERY LOW PYRITE MINERALIZATION (SOMETIMES PRESENT (eg. 68.5-69.3)).	5817	68.5'	69.3'	0.08'	Tr.	Tr.			
	97.3-100.3	QUARTZ CARBONATE ZONE. CHLORITIC WITH LOW PYRITE, BSS TRACE ASRY.	8710	97.3'	100.3'	3.0'	0.004	0.05			
	128.5-130.5	CHLORITIC ZONE WITH QUARTZ-CARBONATE STRINGERS AND LOW PYRITE.	5818	128.5'	130.5'	2.0'	0.001	0.02			
	147.0-148.5	QUARTZ CARBONATE ZONE WITH PYRITE.	5819	147.0'	148.0'	1.0'	0.056	0.03			
	165.5-186.0	MAINLY IRON FORMATION, BANDED AT 50° TO C.A. LOCAL CRENNULATIONS.									
186.0'	206.5'	GRAYWACKE, SILICEOUS AND CARBONATED ROCK WITH OCCASIONAL CHLORITIC SECTIONS AND MINOR QUARTZ VEINING. INDISTINCT BANDING AT ABOUT 60° TO C.A.									
206.5'	232.5'	CHLORITIC TUFF AND IRON FORMATION, ROCK WELL CARBONATED WITH ZONES OF QUARTZ CARBONATE VEINING AND LOW PYRITE (eg. 214.5-218.0). ROCK BECOMES MORE SILICEOUS FROM 222.0' WITH INDISTINCT BANDING AT 45° TO C.A.	5820	214.5'	218.0'	3.5'	0.004	0.02			
232.5'	233.5'	CHERT, GRAY MASSIVE.									
233.5'	278.5'	GRAYWACKE, GRAY SILICEOUS ROCK WITH VARIABLY CHLORITIC SECTIONS AND INDISTINCT BANDING AT ABOUT 45° TO C.A. AT 235.0'.									
	237.0-248.5	CHLORITIC TUFF AND IRON FORMATION ZONE.									
	268.0-269.0	CHERT, GRAY BANDING AT 60° TO C.A. BY 272.0'.									
278.5'	300.0'	CHLORITIC TUFF AND IRON FORMATION. ROCK IS WELL CARBONATED WITH BANDING AT APPROX 60° TO C.A. ZONES OF QUARTZ-CARBONATE WITH PYRITE AND MINOR ASBY (eg. 287.8-291.0).	5827	287.8'	288.9'	1.1'	0.026	0.09			
			5828	288.9'	289.6'	0.7'	0.023	0.09			
			5829	289.6'	291.0'	1.4'	0.029	0.08			
300.0'	343.0'	GRAYWACKE, SILICEOUS, POORLY BANDED ROCK WITH MINOR CHLORITIC ZONES. BANDING AT ABOUT 80° TO C.A.	5830	295.5'	296.5'	1.0'	0.009	0.09			
		321.2-322.0 WHITE QUARTZ VEIN.									
		325.5-337.4 CHERT, BROWN TO GRAY.									
343.0'		END OF HOLE									

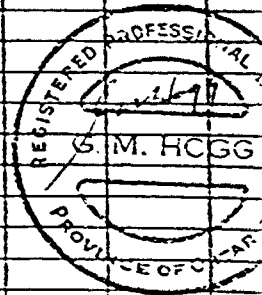


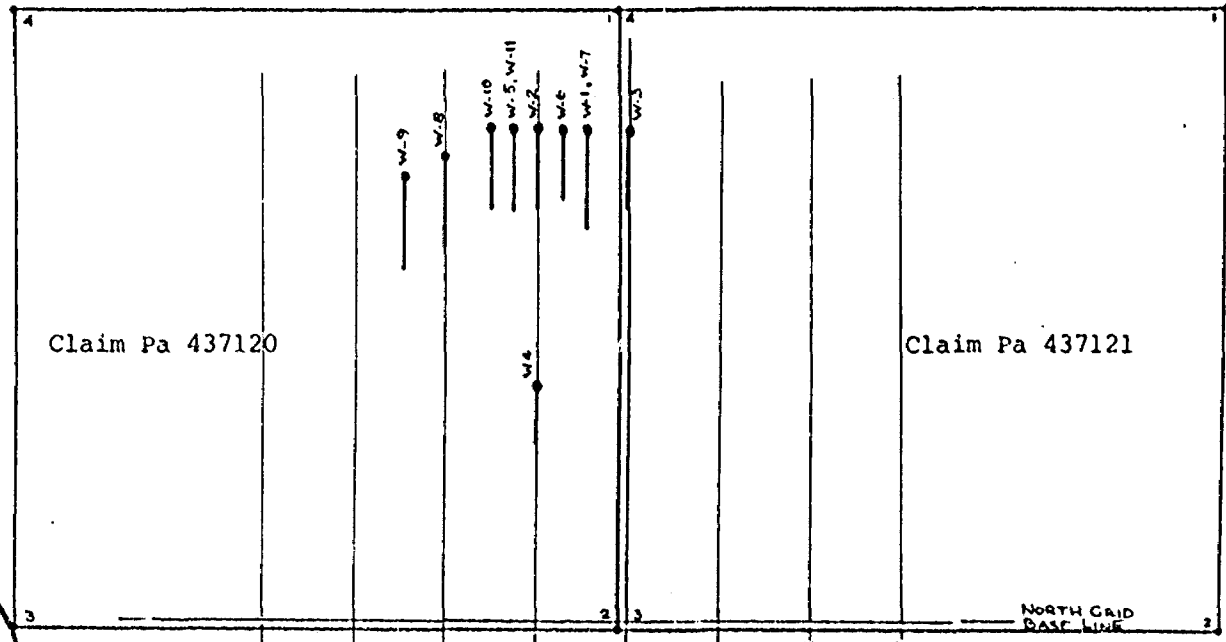
DIAMOND DRILL RECORD

Hole No. W-9

Hole No. <u>W-9</u> Sheet <u>1</u>	Length <u>343.0'</u>	Commenced <u>AUG. 4, 1983</u>	Dip: Collar <u>-45°</u>	Location Sketch North  Claim No. <u>Pa 437120</u> Scale: 1" = 1000' 1000'
Property <u>RAYMOND LES.; WIGGLE CR.</u>	Bearing <u>Az. 180°</u>	Completed <u>AUG. 5, 1983</u>	Etch Test Depth Rdg. True	
Township <u>MCCUBBIN TWP., ONT.</u>	Dip <u>-45°</u>	Drilling Co. <u>BROOKLYN BRAS. LTD.</u>		
Location <u>NORTH GRID</u>	Objective _____	Core Size <u>BQ</u>		
<u>5+00W, 9+50N.</u>		Casing Left in Hole _____		
Remarks _____				

Footage		DESCRIPTION	Sample No.	From	To	Length	Au oz./tm.	Ag oz./tm.				
From	To											
0.0'	9.0'	CASING										
9.0'	186.0'	CHLORITIC TUFF AND IRON FORMATION, BANDED AT 30°-45° TO CORE AXIS (C.A.), MODERATELY CARBONATED WITH GOOD IRON FORMATION DEVELOPMENT. NOTE 0.5' PINK QUARTZ VEIN AT 17.0' AND 1.0' WHITE QUARTZ VEIN AT 46.5'. MINOR WHITE QUARTZ VEINING COMMON WITH VERY LOW PYRITE MINERALIZATION (SOMETIMES PRESENT (eg. 68.5-69.3)).	SB17	68.5'	69.3'	0.08'	Tr.	Tr.				
		97.3-100.3 QUARTZ CARBONATE ZONE, CHLORITIC WITH LOW PYRITE, BSS TRACE ASSY.	8710	97.3'	100.3'	3.0'	0.004	0.05				
		128.5-130.5 CHLORITIC ZONE WITH QUARTZ-CARBONATE STRINGERS AND LOW PYRITE.	5818	128.5'	130.5'	2.0'	0.001	0.02				
		147.0-148.5 QUARTZ CARBONATE ZONE WITH PYRITE.	5819	147.0'	148.0'	1.0'	0.056	0.03				
186.0'	206.5'	165.5-186.0 MAINLY IRON FORMATION, BANDED AT 50° TO C.A. LOCAL GRANULATIONS. GRAYWACKE, SILICEOUS AND CARBONATED ROCK WITH OCCASIONAL CHLORITIC SECTIONS AND MINOR QUARTZ VEINING. INDISTINCT BANDING AT ABOUT 60° TO C.A.										
206.5'	232.5'	CHLORITIC TUFF AND IRON FORMATION, ROCK WELL CARBONATED WITH ZONES OF QUARTZ CARBONATE VEINING AND LOW PYRITE (eg. 214.5-218.0). ROCK BECOMES MORE SILICEOUS FROM 222.0' WITH INDISTINCT BANDING AT 45° TO C.A.	5820	214.5'	218.0'	3.5'	0.004	0.02				
232.5'	233.5'	CHEST GRAY MASSIVE.										
233.5'	278.5'	GRAYWACKE, GRAY SILICEOUS ROCK WITH VARIABLY CHLORITIC SECTIONS AND INDISTINCT BANDING AT ABOUT 45° TO C.A. AT 235.0'. 237.0-248.5 CHLORITIC TUFF AND IRON FORMATION ZONE. 268.0-269.0 CHEST GRAY BANDING AT 60° TO C.A. BY 272.0'										
278.5'	300.0'	CHLORITIC TUFF AND IRON FORMATION. ROCK IS WELL CARBONATED WITH BANDING AT APPROX 60° TO C.A. ZONES OF QUARTZ-CARBONATE WITH PYRITE AND MINOR ASSY (eg. 287.0-291.0).	5827	287.8'	288.9'	1.1'	0.026	0.09				
			5828	288.9'	289.6'	0.7'	0.023	0.09				
			5829	289.6'	291.0'	1.4'	0.029	0.08				
300.0'	343.0'	GRAYWACKE, SILICEOUS POORLY BANDED ROCK WITH MINOR CHLORITIC ZONES BANDING AT ABOUT 80° TO C.A. 321.2-322.0 WHITE QUARTZ VEIN. 325.5-337.4 CHEST, BROWN TO GRAY.	5830	295.5'	296.5'	1.0'	0.009	0.09				
343.0'		END OF HOLE										

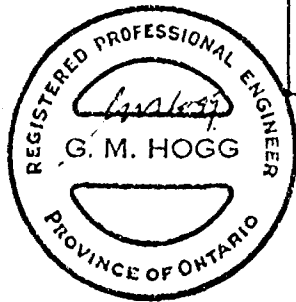




Claim Pa 437120

Claim Pa 437121

NORTH GRID
BASE LINE



G. M. HOGG & ASSOCIATES LTD.

Raylloyd Resources Ltd.

DRILL HOLE LOCATION PLAN, NORTH GRID
AREA OF THE WIGGLE CREEK PROPERTY,
McCUBBIN TOWNSHIP, ONTARIO

Scale: 1 inch = 400 ft.

400'

GMH Nov. 1983.

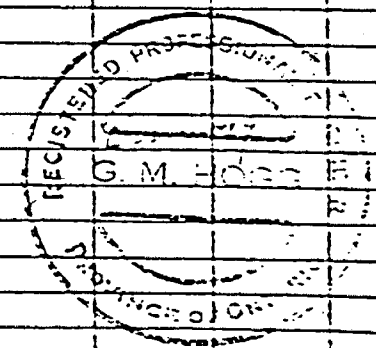
DIAMOND DRILL RECORD

Hole No. W-10

Hole No. <u>W-10</u> Sheet <u>1</u>	Length <u>282.0'</u>	Commenced <u>AUGUST 7, 1983</u>	Dip: Collar <u>-45°</u>	Location Sketch North Claim No. <u>Pa 437120</u> Scale: 1" = 1000'
Property <u>RAYLOND RES. WIGGLE CR.</u>	Bearing <u>Az. 180°</u>	Completed <u>AUGUST 5, 1983</u>	Etch Test Depth Rdg. True	
Township <u>MCCUBBIN TWP, ONT.</u>	Dip <u>-45°</u>	Drilling Co. <u>BADLEY BROS. LTD.</u>	Core Size <u>30</u>	
Location <u>NORTH GRID AT 2100 W, 10+50N</u>	Objective _____	Casing Left in Hole _____	_____	
Remarks _____				

Footage		DESCRIPTION	Sample No.	From	To	Length	Au oz./tm.	Ag oz./tm.		
From	To									
0.0'	14.0'	CASING								
14.0'	129.5'	MAFIC VOLCANICS WITH CHLORITIC SECTIONS. BANDING INDISTINCT AT ABOUT 45° TO CORE AXIS (C.A.) 21.0-23.0 QUARTZ VEINLETS, SPECIATION. 33.0-41.0 DARK GRAY CHERT ZONE. AT 45.0' BANDING STEEPENS TO 60° TO C.A., RETURNING TO 45° TO C.A. BY 55.0'. 70.0-71.5 CHLORITIC TUFF FOLLOWING 2" ELONG BRECCIA SEAM. FROM 75.0' ROCK CONTAINS FREQUENT CHLORITIC SECTIONS AND ELONG BRECCIA STEMS. MINOR QUARTZ VEINING COMMON (eg. 115.0-118.0 zone of Qz veinlets).								
129.5'	135.5'	CHERT, BROWN, WITH MASSIVE TO BANDED SECTIONS. QUARTZ VEIN (1") AT 134.0'								
135.5'	184.0'	CHLORITIC TUFF AND IRON FORMATION. DOMINANTLY THIN BANDED IRON FORMATION TO 159.5' AND MAINLY CHLORITIC TUFF THEREAFTER. NOTE CONTACT AREA (135.5-136.0) APPEARS BRECCIATED. AT 140.0' BANDING IS ABOUT 60° TO C.A., STEEPENING TO 70° TO C.A. BY 160.0'. MINOR PYRITE PRESENT. FROM 175.0' ROCK BECOMES STRONGLY CARBONATED IN FLECKS AND BANDS.								
184.0'	203.0'	QUARTZ-CARBONATE ZONE. BRECCIATED ZONES CONTAIN DARK CHLORITE AND PERMINENT QUARTZ-CARBONATE VEINING (TO 25% ROCK VOLUME). LOW PYRITE MINERALIZATION OCCURS SPORADICALLY (eg. 187.0-189.5 2-3%).	8709	187.0'	189.5'	2.5'	0.002	0.06		
203.0'	224.0'	CHLORITIC TUFF CARBONATED AS ABOVE, WITH MINOR QUARTZ-CARBONATE VEINING. NO IRON FORMATION BANDS NOTED.								
224.0'	243.5'	QUARTZ-CARBONATE ZONE. STRONG QUARTZ-CARBONATE VEINING, BANDING AT ABOUT 70° TO C.A., BUT BRECCIATED AND CORRELATED AREAS COMMON. PYRITE AND TRACES ASBY PRESENT (eg. 231.0-235.0').	5846	230.8'	231.8'	1.0'	0.038	0.06		
			5847	231.8'	233.0'	1.2'	0.003	0.04		
			5848	233.0'	234.6'	1.6'	0.005	0.01		
243.5'	282.0'	CHLORITIC TUFF AND IRON FORMATION. IRON FORMATION VERY WEAKLY DEVELOPED. VARIABLE QUARTZ-CARBONATE VEINING AND CARBONATIZATION. 247.0-262.0 GRAYWACKE(?) ROCK BECOMES GRAY IN COLOR WITH INDISTINCT BANDING. FROM 264.0' QUARTZ VEINING IS PROMINENT AND JUST NARROW IRON FORMATION BANDS ARE PRESENT.								
282.0'		END OF HOLE								

**DUPLICATE COPY
POOR QUALITY ORIGINAL
TO FOLLOW**



DIAMOND DRILL RECORD

Hole No. W-10

Hole No. <u>W-10</u> Sheet <u>1</u>	Length <u>282.0'</u>	Commenced <u>August 7, 1983</u>	Dip: Collar <u>-45°</u>
Property <u>RAYLOND RES., WIGGLE CR.</u>	Bearing <u>A2, 180°</u>	Completed <u>August 8, 1983</u>	Etch Test _____
Township <u>MCCUBBIN TWP., ONT.</u>	Dip <u>-45°</u>	Drilling Co. <u>BANDLEY BROS. LTD.</u>	Depth _____
Location <u>NORTH CRID. AT</u>	Objective _____	Core Size <u>BQ</u>	Rdg. _____
<u>3400 W., 10+50 N.</u>		Casing Left in Hole _____	True _____

Location Sketch

North ↑

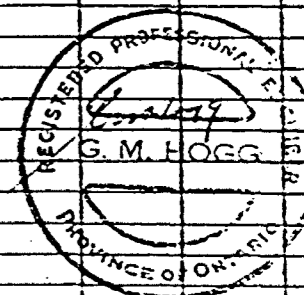
Claim No. Pa 437120

Scale: 1" = 1000'

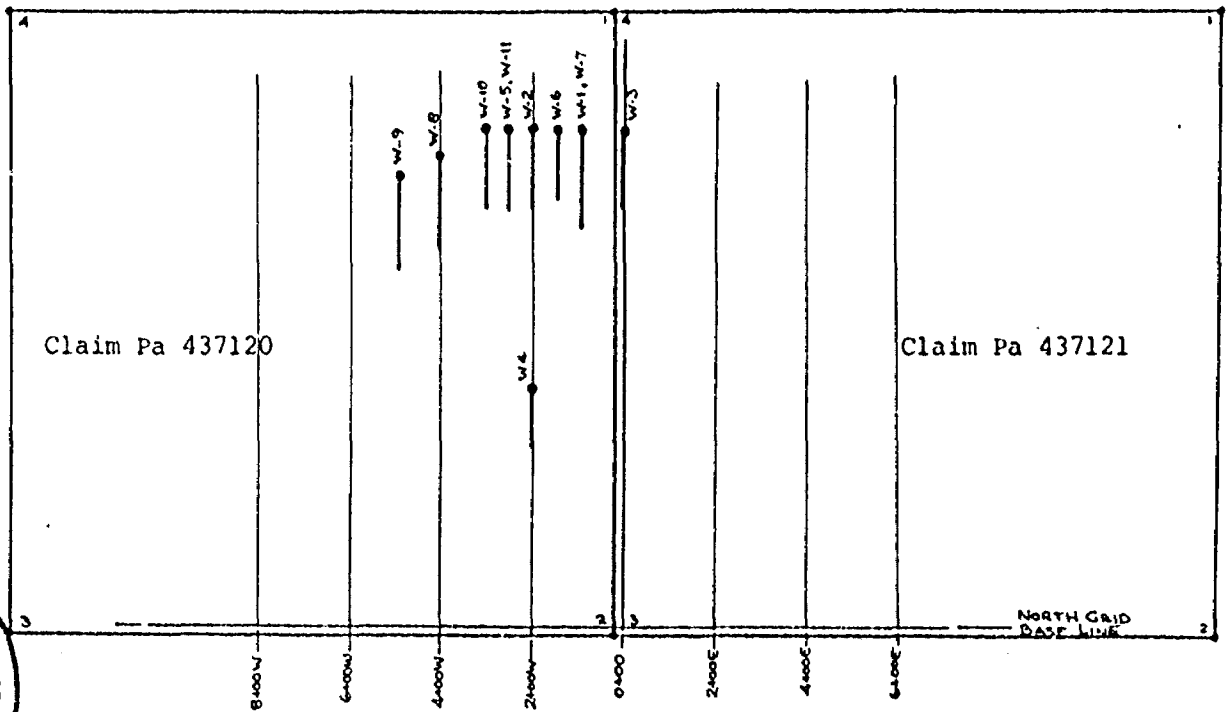
1000'

Remarks _____

Footage		DESCRIPTION	Sample No.	From	To	Length	Au oz/tm	Ag oz/tm		
From	To									
0.0'	14.0'	CASING								
14.0'	129.5'	MAFIC VOLCANICS WITH CHLORITIC VEGETIONS. BANDING INDISTINCT AT ABOUT 45° TO SOUTHWEST (S.A.) 21.0-23.0 QUARTZ VEINLETS, SPECIATION 33.0-41.0 DARK GRAY CHERT ZONE. AT 45.0' BANDING TENDS TO 60° TO C.A. RETURNING TO 45° TO C.A. BY 55.0'. 70.0-71.5 CHLORITIC TUFF FOLLOWING A 1" FLOW BRECCIA SEAM. FROM 75.0' ROCK CONTAINS FREQUENT CULARITIC SECTIONS AND FLOW BRECCIA STRANS. MINOR QUARTZ VEINING COMMON (eg. 115.0-118.0 zone of Q5 veinlets)								
129.5'	135.5'	CHERT. BROWN, WITH MASSIVE TO BANDER SECTIONS. QUARTZ VEIN (1") AT 134.0'								
135.5'	184.0'	CHLORITIC TUFF AND IRON FORMATION. DOMINANTLY THIN BANNED IRON FORMATION TO 159.5' AND MAINLY CHLORITIC TUFF THEREAFTER. NOTE CONTACT AREA (135.5'-136.0') APPEARS BRECCIATED. AT 140.0' BANDING IS ABOUT 60° TO C.A. STEEPENING TO 70° TO C.A. BY 160.0'. MINOR PYRITE PRESENT. FROM 175.0' ROCK BECOMES STRONGLY CARBONATED IN FLECKS AND BANDS.								
184.0'	203.0'	QUARTZ-CARBONATE ZONE. BRECCIATED ZONES CONTAIN DARK CHLORITE AND PROMINENT QUARTZ-CARBONATE VEINING (TO 25% ROCK VOLUME). LOW PYRITE MINERALIZATION OCCURS SPORADICALLY (eg. 187.0-189.5 2-3%).	8709	187.0'	189.5'	2.5'	0.002	0.06		
203.0'	224.0'	CHLORITIC TUFF, CARBONATED AS ABOVE, WITH MINOR QUARTZ-CARBONATE VEINING AND IRON FORMATION BANDS NOTED.								
224.0'	243.5'	QUARTZ-CARBONATE ZONE. STRONG QUARTZ-CARBONATE VEINING, BANDING AT ABOUT 70° TO C.A., BUT CARBONATED AND BRECCIATED AREAS COMMON. PYRITE AND TRACES ASBY PRESENT (eg. 231.0-235.0').	5846	230.8'	231.8'	1.0'	0.038	0.06		
			5847	231.8'	233.0'	1.2'	0.003	0.04		
			5848	233.0'	234.6'	1.6'	0.005	0.01		
243.5'	282.0'	CHLORITIC TUFF AND IRON FORMATION. IRON FORMATION VERY WEAKLY DEVELOPED. VARIABLE QUARTZ-CARBONATE VEINING AND CARBONATIZATION. 247.0-262.0 GRAYWACKE(?) ROCK BECOMES GRAY IN COLOR WITH INDISTINCT BANDING FROM 264.0' QUARTZ VEINING IS PROMINENT, AND JUST NARROW IRON FORMATION BANDS ARE PRESENT.								
282.0'		END OF HOLE								



N



Claim Pa 437120

Claim Pa 437121

NORTH GRID
BASE LINE



G. M. HOGG & ASSOCIATES LTD.

Raylloyd Resources Ltd.

DRILL HOLE LOCATION PLAN, NORTH GRID
AREA OF THE WIGGLE CREEK PROPERTY,
McCUBBIN TOWNSHIP, ONTARIO

Scale: 1 inch = 400 ft.

400'

GMH Nov. 1983.

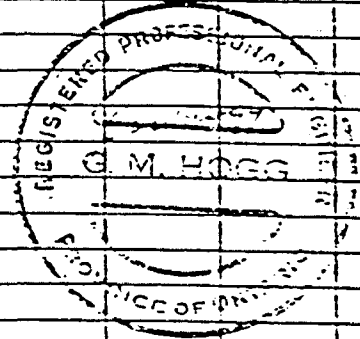
DIAMOND DRILL RECORD

Hole No. W-11

Hole No. <u>W-11</u> Sheet <u>1</u>	Length <u>377.0'</u>	Commenced <u>AUGUST 12, 1983</u>	Dip: Collar <u>-60°</u>	Location Sketch North ↑ Claim No. <u>R 437120</u> Scale: 1" = 1000' 1000'
Property <u>RAYLOND RES. WISSELE CR.</u>	Bearing <u>A2. 180°</u>	Completed <u>AUGUST 11, 1983</u>	Etch Test Depth Rdg. True	
Township <u>McCUBBIN TWP.</u>	Dip <u>-60°</u>	Drilling Co. <u>Smalley Bros. Ltd</u>		
Location <u>North Qid 2+50W,</u>	Objective	Core Size <u>50</u>		
<u>10+50N</u>		Casing Left in Hole		
Remarks				

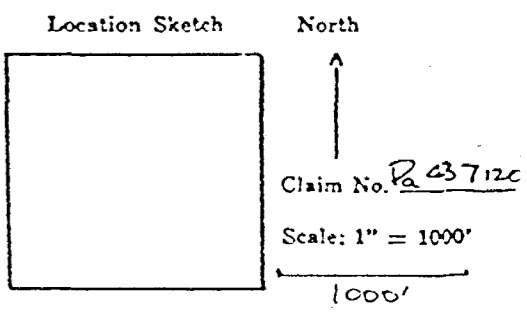
Footage		DESCRIPTION	Sample No.	From	To	Length	Au oz./ton	Ag oz./ton				
From	To											
0.0	10.0	CASING.										
10.0	159.0	MAFIC VOLCANICS: GREEN, FINE GRAINED, WITH SOME CHLORITIC SECTIONS, BANDING POORLY DEVELOPED AT ABOUT 20° TO CORE AXIS (CAL. MINOR QUARTZ VEINETS). 91.5-92.5 CHLORITIC SEAM WITH QUARTZ AND PYRITE. AT 140.0' ROCK BECOMES MORE CHLORITIC (TUFFACEOUS?) WITH BANDING AT 30° TO C.A.										
159.0	161.5	CHERT, BROWN IN COLOR, MASSIVE.										
161.5	259.5	CHLORITIC TUFF AND IRON FORMATION. IRON FORMATION OF MODERATE DEVELOPMENT. CREMULATIONS BUT AV. BANDING AT 30° TO C.A. MINOR OT. VEINING. 169.0-170.0 PINK QUARTZ VEIN, LOW PYRITE. FROM 178.0 IRON FORMATION BANDS FINEST. FROM 220.0 ROCK BECOMES MORE CHLORITIC, IF BANDS SPARSE. ROCK IS CARBONATED WITH INCREASED QUARTZ-CARBONATE VEINING BANDING AT 30° TO C.A.	5840	169.0	170.2	1.2	0.006	0.02				
259.5	290.0	QUARTZ-CARBONATE ZONE, SAME ROCK TYPE AS ABOVE, BUT STRONGLY VEINED, CHLORITIC AND CARBONATED. BANDING VARIABLE IN ATTITUDE, BUT COMMONLY ABOUT 75° TO C.A.	5841	288.5	289.5	1.0	0.008	0.06				
			5842	259.5	261.0	1.5	0.049	0.02				
			5843	262.5	263.0	0.5	0.052	0.05				
		259.5-265.0 STRONGLY VEINED AND SPECIATED AREA QZ-CARB. WITH VARIABLE PYRITE AND ARSENOPYRITE.	5844	263.0	264.0	1.0	0.30	0.09				
			5845	264.0	265.0	1.0	0.034	0.06				
290.0	353.0	CHLORITIC TUFF AND IRON FORMATION. IRON FORMATION BANDS SPARSE. ROCK IS WELL CARBONATED WITH OCCASIONAL SPECIATED AND VEINED ZONES WITH SOME PYRITE. 319.0-321.0 QUARTZ-CARBONATE ZONE, SPECIATED AND VEINED WITH PYRITE AND ASPY. 322.0-324.0 CORE MISSING. FROM 331.0 IRON FORMATION MORE STRONGLY DEVELOPED. ROCK IS CARBONATED AND CREMULATIONS COMMON. BANDING IS NORMALLY AT ABOUT 60° TO C.A.	8711	319.0	321.0	2.0	0.083	0.04				
353.0	357.5	CHERT, BROWN TO GRAY, MASSIVE.										
357.5	377.0	GRAYWACKE, SILICEOUS VARIABLY CHLORITIC ROCK WITH INDISTINCT BANDING AT ABOUT 60° TO CORE AXIS.										
377.0		END OF HOLE.										

DUPLICATE COPY
POOR QUALITY ORIGINAL
TO FOLLOW

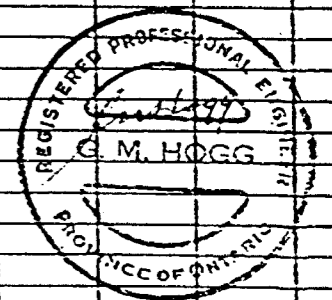


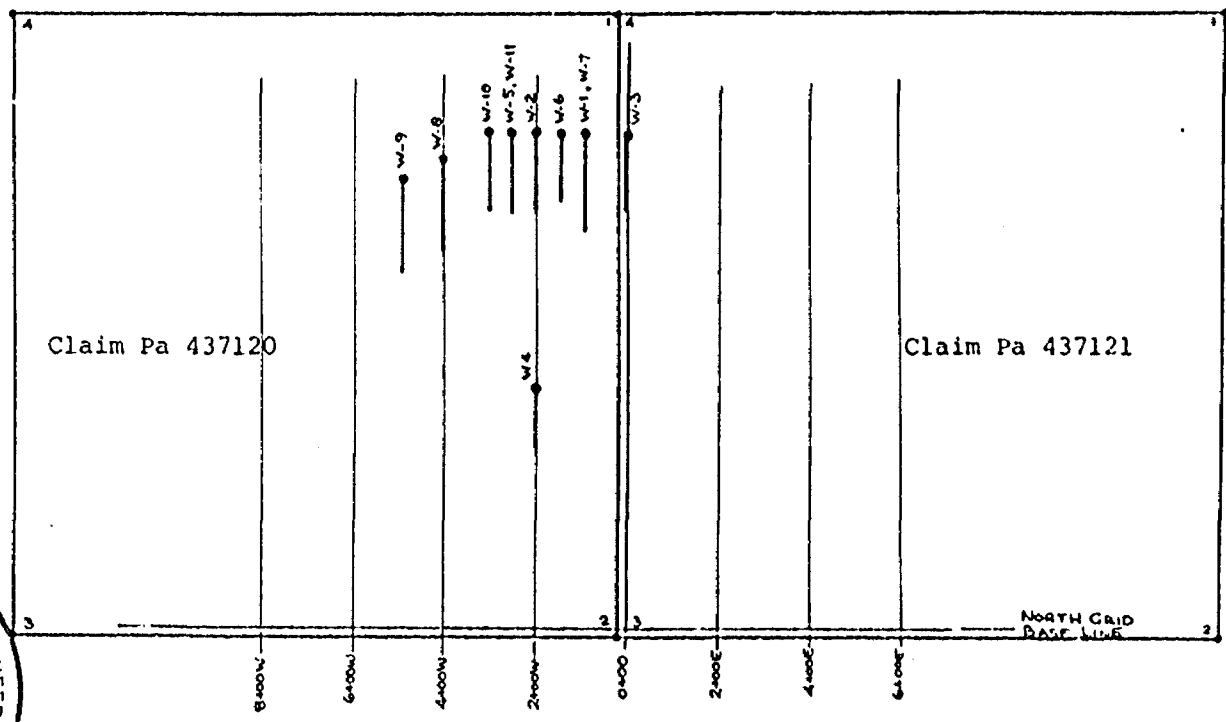
DIAMOND DRILL RECORD

Hole No. W-11

Hole No. <u>W-11</u> Sheet <u>1</u>	Length <u>377.0'</u>	Commenced <u>AUGUST 8, 1983</u>	Dip: Collar <u>-60°</u>	Location Sketch North 
Property <u>RAYMOND RES. WIGGLE CR.</u>	Bearing <u>Az. 180°</u>	Completed <u>AUGUST 11, 1983</u>	Etch Test Depth Rdg. True	
Township <u>McGUBBIN TWP.</u>	Dip <u>-60°</u>	Drilling Co. <u>Smalley Bros. Ltd.</u>		
Location <u>North Quid 2+SDW, 10+SDN</u>	Objective _____	Core Size <u>BQ</u>		
Remarks _____			Casing Left in Hole _____	

Footage		DESCRIPTION	Sample No.	From	To	Length	Au oz./ton	Ag oz./ton			
From	To										
0.0	10.0'	CASING.									
10.0'	159.0'	MAFIC VOLCANICS; GREEN, FINE GRAINED WITH SOME CHLORITIC SECTIONS, BANDING POORLY DEVELOPED AT ABOUT 20° TO CORE AXIS (CAL) MINOR QUARTZ VEINETS. 91.5-92.5 CHLORITIC SEAM WITH QUARTZ AND PYRITE. AT 140.0' ROCK BECOMES MORE CHLORITIC (TUFFACEOUS?) WITH BANDING AT 30° TO C.A.									
159.0'	161.5'	CHERT, BROWN IN COLOR, MASSIVE.									
161.5'	259.5'	CHLORITIC TUFF AND IRON FORMATION (IRON FORMATION) OF MODERATE DEVELOPMENT. CEMENTATIONS, BUT AV. BANDING AT 30° TO C.A. MINOR QTZ VEINING. 169.0-170.0 PINK QUARTZ VEIN, LOW PYRITE. FROM 178.0 IRON FORMATION BANDS FINEST. FROM 220.0 ROCK BECOMES MORE CHLORITIC, IF BANDS SPARSE. ROCK IS CARBONATED WITH INCREASED QUARTZ-CARBONATE VEINING BANDING AT 30° TO C.A.	5840	169.0'	170.2'	1.2'	0.006	0.02			
259.5'	290.0'	QUARTZ-CARBONATE ZONE SAME ROCK TYPE AS ABOVE, BUT STRONGLY VEINED, CHLORITIC AND CARBONATED BANDING VARIABLE IN ATTITUDE, BUT COMMONLY ABOUT 75° TO C.A. 259.5-265.0 STRONGLY VEINED AND PRECIPITATED AREA QTZ-CARB WITH VARIABLE PYRITE AND ARSENOPYRITE.	5841 5842 5843 5844 5845	258.5' 259.5' 262.5' 263.0' 264.0'	259.5' 261.0' 263.0' 264.0' 265.0'	1.0' 1.5' 0.5' 1.0' 1.0'	0.008 0.049 0.052 0.30 0.034	0.06 0.02 0.05 0.09 0.06			
290.0'	357.0'	CHLORITIC TUFF AND IRON FORMATION (IRON FORMATION) BANDS SPARSE. ROCK IS WELL CARBONATED WITH OCCASIONAL PRECIPITATED AND VEINED ZONES WITH SOME PYRITE. 319.0-321.0 QUARTZ-CARBONATE ZONE, PRECIPITATED AND VEINED WITH PYRITE AND ASPY. 322.0-324.0 CORE MISSING. FROM 331.0' IRON FORMATION MORE STRONGLY DEVELOPED. ROCK IS CARBONATED AND CEMENTATIONS COMMON. BANDING IS NORMALLY AT ABOUT 60° TO C.A.	8711	319.0'	321.0'	2.0'	0.083	0.04			
353.0'	357.5'	CHERT, BROWN TO GRAY, MASSIVE.									
357.5'	377.0'	GRAYWACKE, SILICEOUS VARIABLY CHLORITIC ROCK WITH INDISTINCT BANDING AT ABOUT 60° TO CORE AXIS.									
377.0'		END OF HOLE.									





G. M. HOGG ASSOCIATES LTD

Raylloyd Resources Ltd.
DRILL HOLE LOCATION PLAN, NORTH GRID
AREA OF THE WIGGLE CREEK PROPERTY,
McCUBBIN TOWNSHIP, ONTARIO

Scale: 1 inch = 400 ft.

400'

GMH Nov. 1983.

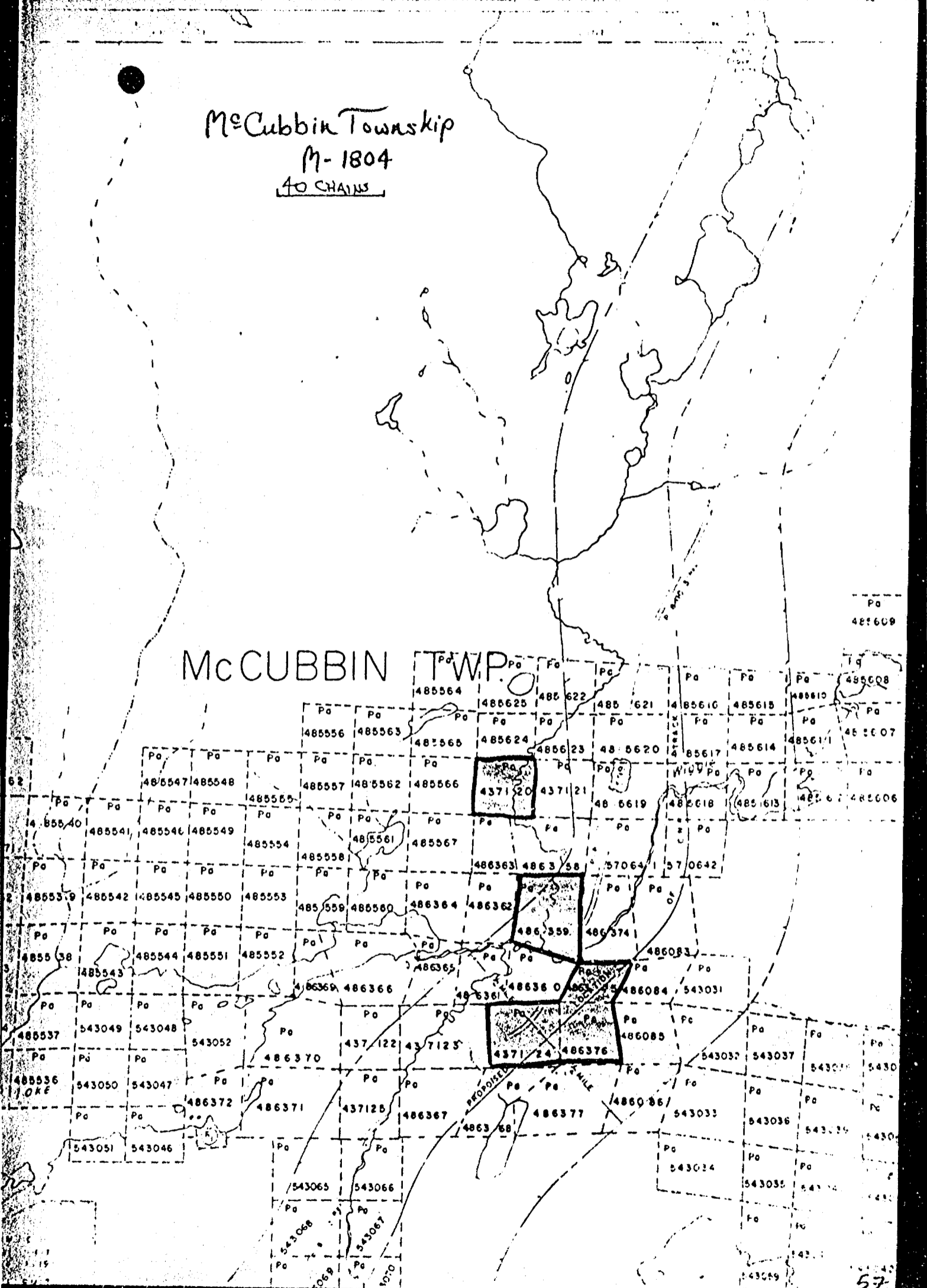


52J07NE0013 52J07NE0011 GREBE LAKE

900

McCubbin Township
M-1804
40 CHAINS

McCUBBIN TWP



Pa
486609

Pa
486608

Pa
486607

Pa
486606

Pa
486605

Pa
486604

Pa
486603

Pa
486602

Pa
486601

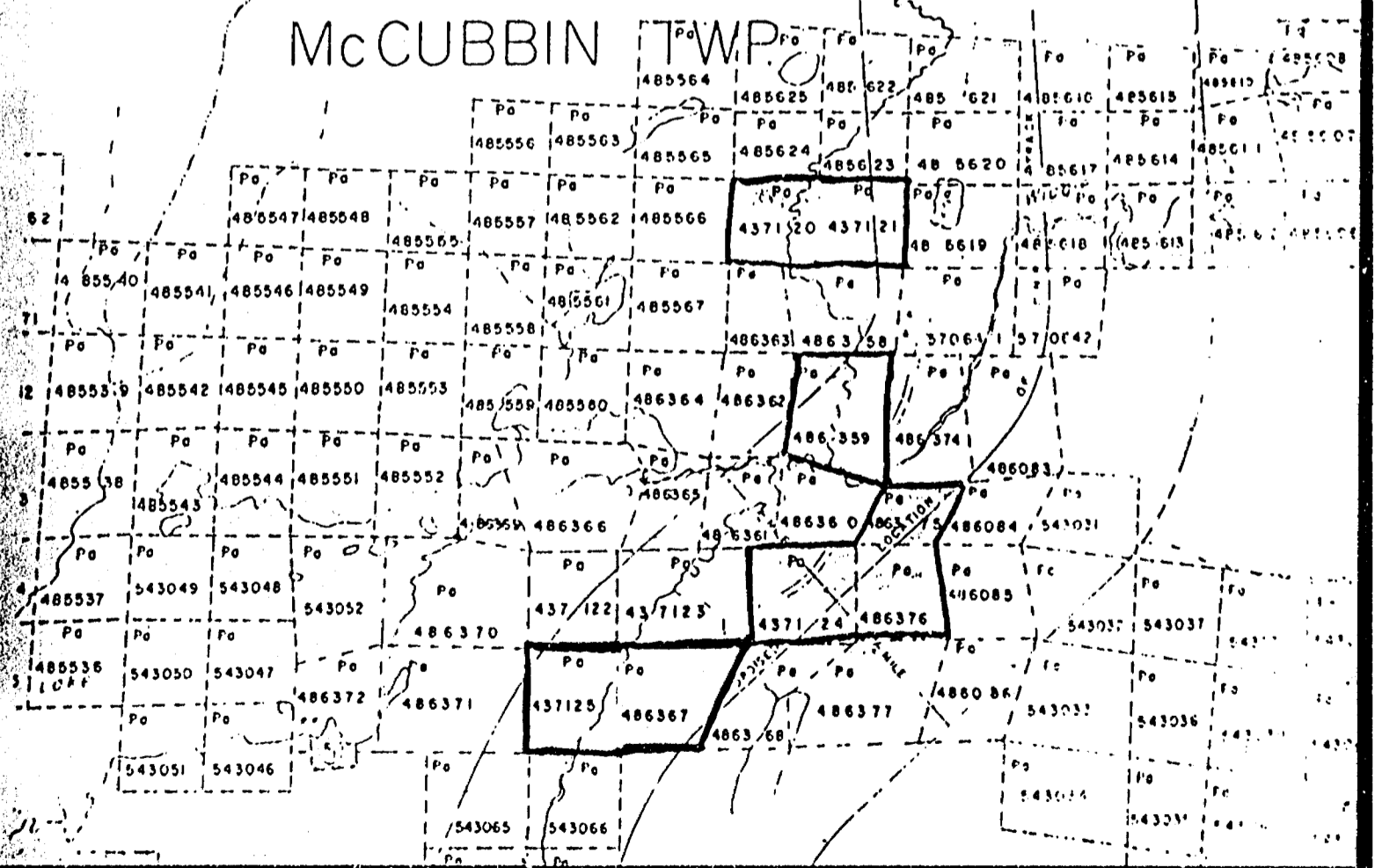
Pa
486600

Pa
486599

57

McCubbin Township
M-1804
40 CHAINS

McCUBBIN TWP.





52J/7 NE (51) McCubbin Twp. M-1804 Poisson Twp. M-1865

Ministry of Natural Resources
Report of Work

#84-56

Instructions - Supply required data on a separate form for each type of work to be recorded (see table below)
- For Geo-technical work use form no. 1362 "Report of Work (Geological, Geophysical, Geochemical and Expenditures)".

Assess. Lib. GREBE LK The Mining Act

Name and Postal Address of Recorded Holder: RAYMOND RESOURCES LTD + RAM PETROLEUMS LTD AND RAYMOND & RAMSAY
Prospector's Licence No. A18000-771-T409

10 COOK ST. BARRIE ONT L4A 4E9

Summary of Work Performance and Distribution of Credits

Total Work Days Cr. claimed	Mining Claim			Work Days Cr.	Mining Claim			Work Days Cr.	Mining Claim			Work Days Cr.
	Prefix	Number			Prefix	Number			Prefix	Number		
5695												
(for Performance of the following work. (Check one only)) <input type="checkbox"/> Manual Work <input type="checkbox"/> Shaft Sinking Drifting or other Lateral Work. <input type="checkbox"/> Compressed Air, other Power driven or mechanical equip. <input type="checkbox"/> Power Stripping <input checked="" type="checkbox"/> Diamond or other Core drilling <input type="checkbox"/> Land Survey												
SEE SCHEDULE A.												

All the work was performed on Mining Claim(s): PA. 437120 - 486359 - 486376 - 437124 - 486325 - 437121 - 486367 - 437125

Required Information eg: type of equipment, Names, Addresses, etc. (See Table Below)

DRILL OWNER BRADLEY BROS ROUYN 24EBEC
Days Performed 5695
Using 3480
2215 Balance for future use
DRILLING DATES MAY - JUNE - JULY - AUG 1983

DRILL HOLE NO.	FOOTAGE	DRILL HOLE NO.	FOOTAGE
J6-1	425'	W 7	350'
L7-1	456'	W 8	437'
L7-2	274'	W 9	343'
K9-1	400'	W 10	282'
K7-1	400'	W 11	377'
W 1	400'		
W 2	320'		
W 3	250'		
W 4	256'		
W 5	250'		
W 6	250'		

ONTARIO GEOLOGICAL SURVEY
ASSESSMENT FILES
RESEARCH OFFICE
APR 25 1984
RECEIVED

Recorded
Bradley Bros

Pa. 486014

Date of Report: March 30/84
Recorded Holder or Agent (Signature): R.S. Ramsay

Certification Verifying Report of Work

I hereby certify that I have a personal and intimate knowledge of the facts set forth in the Report of Work annexed hereto, having performed the work or witnessed same during and/or after its completion and the annexed report is true.

Name and Postal Address of Person Certifying: RAYMOND G. RAMSAY 10 COOK ST BARRIE ONT

Date Certified: March 30/84
Certified by (Signature): R.S. Ramsay

Table of Information/Attachments Required by the Mining Recorder

Type of Work	Specific Information per type	Other Information (Common to 2 or more types)	Attachments
Manual Work	NII	Names and addresses of manual work/operated equipment, together with dates and hours of employment.	Work Sketch: these are required to show the location and extent of work in relation to the nearest claim post.
Shaft Sinking, Drifting or other Lateral Work	NII		
Compressed air, other power driven or mechanical equip.	Type of equipment	Names and addresses of equipment together with dates when drilling/stripping done.	Work Sketch (as above) in duplicate
Power Stripping	Type of equipment and amount expended. Note: Proof of actual cost must be submitted within 30 days of recording.		
Diamond or other core drilling	Signed core log showing; footage, diameter of core, number and angles of holes.		
Land Survey	Name and address of Ontario land surveyor.	NII	NII

PATRICIA MINING DIV.
RECEIVED
MAR 30 1984
7:18, 9:10, 11:12, 1:18, 4:15 P.M.

SCHEDULE A

CLAIM NO.	WORK DAYS CR.	CLAIM NO.	WORK DAYS CR.
R. 486014	80		
486015	80		
486016	80		
486017	80		
486018	80		
486019	80		
486077	80		
486078	80		
486079	80		
486080	80		
486081	80		
486082	80		
A 543031	120		
543032	120		
543033	120		
543034	120		
543035	120		
543036	120		
543037	120		
543038	120		
543039	120		
543040	120		
543041	120		
543042	120		
543043	120		
543044	120		
543045	120		
A 543053	120		
543054	120		
543056	120		
543057	120		
543058	120		
543059	120		

PATRICIA MINING DIV.

RECEIVED

MAR 30 1984

A.M. P.M.

7 8 9 10 11 12 1 2 3 4 5 6