

ALGOMA ORE DIVISION
THE ALGOMA STEEL CORPORATION, LIMITED

EXPLORATION DEPARTMENT

121/7

63-215/



52J07NE0048 52J07NE0044 GREBE LAKE

010

PERSH LAND GOLD CLAIMS (KASHA WEOGAMA)

PATRICIA MINING DIVISION

GEO PHYSICAL WORK

TO ACCOMPANY REPORT TO ONTARIO DEPARTMENT OF MINES

June 7, 1967

J. E. Gray,
Geological Technician.

ALGOMA ORE DIVISION
THE ALGOMA STEEL CORPORATION, LIMITED

EXPLORATION DEPARTMENT

GEOPHYSICAL REPORT

Location

The property consists of 21 unpatented contiguous claims approximately 16 miles north of Savant Lake Station (main stop of C.N.R. main line).

The claims are accessible by ground transportation (truck and swamp buggies) and bush aircraft.

Two lakes located on the north-west and south-east corners of the property are accommodating to bush planes.

Kashaweogama Lake to the north-west is the more suitable lake of the two.

To reach the property by means of ground transporting is to drive 16 miles north of Savant Lake Station on Highway 599 (Pickle Lake Road); at the 16 mile mark a bush road goes to the left. A distance of 4 miles on this road brings you to the east claim boundary of the above claims.

The following claim numbers make up the 21 claim group:

PA 38268, PA 38269, PA 38270, PA 38271, PA 38272, PA 38273, PA 38274, PA 38275,
PA 38276, PA 38277, PA 38278, PA 38279, PA 38280, PA 38281, PA 38282, PA 38283,
PA 38284, PA 38285, PA 38287, PA 38304, PA 38303

Claim Status

The claims are owned by the Pershland Gold Mines Ltd. of Scarborough Ontario and were optioned by The Algoma Steel Corporation, Ltd. April, 1967.

Reason for Survey

The Geophysical survey was conducted on the Pershland Gold Claims for two reasons.

- (i) To outline a magnetic anomaly on the ground previously outlined by an airborne magnetic survey
- (ii) Confirm anomalous widths previously outlined by a ground magnetic survey done by Sharpe Instruments of Canada.

Cont'd.....

Results of Surveys

Two anomalous areas were outlined.

Zone (A) Average width 800 feet
Approximate length 16,800 feet

Zone (B) Approximate length 3,800 feet
Average width 600 feet

The average magnetic intensity of the above anomalous area is 70,000 gammas.

Type of Instrument

The instrument used was a McPhar M-700 Fluxgate Magnetometer. The sensitivity of the instrument is 20 gammas per scale division on the 1k range.

Instrument Operator

Ivan Dea,
Timmins, Ont.

His qualifications are:

Instrument operator with Noranda Mines for the past four years.

Method of Survey

A line grid was laid out as shown on the accompanying plan. This grid totaled 27.5 miles of line. Break-down is as follows:

- (i) 27,400 ft. of surveyed base lines
- (ii) 4,500 ft. of surveyed tie lines
- (iii) 113,250 ft. of cross sectional lines

The cross sectional lines were cut at 200 ft. intervals except where detailed lines were required and these lines were cut at 100 foot intervals.

All of the above lines were turned off at 90 degrees off of the survey base lines. Chainage pickets were established at 100' intervals along cross sectional lines. Magnetometer readings were taken at 25' intervals. 4,730 magnetometer readings were recorded.

Break-down of Work

(a) Line Cutting

<u>Personnel</u>	<u>Dates</u>	<u>Man Days</u>	<u>Credit Days</u>
E. Rendell c/o Algoma Ore Div. 503 Queen Street East, Sault Ste. Marie, Ont.	May 10 - 20/67	11	11

Cont'd.....

Break-down of Work

(a) Line Cutting Cont'd.....

<u>Personnel</u>	<u>Dates</u>	<u>Man Days</u>	<u>Credit Days</u>
N. Tarasuk c/o Algoma Ore Div., 503 Queen Street East, Sault Ste. Marie, Ont.	Apr. 7 - 10/67	4	4
S. Bowes Little Current, Ont.	Apr. 16 - 20/67	5	5
M. L'Heureux c/o Algoma Ore Div., 503 Queen Street East, Sault Ste. Marie, Ont.	Apr. 13 - May 11/67	28	28
O. Mousseau, 336 Maretta Street, Sault Ste. Marie, Ont.	Apr. 12 - 21/67	11	11
G. Helm, c/o Algoma Ore Div., 503 Queen Street East, Sault Ste. Marie, Ont.	Apr. 7 - 12/67	7	7
W. Danio Nakina, Ont.	Apr. 16 - May 14/67	28	28
M. Pekkonen, c/o Algoma Ore Div., 503 Queen Street East, Sault Ste. Marie, Ont.	Apr. 16 - 23/67 May 9 - 20/67	8 12	8 12
D. Pollock c/o Algoma Ore Div., 503 Queen Street East, Sault Ste. Marie, Ont.	Apr. 16 - May 14/67	29	29
P. Palola c/o Algoma Ore Div., 503 Queen Street East, Sault Ste. Marie, Ont.	Apr. 17 - May 20/67	34	34
		—	—
	Total	177	177

(b) Engineer and Supervision

A. M. Paradis 336 Maretta Street Sault Ste. Marie, Ont.	Apr. 12 - 15/67	4	28
*R. J. Mousseau Michipicoten Harbour, Ont.	Apr. 16 - May 3/67	18	126

* Transit work

Cont'd.....

(b) Engineer and Supervision (Cont'd.....)

<u>Personnel</u>	<u>Dates</u>	<u>Man Days</u>	<u>Credit Days</u>
E. O. Hillman Hearst, Ont.	Apr. 13 - May 20/67	38	266
		—	—
	Total	60	420

(c) Magnetometer Work

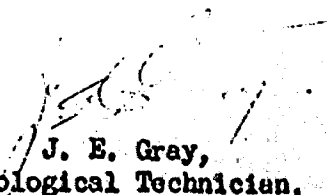
I. Dea Timmins, Ont.	May 5 - 16/67	12	84
		—	—
	Total	12	84

(d) Draughting

I. Dea Timmins, Ont.	May 17 - 20/67	4	28
A. Michael 38 Douglas Street Sault Ste. Marie, Ont.	May 5 - 30/67	25	100
	Total	29	128
		—	—
	Combined Totals	278	809

I certify the above information is true and correct.

June 7, 1967


 J. E. Gray,
 Geological Technician,
 Exploration Department,
 Algoma Ore Division.

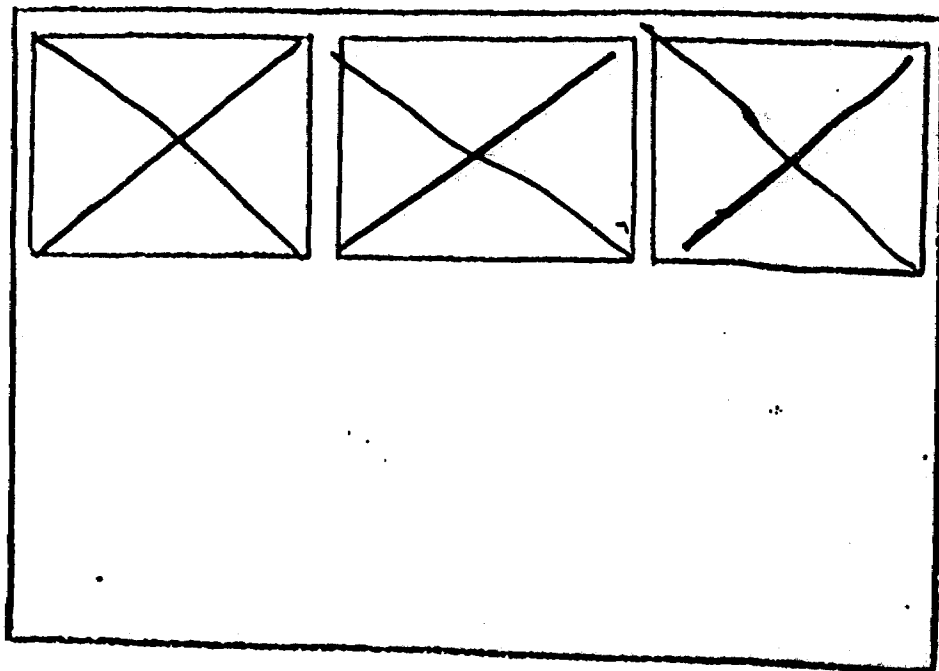
ONLY 13 CLAIMS SUFFICIENTLY TRAVERSED TO WARRANT ASSESSMENT CREDITS.

THIS REPORT BREAKDOWN IS WELL PADDED HOWEVER LET GO BUT DO NOT ALLOW CREDITS FOR 8 POORLY COVERED CLAIMS

SEE ACCOMPANYING
MAP(S) IDENTIFIED AS

52J/07NE-0044 # 1-3

LOCATED IN THE MAP
CHANNEL IN THE FOLLOWING
SEQUENCE (X)



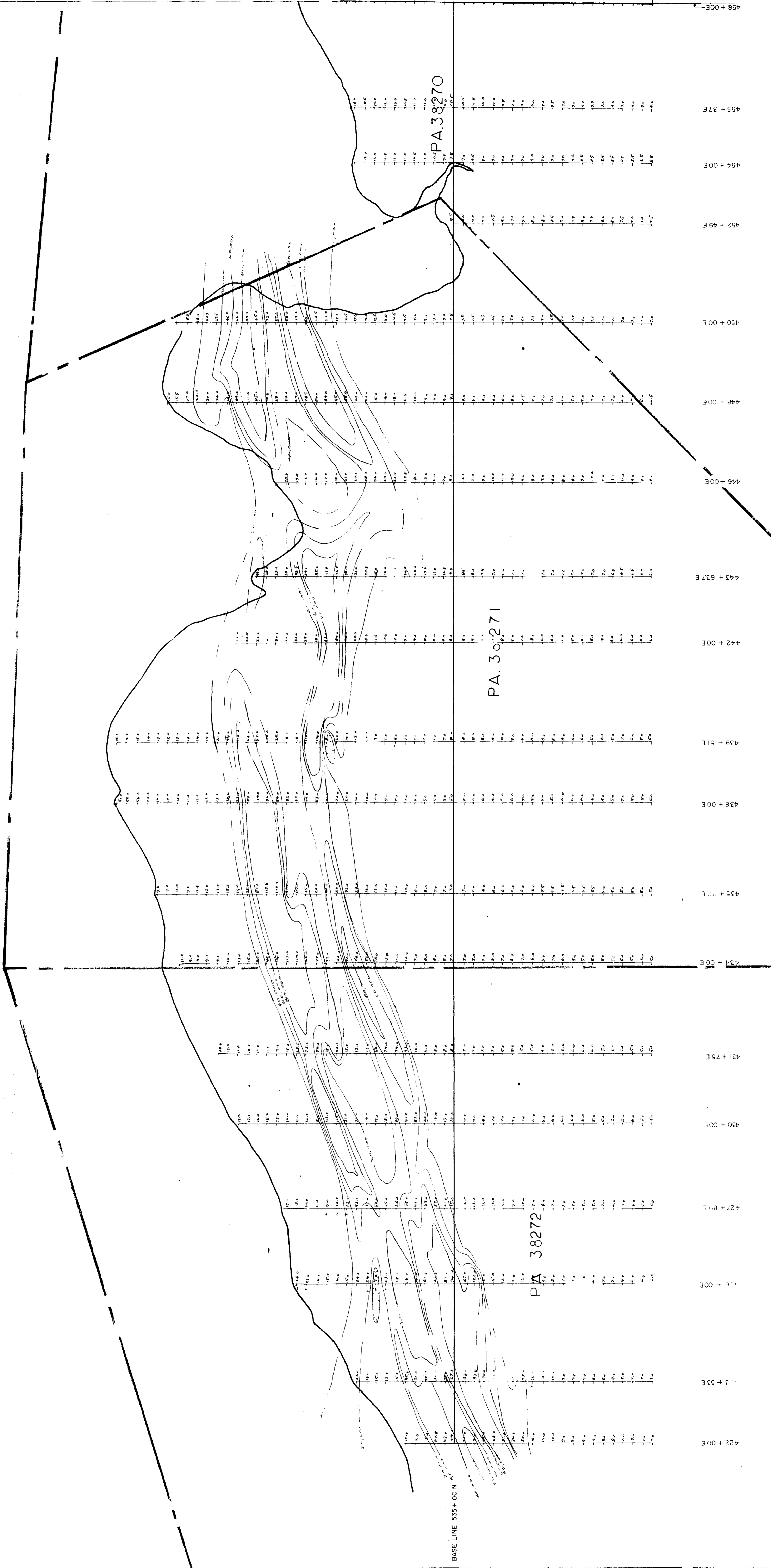
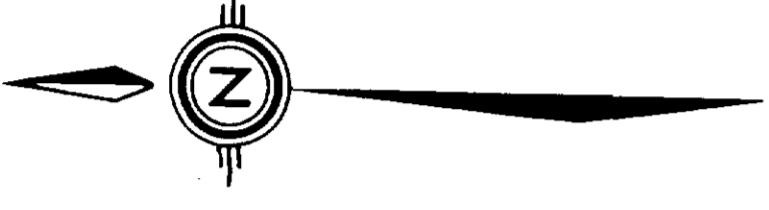
FOR ADDITIONAL
INFORMATION

SEE MAPS:

52J/07NE-0044 # 4-7

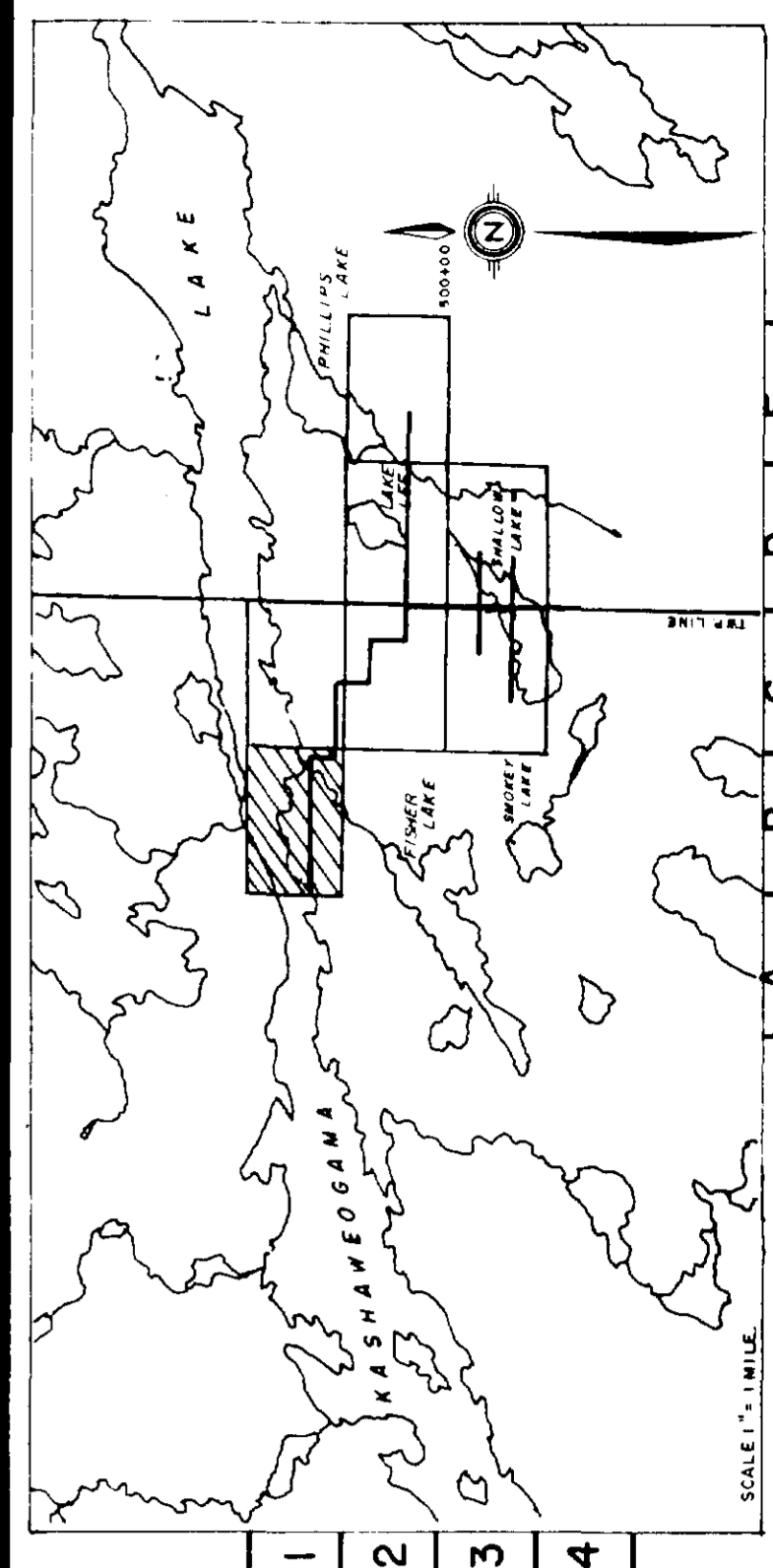
KASHAWEOGAMA

LAKE



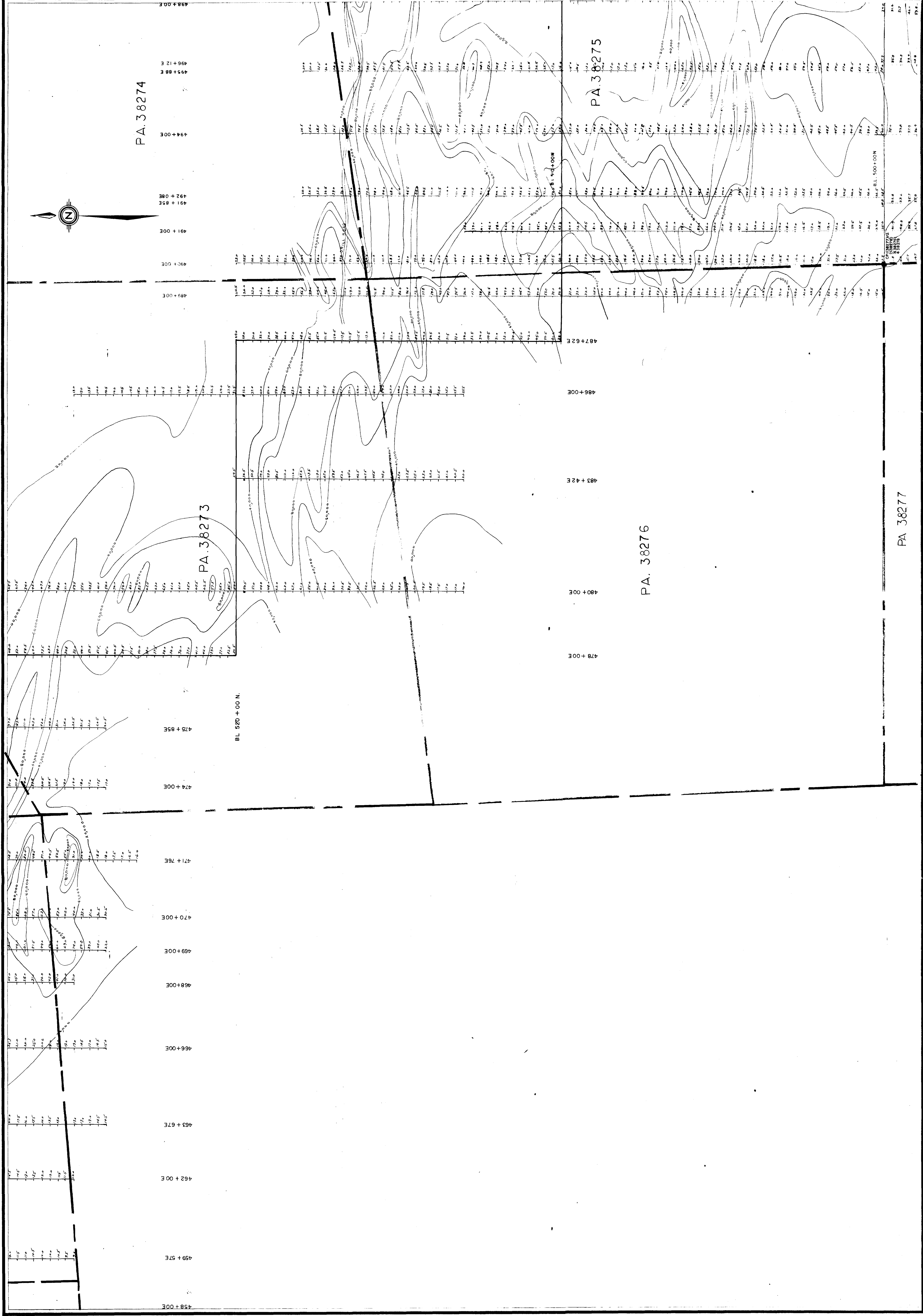
52J/07NE-0044, #1

THE ALGOMA STEEL CORPORATION, LIMITED
ALGOMA ORE DIVISION
EXPLORATION DEPARTMENT
KASHAWEOGAMA LAKE IRON FORMATION
PERSHLAND GOLD MINES LTD.



Handwritten signature
SHEET 1-B

GEOLOGICAL LEGEND		MAGNETOMETER SURVEY	
YELLOW	1 ACID TO INTERMEDIATE VOLCANICS	READINGS IN GAMMAS	
BLUE	2 SEDIMENTS	0 000 TO 10 000	
ORANGE	3 IRON FORMATION	10 000 TO 20 000	
GREEN	4 BASIC TO INTERMEDIATE VOLCANICS	20 000 TO 40 000	YELLOW
BLUE	5 METASEDIMENTS	40 000 TO 60 000	ORANGE
PURPLE	6 BASIC TO INTERMEDIATE	60 000 TO 80 000	RED
PURPLE	7 ACID INTRUSIVES	80 000 OR OVER	PURPLE
		IN PHAR M-700 FLUORITE MAG	



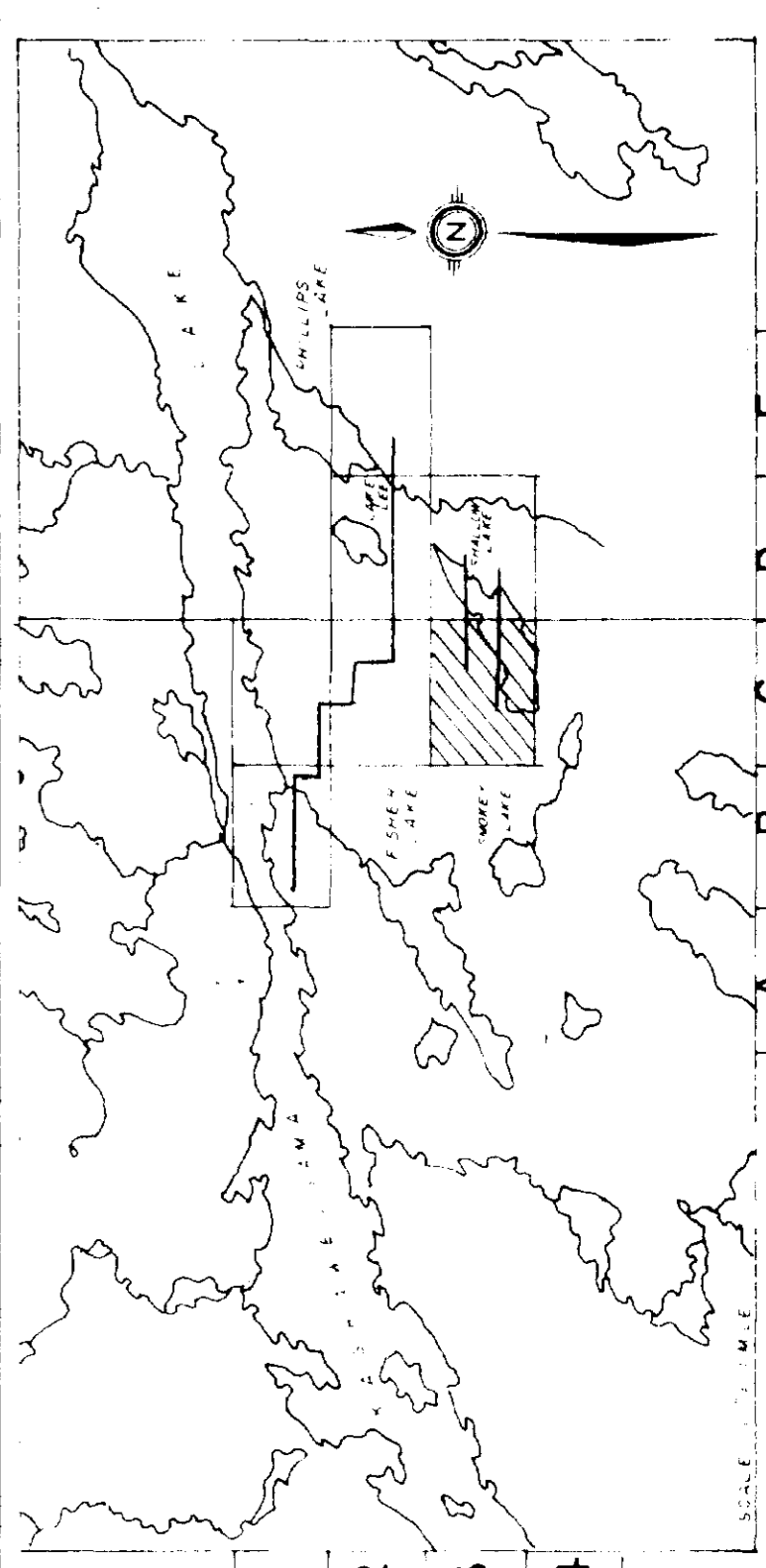
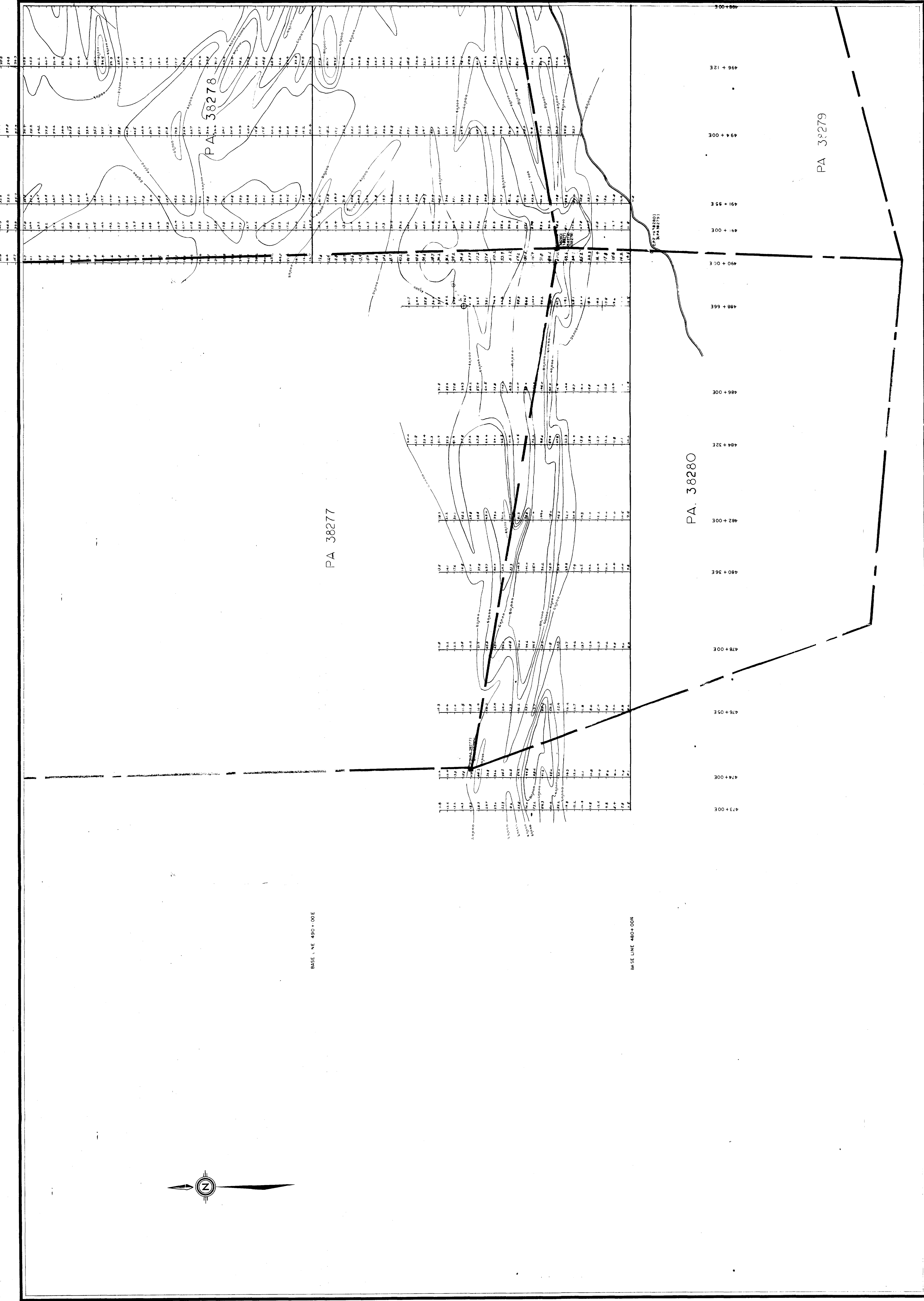
52J/07NE-0044 #3

THE ALGOMA STEEL CORPORATION LIMITED
 ALGOMA ORE DIVISION
 EXPLORATION DEPARTMENT
 KASHAWEOGAMA LAKE IRON FORMATION
 PERSHLAND GOLD MINES LTD
 MAGNETOMETER SURVEY

Handwritten signature
 August Johnson

MAGNETOMETER SURVEY
 1. DATE: 1964
 2. LOCATION: KASHAWEOGAMA LAKE
 3. PROJECT: ALGOMA ORE DIVISION
 4. SCALE: 1:50,000
 5. INSTRUMENT: GOM-10
 6. OPERATOR: AUGUST JOHNSON
 7. ASSISTANT: []
 8. CHECKER: []
 9. APPROVED: []
 10. DATE: 1/14/64





Handwritten signature: *Handwritten Signature*

473+00E
474+00E
476+05E
478+00E
480+36E
482+00E
484+32E
486+00E
488+66E
490+00E
491+35E
494+00E
496+12E
498+00E

PA 38277
PA 38278
PA 38279

BASE LINE 480+00E
BASE LINE 480+00E

PA. 38280

52J107NE-0044, #4

THE ALGOMA STEEL CORPORATION, LIMITED
ALGOMA ORE DIVISION
EXPLORATION DEPARTMENT

KASHAWEOGAMA LAKE IRON FORMATION
PERSHORE GOLD MINES LTD.
MAGNETOMETER SURVEY

SCALE 1" = 100 FT
MAY 1957

SHEET 3-C

230

GEOLOGICAL LEGEND	
[YELLOW]	1 ADD TO INTERMEDIATE VOLCANICS
[BLUE]	2 SEDIMENTS
[ORANGE]	3 IRON FORMATION
[GREEN]	4 BASIC TO INTERMEDIATE VOLCANICS
[D BLUE]	5 METASEDIMENTS
[PURPLE]	6 BASIC TO INTERMEDIATE
[RED]	7 GRANITOIDAL GNEISS
[MAGNETOMETER SURVEY]	MAGNETOMETER SURVEY

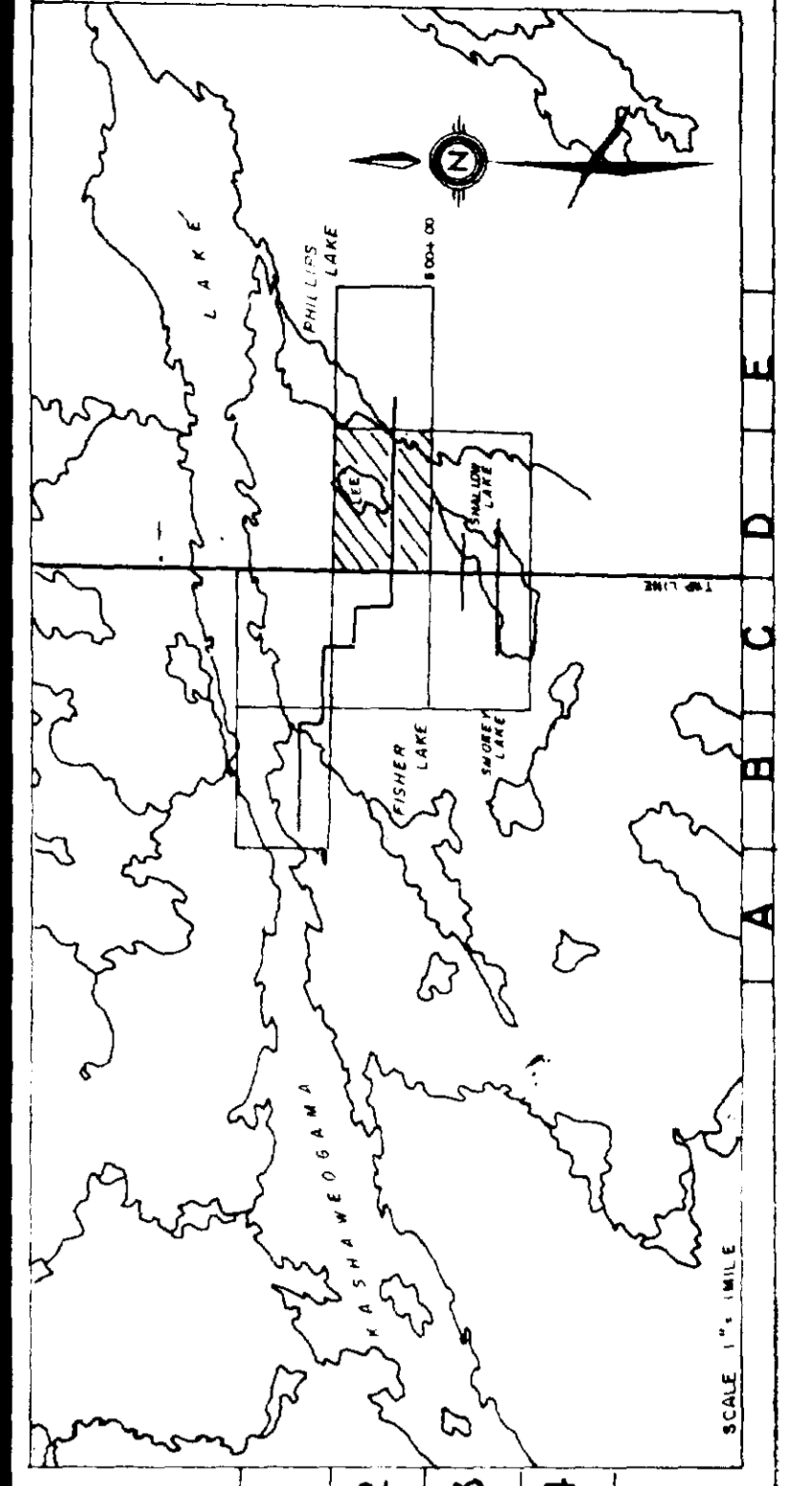
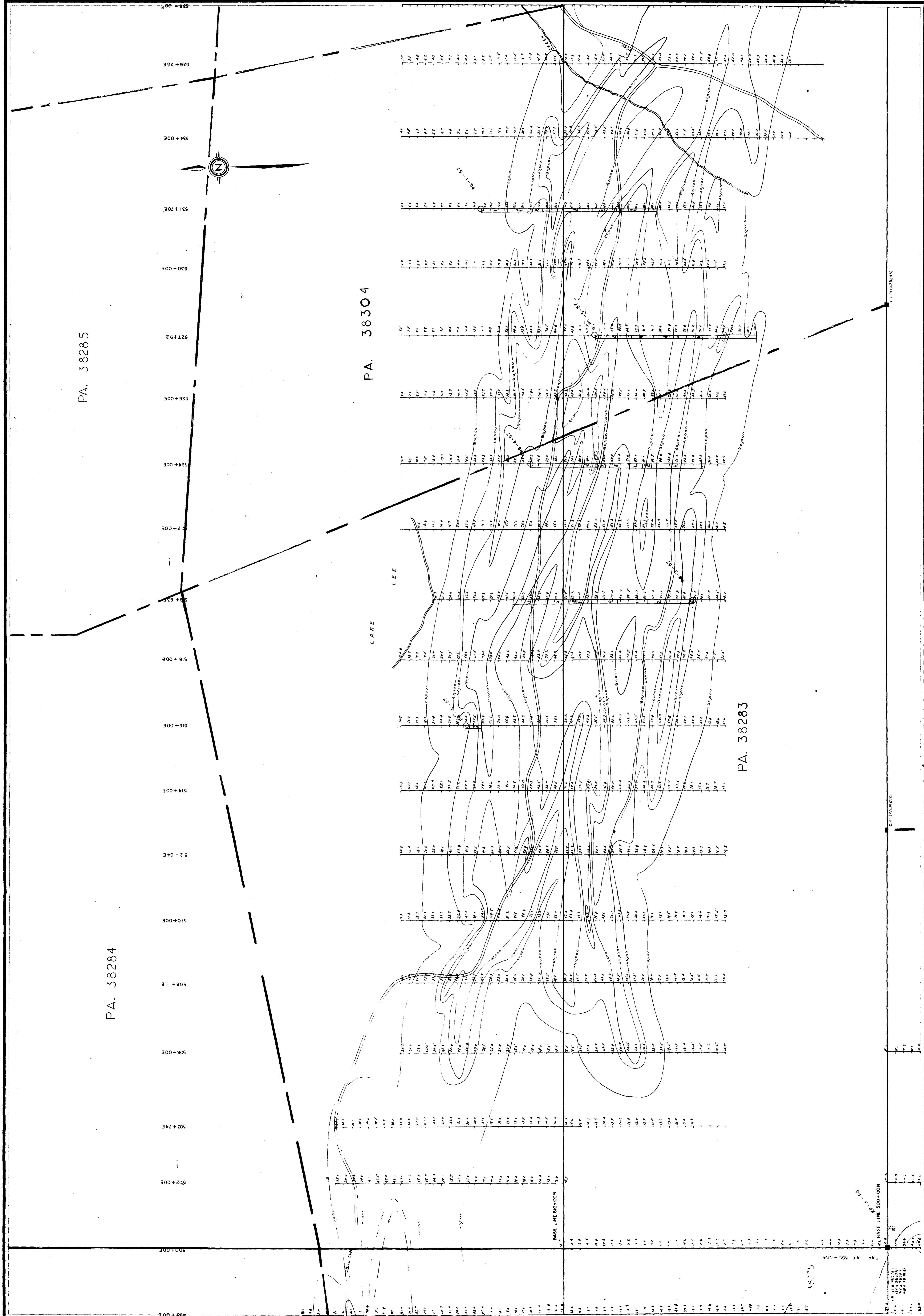
READINGS IN GAMMAS	
0 000 TO 10 000	[YELLOW]
10 000 TO 20 000	[ORANGE]
20 000 TO 40 000	[GREEN]
40 000 TO 60 000	[D BLUE]
60 000 TO 80 000	[PURPLE]
80 000 OR OVER	[RED]
MPHAR M-700 FLUXGATE MAG	

PA. 38285

PA. 38284

PA. 38304

PA. 38283



[Handwritten signatures]

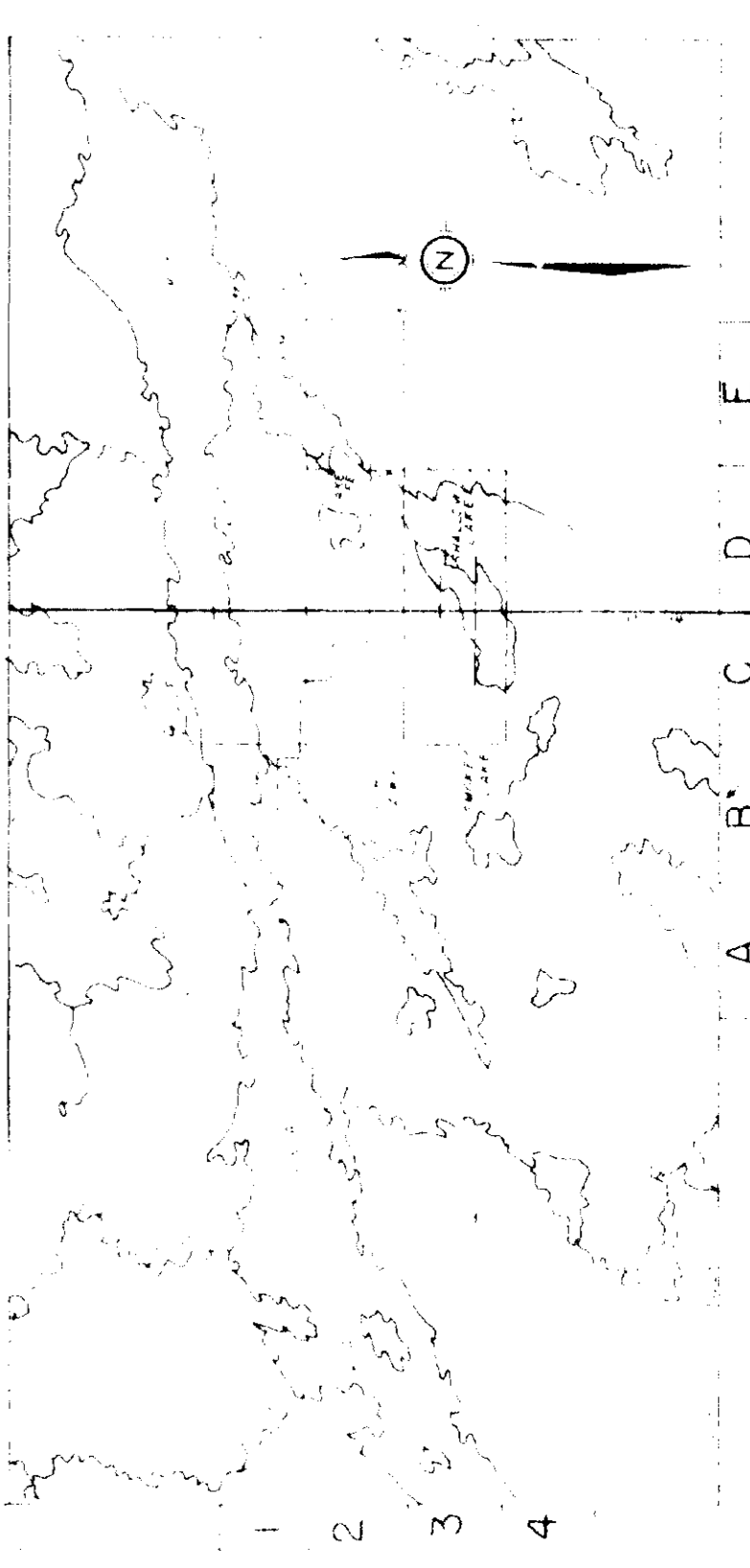
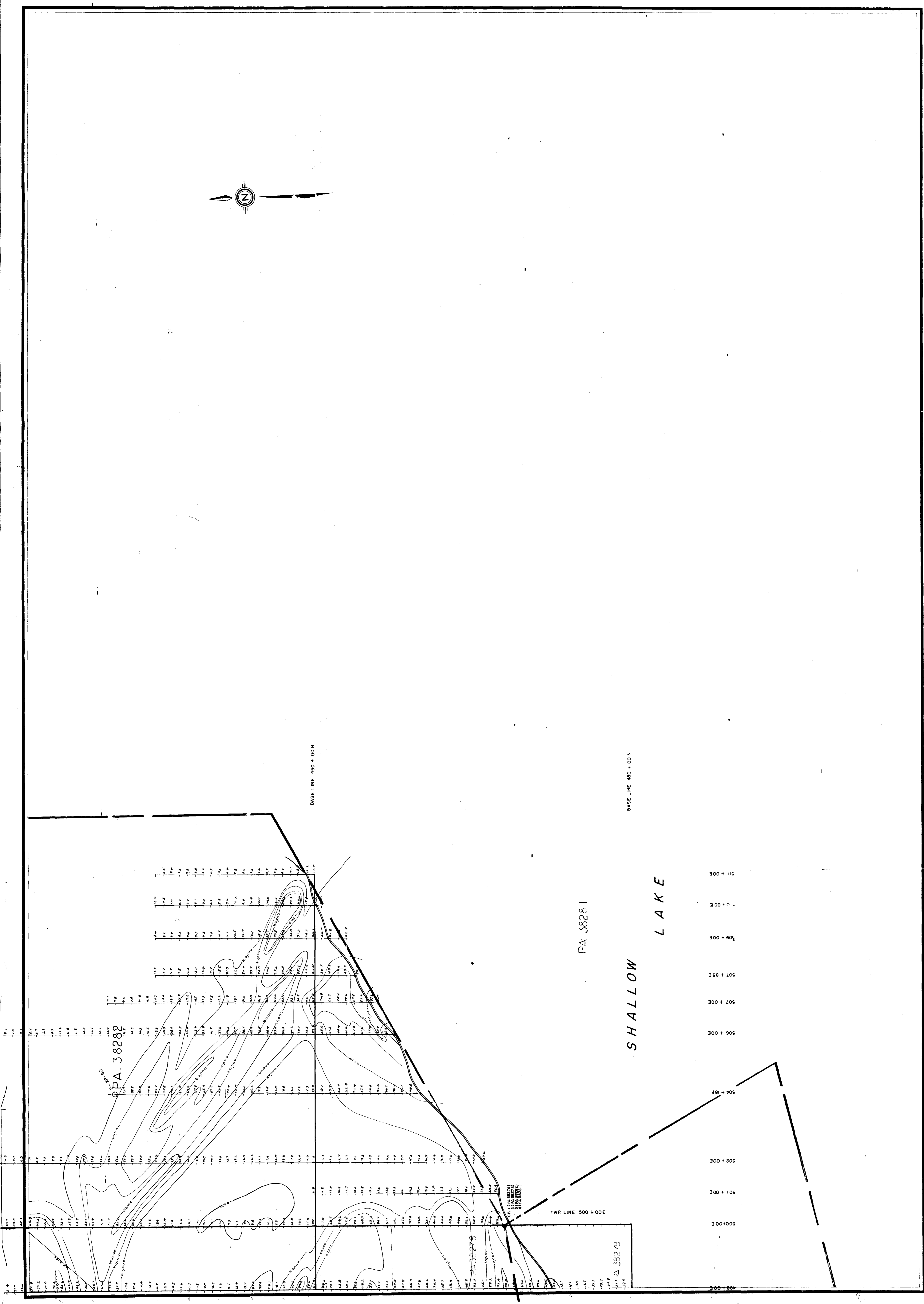
52J/07NE-0044, #5
 THE ALGOMA STEEL CORPORATION, LIMITED
 ALGOMA ORE DIVISION
 EXPLORATION DEPARTMENT
 KASHAWEOGAMA LAKE IRON FORMATION
 PERSHLAND GOLD MINES LTD.
 MAGNETOMETER SURVEY

MAGNETOMETER SURVEY
 READINGS IN GAMMAS
 0 000 TO 10 000
 10 000 TO 20 000
 20 000 TO 40 000
 40 000 TO 60 000
 60 000 TO 80 000
 80 000 OR OVER

MAGNETOMETER SURVEY
 READINGS IN GAMMAS
 0 000 TO 10 000
 10 000 TO 20 000
 20 000 TO 40 000
 40 000 TO 60 000
 60 000 TO 80 000
 80 000 OR OVER

GEOLOGICAL LEGEND
 1. BLUE 1. INTERMEDIATE VOLCANICS
 2. GREEN 2. IRON FORMATION
 3. PURPLE 3. METASEDIMENT
 4. RED 4. BASIC TO INTERMEDIATE
 5. YELLOW 5. METASEDIMENT
 6. ORANGE 6. BASIC TO INTERMEDIATE
 7. PURPLE 7. METASEDIMENT
 8. RED 8. BASIC TO INTERMEDIATE
 9. YELLOW 9. METASEDIMENT
 10. ORANGE 10. BASIC TO INTERMEDIATE

SCALE 1" = 100 FT.
 MAY 1967
 MAG. BY J.P.M.



52J/07 NE-0044, #6
 THE ALGOMA STEEL CORPORATION, LIMITED
 ALGOMA ORE DIVISION
 EXPLORATION DEPARTMENT
 KASHAWEOGAMA LAKE IRON FORMATION
 PERSHLAND GOLD MINES LTD.
 MAGNETOMETER SURVEY

MAGNETOMETER SURVEY

GEOLOGICAL LEGEND

YELLOW	1. AND TO INTERMEDIATE VOLCANICS
BLUE	2. SEEDMENTS
ORANGE	3. IRON FORMATION
GREEN	4. BASIC TO INTERMEDIATE VOLCANICS
WHITE	5. METASEDIMENTARY
PURPLE	6. BASIC TO INTERMEDIATE
SP. N.	7. UNIDENTIFIED

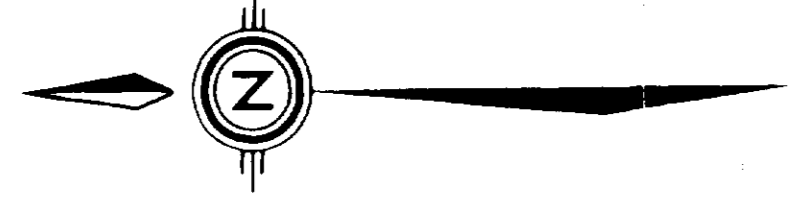
READINGS IN GAMMAS

0.000 TO 1.000	1
10.000 TO 20.000	2
20.000 TO 30.000	3
40.000 TO 50.000	4
60.000 TO 80.000	5
80.000 OR OVER	6

MPHAR M-700 FLUX GATE W/G

250

MAP BY: ZHWA-8



PA. 36857

540+00E
542+00E
544+00E
546+00E
547+95E
550+00E

PA. 38303

BASE LINE 510+00 N

PA 38304

OF AREA SHOWN

52J/07NE-0044, #7

THE ALGOMA NIPYU CORPORATION
ALGOMA ORE DIVISION
EXPLORATION DEPARTMENT
KASHAWEOGAMA LAKE IRON FORMATION
MAGNETOMETER SURVEY

