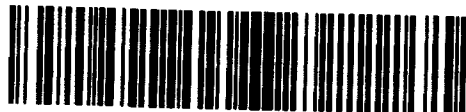


ALGOMA ORE DIVISION  
THE ALGOMA STEEL CORPORATION, LIMITED  
EXPLORATION DEPARTMENT



52J07NW9141 63.2151 POISSON

010

63-2151

SNOW BIRD LAKE CLAIMS (SAVANT LAKE AREA)

PATRICIA MINING DIVISION

GEOPHYSICAL WORK

TO ACCOMPANY REPORT TO ONTARIO DEPARTMENT OF MINES

MAY 17, 1967

ALGOMA ORE DIVISION  
THE ALGOMA STEEL CORPORATION, LIMITED

EXPLORATION DEPARTMENT

GEOPHYSICAL REPORT

Location and Access

The property consists of 11 unpatented contiguous claims approximately 25 miles north-west of Savant Lake Station, a stop on the C.N.R. main line. (20) (only) (20) (EAST)

The claims are accessible by bush aircraft and are approximately 2½ miles west of Savant Lake.

Small lakes within the claim group are of bush plane size.

The claims are <sup>LOCATED</sup> located in the Patricia Mining Division.

The following claims make up the group:

PA 36866 PA 36863 PA 36861 PA 38176 PA 38177 PA 38172  
PA 36869, PA 36866, PA 36863, PA 36861, PA 38176, PA 38177, PA 38172,  
PA 38173, PA 36858, PA 38174, PA 38175  
PA 38173, PA 36858, PA 38174, PA 38175

Claim Status

ALGOMA STEEL CORP., LTD.

The claims are owned by The Algoma Steel Corp., Ltd. and were staked in June, 1966.

Reason for Survey

To outline a magnetic anomaly previously outlined by an airborne magnetic survey.

Results of Survey

Two anomalous areas of approximately 6,000 feet and 150 feet average width were outlined.

Type of Instrument

The instrument used was a McPhar M-500 Fluxgate Magnetometer. The sensitivity of the instrument is 20 gammas per scale division on the 1 k range.

Instrument operators (a) J. E. Gray  
39 Pageant Drive  
Sault Ste. Marie, Ont.

His qualifications are:

- (i) Technician with McPhar Geophysics Ltd. for 3 years.
- (ii) Ten year Field Technician with Algoma Ore Division.

Cont'd.....

Instrument operators Cont'd.....

(b) N. Tarasuk  
c/o Algoma Ore Division  
503 Queen Street East  
Sault Ste. Marie, Ont.

His qualifications are:

(1) Instrument operator with Algoma Ore Division for the past 4 years

Method of Survey

A line grid was laid out as shown on the accompanying plan. This grid totalled 9.5 miles. Cross sectional lines were cut at 400 feet intervals except where intermediate lines were cut and these were at 200' spacings.

The previous mentioned cross sectional lines were turned off at 90° angles off of a picketed base line.

Chainage pickets were established at 100' intervals along cross sectional lines.

Magnetometer readings were taken at 25' intervals. A total of 1,799 readings were recorded.

Break-down of Work

(a) Line Cutting

<u>Personnel</u>	<u>Dates</u>	<u>Man Days</u>	<u>Credit Days</u>
T. A. Gustafson 140 Black Bay Crescent Port Arthur, Ont.	July 10 - 29/66	20	20
E. Rendell Algoma Ore Division 503 Queen Street East Sault Ste. Marie, Ont.	July 10 - 29/66	20	20
D. Pollock Algoma Ore Division 503 Queen Street East Sault Ste. Marie, Ont.	July 10 - 22/66	13	13
R. Linden Algoma Ore Division 503 Queen Street East Sault Ste. Marie, Ont.	July 10 - 22/66	13	13

Cont'd.....

Break-down of Work Cont'd.....

(a) Line Cutting Cont'd.....

<u>Personnel</u>	<u>Dates</u>	<u>Man Days</u>	<u>Credit Days</u>
M. L'Herueux Algoma Ore Division 503 Queen Street East Sault Ste. Marie, Ont.	July 10 - 28/66 Jan. 21/67-Feb. 3/67	19 14	19 14
M. Pekkanen Algoma Ore Division 503 Queen Street East Sault Ste. Marie, Ont.	Jan. 21/67-Feb. 3/67	19	19
	Sub-Total	118	118

(b) Engineering and Supervision

R. J. Mousseau Michipicoten Harbour Ontario	July 20 - 29/66	10	70
V. R. Venn 251 Pim Street Sault Ste. Marie, Ont.	July 15, 16/66	2	14
	Sub-Total	12	84

(c) Magnetometer Work

J. E. Gray 39 Pageant Drive Sault Ste. Marie Ont.	Jan. 14-17/67	4	28
Nick Tarasuk Algoma Ore Division Sault Ste. Marie, Ont.	Mar. 30 - April 3/67	5	35
	Sub-Total	9	63

(d) Draughting

J. E. Gray 39 Pageant Drive Sault Ste. Marie, Ont.	Jan. 18 - 19/67	2	14
N. O. Bourgeois Algoma Ore Division Sault Ste. Marie, Ont.	May 10, 11, 12/67	3	21

Cont'd.....

(d) Draughting Cont'd.....

<u>Personnel</u>	<u>Dates</u>	<u>Man Days</u>	<u>Credit Days</u>
A. Michael 328 Douglas Street Sault Ste. Marie, Ont.	May 15, 16, 17/67	3	21
		—	—
	Sub-Total	8	56
		—	—
	Total	<u>147</u>	<u>321</u>

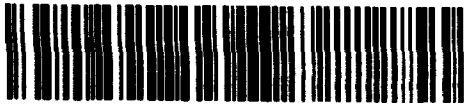
I certify that the information contained in this report is true and correct.

May 17, 1967

*J. E. Gray*  
 J. E. Gray,  
 Geological Technician,  
 Algoma Ore Division,  
 Exploration Department.

$\frac{316}{10} = 31.6$

PA 38172 NOT SUFFICIENTLY COVERED



52J07NW9141 63.2151 POISSON

020

ALGOMA ORE DIVISION  
THE ALGOMA STEEL CORPORATION, LIMITED

GEOLOGICAL REPORT  
STANDING BEAR LAKE ANOMALY CLAIMS (SAVANT LAKE AREA)  
POISSON TWP. SHEET M1805, PATRICIA MINING DIVISION

PURPOSE OF REPORT

Submitted for assessment work credits.

PROPERTY LOCATION AND ACCESS

Claims are located approximately one mile west of Savant Lake and 18 miles north of Savant Lake Station. Access by aircraft or portage from Savant Lake. A tourist camp road is presently being built from Highway 599 to The Narrows; progress thus far to Snowbird Lake vicinity.

PREVIOUS WORK

A magnetometer survey over a baseline length of 9,600' has been completed; crossline intervals at 200 - 400 feet. No other work has been done.

CLAIM STATUS

Claims are held by The Algoma Steel Corporation, Limited, Miner's Licence A20438. Staking was done in June, 1966. A total of 27.9 credit days per claim had been applied upon completion of geophysical surveying, dated May, 1967.

The Standing Bear claims come open on August 7, 1968. Present assessment applies for a total of 245 credit days on 6 claims.

CLAIMS MAPPED

PA38173 to PA38177 inclusive; PA36861. A total of 6 claims.

COVERING DATES

June 1, 1968 to June 17, 1968.

GEOLOGY

General geology of the Savant Lake area is described by E. S. Moore in his report entitled "Lake Savant Iron Range Area" O.D.M. 1910.

GEOLOGY CONT'D.

Present mapping at a scale of 1" = 200' has been completed over the magnetometer survey grid. Crossline interval varies between 200 to 400 feet. All outcrops visible from the baseline and crosslines have been noted.

Examination of outcropping indicates that altered greywacke and banded iron formation comprise the two main rock types in the grid area. Minor convoluted quartz veins also occur.

The greywacke is the country rock for the iron formation; with few exceptions iron formation bands make up no more than 15 - 20% of any particular outcrop. The greatest width of iron formation observed was about 20 feet at CL51+00E. Great widths of altered greywacke with minor iron formation bands and small quartz stringers were the most common outcroppings observed.

The greywacke is mainly of a massive appearance but occasionally exhibits a slaty cleavage which runs in a vein-type structure extending for several feet in a linear fashion.

The banded iron formation is composed of alternating layers of magnetite and quartz, usually fine-grained. Individual iron formation bands generally vary from laminae to one foot widths but most fall in the one inch to five inch range.

Iron formation bands have a high frequency of small dragfolds. Individual bands are usually highly discontinuous, bifurcate abruptly, and often have an elongated lens-shaped appearance. A near vertical dip remains uniform throughout the grid.

It is interesting to note that the glacially-scoured bedrock has bands of iron formation standing in relief and forming rounded crests in miniature roche moutonnée structures.

CONCLUSIONS

Iron formation bands comprise a minor (<10%) percent of the rock types present in the area covered by the ground magnetometer survey.

August 9, 1968.

*G.B. Thorsteinson*  
G. B. Thorsteinson,  
Geologist,  
Algoma Ore Division.

ALGOMA ORE DIVISION  
THE ALGOMA STEEL CORPORATION, LIMITED

EXPLORATION DEPARTMENT

STANDING BEAR LAKE ANOMALY (SAVWT LAKE AREA)

To Accompany Geological  
Report

Breakdown of Work:

A. GEOLOGICAL SURVEY

<u>Personnel</u>	<u>Date</u>	<u>Man Days</u>	<u>Credit Days</u>
G. B. Thorsteinson, Apt. 306, 603 MacDonald Avenue, Sault Ste. Marie, Ontario.	June 1-17, 1968	17	119
R. DeRosario, 503 Queen Street East, Sault Ste. Marie, Ontario	June 1-17, 1968	<u>17</u>	<u>119</u>
	Sub-Total	34	238

B. DRAUGHTING

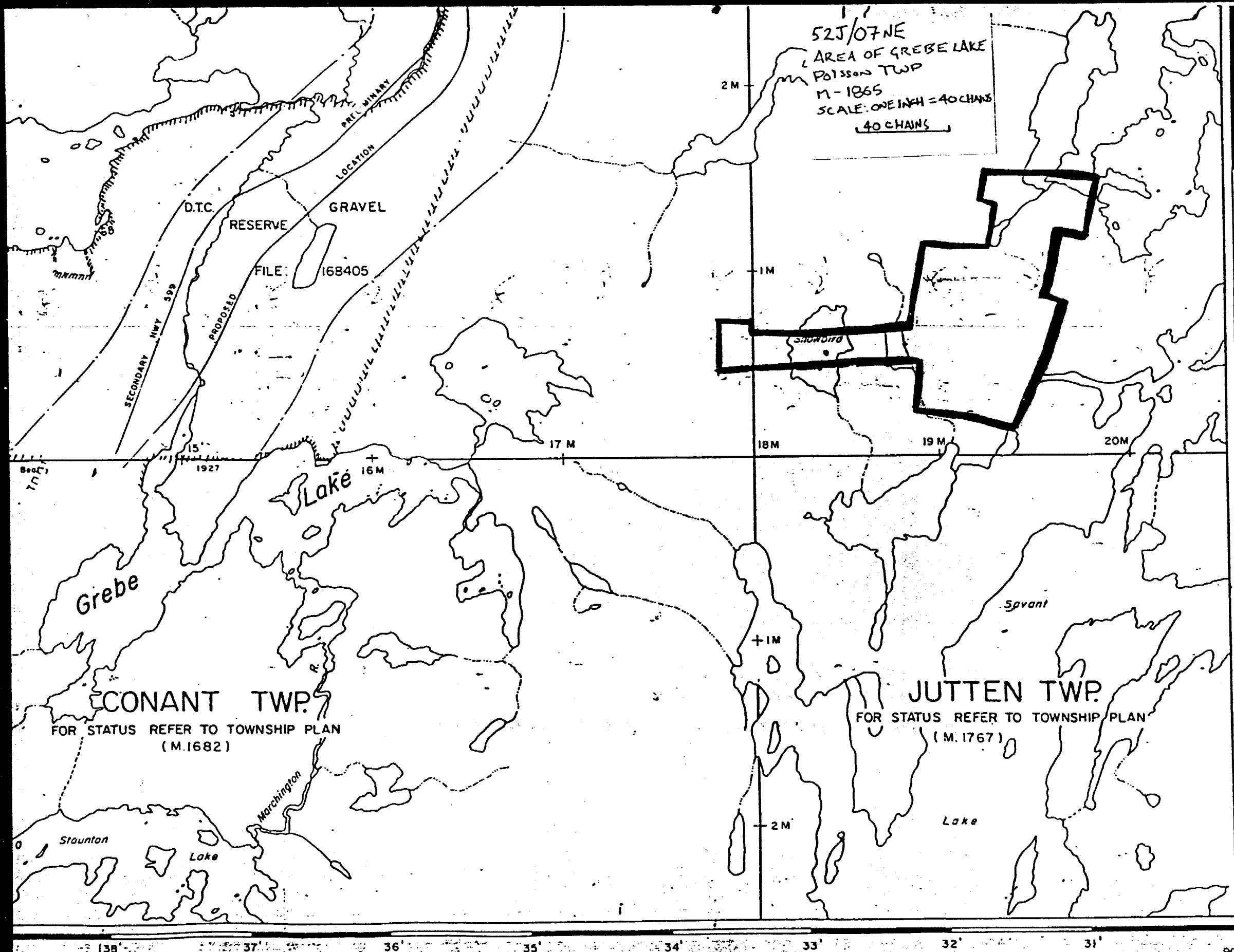
N. O. Bourgeois, Apt. 8, 606 McNabb Street, Sault Ste. Marie, Ontario.	July 9, 1968	1	7
	Sub-Total	<u>1</u>	<u>7</u>
	Combined Total	<u>35</u>	<u>245</u>

I certify the above information is true and correct.

Aug 7 1968  
Date

J. E. Gray  
Geological Technician  
Algoma Ore Division  
Sault Ste. Marie, Ontario





52J/07NE  
 AREA OF GREBE LAKE  
 POISSON TWP  
 N-1865  
 SCALE: ONE INCH = 40 CHAINS  
 40 CHAINS

400 Surface Right  
 All Lakes And Riv  
 1 Mile Wide C.N.R. Reserv  
 Under Sec. 42 Of The

CONANT TWP.  
 FOR STATUS REFER TO TOWNSHIP PLAN  
 (M.1682)

JUTTEN TWP.  
 FOR STATUS REFER TO TOWNSHIP PLAN  
 (M.1767)

Evans Lake - M.1774

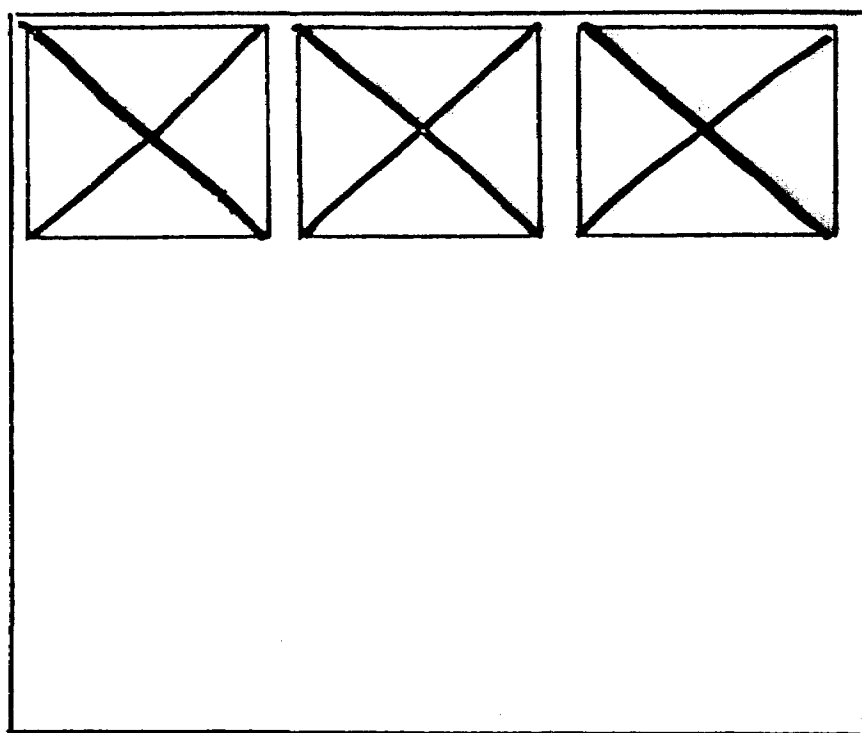
JUN 13 1972

52J/  
 NATIONAL TOPOG  
 PLAN NO. N  
 DEPARTM  
 AND NO

SEE ACCOMPANYING  
MAP(S) IDENTIFIED AS

52J/07NE-0045 #1-2

LOCATED IN THE MAP  
CHANNEL IN THE FOLLOWING  
SEQUENCE (x)

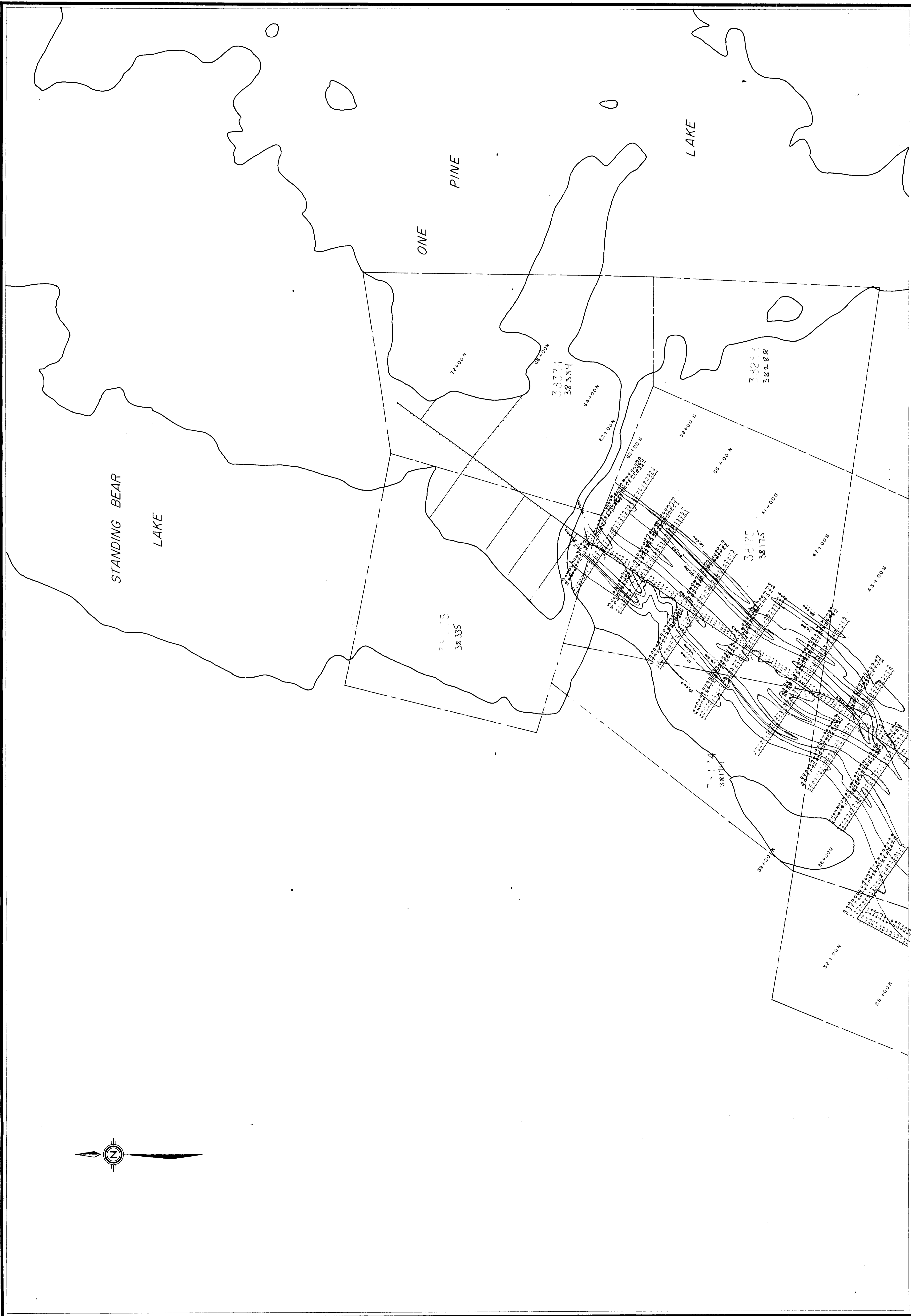


FOR ADDITIONAL  
INFORMATION

SEE MAPS:

52J/07NE-0045 #3





LEGEND IN GAMMAS  
 10 000 - 20 000  
 20 000 - 40 000  
 40 000 - 60 000  
 60 000 - 80 000  
 80 000 OR OVER  
 M - S CO MAGNETOMETER  
 MAG. BY N. TRASKIK

THE ALGOMA STEEL CORPORATION, LIMITED  
 ALGOMA ORE DIVISION  
 EXPLORATION DEPARTMENT  
 SAVANT LAKE  
 STANDING BEAR LAKE  
 ANOMALY

52J/07NE-0045, #3

