



52J07SE8787 63.978 EVANS LAKE

010

LUN-ECHO GOLD MINES LIMITED

GEOPHYSICAL SURVEY

SAVANT LAKE PROPERTY

George B. Darling

20 February, 1959

Handwritten signature

LUN-ECHO GOLD MINES LIMITED

Fort William, Ontario
February 20, 1959

The President and Directors
Lun-Echo Gold Mines Limited
1003-67 Yonge Street
TORONTO, Ontario

Gentlemen:

The following is a report on the magnetometer survey over four claims of your Savant Lake Property.

LOCATION AND ACCESS:

The property consists of 16 claims bearing the following numbers: PA 21383 to PA 21398 inclusive.

These are situated in the Patricia Mining Division of Ontario, about four miles north from Savant Lake Station on the C. N. R. The property is readily accessible by the Pickle Lake highway and a short bush road.

GEOLOGY:

The survey covers four claims: PA 21388, PA 21389, PA 21392 and PA 21393. These claims are overlain by light overburden, considerable swamp and a thick growth of spruce.

A small mineralized zone exists in the north-east corner of claim PA 21393 and has been investigated through deep overburden by a series of trenches. Mineralization consists of disseminated chalcopyrite,

J. H. C.

pyrite, sphalerite, galena and a little pyrrhotite.

Host rock appears to be a garnetiferous sedimentary gneiss which is more schisted and chloritic through the mineralized zone than elsewhere.

The strike of the bedding is about N 35-00E and the dip is generally vertical. Mineralization exists for a length of 200' and a maximum width of 40'. The trenches on strike beyond this length failed to show mineralization. Heavy overburden and swamps prevent further investigation by trenching. For this reason, a geophysical survey was recommended.

GEOPHYSICAL SURVEY

1. Magnetometer Survey:

Instrument: Radar Exploration Co., Toronto, Ontario
Magnetometer No. 59, scale constant 11-6

Stations: Readings were taken at 969 stations.

Lines: Lines were cut on spacings of 200' and readings taken every 50' thereon. Readings were taken at intervals of 25' on several lines. A total of 8.25 miles of line was cut.

LHM

Results: Several small anomalies were located. The showing is only weakly magnetic and could not be satisfactorily traced.

2. Electromagnetic Survey:

Electromagnetic readings were taken at 100' intervals on the crosslines. A Sharpe SE 100 vertical coil transmitter with RE 2 receiver was used. Readings are shown on the accompanying map and no definite cross-over was obtained.

The same area was checked by Dr. Wolverton and Mr. Roy Martin of Noranda Mines, using their portable E.M. outfit, with similar results.

3. Labour: Line Cutters:

Stan Johnson, Savant Lake, March 10th-19th	10 days
Bill Read, Savant Lake, March 10th-19th	10 days

Instrument Operators:

Stan Johnson, Savant Lake, April 1st - 6th	6 days
George B. Darling, Fort William, April 2-5th	4 days

<u>Consultants:</u> George B. Darling, Fort William, June 2 - 11th (above includes 5 days field and 5 days office)	10 days
---	---------

Total 40 man days

Assessment credit equals 4 x 40 = 160 days

CHD

CONCLUSIONS:

1. Several small magnetic anomalies were located with a magnetometer.
2. Electro-magnetic work was negative.
3. Sulphides, if they exist, must be disseminated and *IN ZONES THAT*
ARE generally not very magnetic. OR CONDUCTIVE. *SM*

RECOMMENDATIONS:

1. Trenching to investigate anomalies should be attempted.
2. Failure of (1) to reach ledge would necessitate some limited diamond drilling.

Respectfully submitted,

LUN-ECHO GOLD MINES LIMITED

George B. Darling
George B. Darling, P. Eng.,
Mining Engineer

C. J. W.



52J07SE8787 63.978 EVANS LAKE

020

LUN-ECHO GOLD MINES, LIMITED
SAVANT LAKE PROPERTY

April 14-17, 1953

1. Showing discovered by Sam Johnston in July, 1952
2. Claims staked by:
and recorded on:
3. Claims transferred to Lun-Echo on:
4. Trenching carried on from mid Feb to mid April, 1953,
when X-ray drill moved into property.

SHOWING

1. Located extreme N.E. corner claim T.B. 45239
2. Consists of 2 parallel mineralized zones in biotite gneiss
3. Zones strike N30°E. Dip unknown, possibly vertical. Zones are about 15 feet apart, and each averages about 5 feet in horizontal width.
4. Mineralization consists of chalcopyrite, pyrrhotite, sphalerite, and galena replacing gneiss outward from short irregular fractures. Accompanied by development of hbe and locally chlorite.
5. Zone as a whole is non-magnetic, but is strongly magnetic in trench No. 6.
6. Zone is covered by residual overburden up to 6 feet in thickness. Here zone has been broken down to a rusty limonitic material carrying malachite, native copper and original garnets. The weathered material is locally chloritic due to breakdown of biotitic.

**DUPLICATE COPY
POOR QUALITY ORIGINAL
TO FOLLOW**

Lun-Echo Gold Mines, Limited
Savant Lake Property

April 17, 1953

1. Showings discovered by Sam Johnston in July, 1952.
2. Claims staked by [unclear] and recorded on [unclear]
3. Claims transferred to Lun-Echo on [unclear]
4. Trenching carried on from mid Feb to mid April, 1953, when X-ray drill moved into property.

Showings

1. Located extreme N.E. corner claim 7.B. 95239.
2. Consists of 2 parallel mineralized zones in biotite gneiss.
3. Zones strike N 30° E. Dip unknown, possibly vertical. Zones are about 15 feet apart, and each averages about 5 feet in horizontal width.
4. Mineralization consists of chalcopyrite, pyrrhotite, sphalerite, and galena replacing gneiss outward from short irregular fractures. Accompanied by development of hbc and locally chlorite.
5. Zone as a whole is non-magnetic, but is strongly magnetic in trench No. 6.
6. Zone is covered by residual cover breccias up to 6 feet in thickness. Here zone has been broken down to a rusty limonitic material carrying malachite, native copper, and occasional garnets. The weathered material is locally chloritic due to breakdown of biotite.

Ed [unclear]

Lun-Echo Gold Mines Limited

(NO PERSONAL LIABILITY)

R 1003-67 YONGE ST., TORONTO
PHONE AD. 8514

April 7, 1953.

Mr. E. G. Pye, Geologist,
Department of Mines,
Port Arthur, Ontario.



52J07SE8787 63.978 EVANS LAKE

900

Dear Mr. Pye:

We are doing some surface trenching on a copper-silver-zinc showing one mile west of the Savant Lake-Pickle Lake road. The turn-off is approximately four miles north of Savant station on the C. N. R.

Dr. Hurst suggested that I contact you with the object in view of having you visit the property. Most of the trenches are through fairly heavy overburden, so if convenient, it might be advisable to see the showing before the frost is out of the ground as no doubt the trenches will cave in after they thaw.

Five trenches in a length of 130 feet show mineralization over widths of four to nine feet; while on April 4th another trench partially completed indicates a known length of 200 feet, apparently open at one end. It is planned to do further work along the strike in both directions.

My brother, Carl, is in charge of the work with four men and a cook on the job. There is sleeping accommodations and plenty to eat (or should be) and I would like very much if you could pay us a visit.

Transportation is by army truck right to the showing if you wire William Read or my brother, Carl, a few days before you plan on arriving. There is also a hotel at Savant.

E. G. Pye

- 2 -

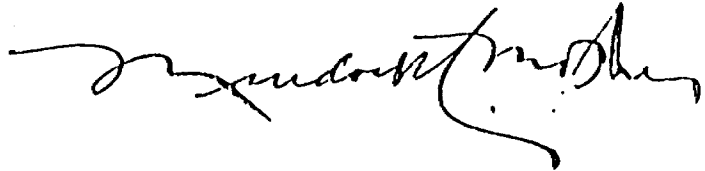
April 7, 1953.

I am sending a copy of this letter to my brother, Carl, and I would appreciate it very much if you would be good enough to pass on to him any ideas you might have after looking the situation over. The hope, of course, is that we will find other showings on the ground in addition to lengthening out the original one.

With best regards, I remain,

Yours very truly,

Murdock C. Mosher, President.

A handwritten signature in cursive script, appearing to read "Murdock C. Mosher". The signature is written in dark ink and is positioned below the typed name.

MCM/pb

cc - Mr. Carl Mosher,
Savant Lake,
Ontario.

April 8, 1953.

Mr. Carl Mosher,
Savant Lake,
Ontario.

Dear Sir:

I have received a letter from your brother,
Mr. M. C. Mosher, who has requested that I pay a visit
to you Savant Lake property.

If satisfactory to you, I will arrive on the
Westbound train at Savant Lake on Monday, April 20, in
order that you may pick me up at the hotel sometime
Tuesday morning.

I will bring a sleeping bag with me unless you
advise to the contrary.

If there is any chance of the trenches caving
before April 20, please wire me or telephone Port Arthur
5-8603 before April 13.

I am looking forward to meeting you.

Yours very truly,

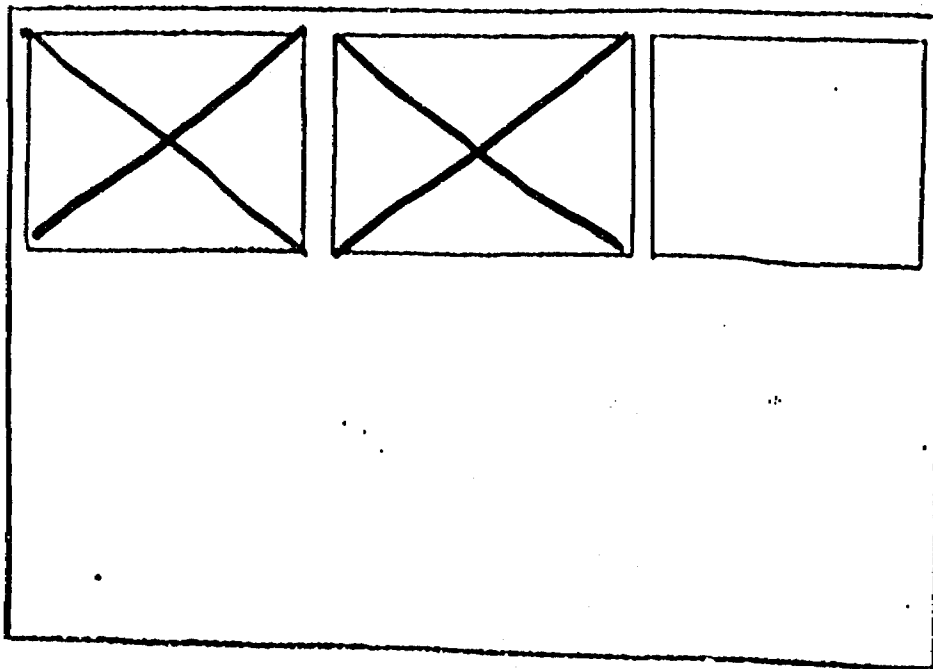
EGP/RV

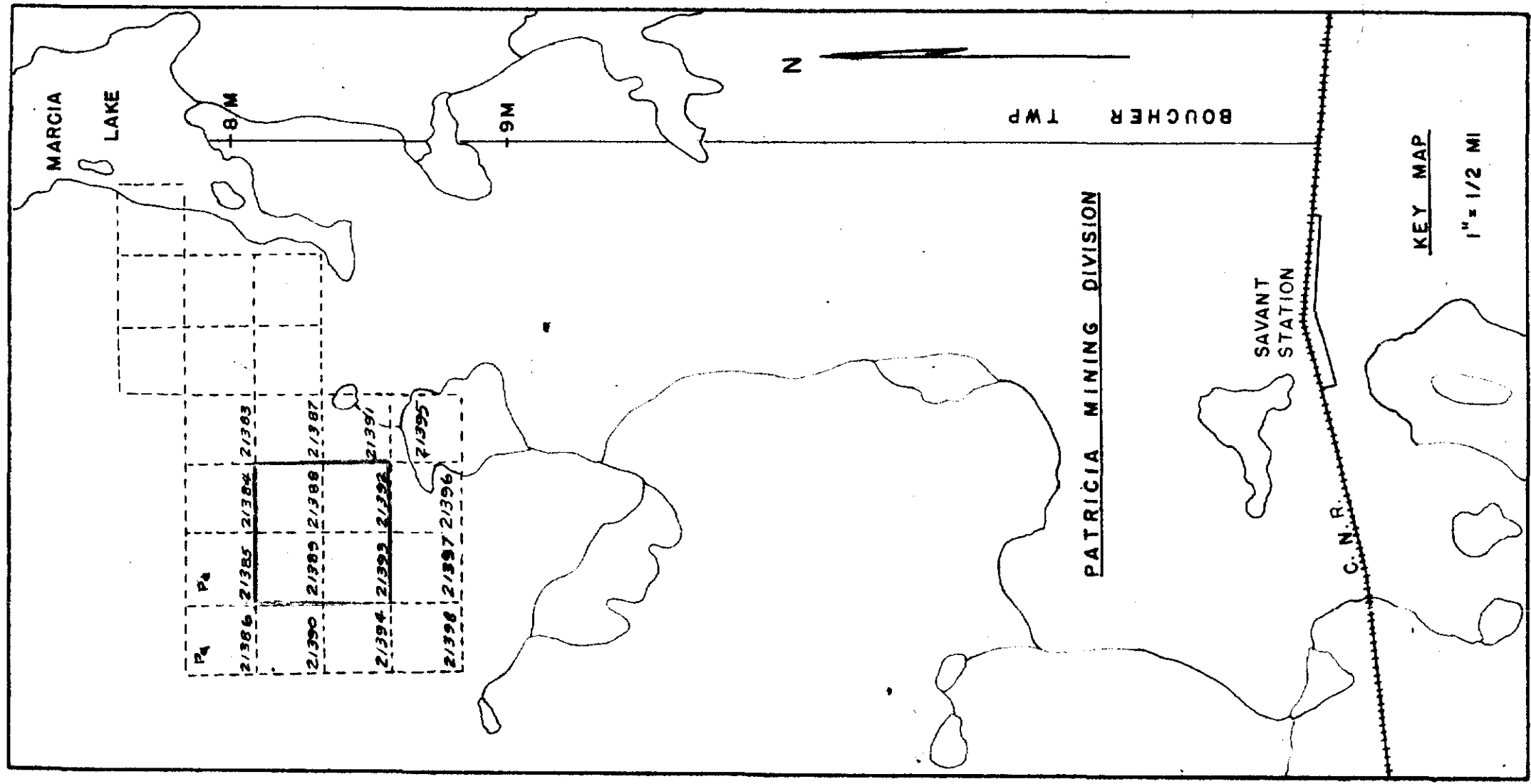
E. G. Pye.

SEE ACCOMPANYING
MAP(S) IDENTIFIED AS

52 J/07 SE - 0068-A1 # 1 - 2

LOCATED IN THE MAP
CHANNEL IN THE FOLLOWING
SEQUENCE (X)





SAVANT LAKE PROPERTY
LUN-ECHO GOLD MINES LIMITED N.P.L.

MAGNETOMETER SURVEY ELECTRO-MAG SURVEY

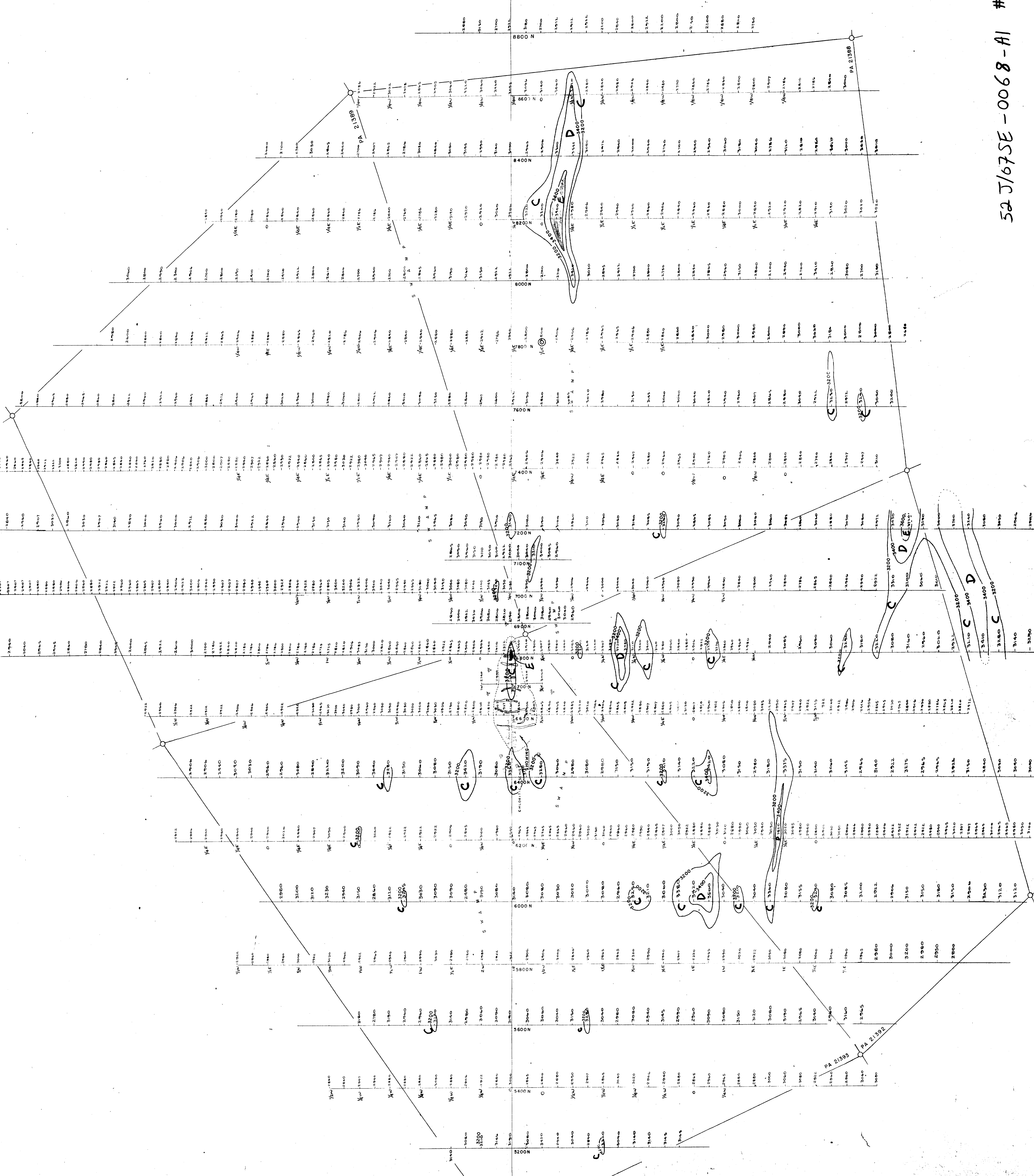
W 200 FT
DIP ANGLES
CONDUCTOR AXIS
CROSS-LINE

A 1000-1500 GAMMAS
 B 1500-2000 GAMMAS
 C 2000-2500 GAMMAS
 D 2500-3000 GAMMAS
 E 3000+ GAMMAS

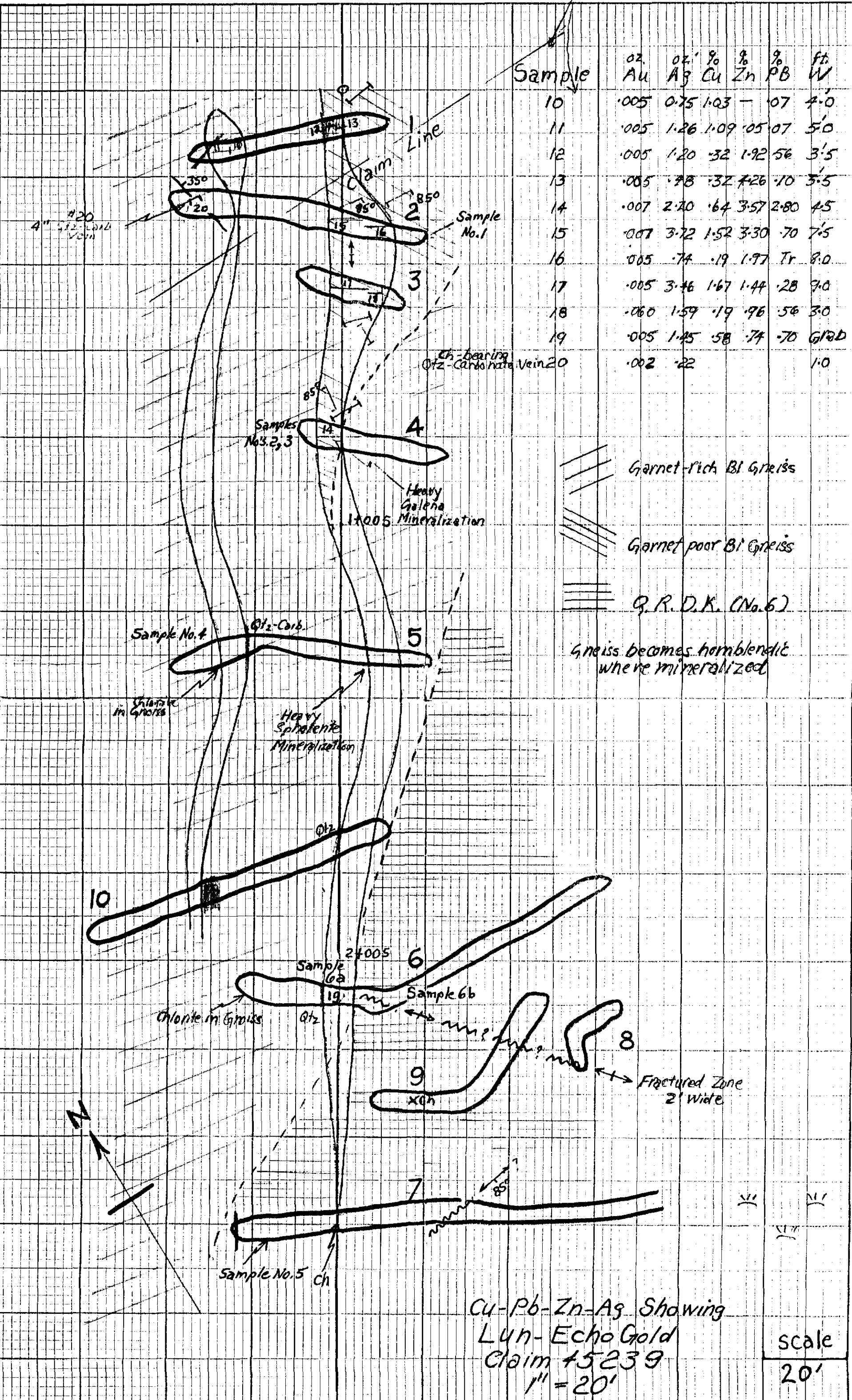
SCALE 1" = 100'

G.B. MARLING JUNE 56

18.978



No. 4 post
No. 2, 45236



Sample	oz. Au	oz. Ag	% Cu	% Zn	% Pb	ft. W
10	.005	0.75	1.03	-	.07	4.0
11	.005	1.26	1.09	.05	.07	5.0
12	.005	1.20	.32	1.92	.56	3.5
13	.005	.78	.32	7.26	.10	3.5
14	.007	2.70	.64	3.57	2.80	4.5
15	.007	3.72	1.52	3.30	.70	7.5
16	.005	.74	.19	1.97	Tr	8.0
17	.005	3.46	1.67	1.44	.28	9.0
18	.060	1.59	.19	.96	.56	3.0
19	.005	1.45	.58	.74	.70	GRD
	.002	.22				1.0

INSTRUMENTS (1981) LIMITED - TORONTO, OTTAWA, MONTREAL

Cu-Pb-Zn-Ag Showing
Lyn-Echo Gold
Claim #5239
1" = 20'
scale
20'

52 J/07 SE - 0068-A1 #2

