

Diamond Drilling



52J07SE9100 12 JUTTEN

010

Township of JUTTEN

Report NO 12

Work performed by: Monarch Gold Mines

Claim NO	Hole NO	Footage	Date	Note
Pa 32080	2	427.0'	Mar-Apr/65	
Pa 32083	3	283.0'	Apr/65	
	<hr/>	<hr/>		
	Total:- 2 DH	710'		

Notes:

# DIAMOND DRILL RECORD

Savant Lake Property  
PROPERTY Monarch Gold Mines Ltd.

HOLE No. 2

SHEET NUMBER 1

SECTION FROM 540' south, TO 740' west

STARTED 30 March 1965

LATITUDE 220 S.

SECTION No. 1 post Pa 32080

COMPLETED 7 April 1965

DEPARTURE 1800 l.

BEARING N. 30° W.

ULTIMATE DEPTH 420'

ELEVATION

DIP 0° - 45°; 380° - 35°

PROPOSED DEPTH

RECEIVED  
 PATRICKIA  
 MINING DIV.  
 JUN 28 1965  
 11:23:45 AM

DEPTH FEET	FORMATION	SAMPLE NO.	FROM	TO	WIDTH	AU	A
0'	Casing						
8	Buff, gray-green, med gr'd, highly carb'd, thickly bedded, num narrow frac's at 45°, sparse dis'd py, scat'd narrow calcite str's with dis'd py						
	12-13 lost core						
	34-35.5 " "						
	37-38 " "						
	74.5-76 " "						
	76.5-78.0 sheared with narrow calc str's, f. gr'd dis'd py						
116.0	Shear zone, chl-carb schist at 45°, py dis'd & in frac's	5006	116.0	117.5	1.5	11	0.02
	117.5-119.0 Lost core						
119.0	Andesite, chl'd & carb'd, num narrow carb str's						
147	Buff, med gr'd, gray-green, mass. occ'l qtz-carb str's.						
163							

NORTHERN MINER FORM 305 REV. 1/54

DRILLED BY Lantz Drilling Co.

SIGNED [Signature]

# DIAMOND DRILL RECORD

Savant Lake Property  
PROPERTY Monarch Gold Mines Ltd.

HOLE No. 2

SHEET NUMBER 2

SECTION FROM

TO

STARTED

LATITUDE

DATUM

COMPLETED

DEPARTURE

BEARING

ULTIMATE DEPTH

ELEVATION

DIP

PROPOSED DEPTH

DEPTH FEET	FORMATION	SAMPLE NO.	FROM	TO	WIDTH	ASSAY VALUES			
163.0	Andesite, chl'd & carb'd, num threads & str's of qtz-carb at various angles.								
379.5	Agglomerate, chl'd & carb'd								
396.5	Qtz porphyry, gray, med gr'd, contact sharp at 65° to core axis								
397.2	Agglomerate								
397.9	Quartz porphyry								
398.4	Andesite, chl'd & carb'd								
427	End of Hole.								

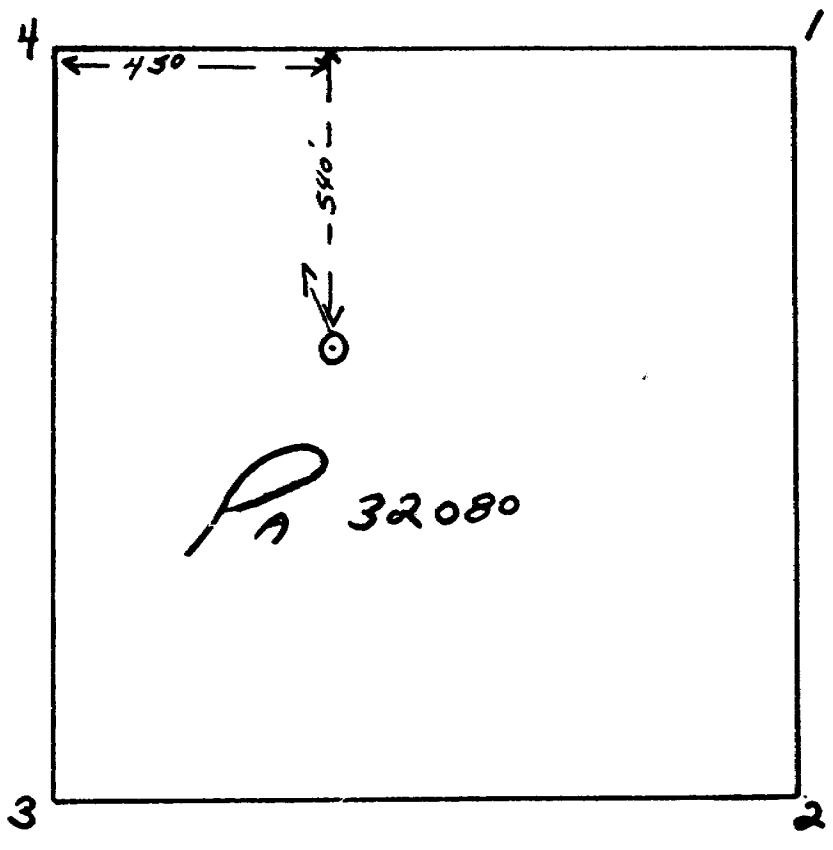
NORTHERN MINER FORM 305 REV 194

DRILLED BY

Lantz Drilling Co

SIGNED

[Signature]



# DIAMOND DRILL RECORD

Savant Lake Property  
PROPERTY Monarch Gold Mines Ltd.

HOLE No. 3

SHEET NUMBER 1 SECTION FROM TO  
LATITUDE 535 N. 625' north, 290' west  
DEPARTURE 2770 E. BEARING N. 5° W.  
ELEVATION DIP 0' - 45°; 270' - 40°

STARTED 13 April 1965  
COMPLETED 16 April 1965  
ULTIMATE DEPTH 283'  
PROPOSED DEPTH

DEPTH FEET	FORMATION	SAMPLE NO.	FROM	TO	WIDTH	ASSAY VALUES	
						AU	AG
0'	Casing						
4'	Conglomerate, greenstone & rhyolite pet les, green matrix, carb'd & chl'd, very soft, bedding at 45° - 55°; occ'l narrow calcite str., to 95' very frac'd & broken, from 95' more massive 40' - 45' Lost core 54 - 55 " " 63 - 65 " " 74 - 75 " " 78 - 80 " " 86 - 90 " " 120 - 125 few thin seams py-pyrh - cpy 130.8 1" qtz-carb str, py-pyrh-cpy						
159.4	Shear zone in graywacke, highly carb'd & chl'd, num calc str at 55°-60°, well min'd with py & spse cpy, py in seams up to 4" 165' - 168 Lost core 174.5 - 176 " " 182 - 183 " "	5007	159.4	163.0	3.6	N11	N11
		8	163.0	165.0	2.0	N11	N11
		9	168.0	172.0	4.0	N11	N11
		10	172.0	174.5	2.5	N11	N11
		11	176.0	180.0	4.0	N11	N11
		12	180.0	182.0	2.0	N11	N11
		13	185.0	190.0	5.0	N11	N11
		<del>182-183</del>					

NORTHERN MINER FORM 503 REV 1964

DRILLED BY Lantz Drilling Co.

SIGNED [Signature]

# DIAMOND DRILL RECORD

Savant Lake Property  
PROPERTY Monarch Gold Mines Ltd.

HOLE No. 3

SHEET NUMBER 2

SECTION FROM TO

STARTED

LATITUDE

DATUM

COMPLETED

DEPARTURE

BEARING

ULTIMATE DEPTH

ELEVATION

DIP

PROPOSED DEPTH

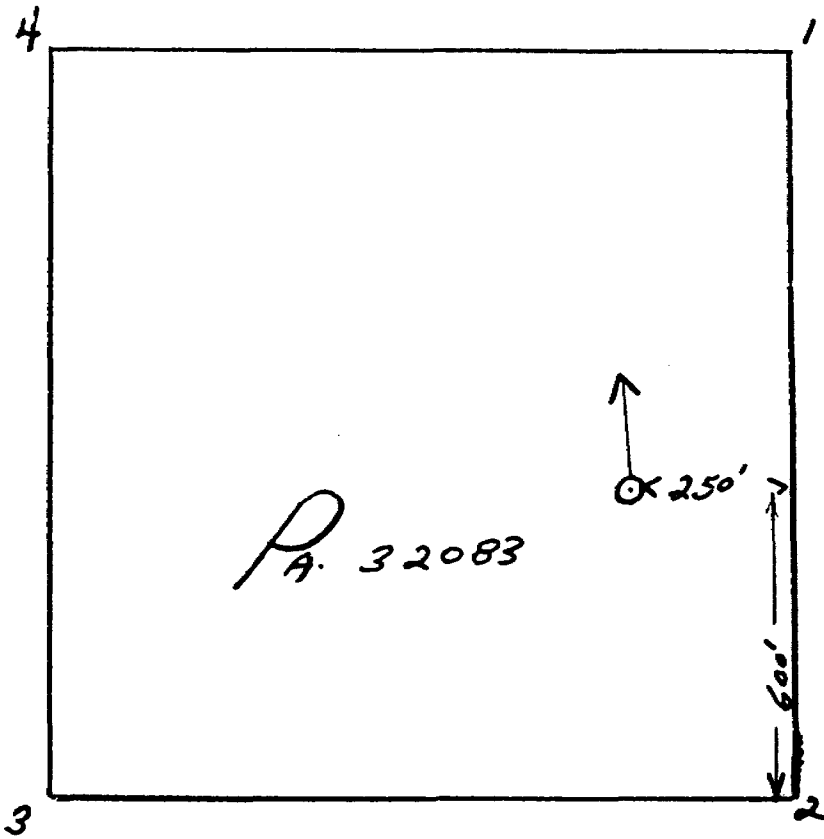
DEPTH FEET	FORMATION	SAMPLE NO.	FROM	TO	WIDTH	ASSAY VALUES	
						AU	AG
		5014	190.0	195.0	5.0	N11	N11
		15	195.0	200.0	5.0	N11	0.02
		16	200.0	205.0	5.0	N11	N11
		17	205.0	210.0	5.0	N11	N11
		18	210.0	215.0	5.0	N11	N11
		19	215.0	220.0	5.0	0.005	N11
		20	220.0	225.0	5.0	N11	N11
		21	225.0	230.0	5.0	N11	N11
		22	230.0	235.0	5.0	N11	0.02
		23	235.0	240.0	5.0	N11	0.03
239.5	Graywacke & shale, thinly bedded at 50°, scat'd calc strs parallel to bedding, scat'd seams of py to 260', from 260' to end no min. occ'l barren ctz str.						
283	End of Hole.						

NORTHERN MINER FORM 503 REV. 1964

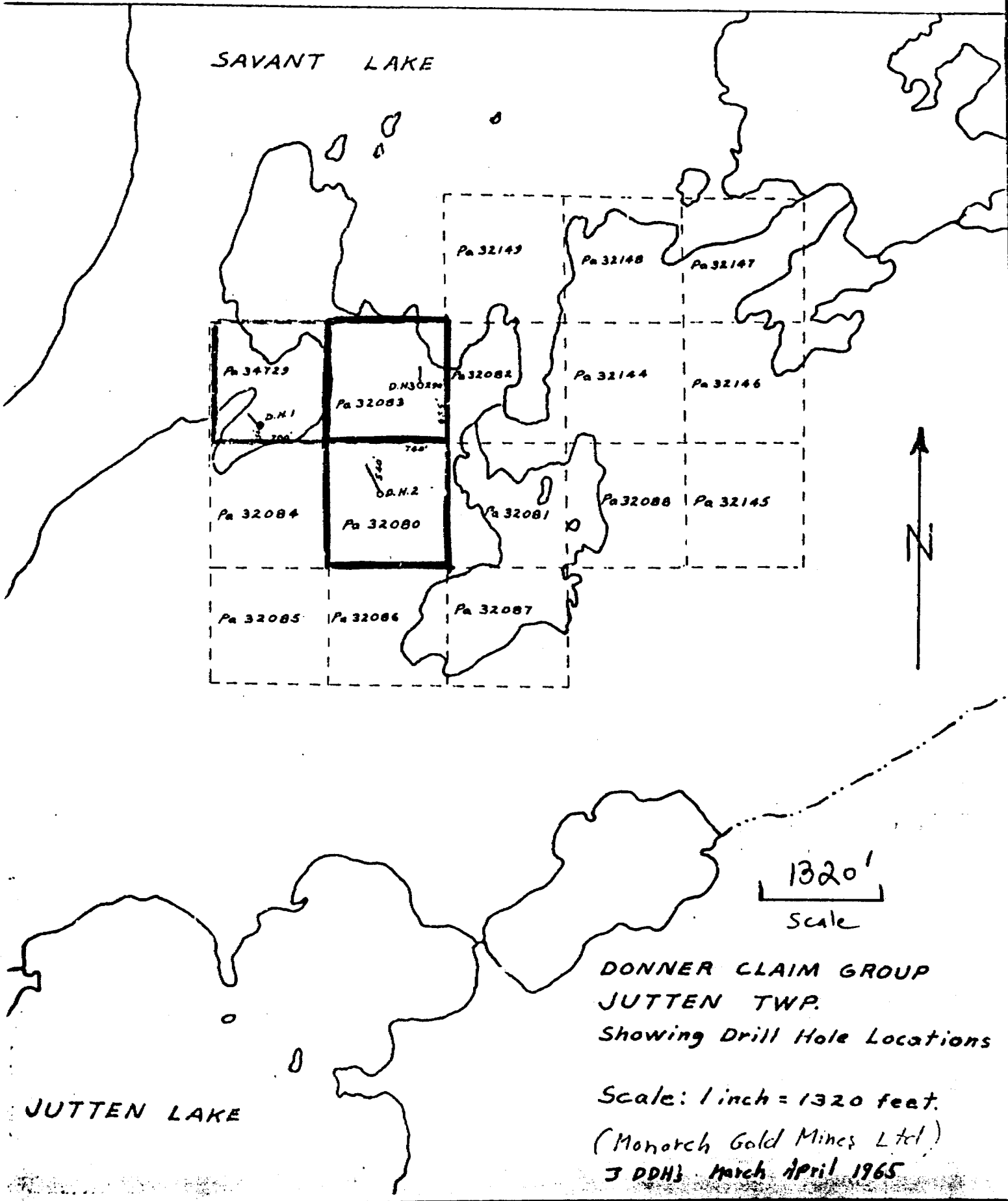
DRILLED BY Lantz Drilling Co

SIGNED

[Signature]



P.A. 32083



SAVANT LAKE

Pa 32143 Pa 32148 Pa 32147  
 Pa 32144 Pa 32146  
 Pa 32082 Pa 32081 Pa 32088 Pa 32145  
 Pa 32084 Pa 32080 Pa 32087  
 Pa 32085 Pa 32086



1320'  
 Scale

DONNER CLAIM GROUP  
 JUTTEN TWP.  
 Showing Drill Hole Locations

Scale: 1 inch = 1320 feet.

(Monarch Gold Mines Ltd.)  
 3 DDHs March April 1965

JUTTEN LAKE