



52J13NE0010 52J13NE0012 ROOT LAKE

010

Diamond Drilling

Area of Root Lake

Report NO 14

Work performed by: Capital Lithium Mines Ltd.

| Claim NO | Hole NO | Footage | Date | Note |
|-----------|---------|---------|---------|------|
| KRL 39467 | 1 | 706' | July/57 | |
| KRL 39441 | 2 | 703' | July/57 | |
| KRL 39445 | 3 | 497' | Aug/57 | |
| KRL 39464 | 4 | 551' | Aug/57 | |
| KRL 39440 | 5 | 783' | Aug/57 | |

Totals - 5 DH

3240'

Notes:

34 claim group

DIAMOND DRILL RECORD

PROPERTY Capital Lithium Mines Ltd. Root Lake, Ont.
 LAT. L 4 W (60° E)
 LOCATION: DEP. 1530' NOBL (Claim KRL 49467)
 ELEVATION OF COLLAR 1510.3'
 DATUM Root Lake 1425' Assumed
 DIRECTION AT START: BEARING N 45° W
 LOGGED BY S.K. Gullond HOR. COMP. 503'
P.J. Flemington VER. COMP. 496'
 PURPOSE OF HOLE Exploration

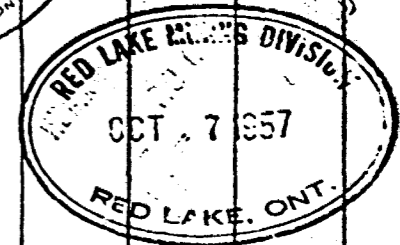
| TESTS | | | | | | | |
|-------|--------|--------------|-----|------|--------------|--------------|---------------|
| Ft. | Dip. | Ast. Bearing | Ft. | Dip. | Ast. Bearing | Cuts | |
| | | | | | | Ft. Received | p.c. Recovery |
| 200' | 39°30' | | | | | 696 | 100 |
| 500' | 47°50' | | | | | | |
| 700' | 50° | | | | | | |

HOLE NUMBER 1
 SHEET NO. 1
 SECTION FROM 10 TO 706
 STARTED July 17, 1957.
 COMPLETED July 26, 1957.
 ULTIMATE DEPTH 706'
 PROPOSED DEPTH 700'

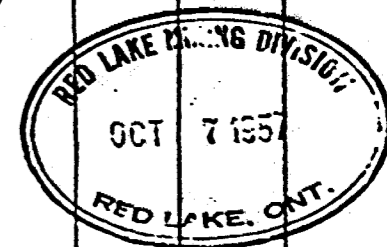
DRILLED BY CONTINENTAL DIAMOND DRILLING CO., LTD.

MONEY PRINTING SERVICE, TORONTO-4804

| Distance | | ROCK | DESCRIPTION | Sample No. | Length Ft. | ANALYSIS | | | | | | | | | | | |
|----------|-------|----------------------------------|---|------------|------------|----------|-----|-----|-----|-----|------|--|--|--|--|--|--|
| From | To | | | | | As. | Ag. | Pb. | Zn. | Cu. | Ave. | | | | | | |
| 0.0 | 10.0 | Overburden | Casing. | | | | | | | | | | | | | | |
| 10.0 | 42.5 | Sheared greenstone | Dark greenish-grey, fine frained, silicified, fine scattered specks (minor) chalcoppyrite & pyrrhotite. 16.0 - 17.5 Tourmaline pegmatite, C/A 45°. 23.8 - 24.4 White quartz, C/A irregular 25°. | | | | | | | | | | | | | | |
| 42.5 | 53.5 | Garnet hornblende schist | Dark green, medium grained, scattered garnets (many) up to 1/8". Pyrrhotite & some chalcoppyrite (disseminated). | | | | | | | | | | | | | | |
| 53.5 | 96.0 | Siliceous sheared greenstone | Greenish grey, fine grained, shearing, C/A 25°. 76.0 - 79.0 White tourmaline pegmatite, medium grained, C/A 15° - 20°. | | | | | | | | | | | | | | |
| 96.0 | 142.0 | Quartz biotite hornblende schist | Grey & greenish grey banded, fine & medium grained, mineralized with pyrrhotite plus some bornite, schistosity, C/A 40°. 104.3 - 130.0 Banded magnetite. | | | | | | | | | | | | | | |
| 142.0 | 246.0 | Quartz biotite gneiss | Pale brownish-grey, mainly fine grained, gneissosity at 146.0, C/A 30° at 210.0, C/A 75°. 142.0 - 160.0 Heavy pyrrhotite. 218.0 - 219.5 White tourmaline pegmatite & muscovite, C/A 75°. | | | | | | | | | | | | | | |
| 246.0 | 248.5 | Pegmatite | White & pink, coarse grained & muscovite, C/A 75°. | | | | | | | | | | | | | | |
| 248.5 | 257.2 | Quartz biotite gneiss | Pale brownish grey, fine grained, gneissosity, C/A 70°. 248.5 - 250.0 High hornblende & garnets. | | | | | | | | | | | | | | |
| 257.2 | 290.0 | Banded magnetite | Grey & green banded, fine grained, silicified, C/A 70°. 268.0 - 271.0 Pink pegmatite, coarse grained, C/A irregular 60°. 286.5 - 287.0 Quartz & pyrite. | | | | | | | | | | | | | | |
| 290.0 | 300.0 | Tourmaline pegmatite | Grey, medium grained, stringers of pyrite and pyrrhotite. | | | | | | | | | | | | | | |
| 300.0 | 311.0 | Quartz hornblende schist | Green & grey banded, fine medium grained, schistosity, C/A 70°. | | | | | | | | | | | | | | |



| Distance | | ROCK | DESCRIPTION | Sample No. | Length Ft. | ANALYSIS | | | | | | |
|----------|-------|-----------------------------|---|------------|------------|--------------------------|-----|-----|-----|-----|------|----------|
| From | To | | | | | As. | Ag. | Fl. | Zn. | Cu. | Ave. | |
| 311.0 | 706.0 | Quartz biotite gneiss | Grey, fine-medium grained intruded by white pegmatites, gneissosity, | | | C/A 40° - 45° at 350' | | | | | | |
| | | | 314.0 - 314.8 White pegmatite, medium grained with muscovite, garnets, & some tourmaline, | | | C/A 45° at 706' | | | | | | |
| | | | 314.5 - 315.2 " " " " " " " " " " | | | | | | | | | C/A 80°. |
| | | | 319.0 - 319.6 " " " " " " " " " " | | | | | | | | | C/A 30°. |
| | | | 346.0 - 348.5 " " " " " " " " " " | | | | | | | | | C/A 80°. |
| | | | 460.5 - 461.0 White pegmatite with muscovite, rose feldspar & tourmaline, | | | | | | | | | C/A 80°. |
| | | | 557.0 - 559.0 " " " " " " " " " " | | | C/A 70° - 80°. | | | | | | |
| | | | 679.0 - 679.9 White pegmatite with muscovite & tourmaline, | | | C/A 80°. | | | | | | |
| | | | 685.0 - 685.8 " " " " " " " " " " | | | C/A 60°. | | | | | | |
| | | | 686.5 - 687.0 " " " " " " " " " " | | | C/A 45°. | | | | | | |
| | | | 693.5 - 694.5 " " " " " " " " " " | | | C/A, irregular. | | | | | | |
| | | | 704.0 - 705.8 " " " " " " " " " " | | | C/A 60°. | | | | | | |
| | | | | | | C/A 40°, medium grained. | | | | | | |
| | | | Casing left in hole. | | | | | | | | | |
| 706.0 | | | END OF HOLE. | | | | | | | | | |



PROPERTY Capital Lithium Mines Ltd. 34 Claim Group, Root Lake, Ont.

DIAMOND DRILL RECORD

HOLE NUMBER 2

LAT. L 25 - 80 W

TESTS

SHEET NO. 1

LOCATION: DEP. 80' NOBL (Claim KRL 39441)

| Ft. | Dip. | Ast. Bearing | Ft. | Dip. | Ast. Bearing | Core | |
|------|--------|--------------|-----|------|--------------|--------------|---------------|
| | | | | | | Ft. Received | p.c. Recovery |
| 100' | 40° | | | | | | |
| 400' | 43°30' | | | | | 633 | 100 |
| 700' | 42°30' | | | | | | |

SECTION FROM 70 TO 703

STARTED July 28, 1957.

COMPLETED Aug. 4, 1957.

ULTIMATE DEPTH 703'

PROPOSED DEPTH 700'

ELEVATION OF COLLAR 1476.8

DATUM 1425' Root Lake, Assumed

BEARING N 48° W

DIRECTION AT START: S. K. Guimond 40°

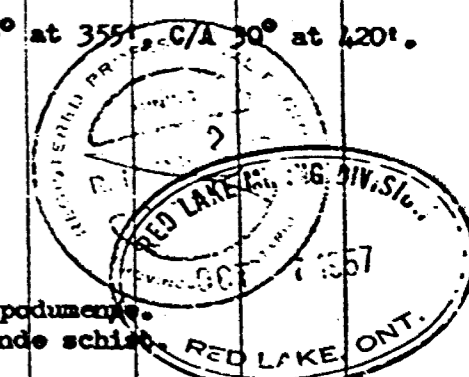
LOGGED BY P. J. Flemington HOR. COMP. 556'

PURPOSE OF HOLE Exploration VER. COMP. 427'

DRILLED BY CONTINENTAL DIAMOND DRILLING CO. LTD.

MONEY PRINTING SERVICE, TORONTO—4804

| Distance | | ROCK | DESCRIPTION | Sample No. | Length Ft. | ANALYSIS | | | | | | | | | | | |
|----------|-------|-----------------------------|---|------------|------------|----------|-----|-----|-----|-----|------|--|--|--|--|--|--|
| From | To | | | | | Av. | Ag. | Pb. | Zn. | Cu. | Ava. | | | | | | |
| 0.0 | 70.0 | Casing | Overburden. | | | | | | | | | | | | | | |
| 70.0 | 121.0 | Quartz biotite gneiss | Grey with pale brown tinge, fine grained, scattered fine pyrrhotite, gneissosity, C/A 65° at 83' & at 116'. 79.3 - 71.0 Sheared greenstone. 83.5 - 84.5 Garnet, hornblende banded schist. 118.0 - 201.0 Pink pegmatite, coarse grained, contact C/A 65°. | | | | | | | | | | | | | | |
| 121.0 | 214.5 | Magnetite formation | Grey and dark grey, banded in parts, fine grained, banding C/A 45° at 140', banding C/A 65° at 162', contorted at 180' - 214.5', in places banding parallel with core, footwall C/A 65°. 144.5 - 146.0 Pink pegmatite medium grained C/A 45°. 206.0 - 210.5 Pink pegmatite, medium grained, C/A 65°. | | | | | | | | | | | | | | |
| 214.5 | 444.8 | Quartz biotite gneiss | Pale brownish-grey, fine grained, parts medium grained, gneissosity C/A 30° at 220', C/A 25°-30° at 355', C/A 30° at 420'. 214.5 - 240.0 Pyrite in fractures. 224.8 - 228.0 Silicified zone, high hornblende in parts, C/A 55°-60°. 220.5 - Blebs of chalcopyrite. 377.8 - 384.4 White & rose pegmatite, coarse grained, C/A 60°, contains muscovite. | | | | | | | | | | | | | | |
| 444.8 | 467.5 | Pegmatite | White, coarse grained and muscovite & greenish mica, C/A 55°. | | | | | | | | | | | | | | |
| 467.5 | 488.0 | Quartz biotite gneiss | Pale brownish grey, fine grained, bottom 5' silicified, contains pyrite, gneissosity, C/A 45°. | | | | | | | | | | | | | | |
| 488.0 | 605.0 | Pegmatite | White, coarse grained, high quartz & muscovite, contains tourmaline near contacts, no visible spodumene. | | | | | | | | | | | | | | |
| 605.0 | 616.0 | Quartz biotite gneiss | Grey, fine and medium grained, contains short sections of banded magnetite with garnet, hornblende schist. | | | | | | | | | | | | | | |
| 616.0 | 624.0 | Banded magnetite | Grey & green banded, fine grained, low grade magnetite, many clusters of garnets, short sections of quartz biotite gneiss, banding C/A 40° - 45°. | | | | | | | | | | | | | | |
| 624.0 | 703.0 | Quartz biotite gneiss | Pale brownish grey, fine & medium grained, gneissosity C/A 45° at 640', C/A 85°-90° at 695'. 670.5 - 675.0 Tourmaline aplite, white, fine grained, high muscovite, some fine beryl, tourmaline near contacts, C/A 35°. 686.0 - 694.0 Siliceous banded garnet, hornblende schist, very slightly magnetic in parts, banding C/A 80°-90°. | | | | | | | | | | | | | | |
| | | | Casing not pulled. | | | | | | | | | | | | | | |
| 703.0 | | | END OF HOLE. | | | | | | | | | | | | | | |



PROPERTY Capital Lithium Mines Ltd. 34 Claim Group, Root Lake, Ont.

DIAMOND DRILL RECORD

HOLE NUMBER 3
 SHEET NO. 1
 SECTION FROM 8.0 TO 497.0
 STARTED Aug. 6, 1957.
 COMPLETED Aug. 9, 1957.
 ULTIMATE DEPTH 497'
 PROPOSED DEPTH 500'

LAT. L 20 W
 LOCATION: DEP. 420' SOBL (Claim KRL 39445)
 ELEVATION OF COLLAR 1511.6'
 DATUM 1425' Root Lake, Assumed
 BEARING South
 DIRECTION AT START: 40°
 LOGGED BY S. K. Guinand
P. J. Flemington HOR. COMP. 414'
 PURPOSE OF HOLE Exploration VER. COMP. 273'

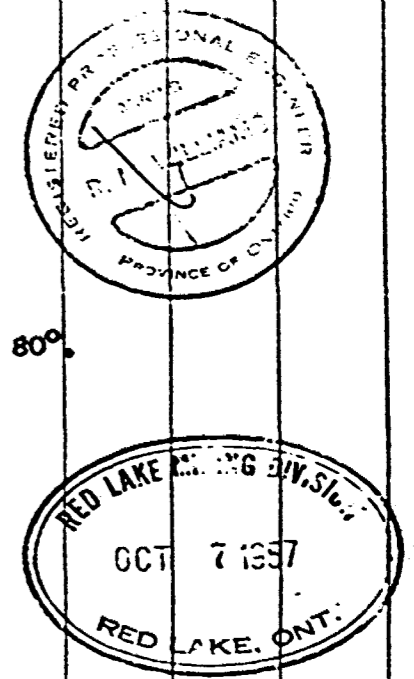
| TESTS | | | | | | Core | |
|-------|------|--------------|-----|------|--------------|--------------|---------------|
| Ft. | Dip. | Ast. Bearing | Ft. | Dip. | Ast. Bearing | Ft. Received | p.c. Recovery |
| 250' | 33° | | | | | 479.5 | 98.1 |
| 497' | 27° | | | | | | |

DRILLED BY CONTINENTAL DIAMOND DRILLING CO. LTD.

MONEY PRINTING SERVICE, TORONTO-1804

| Distance | | ROCK | DESCRIPTION | Sample No. | Length Ft. | ANALYSIS | | | | | | | | | |
|----------|-------|--------------------------------------|--|------------|------------|----------|-----|-----|-----|-----|----|------|--|--|--|
| From | To | | | | | As. | Ag. | Pb. | Zn. | Cu. | I. | Ave. | | | |
| 0.0 | 8.0 | Casing | Overburden. | | | | | | | | | | | | |
| 8.0 | 276.0 | Garnet hornblende schist | Grey & greenish grey, fine grained, siliceous, clusters of garnets scattered throughout along schistosity planes, short sections containing biotite & sericite mica, schistosity:- C/A 30° at 25', C/A 50° at 147', C/A 50° at 255', C/A 70° at 276'. 15.0 - 19.0 Siliceous sulphide zone, mainly pyrrhotite, little chalcopryite, epidotized. 29.0 - 33.0 " " " " " " 180.0 - 186.0 Brecciated zone, siliceous matrix with biotite. 207.0 - 211.0 Mica schist. 211.0 - 214.5 white tourmaline pegmatite, C/A 45°. 214.5 - 219.0 Mica schist, carbonate. 219.0 - 220.5 White quartz carbonate, C/A 60°. | | | | | | | | | | | | |
| 276.0 | 282.0 | Siliceous sulphide zone | Grey, fine grained siliceous, contains pyrite, pyrrhotite & some chalcopryite. | | | | | | | | | | | | |
| 282.0 | 285.0 | Mica schist | Dark brownish grey, medium grained, mainly biotite. | | | | | | | | | | | | |
| 285.0 | 298.5 | Pegmatite | White & rosey coarse grained, contains biotite & muscovite, no visable spodumene, C/A 55°. | | | | | | | | | | | | |
| 298.5 | 306.0 | Quartz mica schist | Grey & pale brown, fine grained, schistosity, C/A/60°. | | | | | | | | | | | | |
| 306.0 | 347.5 | Quartz mica garnet hornblende schist | Grey & greenish grey, mainly fine grained schistosity, C/A 65°. 326.0 - 331.0 Pink pegmatite, coarse grained, coarse pink feldspar, muscovite & biotite, C/A 80°. | | | | | | | | | | | | |
| 347.5 | 377.5 | Magnetite formation | Grey & dark greenish grey banded, mainly fine grained, banding at 60°. | | | | | | | | | | | | |
| 377.5 | 497.0 | Quartz mica hornblende schist | Grey & greenish grey, fine gained, siliceous. 458.0 - 459.5 White pegmatite, high quartz, coarse grained. LOST CORE:- 389.0 - 392.0 , 3' 462.0 - 463.0 , 1' 446.5 - 447.5 , 1' 470.5 - 471.5 , 1' 456.5 - 460.0 , 3.5' | | | | | | | | | | | | |
| 497.0 | 497.0 | | END OF HOLE. | | | | | | | | | | | | |

TOTAL: 9.5'



PROPERTY Capital Lithium Mines Ltd. 34 Claim Group, Root Lake, Ont.

DIAMOND DRILL RECORD

HOLE NUMBER 4

SHEET NO. 1

SECTION FROM 7.0 TO 551.0

STARTED Aug. 14, 1957.

COMPLETED Aug. 17, 1957.

ULTIMATE DEPTH 551'

PROPOSED DEPTH 550'

LAT. Line 0 - 00
 LOCATION: DEP. 9 - 30 SOEL (Claim KRL 39464)

ELEVATION OF COLLAR 1480.1

DATUM 1420' Root Lake, Assumed

BEARING South
 DIRECTION AT START: DIP 40

LOGGED BY S.K. Guimond & R. Cunningham COMP. 479'

PURPOSE OF HOLE Exploration VER. COMP. 268'

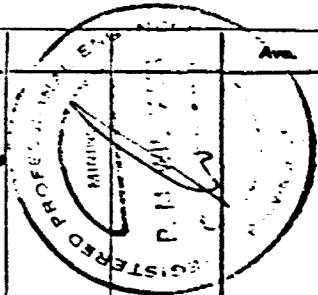
TESTS

| Fl. | Dip. | Ast. Bearing | Fl. | Dip. | Ast. Bearing | Core | |
|------|------|--------------|-----|------|--------------|--------------|---------------|
| | | | | | | Fl. Received | p.c. Recovery |
| 200' | 31° | | | | | | |
| 400' | 23° | | | | | 544 | 100 |
| 550' | 24° | | | | | | |

DRILLED BY CONTINENTAL DIAMOND DRILLING CO. LTD.

HONEY PRINTING SERVICE, TORONTO—4004

| Distance | | ROCK | DESCRIPTION | Sample No. | Length Ft. | ANALYSIS | | | | | Ave. | |
|----------|-------|----------------------------------|---|------------|------------|----------|-----|-----|-----|-----|------|--|
| From | To | | | | | As. | Ag. | Pb. | Zn. | Cu. | | |
| 0.0 | 7.0 | Casing | | | | | | | | | | |
| 7.0 | 95.0 | Quartz biotite hornblende schist | Grey & greenish grey, fine grained, medium hard, scattered pyrite & pyrrhotite, estimated 3% siliceous, schistosity, C/A 25° - 30°. | | | | | | | | | |
| 95.0 | 114.4 | Siliceous sulphide zone | Grey & dark grey, fine grained, estimated 20% pyrite & pyrrhotite. | | | | | | | | | |
| 114.4 | 125.0 | Quartz biotite gneiss | Grey, greenish grey, fine to medium grained, sort section of mica schist from 119.8 - 123.0, gneissosity C/A 30° - 45°. | | | | | | | | | |
| 125.0 | 132.5 | Quartz mica schist | Grey & greenish black, fine grained, sections with hornblende. | | | | | | | | | |
| 132.5 | 143.5 | Magnetite | Grey & greenish grey, fine grained, siliceous, chloritized bands, estimated 40% magnetite, banding irregular C/A 30° - 40°. | | | | | | | | | |
| 143.5 | 189.0 | Quartz biotite gneiss | Grey & black fine to medium grained, sections high in biotite, gneissosity C/A 30° - 40°, scattered pyrite & pyrrhotite estimated 3%. | | | | | | | | | |
| 189.0 | 190.8 | Pegmatite | Pink & green, coarse grained, coarse biotite, pforite & pyrrhotite on the foot wall contact, estimated 8%, C/A 30°. | | | | | | | | | |
| 190.8 | 205.0 | Quartz biotite gneiss | As previous, 191.5 - 193.5 magnetite, estimated 40%. | | | | | | | | | |
| 205.0 | 209.0 | Quartz biotite hornblende gneiss | Greenish grey, coarse grained, gneissosity C/A 40°. | | | | | | | | | |
| 209.0 | 213.5 | Magnetite | As previous, estimated 42% magnetite. | | | | | | | | | |
| 213.5 | 219.5 | Quartz biotite gneiss | Grey, fine grained, C/A 50°. | | | | | | | | | |
| 219.5 | 262.5 | Magnetite | As previous, estimated 43% magnetite. | | | | | | | | | |
| 262.5 | 334.0 | Quartz biotite gneiss | Brownish grey fine grained, C/A 50°. | | | | | | | | | |
| 334.0 | 386.0 | Banded magnetite | Similar to previous only more banded, estimated 44% magnetite. | | | | | | | | | |
| 386.0 | 551.0 | Pegmatite | Pink & grey, coarse grained, coarse pink feldspar, coarse biotite & muscovite no visible spodumene, scattered pyrite. | | | | | | | | | |
| 551.0 | | | END OF HOLE. | | | | | | | | | |



Capital Lithium Mines Ltd.
 PROPERTY 34 Claim Group, Root Lake, Ont.
 LOCATION: LAT. L 28 + 00 W
DEP. 19 + 40 SOBL (Claim KRL 39440)
 ELEVATION OF COLLAR 1454.70'
 DATUM 1420' Root Lake, Assumed
 BEARING South
 DIRECTION AT START: DIP 45°
 LOGGED BY S. K. Guilmond HOR. COMP. 598.58
R. Cunningham
 PURPOSE OF HOLE Exploration VER. COMP. 502.74

DIAMOND DRILL RECORD

TESTS

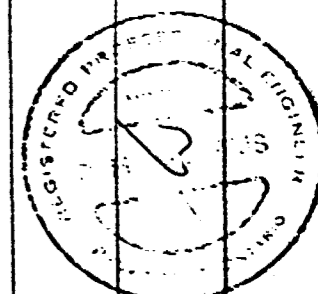
| Ft. | Dip. | Ast. Bearing | Ft. | Dip. | Ast. Bearing | Core | |
|------|--------|--------------|-----|------|--------------|--------------|---------------|
| | | | | | | Ft. Received | p.c. Recovery |
| 100' | 40°30' | | | | | 769.0 | 99.6 |
| 300' | 43°00' | | | | | | |
| 500' | 41°30' | | | | | | |
| 780' | 31°30' | | | | | | |

HOLE NUMBER 5
 SHEET NO. 1
 SECTION FROM 11.0 TO 783.0
 STARTED August 17, 1957.
 COMPLETED August 25, 1957.
 ULTIMATE DEPTH 783
 PROPOSED DEPTH 780

DRILLED BY CONTINENTAL DIAMOND DRILLING CO., LTD.

MONEY PRINTING SERVICE, TORONTO—4804

| Distance | | ROCK | DESCRIPTION | Sample No. | Length Ft. | ANALYSIS | | | | | | | | | | |
|----------|-------|---|--|------------|------------|----------|-----|-----|-----|-----|------|--|--|--|--|--|
| From | To | | | | | Au. | Ag. | Pb. | Zn. | Cu. | Ava. | | | | | |
| 0.0 | 11.0 | Overburden | Casing. | | | | | | | | | | | | | |
| 11.0 | 171.0 | Quartz biotite hornblende schist | Grey, green grey with sections pale brown, fine to medium grained, mainly hard, short sections medium hard, numerous clusters of garnets. At 11.0 - 90.0 C/A 25° - 30°, 90.0 - 171.0 C/A 35°. 64.0 - 75.0 Fair mineralization, approx. 6% pyrite & pyrrhotite. 82.0 - 93.0 4% approx. pyrite & pyrrhotite. 107.0 - 130.0 2% approx. pyrite & pyrrhotite. 130.0 - 148.0 3% approx. pyrite & pyrrhotite. 152.5 - 167.5, 7% approx. pyrite & pyrrhotite. | | | | | | | | | | | | | |
| 171.0 | 203.0 | Quartz biotite hornblende gneiss | Grey, fine & medium grained C/A 45°. | | | | | | | | | | | | | |
| 203.0 | 293.0 | Quartz biotite hornblende schist | As previous 205.9 - 207.5 Approx. 10% pyrite & pyrrhotite. 265.0 - 276.0 Approx. 1% " " 276.0 - 287.5 Graphitic schist, black & grey with white calcite, fine to medium grained, est. 6% pyrite. 287.5 - 293.0 Banded magnetite, fine grained, siliceous, est. 35% magnetite. | | | | | | | | | | | | | |
| 293.0 | 783.0 | Quartz biotite gneiss | Grey, fine, medium grained, high biotite. Minor pyrite in fracture, less than 0.5%. 293.0 - 500.0 Gneissosity C/A 45°. 310.0 - 10 inches white pegmatite, medium grained, muscovite & garnets. 446.0 - 446.7 White pegmatite, medium grained, high muscovite, C/A 65°. 461.0 - 462.5 As above, scattered beryl, minor, C/A 65°. 463.5 - 1/2 inch white pegmatite with green beryl, minor. 464.0 - 2 inches as above. 477.0 - 4 inches as above. 479.3 - 481.2 As above. 518.0 - 523.5 High hornblende & garnets. 540.5 - 547.5 " " " 698.5 - 4 inches white pegmatite, high muscovite. 708.0 - 4 inches as above with 1/8" beryl crystal. 735.8 - 736.8 As above. 781.0 - 3 inches white pegmatite, high muscovite. 520.0 - 783.0 Gneissosity C/A 75°. | | | | | | | | | | | | | |
| 783.0 | | | END OF HOLE. | | | | | | | | | | | | | |





52J13NE0010 52J13NE0012 ROOT LAKE

900

CAPITAL LITHIUM MINES LTD.

34 CLAIM GROUP

KENORA DISTRICT, RED LAKE MINING DIVISION, ONTARIO.

MEMO:

This holding of 34 claims for the purpose of assessment work by diamond drilling has been divided into 3 Groups: Group 1 having 12 claims, Group 2 having 18 claims, and Group 3 having 4 claims.

The attached pertains to Group 3 of 4 claims, for a credit of 137.7 days per claim.

| <u>Claim Numbers</u> | <u>No. of Claims</u> |
|----------------------|----------------------|
| KRL 39450-1 | 2 |
| 39463-4 | 2 |
| | <u>4 Claims</u> |

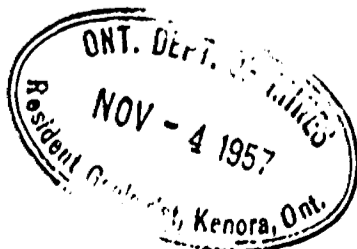
Diamond Drilling:

No. of Holes 1
Total Footage 551.0, or, 137.7 days per claim

| <u>No. Hole</u> | <u>Footage</u> | <u>Claim No.</u> |
|-----------------|----------------|------------------|
| 4 | 551.0 | KRL 39464 |
| Totals | 1 Hole | 551.0 Feet |
| | | On 1 Claim |

- Attached hereto:
1. Report of Work forms
 2. Logs of above hole in duplicate
 3. Sections of above hole in duplicate
 4. Property map, showing location of hole

Toronto, Ontario,
October 2nd, 1957,
ep.



CAPITAL LITHIUM MINES LTD.

34 CLAIM GROUP

KENORA DISTRICT, RED LAKE MINING DIVISION, ONT.

MEMO:

This holding of 34 claims for the purpose of assessment work by diamond drilling has been divided into 3 groups, Group 1 having 12 claims, Group 2 having 18 claims, and Group 3 having 4 claims.

The attached pertains to Group 2 of 18 claims, for a credit of 71.1 days per claim.

| <u>Claim No.</u> | <u>No. of Claims</u> |
|------------------|----------------------|
| KRL 39439-40 | 2 |
| 39443-45 incl. | 3 |
| 39447-49 incl. | 3 |
| 39452-56 incl. | 5 |
| 39459-61 incl. | 3 |
| 39465 | 1 |
| 39468 | 1 |
| | <u>18</u> Claims |

Diamond Drilling:

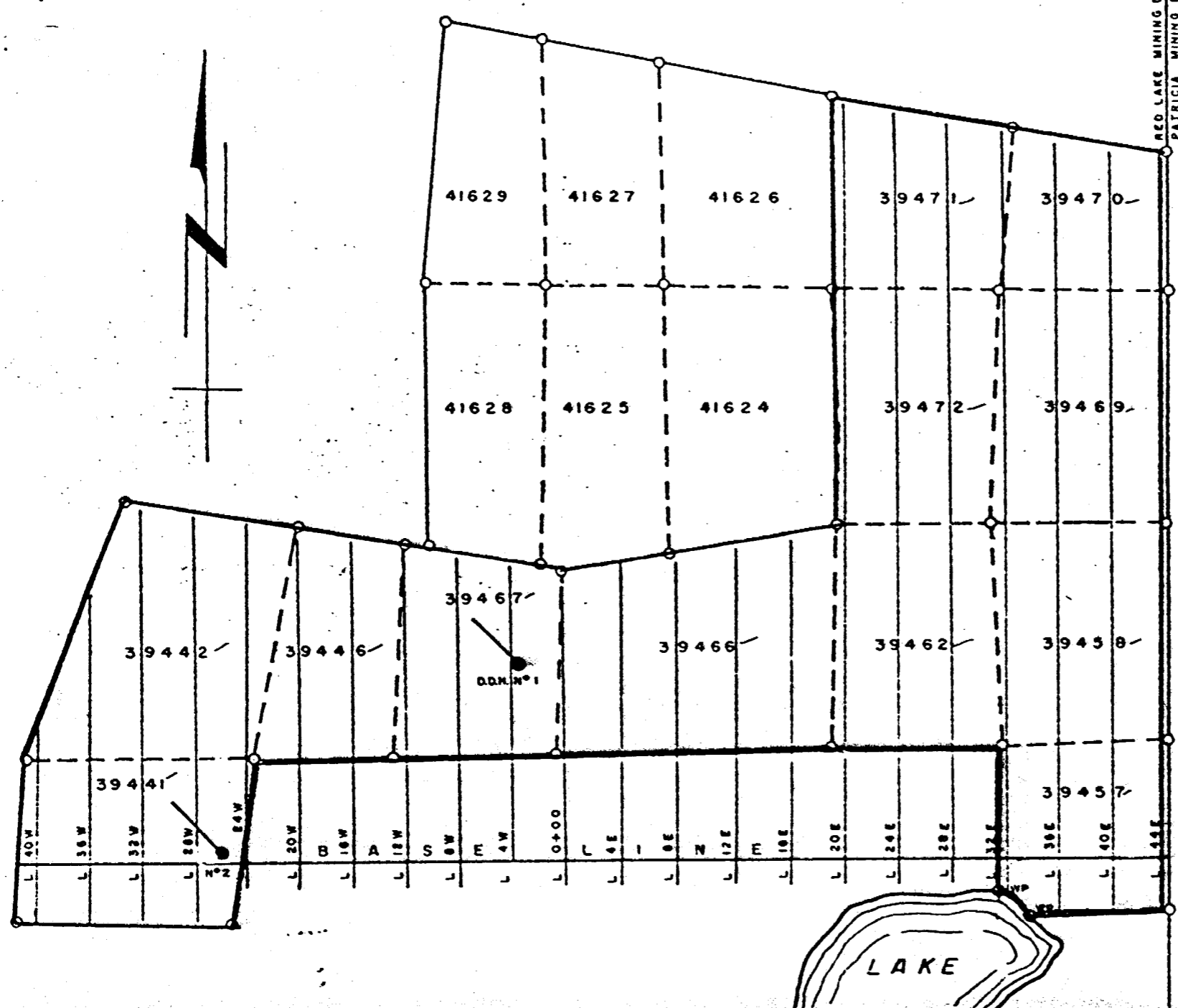
No. of Holes 2
Total Footage 1,280.0, or, 71.1 days per claim

| <u>Hole No.</u> | <u>Footage</u> | <u>Claim No.</u> | |
|-----------------|----------------|---------------------|--------------------|
| 3 | 497.0 | KRL 39445 | |
| 5 | 783.0 | " 39440 | |
| <u>Totals</u> | <u>2 Holes</u> | <u>1,280.0 Feet</u> | <u>On 2 Claims</u> |

- Attached hereto:
1. Report of Work forms
 2. Logs of above holes in duplicate
 3. Sections of above holes in duplicate
 4. Property map, showing location of holes

Toronto, Ontario,
October 2nd, 1957.
ep





| O.D.M. N° | DEPTH |
|-----------|-------|
| 1 | 706' |
| 2 | 703' |
| TOTAL | 1409' |

GROUP (1)
12
(10 CLAIMS)

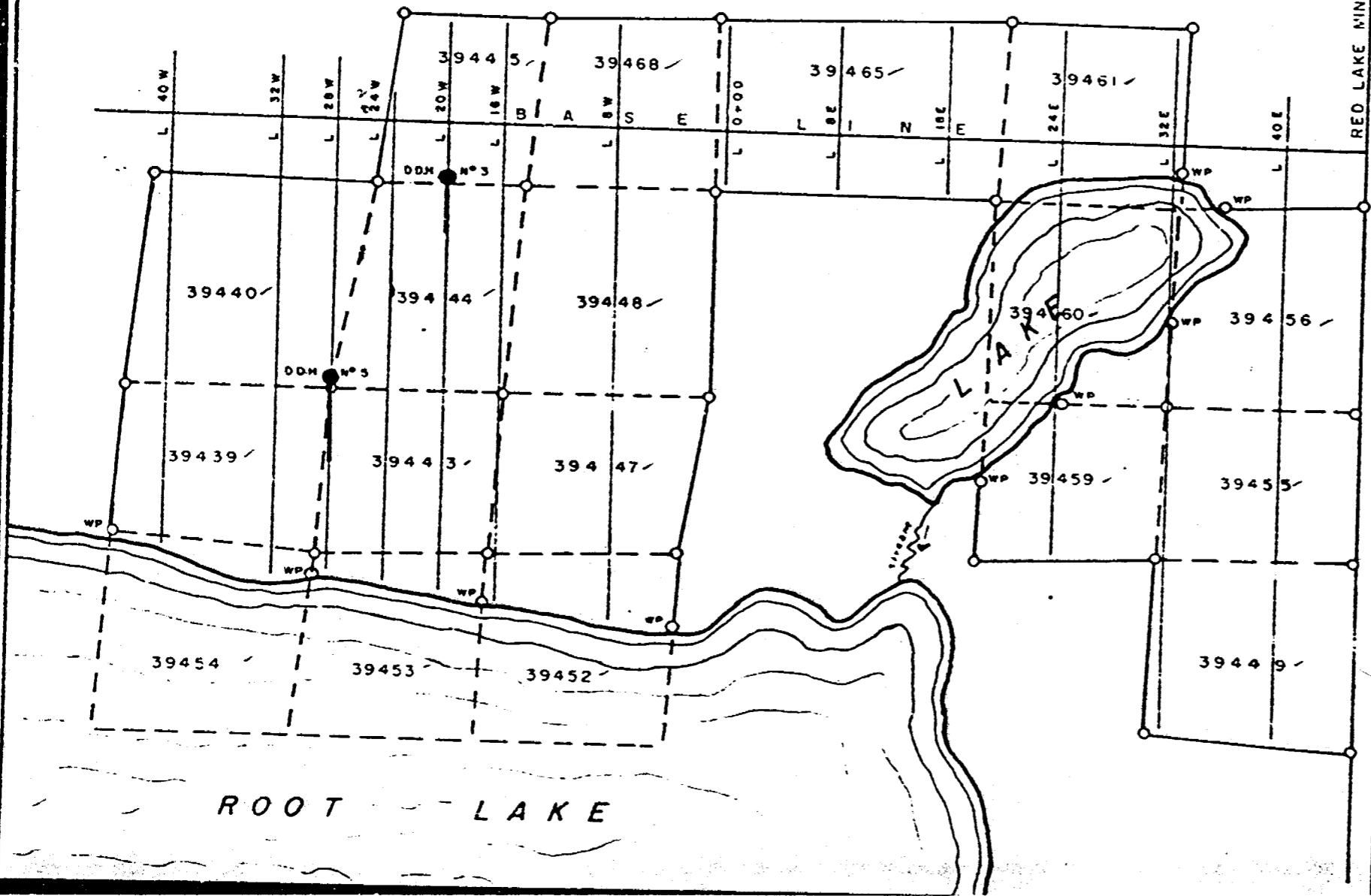
CAPITAL LITHIUM MINES LTD.
(~~30~~³⁴ CLAIM GROUP)
ROOT LAKE AREA (M-2340)
PLAN SHOWING
ASSESSMENT DRILLING

RED LAKE MINING DIVISION - KENORA DIST.
ONTARIO.

SCALE: 1" = 1000'

SEPT. 1957.

J.W.E.



| DDM N° | DEPTH |
|--------|-------|
| 3 | 497' |
| 5 | 783' |
| TOTAL | 1280' |

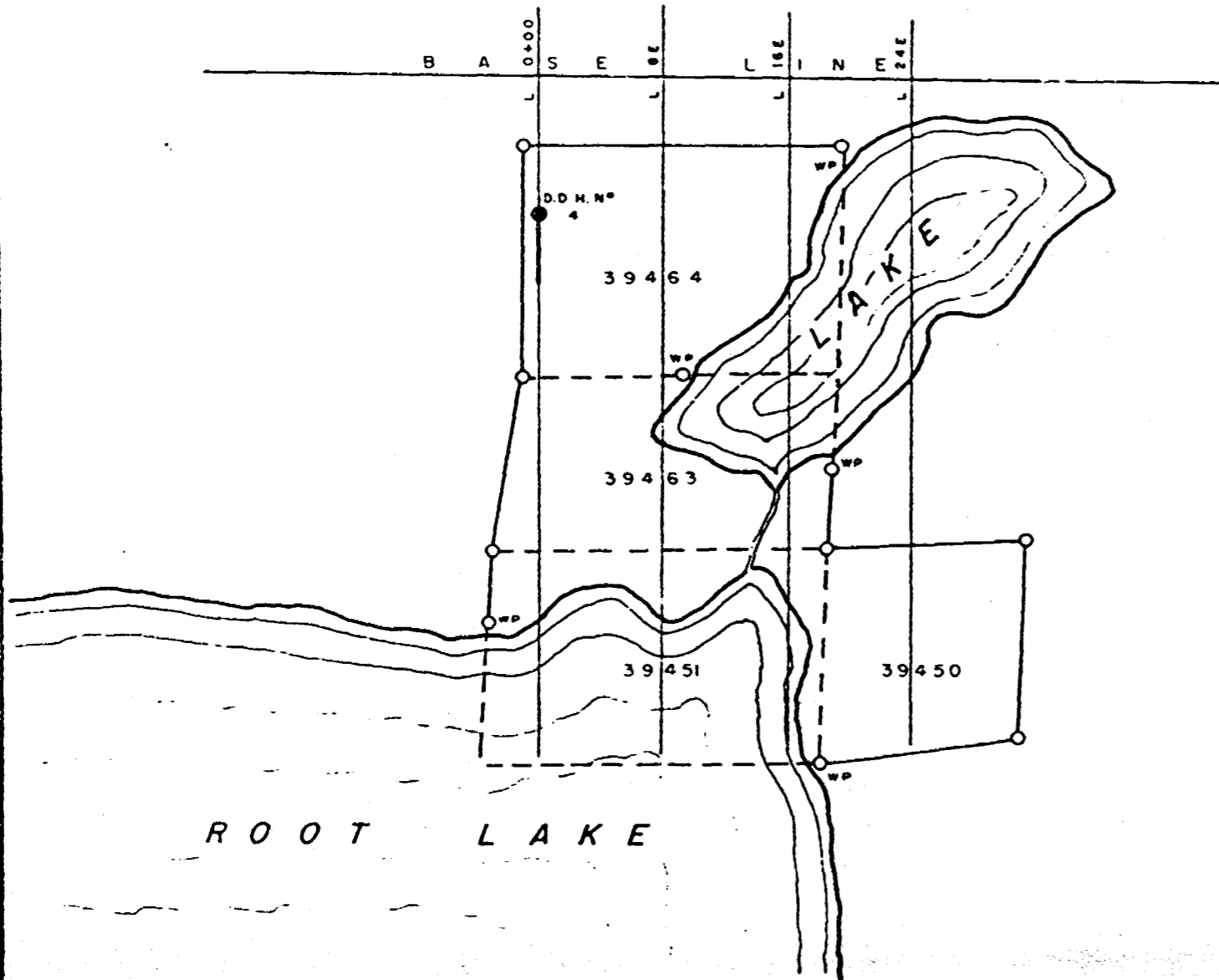
GROUP (2)
(18 CLAIMS)



CAPITAL LITHIUM MINES LTD.
(~~34~~ ³⁴ CLAIM GROUP)
ROOT LAKE AREA (M-2340)
PLAN SHOWING
ASSESSMENT DRILLING
RED LAKE MINING DIVISION-KENORA DIST.
ONTARIO.

SCALE 1" = 1000'

SEPT. 1957.



| DDM NO | DEPTH |
|--------|-------|
| 4 | 551' |
| TOTAL | 551' |



GROUP (3)
(4 CLAIMS)

CAPITAL LITHIUM MINES LTD.
(~~34~~³⁴ CLAIM GROUP)

ROOT LAKE AREA (M-2340)

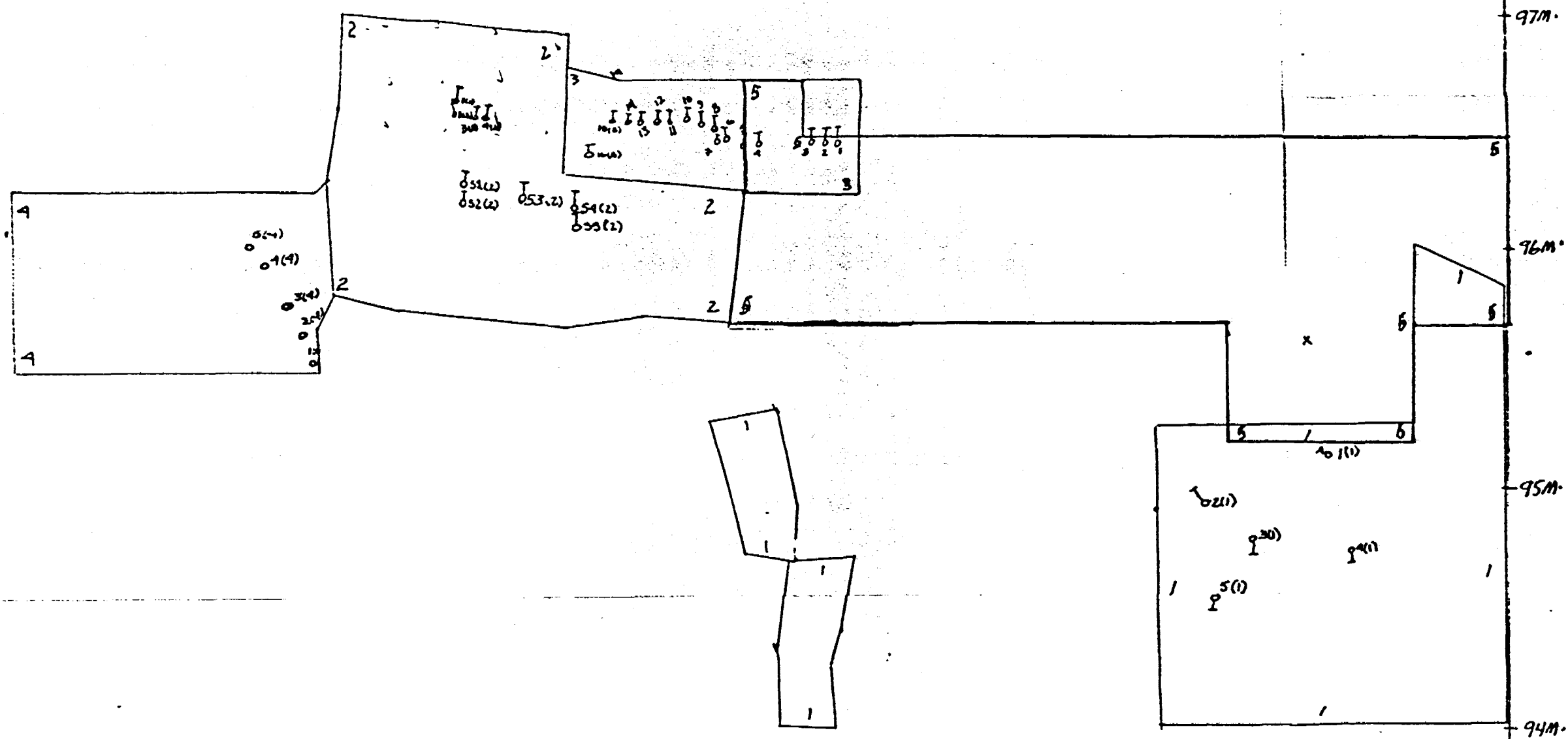
PLAN SHOWING
ASSESSMENT DRILLING

RED LAKE MINING DIVISION - KENORA DIST
ONTARIO

SCALE 1" = 1000'

SEPT. 1957

JWE



ASST. OVERLAY
 ROOT LAKE
 M-2340
 1" = 1/2 mile

RED LAKE MINING DIVISION
 PATRICIA MINING DIVISION

FOR ADDITIONAL
INFORMATION

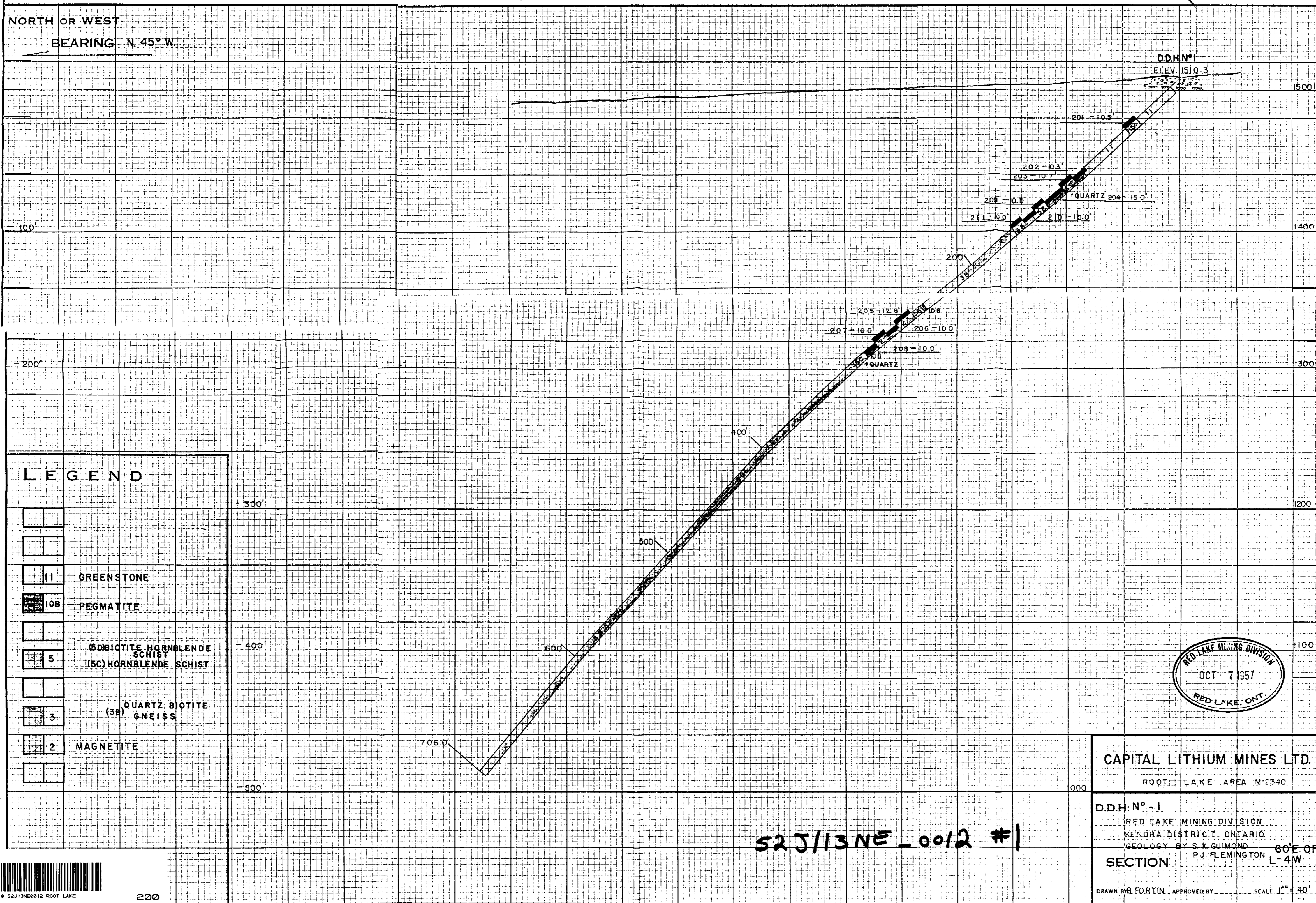
SEE MAPS:

52 J/13 NE-0012 # (1-5)

L-4 W.

D.D.H. N° 1 60° E. OF L-4 W.

1330' S. BL. LINE
60°



LEGEND

| | |
|-----|--|
| 11 | GREENSTONE |
| 10B | PEGMATITE |
| 5 | (5B) BIOTITE HORNBLENDE SCHIST (5C) HORNBLENDE SCHIST |
| 3 | (3B) QUARTZ BIOTITE GNEISS |
| 2 | MAGNETITE |



CAPITAL LITHIUM MINES LTD.
ROOT LAKE AREA M-2340

D.D.H. N° - 1
RED LAKE MINING DIVISION
KENORA DISTRICT, ONTARIO
GEOLOGY BY S. K. GUIMOND
SECTION P. J. FLEMINGTON 60° E. OF L-4 W.

DRAWN BY FORTIN, APPROVED BY _____ SCALE 1" = 40'

525/13NE-0012 #1



KRL 39441

DDH. 2

L-28W

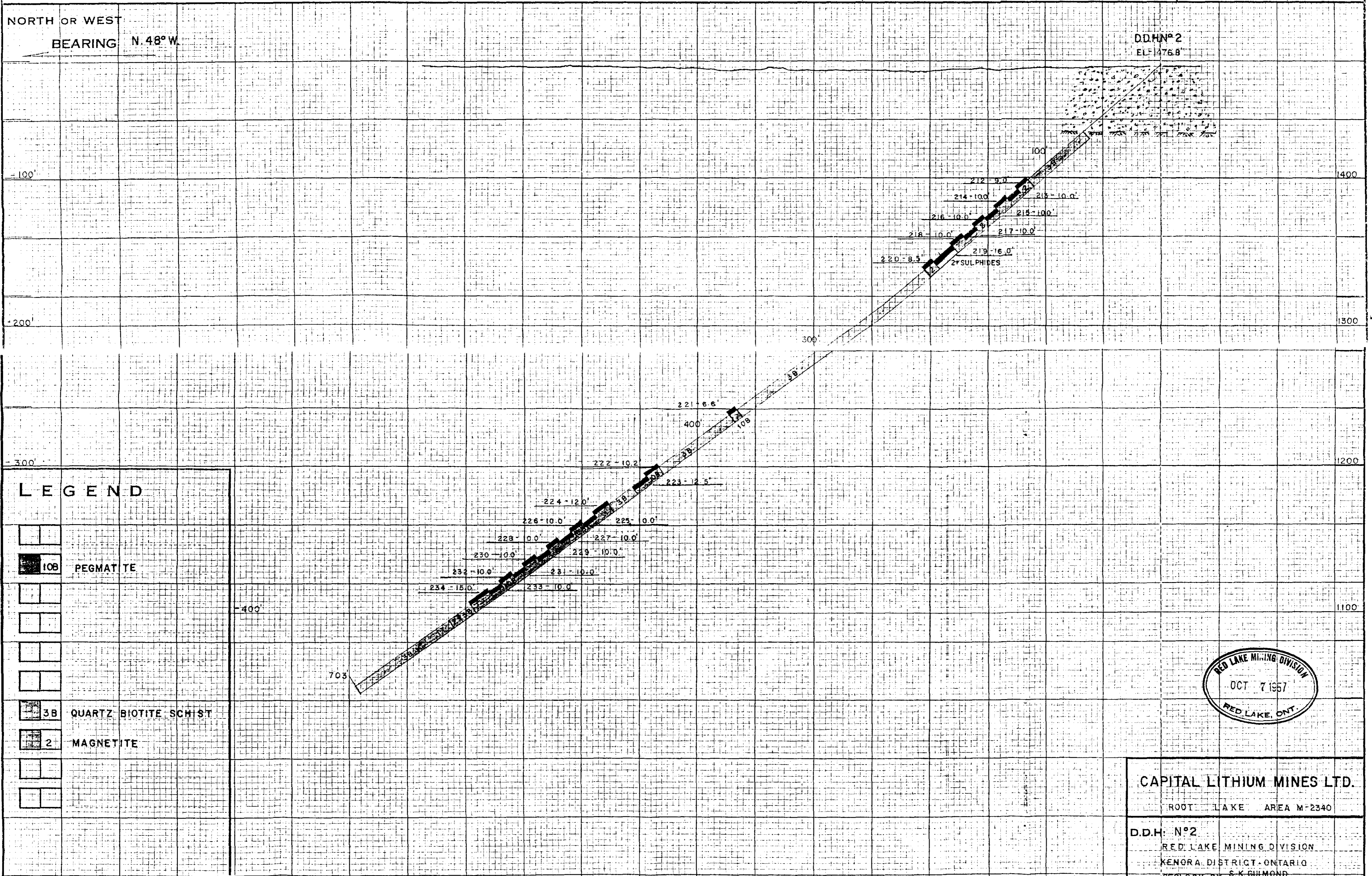
80° N. OF B. LINE

BASE LINE

L-25+80W

NORTH OR WEST
BEARING N. 48° W.

DDH N° 2
EL. 1476.8



| LEGEND | |
|--------|--------------------------|
| | 10B PEGMATITE |
| | 3B QUARTZ BIOTITE SCHIST |
| | 2 MAGNETITE |



CAPITAL LITHIUM MINES LTD.
 ROOT LAKE AREA M-2340
 D.D.H. N° 2
 RED LAKE MINING DIVISION
 KENORA DISTRICT - ONTARIO
 GEOLOGY BY S.K. GUIMOND
 P.J. FLEMINGTON
 SECTION L-25+80W.
 DRAWN BY B. FORTIN APPROVED BY _____ SCALE 1" = 40'



K R L 39445

K R L 39444

D.D.H. N° 3

L-20 W

420' S. OF BASE LINE

LINE CLAIM

NORTH OR WEST BEARING SOUTH

D.D.H. N° 3

EL. 1511.6'

236° 4.0'

236° 4.0'

100'

200'

237° 6.0'

240° 5.0'

19'

QUARTZ

QUARTZ & M.C.

10.5'

238° 12.5'

237° 17.5'

QUARTZ & MICA

497'

LEGEND

S SULPHIDES

IOB PEGMATITE

5 GARNET HORNBLende SCHIST

2 MAGNETITE

IB QUARTZ BIOTITE SCHIST



CAPITAL LITHIUM MINES LTD.

ROOT LAKE AREA M-2340

D.D.H. N° 3

RED LAKE MINING DIVISION

KENORA DISTRICT - ONTARIO

GEOLOGY BY S. K. GUIMOND

P. J. FLEMINGTON

SECTION L-20 W

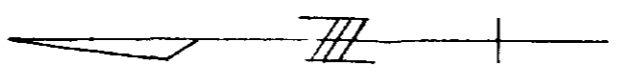
DRAWN BY B. EORTIN APPROVED BY SCALE 1" = 40'



52J13NE010 52J13NE012 ROOT LAKE

220

52 T 13 NE 010 # 2



KRL 39464

D.D.H. N° 4

L 0+00

915 S. OF BASE LINE

NORTH OR WEST BEARING NORTH

D.D.H. N° 4
EL. 1480.1

HORNBLLENDE

248 - 10.0

100°
249 - 9.4

S + QUARTZ

3B

108

36 + HORNBLLENDE

250 - 10.5

251 - 10.0

252 - 10.0

253 - 12.5

300

256 - 8.0

257 - 10.0

258 - 10.0

259 - 10.0

260 - 10.0

261 - 6.0

254 - 10.0

108

551

255 - 11.0

LEGEND

- 10B PEGMATITE
- S SULPHIDES
-
-
-
-
-
-
- 3B QUARTZ BIOTITE GNEISS
- 2 MAGNETITE
- (1B) MICA SCHIST
- 1 QUARTZ BIOTITE SCHIST



CAPITAL LITHIUM MINES LTD.

ROOT LAKE AREA M-2340

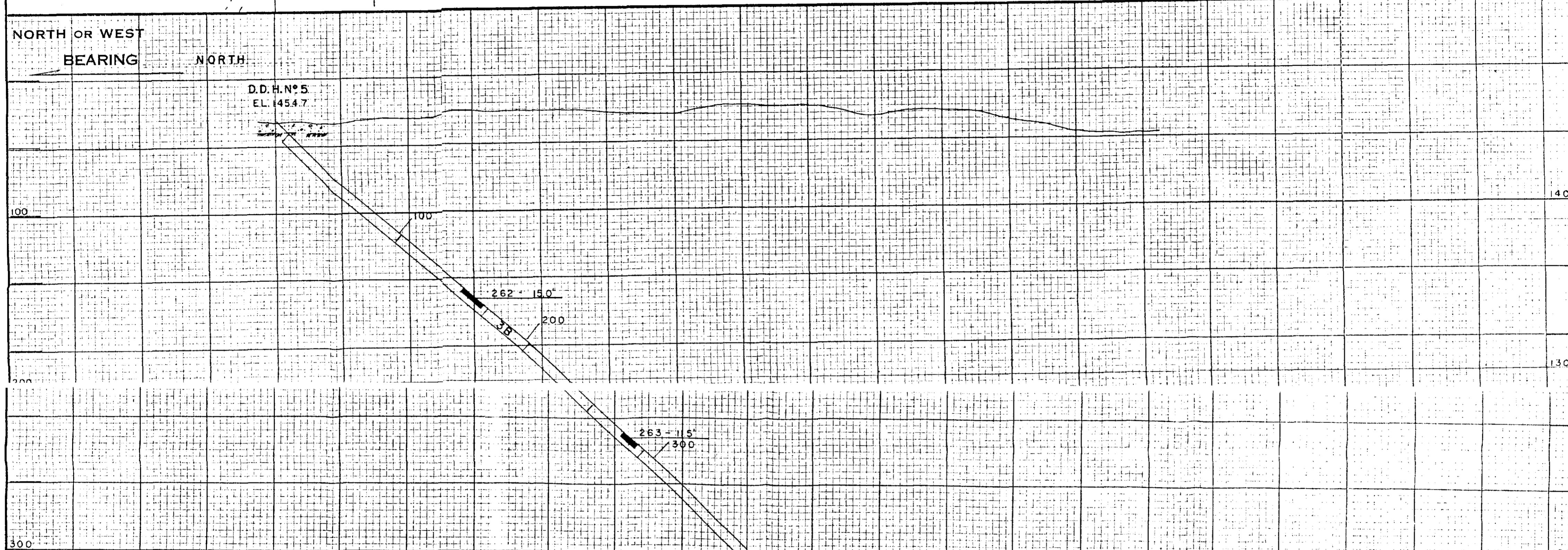
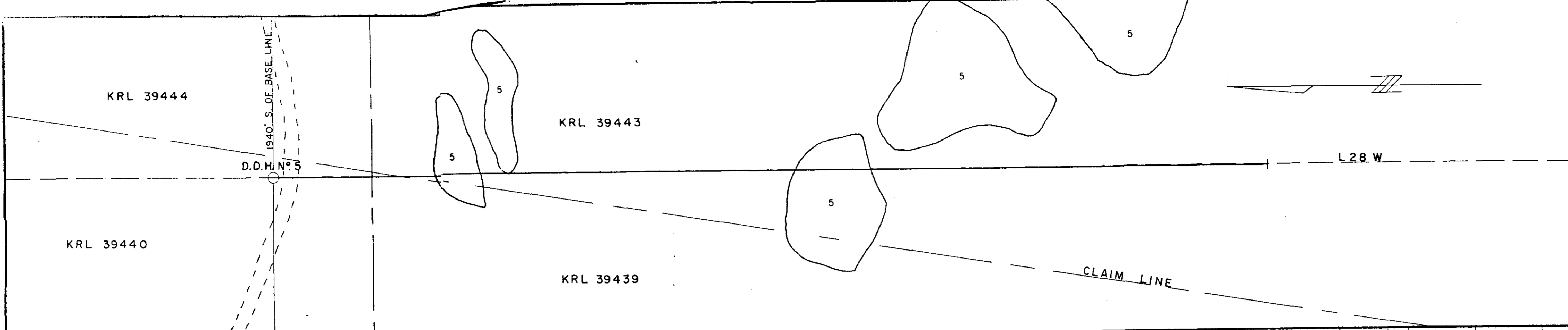
D.D.H. N° 4
 RED LAKE MINING DIVISION
 KENORA DISTRICT - ONTARIO
 GEOLOGY BY S. K. GUIMOND
 SECTION L-0+00

DRAWN BY W.B.M. APPROVED BY SCALE 1" = 40'

52 J/13 NE-0012 #4

52 J/13 NE 0010 #11





| LEGEND | |
|--------|--------------------------|
| | 3B QUARTZ BIOTITE GNEISS |
| | 1 QUARTZ BIOTITE SCHIST |



CAPITAL LITHIUM MINES LTD.
 ROOT LAKE AREA M-2340
 D.D.H. No 5
 RED LAKE MINING DIVISION
 KENORA DISTRICT - ONTARIO
 S.K. GUIMOND
 GEOLOGY BY R. CUNNINGTON
 SECTION L 28 W
 DRAWN BY W.B.M. APPROVED BY _____ SCALE 1" = 40'

