

52K/01SW-0010-C1

LOAD: 16mm

DD 12



52K01SW0018 52K01SW0010C1 WHIPPER LAKE

Diamond Drilling

Area of Whipper Lake

Report N^o 12

Work performed by: S. Smith

Claim N ^o	Hole N ^o	Footage	Date	Note
Pa. 329957	1	110'	May/73	(1)
	2	112½'	June/73	(1)
	3	110'	June/73	(1)

TOTAL: 3 DH
332.5 FT

Notes:

(1) 93/73



THE MINING ACT - DEPARTMENT OF MINES
DIAMOND DRILLING LOG

Start a new page for every new hole, but fill in top portion of form only on first page for each hole.

FILL IN ON EVERY PAGE

HOLE NO 1	PAGE NO 1
--------------	--------------

DRILLING COMPANY: W. Thompson		COLLAR ELEVATION 1 ft.	BEARING OF HOLE FROM TRUE NORTH 20" west	TOTAL FOOTAGE 110	DIP OF HOLE AT collar 45°	LOCATION OF HOLE IN RELATION TO A FIXED POINT ON THE CLAIM Please see Original	MAP REFERENCE NO 2574 map no	CLAIM NO. 329957
DATE HOLE STARTED 21, May 1973	DATE COMPLETED 1, June 1973	DATE LOGGED 14, June/73	LOGGED BY W. Thompson		ft		LOCATION (Twp., Lot, Con. OR Lot. and Long.) WHIPPER LAKE AREA	
EXPLORATION CO. OWNER OR OPTIONEE RAINBOW QUARRY		DATE SUBMITTED 15, June/73	SUBMITTED BY (Signature) W. Thompson		ft		PROPERTY NAME RAINBOW QUARRY	
					ft			

FOOTAGE		ROCK TYPE	DESCRIPTION Colour, grain size, texture, minerals, alteration, etc.	PLANAR FEATURE ANGLE	CORE SPECIMEN FOOTAGE	YOUR SAMPLE NUMBER	SAMPLE FOOTAGE		SAMPLE LENGTH	ASSAYS	
FROM	TO						FROM	TO			
0	24	Casing									
24	30	Mica schist	Grey fine grained some pyrite, stringers of maraposite	79°							
30	40	Maraposite	Jade green fine grained no mineralization, no alteration								
40	52½	Altered maraposite	--- speckled green, course grained some quartz stringers some mineralization of pyrite and chalcopryrite								
52½	75	Andesite	Green fine grained, some pyrite mineralization								
	110	Andesite	Green, fine grained - some pyrite mineralization								
			END OF HOLE								
			THICK MARIPOSITE 8'								
			ALTERED MARIP. 10.5'								

**DUPLICATE COPY
POOR QUALITY ORIGINAL
TO FOLLOW**



THE MINING ACT - MINISTRY OF NATURAL RESOURCES
DIAMOND DRILLING LOG

Start a new page for every new hole, but fill in top portion of form only on first page for each hole.

FILL IN ON EVERY PAGE

HOLE NO. 1 PAGE NO. 1

DRILLING COMPANY W THOMPSON		COLLAR ELEVATION 1 FT	BEARING OF HOLE FROM TRUE NORTH 20° WEST	TOTAL FOOTAGE 110	DIP OF HOLE AT COLLAR 45°	LOCATION OF HOLE IN RELATION TO A FIXED POINT ON THE CLAIM 	MAP REFERENCE NO. 2574 MAP NO	CLAIM NO. 329957
DATE STARTED 1 MAY 73	DATE COMPLETED 1 JUNE 73	DATE LOGGED 14 JUNE 73	LOGGED BY <i>W Thompson</i>				LOCATION (Tp., Lot, Con. OR Lat. and Long.) WHIPPER LAKE AREA	
OPERATION CO., OWNER OR OPTIONEE RAINBOW QUARRY		DATE SUBMITTED 15 JUNE 73	SUBMITTED BY (Signature) <i>W Thompson</i>				PROPERTY NAME RAINBOW QUARRY	

FOOTAGE FROM	TO	ROCK TYPE	DESCRIPTION Colour, grain size, texture, minerals, alteration, etc.	PLANAR FEATURE ANGLE	CORE SPECIMEN FOOTAGE	YOUR SAMPLE NUMBER	SAMPLE FOOTAGE		SAMPLE LENGTH	ASSAYS +	
							FROM	TO			
0	24	CASEING									
24	30	MICA SHIST	GREY FINE GRAINED, SOME PYRITE, STRINGERS OF MARAPOSITE	79°							
30	40	MARAPOSITE	JADE GREEN FINE GRAINED, NO MINERALIZATION, NO ALTERATION								
40	52 1/2	ALTERED MARAPOSITE	SPECKLED GREEN, COARSE GRAINED, SOME QUARTZ STRINGERS SOME MINERALIZATION OF PYRITE AND CHALCOPYRITE								
52 1/2	75	ANDESITE	GREEN FINE GRAINED, SOME PYRITE MINERALIZATION								
75	110	ANDESITE	GREEN, FINE GRAINED - SOME PYRITE MINERALIZATION END OF HOLE								

Thick Maraposite & altered marap. 10-5 ft

For features such as foliation, bedding, schistosity, measured from the long axis of the core.

* Additional credit available. See Assessment Work Regulations.



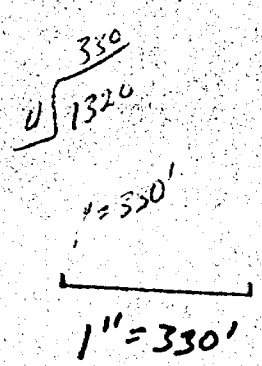
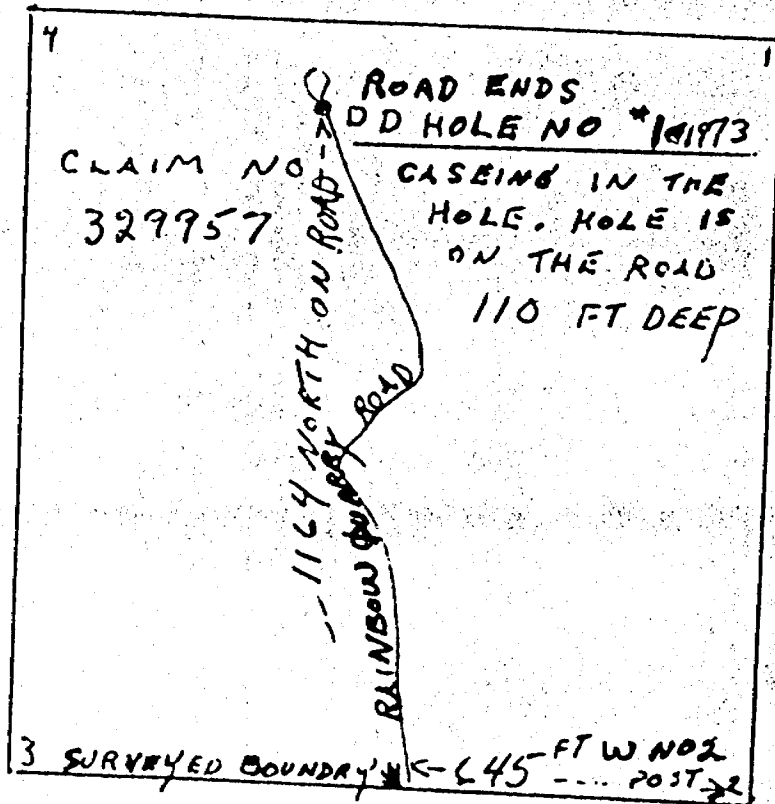
THE MINING ACT - DEPARTMENT OF MINES
DIAMOND DRILLING LOG

Start a new page for every new hole, but fill in top portion of form only on first page for each hole.

FILL IN ON EVERY PAGE HOLE NO. 2 PAGE NO. 1

DRILLING COMPANY W. THOMPSON		COLLAR ELEVATION 1 ft.	BEARING OF HOLE FROM TRUE NORTH	TOTAL FOOTAGE 112½ FT.	DIP OF HOLE AT COLLAR 45	PLEASE SEE ORIGINAL	LOCATION OF HOLE IN RELATION TO A FIXED POINT ON THE CLAIM	MAP REFERENCE NO. 2574 Map No	CLAIM NO. 32-957	
DATE HOLE STARTED June/73	DATE COMPLETED 11, June/73	DATE LOGGED 14, June/73	LOGGED BY W. Thompson		fr		WHIPPER LAKE AREA	LOCATION (Twp., Lot, Con. OR Lat. and Long.)		
EXPLORATION CO. OWNER OR OPTIONEE		DATE SUBMITTED 15, June/73	SUBMITTED BY (Signature) W. Thompson		fr			PROPERTY NAME RAINBOW QUARRY		
RAINBOW QUARRY					fr					

FOOTAGE FROM TO		ROCK TYPE	DESCRIPTION <small>Colour, grain size, texture, minerals, alteration, etc.</small>	PLANAR FEATURE ANGLE	CORE SPECIMEN FOOTAGE	YOUR SAMPLE NUMBER	SAMPLE FOOTAGE FROM TO		SAMPLE LENGTH	ASSAYS	
0	5	Casing									
5	12	Granodiorite	Light grey course grained, altered with carbonate some fine grained, pyrite mineralization								
12	40	Granodiorite	Grey course grained pyrite mineralization								
40	52	Andesite	One ft. quartz vein at 33 to 34 ft, alters at Green, fine grained, sparce pyrite alters								
52	57½	Granodiorite	Grey, course grained, sparce mineralization								
57½	65	andesite	Alters to andesite at 57 ft. 6 inches Green fine grained, sparce pyrite mineral								
65	102	Granodiorite	altered to granodiorite with no blending Grey course grained pyrite mineralization Sparce throughout some small chalcopryrite mineral, some quartz stringers intersected								
102	103½	Andesite	altered at 102 to andesite. Green fine grained alters back to granodiorite								
103½	112½	Granodiorite	Grey course grained, pyrite mineralization some quartz stringers								
HOLE ENDS											
CORE STORED AT HUSKY SERVICE STATION HUDSON, ONTARIO											
DUPLICATE COPY POOR QUALITY ORIGINAL TO FOLLOW											



RAINBOW QUARRY
 D D HOLE # 1873
 15 June Thompson



THE MINING ACT - MINISTRY OF NATURAL RESOURCES
DIAMOND DRILLING LOG

Start a new page for every new hole, but fill in top portion of form only on first page for each hole.

FILL IN ON EVERY PAGE
HOLE NO. 2 PAGE NO. 1

DRILLING COMPANY W THOMPSON		COLLAR ELEVATION 1 FT	BEARING OF HOLE FROM TRUE NORTH	TOTAL FOOTAGE 112 1/2 FT	DIP OF HOLE AT COLLAR 45	LOCATION OF HOLE IN RELATION TO A FIXED POINT ON THE CLAIM	MAP REFERENCE NO. 2574 MAP NO 329957	CLAIM NO. 329957
DATE HOLE STARTED JUNE 73	DATE COMPLETED 11 JUNE 73	DATE LOGGED 14 JUNE 73	LOGGED BY W THOMPSON				LOCATION (Tp., Lot, Con. OR Lat. and Long.)	
OPERATION CO. OWNER OR OPTIONEE		DATE SUBMITTED 15 JUNE 73	SUBMITTED BY (Signature) <i>W Thompson</i>				PROPERTY NAME WHIPPER LAKE AREA RAINBOW QUARRY	

FROM	TO	ROCK TYPE	DESCRIPTION Colour, grain size, texture, minerals, alteration, etc.	PLANAR FEATURE ANGLE	CORE SPECIMEN FOOTAGE	YOUR SAMPLE NUMBER	SAMPLE FOOTAGE		SAMPLE LENGTH	ASSAYS	
							FROM	TO			
0	5	CASEING									
5	12	GRANODIORITE	LIGHT GREY COURSE GRAINED, ALTERED WITH CARBONATE SOME FINE GRAINED, PYRITE MINERALIZATION								
12	40	GRANODIORITE	GREY, COURSE GRAINED, PYRITE MINERALIZATION ONE FT QUARTZ VENEER AT 33 TO 34 FT, ALTERS AT								
40	52	ANDESITE	GREEN, FINE GRAINED, SPARSE PYRITE ALTERS								
52	57 1/2	GRANODIORITE	GREY COURSE GRAINED, SPARSE MINERALIZATION ALTERS TO ANDESITE AT 57 FT 6 INCHES								
57 1/2	65	ANDESITE	GREEN FINE GRAINED, SPARSE PYRITE MINERAL ALTERS TO GRANODIORITE WITH NO BLENDING								
65	102	GRANODIORITE	GREY COURSE GRAINED, PYRITE MINERALIZATION SPARSE THROUGHOUT, SOME SMALL CHALCOPYRITE MINERAL, SOME QUARTZ STRINGERS INTERSECTED ALTERS AT 102 TO ANDESITE								
102	103 1/2	ANDESITE	GREEN FINE GRAINED ALTERS BACK TO GRANODIORITE								
103	112 1/2	GRANODIORITE	GREY COURSE GRAINED, PYRITE MINERALIZATION SOME QUARTZ STRINGERS, HOLE ENDS								

CORE STORED AT HUSKY SERVICE STATION HUDSON ONT



THE MINING ACT - DEPARTMENT OF MINES
DIAMOND DRILLING LOG

Start a new page for every new hole, but fill in top portion of form only on first page for each hole.

FILL IN ON EVERY PAGE
HOLE NO. 3 PAGE NO. 1

DRILLING COMPANY W. THOMPSON		COLLAR ELEVATION 1	BEARING OF HOLE FROM TRUE NORTH 10°W of N	TOTAL FOOTAGE 110	DIP OF HOLE AT collar 45°	LOCATION OF HOLE IN RELATION TO A FIXED POINT ON THE CLAIM 321 Ft. west of No.1 post claim no Pa. 329957 collar 17 ft. south of line drilling 10° west of north	MAP REFERENCE NO. 2574	CLAIM NO. Pa. 329957
DATE HOLE STARTED 24, July/73	DATE COMPLETED 7, July/73	DATE LOGGED 7, July/73	LOGGED BY W. Thompson				LOCATION (T.p., Lot, Con. OR Lot. and Long.) WHIPPER LAKE AREA	
EXPLORATION CO. OWNER OR OPTIONEE THOMPSON DIAMOND DRILL		DATE SUBMITTED 9, July/73	SUBMITTED BY (Signature) W. THOMPSON				PROPERTY NAME RAINBOW QUARRY	

FOOTAGE		ROCK TYPE	DESCRIPTION Colour, grain size, texture, minerals, alteration, etc.	PLANAR FEATURE ANGLE	CORE SPECIMEN FOOTAGE	YOUR SAMPLE NUMBER	SAMPLE FOOTAGE		SAMPLE LENGTH	ASSAYS	
FROM	TO						FROM	TO			
0	6	Casing									
6	29	Mica schist	Light grey, fine grained, schisted with quartzite stringers of 1/8" size to 1/4" size, giving a banded appearance disseminated mineralization sparce but consistant. Minerals are pyrite, marcasite and some chalcopryrite in small amounts.								
29	31	Quartz	White, fine grained well mineralized with pyrite chalcopryrite, pyrrhotite.								
31	44	Mica schist	Light grey, fine grained, altered with quartzite stringers giving a banded appearance the quartzite has a greenish tint, some mineral of pyrite								
44	48		Lost core "sludge indicates mica"								
48	62		Light grey fine grained schist with quartzite stringers of a greenish tint disseminated sparce mineralization of pyrite chalcopryrite pyrrhotite. Alters								
62	100	Andesite	Grey green fine grained disseminated sparce mineralization of pyrite, chalcopryrite pyrrhotite quartz stringers of 1 inch size at 81' and 83'								
100	110	Andesite	Grey green fine grained sparce mineralization of pyrite, chalcopryrite pyrrhotite 3 inch quartz stringer at 101 ft.								
			HOLE ENDS								

DUPLICATE COPY
POOR QUALITY ORIGINAL
TO FOLLOW



DIAMOND DRILLING LOG

Start a new page for every new hole, but fill in top portion of form only on first page for each hole.

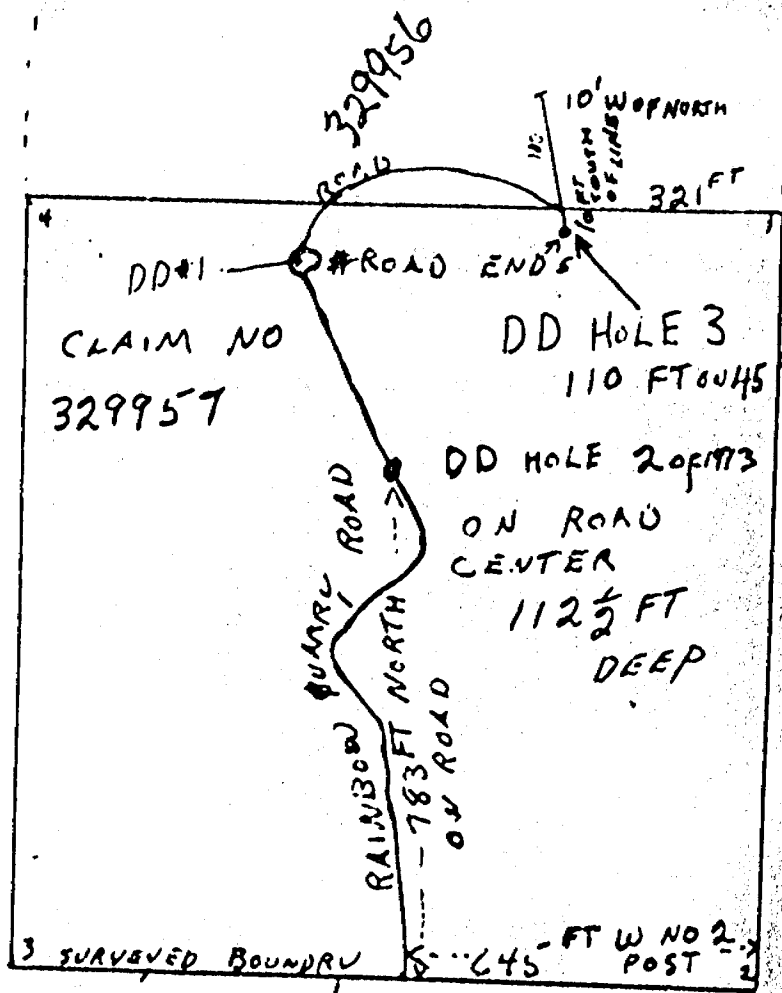
FILL IN ON EVERY PAGE

HOLE NO. 3 PAGE NO. 1 of 1

DRILLING COMPANY W THOMPSON		COLLAR ELEVATION 1	BEARING OF HOLE FROM TRUE NORTH 10° WEST OF N	TOTAL FOOTAGE 110	DIP OF HOLE AT COLLAR 45°	LOCATION OF HOLE IN RELATION TO A FIXED POINT ON THE CLAIM 321 FT WEST OF NO 1 POST CLAIM NO P.A. 329957	MAP REFERENCE NO. 2574	CLAIM NO. PA 329957
DATE HOLE STARTED 24 JUNE 73	DATE COMPLETED 7 JULY 73	DATE LOGGED 7 JULY 73	LOGGED BY W THOMPSON					
EXPLORATION CO. OWNER OR OPTIONEE THOMPSON DIAMOND DRILL		DATE SUBMITTED 9 JULY 73	SUBMITTED BY (Signature) <i>W Thompson</i>			LOCATION (T.p., Lat., Con. OR Lat. and Long.) WHIPPER LAKE AREA		PROPERTY NAME RAINBOW QUARRY

FOOTAGE		ROCK TYPE	DESCRIPTION	PLANAR FEATURE ANGLE	CORE SPECIMEN FOOTAGE	YOUR SAMPLE NUMBER	SAMPLE FOOTAGE		SAMPLE LENGTH	ASSAYS
FROM	TO		Colour, grain size, texture, minerals, alteration, etc.				FROM	TO		
0	6	CASEING								
6	29	MICA SHIST	LIGHT GREY, FINE GRAINED, SHISTED WITH QUARTZITE STRINGERS OF 1/8" SIZE TO 1/2" SIZE, GIVING A BANDED APPEARANCE. DISSIMINATED MINERALIZATION SPARSE BUT CONSISTANT. MINERALS ARE PYRITE, MARCASITE, AND SOME CHALCOPYRITE IN SMALL AMOUNTS.							
29	31	QUARTZ	WHITE, FINE GRAINED WELL MINERALIZED WITH PYRITE, CHALCOPYRITE, PYRRHOTITE							
31	44	MICA SHIST	LIGHT GREY, FINE GRAINED, ALTERED WITH QUARTZITE STRINGERS GIVING A BANDED APPEARANCE. THE QUARTZITE HAS A GREENISH GREENISH TINT. SOME MINERAL PYRITE.							
44	48		LOST CORE "SLUDGE INDIKATES MICA"							
48	62	MICA SHIST	LIGHT GREY FINE GRAINED SHIST WITH QUARTZITE STRINGERS OF A GREENISH TINT DISSIMINATED SPARSE MINERALIZATION OF PYRITE CHALCOPYRITE PYRRHOTITE. ALTERS							
62	100	ANDESITE	GREY GREEN, FINE GRAINED DISSIMINATED SPARSE MINERALIZATION OF PYRITE, CHALCOPYRITE, PYRRHOTITE. QUARTZ STRINGERS OF LINCX SIZE AT 81 AND 83 FT.							
100	110	ANDESITE	GREY GREEN FINE GRAINED SPARSE MINERALIZATION OF PYRITE, CHALCOPYRITE, PYRRHOTITE. 3 INCH QUARTZ STRINGER AT 101 FT. HOLE ENDS							

* For features such as foliation, bedding, schistosity, measured from the long axis of the core.



RAINBOW QUARRY
 D D HOLE 2 1973
 SKETCH BY
 15 June [Signature]



52K01SW0018 52K01SW0010C1 WHIPPER LAKE

JUL 26 1973

900



WHIPPER LAKE

M-2574

A separate form is required for each type of work to be recorded.

#93

REGIONAL OFFICE, KENORA

THE MINING ACT REPORT OF WORK

To the Recorder of PATRICIA Mining Division

I, STEPHEN C.O. SMITH 3-3045

name of Recorded Holder Miner's Licence

STE 907 21 CLAYTON DRIVE, WINNIPEG 8, MAN.

do hereby report the performance of 332 days of DIAMOND DRILL

not before reported to be applied on the following contiguous claims

Claim No.	Days	Claim No.	Days	Claim No.	Days
Pa. 329956	- 166				
329957	- 166				

All the work was performed on Mining Claim (s) Pa. 329956 + 329957
(In the case of geological and/or geophysical survey (s) where more than 18 claims are involved attach a schedule)

READ CAREFULLY: THE FOLLOWING INFORMATION IS REQUIRED BY THE MINING RECORDER.

- For Manual Work, Stripping or Opening up of Mines, Sinking Shafts or Other Actual Mining Operations - Names and addresses of the men who performed the work and the dates and hours of their employment.
- For Diamond and other Core Drilling - Footage, No. and angle of holes and diameter of core. Name and address of owner or operator of drill. Dates when drilling was done. Signed core log and sketch in duplicate.
- For Compressed Air or Other Power Driven or Mechanical Equipment
- Type of drill or equipment. Names and addresses of men engaged in operating equipment and the dates and hours of their employment.
- For Power Stripping - Type of equipment. Name and address of owner or operator. Amount expended. Dates on which work was done. Proof of actual cost must be submitted within 30 days of recording.
- With each of the above types of work sketches are required to show the location and extent of the work in relation to the nearest claim post. In the case of diamond or other core drilling the sketch must be submitted in duplicate.
- For Geological and Geophysical Survey - The names and addresses of men employed as well as dates. Type of instrument used in the case of geophysical survey. Reports and maps in duplicate must be filed with the Minister within 60 days of recording.
- For Land Survey - the name and address of Ontario Land surveyor.

The Required Information is as Follows: (Attach a list if this space is insufficient)

<u>D.D.HOLE</u>	<u>DEPTH</u>	<u>CLAIM</u>	<u>DATES DRILLED.</u>
# 1-73	110	329957	MAY 21 - JUNE 1/73
# 2-73	112	329957	JUNE 3 - JUNE 11/73
# 3-73	110	329956-57	JUNE 24 - JULY 7/73
	<u>332'</u>		

Date 15 June 1973

Walter M. Thompson
Signature of Recorded Holder or Agent

The Mining Act Certificate Verifying Report of Work

I, Walter M. Thompson
James Lambert
(Post Office Address)

hereby certify:

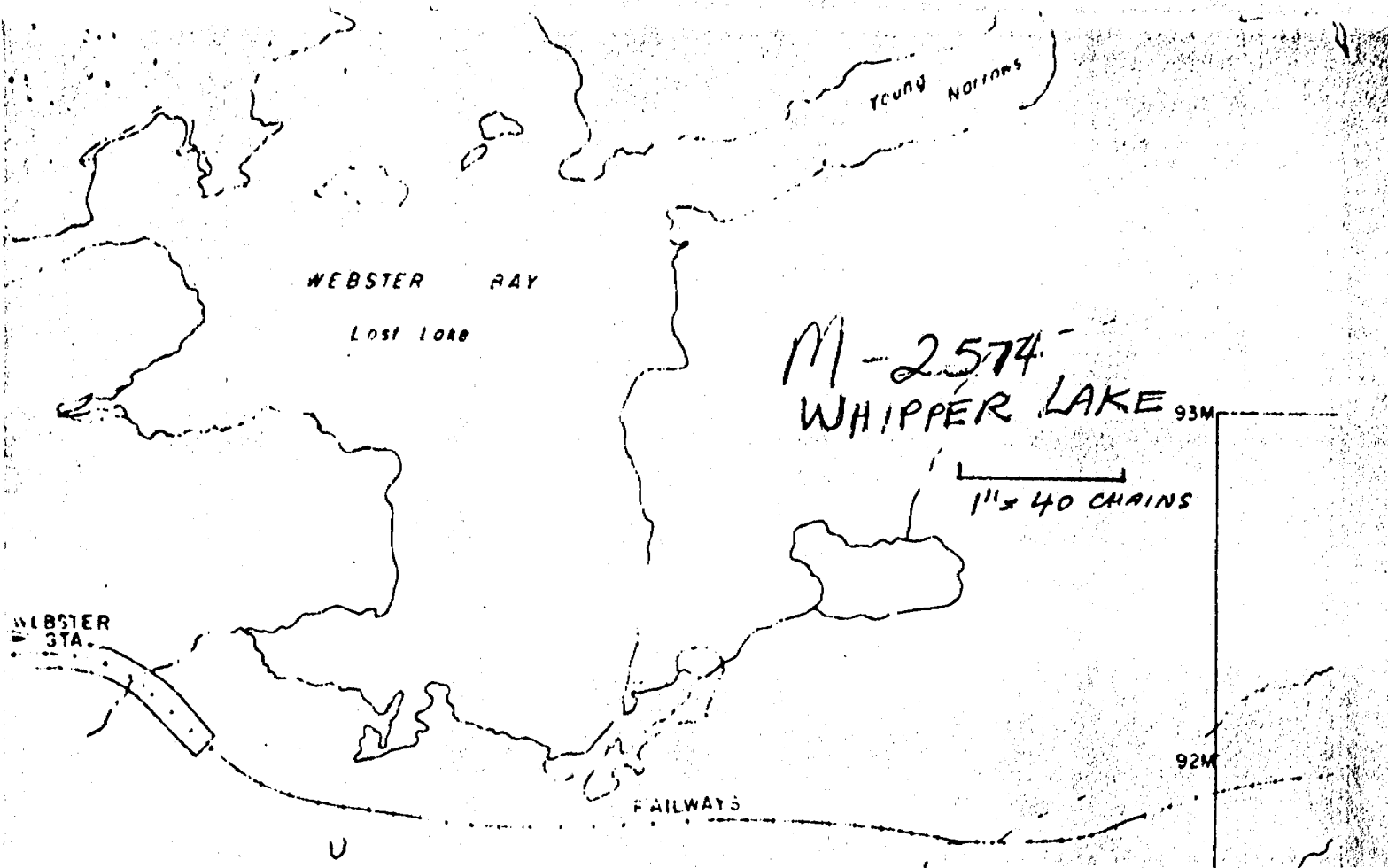
- That I have a personal and intimate knowledge of the facts set forth in the report of work annexed hereto, having performed the work or witnessed some during and/or after its completion.
- That the annexed report is true.

Dated 9 July 19 73

PATRICIA MINING DIV.
RECEIVED
JUL - 9 1973
AM 7:00 PM 4:58

Walter M. Thompson
Signature
Pa 329956

THE PENALTY FOR MAKING A FALSE STATEMENT IN THIS REPORT AND/OR CERTIFICATE IS \$500. OR SIX MONTHS IMPRISONMENT OR BOTH



STEPHEN C. O. Smith
 APPLYING FOR LEASE
 FROM CROWN
 329956-57

3260A
 336021

329957

356737	PA	329956	PA 28506	PA 28503
338750	PA	329957	PA 25505	PA 25504
338751	PA	338001	339002	309000
356191	PA	338004	338008	309000

