

DIAMOND DRILLING



010

AREA: Slate Lake

REPORT No.: 17

WORK PERFORMED BY: Sulpetro Minerals Ltd.

<u>CLAIM No.</u>	<u>HOLE No.</u>	<u>FOOTAGE</u>	<u>DATE</u>	<u>NOTE</u>
KRL 483665	3191-3-81	131.0 m	Sept/81	(1)

NOTES: (1) #161-81

PROPERTY Slate Lake	TP OR AREA Slate Lake	AZIMUTH Grid N (337°)	DATE STARTED Sept. 2, 1981	CORRECTED DIP TESTS				LOCATION SKETCH OF HOLE
PROJECT 3191	LOT & CONC.	DIP -60°	DATE COMPLETED Sept. 4, 1981					
CLAIM NO. 483665	CO-ORDINATES. LO 3+20N	LENGTH 131m	DRILLED BY St. Lambert					
GRID NO. 7		COLLAR ELEV.	LOGGED BY N.W. Rayner					

METRES		SECTION	DESCRIPTION	SAMPLE NO.	FROM	TO	LENGTH	ASSAYS					
FROM	TO												
0	13.1		OBJECTIVES:- to test H.L.E.M. anomaly in Panama Lake										
0	13.1		Casing - sand and boulders										
13.1	38.0		Mafic tuff - dk. green, felty chloritic texture, scattered blue quartz eyes minor quartz carbonate veining even grained good foliation										
			Alteration - chloritic										
			Structure - C.A. - 55°										
			Mineralization - nil										
38.0	45.55		Mafic tuff - massive less chloritic than the above section no quartz eyes. this unit may be a flow										
			Alteration - carbonate, numerous hairlike stringers of carbonate										
			Structure - C.A. - 55°										
			Mineralization - nil										
45.55	52.75		Graphitic cherty argillite - black to dk. grey laminated black argillite with grey chert at 45.9 - 5mm green chloritic layers with diss. magnetite										
			Alteration - carbonate veinlets										
			Structure - C.A. - 55° with bedding										

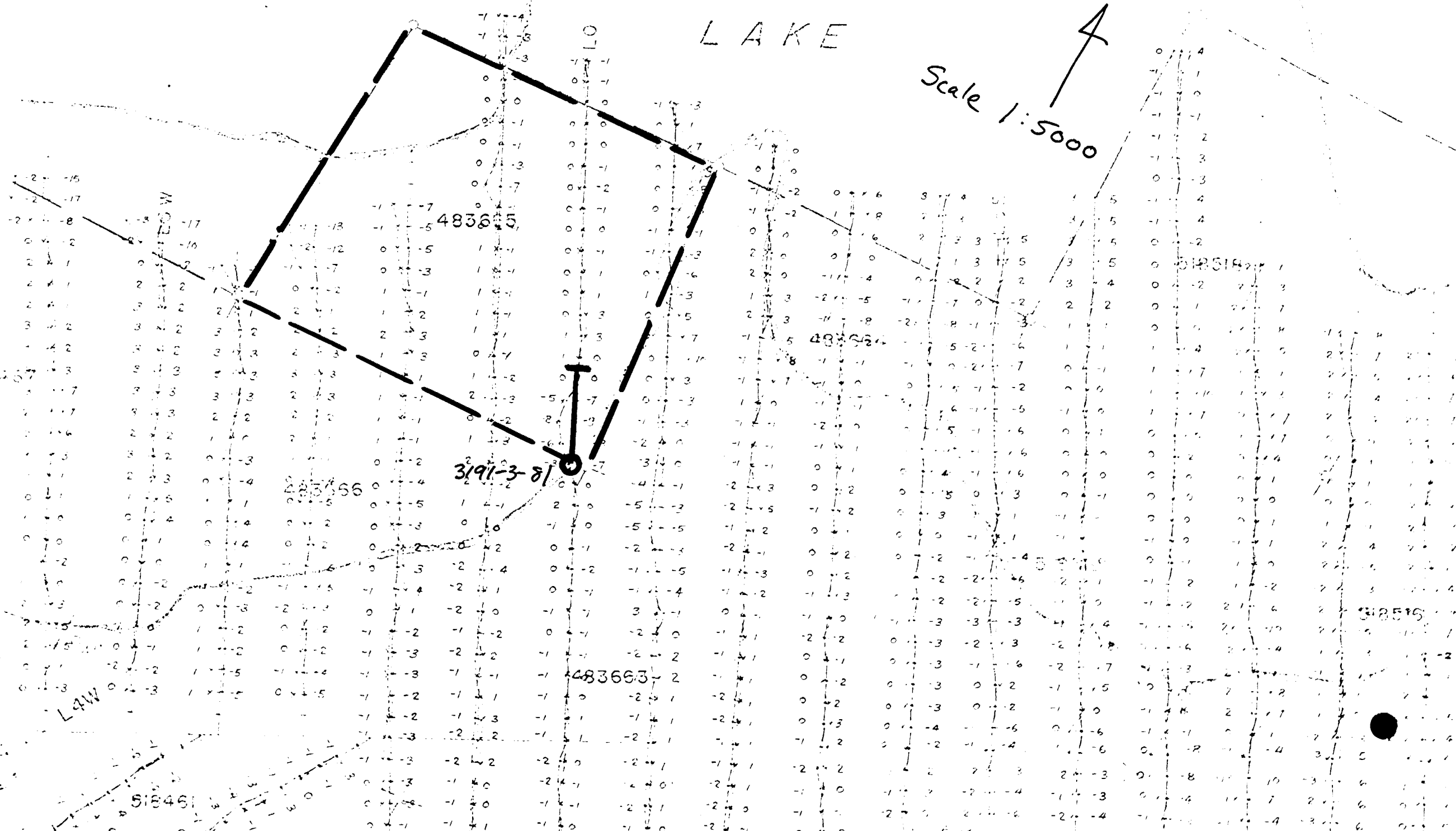
N.W. Rayner

PANAMA

LAKE



Scale 1:5000



Uchi Lake Area & Earngey Twp. (M-2157)

