



52L07NE0005 24 REX LAKE

010

DIAMOND DRILLING

AREA: REX LAKE

REPORT NO: 24

WORK PERFORMED FOR: Platinum Exploration Canada Inc.

RECORDED HOLDER: Same as Above [xx]
: Other []

<u>Claim No.</u>	<u>Hole No.</u>	<u>Footage</u>	<u>Date</u>	<u>Note</u>
K 888300	RX-87-1	160'	Oct/87	(1)
	RX-87-2	144'	Oct/87	(1)
K 888297	RX-87-3	162'	Oct/87	(1)
K 912427	RX-87-4	134'	Oct/87	(1)

540'

NOTES: (1) #226-87, filed Mar/88

EXPLORATION CO., OWNER OR OPTIONEE: Platinum Exploration Canada Inc. DRILLING CO: Ultramobile

CLAIM NO: K 888300

Footage (m)		Rock Type	Description colour, grain size, texture, minerals, alteration, etc.	Core Specimen (ft/m)	Sample			Assays							
From	To				Sample No.	From (ft)	To (ft)	Length (ft)	Pt (ppb)	Pd (ppb)	Au (ppb)	Cu (ppm)	Ni (ppm)	Cr (ppm)	
111	116		Sulfide Zone: po over py - minor cp up to 40% of rock; very silicious originally a biotite gneiss that has undergone brittle shearing, silicification and pyritization (now po).		021	111	113	2							
					022	113	114	1							
					023	114	116	2							
116	117		K-fels, Qtz, Plag pegmatoidal segregation relatively bare of sulfides (<1%).		024	116	117	1							
117	118.5		Sulfide Zone; similar to 111-116.		025	117	118.5	1.5							
118.5	122.6		Qtz - Microcline anatextic segregation qtz 70%, microcline pink to clear 20% coarse grained sulfides up to 10% minor bt.		026	118.5	120	1.5							
					027	120	121	1							
					028	121	122.6	1.6							
122.6	124.2		Biotite Gneiss: fine grained, finely laminated, streaks of py + po, parallel to foliation (50° TCA) up to 5%.		029	122.6	124.2	1.6							
124.2	126		Sulfide Breccia; rounded clasts floating in po + py (po ~65%, py 10%), qtz 20%, feldspar 5%.		030	124.2	126	1.8							
126	129		Qtz - microcline pegmatoid, first foot has 10% coarse grained sulfides (py).		031	126	127	1							
					032	127	129	2							
129	130.5		Qtz, microcline, biotite granitoidal segregations. Coarse grained and slightly brecciated, contains up to 15% sulfides py/po/cp.		033	129	130	1							
130.5	131		Qtz/K-fels segregation <1% sulfides.		034	130	131	1							

EXPLORATION CO., OWNER OR OPTIONEE: Platinum Exploration Canada Inc.

DRILLING CO: Ultramobile

CLAIM NO: K888300

Footage (m) From	Rock Type To	Description colour, grain size, texture, minerals, alteration, etc.	Core Specimen (ft/m)	Sample				Assays				
				Sample No.	From (ft)	To (ft)	Length (ft)	Pt (ppb)	Pd (ppb)	Au (ppb)	Cu (ppm)	Ni (ppm)
131	141	Biotite Gneiss; foliation at 50° TCA few small segregations of felsic pegmatoid clump of massive py at 132.6; overall 5-10% sulfide, py/po/minor cp.	035	131	133	2						
			036	133	135	2						
			037	135	137	2						
			038	137	139	2						
			039	139	141	2						
141	144	Medium grained qtz/feldspar/bt gneiss 4% sulfides.	040	141	144	3						
144	160	Biotite Gneiss; lit-par-lit. overall <1% sulfides.	041	144	146	2						
			042	146	150	4						
			043	150	155	5						
			044	155	160	5						

EOH 160'

Fred W. Smith

EXPLORATION CO., OWNER OR OPTIONEE: Platinum Exploration Canada Inc.

DRILLING CO: Ultramobile

CLAIM NO: K 888300

Footage (m)		Rock Type	Description colour, grain size, texture, minerals, alteration, etc.	Core Specimen (ft/m)	Sample			Assays					
From	To				Sample No.	From (ft)	To (ft)	Length (ft)	Pt (ppb)	Pd (ppb)	Au (ppb)	Cu (ppm)	Ni (ppm)
80	87		Coarse grained Biotite, Qtz, Microcline granitoid; large brown flake of bt, lacks foliation.	060	80	85	5						
87	110		Sulfide Zone: Qtz, Feldspar, Pegmatoid generally less than 10% bt except for 3" at 95.3' and 96.5 - 97.7 where fine grained chlorite after bt composes up to 80% of the rock. - chlorite + bt rich horizon at 105 - 110' - zone appears to have undergone brittle deformation with sulfides py over po minor cp rehealing rock; probably silification accompanied pyritization. Less po than hole one, possibly more cp.	061 062 063 064 065 066 067 068 069 070 071	85 90 92 94 95.5 97.5 99 101 103 105 107	90 92 94 95.5 97.5 99 101 103 105 107	5 2 2 1.5 2 1.5 2 2 2 2 2						
110	117.5		Qtz - Microcline Pegmatoid; very coarse grained <1% sulfides, last foot almost pure quartz.	072 073 074 075	109 111 113 115	111 113 115 117.5	2 2 2 2.5						
117.5	123.7		Medium grained Qtz - microcline granitoid segregation, 10% chlorite, non foliated 1-2% sulfides.	076 077	117.5 121	121 123.7	3.5 2.7						
123.7	124.2		Biotite Gneiss - minor sulfides.	078	123.7	124.2	0.5						
124.2	126.5		Same as 117.5 - 123.7.	079	124.2	126.5	2.3						
126.5	137.5		Qtz - Feldspar segregation, medium to coarse grained white with <10% bt (1 mm) last 6" pure bull Qtz.	080 081 082	126.5 130 134	130 134 137.5	3.5 4 3.5						

EXPLORATION CO., OWNER OR OPTIONEE: Platinum Exploration Canada Inc.

DRILLING CO: Ultramobile

CLAIM NO: K888300

Footage (m) From	Rock Type To	Description colour, grain size, texture, minerals, alteration, etc.	Core Specimen (ft/m)	Sample			Assays							
				Sample No.	From (ft)	To (ft)	Length (ft)	Pt (ppb)	Pd (ppb)	Au (ppb)	Cu (ppm)	Ni (ppm)	Cr (ppm)	
137.5	144	Coarse grained Qtz - Microcline Pegmatoid 60 - 70% qtz, microcline 25-35%.		083	137.5	140	2.5							
144	EOH	bt - 0 to 10%, minor sulfides.		084	140	144	4							

find settings

DIAMOND DRILL LOG

Drill Hole Survey Data

PROPERTY NAME: Rex Lake
 HOLE NO: RX-87-3
 TOTAL FOOTAGE: 162 Feet
 LOCATION/TOWNSHIP:
 GRID 'A' COLLAR CO-ORDINATES: Main Grid
 COLLAR ELEVATION: 0 + 18S; 2 + 50E

metres dip azimuth
 0 -50° 185°

B.G CORE

DATE STARTED: October 16, 1987
 DATE COMPLETED: October 18, 1987
 DATE LOGGED: October 20, 1987
 LOGGED BY: Fred Gittings
 SUBMITTED BY:

EXPLORATION CO., OWNER OR OPTIONEE: Platinum Exploration Canada Inc. DRILLING CO: Ultramobile CLAIM NO: K888297

From	To	Rock Type	Description colour, grain size, texture, minerals, alteration, etc.	Core Specimen (ft/m)	Sample			Assays							
					Sample No.	From (ft)	To (ft)	Length (ft)	Pt (ppb)	Pd (ppb)	Au (ppb)	Ni (ppm)	Cu (ppm)	Cr (ppm)	
0	30		<u>OVERBURDEN</u>												
30	68		Garnetiferous Biotite Gneiss; fairly well foliated at 45° TCA; medium to coarse grained qtz microcline segregations as follows: 42.3 - 42.6 44 - 46 47.5 - 50.5 52.7 - 54.0 54.8 - 55.1 58.8 - 59.0 64 - 65 42.6 to 44; fine grained silified rock 66 to 68 chlorite replacing bt in part; 1-3% sulfide mostly py trace cp, parallel to foliation but some disseminated clumps.		085	30	35	5							
					086	35	40	5							
					087	40	45	5							
					088	45	50	5							
					089	50	55	5							
					090	55	60	5							
					091	60	65	5							
					092	65	67	5							
66	75.5		Pink Microcline bearing segregation: 70.5 - 2" wide bt/chl/sulfide zone 73.5 sulfide (py) over 1', chl alteration along fractures		093	67	69	2							
					094	69	72	3							
					095	72	75.5	3.5							

EXPLORATION CO., OWNER OR OPTIONEE: Platinum Exploration Canada Inc. DRILLING CO: Ultramobile

CLAIM NO: K 888297

Footage (m) From	Rock Type To	Description colour, grain size, texture, minerals, alteration, etc.	Core Specimen (ft/m)	Sample			Assays							
				Sample No.	From (ft)	To (ft)	Length (ft)	Pt (ppb)	Pd (ppb)	Au (ppb)	Cu (ppm)	Ni (ppm)	Cr (ppm)	
75.5	77.5	Graphite bearing altered rock; brick orange K-fels medium grained averages 50%: graphite 15%, py + minor cp 10-20% qtz 10-15% - 80-90% graphite over 2" at 76.5		096	75.5	77.5	2							
77.5	82.5	Qtz - feldspar segregation; 77.5 graphite content and alteration decrease - 6" graphite, biotite rich zone at 81.0 sulfides 10%		097 098	77.5 80	80 82.5	2.5 2.5							
82.5	85	Hornfels; very fine grained grey rock, very hard, competent with .5 - 1 mm garnets.		099	82.5	85	2.5							
85	86.7	Medium to coarsed grained microcline qtz segregation, trace py.		100	85	86.7	1.7							
86.7	106	Biotite, Qtz Feldspar gneiss with felsic anatextic segregations; lacks garnets of first unit in hole. 87.0 - biotite rich zone 6" wide with 10% py. 92 - rock gets coarser and loses foliation bt .5 cm flake in random orientation, slight green tint to microcline.		101 102 103 104 105	86.7 90 95 100 105	90 95 100 105 107	3.3 5 5 5 2							
106	137	Qtz, K-fels (microcline) biotite anatextic pegmatoid; coarse grained. 114 - 128 increase in sulfides py/po to 20 - 30%. 128 - 137 sulfides decrease to 1-2%.		106 107 108 109 110	107 110 114 116 118	110 114 116 118 120	3 4 2 2 2							

EXPLORATION CO., OWNER OR OPTIONEE: Platinum Exploration Canada Inc. DRILLING CO: Ultramobile

CLAIM NO: K 666 297

Footage (m)		Rock Type	Description colour, grain size, texture, minerals, alteration, etc.	Core Specimen (ft/m)	Sample				Assays				
From	To				Sample No.	From (ft)	To (ft)	Length (ft)	Pt (ppb)	Pd (ppb)	Au (ppb)	Cu (ppm)	Ni (ppm)
106	137	Continued		111	120	122	2						
				112	122	124	2						
				113	124	126	2						
				114	126	128	2						
				115	128	132	4						
				116	132	136	4						
				117	136	136	2						
137	144	Sulfide rich biotite gneiss; fine to medium grained, well laminated by po with lesser py average sulfide 10-20%.		118	138	140	2						
				119	140	142	2						
				120	142	144	2						
144	145	Same as 108 - 137.		121	144	145	1						
145	150	Similar to 137 - 144 but coarser grained.		122	145	147	2						
				123	147	150	3						
150	158.5	Pegmatite very coarse grained, qtz microcline biotite.		124	150	155	5						
				125	155	159	4						
158.5	162	Medium grained qtz feldspar biotite rock non-foliated.		126	159	161	2						
162	BOH												

And W. Suttis

DIAMOND DRILL LOG

Drill Hole Survey Data

PROPERTY NAME: Rex Lake
 HOLE NO: RX-87-4
 TOTAL FOOTAGE: 134 Feet
 LOCATION/TOWNSHIP:
 GRID 'A' COLLAR CO-ORDINATES: East Grid
 COLLAR ELEVATION: 1 + 00E; 11.5 m south

metres dip azimuth
 0 -50° 220°

E.G. CORE

DATE STARTED: October 19, 1987
 DATE COMPLETED: October 20, 1987
 DATE LOGGED: October 21, 1987
 LOGGED BY: Fred Gittings
 SUBMITTED BY:

EXPLORATION CO., OWNER OR OPTIONEE: Platinum Exploration Canada Inc. DRILLING CO: Ultramobile CLAIM NO: K 912427

Footage (m)	Rock Type	Description colour, grain size, texture, minerals, alteration, etc.	Core Specimen (ft/m)	Sample			Assays					
				Sample No.	From (ft)	To (ft)	Length (ft)	Pt (ppb)	Pd (ppb)	Au (ppb)	Ni (ppm)	Cu (ppm)
0	17.9	<u>OVERBURDEN</u>										
17.9	37	Qtz feldspar biotite gneiss, grey fine to medium grained finely laminated at 40° TCA. Po laminated parallel to biotite, 2-3%. 23' - mica-like mineral steel grey colour MO lamination became vague with increase of feldspar content at 24'. Feldspar altered green	127 128 129 130 131 132 133	17.9 19 21 24 27 30 34	19 21 24 27 30 34 37	1.1 2 3 3 3 4 3						
37	38	Microcline, qtz, plagioclase segregation medium to coarse grained; medium grained sulfides, po + py and minor cp especially at 37.8'.	134	37	38	1						
38	40	Qtz - hornblende pyrite rock - 20%. Sulfides medium grained equigranular, none foliated.	135	38	40	2						
40	42	Calcite vein with spots of green altered mineral ~ 1-2 mm; sulfides 1-2 mm dissected ~ 1%.	136	40	42	2						

EXPLORATION CO., OWNER OR OPTIONEE: Platinum Exploration Canada Inc.

DRILLING CO: Ultramobile

CLAIM NO: K 912 427

Footage (m)		Rock Type	Description colour, grain size, texture, minerals, alteration, etc.	Core Specimen (ft/m)	Sample			Assays					
From	To				Sample No.	From (ft)	To (ft)	Length (ft)	Pt (ppb)	Pd (ppb)	Au (ppb)	Cu (ppm)	Ni (ppm)
42	43.2		Graphite-pyrite bearing medium to coarse grained gneiss, graphite flakes up to 40% pyrite up to 10%.	137	42	43.2	1.2						
43.2	49		?? microcline, qtz, feldspar biotite coarse grained segregation; mica graphite at top. py, po, cp and moiy shot through zone up to 25% averages 15%.	138	43.2	45	1.8						
				139	45	47	2						
				140	47	49	2						
49	50		Qtz - feldspar - pyrite zone; similar to above but lack microcline and has 50-60% pyrite.	141	49	50	1						
50	52		Similar to 43.2 - 49.	142	50	52	2						
52	54.5		Qtz - sulfide zone; net textured sulfides around qtz grains - up to 70% sulfides po/py.	143	52	53	1						
				144	53	54.5	1.5						
54.5	63.2		Biotite - graphite pyrite schist - finely layered, well foliated at 60° TCA. 56.8 increase in qtz content, decrease in graphite, minor cp in pyrite. 58.5 - 59.5 - qtz microcline segregation. 60 - 63 - po increases to 70% - poorly formed purple garnet noted at 62.5	145	54.5	56	1.5						
				146	56	58	2						
				147	58	60	2						
				148	60	61	1						
				149	61	63.2	2.2						
63.2	76.5		Qtz - microcline, plagioclase segregation sulfide content variable. 63.2 - 65.5 ~ 5%. 65.5 - 66 - graphite schist same as 54.5 66 - 68 ~ 5%. 68 - 73 microcline rich, sulfide core in 4" wide zones at 69.5, 70.5, 71-73, 75, 77.7	150	63.2	65	1.8						
				151	65	67	2						
				152	67	69	2						
				153	69	72	3						
				154	72	73	1						
				155	73	74	1						
				156	74	75	1						
				157	75	77	2						

EXPLORATION CO., OWNER OR OPTIONEE: Platinum Exploration Canada Inc. DRILLING CO: Ultramobile

CLAIM NO: K 912 427

Footage (m) From	Rock Type To	Description colour, grain size, texture, minerals, alteration, etc.	Core Specimen (ft/m)	Sample			Assays					
				Sample No.	From (ft)	To (ft)	Length (ft)	Pt (ppb)	Pd (ppb)	Au (ppb)	Cu (ppm)	Ni (ppm)
76.5	79.5	Qtz - feldspar - pyrite; massive to semi-massive medium to coarse grained pyrite in a qtz - fine grained hornblende rock, massive, non foliated rock. Pyrite euhedral to subhedral when isolated ie. 78'.	158	76	77	1						
			159	77	78	1						
			160	78	79.5	1.5						
79.5	85	Slightly sheared, qtz altered microcline amphibole rock; 1-3% sulfides, fine to medium grained mostly massive.	161	79.5	82	2.5						
			162	82	85	3						
85	91.5	Microcline, qtz, pegmatoid; trace to minor sulfides.	163	85	89	4						
			164	89	91.5	2.5						
91.5	109	Garnet bearing; qtz, feldspar, microcline, hb gneiss; 1-2% fine grained sulfides, trace graphite from 94 - 96.5. Garnets fine grained concentrated in zones; rock has been slightly sheared and silicified. Garnet concentration increased downhole, ie. 102'. Graphite-pyrite schist 106.5 - 107.	165	91.5	94	2.5						
			166	94	97	3						
			167	97	100	3						
			168	100	103	3						
			169	103	109	6						
109		Qtz microcline pegmatoid with zones of qtz, feldspar-pyrite gneiss, ie. 111-112, 113.5-114.1, 115.5-117, 123.8-134.	170	109	113	4						
			171	113	117	4						
			172	117	120	3						
			173	120	124	4						
			174	124	128	4						
			175	128	132	4						
176	132	134	2									
134	EOH											

Fred W. Sattler



Ministry of
Natural
Resources

Report
of Work

Assess 1:1
REX LAKE G
W8701 00226

Instructions - Supply required data on a separate form for each

#226-87



52L07NE0005 24 REX LAKE

900

Name and Address of Recorded Holder:
Platinum Exploration Canada Inc.

Suite 2304, Sun Life Tower, Box 30, 150 King St. W., Toronto, Ontario M5H 1J9

Summary of Work Performance and Distribution of Credits

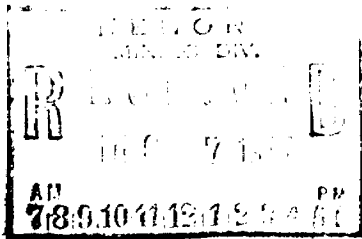
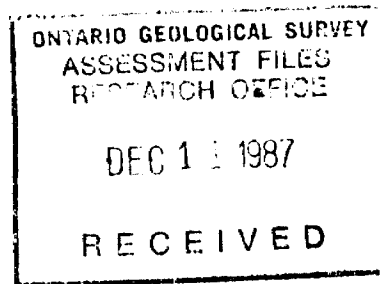
Total Work Days Cr. claimed 600	Mining Claim			Mining Claim			Mining Claim		
	Prefix	Number	Work Days Cr.	Prefix	Number	Work Days Cr.	Prefix	Number	Work Days Cr.
for Performance of the following work. (Check one only) <input type="checkbox"/> Manual Work <input type="checkbox"/> Shaft Sinking Drifting or other Lateral Work. <input type="checkbox"/> Compressed Air, other Power driven or mechanical equip. <input type="checkbox"/> Power Stripping <input checked="" type="checkbox"/> Diamond or other Core drilling <input type="checkbox"/> Land Survey	K	888297	24	K	912423	24	K	912431	24
		888298	24		912424	24		912432	24
		888299	24		912425	24		912433	24
		888300	24		912426	24		912434	24
		912419	24		912427	24		912435	24
		912420	24		912428	24		912436	24
		912421	24		912429	24		912437	24
		912422	24		912430	24		912438	24

All the work was performed on Mining Claim(s): **888300, 888297, 912427** **912439 24**

Required Information eg: type of equipment, Names, Addresses, etc. (See Table Below)

Covering Dates: **October 8, 1987 - October 20, 1987**

Contractor: **Ultramobile Diamond Drilling Ltd.**
12744 24th Avenue
Surrey, British Columbia
V4A 2E6



RX-87-1 160'
RX-87-2 144'
RX-87-3 162'
RX-87-4 134'

600'

Date of Report **December 3/87** Recorded Holder or Agent (Signature) *J.S. Bryant*

Certification Verifying Report of Work

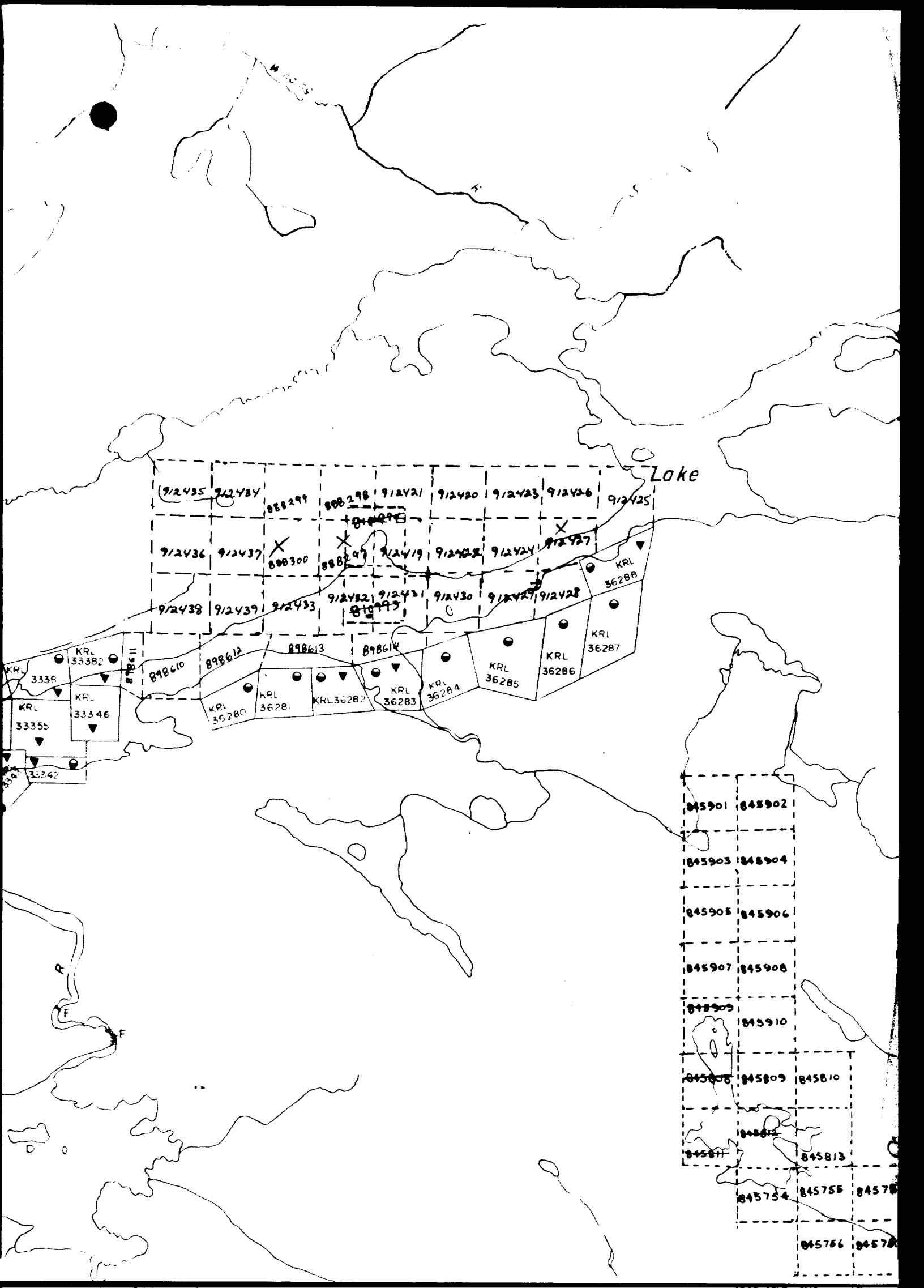
I hereby certify that I have a personal and intimate knowledge of the facts set forth in the Report of Work annexed hereto, having performed the work or witnessed same during and/or after its completion and the annexed report is true.

Name and Postal Address of Person Certifying
Catherine Beckett, Platinum Exploration Canada Inc., Suite 2304, Box 30
Sun Life Tower, 150 King St. W.
Toronto, Ontario M5H 1J9

Date Certified **December 3/87** Certified by (Signature) *J.S. Bryant*

Table of Information/Attachments Required by the Mining Recorder

Type of Work	Specific information per type	Other information (Common to 2 or more types)	Attachments
Manual Work	Nil	Names and addresses of men who performed manual work/operated equipment, together with dates and hours of employment.	Work Sketch: these are required to show the location and extent of work in relation to the nearest claim post.
Shaft Sinking, Drifting or other Lateral Work			
Compressed air, other power driven or mechanical equip.	Type of equipment	888297	
Power Stripping	Type of equipment and amount expended. Note: Proof of actual cost must be submitted within 30 days of recording.		
Diamond or other core drilling	Signed core log showing; footage, diameter of core, number and angles of holes.	Names and addresses of owner or operator together with dates when drilling/stripping done.	Work Sketch (as above) in duplicate
Land Survey	Name and address of Ontario land surveyor.	Nil	Nil



9/2435 9/2434 888299 888298 9/2421 9/2480 9/2423 9/2426 9/2425
 9/2436 9/2437 X 888300 888297 9/2419 9/2422 9/2424 9/2427
 9/2438 9/2439 9/2433 9/2482 9/2431 9/2430 9/2425 9/2428

Lake

KRL 3338
 KRL 33382
 KRL 33355
 33342
 898611
 898610
 898612
 898613
 898614
 KRL 36280
 KRL 3628
 KRL 36282
 KRL 36283
 KRL 36284
 KRL 36285
 KRL 36286
 KRL 36287
 KRL 36288

845901 845902
 845903 845904
 845905 845906
 845907 845908
 845909 845910
 845808 845809 845810
 845811 845813
 845754 845755 845756
 845756 845757

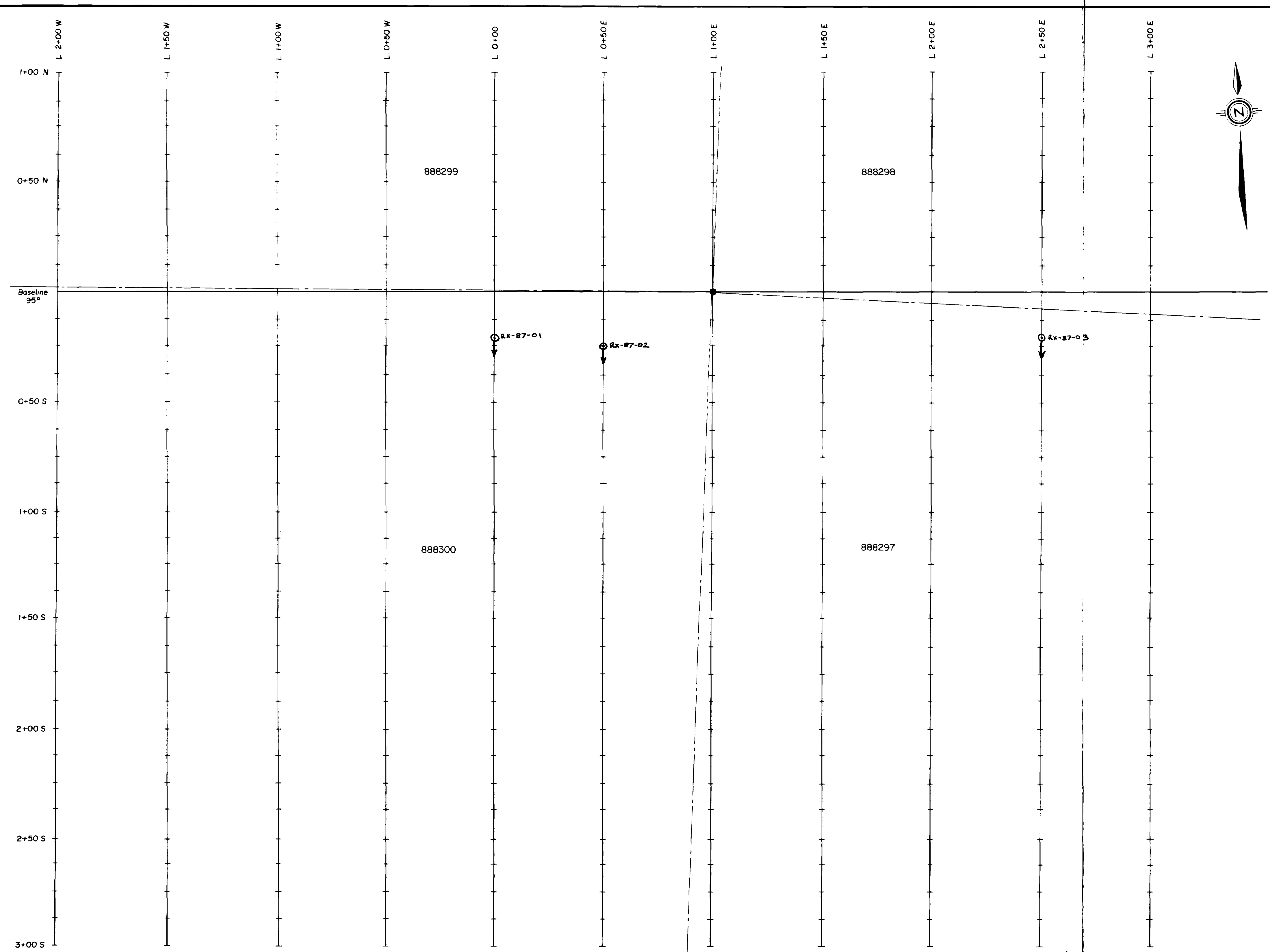


912435	912434	888299	888298	912421	912420	912423	912426	912425
912436	912437	888300	888297	912419	912422	912424	912427	
	912439			912431	912430	912429	912428	
912438		912433						

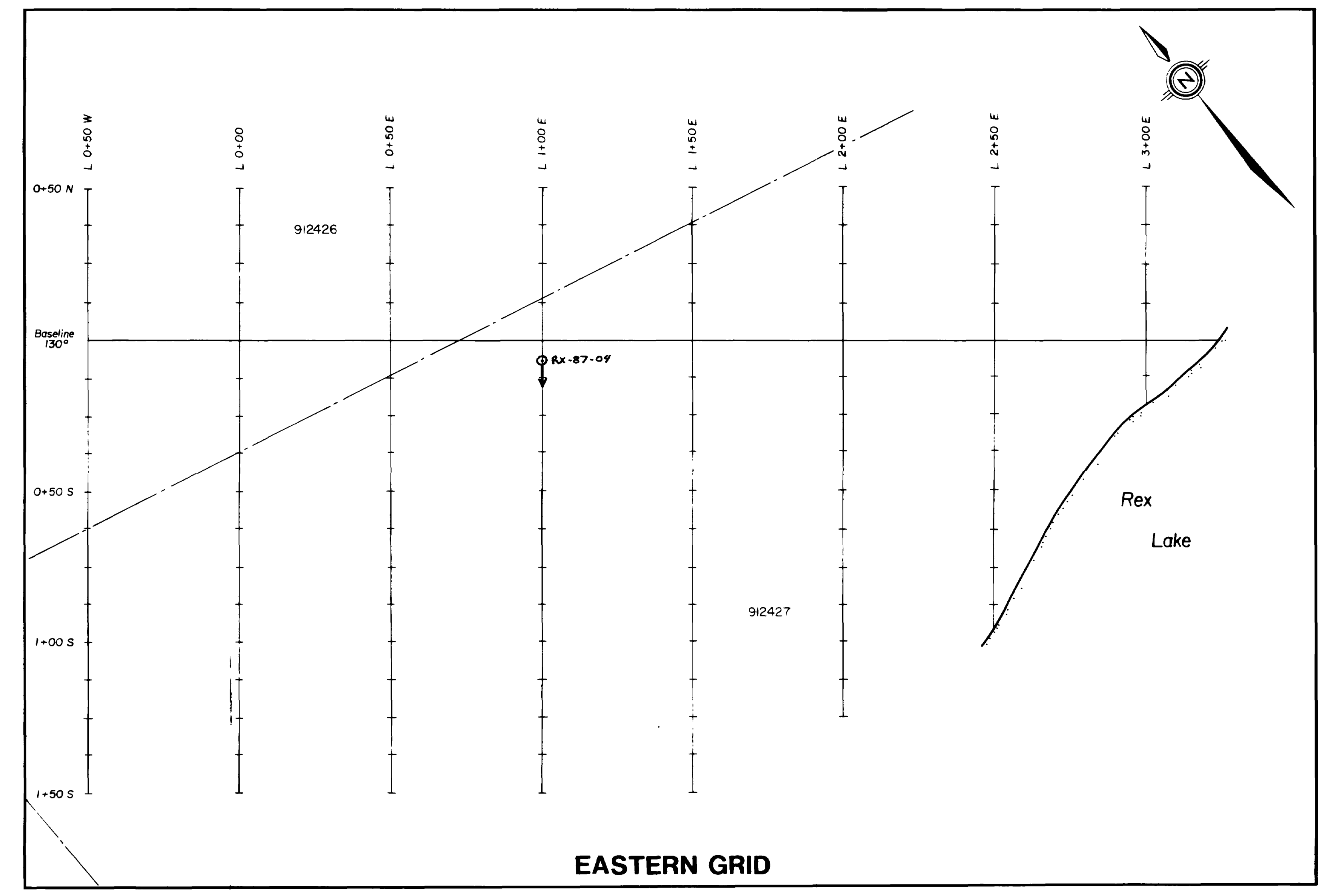


PLATINUM EXPLORATION CANADA INC.		
<p style="text-align: center;">REX LAKE PROPERTY CLAIM LOCATION MAP</p>		
Drawn. A.M.	Aprvd.	Date. Jan. 87
Scale. 1"=1/2ml.	N.T.S. 52L-7	

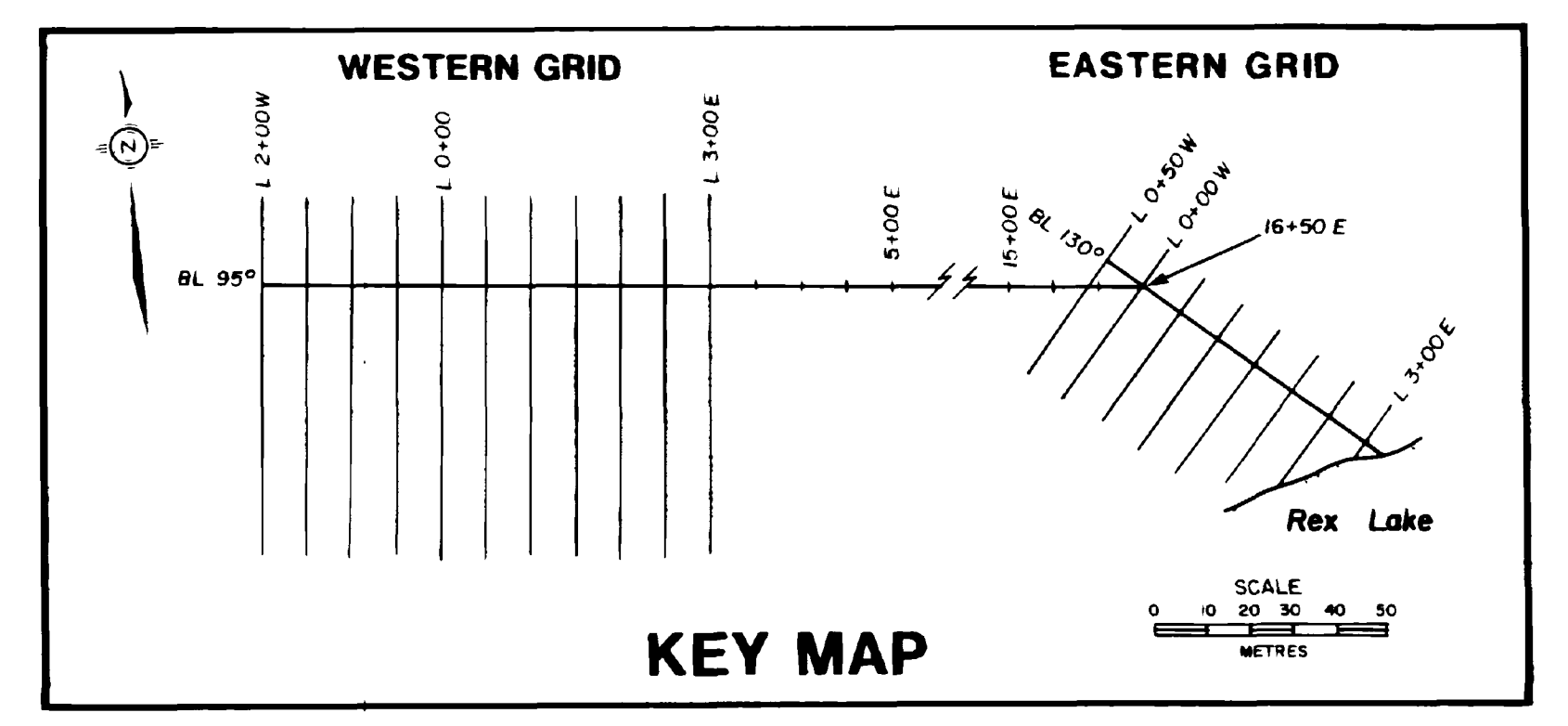
J.P. Smith
FOR F. SMITH



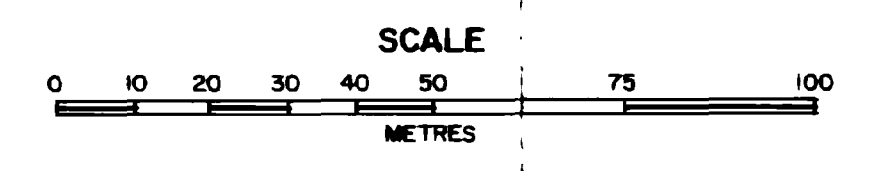
WESTERN GRID



EASTERN GRID



KEY MAP



International Platinum Corporation			
REX LAKE PROPERTY			
District of Kenora Ontario			
GRID AND DIAMOND DRILL HOLE LOCATIONS			
GEOLOGIST: F.G.	APPROVED BY: J.G.B.	DATE: Dec. '87	
DRAFTED BY: D.S.	SCALE: As shown	MAP No: 1	

J. G. B.
J. G. B.

