



52L07NE0008 26 REX LAKE

010

DIAMOND DRILLING

AREA: REX LAKE

REPORT NO: 26

WORK PERFORMED FOR: Kidd Creek Mines Ltd.

RECORDED HOLDER: Same as Above [xx]  
: Other [ ]

<u>Claim No.</u>	<u>Hole No.</u>	<u>Footage</u>	<u>Date</u>	<u>Note</u>
K 912490	FO-1	488.8'	Nov/87	(1)

NOTES: (1) #249-87, filed in June/88

# FALCONBRIDGE NICKEL MINES LIMITED

## DIAMOND DRILL RECORD

LOCATION 12+00W/20+49N DIRECTION Grid S (Az 180°) DIP 45° HOLE No. FO-1  
 LOGGED BY J. A. Lutz CASING BW SHEET No. 1  
 STARTED November 4, 1987 CORE SIZE BQ CORRECTED TESTS 15.7m - 45°  
 FINISHED November 6, 1987 30m - 42°, 60 M - 40° 90M-39° 120m - 36°, 149m-36°  
 PROPERTY FAIRSERVICE OPTION PN 536

FROM	TO	DESCRIPTION
Metres	Metres	
0.0	15.7	<u>SUMMARY LOG</u>
15.7	29.25	<u>CASING</u>
29.25	68.6	<u>GARNET BIOTITE PLAGIOCLASE SCHIST (6s)</u>
68.6	73.0	<u>GRANITE (7a) AND BIOTITE PLAGIOCLASE SCHIST (6r)</u>
73.0	76.5	<u>QUARTZ BIOTITE PLAGIOCLASE GNEISS (6n) AND BIOTITE PLAGIOCLASE SCHIST (6r)</u>
76.5	83.8	<u>GRANITE (7a)</u>
83.8	149.0	<u>BIOTITE PLAGIOCLASE SCHIST (6r)</u>
	149.0	<u>GARNET BIOTITE PLAGIOCLASE SCHIST (6s) AND GRANITE (7a)</u>
		83.8-108.5 trace to 3% pyrite and chalcopryrite
		90.6 - 91.2 Quartz layer, 3-5% pyrite and chalcopryrite
		135.9-136.2 Quartz veins, 3-5% pyrite and chalcopryrite
		<u>END OF HOLE</u>
		Contractor: Midwest Drilling, Winnipeg, Manitoba
		Core at FO-3 drill site

WA Borawiec  
 Dec 23/87

# FALCONBRIDGE NICKEL MINES LIMITED

## DIAMOND DRILL RECORD

LOCATION 12+00W/20+49N DIRECTION Grid S (Az 180°) DIP 45° HOLE No. FO-1  
 LOGGED BY J. A. Lutz CASING BW SHEET No. 2  
 STARTED November 4, 1987 CORE SIZE BQ CORRECTED TESTS 15.7m - 45°  
 FINISHED November 6, 1987 30m-42°, 60m-40°, 90m-39°, 120m-36°, 149m-36°  
 PROPERTY FAIRSERVICE OPTION PN 536

FROM	TO	DESCRIPTION
Metres	Metres	
0.0	15.7	Overburden - casing left in
15.7	29.25	Garnet biotite plagioclase schist, greyish-black, medium grained, 3% fine to coarse grained disseminated garnets, granitic layers throughout pink, medium grained to pegmatitic, 4-150 centimeters
		19.65 - 21.25 Granite, pink coarse grained to pegmatitic, trace pyrite
		25.7 - 27.9 Granite, pink coarse grained, moderate to extensive epidote alteration
29.25	3.6	Granite, pink coarse grained to pegmatite, minor epidote alteration
		29.25 - 30.8 Biotite plagioclase schist bands, light black, medium grained, 5-7 centimeters
33.6	58.9	Biotite plagioclase schist, light black, medium grained, slightly magnetic bands, 1-10 centimeters, Granitic-quartz rich layers and patches throughout 1-20 centimeters
		39.3 - 60.7 slight to moderate epidote alteration
58.9	60.85	Granite, pink, coarse grained to pegmatitic
60.85	65.65	Biotite plagioclase schist, light black, medium grained, slightly magnetic bands 1-5 centimeters, granitic layers throughout, medium grained to pegmatitic, 5-10 centimeters
		65.5 - 65.6 minor epidote alteration
65.65	67.6	Granite, pink coarse grained
67.6	68.6	Biotite plagioclase schist, light black, medium grained
68.6	70.9	Quartz biotite plagioclase gneiss, greyish-pink medium to coarse grained, moderately magnetic bands 1-5 centimeters
		69.2 - 69-8 Granite, pink, coarse grained.
70.9	71.5	Biotite plagioclase schist, light black, medium grained, moderately to strongly magnetic bands 1-5 centimeters

# FALCONBRIDGE NICKEL MINES LIMITED

## DIAMOND DRILL RECORD

LOCATION \_\_\_\_\_ DIRECTION \_\_\_\_\_ DIP \_\_\_\_\_ HOLE No. FO-1  
 LOGGED BY \_\_\_\_\_ CASING \_\_\_\_\_ SHEET No. 3  
 STARTED \_\_\_\_\_ CORE SIZE \_\_\_\_\_ CORRECTED TESTS \_\_\_\_\_  
 FINISHED \_\_\_\_\_  
 PROPERTY \_\_\_\_\_

FROM	TO	DESCRIPTION
Meters	Meters	
71.5	72.5	Quartz biotite plagioclase gneiss, greyish-pink, medium to coarse grained, moderately magnetic bands 1-5 centimeters
72.5	73.0	Biotite plagioclase schist, light black, medium grained, weakly magnetic
73.0	76.5	Granite light pink, medium to coarse grained
		73.2 - 75.0 greenish-pink, moderate epidote alteration, abundant quartz
		74.3 - 75.0 Biotite plagioclase schist bands, light black, medium grained, 1-3 centimeters, moderately magnetic
		74.7 - 74.9 quartz vein
76.5	83.8	Biotite plagioclase schist, light black, fine to medium grained
		76.5 - 77.6 granitic gneiss, pinkish-grey, coarse grained, slightly magnetic
		78.0 - 78.7 granite, light pink, coarse grained, slightly magnetic
		79.0 - 79.5 granite, light pink, coarse grained, slightly magnetic
83.8	106.0	Garnet biotite plagioclase schist, greyish-black, medium grained, 10-5% medium to coarse grained garnets disseminated and bands, slightly to extremely magnetic bands 1-5 centimeters
		trace to 3% disseminated pyrite, chalcopyrite
		87.25 - 87.35 quartz veins, 2-3 centimeters, trace disseminated pyrite
		89.0 - 89.1 quartz layer, 3% disseminated pyrite
		90.6 - 91.2 quartz layer, 3-5% pyrite and chalcopyrite disseminated and blebs
		97.5 quartz patch, trace disseminated pyrite

# FALCONBRIDGE NICKEL MINES LIMITED

## DIAMOND DRILL RECORD

LOCATION \_\_\_\_\_ DIRECTION \_\_\_\_\_ DIP \_\_\_\_\_ HOLE No. FO-1

LOGGED BY \_\_\_\_\_ CASING \_\_\_\_\_ SHEET No. 4

STARTED \_\_\_\_\_ CORE SIZE \_\_\_\_\_ CORRECTED TESTS \_\_\_\_\_

FINISHED \_\_\_\_\_

PROPERTY \_\_\_\_\_

FROM	TO	DESCRIPTION
Metres	Metres	
106.0	108.5	Granite, greyish-pink, coarse grained, trace pyrite blebs 107.95 - 108.05 garnet biotite plagioclase schist, light black, medium grained, moderately magnetic bands 1-5 centimeters
108.5	110.6	Garnet biotite plagioclase schist, greyish-black, medium grained, moderately magnetic bands 1-5 centimeters.
110.6	118.9	Granite, pink, coarse grained, 5% fine to coarse grained disseminated magnetite
118.9	123.2	Granite, pink, coarse grained to pegmatitic, 5% patches of magnetite 2 - 3 centimeters.
123.2	125.65	Garnet biotite plagioclase schist, greyish-black, medium grained, 10% medium to coarse grained disseminated garnets
125.65	127.75	Garnite, pink, coarse grained, 5% medium to coarse grained magnetite
127.75	149.0	Garnet biotite plagioclase schist, greyish-black, medium grained, 10-20% garnets disseminated and bands, moderately to extremely magnetic bands 1-2 centimeters, quartz patches and granitic bands through, 10-15 centimeters 135.9 - 136.2 Quartz veins, 3-5% pyrite and chalcopyrite disseminated and blebs
	149.0	<u>END OF HOLE</u>
		Contractor: Midwest Drilling, Winnipeg, Manitoba Core at FO-3 drill site

# FALCONBRIDGE NICKEL MINES LIMITED

## DIAMOND DRILL RECORD

LOCATION 12+00W/20+49N DIRECTION Grid S (Az 180°) DIP 45° HOLE No. FO-1  
 LOGGED BY J. A. Lutz CASING BW SHEET No. 1  
 STARTED November 4, 1987 CORE SIZE BQ CORRECTED TESTS 15.7m - 45°  
 FINISHED November 6, 1987 30m - 42°, 60 M - 40° 90M-39° 120m - 36°, 149m-36°  
 PROPERTY FAIRSERVICE OPTION PN 536

FROM	TO	DESCRIPTION
Metres	Metres	
0.0	15.7	<u>SUMMARY LOG</u>
15.7	29.25	<u>CASING</u>
29.25	68.6	<u>GARNET BIOTITE PLAGIOCLASE SCHIST (6s)</u>
68.6	73.0	<u>GRANITE (7a) AND BIOTITE PLAGIOCLASE SCHIST (6r)</u>
		<u>QUARTZ BIOTITE PLAGIOCLASE GNEISS (6n) AND BIOTITE PLAGIOCLASE SCHIST (6r)</u>
73.0	76.5	<u>GRANITE (7a)</u>
76.5	83.8	<u>BIOTITE PLAGIOCLASE SCHIST (6r)</u>
83.8	149.0	<u>GARNET BIOTITE PLAGIOCLASE SCHIST (6s) AND GRANITE (7a)</u>
		83.8-108.5 trace to 3% pyrite and chalcopryrite
		90.6 - 91.2 Quartz layer, 3-5% pyrite and chalcopryrite
		135.9-136.2 Quartz veins, 3-5% pyrite and chalcopryrite
	149.0	<u>END OF HOLE</u>
		Contractor: Midwest Drilling, Winnipeg, Manitoba
		Core at FO-3 drill site

*MA Barawec*  
*Dec 23/87*

# FALCONBRIDGE NICKEL MINES LIMITED

## DIAMOND DRILL RECORD

LOCATION 12+00W/20+49N DIRECTION Grid S (Az 180°) DIP 45° HOLE No. FO-1  
 LOGGED BY J. A. Lutz CASING BW SHEET No. 2  
 STARTED November 4, 1987 CORE SIZE BQ CORRECTED TESTS 15.7m - 45°  
 FINISHED November 6, 1987 30m-42°, 60m-40°, 90m-39°, 120m-36°, 149m-36°  
 PROPERTY FAIRSERVICE OPTION PN 536

FROM	TO	DESCRIPTION
Metres	Metres	
0.0	15.7	Overburden - casing left in
15.7	29.25	Garnet biotite plagioclase schist, greyish-black, medium grained, 3% fine to coarse grained disseminated garnets, granitic layers throughout pink, medium grained to pegmatitic, 4-150 centimeters
		19.65 - 21.25 Granite, pink coarse grained to pegmatitic, trace pyrite
		25.7 - 27.9 Granite, pink coarse grained, moderate to extensive epidote alteration
29.25	3.6	Granite, pink coarse grained to pegmatite, minor epidote alteration
		29.25 - 30.8 Biotite plagioclase schist bands, light black, medium grained, 5-7 centimeters
33.6	58.9	Biotite plagioclase schist, light black, medium grained, slightly magnetic bands, 1-10 centimeters, Granitic-quartz rich layers and patches throughout 1-20 centimeters
		39.3 - 60.7 slight to moderate epidote alteration
58.9	60.85	Granite, pink, coarse grained to pegmatitic
60.85	65.65	Biotite plagioclase schist, light black, medium grained, slightly magnetic bands 1-5 centimeters, granitic layers throughout, medium grained to pegmatitic, 5-10 centimeters
		65.5 - 65.6 minor epidote alteration
65.65	67.6	Granite, pink coarse grained
67.6	68.6	Biotite plagioclase schist, light black, medium grained
68.6	70.9	Quartz biotite plagioclase gneiss, greyish-pink medium to coarse grained, moderately magnetic bands 1-5 centimeters
		69.2 - 69-8 Granite, pink, coarse grained.
70.9	71.5	Biotite plagioclase schist, light black, medium grained, moderately to strongly magnetic bands 1-5 centimeters

# FALCONBRIDGE NICKEL MINES LIMITED

## DIAMOND DRILL RECORD

LOCATION \_\_\_\_\_ DIRECTION \_\_\_\_\_ DIP \_\_\_\_\_ HOLE No. FO-1  
 LOGGED BY \_\_\_\_\_ CASING \_\_\_\_\_ SHEET No. 3  
 STARTED \_\_\_\_\_ CORE SIZE \_\_\_\_\_ CORRECTED TESTS \_\_\_\_\_  
 FINISHED \_\_\_\_\_  
 PROPERTY \_\_\_\_\_

FROM	TO	DESCRIPTION
Meters	Meters	
71.5	72.5	Quartz biotite plagioclase gneiss, greyish-pink, medium to coarse grained, moderately magnetic bands 1-5 centimeters
72.5	73.0	Biotite plagioclase schist, light black, medium grained, weakly magnetic
73.0	76.5	Granite light pink, medium to coarse grained
		73.2 - 75.0 greenish-pink, moderate epidote alteration, abundant quartz
		74.3 - 75.0 Biotite plagioclase schist bands, light black, medium grained, 1-3 centimeters, moderately magnetic
		74.7 - 74.9 quartz vein
76.5	83.8	Biotite plagioclase schist, light black, fine to medium grained
		76.5 - 77.6 granitic gneiss, pinkish-grey, coarse grained, slightly magnetic
		78.0 - 78.7 granite, light pink, coarse grained, slightly magnetic
		79.0 - 79.5 granite, light pink, coarse grained, slightly magnetic
83.8	106.0	Garnet biotite plagioclase schist, greyish-black, medium grained, 10-5% medium to coarse grained garnets disseminated and bands, slightly to extremely magnetic bands 1-5 centimeters
		trace to 3% disseminated pyrite, chalcopyrite
		87.25 - 87.35 quartz veins, 2-3 centimeters, trace disseminated pyrite
		89.0 - 89.1 quartz layer, 3% disseminated pyrite
		90.6 - 91.2 quartz layer, 3-5% pyrite and chalcopyrite disseminated and blebs
		97.5 quartz patch, trace disseminated pyrite



# FALCONBRIDGE NICKEL MINES LIMITED

## DIAMOND DRILL RECORD

LOCATION \_\_\_\_\_ DIRECTION \_\_\_\_\_ DIP \_\_\_\_\_ HOLE No. FO-1

LOGGED BY \_\_\_\_\_ CASING \_\_\_\_\_ SHEET No. 4

STARTED \_\_\_\_\_ CORE SIZE \_\_\_\_\_ CORRECTED TESTS \_\_\_\_\_

FINISHED \_\_\_\_\_

PROPERTY \_\_\_\_\_

FROM	TO	DESCRIPTION
Metres	Metres	
106.0	108.5	Granite, greyish-pink, coarse grained, trace pyrite blebs 107.95 - 108.05 garnet biotite plagioclase schist, light black, medium grained, moderately magnetic bands 1-5 centimeters
108.5	110.6	Garnet biotite plagioclase schist, greyish-black, medium grained, moderately magnetic bands 1-5 centimeters.
110.6	118.9	Granite, pink, coarse grained, 5% fine to coarse grained disseminated magnetite
118.9	123.2	Granite, pink, coarse grained to pegmatitic, 5% patches of magnetite 2 - 3 centimeters.
123.2	125.65	Garnet biotite plagioclase schist, greyish-black, medium grained, 10% medium to coarse grained disseminated garnets
125.65	127.75	Garnite, pink, coarse grained, 5% medium to coarse grained magnetite
127.75	149.0	Garnet biotite plagioclase schist, greyish-black, medium grained, 10-20% garnets disseminated and bands, moderately to extremely magnetic bands 1-2 centimeters, quartz patches and granitic bands through, 10-15 centimeters 135.9 - 136.2 Quartz veins, 3-5% pyrite and chalcopyrite disseminated and blebs
	149.0	<u>END OF HOLE</u>
		Contractor: Midwest Drilling, Winnipeg, Manitoba Core at FO-3 drill site



52L07NE0008 26 REX LAKE

Name and Postal Address of Recorded Holder:

(ROBERT FAIRSERVICE) KIDD CREEK MINES LTD | 300 S-3168 T-1848  
(Box 627, KENORA, ONTARIO P9N 3X6) 100-3074 Portage Ave R3K0Y2  
WINNIPEG, MAN

Summary of Work Performance and Distribution of Credits

Total Work Days Cr. claimed: 488.8	Mining Claim			Mining Claim			Mining Claim		
	Prefix	Number	Work Days Cr.	Prefix	Number	Work Days Cr.	Prefix	Number	Work Days Cr.
For Performance of the following work. (Check one only) <input type="checkbox"/> Manual Work <input type="checkbox"/> Shaft Sinking Drifting or other Lateral Work. <input type="checkbox"/> Compressed Air, other Power driven or mechanical equip. <input type="checkbox"/> Power Stripping <input checked="" type="checkbox"/> Diamond or other Core drilling <input type="checkbox"/> Land Survey	K	912440	20	K	912448	20	K	912456	20
		912441	20		912449	20		912457	20
		912442	20		912450	20		912458	20
		912443	20		912451	20		912459	20
		912444	20		912452	20		912460	20
		912445	20		912453	20		912461	20
		912446	20		912454	20		912462	20
		912447	20		912455	20		912463	8.8

All the work was performed on Mining Claim(s): K 912490 ✓ 921741 20

Required Information eg: type of equipment, Names, Addresses, etc. (See Table Below)

FO-1 149 meters = 488.8 feet. (BQ CORE)  
488.8 feet = 488.8 days filed

Approved. *MR.*

CONTRACTOR: MIDWEST DRILLING  
WINNIPEG, MANITOBA

ONTARIO GEOLOGICAL SURVEY  
 ASSESSMENT FILES  
 RESEARCH OFFICE  
 JAN 29 1988  
 RECEIVED  
 MINING DIV.  
 RECEIVED  
 DEC 24 1987  
 AM 7 8 9 10 11 12 1 2 3 4 5 6

Date of Report	Recorded Holder or Agent (Signature)
December 23/87	Mr Boswec

Certification Verifying Report of Work

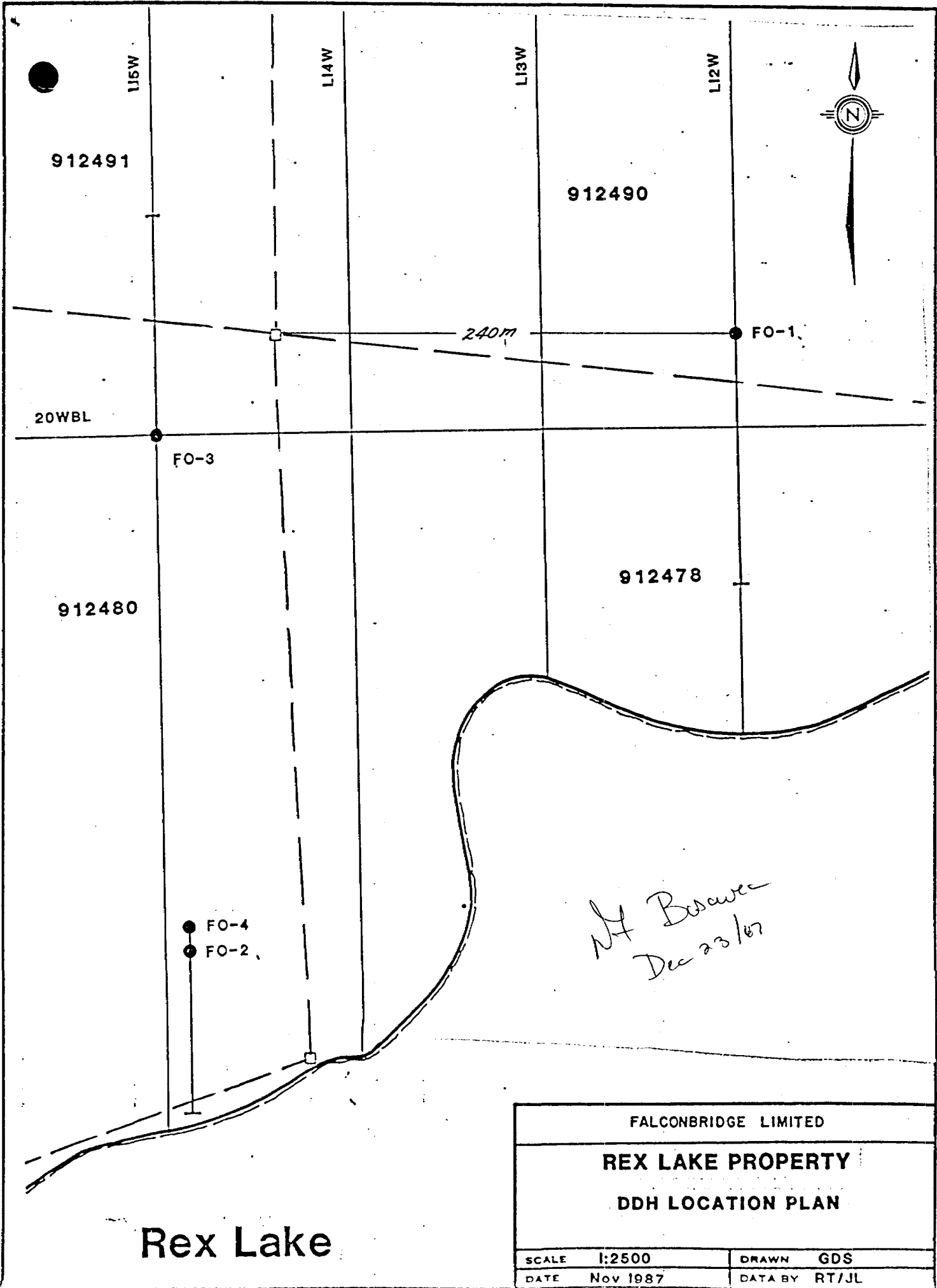
I hereby certify that I have a personal and intimate knowledge of the facts set forth in the Report of Work annexed hereto, having performed the work or witnessed same during and/or after its completion and the annexed report is true.

Name and Postal Address of Person Certifying  
 J.F. BOSWEC 100-3074 PORTAGE AVE  
 WINNIPEG, MANITOBA R3K 0Y2

Date Certified	Certified by (Signature)
December 23/87	Mr Boswec

Table of Information/Attachments Required by the Mining Recorder

Type of Work	Specific information per type	Other information (Common to 2 or more types)	Attachments
Manual Work	Nil	Names and addresses of men who performed manual work/operated equipment, together with dates and hours of employment.	Work Sketch: these are required to show the location and extent of work in relation to the nearest claim post.
Shaft Sinking, Drifting or other Lateral Work			
Compressed air, other power driven or mechanical equip.	Type of equipment	Names and addresses of owner or operator together with dates when drilling/stripping done.	Work Sketch (as above) in duplicate
Power Stripping	Type of equipment and amount expended. Note: Proof of actual cost must be submitted within 30 days of recording		
Diamond or other core drilling	Signed core log showing: footage, diameter of core, number and angles of holes.		
Land Survey	Name and address of Ontario land surveyor.	Nil	Nil



912491

912490

20WBL

FO-3

240M

FO-1

912480

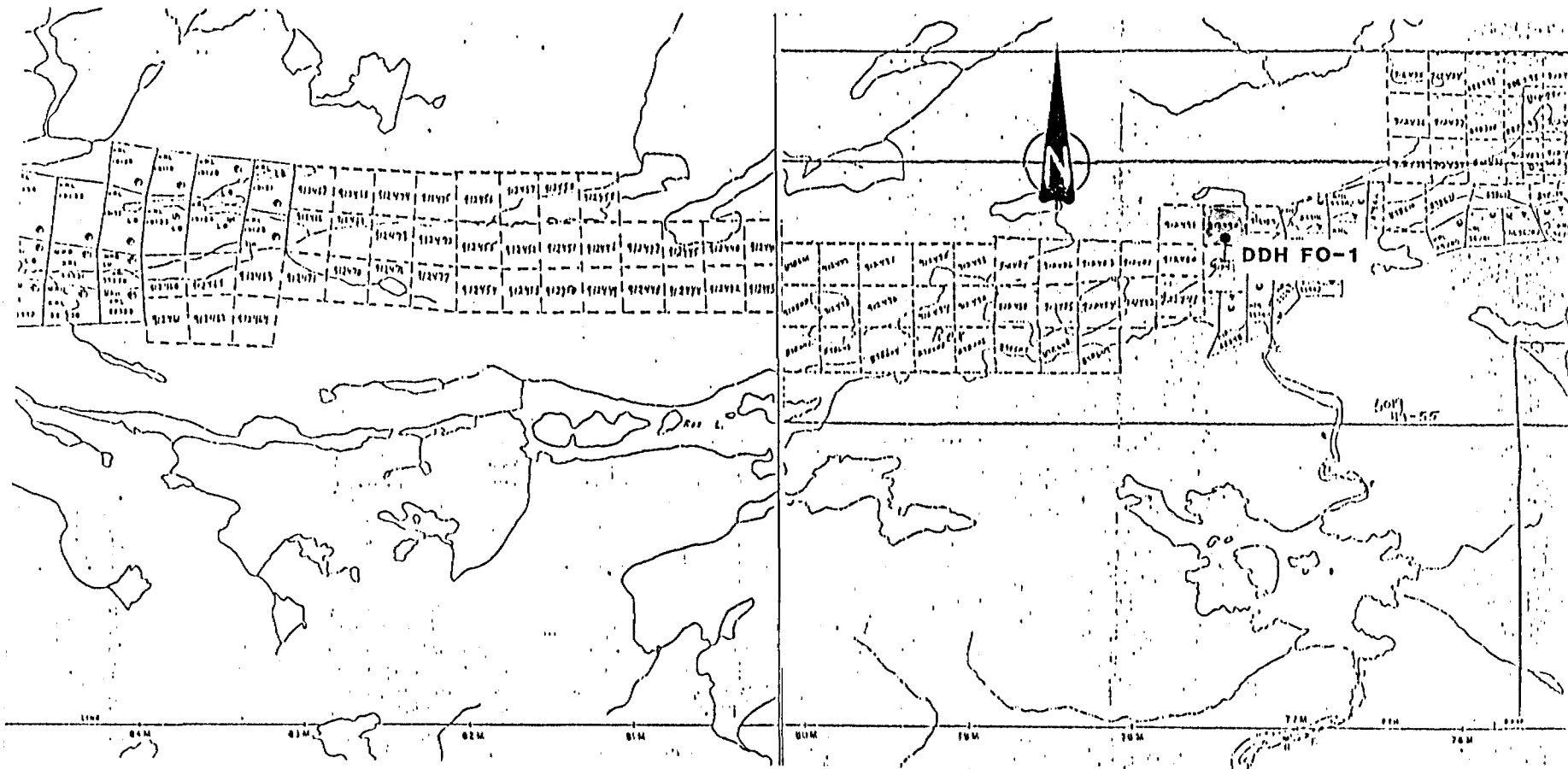
912478

FO-4  
FO-2

*M Basawa  
Dec 23/87*

Rex Lake

FALCONBRIDGE LIMITED	
<b>REX LAKE PROPERTY</b> DDH LOCATION PLAN	
SCALE 1:2500	DRAWN GDS
DATE Nov 1987	DATA BY RT/JL



CLAIM WHICH WORK WAS PERFORMED ON.

CLAIMS WORK WAS DISTRIBUTED TO

*NA Bedawee  
Dec 23/87*

FALCONBRIDGE LIMITED

FAIRSERVICE CLAIMS

SCALE 1 INCH = 1 MILE

DRAWN

DATE DEC/87

DATA

DFB

# WERNER LAKE AREA G-2654

